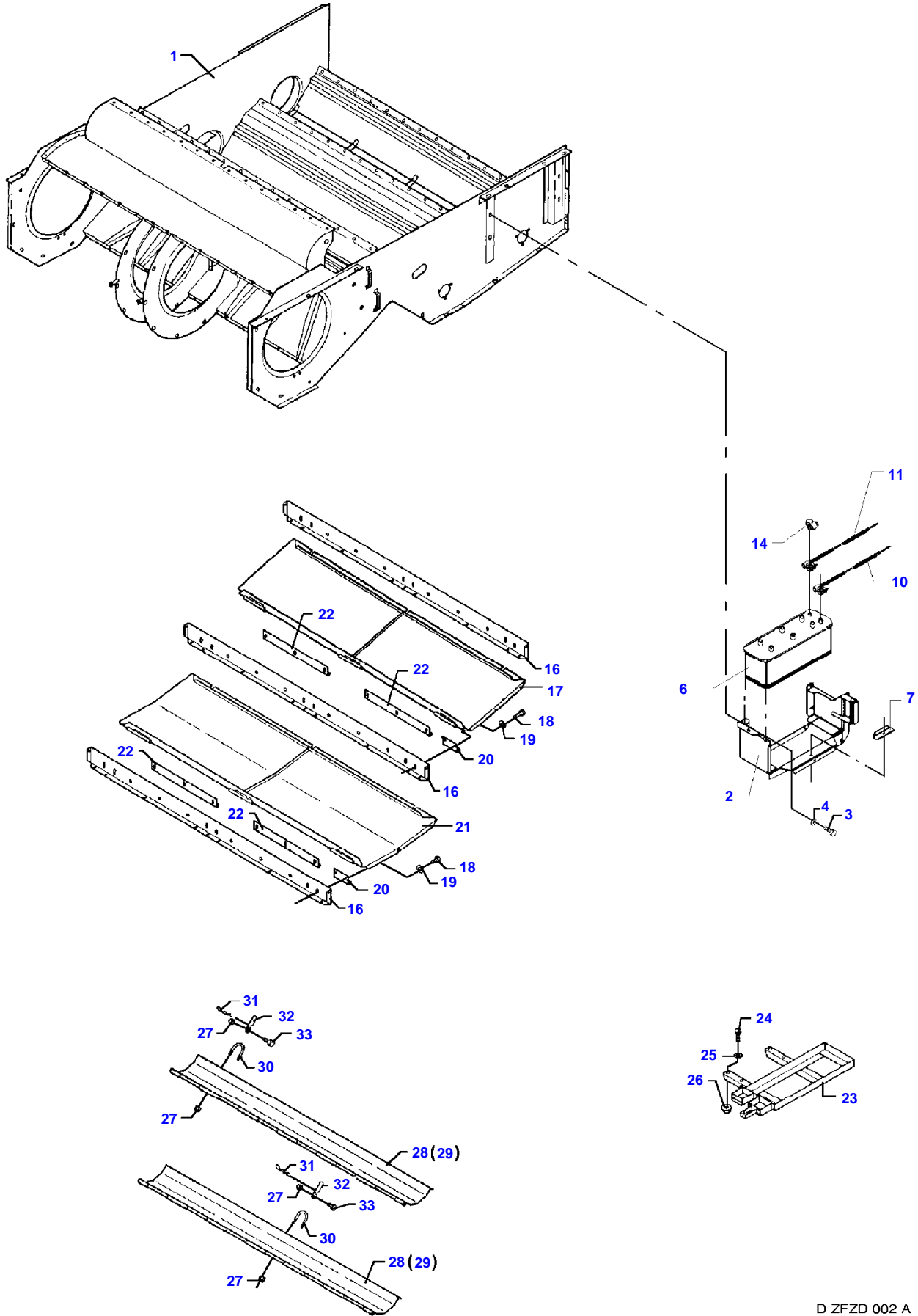


Page Title	Page Number
Knives And Fingers - Freeflow - 14' - 20'	001-0001
Table Auger Right Hand - Freeflow - 14' - 20'	001-0002
Table Auger Left Hand - Freeflow - 14' - 20'	001-0003
Guarding And Transmissions - Freeflow - 14' - 20'	001-0004
Table Housing And Guarding - Freeflow - 14' - 20'	001-0005
Knives And Fingers - Powerflow - 14' - 20'	001-0006
Table Auger Right Hand - Powerflow - 14' - 20'	001-0007
Tabel Auger Left Hand - Powerflow - 14' - 20'	001-0008
Guarding And Transmissions - Powerflow - 14' - 20'	001-0009
Table Housing And Guarding - Powerflow - 14' - 20'	001-0010
Powerflow Band - Left Hand - 14' - 20'	001-0011
Powerflow Band - Right Hand - 14' - 20'	001-0012
Oilseed Rape Auger	001-0013
Straw Dividers	001-0014
Table Trailer - From No 0000500	001-0015
Table Trailer - UP TO NO. 7374033	001-0016
Lightening Bracket - UP TO NO. 7374033	001-0017
Electric Vertical Knife	001-0018
Decals	001-0019

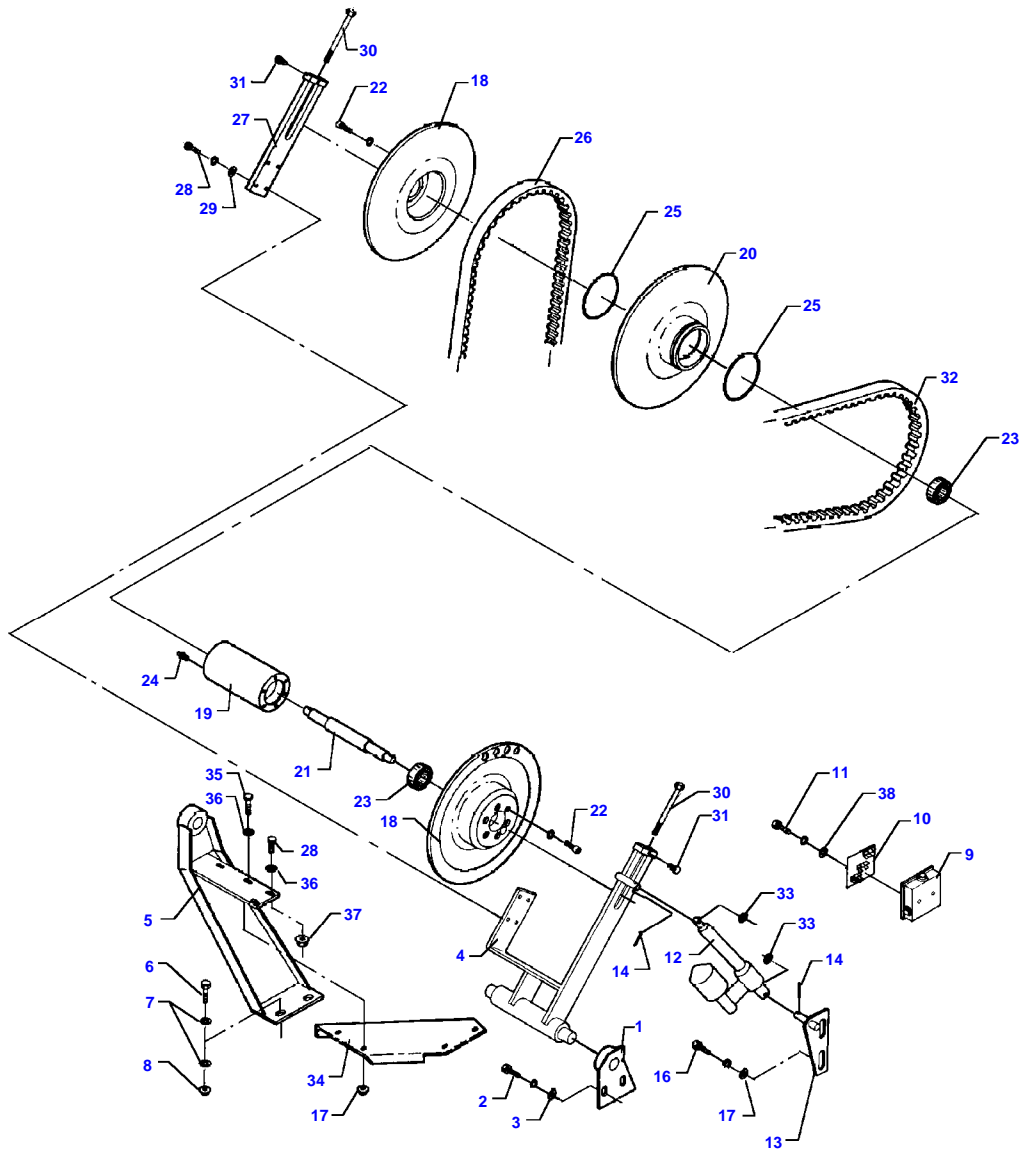
5220 / 5250 COMBINES - 1637410
D-ZFZD-002-A



Fan Housing - Doors And Batteries

Item	Part Number	Qty	Description	Comments
1	D28482185	1	Housing	
2	D28485104	1	Support	
3	D40404900	X	Hex. Sock. Screw	
4	D28480704	X	Washer	
6	D44900588	1	Battery	
7	D28480285	1	Retainer	
10	D28781896	1	Cable	See Page - Reference Number 012-0007/22
11	D28781929	1	Cable	See Page - Reference Number 012-0007/20
14	D45060042	X	Plug	
16	D28482083	3	Profile	
17	D28482074	1	Gate	
18	D40405000	X	Hex. Sock. Screw	
19	D20400506	X	Washer	
20	D28480417	1	Hinge	
21	D28482075	X	Gate	
22	D28480478	X	Chock	
23	D28181516	1	Retainer	
24	D40405000	4	Hex. Sock. Screw	
25	D20400506	4	Washer	
26	D41013500	4	Nut	
27	1441462X1	X	Locknut	Replace and repair. Old not interchangeable with new D41087400
28	D28482021	2	Shutter	
29	D28482079	2	Shutter	
30	D28560165	6	U Bolt	
31	D27100120	6	Hair Pin	
32	D28560162	6	Lever	
33	D40402700	X	Hex. Sock. Screw	

5220 / 5250 COMBINES - 1637410
D-ZFZE-002-B

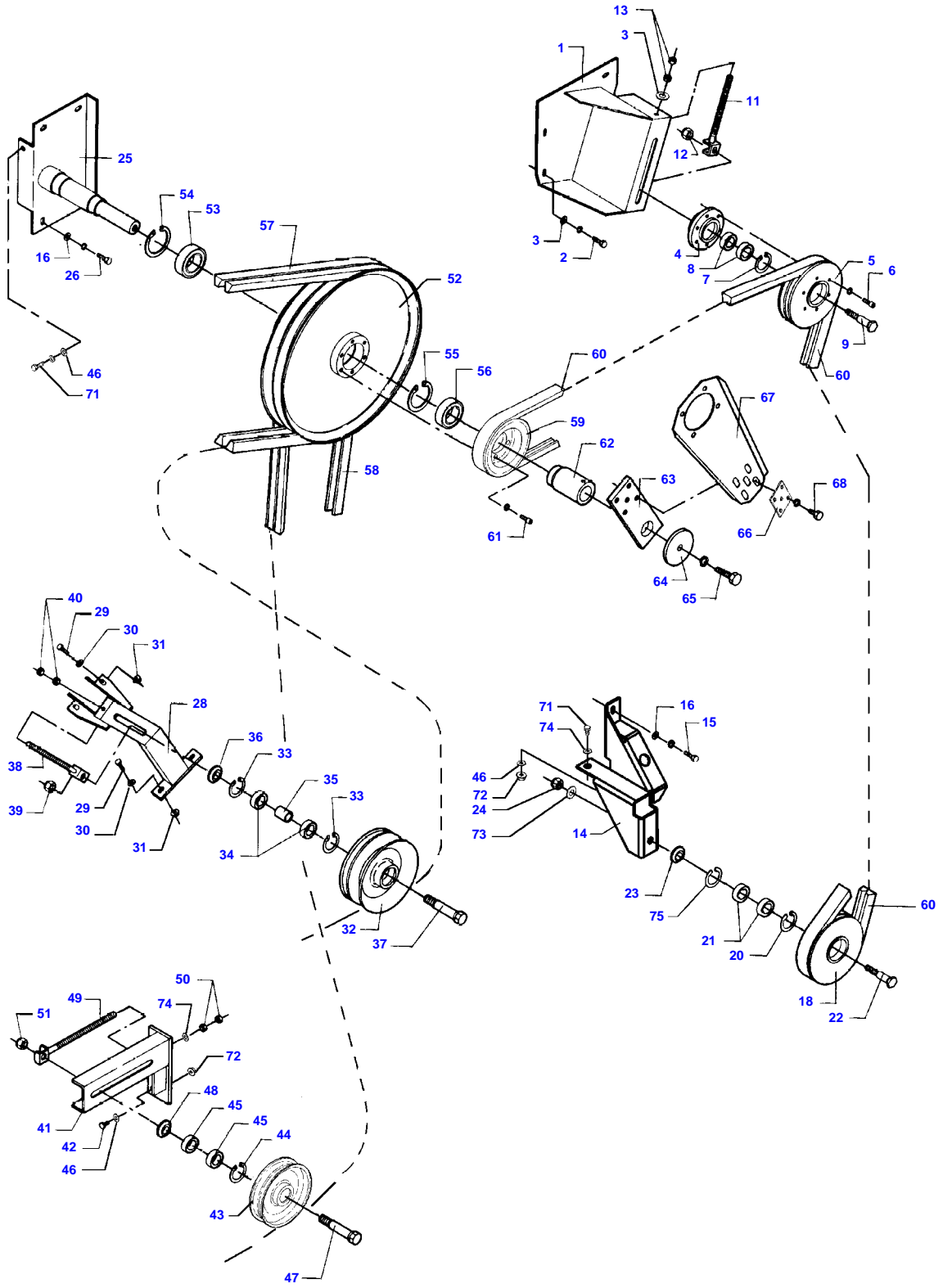


Main Fan Variator

Item	Part Number	Qty	Description	Comments
1	D28480203	1	Bracket	
2	D40407700	2	Hex. Sock. Screw	
3	D20400471	2	Washer	
4	D28480739	1	Fork	
5	D28480869	1	Bracket	
6	D40407900	2	Hex. Sock. Screw	
7	D20400416	4	Washer	
8	D41087600	2	Locknut	
9	D28781903	1	Connector	
10	D28780326	1	Plate	
11	D40402400	2	Hex. Sock. Screw	
12	D45080018	1	Ram	
13	D28485350	1	Bracket	
14	D40445900	2	Pin	
15	D28480470	1	Elbow	
16	D40407900	2	Hex. Sock. Screw	
17	D20400416	2	Washer	
18	D28480324	1	Variator	
	D28480140	2	Variator	(18)
19	D28480321	1	Bearing Carrier	(18)
20	D28480144	1	Washer	(18)
21	D28480316	1	Shaft	(18)
22	D40690400	12	Screw	(18)
23	D41628800	2	Bearing Ball	(18)
24	D43001500	1	Greaser	(18)
25	D45476400	2	O Ring	(18)
26	D41981100	1	Belt	
	D41981400	1	V Belt	[A]
27	D28480317	1	Fork	
28	D40405100	6	Hex. Sock. Screw	
29	D20400506	4	Washer	
30	D40409400	2	Screw Metric	
31	D40402200	2	Hex. Sock. Screw	
32	D41981200	1	Belt	See Page - Reference Number 011-0002/90
33	D20400537	2	Spacer	
34	D28480866	1	Bracket	
35	D40405000	6	Hex. Sock. Screw	
36	D20400506	6	Washer	
37	D41013500	6	Nut	
38	D20400453	2	Washer	

FOOTNOTE [A] REDUCED MAIN FAN SPEED

5220 / 5250 COMBINES - 1637410
D-ZFZF-002-A



Counter Drive

Item	Part Number	Qty	Description	Comments
1	D28480387	1	Bracket	
2	D40407800	3	Hex. Sock. Screw	
3	D20400419	4	Washer	
4	D28480357	1	Hub	
5	D28480094	1	Pulley	
6	D40690400	6	Screw	
7	D42513700	1	Circlip	
8	D41622700	2	Bearing Ball	
9	D28250444	1	Bolt	
11	D28260181	1	Bolt	
12	D41087900	1	Locknut	
13	D41010800	2	Nut	
14	D28480796	1	Support	
15	D40407800	2	Hex. Sock. Screw	
16	D20400473	4	Washer	
18	D28480822	1	Pulley	
20	D42513700	1	Circlip	
21	D41622700	2	Bearing Ball	
22	D28250444	1	Bolt	
23	D28880354	1	Spacer	
24	D41087900	1	Locknut	
25	D28480588	1	Bracket	
26	D40407200	4	Hex. Sock. Screw	
28	D28480245	1	Bracket	
29	D40405000	4	Hex. Sock. Screw	
30	D20400414	4	Washer	
31	D41013500	4	Nut	
32	D28384052	1	Pulley	
33	D42513700	2	Circlip	
34	D41622700	2	Bearing Ball	
35	D28384054	1	Spacer	
36	D28380003	1	Ring	
37	D28384053	1	Bolt	
38	D28211025	1	Bolt	
39	D41087900	1	Locknut	
40	D41010800	2	Nut	
41	D28480384	1	Bracket	
42	D40407200	2	Hex. Sock. Screw	
43	D28250441	1	Pulley	
44	D42513700	1	Circlip	
45	D41622700	2	Bearing Ball	
46	D20400416	3	Washer	
47	D28250444	1	Bolt	
48	D28480457	1	Spacer	
49	D28850316	1	Bolt	
50	D41010800	2	Nut	
51	D41087900	1	Locknut	
52	D28480583	1	Washer	
53	D41617800	1	Bearing Ball	
54	D42515400	1	Circlip	
55	D42515100	1	Circlip	
56	D41613500	1	Bearing Ball	
57	D41990001	2	V Belt	
58	D41933700	1	Kit, Belt	See Page - Reference Number 006-0007/37
59	D28480876	1	Pulley	[A]
	D28480094	1	Pulley	
60	D41979000	1	Belt	See Page - Reference Number 005-0001/46
61	D40690400	6	Screw	
62	D28480091	1	Bush	
63	D28380018	1	Bracket	
64	D28750882	1	Washer	
65	D40416500	1	Screw Metric	
66	D28380178	1	Dog	
67	D28380020	1	Yoke	
68	D40411000	5	Hex. Sock. Screw	
71	D40408000	2	Hex. Sock. Screw	

Fendt

5220 / 5250 COMBINES - 1637410

1637410

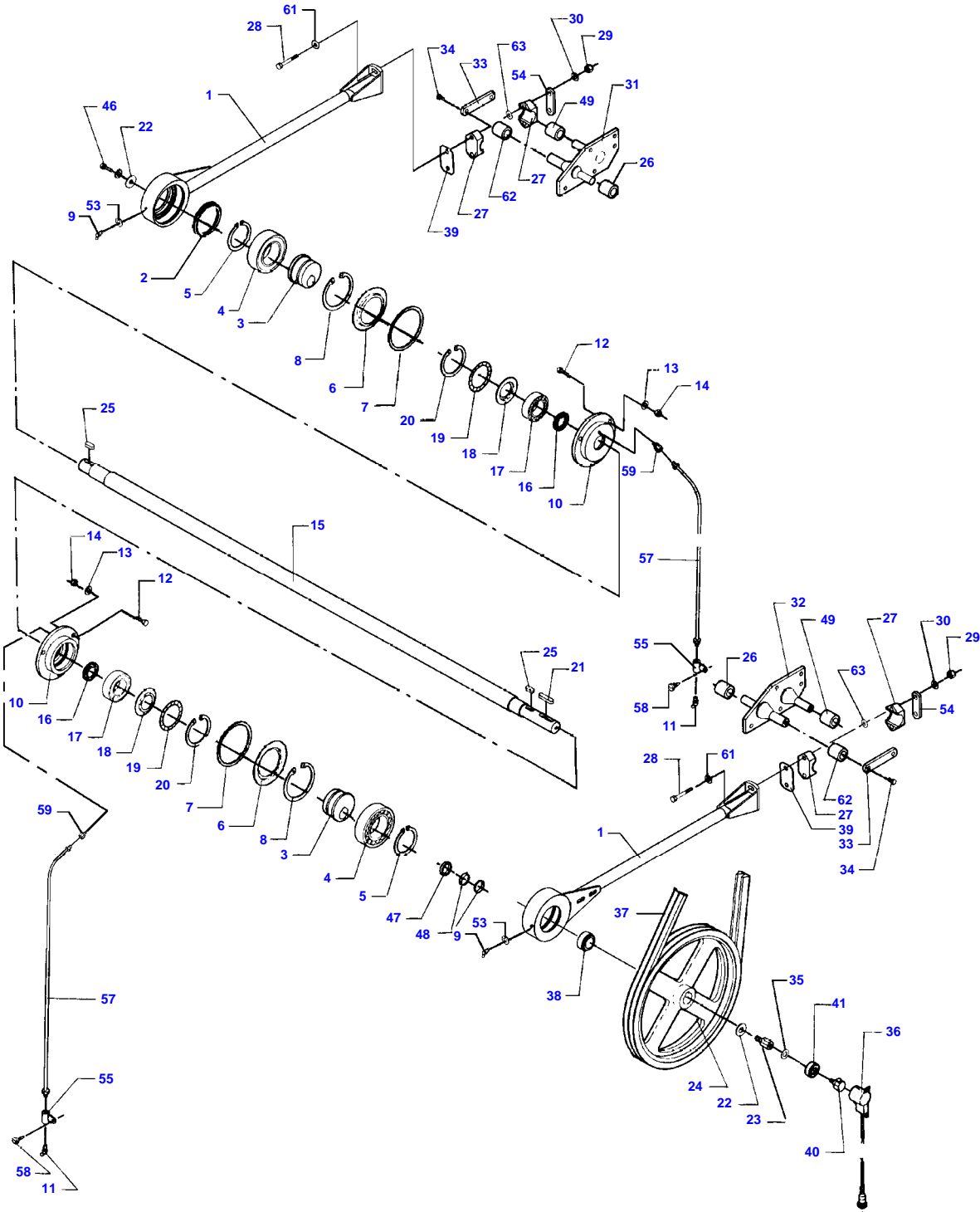
Counter Drive

Page006-0006

Item	Part Number	Qty	Description	Comments
72	D41092500	3	Nut	
73	D20400459	1	Washer	
74	D20400415	2	Washer	
75	D42513700	1	Circlip	

FOOTNOTE [A] REDUCED CHOP SPEED

5220 / 5250 COMBINES - 1637410
D-ZFZG-002-B

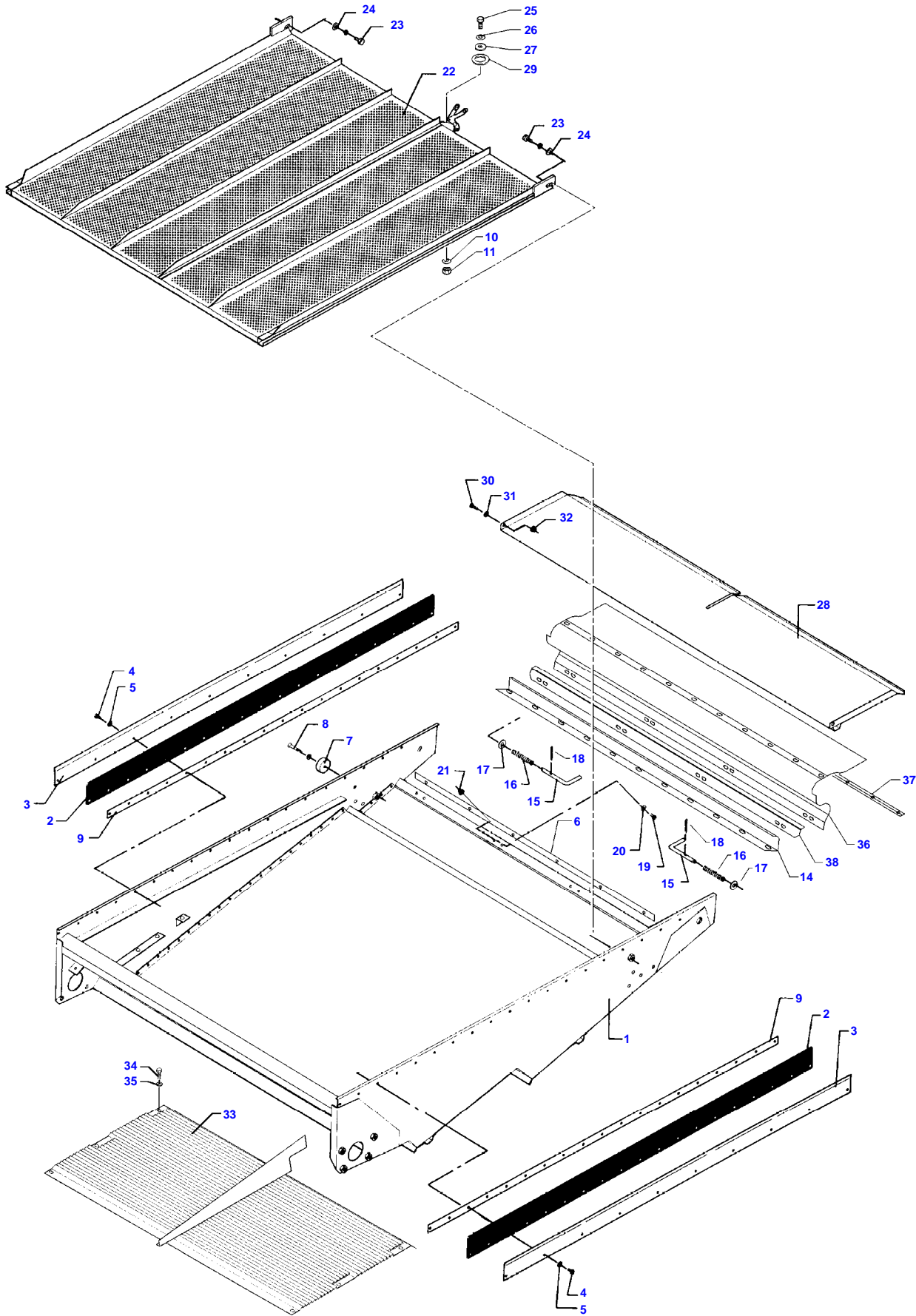


Eccentric Drive

Item	Part Number	Qty	Description	Comments
1	D28480489	2	Connecting Link	
2	D45417000	2	Gasket	
3	D28480265	2	Eccentric	
4	D41616000	2	Bearing Ball	
5	D42505800	2	Circlip	
6	D45426100	2	Seal	
7	D28480267	2	Ring	
8	D42516900	2	Circlip	
9	D43001500	2	Greaser	
10	D28480258	2	Bearing Carrier	
11	D43001500	2	Greaser	
12	D40407800	6	Hex. Sock. Screw	
13	D20400471	6	Washer	
14	D41087600	6	Locknut	
15	D28482006	1	Shaft	
16	D45478900	2	Ring	
17	D41629200	2	Bearing Ball	
18	D45427500	2	Seal	
19	D41679500	2	Spacer	
20	D42515900	2	Circlip	
21	D43105000	1	Key	
22	D25400068	2	Washer	
23	D28780419	1	Threaded Part	
24	D28480460	1	Pulley	
25	D43104600	2	Key	
26	D28480268	2	Bush	
27	D28480526	4	Fitting	
28	D40439600	4	Hex. Sock. Screw	
29	D41092500	4	Nut	
30	D20400419	4	Washer	
31	D28480871	1	Suspension	
32	D28480870	1	Suspension	
33	D28480129	2	Link	
34	D40407700	4	Hex. Sock. Screw	
35	D20400419	1	Washer	
36	D28780514	1	Sensor	
37	D41933700	1	Kit, Belt	See Page - Reference Number 006-0006/58
38	D28480264	1	Bush	
39	D28480430	X	Chock	[A] OPTIONAL
40	D28780516	1	Inductive Taker	
41	D41622600	1	Bearing Ball	
46	D40407700	1	Hex. Sock. Screw	
47	D28480467	1	Ring	
48	D42596500	1	Tightener	
49	D46481400	2	Bush	
53	D20400452	2	Washer	
54	D28480571	2	Dog	
55	D43009200	2	Bracket	
57	D28780831	2	Tube	
58	D40402600	2	Hex. Sock. Screw	
59	D43009500	2	Connector	
61	D41112500	4	Washer	
62	D46481400	2	Bush	
63	D20400507	2	Spacer	

FOOTNOTE [A] QUANTITY AS REQUIRED

5220 / 5250 COMBINES - 1637410
D-ZFZH-002-B

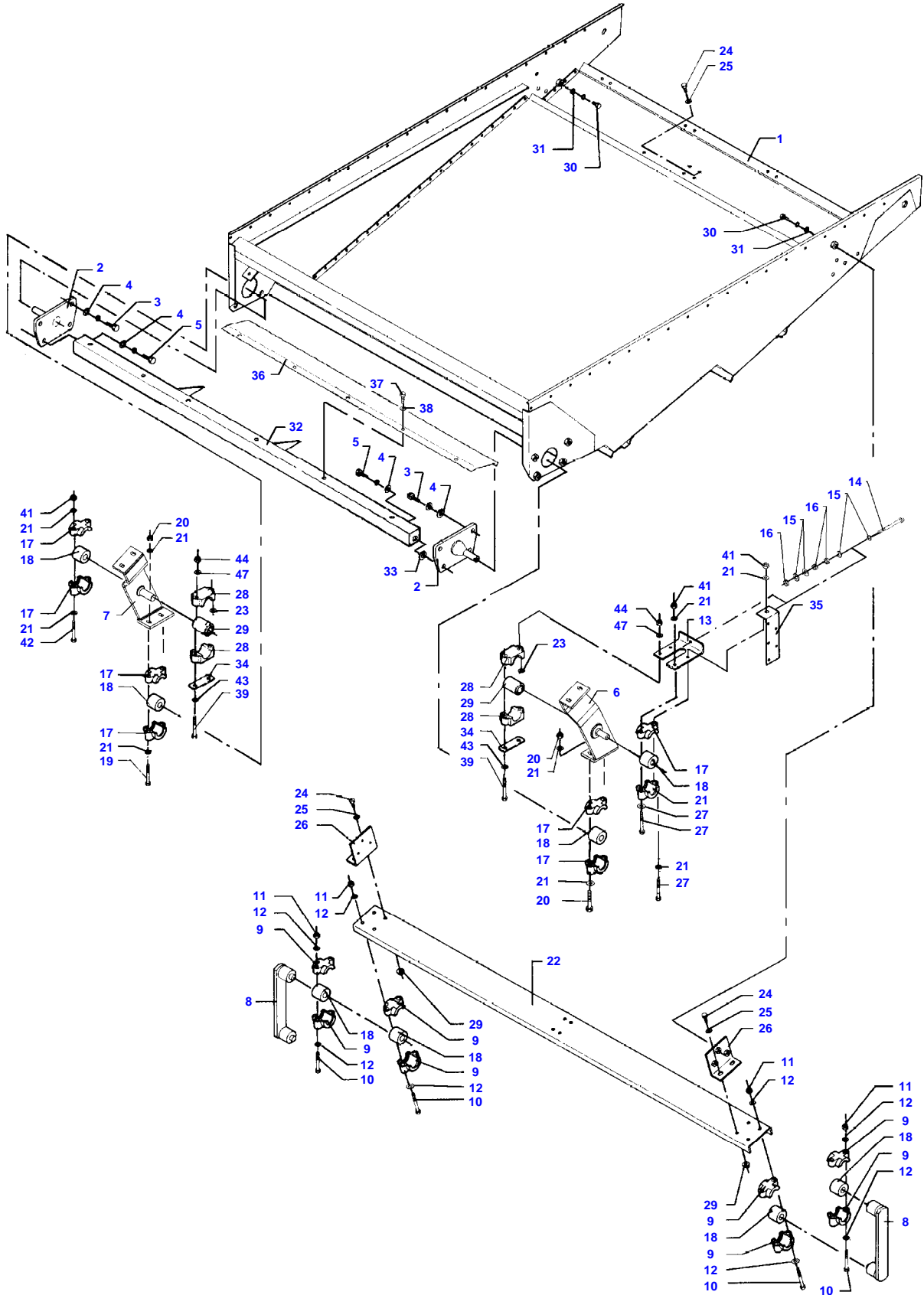


Lower Shaker Shoe And Sieves

Item	Part Number	Qty	Description	Comments
1	D28485256	1	Boot	
	D28482101	1	Shaker Shoe	(1)
2	D28480541	2	Gasket	(1)
3	D28480540	2	Plate	(1)
4	D40402600	X	Hex. Sock. Screw	(1)
5	D20400470	X	Washer	(1)
6	D28482351	1	Rail	
7	D28480097	2	Washer	(1)
8	D40601600	2	Screw Metric	(1)
9	D28480496	2	Shim	(1)
10	D41112600	X	Cup Spring	
11	D41087500	X	Locknut	
14	D28485253	1	Locking	(1)
15	D28485364	2	Lever	(1)
16	D27200158	2	Spring	(1)
17	D20400426	2	Washer	(1)
18	D41405900	2	Pin	(1)
19	D40402400	8	Hex. Sock. Screw	(1)
20	D20400470	8	Washer	(1)
21	D41013400	8	Nut	(1)
22	D28482053	1	Sieve	
	D28482080	1	Sieve	[A]
	D28482081	1	Sieve	[A]
23	D40410800	2	Screw Metric	
24	D20400426	4	Washer	
25	D40063700	X	Screw Metric	
26	D41112900	X	Cup Spring	
27	D28482231	2	Washer	
28	D28482093	1	Plate	[A]
29	D45715900	2	Friction Disc	
30	D40404900	2	Hex. Sock. Screw	[A]
31	D20400500	2	Spacer	[A]
32	D41013500	2	Nut	[A]
33	D28482131	1	Plate	
34	D40404900	6	Hex. Sock. Screw	
35	D20400506	6	Washer	
36	D28485450	1	Seal	
37	D28482030	2	Rail	
38	D28485255	1	Rail	

FOOTNOTE [A] OPTIONAL EQUIPMENT

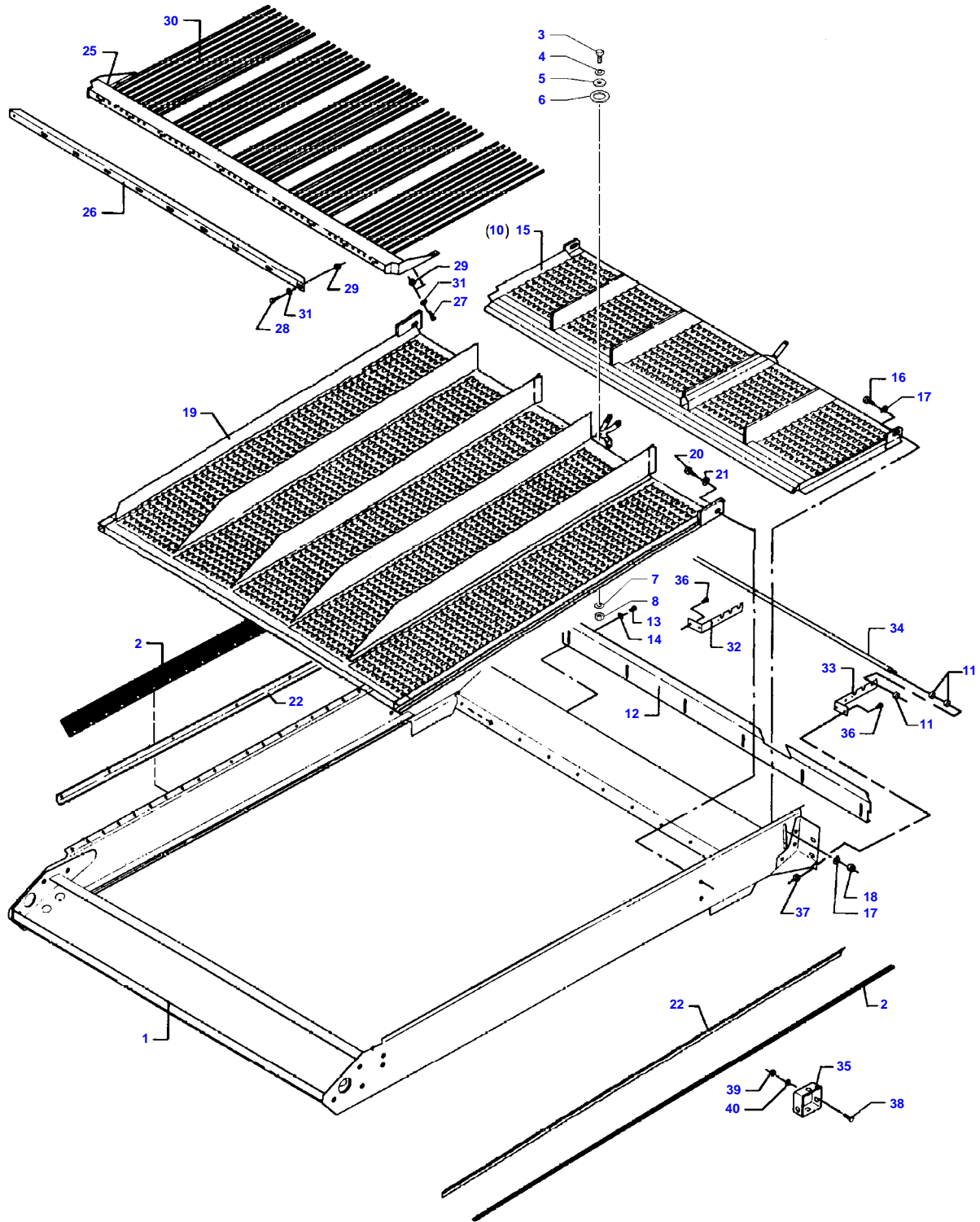
5220 / 5250 COMBINES - 1637410
D-ZFZI-002-B



Lower Shaker Shoe And Suspension

Item	Part Number	Qty	Description	Comments
1	D28482101	1	Shaker Shoe	
2	D28480505	2	Support	CPL
	D28480081	2	Bracket	(2)
3	D40410900	6	Hex. Sock. Screw	
4	D20400537	8	Spacer	
5	D40411100	2	Hex. Sock. Screw	
6	D28480858	1	Arm	Left Hand
	D28480856	1	Arm	Left Hand
7	D28480859	1	Arm	Right Hand
	D28480857	1	Arm	Right Hand
8	D28480069	2	Arm	
9	D28430010	8	Half Flange	
10	D40426500	8	Screw	
11	D41087600	8	Locknut	
12	D20400419	16	Washer	
13	D28480130	1	Plate	
14	D40408800	1	Hex. Sock. Screw	
15	D20400419	4	Washer	
16	D41010800	3	Nut	
17	D28430010	12	Half Flange	
18	D28450420	6	Bush	(8)
	D28450420	6	Bush	(18)
19	D40426600	8	Hex. Sock. Screw	
20	D41087600	12	Locknut	
21	D20400419	X	Washer	
22	D28482059	1	Profile	
23	D28480862	2	Shim	
24	D40407700	8	Hex. Sock. Screw	
25	D20400419	8	Washer	
26	D28480114	1	Angle	
27	D40439600	X	Hex. Sock. Screw	
28	D28480854	4	Bearing Carrier	
29	D46481300	2	Bush	
30	D40407600	6	Hex. Sock. Screw	
31	D20400419	6	Washer	
32	D28482149	1	Stay	
33	D20400513	X	Spacer	OPTIONAL
34	D28480860	2	Clamp	
35	D28780367	1	Retainer	
36	D28482130	1	Plate	
37	D40404900	5	Hex. Sock. Screw	
38	D20400506	5	Washer	
39	D40429400	4	Screw Metric	
41	D41087700	X	Locknut	
42	D40438900	2	Screw	
43	D20400426	8	Washer	
44	D41087700	4	Locknut	

5220 / 5250 COMBINES - 1637410
D-ZFAZ-002-B



D-ZFAZ-002-B

Upper Shaker Shoe And Sieves

Item	Part Number	Qty	Description	Comments
1	D28485257	1	Shaker Shoe	Cpl.
	D28482102	1	Shaker Shoe	(1)
2	D28480546	2	Gasket	(1)
3	D40063700	X	Screw Metric	
4	D41112900	X	Cup Spring	
5	D28482231	1	Washer	
6	D45715900	1	Friction Disc	
7	D41112600	X	Cup Spring	
8	D41087500	X	Locknut	
9	D40404900	14	Hex. Sock. Screw	
10	D28482150	1	Control	[D,F]
11	D41012000	6	Nut Metric	[A]
12	D28482367	1	Plate	Valid from machine/table no,can be used in new as well as in older machines 57346
13	D40402600	7	Hex. Sock. Screw	
14	D20400470	7	Washer	
15	D28482076	1	Sieve	[B,E]
	D28482052	1	Sieve	[C]
16	D40410800	3	Screw Metric	
17	D20400426	6	Washer	
18	D41087700	3	Locknut	
19	D28482054	1	Sieve	
	D28482077	1	Sieve	
	D28482099	1	Sieve	
20	D40410800	2	Screw Metric	
21	D20400426	4	Washer	
22	D28480545	2	Rail	
25	D28482087	1	Extension	[B]
26	D28482086	1	Profile	[B]
27	D40404700	6	Hex. Sock. Screw	[B]
28	D40405000	10	Hex. Sock. Screw	[B]
29	D41013500	16	Nut	[B]
30	D28181540	42	Spring	[B]
31	D20400506	X	Washer	
32	D28780774	1	Support	[A] Right Hand
33	D28780773	1	Support	[A] Right Hand
34	D44900625	1	Sensor	[A]
35	D28781903	1	Connector	
36	D40402600	4	Hex. Sock. Screw	
37	D41010600	4	Nut	
38	D40317500	2	Screw Metric	
39	D41010500	2	Nut	
40	D20400401	2	Washer	

FOOTNOTE [A] OPTIONAL EQUIPMENT GRAIN LOSS INDICATOR

FOOTNOTE [B] OPTIONAL EQUIPMENT, RAKE EXTENSION

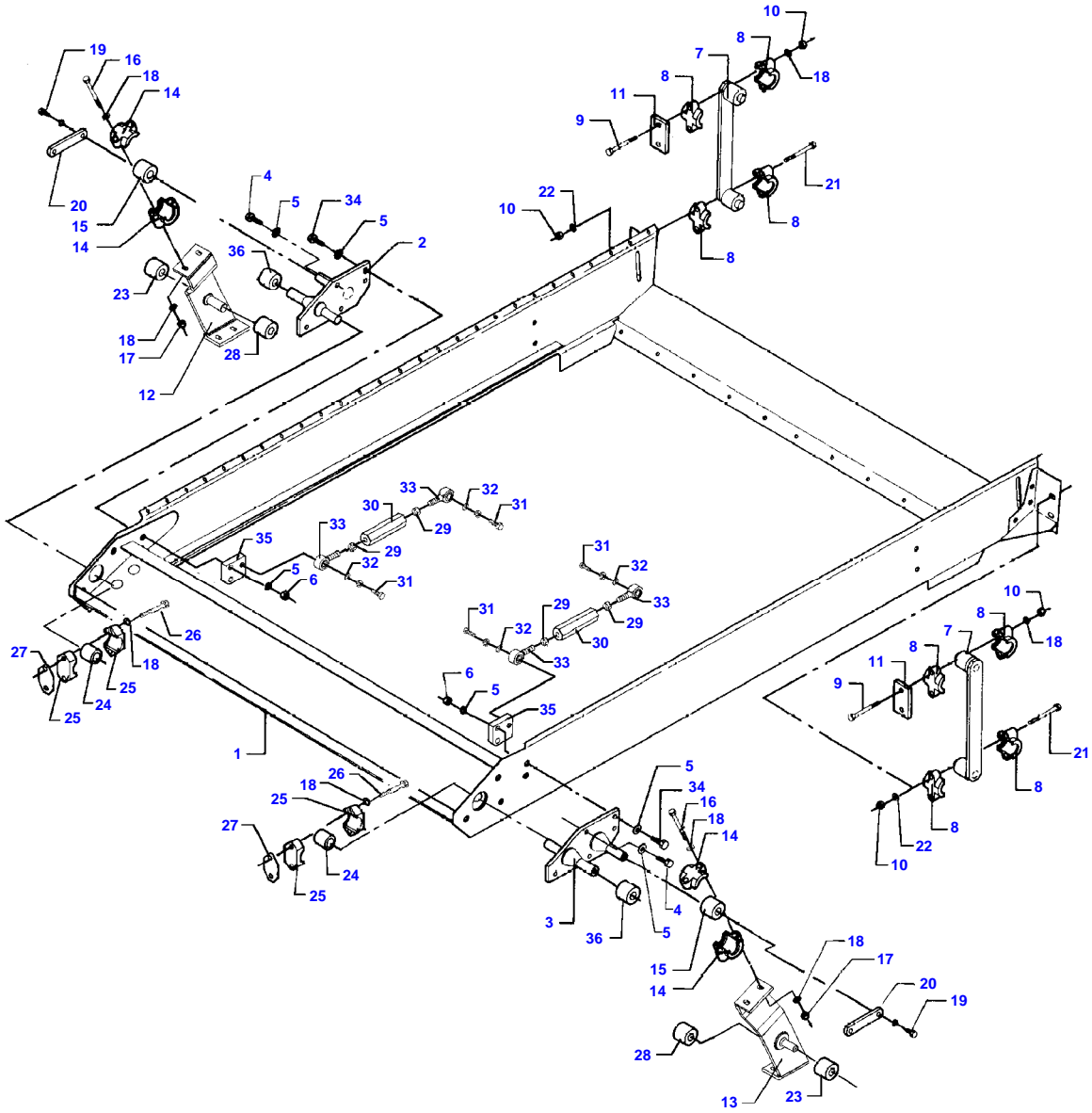
FOOTNOTE [C] STANDARD COMBINE

FOOTNOTE [D] OPTIONAL EQUIPMENT STANDARD COMBINE, STANDARD EQUIPMENT AUTO LEVEL COMBINE,SLOPES

FOOTNOTE [E] CORN

FOOTNOTE [F] SIEVE EXTENSION FOR SLOPES

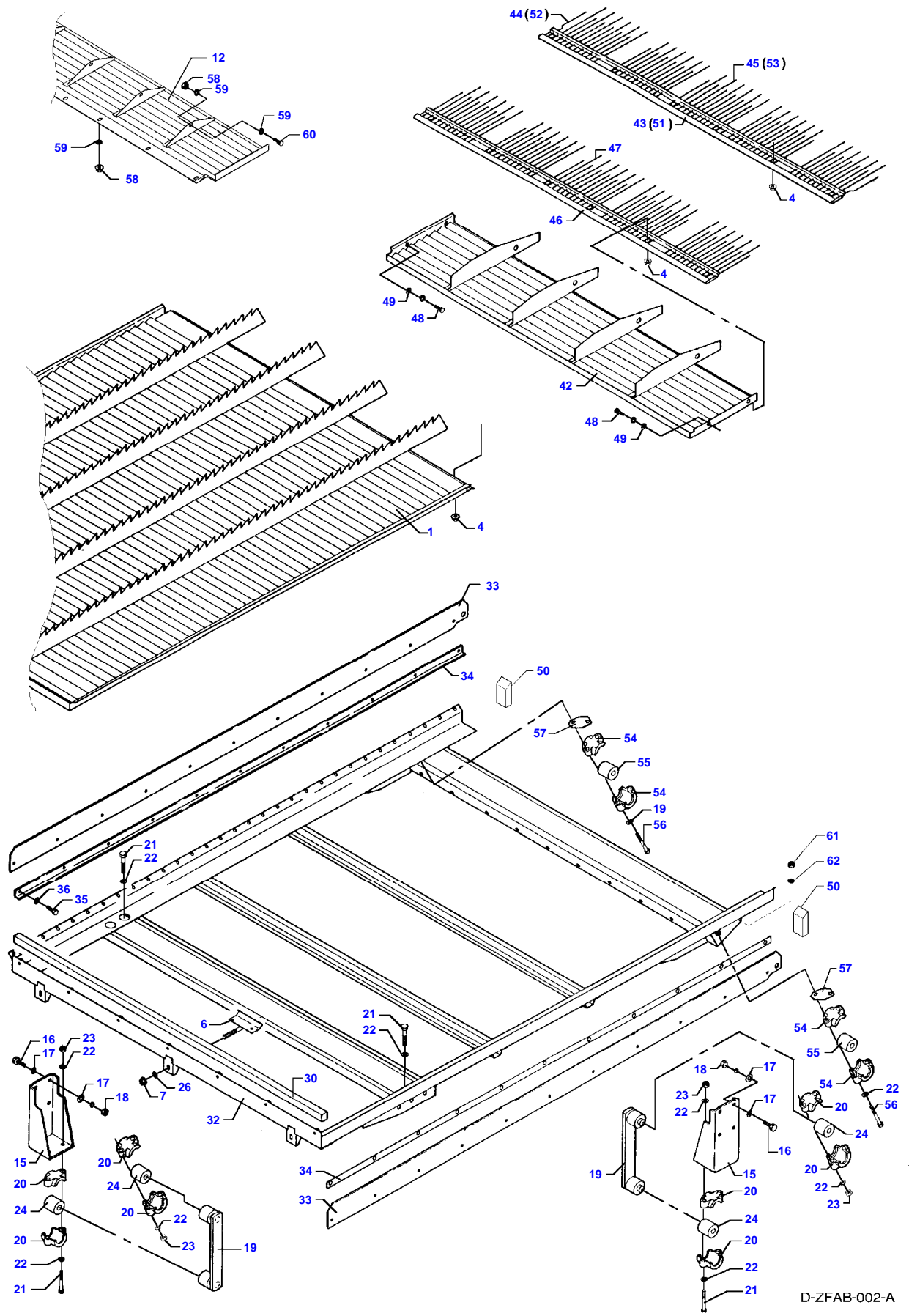
5220 / 5250 COMBINES - 1637410
D-ZFAA-002-A



Upper Shaker Shoe And Suspension

Item	Part Number	Qty	Description	Comments
1	D28485257	1	Shaker Shoe	
	D28482102	1	Shaker Shoe	
2	D28480888	1	Support	Right Hand
3	D28480887	1	Support	Left Hand
4	D40411000	6	Hex. Sock. Screw	
5	D20400537	20	Spacer	
6	D41087700	10	Locknut	
7	D28480087	2	Arm	
8	D28430010	8	Half Flange	
9	D40426800	4	Screw	
10	D41087600	8	Locknut	
11	D28480235	2	Shim	
12	D28480859	1	Arm	Right Hand
	D28480857	1	Arm	Right Hand
13	D28480858	1	Arm	Left Hand
	D28480856	1	Arm	Left Hand
14	D28430010	4	Half Flange	
15	D28450420	2	Bush	
16	D40426600	4	Hex. Sock. Screw	
17	D20400426	6	Washer	
18	D20400419	X	Washer	
19	D40407700	4	Hex. Sock. Screw	
20	D28480129	2	Link	
21	D40426500	4	Screw	
22	D20400416	4	Washer	
23	D28450420	4	Bush	
24	D28480268	4	Bush	
25	D28480270	4	Half Flange	
26	D40426500	4	Screw	
27	D28480105	2	Plate	
28	D28480874	2	Bush	
	D46481300	2	Bush	
29	D41010900	4	Nut	
30	D28480693	2	Screw	
31	D40411000	4	Hex. Sock. Screw	
32	D20400424	4	Washer	
33	D45698800	4	Toggle	
34	D40411400	4	Screw Metric	
35	D28480694	2	Support	
36	D46481400	2	Bush	

5220 / 5250 COMBINES - 1637410
D-ZFAB-002-A



D-ZFAB-002-A

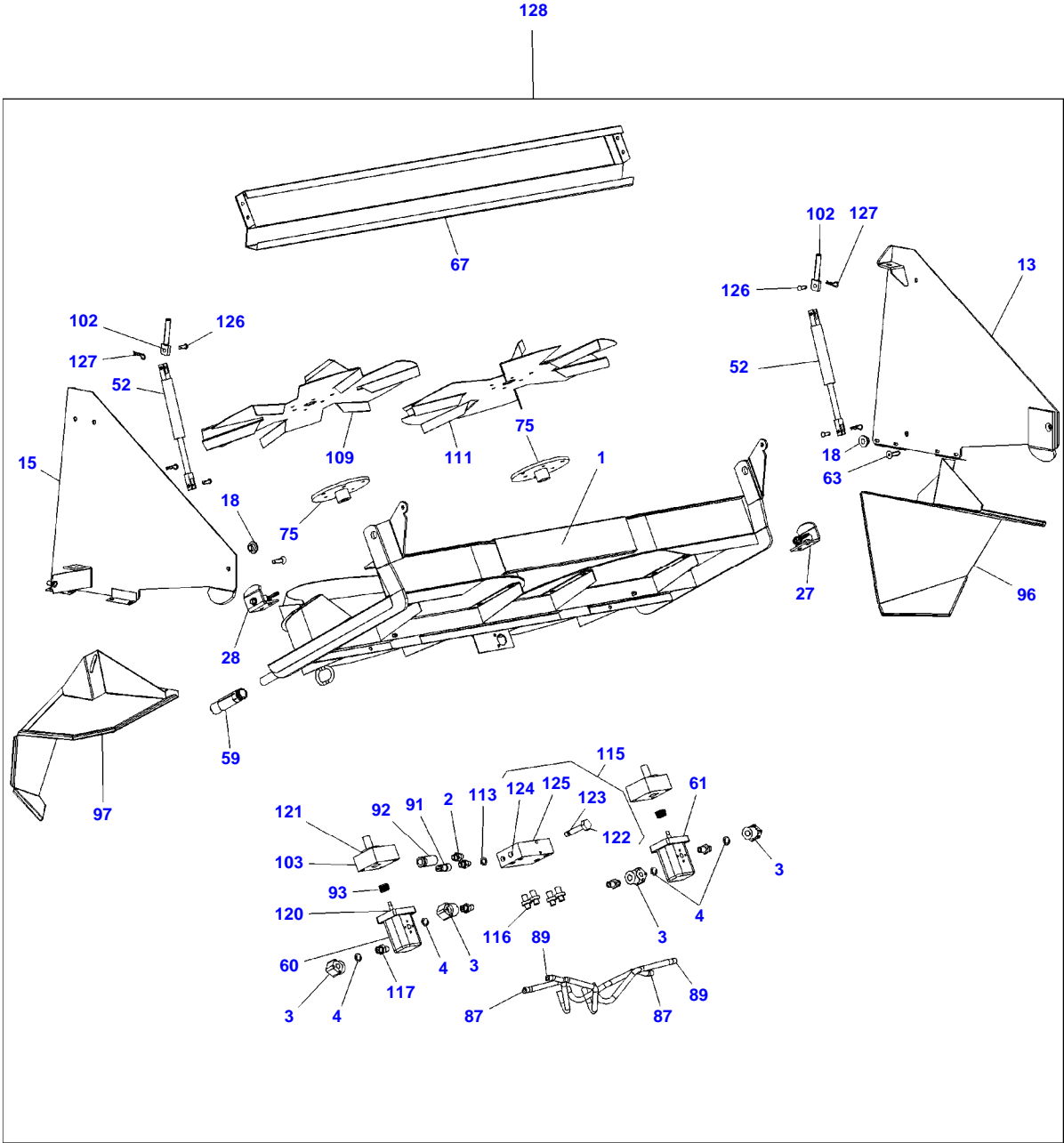
Conveyor Pan And Suspension

Item	Part Number	Qty	Description	Comments
1	D28482298	1	Pan	
4	D41013500	12	Nut	
6	D28480012	3	Hook	
7	D41087600	3	Locknut	
12	D28482198	1	Extension	[B]
15	D28480070	2	Bracket	
16	D40410900	8	Hex. Sock. Screw	
17	D20400426	16	Washer	
18	D41010900	8	Nut	
19	D28480069	2	Arm	
20	D28430010	8	Half Flange	
21	D40426600	4	Hex. Sock. Screw	
22	D41112500	X	Washer	
23	D41087600	X	Locknut	
24	D28450420	4	Bush	(19)
26	D20400419	9	Washer	
30	D44740400	X	Gasket	2 M
32	D28482299	1	Frame	
33	D28480529	2	Gasket	
34	D28480528	2	Rail	
35	D40404900	22	Hex. Sock. Screw	
36	D20400506	22	Washer	
42	D28482126	1	Conveyor	
43	D28482122	1	Grate	
44	D28482119	2	Pin	
45	D28450458	28	Pin	
46	D28482201	1	Grate	
47	D28450458	32	Pin	
48	D40404700	4	Hex. Sock. Screw	
49	D20400506	4	Washer	
50	D28480929	X	Seal	
51	D28084227	1	Extension	[A]
52	D28480735	2	Pin	[A]
53	D28480734	30	Pin	[A]
54	D28480270	4	Half Flange	
55	D28480268	2	Bush	
56	D40426500	2	Screw	Up to Serial or Engine Number 57228
	D40438900	4	Screw	From Serial or Engine Number 57229
57	D28480105	2	Plate	
58	D41013500	10	Nut	[B]
59	D20400411	14	Washer	[B]
60	D40404700	4	Hex. Sock. Screw	[B]
61	D41092500	4	Nut	From Serial or Engine Number 57229
62	D20400473	4	Washer	From Serial or Engine Number 57229

FOOTNOTE [A] MAIZE EQUIPMENT

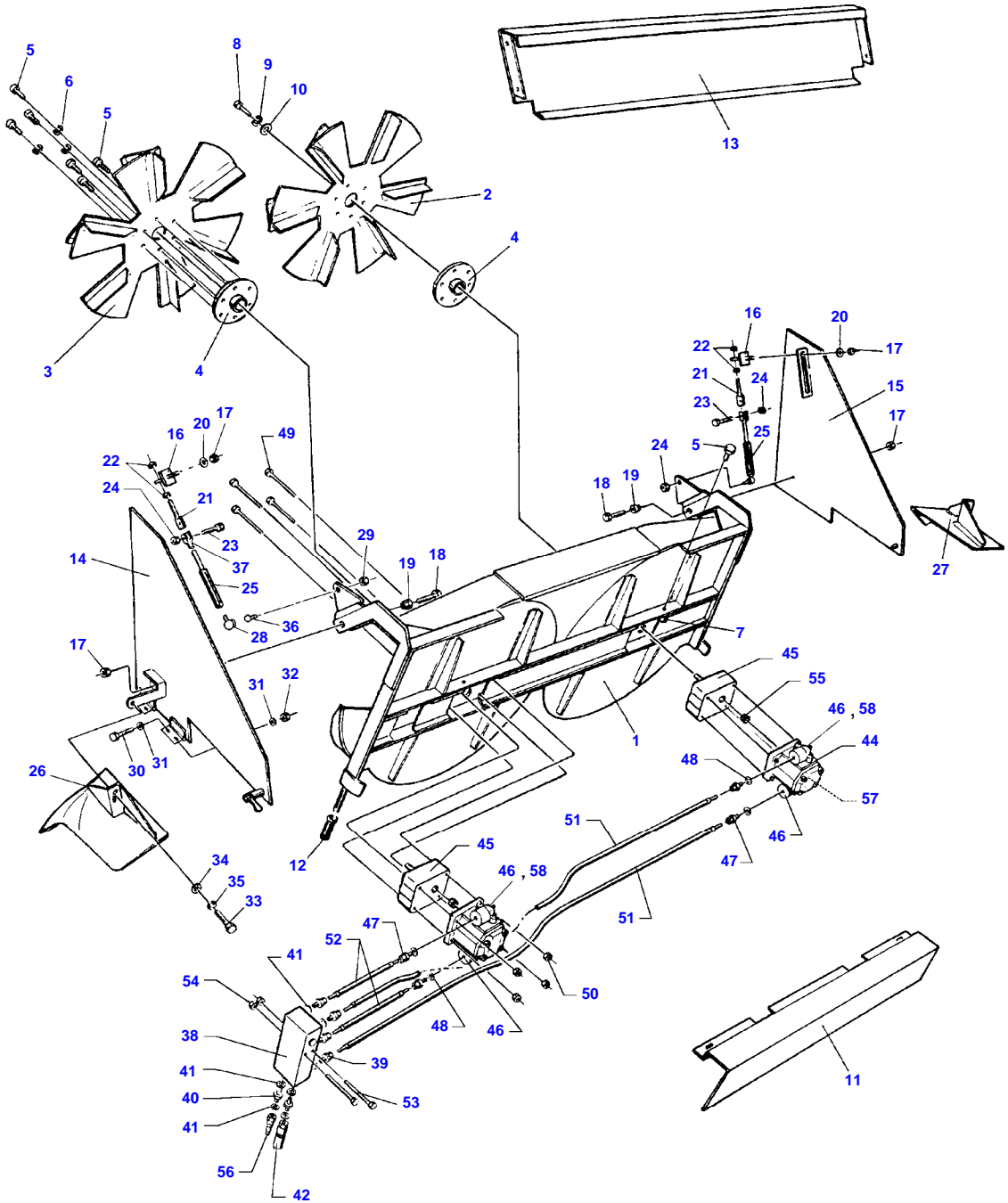
FOOTNOTE [B] OPTIONAL EQUIPMENT

5220 / 5250 COMBINES - 1637410
D-ZFAC-005-C



Item	Part Number	Qty	Description	Comments
1	D49080124	1	Spreader	Length 1400mm
	D49080125	1	Spreader	Length 1680mm
2	D49080119	2	Adaptor	
3	D49070026	4	Flange	
4	D45483200	4	O Ring	
13	D49080120	1	Plate	
15	D49080121	1	Plate	
18	D49080079	2	Spacer	
27	D49080122	1	Angle	
28	D49080123	1	Angle	
52	D49080126	2	Gas Strut	
59	D49060088	1	Lever	
60	D49070059	1	Hydraulic Motor	
61	D49070060	1	Hydraulic Motor	
63	D40603300	2	Screw Metric	
67	D49070047	1	Cover	Length 1400mm
	D49070048	1	Cover	Length 1680mm
75	D49070008	2	Hub	
87	D49080127	2	Pipe	Length 1400mm
	D49080128	2	Pipe	Length 1680mm
89	D49080129	2	Pipe	Length 1400mm
	D49080130	2	Pipe	Length 1680mm
91	D49080131	1	Belt	
92	D49080132	1	Belt	
93	D49070064	2	Nut	
96	D49070054	1	Plate	
97	D49070053	1	Plate	
102	D49080047	2	Tensioner	
103	D49070025	2	Bearing	
109	D49070037	1	Rotor	Length 1400mm
	D49070044	1	Rotor	Length 1680mm
111	D49070038	1	Rotor	Length 1400mm
	D49070043	1	Rotor	Length 1680mm
113	D49070022	2	Seal	
115	D49070056	1	Pressure Valve	
116	D49080133	4	Union	
117	D49080134	4	Union	
120	D49070065	2	Kit, Seal	
121	D49080138	2	Kit, Seal	
122	D49070068	1	Divider	
123	D49070020	1	Kit, Gasket	
124	D49070069	1	Non Return Valve	
125	D49080135	1	Cover	
126	D49080137	4	Screw	
127	D44358000	4	Hair Pin	
128	D49080107	1	Spreader	CPL - 1680MM
	D49080106	1	Spreader	CPL - 1400MM

5220 / 5250 COMBINES - 1637410
D-ZFAC-002-B

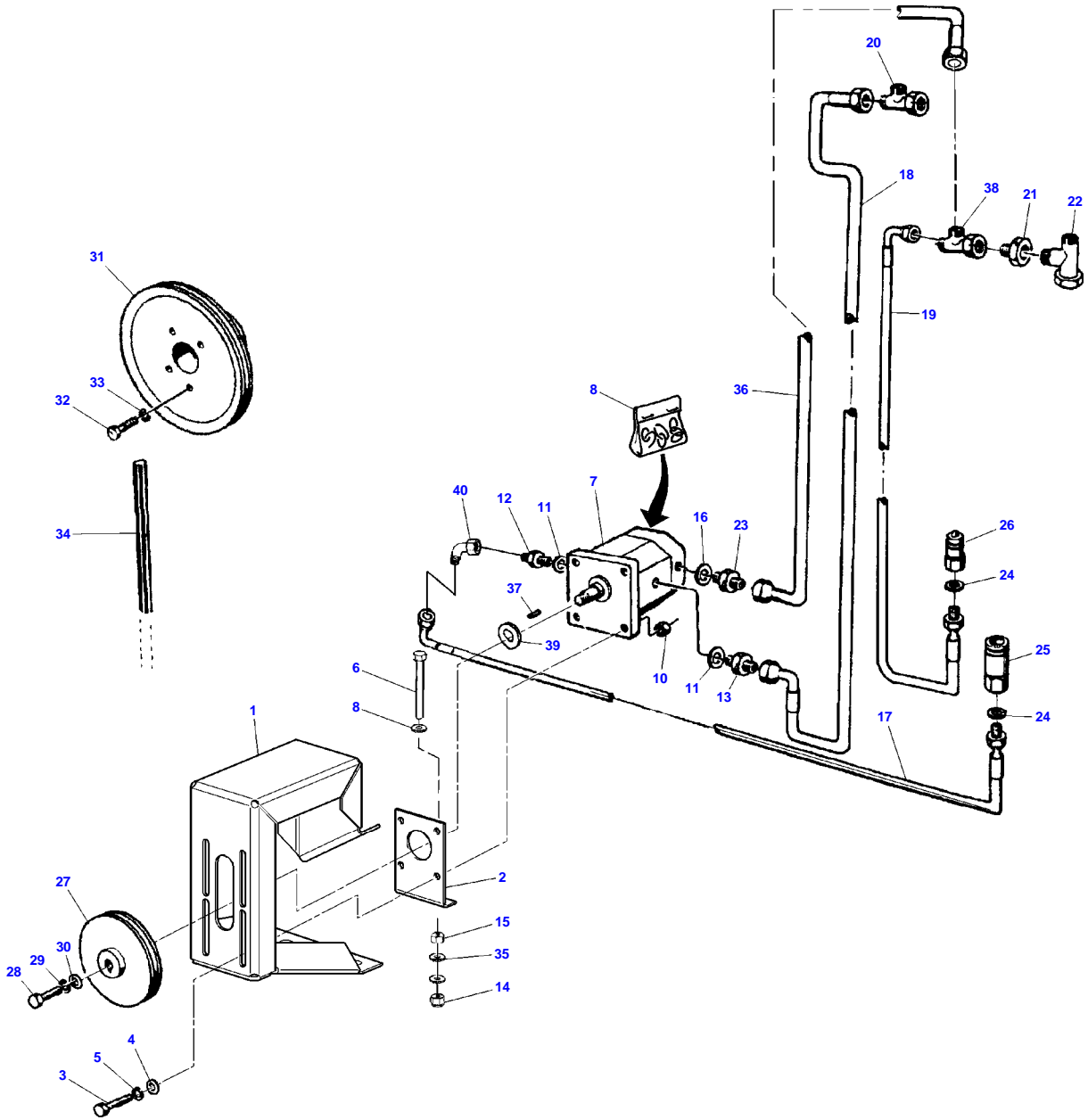


Item	Part Number	Qty	Description	Comments
1	D28085891	1	Spreader	Cpl.
	D49070041	1	Housing	
2	D49070038	1	Rotor	Left Hand
3	D49070037	1	Rotor	Right Hand
4	D49070008	2	Hub	
5	D40404700	14	Hex. Sock. Screw	
6	D41100700	12	Spring Washers	
7	D41087500	2	Locknut	
8	D40402600	2	Hex. Sock. Screw	
9	D41100600	2	Spring Washers	
10	D20400470	2	Washer	
11	D49070045	1	Guard	
12	D49060088	1	Lever	
13	D49070047	1	Cover	
14	D49070049	1	Plate	Left Hand
15	D49070050	1	Plate	Right Hand
16	D49070051	2	Support	Right Hand
17	D41087700	4	Locknut	
18	D40411100	2	Hex. Sock. Screw	
19	D49080079	2	Spacer	
20	D20400426	2	Washer	
21	D49080047	2	Tensioner	
22	D41010900	4	Nut	
23	D40405000	2	Hex. Sock. Screw	
24	D41087500	4	Locknut	
25	D49070102	1	Ram	
26	D49070053	1	Plate	Left Hand
27	D49070054	1	Plate	Right Hand
28	D49070104	1	Yoke	
29	D41087600	20	Locknut	
30	D40400700	8	Hex. Sock. Screw	
31	D20400402	16	Washer	
32	D41087300	8	Locknut	
33	D40407600	2	Hex. Sock. Screw	
34	D20400419	2	Washer	
35	D41100800	2	Spring Washers	
36	D49080102	1	Pivot	
37	D49070103	1	Yoke	
38	D49070056	1	Pressure Valve	
39	D45252800	4	Union	
40	D49070031	2	Connector	
41	D49070022	8	Seal	
42	D49070057	1	Coupling	
43	D49070059	1	Hydraulic Motor	Left Hand
44	D49070060	1	Hydraulic Motor	Right Hand
45	D49070025	2	Bearing	
46	D49070026	4	Flange	
47	D45252600	4	Union	
48	D49070027	4	Seal	
49	D40422700	8	Hex. Sock. Screw	
50	1441462X1	8	Locknut	Replace and repair. Old not interchangeable with new D41087400
51	D49070061	2	Hose	
52	D49070063	2	Hose	
53	D40423000	2	Screw	
54	1441462X1	2	Locknut	Replace and repair. Old not interchangeable with new D41087400
55	D49070064	2	Nut	
56	D49070058	1	Coupling	
57	D49070065	2	Kit, Seal	
58	D45483200	2	O Ring	

FOOTNOTE [A] MAIZE EQUIPMENT

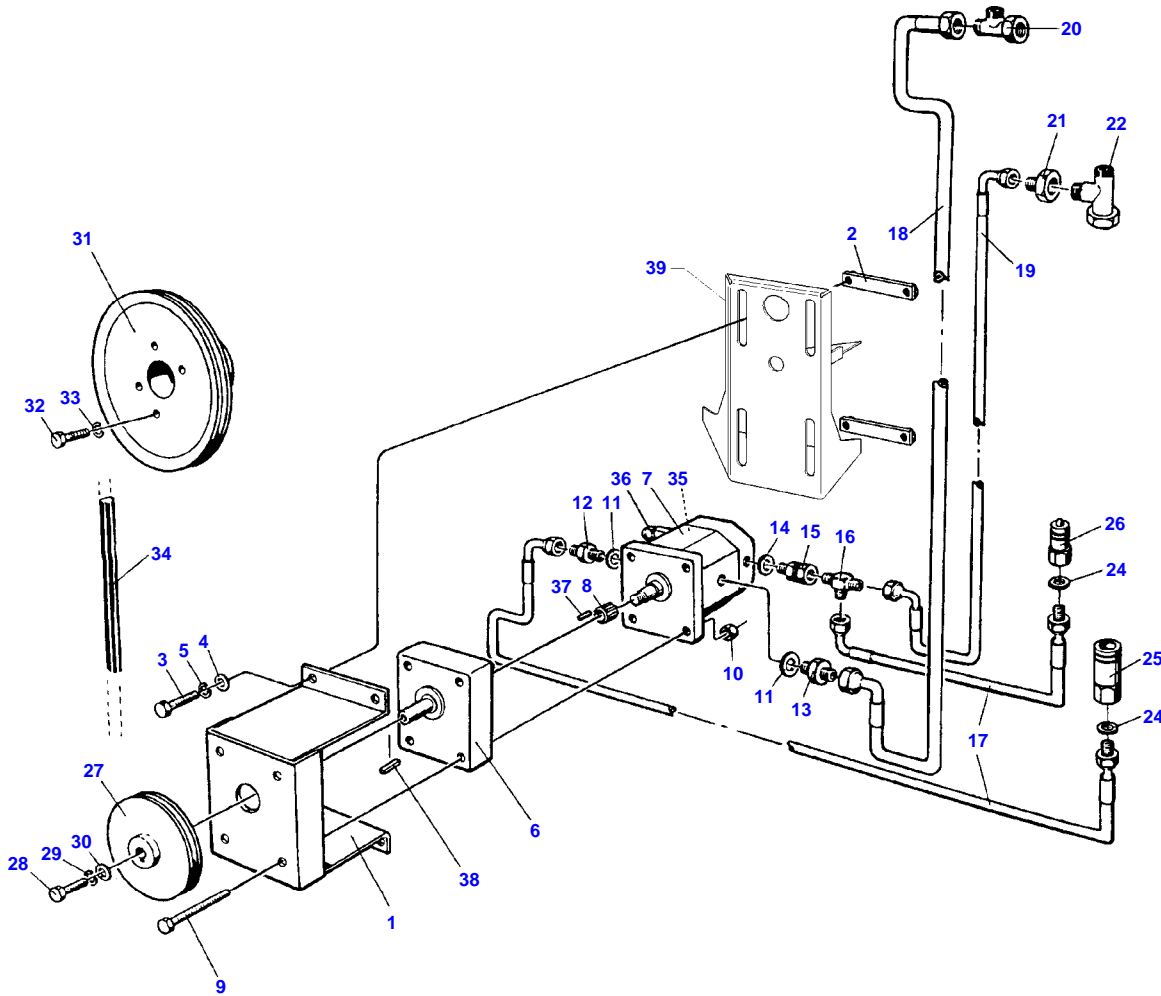
FOOTNOTE [B] OPTIONAL EQUIPMENT

5220 / 5250 COMBINES - 1637410
D-ZFAD-003-B



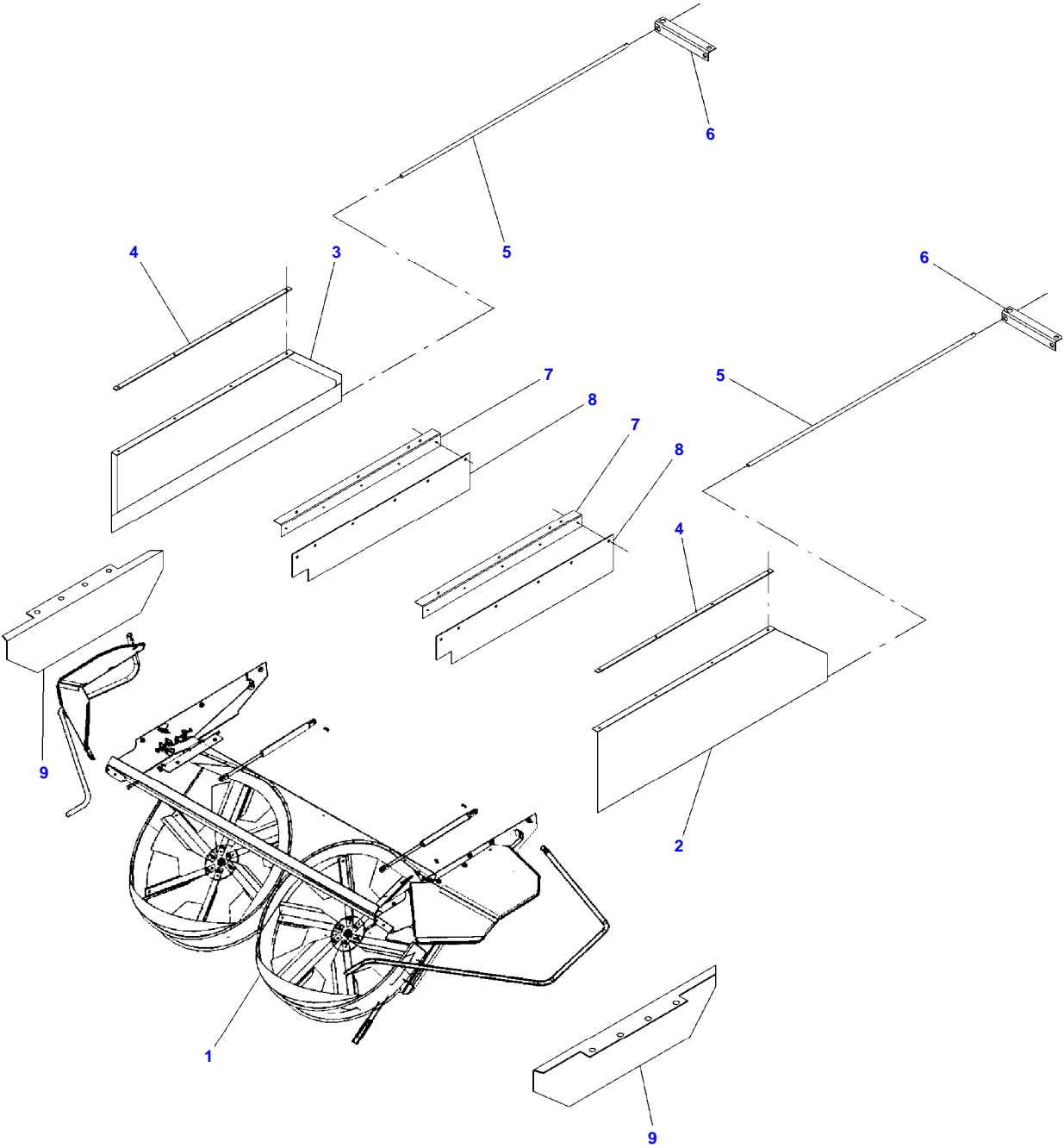
Item	Part Number	Qty	Description	Comments
1	D28485410	1	Bracket	
2	D28485398	1	Bracket	
3	D40405100	4	Hex. Sock. Screw	
4	D20400506	4	Washer	
5	D41100700	4	Spring Washers	
6	D40412700	1	Bolt	
7	D45120038	1	Hydraulic Pump	
8	D45120032	1	Kit, Seal	
9	D40405100	4	Hex. Sock. Screw	
10	D41087500	4	Locknut	
11	D45420100	1	Seal	3/4"
	D45420300	1	Gasket	1/2"
12	D45217400	1	Nipple	
13	D45247400	1	Nipple	
14	D41087700	1	Locknut	
15	D41010900	1	Nut	
16	D45420300	1	Gasket	
17	D45130068	1	Hose	Length 5500mm
18	D45130069	1	Hose	Length 4000mm
19	D45130070	1	Hose	Length 5000mm
20	D45266500	1	Fork	
21	D45273200	1	Union	
22	D45266800	1	Fitting	
23	D45252700	1	Union	
24	D45713700	2	Gasket	Valid from machine/table no,can be used in new as well as in older machines 58975
25	D45135000	1	Union	
26	D45134900	1	Union	
27	D28485390	1	Pulley	
28	D40404900	1	Hex. Sock. Screw	
29	D41100700	1	Spring Washers	
30	D20400408	1	Washer	
31	D28485388	1	Pulley	
32	D40424100	4	Bolt	
33	D41100700	4	Spring Washers	
34	D41921500	1	V Belt	
35	D20400426	3	Washer	
36	D45266300	1	Union	
37	D43102400	1	Key	
38	D45266300	1	Union	
39	D45120039	1	Ring	
40	D45265200	1	Union	

5220 / 5250 COMBINES - 1637410
D-ZFAD-002-A



Item	Part Number	Qty	Description
1	D49070070	1	Bracket
2	D49070071	2	Mounting
3	D40405100	4	Hex. Sock. Screw
4	D20400506	4	Washer
5	D41100700	4	Spring Washers
6	D49070072	1	Support
7	D49070073	1	Pump
8	D49070074	1	Nut
9	D40424500	4	Screw
10	D41087500	4	Locknut
11	D49070075	2	Gasket
12	D49070076	1	Connection
13	D49070077	1	Connection
14	D49070027	1	Seal
15	D49070078	1	Connection
16	D49070079	1	Connection
17	D49070080	2	Hose
18	D49070081	1	Hose
19	D49070082	1	Hose
20	D45266500	1	Fork
21	D45273200	1	Union
22	D45266800	1	Fitting
23	D49070083	2	Connection
24	D49070022	2	Seal
25	D45135000	1	Union
26	D45134900	1	Union
27	D49070084	1	Pulley
28	D40404900	1	Hex. Sock. Screw
29	D41100700	1	Spring Washers
30	D20400411	1	Washer
31	D49070085	1	Pulley
32	D40424100	4	Bolt
33	D41100700	4	Spring Washers
34	D41921500	1	V Belt
35	D49070086	1	Kit, Seal
36	D49070052	1	Pressure Valve
37	D43171100	1	Key
38	D43102400	1	Key
39	D28485235	1	Console

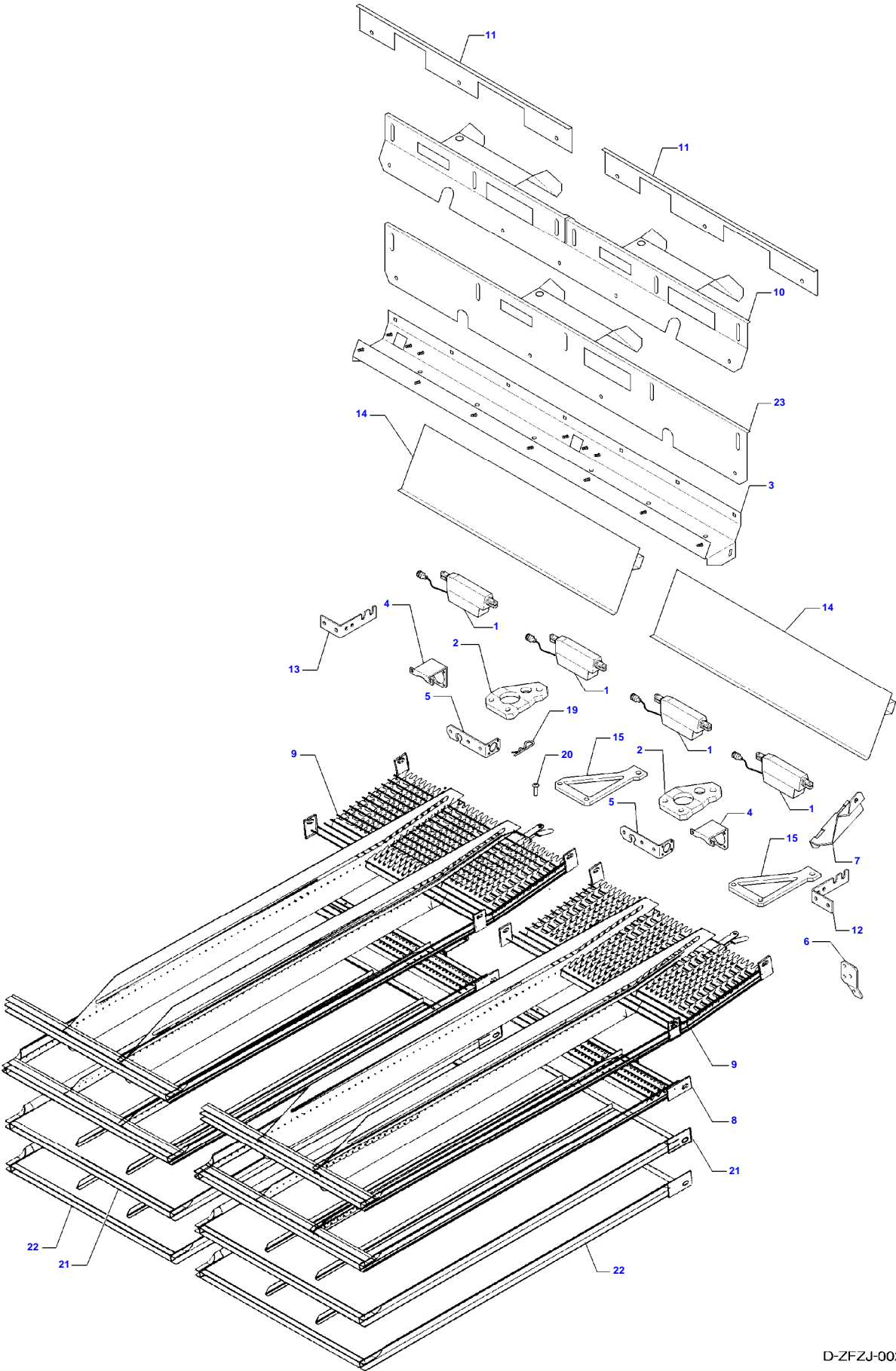
5220 / 5250 COMBINES - 1637410
D-ZFAE-002-B



Windbreak And Side Guard For Chaff Spreader

Item	Part Number	Qty	Description	Comments
1	D28085891	1	Spreader	Cpl. Rekord number 1
	D28086430	1	Spreader	Cpl. Rekord number 2
2	D28185783	1	Panel	
3	D28185784	1	Panel	
4	D28185975	2	Rod	
5	D28185976	2	Tube	
6	D28185785	2	Support	
7	D28186019	2	Angle	Up to Serial or Engine Number 58548
8	D28186020	2	Side	Up to Serial or Engine Number 58548
9	D28186666	2	Side	From Serial or Engine Number 58549

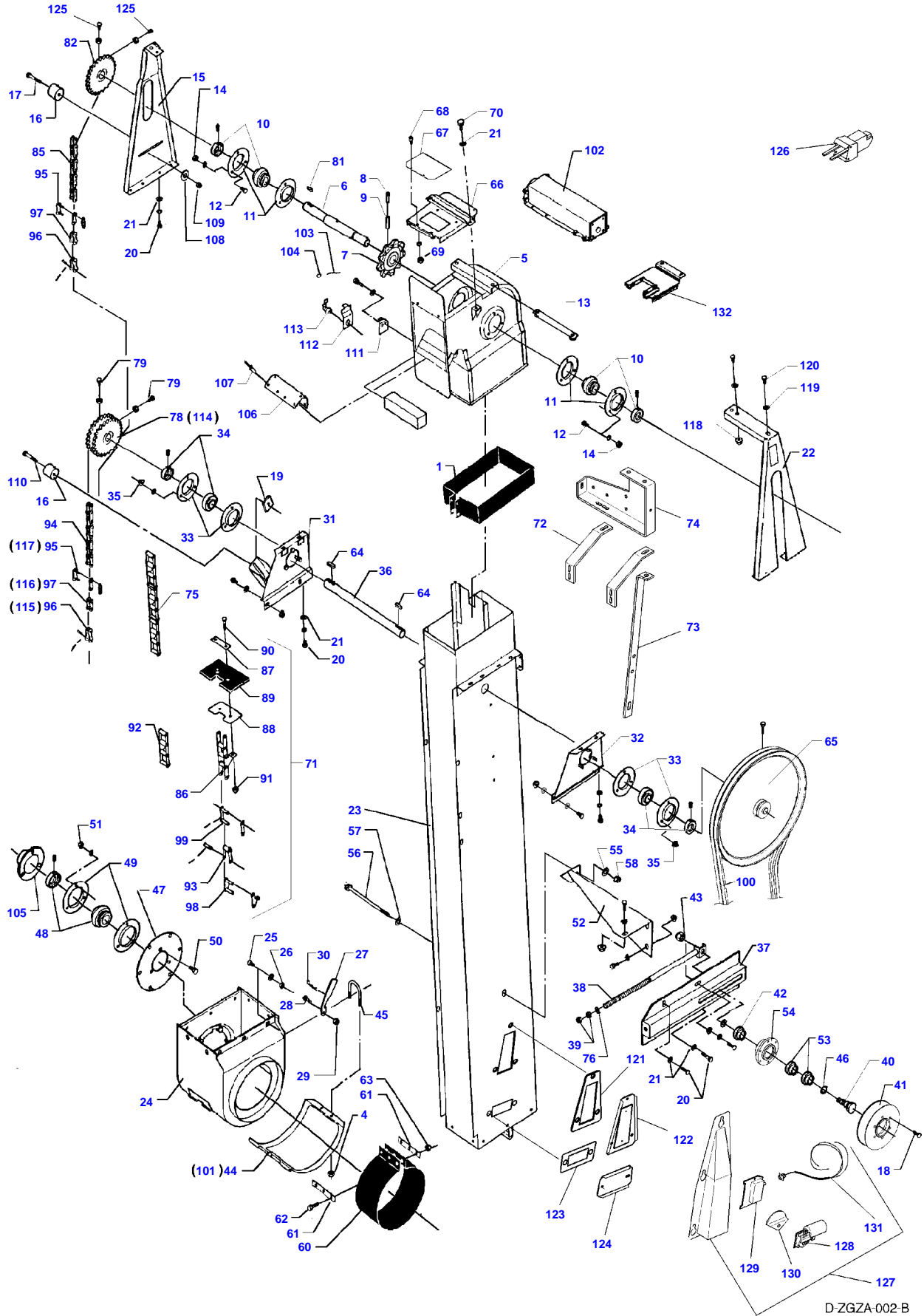
5220 / 5250 COMBINES - 1637410
D-ZFZJ-002-B



Item	Part Number	Qty	Description	Comments
1	D28482313	4	Actuator	
2	D28482314	2	Bracket	
3	D28482330	1	Bolt	
4	D28482343	2	Stop	
5	D28482347	2	Stop	
6	D28482348	1	Console	
7	D28482352	1	Console	
8	D28482374	2	Sieve	
9	D28482377	2	Sieve	
10	D28482387	1	Rake	
11	D28482391	2	Plate	
12	D28482396	1	Support	
13	D28482397	1	Support	
14	D28482399	1	Profile	
15	D28482400	2	Bracket	
16	D28482410	1	Support	
17	D28482411	1	Support	
18	D28482412	1	Support	
19	D44358000	8	Hair Pin	
20	D45905500	8	Bolt	
21	D28482379	2	Grille	Diameter 2,5 MM
22	D28482380	2	Grille	Diameter 5 MM
23	D28482392	1	Plate	

Page Title	Page Number
Filling Elevator	007-0001
Filler Pipe	007-0002
Return Elevator	007-0003
Returns Thresher	007-0004

5220 / 5250 COMBINES - 1637410
D-ZGZA-002-B



D-ZGZA-002-B

Thank you so much for reading.
Please click the “Buy Now!”
button below to download the
complete manual.



After you pay.

You can download the most
perfect and complete manual in
the world immediately.

Our support email:

ebooklibonline@outlook.com