

# FORD



**FORD**

**NEWHOLLAND**

## Service Manual

---

# LGT 14D and 16D Diesel Lawn and Garden Tractor

40001420



Ford New Holland, Inc.  
New Holland, PA 17557

Reprinted

# PART 1 ENGINE

## Chapter 1 ENGINE AND LUBRICATION SYSTEM

| Section  | Page |
|--|------|
| A. DESCRIPTION AND OPERATION .....                                 | 1    |
| B. ENGINE OVERHAUL   |      |
| • CYLINDER HEAD, VALVES AND RELATED COMPONENTS .....               | 10   |
| • ENGINE FRONT COVER, TIMING GEARS, OIL PUMP<br>AND CAMSHAFT ..... | 19   |
| • CONNECTING RODS, BEARINGS, PISTONS AND<br>CYLINDER BLOCK.....    | 27   |
| • MAIN BEARINGS, CRANKSHAFT AND FLYWHEEL.....                      | 35   |

## Chapter 2 COOLING SYSTEM

| Section                            | Page |
|------------------------------------|------|
| A. DESCRIPTION AND OPERATION ..... | 43   |
| B. OVERHAUL .....                  | 45   |

## Chapter 3 TROUBLE SHOOTING, SPECIFICATIONS AND SPECIAL TOOLS

| Section                            | Page |
|------------------------------------|------|
| A. TROUBLE SHOOTING .....          | 51   |
| B. SPECIFICATIONS .....            | 55   |
| C. SPECIAL TOOLS .....             | 62   |
| D. COMPRESSION TEST AND TOOLS..... | 62   |

# PART 1 ENGINE

## Chapter 1 ENGINE AND LUBRICATION SYSTEM

| Section  | Page |
|--|------|
| A. DESCRIPTION AND OPERATION .....                                 | 1    |
| B. ENGINE OVERHAUL   |      |
| • CYLINDER HEAD, VALVES AND RELATED COMPONENTS .....               | 10   |
| • ENGINE FRONT COVER, TIMING GEARS, OIL PUMP<br>AND CAMSHAFT ..... | 19   |
| • CONNECTING RODS, BEARINGS, PISTONS AND<br>CYLINDER BLOCK .....   | 27   |
| • MAIN BEARINGS, CRANKSHAFT AND FLYWHEEL .....                     | 35   |

### A. DESCRIPTION AND OPERATION

This chapter describes the overhaul and repair of the Ford 14D and 16D HP LGT diesel engine.

The Ford 14D and 16D HP LGT tractors, Figure 1, are equipped with a 3-cylinder in-line, four cycle, liquid cooled, overhead valve engine. The 14D and 16D HP LGT engines are identified by code number E643 (LGT 14D) and E673 (LGT 16D). The code number is cast into the left side of the block and readily accessible for reference.



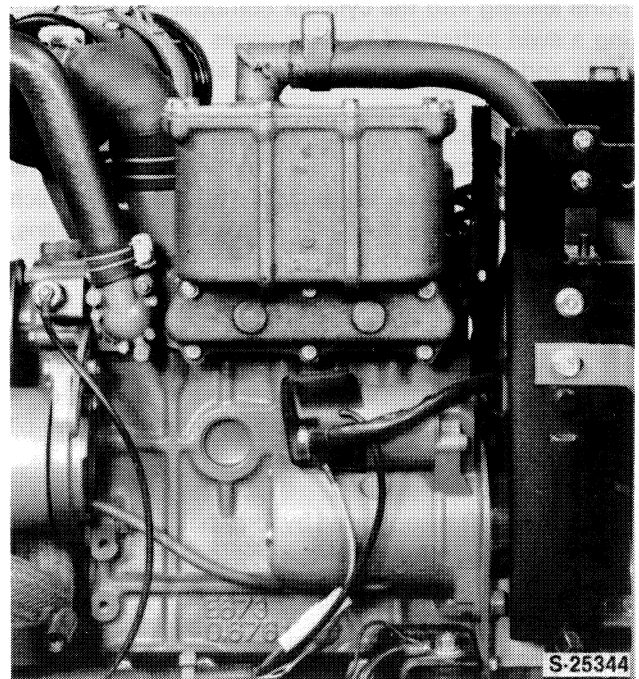
**Figure 1**  
LGT Diesel Tractor (Ford 14 HP Shown)

The 14D LGT engine has a 37.6 cu. in. (617 cc) displacement with a compression ratio of 23.2:1.

PRINTED IN U.S.A.

The 16D LGT engine has a 41.2 cu. in. (676 cc) displacement with a compression ratio of 23.6 :1.

The engine is positioned in the tractor chassis in reverse position, i.e., with the engine (fan, radiator, water pump, etc.) facing the rear of the tractor as shown, Figure 2.



**Figure 2**  
LGT Diesel Engine

All reference to left, right, front and rear in this repair manual is made as follows:

Thank you so much for reading.  
Please click the “Buy Now!”  
button below to download the  
complete manual.



After you pay.

You can download the most  
perfect and complete manual in  
the world immediately.

Our support email:

[ebooklibonline@outlook.com](mailto:ebooklibonline@outlook.com)