

Massey Ferguson®

1547 / 1552
Compact Tractor

SERVICE MANUAL 4283094M2

CONTENTS

GENERAL INFORMATION	01
ENGINE	02
MAJOR COMPONENTS	03
CLUTCH	04
TRANSMISSION	05
HYDROSTATIC TRANSMISSION	06
REAR AXLE AND BRAKES	07
FRONT AXLE	08
HYDRAULICS	09
ELECTRICAL	10
HYDROSTATIC STEERING	11
CAB AND AIR CONDITIONING	12

INPUT GEARS

INPUT GEAR DISASSEMBLY

FIGS. 20–21: Separate the tractor between the front and rear transmission housing.

Remove the gear shift lever and metal cover.



FIG. 20



FIG. 21

Input Gears

FIGS. 22–23: Remove the four wheel drive shifter.



FIG. 22



FIG. 23

FIG. 24: Remove bolts and metal support from the front transmission case.

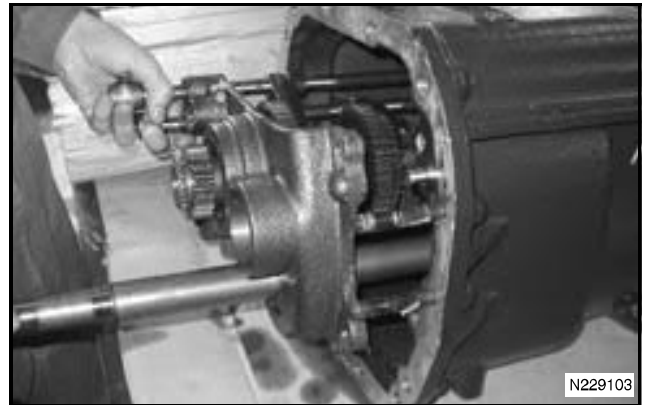


FIG. 24

FIG. 25: Remove main change gear clusters as an assembly.

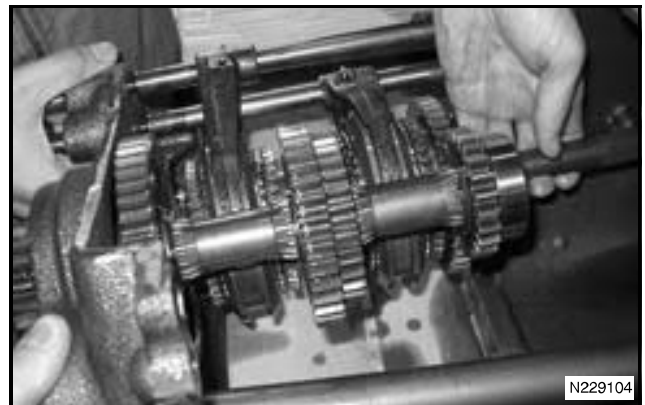


FIG. 25

FIG. 26: Remove the bolts from the PTO support.

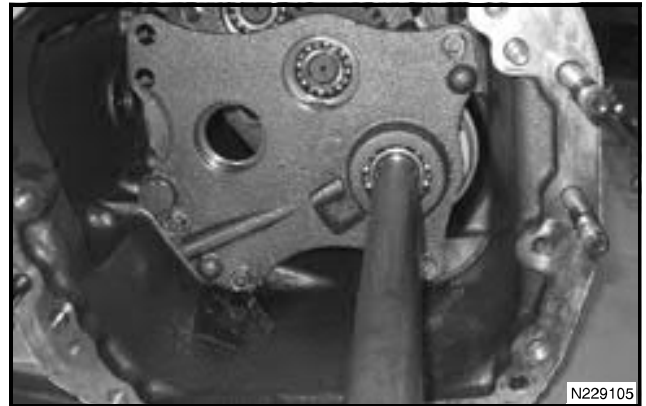


FIG. 26

FIG. 27: Remove the PTO support and PTO clutch pack as an assembly.

NOTE: The PTO brake tab (1) must be inserted into the locking groove in the support metal.

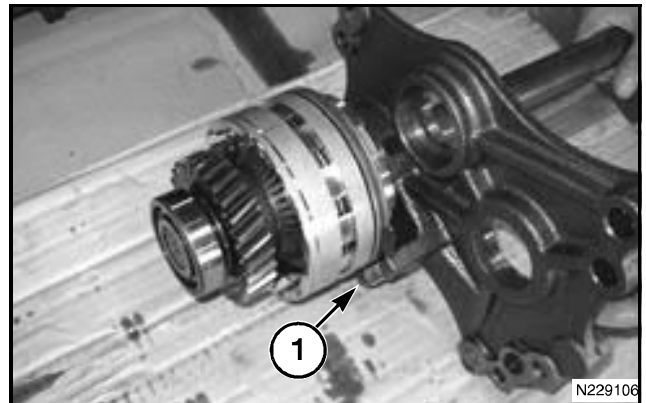
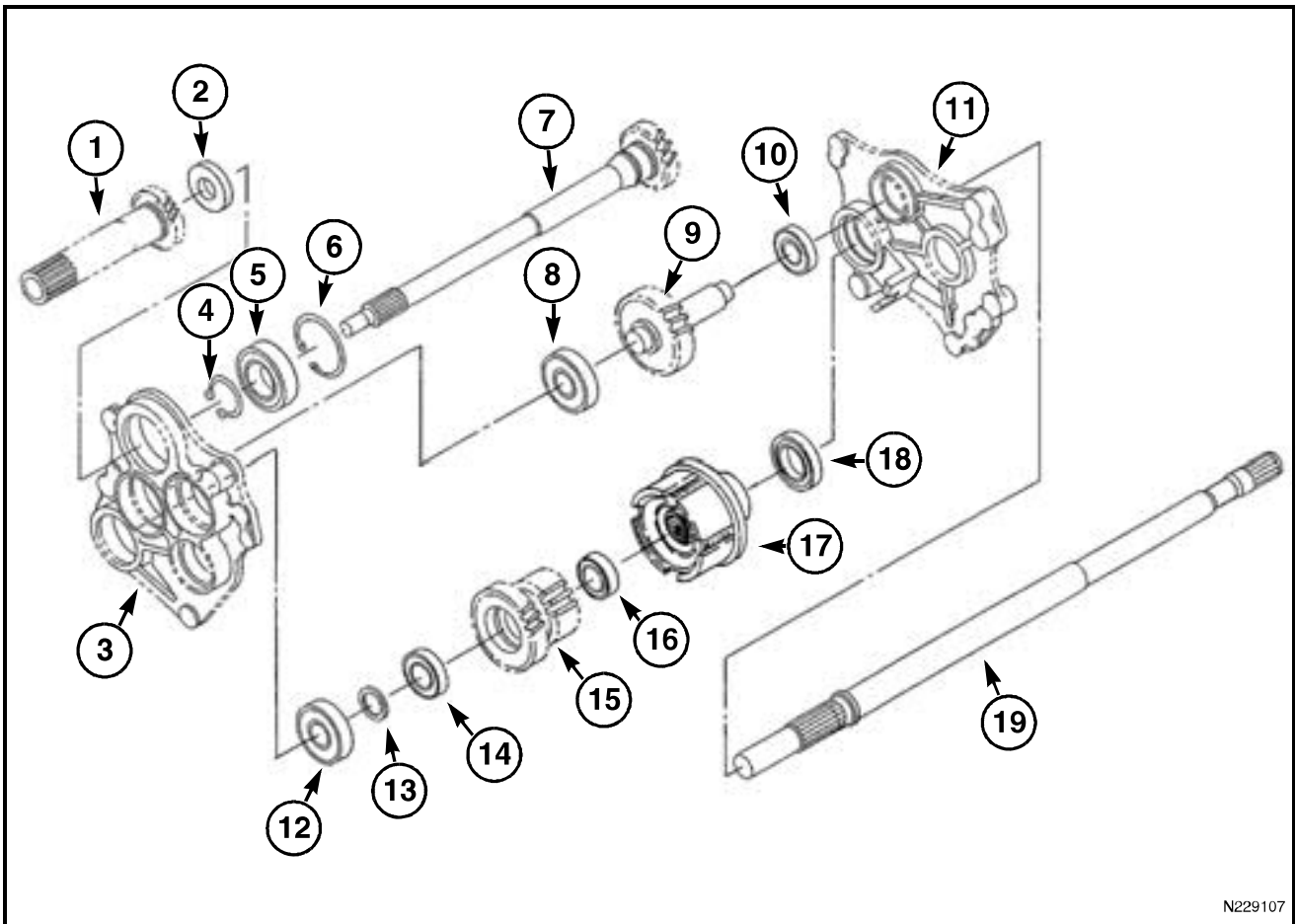


FIG. 27

Input Gears



N229107

FIG. 28

FIG. 28: Front PTO gear system

- | | |
|-------------------------------|--------------------------------|
| (1) Shaft | (10) Bearing |
| (2) Oil Seal | (11) Bearing and Shaft Support |
| (3) Bearing and Shaft Support | (12) Bearing |
| (4) Snap Ring | (13) Collar |
| (5) Bearing | (14) Bearing |
| (6) Snap Ring | (15) Gear |
| (7) Shaft | (16) Bearing |
| (8) Bearing | (17) PTO Clutch |
| (9) Gear | (18) Bearing |
| | (19) Shaft |

FIG. 29: Remove the input gears and support metal as an assembly.

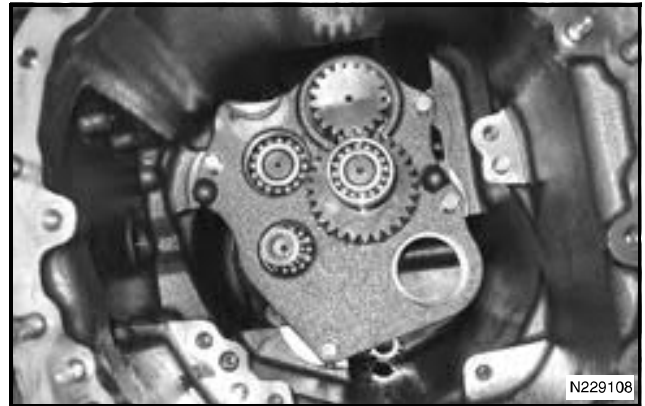


FIG. 29

FIG. 30: Remove reverse gear, synchronizer, and shift fork.



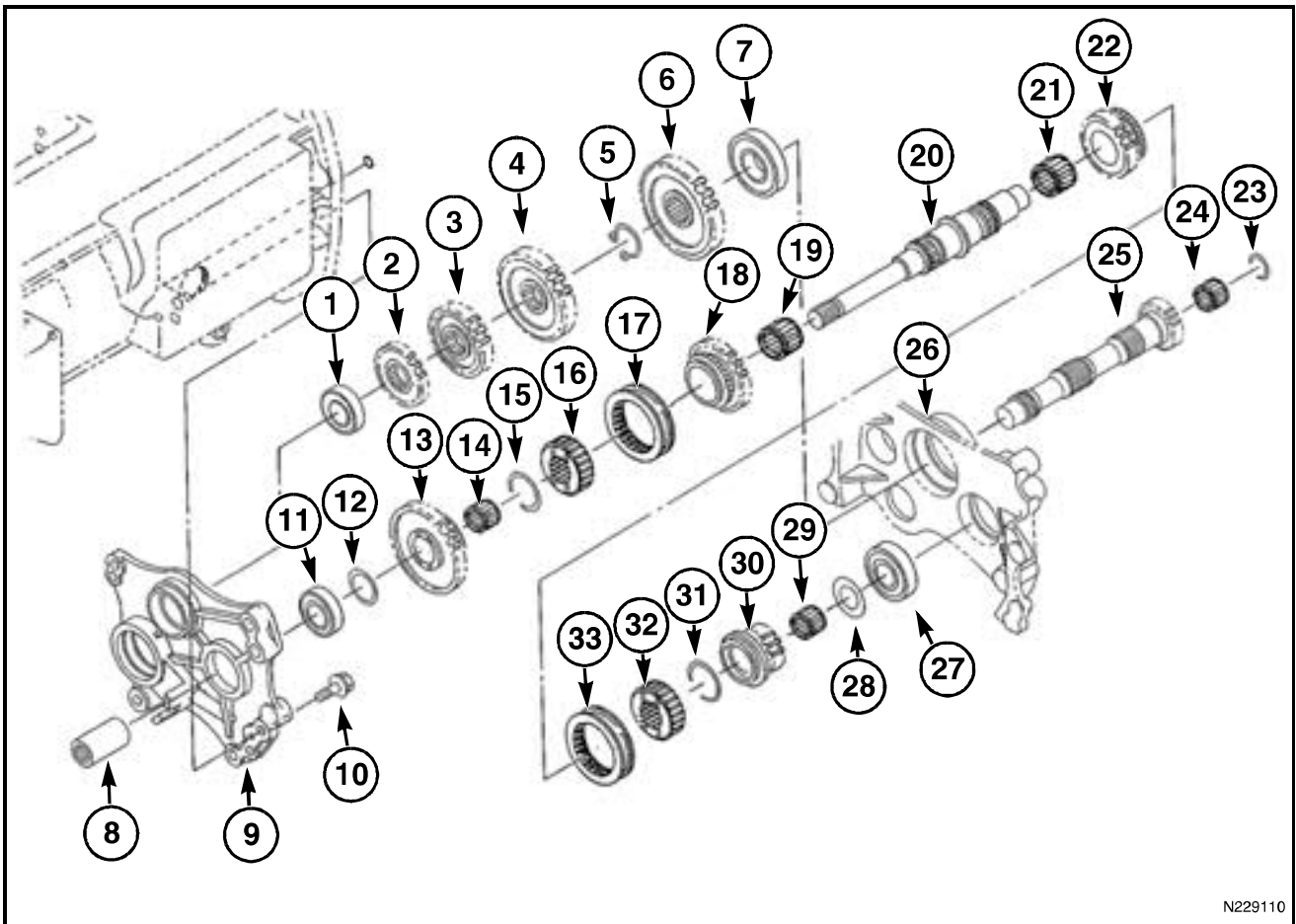
FIG. 30

FIG. 31: Remove the reverse gear, synchronizer, and shift fork.



FIG. 31

Input Gears



N229110

FIG. 32

FIG. 32: Main gear assembly

- | | |
|---------------------|---------------------|
| (1) Bearing | (17) Coupling |
| (2) Gear | (18) Gear |
| (3) Gear | (19) Needle Bearing |
| (4) Gear | (20) Main Shaft |
| (5) Snap Ring | (21) Needle Bearing |
| (6) Gear | (22) Gear |
| (7) Bearing | (23) Snap Ring |
| (8) Collar | (24) Needle Bearing |
| (9) Support | (25) Gear |
| (10) Bolt | (26) Support |
| (11) Bearing | (27) Bearing |
| (12) Washer | (28) Washer |
| (13) Gear | (29) Needle Bearing |
| (14) Needle Bearing | (30) Gear |
| (15) Snap Ring | (31) Snap Ring |
| (16) Hub | (32) Hub |
| | (33) Coupling |

Assembly

FIG. 33: Install the input gear assembly with the support metal.

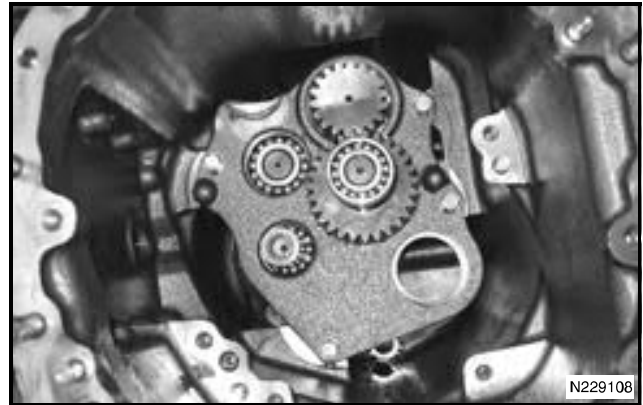


FIG. 33

FIG. 34: Install the PTO clutch assembly and PTO support.

NOTE: Make sure the PTO clutch brake tab is aligned inside the groove in the support housing.

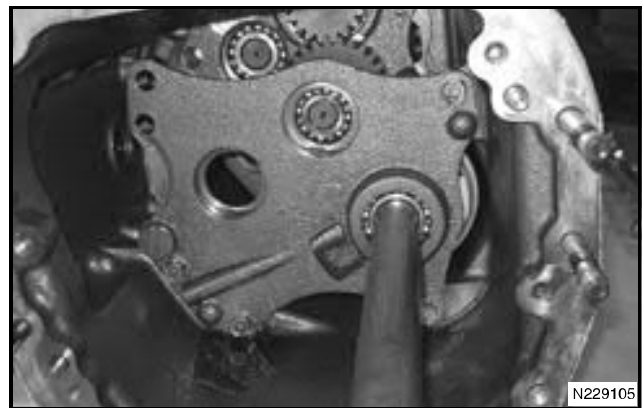


FIG. 34

Input Gears

FIGS. 35–36: Install the main change gear clusters and rear support as an assembly.



FIG. 35



FIG. 36

Input Housing

FIG. 37: Separate transmission between the engine and the front housing.

Remove the wire (1).

Thread a bolt into the pin (2) and attach a slide hammer to the bolt.

Remove the pin.

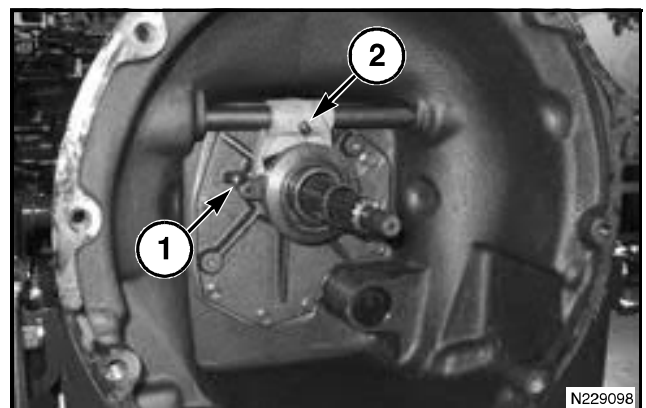


FIG. 37

Input Gears

FIGS. 38–39: Thread two bolts into the input cover and remove the input cover.

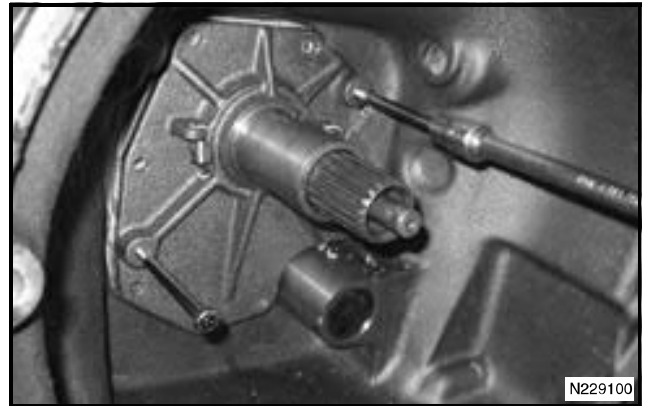


FIG. 38



FIG. 39

NOTES

TRANSMISSION MAIN CHANGE GEARS

MAIN GEAR SHIFT

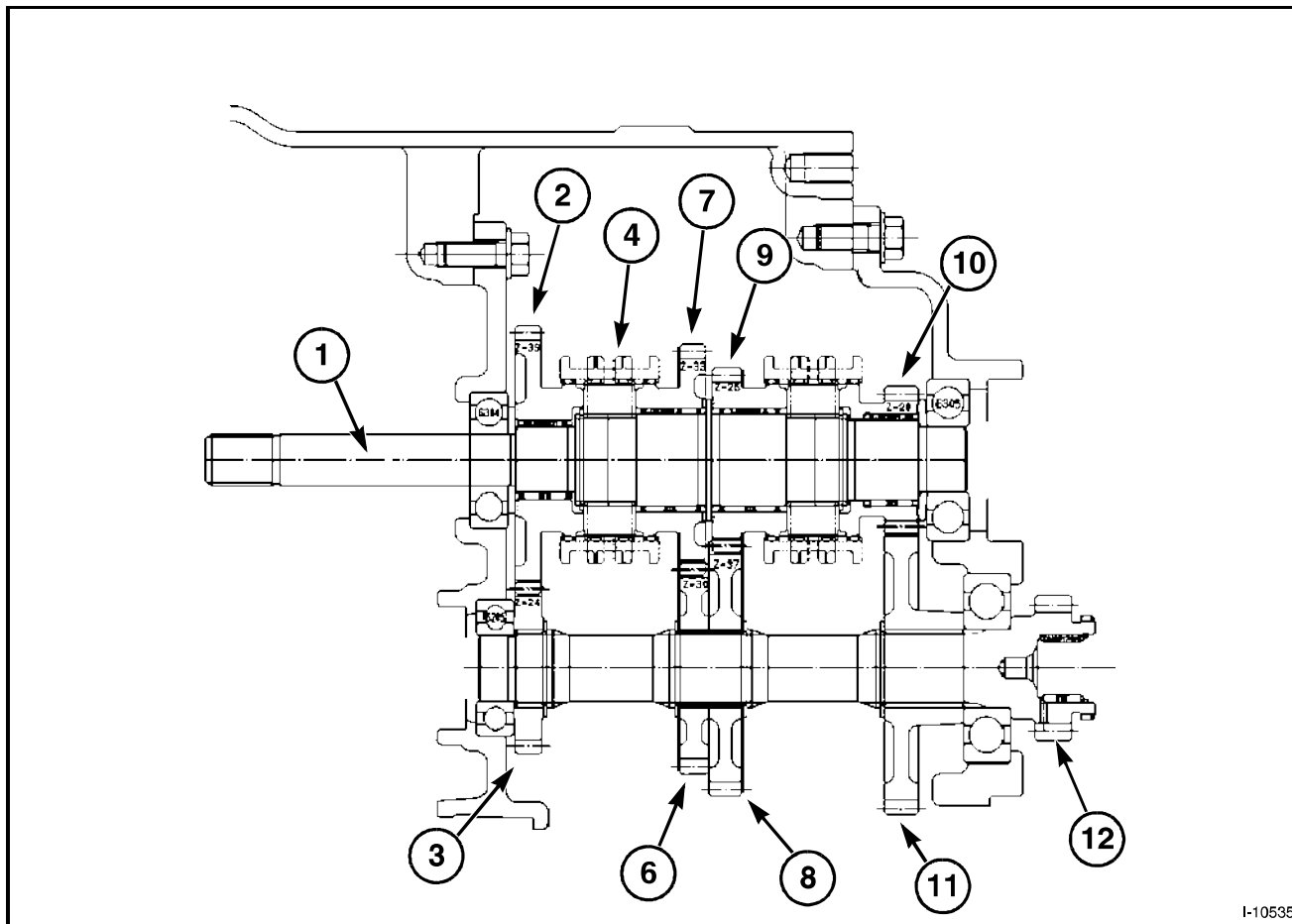


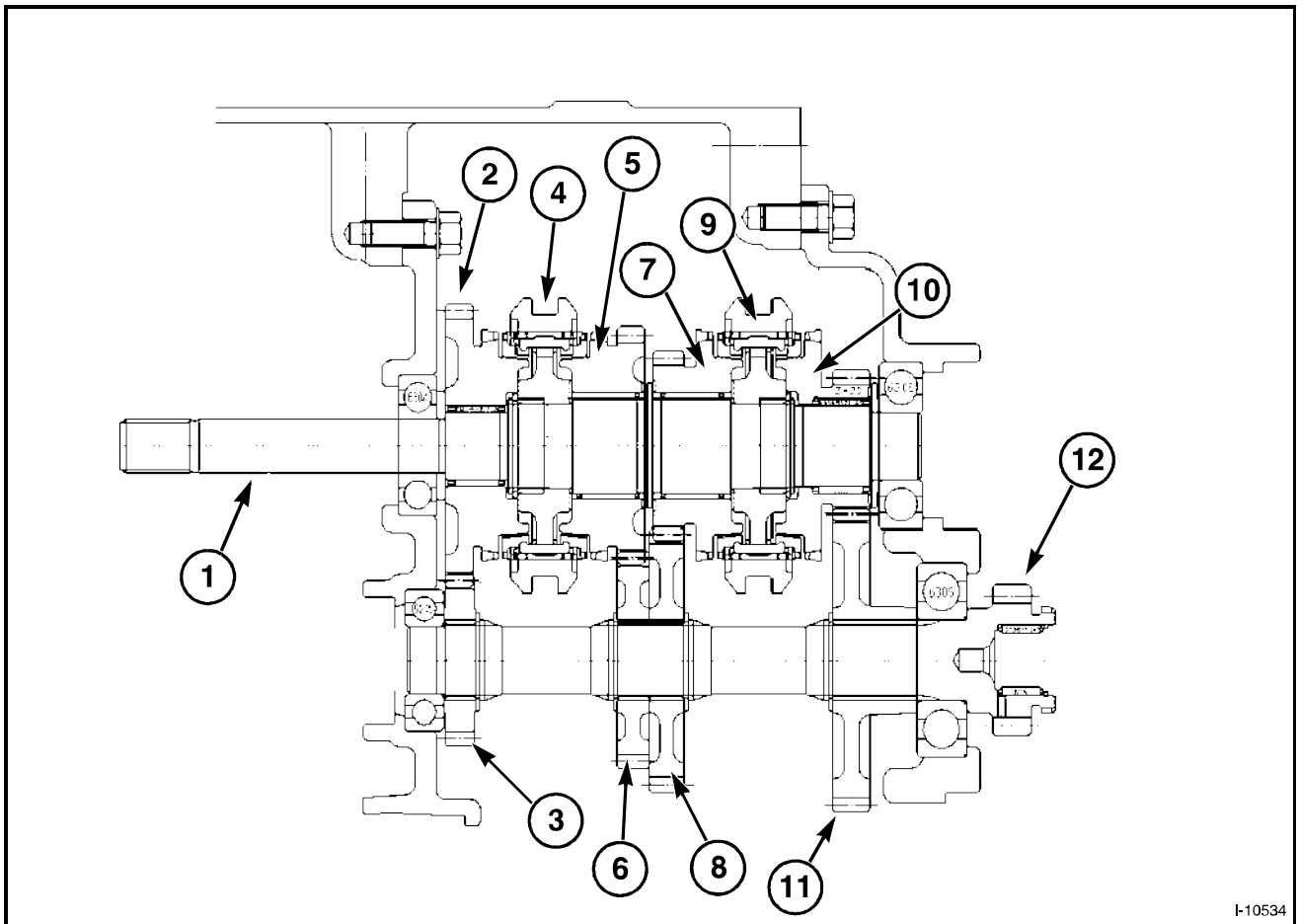
FIG. 40

FIG. 40: Type S Synchro Shuttle

- (1) Main Shaft
- (2) 4th Change Gear (39T) (40T)
- (3) 4th Counter Gear (24T) (23T)
- (4) Synchromesh
- (5) 3rd Change Gear (33T)
- (6) 3rd Counter Gear (30T)
- (7) 2nd Change Gear (26T)
- (8) 2nd Change Gear (37T)
- (9) Synchromesh
- (10) 1st Change Gear (20T)
- (11) 1st Counter Gear (43T)
- (12) Counter Shaft (16T)

The main gear shift uses a constant mesh type transmission.

Transmission Main Change Gears



I-10534

FIG. 41

FIG. 41: Type P/Q Power Shuttle and Power Shift

- (1) Main Shaft
- (2) 4th Change Gear (39T) (40T)
- (3) 4th Counter Gear (24T) (23T)
- (4) Synchromesh
- (5) 3rd Change Gear (33T)
- (6) 3rd Counter Gear (30T)
- (7) 2nd Change Gear (26T)
- (8) 2nd Change Gear (37T)
- (9) Synchromesh
- (10) 1st Change Gear (20T)
- (11) 1st Counter Gear (43T)
- (12) Counter Shaft (16T)

The main gear shift uses a synchromesh type transmission.

PRECAUTIONS FOR ASSEMBLY

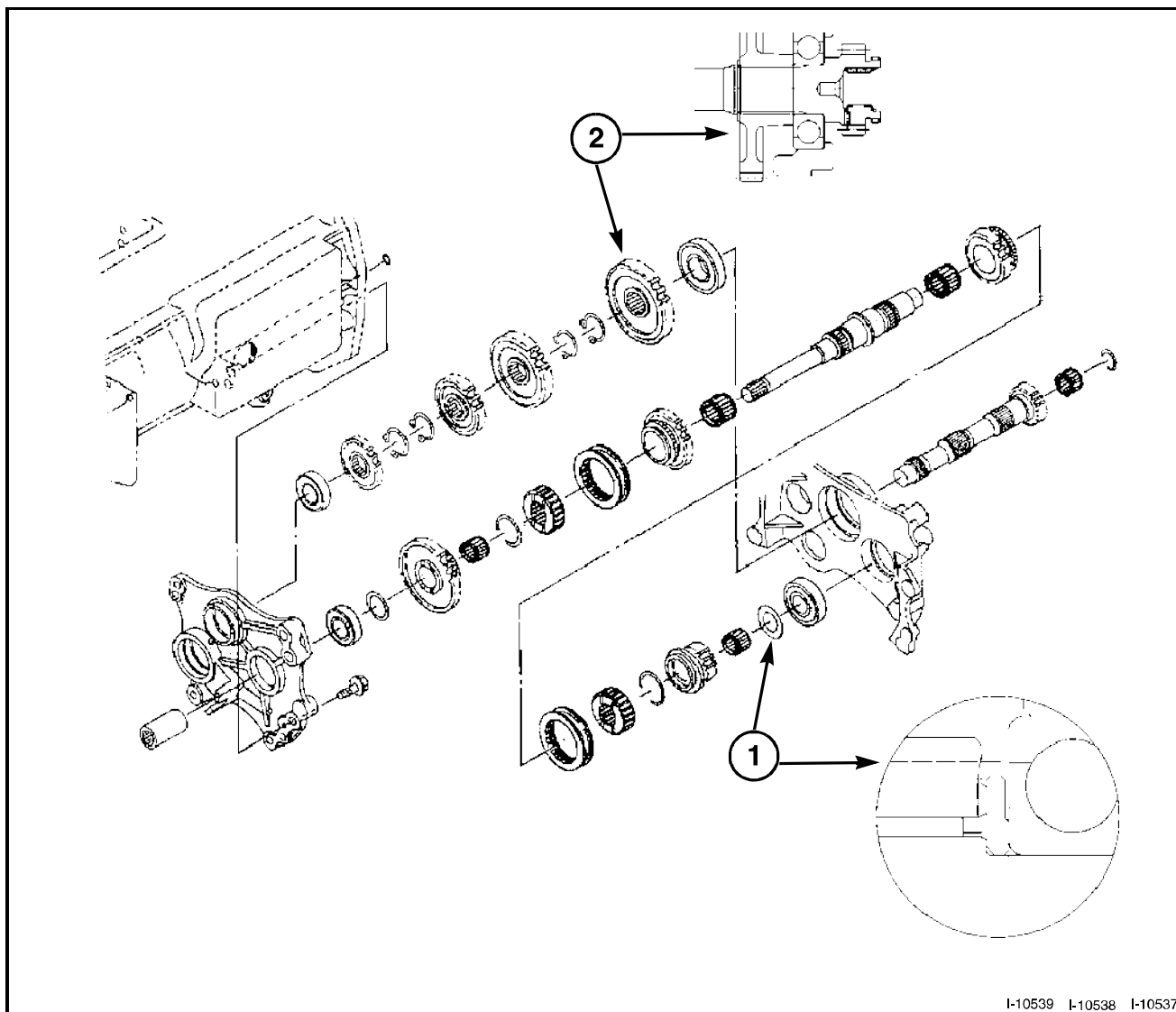


FIG. 42

FIG. 42: Precautions for assembly - Synchro Shuttle

- (1) Installed direction of washer
- (2) Installed direction of Gear

Transmission Main Change Gears

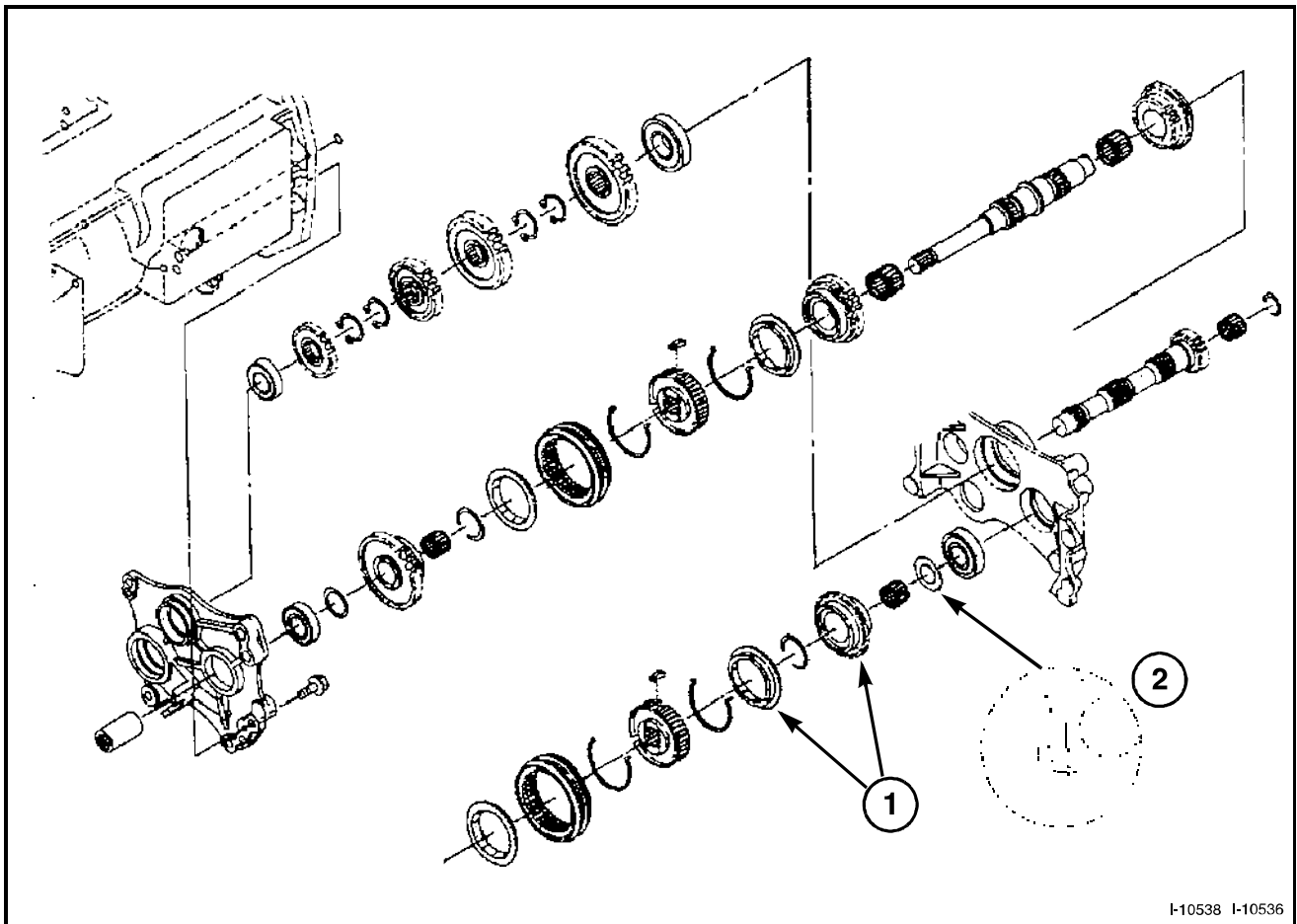
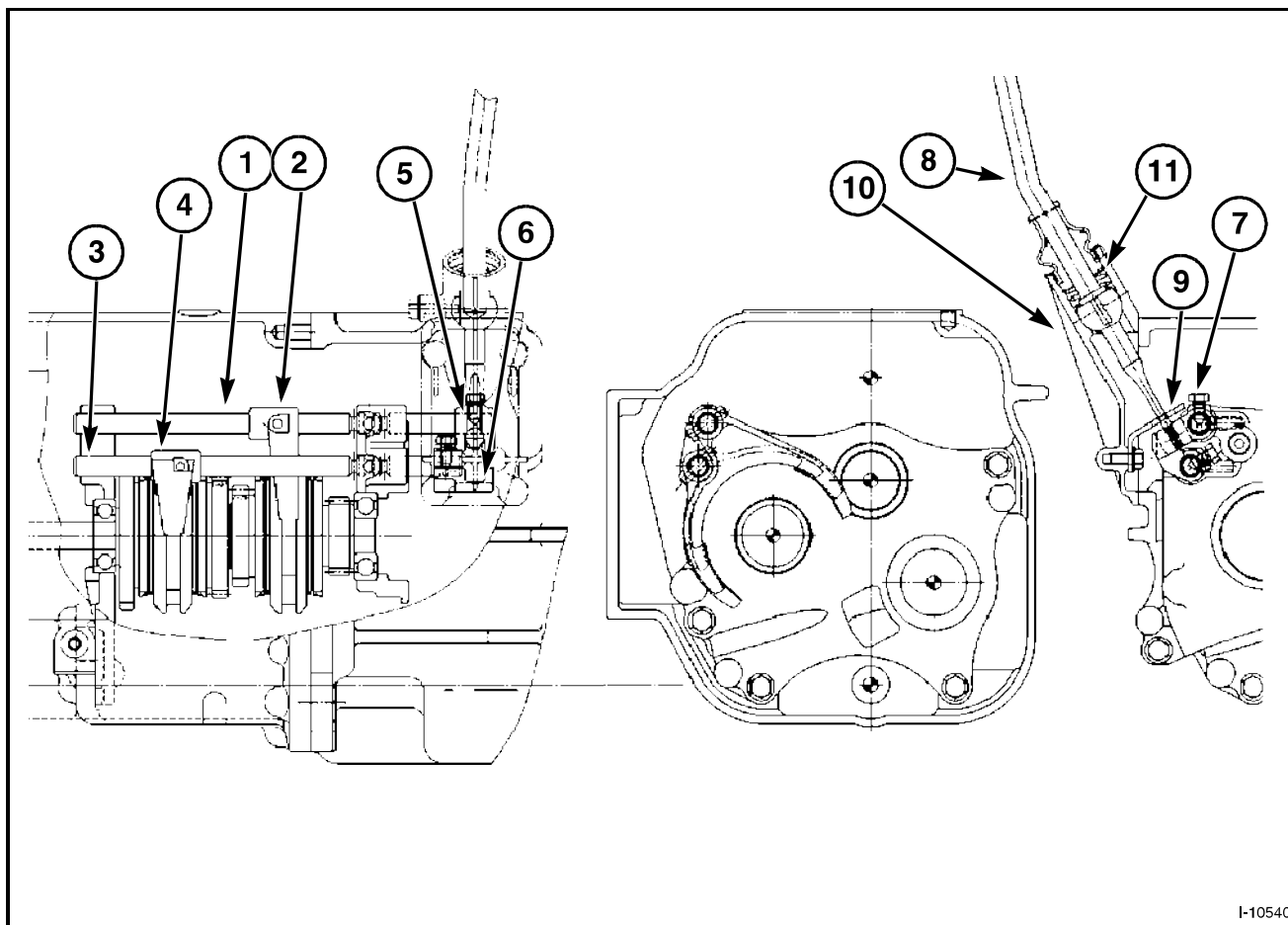


FIG. 43

FIG. 43: Precautions for assembly - Power Shuttle and Power Shift

- (1) Apply Oil to Synchro Mesh
- (2) Installed Direction of Washer

MAIN SHIFT LEVER



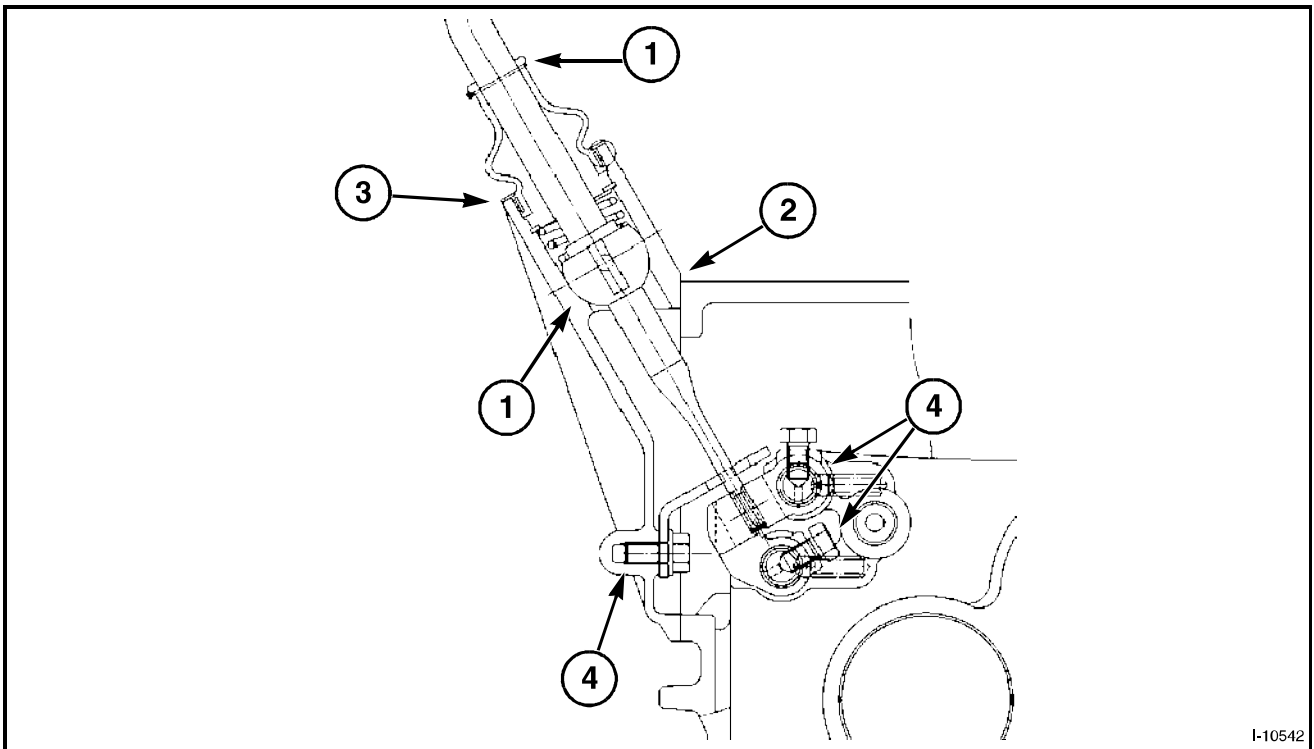
I-10540

FIG. 44

FIG. 44: Synchro Shuttle and Power Shuttle Shift Lever

- (1) Shift Rod (1-2)
- (2) Shift Fork (1-2)
- (3) Shift Rod (3-4)
- (4) Shift Fork (3-4)
- (5) Shift Arm (1-2)
- (6) Shift Arm (3-4)
- (7) Bolt
- (8) Lever
- (9) Guide
- (10) Shift Housing
- (11) Spring

Transmission Main Change Gears



I-10542

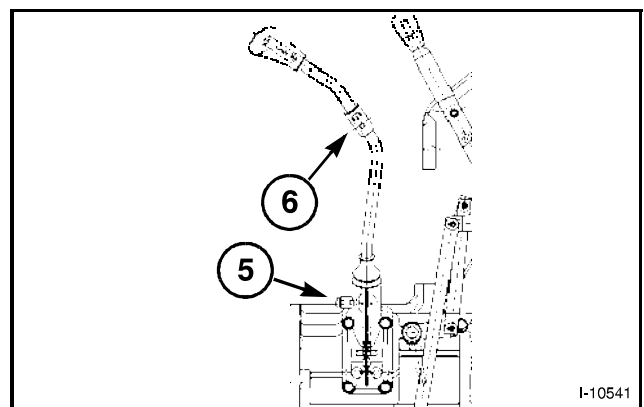
FIG. 45

FIG. 45: Precautions for assembly of main shift lever.

Wire rubber cover

- (1) Apply grease
- (2) Apply silicone to the shift housing
- (3) Apply bond to rubber
- (4) Apply loctite (chemiseal L324) to the bolt
- (5) Apply sealant to the bolt

FIG. 46: Apply loctite to the bolts (5), and (6)



I-10541

FIG. 46

Thank you so much for reading.
Please click the “Buy Now!”
button below to download the
complete manual.



After you pay.

You can download the most
perfect and complete manual in
the world immediately.

Our support email:

ebooklibonline@outlook.com