

Massey Ferguson®

8816 / 8824 / 8824-70cm
Planter

WORKSHOP SERVICE MANUAL 4283380M1 A Rev.

CONTENTS

| | |
|----------------------------|----|
| GENERAL INFORMATION | 01 |
| ROW UNIT | 02 |
| DRIVE TRANSMISSION..... | 03 |
| AIR SYSTEM | 04 |
| HYDRAULICS | 05 |
| ELECTRICAL | 06 |
| FRAME | 07 |
| TROUBLESHOOTING | 08 |
| FERTILIZER SYSTEM | 09 |
| CONSOLES AND MONITORS..... | 10 |

Massey Ferguson®

**8816 / 8824 / 8824-70cm
Planter**

**WORKSHOP SERVICE MANUAL
4283380M1**

01 - General Information

Contents

GENERAL INFORMATION 01-1

 General Information 01-1

 Serial Number Plate Location 01-2

SAFETY

 Safety Alert Symbol 01-3

 Safety Messages 01-3

 Informational Messages 01-4

 Safety Signs 01-4

 General Operation and Service 01-5

 Operating 01-5

 Agricultural Chemicals 01-6

 Transporting 01-6

 Servicing 01-7

SPECIFICATIONS

 8816-30 in / 8824-30 in 01-9

 Frame 01-9

 Tires and Wheels 01-9

 8816 01-9

 8824 01-9

 Markers (Optional) 01-10

 Row Units 01-10

 Air System 01-10

 Hydraulic System 01-10

 Shear Pins 01-11

 Electronic Seed Drive Controller 01-11

 Fuse 01-11

 Approximate Shipping Weights 01-11

 8824-70cm 01-12

 Frame 01-12

 Tires and Wheels 01-12

 8824-70cm 01-12

 Markers 01-12

 Row Units 01-13

 Air System 01-13

 Hydraulic System 01-13

 Shear Pins 01-13

 Monitor 01-13

 Fuse 01-14

 Approximate Shipping Weights 01-14

FIELD OPERATIONS AND ADJUSTMENTS

Contents

| | |
|--|-------|
| Tractor Preparation | 01-15 |
| Recommended Tractor Horsepower | 01-15 |
| Recommended Tractor Horsepower With Fertilizer Openers | 01-15 |
| Wheel Tread Spacing | 01-15 |
| Tractor PTO | 01-16 |
| Tire Inflation | 01-16 |
| Front Weights | 01-16 |
| Hydraulic Requirements | 01-16 |
| Electrical Requirements | 01-16 |
| Connecting the Planter to the Tractor | 01-16 |
| Three-point Hitch | 01-16 |
| Drawbar Hitch | 01-18 |
| Hydraulic Lines | 01-18 |
| Pump Fluid | 01-19 |
| Control Box Switches | 01-21 |
| Operating Notes | 01-21 |
| Folding and Unfolding the Planter | 01-22 |
| Safety | 01-22 |
| Folding Procedure | 01-23 |
| Unfolding Procedure | 01-24 |
| Markers | 01-26 |
| Operation | 01-26 |
| Sequence Valve | 01-26 |
| Position Switch | 01-27 |
| Shear Bolts | 01-27 |
| Seed Recommendations | 01-27 |
| Initial Pressure Settings | 01-28 |
| Liquid Fertilizer | 01-29 |
| Tire Pressure and Radius - Piston Pump Drive | 01-29 |
| Piston Pump Chain | 01-29 |
| Distribution to Openers | 01-30 |
| Check Valve Orifices | 01-31 |
| Checking Application Rate | 01-32 |
| Piston Pump Rate Chart - Double Chain | 01-32 |
| Piston Pump Rate Chart - Single Chain | 01-33 |
| Piston Pump Slide Chart - Ground Drive | 01-34 |
| Fertilizer Openers | 01-35 |
| Double-Disc Openers | 01-35 |
| Single-Disc Openers | 01-35 |
| General Opener Adjustments | 01-36 |
| Spacing Adjustment | 01-36 |
| Vertical Alignment | 01-36 |
| Depth Adjustment | 01-36 |
| Swivel Adjustment | 01-37 |
| Spring Tension Adjustment | 01-37 |
| Application Rate (non-CE) | 01-38 |
| Application Rate | 01-38 |
| Checking Application Rate | 01-39 |
| Insecticide Rate Chart - Clay Granules | 01-40 |
| Insecticide Rate Chart - Sand Granules | 01-41 |
| Herbicide Rate Chart | 01-42 |
| Application Rate (CE) | 01-43 |
| Application Rate | 01-43 |
| Checking Application Rate | 01-43 |
| Insecticide Rate | 01-44 |
| Approximate rate in kg/hectare @ 8 mph with 18 cm or 36 cm spreaders | 01-44 |
| Insecticide Rate Chart - Sand Granules | 01-45 |
| Approximate rate in kg/hectare @ 8 mph with 18 cm or 36 cm spreaders | 01-45 |
| Herbicide Rate Chart | 01-46 |
| Approximate rate in kg/hectare @ 8 mph with 18 cm or 36 cm spreaders | 01-46 |
| ISOBUS Planter Controller | 01-47 |
| ISOBUS Planter Controller | 01-47 |
| Component Service | 01-47 |

Contents

| | |
|--|-------|
| Implement Switch | 01-47 |
| Implement Switch Procedure | 01-47 |
| Priming the Hydraulic Circuits | 01-48 |
| Frame Control Box | 01-48 |
| Radar Device | 01-48 |
| Radar Sensor | 01-49 |
| Test Button | 01-50 |
| Test Switch Storage Tube | 01-50 |
| Torque Values For Standard Bolts | 01-52 |
| Special Torque Values | 01-52 |
| Torque Values For Metric Bolts | 01-53 |
| | |
| INSTALLATION INSTRUCTIONS | |
| Installation Instructions | 01-55 |
| | |
| INDEX | 01-57 |

GENERAL INFORMATION

GENERAL INFORMATION



FIG. 1

FIG. 1: Model 8824 Forward Fold Planter with Central Fill System.

8800 Series Forward Fold Planters are designed, built and tested to make sure high quality, maximum strength and long service life. All the models feature positive air metering and hydraulic, or contact tire mechanical seed drive for accurate seed spacing.

The Central Fill System planter is designed for planting corn, soybeans, milo, popcorn, and oil crop sunflowers.

| | |
|-----------|-------------------------------------|
| 8816-30 | 16 Row 30 inch Forward Fold Planter |
| 8824-30 | 24 Row 30 inch Forward Fold Planter |
| 8824-70cm | 24 Row 70 cm Forward Fold Planter |



WARNING: Pictures in this manual can show protective shields and guards opened or removed for illustration purposes. **BE SURE ALL SHIELDS AND GUARDS ARE IN PLACE DURING OPERATION.**

This manual was prepared from the latest information available at publication time. The company reserves the right to make changes at any time without notice or obligation.

General Information

SERIAL NUMBER PLATE LOCATION

FIG. 2: The serial number plate (1) is found on the top of the left end of the left-hand wing frame.

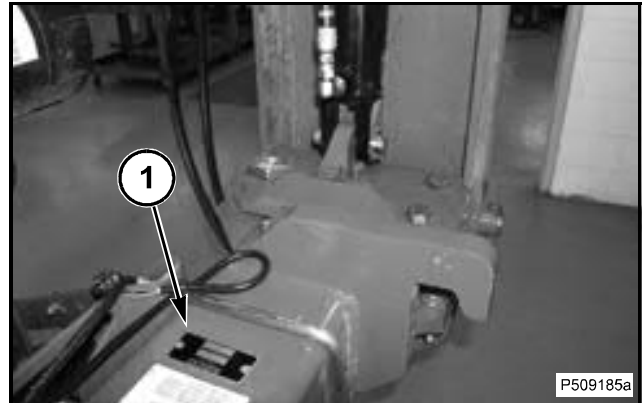


FIG. 2

SAFETY

SAFETY ALERT SYMBOL

FIG. 3: The safety alert symbol means ATTENTION! BECOME ALERT! YOUR SAFETY IS INVOLVED!


Look for the safety alert symbol both in this manual and on safety signs on this machine. The safety alert symbol will direct your attention to information that involves your safety and the safety of others.



FIG. 3

SAFETY MESSAGES

FIG. 4: The words DANGER, WARNING or CAUTION are used with the safety alert symbol. Learn to recognize these safety alerts and follow the recommended precautions and safety practices.

 **DANGER:** Indicates an imminently hazardous situation that, if not avoided, will result in DEATH OR VERY SERIOUS INJURY.

 **WARNING:** Indicates a potentially hazardous situation that, if not avoided, could result in DEATH OR SERIOUS INJURY.

 **CAUTION:** Indicates a potentially hazardous situation that, if not avoided, may result in MINOR INJURY.



FIG. 4

Safety

INFORMATIONAL MESSAGES

The words IMPORTANT and NOTE are not related to personal safety, but are used to give additional information and tips for operating or servicing this equipment.

IMPORTANT: Identifies special instructions or procedures which, if not strictly observed, could result in damage to or destruction of the machine, process, or its surroundings.

NOTE: Identifies points of particular interest for more efficient and convenient repair or operation.

SAFETY SIGNS



WARNING: DO NOT remove or obscure safety signs. Replace any safety signs that are not readable or are missing. Replacement signs are available from your dealer in the event of loss or damage. The actual location of the safety signs is illustrated at the end of this section.

If a used machine has been purchased, make sure all safety signs are in the correct location and can be read.

Replace any safety signs that can not be read or are missing. Replacement safety signs are available from your dealer.

GENERAL OPERATION AND SERVICE

Operating

- Read and understand all the operating and safety precautions before operating the machinery.
- In addition to the equipment configuration and design, hazard control and accident prevention depend on awareness, concern, prudence and proper training of the personnel in the operation, maintenance, transport and storage of the equipment.
- Always raise the implement, shut off the tractor engine, set the brakes, shift to park position (or neutral) and install the cylinder lockup channels before working around the machine.
- Avoid working under the planter. However, if it becomes unavoidable to do so, make sure the planter is securely blocked and the cylinder lockup channels are in place.
- Do not attempt to lubricate or adjust the planter while the machine is in operation.
- The machinery operation must be performed only by persons who are responsible and delegated to do so.
- Only the operator must be permitted on the tractor (unless tractor has a factory-installed instructor seat) when the tractor and the planter are moving. Never permit anyone to ride on the planter.
- Avoid wearing loose-fitting clothing and jewelry. Always tie up long hair that can be caught in the moving parts.
- Wear personal protective equipment (PPE) such as, but not limited to, protection for eyes, lungs, ears, head, hands and feet when operating, servicing or repairing the equipment.
- Make sure all persons are clear before operating the tractor or machine.
- Do not leave the tractor or implement unattended with the engine running.
- Never attempt to operate the planter unless seated in the operator's seat on the tractor with the seat belt fastened.
- The tractor must be equipped with rollover protective structure (ROPS), and a seat belt. Use the seat belt during operation.
- Make sure the tractor is in good operating condition, and has adequate braking capabilities.
- Do not dismount from a moving tractor.
- Regulate the ground speed to field conditions, and maintain control at all times.
- When working around discs, be careful to not get cut on the sharp edges.
- Watch for overhead wires or other obstructions when raising markers, and when moving the planter with the marker(s) raised.
- Disconnect the planter. Store the planter where children do not normally play. Stabilize the planter by using suitable supports, and block the wheels.
- Always lower the planter when not in use and relieve pressure in the hoses and cylinders.
- Do not allow children to ride on, play on, or operate equipment. Always keep children away from the equipment operating, servicing, and storage areas.
- Do not stand between the tractor and planter to install the hitch pin when the tractor engine is running.

Safety

Agricultural Chemicals

- Ag chemicals can be very hazardous. Improper use of fertilizer, fungicides, herbicides, insecticides and pesticides can injure people, plants, animals, soil and other people's property.
- Always read and follow all manufacturers' instructions before opening any chemical container.
- Even if you think you know them, read and follow instructions each time you use a chemical.
- Use same precautions when adjusting, servicing, cleaning or storing the planter as used when installing chemicals into the hoppers or tanks.
- Inform anyone who comes in contact with chemicals of the potential hazards involved and the safety precautions required.
- Stand upwind and away from the smoke from a chemical fire.
- Store or dispose of all unused chemicals only in a manner as specified by the chemical manufacturer.

Transporting

- Do not transport planter in excess of 25 km/h (15 mph).
- Use a tractor with a minimum weight of at least 2/3 of the fully loaded planter.
- Use good judgment when transporting the planter on the highway. Maintain complete control of the machine at all times.
- Comply with the state and local laws governing highway safety and regulations when moving the machinery.
- Always make the necessary safety precautions prior to transporting the machine on public roads.
- Make sure SMV (Slow Moving Vehicle) emblem is clean and visible. SMV is not required in CE on the 8824-70cm.
- Use flashing warning lights except when prohibited by law.
- Watch for overhead wires or other obstructions when transporting the planter with markers raised.
- Make sure the markers are completely folded before transporting or parking the planter.
- Install the transport cylinder lockup devices before transporting the planter.
- For Drawbar Hitch Models: Always fasten the transport safety chain to the tractor drawbar and use the retainer on the hitch pin.

Servicing

- Always raise the implement, shut off the tractor engine, and install cylinder lockup channels before working around the machine.
- After repairing or adjusting the planter, remove all of the tools and parts from the machine before operating the planter.
- Tire changing can be very hazardous and must be done by trained personnel using the proper tools and equipment.
- Do not inflate the tire that was seriously under-inflated or run flat. Have it checked by qualified personnel.
- Lower the planter to the ground before attempting to remove a wheel for tire repair.

FIG. 5: Fluid Leak Detection

- Correct the hydraulic leaks immediately. All the fittings must be tight and all the lines and hoses in good condition. Escaping hydraulic fluid, under extremely high pressure, can penetrate the skin and cause blood poisoning. Use a piece of wood or cardboard to detect fluid leaks. If injured by escaping fluid, see a doctor immediately.

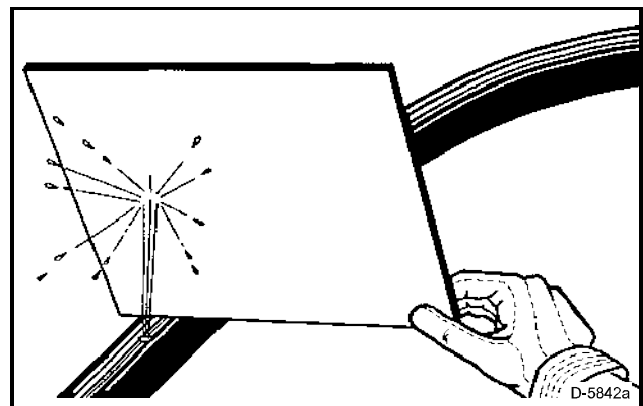


FIG. 5

NOTES

SPECIFICATIONS

8816-30 IN / 8824-30 IN

Frame

| | |
|---------------------------------|---|
| Main Frame (Toolbar) Size | 17.5 x 17.5 cm (7 x 7 in) |
| Flexibility..... | +/- 21 degrees each wing |
| Fold Cylinders | Two 5 x 20 inch double acting |
| Wheel Lift Cylinders..... | Eight cylinders - 16 Row Eight cylinders (24 Row Standard, two additional, optional) |
| Master Cylinder..... | Three 4-1/2 x 12 inches |
| Slave Cylinder | Three 4 x 12 inches |
| Lift Assist Cylinder | Two 2-1/2 x 12 inches additional, (two additional, optional on 8824) |
| Shaft and Disc Bearings..... | Sealed and lubricated |

Tires and Wheels

| | |
|---|---|
| Tires | 8816-eight, 8824-eight or ten optional, 255/70R-22.5 |
| Tire Pressure (maximum)..... | 482 to 689 kPa (70 to 100 psi) Do not exceed maximum indicated on sidewall |
| Wheel Bearings | Tapered roller |
| Fertilizer Pump Drive Wheel (if equipped) | |
| Size..... | 16 x 6.50, 4 ply |
| Pressure..... | 193 kPa (28 psi) |

8816

| | |
|------------------------|---|
| Rows | 16 |
| Row Spacing..... | 76 cm (30 in) |
| Transport Width..... | 3.6 m (11 ft 11 in) |
| Transport Length..... | 10.4 m (34 ft) |
| Transport Height | 3.8 m (12 ft 6 in) |
| Operating Length..... | 6.59 m (22 ft 6 in) |
| Operating Width | 13.25 m (43.5 ft) |
| Transport Wheels..... | Four transport wheels, four wing wheels |

8824

| | |
|------------------------|---|
| Rows | 24 |
| Row Spacing..... | 76 cm (30 in) |
| Transport Width..... | 3.6 m (11 ft 11 in) |
| Transport Length..... | 14.1 m (46 ft 4 in) |
| Transport Height | 3.8 m (12 ft 6 in) |
| Operating Length..... | 7.0 m (23 ft) |
| Operating Width | 19.8 m (65 ft) |
| Transport Wheels..... | Four transport wheels, four (two additional, optional) wing wheels |

Specifications

Markers (Optional)

| | |
|-------------------|-------------------------------------|
| Type..... | Automatic sequencing, tri-fold arms |
| Disc Size | 40.6 cm (16 in) diameter |
| Disc Type..... | Notched |
| Cylinder Sizes: | |
| 16R-30 inch | 64 x 610 mm (3 x 20 in) |
| 24R-30 inch..... | 89 x 711 mm (3 x 28 in) |

Row Units

| | |
|--|---|
| CFS Seed Hoppers | Two 1585.8 liters (45 bu) central fill hoppers |
| Seed Hoppers..... | 70.5 liters or 105.7 liters (2 bu or 3 bu) hoppers |
| Seed Discs..... | Corn, soybean, sunflower, sugar beet, cotton, sorghum, milo, maize, navy bean, large edible bean, snap bean, peanut |
| Seed Drive System..... | Electronic controlled hydraulics |
| Seed Disc-to-Metering Unit Clearance | 0.254 to 1.27 mm (0.010 to 0.050 in) |
| Herbicide/Insecticide Hoppers | 70 lb per row |
| Metering Unit Drives..... | Sprocket, chain and shaft with hydraulic motor |
| Gauge Wheel Tire Size | 11.4 x 40.6 cm (4.5 x 16 in) |
| Single Closing Wheel Tire Size..... | 10.3 x 30.1 cm (4 x 12 in) |
| Dual Closing Wheel Tire Size | 30.8 cm dia (12 in dia) |
| Single Closing Wheel Down Pressure..... | 4.5 to 50.0 kg (10 to 130 lb) |
| Dual Closing Wheel Down Pressure..... | 6.8 to 107 kg (50 to 230 lb) |

Air System

| | |
|------------------------------------|---------------------------|
| Seed Meter Blowers | Two |
| Max. Blower Speed | 2600 rpm @ rated PTO rpm |
| Operating Air Pressure (Min)..... | 12.7 mm (0.5 in) of water |
| Operating Air Pressure (Max) | 102 mm (4 in) of water |

Hydraulic System

| | |
|---|--|
| Tractor Remote Valve Requirements | Three |
| Frame Lift - Fold System Capacity | Approx. 42 liters (11 gal) |
| PTO Pump Circuit | |
| Return Line Filter | 10 micron, spin-on cartridge-type |
| Suction Screen | 100 mesh |
| Reservoir Capacity | 28.8 liters (7.6 gal) |
| Fluid Cooler..... | Standard Equipment |
| Blower Motor | |
| Fluid Requirement (Max)..... | 3.8 to 11.3 Lpm (1 to 3 gpm) |
| Operating Pressure (Min)..... | 3445 kPa (500 psi) @ rated PTO rpm |
| Operating Pressure (Max)..... | 17 238 kPa (2500 psi*) @ rated PTO rpm |

* Maintained by relief valve in planter proportional flow divider valve block.

Shear Pins

| | |
|---|----------------------------|
| Metering Unit Shaft..... | 3/16 x 1-1/2 inch roll pin |
| Main Drive Shaft Sprockets..... | 1/4 x 1 inch bolt, Grade 2 |
| Herbicide/Insecticide Meter Shaft | 5/32 x 1-1/4 inch roll pin |

Electronic Seed Drive Controller

ISOBUS Planter Controller

| | |
|-----------------------------|---|
| Voltage | 12 VDC, w/ nonvolatile memory |
| Monitoring Capability | Row population, high/low population limits, areas (3), distance counter, seed spacing, seed count, acres/hour, ground speed |
| Program Capability | Seed Population, seed spacing |

Fuse

| | |
|---------------------|--------------------|
| Control Box | 30 amp |
| SM400 Monitor | 7.5 amp, brown ATO |

Approximate Shipping Weights

| | |
|--------------|---------------------|
| 8816-30..... | 6924 kg (15,265 lb) |
| 8824-30..... | 8494 kg (18,725 lb) |

Specifications

8824-70CM

Frame

| | |
|---------------------------------|---|
| Main Frame (Toolbar) Size | 17.5 x 17.5 cm (7 x 7 in) |
| Flexibility..... | +/- 21 degrees each wing |
| Fold Cylinders | Two 5 x 20 inch double acting |
| Wheel Lift Cylinders..... | Ten cylinders (24 Row Standard, two additional, optional) |
| Master Cylinder..... | Three 4-1/2 x 12 inches |
| Slave Cylinder..... | Three 4 x 12 inches |
| Lift Assist Cylinder | Four 2-1/2 x 12 inches (two additional, optional) |
| Shaft and Disc Bearings..... | Sealed and lubricated |

Tires and Wheels

| | |
|------------------------------|---|
| Tires | 8824-ten, 255/70R-22.5 |
| Tire Pressure (maximum)..... | 482 to 689 kPa (70 to 100 psi) Do not exceed maximum indicated on sidewall |
| Wheel Bearings | Tapered roller |

8824-70cm

| | |
|------------------------|--|
| Rows | 24 |
| Row Spacing..... | 70 cm (27.5 in) |
| Transport Width..... | 3.6 m (11 ft 11 in) |
| Transport Length..... | 1371.6 cm (45 ft) |
| Transport Height | 297.2 cm (24 ft 8 in) |
| Operating Length..... | 7.0 m (23 ft) |
| Operating Width | 19.8 m (65 ft) |
| Transport Wheels..... | Four transport wheels Six wing wheels |

Markers

| | |
|-----------------|-------------------------------------|
| Type..... | Automatic sequencing, tri-fold arms |
| Disc Size | 40.6 cm (16 in) diameter |
| Disc Type..... | Notched |
| Cylinder Sizes: | |
| 24R-70 cm | 89 x 711 mm (3 x 28 in) |

Specifications

Row Units

| | |
|---|---|
| Seed Hoppers..... | 70 Liter or 105 Liter hoppers |
| Seed Discs..... | Corn, soybean, sunflower, sugar beet, maize |
| Seed Drive System..... | Ground drive |
| Seed Disc-to-Metering Unit Clearance..... | 0.254 to 1.27 mm (0.010 to 0.050 in) |
| Herbicide/Insecticide Hoppers..... | 70 lb per row |
| Metering Unit Drives..... | Sprocket, chain and shaft from planter drive wheels |
| Gauge Wheel Tire Size..... | 11.4 x 40.6 cm (4.5 x 16 in) |
| Single Closing Wheel Tire Size..... | 10.3 x 30.1 cm (4 x 12 in) |
| Dual Closing Wheel Tire Size..... | 30.8 cm dia (12 in dia) |
| Single Closing Wheel Down Pressure..... | 4.5 to 50.0 kg (10 to 130 lb) |
| Dual Closing Wheel Down Pressure..... | 6.8 to 107 kg (50 to 230 lb) |

Air System

| | |
|-----------------------------------|---------------------------|
| Seed Meter Blowers..... | Two |
| Max. Blower Speed..... | 2600 rpm @ rated PTO rpm |
| Operating Air Pressure (Min)..... | 12.7 mm (0.5 in) of water |
| Operating Air Pressure (Max)..... | 102 mm (4 in) of water |

Hydraulic System

| | |
|--|------------------------------|
| Tractor Remote Valve Requirements..... | Three |
| Frame Lift - Fold System Capacity..... | Approx. 42 liters (11 gal) |
| Blower Motor | |
| Fluid Requirement (Max)..... | 3.8 to 11.3 Lpm (1 to 3 gpm) |
| Operating Pressure (Min)..... | 3445 kPa (500 psi) |
| Operating Pressure (Max)..... | 17 238 kPa (2500 psi*) |

* Maintained by relief valve in planter flow divider valve block.

Shear Pins

| | |
|--|--------------------------------|
| Metering Unit Shaft..... | 3/16 x 1-1/2 inch roll pin |
| Herbicide/Insecticide Meter Shaft..... | 5/32 x 1-1/4 inch roll pin |
| Main Drive Shaft Sprockets..... | 1/4 20T x 1 inch bolt, Grade 2 |

Monitor

| | |
|----------------------------|---|
| SM400..... | Standard Equipment |
| Voltage..... | 12 VDC |
| Fuse..... | 7.5 amp, brown ATO |
| Monitoring Capability..... | Row population, high/low population limits, areas (3), distance counter, seed spacing, seed count, acres/hour, ground speed |

Specifications

Fuse

Control Box 30 amp
SM400 Monitor 7.5 amp, brown ATO

Approximate Shipping Weights

8824-70cm 10 659 kg (23 500 lb)

FIELD OPERATIONS AND ADJUSTMENTS

TRACTOR PREPARATION

Recommended Tractor Horsepower

| Planter Model | Minimum PTO HP Required | Planter Weight (dry) | Total Planter Weight | Desired Tractor Weight (lbs) |
|----------------|-------------------------|----------------------|----------------------|------------------------------|
| 8816 - 30 inch | 150 | 18,000 | 23,400 | 15,600 |
| 8824 - 30 inch | 200 | 27,500 | 32,900 | 21,933 |
| 8824 - 70 cm | 200 | 27,500 | 32,900 | 21,933 |

Recommended Tractor Horsepower With Fertilizer Openers

| Planter Model | Minimum PTO HP Required | Planter Weight (dry) | Total Planter Weight | Desired Tractor Weight (lbs) |
|----------------|-------------------------|----------------------|----------------------|------------------------------|
| 8816 - 30 inch | 170 | 18,000 | 30,000 | 20,000 |
| 8824 - 30 inch | 240 | 27,500 | 40,000 | 26,700 |
| 8824- 70 cm | 240 | 27,500 | 40,000 | 26,700 |

Wheel Tread Spacing

IMPORTANT: Dual rear wheels are recommended for tractor stability and for load-carrying capacity when the planter is folded.

The ideal wheel tread spacing dimensions are listed below.

NOTE: Some outer wheels cannot be adjusted to these dimensions.

16-Row, 30 inch Model

Set inner wheel tread to 153 cm (60 in).

Set outer wheel tread to 305 cm (120 in).

24-Row, 30 inch Model

Set inner wheel tread to 153 cm (60 in).

Set outer wheel tread to 305 cm (120 in).

24-Row, 70 cm Model

Set inner wheel tread to 153 cm (60 in).

Set outer wheel tread to 305 cm (120 in).

NOTE: Set all the wheels equally from the tractor centerline.

When operating on hillsides or steep slopes, set the wheels as wide as possible for maximum stability and steering control. If the front axle is adjustable, set the wheels at the outside edge of the inner rear wheels.

Thank you so much for reading.
Please click the “Buy Now!”
button below to download the
complete manual.



After you pay.

You can download the most
perfect and complete manual in
the world immediately.

Our support email:

ebooklibonline@outlook.com