

Massey Ferguson®

8792 / 8776
Planter

SERVICE MANUAL 4283409M2

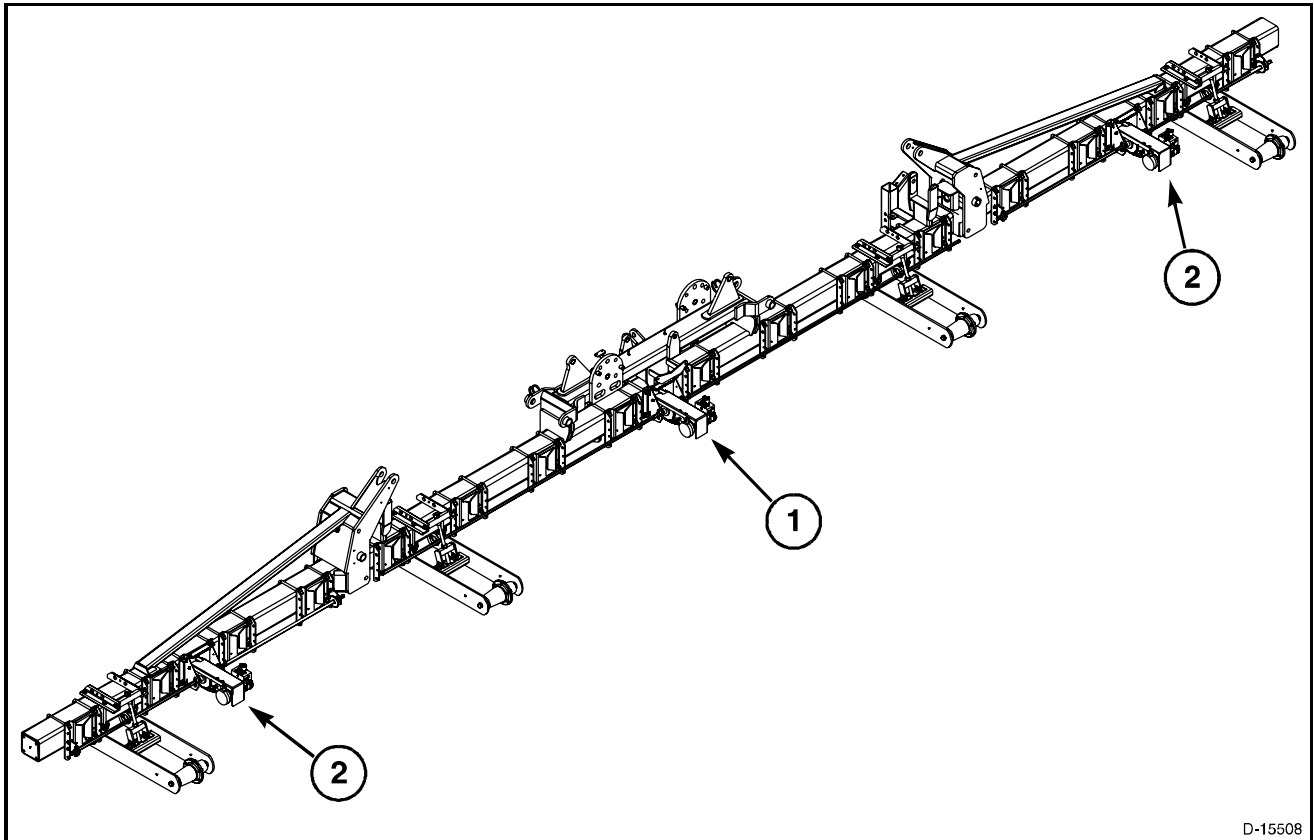
CONTENTS

GENERAL INFORMATION	01
ROW UNIT	02
DRIVE TRANSMISSION.....	03
AIR SYSTEM	04
HYDRAULICS	05
ELECTRICAL	06
FRAME	07
TROUBLESHOOTING	08
CONSOLES AND MONITORS.....	09

HYDRAULIC DRIVE

GENERAL INFORMATION

Operation



D-15508

FIG. 6

FIG. 6: The hydraulic drive group turns the drive shaft. There are three drive groups located in the rear of the planter. One drive group (1) is in the center of the planter and the other two drive groups (2) are located on each wing.

Hydraulic Drive

ROLLER CHAIN

Removal

FIG. 7: Lift up on the idler pulley (1) to reduce chain tension and remove the 74 link roller chain (2).

The roller chain has a spring clip connector to easily separate the roller chain.

Inspect roller chain. Replace roller chain as required.

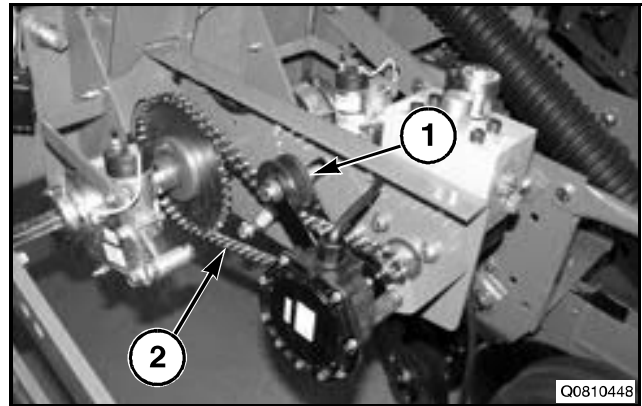


FIG. 7

Installation

Place the roller chain on sprockets.

Lift up idler pulley and install the roller chain. Attach the chain ends at the clip connector.

Release the idler pulley to increase the roller chain tension.

16 TOOTH SPROCKET

FIG. 8: 16 Tooth Sprocket (1)

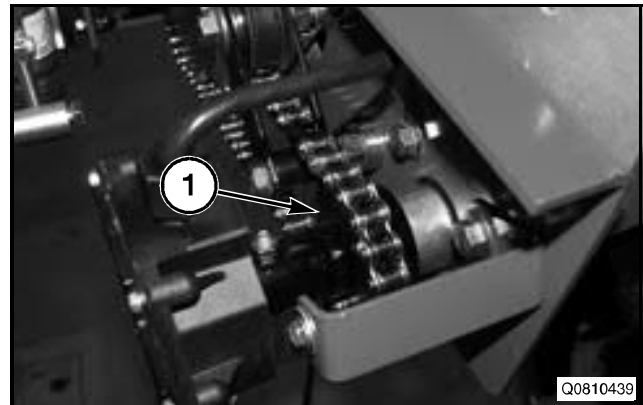
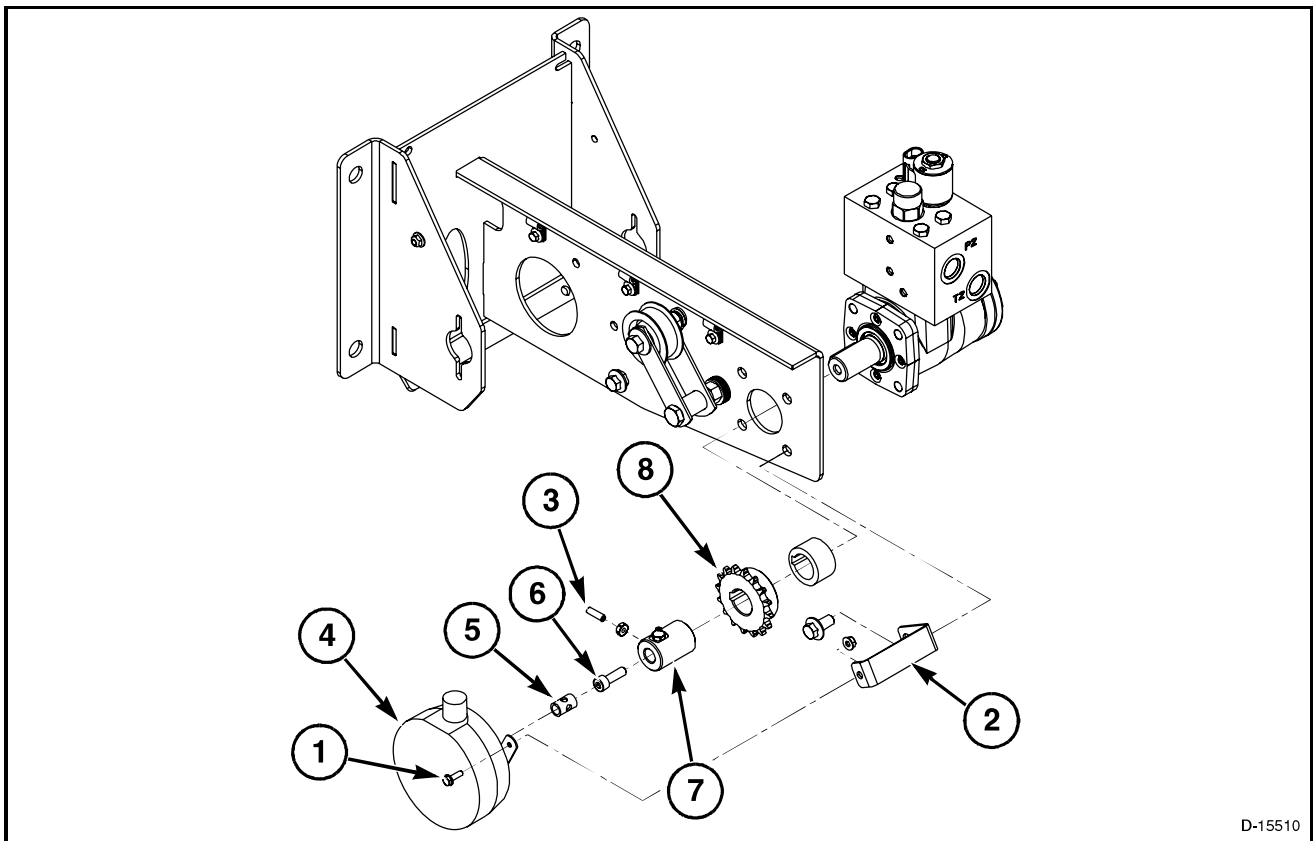


FIG. 8

Removal



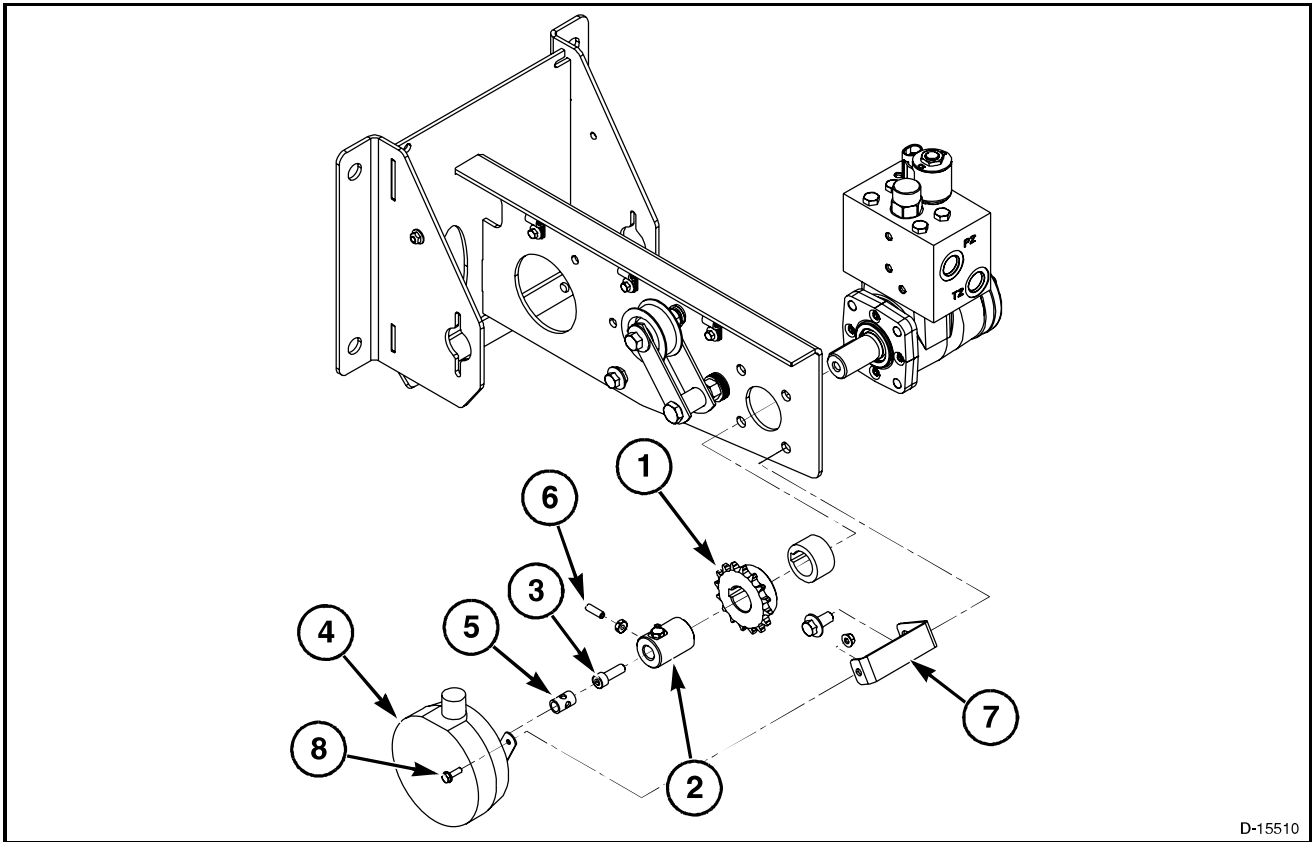
D-15510

FIG. 9

- FIG. 9:** Remove nut and bolt (1) from strap (2).
 Loosen the two set screws (3).
 Slide speed sensor (4) and RPM sensor sleeve (5) off.
 Remove hex-head screw (6) from motor shaft.
 Slide sleeve off (7).
 Slide sprocket (8) off motor shaft.
 Clean or replace sprocket as needed.

Hydraulic Drive

Installation



D-15510

FIG. 10

FIG. 10: Slide sprocket (1) onto shaft.

Reduce pulley tension and install chain on sprocket.

Install sleeve (2).

Install socket hex-head screw (3) to motor shaft.

Install speed sensor (4) and RPM sensor sleeve (5).

Tighten set screws (6) on sleeve.

Attach speed sensor to strap (7) with nut and bolt (8).

IDLER PULLEY ASSEMBLY

FIG. 11: Idler Pulley Assembly (1)

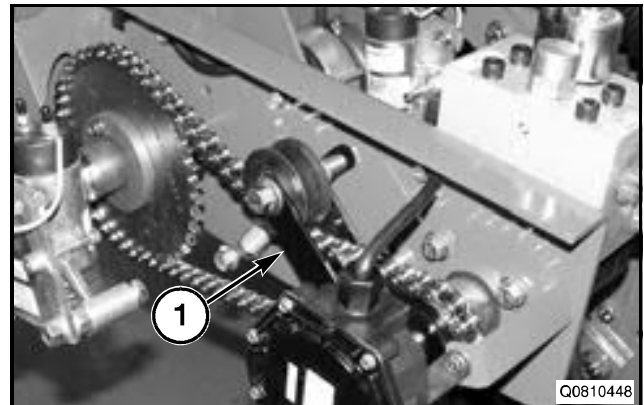


FIG. 11

Removal

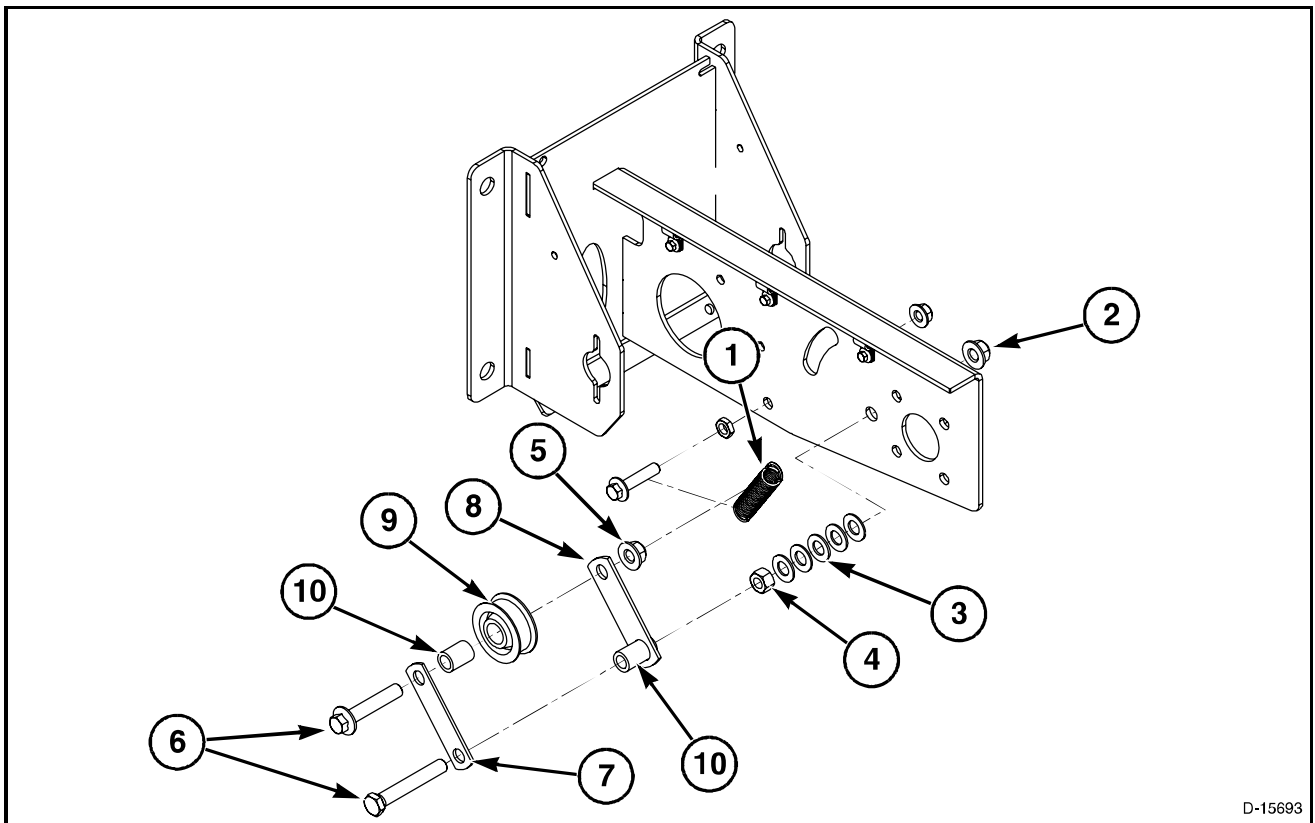


FIG. 12

FIG. 12: Remove roller chain.

Remove the extension spring (1). Remove lock nut (2), and remove the idler pulley assembly and washers (3).

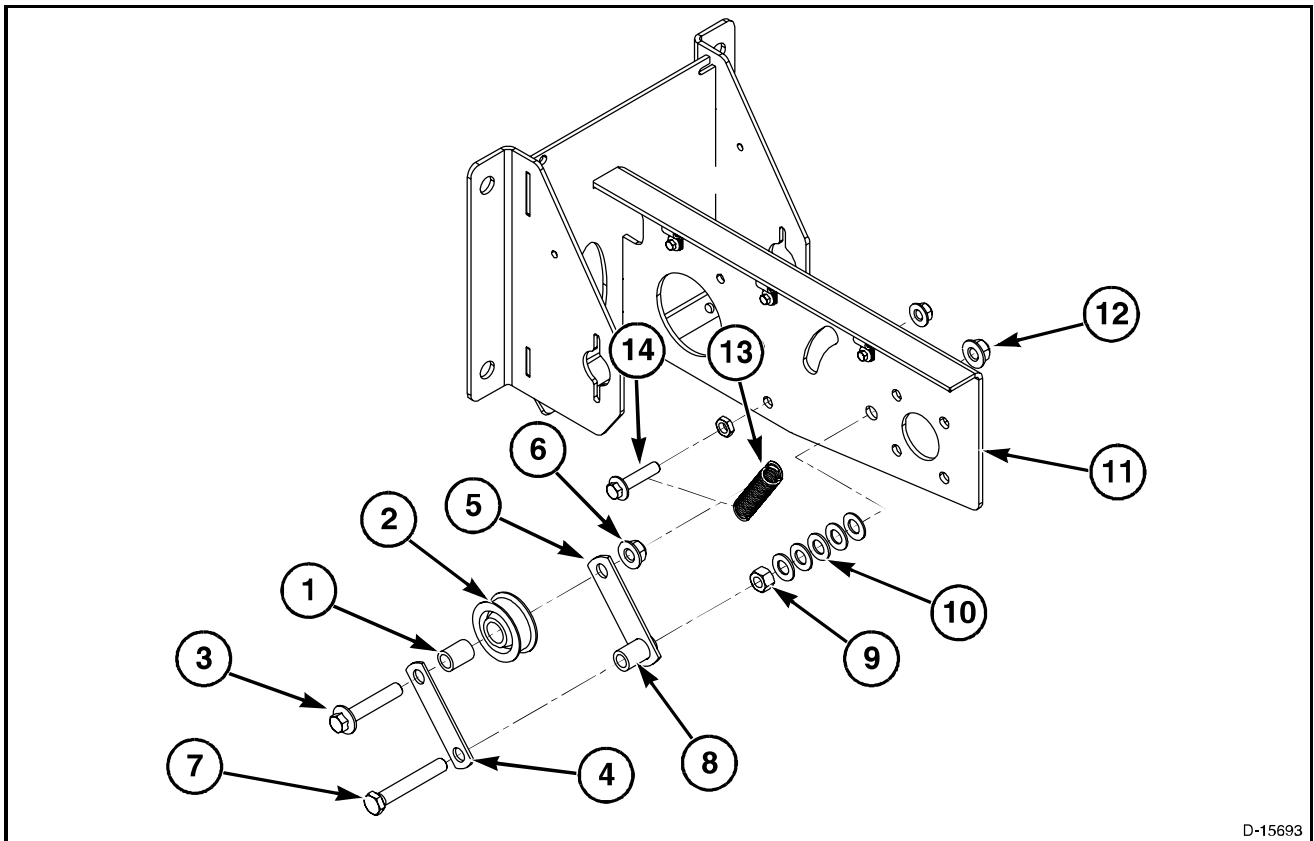
Remove the two nuts (4,5) and cap screws (6). Separate tightener strap (7) from chain tightener (8). Remove idler pulley (9) and spacers (10).

Set spacers aside with rest of hardware when removing the idler pulley assembly.

Replace idler pulley if needed.

Hydraulic Drive

Installation



D-15693

FIG. 13

FIG. 13: Grease idler pulley.

Insert spacer (1) into idler pulley (2).

Insert cap screw (3) through tightener strap (4), idler pulley (2), chain tightener (5), and center lock nut (6).

Insert cap screw (7) through tightener strap (4), spacer (8), chain tightener (5), and nut (9).

Tighten the nuts (7,9). Do not over tighten, idler pulley needs to be able to move freely.

Place washers (10) onto cap screw (7) and insert the cap screw through the mounting plate (11), and install the center lock nut (12) and tighten.

Attach extension spring (13) to the cap screws (3,14).

Attach roller chain.

40 TOOTH SPROCKET

FIG. 14: 40 Tooth Sprocket (1)

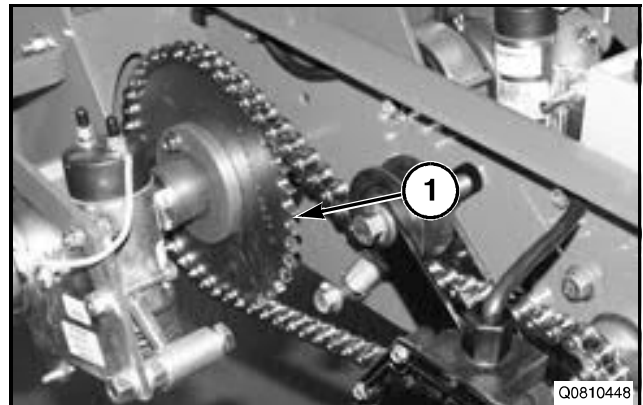


FIG. 14

Removal

FIG. 15: Pull out the cotter pin (1).

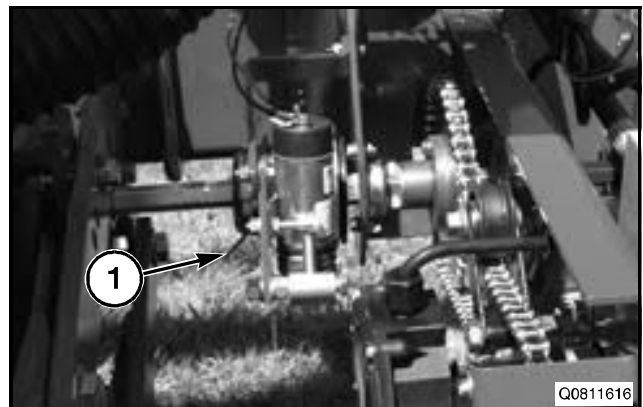


FIG. 15

FIG. 16: Remove the driver (1).

Slide the drive shaft (2) out enough to remove the point row clutch (3) and to slide the drive shaft (4) out.

Remove the strap (5), point row clutch (3) and sleeve (6).

Disconnect the other end of the drive shaft (4) from the point row clutch, in the same manner.

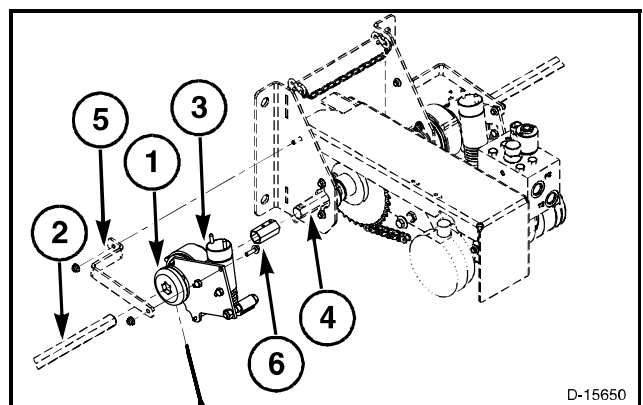


FIG. 16

D-15650

Hydraulic Drive

FIG. 17: If not equipped with point row clutches, remove the coupling (1).

Remove bolts (2) and nuts (3).

Remove coupling (1) and coupling adaptors (4).

Pull out drive shaft.

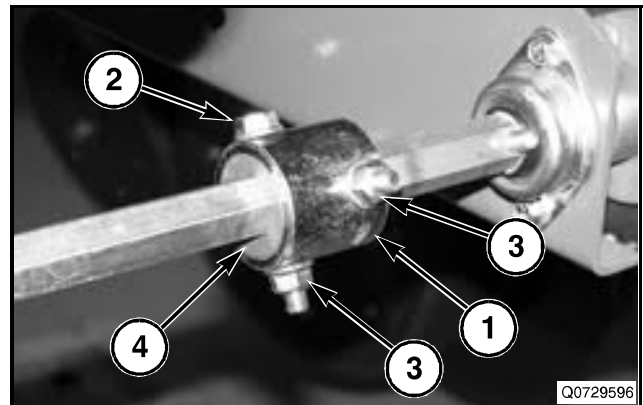


FIG. 17

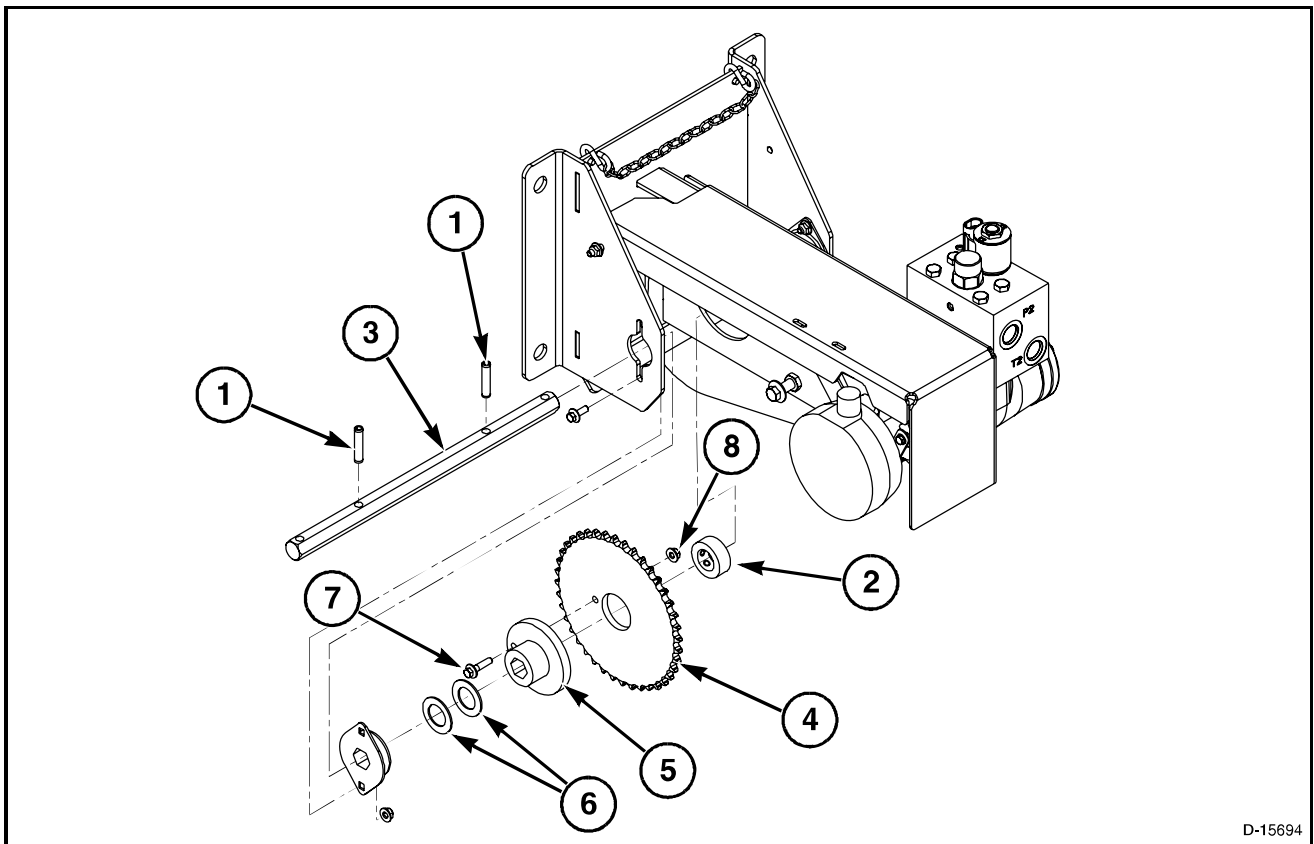


FIG. 18

FIG. 18: Remove slotted spring pins (1).

Loosen set screw in the lock collar (2).

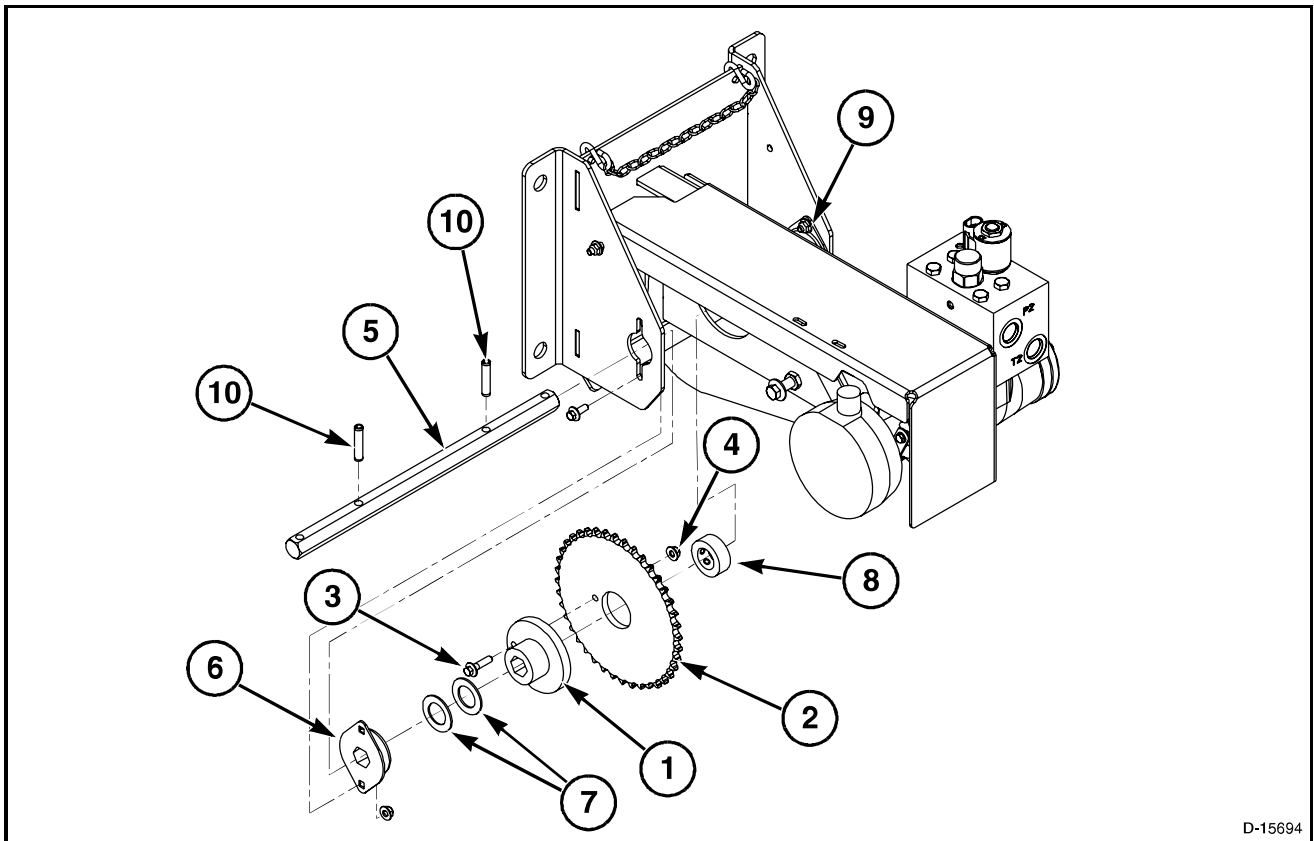
Slide the drive shaft (3) out and remove the 40 tooth socket (4) and drive hub (5) assembly.

Remove washers (6).

Remove the bolt (7) and nut (8) and separate the drive hub (5) and 40 tooth sprocket (4).

Clean or replace components as needed.

Installation



D-15694

FIG. 19

FIG. 19: Attach the drive hub (1) to the 40 tooth sprocket (2) by inserting the bolt (3) through the drive hub and 40 tooth sprocket and install nut (4).

Slide the drive shaft (5) through the bearing (6), washers (7), the 40 tooth sprocket (2) and drive hub (1) assembly.

Install lock collar (8).

Push drive shaft (5) through bearing (9).

Insert slotted spring pins (10).

Align the 40 tooth sprocket with the idler pulley

Put lock collar (8) into place and tighten set screws.

Install roller chain.

NOTE: Make sure that the drive shaft turns freely in the bearings.

Hydraulic Drive

FIG. 20: Slide sleeve (1) onto drive shaft (2).

Install the point row clutch (3) over the sleeve.

Place driver (4) onto drive shaft (5) and insert the drive shaft into the point row clutch.

Slide the driver (4) over the multi driver.

Align holes and insert the cotter pin (6).

Bolt the solenoid bracket to the strap (7).

NOTE: Make sure that the drive shaft turns freely in the point row clutch.

Install point row clutch on the other side of the hydraulic drive in the same manner.

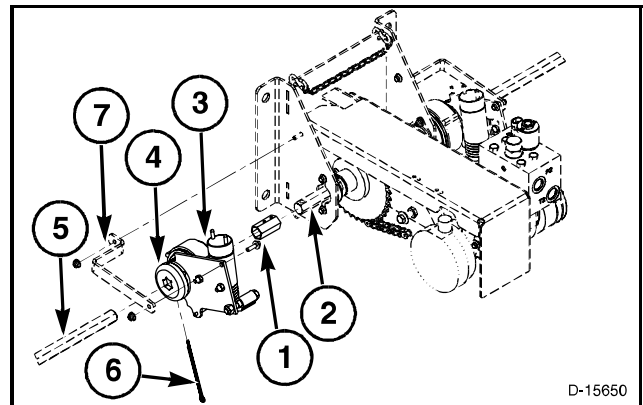
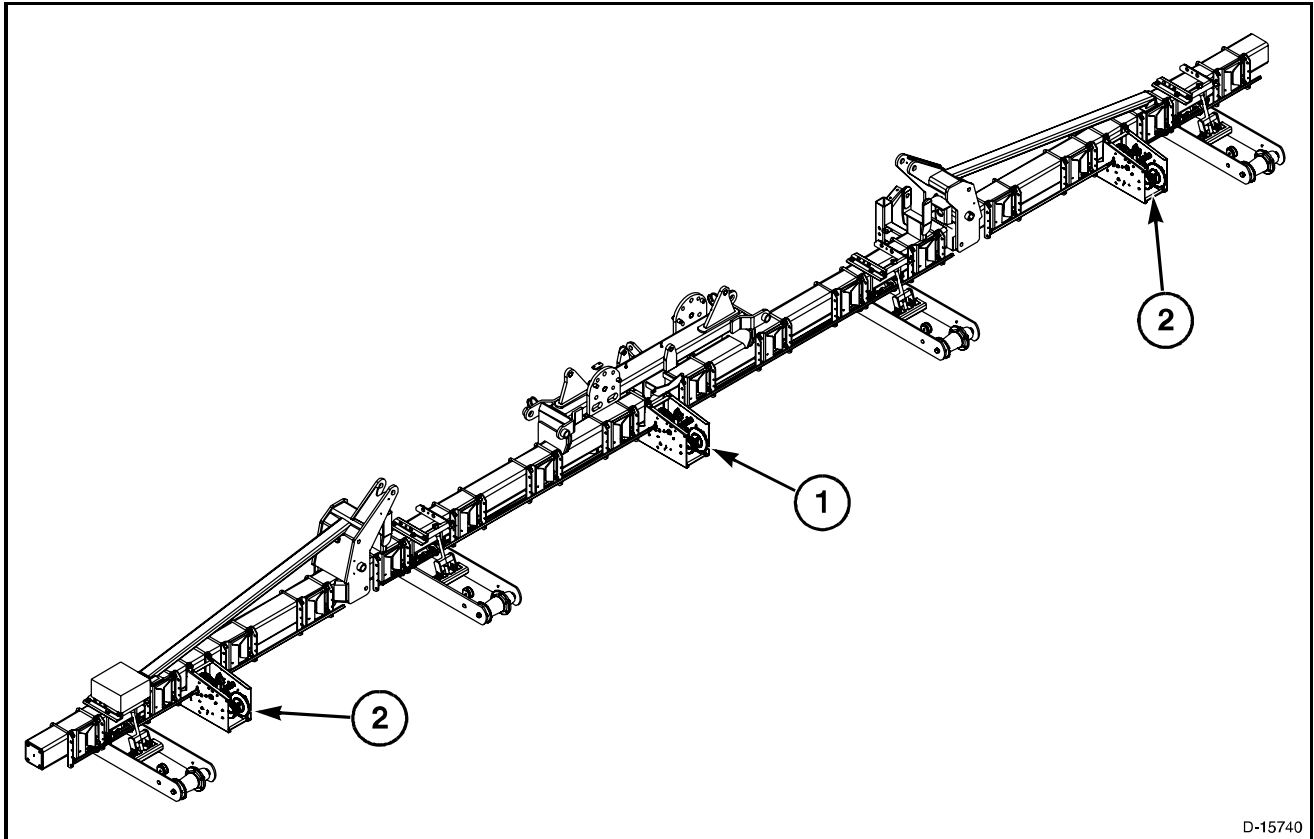


FIG. 20

D-15650

GROUND DRIVE

OPERATION



D-15740

FIG. 21

FIG. 21: The planter row units are operated by a ground drive system or a hydraulic drive system.

The ground drive group turns the drive shaft. There are three ground drive groups located in the rear of the planter. One ground drive group (1) is in the center of the planter and the other two ground drive groups (2) are located on each wing.

Ground Drive

ROLLER CHAINS

FIG. 22: There are two chains in the ground drive box.

The input shaft (1) turns the lower roller chain (122 links) (2), which turns the rear shaft (3).

The rear shaft (3) turns the upper roller chain (90 links) (4), which turns the output shaft (5).

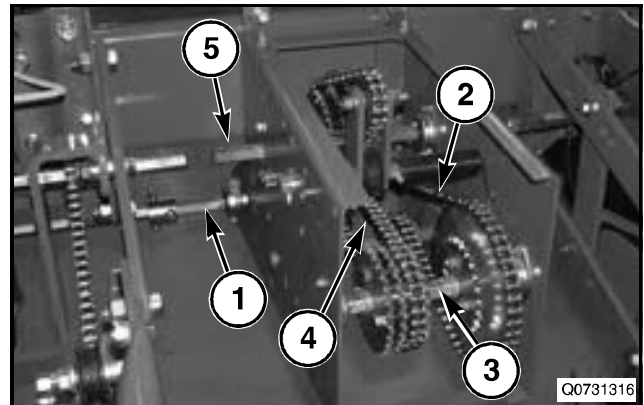


FIG. 22

Removal

FIG. 23: Push on the pulley idler (1) to reduce tension on the roller chain.

Remove roller chain from the sprockets and remove clip (2) to disconnect the roller chain.

Remove the roller chain from the ground drive assembly.

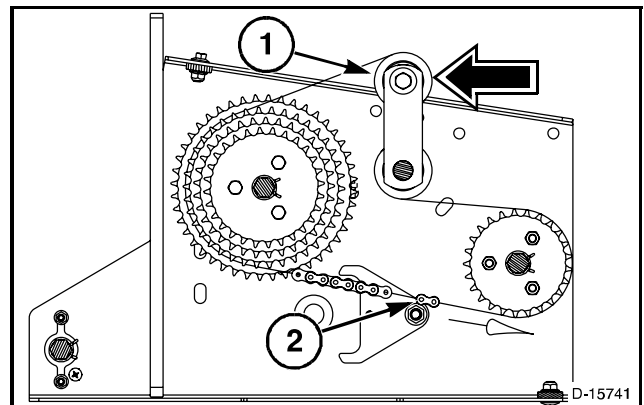


FIG. 23

FIG. 24: Push on the pulley idler (1) to reduce tension on the roller chain.

Remove roller chain from the sprockets and remove clip (2) to disconnect the roller chain.

Remove the roller chain from the ground drive assembly.

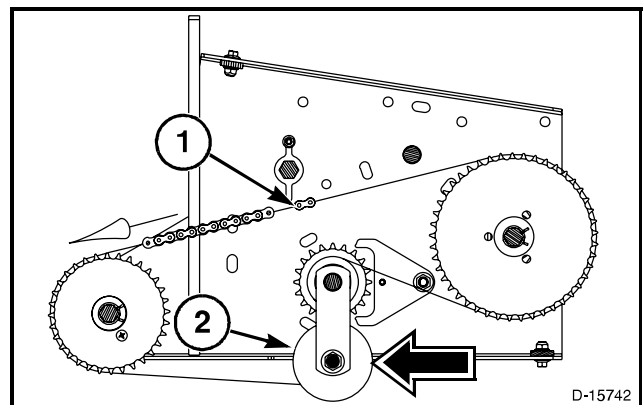


FIG. 24

Installation

Inspect roller chains. Replace chains as required.

To Install, place roller chain on sprockets. Connect the roller chain with the clip.

Push on pulley idler to allow the roller chain to go on the idler. Insert roller chain on idler and release idler to increase tension.

Make sure the chain is fitted on all the sprockets correctly.

OUTPUT SPROCKET ASSEMBLY

Operation

FIG. 25: The output sprocket assembly (1) consists of four sprockets.

The speed of the row unit drive shaft is determined by which sprocket is used.

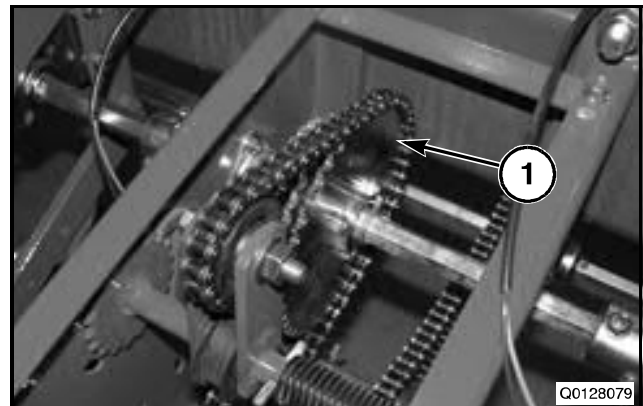


FIG. 25

Removal

FIG. 26: Remove roller chain.

Pull out the cotter pin (1).

Remove the driver (2).

Slide the drive shaft (3) out enough to remove the point row clutch (4) and to slide the drive shaft (5) out.

Remove the strap (6), point row clutch (4), and sleeve (7).

Disconnect the other end of the drive shaft (5) from the point row clutch, in the same manner.

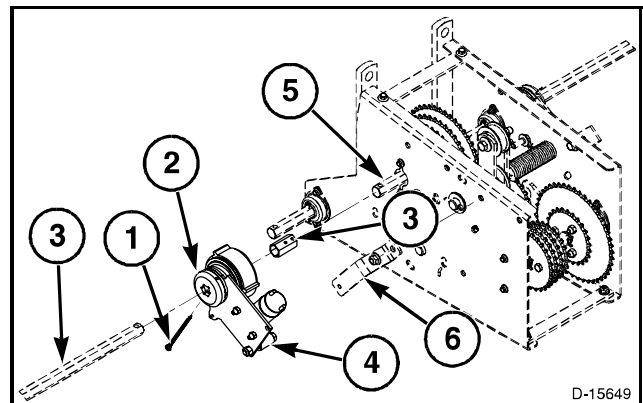


FIG. 26

FIG. 27: If not equipped with point row clutches, remove the coupling (1).

Remove bolts (2) and nuts (3).

Remove coupling (1) and coupling adaptors (4).

Pull out drive shaft.

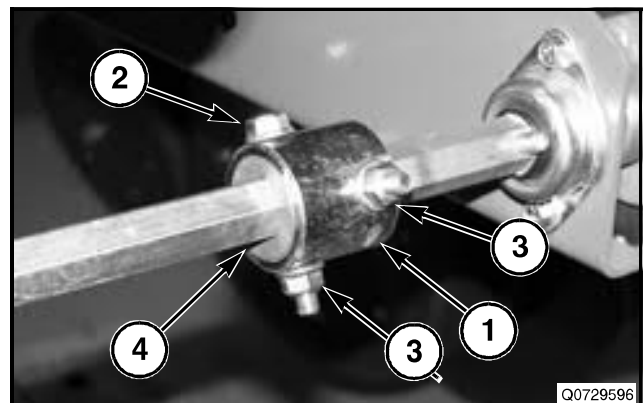


FIG. 27

Thank you so much for reading.
Please click the “Buy Now!”
button below to download the
complete manual.



After you pay.

You can download the most
perfect and complete manual in
the world immediately.

Our support email:

ebooklibonline@outlook.com