

Early Riser® I 245
Pivot-Transport Planter

SERVICE MANUAL

Part number 47541343

1st edition English

January 2015





SERVICE MANUAL

1245 Pivot-Transport

Contents

INTRODUCTION

Power Take-Off (PTO)	31
[31.226] Hydraulic pump drive	31.1
Hydraulic systems.....	35
[35.000] Hydraulic systems.....	35.1
[35.104] Fixed displacement pump	35.2
[35.359] Main control valve	35.3
[35.912] Hydraulic seeding fan system	35.4
[35.944] Frame positioning folding	35.5
[35.946] Frame positioning lifting	35.6
[35.947] Frame positioning swinging	35.7
[35.948] Frame positioning extending	35.8
[35.745] Vacuum system hydraulic circuit	35.9
[35.746] Marking system hydraulic circuit	35.10
[35.747] Liquid fertilizer system hydraulic circuit	35.11
[35.748] Metering system hydraulic circuit	35.12
Pneumatic system	36
[36.100] Pneumatic system.....	36.1
[36.200] Pneumatic operated components	36.2
Frames and ballasting	39
[39.100] Frame	39.1
Wheels	44
[44.530] Carrying and transport wheels	44.1
Electrical systems.....	55
[55.100] Harnesses and connectors.....	55.1
[55.516] Seeding control system	55.2

[55.785] Precision farming system	55.3
[55.404] External lighting	55.4
[55.DTC] FAULT CODES	55.5
Metering system	61
[61.904] Product metering	61.1
Chemical applicators	63
[63.100] Liquid fertilizer system	63.1
[63.110] Granular chemical system.....	63.2
Planting	79
[79.100] Product handling and delivery drive system	79.1
[79.103] Planting vacuum system	79.2
[79.104] Planting marking system	79.3
[79.105] Planting tool	79.4
[79.904] Air distribution system.....	79.5



INTRODUCTION

Contents

INTRODUCTION

Foreword	3
Foreword - Important notice regarding equipment servicing	4
Safety rules	5
Personal safety	6
Hand signals	13
Safety rules - Ecology and the environment	14
Safety signs	15
Basic instructions – Measuring voltages	29
Basic instructions - Electrical testing	31
Torque - Hydraulic tubes and fittings	42
Torque – Fasteners	43
Special tools Manual Toolbar Controller (MTC)	45
Basic instructions - Shop and assembly	46
Abbreviation	48
General specification	50
Hydraulic contamination	56
Product identification	57
Product identification Machine orientation	58

Foreword

Technical information

This information in this manual has been structured using a unique coding environment. This is the way in which technical information is created, stored, and retrieved in the Technical Information Database. The coding has aligned locations with the warranty system.

All hydraulic information is now in Section 35. All Electrical / Electronic information is now in Section 55. Mechanical information is now in the section for that part or system.

Foreword - Important notice regarding equipment servicing

All repair and maintenance work listed in this manual must be carried out only by qualified dealership personnel, strictly complying with the instructions given, and using, whenever possible, the special tools.

Anyone who performs repair and maintenance operations without complying with the procedures provided herein shall be responsible for any subsequent damages.

The manufacturer and all the organizations of its distribution chain, including - without limitation - national, regional, or local dealers, reject any responsibility for damages caused by parts and/or components not approved by the manufacturer, including those used for the servicing or repair of the product manufactured or marketed by the manufacturer. In any case, no warranty is given or attributed on the product manufactured or marketed by the manufacturer in case of damages caused by parts and/or components not approved by the manufacturer.

The manufacturer reserves the right to make improvements in design and changes in specifications at any time without notice and without incurring any obligation to install them on units previously sold. Specifications, descriptions, and illustrative material herein are as accurate as known at time of publication but are subject to change without notice.

In case of questions, refer to your CASE IH Sales and Service Networks.

Safety rules


Personal safety





This is the safety alert symbol. It is used to alert you to potential personal injury hazards. Obey all safety messages that follow this symbol to avoid possible death or injury.

Throughout this manual you will find the signal words DANGER, WARNING, and CAUTION followed by special instructions. These precautions are intended for the personal safety of you and those working with you.

Read and understand all the safety messages in this manual before you operate or service the machine.

 DANGER indicates a hazardous situation that, if not avoided, will result in death or serious injury.

 WARNING indicates a hazardous situation that, if not avoided, could result in death or serious injury.

 CAUTION indicates a hazardous situation that, if not avoided, could result in minor or moderate injury.

FAILURE TO FOLLOW DANGER, WARNING, AND CAUTION MESSAGES COULD RESULT IN DEATH OR SERIOUS INJURY.

Machine safety

NOTICE: Notice indicates a situation that, if not avoided, could result in machine or property damage.

Throughout this manual you will find the signal word Notice followed by special instructions to prevent machine or property damage. The word Notice is used to address practices not related to personal safety.

Information

NOTE: Note indicates additional information that clarifies steps, procedures, or other information in this manual.

Throughout this manual you will find the word Note followed by additional information about a step, procedure, or other information in the manual. The word Note is not intended to address personal safety or property damage.

Personal safety

WARNING

Unexpected machine movement!

Disengage power, shut down the tractor, and be sure that all moving parts have stopped before servicing, adjusting, cleaning, or unclogging the equipment.
Failure to comply could result in death or serious injury.

W0924A

WARNING

Escaping fluid!

Hydraulic fluid or diesel fuel leaking under pressure can penetrate the skin and cause infection or other injury. To prevent personal injury: Relieve all pressure before disconnecting fluid lines or performing work on the hydraulic system. Before applying pressure, make sure all connections are tight and all components are in good condition. Never use your hand to check for suspected leaks under pressure. Use a piece of cardboard or wood for this purpose. If injured by leaking fluid, see your doctor immediately.

Failure to comply could result in death or serious injury.

W0178A

Understand that your safety and the safety of other persons is measured by how you service and operate this machine. Know the positions and operations of all controls before you try to operate. **MAKE SURE YOU CHECK ALL CONTROLS IN A SAFE AREA BEFORE STARTING YOUR WORK.**

READ THIS MANUAL COMPLETELY AND MAKE SURE YOU UNDERSTAND THE CONTROLS. All equipment has a limit. Make sure you understand the stability and load characteristics of this machine before you start to operate.

NOTE: Safety messages in this section point out specific safety hazards which can be encountered during the normal operation and maintenance of your machine. These safety messages also give possible ways of dealing with these conditions.

The safety information given in this manual does not replace safety codes, insurance needs, federal, state and local laws. Make sure your machine has the correct equipment needed by the local laws and regulations.

Additional safety messages are used in the text of the manual to indicate specific safety hazards. See your dealer for more information if you have any questions.

CASE IH is continuing to work for your safety by making machines with better protection and by giving these rules for safe operation.

General safety rules

Use caution when operating the machine on slopes. Raised equipment, full tanks and other loads will change the center of gravity of the machine. The machine can tip or roll over when near ditches and embankments or uneven surfaces.

Travel speed must be such that complete control and machine stability is maintained at all times. Reduce speed when turning, crossing slopes and when on rough, slick or muddy surfaces.

Never permit anyone to ride on the machine.

Some illustrations in this manual will show shields or cover panels removed for purposes of clarity. **DO NOT** operate this machine with any of the shields or cover panels removed.

Be careful when checking singulator spools for wear. The spools have sharp edges that can cut your hands.

Wear gloves and be careful when inspecting or replacing the furrow firming points. The disks are sharp and could cut or scrape hands.

Never operate the machine under the influence of alcohol, drugs or while otherwise impaired.

Pay attention to overhead power lines and hanging obstacles. High voltage lines may require significant clearance for safety.

Hydraulic oil or diesel fuel leaking under pressure can penetrate the skin, causing serious injury or infection.

DO NOT use your hand to check for leaks. Use a piece of cardboard or paper.

Stop engine, remove key and relieve the pressure before connecting or disconnecting fluid lines.

Make sure all components are in good condition and tighten all connections before starting the engine or pressurizing the system.

If hydraulic fluid or diesel penetrates the skin, seek medical attention immediately.

Continuous long term contact with hydraulic fluid may cause skin cancer. Avoid long term contact and wash the skin promptly with soap and water.

Keep clear of moving parts. Loose clothing, jewelry, watches, long hair and other loose or hanging items can become entangled in moving parts.

Wear protective equipment when appropriate.

DO NOT attempt to remove material from any part of the machine while it is being operated or components are in motion.

Make sure all guards and shields are in good condition and properly installed before operating machine. Never operate the machine with shields removed. Always closed access doors or panels before operating the machine.

Dirty or slippery steps, ladders, walkways and platforms can cause falls. Make sure these surfaces remain clean and clear of debris.

A person or pet within the operating area of a machine can be struck or crushed by the machine or its equipment. DO NOT allow anyone to enter the work area.

Raised equipment and/or loads can fall unexpectedly and crush persons underneath. Never allow anyone to enter the area underneath raised equipment during operation.

Review this manual before each season of use.

Never allow anyone unfamiliar, untrained, or complacent to operate the implement.

Use extreme care when cleaning, filling, or adjusting the implement.

DO NOT enter tank unless another person is present.

DO NOT work around rotating equipment. Loose clothing, rings, watches, etc. may get caught and cause serious injury.

Air and air hoses

Compressor hoses may move unexpectedly when suddenly disconnected.

Use proper air nozzles. Never use compressed air to clean off clothes or otherwise direct it toward yourself.

General maintenance safety

Keep area used for servicing the machine clean and dry. Clean up spilled fluids.

Service machine on a firm level surface.

Install guards and shields after servicing the machine.

Close all access doors and install all panels after servicing the machine.

Do not attempt to clean, lubricate, clear obstructions or make adjustments to the machine while it is in motion or while the engine is running.

Always make sure working area is clear of tools, parts, other persons and pets before you start operating the machine.

Unsupported hydraulic cylinders can lose pressure and drop the equipment causing a crushing hazard. Do not leave equipment in a raised position while parked or during service, unless securely supported.

Incorrect towing procedures can cause accidents. When towing a disabled machine follow the procedure in this manual. Use only rigid tow bars.

Stop the engine, remove key and relieve the pressure before disconnecting or connecting fluid lines.

Stop the engine and remove key before disconnecting or connecting electrical connections.

Replace damage or worn tubes, hoses, electrical wiring, etc.

When welding follow the instructions in the manual. Always disconnect battery before welding on machine. Always wash your hands after handling battery components.

Wheels and tires

DANGER

Explosion hazard!

Welding to a wheel can create an explosive air and gas mixture. Removing air from the tire or loosening the tire on the wheel (breaking the bead) will NOT eliminate the hazard. ALWAYS remove the tire completely from the wheel before welding.

Failure to comply will result in death or serious injury.

D0033A

Make sure tires are correctly inflated. Do not exceed recommended load or pressure. Follow instruction in the manual for proper tire inflation.

Tires are heavy. Handling tires without the proper equipment could cause death or serious injury.

Never weld on a wheel rim with a tire installed. Always remove tire completely from rim prior to welding.

Always have a qualified tire technician service the tires and rims. If a tire has lost all pressure, take the tire and rim to a tire shop or your dealer for service. Explosive separation of the tire can cause serious injury.

Driving on public roads and general transportation safety (if applicable)

The Slow Moving Vehicle (SMV) sign is located at the rear of the implement.

Comply with local laws and regulations.

Use appropriate lighting to meet local regulations.

Make sure the Slow Moving Vehicle (SMV) emblem and/or Speed Indicator Symbol (SIS) is visible.

Use safety chains for trailed equipment when provided with machine or equipment.

Lift implements and attachments high enough above ground to prevent accidental contact with road.

When transporting equipment or machine on a transport trailer, make sure it is properly secured. Be sure the SMV or SIS on the equipment or machine is covered while being transported on a trailer.

Be aware of overhead structures or power lines and make sure the machine and/or attachments can pass safely under.

Travel speed should be such that complete control and machine stability is maintained at all times.

Slow down and signal before turning.

Pull over to allow faster traffic to pass.

Follow correct towing procedure for equipment with or without brakes.

Reflectors and warning lamps

Flashing amber warning lamps must be used when operating on the public roads.

Power Take-Off (PTO) (if applicable)

PTO driven machinery can cause death or serious injury. Before working on or near the PTO shaft or servicing or clearing the driven machine, put the PTO lever in the disengage position, stop the engine and remove the key.

Whenever a PTO is in operation, a guard must be in place to prevent death or injury to the operator or bystanders.

Check the tractor operators manual for the correct drawbar position when using the PTO.

When doing stationary PTO work, keep clear of all moving parts and make sure appropriate guards are in place.

Never use a spline adapter:

- Match the right tractor PTO spline and speed with the PTO driveshaft provided with an implement. This will assure proper geometry and operating speed.
- Never operate **540 RPM** implements at **1000 RPM**.
- Never operate **1000 RPM** implements at **540 RPM**.
- Use of PTO adapters will void the warranty of the drive shaft, and the PTO drive train of the machine and implement.
- For correct hitch geometry, see **General specification ()**.

Fire and explosion prevention

Fuel or oil leaked or spills on hot surfaces or electrical components can cause a fire.

Crop materials, trash, debris, bird nests or flammable material can ignite on hot surfaces.

Always have a fire extinguisher on or near the machine.

Make sure the fire extinguisher(s) is maintained and serviced according to the manufacturer's instructions.

At least once each day and at the end of the day remove all trash and debris from the machine especially around hot components such as engine, transmission, exhaust, battery, etc. More frequent cleaning of your machine may be necessary depending on the operating environment and conditions.

At least once each day, remove debris accumulation around moving components such as bearings, pulleys, belts, gears cleaning fan, etc. More frequent cleaning of your machine may be necessary depending on the operating environment and conditions.

Inspect the electrical system for loose connections or frayed insulation. Repair or replace loose or damaged parts.

Do not expose the machine to flames, burning brush or explosives.

Promptly investigate any unusual smells or odors that may occur during operation of the machine.

Personal Protective Equipment (PPE)

Wear personal protective equipment such as hard hat, safety glasses or goggles, heavy gloves, hearing protection, protective clothing, etc.

Do Not Operate tag

Before you start servicing the machine, attach a 'Do Not Operate' warning tag to the machine in an area that will be visible.

Hazardous chemicals

WARNING

Chemical hazard!

Wear protective clothing and a face shield when working with chemicals. Do not allow chemicals to contact skin or eyes. Always follow the chemical manufacturer's instructions. Failure to comply could result in death or serious injury.

W0052A

WARNING

Chemical hazard!

Misuse including excessive application rate, uneven application, spray drift, and label violations can cause injury to crops, livestock, persons, and the environment. Follow all instructions on the container label. Always operate spray equipment according to the chemical manufacturer's instructions. Failure to comply could result in death or serious injury.

W0053A

If you are exposed to or come in contact with hazardous chemicals you can be seriously injured. The fluids, lubricants, paints, adhesives, coolant, etc. required for the function of your machine can be hazardous. They may be attractive and harmful to domestic animals as well as humans.

Material Safety Data Sheets (MSDS) provide information about the chemical substances within a product, safe handling and storage procedures, first aid measures and procedures to be taken in the event of a spill or accidental release. MSDS are available from your dealer.

Before you service your machine check the MSDS for each lubricant, fluid, etc. used in this machine. This information indicates the associated risks and will help you service the machine safely. Follow the information in the MSDS, on manufacturer containers, as well as the information in this manual when servicing the machine.

Dispose of all fluids, filters and containers in an environmentally safe manner according to local laws and regulations. Check with local environmental and recycling centers or your dealer for correct disposal information.

Store fluids and filters in accordance with local laws and regulations. Use only appropriate containers for the storage of chemicals or petrochemical substances.

Keep out of reach of children or other unauthorized persons.

Additional precautions are required for applied chemicals. Obtain complete information from the manufacturer or distributor of the chemicals before using them.

In case of fire involving chemicals, chemical containers or equipment containing chemicals, remain upwind and avoid exposure to smoke from the fire.

Precaution when using chemicals

Agricultural chemicals can be dangerous. These chemicals include fertilizers, fungicides, herbicides and pesticides or insecticides. These may be in liquid, dust or granular form. Rubber gloves, chemical respirator, goggles and/or other protective clothing may be required for certain chemicals.

Improper selection or use can injure people, animals, plants and soils. Care must be exercised to avoid damage to other people's property.

Chemicals can be used in one or more of the following ways:

- Treated seeds
- Added to seed in seed hopper
- Applied with granular feeding mechanisms
- Applied with dusting or spraying equipment

When adjusting, servicing, cleaning and storing machines that have chemical materials associated with them, use the same degree of care that is required for the initial handling of these chemicals.

When chemicals have been used in a machine, it is of utmost importance to inform all employees, service personnel and others of any potential chemical hazard and required safety precautions before they come in contact with the machine, its contents or the applied material.

Utility safety (Self-propelled machines and applicable attachment and accessories)

When digging or using ground engaging equipment, be aware of buried cables and other services. Contact your local utilities or authorities, as appropriate to determine the locations of services.

Make sure the machine has sufficient clearance to pass in all directions. Pay special attention to overhead power lines and hanging obstacles. High voltage lines may require significant clearance for safety. Contact local authorities or utilities to obtain safe clearance distances from high voltage power lines.

Retract raised or extended components, if necessary. Remove or lower radio antennas or other accessories. Should a contact between the machine and an electric power source occur the following precautions must be taken: Stop the machine movement immediately. Apply the park brake, stop the engine and remove the key. Check if you can safely leave the cab or your actual position without contact with electrical wires. If not, stay in your position and call for help. If you can leave your position without touching lines, jump clear of the machine to make sure you do not make contact with the ground and the machine at the same time. Do not permit anyone to touch the machine until power has been shut off to the power lines.

Electrical storm safety

Do not operate machine during an electrical storm.

If you are on the ground during an electrical storm, stay away from machinery and equipment. Seek shelter in a permanent, protected structure.

If an electrical storm should strike during operation, remain in the cab. Do not leave the cab or operator's platform. Do not make contact with the ground or objects outside the machine.

Mounting and dismounting

Mount and dismount the machine only at designated locations that have handholds, steps or ladders.

Do not jump off the machine.

Make sure steps, ladders and platforms remain clean and clear of debris and foreign substances. Injury may result from slippery surfaces.

Face the machine when mounting and dismounting.

Maintain a three-point contact with steps, ladders and handholds.

Never mount or dismount from a moving machine.

Do not use the steering wheel or other controls or accessories as handholds when entering or exiting the cab or operator's platform.

⚠️ Working at heights (if applicable) ⚠️

When the normal use and maintenance of the machine requires working at heights: Correctly use installed steps, ladders and railings. Never use ladders, steps or railings while the machine is moving. Do not stand on surfaces which are not designed as steps or platforms.

Do not use the machine as a lift, ladder or platform for working at heights.

⚠️ Noise level safety ⚠️

Planter fans operate at **80 - 85 dB**, measured three feet (**0.9 m (3.0 ft)**) from the fan.

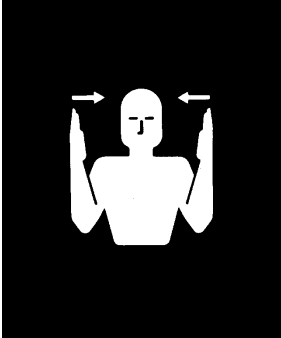
Exposure to loud noises can cause hearing damage. Always wear hearing protection when operating noisy equipment or when working in a noisy environment.

⚠️ Decommission safety ⚠️

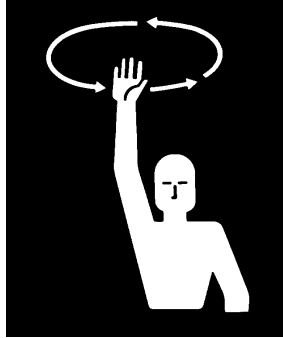
When the machine is taken out of service because it is damaged beyond repair or has reached the end of its useful life, disassembly, scrapping and/or recycling of components, fluids, etc. must be performed only by a qualified technician using service instructions and in compliance with local laws and regulations.

Hand signals

It is often necessary to communicate using hand signals in agricultural operations when noise or distance inhibit communication by voice. The **ASAE S351** standard illustrates these hand signals, which provide an easy means of communication, particularly in the interest of safety.



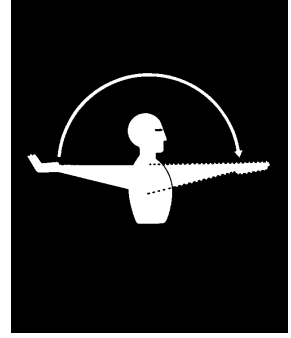
THIS FAR TO GO - Place palms at ear level facing head and move laterally inward to indicate remaining distance to go.



COME TO ME - Raise the arm vertically overhead, palm to the front, and rotate in large horizontal circles.



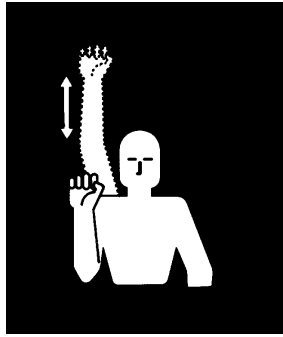
MOVE TOWARD ME, FOLLOW ME - Point toward person(s), vehicle(s), or unit(s), beckon by holding the arm horizontally to the front, palm up, and motioning toward the body.



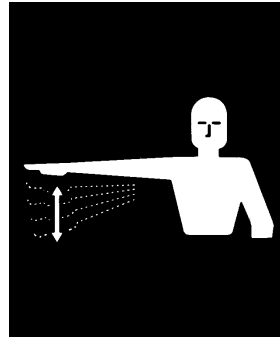
MOVE OUT, TAKE OFF - Face the desired direction of movement; hold the arm extended to the ear; then swing it overhead and forward in the direction of desired movement until it is horizontal, palm down.



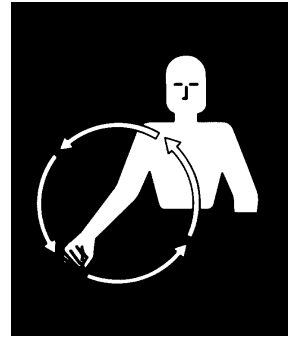
STOP - Raise hand upward to the full extent of the arm, palm to the front. Hold that position until the signal is understood.



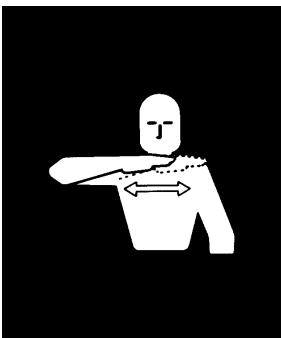
SPEED IT UP, INCREASE SPEED - Raise the hand to the shoulder, fist closed; thrust the fist upward to the full extent of the arm and back to the shoulder rapidly several times.



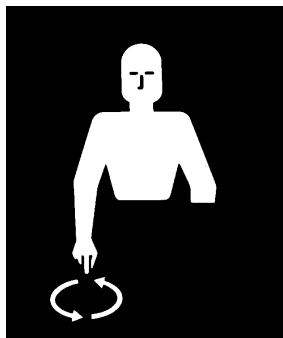
SLOW IT DOWN, DECREASE SPEED - Extend the arm horizontally sideways, palm down, and wave arm downward



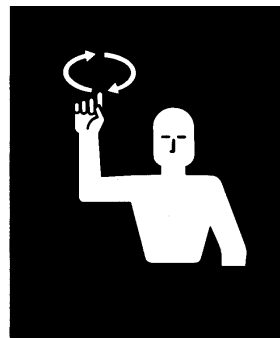
START THE ENGINE - Simulate cranking of vehicles by moving arm in circular motion at waist level.



STOP THE ENGINE - Draw right hand, palm down, across the neck in a "throat cutting" motion from left to right.



LOWER EQUIPMENT - Make circular motion with either hand pointing to the ground.



RAISE EQUIPMENT - Make circular motion with either hand at head level.

Safety rules - Ecology and the environment

Soil, air, and water quality is important for all industries and life in general. When legislation does not yet rule the treatment of some of the substances that advanced technology requires, sound judgment should govern the use and disposal of products of a chemical and petrochemical nature.

Familiarize yourself with the relative legislation applicable to your country, and make sure that you understand this legislation. Where no legislation exists, obtain information from suppliers of oils, filters, batteries, fuels, anti-freeze, cleaning agents, etc., with regard to the effect of these substances on man and nature and how to safely store, use, and dispose of these substances.

Helpful hints

- Avoid the use of cans or other inappropriate pressurized fuel delivery systems to fill tanks. Such delivery systems may cause considerable spillage.
- In general, avoid skin contact with all fuels, oils, acids, solvents, etc. Most of these products contain substances that may be harmful to your health.
- Modern oils contain additives. Do not burn contaminated fuels and or waste oils in ordinary heating systems.
- Avoid spillage when you drain fluids such as used engine coolant mixtures, engine oil, hydraulic fluid, brake fluid, etc. Do not mix drained brake fluids or fuels with lubricants. Store all drained fluids safely until you can dispose of the fluids in a proper way that complies with all local legislation and available resources.
- Do not allow coolant mixtures to get into the soil. Collect and dispose of coolant mixtures properly.
- The air-conditioning system contains gases that should not be released into the atmosphere. Consult an air-conditioning specialist or use a special extractor to recharge the system properly.
- Repair any leaks or defects in the engine cooling system or hydraulic system immediately.
- Do not increase the pressure in a pressurized circuit as this may lead to a component failure.
- Protect hoses during welding. Penetrating weld splatter may burn a hole or weaken hoses, allowing the loss of oils, coolant, etc.

Battery recycling

Batteries and electric accumulators contain several substances that can have a harmful effect on the environment if the batteries are not properly recycled after use. Improper disposal of batteries can contaminate the soil, groundwater, and waterways. CASE IH strongly recommends that you return all used batteries to a CASE IH dealer, who will dispose of the used batteries or recycle the used batteries properly. In some countries, this is a legal requirement.



Mandatory battery recycling

NOTE: *The following requirements are mandatory in Brazil.*

Batteries are made of lead plates and a sulfuric acid solution. Because batteries contain heavy metals such as lead, CONAMA Resolution 401/2008 requires you to return all used batteries to the battery dealer when you replace any batteries. Do not dispose of batteries in your household garbage.

Points of sale are obliged to:

- Accept the return of your used batteries
- Store the returned batteries in a suitable location
- Send the returned batteries to the battery manufacturer for recycling

Safety signs

The following safety signs are placed on your machine as a guide for your safety and for those working with you. Walk around the machine and note the content and location of these safety signs before operating your machine.

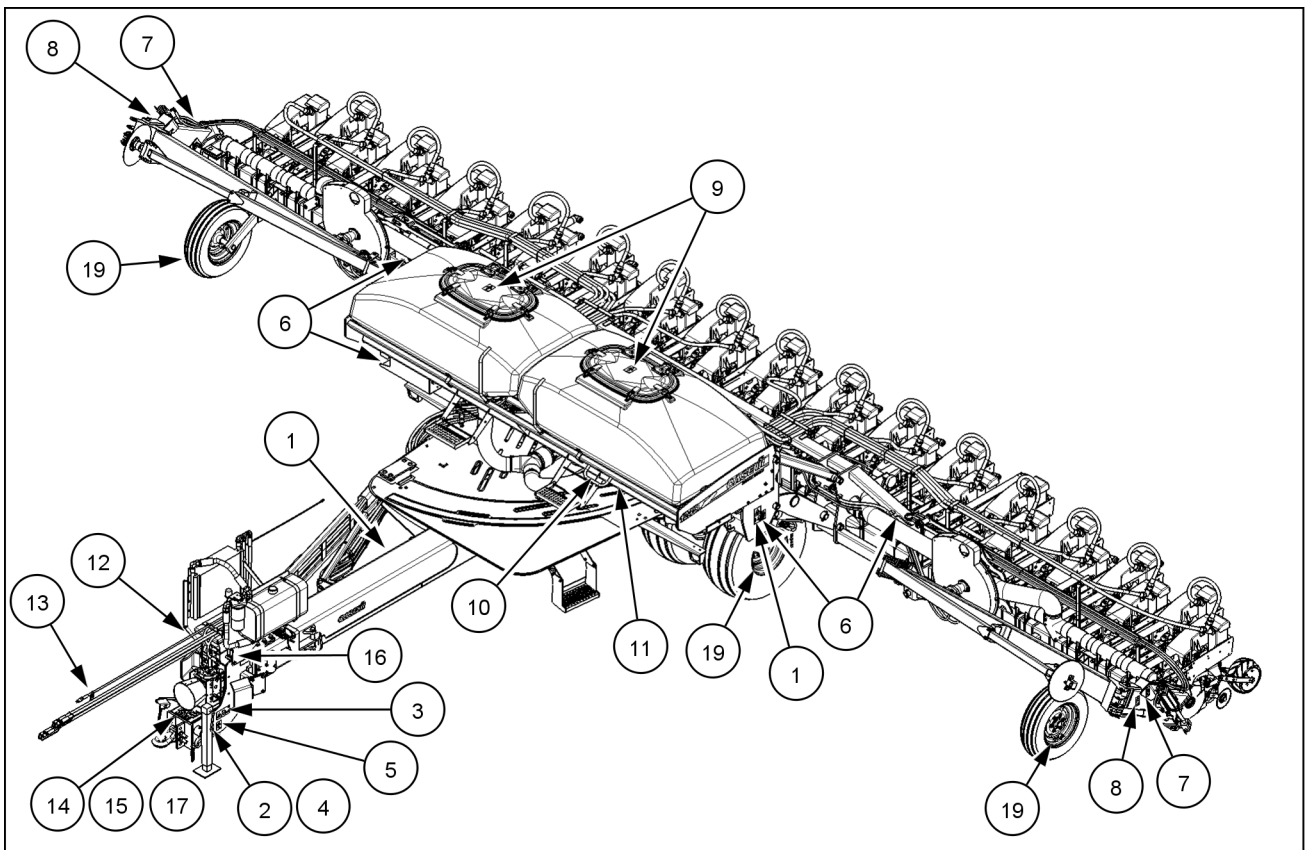
Keep safety signs clean and legible. Clean safety signs with a soft cloth, water, and a gentle detergent. Do not use solvent, gasoline, or other harsh chemicals. Solvents, gasoline, and other harsh chemicals may damage or remove safety signs.

Replace all safety signs that are damaged, missing, painted over, or illegible. If a safety sign is on a part that is replaced, make sure the safety sign is installed on the new part.



Safety signs that display the "Read Operator's Manual" symbol are intended to direct the operator to the operator's manual for further information regarding maintenance, adjustments, or procedures for particular areas of the machine. When a safety sign displays this symbol, refer to the appropriate page of the operator's manual.

NOTE: New decals are available from your CASE IH dealer.



SAPE13PLA0279FA 1

16/31 Split Row planter shown

INTRODUCTION

REF	Decal Description
(1)	Warning, Crush hazard
(2)	Warning, Machine safety
(3)	Warning, Tipping hazard
(4)	Warning, Machine transport
(5)	Warning, Chemical hazard (wear appropriate personal protective equipment)
(6)	Warning, Crush hazard
(7)	Warning, Crush hazard (markers)
(8)	Danger, Electrocution hazard
(9)	Warning, Chemical hazard (pressurized)
(10)	Notice, No step
(11)	Warning, Trip hazard
(12)	Warning, Pressurized contents hazard
(13)	Notice, Fan motor case drain hazard
(14)	Notice, Machine damage hazard (PTO shaft length)
(15)	Notice, Machine damage hazard (Gear box mounting location)
(16)	Danger, Rotation hazard
(17)	Notice, Machine damage hazard (PTO shaft lubrication)
(18)	Notice, Machine damage hazard (Tank filling instructions, Liquid fertilizer option, not shown)
(19)	Notice, Machine damage hazard (Wheel bolt torque)

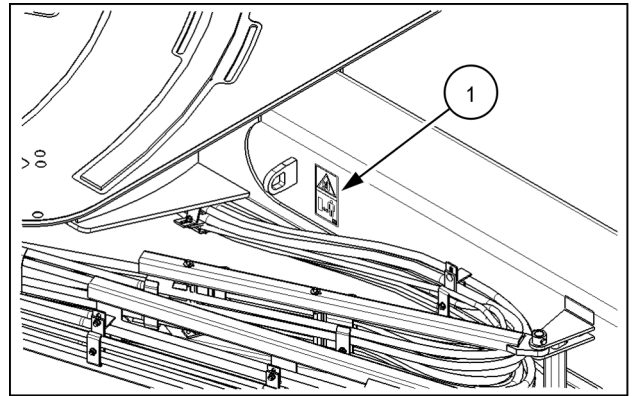
INTRODUCTION

WARNING
Crush Hazard
KEEP CLEAR when machine is folding or unfolding.
Failure to comply could result in death or serious injury.
Quantity: 2
English: 419481A1



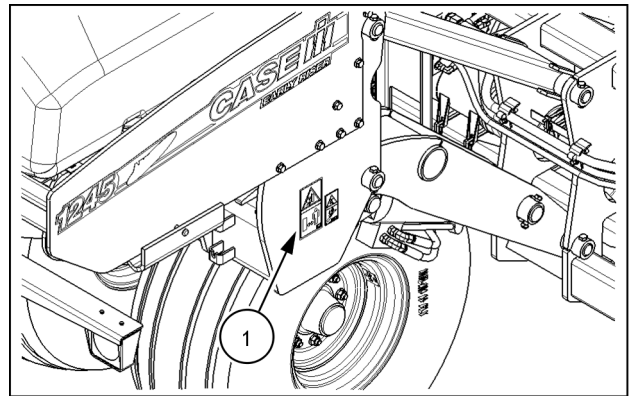
419481A1 2

Right-hand side of the outer hitch tongue frame (1).



SAPE13PLA0289AA 3

Left-hand side of the main lift frame (1).



SAPE13PLA0290AA 4

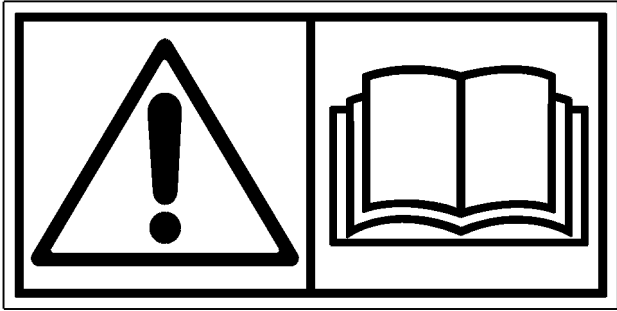
WARNING

Before operating machine, read operator's manual and ALL SAFETY instructions. If manual is missing, contact your dealer or service department.

1. Before starting engine or operation, clear area of bystanders.
 2. Disengage drives including PTO. Stop engine, wait for all movement to stop before leaving operator's position.
 3. Keep all shields in place. Keep hands, feet clothing and hair away from moving parts.
 4. Keep riders off machines.
 5. Use Slow-Moving Vehicle (SMV) identification emblem and flashing warning lights when operating on highways, except when prohibited by law.
 6. Never adjust, lubricate, clean or unplug machine with engine running.
- Failure to comply could result in death or serious injury.

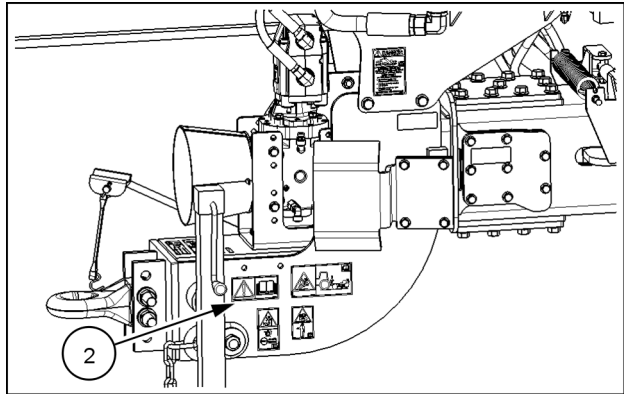
Quantity: 3

English: 47358801



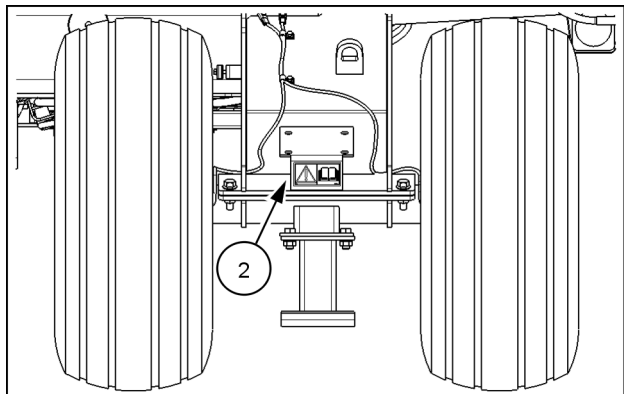
47358801A 5

Left-hand side of the front hitch (2).



SAPE13PLA0291AA 6

Left and right carrying wheel frame shipping stand locations (24 Row 20 planters only) (2).



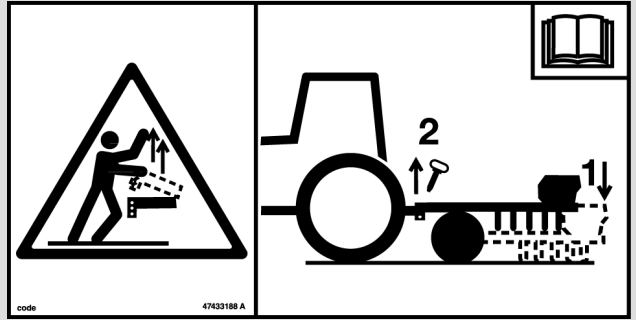
SAPE13PLA0292AA 7

WARNING

Tipping Hazard

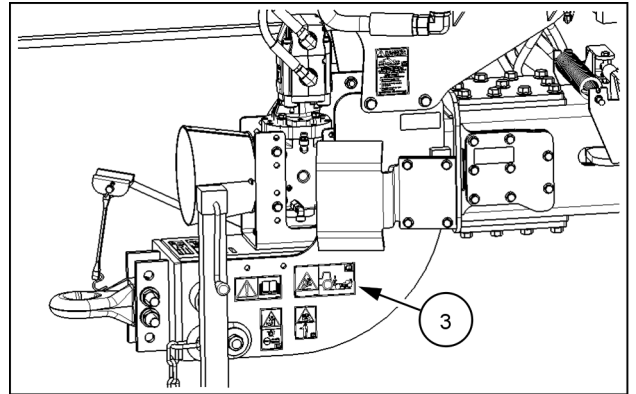
Fold or lower implement before unhooking from tractor drawbar.
Failure to comply could result in death or serious injury.

Quantity: 1
English: 47433188



47433188 8

Left-hand side of the front hitch (3).



SAPE13PLA0291AA 9

WARNING

Properly prepare machine for transport / roading.

Transport with Ag Tractor only.

32 km/h (20 mph) - MAX. road speed.

DO NOT transport more than half filled tanks or hoppers.

Towing unit must weigh at least .67 x GROSS weight of towed machine include weight in tanks or hoppers.

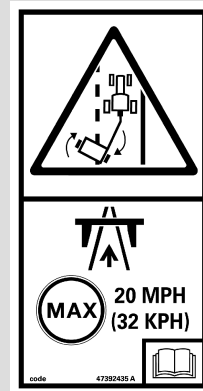
Towing unit must be equipped with compatible electrical connections to operate lights.

Use caution when on turns, inclines, or hazardous road conditions to avoid loss of control.

Attach properly sized safety chain.

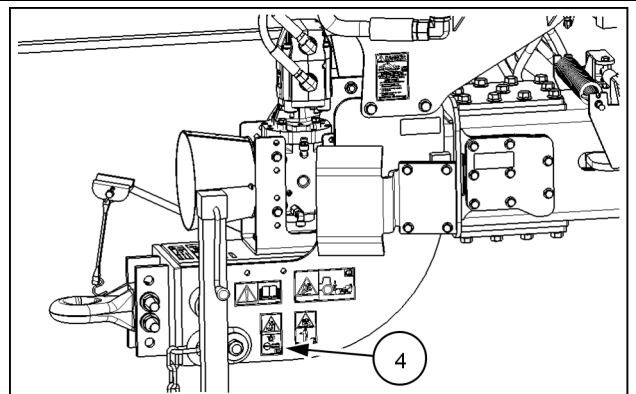
Failure to comply could result in death or serious injury.

Quantity: 1
English: 47392435



47392435 10

Left-hand side of the front hitch (4).



SAPE13PLA0291AA 11

WARNING

Chemical hazard

Wear protective equipment as directed on chemical label.

Failure to comply could result in death or serious injury.

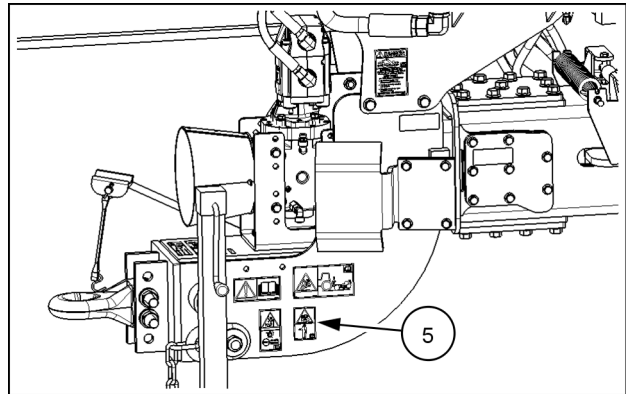
Quantity: 1

English: 47433182



47433182 12

Left-hand side of the front hitch (5).



SAPE13PLA0291AA 13

Thank you so much for reading.
Please click the “Buy Now!”
button below to download the
complete manual.



After you pay.

You can download the most
perfect and complete manual in
the world immediately.

Our support email:

ebooklibonline@outlook.com