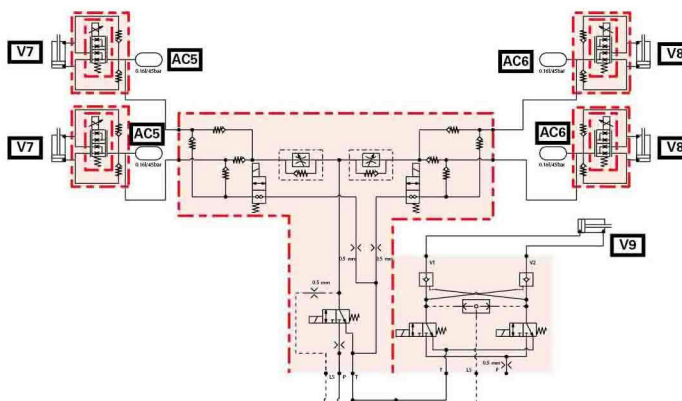
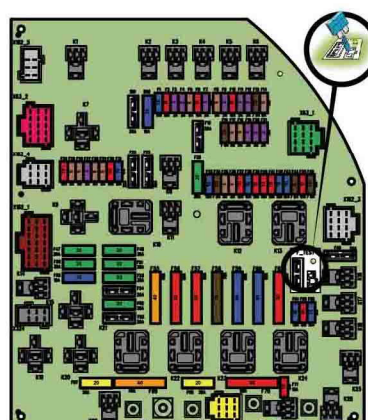


Technician Service Book - series tractors MF 7700

Schémas électriques et hydrauliques



Technician Service Book - series tractors MF 7700

1 General	1-1
1.1 General specifications	1-3
1.1.1 General specifications for MF 7714, MF 7715, MF 7716 and models MF 7718	1-3
1.1.1.1 Models MF 7700 Dyna-4	1-3
1.1.1.2 Models MF 7700 Dyna-6	1-11
1.1.1.3 MF 7700 Dyna-VT models	1-20
1.1.2 General specifications for MF 7719, MF 7720, MF 7722, MF 7724 and models MF 7726	1-28
1.1.2.1 MF 7700 Dyna-6 models	1-28
1.1.2.2 MF 7700 Dyna-VT models	1-39
1.2 Forward speeds	1-50
1.2.1 Forward speeds for MF 7714, MF 7715, MF 7716 and models MF 7718	1-50
1.2.1.1 Forward speed at maximum speed with Dyna-4 40 kph transmission and 20.8R38 tires	1-50
1.2.1.2 Forward speed at maximum speed with Dyna-6 40 kph transmission and 20.8R38 tires	1-51
1.2.1.3 Forward speed at maximum speed with Dyna-6 50 kph transmission and 20.8R38 tires	1-53
1.2.1.4 Forward speed for all models with Dyna-VT transmission	1-54
1.2.2 Forward speeds for MF 7719, MF 7720, MF 7722, MF 7724 and models MF 7726	1-55
1.2.2.1 Forward speed at maximum speed with Dyna-6 40 kph transmission: and 20.8R42 tires	1-55
1.2.2.2 Forward speed at maximum speed with Dyna-6 50 kph transmission: and 20.8R42 tires	1-57
1.2.2.3 Forward speed with Dyna-6 transmission, 40 kph and 50 kph with creeper speed option and 20.8R42 tires	1-59
1.2.2.4 Forward speed for all models with Dyna-VT transmission	1-60
1.3 Dimensions and weights	1-61
1.3.1 Dimensions and weights for MF 7714, MF 7715, MF 7716 and models MF 7718	1-61
1.3.1.1 Dimensions and weights	1-61
1.3.2 Dimensions and weights for MF 7719, MF 7720, MF 7722, MF 7724 and models MF 7726	1-64
1.3.2.1 Dimensions and weights	1-64
1.4 Attachment points	1-75
1.4.1 Attachment points for MF 7714, MF 7715, MF 7716 and models MF 7718	1-75
1.4.1.1 Attachment points: Dyna-4/Dyna-6 models without front linkage	1-75
1.4.1.2 Attachment points: Dyna-4/Dyna-6 models with front linkage	1-76
1.4.1.3 Attachment points: Dyna-VT models without front linkage	1-78
1.4.1.4 Attachment points: Dyna-VT models with front linkage	1-79
1.4.2 Attachment points for MF 7719, MF 7720, MF 7722, MF 7724 and models MF 7726	1-81
1.4.2.1 Attachment points: Dyna-6 models without front linkage	1-81
1.4.2.2 Attachment points: Dyna-6 models with 4 t front linkage (Imperial: 4.4 US ton)	1-82
1.4.2.3 Attachment points: Dyna-VT models without front linkage	1-84
1.4.2.4 Attachment points: Dyna-VT models with 4 t front linkage (Imperial: 4.4 US ton)	1-85
1.5 Capacities	1-87

1.5.1	Capacities for MF 7714, MF 7715, MF 7716 and models MF 7718	1-87
1.5.1.1	Capacities	1-87
1.5.2	Capacities for MF 7719, MF 7720, MF 7722, MF 7724 and models MF 7726	1-88
1.5.2.1	Capacities for models with a Tier 3/Stage IIIA engine	1-88
1.5.2.2	Capacities for models with a Tier 4F/Stage IV SCR Technology engine	1-89
1.5.3	Conversion table	1-91
1.6	Tightening torques, retaining compounds and sealing products	1-94
1.6.1	Retaining compounds and sealing products	1-94
1.6.2	Tightening torques for screws and nuts	1-95
1.6.3	Tightening torques for hydraulic unions	1-99
2	Error codes	2-1
2.1	Error codes	2-3
2.1.1	General table of faults	2-3
2.1.2	Indicator light panel	2-6
2.1.3	Indication of faults	2-13
2.1.4	Description of error code format	2-16
2.1.5	Instrument panel error codes Dyna-VT	2-17
2.1.6	Instrument panel error codes Dyna-4/Dyna-6	2-18
2.1.7	AGCO Power Tier 3/Stage IIIA engine and Tier 4F/Stage IV SCR Technology engine error codes	2-19
2.1.8	Dyna-VT transmission error codes	2-35
2.1.9	Transmission error codes Dyna-4/Dyna-6	2-38
2.1.10	ParkLock error codes	2-40
2.1.11	ParkLock error codes	2-41
2.1.12	Front axle error codes Dyna-VT	2-42
2.1.13	Front axle error codes for Dyna-4/Dyna-6	2-42
2.1.14	Rear power take-off error codes Dyna-VT	2-43
2.1.15	Power take-off error codes Dyna-4/Dyna-6	2-45
2.1.16	Error codes for the high-pressure braking	2-45
2.1.17	Rear linkage error codes	2-46
2.1.18	Front power lift error codes	2-47
2.1.19	Armrest error codes	2-47
2.1.20	Hydraulic valve error codes	2-49
2.1.21	Air conditioning error codes	2-50
2.1.22	Error codes of the keypad in the pillar	2-52
2.1.23	Suspended cab error codes	2-52
3	Fuse box	3-1
3.1	Fuse box	3-3
3.1.1	Description of the main fuse box	3-3
3.1.2	Description of the secondary fuse box (depending on model)	3-21
3.1.3	Description of the secondary fuse box (depending on model)	3-26
3.1.4	Battery isolator	3-30
4	Electrical diagrams	4-1
4.1	Electrical diagrams	4-7
4.1.1	Identification of electrical diagrams	4-7
4.1.2	Identification of electrical connectors from X1 to X500	4-9
4.1.3	Identification of electrical connectors from X501 to X1000	4-21
4.1.4	Identification table for cable colors	4-30
4.1.5	Electrical diagrams	4-33
4.1.5.1	EFD00000_12 - Battery 12 V power supply points	4-33
4.1.5.2	EFD00000_13 - Battery earth points	4-34
4.1.5.3	EFD00100_17 - 4-wheel drive Dyna-VT	4-36
4.1.5.4	EFD00100_18 - 4-wheel drive Dyna-6	4-37
4.1.5.5	EFD00100_19 - 4-wheel drive Dyna-4	4-37

4.1.5.6	EFD00101_17 - Differential lock Dyna-VT	4-38
4.1.5.7	EFD00101_18 - Differential lock Dyna-6	4-39
4.1.5.8	EFD00101_19 - Differential lock Dyna-4	4-40
4.1.5.9	EFD00106_28 - rear power take-off Dyna-VT	4-41
4.1.5.10	EFD00106_29 - GPA40 mechanical-control rear power take-off Dyna-6	4-42
4.1.5.11	EFD00106_30 - GPA40 two-speed electrohydraulic-control rear power take-off Dyna-6	4-43
4.1.5.12	EFD00106_31 - GPA40 three-speed electrohydraulic-control rear power take-off Dyna-6	4-44
4.1.5.13	EFD00106_32 - GPA20 mechanical-control rear power take-off Dyna-6	4-45
4.1.5.14	EFD00106_33 - GPA20 electrohydraulic-control rear power take-off Dyna-6	4-46
4.1.5.15	EFD00106_34 - GPA20 mechanical-control rear power take-off Dyna-4	4-47
4.1.5.16	EFD00106_35 - GPA20 electrohydraulic-control rear power take-off Dyna-4	4-48
4.1.5.17	EFD00107_11 - front power take-off Dyna-VT	4-49
4.1.5.18	EFD00107_12 - front power take-off Dyna-6	4-50
4.1.5.19	EFD00107_13 - front power take-off Dyna-4	4-51
4.1.5.20	EFD00111_31 - transmission Dyna-VT_1/2	4-52
4.1.5.21	EFD00111_31 - transmission Dyna-VT_2/2	4-53
4.1.5.22	EFD00111_32 - GTA1540 transmission Dyna-6_1/4	4-54
4.1.5.23	EFD00111_32 - GTA1540 transmission Dyna-6_2/4	4-55
4.1.5.24	EFD00111_32 - GTA1540 transmission Dyna-6_3/4	4-56
4.1.5.25	EFD00111_32 - GTA1540 transmission Dyna-6_4/4	4-57
4.1.5.26	EFD00111_33 - GTA2520 transmission Dyna-6 Load Sensing_1/4	4-58
4.1.5.27	EFD00111_33 - GTA2520 transmission Dyna-6 Load Sensing_2/4	4-59
4.1.5.28	EFD00111_33 - GTA2520 transmission Dyna-6 Load Sensing_3/4	4-60
4.1.5.29	EFD00111_33 - GTA2520 transmission Dyna-6 Load Sensing_4/4	4-61
4.1.5.30	EFD00111_34 - GTA2520 Dyna-6 Open Center transmission_1/4	4-62
4.1.5.31	EFD00111_34 - GTA2520 Dyna-6 Open Center transmission_2/4	4-63
4.1.5.32	EFD00111_34 - GTA2520 Dyna-6 Open Center transmission_3/4	4-64
4.1.5.33	EFD00111_34 - GTA2520 Dyna-6 Open Center transmission_4/4	4-65
4.1.5.34	EFD00111_35 - GTA2520 transmission Dyna-4 Load Sensing_1/2	4-66
4.1.5.35	EFD00111_35 - GTA2520 transmission Dyna-4 Load Sensing_2/2	4-67
4.1.5.36	EFD00111_36 - GTA2520 Dyna-4 Open Center transmission_1/2	4-68
4.1.5.37	EFD00111_36 - GTA2520 Dyna-4 Open Center transmission_2/2	4-69
4.1.5.38	EFD00113_7 - Cigarette lighter	4-70
4.1.5.39	EFD00114_30 - Radio	4-71
4.1.5.40	EFD00116_12 - Suspended cab	4-72
4.1.5.41	EFD00117_28 - Additional heater	4-73
4.1.5.42	EFD00117_39 - Automatic air conditioning	4-74
4.1.5.43	EFD00117_40 - Manual air conditioning for standard roof	4-75
4.1.5.44	EFD00117_41 - Manual air conditioning for high-visibility roof	4-76
4.1.5.45	EFD00118_9 - DOT Matrix	4-77
4.1.5.46	EFD00119_10 - Rear windscreen wiper	4-78
4.1.5.47	EFD00120_12 - Front windscreen wiper	4-79
4.1.5.48	EFD00121_9 - parking brake Dyna-VT	4-80
4.1.5.49	EFD00121_10 - parking brake Dyna-6	4-81
4.1.5.50	EFD00121_11 - parking brake Dyna-4	4-82
4.1.5.51	EFD00122_8 - fuel gage Dyna-VT	4-83
4.1.5.52	EFD00122_9 - Dyna-4/ fuel gage Dyna-6	4-84
4.1.5.53	EFD00123 - C3000	4-85
4.1.5.54	EFD00123_24 - Datatronic CCD	4-86
4.1.5.55	EFD00123_25 - Isobus	4-87
4.1.5.56	EFD00123_30 - Auto-Guide™	4-88
4.1.5.57	EFD00124_10 - ParkLock Dyna-VT	4-89
4.1.5.58	EFD00124_11 - Dyna-4/ ParkLock Dyna-6	4-90
4.1.5.59	EFD00125_10 - Cab light	4-91

4.1.5.60	EFD00126_11 - Extreme cold weather heating with automatic air conditioning	4-92
4.1.5.61	EFD00126_12 - Extreme cold weather heating with manual air conditioning for tractors with standard roof	4-93
4.1.5.62	EFD00126_13 - Extreme cold weather heating with manual air conditioning for tractors with high-visibility roof	4-94
4.1.5.63	EFD00127_8 - Left-hand pillar 12 V socket	4-95
4.1.5.64	EFD00128_17 - EAME/ISO cab power socket	4-96
4.1.5.65	EFD00128_18 - NA/SAE cab power socket	4-97
4.1.5.66	EFD00128_20 - EAME/ISO cab power socket_1/2	4-98
4.1.5.67	EFD00128_20 - EAME/ISO cab power socket_2/2	4-99
4.1.5.68	EFD00128_21 - NA/SAE cab power socket_1/2	4-100
4.1.5.69	EFD00128_21 - NA/SAE cab power socket_2/2	4-101
4.1.5.70	EFD00129_12 - Diagnostics connector_1/2	4-102
4.1.5.71	EFD00129_12 - Diagnostics connector_2/2	4-103
4.1.5.72	EFD00129_13 - Diagnostics connector_1/2 with cab harnesses ACW039162 and ACW039167	4-105
4.1.5.73	EFD00129_13 - Diagnostics connector_2/2 with cab harnesses ACW039162 and ACW039167	4-105
4.1.5.74	EFD00130_5 - radar Dyna-VT	4-107
4.1.5.75	EFD00130_6 - Dyna-6 and radar Dyna-4	4-107
4.1.5.76	EFD00131_34 - CAN network Dyna-VT (tractor)_1/5 with Tier 4F/Stage IV SCR Technology engine and cab harness 4990243	4-108
4.1.5.77	EFD00131_34 - CAN network Dyna-VT (hitch)_2/5 with Tier 4F/Stage IV SCR Technology engine and cab harness 4990243	4-109
4.1.5.78	EFD00131_34 - CAN network Dyna-VT (engine)_3/5 with Tier 4F/Stage IV SCR Technology engine and cab harness 4990243	4-110
4.1.5.79	EFD00131_34 - CAN network Dyna-VT (isobus)_4/5 with Tier 4F/Stage IV SCR Technology engine and cab harness 4990243	4-111
4.1.5.80	EFD00131_34 - CAN network Dyna-VT (AGCO Power)_5/5 with Tier 4F/Stage IV SCR Technology engine and cab harness 4990243	4-112
4.1.5.81	EFD00131_35 - CAN network Dyna-6 (tractor)_1/7 with Tier 4F/Stage IV SCR Technology engine and cab harnesses ACW005780-ACW005784-4392642	4-113
4.1.5.82	EFD00131_35 - CAN network Dyna-6 (engine)_2/7 with Tier 4F/Stage IV SCR Technology engine and cab harnesses ACW005780-ACW005784-4392642	4-114
4.1.5.83	EFD00131_35 - CAN network Dyna-6 (hitch)_3/7 with Tier 4F/Stage IV SCR Technology engine and cab harnesses ACW005780-ACW005784-4392642	4-115
4.1.5.84	EFD00131_35 - CAN network Dyna-6 (isobus)_4/7 with Tier 4F/Stage IV SCR Technology engine and cab harnesses ACW005780-ACW005784-4392642	4-116
4.1.5.85	EFD00131_35 - CAN network Dyna-6 (tractor)_5/7 with Tier 4F/Stage IV SCR Technology engine and cab harnesses ACW005780-ACW005784-4392642	4-117
4.1.5.86	EFD00131_35 - CAN network Dyna-6 (engine)_6/7 with Tier 4F/Stage IV SCR Technology engine and cab harnesses ACW005780-ACW005784-4392642	4-118
4.1.5.87	EFD00131_35 - CAN network Dyna-6 (AGCO Power)_7/7 with Tier 4F/Stage IV SCR Technology engine and cab harnesses ACW005780-ACW005784-4392642	4-119
4.1.5.88	EFD00131_36 - CAN network Dyna-4 (tractor)_1/3 with Tier 4F/Stage IV SCR Technology engine and cab harnesses ACW017847-ACW022303-ACW021492-4391826	4-120
4.1.5.89	EFD00131_36 - CAN network Dyna-4 (engine)_2/3 with Tier 4F/Stage IV SCR Technology engine and cab harnesses ACW017847-ACW022303-ACW021492-4391826	4-121
4.1.5.90	EFD00131_36 - CAN network Dyna-4 AGCO Power_3/3 with Tier 4F/Stage IV SCR Technology engine and cab harnesses ACW017847-ACW022303-ACW021492-4391826	4-122
4.1.5.91	EFD00131_37 - CAN network Dyna-VT (tractor)_1/5 with Tier 3/Stage IIIA engine	4-123

4.1.5.92 EFD00131_37 - CAN network Dyna-VT (hitch)_2/5 with Tier 3/Stage IIIA engine	4-124
4.1.5.93 EFD00131_37 - CAN network Dyna-VT (engine)_3/5 with Tier 3/Stage IIIA engine	4-125
4.1.5.94 EFD00131_37 - CAN network Dyna-VT (isobus)_4/5 with Tier 3/Stage IIIA engine	4-126
4.1.5.95 EFD00131_37 - CAN network Dyna-VT (AGCO Power)_5/5 with Tier 3/Stage IIIA engine	4-127
4.1.5.96 EFD00131_38 - CAN network Dyna-6 (tractor)_1/7 with Tier 3/Stage IIIA engine	4-128
4.1.5.97 EFD00131_38 - CAN network Dyna-6 (engine)_2/7 with Tier 3/Stage IIIA engine	4-129
4.1.5.98 EFD00131_38 - CAN network Dyna-6 (hitch)_3/7 with Tier 3/Stage IIIA engine	4-130
4.1.5.99 EFD00131_38 - CAN network Dyna-6 (isobus)_4/7 with Tier 3/Stage IIIA engine	4-131
4.1.5.100 EFD00131_38 - CAN network Dyna-6 (tractor)_5/7 with Tier 3/Stage IIIA engine	4-132
4.1.5.101 EFD00131_38 - CAN network Dyna-6 (engine)_6/7 with Tier 3/Stage IIIA engine	4-133
4.1.5.102 EFD00131_38 - CAN network Dyna-6 (AGCO Power)_7/7 with Tier 3/Stage IIIA engine	4-134
4.1.5.103 EFD00131_39 - CAN network Dyna-6 (tractor)_1/7 with Tier 4F/Stage IV SCR Technology engine and cab harness ACW039167	4-135
4.1.5.104 EFD00131_39 - CAN network Dyna-6 (engine)_2/7 with Tier 4F/Stage IV SCR Technology engine and cab harness ACW039167	4-136
4.1.5.105 EFD00131_39 - CAN network Dyna-6 (hitch)_3/7 with Tier 4F/Stage IV SCR Technology engine and cab harness ACW039167	4-137
4.1.5.106 EFD00131_39 - CAN network Dyna-6 (isobus)_4/7 with Tier 4F/Stage IV SCR Technology engine and cab harness ACW039167	4-138
4.1.5.107 EFD00131_39 - CAN network Dyna-6 (tractor)_5/7 with Tier 4F/Stage IV SCR Technology engine and cab harness ACW039167	4-139
4.1.5.108 EFD00131_39 - CAN network Dyna-6 (engine)_6/7 with Tier 4F/Stage IV SCR Technology engine and cab harness ACW039167	4-140
4.1.5.109 EFD00131_39 - CAN network Dyna-6 AGCO Power_7/7 with Tier 4F/Stage IV SCR Technology engine and cab harness ACW039167	4-141
4.1.5.110 EFD00131_40 - CAN network Dyna-VT (tractor)_1/5 with Tier 4F/Stage IV SCR Technology engine and cab harness ACW039162	4-142
4.1.5.111 EFD00131_40 - CAN network Dyna-VT (hitch)_2/5 with Tier 4F/Stage IV SCR Technology engine and cab harness ACW039162	4-143
4.1.5.112 EFD00131_40 - CAN network Dyna-VT (engine)_3/5 with Tier 4F/Stage IV SCR Technology engine and cab harness ACW039162	4-144
4.1.5.113 EFD00131_40 - CAN network Dyna-VT (isobus)_4/5 with Tier 4F/Stage IV SCR Technology engine and cab harness ACW039162	4-145
4.1.5.114 EFD00131_40 - CAN network Dyna-VT AGCO Power_5/5 with Tier 4F/Stage IV SCR Technology engine and cab harness ACW039162	4-146
4.1.5.115 EFD00132_7 - Electric rear-view mirrors	4-147
4.1.5.116 EFD00133_7 - Pneumatic seat	4-148
4.1.5.117 EFD00135_11 - Ventilation for tractors with standard roof	4-149
4.1.5.118 EFD00135_12 - Ventilation for tractors with high-visibility roof	4-150
4.1.5.119 EFD00136_59 - EAME direction indicators and hazard warning lights - standard roof	4-151
4.1.5.120 EFD00136_60 - NA direction indicators and hazard warning lights	4-152
4.1.5.121 EFD00136_61 - EAME direction indicators and hazard warning lights - high-visibility roof	4-153
4.1.5.122 EFD00137_23 - Number plate lighting (except Italy)	4-154
4.1.5.123 EFD00137_24 - Italian number plate lighting	4-155
4.1.5.124 EFD00138_35 - NA side lights	4-156

4.1.5.125	EFD00138_42 - EAME side lights	4-157
4.1.5.126	EFD00139_8 - Reversing light Dyna-VT	4-158
4.1.5.127	EFD00139_9 - Reversing light Dyna-6	4-159
4.1.5.128	EFD00139_12 - Reversing light Dyna-4	4-160
4.1.5.129	EFD00140_48 - High beam lamps and low beam lamps on grille and hand rails	4-161
4.1.5.130	EFD00140_49 - High beam lamps and low beam lamps on hand rails	4-162
4.1.5.131	EFD00140_50 - High beam lamps and low beam lamps on grille	4-163
4.1.5.132	EFD00140_51 - High beam lamps and low beam lamps on grille	4-164
4.1.5.133	EFD00141_95 - EAME work lights	4-165
4.1.5.134	EFD00141_96 - NA work lights	4-166
4.1.5.135	EFD00141_97 - Work lights	4-167
4.1.5.136	EFD00142_12 - Brake lights Dyna-VT	4-168
4.1.5.137	EFD00142_13 - Brake lights Dyna-6	4-169
4.1.5.138	EFD00142_14 - Brake lights Dyna-4	4-170
4.1.5.139	EFD00143_27 - Rotary beacon	4-171
4.1.5.140	EFD00144_8 - Control module	4-172
4.1.5.141	EFD00145_13 - NA trailer connector	4-173
4.1.5.142	EFD00145_14 - EAME trailer connector	4-174
4.1.5.143	EFD00146_9 - Automatic air conditioning back-lighting	4-175
4.1.5.144	EFD00146_10 - Manual air conditioning back-lighting	4-176
4.1.5.145	EFD00148_13 - Audible alarm	4-177
4.1.5.146	EFD00149_16 - Battery charge + start-up Tier 4F/Stage IV SCR Technology engine	4-178
4.1.5.147	EFD00149_18 - Battery charge + start-up Tier 3/Stage IIIA engine	4-179
4.1.5.148	EFD00150_10 - Air filter vacuum sensor	4-180
4.1.5.149	EFD00151_26 - EEM unit power supply AGCO Power (44/66/74 AWF engine)	4-181
4.1.5.150	EFD00151_27 - AGCO Power engine electronic injection for Efficient and tractor versions Exclusive (44/66/74 AWF engine)	4-182
4.1.5.151	EFD00151_28 - AGCO Power engine electronic injection for tractor versions Essential (44/66/74 AWF engine)	4-183
4.1.5.152	EFD00151_30 - EEM unit power supply AGCO Power (66/74 CW-3 engine)	4-184
4.1.5.153	EFD00151_31 - AGCO Power engine electronic injection for Efficient and tractor versions Exclusive (66/74 CW-3 engine)	4-185
4.1.5.154	EFD00151_32 - AGCO Power engine electronic injection for tractor versions Essential (66/74 CW-3 engine)	4-186
4.1.5.155	EFD00152_17 - DANA suspended front axle (for MF 7700 models)	4-187
4.1.5.156	EFD00153_19 - Preheating power supply AGCO Power (66/74 AWF engine)	4-188
4.1.5.157	EFD00153_20 - Preheating power supply AGCO Power (66/74 CW-3 and 49AWF engine)	4-189
4.1.5.158	EFD00154_6 - Fuel preheater	4-190
4.1.5.159	EFD00157_6 - Vistronic Tier 4F/Stage IV SCR Technology engine	4-191
4.1.5.160	EFD00157_7 - Vistronic Tier 3/Stage IIIA engine	4-192
4.1.5.161	EFD00159_18 - Hydraulic spool valves Dyna-VT	4-193
4.1.5.162	EFD00159_19 - Hydraulic spool valves Dyna-6	4-194
4.1.5.163	EFD00160_29 - Rear linkage and Dual Control Dyna-VT	4-195
4.1.5.164	EFD00160_30 - GPA20 and GPA40 Dual Control and rear linkage Dyna-6_1/2	4-196
4.1.5.165	EFD00160_30 - GPA20 and GPA40 Dual Control and rear linkage Dyna-6_2/2	4-197
4.1.5.166	EFD00160_31 - Dyna-6 Open Center GPA20 Dual Control and rear linkage	4-198
4.1.5.167	EFD00160_32 - Dyna-4 Load Sensing GPA20 Dual Control and rear linkage	4-199

4.1.5.168	EFD00160_33 - Dyna-4 Open Center GPA20 Dual Control and rear linkage	4-200
4.1.5.169	EFD00161_13 - Front linkage	4-201
4.1.5.170	EFD00162_11 - Dual Control linkage and trailed implements (TIC) Dyna-VT	4-202
4.1.5.171	EFD00162_12 - Dual Control linkage and trailed implements (TIC) Dyna-6	4-203
4.1.5.172	EFD00169_18 - Controller power supply Dyna-VT_1/5	4-204
4.1.5.173	EFD00169_18 - Controller power supply Dyna-VT_2/5	4-205
4.1.5.174	EFD00169_18 - Controller power supply Dyna-VT_3/5	4-206
4.1.5.175	EFD00169_18 - Controller power supply Dyna-VT_4/5	4-207
4.1.5.176	EFD00169_18 - Controller power supply Dyna-VT_5/5	4-208
4.1.5.177	EFD00169_19 - Controller power supply Dyna-6 - Transmission	4-209
4.1.5.178	EFD00169_19 - Controller power supply Dyna-6 - linkage	4-210
4.1.5.179	EFD00169_19 - Controller power supply Dyna-6 - suspended front axle (TECU)	4-211
4.1.5.180	EFD00169_19 - Controller power supply Dyna-6 - Instrument panel	4-212
4.1.5.181	EFD00169_19 - Controller power supply Dyna-6 - Suspended cab	4-213
4.1.5.182	EFD00169_20 - Controller power supply Dyna-4_1/4	4-214
4.1.5.183	EFD00169_20 - Controller power supply Dyna-4_2/4	4-215
4.1.5.184	EFD00169_20 - Controller power supply Dyna-4_3/4	4-216
4.1.5.185	EFD00169_20 - Controller power supply Dyna-4_4/4	4-217
4.1.5.186	EFD00170_3 - High-pressure braking	4-218
4.1.5.187	EFD00172_6 - Front accessory connection socket_1/2	4-219
4.1.5.188	EFD00172_6 - Front accessory connection socket_2/2	4-220
4.1.5.189	EFD00173_7 - Water in fuel sensor of the Tier 4F/Stage IV SCR Technology engine	4-221
4.1.5.190	EFD00173_8 - Water in fuel sensor of the Tier 3/Stage IIIA engine	4-222
4.1.5.191	EFD00174_12 - air brake Dyna-VT_1/2	4-223
4.1.5.192	EFD00174_12 - air brake Dyna-VT_2/2	4-224
4.1.5.193	EFD00174_13 - Dyna-6 GPA40 air brake_1/2	4-225
4.1.5.194	EFD00174_13 - Dyna-6 GPA40 air brake_2/2	4-226
4.1.5.195	EFD00174_14 - GPA20 and GPA50 air brake Dyna-6	4-227
4.1.5.196	EFD00174_15 - GPA20 and GPA50 air brake Dyna-4	4-228
4.1.5.197	EFD00175 - Tier3/Stage IIIA AGCO Power engine_1/3	4-229
4.1.5.198	EFD00175 - Tier3/Stage IIIA AGCO Power engine_2/3	4-230
4.1.5.199	EFD00175 - Tier3/Stage IIIA AGCO Power engine_3/3	4-231
4.1.5.200	EFD00175 - Tier4f/Stage IV AGCO Power engine_1/3	4-232
4.1.5.201	EFD00175 - Tier4f/Stage IV AGCO Power engine_2/3	4-233
4.1.5.202	EFD00175 - Tier4f/Stage IV AGCO Power engine_3/3	4-234
4.1.5.203	EFD00175_9 - SCR Technology	4-235
4.1.5.204	EFD00176 - LoaderALO	4-236
4.1.5.205	EFD00176_14 - front set Dyna-6	4-237
4.1.5.206	EFD00176_15 - ALO loader Dyna-6	4-238
4.1.5.207	EFD00176_16 - front set Dyna-VT	4-239
4.1.5.208	EFD00176_17 - ALO mechanical loader Dyna-4	4-240
4.1.5.209	EFD00178_5 - Steering SpeedSteer	4-241
4.1.5.210	EFD00183_2 - Implement attachment without Isobus	4-242
4.1.5.211	EFD00184_3 - AgCommand™	4-243

5 Harnesses 5-1

5.1 Harnesses 5-7

5.1.1	Identification of harnesses	5-7
5.1.2	Identification table for cable colors	5-10
5.1.3	Harnesses	5-13
5.1.3.1	FAI200 - Engine harness Tier 4 Final/Stage IV - 4387304_1/4	5-13
5.1.3.2	FAI200 - Engine harness Tier 4 Final/Stage IV - 4387304_2/4	5-14
5.1.3.3	FAI200 - Engine harness Tier 4 Final/Stage IV - 4387304_3/4	5-15

5.1.3.4	FAI200 - Engine harness Tier 4 Final/Stage IV - 4387304_4/4	5-16
5.1.3.5	FAI200 - Engine harness - 4392052_1/2	5-17
5.1.3.6	FAI200 - Engine harness - 4392052_2/2	5-18
5.1.3.7	FAI200 - Engine harness Tier 4 Final/Stage IV - ACW028619_1/4	5-19
5.1.3.8	FAI200 - Engine harness Tier 4 Final/Stage IV - ACW028619_2/4	5-20
5.1.3.9	FAI200 - Engine harness Tier 4 Final/Stage IV - ACW028619_3/4	5-21
5.1.3.10	FAI200 - Engine harness Tier 4 Final/Stage IV - ACW028619_4/4	5-22
5.1.3.11	FAI200 - Engine harness Tier 3/Stage IIIA - ACW030920_1/3	5-23
5.1.3.12	FAI200 - Engine harness Tier 3/Stage IIIA - ACW030920_2/3	5-24
5.1.3.13	FAI200 - Engine harness Tier 3/Stage IIIA - ACW030920_3/3	5-25
5.1.3.14	FAI200 - Engine harness cab - ACW0349940_1/2	5-26
5.1.3.15	FAI200 - Engine harness cab - ACW0349940_2/2	5-27
5.1.3.16	FAI201 - Front headlights harness - 4388041_1/2	5-28
5.1.3.17	FAI201 - Front headlights harness - 4388041_2/2	5-29
5.1.3.18	FAI203 - Transmission harness Dyna-4-Dyna-6 GBA2520 - 4390259-1/3	5-30
5.1.3.19	FAI203 - Transmission harness Dyna-4-Dyna-6 GBA2520 - 4390259-2/3	5-31
5.1.3.20	FAI203 - Transmission harness Dyna-4-Dyna-6 GBA2520 - 4390259-3/3	5-32
5.1.3.21	FAI203 - Transmission harness Dyna-6 GTA1540 - ACW016911_1/3	5-33
5.1.3.22	FAI203 - Transmission harness Dyna-6 GTA1540 - ACW016911_2/3	5-34
5.1.3.23	FAI203 - Transmission harness Dyna-6 GTA1540 - ACW016911_3/3	5-35
5.1.3.24	FAI203 - Transmission harness Dyna-VT - ACW016910_1/3	5-36
5.1.3.25	FAI203 - Transmission harness Dyna-VT - ACW016910_2/3	5-37
5.1.3.26	FAI203 - Transmission harness Dyna-VT - ACW016910_3/3	5-38
5.1.3.27	FAI205 - Electrohydraulic valves harness - 4292090	5-39
5.1.3.28	FAI205 - Electrohydraulic valves harness - 4292091	5-40
5.1.3.29	FAI205 - Electrohydraulic valves harness - 4292093	5-41
5.1.3.30	FAI205 - Electrohydraulic valves harness - 4387694	5-42
5.1.3.31	FAI208 - Linkage with Dual Control and TIC harness - 4387797_1/2	5-43
5.1.3.32	FAI208 - Linkage with Dual Control and TIC harness - 4387797_2/2	5-44
5.1.3.33	FAI210 - Cab transmission harness Dyna-VT short console - 4390243_1/9	5-45
5.1.3.34	FAI210 - Cab transmission harness Dyna-VT short console - 4390243_2/9	5-46
5.1.3.35	FAI210 - Cab transmission harness Dyna-VT short console - 4390243_3/9	5-47
5.1.3.36	FAI210 - Cab transmission harness Dyna-VT short console - 4390243_4/9	5-48
5.1.3.37	FAI210 - Cab transmission harness Dyna-VT short console - 4390243_5/9	5-49
5.1.3.38	FAI210 - Cab transmission harness Dyna-VT short console - 4390243_6/9	5-50
5.1.3.39	FAI210 - Cab transmission harness Dyna-VT short console - 4390243_7/9	5-51
5.1.3.40	FAI210 - Cab transmission harness Dyna-VT short console - 4390243_8/9	5-52
5.1.3.41	FAI210 - Cab transmission harness Dyna-VT short console - 4390243_9/9	5-53
5.1.3.42	FAI210 - Cab transmission harness Dyna-VT short console - ACW039162_1/9	5-54
5.1.3.43	FAI210 - Cab transmission harness Dyna-VT short console - ACW039162_2/9	5-55
5.1.3.44	FAI210 - Cab transmission harness Dyna-VT short console - ACW039162_3/9	5-56
5.1.3.45	FAI210 - Cab transmission harness Dyna-VT short console - ACW039162_4/9	5-57
5.1.3.46	FAI210 - Cab transmission harness Dyna-VT short console - ACW039162_5/9	5-58

5.1.3.47	FAI210 - Cab transmission harness Dyna-VT short console -	
ACW039162_6/9		5-59
5.1.3.48	FAI210 - Cab transmission harness Dyna-VT short console -	
ACW039162_7/9		5-60
5.1.3.49	FAI210 - Cab transmission harness Dyna-VT short console -	
ACW039162_8/9		5-61
5.1.3.50	FAI210 - Cab transmission harness Dyna-VT short console -	
ACW039162_9/9		5-62
5.1.3.51	FAI210 - Cab transmission harness Dyna-6 short console -	
ACW005780_1/8		5-63
5.1.3.52	FAI210 - Cab transmission harness Dyna-6 short console -	
ACW005780_2/8		5-64
5.1.3.53	FAI210 - Cab transmission harness Dyna-6 short console -	
ACW005780_3/8		5-65
5.1.3.54	FAI210 - Cab transmission harness Dyna-6 short console -	
ACW005780_4/8		5-66
5.1.3.55	FAI210 - Cab transmission harness Dyna-6 short console -	
ACW005780_5/8		5-67
5.1.3.56	FAI210 - Cab transmission harness Dyna-6 short console -	
ACW005780_6/8		5-68
5.1.3.57	FAI210 - Cab transmission harness Dyna-6 short console -	
ACW005780_7/8		5-69
5.1.3.58	FAI210 - Cab transmission harness Dyna-6 short console -	
ACW005780_8/8		5-70
5.1.3.59	FAI210 - Cab transmission harness Dyna-6 short console -	
ACW039167_1/9		5-71
5.1.3.60	FAI210 - Cab transmission harness Dyna-6 short console -	
ACW039167_2/9		5-72
5.1.3.61	FAI210 - Cab transmission harness Dyna-6 short console -	
ACW039167_3/9		5-73
5.1.3.62	FAI210 - Cab transmission harness Dyna-6 short console -	
ACW039167_4/9		5-74
5.1.3.63	FAI210 - Cab transmission harness Dyna-6 short console -	
ACW039167_5/9		5-75
5.1.3.64	FAI210 - Cab transmission harness Dyna-6 short console -	
ACW039167_6/9		5-76
5.1.3.65	FAI210 - Cab transmission harness Dyna-6 short console -	
ACW039167_7/9		5-77
5.1.3.66	FAI210 - Cab transmission harness Dyna-6 short console -	
ACW039167_8/9		5-78
5.1.3.67	FAI210 - Cab transmission harness Dyna-6 short console -	
ACW039167_9/9		5-79
5.1.3.68	FAI210 - Cab transmission harness Dyna-4 long console -	
ACW017847_1/7		5-80
5.1.3.69	FAI210 - Cab transmission harness Dyna-4 long console -	
ACW017847_2/7		5-81
5.1.3.70	FAI210 - Cab transmission harness Dyna-4 long console -	
ACW017847_3/7		5-82
5.1.3.71	FAI210 - Cab transmission harness Dyna-4 long console -	
ACW017847_4/7		5-83
5.1.3.72	FAI210 - Cab transmission harness Dyna-4 long console -	
ACW017847_5/7		5-84
5.1.3.73	FAI210 - Cab transmission harness Dyna-4 long console -	
ACW017847_6/7		5-85
5.1.3.74	FAI210 - Cab transmission harness Dyna-4 long console -	
ACW017847_7/7		5-86
5.1.3.75	FAI210 - Cab transmission harness Dyna-4 municipal - 4391826_1/8	5-87
5.1.3.76	FAI210 - Cab transmission harness Dyna-4 municipal - 4391826_2/8	5-88

5.1.3.77	FAI210 - Cab transmission harness Dyna-4 municipal - 4391826_3/8 . . .	5-89
5.1.3.78	FAI210 - Cab transmission harness Dyna-4 municipal - 4391826_4/8 . . .	5-90
5.1.3.79	FAI210 - Cab transmission harness Dyna-4 municipal - 4391826_5/8 . . .	5-91
5.1.3.80	FAI210 - Cab transmission harness Dyna-4 municipal - 4391826_6/8 . . .	5-92
5.1.3.81	FAI210 - Cab transmission harness Dyna-4 municipal - 4391826_7/8 . . .	5-93
5.1.3.82	FAI210 - Cab transmission harness Dyna-4 municipal - 4391826_8/8 . . .	5-94
5.1.3.83	FAI210 - Cab transmission harness Dyna-6 municipal - 4392642_1/9 . . .	5-95
5.1.3.84	FAI210 - Cab transmission harness Dyna-6 municipal - 4392642_2/9 . . .	5-96
5.1.3.85	FAI210 - Cab transmission harness Dyna-6 municipal - 4392642_3/9 . . .	5-97
5.1.3.86	FAI210 - Cab transmission harness Dyna-6 municipal - 4392642_4/9 . . .	5-98
5.1.3.87	FAI210 - Cab transmission harness Dyna-6 municipal - 4392642_5/9 . . .	5-99
5.1.3.88	FAI210 - Cab transmission harness Dyna-6 municipal - 4392642_6/9 . . .	5-100
5.1.3.89	FAI210 - Cab transmission harness Dyna-6 municipal - 4392642_7/9 . . .	5-101
5.1.3.90	FAI210 - Cab transmission harness Dyna-6 municipal - 4392642_8/9 . . .	5-102
5.1.3.91	FAI210 - Cab transmission harness Dyna-6 municipal - 4392642_9/9 . . .	5-103
5.1.3.92	FAI210 - Cab transmission harness Dyna-6 long console - ACW005784_1/8	5-104
5.1.3.93	FAI210 - Cab transmission harness Dyna-6 long console - ACW005784_2/8	5-105
5.1.3.94	FAI210 - Cab transmission harness Dyna-6 long console - ACW005784_3/8	5-106
5.1.3.95	FAI210 - Cab transmission harness Dyna-6 long console - ACW005784_4/8	5-107
5.1.3.96	FAI210 - Cab transmission harness Dyna-6 long console - ACW005784_5/8	5-108
5.1.3.97	FAI210 - Cab transmission harness Dyna-6 long console - ACW005784_6/8	5-109
5.1.3.98	FAI210 - Cab transmission harness Dyna-6 long console - ACW005784_7/8	5-110
5.1.3.99	FAI210 - Cab transmission harness Dyna-6 long console - ACW005784_8/8	5-111
5.1.3.100	FAI212 - Lighting harness Municipal cab - 4380685_1/3	5-112
5.1.3.101	FAI212 - Lighting harness Municipal cab - 4380685_2/3	5-113
5.1.3.102	FAI212 - Lighting harness Municipal cab - 4380685_3/3	5-114
5.1.3.103	FAI212 - Lighting harness EAME - 4389032_1/3	5-115
5.1.3.104	FAI212 - Lighting harness EAME - 4389032_2/3	5-116
5.1.3.105	FAI212 - Lighting harness EAME - 4389032_3/3	5-117
5.1.3.106	FAI212 - Lighting harness EAME - ACW039170_1/3	5-118
5.1.3.107	FAI212 - Lighting harness EAME - ACW039170_2/3	5-119
5.1.3.108	FAI212 - Lighting harness EAME - ACW039170_3/3	5-120
5.1.3.109	FAI212 - Lighting harness NA - 4389034_1/3	5-121
5.1.3.110	FAI212 - Lighting harness NA - 4389034_2/3	5-122
5.1.3.111	FAI212 - Lighting harness NA - 4389034_3/3	5-123
5.1.3.112	FAI212 - Lighting harness NA - ACW039182_1/3	5-124
5.1.3.113	FAI212 - Lighting harness NA - ACW039182_2/3	5-125
5.1.3.114	FAI212 - Lighting harness NA - ACW039182_3/3	5-126
5.1.3.115	FAI219 - Cab interior power socket harness - 4290574_1/2	5-127
5.1.3.116	FAI219 - Cab interior power socket harness - 4290574_2/2	5-128
5.1.3.117	FAI219 - Cab interior power socket harness - 4290575_1/2	5-129
5.1.3.118	FAI219 - Cab interior power socket harness - 4290575_2/2	5-130
5.1.3.119	FAI223 - Roof harness - 4353057_1/3	5-131
5.1.3.120	FAI223 - Roof harness - 4353057_2/3	5-132
5.1.3.121	FAI223 - Roof harness - 4353057_3/3	5-133
5.1.3.122	FAI223 - Roof harness_High visibility - 4375395_1/3	5-134
5.1.3.123	FAI223 - Roof harness_High visibility_4375395_2/3	5-135
5.1.3.124	FAI223 - Roof harness_High visibility_4375395_3/3	5-136
5.1.3.125	FAI223 - Roof harness_High-visibility_municipal_cab_4381001_1/3 . . .	5-137
5.1.3.126	FAI223 - Roof harness_High-visibility_municipal_cab_4381001_2/3 . . .	5-138

5.1.3.127	FAI223 - Roof harness_High-visibility_municipal_cab_4381001_3/3 . . .	5-139
5.1.3.128	FAI223 - Roof harness_standard_municipal_cab_ACW001936_1/3 . . .	5-140
5.1.3.129	FAI223 - Roof harness_standard_municipal_cab_ACW001936_2/3 . . .	5-141
5.1.3.130	FAI223 - Roof harness_standard_municipal_cab_ACW001936_3/3 . . .	5-142
5.1.3.131	FAI224 - Hand rail lighting harness - 4390262_1/2	5-143
5.1.3.132	FAI224 - Hand rail lighting harness - 4390262_2/2	5-144
5.1.3.133	FAI225 - Electric rear-view mirror harness 4352622_1/2	5-145
5.1.3.134	FAI225 - Electric rear-view mirror harness 4352622_2/2	5-146
5.1.3.135	FAI227 - Automatic air conditioning harness - roof - 4352621_1/3 . . .	5-147
5.1.3.136	FAI227 - Automatic air conditioning harness - roof - 4352621_2/3 . . .	5-148
5.1.3.137	FAI227 - Automatic air conditioning harness - roof - 4352621_3/3 . . .	5-149
5.1.3.138	FAI228 - Number plate lighting harness - 4353107_1/2	5-150
5.1.3.139	FAI228 - Number plate lighting harness - 4353107_2/2	5-151
5.1.3.140	FAI228 - Number plate lighting harness - 4357222_1/2	5-152
5.1.3.141	FAI228 - Number plate lighting harness - 4357222_2/2	5-153
5.1.3.142	FAI231 - Transmission harness - ParkLock Dyna-6 - 4353255_1/2 . . .	5-154
5.1.3.143	FAI231 - Transmission harness - ParkLock Dyna-6 - 4353255_2/2 . . .	5-155
5.1.3.144	FAI231 - Transmission harness - ParkLock Dyna-VT - 4390010_1/2 . . .	5-156
5.1.3.145	FAI231 - Transmission harness - ParkLock Dyna-VT - 4390010_2/2 . . .	5-157
5.1.3.146	FAI245 - Left-hand linkage external controls harness - 4348463_1/2 . . .	5-158
5.1.3.147	FAI245 - Left-hand linkage external controls harness - 4348463_2/2 . . .	5-159
5.1.3.148	FAI253 - Hand rail harness - 4390260_1/2	5-160
5.1.3.149	FAI253 - Hand rail harness - 4390260_2/2	5-161
5.1.3.150	FAI260 - Cooling unit harness - 4350584_1/2	5-162
5.1.3.151	FAI260 - Cooling unit harness - 4350584_2/2	5-163
5.1.3.152	FAI261 - Isobus harness - 4353130_1/2	5-164
5.1.3.153	FAI261 - Isobus harness - 4353130_2/2	5-165
5.1.3.154	FAI262 - Auto-Guide™ engine harness - 4296810_1/2	5-166
5.1.3.155	FAI262 - Auto-Guide™ engine harness - 4296810_2/2	5-167
5.1.3.156	FAI263 - Auto-Guide™ cab adapter harness - 4353936_1/2	5-168
5.1.3.157	FAI263 - Auto-Guide™ cab adapter harness - 4353936_2/2	5-169
5.1.3.158	FAI265 - Pneumatic braking harness Dyna-6 - ACW016913_1/2	5-170
5.1.3.159	FAI265 - Pneumatic braking harness Dyna-6 - ACW016913_2/2	5-171
5.1.3.160	FAI265 - Pneumatic braking harness Dyna-VT - ACW016912_1/2	5-172
5.1.3.161	FAI265 - Pneumatic braking harness Dyna-VT - ACW016912_2/2	5-173
5.1.3.162	FAI265 - Pneumatic braking harness Dyna-6- ACW034317_1/2	5-174
5.1.3.163	FAI265 - Pneumatic braking harness Dyna-6- ACW034317_2/2	5-175
5.1.3.164	FAI268 - Front function harness EAME - 4387691_1/3	5-176
5.1.3.165	FAI268 - Front function harness EAME - 4387691_2/3	5-177
5.1.3.166	FAI268 - Front function harness EAME - 4387691_3/3	5-178
5.1.3.167	FAI268 - Front function harness - 4387692_1/2	5-179
5.1.3.168	FAI268 - Front function harness - 4387692_2/2	5-180
5.1.3.169	FAI268 - Front function harness - 4387693_1/2	5-181
5.1.3.170	FAI268 - Front function harness - 4387693_2/2	5-182
5.1.3.171	FAI268 - Front function harness - ACW104554_1/2	5-183
5.1.3.172	FAI268 - Front function harness - ACW104554_2/2	5-184
5.1.3.173	FAI268 - Front function harness - ACW104555_1/2	5-185
5.1.3.174	FAI268 - Front function harness - ACW104555_2/2	5-186
5.1.3.175	FAI272 - Suspended cab harness Dyna-6 - ACW039185_1/2	5-187
5.1.3.176	FAI272 - Suspended cab harness Dyna-6 - ACW039185_2/2	5-188
5.1.3.177	FAI272 - Suspended cab harness Dyna-VT - ACW060395_1/2	5-189
5.1.3.178	FAI272 - Suspended cab harness Dyna-VT - ACW060395_2/2	5-190
5.1.3.179	FAI279 - Adapter harness - 4376780_1/2	5-191
5.1.3.180	FAI279 - Adapter harness - 4376780_2/2	5-192
5.1.3.181	FAI283 - TopDock harness - 4377536_1/2	5-193
5.1.3.182	FAI283 - TopDock harness - 4377536_2/2	5-194
5.1.3.183	FAI287 - ALO loader harness - 4378879_1/2	5-195
5.1.3.184	FAI287 - ALO loader harness - 4378879_2/2	5-196

5.1.3.185	FAI289 - Virtual terminal harness - 4353638_1/2	5-197
5.1.3.186	FAI289 - Virtual terminal harness - 4353638_2/2	5-198
5.1.3.187	FAI290 - Non-Isobus implement connector harness - 4296266_1/2	5-199
5.1.3.188	FAI290 - Non-Isobus implement connector harness - 4296266_2/2	5-200
5.1.3.189	FAI290 - Non-Isobus implement connector harness- 1/2	5-201
5.1.3.190	FAI290 - Non-Isobus implement connector harness- 2/2	5-202
5.1.3.191	FAI292 - NA indicator harness - 4355519_1/2	5-203
5.1.3.192	FAI292 - NA indicator harness - 4355519_2/2	5-204
5.1.3.193	FAI292 - NA indicator harness - 4350987	5-205
5.1.3.194	FAI293 - EAME indicator harness - 4355520_1/2	5-206
5.1.3.195	FAI293 - EAME indicator harness - 4355520_2/2	5-207
5.1.3.196	FAI293 - EAME indicator harness - 4350988	5-208
5.1.3.197	FAI294 - Additional heater harness - 4299327_1/2	5-209
5.1.3.198	FAI294 - Additional heater harness - 4299327_2/2	5-210
5.1.3.199	FAI299 - Battery isolator harness - 4387426_1/2	5-211
5.1.3.200	FAI299 - Battery isolator harness - 4387426_2/2	5-212
5.1.3.201	FAI299 - Battery isolator harness - ACW028832_1/2	5-213
5.1.3.202	FAI299 - Battery isolator harness - ACW028832_2/2	5-214
5.1.3.203	FAI300 - Air conditioning shunt harness - 4353106	5-215
5.1.3.204	FAI306 - Topcon harness - 4376705_1/2	5-216
5.1.3.205	FAI306 - Topcon harness - 4376705_2/2	5-217
5.1.3.206	FAI307 - Datatronic 4 harness - 4390934_1/2	5-218
5.1.3.207	FAI307 - Datatronic 4 harness - 4390934_2/2	5-219
5.1.3.208	FAI310 - Battery/battery isolator negative cable harness - 4389477	5-220
5.1.3.209	FAI311 - Battery/starter positive cable harness - ACW024867	5-221
5.1.3.210	FAI312 - Cab/starter negative cable harness - ACW024869	5-222
5.1.3.211	FAI313 - Cab/battery isolator negative cable harness - 4389475	5-223
5.1.3.212	FAI314 - Alternator harness - 4388664_1/2	5-224
5.1.3.213	FAI314 - Alternator harness - 4388664_2/2	5-225
5.1.3.214	FAI314 - Alternator harness- 4390365_1/2	5-226
5.1.3.215	FAI314 - Alternator harness- 4390365_2/2	5-227
5.1.3.216	FAI314 - Alternator harness- 4390055_1/2	5-228
5.1.3.217	FAI314 - Alternator harness- 4390055_2/2	5-229
5.1.3.218	FAI314 - Alternator harness (right-hand) - ACW031995_1/2	5-230
5.1.3.219	FAI314 - Alternator harness (right-hand) - ACW031995_2/2	5-231
5.1.3.220	FAI317 - Vistronic harness - 4392053_1/2	5-232
5.1.3.221	FAI317 - Vistronic harness - 4392053_2/2	5-233
5.1.3.222	FAI321 - GSPTO harness - ACW008066_1/2	5-234
5.1.3.223	FAI321 - GSPTO harness - ACW008066_2/2	5-235
5.1.3.224	FAI323 - Hydraulic safety harness Load Sensing - 4355616_1/2	5-236
5.1.3.225	FAI323 - Hydraulic safety harness Load Sensing - 4355616_2/2	5-237
5.1.3.226	FAI324 - Open Center hydraulic safety harness - 4355617_1/2	5-238
5.1.3.227	FAI324 - Open Center hydraulic safety harness - 4355617_2/2	5-239
5.1.3.228	FAI325 - Power take-off electric selector harness 2 speeds - 4388702_1/2	5-240
5.1.3.229	FAI325 - Power take-off electric selector harness 2 speeds - 4388702_2/2	5-241
5.1.3.230	FAI325 - Power take-off electric selector harness 3 speeds - 4388703_1/2	5-242
5.1.3.231	FAI325 - Power take-off electric selector harness 3 speeds - 4388703_2/2	5-243
5.1.3.232	FAI340 - Battery/fuse box positive cable harness - 4347791_1/2	5-244
5.1.3.233	FAI340 - Battery/fuse box positive cable harness - 4347791_2/2	5-245
5.1.3.234	FAI340 - Battery/fuse box positive cable harness - ACW029172	5-246
5.1.3.235	FAI354 - External loader harness - 4374651_1/2	5-247
5.1.3.236	FAI354 - External loader harness - 4374651_2/2	5-248
5.1.3.237	FAI354 - External loader harness - 4378794_1/2	5-249
5.1.3.238	FAI354 - External loader harness - 4378794_2/2	5-250

5.1.3.239	FAI355 - Harness for the left-hand alternator and for the grid heater - 4387305_1/2	5-251
5.1.3.240	FAI355 - Harness for the left-hand alternator and for the grid heater - 4387305_2/2	5-252
5.1.3.241	FAI355 - Harness for the left-hand alternator and for the grid heater - ACW031997_1/2	5-253
5.1.3.242	FAI355 - Harness for the left-hand alternator and for the grid heater - ACW031997_2/2	5-254
5.1.3.243	FAI355 - Harness for the left-hand alternator and for the grid heater - ACW031999	5-255
5.1.3.244	FAI360 - TopDock harness - 4377537-1/2	5-256
5.1.3.245	FAI360 - TopDock harness - 4377537-2/2	5-257
5.1.3.246	FAI361 - Adapter harness for wheel angle sensor - 4392928	5-258
5.1.3.247	FAI364 - Adapter harness for suspended front axle position sensor - 4391131-1/2	5-259
5.1.3.248	FAI364 - Adapter harness for suspended front axle position sensor - 4391131-2/2	5-260

6 Hydraulics diagrams 6-1

6.1 Hydraulics diagrams 6-3

6.1.1	Hydraulics diagrams	6-5
6.1.1.1	HFD01021 – Auxiliary hydraulics diagram with all options -ML140	6-5
6.1.1.2	HFD01021 – Auxiliary hydraulics diagram with all options - ML180	6-6
6.1.1.3	HFD01022 - Standard auxiliary hydraulics diagram ML180/ML140	6-7
6.1.1.4	HFD01027 - Auxiliary hydraulics diagram with all options, GTA1540	6-8
6.1.1.5	HFD01028 - Standard auxiliary hydraulics diagram, GTA1540	6-9
6.1.1.6	HFD01031 - Hydraulics diagram with all options, GTA2520 Open Center 57 L/min	6-10
6.1.1.7	HFD01032 - Standard hydraulics diagram, GTA2520 Open Center 57 L/min	6-11
6.1.1.8	HFD01033 - Hydraulics diagram with all options, GTA2520 Open Center 100 L/min	6-12
6.1.1.9	HFD01034 - Standard hydraulics diagram, GTA2520 Open Center 100 L/min	6-13
6.1.1.10	HFD01046 - Hydraulics diagram with all options, GTA2520 Load Sensing	6-14
6.1.1.11	HFD01047 - Standard hydraulics diagram, GTA2520 Load Sensing	6-15
6.1.1.12	HFD02009 - ML180/ML140 Auto-Guide™/SpeedSteer steering system hydraulics diagram	6-16
6.1.1.13	HFD02010 – ML140/ML180 standard steering system hydraulics diagram	6-17
6.1.1.14	HFD03039 - Hydraulics diagram: ML180 brake system with trailer brake and ParkLock	6-18
6.1.1.15	HFD03040 - Hydraulics diagram: ML180/ML140 brake system with trailer air brake	6-19
6.1.1.16	HFD03041 - Hydraulics diagram: ML180/ML140 brake system without trailer brake	6-20
6.1.1.17	HFD03042 - Hydraulics diagram: GTA1540 high-pressure braking with Auto-Guide™ steering and pneumatic trailer brake	6-21
6.1.1.18	HFD03043 - Hydraulics diagram: GTA1540 high pressure braking with trailer brake	6-22
6.1.1.19	HFD03044 - Hydraulics diagram: GTA1540 assisted braking with Auto-Guide™ steering and pneumatic trailer brake	6-23
6.1.1.20	HFD03045 - Hydraulics diagram: GTA1540 assisted braking with trailer brake	6-24
6.1.1.21	HFD03046 - GTA1540 high-pressure braking with Auto-Guide™ steering hydraulics diagram	6-25
6.1.1.22	HFD03047 - Hydraulics diagram: GTA1540 high pressure braking	6-26

6.1.1.23	HFD03048 - Hydraulics diagram: GTA1540 assisted braking with Auto-Guide™	6-27
6.1.1.24	HFD03049 - Hydraulics diagram: GTA1540 assisted braking	6-28
6.1.1.25	HFD03050 - Hydraulics diagram: GTA1540 ParkLock	6-29
6.1.1.26	HFD03051 - Hydraulics diagram: GTA2520 Open Center 57 L/min assisted braking with front axle suspension and trailer brake	6-30
6.1.1.27	HFD03052 - Hydraulics diagram: GTA2520 Open Center 57 L/min assisted braking	6-31
6.1.1.28	HFD03053 - Hydraulics diagram: GTA2520 Open Center 57 L/min high pressure braking with trailer brake and front axle suspension	6-32
6.1.1.29	HFD03054 - Hydraulics diagram: GTA2520 Open Center 57 L/min high pressure braking with front axle suspension	6-33
6.1.1.30	HFD03055 - Hydraulics diagram: GTA2520 Open Center 100 L/min assisted braking with trailer brake and front axle suspension	6-34
6.1.1.31	HFD03056 - Hydraulics diagram: GTA2520 Open Center 100 L/min assisted braking	6-35
6.1.1.32	HFD03057 - Hydraulics diagram: GTA2520 Open Center 100 L/min high pressure braking with trailer brake and front axle suspension	6-36
6.1.1.33	HFD03058 - Hydraulics diagram: GTA2520 Open Center 100 L/min high pressure braking with front axle suspension	6-37
6.1.1.34	HFD03059 - Hydraulics diagram: GTA2520 Load Sensing high-pressure braking with pneumatic trailer brake and Auto-Guide™ steering	6-38
6.1.1.35	HFD03060 - Hydraulics diagram: GTA2520 Load Sensing high pressure braking with trailer air brake	6-39
6.1.1.36	HFD03061 - Hydraulics diagram: GTA2520 Load Sensing assisted braking with pneumatic trailer brake and Auto-Guide™ steering	6-40
6.1.1.37	HFD03062 - Hydraulics diagram: GTA2520 Load Sensing assisted braking with trailer air brake	6-41
6.1.1.38	HFD03063 - Hydraulics diagram: GTA2520 Load Sensing high-pressure braking and Auto-Guide™ steering	6-42
6.1.1.39	HFD03064 - Hydraulics diagram: GTA2520 Load Sensing high pressure braking	6-43
6.1.1.40	HFD03065 - Hydraulics diagram: GTA2520 Load Sensing assisted braking and Auto-Guide™ steering	6-44
6.1.1.41	HFD03066 - Hydraulics diagram: GTA2520 Load Sensing assisted braking	6-45
6.1.1.42	HFD04004 – ML140/ML180 rear linkage hydraulics diagram	6-46
6.1.1.43	HFD04006 – GTA1540 rear linkage hydraulics diagram	6-47
6.1.1.44	HFD05004 – ML140/ML180 front linkage hydraulics diagram	6-48
6.1.1.45	HFD05006 - Hydraulics diagram: GTA1540 front linkage with spool valves	6-49
6.1.1.46	HFD05007 – GTA1540 front linkage hydraulics diagram	6-50
6.1.1.47	HFD05008 - Hydraulics diagram: GTA2520 Load Sensing front linkage and front spool valves with front set	6-51
6.1.1.48	HFD05009 - Hydraulics diagram: GTA2520 Load Sensing front linkage without front set	6-52
6.1.1.49	HFD06006 - Hydraulics diagram: ML180/ML140 auxiliary electrohydraulic spool valves	6-53
6.1.1.50	HFD06008 - Hydraulics diagram: GTA1540 auxiliary mechanical spool valves	6-54
6.1.1.51	HFD06009 - Hydraulics diagram: ML180/ML140 auxiliary electrohydraulic and mechanical spool valves	6-55
6.1.1.52	HFD06010 - Hydraulics diagram: GTA1540 auxiliary electrohydraulic and mechanical spool valves	6-56
6.1.1.53	HFD06011 - GTA1540 auxiliary electrohydraulic spool valves	6-57
6.1.1.54	HFD06012 - Hydraulics diagram: GTA2520 Load Sensing rear spool valves, four mechanical and Power Beyond	6-58

6.1.1.55	HFD06013 - Hydraulics diagram: GTA2520 Load Sensing rear spool valves, two mechanical and two electrohydraulic	6-59
6.1.1.56	HFD06014 - Hydraulics diagram: GTA2520 Load Sensing rear spool valves, four electrohydraulic and Power Beyond	6-60
6.1.1.57	HFD07004 - ML140/ML180 auto-hitch hydraulics diagram	6-61
6.1.1.58	HFD07006 - GTA1540 auto-hitch hydraulics diagram	6-62
6.1.1.59	HFD08004 - Hydraulics diagram: ML180 suspended front axle	6-63
6.1.1.60	HFD08006 - Hydraulics diagram: GTA1540 suspended front axle	6-64
6.1.1.61	HFD10000_1 - ALO loader hydraulics diagram	6-65
6.1.1.62	HFD10009 - Hydraulics diagram: ML140/ML180 tractor with loader	6-66
6.1.1.63	HFD10013 - Hydraulics diagram: GTA1540 tractor with loader	6-67
6.1.1.64	HFD10014 - Hydraulics diagram: GTA2520 Load Sensing loader with front set	6-68
6.1.1.65	HFD10015 - Hydraulics diagram: GTA2520 Load Sensing loader without front set	6-69
6.1.1.66	Transmission hydraulics diagram	6-70
7	Pneumatic diagrams	7-1
7.1	Pneumatic diagrams	7-3
7.1.1	Pneumatic diagrams	7-5
7.1.1.1	PFD01015 - GPA40/ML140/ML180 pneumatic trailer braking	7-5
7.1.1.2	PFD01016 - GPA20 pneumatic trailer braking	7-6
8	Adjustments, bleeding and calibrations	8-1
8.1	Bleeding	8-3
8.1.1	Bleeding: Dyna-VT - Assisted brake master cylinders	8-3
8.1.1.1	Charge connector	8-3
8.1.1.2	Pressure connector	8-3
8.1.1.3	Bleed screw locations	8-3
8.1.1.4	Procedure for bleeding the assisted braking system	8-4
8.1.2	Bleeding: Dyna-4/Dyna-6 - Assisted brake master cylinders	8-6
8.1.2.1	Charge connector	8-6
8.1.2.2	Pressure connector - Load Sensing system	8-6
8.1.2.3	Pressure connector - Open Center system	8-7
8.1.2.4	Bleed screw locations	8-7
8.1.2.5	Procedure for bleeding the assisted braking system	8-8
8.1.3	Bleeding: Dyna-4/Dyna-6 - High-pressure braking	8-10
8.1.3.1	Bleed screw locations	8-10
8.1.3.2	Procedure for bleeding the high-pressure braking system	8-12
8.2	Calibrations	8-14
8.2.1	Calibration of the clutch pedal sensor	8-14
8.2.2	Calibration of the throttle pedal sensor	8-14
8.2.3	Calibrating the rear linkage	8-15
8.2.4	Calibration of the front linkage position sensor	8-17
8.2.5	Calibrate the suspended front axle.	8-18
8.2.6	Calibrating the automatic disengagement of the differential and 4-wheel drive	8-19
8.2.7	Calibration of the forward-travel lever	8-21
8.2.8	Forward speed calibration	8-23
8.2.9	Front power take-off calibration for Dyna-4/Dyna-6	8-24
8.2.10	Calibration of the Dyna-4 and Dyna-6 PowerShuttle transmission	8-25
8.2.11	Calibrating the power sensor on the Dyna-6 transmission	8-28
8.2.12	Dyna-VT transmission calibrations: Introduction and access to calibration using the instrument panel	8-29
8.2.13	Calibration of the high/low speed ranges (Hare/Tortoise) for Dyna-VT	8-30
8.2.14	Dyna-VT transmission calibration	8-31
8.2.15	Calibration of the Dyna-VT coupler function	8-32
8.2.16	Rear power take-off calibration for Dyna-VT	8-33

8.2.17	Front power take-off calibration for Dyna-VT	8-34
8.2.18	Dyna-VT transmission calibration error code	8-35
8.2.19	Calibrations to be carried out using the diagnostic tool	8-38
8.2.19.1	Calibrating the forward travel lever on the armrest	8-38
8.2.19.2	Calibration of the FingerTIP controls on the armrest	8-40
8.2.19.3	Calibration of the FingerTIPs on the console	8-43
8.2.19.4	Joystick calibration	8-47
8.2.19.5	Calibrating the forward travel lever on the armrest	8-49
8.2.19.6	Calibrating the hand throttle.	8-52
8.2.19.7	Calibrating the depth control thumb wheel	8-54

Thank you so much for reading.
Please click the “Buy Now!”
button below to download the
complete manual.



After you pay.

You can download the most
perfect and complete manual in
the world immediately.

Our support email:

ebooklibonline@outlook.com