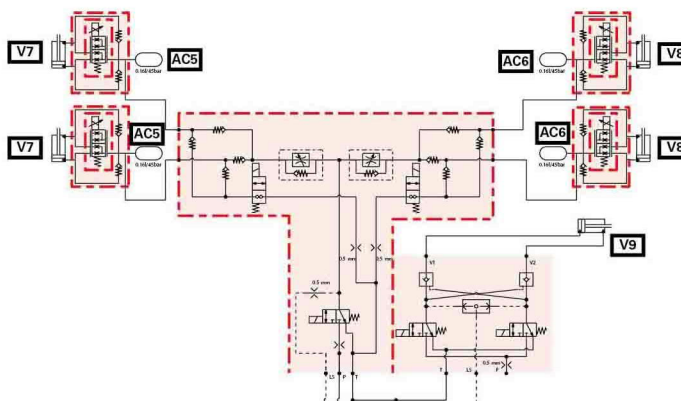
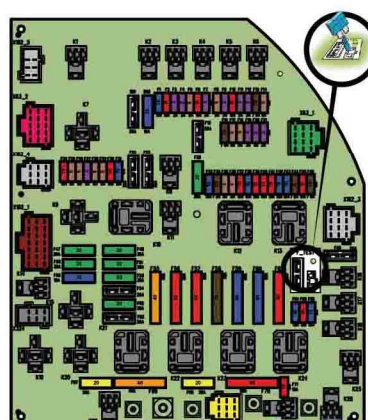


Technician Service Book - series tractors MF 6700 S

Schémas électriques et hydrauliques



Technician Service Book - series tractors MF 6700 S

1 General	1-1
1.1 General specifications	1-3
1.1.1 tractors MF 6700 SDyna-4	1-3
1.1.2 Tractors MF 6700 SDyna-6	1-11
1.1.3 MF 6700 S Dyna-VT tractors	1-20
1.2 Forward speeds	1-30
1.2.1 Forward speed with Dyna-4 40 kph transmission and 18.4R38 tires	1-30
1.2.2 Forward speed with Dyna-4 40 kph transmission and 20.8R38 tires	1-30
1.2.3 Forward speed with Dyna-6 40 kph ECO transmission and 20.8R38 tires	1-32
1.2.4 Forward speed with Dyna-6 50 kph transmission and 20.8R38 tires	1-33
1.2.5 Forward speed for all models with transmission in Dyna-VT mode	1-35
1.3 Dimensions and weights	1-37
1.3.1 Dimensions and weights	1-37
1.4 Attachment points	1-41
1.4.1 Attachment points: MF 6712 S / MF 6713 S / MF 6714 S Dyna-4/Dyna-6 models without front linkage	1-41
1.4.2 Attachment points: MF 6712 S / MF 6713 S / MF 6714 S Dyna-4/Dyna-6 models with front linkage	1-43
1.4.3 Attachment points: MF 6715 S / MF 6716 S / MF 6718 S Dyna-4/Dyna-6 models without front linkage	1-45
1.4.4 Attachment points: MF 6715 S / MF 6716 S / MF 6718 S Dyna-4/Dyna-6 models with front linkage	1-47
1.4.5 Attachment points: MF 6713 S / MF 6714 S / MF 6715 S / MF 6716 S / MF 6718 S Dyna-VT models without front linkage:	1-49
1.4.6 Attachment points: MF 6713 S / MF 6714 S / MF 6715 S / MF 6716 S / MF 6718 S Dyna-VT models with front linkage	1-51
1.5 Capacities	1-53
1.5.1 Capacities	1-53
1.6 Tightening torques, retaining compounds and sealing products	1-55
1.6.1 Retaining compounds and sealing products	1-55
1.6.2 Tightening torques for screws and nuts	1-56
1.6.3 Tightening torques for hydraulic unions	1-60
1.7 Units of measurement	1-64
1.7.1 Conversion table	1-64
2 Error codes	2-1
2.1 Error codes	2-3
2.1.1 General table of faults	2-3
2.1.2 Indicator light panel	2-6
2.1.3 Indication of faults	2-13
2.1.4 Description of error code format	2-16
2.1.5 Instrument panel error codes Dyna-VT	2-17
2.1.6 Instrument panel error codes Dyna-4/Dyna-6	2-18
2.1.7 AGCO Power Tier 3/Stage IIIA engine and Tier 4F/Stage IV SCR Technology engine error codes	2-19
2.1.8 Dyna-VT transmission error codes	2-35
2.1.9 Transmission error codes Dyna-4/Dyna-6	2-38
2.1.10 Front axle error codes Dyna-VT	2-40
2.1.11 Front axle error codes for Dyna-4/Dyna-6	2-41

2.1.12	Rear power take-off error codes Dyna-VT	2-41
2.1.13	Power take-off error codes Dyna-4/Dyna-6	2-43
2.1.14	Error codes for the high-pressure braking	2-44
2.1.15	Rear linkage error codes	2-44
2.1.16	Front power lift error codes	2-46
2.1.17	Armrest error codes	2-46
2.1.18	Hydraulic valve error codes	2-47
2.1.19	Air conditioning error codes	2-49
2.1.20	Error codes of the keypad in the pillar	2-50
2.1.21	Suspended cab error codes	2-51
3	Fuse box	3-1
3.1	Fuse box	3-3
3.1.1	Description of the main fuse box	3-3
3.1.2	Description of the secondary fuse box (depending on model)	3-21
3.1.3	Description of additional fuses specific to the panoramic cab	3-25
3.1.4	Battery isolator	3-27
4	Electrical diagrams	4-1
4.1	Electrical diagrams	4-7
4.1.1	Identification of electrical diagrams	4-7
4.1.2	Identification of electrical connectors from X1 to X500	4-9
4.1.3	Identification of electrical connectors from X501 to X1000	4-21
4.1.4	Identification table for cable colors	4-30
4.1.5	Electrical diagrams	4-33
4.1.5.1	EFD00000_16 - Battery 12 V power supply points	4-33
4.1.5.2	EFD00000_17 - Battery earth points	4-34
4.1.5.3	EFD00100_17 - 4-wheel drive Dyna-VT	4-36
4.1.5.4	EFD00100_18 - 4-wheel drive Dyna-6	4-37
4.1.5.5	EFD00100_19 - 4-wheel drive Dyna-4	4-37
4.1.5.6	EFD00101_17 - Differential lock Dyna-VT	4-38
4.1.5.7	EFD00101_18 - Differential lock Dyna-6	4-39
4.1.5.8	EFD00101_19 - Differential lock Dyna-4	4-40
4.1.5.9	EFD00106_28 - rear power take-off Dyna-VT	4-41
4.1.5.10	EFD00106_32 - GPA20 mechanical-control rear power take-off Dyna-6	4-42
4.1.5.11	EFD00106_33 - GPA20 electrohydraulic-control rear power take-off Dyna-6	4-43
4.1.5.12	EFD00106_34 - GPA20 mechanical-control rear power take-off Dyna-4	4-44
4.1.5.13	EFD00106_35 - GPA20 electrohydraulic-control rear power take-off Dyna-4	4-45
4.1.5.14	EFD00107_11 - front power take-off Dyna-VT	4-46
4.1.5.15	EFD00107_12 - front power take-off Dyna-6	4-47
4.1.5.16	EFD00107_13 - front power take-off Dyna-4	4-48
4.1.5.17	EFD00111_31 - transmission Dyna-VT_1/2	4-49
4.1.5.18	EFD00111_31 - transmission Dyna-VT_2/2	4-50
4.1.5.19	EFD00111_33 - GTA2520 transmission Dyna-6 Load Sensing_1/4	4-51
4.1.5.20	EFD00111_33 - GTA2520 transmission Dyna-6 Load Sensing_2/4	4-52
4.1.5.21	EFD00111_33 - GTA2520 transmission Dyna-6 Load Sensing_3/4	4-53
4.1.5.22	EFD00111_33 - GTA2520 transmission Dyna-6 Load Sensing_4/4	4-54
4.1.5.23	EFD00111_34 - GTA2520 Dyna-6 Open Center transmission_1/4	4-55
4.1.5.24	EFD00111_34 - GTA2520 Dyna-6 Open Center transmission_2/4	4-56
4.1.5.25	EFD00111_34 - GTA2520 Dyna-6 Open Center transmission_3/4	4-57
4.1.5.26	EFD00111_34 - GTA2520 Dyna-6 Open Center transmission_4/4	4-58
4.1.5.27	EFD00111_35 - GTA2520 transmission Dyna-4 Load Sensing_1/2	4-59
4.1.5.28	EFD00111_35 - GTA2520 transmission Dyna-4 Load Sensing_2/2	4-60
4.1.5.29	EFD00111_36 - GTA2520 Dyna-4 Open Center transmission_1/2	4-61
4.1.5.30	EFD00111_36 - GTA2520 Dyna-4 Open Center transmission_2/2	4-62
4.1.5.31	EFD00113_7 - Cigarette lighter	4-63

4.1.5.32	EFD00114_30 - Radio	4-64
4.1.5.33	EFD00116_12 - Suspended cab	4-65
4.1.5.34	EFD00117_28 - Additional heater	4-66
4.1.5.35	EFD00117_39 - Automatic air conditioning	4-67
4.1.5.36	EFD00117_40 - Manual air conditioning for standard roof	4-68
4.1.5.37	EFD00117_41 - Manual air conditioning for high-visibility roof	4-69
4.1.5.38	EFD00118_9 - DOT Matrix	4-70
4.1.5.39	EFD00119_10 - Rear windscreen wiper	4-71
4.1.5.40	EFD00119_11 - Rear windscreen wiper for tractors with panoramic cab	4-72
4.1.5.41	EFD00120_12 - Front windscreen wiper	4-73
4.1.5.42	EFD00121_9 - parking brake Dyna-VT	4-74
4.1.5.43	EFD00121_10 - parking brake Dyna-6	4-75
4.1.5.44	EFD00121_11 - parking brake Dyna-4	4-76
4.1.5.45	EFD00122_8 - fuel gage Dyna-VT	4-77
4.1.5.46	EFD00122_9 - Dyna-4/ fuel gage Dyna-6	4-78
4.1.5.47	EFD00123 - C3000	4-79
4.1.5.48	EFD00123_24 - Datatronic CCD	4-80
4.1.5.49	EFD00123_25 - Isobus	4-81
4.1.5.50	EFD00123_30 - Auto-Guide™	4-82
4.1.5.51	EFD00125_10 - Cab light	4-83
4.1.5.52	EFD00126_11 - Extreme cold weather heating with automatic air conditioning	4-84
4.1.5.53	EFD00126_12 - Extreme cold weather heating with manual air conditioning for tractors with standard roof	4-85
4.1.5.54	EFD00126_13 - Extreme cold weather heating with manual air conditioning for tractors with high-visibility roof	4-86
4.1.5.55	EFD00127_8 - Left-hand pillar 12 V socket	4-87
4.1.5.56	EFD00128_17 - EAME/ISO cab power socket	4-88
4.1.5.57	EFD00128_18 - NA/SAE cab power socket	4-89
4.1.5.58	EFD00128_20 - EAME/ISO cab power socket_1/2	4-90
4.1.5.59	EFD00128_20 - EAME/ISO cab power socket_2/2	4-91
4.1.5.60	EFD00128_21 - NA/SAE cab power socket_1/2	4-92
4.1.5.61	EFD00128_21 - NA/SAE cab power socket_2/2	4-93
4.1.5.62	EFD00129_12 - Diagnostics connector_1/2	4-94
4.1.5.63	EFD00129_12 - Diagnostics connector_2/2	4-95
4.1.5.64	EFD00129_13 - Diagnostics connector_1/2 with cab harnesses ACW039162 and ACW039167	4-97
4.1.5.65	EFD00129_13 - Diagnostics connector_2/2 with cab harnesses ACW039162 and ACW039167	4-97
4.1.5.66	EFD00130_5 - radar Dyna-VT	4-99
4.1.5.67	EFD00130_6 - Dyna-6 and radar Dyna-4	4-99
4.1.5.68	EFD00131_34 - CAN network Dyna-VT (tractor)_1/5 with Tier 4F/Stage IV SCR Technology engine and cab harness 4990243	4-100
4.1.5.69	EFD00131_34 - CAN network Dyna-VT (hitch)_2/5 with Tier 4F/Stage IV SCR Technology engine and cab harness 4990243	4-101
4.1.5.70	EFD00131_34 - CAN network Dyna-VT (engine)_3/5 with Tier 4F/Stage IV SCR Technology engine and cab harness 4990243	4-102
4.1.5.71	EFD00131_34 - CAN network Dyna-VT (isobus)_4/5 with Tier 4F/Stage IV SCR Technology engine and cab harness 4990243	4-103
4.1.5.72	EFD00131_34 - CAN network Dyna-VT (AGCO Power)_5/5 with Tier 4F/Stage IV SCR Technology engine and cab harness 4990243	4-104
4.1.5.73	EFD00131_35 - CAN network Dyna-6 (tractor)_1/7 with Tier 4F/Stage IV SCR Technology engine and cab harnesses ACW005780-ACW005784-4392642	4-105
4.1.5.74	EFD00131_35 - CAN network Dyna-6 (engine)_2/7 with Tier 4F/Stage IV SCR Technology engine and cab harnesses ACW005780-ACW005784-4392642	4-106
4.1.5.75	EFD00131_35 - CAN network Dyna-6 (hitch)_3/7 with Tier 4F/Stage IV SCR Technology engine and cab harnesses ACW005780-ACW005784-4392642	4-107

4.1.5.76 EFD00131_35 - CAN network Dyna-6 (isobus)_4/7 with Tier 4F/Stage IV SCR Technology engine and cab harnesses ACW005780-ACW005784-4392642	4-108
4.1.5.77 EFD00131_35 - CAN network Dyna-6 (tractor)_5/7 with Tier 4F/Stage IV SCR Technology engine and cab harnesses ACW005780-ACW005784-4392642	4-109
4.1.5.78 EFD00131_35 - CAN network Dyna-6 (engine)_6/7 with Tier 4F/Stage IV SCR Technology engine and cab harnesses ACW005780-ACW005784-4392642	4-110
4.1.5.79 EFD00131_35 - CAN network Dyna-6 (AGCO Power)_7/7 with Tier 4F/Stage IV SCR Technology engine and cab harnesses ACW005780-ACW005784-4392642	4-111
4.1.5.80 EFD00131_36 - CAN network Dyna-4 (tractor)_1/3 with Tier 4F/Stage IV SCR Technology engine and cab harnesses ACW017847-ACW022303-ACW021492-4391826	4-112
4.1.5.81 EFD00131_36 - CAN network Dyna-4 (engine)_2/3 with Tier 4F/Stage IV SCR Technology engine and cab harnesses ACW017847-ACW022303-ACW021492-4391826	4-113
4.1.5.82 EFD00131_36 - CAN network Dyna-4 AGCO Power_3/3 with Tier 4F/Stage IV SCR Technology engine and cab harnesses ACW017847-ACW022303-ACW021492-4391826	4-114
4.1.5.83 EFD00131_39 - CAN network Dyna-6 (tractor)_1/7 with Tier 4F/Stage IV SCR Technology engine and cab harness ACW039167	4-115
4.1.5.84 EFD00131_39 - CAN network Dyna-6 (engine)_2/7 with Tier 4F/Stage IV SCR Technology engine and cab harness ACW039167	4-116
4.1.5.85 EFD00131_39 - CAN network Dyna-6 (hitch)_3/7 with Tier 4F/Stage IV SCR Technology engine and cab harness ACW039167	4-117
4.1.5.86 EFD00131_39 - CAN network Dyna-6 (isobus)_4/7 with Tier 4F/Stage IV SCR Technology engine and cab harness ACW039167	4-118
4.1.5.87 EFD00131_39 - CAN network Dyna-6 (tractor)_5/7 with Tier 4F/Stage IV SCR Technology engine and cab harness ACW039167	4-119
4.1.5.88 EFD00131_39 - CAN network Dyna-6 (engine)_6/7 with Tier 4F/Stage IV SCR Technology engine and cab harness ACW039167	4-120
4.1.5.89 EFD00131_39 - CAN network Dyna-6 AGCO Power_7/7 with Tier 4F/Stage IV SCR Technology engine and cab harness ACW039167	4-121
4.1.5.90 EFD00131_40 - CAN network Dyna-VT (tractor)_1/5 with Tier 4F/Stage IV SCR Technology engine and cab harness ACW039162	4-122
4.1.5.91 EFD00131_40 - CAN network Dyna-VT (hitch)_2/5 with Tier 4F/Stage IV SCR Technology engine and cab harness ACW039162	4-123
4.1.5.92 EFD00131_40 - CAN network Dyna-VT (engine)_3/5 with Tier 4F/Stage IV SCR Technology engine and cab harness ACW039162	4-124
4.1.5.93 EFD00131_40 - CAN network Dyna-VT (isobus)_4/5 with Tier 4F/Stage IV SCR Technology engine and cab harness ACW039162	4-125
4.1.5.94 EFD00131_40 - CAN network Dyna-VT AGCO Power_5/5 with Tier 4F/Stage IV SCR Technology engine and cab harness ACW039162	4-126
4.1.5.95 EFD00132_7 - Electric rear-view mirrors	4-127
4.1.5.96 EFD00133_7 - Pneumatic seat	4-128
4.1.5.97 EFD00135_11 - Ventilation for tractors with standard roof	4-129
4.1.5.98 EFD00135_12 - Ventilation for tractors with high-visibility roof	4-130
4.1.5.99 EFD00136_59 - EAME direction indicators and hazard warning lights - standard roof	4-131
4.1.5.100 EFD00136_60 - NA direction indicators and hazard warning lights	4-132
4.1.5.101 EFD00136_61 - EAME direction indicators and hazard warning lights - high-visibility roof	4-133
4.1.5.102 EFD00137_23 - Number plate lighting (except Italy)	4-134
4.1.5.103 EFD00137_24 - Italian number plate lighting	4-135
4.1.5.104 EFD00138_35 - NA side lights	4-136
4.1.5.105 EFD00138_42 - EAME side lights	4-137
4.1.5.106 EFD00139_8 - Reversing light Dyna-VT	4-138
4.1.5.107 EFD00139_9 - Reversing light Dyna-6	4-139
4.1.5.108 EFD00139_12 - Reversing light Dyna-4	4-140

4.1.5.109	EFD00140_48 - High beam lamps and low beam lamps on grille and hand rails	4-141
4.1.5.110	EFD00140_49 - High beam lamps and low beam lamps on hand rails	4-142
4.1.5.111	EFD00140_50 - High beam lamps and low beam lamps on grille	4-143
4.1.5.112	EFD00140_51 - High beam lamps and low beam lamps on grille	4-144
4.1.5.113	EFD00141_77 - Work lights for tractors with panoramic cab	4-145
4.1.5.114	EFD00141_78 - Work lights + high beam lamps on hand rails for tractors with panoramic cab	4-146
4.1.5.115	EFD00141_95 - EAME work lights	4-147
4.1.5.116	EFD00141_96 - NA work lights	4-148
4.1.5.117	EFD00141_97 - Work lights	4-149
4.1.5.118	EFD00142_12 - Brake lights Dyna-VT	4-150
4.1.5.119	EFD00142_13 - Brake lights Dyna-6	4-151
4.1.5.120	EFD00142_14 - Brake lights Dyna-4	4-152
4.1.5.121	EFD00143_27 - Rotary beacon	4-153
4.1.5.122	EFD00144_8 - Control module	4-154
4.1.5.123	EFD00145_13 - NA trailer connector	4-155
4.1.5.124	EFD00145_14 - EAME trailer connector	4-156
4.1.5.125	EFD00146_9 - Automatic air conditioning back-lighting	4-157
4.1.5.126	EFD00146_10 - Manual air conditioning back-lighting	4-158
4.1.5.127	EFD00148_13 - Audible alarm	4-159
4.1.5.128	EFD00149_16 - Battery charge + start-up Tier 4F/Stage IV SCR Technology engine	4-160
4.1.5.129	EFD00150_10 - Air filter vacuum sensor	4-161
4.1.5.130	EFD00151_33 - EEM unit power supply AGCO Power (49 AWF engine)	4-162
4.1.5.131	EFD00151_34 - AGCO Power engine electronic injection for Efficient and tractor versions Exclusive (49 AWF engine)	4-163
4.1.5.132	EFD00151_35 - AGCO Power engine electronic injection for tractor versions Essential (49 AWF engine)	4-164
4.1.5.133	EFD00152_19 - Suspended front axle (for MF 6700 S models)	4-165
4.1.5.134	EFD00153_20 - Preheating power supply AGCO Power (66/74 CW-3 and 49AWF engine)	4-166
4.1.5.135	EFD00154_6 - Fuel preheater	4-167
4.1.5.136	EFD00157_6 - Vistronic Tier 4F/Stage IV SCR Technology engine	4-168
4.1.5.137	EFD00159_18 - Hydraulic spool valves Dyna-VT	4-169
4.1.5.138	EFD00159_19 - Hydraulic spool valves Dyna-6	4-170
4.1.5.139	EFD00160_29 - Rear linkage and Dual Control Dyna-VT	4-171
4.1.5.140	EFD00160_30 - GPA20 and GPA40 Dual Control and rear linkage Dyna-6_1/2	4-172
4.1.5.141	EFD00160_30 - GPA20 and GPA40 Dual Control and rear linkage Dyna-6_2/2	4-173
4.1.5.142	EFD00160_31 - Dyna-6 Open Center GPA20 Dual Control and rear linkage	4-174
4.1.5.143	EFD00160_32 - Dyna-4 Load Sensing GPA20 Dual Control and rear linkage	4-175
4.1.5.144	EFD00160_33 - Dyna-4 Open Center GPA20 Dual Control and rear linkage	4-176
4.1.5.145	EFD00161_13 - Front linkage	4-177
4.1.5.146	EFD00162_11 - Dual Control linkage and trailed implements (TIC) Dyna-VT	4-178
4.1.5.147	EFD00162_12 - Dual Control linkage and trailed implements (TIC) Dyna-6	4-179
4.1.5.148	EFD00166_2 - Side windscreen wiper for tractors with panoramic cab	4-180
4.1.5.149	EFD00167_2 - Triflash for tractors with panoramic cab	4-181
4.1.5.150	EFD00168_2 - Rear fog light for tractors with panoramic cab	4-182
4.1.5.151	EFD00169_18 - Controller power supply Dyna-VT_1/5	4-183
4.1.5.152	EFD00169_18 - Controller power supply Dyna-VT_2/5	4-184

4.1.5.153	EFD00169_18 - Controller power supply Dyna-VT_3/5	4-185
4.1.5.154	EFD00169_18 - Controller power supply Dyna-VT_4/5	4-186
4.1.5.155	EFD00169_18 - Controller power supply Dyna-VT_5/5	4-187
4.1.5.156	EFD00169_19 - Controller power supply Dyna-6 - Transmission	4-188
4.1.5.157	EFD00169_19 - Controller power supply Dyna-6 - linkage	4-189
4.1.5.158	EFD00169_19 - Controller power supply Dyna-6 - suspended front axle (TECU)	4-190
4.1.5.159	EFD00169_19 - Controller power supply Dyna-6 - Instrument panel	4-191
4.1.5.160	EFD00169_19 - Controller power supply Dyna-6 - Suspended cab	4-192
4.1.5.161	EFD00169_20 - Controller power supply Dyna-4_1/4	4-193
4.1.5.162	EFD00169_20 - Controller power supply Dyna-4_2/4	4-194
4.1.5.163	EFD00169_20 - Controller power supply Dyna-4_3/4	4-195
4.1.5.164	EFD00169_20 - Controller power supply Dyna-4_4/4	4-196
4.1.5.165	EFD00170_3 - High-pressure braking	4-197
4.1.5.166	EFD00172_6 - Front accessory connection socket_1/2	4-198
4.1.5.167	EFD00172_6 - Front accessory connection socket_2/2	4-199
4.1.5.168	EFD00173_7 - Water in fuel sensor of the Tier 4f/Stage IV SCR Technology engine	4-200
4.1.5.169	EFD00174_12 - air brake Dyna-VT_1/2	4-201
4.1.5.170	EFD00174_12 - air brake Dyna-VT_2/2	4-202
4.1.5.171	EFD00174_14 - GPA20 and GPA50 air brake Dyna-6	4-203
4.1.5.172	EFD00174_15 - GPA20 and GPA50 air brake Dyna-4	4-204
4.1.5.173	EFD00175 - Tier4f/Stage IV AGCO Power engine_1/3	4-205
4.1.5.174	EFD00175 - Tier4f/Stage IV AGCO Power engine_2/3	4-206
4.1.5.175	EFD00175 - Tier4f/Stage IV AGCO Power engine_3/3	4-207
4.1.5.176	EFD00175_9 - SCR Technology	4-208
4.1.5.177	EFD00176 - LoaderALO	4-209
4.1.5.178	EFD00176_14 - front set Dyna-6	4-210
4.1.5.179	EFD00176_15 - ALO loader Dyna-6	4-211
4.1.5.180	EFD00176_16 - front set Dyna-VT	4-212
4.1.5.181	EFD00176_17 - ALO mechanical loader Dyna-4	4-213
4.1.5.182	EFD00178_5 - Steering SpeedSteer	4-214
4.1.5.183	EFD00183_2 - Implement attachment without Isobus	4-215
4.1.5.184	EFD00184_3 - AgCommand™	4-216

5 Harnesses 5-1

5.1 Harnesses 5-5

5.1.1 Identification of harnesses 5-5

5.1.2 Identification table for cable colors 5-8

5.1.3 Harnesses 5-11

5.1.3.1 FAI200 - Engine harness cab - ACW0349940_1/2 5-11

5.1.3.2 FAI200 - Engine harness cab - ACW0349940_2/2 5-12

5.1.3.3 FAI200 - Engine harness - ACW061250_1/4 5-13

5.1.3.4 FAI200 - Engine harness - ACW061250_2/4 5-14

5.1.3.5 FAI200 - Engine harness - ACW061250_3/4 5-15

5.1.3.6 FAI200 - Engine harness - ACW061250_4/4 5-16

5.1.3.7 FAI201 - Front headlights harness - 4388041_1/2 5-17

5.1.3.8 FAI201 - Front headlights harness - 4388041_2/2 5-18

5.1.3.9 FAI202 - Suspended front axle harness - ACW033127_1/2 5-19

5.1.3.10 FAI202 - Suspended front axle harness - ACW033127_2/2 5-20

5.1.3.11 FAI203 - Transmission harness Dyna-VT - 4389481_1/3 5-21

5.1.3.12 FAI203 - Transmission harness Dyna-VT - 4389481_2/3 5-22

5.1.3.13 FAI203 - Transmission harness Dyna-VT - 4389481_3/3 5-23

5.1.3.14 FAI203 - Transmission harness Dyna-4/Dyna-6 GTA2520 -
ACW104556_1/3 5-24

5.1.3.15 FAI203 - Transmission harness Dyna-4/Dyna-6 GTA2520 -
ACW104556_2/3 5-25

5.1.3.16	FAI203 - Transmission harness Dyna-4/Dyna-6 GTA2520 - ACW104556_3/3	5-26
5.1.3.17	FAI205 - Electrohydraulic valves harness - 4292090	5-27
5.1.3.18	FAI205 - Electrohydraulic valves harness - 4292091	5-28
5.1.3.19	FAI205 - Electrohydraulic valves harness - 4292093	5-29
5.1.3.20	FAI205 - Electrohydraulic valves harness - 4387694	5-30
5.1.3.21	FAI208 - Linkage with Dual Control and TIC harness - 4387797_1/2	5-31
5.1.3.22	FAI208 - Linkage with Dual Control and TIC harness - 4387797_2/2	5-32
5.1.3.23	FAI210 - Cab transmission harness Dyna-4 municipal - 4391826_1/8	5-33
5.1.3.24	FAI210 - Cab transmission harness Dyna-4 municipal - 4391826_2/8	5-34
5.1.3.25	FAI210 - Cab transmission harness Dyna-4 municipal - 4391826_3/8	5-35
5.1.3.26	FAI210 - Cab transmission harness Dyna-4 municipal - 4391826_4/8	5-36
5.1.3.27	FAI210 - Cab transmission harness Dyna-4 municipal - 4391826_5/8	5-37
5.1.3.28	FAI210 - Cab transmission harness Dyna-4 municipal - 4391826_6/8	5-38
5.1.3.29	FAI210 - Cab transmission harness Dyna-4 municipal - 4391826_7/8	5-39
5.1.3.30	FAI210 - Cab transmission harness Dyna-4 municipal - 4391826_8/8	5-40
5.1.3.31	FAI210 - Cab transmission harness Dyna-6 municipal - 4392642_1/9	5-41
5.1.3.32	FAI210 - Cab transmission harness Dyna-6 municipal - 4392642_2/9	5-42
5.1.3.33	FAI210 - Cab transmission harness Dyna-6 municipal - 4392642_3/9	5-43
5.1.3.34	FAI210 - Cab transmission harness Dyna-6 municipal - 4392642_4/9	5-44
5.1.3.35	FAI210 - Cab transmission harness Dyna-6 municipal - 4392642_5/9	5-45
5.1.3.36	FAI210 - Cab transmission harness Dyna-6 municipal - 4392642_6/9	5-46
5.1.3.37	FAI210 - Cab transmission harness Dyna-6 municipal - 4392642_7/9	5-47
5.1.3.38	FAI210 - Cab transmission harness Dyna-6 municipal - 4392642_8/9	5-48
5.1.3.39	FAI210 - Cab transmission harness Dyna-6 municipal - 4392642_9/9	5-49
5.1.3.40	FAI210 - Cab transmission harness Dyna-6 long console - ACW005784_1/8	5-50
5.1.3.41	FAI210 - Cab transmission harness Dyna-6 long console - ACW005784_2/8	5-51
5.1.3.42	FAI210 - Cab transmission harness Dyna-6 long console - ACW005784_3/8	5-52
5.1.3.43	FAI210 - Cab transmission harness Dyna-6 long console - ACW005784_4/8	5-53
5.1.3.44	FAI210 - Cab transmission harness Dyna-6 long console - ACW005784_5/8	5-54
5.1.3.45	FAI210 - Cab transmission harness Dyna-6 long console - ACW005784_6/8	5-55
5.1.3.46	FAI210 - Cab transmission harness Dyna-6 long console - ACW005784_7/8	5-56
5.1.3.47	FAI210 - Cab transmission harness Dyna-6 long console - ACW005784_8/8	5-57
5.1.3.48	FAI210 - Cab transmission harness Dyna-4 long console - ACW017847_1/7	5-58
5.1.3.49	FAI210 - Cab transmission harness Dyna-4 long console - ACW017847_2/7	5-59
5.1.3.50	FAI210 - Cab transmission harness Dyna-4 long console - ACW017847_3/7	5-60
5.1.3.51	FAI210 - Cab transmission harness Dyna-4 long console - ACW017847_4/7	5-61
5.1.3.52	FAI210 - Cab transmission harness Dyna-4 long console - ACW017847_5/7	5-62
5.1.3.53	FAI210 - Cab transmission harness Dyna-4 long console - ACW017847_6/7	5-63
5.1.3.54	FAI210 - Cab transmission harness Dyna-4 long console - ACW017847_7/7	5-64
5.1.3.55	FAI210 - Cab transmission harness Dyna-VT short console - ACW039162_1/9	5-65

5.1.3.56	FAI210 - Cab transmission harness Dyna-VT short console - ACW039162_2/9	5-66
5.1.3.57	FAI210 - Cab transmission harness Dyna-VT short console - ACW039162_3/9	5-67
5.1.3.58	FAI210 - Cab transmission harness Dyna-VT short console - ACW039162_4/9	5-68
5.1.3.59	FAI210 - Cab transmission harness Dyna-VT short console - ACW039162_5/9	5-69
5.1.3.60	FAI210 - Cab transmission harness Dyna-VT short console - ACW039162_6/9	5-70
5.1.3.61	FAI210 - Cab transmission harness Dyna-VT short console - ACW039162_7/9	5-71
5.1.3.62	FAI210 - Cab transmission harness Dyna-VT short console - ACW039162_8/9	5-72
5.1.3.63	FAI210 - Cab transmission harness Dyna-VT short console - ACW039162_9/9	5-73
5.1.3.64	FAI210 - Cab transmission harness Dyna-6 short console - ACW039167_1/9	5-74
5.1.3.65	FAI210 - Cab transmission harness Dyna-6 short console - ACW039167_2/9	5-75
5.1.3.66	FAI210 - Cab transmission harness Dyna-6 short console - ACW039167_3/9	5-76
5.1.3.67	FAI210 - Cab transmission harness Dyna-6 short console - ACW039167_4/9	5-77
5.1.3.68	FAI210 - Cab transmission harness Dyna-6 short console - ACW039167_5/9	5-78
5.1.3.69	FAI210 - Cab transmission harness Dyna-6 short console - ACW039167_6/9	5-79
5.1.3.70	FAI210 - Cab transmission harness Dyna-6 short console - ACW039167_7/9	5-80
5.1.3.71	FAI210 - Cab transmission harness Dyna-6 short console - ACW039167_8/9	5-81
5.1.3.72	FAI210 - Cab transmission harness Dyna-6 short console - ACW039167_9/9	5-82
5.1.3.73	FAI212 - Lighting harness Municipal cab - 4380685_1/3	5-83
5.1.3.74	FAI212 - Lighting harness Municipal cab - 4380685_2/3	5-84
5.1.3.75	FAI212 - Lighting harness Municipal cab - 4380685_3/3	5-85
5.1.3.76	FAI212 - Lighting harness EAME - 4389032_1/3	5-86
5.1.3.77	FAI212 - Lighting harness EAME - 4389032_2/3	5-87
5.1.3.78	FAI212 - Lighting harness EAME - 4389032_3/3	5-88
5.1.3.79	FAI212 - Lighting harness NA - 4389034_1/3	5-89
5.1.3.80	FAI212 - Lighting harness NA - 4389034_2/3	5-90
5.1.3.81	FAI212 - Lighting harness NA - 4389034_3/3	5-91
5.1.3.82	FAI219 - Cab interior power socket harness - 4290574_1/2	5-92
5.1.3.83	FAI219 - Cab interior power socket harness - 4290574_2/2	5-93
5.1.3.84	FAI219 - Cab interior power socket harness - 4290575_1/2	5-94
5.1.3.85	FAI219 - Cab interior power socket harness - 4290575_2/2	5-95
5.1.3.86	FAI223 - Roof harness standard with manual air conditioning - 4353057_1/3	5-96
5.1.3.87	FAI223 - Roof harness standard with manual air conditioning - 4353057_2/3	5-97
5.1.3.88	FAI223 - Roof harness standard with manual air conditioning - 4353057_3/3	5-98
5.1.3.89	FAI223 - Roof harness_High visibility - 4375395_1/3	5-99
5.1.3.90	FAI223 - Roof harness_High visibility_4375395_2/3	5-100
5.1.3.91	FAI223 - Roof harness_High visibility_4375395_3/3	5-101
5.1.3.92	FAI223 - Roof harness_standard_municipal_cab_ACW001936_1/3	5-102
5.1.3.93	FAI223 - Roof harness_standard_municipal_cab_ACW001936_2/3	5-103

5.1.3.94	FAI223 - Roof harness_standard_municipal_cab_ACW001936_3/3 . . .	5-104
5.1.3.95	FAI224 - Hand rail lighting harness - 4390262_1/2	5-105
5.1.3.96	FAI224 - Hand rail lighting harness - 4390262_2/2	5-106
5.1.3.97	FAI225 - Electric rear-view mirror harness - 4352622_1/2	5-107
5.1.3.98	FAI225 - Electric rear-view mirror harness - 4352622_2/2	5-108
5.1.3.99	FAI227 - Roof harness with automatic air conditioning - 4352621_1/3 .	5-109
5.1.3.100	FAI227 - Roof harness with automatic air conditioning - 4352621_2/3	5-110
5.1.3.101	FAI227 - Roof harness with automatic air conditioning - 4352621_3/3	5-111
5.1.3.102	FAI228 - Number plate lighting harness - 4353107_1/2	5-112
5.1.3.103	FAI228 - Number plate lighting harness - 4353107_2/2	5-113
5.1.3.104	FAI228 - Number plate lighting harness - 4357222_1/2	5-114
5.1.3.105	FAI228 - Number plate lighting harness - 4357222_2/2	5-115
5.1.3.106	FAI245 - Left-hand linkage external controls harness - 4348463_1/2 .	5-116
5.1.3.107	FAI245 - Left-hand linkage external controls harness - 4348463_2/2 .	5-117
5.1.3.108	FAI253 - Hand rail harness - 4390260_1/2	5-118
5.1.3.109	FAI253 - Hand rail harness - 4390260_2/2	5-119
5.1.3.110	FAI261 - Isobus harness - 4353130_1/2	5-120
5.1.3.111	FAI261 - Isobus harness - 4353130_2/2	5-121
5.1.3.112	FAI261 - Isobus harness - 4353133	5-122
5.1.3.113	FAI262 - Auto-Guide™ engine harness - 4296810_1/2	5-123
5.1.3.114	FAI262 - Auto-Guide™ engine harness - 4296810_2/2	5-124
5.1.3.115	FAI263 - Auto-Guide™ cab adapter harness - 4353936_1/2	5-125
5.1.3.116	FAI263 - Auto-Guide™ cab adapter harness - 4353936_2/2	5-126
5.1.3.117	FAI265 - Pneumatic braking harness Dyna-6- ACW034317_1/2	5-127
5.1.3.118	FAI265 - Pneumatic braking harness Dyna-6- ACW034317_2/2	5-128
5.1.3.119	FAI265 - Pneumatic braking harness Dyna-VT - ACW016912_1/2 . . .	5-129
5.1.3.120	FAI265 - Pneumatic braking harness Dyna-VT - ACW016912_2/2 . . .	5-130
5.1.3.121	FAI272 - Suspended cab harness Dyna-6 - ACW039185_1/2	5-131
5.1.3.122	FAI272 - Suspended cab harness Dyna-6 - ACW039185_2/2	5-132
5.1.3.123	FAI272 - Suspended cab harness Dyna-VT - ACW060395_1/2	5-133
5.1.3.124	FAI272 - Suspended cab harness Dyna-VT - ACW060395_2/2	5-134
5.1.3.125	FAI273 - Front linkage harness with power socket - 4353047_1/2 . . .	5-135
5.1.3.126	FAI273 - Front linkage harness with power socket - 4353047_2/2 . . .	5-136
5.1.3.127	FAI273 - Front linkage harness without power socket - 4353048_1/2	5-137
5.1.3.128	FAI273 - Front linkage harness without power socket - 4353048_2/2	5-138
5.1.3.129	FAI283 - TopDock harness - 4377536_1/2	5-139
5.1.3.130	FAI283 - TopDock harness - 4377536_2/2	5-140
5.1.3.131	FAI287 - ALO loader harness external without multi-function armrest - 4378794_1/2	5-141
5.1.3.132	FAI287 - ALO loader harness external without multi-function armrest - 4378794_2/2	5-142
5.1.3.133	FAI287 - ALO loader harness internal without multi-function armrest - 4378879_1/2	5-143
5.1.3.134	FAI287 - ALO loader harness internal without multi-function armrest - 4378879_2/2	5-144
5.1.3.135	FAI290 - Non-Isobus implement connector harness - 4296266_1/2 . .	5-145
5.1.3.136	FAI290 - Non-Isobus implement connector harness - 4296266_2/2 . .	5-146
5.1.3.137	FAI292 - NA indicator harness - 4350987	5-147
5.1.3.138	FAI292 - NA indicator harness - 4355519_1/2	5-148
5.1.3.139	FAI292 - NA indicator harness - 4355519_2/2	5-149
5.1.3.140	FAI293 - EAME indicator harness - 4350988	5-150
5.1.3.141	FAI293 - EAME indicator harness - 4355520_1/2	5-151
5.1.3.142	FAI293 - EAME indicator harness - 4355520_2/2	5-152
5.1.3.143	FAI294 - Additional heater harness - 4299327_1/2	5-153
5.1.3.144	FAI294 - Additional heater harness - 4299327_2/2	5-154
5.1.3.145	FAI299 - Battery isolator harness - ACW028832_1/2	5-155
5.1.3.146	FAI299 - Battery isolator harness - ACW028832_2/2	5-156
5.1.3.147	FAI300 - Air conditioning shunt harness - 4353106	5-157

5.1.3.148	FAI305 - Engine exhaust harness - 4348876	5-158
5.1.3.149	FAI307 - Datatronic 4 harness - 4353638_1/2	5-159
5.1.3.150	FAI307 - Datatronic 4 harness - 4353638_2/2	5-160
5.1.3.151	FAI307 - Datatronic 4 harness - 4390934_1/2	5-161
5.1.3.152	FAI307 - Datatronic 4 harness - 4390934_2/2	5-162
5.1.3.153	FAI310 - Battery/battery isolator negative cable harness - 4389477	5-163
5.1.3.154	FAI311 - Battery/starter positive cable harness - ACW024867	5-164
5.1.3.155	FAI312 - Cab/starter negative cable harness - ACW024869	5-165
5.1.3.156	FAI313 - Cab/battery isolator negative cable harness - 4389475	5-166
5.1.3.157	FAI314 - Alternator harness - ACW032934_1/2	5-167
5.1.3.158	FAI314 - Alternator harness - ACW032934_2/2	5-168
5.1.3.159	FAI317 - Vistronic harness - 4392053_1/2	5-169
5.1.3.160	FAI317 - Vistronic harness - 4392053_2/2	5-170
5.1.3.161	FAI321 - GSPTO harness - ACW008066_1/2	5-171
5.1.3.162	FAI321 - GSPTO harness - ACW008066_2/2	5-172
5.1.3.163	FAI323 - Hydraulic safety harness Load Sensing - 4355616_1/2	5-173
5.1.3.164	FAI323 - Hydraulic safety harness Load Sensing - 4355616_2/2	5-174
5.1.3.165	FAI324 - Open Center hydraulic safety harness - 4355617_1/2	5-175
5.1.3.166	FAI324 - Open Center hydraulic safety harness - 4355617_2/2	5-176
5.1.3.167	FAI325 - Power take-off electric selector harness - 4377601_1/2	5-177
5.1.3.168	FAI325 - Power take-off electric selector harness - 4377601_2/2	5-178
5.1.3.169	FAI327 - GPA 20 to GPA 20+ adapter harness - 4377849_1/2	5-179
5.1.3.170	FAI327 - GPA 20 to GPA 20+ adapter harness - 4377849_2/2	5-180
5.1.3.171	FAI340 - Battery/fuse box positive cable harness - ACW029172	5-181
5.1.3.172	FAI354 - External loader harness - 4374651_1/2	5-182
5.1.3.173	FAI354 - External loader harness - 4374651_2/2	5-183
5.1.3.174	FAI355 - Harness for the left-hand alternator and for the grid heater - ACW032931_1/2	5-184
5.1.3.175	FAI355 - Harness for the left-hand alternator and for the grid heater - ACW032931_2/2	5-185
5.1.3.176	FAI355 - Harness for the left-hand alternator and for the grid heater - ACW032959_1/2	5-186
5.1.3.177	FAI355 - Harness for the left-hand alternator and for the grid heater - ACW032959_2/2	5-187
5.1.3.178	FAI360 - TopDock harness - 4377537-1/2	5-188
5.1.3.179	FAI360 - TopDock harness - 4377537-2/2	5-189
5.1.3.180	FAI361 - Adapter harness for wheel angle sensor - ACW059817	5-190
6	Hydraulics diagrams	6-1
	6.1 Hydraulics diagrams	6-3
	6.1.1 Hydraulics diagrams	6-5
	6.1.1.1 HFD01022 - Standard auxiliary hydraulics diagram ML180/ML140	6-5
	6.1.1.2 HFD01032 - Standard hydraulics diagram, GTA2520 Open Center 57 l/ min	6-6
	6.1.1.3 HFD01034 - Standard hydraulics diagram, GTA2520 Open Center 100 l/ min	6-7
	6.1.1.4 HFD01047 - Standard hydraulics diagram, GTA2520 Load Sensing	6-8
	6.1.1.5 HFD01060 - Auxiliary hydraulics diagram with all options, ML140	6-9
	6.1.1.6 HFD01061 - Auxiliary hydraulics diagram: all options, GTA2520 Load Sensing	6-10
	6.1.1.7 HFD01062 - Auxiliary hydraulics diagram: all options, GTA2520 Open Center 57 l/min	6-11
	6.1.1.8 HFD01063 - Auxiliary hydraulics diagram: all options, GTA2520 Open Center 100 l/min	6-12
	6.1.1.9 HFD02009 - ML180/ML140 Auto-Guide™/SpeedSteer steering system hydraulics diagram	6-13
	6.1.1.10 HFD02010 - ML140/ML180 standard steering system hydraulics diagram	6-14

6.1.1.11	HFD03040 - Hydraulics diagram: ML180/ML140 brake system with trailer air brake	6-15
6.1.1.12	HFD03041 - Hydraulics diagram: ML180/ML140 brake system without trailer brake	6-16
6.1.1.13	HFD03052 - Hydraulics diagram: GTA2520 Open Center 57 L/min assisted braking	6-17
6.1.1.14	HFD03056 - Hydraulics diagram: GTA2520 Open Center 100 L/min assisted braking	6-18
6.1.1.15	HFD03059 - Hydraulics diagram: GTA2520 Load Sensing high-pressure braking with pneumatic trailer brake and Auto-Guide™ steering	6-19
6.1.1.16	HFD03060 - Hydraulics diagram: GTA2520 Load Sensing high pressure braking with trailer air brake	6-20
6.1.1.17	HFD03061 - Hydraulics diagram: GTA2520 Load Sensing assisted braking with pneumatic trailer brake and Auto-Guide™ steering	6-21
6.1.1.18	HFD03062 - Hydraulics diagram: GTA2520 Load Sensing assisted braking with trailer air brake	6-22
6.1.1.19	HFD03063 - Hydraulics diagram: GTA2520 Load Sensing high-pressure braking and Auto-Guide™ steering	6-23
6.1.1.20	HFD03064 - Hydraulics diagram: GTA2520 Load Sensing high pressure braking	6-24
6.1.1.21	HFD03065 - Hydraulics diagram: GTA2520 Load Sensing assisted braking and Auto-Guide™ steering	6-25
6.1.1.22	HFD03066 - Hydraulics diagram: GTA2520 Load Sensing assisted braking	6-26
6.1.1.23	HFD03075 - Hydraulics diagram: Open Center 57 l/min assisted braking with front suspension and trailer brake	6-27
6.1.1.24	HFD03076 - Hydraulics diagram: Open Center 57 l/min high-pressure braking with front suspension and trailer brake	6-28
6.1.1.25	HFD03077 - Hydraulics diagram: Open Center 57 l/min high-pressure braking and front suspension	6-29
6.1.1.26	HFD03078 - Hydraulics diagram: Open Center 100 l/min assisted braking with front suspension and trailer brake	6-30
6.1.1.27	HFD03079 - Hydraulics diagram: Open Center 100 l/min high-pressure braking with front suspension and trailer brake	6-31
6.1.1.28	HFD03080 - Hydraulics diagram: Open Center 100 l/min high-pressure braking and front suspension	6-32
6.1.1.29	HFD04004 – ML140/ML180 rear linkage hydraulics diagram	6-33
6.1.1.30	HFD05004 – ML140/ML180 front linkage hydraulics diagram	6-34
6.1.1.31	HFD05008 - Hydraulics diagram: GTA2520 Load Sensing front linkage and front spool valves with front set	6-35
6.1.1.32	HFD05009 - Hydraulics diagram: GTA2520 Load Sensing front linkage without front set	6-36
6.1.1.33	HFD06006 - Hydraulics diagram: ML180/ML140 auxiliary electrohydraulic spool valves	6-37
6.1.1.34	HFD06009 - Hydraulics diagram: ML180/ML140 auxiliary electrohydraulic and mechanical spool valves	6-38
6.1.1.35	HFD06012 - Hydraulics diagram: GTA2520 Load Sensing rear spool valves, four mechanical and Power Beyond	6-39
6.1.1.36	HFD06013 - Hydraulics diagram: GTA2520 Load Sensing rear spool valves, two mechanical and two electrohydraulic	6-40
6.1.1.37	HFD06014 - Hydraulics diagram: GTA2520 Load Sensing rear spool valves, four electrohydraulic and Power Beyond	6-41
6.1.1.38	HFD07004 – ML140/ML180 auto-hitch hydraulics diagram	6-42
6.1.1.39	HFD08008 - Hydraulics diagram: ML140 suspended front axle	6-43
6.1.1.40	HFD10000_1 – ALO loader hydraulics diagram	6-44
6.1.1.41	HFD10009 - Hydraulics diagram: ML140/ML180 tractor with loader	6-45
6.1.1.42	HFD10014 - Hydraulics diagram: GTA2520 Load Sensing loader with front set	6-46

6.1.1.43	HFD10015 - Hydraulics diagram: GTA2520 Load Sensing loader without front set	6-47
6.1.1.44	HFD10019 - Hydraulics diagram: ML140/180 Load Sensing loader with front set and 3rd function	6-48
6.1.1.45	HFD10020 - Hydraulics diagram: GTA2520 Load Sensing loader with front set and 3rd function	6-49
6.1.1.46	Transmission hydraulics diagram	6-50
7	Pneumatic diagrams	7-1
7.1	Pneumatic diagrams	7-3
7.1.1	Pneumatic diagrams	7-5
7.1.1.1	PFD01015 - GPA40/ML140/ML180 pneumatic trailer braking	7-5
7.1.1.2	PFD01016 - GPA20 pneumatic trailer braking	7-6
8	Adjustments, bleeding and calibrations	8-1
8.1	Bleeding	8-3
8.1.1	Bleeding: Dyna-VT - Assisted brake master cylinders	8-3
8.1.1.1	Charge connector	8-3
8.1.1.2	Pressure connector	8-3
8.1.1.3	Bleed screw locations	8-3
8.1.1.4	Procedure for bleeding the assisted braking system	8-4
8.1.2	Bleeding: Dyna-4/Dyna-6 - Assisted brake master cylinders	8-6
8.1.2.1	Charge connector	8-6
8.1.2.2	Pressure connector - Load Sensing system	8-6
8.1.2.3	Pressure connector - Open Center system	8-6
8.1.2.4	Bleed screw locations	8-7
8.1.2.5	Procedure for bleeding the assisted braking system	8-8
8.1.3	Bleeding: Dyna-4/Dyna-6 - High-pressure braking	8-10
8.1.3.1	Bleed screw locations	8-10
8.1.3.2	Procedure for bleeding the high-pressure braking system	8-11
8.2	Calibrations	8-13
8.2.1	Calibration of the clutch pedal sensor	8-13
8.2.2	Calibration of the throttle pedal sensor	8-13
8.2.3	Calibrating the rear linkage	8-14
8.2.4	Calibration of the front linkage position sensor	8-16
8.2.5	Calibrate the suspended front axle.	8-17
8.2.6	Calibrating the automatic disengagement of the differential and 4-wheel drive	8-18
8.2.7	Calibration of the forward-travel lever	8-20
8.2.8	Forward speed calibration	8-22
8.2.9	Front power take-off calibration for Dyna-4/Dyna-6	8-23
8.2.10	Calibration of the Dyna-4 and Dyna-6 PowerShuttle transmission	8-24
8.2.11	Calibrating the power sensor on the Dyna-6 transmission	8-27
8.2.12	Dyna-VT transmission calibrations: Introduction and access to calibration using the instrument panel	8-28
8.2.13	Calibration of the high/low speed ranges (Hare/Tortoise) for Dyna-VT	8-29
8.2.14	Dyna-VT transmission calibration	8-30
8.2.15	Calibration of the Dyna-VT coupler function	8-31
8.2.16	Rear power take-off calibration for Dyna-VT	8-32
8.2.17	Front power take-off calibration for Dyna-VT	8-33
8.2.18	Dyna-VT transmission calibration error code	8-34
8.2.19	Calibrations to be carried out using the diagnostic tool	8-37
8.2.19.1	Calibrating the forward travel lever on the armrest	8-37
8.2.19.2	Calibration of the FingerTIP controls on the armrest	8-39
8.2.19.3	Calibration of the FingerTIPs on the console	8-42
8.2.19.4	Joystick calibration	8-46
8.2.19.5	Calibrating the forward travel lever on the armrest	8-48
8.2.19.6	Calibrating the hand throttle.	8-51

8.2.19.7 Calibrating the depth control thumb wheel 8-53

1. General

1.1 General specifications	1-3
1.1.1 tractors MF 6700 SDyna-4	1-3
1.1.2 Tractors MF 6700 SDyna-6	1-11
1.1.3 MF 6700 S Dyna-VT tractors	1-20
1.2 Forward speeds	1-30
1.2.1 Forward speed with Dyna-4 40 kph transmission and 18.4R38 tires	1-30
1.2.2 Forward speed with Dyna-4 40 kph transmission and 20.8R38 tires	1-30
1.2.3 Forward speed with Dyna-6 40 kph ECO transmission and 20.8R38 tires	1-32
1.2.4 Forward speed with Dyna-6 50 kph transmission and 20.8R38 tires	1-33
1.2.5 Forward speed for all models with transmission in Dyna-VT mode	1-35
1.3 Dimensions and weights	1-37
1.3.1 Dimensions and weights	1-37
1.4 Attachment points	1-41
1.4.1 Attachment points: MF 6712 S / MF 6713 S / MF 6714 S Dyna-4/Dyna-6 models without front linkage	1-41
1.4.2 Attachment points: MF 6712 S / MF 6713 S / MF 6714 S Dyna-4/Dyna-6 models with front linkage	1-43
1.4.3 Attachment points: MF 6715 S / MF 6716 S / MF 6718 S Dyna-4/Dyna-6 models without front linkage	1-45
1.4.4 Attachment points: MF 6715 S / MF 6716 S / MF 6718 S Dyna-4/Dyna-6 models with front linkage	1-47
1.4.5 Attachment points: MF 6713 S / MF 6714 S / MF 6715 S / MF 6716 S / MF 6718 S Dyna-VT models without front linkage:	1-49
1.4.6 Attachment points: MF 6713 S / MF 6714 S / MF 6715 S / MF 6716 S / MF 6718 S Dyna-VT models with front linkage	1-51
1.5 Capacities	1-53
1.5.1 Capacities	1-53
1.6 Tightening torques, retaining compounds and sealing products	1-55
1.6.1 Retaining compounds and sealing products	1-55
1.6.2 Tightening torques for screws and nuts	1-56
1.6.3 Tightening torques for hydraulic unions	1-60
1.7 Units of measurement	1-64
1.7.1 Conversion table	1-64

1.1 General specifications

1.1.1 tractors MF 6700 SDyna-4

Engine				
Model	MF 6712 S	MF 6713 S	MF 6714 S	MF 6715 S
Brand	AGCO Power			
Type	49 AWF			
Nominal power hp ISO (kW) at an engine speed of 2100 rpm	110 (81)	115 (85)	130 (96)	140 (103)
Maximum power hp ISO (kW) at an engine speed of 2000 rpm	120 (88)	130 (96)	140 (103)	150 (110)
Maximum EPM power hp ISO (kW) at an engine speed of 2000 rpm	140 (103)	150 (110)	160 (118)	175 (129)
Maximum EPM torque (Nm)	614 Nm	648 Nm	691 Nm	745 Nm
Engine displacement (in liters)	4.9			
Piston travel	134 mm			
Piston diameter	108 mm			
Compression ratio	17,8 bar ± 0,5 bar			
Number of cylinders	4			
Idle speed, hand brake engaged	750 rpm			
Idle speed, hand brake disengaged	850 rpm			
Nominal speed	2100 rpm			
Maximum speed	2130 rpm			
Engine weight	345 kg			
High-pressure pump brand	Bosch			
Fuel injection type	Common rail			
Firing order	1-2-4-3			
Maximum pressure in the high-pressure system	2000 bar			
Injector brand	Bosch			
Injector type	CRIN 3.20			
Charge pump type	Manual			
Fuel prefilter filtration capacity	10 μ			
Main fuel filter filtration capacity	5 μ			

Engine				
Model	MF 6712 S	MF 6713 S	MF 6714 S	MF 6715 S
Low-pressure system pressure at minimum speed	0,5 bar to 1 bar			
Low-pressure system pressure at maximum speed	0,5 bar to 1 bar			
Recommended oil:	API-CJ4 or ACEA-E9			
Maximum operating tilt (precautions)	25° pitch			
	20° roll			
Oil/fuel consumption	Maximum 0.2%			
Lubrication system	Gear pump			
Oil cooling system	Oil/water heat exchanger			
Oil pressure at minimum speed	1,5 bar			
Oil pressure at maximum speed	2,5 bar at 5 bar depending on the temperature			
Relief valve adjustment pressure	5 bar (spring pressure)			
Air suction type	Turbocharged with air/air intercooler			
Air preheating type	Grid heater with relay controlled by the ECU			
Number of valves	16			
Valve clearance value	0,35 mm (inlet and exhaust)			
Engine cooling system	Coolant			
Fan type	Viscostatic			
Thermostat begins to open at	83 °C			
Coolant temperature	-36 °C to +106 °C			
Air compressor brand for the brake system	Knorr Bremse			
Type of compressor	Piston			
Pressure range:	6,5 bar to 8 bar			
Block preheater	110 or 220 volts			
Fuel preheater	Optional			
Urea preheater	Tank: coolant			
Exhaust fumes recirculation system	Pump module and supply lines: electric			
DOC + SCR system (DEF or AdBlue™ injection)	DOC with metal substrate (exhaust fumes oxidation catalyzer)			
	SCR Technology with 1 ceramic substrate (exhaust fumes treatment)			
Safety system	NOx sensors at exhaust inlet and outlet			

Engine				
Model	MF 6712 S	MF 6713 S	MF 6714 S	MF 6715 S
Device brand	Bosch Denox 2.2+			
Type of control	Engine controller EEM4			
Urea solidification temperature	-11 °C			
Oil vapor recirculation system	Closed system breather (CCV)			
Belt: Air conditioning compressor/ left-hand alternator	Poly V belt			
Belt: Fan/right-hand alternator	Poly V belt			
Belt: Air compressor	Poly V belt			

Rear axle transmission		
Model	MF 6712 S/MF 6713 S	MF 6714 S/MF 6715 S
Gearbox type	GBA25	
Number of ratios	4	
Number of ranges	4	
Number of gears	16/16	
Super creeper gears	14/1	
Number of gears with super creeper gears	32/32	
Maximum speed	40 km/h	
Rear axle type	GPA22/22+	GPA23/23+
Number of pinion/crown wheel teeth	8/39	8/39
Rear axle ratio	24.75	27.16
4WD ratio	0.83	0.83
Final drive type	Heavy Duty (HD) or Heavy Duty + (HD+)	Super Heavy Duty (SHD)
Final drive reduction ratio	(53+13)/13	(64+14)/14
Maximum 4WD clutch torque	180 daNm	206 daNm
Number of 4WD disks	6 disks	
Main brake type	Disk	
Number of disks per side	1 disk	
Braking pressure	66 - 70 bar	
Parking brake type	Hand brake	

Rear axle transmission		
Model	MF 6712 S/MF 6713 S	MF 6714 S/MF 6715 S
Trailer brake type	Hydraulic and pneumatic with built-in antifreeze pump	
Pneumatic trailer braking pressure	6,9 bar to 8,3 bar	
Hydraulic trailer braking pressure	0 to 150 bar	
Maximum operating tilt - pitch (front/rear)	15° (> 15 km/h) 22° (< or = 15 km/h)	
Maximum operating tilt - roll (right/left)	15° (> 15 km/h) 22° (< or = 15 km/h)	
Maximum operating tilt - combined	15° (> 15 km/h) 22° (< or = 15 km/h)	
Total loaded weight supported by rear axle	7600 kg	9000 kg

Front axle		
Model	MF 6712 S/MF 6713 S/MF 6714 S	MF 6715 S
Brand	DANA	
Axle type	Suspended or fixed	
Supplier reference - suspended axle	735/614	735/613
Suspended front axle weight	587 kg	587 kg
Supplier reference - fixed axle	735/528	735/530
Fixed front axle weight	347 kg	347 kg
Number of differential disks	12	
Total ratio for fixed and suspended front axle	15.5	17
Total loaded weight supported by front axle	5000 kg	6000 kg
Rotational direction	Anti-clockwise	
Recommended oil type (beam and final drive)	SAE85W90 (API GL5-MIL 2105B)	
Ratio for fixed and suspended axle final drive	6	
Number of pinion/crown wheel teeth	12/31	12/34
Maximum steering angle	55°	

Thank you so much for reading.
Please click the “Buy Now!”
button below to download the
complete manual.



After you pay.

You can download the most
perfect and complete manual in
the world immediately.

Our support email:

ebooklibonline@outlook.com