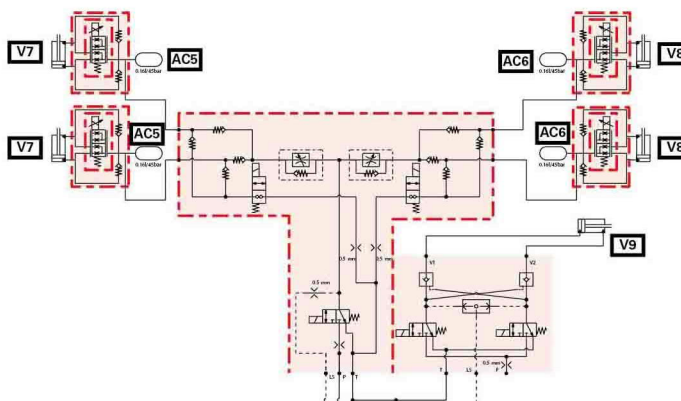
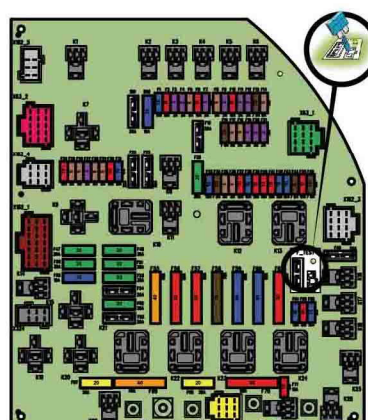


# Technician Service Book - MF 5700 S series tractors

Schémas électriques et hydrauliques



# Technician Service Book - MF 5700 S series tractors

<b>1 General Information</b>	1-1
<b>1.1 General specifications</b>	1-3
1.1.1 MF 5700 S models	1-3
<b>1.2 Forward speeds</b>	1-12
1.2.1 Forward speed at 2200 rpm for all models and tire sizes 16.9R34	1-12
1.2.2 Forward speed at 2200 rpm for all models and 18.4R38 tires	1-13
<b>1.3 Dimensions and weights</b>	1-15
1.3.1 Dimensions and weights	1-15
<b>1.4 Attachment points</b>	1-18
1.4.1 Attachment points	1-18
<b>1.5 capacities</b>	1-20
1.5.1 capacities	1-20
<b>1.6 Tightening torques, retaining compounds and sealing products</b>	1-21
1.6.1 Retaining compounds and sealing products	1-21
1.6.2 Tightening torques for screws and nuts	1-22
1.6.3 Tightening torques for hydraulic unions	1-26
<b>1.7 Units of measurement</b>	1-30
1.7.1 Conversion table	1-30
<b>2 Error codes</b>	2-1
<b>2.1 Error codes</b>	2-3
2.1.1 General table of faults	2-3
2.1.2 Indicator light panel	2-6
2.1.3 Indication of faults	2-14
2.1.4 Description of error code format	2-17
2.1.5 Instrument panel error codes Dyna-4/Dyna-6	2-18
2.1.6 AGCO Power Tier 3/Stage IIIA engine and Tier 4F/Stage IV SCR Technology engine error codes	2-19
2.1.7 Transmission error codes Dyna-4/Dyna-6	2-35
2.1.8 Electro-hydraulic unit error codes	2-37
2.1.9 Front axle error codes for Dyna-4/Dyna-6	2-38
2.1.10 Power take-off error codes Dyna-4/Dyna-6	2-38
2.1.11 Error codes for the high-pressure braking	2-39
2.1.12 Rear linkage error codes	2-39
2.1.13 Front power lift error codes	2-41
2.1.14 Armrest error codes	2-41
2.1.15 Hydraulic valve error codes	2-42
2.1.16 Air conditioning error codes	2-44
2.1.17 Error codes of the keypad in the pillar	2-45
<b>3 Fuse box</b>	3-1
<b>3.1 Fuse box</b>	3-3
3.1.1 Fuse box description	3-3
3.1.2 Description of the secondary fuse box (depending on model)	3-13
3.1.3 Description of additional fuses and relays	3-16
3.1.4 Battery isolator	3-18
<b>4 Electrical diagrams</b>	4-1

<b>4.1 Electrical diagrams</b>	<b>4-3</b>
4.1.1 Identification of electrical diagrams	4-3
4.1.2 Identification of electrical connectors from X1 to X500	4-5
4.1.3 Identification of electrical connectors from X501 to X1000	4-17
4.1.4 Identification table for cable colors	4-27
4.1.5 Electrical diagrams	4-29
4.1.5.1 EFD00000_14 - Battery 12 V power supply points	4-29
4.1.5.2 EFD00000_15 - Battery earth points	4-30
4.1.5.3 EFD00100_18 - Dyna-6 4-wheel drive	4-31
4.1.5.4 EFD00100_19 - Dyna-4 4-wheel drive	4-32
4.1.5.5 EFD00101_18 - Dyna-6 differential lock	4-33
4.1.5.6 EFD00101_19 - Dyna-4 differential lock	4-34
4.1.5.7 EFD00113_7 - Lighter	4-35
4.1.5.8 EFD00114_30 - Radio	4-36
4.1.5.9 EFD00117_28 - Additional heater	4-37
4.1.5.10 EFD00117_39 - Automatic air conditioning	4-38
4.1.5.11 EFD00117_40 - Manual air conditioning for standard roof	4-39
4.1.5.12 EFD00117_41 - Manual air conditioning for high-visibility roof	4-40
4.1.5.13 EFD00118_9 - DOT Matrix	4-41
4.1.5.14 EFD00119_10 - Rear windscreen wiper	4-42
4.1.5.15 EFD00119_11 - Rear windscreen wiper for tractors with panoramic cab	4-43
4.1.5.16 EFD00120_12 - Front windscreen wiper	4-44
4.1.5.17 EFD00121_18 - Dyna-6 parking brake	4-45
4.1.5.18 EFD00121_19 - Dyna-4 parking brake	4-46
4.1.5.19 EFD00122_9 - Dyna-4/Dyna-6 fuel gage	4-47
4.1.5.20 EFD00123_24 - Datatronic CCD	4-48
4.1.5.21 EFD00125_10 - Cab light	4-49
4.1.5.22 EFD00126_11 - Extreme cold weather heating with automatic air conditioning	4-50
4.1.5.23 EFD00126_12 - Extreme cold weather heating with manual air conditioning for tractors with standard roof	4-51
4.1.5.24 EFD00126_13 - Extreme cold weather heating with manual air conditioning for tractors with high-visibility roof	4-52
4.1.5.25 EFD00126_14 - Extreme cold weather heating with manual air conditioning for tractors with flat roof	4-53
4.1.5.26 EFD00127_8 - Left-hand pillar 12 V socket	4-54
4.1.5.27 EFD00128_17 - EAME/ISO cab current socket	4-55
4.1.5.28 EFD00128_18 - NA/SAE cab current socket	4-56
4.1.5.29 EFD00128_20 - EAME/ISO cab current socket_1/2	4-57
4.1.5.30 EFD00128_20 - EAME/ISO cab current socket_2/2	4-58
4.1.5.31 EFD00128_21 - NA/SAE cab current socket_1/2	4-59
4.1.5.32 EFD00128_21 - NA/SAE cab current socket_2/2	4-60
4.1.5.33 EFD00129_12 - Diagnostics connector_1/2	4-61
4.1.5.34 EFD00129_12 - Diagnostics connector_2/2	4-62
4.1.5.35 EFD00130_6 - Dyna-6 and Dyna-4 radar	4-64
4.1.5.36 EFD00132_7 - Electric rear-view mirrors	4-64
4.1.5.37 EFD00135_11 - Ventilation for tractors with standard roof	4-65
4.1.5.38 EFD00135_12 - Ventilation for tractors with high-visibility roof	4-66
4.1.5.39 EFD00136_59 - EAME direction indicators and flashing warning lights - standard roof	4-67
4.1.5.40 EFD00136_60 - NA direction indicators and flashing warning lights	4-68
4.1.5.41 EFD00136_61 - EAME direction indicators and flashing warning lights - high-visibility roof	4-69
4.1.5.42 EFD00137_23 - Number plate lighting (except Italy)	4-70
4.1.5.43 EFD00137_24 - Italian number plate lighting	4-71
4.1.5.44 EFD00137_26 - Number plate lighting for tractors with flat roof	4-72
4.1.5.45 EFD00138_36 - EAME side lights	4-73
4.1.5.46 EFD00138_37 - NA side lights	4-74

4.1.5.47	EFD00139_9 - Dyna-6 reversing light	4-75
4.1.5.48	EFD00139_10 - Dyna-4 reversing light	4-76
4.1.5.49	EFD00140_58 - High beam lamps and low beam lamps on grille	4-77
4.1.5.50	EFD00140_59 - High beam lamps and low beam lamps on grille + hand rail	4-78
4.1.5.51	EFD00141_83 - Work lights	4-79
4.1.5.52	EFD00141_84 - Work lights + high beam lamps on hand rails	4-80
4.1.5.53	EFD00142_13 - Dyna-6 brake lights	4-81
4.1.5.54	EFD00142_14 - Dyna-4 brake lights	4-82
4.1.5.55	EFD00143_27 - Rotary beacon	4-83
4.1.5.56	EFD00144_8 - Control module	4-84
4.1.5.57	EFD00145_13 - NA trailer connector	4-85
4.1.5.58	EFD00145_14 - EAME trailer connector	4-86
4.1.5.59	EFD00146_9 - Automatic air conditioning back-lighting	4-87
4.1.5.60	EFD00146_10 - Manual air conditioning back-lighting	4-88
4.1.5.61	EFD00146_11 - Manual air conditioning back-lighting for tractors with high-visibility roof	4-89
4.1.5.62	EFD00148_13 - Audible alarm	4-90
4.1.5.63	EFD00150_8 - Air filter vacuum sensor	4-91
4.1.5.64	EFD00151_27 - AGCO Power engine electronic injection for Efficient and Exclusive tractor versions (44/66/74 AWF engine)	4-92
4.1.5.65	EFD00151_28 - AGCO Power engine electronic injection for Essential tractor versions (44/66/74 AWF engine)	4-93
4.1.5.66	EFD00152_18 - DANA suspended front axle	4-94
4.1.5.67	EFD00153_21 - AGCO Power preheating power supply	4-95
4.1.5.68	EFD00154_6 - Fuel preheater	4-96
4.1.5.69	EFD00157_8 - Vistronic	4-97
4.1.5.70	EFD00160_24 - 57 l/min Open Center rear linkage	4-98
4.1.5.71	EFD00160_25 - 100 l/min Open Center rear linkage	4-99
4.1.5.72	EFD00161_11 - Dyna-6 and Dyna-4 front linkage	4-100
4.1.5.73	EFD00167_2 - Triflash for tractors with panoramic cab	4-101
4.1.5.74	EFD00172_6 - Front accessory connection socket_1/2	4-102
4.1.5.75	EFD00172_6 - Front accessory connection socket_2/2	4-103
4.1.5.76	EFD00173_7 - Water-in-fuel sensor of the Tier 4F/Stage IV SCR Technology engine	4-104
4.1.5.77	EFD00174_21 - Dyna-6 air brake without ParkLock - 2/2	4-105
4.1.5.78	EFD00174_23 - Dyna-4 air brake	4-106
4.1.5.79	EFD00175 - Tier4f/Stage IV AGCO Power engine_1/3	4-107
4.1.5.80	EFD00175 - AGCO Power engine 49/66/74/84 AWF_2/3	4-108
4.1.5.81	EFD00175 - AGCO Power engine 49/66/74/84 AWF_3/3	4-109
4.1.5.82	EFD00175_8 - SCR Technology (44/49 AWF engine)	4-110
4.1.5.83	EFD00176_11 - Electrohydraulic blocks	4-111
4.1.5.84	EFD00183_2 - Implement attachment without Isobus	4-112
4.1.5.85	EFD00184_8 - AgCommand™	4-113
<b>5</b>	<b>Harnesses</b>	<b>5-1</b>
5.1	<b>Harnesses</b>	<b>5-5</b>
5.1.1	Identification of harnesses	5-5
5.1.2	Identification table for cable colors	5-8
5.1.3	Harnesses	5-11
5.1.3.1	FAI200 - Engine harness - ACW186006_1/4	5-11
5.1.3.2	FAI200 - Engine harness - ACW186006_2/4	5-12
5.1.3.3	FAI200 - Engine harness - ACW186006_3/4	5-13
5.1.3.4	FAI200 - Engine harness - ACW186006_4/4	5-14
5.1.3.5	FAI201 - Front headlights harness - ACW030858_1/2	5-15
5.1.3.6	FAI201 - Front headlights harness - ACW030858_2/2	5-16
5.1.3.7	FAI202 - Suspended front axle harness - 4380434_1/2	5-17
5.1.3.8	FAI202 - Suspended front axle harness - 4380434_2/2	5-18

5.1.3.9	FAI202 - Suspended front axle harness - ACW030838_1/2 . . . . .	5-19
5.1.3.10	FAI202 - Suspended front axle harness - ACW030838_2/2 . . . . .	5-20
5.1.3.11	FAI203 - Drive train harness External GTA2550 - ACW018206_1/3 . . . . .	5-21
5.1.3.12	FAI203 - Drive train harness external GTA2550 - ACW018206_2/3 . . . . .	5-22
5.1.3.13	FAI203 - Drive train harness external GTA2550 - ACW018206_3/3 . . . . .	5-23
5.1.3.14	FAI203 - Drive train harness external GTA2550 - ACW076051_1/3 . . . . .	5-24
5.1.3.15	FAI203 - Drive train harness external GTA2550 - ACW076051_2/3 . . . . .	5-25
5.1.3.16	FAI203 - Drive train harness external GTA2550 - ACW076051_3/3 . . . . .	5-26
5.1.3.17	FAI203 - Drive train harness external GTA2550 - ACW076057_1/2 . . . . .	5-27
5.1.3.18	FAI203 - Drive train harness external GTA2550 - ACW076057_2/2 . . . . .	5-28
5.1.3.19	FAI210 - Cab drive train harness Dyna-6 short console - ACW005780_1/8 . . . . .	5-29
5.1.3.20	FAI210 - Cab drive train harness Dyna-6 short console - ACW005780_2/8 . . . . .	5-30
5.1.3.21	FAI210 - Cab drive train harness Dyna-6 short console - ACW005780_3/8 . . . . .	5-31
5.1.3.22	FAI210 - Cab drive train harness Dyna-6 short console - ACW005780_4/8 . . . . .	5-32
5.1.3.23	FAI210 - Cab drive train harness Dyna-6 short console - ACW005780_5/8 . . . . .	5-33
5.1.3.24	FAI210 - Cab drive train harness Dyna-6 short console - ACW005780_6/8 . . . . .	5-34
5.1.3.25	FAI210 - Cab drive train harness Dyna-6 short console - ACW005780_7/8 . . . . .	5-35
5.1.3.26	FAI210 - Cab drive train harness Dyna-6 short console - ACW005780_8/8 . . . . .	5-36
5.1.3.27	FAI210 - Cab drive train harness Dyna-6 long console - ACW005784_1/8	5-37
5.1.3.28	FAI210 - Cab drive train harness Dyna-6 long console - ACW005784_2/8	5-38
5.1.3.29	FAI210 - Cab drive train harness Dyna-6 long console - ACW005784_3/8	5-39
5.1.3.30	FAI210 - Cab drive train harness Dyna-6 long console - ACW005784_4/8	5-40
5.1.3.31	FAI210 - Cab drive train harness Dyna-6 long console - ACW005784_5/8	5-41
5.1.3.32	FAI210 - Cab drive train harness Dyna-6 long console - ACW005784_6/8	5-42
5.1.3.33	FAI210 - Cab drive train harness Dyna-6 long console - ACW005784_7/8	5-43
5.1.3.34	FAI210 - Cab drive train harness Dyna-6 long console - ACW005784_8/8	5-44
5.1.3.35	FAI210 - Cab drive train harness Dyna-4 short console - ACW021492_1/8	5-45
5.1.3.36	FAI210 - Cab drive train harness Dyna-4 short console - ACW021492_2/8	5-46
5.1.3.37	FAI210 - Cab drive train harness Dyna-4 short console - ACW021492_3/8	5-47
5.1.3.38	FAI210 - Cab drive train harness Dyna-4 short console - ACW021492_4/8	5-48
5.1.3.39	FAI210 - Cab drive train harness Dyna-4 short console - ACW021492_5/8	5-49
5.1.3.40	FAI210 - Cab drive train harness Dyna-4 short console - ACW021492_6/8	5-50
5.1.3.41	FAI210 - Cab drive train harness Dyna-4 short console - ACW021492_7/8	5-51
5.1.3.42	FAI210 - Cab drive train harness Dyna-4 short console - ACW021492_8/8	5-52
5.1.3.43	FAI210 - Cab drive train harness Dyna-4 long console - ACW022303_1/7	5-53
5.1.3.44	FAI210 - Cab drive train harness Dyna-4 long console - ACW022303_2/7	5-54
5.1.3.45	FAI210 - Cab drive train harness Dyna-4 long console - ACW022303_3/7	5-55
5.1.3.46	FAI210 - Cab drive train harness Dyna-4 long console - ACW022303_4/7	5-56
5.1.3.47	FAI210 - Cab drive train harness Dyna-4 long console - ACW022303_5/7	5-57
5.1.3.48	FAI210 - Cab drive train harness Dyna-4 long console - ACW022303_6/7	5-58
5.1.3.49	FAI210 - Cab drive train harness Dyna-4 long console - ACW022303_7/7	5-59
5.1.3.50	FAI210 - Cab drive train harness Dyna-6 short console - ACW234544_1/10 . . . . .	5-60
5.1.3.51	FAI210 - Cab drive train harness Dyna-6 short console - ACW234544_2/10 . . . . .	5-61
5.1.3.52	FAI210 - Cab drive train harness Dyna-6 short console - ACW234544_3/10 . . . . .	5-62
5.1.3.53	FAI210 - Cab drive train harness Dyna-6 short console - ACW234544_4/10 . . . . .	5-63

5.1.3.54	FAI210 - Cab drive train harness Dyna-6 short console -	
ACW234544_5/10		5-64
5.1.3.55	FAI210 - Cab drive train harness Dyna-6 short console -	
ACW234544_6/10		5-65
5.1.3.56	FAI210 - Cab drive train harness Dyna-6 short console -	
ACW234544_7/10		5-66
5.1.3.57	FAI210 - Cab drive train harness Dyna-6 short console -	
ACW234544_8/10		5-67
5.1.3.58	FAI210 - Cab drive train harness Dyna-6 short console -	
ACW234544_9/10		5-68
5.1.3.59	FAI210 - Cab drive train harness Dyna-6 short console -	
ACW234544_10/10		5-69
5.1.3.60	FAI210 - Cab drive train harness Dyna-4 municipal - ACW242339_1/10	5-70
5.1.3.61	FAI210 - Cab drive train harness Dyna-4 municipal - ACW242339_2/10	5-71
5.1.3.62	FAI210 - Cab drive train harness Dyna-4 municipal - ACW242339_3/10	5-72
5.1.3.63	FAI210 - Cab drive train harness Dyna-4 municipal - ACW242339_4/10	5-73
5.1.3.64	FAI210 - Cab drive train harness Dyna-4 municipal - ACW242339_5/10	5-74
5.1.3.65	FAI210 - Cab drive train harness Dyna-4 municipal - ACW242339_6/10	5-75
5.1.3.66	FAI210 - Cab drive train harness Dyna-4 municipal - ACW242339_7/10	5-76
5.1.3.67	FAI210 - Cab drive train harness Dyna-4 municipal - ACW242339_8/10	5-77
5.1.3.68	FAI210 - Cab drive train harness Dyna-4 municipal - ACW242339_9/10	5-78
5.1.3.69	FAI210 - Cab drive train harness Dyna-4 municipal - ACW242339_10/10	5-79
5.1.3.70	FAI210 - Cab drive train harness Dyna-4 long console - ACW250513_1/9	5-80
5.1.3.71	FAI210 - Cab drive train harness Dyna-4 long console - ACW250513_2/9	5-81
5.1.3.72	FAI210 - Cab drive train harness Dyna-4 long console - ACW250513_3/9	5-82
5.1.3.73	FAI210 - Cab drive train harness Dyna-4 long console - ACW250513_4/9	5-83
5.1.3.74	FAI210 - Cab drive train harness Dyna-4 long console - ACW250513_5/9	5-84
5.1.3.75	FAI210 - Cab drive train harness Dyna-4 long console - ACW250513_6/9	5-85
5.1.3.76	FAI210 - Cab drive train harness Dyna-4 long console - ACW250513_7/9	5-86
5.1.3.77	FAI210 - Cab drive train harness Dyna-4 long console - ACW250513_8/9	5-87
5.1.3.78	FAI210 - Cab drive train harness Dyna-4 long console - ACW250513_9/9	5-88
5.1.3.79	FAI210 - Cab drive train harness Dyna-4 short console -	
ACW277796_1/10		5-89
5.1.3.80	FAI210 - Cab drive train harness Dyna-4 short console -	
ACW277796_2/10		5-90
5.1.3.81	FAI210 - Cab drive train harness Dyna-4 short console -	
ACW277796_3/10		5-91
5.1.3.82	FAI210 - Cab drive train harness Dyna-4 short console -	
ACW277796_4/10		5-92
5.1.3.83	FAI210 - Cab drive train harness Dyna-4 short console -	
ACW277796_5/10		5-93
5.1.3.84	FAI210 - Cab drive train harness Dyna-4 short console -	
ACW277796_6/10		5-94
5.1.3.85	FAI210 - Cab drive train harness Dyna-4 short console -	
ACW277796_7/10		5-95
5.1.3.86	FAI210 - Cab drive train harness Dyna-4 short console -	
ACW277796_8/10		5-96
5.1.3.87	FAI210 - Cab drive train harness Dyna-4 short console -	
ACW277796_9/10		5-97
5.1.3.88	FAI210 - Cab drive train harness Dyna-4 short console -	
ACW277796_10/10		5-98
5.1.3.89	FAI210 - Cab drive train harness Dyna-6 municipal - ACW281070_1/11	5-99
5.1.3.90	FAI210 - Cab drive train harness Dyna-6 municipal - ACW281070_2/11	5-100
5.1.3.91	FAI210 - Cab drive train harness Dyna-6 municipal - ACW281070_3/11	5-101
5.1.3.92	FAI210 - Cab drive train harness Dyna-6 municipal - ACW281070_4/11	5-102
5.1.3.93	FAI210 - Cab drive train harness Dyna-6 municipal - ACW281070_5/11	5-103
5.1.3.94	FAI210 - Cab drive train harness Dyna-6 municipal - ACW281070_6/11	5-104
5.1.3.95	FAI210 - Cab drive train harness Dyna-6 municipal - ACW281070_7/11	5-105

5.1.3.96	FAI210 - Cab drive train harness Dyna-6 municipal - ACW281070_8/11	5-106
5.1.3.97	FAI210 - Cab drive train harness Dyna-6 municipal - ACW281070_9/11	5-107
5.1.3.98	FAI210 - Cab drive train harness Dyna-6 municipal - ACW281070_10/11	5-108
5.1.3.99	FAI210 - Cab drive train harness Dyna-6 municipal - ACW281070_11/11	5-109
5.1.3.100	FAI210 - Cab drive train harness Dyna-6 long console - ACW285998_1/9	5-110
5.1.3.101	FAI210 - Cab drive train harness Dyna-6 long console - ACW285998_2/9	5-111
5.1.3.102	FAI210 - Cab drive train harness Dyna-6 long console - ACW285998_3/9	5-112
5.1.3.103	FAI210 - Cab drive train harness Dyna-6 long console - ACW285998_4/9	5-113
5.1.3.104	FAI210 - Cab drive train harness Dyna-6 long console - ACW285998_5/9	5-114
5.1.3.105	FAI210 - Cab drive train harness Dyna-6 long console - ACW285998_6/9	5-115
5.1.3.106	FAI210 - Cab drive train harness Dyna-6 long console - ACW285998_7/9	5-116
5.1.3.107	FAI210 - Cab drive train harness Dyna-6 long console - ACW285998_8/9	5-117
5.1.3.108	FAI210 - Cab drive train harness Dyna-6 long console - ACW285998_9/9	5-118
5.1.3.109	FAI212 - Lighting harness NA - 4377263_1/3	5-119
5.1.3.110	FAI212 - Lighting harness NA - 4377263_2/3	5-120
5.1.3.111	FAI212 - Lighting harness NA - 4377263_3/3	5-121
5.1.3.112	FAI212 - Lighting harness EAME - 4377264_1/3	5-122
5.1.3.113	FAI212 - Lighting harness EAME - 4377264_2/3	5-123
5.1.3.114	FAI212 - Lighting harness EAME - 4377264_3/3	5-124
5.1.3.115	FAI212 - Lighting harness EAME - ACW125945_1/3	5-125
5.1.3.116	FAI212 - Lighting harness EAME - ACW125945_2/3	5-126
5.1.3.117	FAI212 - Lighting harness EAME - ACW125945_3/3	5-127
5.1.3.118	FAI212 - Lighting harness municipal cab - ACW147899_1/3	5-128
5.1.3.119	FAI212 - Lighting harness municipal cab - ACW147899_2/3	5-129
5.1.3.120	FAI212 - Lighting harness municipal cab - ACW147899_3/3	5-130
5.1.3.121	FAI219 - Cab interior current socket harness - 4290574_1/2	5-131
5.1.3.122	FAI219 - Cab interior current socket harness - 4290574_2/2	5-132
5.1.3.123	FAI219 - Cab interior current socket harness - 4290575_1/2	5-133
5.1.3.124	FAI219 - Cab interior current socket harness - 4290575_2/2	5-134
5.1.3.125	FAI223 - Roof harness standard with manual air conditioning - 4353057_1/3	5-135
5.1.3.126	FAI223 - Roof harness standard with manual air conditioning - 4353057_2/3	5-136
5.1.3.127	FAI223 - Roof harness standard with manual air conditioning - 4353057_3/3	5-137
5.1.3.128	FAI225 - Electric rear-view mirror harness - 4352622_1/2	5-138
5.1.3.129	FAI225 - Electric rear-view mirror harness - 4352622_2/2	5-139
5.1.3.130	FAI227 - Roof harness with automatic air conditioning - 4352621_1/3	5-140
5.1.3.131	FAI227 - Roof harness with automatic air conditioning - 4352621_2/3	5-141
5.1.3.132	FAI227 - Roof harness with automatic air conditioning - 4352621_3/3	5-142
5.1.3.133	FAI228 - Number plate lighting harness - 4353107_1/2	5-143
5.1.3.134	FAI228 - Number plate lighting harness - 4353107_2/2	5-144
5.1.3.135	FAI228 - Number plate lighting harness number plate on flat roof - 4382234_1/2	5-145
5.1.3.136	FAI228 - Number plate lighting harness number plate on flat roof - 4382234_2/2	5-146
5.1.3.137	FAI240 - +12 V permanent fuse box harness - ACW015790	5-147
5.1.3.138	FAI253 - Hand rail harness - 4379352_1/2	5-148
5.1.3.139	FAI253 - Hand rail harness - 4379352_2/2	5-149
5.1.3.140	FAI253 - Hand rail harness with LED - ACW224829_1/2	5-150
5.1.3.141	FAI253 - Hand rail harness with LED - ACW224829_2/2	5-151
5.1.3.142	FAI261 - Isobus harness - 4353130_2/2	5-152
5.1.3.143	FAI261 - Isobus harness - 4353130_1/2	5-153
5.1.3.144	FAI261 - Isobus harness - 4353133	5-154
5.1.3.145	FAI262 - Auto-Guide™ engine harness - 4296810_1/2	5-155
5.1.3.146	FAI262 - Auto-Guide™ engine harness - 4296810_2/2	5-156
5.1.3.147	FAI263 - Auto-Guide™ cab adapter harness - 4353936_1/2	5-157
5.1.3.148	FAI263 - Auto-Guide™ cab adapter harness - 4353936_2/2	5-158

5.1.3.149	FAI263 - Auto-Guide™ cab adapter harness - ACW216732_1/2 . . . . .	5-159
5.1.3.150	FAI263 - Auto-Guide™ cab adapter harness - ACW216732_2/2 . . . . .	5-160
5.1.3.151	FAI264 - Auto-Guide™ roof adapter harness - ACW214003_1/2 . . . . .	5-161
5.1.3.152	FAI264 - Auto-Guide™ roof adapter harness - ACW214003_2/2 . . . . .	5-162
5.1.3.153	FAI264 - Auto-Guide™ roof adapter harness - ACW215610_1/2 . . . . .	5-163
5.1.3.154	FAI264 - Auto-Guide™ roof adapter harness - ACW215610_2/2 . . . . .	5-164
5.1.3.155	FAI265 - Air brake harness Dyna-6- ACW034317_1/2 . . . . .	5-165
5.1.3.156	FAI265 - Air brake harness Dyna-6- ACW034317_2/2 . . . . .	5-166
5.1.3.157	FAI265 - Air brake harness - ACW125716_1/2 . . . . .	5-167
5.1.3.158	FAI265 - Air brake harness - ACW125716_2/2 . . . . .	5-168
5.1.3.159	FAI273 - Front linkage harness - Power socket - 4387229_1/2 . . . . .	5-169
5.1.3.160	FAI273 - Front linkage harness - Power socket - 4387229_2/2 . . . . .	5-170
5.1.3.161	FAI283 - TopDock harness - 4377536_1/2 . . . . .	5-171
5.1.3.162	FAI283 - TopDock harness - 4377536_2/2 . . . . .	5-172
5.1.3.163	FAI287 - ALO loader harness external without multi-function armrest - 4378794_1/2 . . . . .	5-173
5.1.3.164	FAI287 - ALO loader harness external without multi-function armrest - 4378794_2/2 . . . . .	5-174
5.1.3.165	FAI287 - ALO loader harness internal without multi-function armrest - 4378879_1/2 . . . . .	5-175
5.1.3.166	FAI287 - ALO loader harness internal without multi-function armrest - 4378879_2/2 . . . . .	5-176
5.1.3.167	FAI290 - Non-Isobus implement connector harness - 4296266_1/2 . . .	5-177
5.1.3.168	FAI290 - Non-Isobus implement connector harness - 4296266_2/2 . . .	5-178
5.1.3.169	FAI292 - NA direction indicator harness - 4350987 . . . . .	5-179
5.1.3.170	FAI292 - NA direction indicator harness - 4355519_1/2 . . . . .	5-180
5.1.3.171	FAI292 - NA direction indicator harness - 4355519_2/2 . . . . .	5-181
5.1.3.172	FAI292 - NA direction indicator harness - 4376780_1/2 . . . . .	5-182
5.1.3.173	FAI292 - NA direction indicator harness - 4376780_2/2 . . . . .	5-183
5.1.3.174	FAI293 - EAME direction indicator harness - 4350988 . . . . .	5-184
5.1.3.175	FAI294 - Additional heater harness - 4299327_1/2 . . . . .	5-185
5.1.3.176	FAI294 - Additional heater harness - 4299327_2/2 . . . . .	5-186
5.1.3.177	FAI293 - EAME direction indicator harness - 4355520_1/2 . . . . .	5-187
5.1.3.178	FAI293 - EAME direction indicator harness - 4355520_2/2 . . . . .	5-188
5.1.3.179	FAI299 - Battery isolator harness - ACW012324 . . . . .	5-189
5.1.3.180	FAI299 - Battery isolator harness - ACW012326 . . . . .	5-190
5.1.3.181	FAI299 - Battery isolator harness - ACW012368_1/2 . . . . .	5-191
5.1.3.182	FAI299 - Battery isolator harness - ACW012368_2/2 . . . . .	5-192
5.1.3.183	FAI299 - Battery isolator harness - ACW379870_1/2 . . . . .	5-193
5.1.3.184	FAI299 - Battery isolator harness - ACW379870_2/2 . . . . .	5-194
5.1.3.185	FAI300 - Air conditioning shunt harness - 4353106 . . . . .	5-195
5.1.3.186	FAI307 - Datatronic 4 harness - 4353638_1/2 . . . . .	5-196
5.1.3.187	FAI307 - Datatronic 4 harness - 4353638_2/2 . . . . .	5-197
5.1.3.188	FAI307 - Datatronic 4 harness - ACW209580_1/2 . . . . .	5-198
5.1.3.189	FAI307 - Datatronic 4 harness - ACW209580_2/2 . . . . .	5-199
5.1.3.190	FAI311 - Battery/starter positive cable harness - ACW012320 . . . . .	5-200
5.1.3.191	FAI312 - Cab/starter negative cable harness - ACW012366 . . . . .	5-201
5.1.3.192	FAI314 - Alternator harness - ACW012084_1/2 . . . . .	5-202
5.1.3.193	FAI314 - Alternator harness - ACW012084_2/2 . . . . .	5-203
5.1.3.194	FAI317 - Vistronic harness - ACW025338_1/2 . . . . .	5-204
5.1.3.195	FAI317 - Vistronic harness - ACW025338_2/2 . . . . .	5-205
5.1.3.196	FAI325 - Power take-off electric selector harness - 2-speed - 4381659_1/2 . . . . .	5-206
5.1.3.197	FAI325 - Power take-off electric selector harness - 2-speed - 4381659_2/2 . . . . .	5-207
5.1.3.198	FAI325 - Power take-off electric selector harness - 3-speed - 4381660_1/2 . . . . .	5-208



5.1.3.199	FAI325 - Power take-off electric selector harness - 3-speed - 4381660_2/2	5-209
5.1.3.200	FAI353 - Loader harness - ACW138345_1/2	5-210
5.1.3.201	FAI353 - Loader harness - ACW138345_1/2	5-211
5.1.3.202	FAI354 - External loader harness - 4374651_1/2	5-212
5.1.3.203	FAI354 - External loader harness - 4374651_2/2	5-213
5.1.3.204	FAI356 - Mid Mounted cab harness - 4353915_1/2	5-214
5.1.3.205	FAI356 - Mid Mounted cab harness - 4353915_2/2	5-215
5.1.3.206	FAI357 - External Mid Mounted harness - 4353713_1/2	5-216
5.1.3.207	FAI357 - External Mid Mounted harness - 4353713_2/2	5-217
5.1.3.208	FAI360 - TopDock harness - 4377537-1/2	5-218
5.1.3.209	FAI360 - TopDock harness - 4377537-2/2	5-219
5.1.3.210	FAI368 - LED light adapter harness - ACW047423	5-220
5.1.3.211	FAI368 - LED light adapter harness - ACW251462	5-221
5.1.3.212	FAI379 - ABS trailer connector harness - ACW117528_1/2	5-222
5.1.3.213	FAI379 - ABS trailer connector harness - ACW117528_2/2	5-223
<b>6</b>	<b>Hydraulics diagrams</b>	<b>6-1</b>
6.1	<b>Hydraulics diagrams</b>	<b>6-3</b>
6.1.1	Hydraulics diagrams	6-5
6.1.1.1	HFD01048 - Hydraulics diagram: all options, with Mid Mounted, Open Center 57 L/min	6-5
6.1.1.2	HFD01049 - Hydraulics diagram: all options, without Mid Mounted Open Center 57 L/min	6-6
6.1.1.3	HFD01050 - Hydraulics diagram: all options, with Mid Mounted Open Center 100 L/min	6-7
6.1.1.4	HFD01051 - Hydraulics diagram all options, without Mid Mounted Open Center 100 L/min	6-8
6.1.1.5	HFD01052 - Hydraulics diagram: all options, with Mid Mounted Load Sensing	6-9
6.1.1.6	HFD01053 - Hydraulics diagram: all options, without Mid Mounted Load Sensing	6-10
6.1.1.7	HFD01074 - Auxiliary hydraulics diagram with all options, with Mid Mounted Open Center 57 L/min Mother Regulation	6-11
6.1.1.8	HFD01075 - Auxiliary hydraulics diagram with all options, with Mid Mounted Open Center 100 L/min Mother Regulation	6-12
6.1.1.9	HFD01076 - Auxiliary hydraulics diagram with all options with Mid Mounted Load Sensing Mother Regulation	6-13
6.1.1.10	HFD01077 - Auxiliary hydraulics diagram with all options, without Mid Mounted Open Center 57 L/min Mother Regulation	6-14
6.1.1.11	HFD01078 - Auxiliary hydraulics diagram with all options, without Mid Mounted Open Center 100 L/min Mother Regulation	6-15
6.1.1.12	HFD01079 - Auxiliary hydraulics diagram with all options, without Mid Mounted Load Sensing Mother Regulation	6-16
6.1.1.13	HFD02011 - Hydraulics diagram: Load Sensing standard steering system	6-17
6.1.1.14	HFD02012 - Hydraulics diagram: Load Sensing Auto-Guide™/SpeedSteer steering system	6-18
6.1.1.15	HFD03067 - Hydraulics diagram: Open Center tractor braking with trailer brake	6-19
6.1.1.16	HFD03068 - Hydraulics diagram: Open Center tractor braking without trailer brake	6-20
6.1.1.17	HFD03069 - Hydraulics diagram: Load Sensing tractor braking with trailer brake	6-21
6.1.1.18	HFD03070 - Hydraulics diagram: Load Sensing tractor braking without trailer brake	6-22
<b>7</b>	<b>Pneumatic diagrams</b>	<b>7-1</b>
7.1	<b>Pneumatic diagrams</b>	<b>7-3</b>

7.1.1 Pneumatic diagrams . . . . .	7-5
7.1.1.1 PFD01009 - Pneumatic diagram . . . . .	7-5
7.1.1.2 PFD01025 - Pneumatic diagram (Mother Regulation) . . . . .	7-6
<b>8 Adjustments, bleeding and calibrations . . . . .</b>	<b>8-1</b>
<b>8.1 Bleeding . . . . .</b>	<b>8-3</b>
8.1.1 Bleeding the main brake system . . . . .	8-3
8.1.1.1 Bleeding procedure . . . . .	8-4
8.1.2 Bleeding the trailer brake system . . . . .	8-5
<b>8.2 Calibrations . . . . .</b>	<b>8-6</b>
8.2.1 Calibrating the automatic disengagement of the differential and 4-wheel drive . . . . .	8-6
8.2.2 Calibration of the forward-travel lever . . . . .	8-8
8.2.3 Forward speed calibration . . . . .	8-10
8.2.4 Front power take-off calibration for Dyna-4/Dyna-6 . . . . .	8-10
8.2.5 Calibration of the Dyna-4 and Dyna-6 PowerShuttle transmission . . . . .	8-11
8.2.6 Calibration of electrohydraulic block . . . . .	8-14
8.2.7 Calibration of the clutch pedal sensor . . . . .	8-15
8.2.8 Calibration of the throttle pedal sensor . . . . .	8-16
8.2.9 Calibrating the rear linkage . . . . .	8-16
8.2.10 Calibrate the suspended front axle. . . . .	8-18
8.2.11 Calibration of the left/right steering angle sensor (WAS) . . . . .	8-20
8.2.12 Calibration of the centring steering angle sensor (WAS) . . . . .	8-27
8.2.13 Left/right steering angle sensor (WAS) calibration error code . . . . .	8-33
8.2.14 Angle sensor (WAS) centring calibration error code . . . . .	8-34
8.2.15 Calibrations to be carried out using the diagnostic tool . . . . .	8-34
8.2.15.1 Joystick calibration . . . . .	8-34
8.2.15.2 Calibrating the hand throttle. . . . .	8-37
8.2.15.3 Calibrating the depth control thumb wheel . . . . .	8-39



# 1. General Information

<b>1.1 General specifications</b> .....	1-3
1.1.1 MF 5700 S models .....	1-3
<b>1.2 Forward speeds</b> .....	1-12
1.2.1 Forward speed at 2200 rpm for all models and tire sizes 16.9R34 .....	1-12
1.2.2 Forward speed at 2200 rpm for all models and 18.4R38 tires .....	1-13
<b>1.3 Dimensions and weights</b> .....	1-15
1.3.1 Dimensions and weights .....	1-15
<b>1.4 Attachment points</b> .....	1-18
1.4.1 Attachment points .....	1-18
<b>1.5 capacities</b> .....	1-20
1.5.1 capacities .....	1-20
<b>1.6 Tightening torques, retaining compounds and sealing products</b> .....	1-21
1.6.1 Retaining compounds and sealing products .....	1-21
1.6.2 Tightening torques for screws and nuts .....	1-22
1.6.3 Tightening torques for hydraulic unions .....	1-26
<b>1.7 Units of measurement</b> .....	1-30
1.7.1 Conversion table .....	1-30



## 1.1 General specifications

### 1.1.1 MF 5700 S models

Engine					
Model	MF 5709 S	MF 5710 S	MF 5711 S	MF 5712 S	MF 5713 S
Brand	AGCO Power				
Type	44 AWFC				
Nominal power hp ISO (kW) at an engine speed of 2200 rpm	90 (66)	95 (70)	105 (77)	115 (85)	125 (92)
Maximum power hp ISO (kW) at an engine speed of 2000 rpm	95 (70)	100 (74)	110 (81)	120 (88)	130 (96)
Maximum PTO power HP SAE (kW) at an engine speed of 2000 rpm	75 (55)	81 (60)	90 (66)	101 (75)	109 (80)
Maximum torque, Nm	405 Nm	420 Nm	468 Nm	502 Nm	545 Nm
Displacement in liters	4.4				
Piston travel	120 mm				
Piston diameter	108 mm				
Compression ratio	17,4 bar: 1 bar				
Number of cylinders	4				
Idle speed, hand brake engaged	750 rpm				
Idle speed, hand brake disengaged	850 rpm				
Nominal speed	2100 rpm				
Maximum speed	2260 rpm				
Engine weight	430 kg				
High-pressure pump brand	Bosch				
High-pressure pump type	CB18				
Firing order	1-2-4-3				
Maximum pressure in the high-pressure system	1800 bar				
Injector brand	Bosch				
Injector type	CRI 2.2				
Charge pump type	Manual				

Engine					
Model	MF 5709 S	MF 5710 S	MF 5711 S	MF 5712 S	MF 5713 S
Fuel prefilter filtration capacity	10 $\mu$				
Main fuel filter filtration capacity	5 $\mu$				
Low-pressure system pressure at minimum speed	0,5 bar to 1 bar				
Low-pressure system pressure at maximum speed	0,5 bar to 1 bar				
Recommended oil:	API CJ4 or ACEA E9				
Maximum operating tilt (precautions)	25° pitch				
	20° roll				
Oil/fuel consumption	Maximum 0.2%				
Lubrication system	Gear pump				
Oil cooling system	Oil/water heat exchanger				
Oil pressure at minimum speed	1,5 bar				
Oil pressure at maximum speed	2,5 bar to 5 bar depending on the temperature				
Relief valve adjustment pressure	5 bar (spring pressure)				
Air suction type	Turbocharged with air/air intercooler				
Air preheating type	Grid heater with relay controlled by the ECU				
Number of valves	16				
Valve clearance value	0,35 mm (inlet and exhaust)				
Engine cooling system	Coolant				
Fan type	Vistronic				
Thermostat begins to open at	83 °C				
Coolant temperature	-35 °C to 106 °C				
Air compressor brand for the brake system	Knorr Bremse				
Type of compressor	Piston				
Pressure range:	6,5 bar to 8 bar				
Block preheater	110 or 220 volts				
Fuel preheater	Not available				

Engine	
Model	MF 5709 S    MF 5710 S    MF 5711 S    MF 5712 S    MF 5713 S
Urea preheater	Tank: coolant
Exhaust fumes recirculation system	Pump module and supply lines: electric
DOC + SCR system (Diesel Exhaust Fluid (DEF) injection)	DOC with metal substrate (exhaust fumes oxidation catalyzer)
	SCR Technology with ceramic substrate (exhaust fume treatment)
Safety system	NOx sensors at exhaust inlet and outlet
Device brand	Bosch Denox 2.2+
Type of control	Engine controller EEM4
Urea solidification temperature	-11 °C
Oil vapor recirculation system	Closed system breather (CCV)
Belt: Air conditioning compressor/left-hand alternator	Poly V belt
Belt: Fan/right-hand alternator	Poly V belt
Belt: Air compressor	Poly V belt

Rear axle transmission	
Gearbox type	Dyna-4 GBA 25 or Dyna-6 GBA 25
Number of ratios	4
Number of ranges	4 or 6
Number of gears	16/16 or 24/24
Super creeper gears	13.68/1
Number of gears with super creeper gears	32/32
Maximum speed	40 km/h
Rear axle type	GPA54
Number of pinion/crown wheel teeth	10/47
Rear axle ratio	25.179
4WD ratio	0.775
Final drive type	GPA54
Final drive reduction ratio	(61+14)/14



Rear axle transmission	
Maximum 4WD clutch torque	180 daNm
Number of 4WD disks	6 disks
Main brake type	Multidisc ball ramp
Number of disks per side	5
Braking pressure	-
Parking brake type	Hand brake
Trailer brake type	Hydraulic and/or pneumatic with built-in antifreeze pump
Pneumatic trailer braking pressure	6,9 bar to 8,3 bar
Hydraulic trailer braking pressure	0 to 150 bar
Maximum operating tilt - pitch (front/rear)	25°
Maximum operating tilt - roll (right/left)	22°
Maximum operating tilt - combined	22°
Total loaded weight supported by rear axle	4-wheel drive: 6400 kg
	2-wheel drive: 6000 kg

Two-wheel drive front axle	
Front axle brand	LODI 140 CP

Four-wheel drive front axle	
Brand	DANA
Supplier reference - suspended axle	730/563
Supplier reference - fixed axle	730/563
Suspended front axle weight	-
Fixed front axle weight	278 kg
Number of differential disks	-
Total ratio for fixed and suspended front axle	14.57
Axle type	Suspended or fixed
Total loaded weight supported by front axle	-
Rotational direction	Anti-clockwise
Recommended oil type (beam and final drive)	SAE85W90 (API GL4-MIL L-2105)
Ratio for fixed and suspended axle final drive	6

Four-wheel drive front axle	
Number of pinion/crown wheel teeth	14/34
Maximum steering angle	4-wheel drive: 55°
	2-wheel drive: 52°
Oscillation angle	± 9°
Type of oscillation stop	Mechanical
Suspension type	Hydraulics
Suspension ram diameter	2 mm x 45 mm/35 mm
Suspension ram stroke	140 mm
Hydraulic control unit brand	Husco
Hydraulic control unit nominal pressure	190 bar
Number of accumulators	2
Volume/pressure of accumulators	0,75 l: 70 bar
	2 l: 40 bar
Suspension sensor type	Angular potentiometer.
Steering sensor type	Angular potentiometer.
Brake type	Combined with the rear brake
Factor K	1.339

Spool valves	
System type	Open Center (OC) 57 l/min or 100 l/min Closed Center Load Sensing (CCLS) 110 l/min
Flow rate	57 l/min or 100 l/min (OC) 110 l/min (CCLS)
High-pressure pump type	Bosch Rexroth gear pump(s) (OC) Bosch Rexroth piston pump (CCLS)
High-pressure pump displacement	19 cm <sup>3</sup> (OC 57 l/min) 19 cm <sup>3</sup> + 14 cm <sup>3</sup> (OC 100 l/min) 45 cm <sup>3</sup> (CCLS)
High-pressure pump rotational speed	3042 rpm (OC)
	865 rpm (CCLS)
High-pressure pump maximum flow rate	57 l/min or 100 l/min (OC) 110 l/min (CCLS)
High-pressure pump maximum pressure	200 bar

Spool valves	
Maximum quantity of oil to add for heavy implements	25 l
Maximum exportable oil quantity (without adding oil)	24 l
Maximum exportable oil quantity (adding oil)	49 l
Charge pump type	Suction (OC) 60 cm <sup>3</sup> gear pump (CCLS 110 l/min)
Main relief valve adjustment pressure	195 bar ± 5 bar (OC) 197 bar ± 5 bar (CCLS)
Number of spool valves (maximum)	4
Number of front "push-pull" connectors (maximum)	2
Number of rear "push-pull" connectors (maximum)	8
Maximum flow rate per spool valve	57 l/min or 100 l/min (OC) 100 l/min (CCLS)
Spool valve control type	Mechanical
Recommended oil:	According to MF CMS M 1145 specification

Steering	
Steering type	Hydrostatic
Type of control	Steering wheel
Orbitrol displacement	2-wheel drive: 80 cm <sup>3</sup>
	4-wheel drive: 125 cm <sup>3</sup>
Steering ram diameter	2-wheel drive: 63 mm x 36 mm
	4-wheel drive: 70 mm x 40 mm
Steering ram stroke	2-wheel drive: 2 x 80 mm
	4-wheel drive: 2 x 108 mm
Working pressure	170 bar - 175 bar
Pressure relief valve adjustment pressure	170 bar - 175 bar
Shock valve adjustment pressure	225 bar - 245 bar
Oil recommended for steering	According to MF CMS M1145 specification

Thank you so much for reading.  
Please click the “Buy Now!”  
button below to download the  
complete manual.



After you pay.

You can download the most  
perfect and complete manual in  
the world immediately.

Our support email:

[ebooklibonline@outlook.com](mailto:ebooklibonline@outlook.com)