

**Operator's Manual**



# **Rubber Track Tractor**

**1149MT**

TABF11xxxJxxx1001-

**1154MT**

**1159MT**

**1165MT**



# Rubber Track Tractor

<b>1</b>	<b>Safety</b>	<b>13</b>
<b>1.1</b>	<b>Safety Information</b>	<b>15</b>
1.1.1	Operator Manual	15
1.1.2	Safety symbol	15
1.1.3	Safety messages	15
1.1.4	Information messages	15
1.1.5	Safety signs	16
1.1.6	Important safety information	16
1.1.7	General hazard information	17
1.1.8	Pressurized air	18
1.1.9	Asbestos information	18
1.1.10	Electrical storm injury prevention	18
1.1.11	Mount and dismount the machine	18
1.1.12	Before you start the engine	19
1.1.13	Start the engine	19
1.1.14	Before operation	19
1.1.15	Procedures for operation	19
1.1.16	Park the machine	20
1.1.17	Operator station	20
1.1.18	Cut and crush prevention	21
1.1.19	Rollover protective structure	21
1.1.20	Burn prevention	22
1.1.21	Coolant	22
1.1.22	Oils	22
1.1.23	High pressure lines	22
1.1.24	Fluid penetration	23
1.1.25	Batteries	23
1.1.26	Exhaust fumes	24
1.1.27	Noise prevention	25
1.1.28	Fire and explosion prevention	25
1.1.29	Fire extinguisher	26
1.1.30	Public road transportation	26
<b>1.2</b>	<b>Safety signs and labels</b>	<b>27</b>
<b>1.3</b>	<b>Engine safety signs</b>	<b>28</b>
1.3.1	Engine oil filter	29
1.3.2	Belt routing	29
1.3.3	Informational - cab air conditioning	29
1.3.4	Separator filter	29
1.3.5	Fuel filter	30
1.3.6	Hot surface	30
1.3.7	High pressure hazard	30
1.3.8	Entanglement	31
1.3.9	Entanglement	31
1.3.10	Run over hazard	31
1.3.11	Fuel filter	31
1.3.12	Separator filter	32
1.3.13	Informational - engine air cleaner	32
1.3.14	Engine oil filter	32
1.3.15	Ether	32
1.3.16	Hot pressurized coolant	33
1.3.17	Engine oil sign	33
1.3.18	No step	33

<b>1.4</b>	<b>Chassis safety signs</b>	<b>34</b>
1.4.1	Engine cover support	35
1.4.2	Radiation hazard	35
1.4.3	Operators manual	35
1.4.4	Torque	35
1.4.5	Ultra low sulfur diesel fuel	36
1.4.6	Fall off hazard	36
1.4.7	Pinch hazard	36
1.4.8	Tiedown	36
1.4.9	Lift	37
1.4.10	Rear rollover	37
1.4.11	Crush warning	37
1.4.12	Power take off	37
1.4.13	Transmission oil fill	38
1.4.14	Torque	38
1.4.15	Torque	38
1.4.16	No step	38
<b>1.5</b>	<b>Cab safety signs</b>	<b>39</b>
1.5.1	Run-over hazard	40
1.5.2	Roll-over hazard	40
1.5.3	Bystander notification	40
1.5.4	Operators manual	40
1.5.5	Park brake	41
1.5.6	Installation date	41
1.5.7	Alternate exit	41
<b>1.6</b>	<b>Hydraulic safety signs</b>	<b>42</b>
1.6.1	High pressure hazard	43
1.6.2	High pressure fluid	43
1.6.3	Hydraulic couplers	43
1.6.4	Hydraulic oil filter	43
1.6.5	Oil level	44
<b>1.7</b>	<b>Electrical safety signs</b>	<b>45</b>
1.7.1	Rear terminal mini fuse relay	46
1.7.2	Fuse / relays	46
1.7.3	Electrical hazard	46
1.7.4	Battery explosion	46
1.7.5	12 volt	47
1.7.6	Electrical ground	47
1.7.7	Wire access	47
1.7.8	Battery shut off	47
<b>2</b>	<b>Introduction</b>	<b>49</b>
<b>2.1</b>	<b>Machine identification information</b>	<b>51</b>
<b>2.2</b>	<b>Serial number definition</b>	<b>53</b>
<b>2.3</b>	<b>Intended use</b>	<b>54</b>
<b>2.4</b>	<b>Proper disposal of waste</b>	<b>55</b>
<b>2.5</b>	<b>Pre-Delivery</b>	<b>56</b>
2.5.1	Pre-delivery checklist	56
<b>2.6</b>	<b>EC -Declaration of Conformity</b>	<b>57</b>
<b>3</b>	<b>Operation</b>	<b>59</b>
<b>3.1</b>	<b>General inspection</b>	<b>65</b>
3.1.1	Walk-around inspection	65
<b>3.2</b>	<b>Start the engine</b>	<b>67</b>
3.2.1	Pre-start checks	67
3.2.2	Start the engine	67

3.2.3	Start the engine in normal conditions	67
3.2.4	Start the engine with jumper cables	68
<b>3.3</b>	<b>Engine start switch</b>	<b>69</b>
<b>3.4</b>	<b>Monitor mounting bar</b>	<b>70</b>
<b>3.5</b>	<b>Lamp switches</b>	<b>71</b>
3.5.1	Multifunction light switch on the steering column	71
3.5.2	Extremity lamps	72
3.5.3	Interior lamps	72
3.5.4	Courtesy lamp	72
3.5.5	Cab switches	73
3.5.6	Exterior courtesy lamps	74
3.5.7	Lighting shutdown delay	74
3.5.8	Rotating beacon	75
3.5.9	Backlighting for switches in the cab	75
<b>3.6</b>	<b>Dash panel</b>	<b>76</b>
<b>3.7</b>	<b>Steering wheel</b>	<b>79</b>
3.7.1	Horn	79
3.7.2	Steering wheel tilt lever	79
<b>3.8</b>	<b>Mirrors</b>	<b>80</b>
3.8.1	Inside rear view mirror	80
3.8.2	Outside rear view mirrors	80
<b>3.9</b>	<b>Radio</b>	<b>81</b>
3.9.1	Steering wheel controls	81
3.9.2	Blue tooth microphone	81
<b>3.10</b>	<b>Windows</b>	<b>82</b>
3.10.1	Window sun screen	82
3.10.2	Open the rear window	82
3.10.3	Window washer compartment	82
3.10.4	Rear window as an alternate exit	83
3.10.5	Exit the cab in an emergency	83
<b>3.11</b>	<b>Storage and literature compartments</b>	<b>84</b>
<b>3.12</b>	<b>Operator seat</b>	<b>85</b>
3.12.1	Armrest adjustment	85
3.12.2	Standard operator seat	85
3.12.3	Heated and ventilated seats	87
3.12.4	Deluxe heated - vented seat	88
3.12.5	Instructor seat	89
3.12.6	Seat belts	90
3.12.7	Operator presence functionality	90
<b>3.13</b>	<b>Exterior tool box</b>	<b>91</b>
<b>3.14</b>	<b>Heating and air conditioning controls</b>	<b>92</b>
3.14.1	Automatic temperature controls	92
3.14.2	Manual temperature control system	93
<b>3.15</b>	<b>Vent locations</b>	<b>94</b>
<b>3.16</b>	<b>Machine management center</b>	<b>95</b>
3.16.1	Terminal	95
3.16.2	Machine management center version information	96
3.16.3	Set the measurement units	96
3.16.4	Set the language	98
3.16.5	Set the decimal display	99
3.16.6	Set the time and date	99
3.16.7	Terminal settings	100
3.16.8	Applications	102
3.16.9	Select an auxiliary input	103
3.16.10	View the screens	104

3.16.11	Engine . . . . .	104
3.16.12	Transmission . . . . .	106
3.16.13	Hydraulic . . . . .	107
3.16.14	Powertrain protection software (PPS) . . . . .	108
3.16.15	Measure INST (instantaneous) . . . . .	108
3.16.16	Measures - field . . . . .	109
3.16.17	Measures - fuel . . . . .	110
3.16.18	Memory . . . . .	110
3.16.19	Power management . . . . .	113
3.16.20	Tractor settings . . . . .	114
3.16.21	Slip alarm . . . . .	115
3.16.22	ISO 11783 Class 3 . . . . .	117
3.16.23	Service intervals . . . . .	118
3.16.24	Headland management . . . . .	122
3.16.25	Headland management icon identification . . . . .	125
3.16.26	DTC (diagnostic trouble codes) stored or active . . . . .	127
3.16.27	Track tension . . . . .	128
3.16.28	3-point linkage . . . . .	129
3.16.29	Slip calibration . . . . .	132
3.16.30	Steering calibration . . . . .	134
3.16.31	Inching pedal calibration . . . . .	136
3.16.32	Radar calibration . . . . .	136
3.16.33	Enable the video camera - software version 3.2 and before . . . . .	138
<b>3.17</b>	<b>Air system operation . . . . .</b>	<b>140</b>
3.17.1	Air system operation . . . . .	140
3.17.2	Air trailer brake couplers . . . . .	140
3.17.3	Air hose connection . . . . .	141
<b>3.18</b>	<b>Machine control . . . . .</b>	<b>142</b>
3.18.1	Throttle control . . . . .	142
3.18.2	Decelerator - if equipped . . . . .	142
3.18.3	Power management . . . . .	142
3.18.4	Brake control . . . . .	143
	3.18.4.1 Service brakes . . . . .	143
3.18.5	Hydraulic trailer brake if equipped . . . . .	144
3.18.6	Park brake . . . . .	144
3.18.7	Manual parking brake handle . . . . .	145
<b>3.19</b>	<b>Overweight protection strategy (OWPS) . . . . .</b>	<b>146</b>
<b>3.20</b>	<b>Inching pedal control . . . . .</b>	<b>147</b>
<b>3.21</b>	<b>Transmission . . . . .</b>	<b>148</b>
3.21.1	Transmission control . . . . .	148
3.21.2	Machine ground speeds . . . . .	148
3.21.3	Transmission control lever . . . . .	149
3.21.4	Transmission shifting diagram . . . . .	149
3.21.5	Preselect a gear before you move . . . . .	149
3.21.6	Use of the inching clutch control . . . . .	150
3.21.7	Operate the shuttle shift . . . . .	150
3.21.8	Speed match . . . . .	151
<b>3.22</b>	<b>Hydraulic controls . . . . .</b>	<b>152</b>
3.22.1	Hydraulic control valve operation . . . . .	152
3.22.2	Roading lockout switch for the hydraulic control levers . . . . .	154
<b>3.23</b>	<b>General hydraulic connections . . . . .</b>	<b>155</b>
3.23.1	General hydraulic connections . . . . .	155
3.23.2	Connect hoses to the quick couplers . . . . .	155
3.23.3	Disconnect hoses from the quick couplers . . . . .	156
3.23.4	Hydraulic flow management . . . . .	156
3.23.5	Hydraulic motors . . . . .	156
3.23.6	Selection of hydraulic motors . . . . .	156

3.23.7	Single acting cylinders . . . . .	157
3.23.8	Connect a double acting cylinder . . . . .	157
3.23.9	Connect hydraulic motors to the control valves . . . . .	157
3.23.10	Connect a grain cart with an auger motor . . . . .	158
3.23.11	Semi - mounted vacuum planter with the lift assist wheels . . . . .	159
3.23.12	Connect the vacuum planter . . . . .	160
3.23.13	Connect the air seeder or the grain drill . . . . .	160
3.23.14	Connect the spray system pump . . . . .	162
3.23.15	Connect the auxiliary implement controls . . . . .	162
3.23.16	Hydraulic power beyond . . . . .	163
3.23.17	Connect a hydraulic motor to power beyond . . . . .	163
3.23.18	Connect the auxiliary implement control valve with load sense . . . . .	164
3.23.19	Connect the auxiliary implement control valve without load sense . . . . .	164
3.23.20	Auxiliary implement control valve bank . . . . .	164
3.23.21	Connect the hydraulic motor with the flow control valve . . . . .	165
<b>3.24</b>	<b>Electrical system . . . . .</b>	<b>166</b>
3.24.1	Radar unit . . . . .	166
3.24.2	Radar connector . . . . .	166
3.24.3	Battery disconnect switch . . . . .	167
3.24.4	Single pole connectors . . . . .	167
3.24.5	Auxiliary power switch . . . . .	167
3.24.6	Trailer connector . . . . .	168
3.24.7	Put the implement cable into the cab . . . . .	168
3.24.8	ISO 11783 connector . . . . .	168
<b>3.25</b>	<b>3-point linkage . . . . .</b>	<b>170</b>
3.25.1	Console controls . . . . .	170
3.25.2	3-point linkage . . . . .	170
3.25.3	Adjust the 3-point linkage control lever . . . . .	170
3.25.4	Draft control . . . . .	171
3.25.5	Slip sensitivity . . . . .	172
3.25.6	Raise/lower switch for the 3-point linkage . . . . .	173
3.25.7	Use the external raise lower switch . . . . .	173
3.25.8	Level the implement . . . . .	174
3.25.9	Adjust the top link . . . . .	174
3.25.10	Adjust the draft arm . . . . .	174
3.25.11	Lift linkages and quick hitch . . . . .	175
3.25.12	Adjust the lift links . . . . .	176
3.25.13	Replace the rubber stops on the wide swing drawbar . . . . .	177
3.25.14	Replace the wear plates and the rubber stops on the standard drawbar . . . . .	177
<b>3.26</b>	<b>Steerable 3-point linkage . . . . .</b>	<b>178</b>
3.26.1	Steerable hitch functionality . . . . .	178
<b>3.27</b>	<b>Capture the steerable 3-point linkage . . . . .</b>	<b>180</b>
<b>3.28</b>	<b>3-point linkage lift assist . . . . .</b>	<b>181</b>
<b>3.29</b>	<b>Connect the implements . . . . .</b>	<b>182</b>
3.29.1	Connect the implements to the 3-point linkage . . . . .	182
3.29.2	Connect the implements to the quick hitch . . . . .	182
<b>3.30</b>	<b>Disconnect the implements . . . . .</b>	<b>183</b>
3.30.1	3-point hitch implements . . . . .	183
3.30.2	Quick Hitch implements . . . . .	183
<b>3.31</b>	<b>Drawbar . . . . .</b>	<b>184</b>
3.31.1	Category three pin with adapter plate for category four drawbar . . . . .	184
3.31.2	Category four pin with adapter plate for the category five drawbar . . . . .	184
3.31.3	Drawbar . . . . .	184
3.31.4	Connect drawbar implements . . . . .	185
3.31.5	Wide swing drawbar . . . . .	186
3.31.6	Controlled drawbar . . . . .	186
3.31.7	Connect category four drawbar implements . . . . .	187

3.31.8	Connect category five drawbar implements . . . . .	187
3.31.9	Adjust the wide swing drawbar support . . . . .	188
3.31.10	Safety chain . . . . .	189
3.31.11	Implement hook up . . . . .	189
<b>3.32</b>	<b>Power take off (PTO)</b> . . . . .	<b>190</b>
3.32.1	Operate the power take-off . . . . .	190
3.32.2	Power take-off shaft . . . . .	191
3.32.3	Connect the power take-off implements . . . . .	191
<b>3.33</b>	<b>Tow and transport</b> . . . . .	<b>192</b>
3.33.1	Operate the machine on the road . . . . .	192
3.33.2	Operate on the road with a 3-point linkage mounted implement . . . . .	193
3.33.3	High speed road operation . . . . .	193
3.33.4	Basic towing . . . . .	193
3.33.5	Tow a stuck machine . . . . .	194
3.33.6	Tow a machine with a dead engine . . . . .	194
3.33.7	Accumulator without pressure . . . . .	195
3.33.8	Transport the machine . . . . .	196
<b>3.34</b>	<b>Performance recommendations</b> . . . . .	<b>197</b>
3.34.1	Machine performance . . . . .	197
<b>3.35</b>	<b>Tracks</b> . . . . .	<b>198</b>
3.35.1	Track selection . . . . .	198
3.35.2	Low profile tracks . . . . .	198
3.35.3	General ag tracks . . . . .	198
3.35.4	Extreme application tracks . . . . .	198
<b>3.36</b>	<b>Debris deflectors</b> . . . . .	<b>200</b>
<b>3.37</b>	<b>Machine ballast</b> . . . . .	<b>202</b>
3.37.1	Levels of ballast . . . . .	203
3.37.2	Add weights . . . . .	204
3.37.3	Maximum machine weight . . . . .	204
<b>3.38</b>	<b>Weights</b> . . . . .	<b>206</b>
3.38.1	Combinations of idler weights . . . . .	207
3.38.2	Install the front weights . . . . .	209
3.38.3	Remove the 20 front weights . . . . .	210
3.38.4	Remove the 32 front weights . . . . .	213
3.38.5	Install the idler weight . . . . .	216
3.38.6	Remove the idler weights . . . . .	217
3.38.7	Install the undercarriage weights . . . . .	218
3.38.8	Remove the undercarriage weights . . . . .	219
3.38.9	Measure the slippage . . . . .	220
<b>3.39</b>	<b>Undercarriage</b> . . . . .	<b>221</b>
3.39.1	Undercarriage . . . . .	221
3.39.2	Turn performance . . . . .	222
<b>3.40</b>	<b>Moldboard plough applications</b> . . . . .	<b>224</b>
3.40.1	Moldboard plough applications . . . . .	224
3.40.2	Rollover ploughs . . . . .	225
<b>3.41</b>	<b>Special application machines - towed scrapers</b> . . . . .	<b>226</b>
3.41.1	Ballast for towed scrapers . . . . .	226
3.41.2	Drawbars and hitches for a towed scraper . . . . .	227
3.41.3	Hydraulic connections for a towed scraper . . . . .	227
3.41.4	Connections for hydraulic power beyond - towed scrapers . . . . .	228
3.41.5	Laser level controls - land leveling applications . . . . .	228
3.41.6	Operation guidelines - scraper . . . . .	228
3.41.7	Speed selection - scraper . . . . .	229
<b>4</b>	<b>Maintenance</b> . . . . .	<b>231</b>
<b>4.1</b>	<b>Lubricant viscosities and refill capacities</b> . . . . .	<b>233</b>

4.1.1	Lubricant viscosities for ambient temperatures	233
4.1.1.1	Lubricant viscosities	233
4.1.1.2	Refill capacities	233
<b>4.2</b>	<b>Service intervals</b>	<b>235</b>
4.2.1	Maintenance chart	235
4.2.2	Maintenance schedule	236
<b>4.3</b>	<b>Fuse panel</b>	<b>238</b>
4.3.1	Main fuse panel	238
4.3.2	Fuse block one	239
4.3.3	Fuse block two	240
4.3.4	Fuse relay block one	241
4.3.5	Fuse relay block two	242
4.3.6	Relay and fuse panel for chassis	242
4.3.7	Main fuse	243
<b>4.4</b>	<b>Engine</b>	<b>244</b>
4.4.1	Replace the engine air filter	244
4.4.2	Do a check of the engine oil level	244
4.4.3	Change the engine oil and oil filter	245
4.4.3.1	Examine the used filters	247
4.4.4	Engine oil sample port	247
4.4.5	Engine belts	247
4.4.6	Engine temperature	248
4.4.7	Open the engine cover	248
<b>4.5</b>	<b>Fan drive belt removal and installation</b>	<b>249</b>
4.5.1	Remove the fan drive belt	249
4.5.2	Install the fan drive belt	250
<b>4.6</b>	<b>Fuel system</b>	<b>253</b>
4.6.1	Fuel cap	253
4.6.2	Fill the fuel system	253
4.6.3	Change the prefilter and the fuel filters	254
4.6.4	Fuel water separator	255
4.6.5	Prime the fuel system	255
<b>4.7</b>	<b>SCR system</b>	<b>257</b>
4.7.1	Selective catalytic reduction (SCR) System	257
4.7.2	Supply module	257
4.7.3	Fill the diesel exhaust fluid tank	258
4.7.4	DEF heater circuit fuse	258
4.7.5	DEF storage and shelf life	258
<b>4.8</b>	<b>Cooling system</b>	<b>260</b>
4.8.1	Clean the cooling cores	260
4.8.2	Water valve shutoff	260
4.8.3	Do a check of the engine coolant level	261
4.8.4	Drain the engine coolant	261
4.8.5	Cooling system additives	262
4.8.6	Coolant sample	262
4.8.7	Replace the water temperature thermostat	263
<b>4.9</b>	<b>Flush and refill the cooling system</b>	<b>264</b>
4.9.1	Coolant system fluid	264
4.9.2	Flush the cooling system	264
4.9.3	Refill the cooling system	265
<b>4.10</b>	<b>Hydraulics - check and change system oil</b>	<b>266</b>
4.10.1	Do a check of the hydraulic system oil	266
4.10.2	Change the hydraulic system oil	267
<b>4.11</b>	<b>Hydraulic filters</b>	<b>269</b>
4.11.1	Replace the transmission and steering filter	269
4.11.2	Replace the implement filters	269



4.11.3	Replace the implement case drain filter . . . . .	269
4.11.4	Replace the steering pump case drain filter . . . . .	270
4.11.5	Remove the suction screen . . . . .	271
4.11.6	Replace the transmission oil . . . . .	272
<b>4.12</b>	<b>Cab filtration . . . . .</b>	<b>275</b>
4.12.1	Primary fresh air filter . . . . .	275
4.12.2	Remove the primary air filter . . . . .	275
4.12.3	Filter maintenance . . . . .	275
4.12.4	Clean the filter . . . . .	276
4.12.5	Install the primary air filter . . . . .	276
4.12.6	Remove the recirculation filter . . . . .	276
4.12.7	Install the recirculation filter . . . . .	277
<b>4.13</b>	<b>Maintenance access . . . . .</b>	<b>278</b>
4.13.1	Remove the guards . . . . .	278
4.13.2	Remove the engine fan guards . . . . .	279
<b>4.14</b>	<b>Undercarriage (Mobil trac) system . . . . .</b>	<b>280</b>
4.14.1	Do a check of the oil level for the drive wheel hubs . . . . .	280
4.14.2	Change the drive wheel hub oil . . . . .	280
4.14.3	Do a check of the oil level for the idler wheel and the mid roller wheel hubs . . . . .	281
4.14.4	Change the oil on the idler and the mid roller wheel hub . . . . .	281
4.14.5	Track and undercarriage inspection . . . . .	281
4.14.6	Adjust the gauge spacing . . . . .	282
4.14.7	Measure the gauge spacing . . . . .	288
<b>4.15</b>	<b>Special considerations - scraper . . . . .</b>	<b>290</b>
4.15.1	Belt untracking - scraper . . . . .	290
4.15.2	Weight transfer limit . . . . .	290
4.15.3	Towed scraper operation and inspection . . . . .	291
4.15.4	Scraper setup . . . . .	291
4.15.5	Retrieve a stuck machine / scraper . . . . .	291
<b>4.16</b>	<b>Detension the tracks . . . . .</b>	<b>293</b>
4.16.1	Detension the tracks . . . . .	293
4.16.2	Release the pressure between the nipple and the filler valve . . . . .	294
<b>4.17</b>	<b>Tension the tracks . . . . .</b>	<b>295</b>
4.17.1	Add tension to the tracks . . . . .	295
<b>4.18</b>	<b>Replace the track . . . . .</b>	<b>298</b>
<b>4.19</b>	<b>Track alignment . . . . .</b>	<b>300</b>
4.19.1	Track alignment . . . . .	300
4.19.2	Check the alignment . . . . .	300
4.19.3	Adjust the track alignment . . . . .	301
<b>4.20</b>	<b>Batteries . . . . .</b>	<b>302</b>
4.20.1	Remove the batteries . . . . .	302
4.20.2	Install the batteries . . . . .	303
<b>4.21</b>	<b>Prepare for the cold season . . . . .</b>	<b>305</b>
4.21.1	Cold season . . . . .	305
4.21.2	Cold start . . . . .	305
<b>5</b>	<b>Troubleshooting . . . . .</b>	<b>307</b>
<b>5.1</b>	<b>Heating and air conditioning troubleshooting . . . . .</b>	<b>309</b>
5.1.1	Retrieve diagnostic information from the automatic temperature control unit . . . . .	309
<b>5.2</b>	<b>Electrical system troubleshooting . . . . .</b>	<b>312</b>
<b>5.3</b>	<b>Brake troubleshooting . . . . .</b>	<b>313</b>
<b>5.4</b>	<b>Engine troubleshooting . . . . .</b>	<b>315</b>
5.4.1	Low diesel exhaust fluid (DEF) level . . . . .	319
<b>5.5</b>	<b>Hydraulic troubleshooting . . . . .</b>	<b>321</b>
<b>5.6</b>	<b>3-point linkage troubleshooting . . . . .</b>	<b>323</b>

<b>5.7</b>	<b>Transmission troubleshooting</b>	<b>325</b>
<b>5.8</b>	<b>Steering system troubleshooting</b>	<b>327</b>
<b>5.9</b>	<b>Guidance troubleshooting</b>	<b>332</b>
5.9.1	VarioGuide ready indicator is not on	332
5.9.2	VarioGuide ready indicator is on	333
5.9.3	VarioGuide de-activates during operation	333
<b>5.10</b>	<b>Machine Error Codes</b>	<b>335</b>
5.10.1	Engine error codes	335
5.10.2	Transmission error codes	337
5.10.3	Armrest ECM error codes	342
5.10.4	Auxiliary valve one ECM error codes	346
5.10.5	Auxiliary valve two ECM error codes	347
5.10.6	Auxiliary valve three ECM error codes	347
5.10.7	Auxiliary valve four ECM error codes	348
5.10.8	Auxiliary valve five ECM error codes	348
5.10.9	Auxiliary valve six ECM error codes	349
5.10.10	Front lighting ECM error codes	349
5.10.11	Roof lighting ECM error codes	350
5.10.12	Rear lighting ECM error codes	350
<b>6</b>	<b>Specifications</b>	<b>353</b>
<b>6.1</b>	<b>Engine specifications</b>	<b>355</b>
<b>6.2</b>	<b>Torque specifications</b>	<b>356</b>
6.2.1	Constant torque hose clamps	356
<b>6.3</b>	<b>Dimensions</b>	<b>357</b>
6.3.1	Dimensions	358
<b>6.4</b>	<b>Noise vibration level</b>	<b>359</b>
<b>6.5</b>	<b>Machine specifications</b>	<b>360</b>
<b>6.6</b>	<b>Shipping weights</b>	<b>363</b>
<b>7</b>	<b>Index</b>	<b>365</b>



# 1 Safety

<b>1.1</b>	<b>Safety Information</b>	<b>15</b>
1.1.1	Operator Manual	15
1.1.2	Safety symbol	15
1.1.3	Safety messages	15
1.1.4	Information messages	15
1.1.5	Safety signs	16
1.1.6	Important safety information	16
1.1.7	General hazard information	17
1.1.8	Pressurized air	18
1.1.9	Asbestos information	18
1.1.10	Electrical storm injury prevention	18
1.1.11	Mount and dismount the machine	18
1.1.12	Before you start the engine	19
1.1.13	Start the engine	19
1.1.14	Before operation	19
1.1.15	Procedures for operation	19
1.1.16	Park the machine	20
1.1.17	Operator station	20
1.1.18	Cut and crush prevention	21
1.1.19	Rollover protective structure	21
1.1.20	Burn prevention	22
1.1.21	Coolant	22
1.1.22	Oils	22
1.1.23	High pressure lines	22
1.1.24	Fluid penetration	23
1.1.25	Batteries	23
1.1.26	Exhaust fumes	24
1.1.27	Noise prevention	25
1.1.28	Fire and explosion prevention	25
1.1.29	Fire extinguisher	26
1.1.30	Public road transportation	26
<b>1.2</b>	<b>Safety signs and labels</b>	<b>27</b>
<b>1.3</b>	<b>Engine safety signs</b>	<b>28</b>
1.3.1	Engine oil filter	29
1.3.2	Belt routing	29
1.3.3	Informational - cab air conditioning	29
1.3.4	Separator filter	29
1.3.5	Fuel filter	30
1.3.6	Hot surface	30
1.3.7	High pressure hazard	30
1.3.8	Entanglement	31
1.3.9	Entanglement	31
1.3.10	Run over hazard	31
1.3.11	Fuel filter	31
1.3.12	Separator filter	32
1.3.13	Informational - engine air cleaner	32
1.3.14	Engine oil filter	32
1.3.15	Ether	32
1.3.16	Hot pressurized coolant	33
1.3.17	Engine oil sign	33
1.3.18	No step	33

<b>1.4</b>	<b>Chassis safety signs</b>	<b>34</b>
1.4.1	Engine cover support	35
1.4.2	Radiation hazard	35
1.4.3	Operators manual	35
1.4.4	Torque	35
1.4.5	Ultra low sulfur diesel fuel	36
1.4.6	Fall off hazard	36
1.4.7	Pinch hazard	36
1.4.8	Tiedown	36
1.4.9	Lift	37
1.4.10	Rear rollover	37
1.4.11	Crush warning	37
1.4.12	Power take off	37
1.4.13	Transmission oil fill	38
1.4.14	Torque	38
1.4.15	Torque	38
1.4.16	No step	38
<b>1.5</b>	<b>Cab safety signs</b>	<b>39</b>
1.5.1	Run-over hazard	40
1.5.2	Roll-over hazard	40
1.5.3	Bystander notification	40
1.5.4	Operators manual	40
1.5.5	Park brake	41
1.5.6	Installation date	41
1.5.7	Alternate exit	41
<b>1.6</b>	<b>Hydraulic safety signs</b>	<b>42</b>
1.6.1	High pressure hazard	43
1.6.2	High pressure fluid	43
1.6.3	Hydraulic couplers	43
1.6.4	Hydraulic oil filter	43
1.6.5	Oil level	44
<b>1.7</b>	<b>Electrical safety signs</b>	<b>45</b>
1.7.1	Rear terminal mini fuse relay	46
1.7.2	Fuse / relays	46
1.7.3	Electrical hazard	46
1.7.4	Battery explosion	46
1.7.5	12 volt	47
1.7.6	Electrical ground	47
1.7.7	Wire access	47
1.7.8	Battery shut off	47

## 1.1 Safety Information

### 1.1.1 Operator Manual

This operator manual uses the latest information available at the time of publication. Read the operator manual carefully before operating the machine.

Right-hand and left-hand, as used in the operator manual, is determined by facing the direction that the machine travels when in use.

Photos, illustrations, and data used in the operator manual were current at the time of publishing. Because of possible production changes, each machine can vary. Manufacturer reserves the right to redesign and change the machine as necessary without notification.

### 1.1.2 Safety symbol

The safety symbol tells you about a potentially hazardous area!

Look for the safety symbol in this manual and on the machine. The safety symbols tell you that there is important safety instructions in the manual.



Fig. 1

### 1.1.3 Safety messages

The words DANGER, WARNING or CAUTION are used with the safety symbol. Learn these safety messages and obey the recommended precautions and safety instructions.



**DANGER:**  
If you do not obey the recommended precautions and safety instructions, **DEATH OR INJURY will occur.**



**WARNING:**  
If you do not obey the recommended precautions and safety instructions, **DEATH OR INJURY can occur.**



**CAUTION:**  
If you do not obey the recommended precautions and safety instructions, **INJURY can possibly occur.**



Fig. 2

### 1.1.4 Information messages

The words important and note are not related to personal safety, and are used to give information about the operation and servicing of the machine.

**IMPORTANT:** Identifies special instructions or procedures which, if not followed, can cause damage to the machine, the process, or the area around the machine.

**NOTE:** *Information to make procedures easier.*

---

### 1.1.5 Safety signs

---



**WARNING:**

**Do not remove the safety signs. Replace safety signs that you cannot read, are damaged, or are missing.**

Clean the machine surface with a weak soap and water solution before you replace the safety signs. Replacement safety signs are available from your dealer.

Always make sure that safety signs are in the correct locations and that you can read the safety signs. Illustrations of safety sign locations are in this section.

Keep the safety signs clean. If necessary, use a weak soap and water solution.

---

### 1.1.6 Important safety information

---

**IMPORTANT:** *Any Modifications to the machine or systems not authorized by AGCO will void the AGCO Warranty. This includes, but is not limited to hitches.*



**WARNING:**

**When replacement parts are required for this product, AGCO recommends using AGCO replacement parts or parts with equivalent specifications including, but not limited to, physical dimensions, type, strength and material. Failure to heed this warning can get untimely failures, product damage, personal injury or death.**

Failure to obey basic safety rules and precautions can cause personal injuries during product operation, maintenance, or repair. Know dangerous situations before an injury occurs.

A person must be alert to possible dangers. This person must also have the necessary training, skills and tools to do these operations correctly.

Incorrect operation, lubrication, maintenance or repair of this product can be dangerous and can result in injury or death.

Read and understand all the information about the operation, lubrication, maintenance, and repair before operating on this machine.

The product and this manual give safety precautions and warnings. Bodily injury or death can occur to you or to other persons if all warnings are not heeded.

Not every possible circumstance that can involve a potential danger can be anticipated. The warnings in this publication and on the product are, thus, not all inclusive. If a tool or procedure, not recommended by AGCO, is used, make sure they are safe for everyone.

An operator must make sure the product will not be dangerous or damaged by the operation, lubrication, maintenance or repair procedures selected. Information, specifications, and illustrations in this publication come from information available at the time of publication production.

Specifications, torques, pressures, measurements, adjustments, illustrations, and other items can change at any time. These changes can change the service that is given to the product. Get the complete and most current information before starting a job. AGCO dealers have the most current information available.

## 1.1.7 General hazard information



**CAUTION:**  
**Carefully read the operator's manual before operating the machine. See all instructions and safety rules when operating or doing maintenance.**



Fig. 3

Do not start the engine until the area is free of personnel. Honk the horn two times to alert others. This will help in avoiding personal injury because machine movement can occur.

Know the width of the equipment to keep correct clearance when operating the machine near fences or near boundary obstacles.

Wear a hard hat, protective glasses, and other protective equipment, as required.

Do not wear loose clothing or jewelry that can catch on controls or on other parts of the machine.

Make sure that all protective guards and all covers are attached in position on the machine.



Fig. 4

Keep the machine free from unwanted material. Remove debris, oil, tools, and other items from the deck, from walkways, and from steps.

Secure lunch boxes, tools, and other loose items that are not a part of the machine.

Know the appropriate work location hand signals and the personnel that are authorized to give the hand signals. Get hand signals from one person only.

Never put maintenance fluids into glass containers. Drain all liquids into an approved container.

Discard any drained fluids and discard any filter elements according to local regulations.

Use all cleaning solutions with precaution.

Report all necessary repairs.

Do not let untrained or not approved personnel on the machine.

Do not smoke when servicing an air conditioner. Also, do not smoke if refrigerant gas can be present. Inhaling the fumes that are released from a flame that contacts air conditioner refrigerant can cause bodily harm or death.

Inhaling gas from air conditioner refrigerant through a lighted cigarette can cause bodily harm or death.

Unless being instructed differently, complete the maintenance under the following conditions:

- Turn the battery disconnect switch to "off" position.
- The machine is parked on level ground.
- Implements are lowered to the ground.



## 1. Safety

---

- Transmission control lever is in the park position.
- The engine is stopped.
- The engine start switch is turned off and the switch key is removed.
- The machine has cooled down.

Any additional precautions must be observed based on the conditions and environment where the machine is being used.

---

### 1.1.8 Pressurized air

---

Air under pressure can cause personal injury. When pressurized air is used for cleaning, wear a protective face shield, protective clothing and protective shoes.

The maximum air pressure for cleaning purposes must be below 205 kPa (30 psi).

---

### 1.1.9 Asbestos information

---

AGCO equipment and replacement parts are asbestos free. AGCO recommends the use of only correct AGCO replacement parts.

---

### 1.1.10 Electrical storm injury prevention

---

When lightning is striking in the vicinity of the machine, the operator should not attempt to dismount or mount the machine.

If you are in the operator's station during an electrical storm, stay in the operator's station. If you are on the ground during an electrical storm, stay away from the machine.

---

### 1.1.11 Mount and dismount the machine

---

Mount the machine and dismount the machine only at locations that have steps and/or hand holds. Before mounting the machine, clean the steps and the hand holds. Inspect the stairs and hand holds. Make any necessary repairs.

When dismounting the machine, descend the steps backwards, and maintain a three-point contact with the steps and hand holds. Three-point contact is two feet and one hand or one foot and two hands.

Never mount a moving machine. Never dismount a moving machine. Never jump off the machine except in an emergency.

Do not carry tools or supplies when you try to mount the machine or when you try to dismount the machine. Use a hand line to pull equipment onto the platform.

Do not use any controls as hand holds when you enter the operator compartment or when you exit the operator compartment.

### 1.1.12 Before you start the engine

Start the engine only from the operator compartment. Never short across the starter terminals or batteries. Shorting can damage electrical system or cause unexpected machine movement.

Adjust the seat so full pedal travel can be achieved with operator's back against seat back.

Make sure the machine is equipped with a lighting system sufficient for job conditions. Make sure all machine lights are working properly.

Before starting the engine or moving the machine, make sure no one is under, around or on machine. Make sure area is free of personnel.

To honk horn the key must be turned to "run" to enable the horn. As a warning honk horn twice, to alert others.



Fig. 5

### 1.1.13 Start the engine

Move all hydraulic controls to the hold position before starting the engine.

Make sure the transmission control lever is in the park position.

Diesel engine exhaust contains products of combustion which can be dangerous. Always operate the engine in a well ventilated area. If in a closed in area, vent the exhaust to the outside.



**WARNING:**

**Machine will turn if turning the steering wheel when the transmission control lever is in neutral and the engine is idling.**



**WARNING:**

**Do not use ether at any time. Use will cause engine damage and/or personal injury.**

Do not start the engine until the area is free of personnel to prevent personal injury because of unexpected machine movement.

### 1.1.14 Before operation

Clear all personnel from around the machine and the area.

Clear all obstacles from machine's path. Be careful of dangers, (electrical power lines, ditches, etc).

Make sure all the windows are clean and attached in the closed position.

Adjust the rearview mirrors for best visibility near the machine. Make sure the horn, backup alarm (if equipped) and all other warning devices are working correctly.

On the drawbar-towed implements, fasten a transport chain of sufficient capacity between the machine drawbar support and implement. Give only enough slack in the chain to permit turning.

Only one instructor must be permitted to ride in the machine cab. Instructor must be seated in the instructor seat with the seat belt fastened.

### 1.1.15 Procedures for operation

The machine will turn with the transmission control lever in the neutral position when the engine is operating and the steering wheel is turned.

## 1. Safety

---

Only operate the machine while in the operator's seat. Securely fasten the seat belt while operating the machine. Only operate the controls while the engine is operating.

Check for the correct operation of all the controls and the protective devices.

As a warning honk the horn twice to alert others in the area to prevent personal injury because of machine movement.

During operation of the machine, report any damage recorded. Make any necessary repairs.

A rollover of machine can occur when working on hills, banks, or slopes. A rollover of machine can also occur when crossing ditches, ridges, or other unanticipated obstacles.

Hold the attachments approximately 40 cm (16 in) above the ground level while driving the machine. Do not drive the machine near an overhang, near the edge of a cliff, or near edge of an excavation.

If the machine begins to sideslip on a grade, immediately reduce load and turn machine downhill.

Be careful to avoid any ground condition which will cause machine to tip over.

Keep the machine under control. Do not overload the machine beyond capacity.

Make sure the towing devices are sufficient for the application.

Make sure the components on the 3-point linkage are sufficient for the application.

Connect the trailing equipment only to a drawbar or hitch.

Never straddle a wire cable.

When maneuvering to connect equipment, make sure no personnel are between machine and trailing equipment. Block up hitch of trailing equipment to align equipment with drawbar.

Know the maximum dimensions of the machine.

When operating on icy or muddy roads, reduce the travel speed to prevent losing control of machine.

Reduce travel speed if the stability of the machine is noticeably reduced.

Select a gear that controls machine speed when declining a hill.

Use the service brakes if required, to control machine speed. Never coast down a hill with transmission in neutral.

Do not let passengers anywhere on the machine except on an approved passenger seat. Instructors must have the instructor seatbelt securely fastened during any operation.

---

### 1.1.16 Park the machine

---

1. Park the machine on a solid, level surface.
2. Move the transmission control lever to the park position.
3. Lower all the implements to the ground.
4. Before stopping the engine, move the throttle control lever to the low idle position. Operate the engine at low idle speed for five minutes to let the turbocharger cool.
5. Stop the engine and take the key with you.
6. Chock the front idler wheels or rear drive wheels.
7. Turn the battery disconnect switch to the off position.
8. Remove the battery disconnect switch key.

---

### 1.1.17 Operator station

---

Do not drill holes or weld on the cab rollover protective structure. (ROPS)

Any modifications to the inner operator station must not extend into the operator space.

Any item brought into the cab must not extend into defined operator space. Secure loose items. Objects must not pose an impact hazard in rough terrain or if there is a rollover.

## 1.1.18 Cut and crush prevention

Support the equipment correctly when performing work below the equipment. Do not rely on the hydraulic cylinders to hold up the equipment. An implement can fall if a control lever is moved or if a hydraulic line breaks.

Never start the machine engine by shorting across the starter solenoid terminals. Machine movement can occur causing runovers .

Never make adjustments while the machine is moving or while the engine is operating.

Whenever there are attachment control linkages, the clearance in the linkage area will change with movement of the attachment.

Stay clear of all rotating parts and all moving parts.

Keep objects away from moving fan blades. The fan blades will throw objects and the fan blades can cut.

Do not use a wire tow cable that is kinked or frayed. Wear gloves when touching wire cable.

When hitting a retainer pin, the retainer pin can fly out causing personal injury. Make sure that there are no people in the area when hitting a retainer pin. To prevent eye injury, wear protective glasses when hitting a retainer pin.

Chips or other debris can fly off objects when hitting the objects. Make sure that others are clear of the area before hitting any object.

## 1.1.19 Rollover protective structure

Do not make any modifications to the rollover protective structure (ROPS) as this will change protection provided. Do not change structure by welding, cutting, adding weight, or drilling holes into structure.

Any change not specifically authorized by AGCO invalidates AGCO certification for ROPS. The protection offered by ROPS will be impaired if ROPS has structural damage or alteration. Damage to structure can be caused by a turn over or by falling objects.

Do not mount items (fire extinguishers, first aid kits, work lights, etc.) by welding brackets or drilling holes in ROPS. See dealer for mounting guide lines.

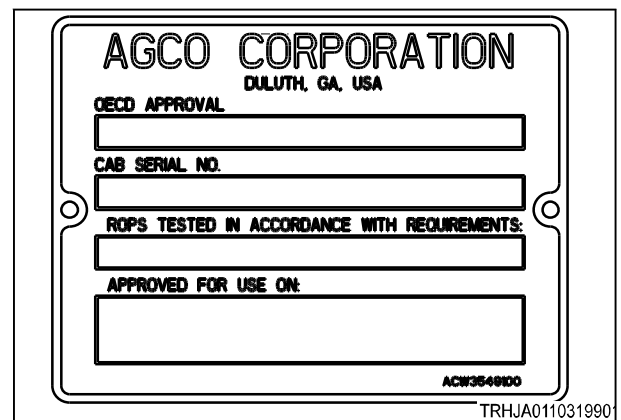


Fig. 6

---

### 1.1.20 Burn prevention

---

Do not touch any part of an operating engine. Other components such as the transmission, the axles and the oil reservoir can also be hot. Let the engine cool before performing any maintenance on the engine. Release all pressure in air, oil, lubrication, fuel and cooling systems before disconnecting any line fittings or related items.



Fig. 7

---

### 1.1.21 Coolant

---

When the engine is at operating temperature, the engine coolant is hot. The coolant is also under pressure. The radiator and all the lines to the heater or engine contain hot coolant.

Any contact with hot coolant or with the steam can cause severe burns. Allow the cooling system components to cool before the cooling system is drained.

Check the coolant level only after the engine has been stopped.

Make sure the filler cap is cool before removing. The filler cap must be cool enough to touch with a bare hand. Remove the filler cap slowly to relieve the pressure.

The cooling system conditioner contains alkali. Alkali can cause personal injury.

Do not allow alkali to contact skin, eyes or mouth.



Fig. 8

---

### 1.1.22 Oils

---

Pressurized hot oil and hot components can cause personal injury. Do not allow hot oil to contact skin. Do not allow hot components to contact skin.

Remove the hydraulic tank filler cap only after the engine has been stopped.

The filler cap must be cool enough to touch with a bare hand. Follow the standard procedure in this manual to remove the hydraulic tank and transmission filler caps.

---

### 1.1.23 High pressure lines

---

Do not bend or strike the high pressure lines. Do not install any lines that are bent or damaged.

Repair any loose or damaged lines. Leaks can cause fires. Consult your dealer for repair or for replacement parts.

**DANGER:**

**Diesel fuel or hydraulic fluid under pressure can penetrate the skin or eyes. This can cause serious personal injury, blindness, or death.**

**1.1.24 Fluid penetration**

Always use a board or cardboard when checking for a leak. Leaking fluid under pressure can penetrate the body tissue. Fluid penetration can cause serious injury and possible death. A pin hole leak can cause severe injury. If fluid is injected into the skin, get treatment immediately. Get treatment from a doctor familiar with this type of injury.

Check the lines, the tubes and the hoses carefully. Do not use your bare hand instead, use a board or cardboard to check for leaks. Tighten all connections to the recommended torque.

Replace the hose if any of the following conditions are present:

- End fittings are damaged or leaking.
- Outer coverings are rubbed or cut.
- Wires are showing.
- Outer coverings are ballooning.
- The flexible part of the hose has a kink.
- Outer coverings have embedded armoring.
- The end fittings are displaced.

**IMPORTANT:** *Take care to contain fluids during the performance of the inspection, the maintenance, the testing, the adjusting, and the repair of the machine. Have a suitable container large enough ready to collect the fluid before opening any compartment or disassembling any component containing fluids. See the local regulations and mandates when discarding fluids.*

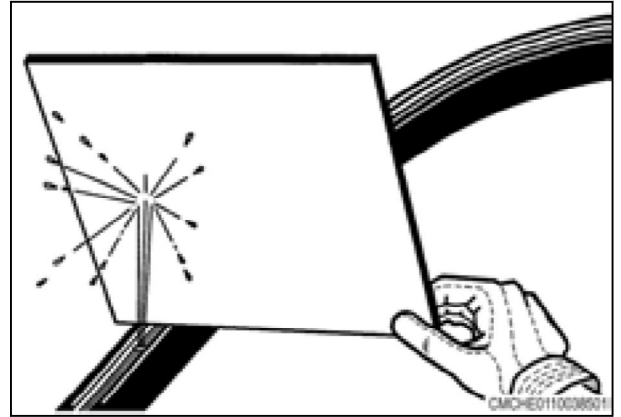


Fig. 9

**1.1.25 Batteries**

A lead acid battery generates flammable and explosive gases. Keep sparks and flames away from the battery.



**WARNING: Sulfuric acid in battery electrolyte is poisonous.**

**The acid is strong enough to burn skin, eat holes in clothing and cause blindness if got into eyes.**

**If acid contacts skin or clothing, flush with water immediately. If acid contacts eyes get immediate medical aid.**

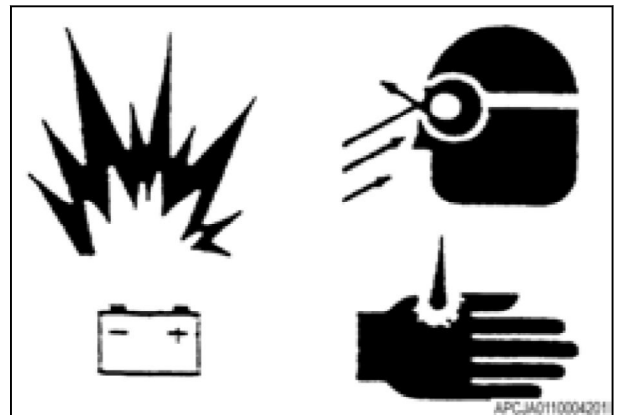


Fig. 10

## 1. Safety

Wash hands after touching batteries and connectors.



**WARNING: Batteries contain electrolyte which is an acid that can cause personal injury.**

**Do not let the electrolyte contact the skin or eyes.**

**Always wear protective glasses for servicing batteries.**



Fig. 11

Never check battery charge by placing a metal object across the terminal posts. Use a voltmeter or a hydrometer.



**WARNING: Gases from a battery can explode.**

**Incorrect jumper cable connections can cause an explosion causing an injury.**

**Keep open flames or sparks away from the top of the battery. Do not smoke in the battery charging areas. To prevent an explosion, never charge a frozen battery.**



Fig. 12

### 1.1.26 Exhaust fumes

Always work in a correct ventilated area.

Engine exhaust fumes can cause sickness or death. If necessary to run engine in a closed area, use correct equipment to safely remove exhaust fumes from area.

Always open the doors and get outside air into area.



Fig. 13

### 1.1.27 Noise prevention

Wear proper hearing protective devices such as earmuffs or earplugs to prevent loss of hearing due to high noise levels.

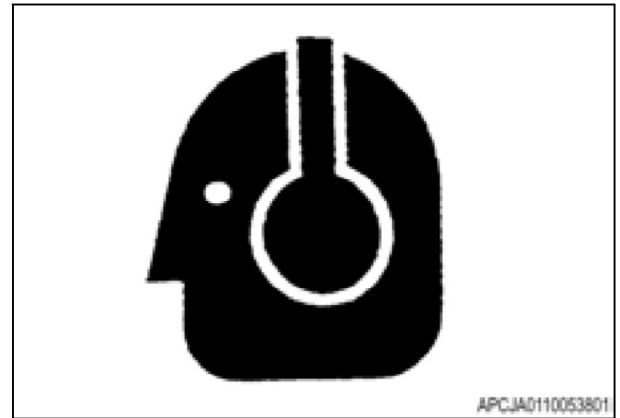


Fig. 14

### 1.1.28 Fire and explosion prevention

Use caution when refueling a machine. Do not smoke while refueling and do not refuel near open flames or sparks. Always stop engine before refueling. Fill fuel tank outdoors.

All fuels, most lubricants, and some coolant mixtures are flammable.

Flammable fluids leaking or spilled onto hot surfaces or electrical components can cause a fire.

Fire may cause personal injury and property damage.

Remove all flammable materials such as fuel, oil, and debris from machine.

Do not let any flammable materials to accumulate on machine.

Store fuels and lubricants in correctly identified containers away from not approved persons. Store rags with oil and any flammable materials in protective containers.

Do not smoke in areas used for storing flammable materials.

Do not operate machine near any flame.

Do not weld on lines or tanks that contain flammable fluids. Do not flame cut lines or tanks containing flammable fluid. Clean any such lines or tanks fully with a nonflammable solvent before welding or flame cutting.

Check all electrical wires daily. Repair any wires loose or frayed before operating machine. Clean and tighten all electrical connections.

Dust generated from repairing nonmetallic hoods or nonmetallic fenders can be flammable and/or

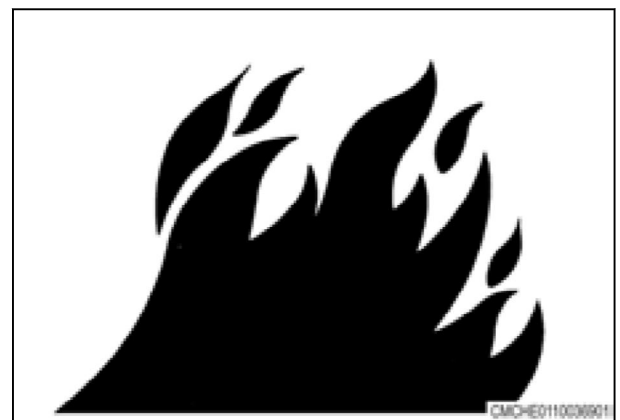


Fig. 15



## 1. Safety

---

explosive. Repair such components in a well ventilated area away from open flames or sparks.

Inspect all lines and hoses for wear or for deterioration and replace if necessary.

Route hoses correctly. Lines and hoses must have sufficient support and secure clamps. Tighten all connections to recommended torque.

---

### 1.1.29 Fire extinguisher

---

Make sure that a fire extinguisher is available and be familiar with the operation. Inspect and service the fire extinguisher regularly. Obey the recommendations on the instruction plate.

An optional mounting bracket can be installed on the front frame rail.

The bracket is designed to hold a 4.5 kg (10 lb)extinguisher.

Do not weld a bracket on the cab ROPS frame to install the fire extinguisher.

Do not drill holes in the cab ROPS frame to mount the fire extinguisher.

Make sure all the clamps , the guards, and the heat shields are installed correctly to prevent vibration, rubbing, and excessive heat during the machine operation.

---

### 1.1.30 Public road transportation

---

Always walk around and visually examine the machine before moving on a public road. As a warning to others in the area, honk the horn two times before starting engine. Do a check for damage and/or defective components that can make a dangerous condition. Make sure all machine systems operate correctly including (but not limited to):

- front road lamps
- tail and brake lamps
- amber hazard lights
- parking brake
- horn
- windshield wiper and washer
- rear view mirrors
- etc.

Repair or replace a component not in correct operating order.

Do not drive at a speed causing machine to lose control.

Obey all traffic rules. Operate the machine with hazard lights on, unless prevented by law. The operation of work lamps while driving on public roads is prohibited. Use of road lamps while moving on public roads is the operator's responsibility.

**NOTE:**

*When the Speed Indication Symbol (SIS) is installed in the rear window, be sure to close the rear window when transporting the machine on the road.*

## 1.2 Safety signs and labels

There are several specific safety signs on this machine. The exact location of the hazards and the description of the hazards are reviewed in this section.

Become familiarized with all of the safety signs. Make sure all of the safety signs are legible. Clean the safety signs or replace the safety signs if you cannot read the words. When cleaning the safety signs, use a cloth, water, and soap. Do not use a solvent, gasoline, or other harsh chemicals. Solvents, gasoline, or harsh chemicals can loosen the adhesive that secures the safety sign. Loose adhesive will allow the safety sign to fall off.

Replace any safety sign that is damaged or missing.

If a safety sign is attached to a part of the machine that is replaced, install a safety sign on the replacement part. Any AGCO dealer can provide new safety signs.

**NOTE:**

*Do not remove or block any safety sign or instruction sign.*

Thank you so much for reading.  
Please click the “Buy Now!”  
button below to download the  
complete manual.



After you pay.

You can download the most  
perfect and complete manual in  
the world immediately.

Our support email:

[ebooklibonline@outlook.com](mailto:ebooklibonline@outlook.com)