

Operator's Manual



Rubber Track Tractor

1149MT

TABF11xxxJxxx1001-

1154MT

1159MT

1165MT



Rubber Track Tractor

1	Safety	13
1.1	Safety Information	15
1.1.1	Operator Manual	15
1.1.2	Safety symbol	15
1.1.3	Safety messages	15
1.1.4	Information messages	15
1.1.5	Safety signs	16
1.1.6	Important safety information	16
1.1.7	General hazard information	17
1.1.8	Pressurized air	18
1.1.9	Asbestos information	18
1.1.10	Electrical storm injury prevention	18
1.1.11	Mount and dismount the machine	18
1.1.12	Before you start the engine	19
1.1.13	Start the engine	19
1.1.14	Before operation	19
1.1.15	Procedures for operation	19
1.1.16	Park the machine	20
1.1.17	Operator station	20
1.1.18	Cut and crush prevention	21
1.1.19	Rollover protective structure	21
1.1.20	Burn prevention	22
1.1.21	Coolant	22
1.1.22	Oils	22
1.1.23	High pressure lines	22
1.1.24	Fluid penetration	23
1.1.25	Batteries	23
1.1.26	Exhaust fumes	24
1.1.27	Noise prevention	25
1.1.28	Fire and explosion prevention	25
1.1.29	Fire extinguisher	26
1.1.30	Public road transportation	26
1.2	Safety signs and labels	27
1.3	Engine safety signs	28
1.3.1	Engine oil filter	29
1.3.2	Belt routing	29
1.3.3	Informational - cab air conditioning	29
1.3.4	Separator filter	29
1.3.5	Fuel filter	30
1.3.6	Hot surface	30
1.3.7	High pressure hazard	30
1.3.8	Entanglement	31
1.3.9	Entanglement	31
1.3.10	Run over hazard	31
1.3.11	Fuel filter	31
1.3.12	Separator filter	32
1.3.13	Informational - engine air cleaner	32
1.3.14	Engine oil filter	32
1.3.15	Ether	32
1.3.16	Hot pressurized coolant	33
1.3.17	Engine oil sign	33
1.3.18	No step	33

1.4	Chassis safety signs	34
1.4.1	Engine cover support	35
1.4.2	Radiation hazard	35
1.4.3	Operators manual	35
1.4.4	Torque	35
1.4.5	Ultra low sulfur diesel fuel	36
1.4.6	Fall off hazard	36
1.4.7	Pinch hazard	36
1.4.8	Tiedown	36
1.4.9	Lift	37
1.4.10	Rear rollover	37
1.4.11	Crush warning	37
1.4.12	Power take off	37
1.4.13	Transmission oil fill	38
1.4.14	Torque	38
1.4.15	Torque	38
1.4.16	No step	38
1.5	Cab safety signs	39
1.5.1	Run-over hazard	40
1.5.2	Roll-over hazard	40
1.5.3	Bystander notification	40
1.5.4	Operators manual	40
1.5.5	Park brake	41
1.5.6	Installation date	41
1.5.7	Alternate exit	41
1.6	Hydraulic safety signs	42
1.6.1	High pressure hazard	43
1.6.2	High pressure fluid	43
1.6.3	Hydraulic couplers	43
1.6.4	Hydraulic oil filter	43
1.6.5	Oil level	44
1.7	Electrical safety signs	45
1.7.1	Rear terminal mini fuse relay	46
1.7.2	Fuse / relays	46
1.7.3	Electrical hazard	46
1.7.4	Battery explosion	46
1.7.5	12 volt	47
1.7.6	Electrical ground	47
1.7.7	Wire access	47
1.7.8	Battery shut off	47
2	Introduction	49
2.1	Machine identification information	51
2.2	Serial number definition	53
2.3	Intended use	54
2.4	Proper disposal of waste	55
2.5	Pre-Delivery	56
2.5.1	Pre-delivery checklist	56
2.6	EC -Declaration of Conformity	57
3	Operation	59
3.1	General inspection	65
3.1.1	Walk-around inspection	65
3.2	Start the engine	67
3.2.1	Pre-start checks	67
3.2.2	Start the engine	67

3.2.3	Start the engine in normal conditions	67
3.2.4	Start the engine with jumper cables	68
3.3	Engine start switch	69
3.4	Monitor mounting bar	70
3.5	Lamp switches	71
3.5.1	Multifunction light switch on the steering column	71
3.5.2	Extremity lamps	72
3.5.3	Interior lamps	72
3.5.4	Courtesy lamp	72
3.5.5	Cab switches	73
3.5.6	Exterior courtesy lamps	74
3.5.7	Lighting shutdown delay	74
3.5.8	Rotating beacon	75
3.5.9	Backlighting for switches in the cab	75
3.6	Dash panel	76
3.7	Steering wheel	79
3.7.1	Horn	79
3.7.2	Steering wheel tilt lever	79
3.8	Mirrors	80
3.8.1	Inside rear view mirror	80
3.8.2	Outside rear view mirrors	80
3.9	Radio	81
3.9.1	Steering wheel controls	81
3.9.2	Blue tooth microphone	81
3.10	Windows	82
3.10.1	Window sun screen	82
3.10.2	Open the rear window	82
3.10.3	Window washer compartment	82
3.10.4	Rear window as an alternate exit	83
3.10.5	Exit the cab in an emergency	83
3.11	Storage and literature compartments	84
3.12	Operator seat	85
3.12.1	Armrest adjustment	85
3.12.2	Standard operator seat	85
3.12.3	Heated and ventilated seats	87
3.12.4	Deluxe heated - vented seat	88
3.12.5	Instructor seat	89
3.12.6	Seat belts	90
3.12.7	Operator presence functionality	90
3.13	Exterior tool box	91
3.14	Heating and air conditioning controls	92
3.14.1	Automatic temperature controls	92
3.14.2	Manual temperature control system	93
3.15	Vent locations	94
3.16	Machine management center	95
3.16.1	Terminal	95
3.16.2	Machine management center version information	96
3.16.3	Set the measurement units	96
3.16.4	Set the language	98
3.16.5	Set the decimal display	99
3.16.6	Set the time and date	99
3.16.7	Terminal settings	100
3.16.8	Applications	102
3.16.9	Select an auxiliary input	103
3.16.10	View the screens	104

3.16.11	Engine	104
3.16.12	Transmission	105
3.16.13	Hydraulic	106
3.16.14	Powertrain protection software (PPS)	107
3.16.15	Measure INST (instantaneous)	108
3.16.16	Measures - field	108
3.16.17	Measures - fuel	109
3.16.18	Memory	109
3.16.19	Power management	112
3.16.20	Tractor settings	113
3.16.21	Slip alarm	114
3.16.22	ISO 11783 Class 3	116
3.16.23	Service intervals	117
3.16.24	Headland management	121
3.16.25	Headland management icon identification	124
3.16.26	DTC (diagnostic trouble codes) stored or active	126
3.16.27	Track tension	127
3.16.28	3-point linkage	128
3.16.29	Slip calibration	130
3.16.30	Steering calibration	132
3.16.31	Inching pedal calibration	134
3.16.32	Radar calibration	135
3.16.33	Enable the video camera - software version 3.2 and before	137
3.17	Air system operation	139
3.17.1	Air system operation	139
3.17.2	Air trailer brake couplers	139
3.17.3	Air hose connection	140
3.18	Machine control	141
3.18.1	Throttle control	141
3.18.2	Decelerator - if equipped	141
3.18.3	Power management	141
3.18.4	Brake control	142
	3.18.4.1 Service brakes	142
3.18.5	Hydraulic trailer brake if equipped	143
3.18.6	Park brake	143
3.18.7	Manual parking brake handle	144
3.19	Overweight protection strategy (OWPS)	145
3.20	Inching pedal control	146
3.21	Transmission	147
3.21.1	Transmission control	147
3.21.2	Machine ground speeds	147
3.21.3	Transmission control lever	148
3.21.4	Transmission shifting diagram	148
3.21.5	Preselect a gear before you move	148
3.21.6	Use of the inching clutch control	149
3.21.7	Operate the shuttle shift	149
3.21.8	Speed match	150
3.22	Hydraulic controls	151
3.22.1	Hydraulic control valve operation	151
3.22.2	Roading lockout switch for the hydraulic control levers	153
3.23	General hydraulic connections	154
3.23.1	General hydraulic connections	154
3.23.2	Connect hoses to the quick couplers	154
3.23.3	Disconnect hoses from the quick couplers	155
3.23.4	Hydraulic flow management	155
3.23.5	Hydraulic motors	155
3.23.6	Selection of hydraulic motors	155

3.23.7	Single acting cylinders	156
3.23.8	Connect a double acting cylinder	156
3.23.9	Connect hydraulic motors to the control valves	156
3.23.10	Connect a grain cart with an auger motor	157
3.23.11	Semi - mounted vacuum planter with the lift assist wheels	158
3.23.12	Connect the vacuum planter	159
3.23.13	Connect the air seeder or the grain drill	159
3.23.14	Connect the spray system pump	161
3.23.15	Connect the auxiliary implement controls	161
3.23.16	Hydraulic power beyond	162
3.23.17	Connect a hydraulic motor to power beyond	162
3.23.18	Connect the auxiliary implement control valve with load sense	163
3.23.19	Connect the auxiliary implement control valve without load sense	163
3.23.20	Auxiliary implement control valve bank	163
3.23.21	Connect the hydraulic motor with the flow control valve	164
3.24	Electrical system	165
3.24.1	Radar unit	165
3.24.2	Radar connector	165
3.24.3	Battery disconnect switch	166
3.24.4	Single pole connectors	166
3.24.5	Auxiliary power switch	166
3.24.6	Trailer connector	167
3.24.7	Put the implement cable into the cab	167
3.24.8	ISO 11783 connector	167
3.25	3-point linkage	169
3.25.1	Console controls	169
3.25.2	3-point linkage	169
3.25.3	Adjust the 3-point linkage control lever	169
3.25.4	Draft control	170
3.25.5	Slip sensitivity	171
3.25.6	Raise/lower switch for the 3-point linkage	172
3.25.7	Use the external raise lower switch	172
3.25.8	Level the implement	173
3.25.9	Adjust the top link	173
3.25.10	Adjust the draft arm	173
3.25.11	Lift linkages and quick hitch	174
3.25.12	Adjust the lift links	175
3.25.13	Replace the rubber stops on the wide swing drawbar	176
3.25.14	Replace the wear plates and the rubber stops on the standard drawbar	176
3.26	Steerable 3-point linkage	177
3.26.1	Steerable hitch functionality	177
3.27	Capture the steerable 3-point linkage	179
3.28	3-point linkage lift assist	180
3.29	Connect the implements	181
3.29.1	Connect the implements to the 3-point linkage	181
3.29.2	Connect the implements to the quick hitch	181
3.30	Disconnect the implements	182
3.30.1	3-point hitch implements	182
3.30.2	Quick Hitch implements	182
3.31	Drawbar	183
3.31.1	Category three pin with adapter plate for category four drawbar	183
3.31.2	Category four pin with adapter plate for the category five drawbar	183
3.31.3	Drawbar	183
3.31.4	Connect drawbar implements	184
3.31.5	Wide swing drawbar	185
3.31.6	Controlled drawbar	185
3.31.7	Connect category four drawbar implements	186

3.31.8	Connect category five drawbar implements	186
3.31.9	Adjust the wide swing drawbar support	187
3.31.10	Safety chain	188
3.31.11	Implement hook up	188
3.32	Power take off (PTO)	189
3.32.1	Operate the power take-off	189
3.32.2	Power take-off shaft	190
3.32.3	Connect the power take-off implements	190
3.33	Tow and transport	191
3.33.1	Operate the machine on the road	191
3.33.2	Operate on the road with a 3-point linkage mounted implement	192
3.33.3	High speed road operation	192
3.33.4	Basic towing	192
3.33.5	Tow a stuck machine	193
3.33.6	Tow a machine with a dead engine	193
3.33.7	Accumulator without pressure	194
3.33.8	Transport the machine	195
3.34	Performance recommendations	196
3.34.1	Machine performance	196
3.35	Tracks	197
3.35.1	Track selection	197
3.35.2	Low profile tracks	197
3.35.3	General ag tracks	197
3.35.4	Extreme application tracks	197
3.36	Debris deflectors	199
3.37	Machine ballast	201
3.37.1	Levels of ballast	202
3.37.2	Add weights	203
3.37.3	Maximum machine weight	203
3.38	Weights	205
3.38.1	Combinations of idler weights	206
3.38.2	Install the front weights	208
3.38.3	Remove the 20 front weights	209
3.38.4	Remove the 32 front weights	212
3.38.5	Install the idler weight	215
3.38.6	Remove the idler weights	216
3.38.7	Install the undercarriage weights	217
3.38.8	Remove the undercarriage weights	218
3.38.9	Measure the slippage	219
3.39	Undercarriage	220
3.39.1	Undercarriage	220
3.39.2	Turn performance	221
3.40	Moldboard plough applications	223
3.40.1	Moldboard plough applications	223
3.40.2	Rollover ploughs	224
3.41	Special application machines - towed scrapers	225
3.41.1	Ballast for towed scrapers	225
3.41.2	Drawbars and hitches for a towed scraper	226
3.41.3	Hydraulic connections for a towed scraper	226
3.41.4	Connections for hydraulic power beyond - towed scrapers	227
3.41.5	Laser level controls - land leveling applications	227
3.41.6	Operation guidelines - scraper	227
3.41.7	Speed selection - scraper	228
4	Maintenance	229
4.1	Lubricant viscosities and refill capacities	231

4.1.1	Lubricant viscosities for ambient temperatures	231
4.1.1.1	Lubricant viscosities	231
4.1.1.2	Refill capacities	231
4.2	Service intervals	233
4.2.1	Maintenance chart	233
4.2.2	Maintenance schedule	234
4.3	Fuse panel	236
4.3.1	Main fuse panel	236
4.3.2	Fuse block one	237
4.3.3	Fuse block two	238
4.3.4	Fuse relay block one	239
4.3.5	Fuse relay block two	240
4.3.6	Relay and fuse panel for chassis	240
4.3.7	Main fuse	241
4.4	Engine	242
4.4.1	Replace the engine air filter	242
4.4.2	Do a check of the engine oil level	242
4.4.3	Change the engine oil and oil filter	243
4.4.3.1	Examine the used filters	245
4.4.4	Engine oil sample port	245
4.4.5	Engine belts	245
4.4.6	Engine temperature	246
4.4.7	Open the engine cover	246
4.5	Fan drive belt removal and installation	247
4.5.1	Remove the fan drive belt	247
4.5.2	Install the fan drive belt	248
4.6	Fuel system	251
4.6.1	Fuel cap	251
4.6.2	Fill the fuel system	251
4.6.3	Change the prefilter and the fuel filters	252
4.6.4	Fuel water separator	253
4.6.5	Prime the fuel system	253
4.7	Cooling system	255
4.7.1	Clean the cooling cores	255
4.7.2	Water valve shutoff	255
4.7.3	Do a check of the engine coolant level	256
4.7.4	Drain the engine coolant	256
4.7.5	Cooling system additives	257
4.7.6	Coolant sample	257
4.7.7	Replace the water temperature thermostat	258
4.8	Flush and refill the cooling system	259
4.8.1	Coolant system fluid	259
4.8.2	Flush the cooling system	259
4.8.3	Refill the cooling system	260
4.9	Hydraulics - check and change system oil	261
4.9.1	Do a check of the hydraulic system oil	261
4.9.2	Change the hydraulic system oil	262
4.10	Hydraulic filters	264
4.10.1	Replace the transmission and steering filter	264
4.10.2	Replace the implement filters	264
4.10.3	Replace the implement case drain filter	264
4.10.4	Replace the steering pump case drain filter	265
4.10.5	Remove the suction screen	266
4.10.6	Replace the transmission oil	267
4.11	Cab filtration	270
4.11.1	Primary fresh air filter	270

4.11.2	Remove the primary air filter	270
4.11.3	Filter maintenance	270
4.11.4	Clean the filter	271
4.11.5	Install the primary air filter	271
4.11.6	Remove the recirculation filter	271
4.11.7	Install the recirculation filter	272
4.12	Maintenance access	273
4.12.1	Remove the guards	273
4.12.2	Remove the engine fan guards	274
4.13	Undercarriage (Mobil trac) system	275
4.13.1	Do a check of the oil level for the drive wheel hubs	275
4.13.2	Change the drive wheel hub oil	275
4.13.3	Do a check of the oil level for the idler wheel and the mid roller wheel hubs	276
4.13.4	Change the oil on the idler and the mid roller wheel hub	276
4.13.5	Track and undercarriage inspection	276
4.13.6	Adjust the gauge spacing	277
4.13.7	Measure the gauge spacing	283
4.14	Special considerations - scraper	285
4.14.1	Belt untracking - scraper	285
4.14.2	Weight transfer limit	285
4.14.3	Towed scraper operation and inspection	286
4.14.4	Scraper setup	286
4.14.5	Retrieve a stuck machine / scraper	286
4.15	Detention the tracks	288
4.15.1	Detension the tracks	288
4.15.2	Release the pressure between the nipple and the filler valve	289
4.16	Tension the tracks	290
4.16.1	Add tension to the tracks	290
4.17	Replace the track	293
4.18	Track alignment	295
4.18.1	Track alignment	295
4.18.2	Check the alignment	295
4.18.3	Adjust the track alignment	296
4.19	Batteries	297
4.19.1	Remove the batteries	297
4.19.2	Install the batteries	298
4.20	Prepare for the cold season	300
4.20.1	Cold season	300
4.20.2	Cold start	300
5	Troubleshooting	301
5.1	Heating and air conditioning troubleshooting	303
5.1.1	Retrieve diagnostic information from the automatic temperature control unit	303
5.2	Electrical system troubleshooting	306
5.3	Brake troubleshooting	307
5.4	Engine troubleshooting	309
5.5	Hydraulic troubleshooting	314
5.6	3-point linkage troubleshooting	316
5.7	Transmission troubleshooting	318
5.8	Steering system troubleshooting	320
5.9	Guidance troubleshooting	325
5.9.1	VarioGuide ready indicator is not on	325
5.9.2	VarioGuide ready indicator is on	326
5.9.3	VarioGuide de-activates during operation	326

5.10	Machine Error Codes	328
5.10.1	Engine error codes	328
5.10.2	Transmission error codes	330
5.10.3	Armrest ECM error codes	335
5.10.4	Auxiliary valve one ECM error codes	339
5.10.5	Auxiliary valve two ECM error codes	340
5.10.6	Auxiliary valve three ECM error codes	340
5.10.7	Auxiliary valve four ECM error codes	341
5.10.8	Auxiliary valve five ECM error codes	341
5.10.9	Auxiliary valve six ECM error codes	342
5.10.10	Front lighting ECM error codes	342
5.10.11	Roof lighting ECM error codes	343
5.10.12	Rear lighting ECM error codes	343
6	Specifications	345
6.1	Engine specifications	347
6.2	Torque specifications	348
6.2.1	Constant torque hose clamps	348
6.3	Dimensions	349
6.3.1	Dimensions	350
6.4	Noise vibration level	351
6.5	Machine specifications	352
6.6	Shipping weights	355
7	Index	357

1 Safety

1.1	Safety Information	15
1.1.1	Operator Manual	15
1.1.2	Safety symbol	15
1.1.3	Safety messages	15
1.1.4	Information messages	15
1.1.5	Safety signs	16
1.1.6	Important safety information	16
1.1.7	General hazard information	17
1.1.8	Pressurized air	18
1.1.9	Asbestos information	18
1.1.10	Electrical storm injury prevention	18
1.1.11	Mount and dismount the machine	18
1.1.12	Before you start the engine	19
1.1.13	Start the engine	19
1.1.14	Before operation	19
1.1.15	Procedures for operation	19
1.1.16	Park the machine	20
1.1.17	Operator station	20
1.1.18	Cut and crush prevention	21
1.1.19	Rollover protective structure	21
1.1.20	Burn prevention	22
1.1.21	Coolant	22
1.1.22	Oils	22
1.1.23	High pressure lines	22
1.1.24	Fluid penetration	23
1.1.25	Batteries	23
1.1.26	Exhaust fumes	24
1.1.27	Noise prevention	25
1.1.28	Fire and explosion prevention	25
1.1.29	Fire extinguisher	26
1.1.30	Public road transportation	26
1.2	Safety signs and labels	27
1.3	Engine safety signs	28
1.3.1	Engine oil filter	29
1.3.2	Belt routing	29
1.3.3	Informational - cab air conditioning	29
1.3.4	Separator filter	29
1.3.5	Fuel filter	30
1.3.6	Hot surface	30
1.3.7	High pressure hazard	30
1.3.8	Entanglement	31
1.3.9	Entanglement	31
1.3.10	Run over hazard	31
1.3.11	Fuel filter	31
1.3.12	Separator filter	32
1.3.13	Informational - engine air cleaner	32
1.3.14	Engine oil filter	32
1.3.15	Ether	32
1.3.16	Hot pressurized coolant	33
1.3.17	Engine oil sign	33
1.3.18	No step	33

1.4	Chassis safety signs	34
1.4.1	Engine cover support	35
1.4.2	Radiation hazard	35
1.4.3	Operators manual	35
1.4.4	Torque	35
1.4.5	Ultra low sulfur diesel fuel	36
1.4.6	Fall off hazard	36
1.4.7	Pinch hazard	36
1.4.8	Tiedown	36
1.4.9	Lift	37
1.4.10	Rear rollover	37
1.4.11	Crush warning	37
1.4.12	Power take off	37
1.4.13	Transmission oil fill	38
1.4.14	Torque	38
1.4.15	Torque	38
1.4.16	No step	38
1.5	Cab safety signs	39
1.5.1	Run-over hazard	40
1.5.2	Roll-over hazard	40
1.5.3	Bystander notification	40
1.5.4	Operators manual	40
1.5.5	Park brake	41
1.5.6	Installation date	41
1.5.7	Alternate exit	41
1.6	Hydraulic safety signs	42
1.6.1	High pressure hazard	43
1.6.2	High pressure fluid	43
1.6.3	Hydraulic couplers	43
1.6.4	Hydraulic oil filter	43
1.6.5	Oil level	44
1.7	Electrical safety signs	45
1.7.1	Rear terminal mini fuse relay	46
1.7.2	Fuse / relays	46
1.7.3	Electrical hazard	46
1.7.4	Battery explosion	46
1.7.5	12 volt	47
1.7.6	Electrical ground	47
1.7.7	Wire access	47
1.7.8	Battery shut off	47

1.1 Safety Information

1.1.1 Operator Manual

This operator manual uses the latest information available at the time of publication. Read the operator manual carefully before operating the machine.

Right-hand and left-hand, as used in the operator manual, is determined by facing the direction that the machine travels when in use.

Photos, illustrations, and data used in the operator manual were current at the time of publishing. Because of possible production changes, each machine can vary. Manufacturer reserves the right to redesign and change the machine as necessary without notification.

1.1.2 Safety symbol

The safety symbol tells you about a potentially hazardous area!

Look for the safety symbol in this manual and on the machine. The safety symbols tell you that there is important safety instructions in the manual.



Fig. 1

1.1.3 Safety messages

The words DANGER, WARNING or CAUTION are used with the safety symbol. Learn these safety messages and obey the recommended precautions and safety instructions.



DANGER:
If you do not obey the recommended precautions and safety instructions, **DEATH OR INJURY will occur.**



WARNING:
If you do not obey the recommended precautions and safety instructions, **DEATH OR INJURY can occur.**



CAUTION:
If you do not obey the recommended precautions and safety instructions, **INJURY can possibly occur.**



Fig. 2

1.1.4 Information messages

The words important and note are not related to personal safety, and are used to give information about the operation and servicing of the machine.

IMPORTANT: Identifies special instructions or procedures which, if not followed, can cause damage to the machine, the process, or the area around the machine.

NOTE: *Information to make procedures easier.*

1.1.5 Safety signs



WARNING:

Do not remove the safety signs. Replace safety signs that you cannot read, are damaged, or are missing.

Clean the machine surface with a weak soap and water solution before you replace the safety signs. Replacement safety signs are available from your dealer.

Always make sure that safety signs are in the correct locations and that you can read the safety signs. Illustrations of safety sign locations are in this section.

Keep the safety signs clean. If necessary, use a weak soap and water solution.

1.1.6 Important safety information

IMPORTANT: *Any Modifications to the machine or systems not authorized by AGCO will void the AGCO Warranty. This includes, but is not limited to hitches.*



WARNING:

When replacement parts are required for this product, AGCO recommends using AGCO replacement parts or parts with equivalent specifications including, but not limited to, physical dimensions, type, strength and material. Failure to heed this warning can get untimely failures, product damage, personal injury or death.

Failure to obey basic safety rules and precautions can cause personal injuries during product operation, maintenance, or repair. Know dangerous situations before an injury occurs.

A person must be alert to possible dangers. This person must also have the necessary training, skills and tools to do these operations correctly.

Incorrect operation, lubrication, maintenance or repair of this product can be dangerous and can result in injury or death.

Read and understand all the information about the operation, lubrication, maintenance, and repair before operating on this machine.

The product and this manual give safety precautions and warnings. Bodily injury or death can occur to you or to other persons if all warnings are not heeded.

Not every possible circumstance that can involve a potential danger can be anticipated. The warnings in this publication and on the product are, thus, not all inclusive. If a tool or procedure, not recommended by AGCO, is used, make sure they are safe for everyone.

An operator must make sure the product will not be dangerous or damaged by the operation, lubrication, maintenance or repair procedures selected. Information, specifications, and illustrations in this publication come from information available at the time of publication production.

Specifications, torques, pressures, measurements, adjustments, illustrations, and other items can change at any time. These changes can change the service that is given to the product. Get the complete and most current information before starting a job. AGCO dealers have the most current information available.

1.1.7 General hazard information



CAUTION:
Carefully read the operator's manual before operating the machine. See all instructions and safety rules when operating or doing maintenance.



Fig. 3

Do not start the engine until the area is free of personnel. Honk the horn two times to alert others. This will help in avoiding personal injury because machine movement can occur.

Know the width of the equipment to keep correct clearance when operating the machine near fences or near boundary obstacles.

Wear a hard hat, protective glasses, and other protective equipment, as required.

Do not wear loose clothing or jewelry that can catch on controls or on other parts of the machine.

Make sure that all protective guards and all covers are attached in position on the machine.



Fig. 4

Keep the machine free from unwanted material. Remove debris, oil, tools, and other items from the deck, from walkways, and from steps.

Secure lunch boxes, tools, and other loose items that are not a part of the machine.

Know the appropriate work location hand signals and the personnel that are authorized to give the hand signals. Get hand signals from one person only.

Never put maintenance fluids into glass containers. Drain all liquids into an approved container.

Discard any drained fluids and discard any filter elements according to local regulations.

Use all cleaning solutions with precaution.

Report all necessary repairs.

Do not let untrained or not approved personnel on the machine.

Do not smoke when servicing an air conditioner. Also, do not smoke if refrigerant gas can be present. Inhaling the fumes that are released from a flame that contacts air conditioner refrigerant can cause bodily harm or death.

Inhaling gas from air conditioner refrigerant through a lighted cigarette can cause bodily harm or death.

Unless being instructed differently, complete the maintenance under the following conditions:

- Turn the battery disconnect switch to "off" position.
- The machine is parked on level ground.
- Implements are lowered to the ground.

1. Safety

- Transmission control lever is in the park position.
- The engine is stopped.
- The engine start switch is turned off and the switch key is removed.
- The machine has cooled down.

Any additional precautions must be observed based on the conditions and environment where the machine is being used.

1.1.8 Pressurized air

Air under pressure can cause personal injury. When pressurized air is used for cleaning, wear a protective face shield, protective clothing and protective shoes.

The maximum air pressure for cleaning purposes must be below 205 kPa (30 psi).

1.1.9 Asbestos information

AGCO equipment and replacement parts are asbestos free. AGCO recommends the use of only correct AGCO replacement parts.

1.1.10 Electrical storm injury prevention

When lightning is striking in the vicinity of the machine, the operator should not attempt to dismount or mount the machine.

If you are in the operator's station during an electrical storm, stay in the operator's station. If you are on the ground during an electrical storm, stay away from the machine.

1.1.11 Mount and dismount the machine

Mount the machine and dismount the machine only at locations that have steps and/or hand holds. Before mounting the machine, clean the steps and the hand holds. Inspect the stairs and hand holds. Make any necessary repairs.

When dismounting the machine, descend the steps backwards, and maintain a three-point contact with the steps and hand holds. Three-point contact is two feet and one hand or one foot and two hands.

Never mount a moving machine. Never dismount a moving machine. Never jump off the machine except in an emergency.

Do not carry tools or supplies when you try to mount the machine or when you try to dismount the machine. Use a hand line to pull equipment onto the platform.

Do not use any controls as hand holds when you enter the operator compartment or when you exit the operator compartment.

1.1.12 Before you start the engine

Start the engine only from the operator compartment. Never short across the starter terminals or batteries. Shorting can damage electrical system or cause unexpected machine movement.

Adjust the seat so full pedal travel can be achieved with operator's back against seat back.

Make sure the machine is equipped with a lighting system sufficient for job conditions. Make sure all machine lights are working properly.

Before starting the engine or moving the machine, make sure no one is under, around or on machine. Make sure area is free of personnel.

To honk horn the key must be turned to "run" to enable the horn. As a warning honk horn twice, to alert others.



Fig. 5

1.1.13 Start the engine

Move all hydraulic controls to the hold position before starting the engine.

Make sure the transmission control lever is in the park position.

Diesel engine exhaust contains products of combustion which can be dangerous. Always operate the engine in a well ventilated area. If in a closed in area, vent the exhaust to the outside.



WARNING:

Machine will turn if turning the steering wheel when the transmission control lever is in neutral and the engine is idling.



WARNING:

Do not use ether at any time. Use will cause engine damage and/or personal injury.

Do not start the engine until the area is free of personnel to prevent personal injury because of unexpected machine movement.

1.1.14 Before operation

Clear all personnel from around the machine and the area.

Clear all obstacles from machine's path. Be careful of dangers, (electrical power lines, ditches, etc).

Make sure all the windows are clean and attached in the closed position.

Adjust the rearview mirrors for best visibility near the machine. Make sure the horn, backup alarm (if equipped) and all other warning devices are working correctly.

On the drawbar-towed implements, fasten a transport chain of sufficient capacity between the machine drawbar support and implement. Give only enough slack in the chain to permit turning.

Only one instructor must be permitted to ride in the machine cab. Instructor must be seated in the instructor seat with the seat belt fastened.

1.1.15 Procedures for operation

The machine will turn with the transmission control lever in the neutral position when the engine is operating and the steering wheel is turned.

1. Safety

Only operate the machine while in the operator's seat. Securely fasten the seat belt while operating the machine. Only operate the controls while the engine is operating.

Check for the correct operation of all the controls and the protective devices.

As a warning honk the horn twice to alert others in the area to prevent personal injury because of machine movement.

During operation of the machine, report any damage recorded. Make any necessary repairs.

A rollover of machine can occur when working on hills, banks, or slopes. A rollover of machine can also occur when crossing ditches, ridges, or other unanticipated obstacles.

Hold the attachments approximately 40 cm (16 in) above the ground level while driving the machine. Do not drive the machine near an overhang, near the edge of a cliff, or near edge of an excavation.

If the machine begins to sideslip on a grade, immediately reduce load and turn machine downhill.

Be careful to avoid any ground condition which will cause machine to tip over.

Keep the machine under control. Do not overload the machine beyond capacity.

Make sure the towing devices are sufficient for the application.

Make sure the components on the 3-point linkage are sufficient for the application.

Connect the trailing equipment only to a drawbar or hitch.

Never straddle a wire cable.

When maneuvering to connect equipment, make sure no personnel are between machine and trailing equipment. Block up hitch of trailing equipment to align equipment with drawbar.

Know the maximum dimensions of the machine.

When operating on icy or muddy roads, reduce the travel speed to prevent losing control of machine.

Reduce travel speed if the stability of the machine is noticeably reduced.

Select a gear that controls machine speed when declining a hill.

Use the service brakes if required, to control machine speed. Never coast down a hill with transmission in neutral.

Do not let passengers anywhere on the machine except on an approved passenger seat. Instructors must have the instructor seatbelt securely fastened during any operation.

1.1.16 Park the machine

1. Park the machine on a solid, level surface.
2. Move the transmission control lever to the park position.
3. Lower all the implements to the ground.
4. Before stopping the engine, move the throttle control lever to the low idle position. Operate the engine at low idle speed for five minutes to let the turbocharger cool.
5. Stop the engine and take the key with you.
6. Chock the front idler wheels or rear drive wheels.
7. Turn the battery disconnect switch to the off position.
8. Remove the battery disconnect switch key.

1.1.17 Operator station

Do not drill holes or weld on the cab rollover protective structure. (ROPS)

Any modifications to the inner operator station must not extend into the operator space.

Any item brought into the cab must not extend into defined operator space. Secure loose items. Objects must not pose an impact hazard in rough terrain or if there is a rollover.

1.1.18 Cut and crush prevention

Support the equipment correctly when performing work below the equipment. Do not rely on the hydraulic cylinders to hold up the equipment. An implement can fall if a control lever is moved or if a hydraulic line breaks.

Never start the machine engine by shorting across the starter solenoid terminals. Machine movement can occur causing runovers .

Never make adjustments while the machine is moving or while the engine is operating.

Whenever there are attachment control linkages, the clearance in the linkage area will change with movement of the attachment.

Stay clear of all rotating parts and all moving parts.

Keep objects away from moving fan blades. The fan blades will throw objects and the fan blades can cut.

Do not use a wire tow cable that is kinked or frayed. Wear gloves when touching wire cable.

When hitting a retainer pin, the retainer pin can fly out causing personal injury. Make sure that there are no people in the area when hitting a retainer pin. To prevent eye injury, wear protective glasses when hitting a retainer pin.

Chips or other debris can fly off objects when hitting the objects. Make sure that others are clear of the area before hitting any object.

1.1.19 Rollover protective structure

Do not make any modifications to the rollover protective structure (ROPS) as this will change protection provided. Do not change structure by welding, cutting, adding weight, or drilling holes into structure.

Any change not specifically authorized by AGCO invalidates AGCO certification for ROPS. The protection offered by ROPS will be impaired if ROPS has structural damage or alteration. Damage to structure can be caused by a turn over or by falling objects.

Do not mount items (fire extinguishers, first aid kits, work lights, etc.) by welding brackets or drilling holes in ROPS. See dealer for mounting guide lines.

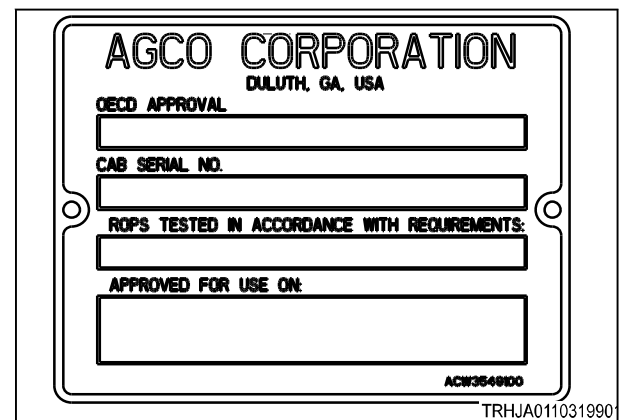


Fig. 6

TRHJA011031990

1.1.20 Burn prevention

Do not touch any part of an operating engine. Other components such as the transmission, the axles and the oil reservoir can also be hot. Let the engine cool before performing any maintenance on the engine. Release all pressure in air, oil, lubrication, fuel and cooling systems before disconnecting any line fittings or related items.



Fig. 7

1.1.21 Coolant

When the engine is at operating temperature, the engine coolant is hot. The coolant is also under pressure. The radiator and all the lines to the heater or engine contain hot coolant.

Any contact with hot coolant or with the steam can cause severe burns. Allow the cooling system components to cool before the cooling system is drained.

Check the coolant level only after the engine has been stopped.

Make sure the filler cap is cool before removing. The filler cap must be cool enough to touch with a bare hand. Remove the filler cap slowly to relieve the pressure.

The cooling system conditioner contains alkali. Alkali can cause personal injury.

Do not allow alkali to contact skin, eyes or mouth.



Fig. 8

1.1.22 Oils

Pressurized hot oil and hot components can cause personal injury. Do not allow hot oil to contact skin. Do not allow hot components to contact skin.

Remove the hydraulic tank filler cap only after the engine has been stopped.

The filler cap must be cool enough to touch with a bare hand. Follow the standard procedure in this manual to remove the hydraulic tank and transmission filler caps.

1.1.23 High pressure lines

Do not bend or strike the high pressure lines. Do not install any lines that are bent or damaged.

Repair any loose or damaged lines. Leaks can cause fires. Consult your dealer for repair or for replacement parts.

**DANGER:**

Diesel fuel or hydraulic fluid under pressure can penetrate the skin or eyes. This can cause serious personal injury, blindness, or death.

1.1.24 Fluid penetration

Always use a board or cardboard when checking for a leak. Leaking fluid under pressure can penetrate the body tissue. Fluid penetration can cause serious injury and possible death. A pin hole leak can cause severe injury. If fluid is injected into the skin, get treatment immediately. Get treatment from a doctor familiar with this type of injury.

Check the lines, the tubes and the hoses carefully. Do not use your bare hand instead, use a board or cardboard to check for leaks. Tighten all connections to the recommended torque.

Replace the hose if any of the following conditions are present:

- End fittings are damaged or leaking.
- Outer coverings are rubbed or cut.
- Wires are showing.
- Outer coverings are ballooning.
- The flexible part of the hose has a kink.
- Outer coverings have embedded armoring.
- The end fittings are displaced.

IMPORTANT: *Take care to contain fluids during the performance of the inspection, the maintenance, the testing, the adjusting, and the repair of the machine. Have a suitable container large enough ready to collect the fluid before opening any compartment or disassembling any component containing fluids. See the local regulations and mandates when discarding fluids.*

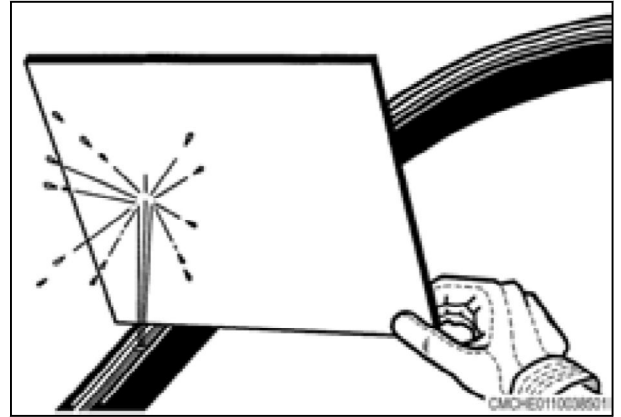


Fig. 9

1.1.25 Batteries

A lead acid battery generates flammable and explosive gases. Keep sparks and flames away from the battery.



WARNING: Sulfuric acid in battery electrolyte is poisonous.

The acid is strong enough to burn skin, eat holes in clothing and cause blindness if got into eyes.

If acid contacts skin or clothing, flush with water immediately. If acid contacts eyes get immediate medical aid.

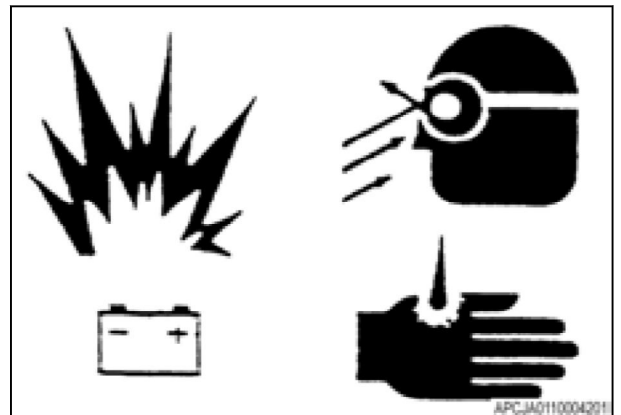


Fig. 10

1. Safety

Wash hands after touching batteries and connectors.



WARNING: Batteries contain electrolyte which is an acid that can cause personal injury.

Do not let the electrolyte contact the skin or eyes.

Always wear protective glasses for servicing batteries.



Fig. 11

Never check battery charge by placing a metal object across the terminal posts. Use a voltmeter or a hydrometer.



WARNING: Gases from a battery can explode.

Incorrect jumper cable connections can cause an explosion causing an injury.

Keep open flames or sparks away from the top of the battery. Do not smoke in the battery charging areas. To prevent an explosion, never charge a frozen battery.



Fig. 12

1.1.26 Exhaust fumes

Always work in a correct ventilated area.

Engine exhaust fumes can cause sickness or death. If necessary to run engine in a closed area, use correct equipment to safely remove exhaust fumes from area.

Always open the doors and get outside air into area.

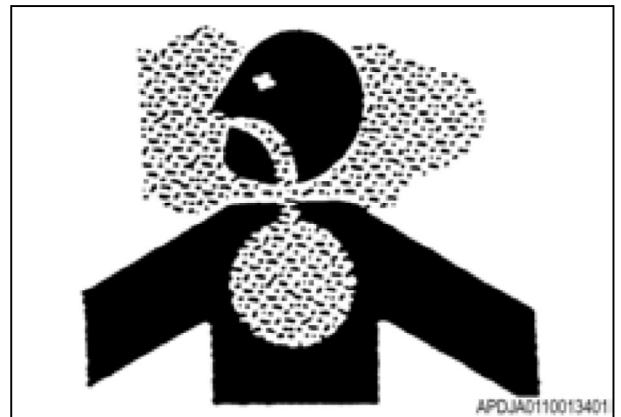


Fig. 13

Thank you so much for reading.
Please click the “Buy Now!”
button below to download the
complete manual.



After you pay.

You can download the most
perfect and complete manual in
the world immediately.

Our support email:

ebooklibonline@outlook.com