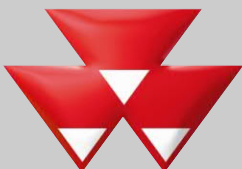


# **MF 3600**

# **Series Tractors**

**Operator's Manual**



**MASSEY FERGUSON**

	<b>INTRODUCTION</b>	<b>1</b>
	<b>IDENTIFICATION</b>	<b>2</b>
<b>INTRODUCTION, SAFETY INSTRUCTIONS AND WARRANTY</b>		<b>3</b>
	<b>CONTROLS AND INSTRUMENTS</b>	<b>4</b>
	<b>OPERATING INSTRUCTIONS</b>	<b>5</b>
	<b>MAINTENANCE</b>	<b>6</b>
	<b>GENERAL MAINTENANCE TABLE</b>	<b>7</b>
	<b>SPECIFICATIONS</b>	<b>8</b>
	<b>LUBRICANT TABLE</b>	<b>9</b>

# INTRODUCTION

## TO OUR CUSTOMER:

The following pages and illustrations are printed to help supply you with the knowledge required for operation and service of your new tractor.

Any item of equipment needs, and must have a certain amount of service and maintenance to keep it in top running condition. We have attempted to cover the various adjustments required to fit most conditions; however, there may be times when additional special care must be taken to fit a given condition.

Study this operator's manual carefully and acquaint yourself with the various adjustments and operating procedures before attempting to operate your new equipment. Remember, it is a machine and has been designed and tested to do an efficient job in most operating conditions and performance will be maximized in relation to the service it receives.

If special attention is required for some operating conditions, ask your Dealer; his Parts and Service Organization will be glad to help and answer any questions on operation and service of your new machine.



**ATTENTION! BECOME ALERT**



**YOUR SAFETY IS INVOLVED!**

This symbol is used to draw attention to safety precautions that should be followed by the operator to avoid accidents. When you see this symbol - heed its warning.

## **THIS MANUAL MUST REMAIN WITH THE TRACTOR WHEN SOLD**

This manual was prepared from the latest product information available at publication time. The Company reserves the right to make changes at any time without prior notice or obligation.

## **WARRANTY INFORMATION**

Your warranty for this tractor appears on your copy of the Retail Purchase Order and Warranty Terms and Conditions Statement which you received from your Dealer when you purchased the Tractor.

As indicated on the Retail Purchase Order signed by you and your Dealer, you, the equipment purchaser, shall assume charges for service calls or transportation of equipment to and from the location of the servicing dealer.

## **Service Parts**

The use of non-approved parts may result in a part of substandard quality. The company will not accept the responsibility for any loss, damage or liability resulting from the use of such parts. Using non-approved parts may result in the manufacturer's warranty being invalidated.

## **If You Move**

The Customer is responsible for machine inspection and for replacement or repair of worn or damaged parts when continued use could cause damage or wear to other parts.

It is also the responsibility of the Customer to deliver the machine to an authorised Dealer for service or replacement of parts covered by the warranty. When requesting warranty service from a Dealer other than the selling Dealer, the Customer must present a copy of the Delivery Record for the unit.

If the Dealer is requested by the Customer to travel to another location, or to haul the unit to the Dealer's shop for the purpose of performing warranty service or inspection, it is for the Customer's convenience and cost of such travel is to be paid by the Customer.

## **Service After Warranty**

During the warranty period, you should have all your repairs and maintenance performed by your authorised Dealer. This ensures that a detailed check is kept on the progress and performance of your new tractor.

In order to obtain the best results from your Massey Ferguson tractor, it is important that regular maintenance and service checks continue after the warranty period has expired. Make use of your local dealer for all major tractor services; a trained mechanic should spot any problems between one service and the next.

The mechanics are regularly trained and updated on the product, servicing techniques and the use of modern service tools and diagnostic equipment. Dealers receive regular Service Bulletins, have Workshop Manuals and other such technical information to ensure that the repair or service is to the standard required by the company.

## IDENTIFICATION

### MACHINE IDENTIFICATION

Each tractor is identified by means of tractor model and serial numbers. As a further identification, engine and chassis are provided with identification numbers.

To ensure prompt, efficient service when ordering parts or requesting repairs from authorised dealer, record these numbers in the spaces provided.

Machine Model and Serial Number plate (located on the rear side of the vehicle adjacent to the linkage):

\_\_\_\_\_

Machine Serial Number (also located on right-hand side of front axle support):

\_\_\_\_\_

Engine Serial Number (located on the R.H. side of engine block):

\_\_\_\_\_

Date of Delivery:

\_\_\_\_\_

Dealer Name and Address:

\_\_\_\_\_

\_\_\_\_\_

\_\_\_\_\_

Dealer Telephone Number:

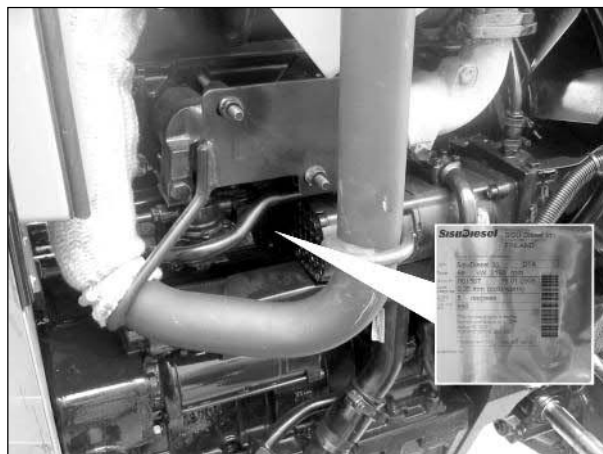
\_\_\_\_\_

Dealer Fax Number:

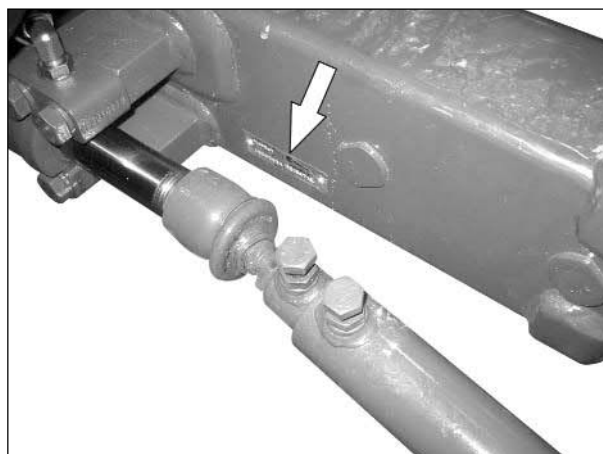
\_\_\_\_\_

Dealer E-mail Address:

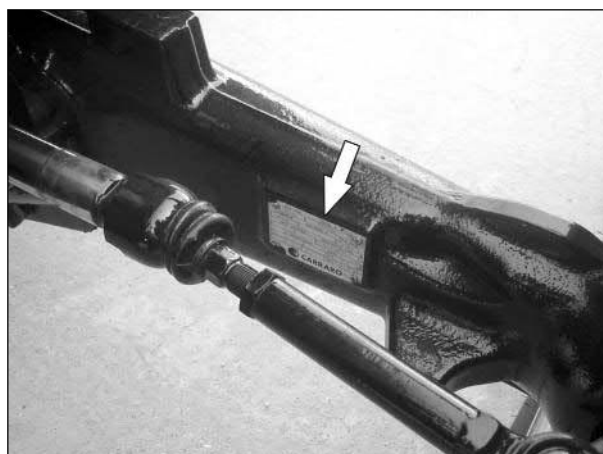
\_\_\_\_\_



**Engine**



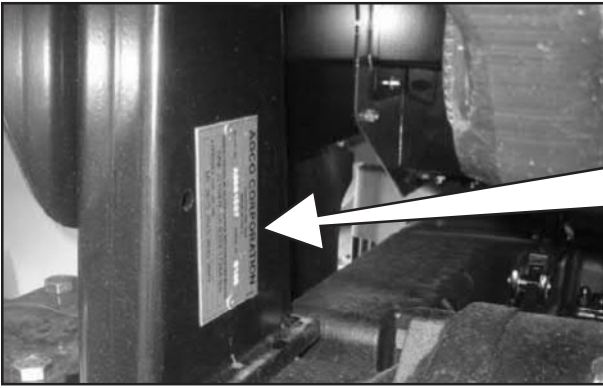
**2WD front axle serial number**



**4WD front axle serial number**

2

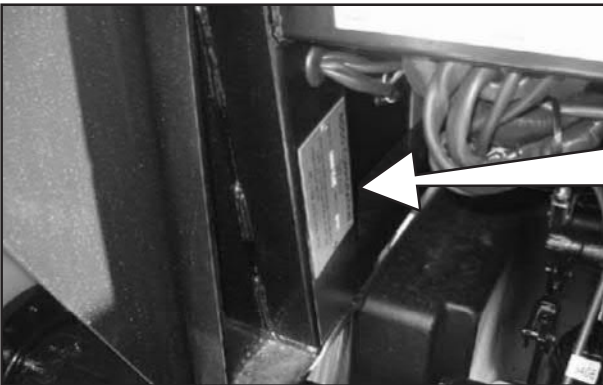
1.2



STRUTTURA DI PROTEZIONE TIPO (TYPE OF SAFETY-FRAME)	<b>AG</b>	<b>S</b> <b>e13</b>
COSTRUTTORE (MANUFACTURER)	<b>CARRARO Sp.A.</b>	
NUMERO DI SERIE (SERIAL NUMBER)		
TRATTRICE MARCA (TRACTOR TYPE)	<b>AGCO</b>	
VERSIONI (VERSION)		
NUMERO (NUMBER)	<b>Q. E. C. D. C. S. S.</b>	

CAB

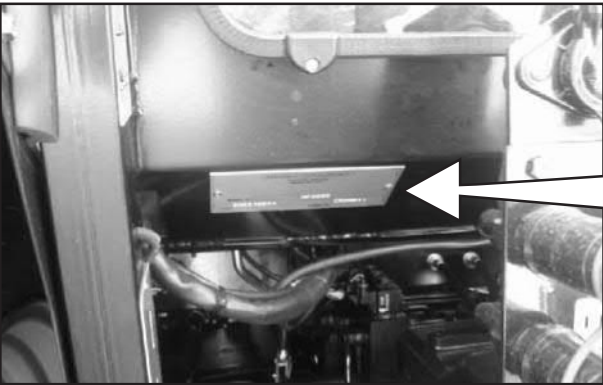
2.2



STRUTTURA DI PROTEZIONE TIPO (TYPE OF SAFETY-FRAME)	<b>AG</b>	<b>S</b> <b>e13</b>
COSTRUTTORE (MANUFACTURER)	<b>CARRARO Sp.A.</b>	
NUMERO DI SERIE (SERIAL NUMBER)		
TRATTRICE MARCA (TRACTOR TYPE)	<b>AGCO</b>	
VERSIONI (VERSION)		
NUMERO (NUMBER)	<b>Q. E. C. D. C. S. S.</b>	

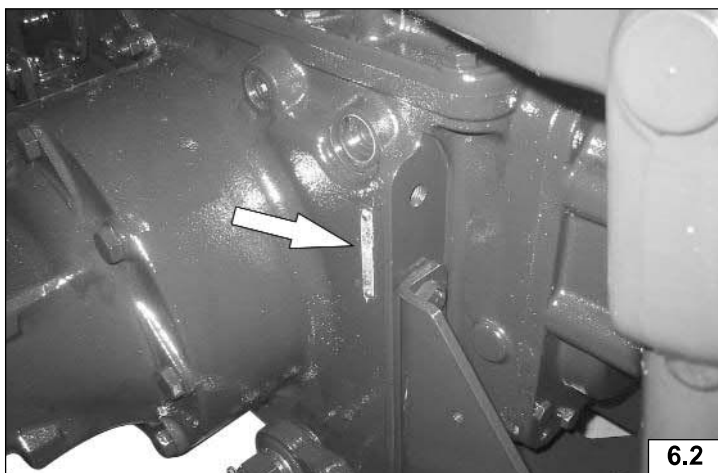
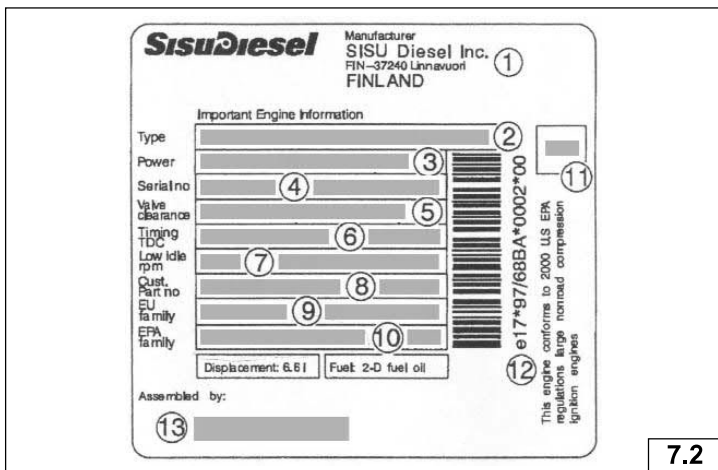
OOS

3.2



<b>AGCO S.A Beauvais FRANCE</b>		<b>CE</b>
Type:	Masse remorquable admissible:	
Numero CEE:	Masse remorquable non freinée:	kg
Numero d'identification:	Masse remorquable à freinage indépendant freiné mécaniquement:	kg
Masse totale admissible (t):	Masse remorquable freinée par inertie:	kg
Charge admissible sur l'essieu avant (t):	Masse remorquable à freinage assisté à hydraulique ou pneumatique:	kg
Charge admissible sur l'essieu arrière (t):		kg
	(t) En fonction des pneumatiques.	

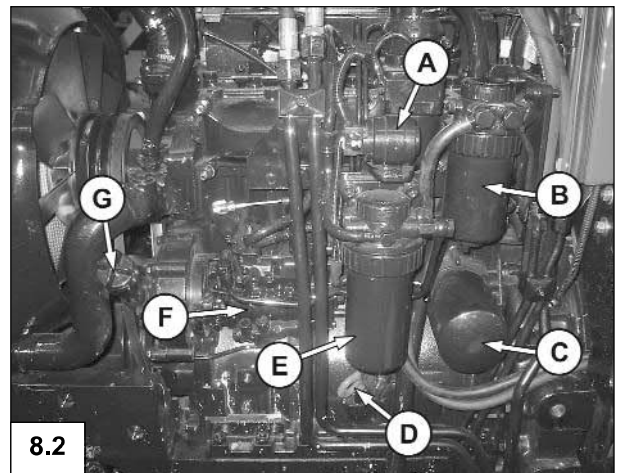
**TRACTOR SERIAL NUMBER**

**5.2**
**TRANSMISSION SERIAL NUMBER**

**6.2**
**ENGINE SERIAL NUMBER - ALL VERSIONS -**

**7.2**

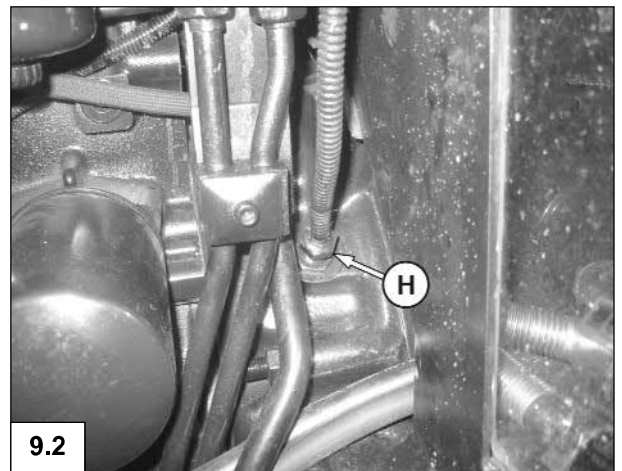
1. ENGINE MANUFACTURER
2. ENGINE TYPE
3. ENGINE POWER AND RATED SPEED
4. SERIAL NO. AND DATE OF PRODUCTION
5. VALVE CLEARANCE
6. INJECTION TIMING (STATIC)
7. IDLING SPEED
8. CUSTOMER PART NO.
9. 97/68/EC APPROVAL ENGINE FAMILY CODE
10. EPA 40 CFR 89 APPROVAL ENGINE FAMILY CODE
11. SMOKE VALUE OF APPROVAL
12. 97/68/EC APPROVAL NO.
13. NAME OF ENGINE ASSEMBLER

**ENGINE MAJOR COMPONENTS**

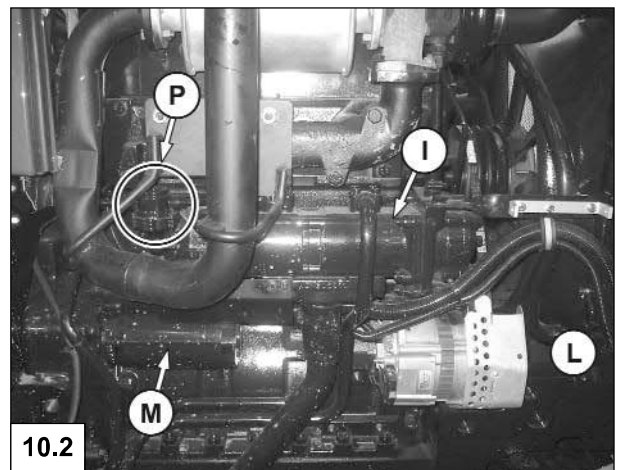
- A. Pre heater relay
- B. Fuel pre-filter
- C. Oil filter
- D. Oil dipstick
- E. Primary fuel filter
- F. Injection pump
- G. Oil cap



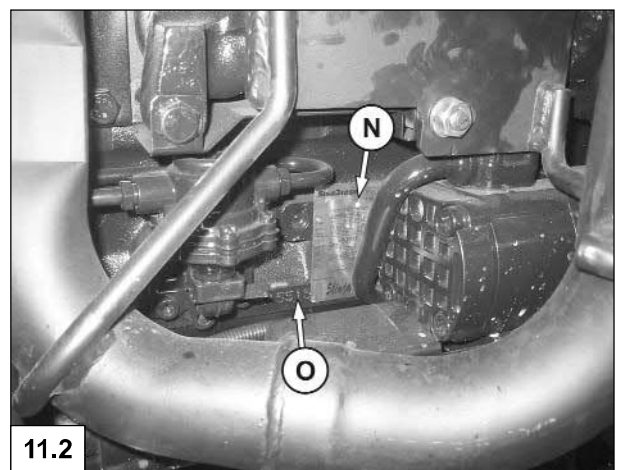
- H. Engine rpm sensor



- I. Hydraulic pump
- L. Alternator
- M. Starter motor
- P. Fuel lift pump



- N. Engine identification plate
- O. Engine serial number







## **INTRODUCTION, SAFETY INSTRUCTIONS AND WARRANTY**

- 3.1 INTRODUCTION**
- 3.2 PRE-DELIVERY, INSTALLATION ON THE FARM AND WARRANTY**
- 3.3 SAFETY**
- 3.4 EU DECLARATION OF CONFORMITY**
- 3.5 TRACTOR AND MACHINE NOISE**
- 3.6 INTRODUCTION TO SAFETY**
- 3.7 A WORD TO THE OPERATOR**
- 3.8 FOLLOW A SAFETY PROGRAMME**
- 3.9 PROTECTIVE STRUCTURES**
- 3.10 PREPARE FOR SAFE OPERATION**
- 3.11 SERVICING THE TRACTOR**
- 3.12 STARTING**
- 3.13 WORK SAFELY**
- 3.14 AFTER OPERATION**

### 3.1 INTRODUCTION

---

***NOTE: This book is published for worldwide distribution, and the availability of equipment shown either as basic or accessory may vary according to the territory in which the tractor is to be operated. Full details of equipment available in your area can be obtained from your Massey Ferguson Dealer.***

Use only Massey Ferguson approved attachments and equipment.

The purpose of this book is to enable the owner and driver to operate the tractor in a safe manner. Providing that the instructions are followed carefully, the tractor will give years of service in the tradition of Massey Ferguson.

The installation of the product on the farm by the Dealer gives the opportunity to ensure that these operating and maintenance instructions are understood. Always consult your Dealer if you do not understand any part of this book. It is important that these instructions are understood and observed. Daily maintenance should become a routine, and a record of hours in service should be kept.

When new parts are required it is important that only genuine Massey Ferguson service parts are used. Massey Ferguson Dealers supply genuine parts and can give advice regarding their fitment and use. Extensive damage may occur as a result of the fitment of parts of inferior quality. Customers are advised to buy their service parts only from an authorized Massey Ferguson Dealer.

Owing to wide variations in operating conditions, it is impossible for the Company to make comprehensive or definitive statements in its publications regarding performance or methods of use of its machines, or to accept liability for any loss or damage which may result from these statements, or from any errors or omissions. If the tractor is to be used for abnormal conditions which may be detrimental, (e.g. deep water or paddy fields) consult your Massey Ferguson Dealer for special instructions, or the warranty may be invalidated.

These tractors are designed solely for use in customary agricultural operations (intended use).

Use in any other way is considered as contrary to the intended use. Massey Ferguson accepts no liability for any damage or injury resulting from misuse and these risks must be borne solely by the user.

Compliance with, and strict adherence to, the conditions of operation, service and repair as specified by Massey Ferguson also constitute essential elements for the intended use.

These tractors should be operated, serviced and repaired only by persons familiar with all their particular characteristics and who are acquainted with the relevant safety rules (accident prevention).

Customers are strongly advised to use an official Massey Ferguson Dealer in connection with any service problems and adjustments that may occur.

## 3.2 PRE-DELIVERY, INSTALLATION ON THE FARM AND WARRANTY

The Company, when selling new goods to their Dealers, gives a warranty which, subject to certain conditions, guarantees that the goods are free from defects in material and workmanship. Since this book is published for worldwide circulation, it is impossible to detail the exact terms and conditions of warranty that apply to a retail customer in any particular country. Purchasers of new Massey Ferguson equipment should request full details from their supplying Dealer.

In accordance with the Company's policy of continuous improvement to its machines, alterations in the specifications of machines may be made at any time without notice. The Company accepts no responsibility for discrepancies which may occur between the specifications of its machines and the descriptions thereof contained in its publications.

### Pre-delivery and Installation on the Farm

A Dealer is required to carry out certain activities when supplying a new Massey Ferguson tractor. These consist of a full pre-delivery inspection to ensure that the tractor supplied is ready for immediate use, and to give full instruction in the basic principles of operation and maintenance of the tractor. These instructions will cover instruments and controls, routine maintenance and safety precautions. All persons who will be concerned with the operation and maintenance of the machine should be present during this instruction period.

**NOTE: Massey Ferguson will not accept responsibility for any claim resulting from the fitment of non-approved parts or attachments, or unauthorized modification or alteration.**

### Warranty Procedure

Correct installation on the farm, coupled with regular maintenance, will do much to prevent breakdowns. If, however, operating trouble is experienced during the warranty period, the following procedure must be adopted:

- Immediately notify the Dealer from whom you purchased the tractor, quoting the Model and Serial Number. It is most important that there should be no delay, and you should realise that, even where the original failure is covered by warranty, if the failure is not repaired immediately, warranty cover may not apply.
- Provide your Dealer with as much background information as you can. It will help him to know how many hours service has been achieved, the type of work on which you are engaged and the symptoms of the trouble.

It should be noted that normal maintenance services such as tuning, brake/clutch adjustments, and the supply of materials used to service the tractor (oil, filters, fuel and antifreeze) are not covered by the terms of warranty.

## Parts Warning

The fitment of non Massey Ferguson parts may result in a part of substandard quality being used. Massey Ferguson will not take the responsibility for any loss, damage or liability resulting from the fitment of such parts, and, if fitted during the normal warranty period the manufacturer's guarantee may be invalidated.

### Moving to a new Location

Only the Massey Ferguson Dealer from whom you purchased the tractor is responsible for the protection afforded by your warranty and, where possible, you should always take your tractor to him for repair. If, however, you move to another area or if your tractor should be working temporarily at some distance from the Dealer from whom it was purchased, you are recommended to obtain from that Dealer the name and address of the Massey Ferguson Dealer nearest to your new location and to ask for arrangements to be made for outstanding service warranty commitments to be transferred to the latter. If you have left the area in which the original Dealer operates and have not made arrangements with a new Dealer, the latter will readily provide assistance in an emergency but you will be charged at normal rates for any work undertaken unless:

- you make it clear that the warranty has not expired and,
- you give the repairing Dealer the opportunity to make suitable arrangements with the retailing Dealer.

### Service After Warranty

During the warranty period, you should have all your repairs and maintenance performed by your Massey Ferguson Dealer. This ensures that a detailed check is kept on the progress and performance of your new tractor. In order to obtain the best results from your Massey Ferguson tractor, it is important that regular maintenance and service checks continue after the warranty period has expired. Make use of your local Massey Ferguson Dealer for all major tractor services; a trained mechanic will spot any problems between one service and the next.

The mechanics are regularly trained and updated on the product, servicing techniques and the use of modern service tools and diagnostic equipment. They receive regular Service Bulletins, have all Workshop Manuals and other such technical information to ensure that the repair or service is to the standard required by Massey Ferguson.

Thank you so much for reading.  
Please click the “Buy Now!”  
button below to download the  
complete manual.



After you pay.

You can download the most  
perfect and complete manual in  
the world immediately.

Our support email:

[ebooklibonline@outlook.com](mailto:ebooklibonline@outlook.com)