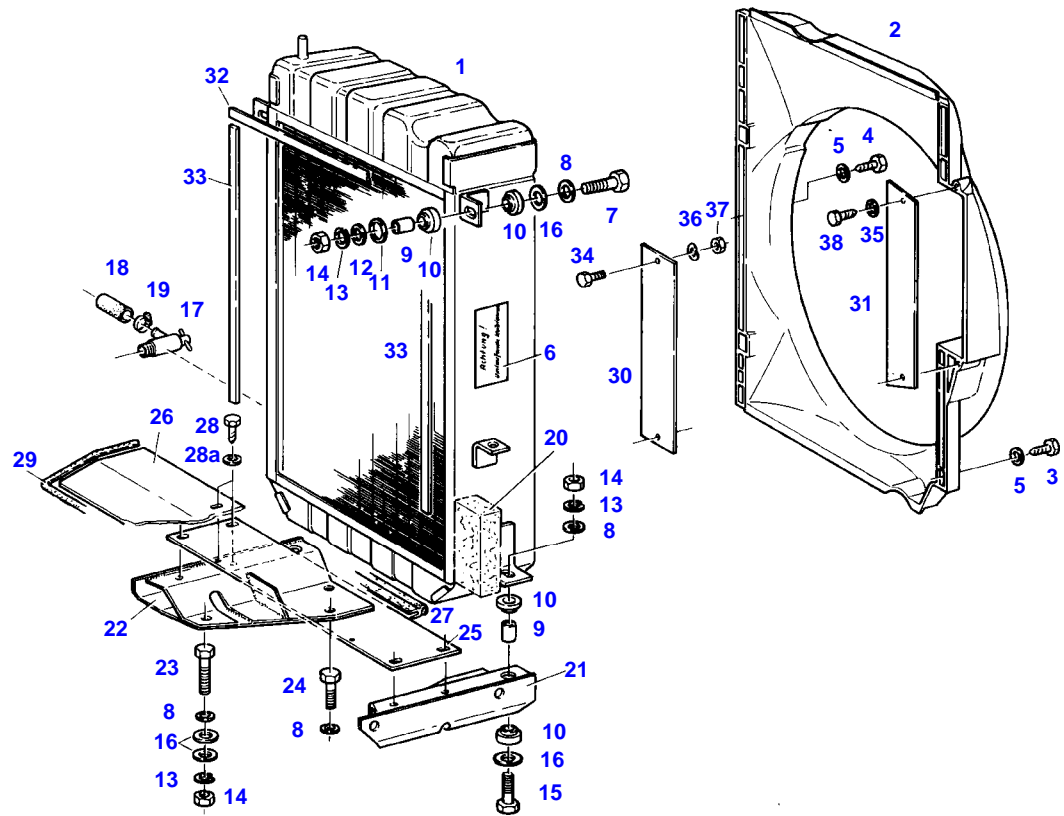


<b>Page Number</b>	<b>Page Title</b>	<b>Page Reference</b>
01-000-TOC	ENGINE, FUEL AND EXHAUST SYSTEM	01-000-TOC
02-000-TOC	AXLES	02-000-TOC
03-000-TOC	STEERING SYSTEM	03-000-TOC
04-000-TOC	DRIVE TRAIN SYSTEM	04-000-TOC
05-000-TOC	COMPRESSED AIR SYSTEM	05-000-TOC
06-000-TOC	HYDRAULIC SYSTEM	06-000-TOC
07-000-TOC	ELECTRICAL SYSTEM	07-000-TOC
08-000-TOC	CAB	08-000-TOC
09-000-TOC	AIR CONDITIONING AND HEATING SYSTEM	09-000-TOC
10-000-TOC	CHASSIS	10-000-TOC
11-000-TOC	WHEELS	11-000-TOC
12-000-TOC	IMPLEMENT LIFT SYSTEM FRONT	12-000-TOC
13-000-TOC	IMPLEMENT LIFT SYSTEM REAR	13-000-TOC
14-000-TOC	FRONT/REAR LOADERS	14-000-TOC
15-000-TOC	ACCESSORIES	15-000-TOC

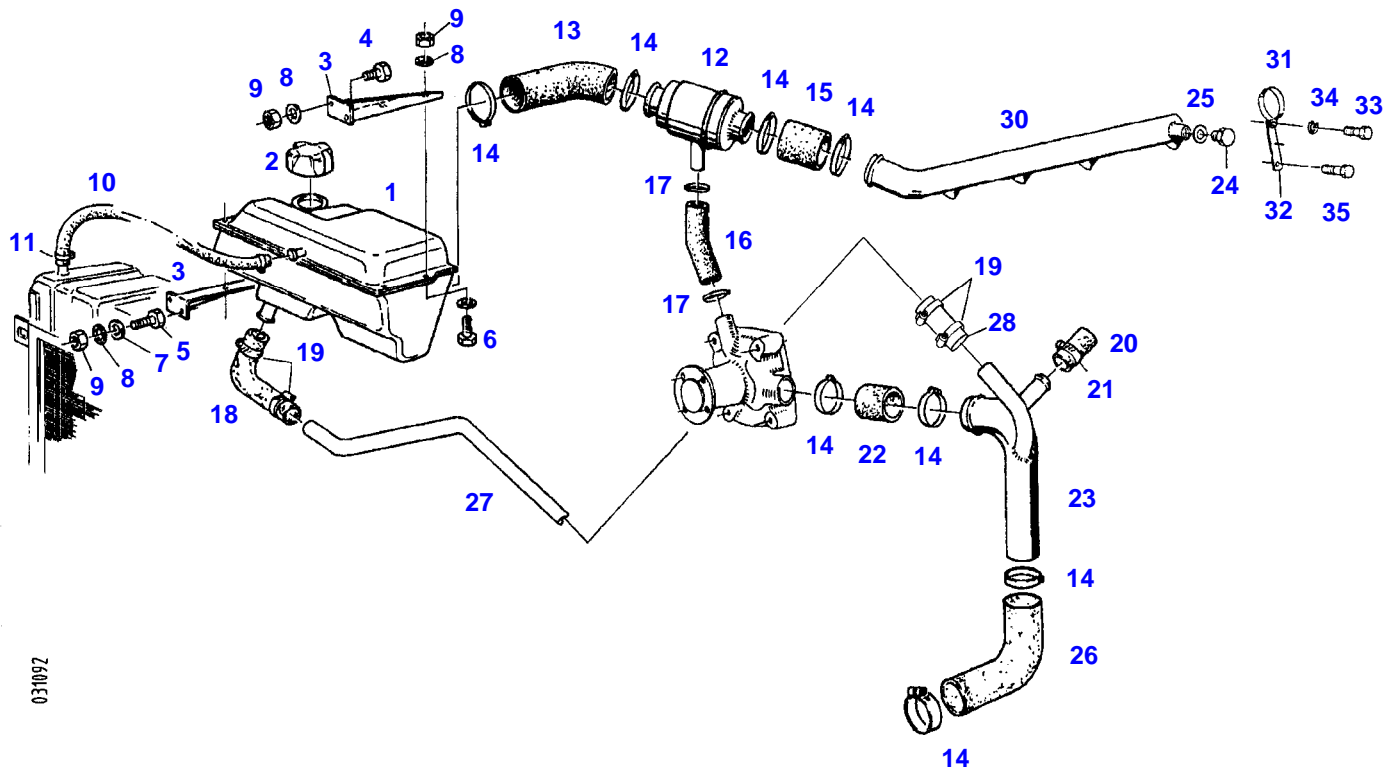
FARMER 310 (192/00001-02000)  
3090



3090

Item	Part Number	Qty	Description Comments	Technical Specification
<b>RANGE OF TEMPERATURE 2 / 1+2 WITH AIR CONDITION</b>				
1	72348656	1	RADIATOR	
2	72396296	1	FAN COVER	
3	72315818	4	SCREW	DIN7976-ST4,2X25-C-A3L
4	72315787	2	SCREW	DIN 7981 B4,2X16-A3L
5	72311817	6	DISC	DIN9021-4,3-140HV-A3L
6	72379109	2	MARKING PLATE	FWN66556-35X68-SCHUTZVORR.N.OE
7	72315663	2	HEXAGONAL HEAD BOLT	DIN 933 M8X40-8.8A3L
8	72311788	10	DISC	DIN 125-8,4-ST.A3L
9	72310718	4	BUSH	
10	72312479	8	UNIVERSAL SPOUT	
11	72311793	2	DISC	DIN 125-17-ST.A3L
12	72311824	2	DISC	DIN9021-8,4-140HV-A3L
13	72315053	8	SPLIT WASHER	FWN 65208-8-A3L
14	72313268	8	NUT	DIN 934 M8-8A3L
15	72315660	2	HEXAGONAL HEAD BOLT	DIN 933 M8X35-8.8A3L
16	72311888	10	DISC	
17	72378063	1	RELIEF VALVE	DIN71401-CM14X1,5KEG
18	72389310	1	HOSE	
19	72438345	1	HOSE CLIP	
20	72396300	2	SEALING STRIP	
21	72357306	1	BRACKET	
22	72357307	1	BRACKET	
23	72315668	4	HEXAGONAL HEAD BOLT	DIN 933 M8X50-8.8A3L
24	72315660	2	HEXAGONAL HEAD BOLT	DIN 933 M8X35-8.8A3L
25	72396301	1	COVER PLATE	
26	72396302	1	SPLASH PANEL	
27	72451235	1	PROTECTIVE STRIP 1X 440 MM CUT TO LENGTH	L=700 FWN 63040
28	72315820	6	SCREW	DIN7976-ST6,3X13-C-A3L
	72311787	6	DISC	DIN 125-6,4-ST.A3L
29	72450971	1	SHAPED CORD 1X 740 MM CUT TO LENGTH	L=1000 FWN 63040 C02
30	72396336	1	PLATE 2WD	
31	72396337	1	COVER PLATE 2WD	
32	72450581	1	SEALING STRIP 1X 450 MM CUT TO LENGTH	L=20M
33	72450581	1	SEALING STRIP 2X 400 MM CUT TO LENGTH	L=20M
34	72315620	2	HEXAGONAL HEAD BOLT 2WD	DIN 933 M5X10-8.8
35	72311818	2	DISC 2WD	DIN9021-5,3-140HV-A3L
36	72315051	2	SPLIT WASHER 2WD	FWN 65208-5-A3L
37	72313264	2	NUT 2WD	DIN 934 M5-8A3L
38	72315814	2	SCREW 2WD	DIN7976-ST4,8X16-F-A3L

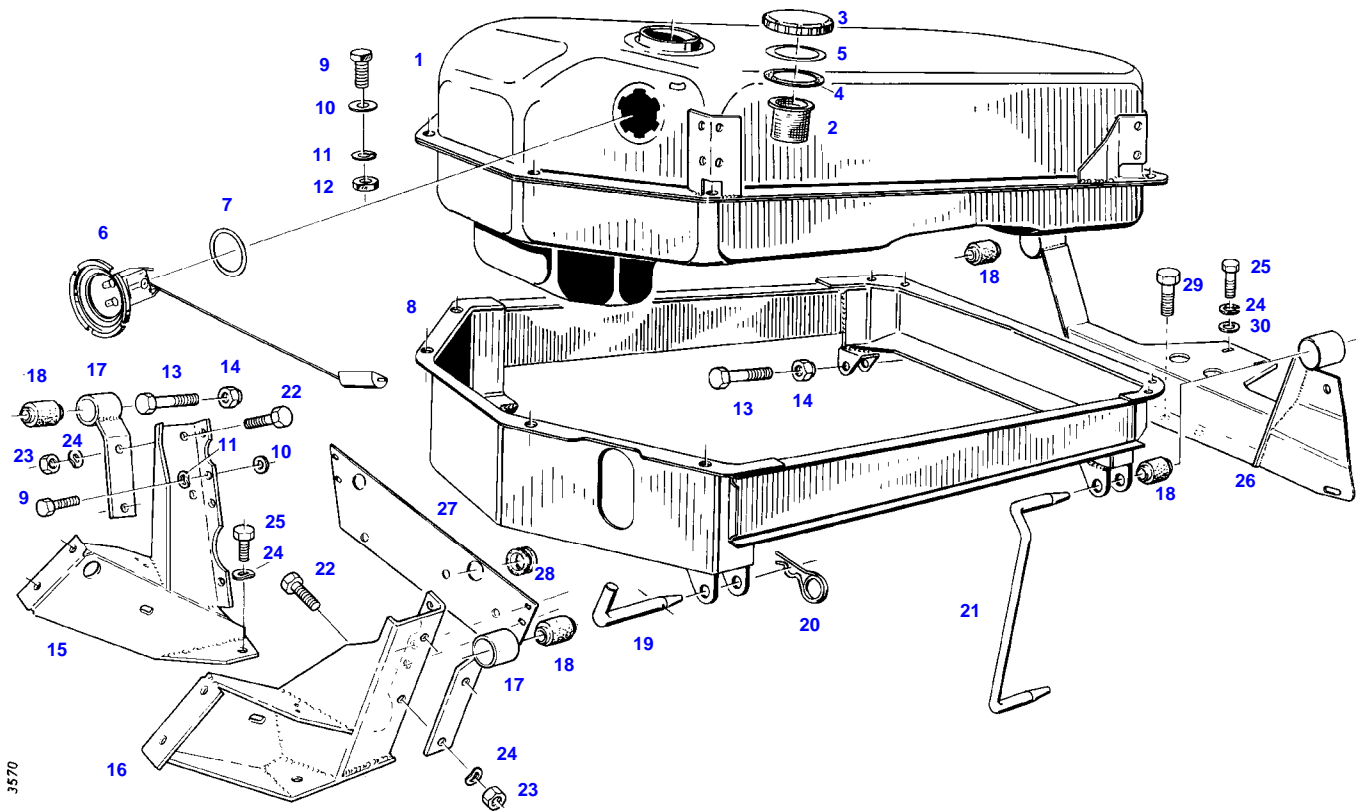
FARMER 310 (192/00001-02000)  
31092



031092

Item	Part Number	Qty	Description Comments	Technical Specification
1	72316897	1	EXPANSION TANK <>	
	72409370	1	CAP	
	72438345	1	HOSE CLIP	
2	72348672	1	COLLER LOCKING	
3	72396298	2	RETAINER	
4	72315629	3	HEXAGONAL HEAD BOLT	DIN 933 M6 X 12-8.8A3L
5	72315626	1	HEXAGONAL HEAD BOLT	DIN 933-M6 X 16-8.8-A3L
6	72315631	4	HEXAGONAL HEAD BOLT	DIN 933 M6 X 20-8.8A3L
7	72311787	1	DISC	DIN 125-6,4-ST.A3L
	72311822	4	DISC	DIN9021-6,4-140HV-A3L
8	72315052	8	SPLIT WASHER	FWN 65208-6-A3L
9	72313266	8	NUT	DIN 934 M6-8A3L
10	72622024	1	PRESSURE HOSE 1X 210 MM CUT TO LENGTH	L=0,50M 8X3,5-FWN65911
11	72438345	2	HOSE CLIP	
12	72380193	1	THERMOSTAT	75GR+-2GR
13	72396299	1	RUBBER ARCH	
14	72311162	8	HOSE CLIP	
15	72450416	1	HOSE 1X 50MM CUT TO LENGTH	L=120 DIN73411-35X
16	72399872	1	RUBBER ARCH	
17	72311167	2	HOSE CLIP	
18	72435869	1	RUBBER ARCH	
19	72311166	4	HOSE CLIP	
20	72404925	1	CAP	
21	72311166	1	HOSE CLIP	
22	72393672	1	REDUCER	
23	72357308	1	SUCTION LINE	
24	72315802	1	SCREW	DIN 7604 AM22X1,5-ST
25	72315101	2	SEALING WASHER	DIN 7603 A22X27-CU
26	72395412	1	RUBBER ARCH	
27	72396303	1	PIPE	
28	72450412	1	HOSE 1X 50MM CUT TO LENGTH	L=1000 18X3,5 R DIN 73411
30	72332460	1	COOLING WATER SUPPLY LINE F192	
31	72337051	2	PIPE CLAMP	
32	72332467	2	PLATE LINK	
33	72315630	2	HEXAGONAL HEAD BOLT	DIN 933 M6X18-8.8A3L
34	72315052	2	SPLIT WASHER	FWN 65208-6-A3L
35	72374403	2	HEXAGONAL HEAD BOLT	DIN 933 M6X10-8.8

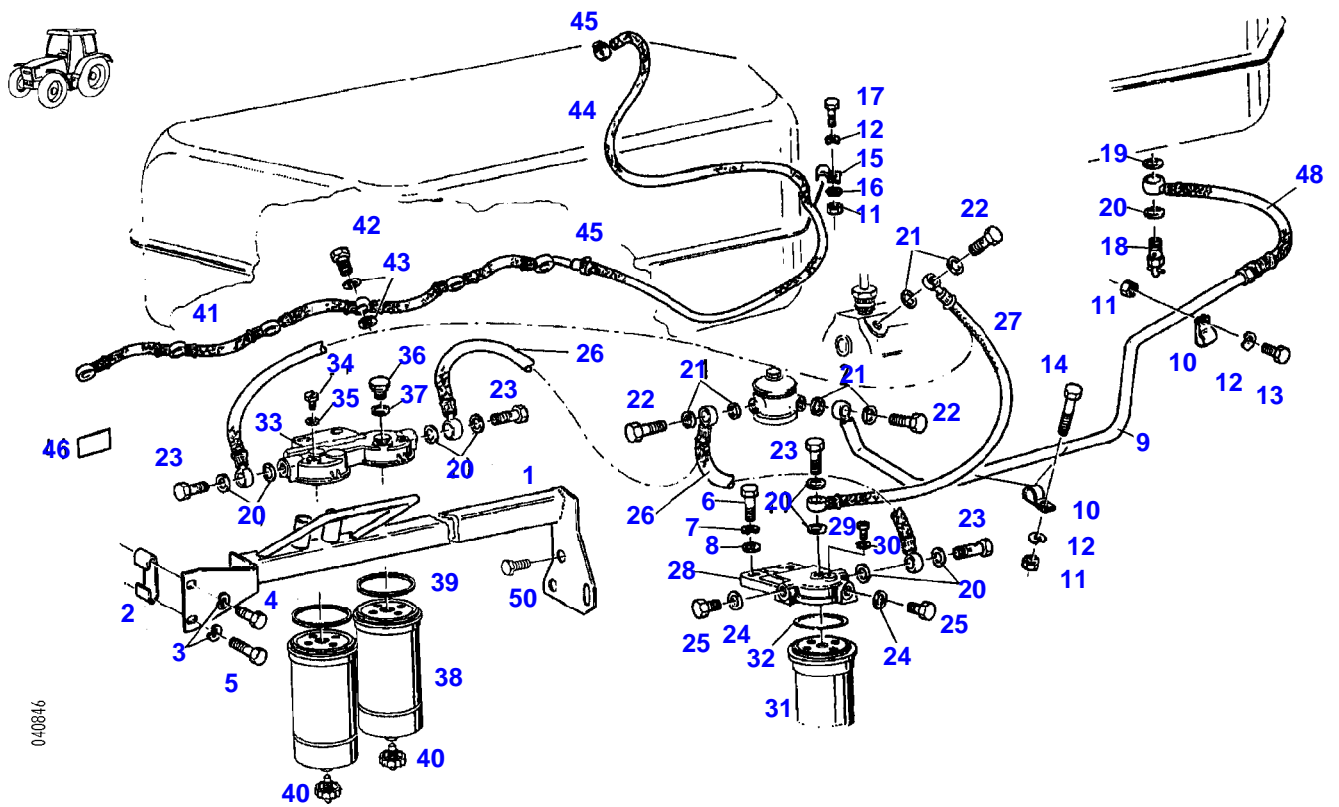
FARMER 310 (192/00001-02000)  
3570



3570

Item	Part Number	Qty	Description Comments	Technical Specification
1	72349994	1	FUEL TANK	
2	72433112	1	STRAINER	60X100-MS
3	72380143	1	FUEL CAP ><3-4 KOEHLER	M.BELUEF
	72348297	1	FUEL CAP ><3-5 BLAU	
4	72312304	1	RUBBER SEAL KOEHLER	
	72330725	1	SEAL BLAU	
5	72330726	1	SEAL BLAU	
6	72613427	1	FUEL LEVEL SENSOR ><7	
7	72315169	1	SEALING WASHER	
8	72357106	1	TANK FRAME	
9	72315626	9	HEXAGONAL HEAD BOLT	DIN 933-M6 X 16-8.8-A3L
10	72311822	16	DISC	DIN9021-6,4-140HV-A3L
11	72317120	10	SPRING WASHER	DIN 137 B6-MECH.VZK
12	72313266	10	NUT	DIN 934 M6-8A3L
13	72315719	2	HEXAGONAL HEAD BOLT	DIN 933 M12X60-8.8A3L
14	72313325	2	NUT	DIN 980-VM12-8-A3L
15	72355440	1	BRACKET LEFT	
16	72355441	1	BRACKET RIGHT	
17	72357100	2	BEARING <>	
	72357100	1	BEARING	
18	72310644	4	RUBBER BUSHING	
19	72407288	2	BEARING PIN	
20	72311183	2	HAIR COTTER PIN	DIN 11024-4-A3L
21	72393681	1	BEARING PIN	
22	72315657	4	HEXAGONAL HEAD BOLT	DIN 933 M8 X 30-8.8A3L
23	72313268	4	NUT	DIN 934 M8-8A3L
24	72317121	12	SPRING WASHER	DIN 137 B8-MECH.VZK
25	72315642	8	HEXAGONAL HEAD BOLT	DIN 933 M8 X 16-8.8A3L
26	72355727	1	CROSSMEMBER	
27	72395911	1	SHEET METAL	
28	72379152	1	CABLE BUSHING	HV1305
29	72315675	2	HEXAGONAL HEAD BOLT	DIN 933 M10X16-8.8A3L
30	72311788	2	DISC	DIN 125-8,4-ST.A3L

FARMER 310 (192/00001-02000)  
40846



040846



Item	Part Number	Qty	Description Comments	Technical Specification
1	72356743	1	RETAINER	
2	72399913	1	HOLDER	
3	72317122	2	SPRING WASHER	DIN 137 B10-MECH.VZK
4	72315689	1	HEXAGONAL HEAD BOLT	DIN 933 M10X35-8.8A3L
5	72315691	1	HEXAGONAL HEAD BOLT	DIN 933 M10X40-8.8A3L
6	72315657	2	HEXAGONAL HEAD BOLT	DIN 933 M8 X 30-8.8A3L
7	72317121	2	SPRING WASHER	DIN 137 B8-MECH.VZK
8	72311824	2	DISC	DIN9021-8,4-140HV-A3L
9	72356707	1	TUBING	
10	72311241	2	PIPE CLAMP	
11	72313266	3	NUT	DIN 934 M6-8A3L
12	72317120	3	SPRING WASHER	DIN 137 B6-MECH.VZK
13	72315626	1	HEXAGONAL HEAD BOLT	DIN 933-M6 X 16-8.8-A3L
14	72315637	1	HEXAGONAL HEAD BOLT	DIN 933 M6X45-8.8A3L
15	72398941	2	FASTENING COLLAR	
16	72311822	4	DISC	DIN9021-6,4-140HV-A3L
17	72315631	2	HEXAGONAL HEAD BOLT	DIN 933 M6 X 20-8.8A3L
18	72380159	1	FUEL SHUT-OFF VALVE	
19	72315093	1	SEALING WASHER	DIN 7603 A12X18-CU
20	72315095	5	SEALING WASHER	DIN 7603 A14X20-CU
21	72315095	6	SEALING WASHER	DIN 7603 A14X20-CU
22	72315808	3	BANJO BOLT	DIN 7643-10-3-A3L
23	72315808	2	BANJO BOLT	DIN 7643-10-3-A3L
24	72315095	2	SEALING WASHER	DIN 7603 A14X20-CU
25	72315799	2	PLUG	DIN 7604 AM14X1,5-A3L
26	72356760	1	FUEL LINE	
27	72355537	1	FUEL LINE	
28	72615599	1	FILTER LID NOT AVAILABLE IN SINGLE PARTS >>29,30	
29	72323290	1	BLEED SCREW	
30	72315084	1	SEALING WASHER	DIN 7603 A6X10-CU
31	72416928	1	FILTER BOX >>32	
32	72314995	1	RUBBER RING	
33	72380173	1	PARALLEL FILTER BOSCH >>33-38 <-- X810.190.166.000 1X <>	
	72416928	2	FILTER BOX	
	72451307	1	COVER KNECHT >>33,34 <>	PARALLELFILT.
	72416928	2	FILTER BOX	
34	72323290	2	BLEED SCREW BOSCH	
	72314699	2	BLEED SCREW KNECHT	
35	72315084	2	SEALING WASHER BOSCH	DIN 7603 A6X10-CU
	72315086	2	SEALING WASHER KNECHT	DIN 7603 A8X11,5-CU
36	72326250	1	SCREW BOSCH	
37	72315095	1	SEALING WASHER BOSCH	DIN 7603 A14X20-CU
38	72416928	2	FILTER BOX >>39	
39	72314995	2	RUBBER RING	
	72416928	2	FILTER BOX	
40	72380174	2	SCREW	
41	72339360	1	LEAKAGE OIL LINE	
42	72315809	4	BANJO BOLT	DIN 7643-4-5-A3L
43	72315086	8	SEALING WASHER	DIN 7603 A8X11,5-CU

---

Fendt

FARMER 310 (192/00001-02000)

F192000

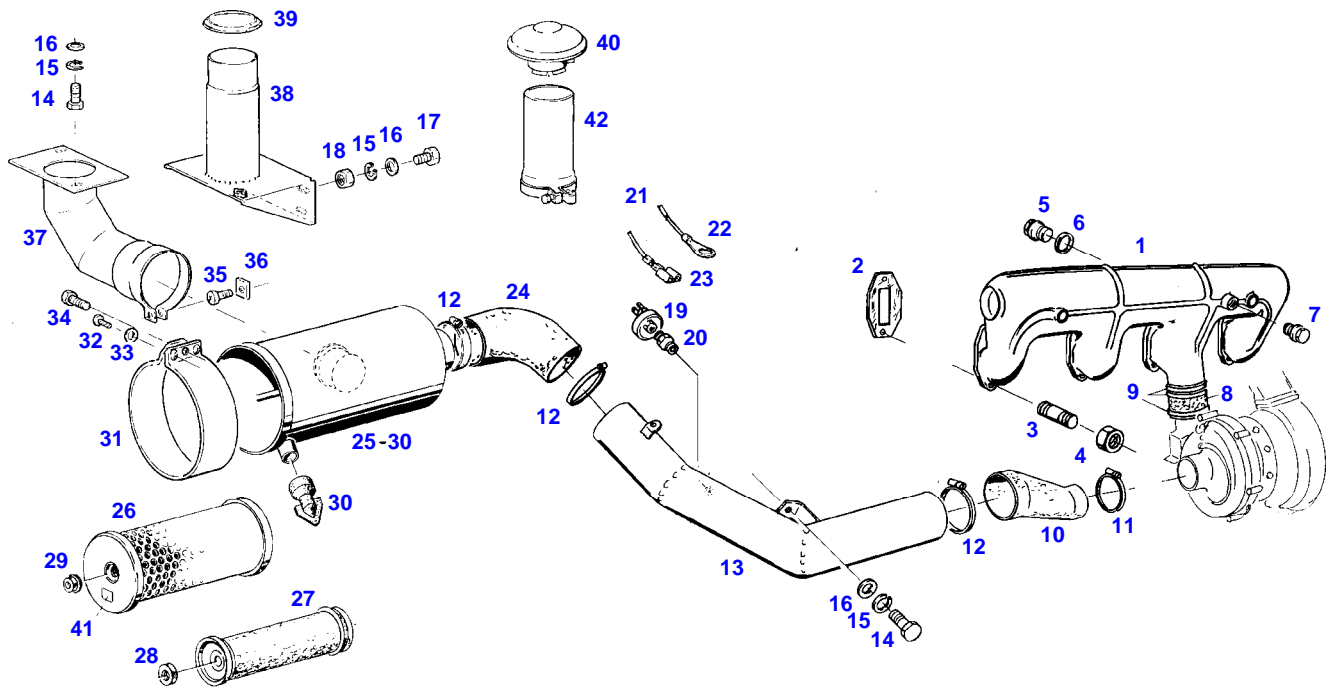
FUEL LINES

Page01-0008

---

Item	Part Number	Qty	Description Comments	Technical Specification
44	72435830	1	PRESSURE HOSE 1150 MM CUT TO LENGTH	L=2100
45	72438345	2	HOSE CLIP	
46	72393682	1	MARKING PLATE	
48	72357312	1	HOSE LINE	
50	72374490	2	HEXAGONAL HEAD BOLT	DIN 933 M14X20-8.8

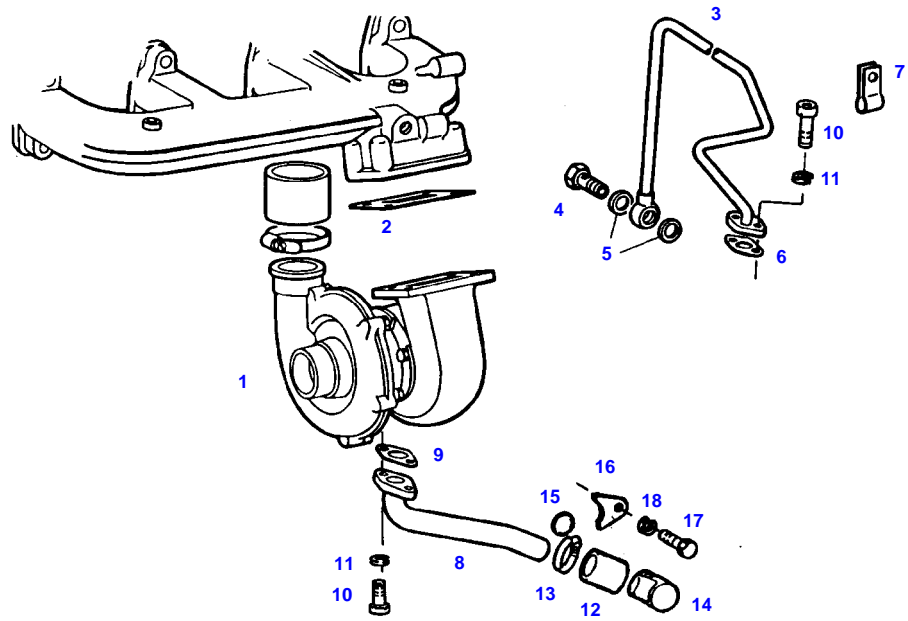
FARMER 310 (192/00001-02000)  
3566



3566

Item	Part Number	Qty	Description Comments	Technical Specification
1	72395914	1	INTAKE MANIFOLD	
2	72329730	4	MOLDED SEAL	
3	72373922	8	STUD BOLT	DIN 835-M10X25-8.8
4	72373015	8	NUT	DIN70615-M10-8-A3B
5	72373975	1	SCREW NOT WITH COLD STARD DEVICE	DIN 910 M20X1,5-ST
6	72376031	1	SEALING WASHER NOT WITH COLD STARD DEVICE	DIN 7603 A20X24-CU
7	72315433	1	SCREW	DIN 906 M14X1,5-ST
8	72332139	1	HOSE PIECE	
9	72311163	3	HOSE CLIP	
10	72395415	1	REDUCER	
11	72311163	1	HOSE CLIP	
12	72311171	3	HOSE CLIP	
13	72357069	1	INTAKE MANIFOLD	
	72357071	1	INTAKE MANIFOLD WITH AIR BRAKING SYSTEM	
14	72315650	3	HEXAGONAL HEAD BOLT	DIN 933 M8 X 20-8.8A3L
15	72315053	5	SPLIT WASHER	FWN 65208-8-A3L
16	72311788	5	DISC	DIN 125-8,4-ST.A3L
17	72315642	2	HEXAGONAL HEAD BOLT	DIN 933 M8 X 16-8.8A3L
18	72313268	2	NUT	DIN 934 M8-8A3L
			--> 192/0390 <> <>	
	72379171	0	WIRE	B1 DIN72551/6.51 SCHWARZ
	72380356	1	CABLE LUG	
	72314686	1	PLUG IN SLEEVE	
19	72316876	1	MAINTENANCE SWITCH	
20	72339032	1	THREADED SOCKET --> 192/0390	
21			NO LONGER AVAILABLE	
22	72380356	1	CABLE LUG	
23	72314686	1	PLUG IN SLEEVE	
24	72395421	1	RUBBER ARCH	
25	72348611	1	AIR FILTER ><25-30	
	72332518	1	COVER	
26	72332577	1	MICRO-TOP CARTRIDGE	
27	72332126	1	SAFETY CARTRIDGE	
28	72372827	1	NUT	DIN 934 M16X1,5-10A3L
29	72339030	1	COLLAR NUT	
30	72332513	1	DUST DISCHARGE VALVE	
31	72396306	1	CLAMP	
32	72315814	2	SCREW	DIN7976-ST4,8X16-F-A3L
33	72311785	2	DISC	DIN 125-5,3-ST.A3L
34	72315634	1	HEXAGONAL HEAD BOLT	DIN 933 M6X30-8.8A3L
35	72374982	1	OVAL HEAD SCREW	DIN 7985 M6X25-4.8A3L
36	72372783	1	SQUARE NUT	DIN 557 M6-5 A3L
37	72357316	1	PIPE BEND	
38	72357318	1	CONSOLE	
39	72396307	1	SEALING RING	
40	72331302	1	RAIN CAP	
41	72405883	1	ABSORPTION INDICATOR	
42	72384313	1	CONNECTING PIPE	

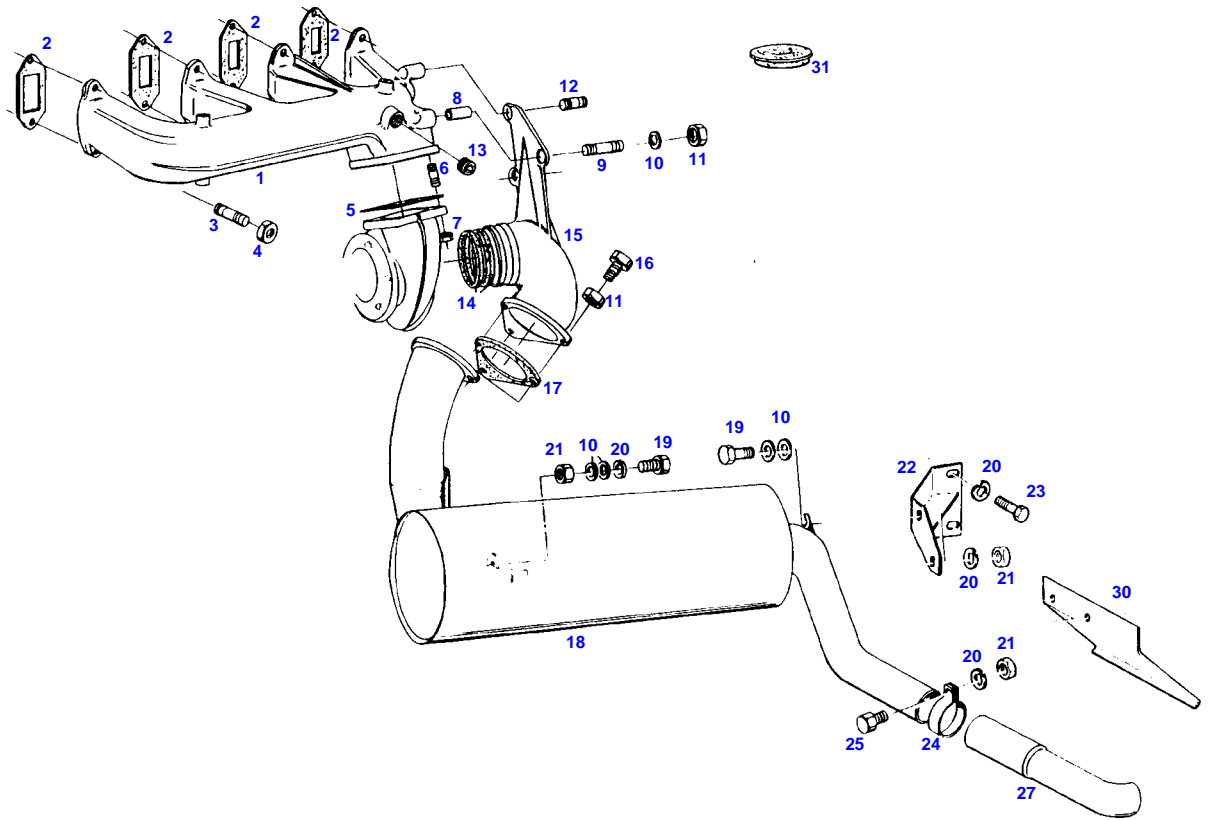
FARMER 310 (192/00001-02000)  
5274



5274

Item	Part Number	Qty	Description Comments	Technical Specification
1	72332433	1	TURBOCHARGER	
	72332434	1	SPARE PARTS KIT	
2			SEE EXHAUST	
3	72332435	1	LUBE OIL LINE	
4	72374956	1	BANJO BOLT	DIN7623/3.70-A10-6.8
5	72315098	2	SEALING WASHER	DIN 7603 A16X22-CU
6	72332436	1	OVAL GASKET	
7	72332437	1	PIPE CLAMP	
8	72332438	1	LUBE OIL LINE	
9	72332161	1	OVAL GASKET	
10	72374020	2	SOCKET HEAD BOLT	DIN 912 M8X20-10.9
	72315474	2	SOCKET HEAD BOLT	
11	72315053	4	SPLIT WASHER	FWN 65208-8-A3L
12	72332160	1	HOSE PIECE	
13	72311167	2	HOSE CLIP	
14	72332440	1	MANIFOLD	
15			NOT USED	
16			NOT USED	
17			NOT USED	
18			NOT USED	

FARMER 310 (192/00001-02000)  
3572

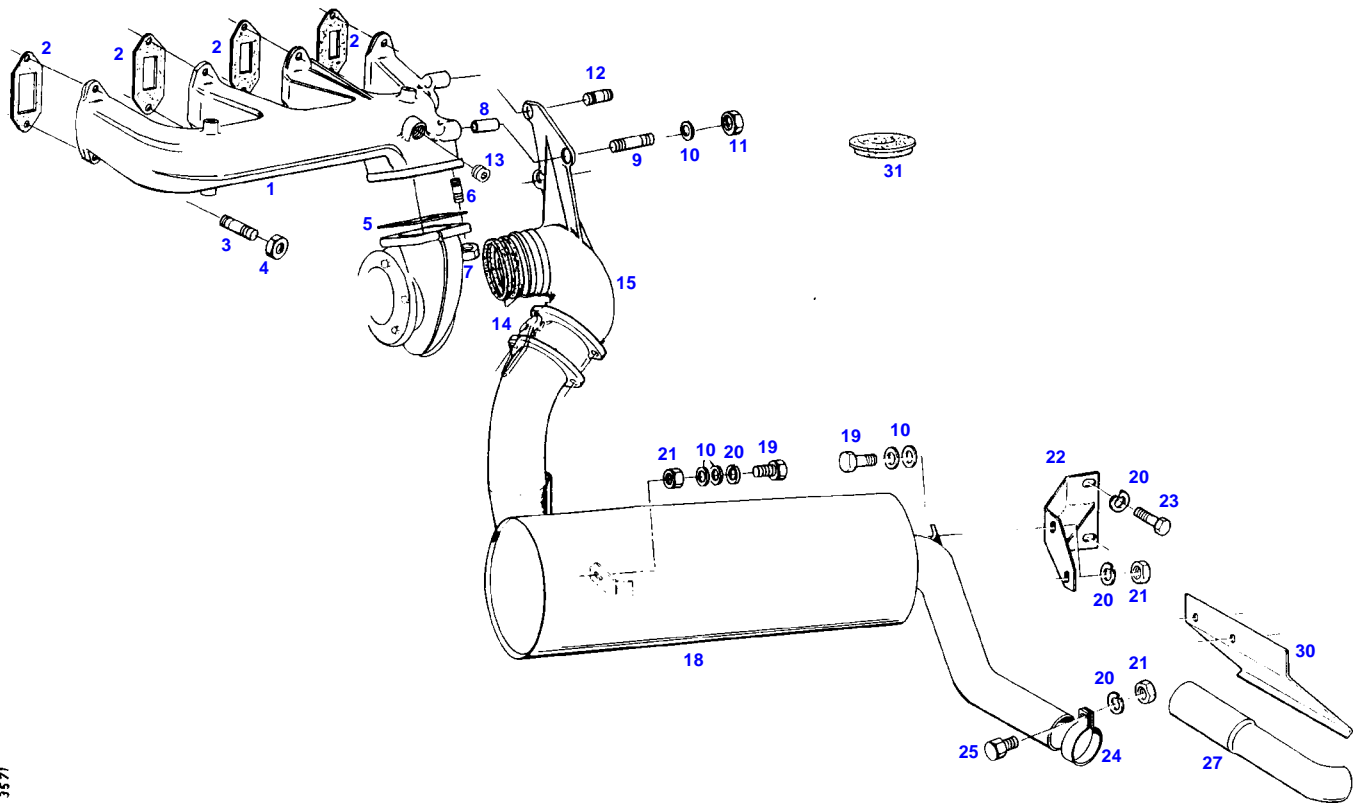


3572

Item	Part Number	Qty	Description Comments	Technical Specification
1	72332443	1	EXHAUST PIPE	
2	72332145	4	MOLDED SEAL	
3	72374647	8	STUD BOLT	DIN 939-M10X40-8.8
4	72373015	8	NUT	DIN70615-M10-8-A3B
5	72332442	1	MOLDED SEAL	
6	72313770	4	STUD BOLT	FWN64891-M8X20-8.8
7	72313269	4	NUT	DIN 934 M8-8C2A
8	72395427	1	SPACER TUBE	
9	72313775	1	STUD BOLT	DIN 939 M8X70-8.8A3L
10	72311788	11	DISC	DIN 125-8,4-ST.A3L
11	72313269	6	NUT	DIN 934 M8-8C2A
12	72313770	2	STUD BOLT	FWN64891-M8X20-8.8
13	72373954	1	SCREW	DIN 906-R3/8-ST
14	72377180	2	PISTON RING	ISO6622-1 R-70X2-MC12
15	72395426	1	MANIFOLD	
16	72315653	3	HEXAGONAL HEAD BOLT	DIN 933 M8 X 25-8.8A3L
17	72407298	1	MOLDED SEAL	
18	72357115	1	EXHAUST MUFFLER	
			<>	
	72315534	3	HEXAGONAL HEAD BOLT	DIN 931 M8 X 70-8.8
	72407298	2	MOLDED SEAL	
	72395941	1	INTERMEDIATE PIECE	
19	72315646	3	HEXAGONAL HEAD BOLT	DIN 933 M8X18-8.8A3L
20	72315053	6	SPLIT WASHER	FWN 65208-8-A3L
21	72313268	4	NUT	DIN 934 M8-8A3L
22	72357075	1	GUSSET PLATE	
23	72315642	2	HEXAGONAL HEAD BOLT	DIN 933 M8 X 16-8.8A3L
24	72373437	1	PIPE CLAMP	DIN71555-63,5 EDELSTAHL
25	72315657	1	HEXAGONAL HEAD BOLT	DIN 933 M8 X 30-8.8A3L
27	72393695	1	EXHAUST TAILPIPE	
30	72395889	1	DEFLECTOR	
31	72395945	1	COVER	



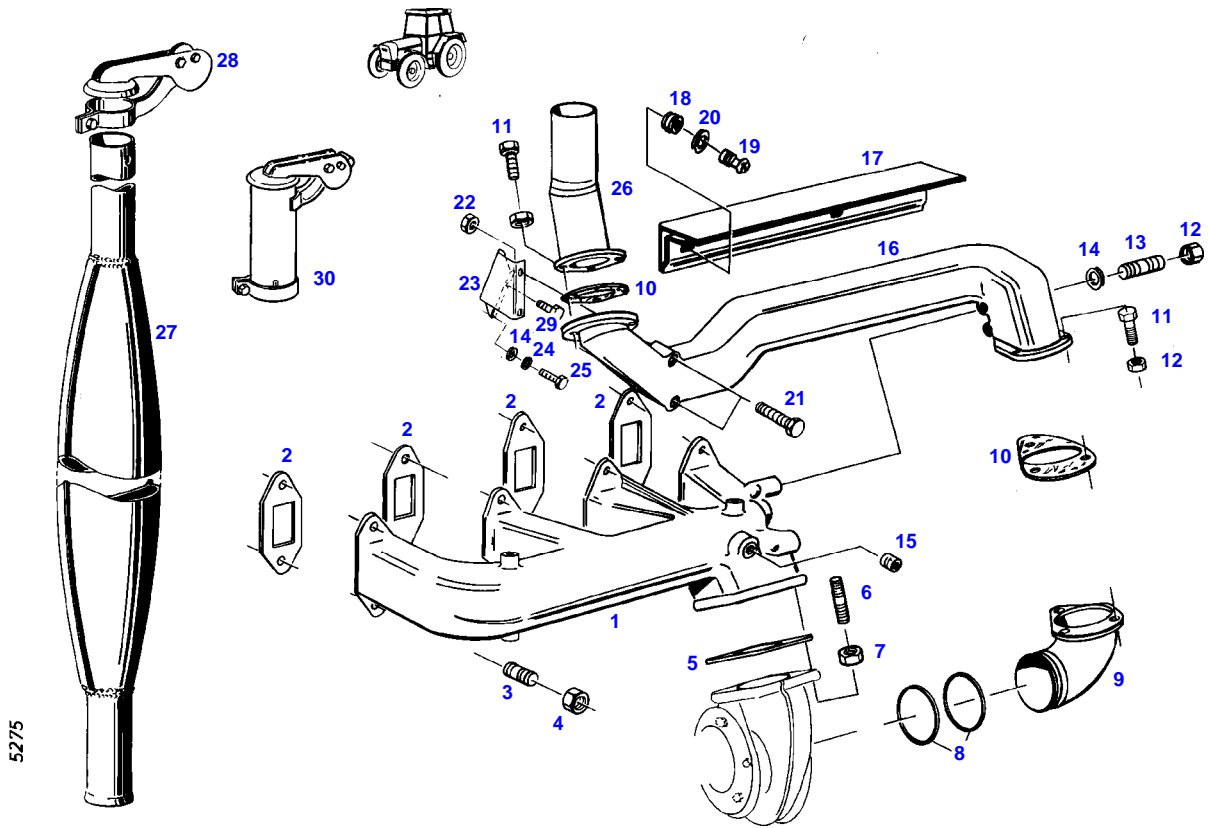
FARMER 310 (192/00001-02000)  
3571



3571

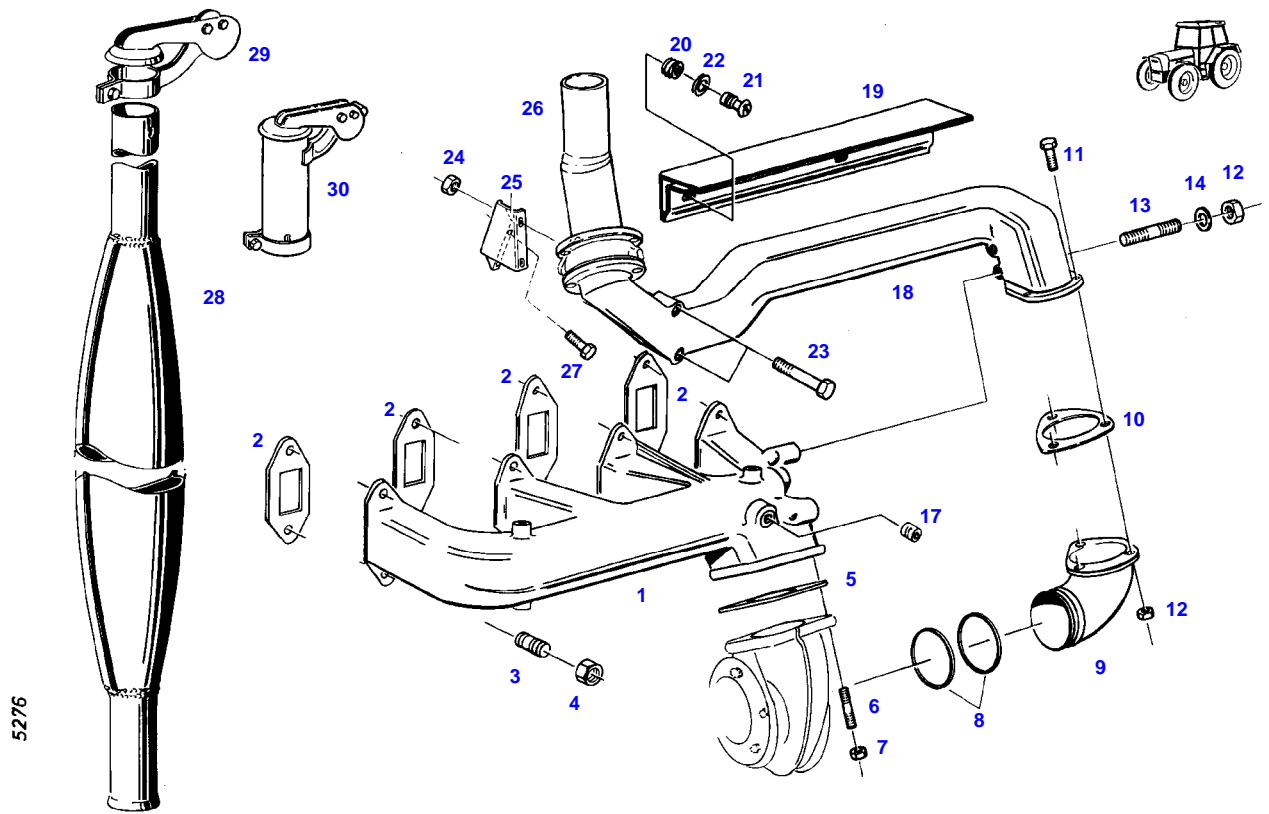
Item	Part Number	Qty	Description Comments	Technical Specification
<b>ENGINE BRAKE</b>				
1	72332443	1	EXHAUST PIPE	
2	72332145	4	MOLDED SEAL	
3	72374647	8	STUD BOLT	DIN 939-M10X40-8.8
4	72373015	8	NUT	DIN70615-M10-8-A3B
5	72332442	1	MOLDED SEAL	
6	72313770	4	STUD BOLT	FWN64891-M8X20-8.8
7	72313269	4	NUT	DIN 934 M8-8C2A
8	72395427	1	SPACER TUBE	
9	72313775	1	STUD BOLT	DIN 939 M8X70-8.8A3L
10	72311788	11	DISC	DIN 125-8,4-ST.A3L
11	72313269	3	NUT	DIN 934 M8-8C2A
12	72313770	2	STUD BOLT	FWN64891-M8X20-8.8
13	72373954	1	SCREW	DIN 906-R3/8-ST
14	72377180	2	PISTON RING	ISO6622-1 R-70X2-MC12
15	72395426	1	MANIFOLD	
18	72357115	1	EXHAUST MUFFLER	
19	72315646	3	HEXAGONAL HEAD BOLT	DIN 933 M8X18-8.8A3L
20	72315053	6	SPLIT WASHER	FWN 65208-8-A3L
21	72313268	4	NUT	DIN 934 M8-8A3L
22	72357075	1	GUSSET PLATE	
23	72315642	2	HEXAGONAL HEAD BOLT	DIN 933 M8 X 16-8.8A3L
24	72373437	1	PIPE CLAMP	DIN71555-63,5 EDELSTAHL
25	72315657	1	HEXAGONAL HEAD BOLT	DIN 933 M8 X 30-8.8A3L
27	72393695	1	EXHAUST TAILPIPE	
30	72395889	1	DEFLECTOR	
31	72395945	1	COVER	

FARMER 310 (192/00001-02000)  
5275



Item	Part Number	Qty	Description Comments	Technical Specification
1	72332443	1	EXHAUST PIPE	
2	72332145	4	MOLDED SEAL	
3	72313777	8	STUD BOLT	DIN 939 M10X35-8.8
4	72373015	8	NUT	DIN70615-M10-8-A3B
5	72332442	1	MOLDED SEAL	
6	72313770	4	STUD BOLT	FWN64891-M8X20-8.8
7	72313269	4	NUT	DIN 934 M8-8C2A
8	72377180	2	PISTON RING	ISO6622-1 R-70X2-MC12
9	72395430	1	BEND	
10	72407298	2	MOLDED SEAL	
11	72315653	6	HEXAGONAL HEAD BOLT	DIN 933 M8 X 25-8.8A3L
12	72313269	8	NUT	DIN 934 M8-8C2A
13	72313775	2	STUD BOLT	DIN 939 M8X70-8.8A3L
14	72311788	3	DISC	DIN 125-8,4-ST.A3L
15	72373954	1	SCREW	DIN 906-R3/8-ST
16	72395429	1	EXHAUST PIPE	
17	72356725	1	SHIELD	
18	72372509	2	THREADED INSERT	M4
19	72315614	2	HEXAGONAL HEAD BOLT	DIN 933-M4X8-8.8-A3L
20	72311817	2	DISC	DIN9021-4,3-140HV-A3L
21	72374183	2	HEXAGONAL HEAD BOLT	DIN 931 M10X75-8.8
22	72313272	2	NUT	DIN 934 M10-8A3L
23	72395431	1	RETAINER	
24			SEE FUEL ASSEMBLY	
25			SEE FUEL ASSEMBLY	
26	72357076	1	PIPE	
27	72356726	1	EXHAUST MUFFLER	
28	72348549	1	EXHAUST WEATHER CAP	
29	72315653	1	HEXAGONAL HEAD BOLT	DIN 933 M8 X 25-8.8A3L
	72313268	1	NUT	DIN 934 M8-8A3L
	72315053	1	SPLIT WASHER	FWN 65208-8-A3L
30	72451055	1	EXHAUST EXTENSION SWEDEN	UP WITH WEATHER CAP

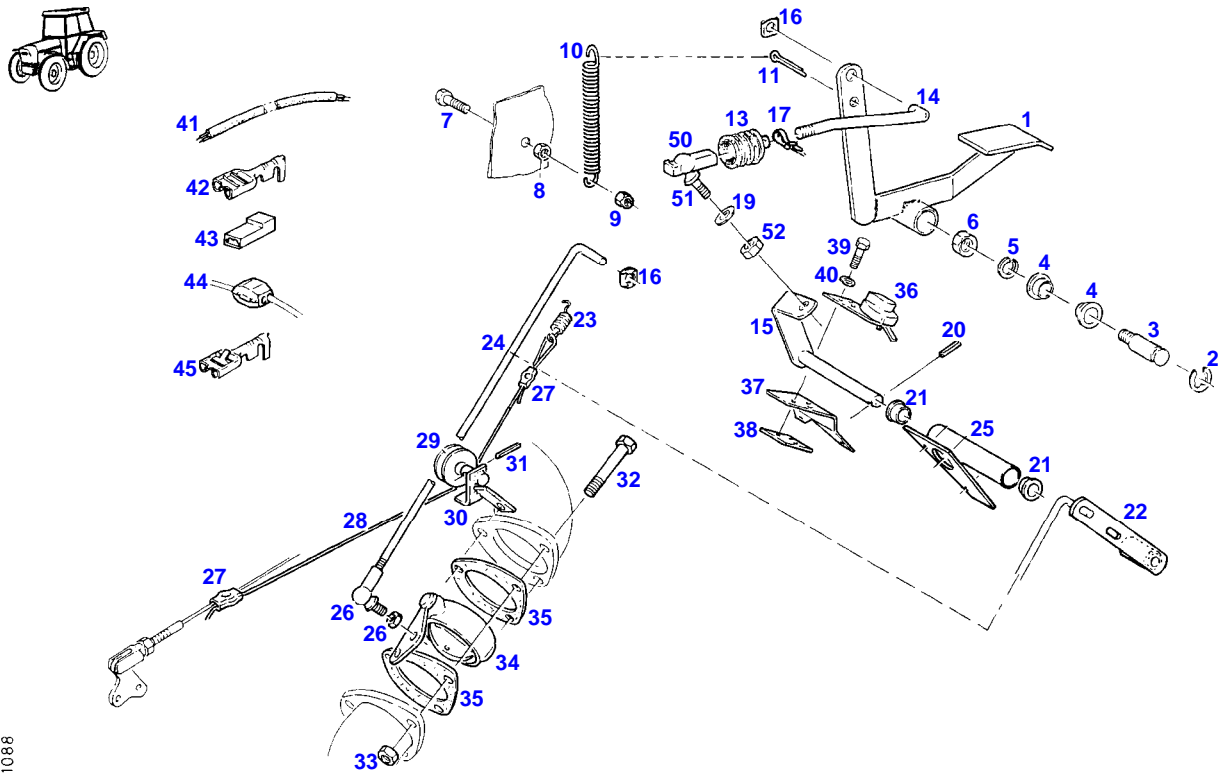
FARMER 310 (192/00001-02000)  
5276



5276

Item	Part Number	Qty	Description Comments	Technical Specification
<b>ENGINE BRAKE</b>				
1	72332443	1	EXHAUST PIPE	
2	72332145	4	MOLDED SEAL	
3	72313777	8	STUD BOLT	DIN 939 M10X35-8.8
4	72373015	8	NUT	DIN70615-M10-8-A3B
5	72332442	1	MOLDED SEAL	
6	72313770	4	STUD BOLT	FWN64891-M8X20-8.8
7	72313269	4	NUT	DIN 934 M8-8C2A
8	72377180	2	PISTON RING	ISO6622-1 R-70X2-MC12
9	72395430	1	BEND	
10	72407298	1	MOLDED SEAL	
11	72315653	3	HEXAGONAL HEAD BOLT	DIN 933 M8 X 25-8.8A3L
12	72313269	5	NUT	DIN 934 M8-8C2A
13	72313775	2	STUD BOLT	DIN 939 M8X70-8.8A3L
14	72311788	2	DISC	DIN 125-8,4-ST.A3L
17	72373954	1	SCREW	DIN 906-R3/8-ST
18	72395429	1	EXHAUST PIPE	
19	72356725	1	SHIELD	
20	72372509	2	THREADED INSERT	M4
21	72315614	2	HEXAGONAL HEAD BOLT	DIN 933-M4X8-8.8-A3L
22	72311817	2	DISC	DIN9021-4,3-140HV-A3L
23	72374183	2	HEXAGONAL HEAD BOLT	DIN 931 M10X75-8.8
24	72313272	2	NUT	DIN 934 M10-8A3L
25	72395431	1	RETAINER	
26	72357080	1	PIPE	
27	72315653	1	HEXAGONAL HEAD BOLT	DIN 933 M8 X 25-8.8A3L
	72313268	1	NUT	DIN 934 M8-8A3L
	72315053	1	SPLIT WASHER	FWN 65208-8-A3L
28	72356726	1	EXHAUST MUFFLER	
29	72348549	1	EXHAUST WEATHER CAP	
30	72451055	1	EXHAUST EXTENSION	UP WITH WEATHER CAP

FARMER 310 (192/00001-02000)  
11088

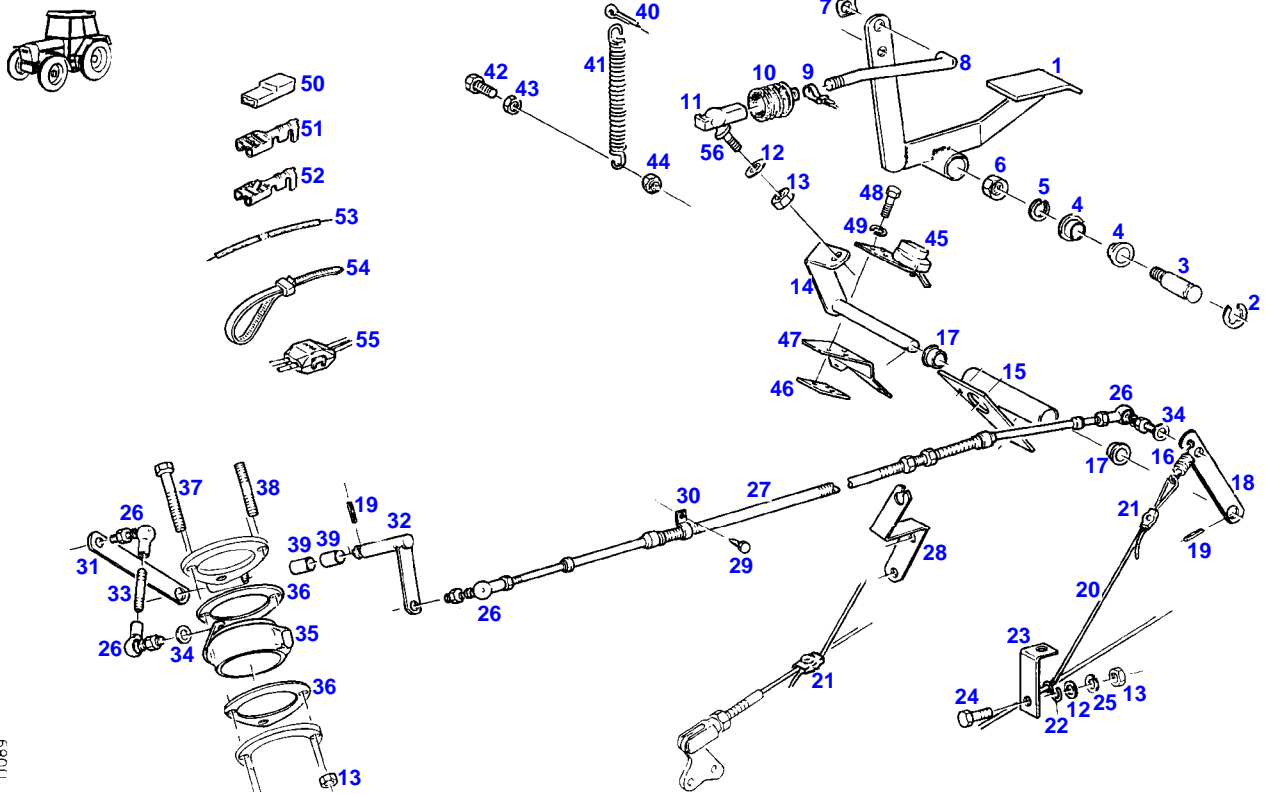


11088

Item	Part Number	Qty	Description Comments	Technical Specification
<b>EXHAUST TO BOTTOM</b>				
1	72356732	1	FOOT LEVER	
2	72317146	1	LOCK WASHER	DIN6799-12-A3L
3	72394196	1	CARRIER	
4	72310596	2	BUSH	
5	72315054	1	SPLIT WASHER	FWN 65208-10-A3L
6	72313272	1	NUT	DIN 934 M10-8A3L
7	72315630	1	HEXAGONAL HEAD BOLT	DIN 933 M6X18-8.8A3L
8	72313266	1	NUT	DIN 934 M6-8A3L
9	72313318	1	NUT	DIN6925-M6-8-A3L
10	72394186	1	PULLING SPRING	
11	72313879	1	COTTER	DIN 94-5X20-ST.A3L
13	72377280	1	BELLOWS	
14	72395891	1	ROD	
15	72357081	1	LEVER	
16	72311180	2	DUO-CLIP	8 SXN10
17	72316916	3	CABLE STRAP	FWN 66650 B175X4-SW
	72438345	1	HOSE CLIP	
19	72311788	1	DISC	DIN 125-8,4-ST.A3L
20	72375133	1	TENSIONING PIN	ISO8752-4X24-A-ST-OB3
21	72393653	2	BUSH	
22	72395892	1	PLATE LINK	
23	72316492	1	PULLING SPRING	
24	72396323	1	ROD	
25	72357761	1	BEARING	
26	72375277	1	ANGLE JOINT	DIN71802 AS13 SW11-A3L
27	72333529	2	CABLE CLAMP	
28	72450805	1	ROPE	L=1000 DIN 3055-2-FE-ZNK 15
			1X 720 MM CUT TO LENGTH	
29	72315323	1	CABLE SHEAVE	
30	72356733	1	BEARING PIN	
31	72313796	1	TENSIONING PIN	ISO8752-3X18-A-ST-OB3 FWN10256
32	72315672	3	HEXAGONAL HEAD BOLT	DIN 933 M8X70-8.8A3L
33	72313269	3	NUT	DIN 934 M8-8C2A
34	72348550	1	ENGINE BRAKE	
35	72407298	2	MOLDED SEAL	
36	72380877	1	ROTARY SWITCH	
37	72396322	1	ANGLE	
38	72394364	1	THREADED PLATE	
39	72315621	3	HEXAGONAL HEAD BOLT	DIN 933 M5X12-8.8A3L
40	72315051	3	SPLIT WASHER	FWN 65208-5-A3L
41				
NO LONGER AVAILABLE				
42	72314686	2	PLUG IN SLEEVE	
43	72316071	2	BUSHING INSULATOR	
44	72379227	1	CABLE CONNECTOR	
45	72314785	1	PLUG IN SLEEVE	
50	72316306	1	BALL SOCKET	13SXN03R
51	72313853	1	BALL PIN	DIN 71803-C13-ST-A3L
52	72313268	1	NUT	DIN 934 M8-8A3L



FARMER 310 (192/00001-02000)  
11089



11089

Item	Part Number	Qty	Description Comments	Technical Specification
<b>EXHAUST UPRIGHT</b>				
1	72356732	1	FOOT LEVER	
2	72317146	1	LOCK WASHER	DIN6799-12-A3L
3	72394196	1	CARRIER	
4	72310596	2	BUSH	
5	72315054	1	SPLIT WASHER	FWN 65208-10-A3L
6	72313272	1	NUT	DIN 934 M10-8A3L
7	72311180	1	DUO-CLIP	8 SXN10
8	72395891	1	ROD	
9	72316916	1	CABLE STRAP	FWN 66650 B175X4-SW
	72438345	1	HOSE CLIP	
10	72377280	1	BELLOWS	
11	72316306	1	BALL SOCKET	13SXN03R
12	72311788	2	DISC	DIN 125-8,4-ST.A3L
13	72313269	4	NUT	DIN 934 M8-8C2A
14	72357336	1	LEVER	
15	72357761	1	BEARING	
	72315653	2	HEXAGONAL HEAD BOLT	DIN 933 M8 X 25-8.8A3L
16	72316492	1	PULLING SPRING	
17	72393653	2	BUSH	
18	72395892	1	PLATE LINK	
19	72375133	2	TENSIONING PIN	ISO8752-4X24-A-ST-OB3
20	72450805	1	ROPE 1X 720 MM CUT TO LENGTH	L=1000 DIN 3055-2-FE-ZNK 15
21	72333529	2	CABLE CLAMP	
22	72312621	1	HOOK	
23	72393706	1	ANGLE	
24	72315646	1	HEXAGONAL HEAD BOLT	DIN 933 M8X18-8.8A3L
25	72315053	1	SPLIT WASHER	FWN 65208-8-A3L
26	72375274	4	ANGLE JOINT	DIN71802 AS10 SW8-A3L
27	72380131	1	REMOTE OPERATION	
28	72395896	1	RETAINING BRACKET	
	72311237	1	FASTENING COLLAR	DIN 72571-1X10-ST A3L
29	72374968	1	SCREW	DIN7976-ST4,8X9,5-C-A3L
30	72394902	1	RETAINER --> 192/1460	
	72311237	1	FASTENING COLLAR <-- 192/1461	DIN 72571-1X10-ST A3L
31	72395893	1	LEVER	
32	72357085	1	LEVER	
33	72372581	1	THREADED PIN	DIN 915 M6X25-45H
34	72311787	2	DISC	DIN 125-6,4-ST.A3L
35	72348551	1	ENGINE BRAKE	
36	72407298	2	MOLDED SEAL	
37	72315672	2	HEXAGONAL HEAD BOLT	DIN 933 M8X70-8.8A3L
38	72374632	1	STUD BOLT	DIN 939 M8X55-8.8
39	72310681	2	BEARING BUSHING	FWN 66050 B1215
40	72313879	1	COTTER	DIN 94-5X20-ST.A3L
41	72394186	1	PULLING SPRING	
42	72315630	1	HEXAGONAL HEAD BOLT	DIN 933 M6X18-8.8A3L
43	72313266	3	NUT	DIN 934 M6-8A3L
44	72313318	1	NUT	DIN6925-M6-8-A3L
45	72380877	1	ROTARY SWITCH	
46	72394364	1	THREADED PLATE	
47	72396322	1	ANGLE	
48	72315621	3	HEXAGONAL HEAD BOLT	DIN 933 M5X12-8.8A3L
49	72315051	3	SPLIT WASHER	FWN 65208-5-A3L
50	72316071	2	BUSHING INSULATOR	
51	72314686	2	PLUG IN SLEEVE	
52	72314785	1	PLUG IN SLEEVE	
53			NO LONGER AVAILABLE	

---

Fendt

FARMER 310 (192/00001-02000)

F192000

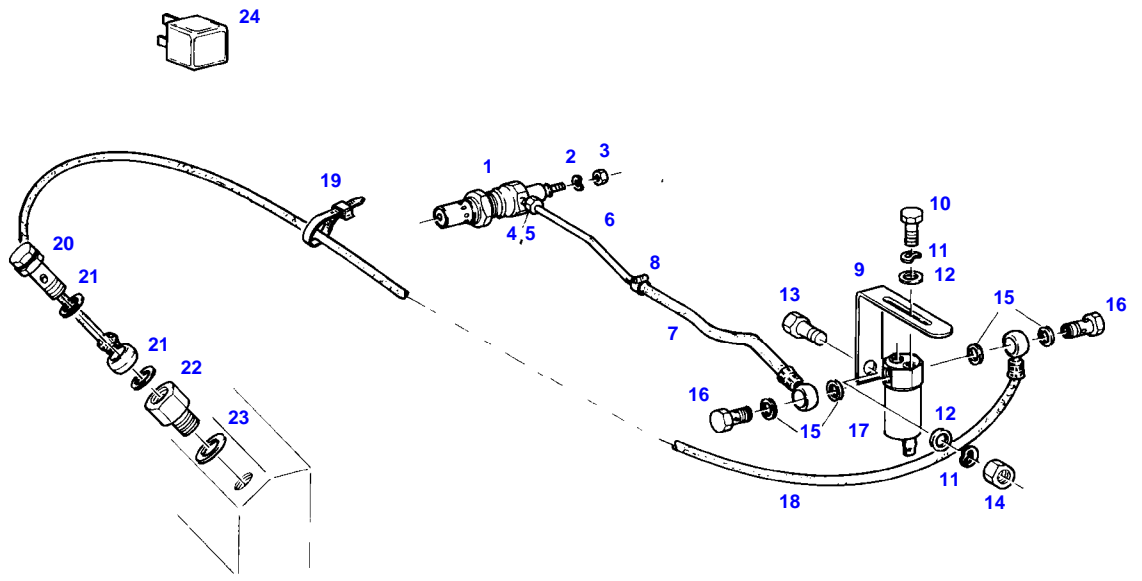
EXHAUST BRAKE

Page01-0016

---

Item	Part Number	Qty	Description Comments	Technical Specification
54	72316916	2	CABLE STRAP	FWN 66650 B175X4-SW
55	72379227	1	CABLE CONNECTOR	
56	72313853	1	BALL PIN	DIN 71803-C13-ST-A3L

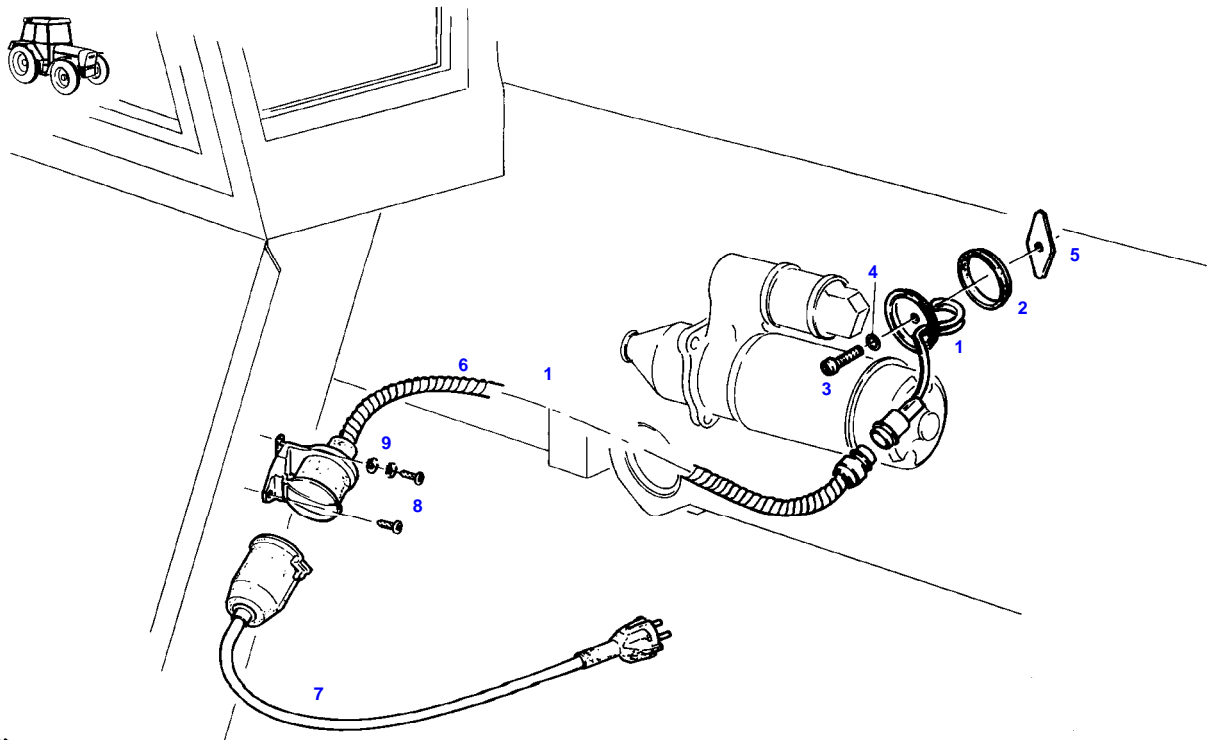
FARMER 310 (192/00001-02000)  
3564



3564

Item	Part Number	Qty	Description Comments	Technical Specification
1	72433489	1	ROD FLAME GLOW PLUG	
2	72317119	1	SPRING WASHER	DIN 137 B5-MECH.VZK
3	72313264	1	NUT	DIN 934 M5-8A3L
4	72377312	1	DOUBLE V-RING	DIN 3862-6-9SMNPB28K+G
5	72378005	1	CONNECTING NUT	DIN 3870 ALL6-9S20K A3L
6	72395442	1	PIPE	
7	72357086	1	LINE	
8	72438345	1	HOSE CLIP	
9	72395451	1	ANGLE	
10	72315629	2	HEXAGONAL HEAD BOLT	DIN 933 M6 X 12-8.8A3L
11	72317120	3	SPRING WASHER	DIN 137 B6-MECH.VZK
12	72311787	3	DISC	DIN 125-6,4-ST.A3L
13	72315626	1	HEXAGONAL HEAD BOLT	DIN 933-M6 X 16-8.8-A3L
14	72313266	1	NUT	DIN 934 M6-8A3L
15	72315088	4	SEALING WASHER	DIN 7603 A10X13,5-CU
16	72315806	2	BANJO BOLT	DIN 7643-6-3-A3L
17	72317090	1	VALVE SOLENOID	
18	72356767	1	FUEL LINE	
19	72316916	2	CABLE STRAP	FWN 66650 B175X4-SW
20	72380268	1	BLEED AND DRAIN VALVE	
21	72315094	2	SEALING WASHER	DIN 7603 A14X18-CU
22	72393707	1	REDUCER	
23	72315097	1	SEALING WASHER	DIN 7603 A16X20-CU
24	72428226	1	GLOW TIME RELAY	

FARMER 310 (192/00001-02000)  
4574



4574

Thank you so much for reading.  
Please click the “Buy Now!”  
button below to download the  
complete manual.



After you pay.

You can download the most  
perfect and complete manual in  
the world immediately.

Our support email:

[ebooklibonline@outlook.com](mailto:ebooklibonline@outlook.com)