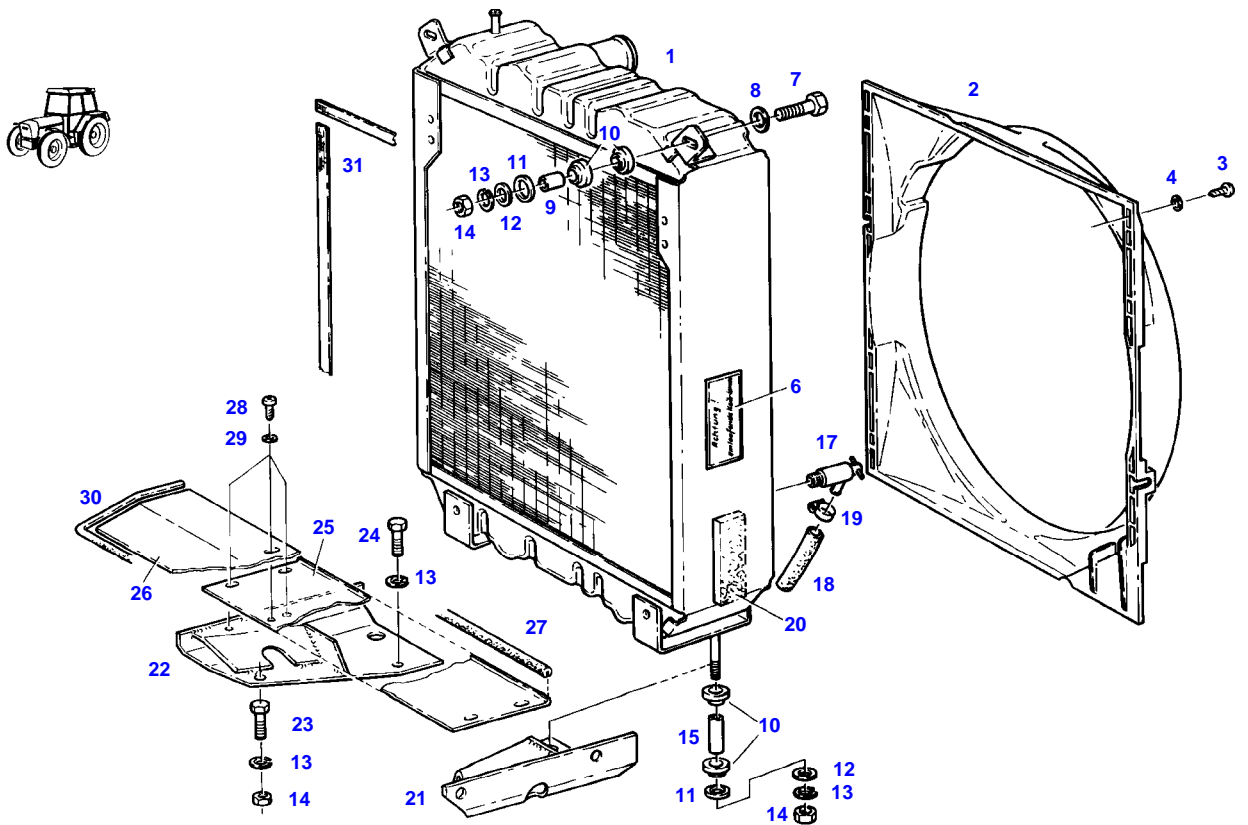


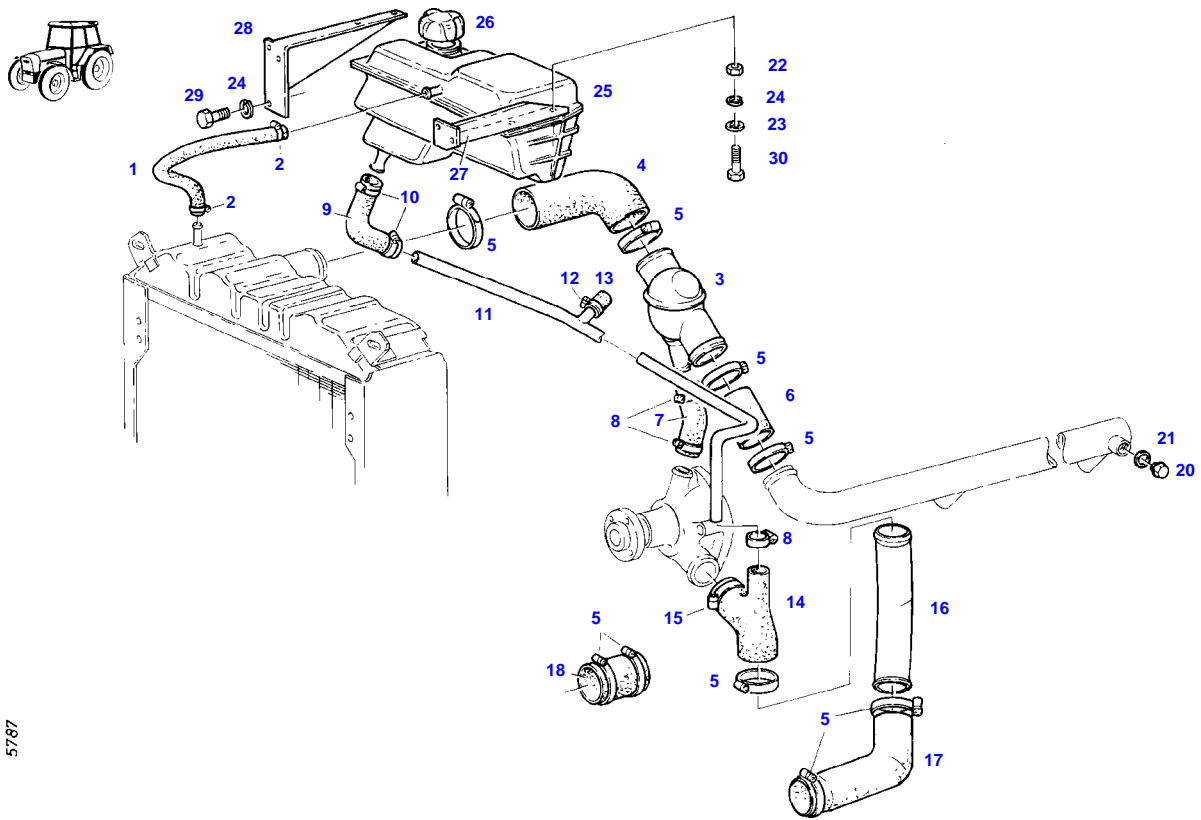
Page Number	Page Title	Page Reference
01-000-TOC	ENGINE, FUEL AND EXHAUST SYSTEM	01-000-TOC
02-000-TOC	AXLES	02-000-TOC
03-000-TOC	STEERING SYSTEM	03-000-TOC
04-000-TOC	DRIVE TRAIN SYSTEM	04-000-TOC
05-000-TOC	COMPRESSED AIR SYSTEM	05-000-TOC
06-000-TOC	HYDRAULIC SYSTEM	06-000-TOC
07-000-TOC	ELECTRICAL SYSTEM	07-000-TOC
08-000-TOC	CAB	08-000-TOC
09-000-TOC	AIR CONDITIONING AND HEATING SYSTEM	09-000-TOC
10-000-TOC	CHASSIS	10-000-TOC
11-000-TOC	WHEELS	11-000-TOC
12-000-TOC	IMPLEMENT LIFT SYSTEM FRONT	12-000-TOC
13-000-TOC	IMPLEMENT LIFT SYSTEM REAR	13-000-TOC
14-000-TOC	FRONT/REAR LOADERS	14-000-TOC
15-000-TOC	ACCESSORIES	15-000-TOC

FARMER 310 (192/02001-03400)
4581



Item	Part Number	Qty	Description Comments	Technical Specification
RANGE OF TEMPERATURE 2 WITH AIR BRAKE SUPPLY EQUIPEMENT				
1	72348773	1	RADIATOR	
2	72396340	1	FAN COVER	
3	72315818	8	SCREW	DIN7976-ST4,2X25-C-A3L
4	72311817	8	DISC	DIN9021-4,3-140HV-A3L
6	72386100	2	WARNING SIGN D	
	72388085	2	WARNING SIGN GB	
	72388086	2	WARNING SIGN F	
	72388087	2	WARNING SIGN I	
	72388088	2	WARNING SIGN E	
7	72315663	2	HEXAGONAL HEAD BOLT	DIN 933 M8X40-8.8A3L
8	72311788	2	DISC	DIN 125-8,4-ST.A3L
9	72310718	2	BUSH	
10	72312479	8	UNIVERSAL SPOUT	
11	72311793	4	DISC	DIN 125-17-ST.A3L
12	72311824	4	DISC	DIN9021-8,4-140HV-A3L
13	72315053	8	SPLIT WASHER	FWN 65208-8-A3L
14	72313268	6	NUT	DIN 934 M8-8A3L
15	72396348	2	BUSH	
17	72378063	1	RELIEF VALVE	DIN71401-CM14X1,5KEG
18	72389310	1	HOSE	
19	72438345	1	HOSE CLIP	
20	72450582	1	SEALING STRIP 2X 120 MM CUT TO LENGTH	L=10M
21	72357349	1	BRACKET	
22	72357350	1	BRACKET	
23	72315665	2	HEXAGONAL HEAD BOLT	DIN 933 M8X45-8.8A3L
24	72315657	2	HEXAGONAL HEAD BOLT	DIN 933 M8 X 30-8.8A3L
25	72396346	1	COVER PLATE	
26	72396302	1	SPLASH PANEL	
27	72450971	1	SHAPED CORD 1X 510 MM CUT TO LENGTH	L=1000 FWN 63040 C02
28	72315820	6	SCREW	DIN7976-ST6,3X13-C-A3L
29	72311822	6	DISC	DIN9021-6,4-140HV-A3L
30	72450971	1	SHAPED CORD 1X 735 MM CUT TO LENGTH	L=1000 FWN 63040 C02
31	72450581	1	SEALING STRIP 2X 510 MM 2X 480 MM 1X 515 MM CUT TO LENGTH	L=20M

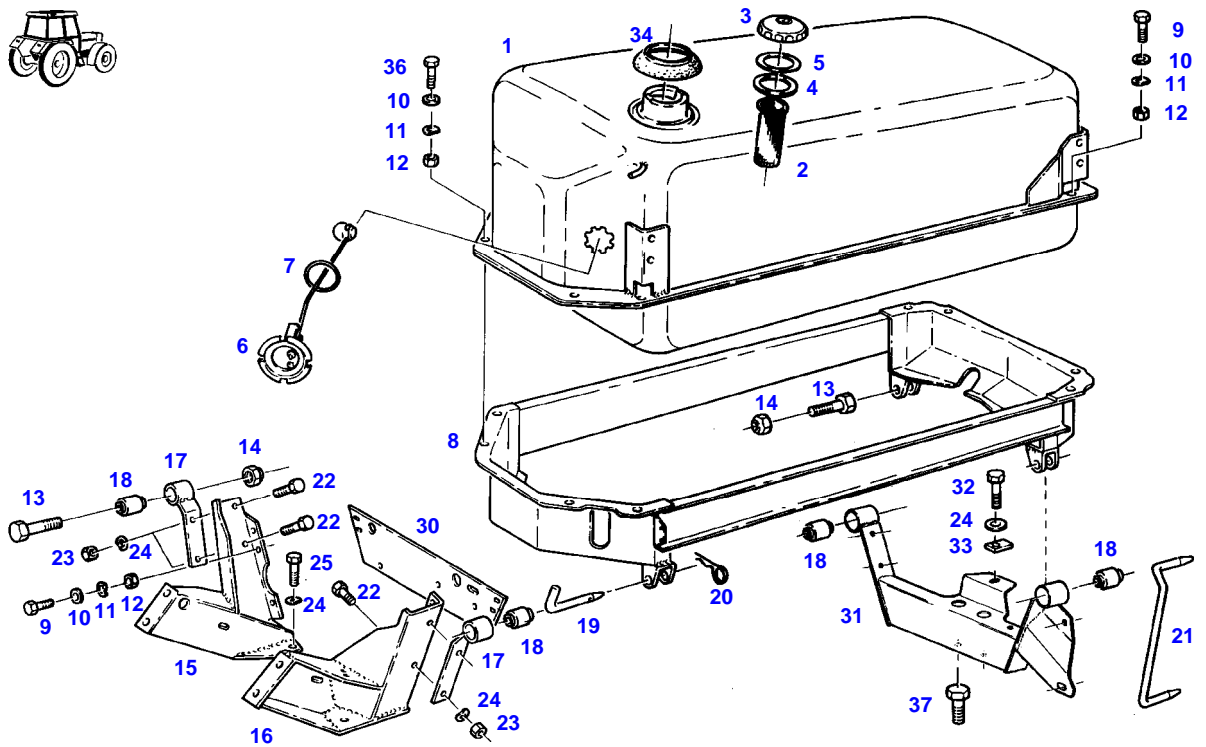
FARMER 310 (192/02001-03400)
5787



5787

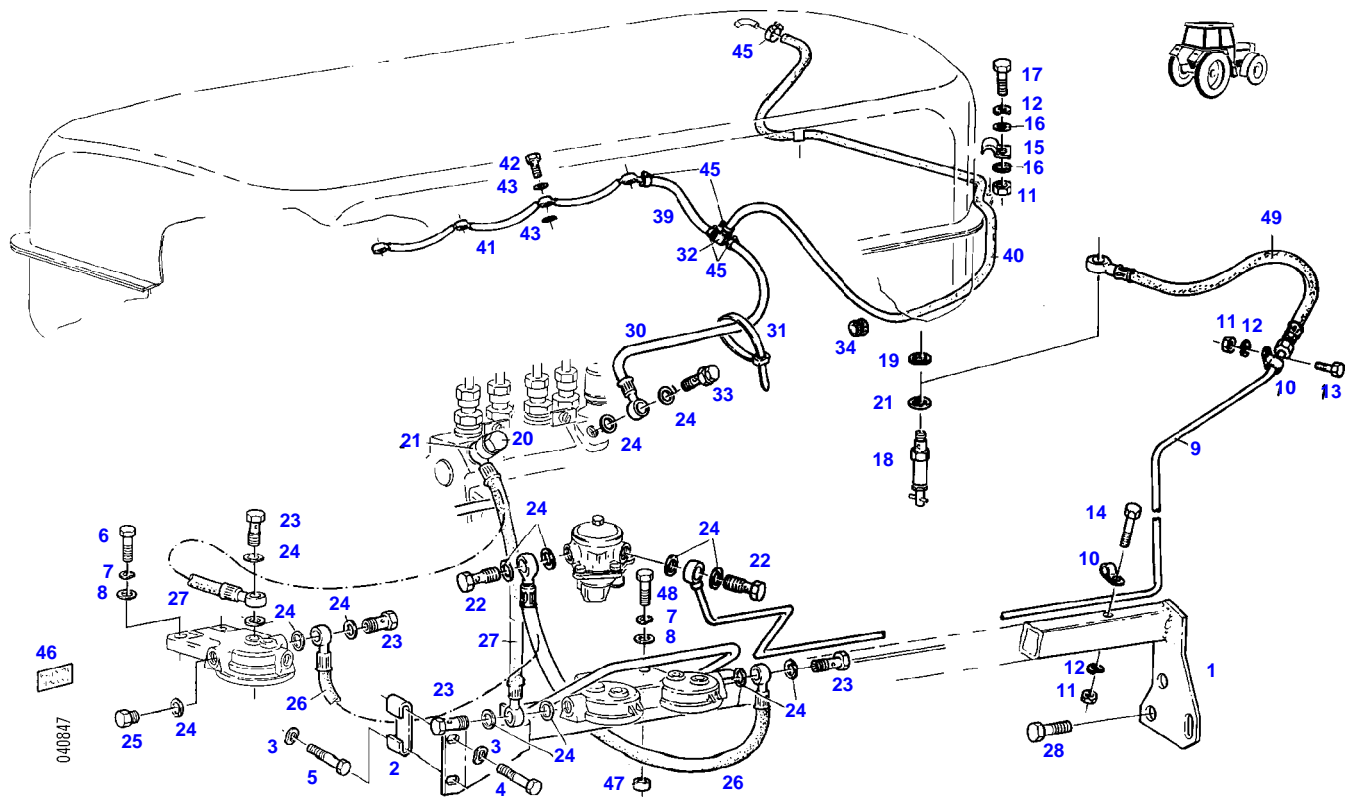
Item	Part Number	Qty	Description Comments	Technical Specification
1	72622024	1	PRESSURE HOSE 300 MM CUT TO LENGTH	L=0,50M 8X3,5-FWN65911
2	72438345	2	HOSE CLIP	
3	72456610	1	THERMOSTAT	
	72343978	1	THERMOSTAT 85 C	
4	72396343	1	RUBBER ARCH	
5	72311163	7	HOSE CLIP	
6	72450417	1	HOSE 1X 60MM CUT TO LENGTH	L=100 DIN73411-45X5 R
7	72396344	1	RUBBER ARCH	
8	72311167	3	HOSE CLIP	
9	72396345	1	RUBBER ARCH	
10	72311166	2	HOSE CLIP	
11	72357352	1	PIPE	
12	72311166	1	HOSE CLIP	
13	72404925	1	CAP	
14	72396342	1	RUBBER ARCH	
15	72311162	1	HOSE CLIP	
16	72396356	1	SUCTION PIPE	
17	72396357	1	RUBBER ARCH	
18	72450417	1	HOSE 1X 60MM CUT TO LENGTH --> 192/2169	L=100 DIN73411-45X5 R
20	72315802	1	SCREW	DIN 7604 AM22X1,5-ST
21	72315101	2	SEALING WASHER	DIN 7603 A22X27-CU
22	72315821	4	SCREW	DIN7976-ST6,3X19-C-A3L
23	72311822	4	DISC	DIN9021-6,4-140HV-A3L
24	72315052	2	SPLIT WASHER	FWN 65208-6-A3L
25	72316897	1	EXPANSION TANK <>	
	72409370	1	CAP	
	72438345	1	HOSE CLIP	
26	72348672	1	COLLER LOCKING	
27	72395909	1	RETAINER	
28	72395908	1	RETAINER	
29	72315629	2	HEXAGONAL HEAD BOLT	DIN 933 M6 X 12-8.8A3L

FARMER 310 (192/02001-03400)
5265



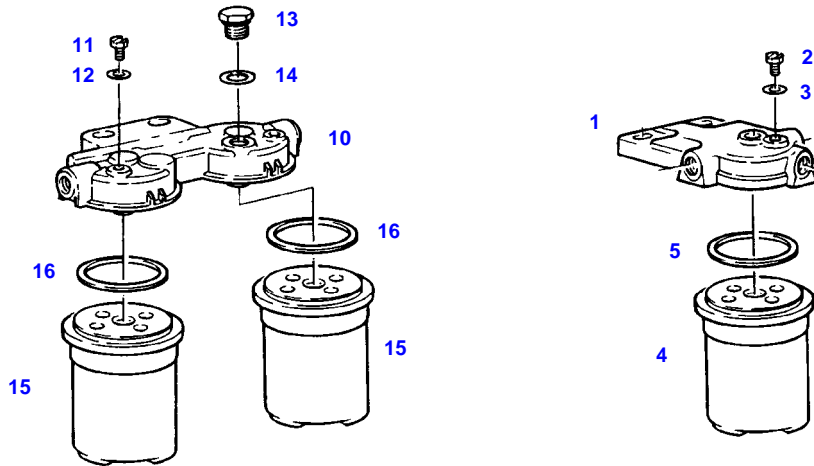
Item	Part Number	Qty	Description Comments	Technical Specification
1	72349994	1	FUEL TANK <>	
	72376017	2	SEALING WASHER	DIN 7603-A5X7,5-CU
	72376018	10	SEALING WASHER	DIN 7603 A5X9-VF
	72409022	2	FLANGE	
	72376132	2	SEALING WASHER	
	72315619	10	HEXAGONAL HEAD BOLT	DIN 933 M5X16-8.8A3L
2	72433112	1	STRAINER	60X100-MS
3	72380143	1	FUEL CAP KOEHLER ><3+4	M.BELUEF
	72348297	1	FUEL CAP LOCKABLE BLAU ><3-5	
4	72330725	1	SEAL BLAU	
	72312304	1	RUBBER SEAL KOEHLER	
5	72330726	1	SEAL	
6	72613427	1	FUEL LEVEL SENSOR ><6-7	
7	72315169	1	SEALING WASHER	
8	72357106	1	TANK FRAME	
9	72315626	9	HEXAGONAL HEAD BOLT	DIN 933-M6 X 16-8.8-A3L
10	72311822	20	DISC	DIN9021-6,4-140HV-A3L
11	72317120	15	SPRING WASHER	DIN 137 B6-MECH.VZK
12	72313266	15	NUT	DIN 934 M6-8A3L
13	72315719	2	HEXAGONAL HEAD BOLT	DIN 933 M12X60-8.8A3L
14	72313325	2	NUT	DIN 980-VM12-8-A3L
15	72355440	1	BRACKET	
16	72355441	1	BRACKET	
17	72357100	2	BEARING	
18	72310644	4	RUBBER BUSHING	
19	72404932	2	BEARING PIN	
20	72311183	2	HAIR COTTER PIN	DIN 11024-4-A3L
21	72393681	1	BEARING PIN	
22	72315657	4	HEXAGONAL HEAD BOLT	DIN 933 M8 X 30-8.8A3L
23	72313268	5	NUT	DIN 934 M8-8A3L
24	72317121	11	SPRING WASHER	DIN 137 B8-MECH.VZK
25	72315642	6	HEXAGONAL HEAD BOLT	DIN 933 M8 X 16-8.8A3L
30	72395911	1	SHEET METAL	
31	72357090	1	CROSSMEMBER	
32	72315663	1	HEXAGONAL HEAD BOLT	DIN 933 M8X40-8.8A3L
33	72400066	1	PLATE LINK	
34	72397269	1	SLEEVE	
36	72315631	2	HEXAGONAL HEAD BOLT	DIN 933 M6 X 20-8.8A3L
37	72315675	2	HEXAGONAL HEAD BOLT	DIN 933 M10X16-8.8A3L

FARMER 310 (192/02001-03400)
40847



Item	Part Number	Qty	Description Comments	Technical Specification
1	72356743	1	RETAINER	
2	72399913	1	HOLDER	
3	72317122	2	SPRING WASHER	DIN 137 B10-MECH.VZK
4	72315689	1	HEXAGONAL HEAD BOLT	DIN 933 M10X35-8.8A3L
5	72315691	1	HEXAGONAL HEAD BOLT	DIN 933 M10X40-8.8A3L
6	72315657	2	HEXAGONAL HEAD BOLT	DIN 933 M8 X 30-8.8A3L
7	72317121	2	SPRING WASHER	DIN 137 B8-MECH.VZK
8	72311824	2	DISC	DIN9021-8,4-140HV-A3L
9	72356707	1	TUBING	
10	72311241	2	PIPE CLAMP	
11	72313266	2	NUT	DIN 934 M6-8A3L
12	72317120	2	SPRING WASHER	DIN 137 B6-MECH.VZK
13	72315626	1	HEXAGONAL HEAD BOLT	DIN 933-M6 X 16-8.8-A3L
14	72315637	1	HEXAGONAL HEAD BOLT	DIN 933 M6X45-8.8A3L
15	72398941	2	FASTENING COLLAR	
16	72311822	2	DISC	DIN9021-6,4-140HV-A3L
17	72315631	2	HEXAGONAL HEAD BOLT	DIN 933 M6 X 20-8.8A3L
18	72380159	1	FUEL SHUT-OFF VALVE	
19	72315093	1	SEALING WASHER	DIN 7603 A12X18-CU
20	72310187	1	DOUBLE BOLT	
21	72315095	2	SEALING WASHER	DIN 7603 A14X20-CU
22	72315808	2	BANJO BOLT	DIN 7643-10-3-A3L
23	72315808	2	BANJO BOLT	DIN 7643-10-3-A3L
24	72315095	14	SEALING WASHER	DIN 7603 A14X20-CU
25	72315799	2	PLUG	DIN 7604 AM14X1,5-A3L
26	72356760	1	FUEL LINE	
27	72355537	1	FUEL LINE	
28	72374490	2	HEXAGONAL HEAD BOLT	DIN 933 M14X20-8.8
	72374493	2	HEXAGONAL HEAD BOLT	DIN 933 M14X30-8.8
30	72356761	1	FUEL LINE --> 192/2201 <> <>	
	72438345	1	HOSE CLIP	
	72316916	3	CABLE STRAP	FWN 66650 B175X4-SW
	72380023	1	TEE FITTING	
31	72316916	2	CABLE STRAP	FWN 66650 B175X4-SW
32	72380023	1	TEE FITTING	
33	72380268	1	BLEED AND DRAIN VALVE	
34	72379152	1	CABLE BUSHING	HV1305
39	72450301	1	PRESSURE HOSE 260 MM CUT TO LENGTH	L=1000
40	72435830	1	PRESSURE HOSE 1100 MM CUT TO LENGTH	L=2100
41			SEE FUEL LININGS	
42	72315809	4	BANJO BOLT	DIN 7643-4-5-A3L
	72342985	4	SCREW ENGINE B	
43	72315086	8	SEALING WASHER	DIN 7603 A8X11,5-CU
	72315084	8	SEALING WASHER ENGINE B	DIN 7603 A6X10-CU
45	72438345	5	HOSE CLIP	
46	72393682	1	MARKING PLATE ARABIAN-ENGLISH	
47	72311848	2	DISC	
48	72315660	2	HEXAGONAL HEAD BOLT	DIN 933 M8X35-8.8A3L
49	72357312	1	HOSE LINE	

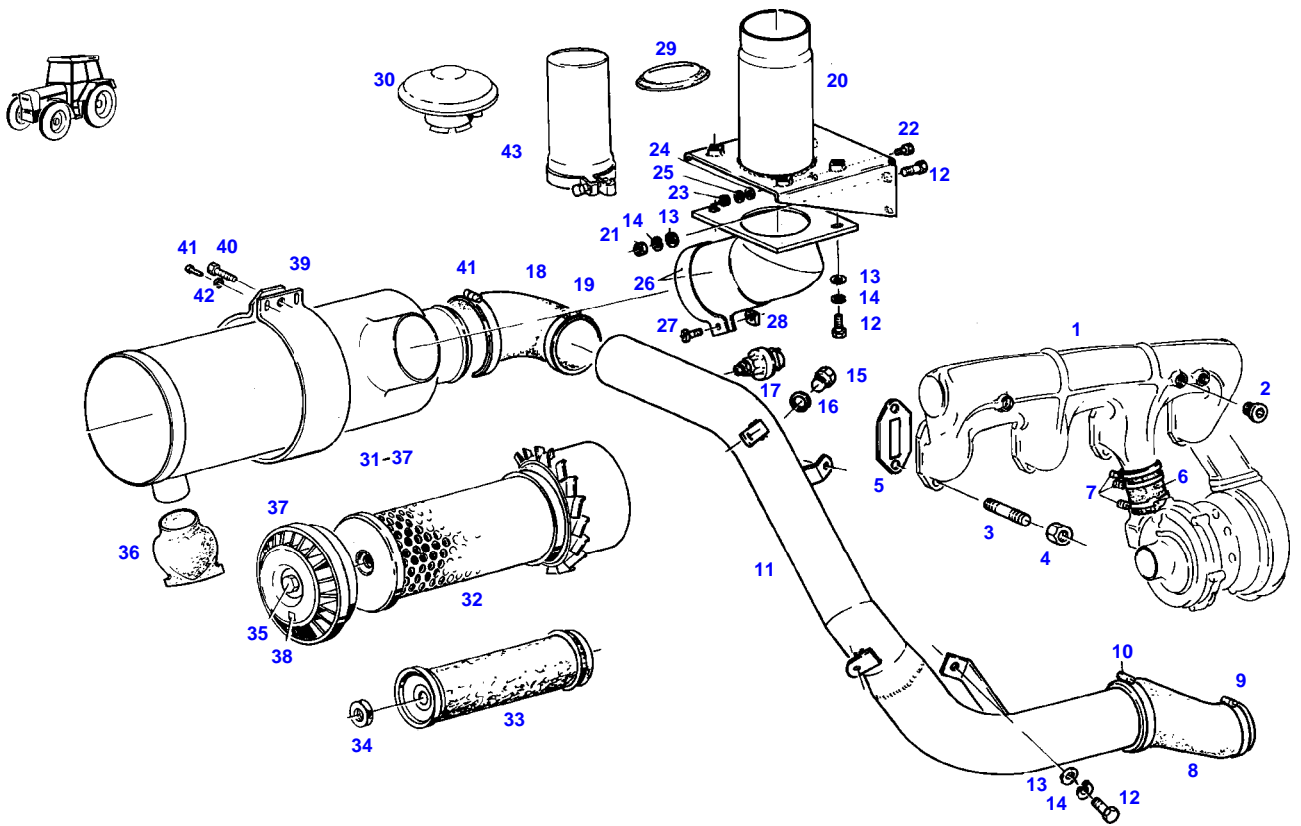
FARMER 310 (192/02001-03400)
4952



4952

Item	Part Number	Qty	Description Comments	Technical Specification
1	72615599	1	FILTER LID ><2,3	
2	72323290	1	BLEED SCREW	
3	72315084	1	SEALING WASHER	DIN 7603 A6X10-CU
4	72416928	1	FILTER BOX ><5	
5	72314995	1	RUBBER RING PARALLEL-FILTER	
10	72380173	1	PARALLEL FILTER BOSCH ><11-16 <-- X810.190.166.000 1X <>	
	72416928	2	FILTER BOX	
	72451307	1	COVER KNECHT ><11,12 <>	PARALLELFILT.
	72416928	2	FILTER BOX	
11	72323290	2	BLEED SCREW BOSCH	
	72314699	2	BLEED SCREW KNECHT	
12	72315084	2	SEALING WASHER BOSCH	DIN 7603 A6X10-CU
	72315086	2	SEALING WASHER KNECHT	DIN 7603 A8X11,5-CU
13	72326250	1	SCREW BOSCH	
14	72315095	1	SEALING WASHER BOSCH	DIN 7603 A14X20-CU
15	72416928	2	FILTER BOX ><16	
16	72314995	2	RUBBER RING	

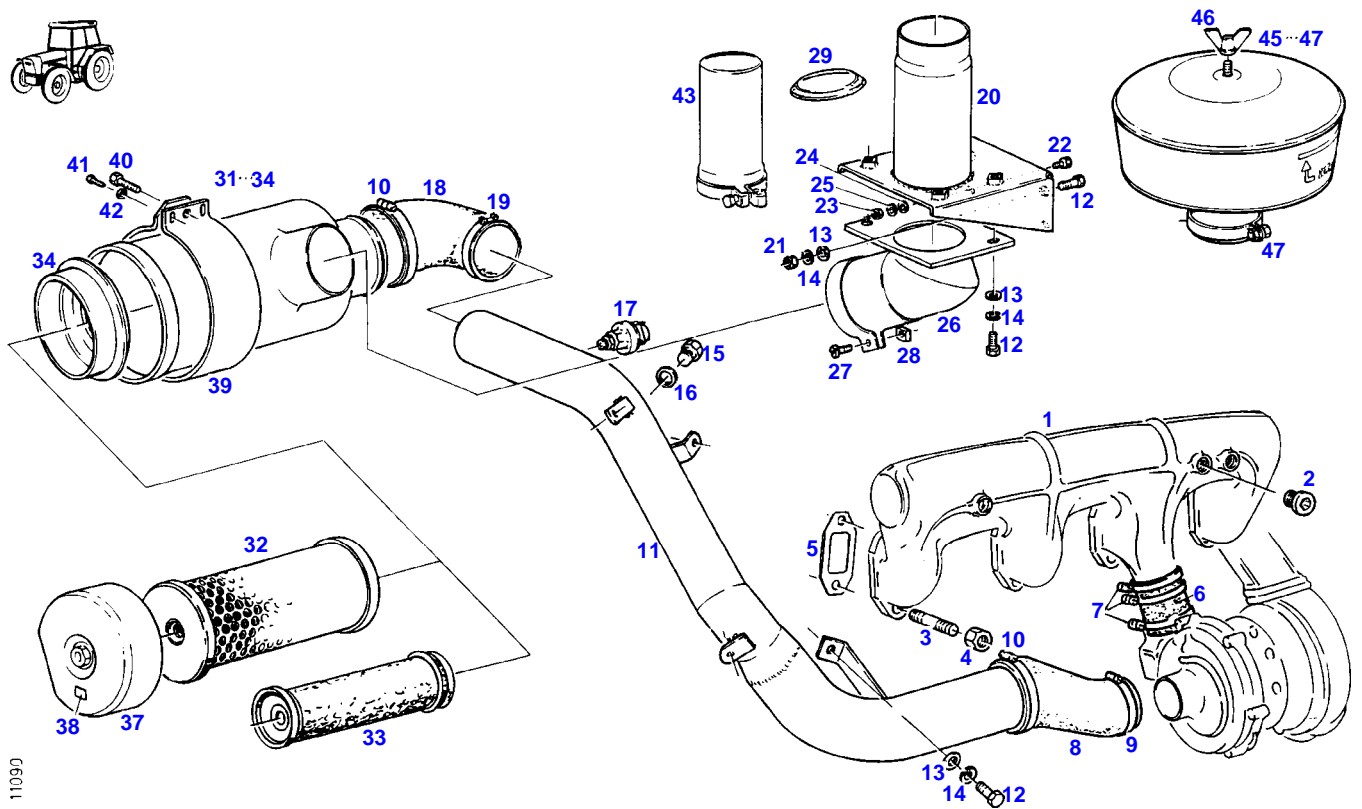
FARMER 310 (192/02001-03400)
5273



5273

Item	Part Number	Qty	Description Comments	Technical Specification
PICLON				
1	72395914	1	INTAKE MANIFOLD	
2	72315433	1	SCREW	DIN 906 M14X1,5-ST
3	72373922	8	STUD BOLT	DIN 835-M10X25-8.8
4	72373015	8	NUT	DIN70615-M10-8-A3B
5	72332145	4	MOLDED SEAL	
6	72332526	1	HOSE PIECE	
7	72311163	3	HOSE CLIP	
8	72395913	1	REDUCER	
9	72311163	1	HOSE CLIP	
10	72311171	2	HOSE CLIP	
11	72357096	1	INTAKE MANIFOLD	
12	72315650	5	HEXAGONAL HEAD BOLT	DIN 933 M8 X 20-8.8A3L
13	72311788	6	DISC	DIN 125-8,4-ST.A3L
14	72315053	5	SPLIT WASHER	FWN 65208-8-A3L
15	72315802	1	SCREW	DIN 7604 AM22X1,5-ST
16	72315101	1	SEALING WASHER	DIN 7603 A22X27-CU
17	72379892	1	MAINTENANCE SWITCH	
18	72395912	1	RUBBER ARCH	
19	72311170	1	HOSE CLIP	
20	72357730	1	CONSOLE	
21	72313268	2	NUT	DIN 934 M8-8A3L
22	72315626	1	HEXAGONAL HEAD BOLT	DIN 933-M6 X 16-8.8-A3L
23	72313266	1	NUT	DIN 934 M6-8A3L
24	72311787	2	DISC	DIN 125-6,4-ST.A3L
25	72315052	1	SPLIT WASHER	FWN 65208-6-A3L
26	72357729	1	PIPE BEND	
27	72374982	1	OVAL HEAD SCREW	DIN 7985 M6X25-4.8A3L
28	72372783	1	SQUARE NUT	DIN 557 M6-5 A3L
29	72396307	1	SEALING RING	
30	72348784	1	RAIN CAP	
31	72348775	1	AIR FILTER MANN + HUMMEL ><31-37	
	72348775	1	AIR FILTER KNECHT ><31-37	
32	72332577	1	MICRO-TOP CARTRIDGE	
33	72332126	1	SAFETY CARTRIDGE	
34	72372827	1	NUT	DIN 934 M16X1,5-10A3L
	72372763	1	MANN + HUMMEL NUT KNECHT	DIN 439 BM16-04A3L
35	72339030	1	COLLAR NUT MANN + HUMMEL	
	72332977	1	FASTENING NUT KNECHT	
36	72332513	1	DUST DISCHARGE VALVE MANN + HUMMEL	
	72332975	1	VALVE KNECHT	
37	72332518	1	COVER MANN + HUMMEL	
	72332976	1	COVER KNECHT <-- G199.200.090.010	
38	72395907	1	ABSORPTION INDICATOR	
39	72396306	1	CLAMP	
40	72315634	1	HEXAGONAL HEAD BOLT	DIN 933 M6X30-8.8A3L
41	72315814	2	SCREW	DIN7976-ST4,8X16-F-A3L
42	72311785	2	DISC	DIN 125-5,3-ST.A3L
43	72348666	1	CONNECTING PIPE	

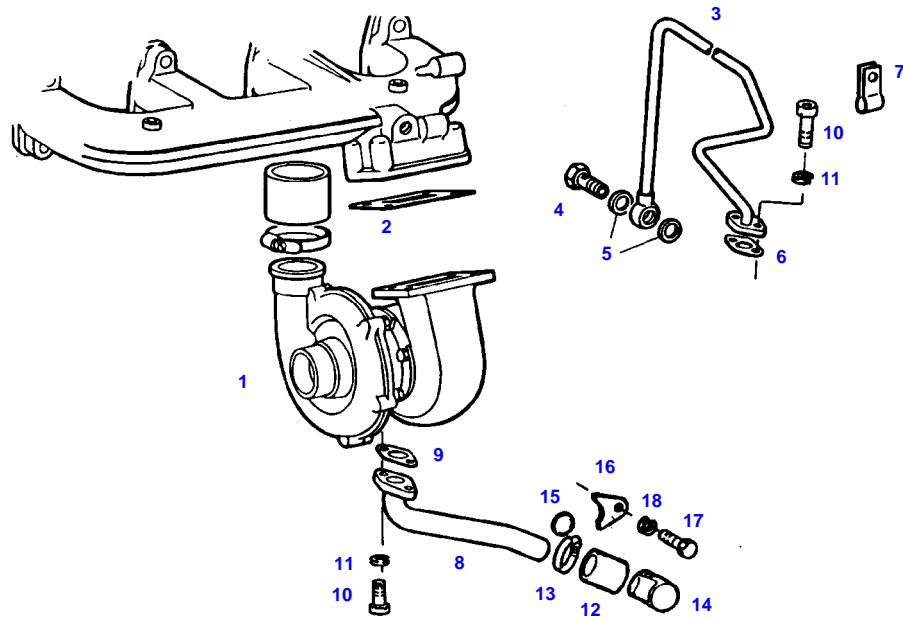
FARMER 310 (192/02001-03400)
11090



11090

Item	Part Number	Qty	Description Comments	Technical Specification
PICO				
1	72395914	1	INTAKE MANIFOLD	
2	72315433	1	SCREW	DIN 906 M14X1,5-ST
3	72373922	8	STUD BOLT	DIN 835-M10X25-8.8
4	72373015	8	NUT	DIN70615-M10-8-A3B
5	72332145	4	MOLDED SEAL	
6	72332526	1	HOSE PIECE	
7	72311163	3	HOSE CLIP	
8	72395913	1	REDUCER	
9	72311163	1	HOSE CLIP	
10	72311171	2	HOSE CLIP	
11	72357096	1	INTAKE MANIFOLD	
12	72315650	5	HEXAGONAL HEAD BOLT	DIN 933 M8 X 20-8.8A3L
13	72311788	7	DISC	DIN 125-8,4-ST.A3L
14	72315053	5	SPLIT WASHER	FWN 65208-8-A3L
15	72315802	1	SCREW	DIN 7604 AM22X1,5-ST
16	72315101	1	SEALING WASHER	DIN 7603 A22X27-CU
17	72379892	1	MAINTENANCE SWITCH	
18	72395912	1	RUBBER ARCH	
19	72311170	1	HOSE CLIP	
20	72357730	1	CONSOLE	
21	72313268	2	NUT	DIN 934 M8-8A3L
22	72315626	1	HEXAGONAL HEAD BOLT	DIN 933-M6 X 16-8.8-A3L
23	72313266	1	NUT	DIN 934 M6-8A3L
24	72311787	2	DISC	DIN 125-6,4-ST.A3L
25	72315052	1	SPLIT WASHER	FWN 65208-6-A3L
26	72357729	1	PIPE BEND	
27	72374982	1	OVAL HEAD SCREW	DIN 7985 M6X25-4.8A3L
28	72372783	1	SQUARE NUT	DIN 557 M6-5 A3L
29	72396307	1	SEALING RING	
31	72348780	1	AIR FILTER	
			><31-34	
32	72332577	1	MICRO-TOP CARTRIDGE	
33	72332126	1	SAFETY CARTRIDGE	
34	72332999	1	GUIDE RING	
37			NO SPARE PART	
38	72395907	1	ABSORPTION INDICATOR	
39	72396306	1	CLAMP	
40	72315634	1	HEXAGONAL HEAD BOLT	DIN 933 M6X30-8.8A3L
41	72315814	2	SCREW	DIN7976-ST4,8X16-F-A3L
42	72311785	2	DISC	DIN 125-5,3-ST.A3L
43	72348666	1	CONNECTING PIPE	
45	72348552	1	PRE-CLEANER	
			><45-47	
	72311582	1	DUST CUP	
46	72313238	1	WING NUT	
47	72332464	1	HOSE CLIP	

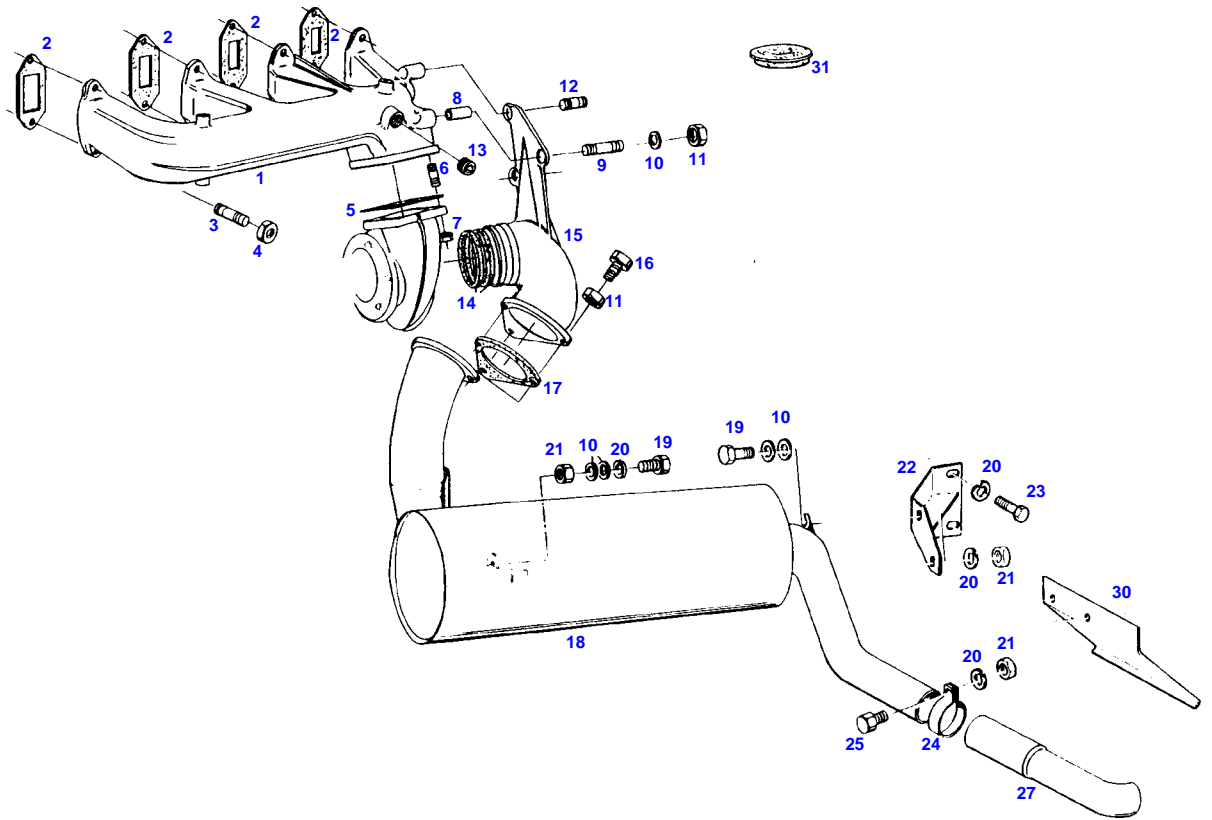
FARMER 310 (192/02001-03400)
5274



5274

Item	Part Number	Qty	Description Comments	Technical Specification
1	72332433	1	TURBOCHARGER	
	72332434	1	SPARE PARTS KIT	
2			SEE EXHAUST	
3	72332435	1	LUBE OIL LINE	
4	72374956	1	BANJO BOLT	DIN7623/3.70-A10-6.8
5	72315098	2	SEALING WASHER	DIN 7603 A16X22-CU
6	72332436	1	OVAL GASKET	
7	72332437	1	PIPE CLAMP	
8	72332438	1	LUBE OIL LINE	
9	72332161	1	OVAL GASKET	
10	72374020	2	SOCKET HEAD BOLT	DIN 912 M8X20-10.9
	72315474	2	SOCKET HEAD BOLT	
11	72315053	4	SPLIT WASHER	FWN 65208-8-A3L
12	72332160	1	HOSE PIECE	
13	72311167	2	HOSE CLIP	
14	72343888	1	MANIFOLD	
15	72343889	1	SEAL	
16	72343890	1	RETAINING SHEET METAL	
17	72315489	1	SOCKET HEAD BOLT	DIN 912-M8 X 16-8.8-A3L
18	72315053	1	SPLIT WASHER	FWN 65208-8-A3L

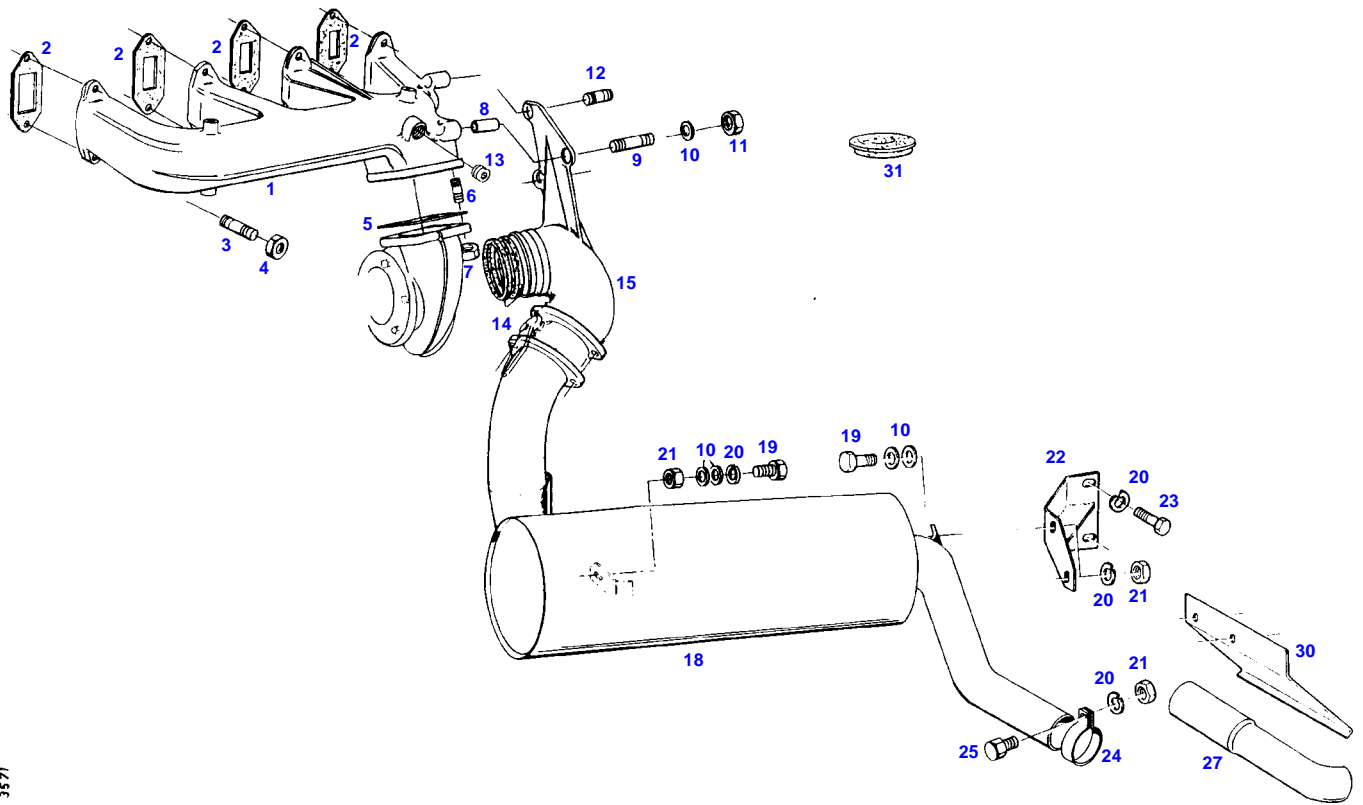
FARMER 310 (192/02001-03400)
3572



3572

Item	Part Number	Qty	Description Comments	Technical Specification
1	72332443	1	EXHAUST PIPE	
2	72332145	4	MOLDED SEAL	
3	72374647	8	STUD BOLT	DIN 939-M10X40-8.8
4	72373015	8	NUT	DIN70615-M10-8-A3B
5	72332442	1	MOLDED SEAL	
6	72313770	4	STUD BOLT	FWN64891-M8X20-8.8
7	72313269	4	NUT	DIN 934 M8-8C2A
8	72395427	1	SPACER TUBE	
9	72313775	1	STUD BOLT	DIN 939 M8X70-8.8A3L
10	72311788	11	DISC	DIN 125-8,4-ST.A3L
11	72313269	6	NUT	DIN 934 M8-8C2A
12	72313770	2	STUD BOLT	FWN64891-M8X20-8.8
13	72373954	1	SCREW	DIN 906-R3/8-ST
14	72377180	2	PISTON RING	ISO6622-1 R-70X2-MC12
15	72395426	1	MANIFOLD	
16	72315653	3	HEXAGONAL HEAD BOLT	DIN 933 M8 X 25-8.8A3L
17	72407298	1	MOLDED SEAL	
18	72357115	1	EXHAUST MUFFLER	
			<>	
	72315534	3	HEXAGONAL HEAD BOLT	DIN 931 M8 X 70-8.8
	72407298	2	MOLDED SEAL	
	72395941	1	INTERMEDIATE PIECE	
19	72315646	3	HEXAGONAL HEAD BOLT	DIN 933 M8X18-8.8A3L
20	72315053	6	SPLIT WASHER	FWN 65208-8-A3L
21	72313268	4	NUT	DIN 934 M8-8A3L
22	72357075	1	GUSSET PLATE	
23	72315642	2	HEXAGONAL HEAD BOLT	DIN 933 M8 X 16-8.8A3L
24	72373437	1	PIPE CLAMP	DIN71555-63,5 EDELSTAHL
25	72315657	1	HEXAGONAL HEAD BOLT	DIN 933 M8 X 30-8.8A3L
27	72393695	1	EXHAUST TAILPIPE	
30	72395889	1	DEFLECTOR	
31	72395945	1	COVER	

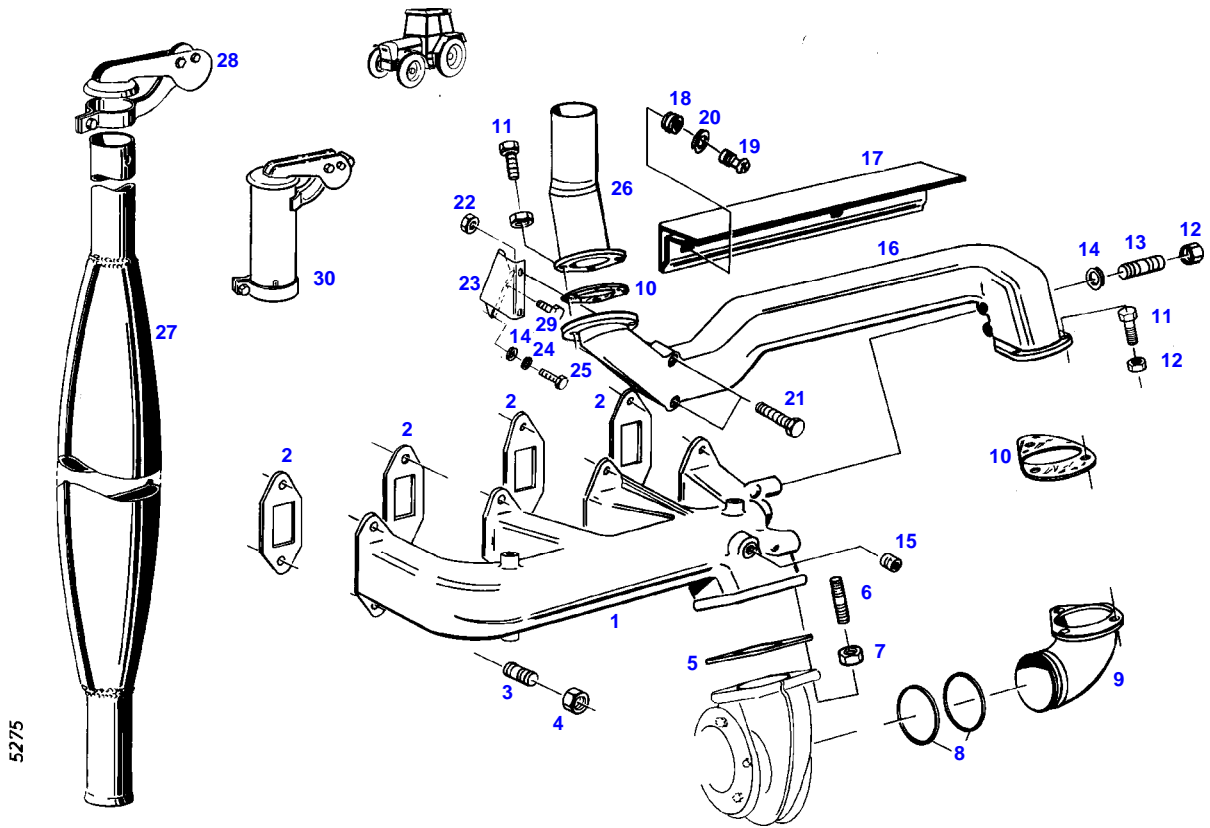
FARMER 310 (192/02001-03400)
3571



3571

Item	Part Number	Qty	Description Comments	Technical Specification
ENGINE BRAKE				
1	72332443	1	EXHAUST PIPE	
2	72332145	4	MOLDED SEAL	
3	72374647	8	STUD BOLT	DIN 939-M10X40-8.8
4	72373015	8	NUT	DIN70615-M10-8-A3B
5	72332442	1	MOLDED SEAL	
6	72313770	4	STUD BOLT	FWN64891-M8X20-8.8
7	72313269	4	NUT	DIN 934 M8-8C2A
8	72395427	1	SPACER TUBE	
9	72313775	1	STUD BOLT	DIN 939 M8X70-8.8A3L
10	72311788	11	DISC	DIN 125-8,4-ST.A3L
11	72313269	3	NUT	DIN 934 M8-8C2A
12	72313770	2	STUD BOLT	FWN64891-M8X20-8.8
13	72373954	1	SCREW	DIN 906-R3/8-ST
14	72377180	2	PISTON RING	ISO6622-1 R-70X2-MC12
15	72395426	1	MANIFOLD	
18	72357115	1	EXHAUST MUFFLER	
19	72315646	3	HEXAGONAL HEAD BOLT	DIN 933 M8X18-8.8A3L
20	72315053	6	SPLIT WASHER	FWN 65208-8-A3L
21	72313268	4	NUT	DIN 934 M8-8A3L
22	72357075	1	GUSSET PLATE	
23	72315642	2	HEXAGONAL HEAD BOLT	DIN 933 M8 X 16-8.8A3L
24	72373437	1	PIPE CLAMP	DIN71555-63,5 EDELSTAHL
25	72315657	1	HEXAGONAL HEAD BOLT	DIN 933 M8 X 30-8.8A3L
27	72393695	1	EXHAUST TAILPIPE	
30	72395889	1	DEFLECTOR	
31	72395945	1	COVER	

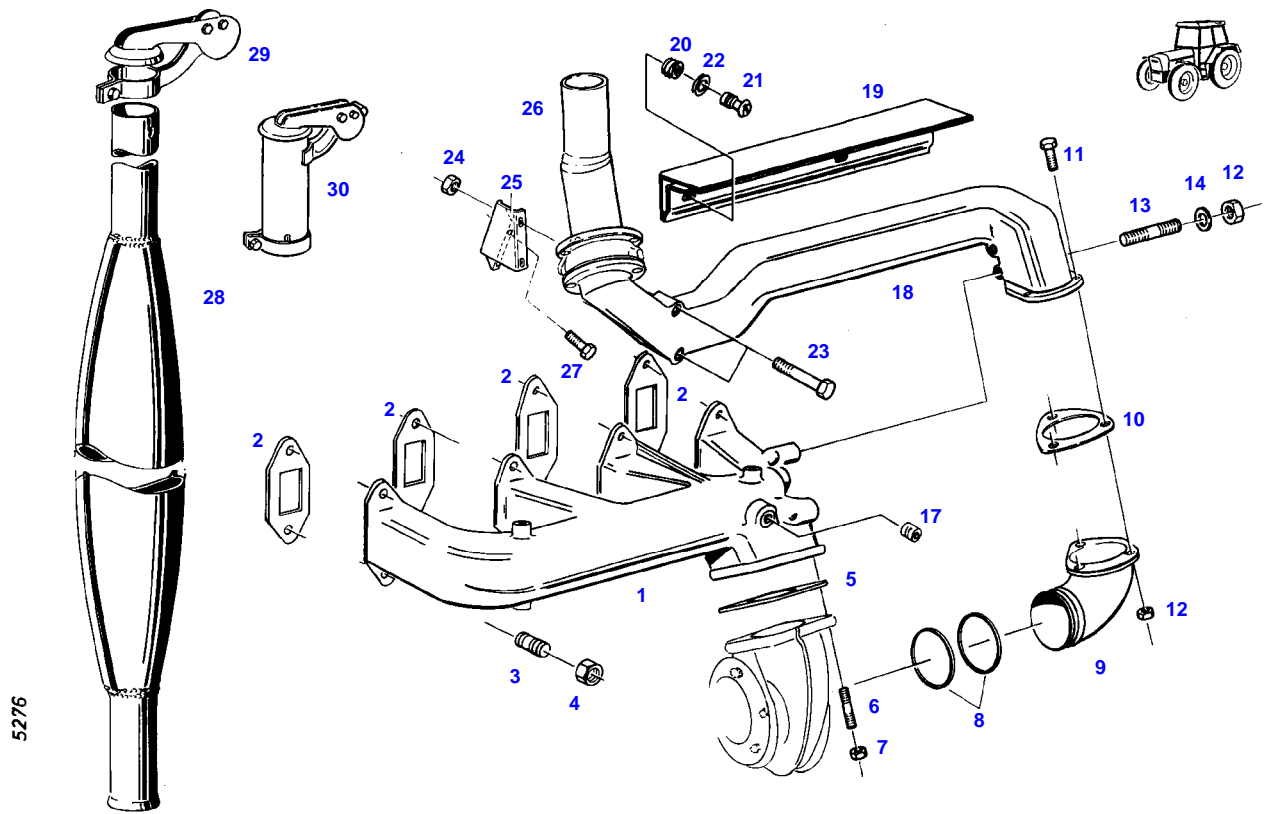
FARMER 310 (192/02001-03400)
5275



5275

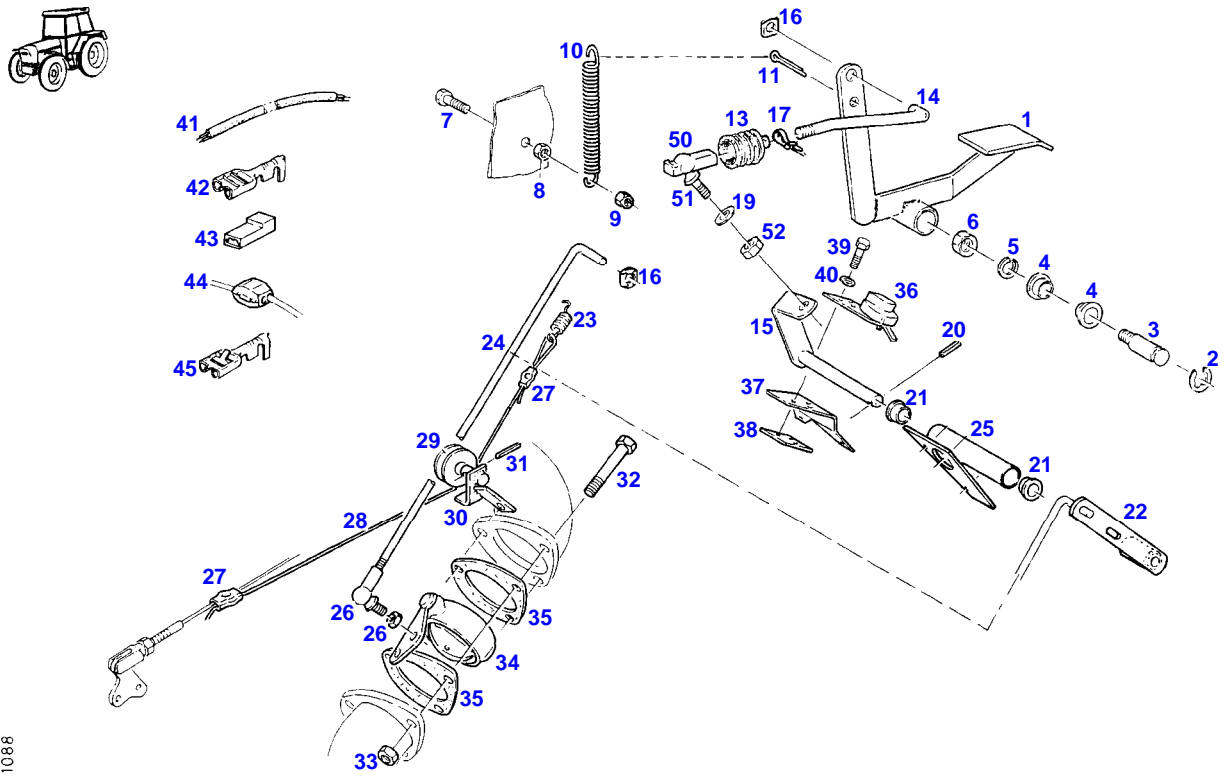
Item	Part Number	Qty	Description Comments	Technical Specification
1	72332443	1	EXHAUST PIPE	
2	72332145	4	MOLDED SEAL	
3	72313777	8	STUD BOLT	DIN 939 M10X35-8.8
4	72373015	8	NUT	DIN70615-M10-8-A3B
5	72332442	1	MOLDED SEAL	
6	72313770	4	STUD BOLT	FWN64891-M8X20-8.8
7	72313269	4	NUT	DIN 934 M8-8C2A
8	72377180	2	PISTON RING	ISO6622-1 R-70X2-MC12
9	72395430	1	BEND	
10	72407298	2	MOLDED SEAL	
11	72315653	6	HEXAGONAL HEAD BOLT	DIN 933 M8 X 25-8.8A3L
12	72313269	8	NUT	DIN 934 M8-8C2A
13	72313775	2	STUD BOLT	DIN 939 M8X70-8.8A3L
14	72311788	3	DISC	DIN 125-8,4-ST.A3L
15	72373954	1	SCREW	DIN 906-R3/8-ST
16	72395429	1	EXHAUST PIPE	
17	72356725	1	SHIELD	
18	72372509	2	THREADED INSERT	M4
19	72315614	2	HEXAGONAL HEAD BOLT	DIN 933-M4X8-8.8-A3L
20	72311817	2	DISC	DIN9021-4,3-140HV-A3L
21	72374183	2	HEXAGONAL HEAD BOLT	DIN 931 M10X75-8.8
22	72313272	2	NUT	DIN 934 M10-8A3L
23	72395431	1	RETAINER	
24			SEE FUEL ASSEMBLY	
25			SEE FUEL ASSEMBLY	
26	72357076	1	PIPE	
27	72356726	1	EXHAUST MUFFLER	
28	72348549	1	EXHAUST WEATHER CAP	
29	72315653	1	HEXAGONAL HEAD BOLT	DIN 933 M8 X 25-8.8A3L
	72313268	1	NUT	DIN 934 M8-8A3L
	72315053	1	SPLIT WASHER	FWN 65208-8-A3L
30	72451055	1	EXHAUST EXTENSION SWEDEN	UP WITH WEATHER CAP

FARMER 310 (192/02001-03400)
5276



Item	Part Number	Qty	Description Comments	Technical Specification
ENGINE BRAKE				
1	72332443	1	EXHAUST PIPE	
2	72332145	4	MOLDED SEAL	
3	72313777	8	STUD BOLT	DIN 939 M10X35-8.8
4	72373015	8	NUT	DIN70615-M10-8-A3B
5	72332442	1	MOLDED SEAL	
6	72313770	4	STUD BOLT	FWN64891-M8X20-8.8
7	72313269	4	NUT	DIN 934 M8-8C2A
8	72377180	2	PISTON RING	ISO6622-1 R-70X2-MC12
9	72395430	1	BEND	
10	72407298	1	MOLDED SEAL	
11	72315653	3	HEXAGONAL HEAD BOLT	DIN 933 M8 X 25-8.8A3L
12	72313269	5	NUT	DIN 934 M8-8C2A
13	72313775	2	STUD BOLT	DIN 939 M8X70-8.8A3L
14	72311788	2	DISC	DIN 125-8,4-ST.A3L
17	72373954	1	SCREW	DIN 906-R3/8-ST
18	72395429	1	EXHAUST PIPE	
19	72356725	1	SHIELD	
20	72372509	2	THREADED INSERT	M4
21	72315614	2	HEXAGONAL HEAD BOLT	DIN 933-M4X8-8.8-A3L
22	72311817	2	DISC	DIN9021-4,3-140HV-A3L
23	72374183	2	HEXAGONAL HEAD BOLT	DIN 931 M10X75-8.8
24	72313272	2	NUT	DIN 934 M10-8A3L
25	72395431	1	RETAINER	
26	72357080	1	PIPE	
27	72315653	1	HEXAGONAL HEAD BOLT	DIN 933 M8 X 25-8.8A3L
	72313268	1	NUT	DIN 934 M8-8A3L
	72315053	1	SPLIT WASHER	FWN 65208-8-A3L
28	72356726	1	EXHAUST MUFFLER	
29	72348549	1	EXHAUST WEATHER CAP	
30	72451055	1	EXHAUST EXTENSION	UP WITH WEATHER CAP

FARMER 310 (192/02001-03400)
11088



11088

Thank you so much for reading.
Please click the “Buy Now!”
button below to download the
complete manual.



After you pay.

You can download the most
perfect and complete manual in
the world immediately.

Our support email:

ebooklibonline@outlook.com