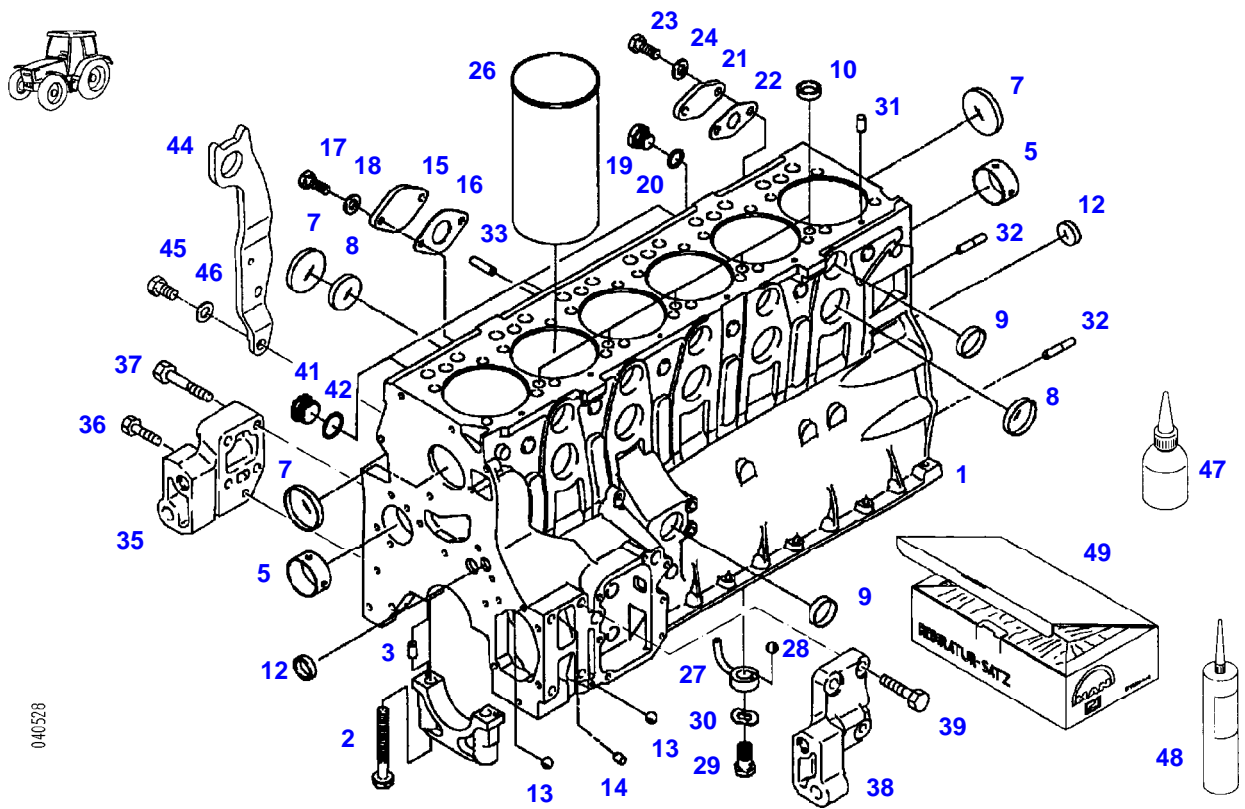


| <b>Page Number</b> | <b>Page Title</b>                   | <b>Page Reference</b> |
|--------------------|-------------------------------------|-----------------------|
| 01-000-TOC         | ENGINE, FUEL AND EXHAUST SYSTEM     | 01-000-TOC            |
| 02-000-TOC         | AXLES                               | 02-000-TOC            |
| 03-000-TOC         | STEERING SYSTEM                     | 03-000-TOC            |
| 04-000-TOC         | DRIVE TRAIN SYSTEM                  | 04-000-TOC            |
| 05-000-TOC         | COMPRESSED AIR SYSTEM               | 05-000-TOC            |
| 06-000-TOC         | HYDRAULIC SYSTEM                    | 06-000-TOC            |
| 07-000-TOC         | ELECTRICAL SYSTEM                   | 07-000-TOC            |
| 08-000-TOC         | CAB                                 | 08-000-TOC            |
| 09-000-TOC         | AIR CONDITIONING AND HEATING SYSTEM | 09-000-TOC            |
| 10-000-TOC         | CHASSIS                             | 10-000-TOC            |
| 11-000-TOC         | WHEELS                              | 11-000-TOC            |
| 12-000-TOC         | IMPLEMENT LIFT SYSTEM FRONT         | 12-000-TOC            |
| 13-000-TOC         | IMPLEMENT LIFT SYSTEM REAR          | 13-000-TOC            |
| 14-000-TOC         | ACCESSORIES                         | 14-000-TOC            |

| Page Number | Page Title                | Page Reference |
|-------------|---------------------------|----------------|
| 01-0001     | CRANKCASE                 | 2020           |
| 01-0002     | PUMP DRIVE                | 2030           |
| 01-0003     | FRONT COVER               | 2040           |
|             | <-- 926/0101 --> 926/0300 |                |
|             | <-- 926/1001 --> 926/2049 |                |
|             | <-- 926/2051              |                |
| 01-0004     | FRONT COVER               | 2041           |
|             | <-- 926/2050 --> 926/2050 |                |
| 01-0005     | FLYWHEEL HOUSING          | 2050           |
|             | <-- 926/0101 --> 926/0300 |                |
|             | <-- 926/1001 --> 926/1263 |                |
| 01-0006     | FLYWHEEL HOUSING          | 2055           |
|             | <-- 926/1264              |                |
| 01-0007     | CYLINDER HEAD             | 2060           |
| 01-0008     | ENGINE BREATHING          | 2065           |
|             | <-- 926/0101 --> 926/0300 |                |
|             | <-- 926/1001 --> 926/1685 |                |
|             | <-- 926/1687 --> 926/1688 |                |
|             | <-- 926/1690 --> 926/1693 |                |
| 01-0009     | ENGINE BREATHING          | 2066           |
|             | <-- 926/1686 --> 926/1686 |                |
|             | <-- 926/1689 --> 926/1689 |                |
|             | <-- 926/1694              |                |
| 01-0010     | CRANKSHAFT                | 2070           |
| 01-0011     | PISTON                    | 2080           |
| 01-0012     | CAMSHAFT                  | 2090           |
| 01-0013     | VALVE DRIVE               | 2100           |
| 01-0014     | OIL PAN                   | 2110           |
|             | <-- 926/0101 --> 926/0300 |                |
|             | <-- 926/1001 --> 926/1685 |                |
|             | <-- 926/1687 --> 926/1688 |                |
|             | <-- 926/1690 --> 926/1693 |                |
| 01-0015     | OIL PAN                   | 2111           |
|             | <-- 926/1686 --> 926/1686 |                |
|             | <-- 926/1689 --> 926/1689 |                |
|             | <-- 926/1694              |                |
| 01-0016     | GEAR PUMP                 | 2120           |
| 01-0017     | OIL FILTER/-COOLER        | 2130           |
| 01-0018     | INJECTION PUMP            | 2140           |
|             | <-- 926/0101 --> 926/0300 |                |
|             | <-- 926/1001 --> 926/2049 |                |
|             | <-- 926/2051              |                |
| 01-0019     | INJECTION PUMP            | 2141           |
|             | <-- 926/2050 --> 926/2050 |                |
| 01-0020     | FUEL PUMP                 | 2150           |
| 01-0021     | INJECTOR VALVE            | 2160           |
| 01-0022     | FUEL PRESSURE LINES       | 2170           |
| 01-0023     | FUEL FILTER               | 2180           |
| 01-0024     | FUEL LINES                | 2190           |
| 01-0025     | PREFILTER                 | 2260           |
|             | <-- 926/1565              |                |
| 01-0026     | FUEL TANK                 | 2280           |
|             | <-- 926/0101 --> 926/0300 |                |
|             | <-- 926/1001 --> 926/1060 |                |
| 01-0027     | FUEL TANK                 | 2285           |
|             | <-- 926/1061              |                |
| 01-0028     | COLD STARTING AID         | 2310           |
| 01-0029     | WATER COOLED RADIATOR     | 2320           |
| 01-0030     | COOL. WATER PIPING        | 2340           |
| 01-0031     | WATER PUMP                | 2350           |
|             | ENGINE NUMBER             |                |
|             | --> 162 9722 000 ....     |                |
| 01-0032     | WATER PUMP                | 2355           |
|             | ENGINE NUMBER             |                |
|             | <-- 162 9722 001 ....     |                |
| 01-0033     | COLL. WATER PIPING        | 2360           |

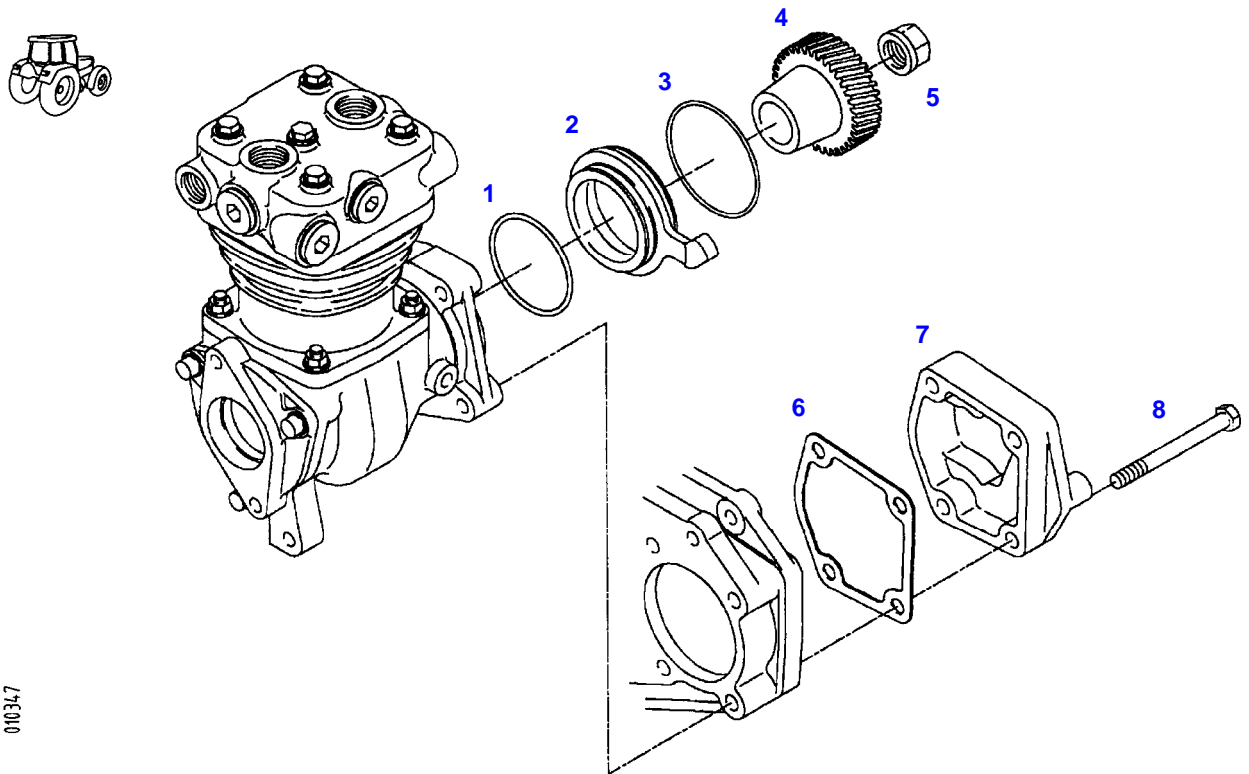
| Page Number | Page Title                | Page Reference |
|-------------|---------------------------|----------------|
| 01-0034     | AIR FILTER                | 2365           |
| 01-0035     | AIR FILTER                | 2370           |
|             | SUCTION PIPE              |                |
| 01-0036     | BOOST INTERCOOLING        | 2390           |
| 01-0037     | SUCTION PIPE              | 2400           |
| 01-0038     | TURBO-SUPERCHARGER        | 2410           |
| 01-0039     | TURBO-SUPERCHARGER        | 2415           |
|             | OIL PRESSURE PIPE         |                |
|             | <-- 926/0101 --> 926/0300 |                |
|             | <-- 926/1001 --> 926/1685 |                |
|             | <-- 926/1687 --> 926/1688 |                |
|             | <-- 926/1690 --> 926/1693 |                |
| 01-0040     | TURBO-SUPERCHARGER        | 2416           |
|             | OIL PRESSURE PIPE         |                |
|             | <-- 926/1686 --> 926/1686 |                |
|             | <-- 926/1689 --> 926/1689 |                |
|             | <-- 926/1694              |                |
| 01-0041     | EXHAUST BEND              | 2420           |
|             | ENGINE NUMBER             |                |
|             | --> 162 8674 590 ....     |                |
| 01-0042     | EXHAUST BEND              | 2422           |
|             | ENGINE NUMBER             |                |
|             | <-- 162 8674 591 ....     |                |
| 01-0043     | EXHAUST                   | 2440           |
| 01-0044     | EXHAUST BRAKE             | 2450           |
| 01-0045     | ENGINE STOP               | 2460           |
| 01-0046     | SPEED CONTROL             | 2480           |
|             | FOOT OPERATION            |                |
| 01-0047     | SPEED CONTROL             | 2490           |
|             | MANUAL OPERATION          |                |
| 01-0048     | FAN FRAME                 | 2660           |
| 01-0049     | V-BELT                    | 2665           |
| 01-0050     | VISCO FAN                 | 2680           |
| 01-0051     | TENSION ROLLER            | 2690           |
| 01-0052     | ENGINE PRE-HEATER         | 2750           |

FAVORIT 926 (926/00101-00400 & 01001-03000)  
40528



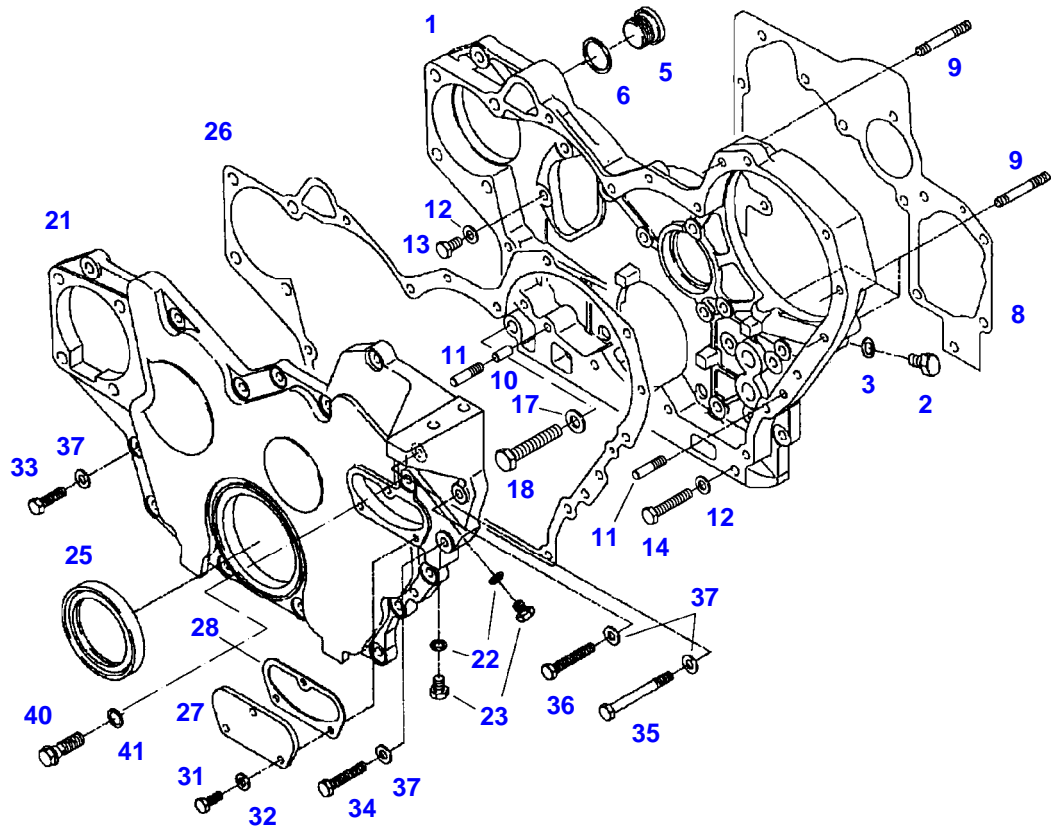
040528

| Item | Part Number | Qty | Description<br>Comments                  | Technical Specification |
|------|-------------|-----|--|-------------------------|
|      | 72425111    | 1   | SHORT ENGINE                             |                         |
| 1    | 72311577    | 1   | CRANKCASE<br>><2-24,41,42                |                         |
| 2    | 72315380    | 14  | WASHER HEAD BOLT                         |                         |
| 3    | 72313719    | 14  | CYLINDER PIN                             |                         |
| 5    | 72316153    | 4   | BEARING CUP<br>55,07MM                   |                         |
|      | 72310225    | 4   | BEARING CUP<br>55,10MM                   |                         |
| 7    | 72417059    | 8   | COVER<br>62,20MM                         |                         |
|      | 72311421    | 8   | COVER<br>63,00MM                         |                         |
| 8    | 72311422    | 11  | COVER<br>50,20MM                         |                         |
|      | 72311423    | 11  | COVER<br>51,00MM                         |                         |
| 9    | 72311424    | 6   | COVER<br>40,20MM                         |                         |
|      | 72311425    | 6   | COVER<br>41,00MM                         |                         |
| 10   | 72311426    | 5   | COVER                                    |                         |
| 12   | 72311432    | 2   | COVER                                    |                         |
| 13   | 72310168    | 2   | BALL                                     |                         |
| 14   | 72314696    | 1   | SEALING PLUG                             |                         |
| 15   | 72312123    | 1   | BLANK FLANGE                             |                         |
| 16   | 72312258    | 1   | SEAL                                     |                         |
| 17   | 72315630    | 2   | HEXAGONAL HEAD BOLT                      | DIN 933 M6X18-8.8A3L    |
| 18   | 72311787    | 2   | DISC                                     | DIN 125-6,4-ST.A3L      |
| 19   | 72315799    | 1   | PLUG                                     | DIN 7604 AM14X1,5-A3L   |
| 20   | 72315094    | 1   | SEALING WASHER                           | DIN 7603 A14X18-CU      |
| 21   | 72312125    | 1   | FLANGE                                   |                         |
| 22   | 72312268    | 1   | SEAL                                     |                         |
| 23   | 72315650    | 2   | HEXAGONAL HEAD BOLT                      | DIN 933 M8 X 20-8.8A3L  |
| 24   | 72311788    | 2   | DISC                                     | DIN 125-8,4-ST.A3L      |
| 26   | 72313100    | 6   | SLEEVE BUSHING                           |                         |
|      | 72431672    | 6   | CYLINDER LINER<br>COLLAR OVERSIZE 0.20MM |                         |
| 27   | 72313230    | 6   | OIL SPLASH NOZZLE<br>><28                |                         |
| 28   |             |     | NOT AVAILABLE IN SINGLE PARTS            |                         |
| 29   | 72317037    | 6   | OIL PRESSURE VALVE                       |                         |
| 30   | 72317123    | 6   | SPRING WASHER                            | DIN 137 B12-ZNPHR       |
| 31   | 72313719    | 6   | CYLINDER PIN                             |                         |
| 32   | 72313721    | 2   | CENTERING PIN                            |                         |
| 33   | 72313829    | 1   | TENSIONING PIN                           | ISO8752-8X32-A-ST       |
| 35   | 72428719    | 1   | ENGINE SUPPORT                           |                         |
| 36   | 72315686    | 1   | HEXAGONAL HEAD BOLT                      | DIN 933-M10X35-12.9     |
| 37   | 72315559    | 4   | HEXAGONAL HEAD BOLT                      | DIN 931 M12X60 GWA-10.9 |
| 38   | 72428720    | 1   | ENGINE SUPPORT                           |                         |
| 39   | 72315713    | 4   | HEXAGONAL HEAD BOLT                      | DIN 933 M12X40 GWA-10.9 |
| 41   | 72315445    | 3   | PLUG                                     | DIN 908 M30X1,5-ST      |
| 42   | 72315105    | 3   | SEALING WASHER                           | DIN 7603 A30X36-CU      |
| 44   | 72312042    | 1   | SUSPENSION EYE                           |                         |
| 45   | 72315721    | 1   | HEXAGONAL HEAD BOLT                      | DIN 933 M14X25-8.8A3L   |
| 46   | 72311792    | 1   | DISC                                     | DIN125-15-ST            |
| 47   | 72313159    | 1   | ADHESIVE                                 | LOCTITE 648 50ML        |
| 48   | 72311273    | 1   | SEALING COMPOUND                         | TEROST-63S              |
| 49   | 72312365    | 1   | SEAL KIT<br><>                           |                         |
|      | 72426464    | 24  | HEX BOLT, WITH COLLAR                    |                         |



| <b>Item</b> | <b>Part Number</b> | <b>Qty</b> | <b>Description<br/>Comments</b> | <b>Technical Specification</b> |
|-------------|--------------------|------------|---------------------------------|--------------------------------|
| 1           | 72313536           | 1          | SEAL                            |                                |
| 2           | 72312004           | 1          | ECCENTRIC                       |                                |
| 3           | 72313390           | 1          | O-RING                          |                                |
| 4           | 72417063           | 1          | DRIVE GEAR                      |                                |
| 5           | 72313333           | 1          | WHEEL NUT                       | DIN74361-B20-8                 |
| 6           | 72312269           | 1          | SEAL                            |                                |
| 7           | 72311433           | 1          | COVER                           |                                |
| 8           | 72315551           | 4          | HEXAGONAL HEAD BOLT             | DIN 931 M10X100-8.8            |

FAVORIT 926 (926/00101-00400 & 01001-03000)  
10139

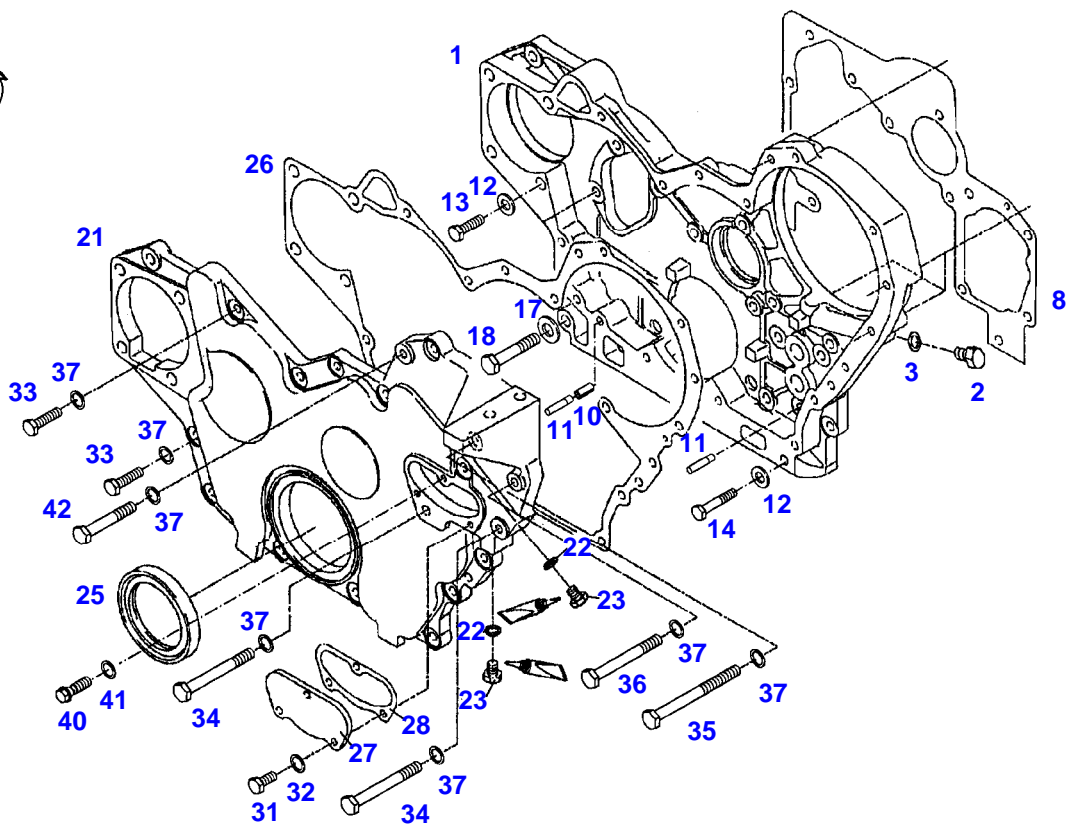


010139



| Item | Part Number | Qty | Description<br>Comments  | Technical Specification |
|------|-------------|-----|--|-------------------------|
|      |             |     | <-- 926/0101 --> 926/0300<br><-- 926/1001 --> 926/2049<br><-- 926/2051 |                         |
| 1    | 72312752    | 1   | CONTROL HOUSING<br>><2-6   |                         |
| 2    | 72315627    | 1   | HEXAGONAL HEAD BOLT  | DIN 933 M6X8-8.8A3L     |
| 3    | 72315084    | 1   | SEALING WASHER   | DIN 7603 A6X10-CU       |
| 5    | 72315442    | 1   | PLUG   | DIN 908 M22X1,5-ST      |
| 6    | 72315101    | 1   | SEALING WASHER   | DIN 7603 A22X27-CU      |
| 8    | 72312259    | 1   | SEAL   |                         |
| 9    | 72313755    | 4   | STUD BOLT  | DIN 835 M8X50-8.8-ZNP   |
| 10   | 72313848    | 1   | TENSIONING PIN   | ISO8750-8X16-ST         |
| 11   | 72313720    | 2   | CENTERING PIN  |                         |
| 12   | 72311788    | 12  | DISC   | DIN 125-8,4-ST.A3L      |
| 13   | 72315653    | 11  | HEXAGONAL HEAD BOLT  | DIN 933 M8 X 25-8.8A3L  |
| 14   | 72315529    | 1   | HEXAGONAL HEAD BOLT  | DIN 931 M8X50-8.8A3L    |
| 17   | 72311789    | 1   | DISC   | DIN 125-10,5-ST.A3L     |
| 18   | 72315544    | 1   | HEXAGONAL HEAD BOLT  | DIN 931 M10X50-8.8A3L   |
| 21   | 72311431    | 1   | COVER<br>><22+23   |                         |
| 22   | 72315084    | 2   | SEALING WASHER   | DIN 7603 A6X10-CU       |
| 23   | 72315627    | 2   | HEXAGONAL HEAD BOLT  | DIN 933 M6X8-8.8A3L     |
| 25   | 72346310    | 1   | SHAFT SEALING RINGS  |                         |
| 26   | 72312260    | 1   | SEAL   |                         |
| 27   | 72311419    | 1   | COVER  |                         |
| 28   | 72312261    | 1   | SEAL   |                         |
| 31   | 72315625    | 3   | HEXAGONAL HEAD BOLT  | DIN 933 M6X16-8.8       |
| 32   | 72311787    | 3   | DISC   | DIN 125-6,4-ST.A3L      |
| 33   | 72315657    | 12  | HEXAGONAL HEAD BOLT  | DIN 933 M8 X 30-8.8A3L  |
| 34   | 72315665    | 1   | HEXAGONAL HEAD BOLT  | DIN 933 M8X45-8.8A3L    |
| 35   | 72315535    | 1   | HEXAGONAL HEAD BOLT  | DIN 931 M8X75 GWA-10.9  |
| 36   | 72315668    | 1   | HEXAGONAL HEAD BOLT  | DIN 933 M8X50-8.8A3L    |
| 37   | 72311788    | 15  | DISC   | DIN 125-8,4-ST.A3L      |
| 40   | 72315379    | 1   | SCREW  |                         |
| 41   | 72315086    | 1   | SEALING WASHER   | DIN 7603 A8X11,5-CU     |

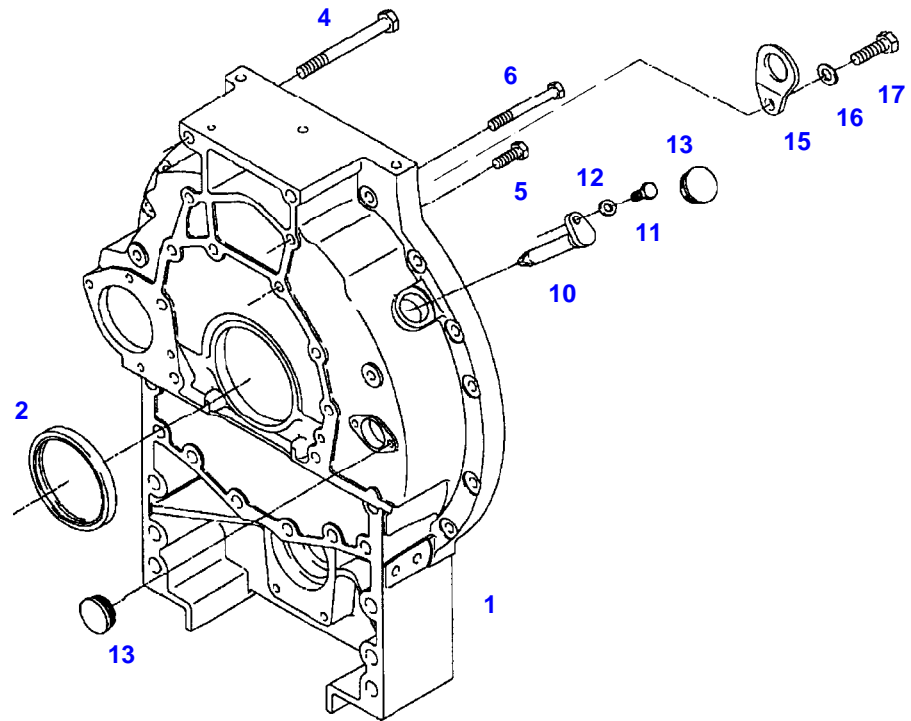
FAVORIT 926 (926/00101-00400 & 01001-03000)  
32035



032035

| Item | Part Number | Qty | Description<br>Comments   | Technical Specification    |
|------|-------------|-----|---------------------------|----------------------------|
|      |             |     | <-- 926/2050 --> 926/2050 |                            |
| 1    | 72425933    | 1   | CONTROL HOUSING<br>><2-6  |                            |
| 2    | 72315627    | 1   | HEXAGONAL HEAD BOLT       | DIN 933 M6X8-8.8A3L        |
| 3    | 72417153    | 1   | SEALING WASHER            |                            |
| 8    | 72312259    | 1   | SEAL                      |                            |
| 10   | 72313848    | 1   | TENSIONING PIN            | ISO8750-8X16-ST            |
| 11   | 72313720    | 2   | CENTERING PIN             |                            |
| 12   | 72311788    | 12  | DISC                      | DIN 125-8,4-ST.A3L         |
| 13   | 72315653    | 11  | HEXAGONAL HEAD BOLT       | DIN 933 M8 X 25-8.8A3L     |
| 14   | 72315529    | 1   | HEXAGONAL HEAD BOLT       | DIN 931 M8X50-8.8A3L       |
| 17   | 72311789    | 1   | DISC                      | DIN 125-10,5-ST.A3L        |
| 18   | 72315544    | 1   | HEXAGONAL HEAD BOLT       | DIN 931 M10X50-8.8A3L      |
| 21   | 72425934    | 1   | COVER<br>><22+23          |                            |
| 22   | 72315084    | 2   | SEALING WASHER            | DIN 7603 A6X10-CU          |
| 23   | 72315627    | 2   | HEXAGONAL HEAD BOLT       | DIN 933 M6X8-8.8A3L        |
| 25   | 72346310    | 1   | SHAFT SEALING RINGS       |                            |
| 26   | 72425935    | 1   | SEAL                      |                            |
| 27   | 72425936    | 1   | COVER                     |                            |
| 28   | 72425937    | 1   | SEAL                      |                            |
| 31   | 72315625    | 3   | HEXAGONAL HEAD BOLT       | DIN 933 M6X16-8.8          |
| 32   | 72311787    | 3   | DISC                      | DIN 125-6,4-ST.A3L         |
| 33   | 72315657    | 12  | HEXAGONAL HEAD BOLT       | DIN 933 M8 X 30-8.8A3L     |
| 34   | 72374162    | 2   | HEXAGONAL HEAD BOLT       | DIN 931 M8X75-8.8          |
| 35   | 72425955    | 1   | HEXAGONAL HEAD BOLT       | DIN 931 M8X105-10.9        |
| 36   | 72315538    | 1   | HEXAGONAL HEAD BOLT       | DIN 931-M8X80-10.9-ZNPHR3F |
| 37   | 72311788    | 15  | DISC                      | DIN 125-8,4-ST.A3L         |
| 40   | 72315379    | 1   | SCREW                     |                            |
| 41   | 72315086    | 1   | SEALING WASHER            | DIN 7603 A8X11,5-CU        |
| 42   | 72374161    | 1   | HEXAGONAL HEAD BOLT       | DIN 931 M8X60 GWA-10.9     |

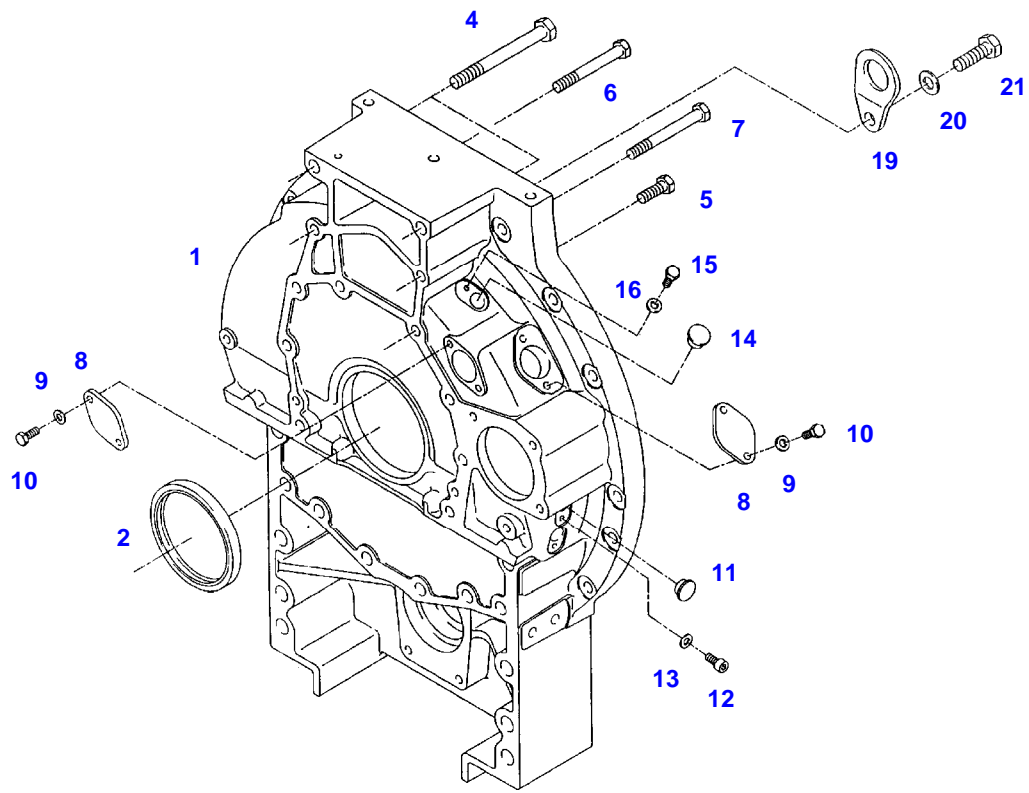
FAVORIT 926 (926/00101-00400 & 01001-03000)  
10340



010340

| Item | Part Number | Qty | Description<br>Comments                                | Technical Specification     |
|------|-------------|-----|--|-----------------------------|
|      |             |     | <-- 926/0101 --> 926/0300<br><-- 926/1001 --> 926/1263 |                             |
| 1    | 72347062    | 1   | FLYWHEEL HOUSING<br>><2                                |                             |
| 2    | 72315031    | 1   | SHAFT SEALING RINGS                                    |                             |
| 4    | 72315580    | 2   | HEXAGONAL HEAD BOLT                                    | DIN931-M14X140-10.9-ZNPHR3F |
| 5    | 72315710    | 8   | HEXAGONAL HEAD BOLT                                    | DIN 933-M12X35 GWA-10.9     |
| 6    | 72315567    | 2   | HEXAGONAL HEAD BOLT                                    | DIN 931 M12X100 GWA-10.9    |
| 10   | 72346286    | 1   | POINTER  |                             |
| 11   | 72315625    | 1   | HEXAGONAL HEAD BOLT                                    | DIN 933 M6X16-8.8           |
| 12   | 72311787    | 1   | DISC   | DIN 125-6,4-ST.A3L          |
| 13   | 72314695    | 2   | LOCKING PLUG   |                             |
| 15   | 72312041    | 1   | EYE  |                             |
| 16   | 72311792    | 2   | DISC   | DIN125-15-ST                |
| 17   | 72315721    | 2   | HEXAGONAL HEAD BOLT                                    | DIN 933 M14X25-8.8A3L       |

FAVORIT 926 (926/00101-00400 & 01001-03000)  
40412



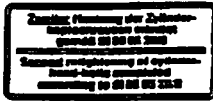
040412

| Item | Part Number | Qty | Description<br>Comments  | Technical Specification     |
|------|-------------|-----|--|-----------------------------|
|      |             |     | <-- 926/1264   |                             |
| 1    | 72415318    | 1   | FLYWHEEL HOUSING<br>><2<br>ENG.NO.<br>--> 162 8854 999 .... <><br><> |                             |
|      | 72315084    | 1   | SEALING WASHER   | DIN 7603 A6X10-CU           |
|      | 72315758    | 1   | HEXAGONAL HEAD BOLT  | DIN 933 M6X12 SK-8.8A3L     |
|      | 72416967    | 1   | PLUG   |                             |
|      | 72315569    | 1   | HEXAGONAL HEAD BOLT  | DIN 931 M12X110 GWA-10.9    |
| 2    | 72315031    | 1   | SHAFT SEALING RINGS  |                             |
| 4    | 72315580    | 2   | HEXAGONAL HEAD BOLT  | DIN931-M14X140-10.9-ZNPHR3F |
| 5    | 72315710    | 8   | HEXAGONAL HEAD BOLT  | DIN 933-M12X35 GWA-10.9     |
| 6    | 72315567    | 1   | HEXAGONAL HEAD BOLT  | DIN 931 M12X100 GWA-10.9    |
| 7    | 72315567    | 1   | HEXAGONAL HEAD BOLT<br>ENG.NO.<br>--> 162 8854 999 ....              | DIN 931 M12X100 GWA-10.9    |
|      | 72315569    | 1   | HEXAGONAL HEAD BOLT<br>ENG.NO.<br><-- 162 8855 001 ....              | DIN 931 M12X110 GWA-10.9    |
| 8    | 72312124    | 2   | BLANK FLANGE   |                             |
| 9    | 72311788    | 4   | DISC   | DIN 125-8,4-ST.A3L          |
| 10   | 72315653    | 4   | HEXAGONAL HEAD BOLT  | DIN 933 M8 X 25-8.8A3L      |
| 11   | 72346444    | 1   | LOCKING PLUG   |                             |
| 12   | 72374017    | 1   | SOCKET HEAD BOLT   | DIN 912 M8X12-8.8           |
| 13   | 72315087    | 1   | SEALING WASHER   | DIN 7603 A8X14-CU           |
| 14   | 72416967    | 1   | PLUG   |                             |
| 15   | 72315758    | 1   | HEXAGONAL HEAD BOLT  | DIN 933 M6X12 SK-8.8A3L     |
| 16   | 72315084    | 1   | SEALING WASHER   | DIN 7603 A6X10-CU           |
| 19   | 72312041    | 1   | EYE  |                             |
| 20   | 72315721    | 2   | HEXAGONAL HEAD BOLT  | DIN 933 M14X25-8.8A3L       |
| 21   | 72311792    | 2   | DISC   | DIN125-15-ST                |

FAVORIT 926 (926/00101-00400 & 01001-03000)  
10745

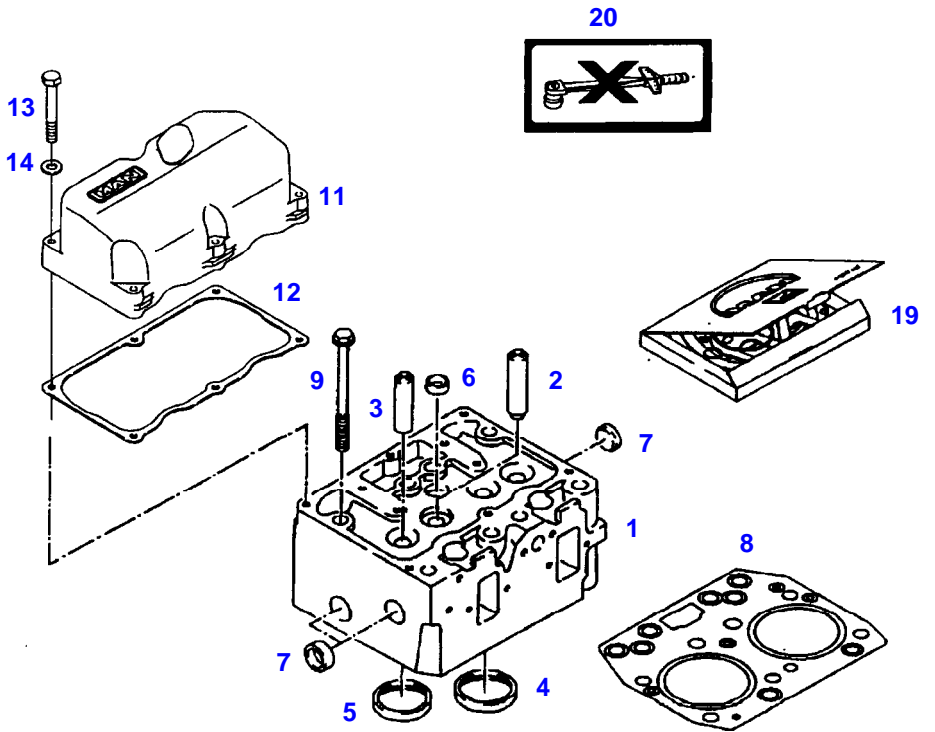


17



18

010745





| Item | Part Number | Qty | Description<br>Comments  | Technical Specification       |
|------|-------------|-----|--|-------------------------------|
| 1    | 72497995    | 3   | CYLINDER HEAD<br>><-2-7  |                               |
| 2    | 72310651    | 6   | VALVE GUIDE<br>16,00MM<br>INTAKE   |                               |
|      | 72310652    | 6   | VALVE GUIDE<br>16,25MM<br>INTAKE   |                               |
| 3    | 72310653    | 6   | VALVE GUIDE<br>16,00MM<br>OUTLET   |                               |
|      | 72310654    | 6   | VALVE GUIDE<br>16,25MM<br>OUTLET   |                               |
| 4    | 72315032    | 6   | VALVE SEAT RING<br>51,11MM<br>INTAKE   |                               |
|      | 72315033    | 6   | VALVE SEAT RING<br>51,31MM<br>INTAKE   |                               |
| 5    | 72315034    | 6   | VALVE SEAT RING<br>44,10MM<br>OUTLET   |                               |
|      | 72315035    | 6   | VALVE SEAT RING<br>44,30MM<br>OUTLET   |                               |
| 6    | 72311428    | 3   | COVER  |                               |
| 7    | 72311429    | 9   | COVER  |                               |
| 8    | 72312241    | 3   | CYLINDER HEAD GASKET<br><>   |                               |
|      | 72426464    | 8   | HEX BOLT, WITH COLLAR  |                               |
| 9    | 72426464    | 24  | HEX BOLT, WITH COLLAR<br>MUST NOT BE RETIGHTENED<br>SCREWS-TO BE USED ONCE ONLY<br>ENG.NO.<br><-- 162 7200 000 .... <><br>--> 162 8420 999 .... <><br><> |                               |
|      | 72423094    | 1   | MARKING PLATE  |                               |
| 11   | 72311630    | 3   | CYLINDER HEAD COVER  |                               |
| 12   | 72317854    | 3   | SEAL   |                               |
| 13   | 72315520    | 18  | HEXAGONAL HEAD BOLT  | DIN<br>931-M6X40-10.9-ZNPHR3F |
|      | 72416968    | 18  | TORX SCREW   |                               |
| 14   | 72311787    | 18  | DISC<br>NOT USED WITH TORX SCREW   | DIN 125-6,4-ST.A3L            |
| 17   | 72314423    | 1   | LABEL<br>D,GB<br>ENG.NO.<br><-- 162 7200 000 ....<br>--> 162 8420 999 ....   |                               |
|      | 72314424    | 1   | LABEL<br>F,E<br>ENG.NO.<br><-- 162 7200 000 ....<br>--> 162 8420 999 ....  |                               |
| 18   | 72314425    | 1   | LABEL<br>D,GB<br>ENG.NO.<br><-- 162 7200 000 ....<br>--> 162 8420 999 ....   |                               |
|      | 72314426    | 1   | LABEL<br>F,E<br>ENG.NO.<br><-- 162 7200 000 ....<br>--> 162 8420 999 ....  |                               |

---

Fendt

FAVORIT 926 (926/00101-00400 & 01001-03000)

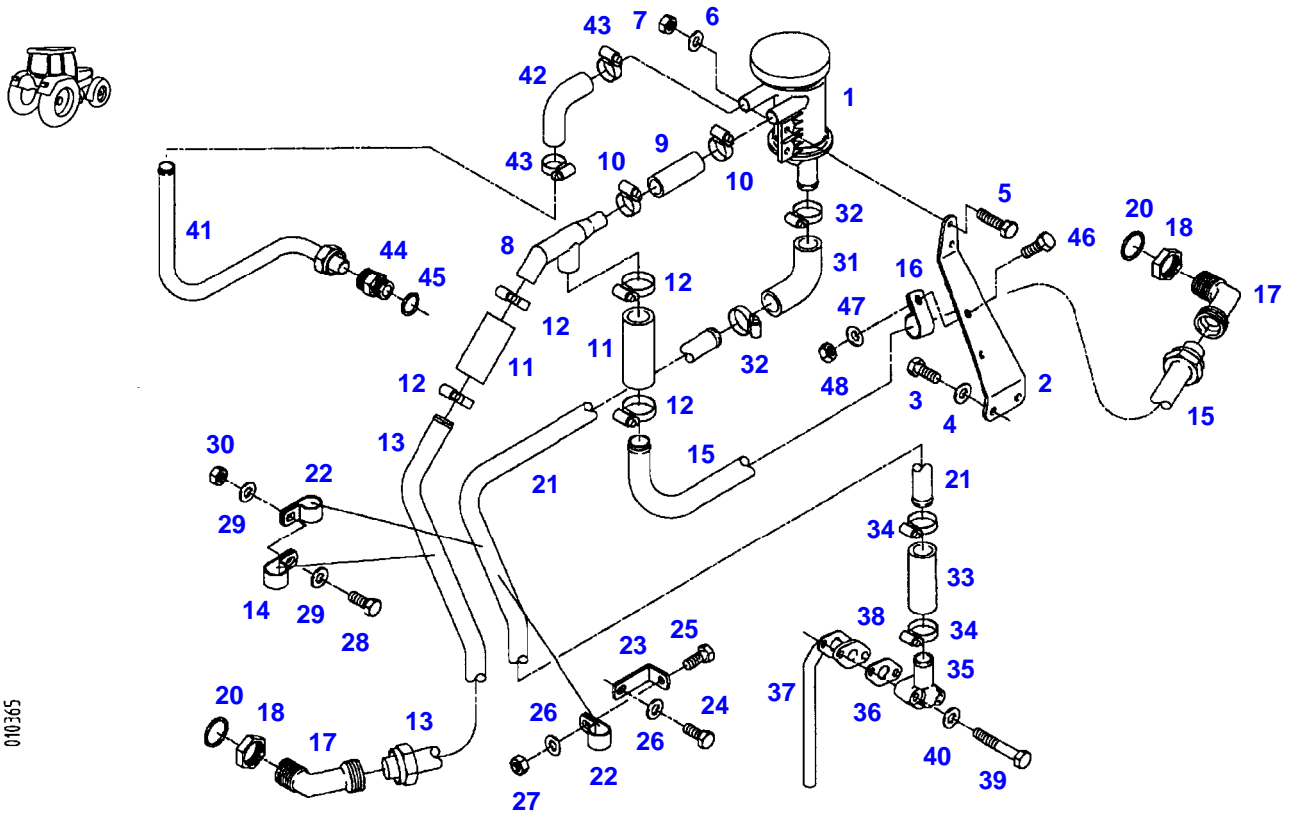
F926000

CYLINDER HEAD

Page01-0007

| Item | Part Number | Qty | Description<br>Comments | Technical Specification |
|------|-------------|-----|-------------------------|-------------------------|
| 19   | 72312366    | 3   | SEAL KIT<br><>          |                         |
|      | 72426464    | 8   | HEX BOLT, WITH COLLAR   |                         |
| 20   | 72423094    | 1   | MARKING PLATE           |                         |

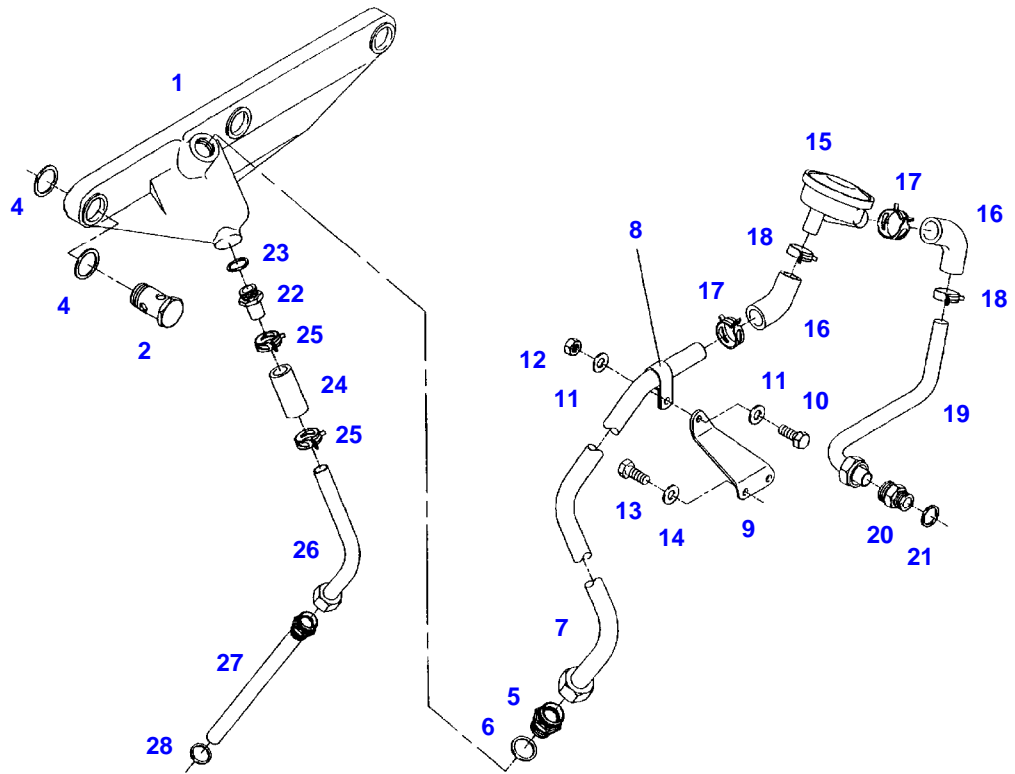
FAVORIT 926 (926/00101-00400 & 01001-03000)  
10365



010365

| Item | Part Number | Qty | Description<br>Comments                    | Technical Specification |
|------|-------------|-----|--|-------------------------|
|      |             |     | <-- 926/0101 --> 926/0300                  |                         |
|      |             |     | <-- 926/1001 --> 926/1685                  |                         |
|      |             |     | <-- 926/1687 --> 926/1688                  |                         |
|      |             |     | <-- 926/1690 --> 926/1693                  |                         |
| 1    | 72317041    | 1   | OIL SEPARATOR VALVE                        |                         |
| 2    |             |     | NO LONGER AVAILABLE                        |                         |
| 3    | 72315651    | 2   | HEXAGONAL HEAD BOLT                        | DIN 933 M8X22-8.8A3L    |
| 4    | 72311788    | 2   | DISC                                       | DIN 125-8,4-ST.A3L      |
| 5    | 72315631    | 2   | HEXAGONAL HEAD BOLT                        | DIN 933 M6 X 20-8.8A3L  |
| 6    | 72311828    | 2   | DISC                                       | DIN 7349-6,4-ST.A3L     |
| 7    | 72313266    | 2   | NUT  | DIN 934 M6-8A3L         |
| 8    | 72312014    | 1   | BREATHER MANIFOLD                          |                         |
| 9    | 72450423    | 1   | PRESSURE HOSE<br>1X 100MM<br>CUT TO LENGTH | L=120                   |
| 10   | 72611218    | 2   | CLIP                                       |                         |
| 11   | 72450424    | 1   | PRESSURE HOSE<br>1X 200MM<br>CUT TO LENGTH | L=220                   |
| 12   | 72316561    | 4   | CLIP                                       |                         |
| 13   | 72313052    | 1   | BREATHER LINE<br>><14                      |                         |
| 14   | 72311229    | 1   | PIPE CLAMP                                 |                         |
| 15   | 72313053    | 1   | BREATHER LINE<br>><16                      |                         |
| 16   | 72311229    | 1   | PIPE CLAMP                                 |                         |
| 17   | 72312015    | 2   | ANGULAR ADAPTER                            |                         |
| 18   | 72313257    | 2   | NUT  |                         |
| 20   | 72315105    | 2   | SEALING WASHER                             | DIN 7603 A30X36-CU      |
| 21   | 72316954    | 1   | OIL RETURN LINE<br>><22                    |                         |
| 22   | 72311210    | 2   | PIPE CLAMP                                 |                         |
| 23   | 72316657    | 1   | RETAINER                                   |                         |
| 24   | 72315650    | 1   | HEXAGONAL HEAD BOLT                        | DIN 933 M8 X 20-8.8A3L  |
| 25   | 72315650    | 1   | HEXAGONAL HEAD BOLT                        | DIN 933 M8 X 20-8.8A3L  |
| 26   | 72311788    | 2   | DISC                                       | DIN 125-8,4-ST.A3L      |
| 27   | 72313268    | 1   | NUT  | DIN 934 M8-8A3L         |
| 28   | 72315650    | 1   | HEXAGONAL HEAD BOLT                        | DIN 933 M8 X 20-8.8A3L  |
| 29   | 72311788    | 2   | DISC                                       | DIN 125-8,4-ST.A3L      |
| 30   | 72313268    | 1   | NUT  | DIN 934 M8-8A3L         |
| 31   | 72313642    | 1   | MOLDED PIECE                               |                         |
| 32   | 72608303    | 2   | CLIP                                       |                         |
| 33   | 72430361    | 1   | PRESSURE HOSE<br>1X 100MM<br>CUT TO LENGTH | L=240 FWN66041-DN22-B10 |
| 34   | 72608303    | 2   | CLIP                                       |                         |
| 35   | 72312122    | 1   | FLANGE                                     |                         |
| 36   | 72312256    | 1   | SEAL                                       |                         |
| 37   | 72316955    | 1   | OIL RETURN LINE                            |                         |
| 38   | 72312256    | 1   | SEAL                                       |                         |
| 39   | 72315665    | 2   | HEXAGONAL HEAD BOLT                        | DIN 933 M8X45-8.8A3L    |
| 40   | 72311788    | 2   | DISC                                       | DIN 125-8,4-ST.A3L      |
| 41   | 72313054    | 1   | BREATHER LINE                              |                         |
| 42   | 72435869    | 1   | RUBBER ARCH                                |                         |
| 43   | 72611218    | 2   | CLIP                                       |                         |
| 44   | 72316291    | 1   | THREADED STUD                              |                         |
| 45   | 72315101    | 1   | SEALING WASHER                             | DIN 7603 A22X27-CU      |
| 46   | 72315650    | 1   | HEXAGONAL HEAD BOLT                        | DIN 933 M8 X 20-8.8A3L  |
| 47   | 72311788    | 1   | DISC                                       | DIN 125-8,4-ST.A3L      |
| 48   | 72313268    | 1   | NUT  | DIN 934 M8-8A3L         |

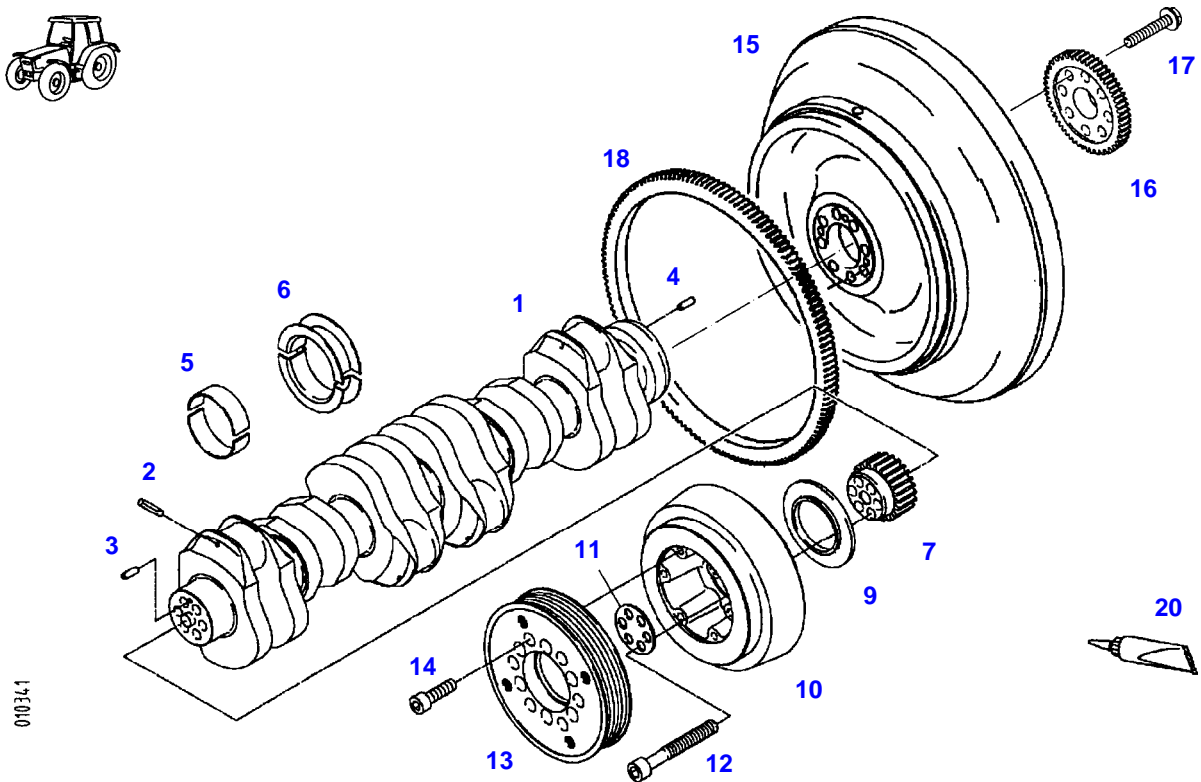
FAVORIT 926 (926/00101-00400 & 01001-03000)  
40597



040597

| Item | Part Number | Qty | Description<br>Comments   | Technical Specification |
|------|-------------|-----|---------------------------|-------------------------|
|      |             |     | <-- 926/1686 --> 926/1686 |                         |
|      |             |     | <-- 926/1689 --> 926/1689 |                         |
|      |             |     | <-- 926/1694              |                         |
| 1    | 72422677    | 1   | BREATHER MANIFOLD         |                         |
| 2    | 72417073    | 3   | BANJO BOLT                |                         |
| 4    | 72417074    | 6   | SEALING WASHER            |                         |
| 5    | 72417169    | 1   | THREADED STUD             |                         |
| 6    | 72315104    | 1   | SEALING WASHER            | DIN 7603 A26X31-CU      |
| 7    | 72422679    | 1   | BREATHER LINE<br>><8      |                         |
| 8    | 72311210    | 1   | PIPE CLAMP                |                         |
| 9    | 72422680    | 1   | RETAINER                  |                         |
| 10   | 72315651    | 1   | HEXAGONAL HEAD BOLT       | DIN 933 M8X22-8.8A3L    |
| 11   | 72311788    | 2   | DISC                      | DIN 125-8,4-ST.A3L      |
| 12   | 72313268    | 1   | NUT                       | DIN 934 M8-8A3L         |
| 13   | 72315651    | 2   | HEXAGONAL HEAD BOLT       | DIN 933 M8X22-8.8A3L    |
| 14   | 72311788    | 2   | DISC                      | DIN 125-8,4-ST.A3L      |
| 15   | 72317038    | 1   | CONTROL VALVE             |                         |
| 16   | 72417078    | 2   | HOSE PIECE                |                         |
| 17   | 72316562    | 2   | CLIP                      |                         |
| 18   | 72611218    | 2   | CLIP                      |                         |
| 19   | 72422681    | 1   | BREATHER LINE             |                         |
| 20   | 72417075    | 1   | THREADED STUD             |                         |
| 21   | 72315101    | 1   | SEALING WASHER            | DIN 7603 A22X27-CU      |
| 22   | 72417079    | 1   | ADAPTER NIPPLE            |                         |
| 23   | 72315101    | 1   | SEALING WASHER            | DIN 7603 A22X27-CU      |
| 24   | 72312631    | 1   | HOSE                      |                         |
| 25   | 72611218    | 2   | CLIP                      |                         |
| 26   | 72422683    | 1   | OIL RETURN LINE           |                         |
| 27   | 72417080    | 1   | OIL RETURN LINE           |                         |
| 28   | 72315102    | 1   | SEALING WASHER            | DIN 7603 A24X29-CU      |

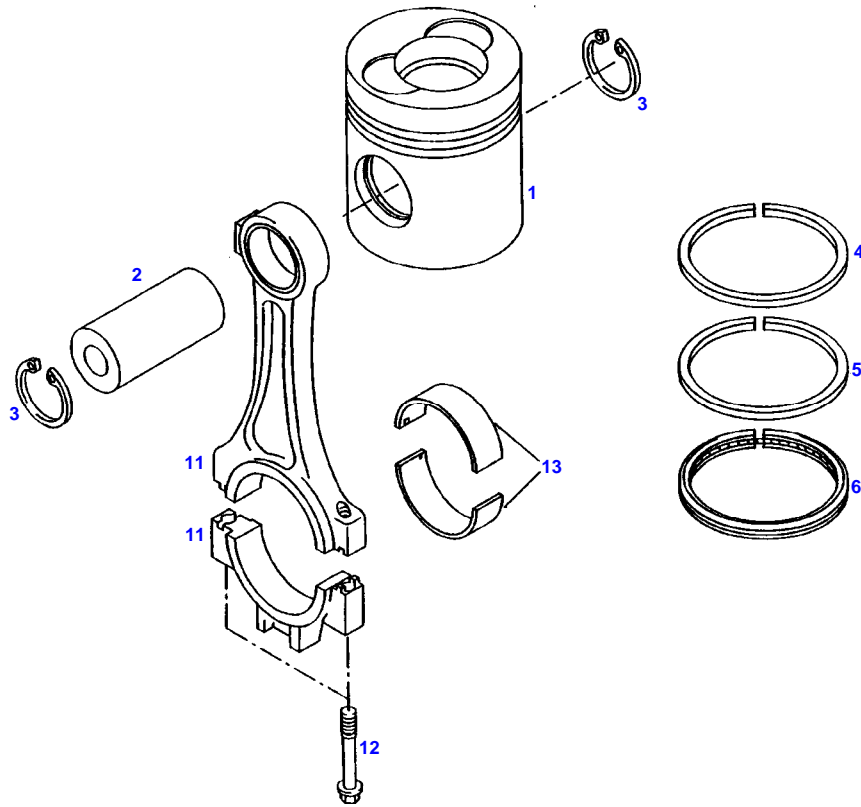
FAVORIT 926 (926/00101-00400 & 01001-03000)  
10341



| Item | Part Number | Qty | Description<br>Comments   | Technical Specification        |
|------|-------------|-----|---|--------------------------------|
| 1    | 72311579    | 1   | CRANKSHAFT<br>><2-4   |                                |
| 2    | 72313722    | 6   | DOWEL PIN   |                                |
| 3    | 72313817    | 1   | TENSIONING PIN  | ISO8752-6X16-A-ST-ZNPHR10F-KOE |
| 4    | 72313849    | 1   | TENSIONING PIN  | ISO8750-8X24-ST                |
| 5    | 72310327    | 6   | MAIN BEARING<br>77,00MM   |                                |
|      | 72310328    | 6   | MAIN BEARING<br>76,90MM   |                                |
|      | 72310329    | 6   | MAIN BEARING<br>76,75MM   |                                |
|      | 72310330    | 6   | MAIN BEARING<br>76,50MM   |                                |
|      | 72310331    | 6   | MAIN BEARING<br>76,25MM   |                                |
|      | 72310332    | 6   | MAIN BEARING<br>76,00MM   |                                |
| 6    | 72310232    | 1   | TIGHT-FIT BEARING<br>77,00MM  |                                |
|      | 72310233    | 1   | TIGHT-FIT BEARING<br>76,90MM  |                                |
|      | 72310234    | 1   | TIGHT-FIT BEARING<br>76,75MM  |                                |
|      | 72310235    | 1   | TIGHT-FIT BEARING<br>76,50MM  |                                |
|      | 72416971    | 1   | TIGHT-FIT BEARING<br>76,25MM  |                                |
|      | 72416972    | 1   | TIGHT-FIT BEARING<br>76,00MM  |                                |
| 7    | 72316540    | 1   | CRANKSHAFT GEAR<br>ENG.NO.<br>--> 162 9031 999 <><br><>                 |                                |
|      | 72416958    | 1   | CAM WHEEL   |                                |
| 9    | 72315016    | 1   | SPRAYER RING  |                                |
| 10   | 72311632    | 1   | VIBRATION DAMPER  |                                |
| 11   | 72311934    | 1   | DISC  |                                |
| 12   | 72315396    | 6   | SOCKET HEAD BOLT  | M14X1,5X105-12.9-PHR           |
| 13   | 72314868    | 1   | V BELT SHEAVE   |                                |
| 14   | 72315495    | 6   | SOCKET HEAD BOLT  | DIN 912 M10X30-10.9            |
| 15   | 72347080    | 1   | FLYWHEEL<br>><18<br>ENG.NO.<br>--> 162 8634 999 ....                    |                                |
|      | 72312182    | 1   | FLYWHEEL<br>><18<br>ENG.NO.<br><-- 162 8635 001 ....                    |                                |
| 16   | 72414307    | 1   | HUB<br>ENG.NO.<br>--> 162 8634 999 ....                                 |                                |
| 17   | 72347081    | 8   | HEX BOLT, WITH COLLAR<br>M14X1,5X70<br>ENG.NO.<br>--> 162 8634 999 .... |                                |
|      | 72315372    | 8   | HEX BOLT, WITH COLLAR<br>M14X1,5X50<br>ENG.NO.<br><-- 162 8635 001 .... |                                |
| 18   | 72312391    | 1   | RING GEAR   |                                |
| 20   | 72311272    | 1   | SEALING COMPOUND  |                                |



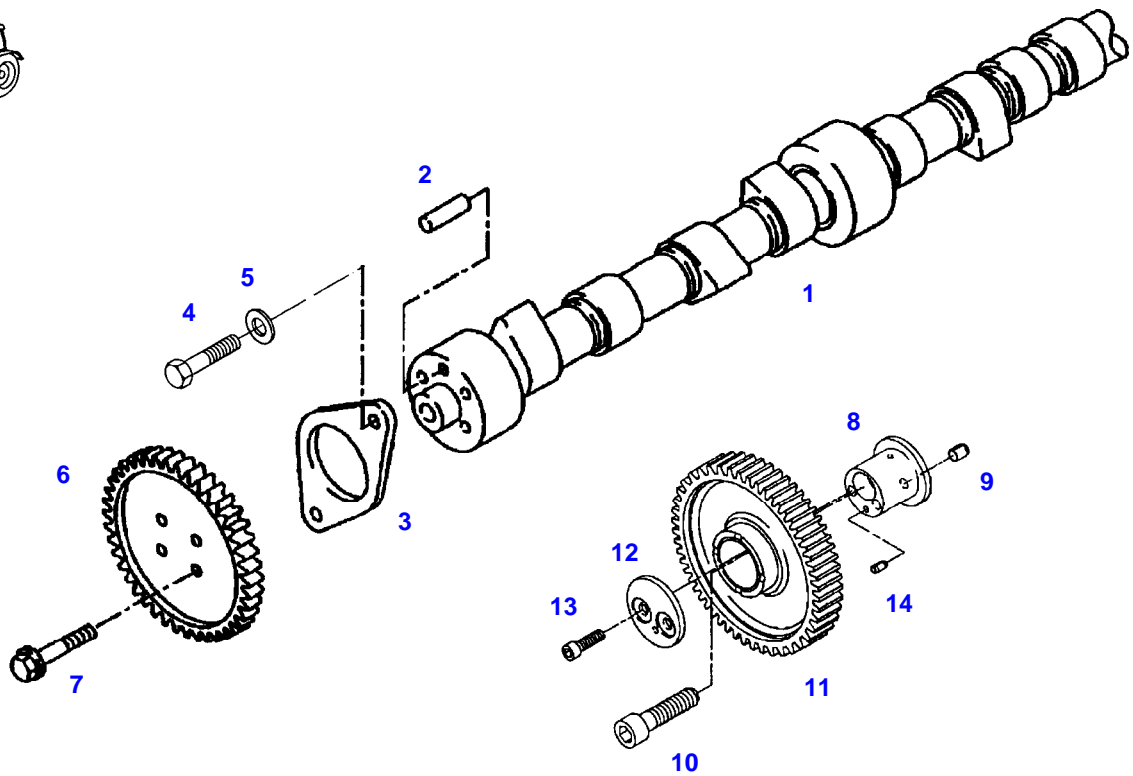
FAVORIT 926 (926/00101-00400 & 01001-03000)  
8735



8735

| Item | Part Number | Qty | Description<br>Comments   | Technical Specification |
|------|-------------|-----|---|-------------------------|
| 1    | 72314357    | 6   | PISTON<br>><2-6   |                         |
| 2    |             |     | NOT AVAILABLE IN SINGLE PARTS                                       |                         |
| 3    | 72311095    | 12  | LOCK WASHER   | DIN 472-40X1,75         |
| 4    | 72315036    | 6   | KEYSTONE RING   |                         |
| 5    | 72317292    | 6   | TAPERED COMPRESSION RING  |                         |
| 6    | 72315017    | 6   | WEDGE-SECTION RING<br>S=4MM   |                         |
| 11   | 72311288    | 6   | PISTON ROD<br>PARALLEL CYLINDER<br>CHANGE SETWISE<br>><12           |                         |
| 12   | 72414855    | 12  | TORX SCREW<br>REPLACE SCREWS SETWISE<br>SCREWS-TO BE USED ONCE ONLY |                         |
| 13   | 72317206    | 6   | CONNECTING ROD BEARING<br>65,00MM                                   |                         |
|      | 72310333    | 6   | CONNECTING ROD BEARING<br>64,90MM                                   |                         |
|      | 72310334    | 6   | CONNECTING ROD BEARING<br>64,75MM                                   |                         |
|      | 72310335    | 6   | CONNECTING ROD BEARING<br>64,50MM                                   |                         |
|      | 72310336    | 6   | CONNECTING ROD BEARING<br>64,25MM                                   |                         |
|      | 72310337    | 6   | CONNECTING ROD BEARING<br>64,00MM                                   |                         |

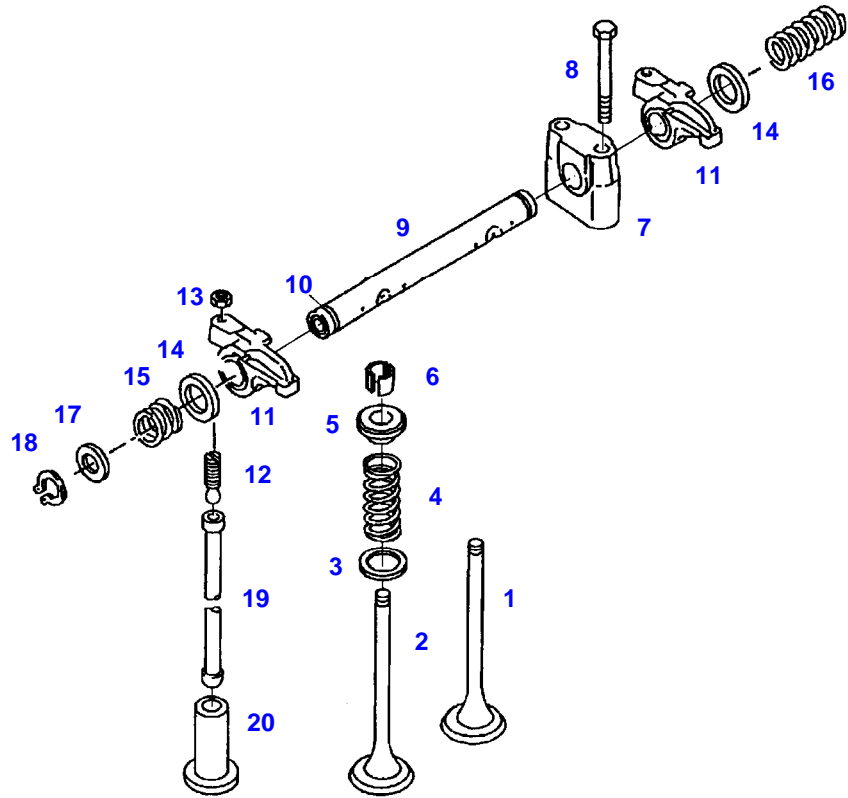
FAVORIT 926 (926/00101-00400 & 01001-03000)  
10151



010151

| Item | Part Number | Qty | Description<br>Comments                                | Technical Specification |
|------|-------------|-----|--|-------------------------|
| 1    | 72310911    | 1   | CAMSHAFT<br>><2  |                         |
| 2    | 72313859    | 1   | CYLINDER PIN   | DIN 7-8M6X18-ST50K      |
| 3    | 72312126    | 1   | FLANGE   |                         |
| 4    | 72315642    | 2   | HEXAGONAL HEAD BOLT                                    | DIN 933 M8 X 16-8.8A3L  |
| 5    | 72311788    | 2   | DISC   | DIN 125-8,4-ST.A3L      |
| 6    | 72416958    | 1   | CAM WHEEL<br>ENG.NO.<br>--> 162 9031 999 .... <><br><> |                         |
|      | 72316540    | 1   | CRANKSHAFT GEAR  |                         |
| 7    | 72315385    | 4   | HEX BOLT, WITH COLLAR                                  |                         |
| 8    | 72310408    | 1   | BOLT<br>><9,14   |                         |
| 9    | 72313847    | 1   | TENSIONING PIN   | ISO8750-8X10-ST         |
| 10   | 72315373    | 1   | SOCKET HEAD BOLT                                       |                         |
| 11   | 72317157    | 1   | INTERMEDIATE GEAR                                      |                         |
| 12   | 72317117    | 1   | THRUST WASHER  |                         |
| 13   | 72315776    | 2   | SOCKET HEAD BOLT                                       | DIN 6912 M8X30-8.8      |
| 14   | 72313846    | 1   | TENSIONING PIN   | ISO8750-5X10-ST         |

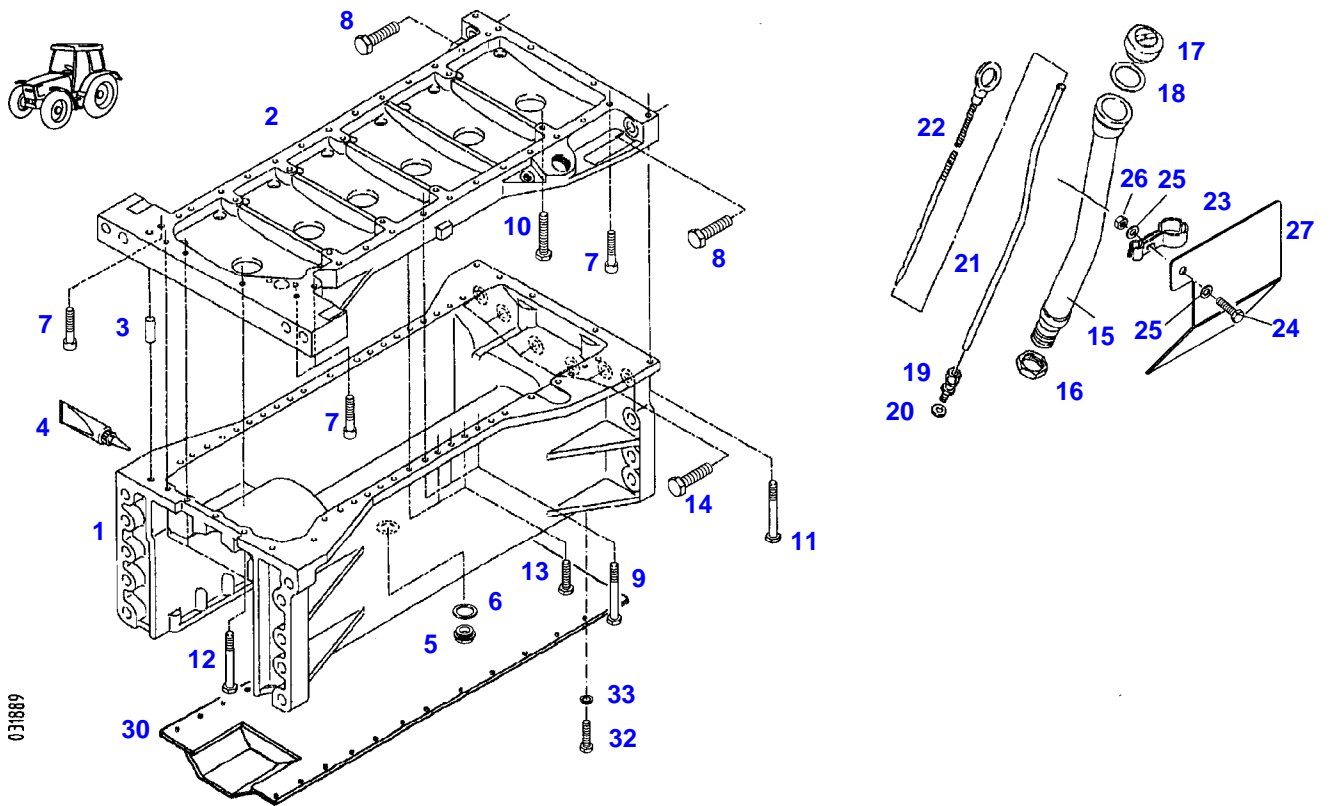
FAVORIT 926 (926/00101-00400 & 01001-03000)  
10157



010157

| Item | Part Number | Qty | Description<br>Comments              | Technical Specification |
|------|-------------|-----|--------------------------------------|-------------------------|
| 1    | 72317040    | 6   | INTAKE VALVE                         |                         |
| 2    | 72317039    | 6   | OUTLET VALVE                         |                         |
| 3    | 72311770    | 12  | DISC                                 |                         |
| 4    | 72426516    | 12  | VALVE SPRING                         |                         |
| 5    | 72314931    | 12  | VALVE SPRING RETAINER                |                         |
| 6    | 72311279    | 24  | VALVE SPRING KEY                     |                         |
| 7    | 72310123    | 6   | ROCKER ARM SUPPORT                   |                         |
| 8    | 72310402    | 12  | TORX SCREW<br>REPLACE SCREWS SETWISE |                         |
| 9    | 72310120    | 3   | ROCKER SHAFT<br>><10                 |                         |
| 10   | 72314700    | 6   | PLUG                                 |                         |
| 11   | 72604686    | 12  | ROCKER ARM                           |                         |
| 12   | 72315386    | 12  | PRESSURE SCREW                       |                         |
| 13   | 72313252    | 12  | NUT                                  |                         |
| 14   | 72311769    | 12  | DISC                                 |                         |
| 15   | 72316451    | 6   | COMPRESSION SPRING                   |                         |
| 16   | 72316450    | 3   | COMPRESSION SPRING                   |                         |
| 17   | 72317112    | 6   | MACHINE WASHER                       |                         |
| 18   | 72311061    | 6   | LOCK WASHER                          | DIN 471-20X1,2          |
| 19   | 72316921    | 12  | PUSH ROD                             |                         |
| 20   | 72316919    | 12  | VALVE TAPPET<br>20,00MM              |                         |
|      | 72316920    | 12  | VALVE TAPPET<br>20,25MM              |                         |

FAVORIT 926 (926/00101-00400 & 01001-03000)  
31889



031889

| Item | Part Number | Qty | Description<br>Comments  | Technical Specification     |
|------|-------------|-----|--|-----------------------------|
|      |             |     | <-- 926/0101 --> 926/0300<br><-- 926/1001 --> 926/1685<br><-- 926/1687 --> 926/1688<br><-- 926/1690 --> 926/1693 |                             |
| 1    | 72313548    | 1   | OIL PAN<br>><2+3<br><-- F824.201.310.060 <><br><>  |                             |
|      | 72315666    | 21  | HEXAGONAL HEAD BOLT  | DIN 933 M8X50-10.9 ZNPHR3F  |
|      | 72432324    | 1   | OIL PRESSURE LINE  |                             |
|      | 72315382    | 1   | SCREW  |                             |
|      | 72315656    | 3   | HEXAGONAL HEAD BOLT  | DIN 933-M8X30-10.9          |
|      | 72315540    | 2   | HEXAGONAL HEAD BOLT  | DIN 931 M8X100-10.9         |
|      | 72423359    | 2   | GASKETS  |                             |
|      | 72417047    | 1   | HOSE BARB  |                             |
| 2    |             |     | NOT AVAILABLE IN SINGLE PARTS  |                             |
| 3    | 72313723    | 2   | CENTERING PIN  |                             |
| 4    | 72602309    | 1   | SEALING COMPOUND   |                             |
| 5    | 72315802    | 1   | SCREW  | DIN 7604 AM22X1,5-ST        |
| 6    | 72315101    | 1   | SEALING WASHER   | DIN 7603 A22X27-CU          |
| 7    | 72315480    | 5   | SOCKET HEAD BOLT   | DIN 912-M8X50-10.9-ZNPHR3F  |
| 8    | 72315597    | 2   | HEXAGONAL HEAD BOLT  | DIN 931-M18X65-10.9-ZNPHR3F |
| 9    | 72315538    | 21  | HEXAGONAL HEAD BOLT  | DIN 931-M8X80-10.9-ZNPHR3F  |
| 10   | 72606337    | 8   | HEXAGONAL HEAD BOLT  | M8X60-10.9                  |
| 11   | 72315538    | 4   | HEXAGONAL HEAD BOLT  | DIN 931-M8X80-10.9-ZNPHR3F  |
| 12   | 72315538    | 3   | HEXAGONAL HEAD BOLT<br>ENG.NO.<br>--> 162 8588 999 ....  | DIN 931-M8X80-10.9-ZNPHR3F  |
|      | 72315538    | 2   | HEXAGONAL HEAD BOLT<br>ENG.NO.<br><-- 162 8589 000 ....  |                             |
| 13   | 72315656    | 23  | HEXAGONAL HEAD BOLT  | DIN 933-M8X30-10.9          |
| 14   | 72315739    | 6   | HEXAGONAL HEAD BOLT  | DIN 933 M16X60 GWA-10.9     |
| 15   | 72316292    | 1   | OIL FILLER NECK<br><-- 926/0101 --> 926/0300<br><-- 926/1001 --> 926/1263  |                             |
|      | 72316293    | 1   | OIL FILLER NECK<br><-- 926/0301 --> 926/0400<br><-- 926/1264   |                             |
| 16   | 72313251    | 1   | NUT  |                             |
| 17   | 72311395    | 1   | COVER<br>><18  |                             |
| 18   | 72312231    | 1   | SEAL   |                             |
| 19   | 72311313    | 1   | STRAIGHT THREADED CONNECTION   | DIN 2353-CL10-A-ST          |
| 20   | 72315095    | 1   | SEALING WASHER   | DIN 7603 A14X20-CU          |
| 21   | 72316953    | 1   | GUIDE TUBE<br><-- 926/0101 --> 926/0300<br><-- 926/1001 --> 926/1263   |                             |
|      | 72316957    | 1   | GUIDE TUBE<br><-- 926/0301 --> 926/0400<br><-- 926/1264  |                             |
| 22   | 72311667    | 1   | DIPSTICK   |                             |
| 23   | 72311224    | 1   | PIPE CLAMP   |                             |
| 24   | 72315651    | 1   | HEXAGONAL HEAD BOLT<br><-- 926/0101 --> 926/0300<br><-- 926/1001 --> 926/1263                                    | DIN 933 M8X22-8.8A3L        |
|      | 72315660    | 1   | HEXAGONAL HEAD BOLT<br><-- 926/0301 --> 926/0400<br><-- 926/1264   | DIN 933 M8X35-8.8A3L        |
| 25   | 72311788    | 2   | DISC   | DIN 125-8,4-ST.A3L          |
| 26   | 72313268    | 1   | NUT  | DIN 934 M8-8A3L             |
| 27   |             |     | NOT USED   |                             |



---

Fendt

FAVORIT 926 (926/00101-00400 & 01001-03000)

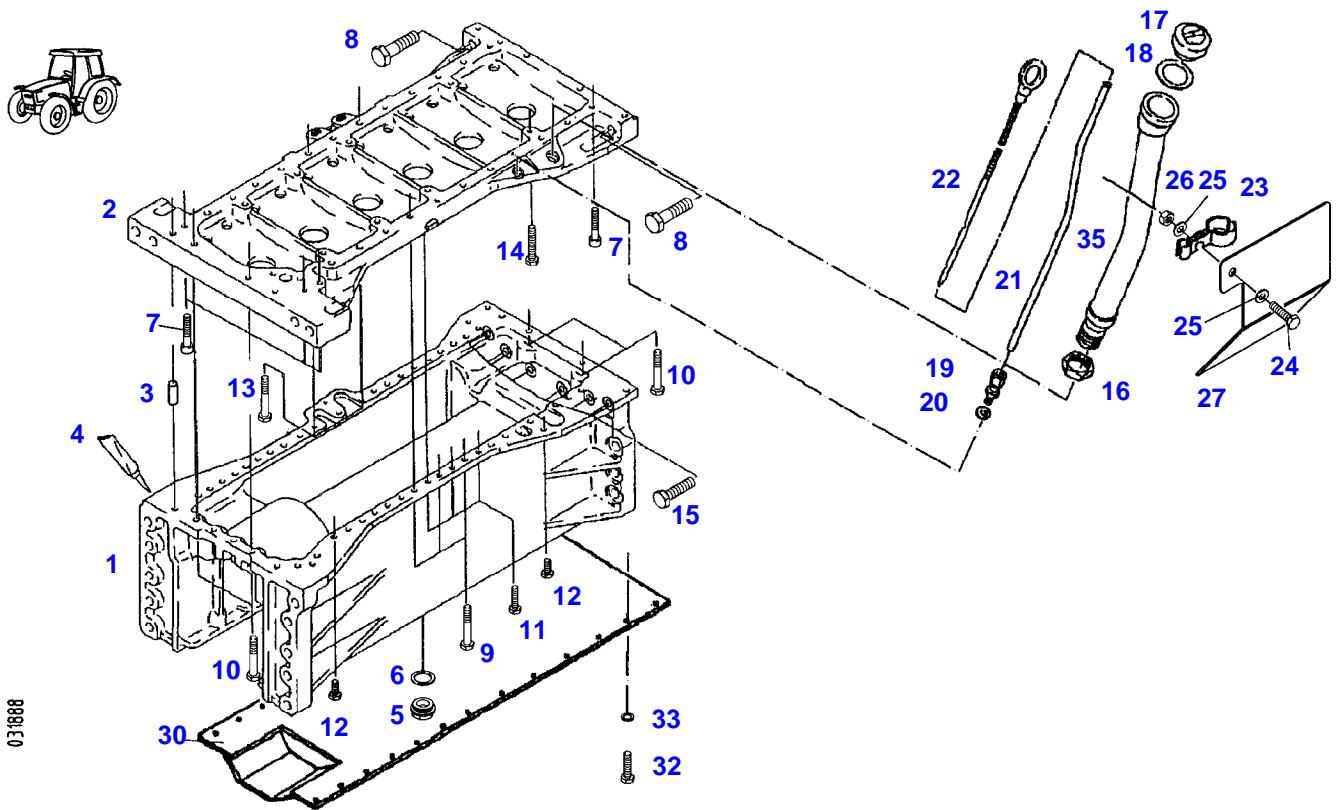
F926000

OIL PAN

Page01-0014

| Item | Part Number | Qty | Description<br>Comments | Technical Specification |
|------|-------------|-----|-------------------------|-------------------------|
| 30   | 72418244    | 1   | COVER PLATE             |                         |
| 32   | 72315688    | 25  | HEXAGONAL HEAD BOLT     | M10 X 35 CL10.9         |
| 33   | 72315054    | 25  | SPLIT WASHER            | FWN 65208-10-A3L        |

FAVORIT 926 (926/00101-00400 & 01001-03000)  
31888



Thank you so much for reading.  
Please click the “Buy Now!”  
button below to download the  
complete manual.



After you pay.

You can download the most  
perfect and complete manual in  
the world immediately.

Our support email:

[ebooklibonline@outlook.com](mailto:ebooklibonline@outlook.com)