

OPERATOR'S MANUAL

NO-TILL GRAIN DRILL

BD1307



FRONTIER
EQUIPMENT™

HB0500131 (12/3/08)

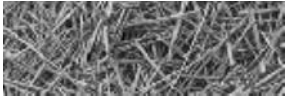


TABLE OF CONTENTS

Part 1: Operating Instructions	3
Introduction	2
Purpose	2
Section 1: Safety	3
1.1 Safety-alert symbols	3
1.2 Operator - personal equipment	5
1.3 Machine safety labels	6
1.4 Shielding	8
1.5 Personal equipment	8
1.6 Safety review	8
Section 2: Dealer Preparation	12
2.1 Drill Legume Box Attachment	12
2.2 Legume Hopper Shipping Kit (Optional)	14
Section 3: Introduction	15
3.1 Ordering Parts	15
3.2 Serial Number Decal	16
3.3 About your BD1307 Grain Drill	16
Section 4: Operating Instructions	17
4.1 Operating Instructions	17
4.2 Grain Drill Setup	18
4.3 Pressure Spring Adjustment	18
4.4 Press Wheel Adjustment	19
4.5 Frontier BD1307 Drill Opener	20
4.6 Feed Wheel Space Adjustment	21
4.7 Cleanout Slides	22
4.8 Calibration Pointer Adjustment	23
4.9 Setting and Checking Feed Rate	24
4.10 Checking Feed Rate	25
4.11 Drilling with the Grain Drill	31
4.12 Suggestions	32
4.13 Preparing for Storage	33
4.14 Removing from Storage	33
Section 5: Grass Seeding Reference	34
5.1 Grass Seeding Attachments	34
5.2 Legume Box Applications	35

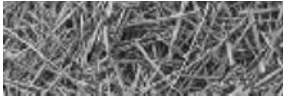


TABLE OF CONTENTS

5.3 Single Agitator Applications	35
5.4 Special Instructions for Warm Season Grasses	35
5.5 Pure Live Seed Calculations	36

Section 6: Lubrication 38

APPENDIX A: SPECIFICATIONS 41

Part 2: Parts Reference 43

MAIN FRAME ASSEMBLY	44
DRIVE ASSEMBLY	46
DRIVE WHEEL ASSEMBLY	48
TANK END DRIVE	50
RUN ASSEMBLY	52
TANK ASSEMBLY (DETAIL A)	54
TANK ASSEMBLY (DETAIL B)	56
TANK ASSEMBLY - BACK	58
SEED & FERTILIZER SETTING ASSEMBLY	60
SCRAPER ASSEMBLY	61
COULTER & DISK ASSEMBLY	62
PRESS WHEEL ASSEMBLY	63
HUB ASSEMBLY	64
HUB FORK ASSEMBLY	65
BALLAST BRACKET (OPTION)	66
HITCH	67
DRILL HYDRAULICS	67
SWIVEL HITCH	68
DECALS	70
DECAL LOCATIONS	72
LEGUME BOX OPTION	74
SEED INDEX ASSEMBLY LEGUME BOX (DETAIL C)	76
CUP ASSEMBLY LEGUME BOX (DETAIL D)	77
LEGUME DROP TUBE ASSEMBLY	78
LEGUME BOX MOUNTING BRACKET	80
ACRE COUNTER	81
LIGHT KIT & SLOW MOVING VEHICLE	82

NATIVE GRASS KIT

Parts Reference & Installation Instructions	85
NATIVE GRASS KIT OPTION - ADDITIONAL AGITATOR SHAFTS	86

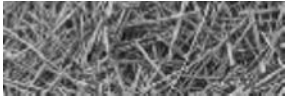


TABLE OF CONTENTS

NATIVE GRASS KIT - TANK END DRIVE ASSEMBLY 88
NATIVE GRASS KIT - SEED AND FERTILIZER SETTING ASSEMBLY 90
NATIVE GRASS KIT - DROP TUBE AND HOSE 91

NATIVE GRASS KIT FIELD INSTALLATION FOR SINGLE AND DOUBLE
AGITATORS 92

INSTALLING FEED SHAFT AGITATOR KITS 92
CHAIN ROUTING 94
NATIVE GRASS KIT - SINGLE AGITATOR MASTER PARTS LIST 95
NATIVE GRASS KIT - DOUBLE AGITATOR MASTER PARTS LIST 96
NOTES 97



Thank you so much for reading.
Please click the “Buy Now!”
button below to download the
complete manual.



After you pay.

You can download the most
perfect and complete manual in
the world immediately.

Our support email:

ebooklibonline@outlook.com