

PARTS MANUAL

CHALLENGER

**H13.00-16.00XM H10.00-
12.000XM-12EC
(F019)**

CUSTOMER EDITION

HYSTER

SECTIONS

1	FRAME
2	ENGINES
3	FUEL SYSTEM
4	ELECTRICAL SYSTEM
5	TRANSMISSION
6	DRIVE AXLE
7	STEERING SYSTEM
8	BRAKE SYSTEM
9	HYDRAULIC SYSTEM
10	MAST-TWO STAGE LIMITED FREE-LIFT
11	MAST-THREE STAGE FULL FREE-LIFT
12	EMPTY CONTAINER HANDLER
13	ATTACHMENTS
14	OPTIONS
15	NUMERICAL INDEX

TABLE OF CONTENTS

DESCRIPTION	PAGE
A	
ACCUMULATOR	8-16
PISTON TYPE	9-10
ACCUMULATOR CHARGE VALVE	8-12
AIR COMPRESSOR	
PERKINS	
SHEET 1 OF 2	2-34
SHEET 2 OF 2	2-36
AIR COMPRESSOR AND ATTACHING PARTS	
PERKINS	2-32
AIR CONDITIONING SYSTEM	
CUMMINS.....	1-32
PERKINS	1-30
AIR CROSSOVER CONNECTION	
CUMMINS.....	2-150
AIR DRYER AND ATTACHING PARTS	2-26
AIR DRYER ASSEMBLY	
SHEET 1 OF 2.....	2-28
SHEET 2 OF 2.....	2-30
AIR DUCT AND ACCESSORIES	
CAB.....	1-66
AIR FILTER	
WITHOUT ASPIRATED PRE-CLEANER	
CUMMINS	3-36
PERKINS.....	3-34
AIR HEATER STARTING AID	
CUMMINS.....	2-118
ALARM	14-18
ALTERNATOR AND MOUNTING	
CUMMINS.....	4-24
ALTERNATOR AND PULLEY	
PERKINS	4-22
ALTERNATOR BRACKET AND ATTACHING PARTS	
PERKINS	4-20
ARMREST	
PIVOT-UP	1-58
AUXILIARY DRIVE GEAR	
PERKINS	2-66
AUXILIARY PUMP COVER	
WET BRAKE	
CUMMINS.....	2-137
AUXILIARY PUMP DRIVE	
⇒S/N F019E01593B (CUMMINS), ⇒S/N F019E01601B (PERKINS)	5-34
S/N F019E01594B⇒ (CUMMINS), S/N F019E01602B⇒ (PERKINS)	5-36
AXLE HOUSING AND ATTACHING PARTS.....	6-10
B	
BELT TENSIONER	
CUMMINS.....	2-163
BLANKING PLATE AND PLUGS	
PERKINS	2-70
BLANKING PLUG, OIL FEED AND HOSES	

TABLE OF CONTENTS (Continued)

DESCRIPTION	PAGE
B (continued)	
PERKINS	2-68
BRAKE ASSEMBLY	
DRY BRAKE	8-20
WET BRAKE	8-18
BRAKE CHAMBER	8-22
BRAKE SYSTEM	
DRY	8-2
WET	8-6
BRAKE VALVE	
DRY BRAKE	8-26
WET BRAKE	8-24
C	
CAB AND ATTACHING PARTS	1-12
CAB AND TILT CYLINDER MOUNTING	1-20
CAB HARDWARE AND CONTROL COVER	1-60
CAB HEATER PLUMBING	
DRY BRAKE	
CUMMINS	2-146
CAB MOUNTED DRIVE LIGHTS	14-14
CAM FOLLOWER COVER	
CUMMINS	2-122
CAMSHAFT	
CUMMINS	2-110
CAMSHAFT AND ROCKER ASSEMBLY	
PERKINS	2-48
CARRIAGE	
FOUR, FIVE, AND SIX FUNCTION	10-26
THREE STAGE FULL FREE-LIFT	11-16
INDIVIDUAL FORK POSITIONER (FOUR FUNCTION)	10-28
THREE STAGE FULL FREE-LIFT	11-18
SIMULTANEOUS FORK POSITIONER	10-32
SIMULTANEOUS FORK POSITIONER (THREE FUNCTION)	
THREE STAGE FULL FREE-LIFT	11-20
THREE FUNCTION	10-24
THREE STAGE FULL FREE-LIFT	11-14
CHARGE PUMP AND FILTER ASSEMBLY	5-18
CONDENSER	1-44
CONTAINER ATTACHMENT INSTALLATION	12-6
CONTROL LEVER	9-24
CONTROL PANEL	
AIR CONDITIONER	4-12
HEATER	4-10
CONTROL VALVE	9-18
CONTROL VALVE ASSEMBLY	5-12
CONTROL VALVE MOUNT	5-16
COOLING	
CUMMINS	2-16
PERKINS	2-12

TABLE OF CONTENTS (Continued)

DESCRIPTION	PAGE
C (continued)	
COUNTERWEIGHT	1-8
CRANKCASE BREATHER	
CUMMINS.....	2-120
CRANKSHAFT AND MAIN BEARINGS	
CUMMINS.....	2-104
PERKINS	2-44
CYLINDER BLOCK	
CUMMINS.....	2-100
PERKINS	2-38
CYLINDER HEAD	
CUMMINS.....	2-102
PERKINS	2-40
CYLINDER HEAD COVER	
PERKINS	2-42
D	
DASH DISPLAY	1-68
DC-DC CONVERTER AND ATTACHING PARTS.....	4-14
DIFFERENTIAL AND CARRIER	
DRY BRAKE	6-6
WET BRAKE.....	6-2
DIRECTIONAL CONTROL VALVE	13-34
DRIVE GEAR	5-32
DRIVE PLATE.....	5-50
E	
ELECTRIC PUMP	1-28
ELECTRICAL SYSTEM	
CUMMINS.....	4-6
PERKINS	4-2
SERIES 553	
250 MM (10 IN.) SIDE-SHIFT	12-42
SERIES 555.....	12-44
SERIES 558	
250 MM (10 IN.) SIDE-SHIFT	12-46
ELECTRONIC CONTROL MODULE AND MOUNTING	
PERKINS	2-88
ELECTRONIC LEVER ASSEMBLY	
THREE, FOUR, FIVE, AND SIX FUNCTION.....	9-28
WITH CLAMP ATTACHMENT.....	9-30
END BEAM ASSEMBLY	
SERIES 553	
250 MM (10 IN.) SIDE-SHIFT	12-14
SERIES 555.....	12-16
SERIES 558	
250 MM (10 IN.) SIDE-SHIFT	12-18
ENGINE ASSEMBLY	
CUMMINS.....	2-98
PERKINS	2-6

TABLE OF CONTENTS (Continued)

DESCRIPTION	PAGE
E (continued)	
ENGINE BLOCK HEATER	
CUMMINS.....	2-24
PERKINS.....	2-22
ENGINE CONTROL SYSTEM	
CUMMINS.....	2-114
ENGINE LIFTING EYES	
PERKINS.....	2-86
ENGINE MOUNT	
CUMMINS.....	2-20
PERKINS.....	2-19
ENGINE OIL COOLER	
CUMMINS.....	2-140
EXHAUST	
CUMMINS.....	2-10
PERKINS.....	2-8
EXHAUST MANIFOLD	
CUMMINS.....	2-149
EXTENSION CYLINDER AND ATTACHING PARTS	
SERIES 553, 558	
250 MM (10 IN.) SIDE-SHIFT	12-22
SERIES 555.....	12-26
F	
FAN DRIVE	
CUMMINS.....	2-130
FAN DRIVE AND PULLEY	
PERKINS.....	2-64
FLOOR PLATES AND COVERS.....	1-10
FLYWHEEL	
CUMMINS.....	2-134
FLYWHEEL AND STARTER RING	
PERKINS.....	2-96
FLYWHEEL HOUSING	
CUMMINS.....	2-132
PERKINS.....	2-94
FORK.....	10-38
FORK POSITIONER CYLINDER	10-36
FORWARD CLUTCH.....	5-30
FREE-LIFT CYLINDER	
THREE STAGE FULL FREE-LIFT	11-10
FRONT DRIVE PULLEY	
PERKINS.....	2-62
FRONT GEAR COVER	
CUMMINS.....	2-135
FRONT GEAR HOUSING	
CUMMINS.....	2-116
FRONT GEAR TRAIN	
WET BRAKE	
CUMMINS.....	2-126

TABLE OF CONTENTS (Continued)

DESCRIPTION	PAGE
F (continued)	
FRONT, BRAKE AND BACK-UP LIGHTS	14-8
FUEL FILTER	
CUMMINS.....	3-22
FUEL FILTER ASSEMBLY	
PERKINS	3-18
FUEL FILTER PLUMBING	
CUMMINS.....	3-24
FUEL INJECTION PUMP	
CUMMINS.....	3-26
FUEL INJECTION PUMP AND GEAR	
PERKINS	3-8
FUEL INJECTION SUPPLY AND RETURN LINES	
PERKINS	3-12
FUEL INJECTOR PLUMBING	
CUMMINS.....	3-32
FUEL PLUMBING	
CUMMINS.....	3-30
FUEL PUMP MOUNTING	
CUMMINS.....	3-27
FUEL STRAINER	
CUMMINS.....	3-29
FUEL SYSTEM	
CUMMINS.....	3-4
PERKINS	3-2
FUEL TRANSFER PUMP	
CUMMINS.....	3-28
G	
GEAR CLUTCH INSTALLATION	5-38
GENERAL TRUCK	1-2
H	
HAND HOLE COVER	
DRY BRAKE	
CUMMINS	2-148
WET BRAKE	
CUMMINS	2-147
HAND PUMP	
CAB TILT.....	1-26
HEADER HOSE	
EMPTY CONATAINER HANDLER.....	12-2
S/N F019E01682B⇒	10-44
THREE STAGE FULL FREE-LIFT	11-12
TWO STAGE LIMITED FREE-LIFT	
⇒S/N F019E01681B.....	10-40
HEATER AND AIR CONDITIONER ASSEMBLY.....	1-42
HEATER AND AIR CONDITIONER ATTACHMENT	1-38
HEATER ARRANGEMENT	1-34
HEATER ASSEMBLY	1-40

TABLE OF CONTENTS (Continued)

DESCRIPTION	PAGE
H (continued)	
HEATER HOSE ARRANGEMENT	
CUMMINS.....	1-36
HIGH PRESSURE FUEL PIPES	
PERKINS	3-10
HOOD.....	1-4
HUB AND SHAFT ASSEMBLY	
DRY BRAKE	6-14
WET BRAKE.....	6-12
HYDRAULIC CONTROL AND TWISTLOCK	
EMPTY CONTAINER HANDLER.....	1-62
HYDRAULIC PUMP.....	9-16
WET BRAKE	
PERKINS.....	8-10
HYDRAULIC SUPPLY AND RETURN.....	9-2
HYDRAULIC SYSTEM	
SERIES 553	
250 MM (10 IN.) SIDE-SHIFT	12-36
SERIES 555.....	12-38
SERIES 558	
250 MM (10 IN.) SIDE-SHIFT	12-40
HYDRAULIC TANK AND ATTACHING PARTS.....	9-6
HYDRAULIC VALVE AND ATTACHING PARTS.....	9-12
I	
IDLER GEAR	
PERKINS	2-60
IDLER SHAFT	
REVERSE.....	5-28
INCHING PEDAL AND ACCESSORIES	
CAB.....	1-64
INJECTOR	
CUMMINS.....	3-6
INNER MAST	
⇒S/N F019E01681B	10-6
S/N F019E01682B⇒	10-8
J	
JOYSTICK CONTROL.....	9-22
L	
LABELS.....	1-70
LIFT	
⇒S/N F019E01681B	10-10
S/N F019E01682B⇒	10-14
LIFT ACCUMULATOR AND ATTACHING PARTS	9-8
LIFT CYLINDER	
EMPTY CONATAINER HANDLER.....	10-22
NON-EC	
⇒S/N F019E01681B.....	10-18

TABLE OF CONTENTS (Continued)

DESCRIPTION	PAGE
L (continued)	
S/N F019E01682B⇒.....	10-20
LIFT PUMP AND FUEL FILTER LINES	
PERKINS.....	3-14
LIFT PUMP ASSEMBLY	
PERKINS.....	3-16
LIFTING BRACKET	
CUMMINS.....	2-136
LIFTING EYES.....	14-16
LOW CLUTCH.....	5-24
M	
MAIN FRAME	
SERIES 553, 555, 558	
250 MM (10 IN.) SIDE-SHIFT.....	12-10
SERIES 555	
600 MM (23.6 IN.) SIDE-SHIFT.....	12-12
MAIN LIFT CYLINDER	
THREE STAGE FULL FREE-LIFT.....	11-9
MANIFOLDS	
PERKINS.....	2-58
MAST AND REAR WORK LIGHTS.....	14-6
MAST ASSEMBLY	
THREE STAGE FULL FREE-LIFT	
SHEET 1 OF 3.....	11-2
SHEET 2 OF 3.....	11-4
SHEET 3 OF 3.....	11-6
MAST INSTALLATION.....	9-36
MONOTROL PEDAL.....	3-42
O	
OIL COOLER.....	8-14
OIL COOLER AND CONNECTIONS	
PERKINS.....	2-76
OIL FILTER	
CUMMINS.....	2-144
OIL FILTER AND ATTACHING PARTS	
PERKINS.....	2-74
OIL LEVEL GAUGE	
CUMMINS.....	2-142
OIL PAN	
CUMMINS.....	2-138
OIL PUMP	
CUMMINS.....	2-145
OIL PUMP AND DELIVERY HOUSING	
PERKINS.....	2-72
OIL SUMP	
PERKINS.....	2-56
OUTER MAST	
⇒S/N F019E01681B.....	10-2

TABLE OF CONTENTS (Continued)

DESCRIPTION	PAGE
O (continued)	
S/N F019E01682B⇒	10-4
OUTPUT FLANGE	5-52
OUTPUT SHAFT	5-20
P	
PARK BRAKE	
WET BRAKE	6-16
PICK-UP SENSORS	
PERKINS	2-92
PILOT VALVE	9-20
PISTON AND CONNECTING ROD	
CUMMINS	2-108
PERKINS	2-46
R	
REVERSE AND SECOND CLUTCH	5-26
ROCKER LEVERS	
CUMMINS	2-112
ROTATING BEACON	14-12
S	
SEAT ASSEMBLY	
AIR	1-46
MECHANICAL	1-48
SIDE-SHIFT CARRIAGE	
FOUR, FIVE, AND SIX FUNCTION	
THREE STAGE FULL FREE-LIFT	13-18
TWO STAGE LIMITED FREE-LIFT	13-4
INDIVIDUAL FORK POSITIONER (FIVE FUNCTION)	
THREE STAGE FULL FREE-LIFT	13-22
TWO STAGE LIMITED FREE-LIFT	13-8
SIMULTANEOUS FORK POSITIONER (FOUR FUNCTION)	
THREE STAGE FULL FREE-LIFT	13-26
TWO STAGE LIMITED FREE-LIFT	13-12
THREE FUNCTION	
THREE STAGE FULL FREE-LIFT	13-16
TWO STAGE LIMITED FREE-LIFT	13-2
SIDE-SHIFT CYLINDER	
SERIES 553, 555	
250 MM (10 IN.) SIDE-SHIFT	12-28
SERIES 555	
600 MM (23.6 IN.) SIDE-SHIFT	12-29
SERIES 558	
250 MM (10 IN.) SIDE-SHIFT	12-30
THREE STAGE FULL FREE-LIFT	13-32
TWO STAGE LIMITED FREE-LIFT	13-30
STARTER MOTOR	
CUMMINS	4-18
PERKINS	4-16

TABLE OF CONTENTS (Continued)

DESCRIPTION	PAGE
S (continued)	
STEEL DOOR	
LEFT HAND.....	1-18
RIGHT HAND.....	1-16
STEERING AXLE.....	7-8
STEERING COLUMN.....	7-4
STEERING COLUMN ASSEMBLY.....	7-6
STEERING CYLINDER.....	7-12
STEERING SYSTEM.....	7-2
T	
THERMOSTAT	
CUMMINS.....	2-128
THERMOSTAT AND WATER OUTLET HOUSING	
PERKINS.....	2-78
THERMOSTAT HOUSING	
CUMMINS.....	2-152
THIRD CLUTCH.....	5-22
THROTTLE PEDAL LINKAGE	
FORWARD AND REVERSE LEVER.....	3-40
MONOTROL PEDAL.....	3-38
TILT CYLINDER.....	9-34
CAB.....	1-24
TILT CYLINDER AND ATTACHING PARTS.....	9-32
TIMING CASE	
PERKINS.....	2-50
TIMING COVER	
PERKINS.....	2-52
TIMING GEAR	
PERKINS.....	2-54
TIRE AND WHEEL	
11.00 X 20	
14 PLY.....	14-2
12.00 X 20	
18 PLY.....	14-3
SOLID.....	14-4
TORQUE CONVERTER ASSEMBLY	
CUMMINS	
⇒S/N F019E01593B.....	5-44
S/N F019E01594B⇒.....	5-46
⇒S/N F019E01601B.....	5-40
S/N F019E01602B⇒.....	5-42
TORQUE CONVERTER HOUSING AND ATTACHING PARTS.....	5-6
TRAINING SEAT.....	1-54
TRANSMISSION CASE	
⇒S/N F019E01593B (CUMMINS), ⇒S/N F019E01601B (PERKINS).....	5-8
S/N F019E01594B⇒ (CUMMINS), S/N F019E01602B⇒ (PERKINS).....	5-10
TRANSMISSION MOUNT AND ATTACHING PARTS	
CUMMINS.....	5-4
PERKINS.....	5-2

TABLE OF CONTENTS (Continued)

DESCRIPTION	PAGE
T (continued)	
TURBINE SHAFT AND STATOR SUPPORT	5-48
TURBO DRAIN PIPE AND BLANKING PLATE	
PERKINS	2-84
TURBOCHARGER	
CUMMINS.....	2-153
TURBOCHARGER AND ATTACHING PARTS	
PERKINS	2-82
TURBOCHARGER OIL PLUMBING	
CUMMINS.....	2-156
TWIST LOCK CYLINDER	
SERIES 558	
250 MM (10 IN.) SIDE-SHIFT	12-31
V	
VALVE ASSEMBLY	
SERIES 553, 555, 558	
END BEAM.....	12-34
SIDE-SHIFT	12-32
VALVE COVER	
CUMMINS.....	2-158
VALVE TAPPET	
CUMMINS.....	2-106
VIBRATION DAMPER	
CUMMINS.....	2-124
W	
WATER INLET CONNECTION	
CUMMINS.....	2-160
WATER PUMP	
CUMMINS.....	2-162
PERKINS	2-80
WATER SEPERATOR	
PERKINS	3-20
WEAR PADS	
SERIES 553, 555, 558.....	12-8
WINDOW WASHER AND ARMREST ASSEMBLY	1-56
WIRE HARNESS	
ARMREST	
WITH CLOSED CAB	4-34
WITH OPEN CAB.....	4-36
CAB ACCESSORIES.....	4-40
CAB TILT.....	4-38
CLOSED CAB.....	4-28
ECH - CAB TO MAST	4-46
ELECTRONIC CONTROL MODULE	
CUMMINS	4-26
FRONT END EQUIPMENT	
ECH-4.....	4-48
OPEN CAB	4-30

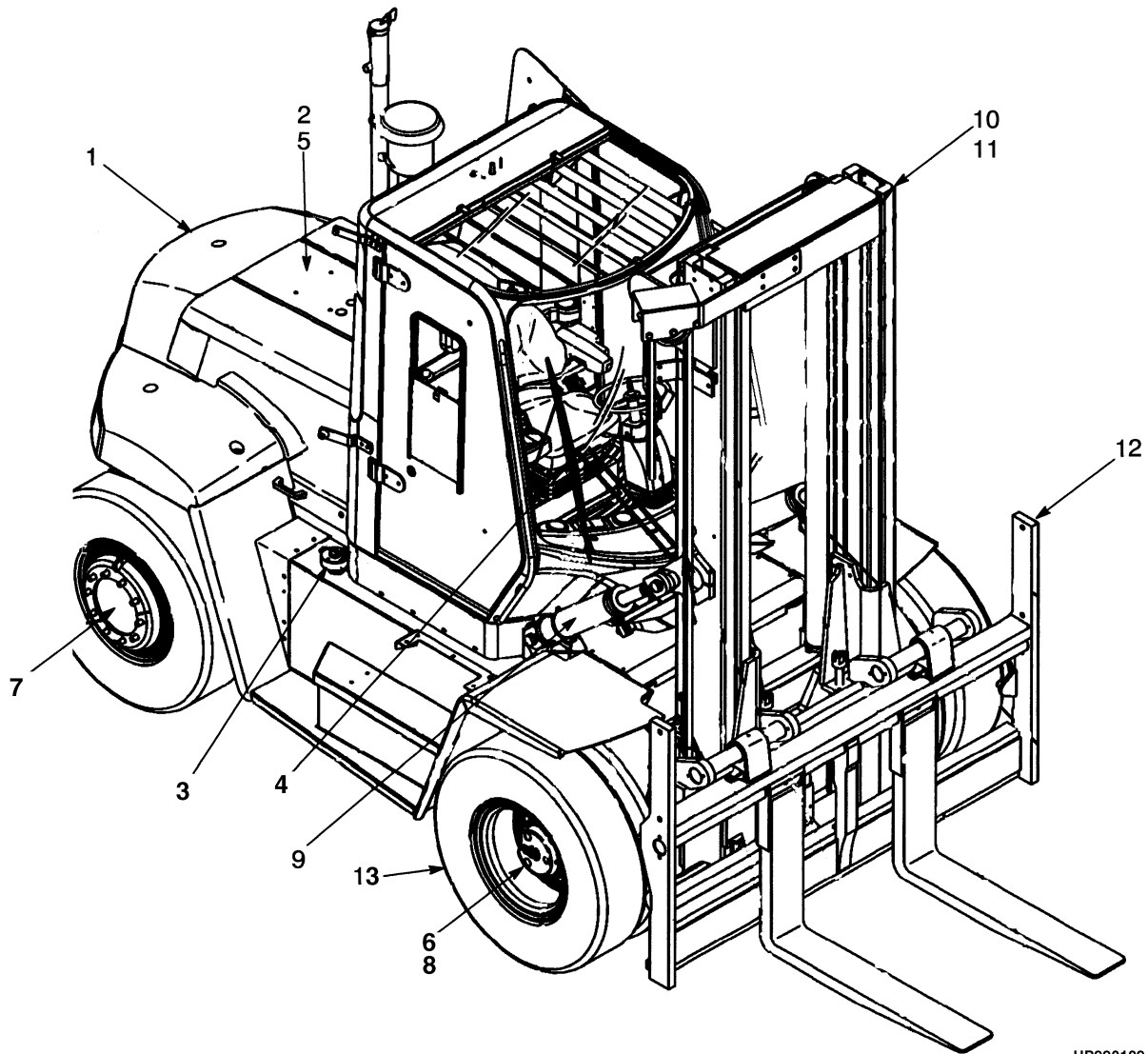
TABLE OF CONTENTS (Continued)

DESCRIPTION	PAGE
W (continued)	
REAR WIPER	4-32
STEERING COLUMN	4-42
TWO STAGE LIMITED FREE-LIFT	4-44
WIRING LOOMS	
PERKINS	2-90

**SECTION 1
FRAME**

DESCRIPTION	PAGE
AIR CONDITIONING SYSTEM	
CUMMINS.....	1-32
PERKINS	1-30
AIR DUCT AND ACCESSORIES	
CAB.....	1-66
ARMREST	
PIVOT-UP	1-58
CAB AND ATTACHING PARTS	1-12
CAB AND TILT CYLINDER MOUNTING.....	1-20
CAB HARDWARE AND CONTROL COVER.....	1-60
CONDENSER.....	1-44
COUNTERWEIGHT	1-8
DASH DISPLAY	1-68
ELECTRIC PUMP	1-28
FLOOR PLATES AND COVERS	1-10
GENERAL TRUCK	1-2
HAND PUMP	
CAB TILT.....	1-26
HEATER AND AIR CONDITIONER ASSEMBLY.....	1-42
HEATER AND AIR CONDITIONER ATTACHMENT	1-38
HEATER ARRANGEMENT	1-34
HEATER ASSEMBLY	1-40
HEATER HOSE ARRANGEMENT	
CUMMINS.....	1-36
HOOD.....	1-4
HYDRAULIC CONTROL AND TWISTLOCK	
EMPTY CONTAINER HANDLER.....	1-62
INCHING PEDAL AND ACCESSORIES	
CAB.....	1-64
LABELS.....	1-70
SEAT ASSEMBLY	
AIR.....	1-46
MECHANICAL	1-48
STEEL DOOR	
LEFT HAND.....	1-18
RIGHT HAND.....	1-16
TILT CYLINDER	
CAB.....	1-24
TRAINING SEAT	1-54
WINDOW WASHER AND ARMREST ASSEMBLY	1-56

GENERAL TRUCK (Figure 1-1)

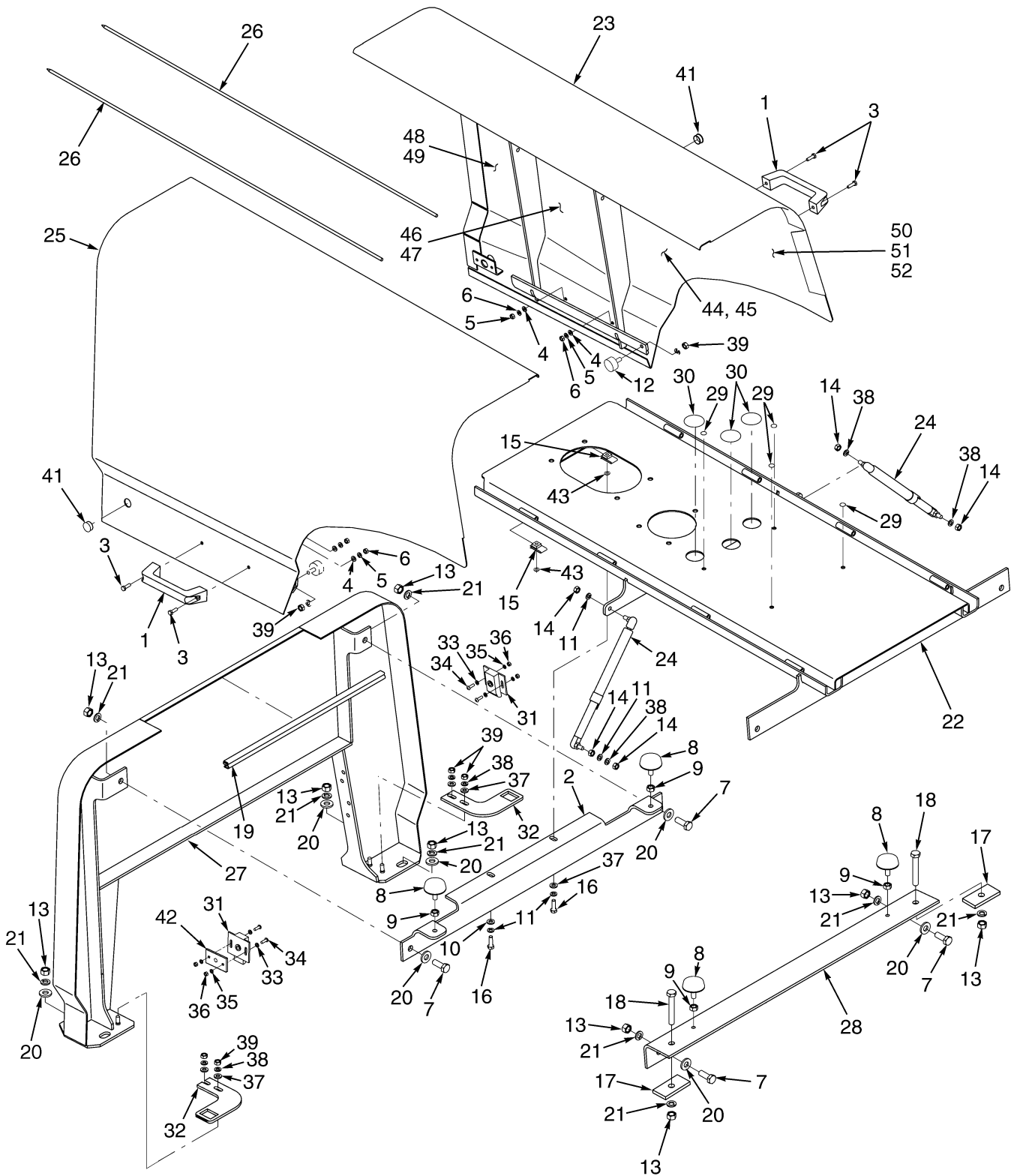


HP990129

GENERAL TRUCK

ITEM	PART NO.	DESCRIPTION	QTY
1	Frame (☞ Figure 1-2)	1
2	Engine Assembly (☞ Figure 2-1)	1
3	Fuel System (☞ Figure 3-1)	1
4	Electrical System (☞ Figure 4-1)	1
5	Transmission (☞ Figure 5-1)	1
6	Drive Axle (☞ Figure 6-1)	1
7	Steering System (☞ Figure 7-1)	1
8	Brake System (☞ Figure 8-1)	1
9	Hydraulic System (☞ Figure 9-1)	1
10	Mast-Two Stage Limited Free-Lift (☞ Figure 10-1)	1
11	Empty Container Attachments (☞ Figure 12-2)	1
12	Attachments (☞ Figure 13-1)	1
13	Options (☞ Figure 14-1)	1
14	Numerical Index.....	1

HOOD (Figure 1-2)



BP120122

HOOD

ITEM	PART NO.	DESCRIPTION	QTY
1	362030	Handle	2
2	1477508	Bracket.....	1
3	292501	Capscrew.....	4
4	320156	Washer	4
5	292680	Lockwasher.....	4
6	136687	Nut	4
7	292528	Capscrew.....	4
8	1479870	Screw (Stop).....	4
9	136692	Nut	4
10	320157	Washer	2
11	292681	Lockwasher.....	4
12	1489092	Screw (Stop).....	2
13	216877	Nut	10
14	239503	Nut	4
15	376397	Nut	2
16	18498	Capscrew.....	2
17	1479871	Washer	2
18	292535	Capscrew.....	AR
19	300088	Seal (Door)	8
20	320162	Washer	8
21	292683	Lockwasher.....	10
22	1554208	Channel	1
23	1476910	Hood (RH)	1
24	1385584	Gas Spring.....	2
25	1476911	Hood (LH).....	1
26	1478959	Rod	2
27	1489401	Support.....	1
28	1477512	Bracket.....	1
29	1494868	Plug (Without Air Conditioner)	4
30	1494869	Plug (Without Air Conditioner)	3
31	1382332	Latch	2
32	1494480	Bracket.....	2
33	320155	Washer	4
34	296155	Capscrew.....	4
35	292679	Lockwasher.....	4
36	292668	Nut	4
37	320160	Washer	4
38	292682	Lockwasher.....	4
39	136692	Nut	4
40	a 1382766	Wrench (Hood Latch)	1
41	309666	Plug	2
42	1494642	Shim	AR
42	1494643	Shim	AR
42	1494645	Shim	AR
43	320158	Washer	AR
44	1587730	Sound Liner (LH) (EEC)	1
45	1587731	Sound Liner (RH) (EEC).....	1
46	1587727	Sound Liner (LH) (EEC)	1
47	1587726	Sound Liner (RH) (EEC).....	1
48	1587734	Sound Liner (LH) (EEC)	1
49	1587735	Sound Liner (RH) (EEC).....	1

HOOD

ITEM	PART NO.	DESCRIPTION	QTY
50	1498373	Plate (EEC).....	28
51	136985	Capscrew (EEC).....	28
52	1593327	Spacer (EEC)	28

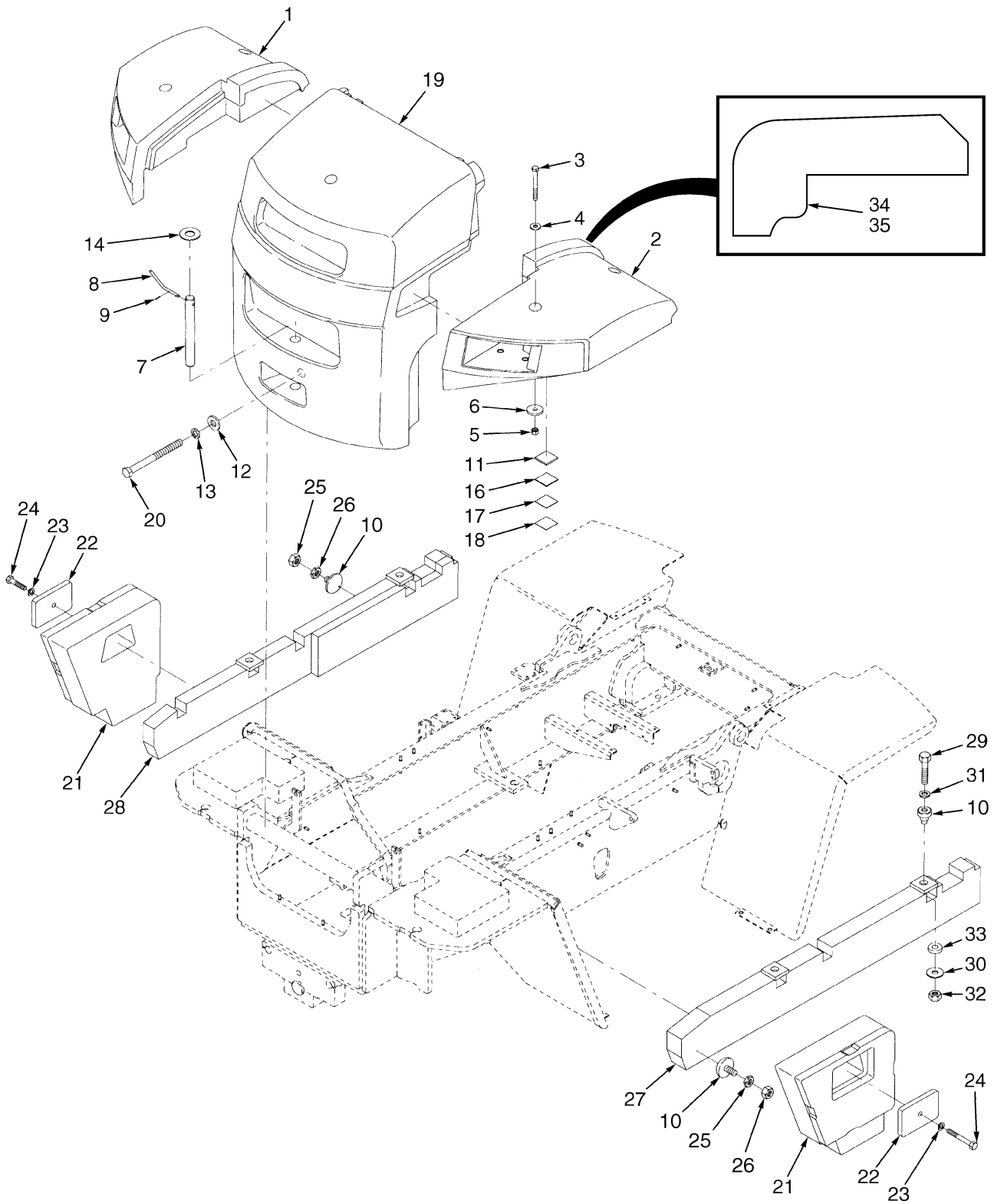
FOOTNOTES:

a Not Illustrated

Hyster

NOTES

COUNTERWEIGHT (Figure 1-3)

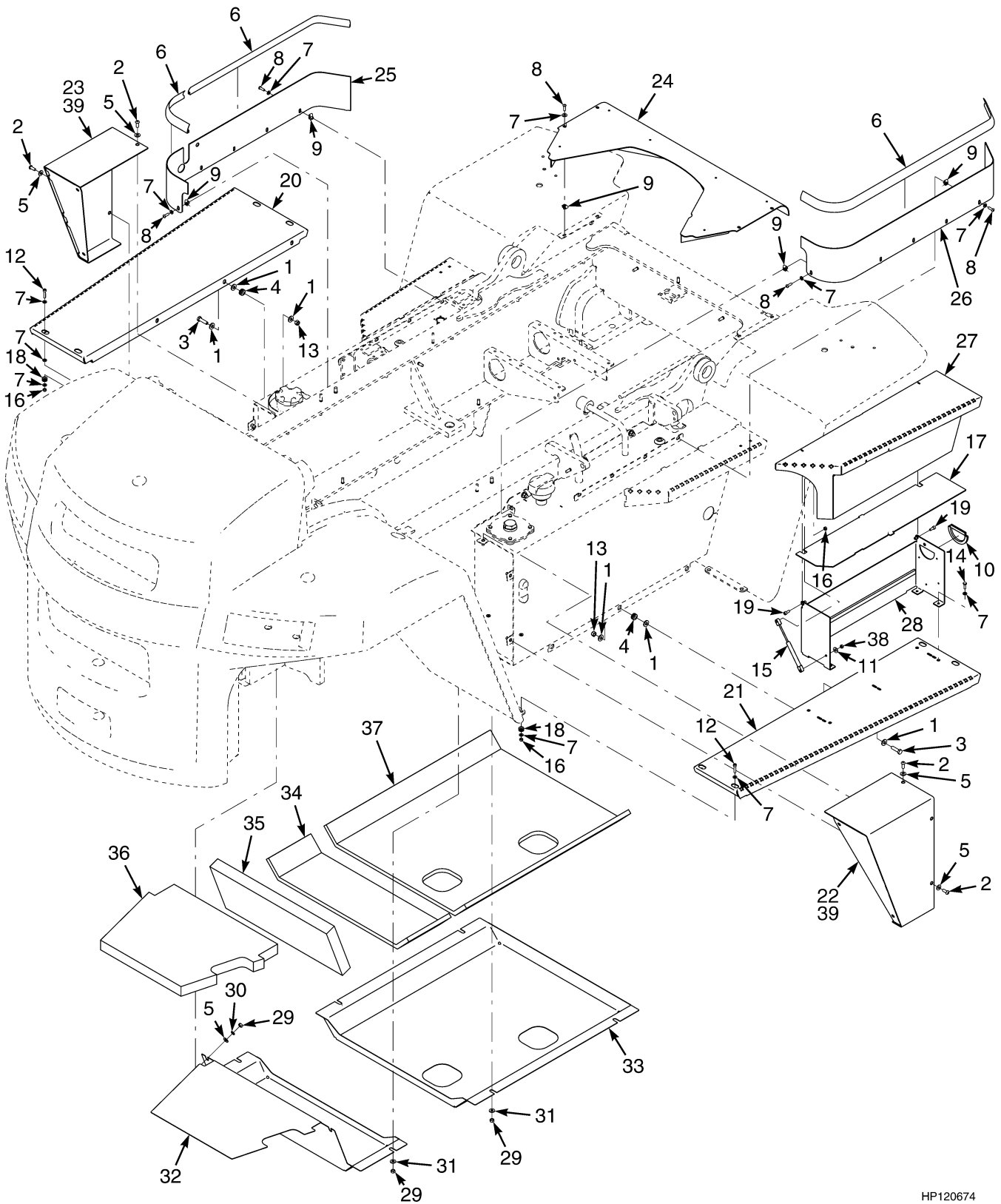


HP120578

COUNTERWEIGHT**KEY:****A: H13.00XM-14.00XM/H10.00-EC****B: H16.00XM/12.00-EC****C: H12.00-EC**

ITEM	PART NO.	DESCRIPTION	QTY		
			A	B	C
1	2038857	Fender (LH)	1	1	1
2	2038858	Fender (RH)	1	1	1
3	292597	Capscrew	4	4	4
4	1475872	Washer	4	4	4
5	316829	Nut	4	4	4
6	1301086	Washer	4	4	4
7	1467696	Tow Pin	1	1	1
8	1495368	Grip	1	1	1
9	302440	Pin	1	1	1
10	816231	Stop	4
11	1475214	Shim	AR	AR	AR
12	221786	Washer	1	1	1
13	15170	Lockwasher	1	1	1
14	15189	Washer	1	1	1
15	280472	Sealant	AR	AR	AR
16	1475211	Shim	AR	AR	AR
17	1475212	Shim	AR	AR	AR
18	1475213	Shim	AR	AR	AR
19	1467625	Counterweight	1
19	1467626	Counterweight	1	1
20	1453469	Capscrew	1
20	1453470	Capscrew	1	1
21	2045338	Counterweight (RH)	1	1	1
21	2045336	Counterweight (LH)	1	1	1
22	1485676	Plate	2	2	2
23	292689	Lockwasher	2	2	2
24	292612	Capscrew (127 mm)	2	2	2
25	216877	Nut	4
26	296130	Nut	4
27	816136	Counterweight (RH)	1
28	816137	Counterweight (LH)	1
29	293696	Capscrew	4
30	816138	Washer	4
31	1331575	Washer	4
32	316828	Nut	4
33	1373270	Isolator	4
34	1532632	Liner (LH)	1	1	1
35	1532633	Liner (RH)	1	1	1

FLOOR PLATES AND COVERS (Figure 1-4)



HP120674

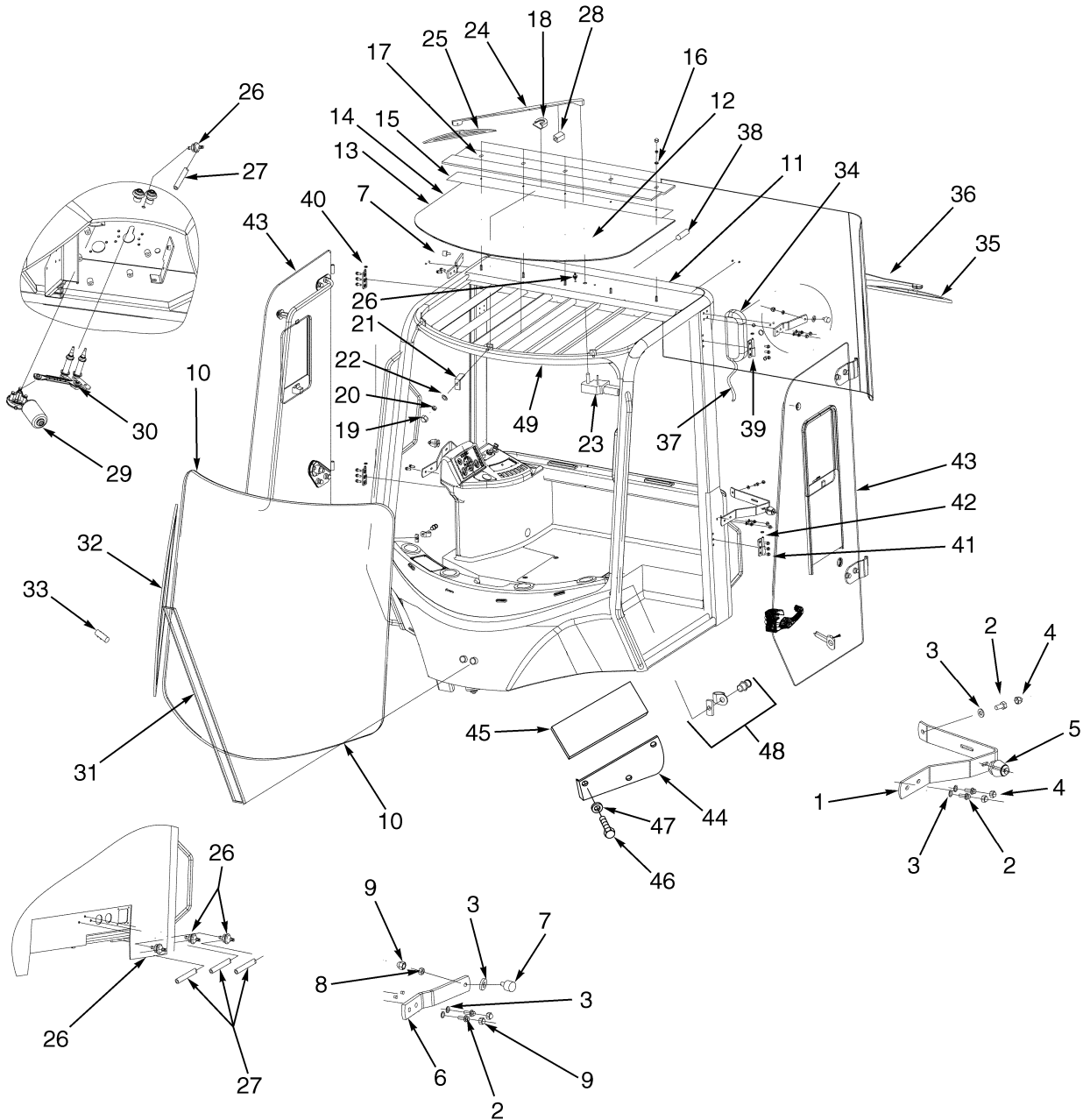
FLOOR PLATES AND COVERS

ITEM	PART NO.	DESCRIPTION	QTY
1	320162	Washer	18
2	296173	Capscrew.....	6
3	287837	Capscrew.....	6
4	216735	Grommet.....	6
5	320160	Washer	6
6	1491360	Seal	AR
7	320158	Washer	42
8	296167	Capscrew.....	14
9	1480237	Clip Nut.....	14
10	325983	Trim	AR
11	292681	Lockwasher.....	2
12	296012	Capscrew.....	8
13	302402	Nut	6
14	136749	Capscrew.....	4
15	1532341	Gas Spring.....	1
16	302400	Locknut	10
17	2071326	Cover	1
18	91946	Grommet.....	8
19	1529665	Capscrew.....	2
20	1529664	Running Board (LH).....	1
21	1529663	Running Board (RH)	1
22	1532449	Extension (LH)	1
23	1532447	Extension (RH)	1
24	1485265	Cover	1
25	1485263	Panel (LH).....	1
26	1485264	Panel (RH)	1
27	1529751	Cover (Battery Box)	1
28	1532202	Battery Box	1
29	a 136692	Nut	8
30	a 292682	Lockwasher.....	8
31	a 320160	Washer	8
32	a 1515432	Cover (Rear)	1
33	a 1562201	Cover (Bottom)	1
34	a 1562209	Liner.....	1
35	a 1562210	Liner.....	1
36	a 1562212	Liner.....	1
37	a 1562205	Liner.....	1
38	329069	Nut	2
39	288762	Tape.....	AR

FOOTNOTES:

a H13.00XM-6, H14.00XM-6, H16.00XM-6

CAB AND ATTACHING PARTS (Figure 1-5)



HP120624

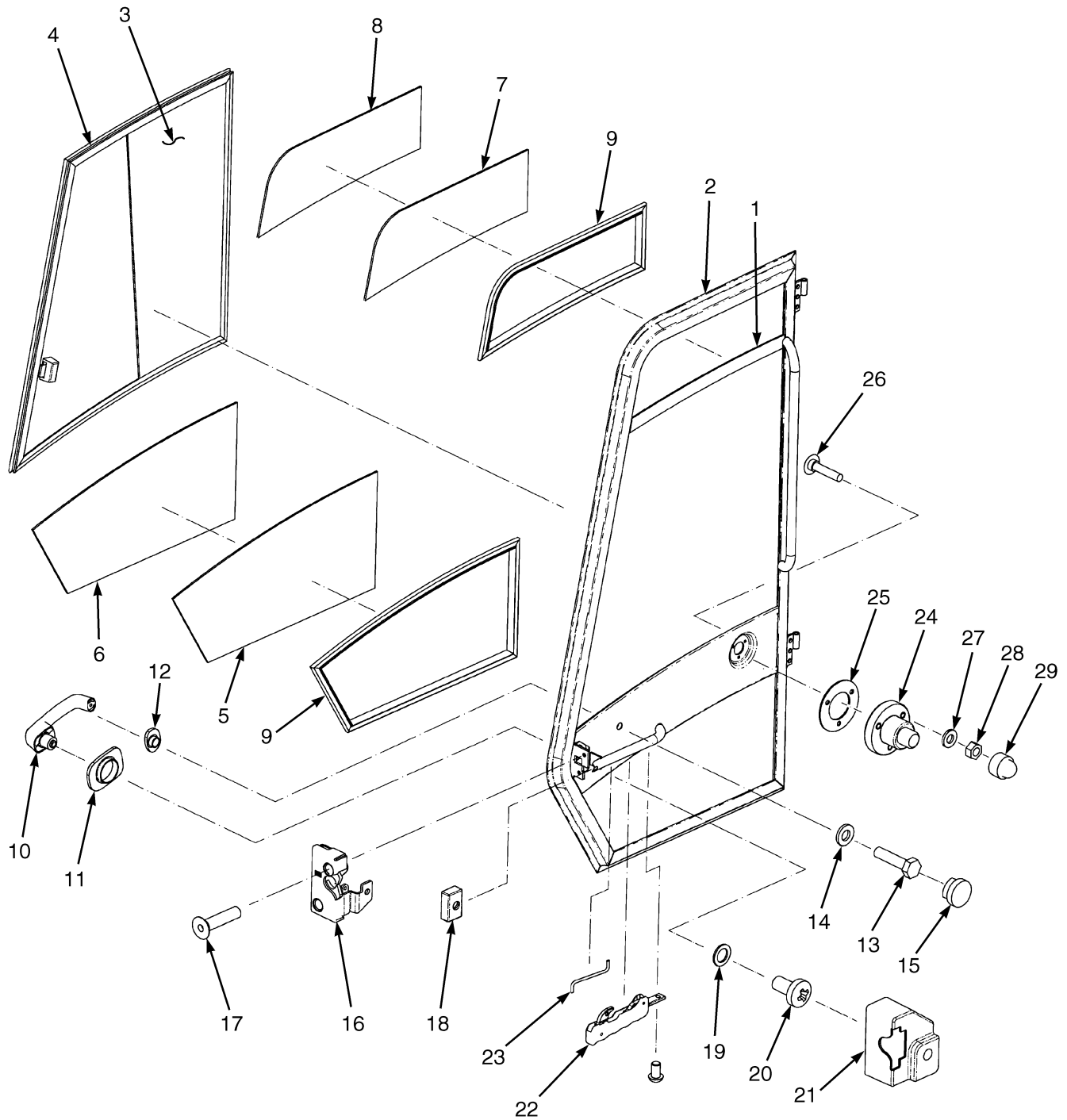
CAB AND ATTACHING PARTS

ITEM	PART NO.	DESCRIPTION	QTY
1	1558020	Bar (LH) (Hold-Open) (Lower)	1
1	1558021	Bar (RH) (Hold-Open) (Lower).....	1
2	1492239	Bolt	8
3	320158	Washer	10
4	1476584	Cap	6
5	1493313	Bumper	2
6	1558023	Bar (RH) (Hold-Open) (Upper)	1
6	1558022	Bar (LH) (Hold-Open) (Upper)	1
7	1493316	Bumper	2
8	316835	Nut	2
9	1476584	Cap	6
10	Window Assembly (Curved Window_	1
10	1493320	Windshield (Tempered)	1
10	1498750	Seal Kit.....	1
10	2046118	Windshield (Laminated).....	1
10	1498750	Seal Kit.....	1
10	2046119	Flat Glass Kit (Service Option)	1
10	1498750	Seal Kit.....	1
11	1493323	Window Assembly (Rear)	1
11	1493324	Window (Rear) (Curved)	1
11	1498750	Seal Kit.....	1
12	1558024	Window (Skylight) (Laminated).....	1
13	1515337	Seal	AR
13	1393463	Seal (Optional).....	AR
14	1498339	Sealant	AR
15	1498341	Seal	1
16	1498342	Washer	5
17	1493328	Clip	1
18	1493329	Cover	3
19	1493397	Cover	8
20	316834	Nut	8
21	1498343	Clip	3
22	320156	Washer	3
23	1493344	Wiper Motor	1
24	1498347	Wiper Arm.....	1
25	1498348	Wiper Blade	1
26	1493336	Connector	6
27	1493337	Hose	9
28	1507003	Nozzle (Top)	1
29	1493332	Wiper Motor	1
30	1493333	Linkage	1
31	1493334	Wiper Arm.....	1
32	1493335	Wiper Blade	1
33	1507005	Nozzle (Front).....	1
34	1493339	Wiper Motor	1
35	1493340	Wiper Blade	1
36	1493341	Wiper Arm.....	1
37	2043546	Wire Harness (Rear Wiper)	1
38	1498344	Washer (Nozzle)	1
39	1393473	Hinge (LH)	2
39	Pin (Hinge)	2

CAB AND ATTACHING PARTS

ITEM	PART NO.	DESCRIPTION	QTY
40	1393474	Hinge (RH).....	2
40	Pin (Hinge)	2
41	1493308	Bolt	12
42	1468312	Washer	4
43	1553405	Door Assembly (LH)	1
43	1553404	Door Assembly (RH).....	1
44	1493272	Air Filter Cover.....	1
44	1493274	Cover	1
45	1558028	Air Filter	1
46	293613	Capscrew	3
47	320156	Washer	3
48	1493318	Bolt Assembly (Striker)	2
48	1504953	Block.....	1
48	1504954	Guard (Striker Bolt)	1
48	1504955	Bolt (Striker)	1
49	1493307	Frame (Cab)	1

STEEL DOOR (Figure 1-6) RIGHT HAND

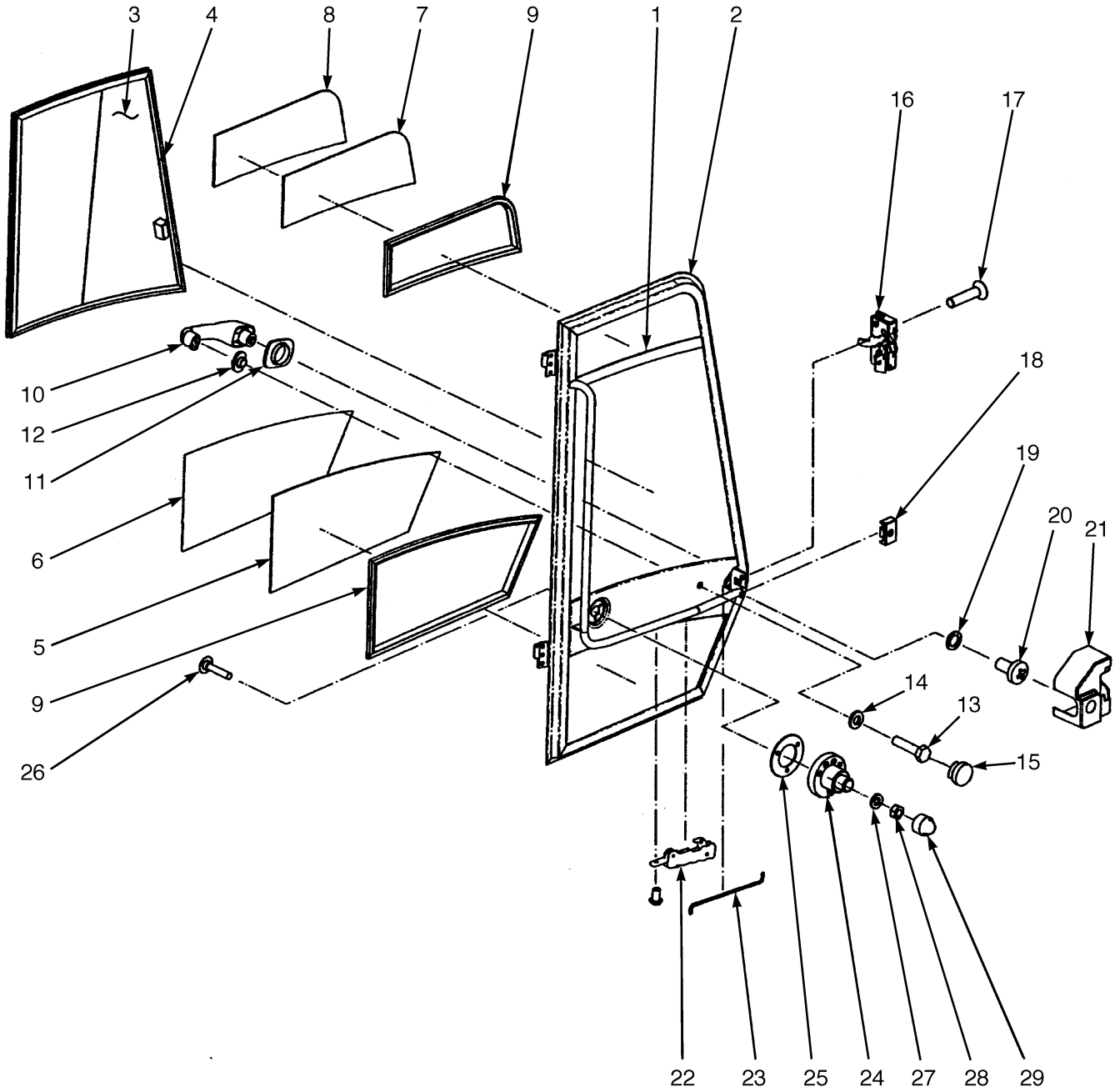


BP120062

**STEEL DOOR
RIGHT HAND**

ITEM	PART NO.	DESCRIPTION	QTY
	1553404	Door Assembly (RH).....	1
1	1558292	Frame	1
2	1515337	Seal	5
3	1558293	Window (Main)	1
4	1558294	Seal	1
5	1558295	Window (Lower)	1
6	1558296	Frame (Window) (Lower).....	1
7	1558297	Window (Upper)	1
8	1558298	Frame (Window) (Upper).....	1
9	1558299	Seal	4
10	1495371	Handle (Push Button).....	1
11	1495372	Seal	1
12	1495431	Seal	1
13	287816	Capscrew	1
14	1468321	Washer	1
15	1558300	Cap.....	1
16	1558301	Latch Assembly	1
17	296229	Capscrew	2
18	1558302	Plate (Door Handle).....	1
19	1558303	Washer	1
20	1558304	Screw	1
21	1495435	Cover	1
22	1558305	Remote Control (Door Handle).....	1
23	1558306	Rod (Connector).....	1
24	1497241	Hold-Open	1
25	1495454	Seal	1
26	1558307	Screw	3
27	1506738	Washer	3
28	316834	Nut.....	3
29	1493397	Cover	3

STEEL DOOR (Figure 1-7) LEFT HAND



BP120063

Thank you so much for reading.
Please click the “Buy Now!”
button below to download the
complete manual.



After you pay.

You can download the most
perfect and complete manual in
the world immediately.

Our support email:

ebooklibonline@outlook.com