

PARTS MANUAL

CHALLENGER

**H14.00-18.00XM-12, -12EC
(A214)**

CUSTOMER EDITION

HYSTER

SECTIONS

1	FRAME
2	ENGINES
3	FUEL SYSTEM
4	ELECTRICAL SYSTEM
5	TRANSMISSION
6	DRIVE AXLE
7	STEERING SYSTEM
8	BRAKE SYSTEM
9	HYDRAULIC SYSTEM
10	MAST-TWO STAGE VISTA
11	MAST WITH EMPTY CONTAINER HANDLER
12	OPTIONS
13	NUMERICAL INDEX

TABLE OF CONTENTS

DESCRIPTION	PAGE
A	
AIR COMPRESSOR PLUMBING	
TIER II ENGINE	2-60
AIR FILTER	
EMPTY CONTAINER HANDLER	
TIER II ENGINE	
S/N A214E-01849Z⇒	2-104
FORK LIFT TRUCK	
TIER II ENGINE	
S/N A214E-01843Z⇒	2-102
TIER I ENGINE	2-100
AIR FILTER ASSEMBLY	2-106
AIR INTAKE CONNECTION	
TIER I ENGINE	2-22
TIER II ENGINE	2-74
AIR INTAKE HEATER	
TIER I ENGINE	2-6
AIR INTAKE HOSE	
TIER II ENGINE	2-76
AIR TRANSFER CONNECTION	
TIER II ENGINE	2-77
ALTERNATOR	
TIER I ENGINE	2-11
ALTERNATOR MOUNTING	
TIER II ENGINE	2-61
AUXILIARY ATTACHMENTS	
EMPTY CONTAINER HANDLER	11-128
B	
BRAKE ASSEMBLY	
DISC	
S/N A214E01995B⇒ (H14-16XM FLT), S/N A214E02001B⇒ (H14-60XM ECH), S/N	
A214E02034A⇒ (H18-20XM FLT)	6-20
BRAKE CHECK VALVE	
EMPTY CONTAINER HANDLER	
⇒S/N A214E-1572	8-26
FORK LIFT TRUCK	
⇒S/N A214E-1572	8-28
BRAKE COOLING SYSTEM	
ACCUMULATOR	9-72
EMPTY CONTAINER HANDLER	
⇒S/N A214E-1751	9-64
S/N A214E-1752⇒	9-66
FORK LIFT TRUCK	
⇒S/N A214E-1751	9-68
FORKLIFT TRUCK	
S/N A214E-1752⇒	9-70
BRAKE LINES	
EMPTY CONTAINER HANDLER	8-2
FORK LIFT TRUCK	
⇒S/N A214E01765Y	8-6
S/N A214E01766Y⇒	8-10

TABLE OF CONTENTS (Continued)

DESCRIPTION	PAGE
B (continued)	
BRAKE PEDAL LINKAGE	
EMPTY CONTAINER HANDLER.....	8-14
FORK LIFT TRUCK	
⇒S/N A214E01765Y.....	8-18
S/N A214E01766Y⇒.....	8-22
BRAKE SYSTEM	
POWER BRAKE VALVE	8-30
BREATHER PLUMBING	
TIER II ENGINE	2-52
C	
CAM FOLLOWER COVER	
TIER I ENGINE	2-7
CAMSHAFT	
TIER II ENGINE	2-40
CARRIAGE	
HYDRAULIC SYSTEM	
TWO STAGE VISTA	10-38
TWO STAGE VISTA	10-34
WITH MECHANICAL PILE SLOPE	
SERIES 582 AND 588	
S/N A214E02078B⇒	11-80
WITH QUICK DISCONNECT	
TWO STAGE VISTA	10-36
CONTAINER ATTACHMENT INSTALLATION	
582 AND 588 SERIES	
S/N A214E02078B⇒.....	11-78
CONTROL PANEL	
⇒S/N A214E-1806	4-24
S/N A214E-1807⇒	4-26
COOLING	
EMPTY CONTAINER HANDLER	
TIER II ENGINE	
S/N A214E-01849Z⇒	2-116
FORK LIFT TRUCK	
TIER II ENGINE	
S/N A214E-01843Z⇒	2-112
TIER I ENGINE	2-108
COUNTERWEIGHTS	1-48
COVER AND SEAL	
TIER I ENGINE	2-12
COVERS	
EMPTY CONTAINER HANDLER.....	1-28
FORK LIFT TRUCK	1-30
CRANKCASE BREATHER	
TIER II ENGINE	2-57
CRANKSHAFT AND MAIN BEARINGS	
TIER II ENGINE	2-36
CYLINDER BLOCK	

TABLE OF CONTENTS (Continued)

DESCRIPTION	PAGE
C (continued)	
TIER II ENGINE	2-30
CYLINDER HEAD	
TIER II ENGINE	2-32
D	
DIFFERENTIAL ASSEMBLY	
⇒S/N A214E01994B (H14-16XM FLT), ⇒S/N A214E02000B (H14-16XM ECH), ⇒S/N A214E02033A (H18-20XM FLT).....	6-10
S/N A214E01995B⇒ (H14-16XM FLT), S/N A214E02001B⇒ (H14-16XM ECH), S/N A214E02034A⇒ (H18-20XM FLT).....	6-14
DOORS	1-26
DOUBLE HORIZONTAL TWIST LOCK HEAD ASSEMBLY	
CONTAINER HANDLING ATTACHMENT (572)	
S/N A214E-1807⇒.....	11-40
DRIVE AXLE	
⇒S/N A214E02000B (H14-16XM ECH), ⇒S/N A214E02033A (H18-20XM FLT), ⇒S/N A214E01994B (H14-16XM FLT).....	6-2
S/N A214E02034A⇒ (H18-20XM FLT), S/N A214E01995B⇒ (H14-16XM FLT), S/N A214E02001B⇒ (H14-16XM ECH).....	6-6
DRIVE SHAFT.....	6-22
E	
ELECTRICAL	
CHASSIS	
TIER I ENGINE	4-4
CHASSIS (TIER II ENGINE)	
SHEET 1 OF 4	4-8
SHEET 2 OF 4	4-10
SHEET 3 OF 4	4-12
SHEET 4 OF 4	4-16
ELECTRICAL BOX MOUNT	
582 AND 588 SERIES	
S/N A214E02078B⇒.....	11-82
ELECTRICAL SYSTEM	
SERIES 582	
S/N A214E02078B⇒.....	11-112
SERIES 588	
S/N A214E02078B⇒.....	11-114
SPREADER 572 AND 573	
S/N A214E-1807⇒.....	11-72
SPREADER 575	
S/N A214E-1807⇒.....	11-74
SPREADER 578	
S/N A214E-1807⇒.....	11-76
ELECTRONIC FOOT PEDAL MOUNT	
TIER II ENGINE	3-10
EMPTY HANDLER	
EMPTY CONTAINER HANDLER	
S/N A214E-1807⇒.....	11-30

TABLE OF CONTENTS (Continued)

DESCRIPTION	PAGE
E (continued)	
END BEAM ASSEMBLY	
SERIES 582	
S/N A214E02078B⇒.....	11-98
SERIES 588	
S/N A214E02078B⇒.....	11-102
ENGINE ASSEMBLY.....	2-5
ENGINE CONTROL SYSTEM	
TIER II ENGINE.....	2-46
ENGINE MOUNT.....	2-120
ENGINE OIL COOLER	
TIER II ENGINE.....	2-79
EXHAUST	
EMPTY CONATAINER HANDLER	
TIER II ENGINE.....	2-124
EMPTY CONTAINER HANDLER	
TIER I ENGINE.....	2-122
FORK LIFT TRUCK.....	2-126
EXHAUST MANIFOLD	
TIER II ENGINE.....	2-89
EXTENSION BEAM ARRANGEMENT	
SERIES 582 AND 588	
S/N A214E02078B⇒.....	11-96
EXTENSION CYLINDER	
EMPTY CONTAINER HANDLER	
⇒S/N A214E-1806.....	11-64
S/N A214E-1807⇒.....	11-66
EXTENSION CYLINDER ASSEMBLY	
SERIES 582 AND 588	
S/N A214E02078B⇒.....	11-90
F	
FAN DRIVE	
TIER I ENGINE.....	2-13
TIER II ENGINE.....	2-62
FAN PILOT SPACER	
TIER II ENGINE.....	2-88
FENDERS	
EMPTY CONTAINER HANDLER.....	1-52
FLOOR PLATES AND COVERS	
EMPTY CONTAINER HANDLER.....	1-4
FORK LIFT TRUCK	
SHEET 1 OF 2.....	1-8
SHEET 2 OF 2.....	1-12
FLYWHEEL	
TIER I AND TIER II ENGINES.....	2-58
FLYWHEEL HOUSING	
TIER II ENGINE.....	2-50
FORK POSITIONER AND SIDE-SHIFT CYLINDER	
TWO STAGE VISTA.....	10-40

TABLE OF CONTENTS (Continued)

DESCRIPTION	PAGE
F (continued)	
FORKS	
HOOK TYPE.....	12-10
PIN TYPE.....	12-8
FRONT DRIVE GEAR COVER	
TIER I ENGINE.....	2-8
FRONT GEAR COVER	
TIER II ENGINE.....	2-72
FRONT GEAR TRAIN COVER	
TIER II ENGINE.....	2-49
FUEL DRAIN	
TIER I ENGINE.....	2-9
FUEL FILTER	
TIER I ENGINE.....	2-14
TIER II ENGINE.....	2-63
FUEL FILTER PLUMBING	
TIER II ENGINE	
⇒S/N A214E-01950A.....	2-65
S/N A214E-01951A⇒.....	2-66
FUEL INJECTION PUMP	
TIER II ENGINE.....	2-67
FUEL PUMP MOUNT	
TIER II ENGINE.....	2-68
FUEL SHUT-OFF VALVE	
TIER I ENGINE.....	2-16
FUEL SYSTEM	
TIER I ENGINE.....	3-2
TIER II ENGINE.....	3-6
G	
GEAR HOUSING	
TIER II.....	2-73
GENERAL TRUCK.....	1-2
H	
HEADER HOSE	
EMPTY CONTAINER HANDLER	
⇒S/N A214E-1578.....	11-118
S/N A214E01963A⇒.....	11-124
S/N A214E1579⇔S/N A214E01962A.....	11-120
TWO STAGE VISTA.....	10-28
HEATER.....	1-40
HEATER CONTROL.....	1-44
HEATER PLUMBING	
TIER I ENGINE.....	2-25
HOOD	
EMPTY CONTAINER HANDLER.....	1-34
FORK LIFT TRUCK.....	1-36
HYDRAULIC	
CONTROL VALVE.....	

TABLE OF CONTENTS (Continued)

DESCRIPTION	PAGE
H (continued)	
ATTACHING PARTS	9-40
MAIN	9-42
DIRECTIONAL CONTROL VALVE	
EMPTY CONTAINER HANDLER	9-46
HYDRAULIC CONTROL	
⇒S/N A214E1842Z	9-32
S/N A214E1843Z⇒	9-36
HYDRAULIC LINES	
AUXILIARY	
FORK LIFT TRUCK.....	9-29
CONTROL VALVE	9-26
⇒S/N A214E-1806.....	9-20
S/N A214E-1807⇒.....	9-24
LIFT	
FORK LIFT TRUCK.....	9-30
SUPPLY AND RETURN	
EMPTY CONTAINER HANDLER	9-4
FORK LIFT TRUCK	
D/B 12/2002⇒	9-16
⇒D/B 12/2002	9-12
HYDRAULIC PILOT CONTROL SUPPLY VALVE	
EMPTY CONTAINER HANDLER.....	9-54
HYDRAULIC PILOT CONTROL VALVE	
EMPTY CONTAINER HANDLER.....	9-52
HYDRAULIC PUMP.....	9-58
HYDRAULIC RELIEF VALVE	
TILT	
⇒S/N A214E02029B.....	9-56
HYDRAULIC SOLENOID VALVE	
LIFT AND LOWERING INTERRUPT	
EMPTY CONTAINER HANDLER	
S/N A214E01752X⇒	9-50
HYDRAULIC SOLENOID VALVE ATTACHING PARTS	
LIFT AND LOWERING INTERRUPT	
EMPTY CONTAINER HANDLER	
S/N A214E01752X⇒	9-48
HYDRAULIC SYSTEM	
EMPTY CONTAINER HANDLER	
SHEET 1 OF 2	
⇒S/N A214E-1806	11-26
SHEET 2 OF 2	
⇒S/N A214E-1806	11-28
SERIES 582	
S/N A214E02078B⇒.....	11-106
SERIES 588	
S/N A214E02078B⇒.....	11-108
SPREADER 572	
S/N A214E-1807⇒.....	11-38
SPREADER 573	
S/N A214E-1807⇒.....	11-42

TABLE OF CONTENTS (Continued)

DESCRIPTION	PAGE
H (continued)	
SPREADER 575	
S/N A214E-1807⇒.....	11-56
SPREADER 578	
S/N A214E-1807⇒.....	11-46
TILT CYLINDER	
EMPTY CONTAINER HANDLER.....	9-74
FORK LIFT TRUCK.....	9-76
HYDRAULIC TANK	
⇒S/N A214E-1534.....	9-60
S/N A214E-1535⇒.....	9-62
I	
INJECTOR	
TIER II ENGINE.....	2-42
INNER MAST	
EMPTY CONTAINER HANDLER.....	11-8
TWO STAGE VISTA.....	10-6
INSTRUMENT PANEL	
SHEET 1 OF 2.....	4-18
SHEET 2 OF 2.....	4-22
L	
LABELS	
EXTERIOR	
EMPTY CONTAINER HANDLER.....	1-64
FORK LIFT TRUCK.....	1-66
INTERIOR.....	1-62
LIFT CYLINDER	
EMPTY CONTAINER HANDLER.....	11-18
H14.00-16.00XM	
TWO STAGE VISTA	
D/B 09/2004⇒.....	10-20
⇒D/B 09/2004.....	10-18
H18.00-20.00XM	
TWO STAGE VISTA	
D/B 09/2004⇒.....	10-26
⇒D/B 09/2004.....	10-22
LIFT CYLINDER ATTACHING PARTS	
EMPTY CONTAINER HANDLER.....	11-20
LIFT PUMP	
TIER I ENGINE.....	2-15
TIER II.....	2-70
LIFT PUMP PLUMBING	
TIER II ENGINE.....	2-71
LIFTING BRACKET	
TIER I ENGINE.....	2-17
TIER II ENGINE.....	2-78
LIGHT CONTROLS.....	4-28
LIGHTS	

TABLE OF CONTENTS (Continued)

DESCRIPTION	PAGE
L (continued)	
EMPTY CONTAINER HANDLER.....	4-30
FORK LIFT TRUCK	4-34
ROTATING BEACON	4-38
M	
MAIN LIFT	
EMPTY CONTAINER HANDLER	
⇒S/N A214E-1654.....	11-10
S/N A214E-1655⇒.....	11-14
TWO STAGE VISTA	
SHEET 1 OF 2	10-10
SHEET 2 OF 2	10-14
MAST INSTALLATION	
EMPTY CONTAINER HANDLER.....	11-130
TWO STAGE VISTA.....	10-32
O	
OIL COOLER	
TIER I ENGINE	2-18
OIL COOLER AND ATTACHING PARTS	
EMPTY CONTAINER HANDLER	
TIER II ENGINE	9-8
FORK LIFT TRUCK	
TIER II ENGINE	9-10
OIL FILLER ARRANGEMENT	
S/N A214E-01951A⇒.....	2-82
TIER I ENGINE	2-20
TIER II ENGINE	
⇒S/N A214E-01950A	2-80
OIL FILTER	
TIER II ENGINE	2-84
OIL LEVEL GAUGE	
TIER I ENGINE	2-19
TIER II ENGINE	2-55
OIL PAN	
TIER II ENGINE	2-53
OIL PUMP	
TIER II ENGINE	2-56
OPERATOR COMPARTMENT	
WITH CAB	
SHEET 1 OF 3	1-18
SHEET 2 OF 3	1-20
SHEET 3 OF 3	1-24
WITHOUT CAB.....	1-16
OUTER MAST	
EMPTY CONTAINER HANDLER.....	11-6
TWO STAGE VISTA.....	10-2

TABLE OF CONTENTS (Continued)

DESCRIPTION	PAGE
P	
PARK BRAKE	
⇒S/N A214E01994B (H14-16XM FLT), ⇒S/N A214E02000B (h14-16XM ECH), ⇒S/N A214E02033A (H18-20XM FLT).....	6-18
PISTON AND CONNECTING ROD	
TIER II ENGINE.....	2-34
PRE-CLEANER ASSEMBLY.....	2-107
R	
RADIATOR PLUMBING	
TIER II ENGINE.....	2-86
ROCKER LEVERS	
TIER II ENGINE.....	2-38
S	
SEAT	
HIGH BACK	
KAB.....	1-54
SENSORS	
SERIES 582	
S/N A214E02078B⇒.....	11-110
SIDE-SHIFT CYLINDER	
CONTAINER HANDLING ATTACHMENT	
⇒S/N A214E-1806.....	11-68
S/N A214E-1807⇒.....	11-70
SIDE-SHIFT CYLINDER ASSEMBLY	
SERIES 588	
S/N A214E02078B⇒.....	11-116
SINGLE HORIZONTAL TWIST LOCK HEAD ASSEMBLY	
CONTAINER HANDLING ATTACHMENT (573)	
S/N A214E-1807⇒.....	11-44
SLAVE BEAM	
EMPTY CONTAINER HANDLER	
S/N A214E-1807⇒.....	11-36
SOLENOID VALVE	
TWO STAGE VISTA.....	10-42
SPRING LOADED HOOK HEAD ASSEMBLY	
CONTAINER HANDLING ATTACHMENT (575)	
S/N A214E-1807⇒.....	11-58
STARTER	
TIER I ENGINE.....	2-21
STARTING MOTOR	
TIER II ENGINE.....	2-87
STEERING AXLE.....	7-18
STEERING CONTROL	
BLOCK VALVE	
⇒D/B 10/2003.....	7-16
STEERING CYLINDER.....	7-10
OPTIONAL.....	7-12
STEERING HOUSING AND CONTROL UNIT.....	7-2
STEERING HYDRAULICS	
EMPTY CONTAINER HANDLER.....	7-6

TABLE OF CONTENTS (Continued)

DESCRIPTION	PAGE
S (continued)	
FORK LIFT TRUCK	7-8
STEERING PUMP	7-14
SUSPENSION SEAT	
GRAMMER HIGH BACK	
SHEET 1 OF 2	1-56
SHEET 2 OF 2	1-60
T	
TENSIONER	
TIER II ENGINE	2-98
THERMOSTAT	
TIER I ENGINE	2-10
TIER II ENGINE	2-59
THERMOSTAT HOUSING	
TIER I ENGINE	2-23
THROTTLE	
TIER I ENGINE	3-8
THROTTLE PEDAL	
ELECTRONIC	
TIER II ENGINE	3-16
TIER I ENGINE	
⇒D/B 11/2002	3-12
D/B 12/2002⇒	3-14
TILT CYLINDER	
EMPTY CONTAINER HANDLER	9-78
FORK LIFT TRUCK	9-80
TORQUE CONVERTER OIL COOLER	
TIER II ENGINE	2-90
TRANSMISSION	
CLUTCH PACK	
SHEET 1 OF 3	5-28
SHEET 2 OF 3	5-32
SHEET 3 OF 3	5-36
CONTROL VALVE	
⇒S/N A214E-1615	5-20
S/N A214E-1616⇒	5-24
CONTROL VALVE ATTACHING PARTS	5-18
INCHING PEDAL	
⇒S/N A214E-1615	5-42
INCHING VALVE	
⇒S/N A214E-1615	5-44
INPUT SHAFT	5-14
SHIFT LEVER	5-40
TORQUE CONVERTER	5-17
TRANSMISSION ATTACHING PARTS	5-2
OIL FILTER	5-8
TRANSMISSION HYDRAULIC LINES	
⇒S/N A214E-1615	5-10
S/N A214E-1616⇒	5-12

TABLE OF CONTENTS (Continued)

DESCRIPTION	PAGE
T (continued)	
TRANSMISSION MOUNT AND ATTACHING PARTS	5-6
TURBOCHARGER	
TIER II ENGINE	2-85
TURBOCHARGER PLUMBING	
TIER II ENGINE	2-92
TWIST LOCK CYLINDER	
EMPTY CONTAINER HANDLER	
⇒S/N A214E-1806.....	11-52
S/N A214E-1807⇒.....	11-54
V	
VALVE ASSEMBLY	
END BEAM	
CONTAINER HANDLING ATTACHMENT	
S/N A214E-1807⇒	11-62
HEAD	
SERIES 582	
S/N A214E02078B⇒	11-89
LH, EXTENSION, TWISTLOCK	
SERIES 582 AND 588	
S/N A214E02078B⇒	11-85
PILOT CHECK	
SERIES 582 AND 588	
S/N A214E02078B⇒	11-86
RH, EXTENSION, TWISTLOCK	
SERIES 582 AND 588	
S/N A214E02078B⇒	11-84
SIDE-SHIFT	
SERIES 582 AND 588	
S/N A214E02078B⇒	11-87
SPREADER	
CONTAINER HANDLING ATTACHMENT	
S/N A214E-1807⇒	11-60
SPREADER 575	
CONTAINER HANDLING ATTACHMENT	
S/N A214E-1807⇒	11-61
VALVE COVER	
TIER I ENGINE	2-24
TIER II ENGINE	2-94
VALVE TAPPET	
TIER II ENGINE	2-44
VERTICAL END BEAM	
EMPTY CONTAINER HANDLER	
⇒S/N A214E-1806.....	11-24
VERTICAL TWIST LOCK HEAD ASSEMBLY	
CONTAINER HANDLING ATTACHMENT (578)	
S/N A214E-1807⇒.....	11-48
VIBRATION DAMPER	
TIER II ENGINE	2-48

TABLE OF CONTENTS (Continued)

DESCRIPTION	PAGE
W	
WATER INLET CONNECTION	
TIER I ENGINE	2-26
TIER II ENGINE	2-95
WATER OUTLET CONNECTION	
TIER I ENGINE	2-27
TIER II ENGINE	2-96
WATER PUMP	
TIER I ENGINE	2-28
TIER II ENGINE	2-97
WEAR PADS	
CONTAINER HANDLING ATTACHMENT (570)	
S/N A214E-1807⇒	11-34
END BEAM	
SERIES 582 AND 588	
S/N A214E02078B⇒	11-92
EXTENSION BEAM	
SERIES 582 AND 588	
S/N A214E02078B⇒	11-94
WEAR PLATES	
EMPTY CONTAINER HANDLER	
⇒S/N A214E-1806	11-22
WHEEL AND TIRE	
BIAS TIRE	12-2
RADIAL TIRE	12-4
SOLID TIRE	
SMOOTH	12-6
WITH TREAD	12-5
WINDSHIELD WASHER	1-46
WIRE HARNESS	
ATTACHMENT CONTROL	
S/N A214E-1651⇔S/N A214E-1806	4-44
SHEET 1 OF 2	
⇒S/N A214E-1650	4-40
SHEET 2 OF 2	
⇒S/N A214E-1650	4-42
ATTACHMENT CONTROL SWITCH	
S/N A214E-1807⇒	4-46
ATTACHMENT LIGHTS	
S/N A214E-1807⇒	4-48
CAB	
⇒S/N A214E-1797	4-50
S/N A214E-1798⇒	4-52
CARRIAGE CONTROL SWITCH	
S/N A214E-1403⇒	4-54
CHASSIS	
EMPTY CONTAINER HANDLER	4-56
FORK LIFT TRUCK	4-58
EMPTY CONTAINER HANDLER	
⇒S/N A214E-1806	11-132
ENGINE	
⇒S/N A214E-1718	4-60

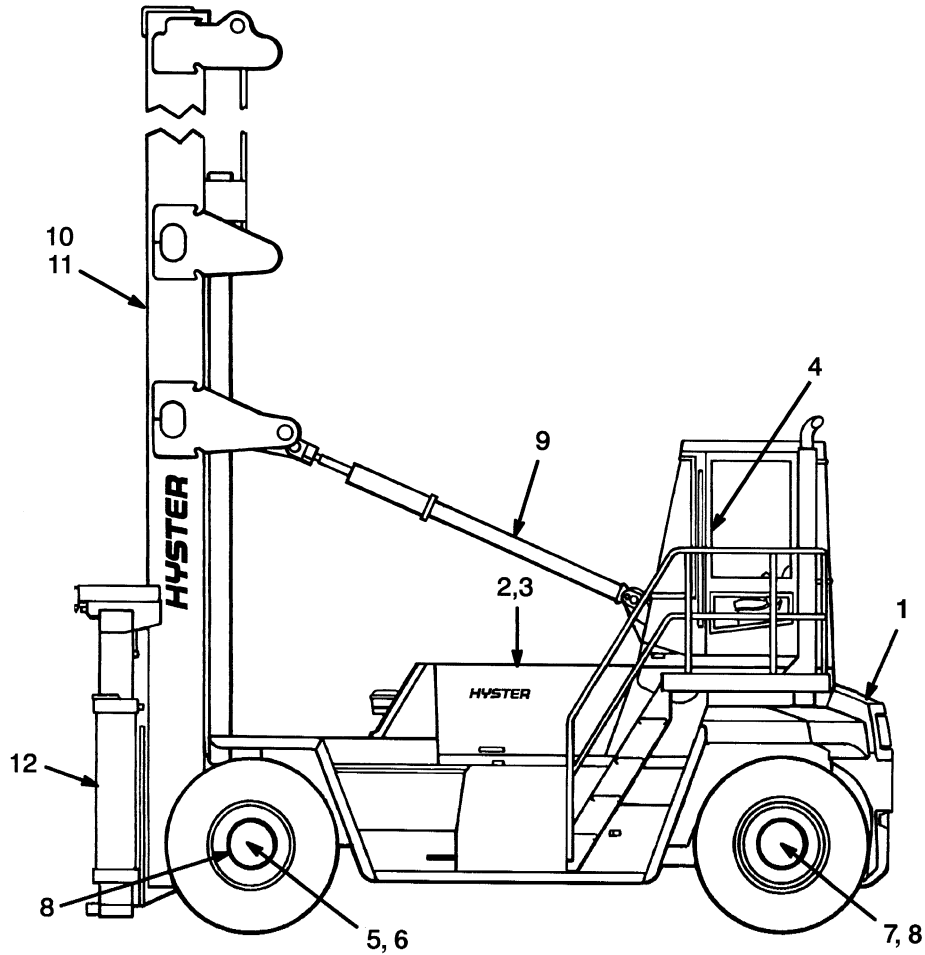
TABLE OF CONTENTS (Continued)

DESCRIPTION	PAGE
W (continued)	
S/N A214E-1719⇒.....	4-62
FRONT END EQUIPMENT	
EMPTY CONTAINER HANDLER	
⇒S/N A214E-1806	4-64
S/N A214E-1807⇒	4-66
FORK LIFT TRUCK.....	4-68
FRONT LIGHTS.....	4-69
HOOK ATTACHMENT	
S/N A214E-1807⇒.....	11-135
HYDRAULIC	
EMPTY CONTAINER HANDLER	
⇒S/N A214E-1806	4-70
S/N A214E-1807⇒	4-72
FORK LIFT TRUCK.....	4-74
MODULE	
⇒S/N A214E-1797	4-76
S/N A214E-1798⇒.....	4-77
OPERATOR COMPARTMENT	
SHEET 1 OF 2	4-78
SHEET 2 OF 2	4-80
OPERATOR COMPARTMENT TO MAST LIGHT JUMPER	
FORK LIFT TRUCK.....	4-82
REAR LIGHT	4-83
ROTATING BEACON	4-84
STEERING POD.....	4-86
SWITCH	
WARNING	4-89
SWITCH LIGHTS.....	4-88
TRANSMISSION.....	4-90
⇒S/N A214E-1615.....	4-92
S/N A214E-1616⇒.....	4-94
TURN SIGNAL.....	4-96
TWIST LOCK	
S/N A214E-1807⇒.....	11-134
WINDSHIELD WASHER.....	4-97
WORK LIGHTS.....	4-98
EMPTY CONTAINER HANDLER.....	4-99
FORK LIFT TRUCK.....	4-100
WORK LIGHTS EXTENSION	
FORK LIFT TRUCK.....	4-101
WIRING ACCESSORIES	
TIER II ENGINE.....	2-99

**SECTION 1
FRAME**

DESCRIPTION	PAGE
COUNTERWEIGHTS	1-48
COVERS	
EMPTY CONTAINER HANDLER.....	1-28
FORK LIFT TRUCK	1-30
DOORS	1-26
FENDERS	
EMPTY CONTAINER HANDLER.....	1-52
FLOOR PLATES AND COVERS	
EMPTY CONTAINER HANDLER.....	1-4
FORK LIFT TRUCK	
SHEET 1 OF 2	1-8
SHEET 2 OF 2	1-12
GENERAL TRUCK	1-2
HEATER	1-40
HEATER CONTROL.....	1-44
HOOD	
EMPTY CONTAINER HANDLER.....	1-34
FORK LIFT TRUCK	1-36
LABELS	
EXTERIOR	
EMPTY CONTAINER HANDLER.....	1-64
FORK LIFT TRUCK.....	1-66
INTERIOR.....	1-62
OPERATOR COMPARTMENT	
WITH CAB	
SHEET 1 OF 3	1-18
SHEET 2 OF 3	1-20
SHEET 3 OF 3	1-24
WITHOUT CAB.....	1-16
SEAT	
HIGH BACK	
KAB	1-54
SUSPENSION SEAT	
GRAMMER HIGH BACK	
SHEET 1 OF 2	1-56
SHEET 2 OF 2	1-60
WINDSHIELD WASHER	1-46

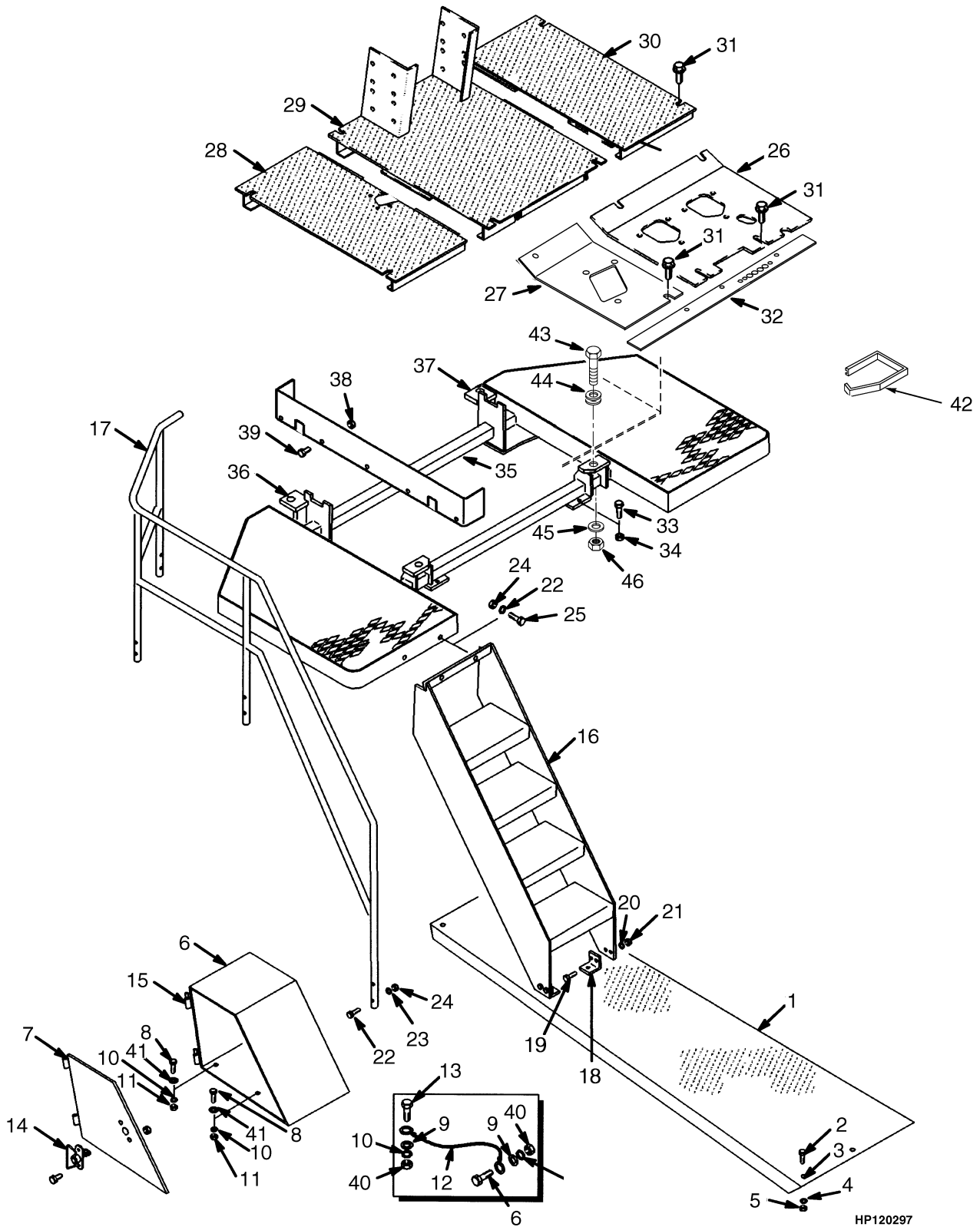
GENERAL TRUCK (Figure 1-1)



HP990033

ITEM	PART NO.	DESCRIPTION	QTY
1	Frame (☞ Figure 1-2)	1
2	Engines (☞ Figure 2-85)	1
3	Fuel System (☞ Figure 3-1)	1
4	Electrical System (☞ Figure 4-1)	1
5	Transmission (☞ Figure 5-1)	1
6	Drive Axle (☞ Figure 6-1)	1
7	Steering System (☞ Figure 7-2)	1
8	Brake System (☞ Figure 8-1)	1
9	Hydraulic System (☞ Figure 9-1)	1
10	Mast-Two Stage Limited Free-Lift (☞ Figure 10-1)	1
11	Mast-Empty Container Handler (☞ Figure 11-1)	1
12	Options (☞ Figure 12-1)	1

FLOOR PLATES AND COVERS (Figure 1-2) EMPTY CONTAINER HANDLER



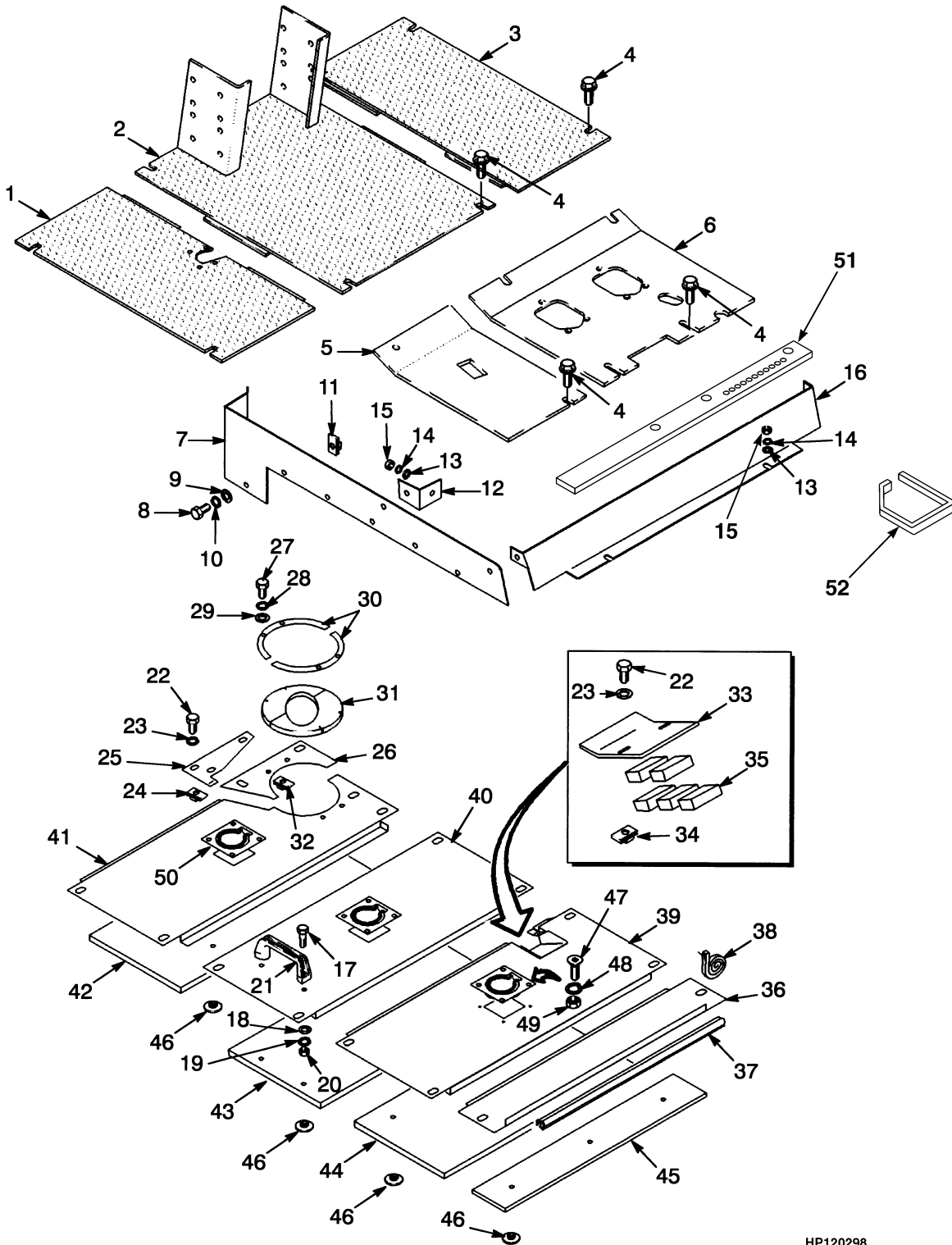
**FLOOR PLATES AND COVERS
EMPTY CONTAINER HANDLER**

ITEM	PART NO.	DESCRIPTION	QTY
1	1541792	Running Board (RH)	1
1	1541791	Running Board (LH).....	1
2	246001	Capscrew.....	14
3	216735	Grommet.....	14
4	320162	Washer	42
5	300937	Locknut	14
6	1382005	Battery Box	1
6	1382017	Storage Box	1
7	1382007	Door (LH).....	1
7	1382018	Door (RH)	1
8	287854	Capscrew.....	8
9	320159	Washer	8
10	292682	Lockwasher.....	8
11	136692	Nut	8
12	1456622	Cable	2
13	296172	Capscrew.....	4
14	1391416	Latch	2
15	1301700	Bushing (Brass).....	4
16	1519654	Steps	2
17	1373739	Handrail (LH)	1
17	1373740	Handrail (RH).....	1
18	1382612	Bracket (Tier I Engine).....	4
19	302335	Capscrew.....	12
20	320159	Washer	12
21	136692	Nut	12
22	302349	Capscrew.....	8
23	320162	Washer	8
24	300937	Locknut	14
25	302343	Capscrew.....	6
26	1382649	Floorplate (LH Front)	1
27	1355113	Floorplate (RH Front) (Tier I Engine).....	1
27	1508108	Floorplate (RH Front) (Tier II Engine).....	1
28	1336914	Floorplate (RH).....	1
29	1465374	Floorplate (Center)	1
30	1325557	Floorplate (LH).....	1
31	329067	Screw.....	15
32	1336912	Seal (Tier I Engine).....	1
32	1508250	Seal (Tier II Engine).....	1
33	292563	Capscrew.....	4
34	316828	Nut	4
35	1545279	Platform	1
36	1373747	Plate (LH)	1
37	1373746	Plate (RH).....	1
38	316826	Nut	10
39	292514	Capscrew.....	10
40	316826	Nut	4
41	320160	Washer	8
42	1457097	Molding (Rubber).....	2
43	292535	Capscrew.....	4
44	1325519	Mount (Cab).....	4

FLOOR PLATES AND COVERS EMPTY CONTAINER HANDLER

ITEM	PART NO.	DESCRIPTION	QTY
45	300939	Washer	4
46	300937	Locknut	4

FLOOR PLATES AND COVERS (Figure 1-3) FORK LIFT TRUCK SHEET 1 OF 2



HP120298

FLOOR PLATES AND COVERS FORK LIFT TRUCK SHEET 1 OF 2

ITEM	PART NO.	DESCRIPTION	QTY
1	1336914	Floorplate (RH).....	1
2	1465374	Floorplate (Center).....	1
3	1325557	Floorplate (LH).....	1
4	329067	Screw.....	15
5	1355113	Floorplate (RH Front) (Tier I Engine).....	1
5	1508108	Floorplate (RH Front) (Tier II Engine).....	1
6	1382649	Floorplate (LH Front).....	1
7	a 1393855	Plate (RH).....	1
7	b 1393853	Cover (RH).....	1
7	a 1393854	Cover (LH).....	1
7	b 1393852	Cover (LH).....	1
8	a 136749	Capscrew.....	18
8	b 136749	Capscrew.....	16
9	a 320158	Washer.....	18
9	b 320158	Washer.....	16
10	a 292681	Lockwasher.....	18
10	b 292681	Lockwasher.....	16
11	a 1384661	Nut.....	18
11	b 1384661	Nut.....	16
12	1393856	Bracket.....	2
13	320160	Washer.....	4
14	292682	Lockwasher.....	4
15	136692	Nut.....	4
16	a 1393858	Cover (Front).....	1
16	b 1393850	Cover (Front).....	1
17	292501	Capscrew.....	2
18	320156	Washer.....	2
19	292680	Lockwasher.....	2
20	136687	Nut.....	2
21	362030	Handle.....	1
22	136749	Capscrew.....	20
23	320158	Washer.....	20
24	1385535	Nut.....	18
25	1451594	Plate.....	1
26	1456189	Plate.....	1
27	296155	Capscrew.....	4
28	292679	Lockwasher.....	4
29	320155	Washer.....	4
30	1451555	Plate.....	2
31	1451522	Cover (Exhaust).....	2
32	1364542	Clip Nut.....	4
33	1451559	Bracket.....	1
34	1384661	Nut.....	2
35	217549	Foam Tape.....	AR
36	1451783	Cover.....	1
37	1393871	Seal.....	1
38	261158	Foam Tape.....	AR
39	1451717	Cover.....	1
40	1393872	Cover.....	1
41	1451782	Cover.....	1

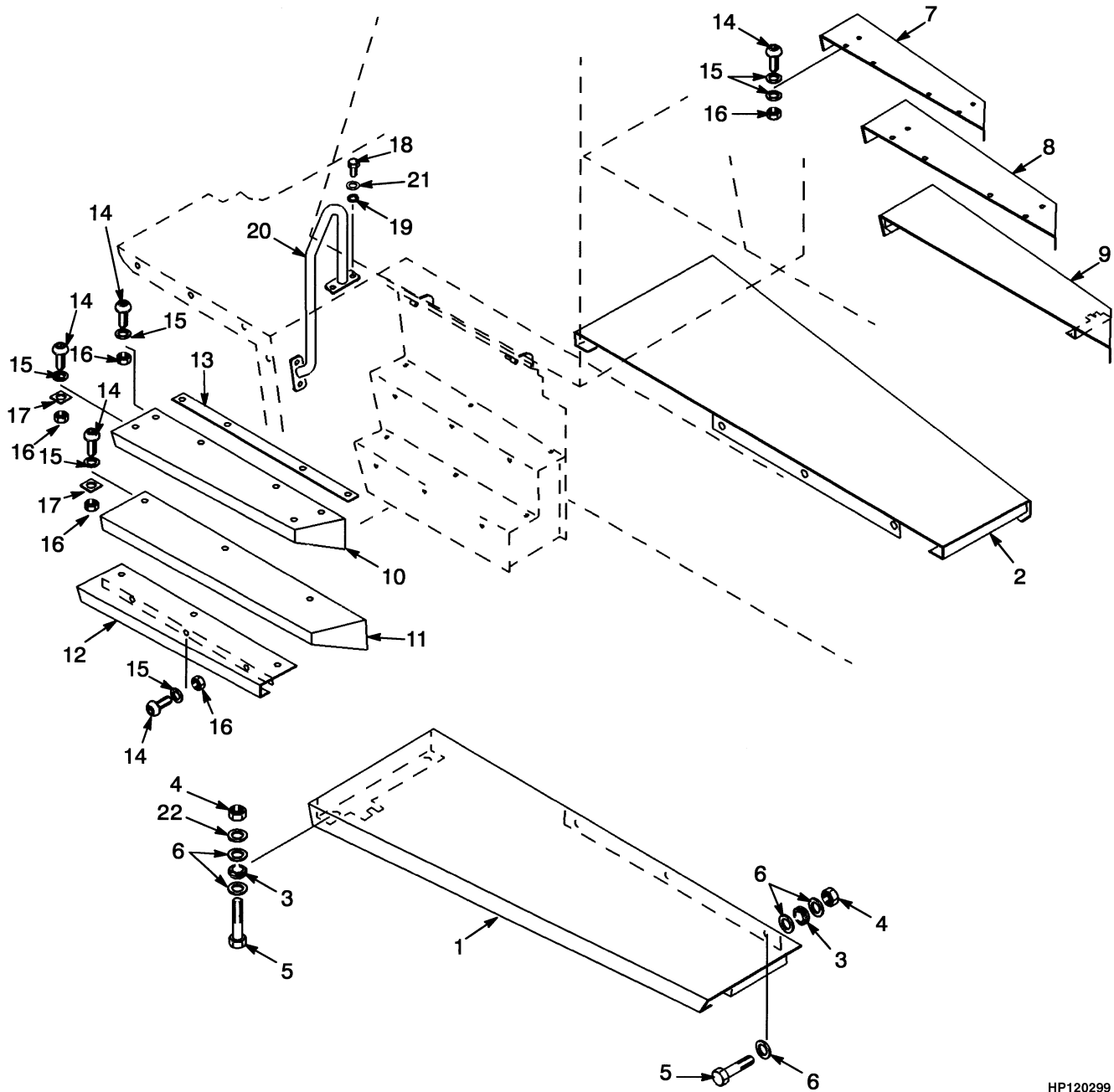
FLOOR PLATES AND COVERS FORK LIFT TRUCK SHEET 1 OF 2

ITEM	PART NO.	DESCRIPTION	QTY
42	1451530	Insulation	1
43	1451529	Insulation	1
44	1451528	Insulation	1
45	1451527	Insulation	1
46	1361087	Button	10
47	296150	Capscrew	12
48	320154	Washer	12
49	815597	Nut	12
50	1451521	Handle	3
51	1336912	Seal (Tier I Engine).....	1
51	1508250	Seal (Tier II Engine).....	1
52	1457097	Molding (Rubber) (Not Illustrated)	2

FOOTNOTES:

- a** H16.00XM
- b** H18.00XM

FLOOR PLATES AND COVERS (Figure 1-4) FORK LIFT TRUCK SHEET 2 OF 2



HP120299

FLOOR PLATES AND COVERS FORK LIFT TRUCK SHEET 2 OF 2

ITEM	PART NO.	DESCRIPTION	QTY
1	ae	1450769 Running Board (LH).....	1
1	af	1541789 Running Board (LH).....	1
1	be	1450783 Running Board (LH).....	1
1	bf	1541787 Running Board (LH).....	1
2	ae	1450770 Running Board (RH).....	1
2	af	1541790 Running Board (RH).....	1
2	be	1450784 Running Board (RH).....	1
2	bf	1541788 Running Board (RH).....	1
3		216735 Grommet.....	10
4		300937 Locknut.....	10
5		246001 Capscrew.....	10
6	e	320162 Washer.....	30
6	f	320162 Washer.....	34
7	ac	1452202 Step.....	1
7	ad	1518324 Step.....	1
7	bc	1452197 Step.....	1
7	bd	1518171 Step.....	1
8	ac	1452203 Step.....	1
8	ad	1518323 Step.....	1
8	bc	1452198 Step.....	1
8	bd	1518100 Step.....	1
9	ac	1454945 Step.....	1
9	ad	1518322 Step.....	1
9	bc	1454949 Step.....	1
9	bd	1518099 Step.....	1
10	ae	1451497 Step (Top).....	1
10	af	1554855 Step (Top).....	1
10	bf	1451484 Step (Top).....	1
10	bf	1556307 Step (Top).....	1
11	ae	1451494 Step.....	1
11	ag	1554857 Step.....	1
11	ah	1589321 Step.....	1
11	be	1451489 Step.....	1
11	bg	1556306 Step.....	1
11	bh	1589330 Step.....	1
12	ae	1451503 Step.....	1
12	ag	1554858 Step.....	1
12	ah	1589323 Step.....	1
12	be	1451500 Step.....	1
12	bg	1556304 Step.....	1
12	bh	1589328 Step.....	1
13	a	1451478 Plate.....	1
13	b	1451477 Plate.....	1
14	d	296174 Capscrew.....	27
15	d	320160 Washer.....	30
16	d	316826 Nut.....	27
17		1451012 Spacer.....	8
18		287860 Capscrew.....	8
19		316826 Nut.....	8
20		1452277 Handrail (LH).....	1

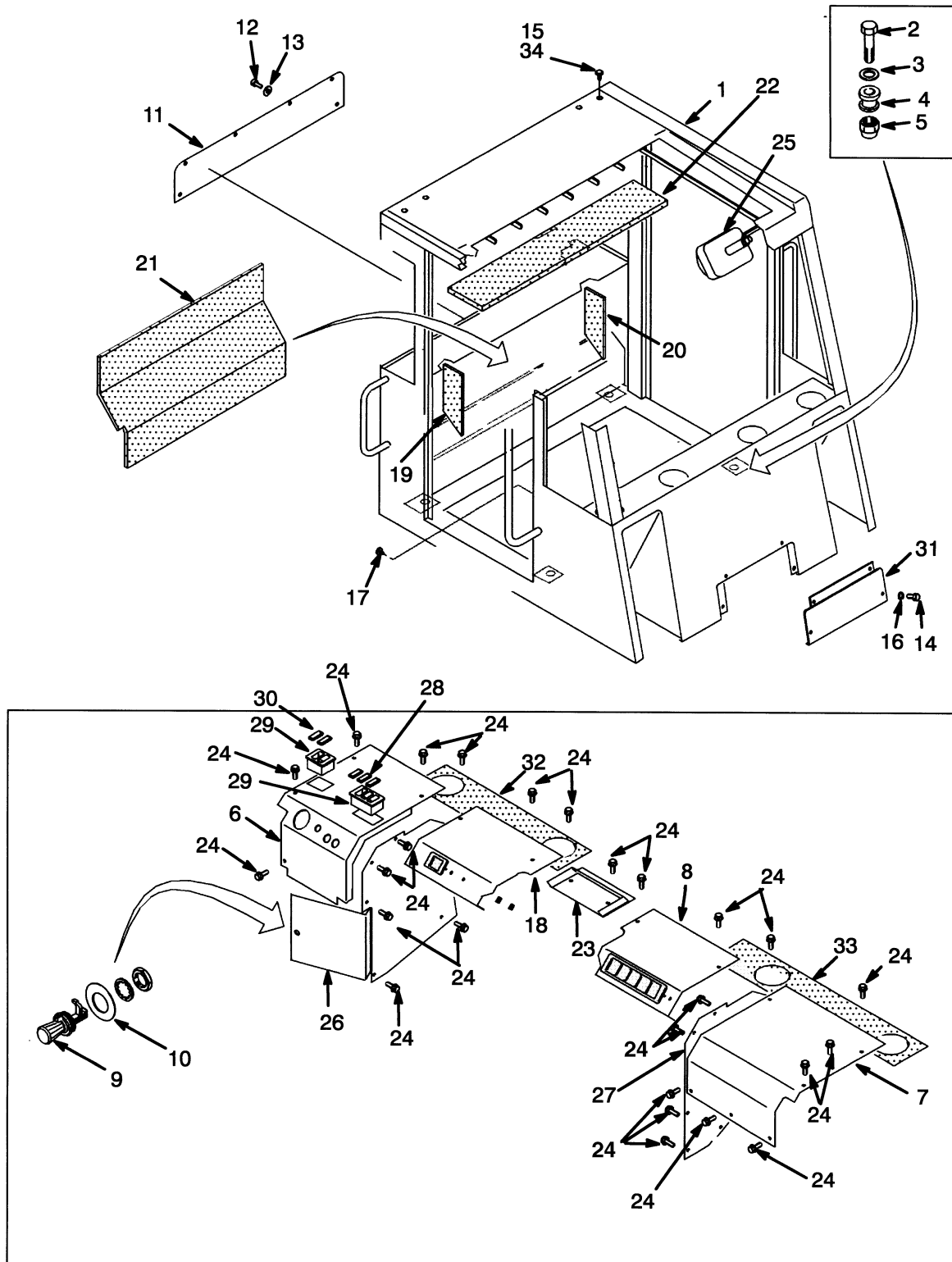
FLOOR PLATES AND COVERS FORK LIFT TRUCK SHEET 2 OF 2

ITEM	PART NO.	DESCRIPTION	QTY
20	1452278	Handrail (RH).....	1
21	320159	Washer	16
22	320161	Washer	8

FOOTNOTES:

- a** H16.00XM
- b** H18.00XM
- c** ⇒ S/N A214E01842Z
- d** S/N A214E01843Z↔S/N A214E02062E
- e** ⇒ S/N A214E02062E
- f** S/N A214E02063E ⇒
- g** S/N A214E02063E↔S/N A214E02120C
- h** S/N A214E02121C ⇒

OPERATOR COMPARTMENT (Figure 1-5) WITHOUT CAB

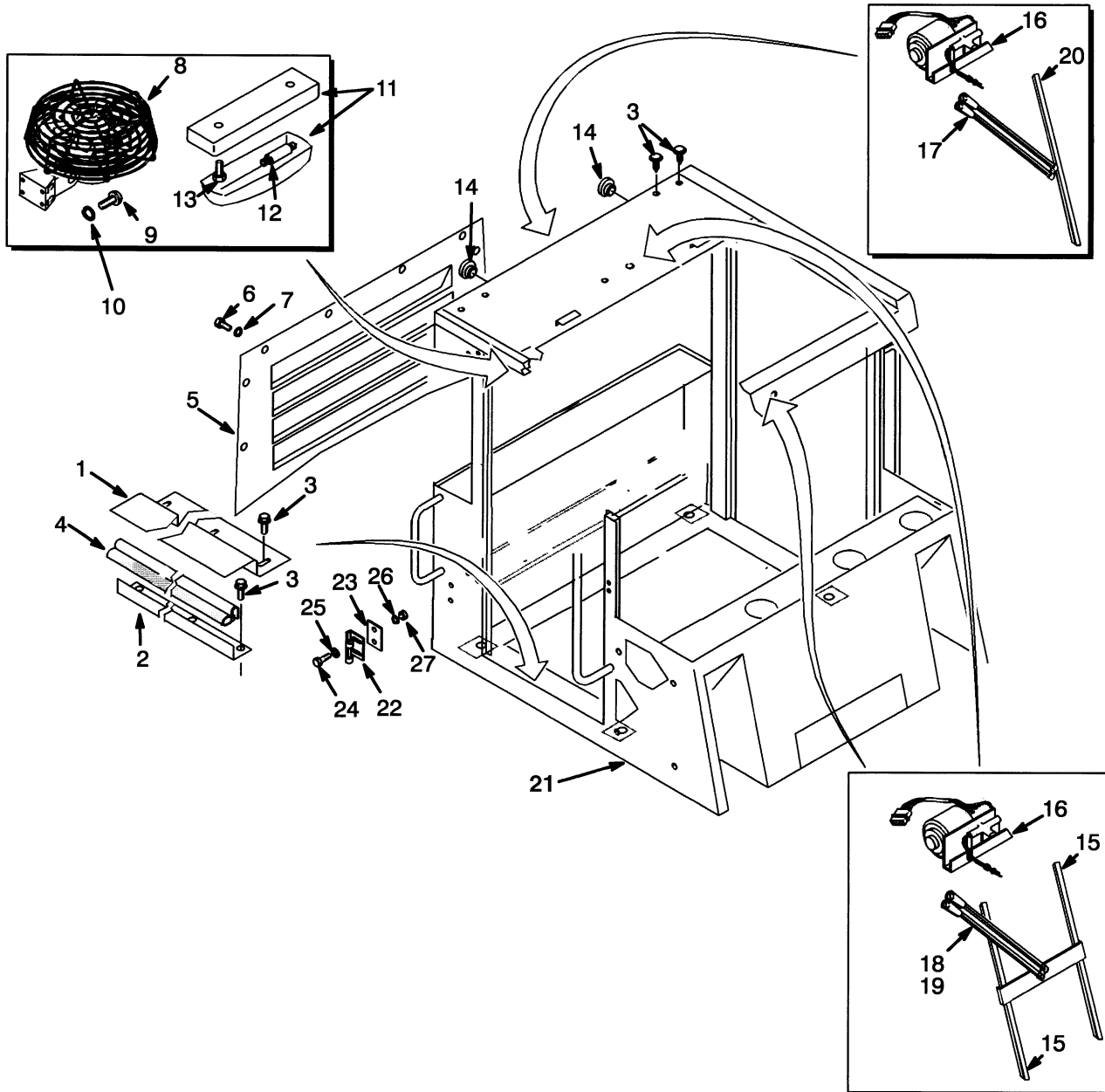


HP120300

**OPERATOR COMPARTMENT
WITHOUT CAB**

ITEM	PART NO.	DESCRIPTION	QTY
1	1373718	Operator Compartment.....	1
2	292535	Capscrew.....	4
3	300939	Washer	4
4	1325519	Mount (Cab).....	4
5	300937	Locknut	4
6	1451065	Cover (LH) (Tier I Engine)	1
6	1521834	Cover (LH) (Tier II Engine)	1
7	1325597	Cover (RH).....	1
8	1393754	Cover	1
9	1311288	Latch	1
10	1311287	Washer	1
11	1453421	Plate	1
12	1384659	Capscrew.....	6
13	1324577	Washer	6
14	369242	Capscrew.....	4
15	1307737	Fastener.....	4
16	375629	Washer	4
17	1304971	Fastener (Tier I Engine).....	2
18	1393755	Cover (Tier I Engine)	1
18	1507272	Cover (Tier II Engine)	1
19	1301263	Liner (LH Lower)	1
20	1301264	Liner (RH Lower)	1
21	1325623	Liner (Lower Center).....	1
22	1325624	Liner (Top)	1
23	1301189	Cover	1
24	1301177	Screw.....	31
25	1301286	Mirror	2
26	1311388	Door.....	1
27	1301255	Panel (RH Access)	1
28	376947	Bezel.....	1
29	376949	Cover	5
30	376948	Bezel.....	2
31	1393833	Plate	1
32	1301293	Gasket (LH)	1
33	1301292	Gasket (RH).....	1
34	280472	Sealant	AR

OPERATOR COMPARTMENT (Figure 1-6) WITH CAB SHEET 1 OF 3



HP120319

Thank you so much for reading.
Please click the “Buy Now!”
button below to download the
complete manual.



After you pay.

You can download the most
perfect and complete manual in
the world immediately.

Our support email:

ebooklibonline@outlook.com