

PARTS MANUAL

ELECTRIC

**J2.00-3.20XM
(A216)**

CUSTOMER EDITION

HYSTER

SECTIONS

1	FRAME
2	ELECTRICAL SYSTEM
3	DRIVE UNIT
4	STEERING SYSTEM
5	BRAKE/ACCELERATOR SYSTEM
6	HYDRAULIC SYSTEM
7	MAST-TWO STAGE LIMITED FREE-LIFT
8	MAST-THREE STAGE FULL FREE-LIFT
9	MAST-TWO STAGE FULL FREE-LIFT
10	OPTIONS
11	NUMERICAL INDEX

TABLE OF CONTENTS

DESCRIPTION	PAGE
A	
ACCELERATOR	5-14
AUXILIARY TUBES	
FOUR STAGE FULL FREE-LIFT	
FOUR FUNCTION GROUP	10-26
TWO AND THREE STAGE FULL FREE-LIFT	
FOUR FUNCTION GROUP	10-24
B	
BACK-UP ALARM	
⇒S/N A216A-03971W	10-30
S/N A216A-03972W⇒	10-40
BATTERY CONNECTOR	
⇒S/N A216A-03971W	2-76
BRAKE	5-6
BRAKE AND BACK-UP LIGHTS	
⇒S/N A216A-03971W	10-28
S/N A216A-03972W⇒	10-36
BRAKE PEDAL LINKAGE	5-2
C	
CARRIAGE	
FOUR ROLLER	
TWO STAGE FULL FREE-LIFT	9-24
TWO STAGE LIMITED FREE-LIFT	7-16
SIX ROLLER	
S/N B508A-01615T⇒, S/N B508B-19920⇒, S/N B563A-01752T⇒, S/N B563B-10320⇒	8-26
THREE STAGE FULL FREE-LIFT	
⇒S/N B508A-01615T, ⇒S/N B508B-19919, ⇒S/N B563A-01751T, ⇒S/N B563B-10319	8-24
TWO STAGE FULL FREE-LIFT	9-26
TWO STAGE LIMITED FREE-LIFT	7-18
CONTACTOR	
SHEET 1 OF 2	
⇒S/N A216A-03971W	2-64
S/N A216A-03972W⇒	2-68
SHEET 2 OF 2	
⇒S/N A216A-03971W	2-66
S/N A216A-03972W⇒	2-70
CONTACTOR PANEL	
SHEET 1 OF 2	
S/N A216A-03972W⇒	2-50
SHEET 2 OF 2	
S/N A216A-03972W⇒	2-52
THYRISTOR	
CONTACTOR HYDRAULIC	
⇒S/N A216A-03971W	2-44
SILICON CONTROLLED RECTIFIER HYDRAULIC	
⇒S/N A216A-03971W	2-46
TRANSISTOR	
CONTACTOR HYDRAULIC	
⇒S/N A216A-03971W	2-48

TABLE OF CONTENTS (Continued)

DESCRIPTION	PAGE
C (continued)	
CONTROL PANEL	
CONTACTOR HYDRAULIC	
S/N A216A-03972W⇒	2-36
⇒S/N A216E-03971W	2-60
TRANSISTOR HYDRAULIC	
S/N A216A-003972W⇒	2-42
CONTROL VALVE	
FOUR FUNCTION	6-52
THREE FUNCTION	6-48
CONTROL VALVE ATTACHING PARTS	
D/B 12/2000⇒	6-34
⇒D/B 12/2000	6-32
COUNTERWEIGHT	
D/B 08/1998⇒	1-18
⇒D/B 08/1998	1-16
COVERS	
⇒S/N A216A-03971	1-6
S/N A216A-03972⇒	1-10
D	
DASH DISPLAY	
PREMIUM	
⇒S/N A216A-03971W	2-20
S/N A216A-03972W⇒	2-22
DC CONVERTER	
72/80 VOLT TO 12 VOLT	
S/N A216A-03972W⇒	10-32
DIRECTION CONTACTOR	
⇒S/N A216A-03971W	2-62
DRIVE AXLE	3-2
DRIVE MOTOR MOUNT	6-4
DRIVE TIRE AND WHEEL	10-4
DRIVE, REAR LIGHTS, AND SPOTLIGHT	10-34
E	
ELECTRICAL SYSTEM	
CONTACTOR HYDRAULIC	
S/N A216A-03972W⇒	2-8
COWL	
S/N A216A-03972W⇒	2-16
⇒S/N A216A-03971W	2-12
SCR HYDRAULIC	
⇒S/N A216A-03971W	2-4
F	
FORK	
J2.00-2.50XM.....	1-36
J3.00-3.20.....	1-37
FRAME	1-4

TABLE OF CONTENTS (Continued)

DESCRIPTION	PAGE
F (continued)	
FREE-LIFT	
THREE STAGE FULL FREE-LIFT	8-12
TWO STAGE FULL FREE-LIFT	9-8
FREE-LIFT CYLINDER	
THREE STAGE FULL FREE-LIFT	8-20
FULL SUSPENSION SEAT	
FIRST SHEET	
D/B 02/2000⇒	1-30
SECOND SHEET	
D/B 02/2000⇒	1-32
G	
GEAR PUMP	
D/B 10/2000⇒	4-20
OPTIONAL	4-22
⇒S/N A216A02883U	4-16
S/N A216A02884U⇒ D/B 10/2000	4-18
GENERAL TRUCK	1-2
H	
HAND LEVER	
⇒D/B 12/2000	6-36
⇒S/N A216A-0565Z	6-40
S/N A216A-0566Z⇒	6-44
HAND PUMP	
D/B 11/1997⇒	4-10
⇒D/B 11/1997	4-8
HEADER HOSE	
THREE STAGE FULL FREE-LIFT	8-28
TWO STAGE FULL FREE-LIFT	9-28
TWO STAGE LIMITED FREE-LIFT	7-20
HOOD	
D/B 08/1998⇒	1-24
⇒D/B 08/1998	1-20
HYDRAULIC	6-2
HYDRAULIC PUMP	6-16
12 CC	
SINGLE GEAR PUMP	
D/B 04/1998⇒	6-8
19 CC	
DOUBLE GEAR PUMP	
D/B 04/1998⇒	6-12
19 CC SINGLE GEAR	
OPTIONAL	6-18
⇒D/B 04/1998	6-6
LOW NOISE	6-14
OPTIONAL	6-10
HYDRAULIC PUMP MOTOR	6-22
HIGH SPEED	

TABLE OF CONTENTS (Continued)

DESCRIPTION	PAGE
H (continued)	
WITH BWI	6-20
OPTION	
TYPE 1	6-24
TYPE 2	6-26
HYDRAULIC TANK	6-56
I	
INNER MAST	
THREE STAGE FULL FREE-LIFT	8-6
TWO STAGE FULL FREE-LIFT	9-4
TWO STAGE LIMITED FREE-LIFT	7-4
INSTRUMENT CLUSTER	
CONTACTOR HYDRAULIC	
WITH SEAT BELT LIGHT	
⇒S/N A216A-03971W	2-26
ECONOMY CONTACTOR HYDRAULIC	
WITHOUT SEAT BELT LIGHT, WITH HOURMETER AND VOLTMETER GAUGE	
⇒S/N A216A-03971W	2-24
INTEGRAL SIDE-SHIFT	
HYDRAULIC HOSES	
THREE STAGE FULL FREE-LIFT	10-21
TWO STAGE FULL FREE-LIFT	10-22
TWO STAGE LIMITED FREE-LIFT	10-20
INTEGRAL SIDE-SHIFT CARRIAGE	
THREE STAGE FULL FREE-LIFT	10-14
TWO STAGE FULL FREE-LIFT	10-16
TWO STAGE LIMITED FREE-LIFT	10-12
INTEGRAL SIDE-SHIFT CYLINDER	10-18
INTERMEDIATE MAST	
THREE STAGE FULL FREE-LIFT	8-4
L	
LABELS AND PAINT	1-34
LIFT	
TWO STAGE LIMITED FREE-LIFT	7-6
LIFT CYLINDER	
TWO STAGE FULL FREE-LIFT	9-20
TWO STAGE LIMITED FREE-LIFT	
J2.00-2.50XM	7-9
J3.00-3.20XM	
D/B 06/2002⇒	7-13
⇒D/B 06/2002	7-11
LOAD BACKREST	1-38
M	
MAIN CYLINDER	
LEFT HAND	
TWO STAGE FULL FREE-LIFT	
⇒S/N B509A-2090Z, ⇒S/N B564A-2046Z	9-11

TABLE OF CONTENTS (Continued)

DESCRIPTION	PAGE
M (continued)	
S/N B509A-2091Z⇒, S/N B564A-2047Z⇒	9-13
RIGHT HAND	
TWO STAGE FULL FREE-LIFT	
⇒S/N B509A-2090Z, ⇒S/N B564A-2046Z	9-15
S/N B509A-2091Z⇒, S/N B564A-2047Z⇒	9-17
THREE STAGE FULL FREE-LIFT	8-16
MAIN LIFT	
THREE STAGE FULL FREE-LIFT	8-8
TWO STAGE FULL FREE-LIFT	9-6
MAST INSTALLATION	6-28
MASTER CYLINDER	5-4
MONOTROL PEDAL	5-16
N	
NON-SUSPENSION SEAT	1-26
O	
OUTER MAST	
THREE STAGE FULL FREE-LIFT	8-2
TWO STAGE FULL FREE-LIFT	9-2
TWO STAGE LIMITED FREE-LIFT	7-2
OVERHEAD GUARD	
⇒S/N A216A-2428	1-12
S/N A216A-2429⇒	1-14
P	
PARK BRAKE	
LEVER ACTUATED	5-10
PUMP CONTACTOR	2-72
S	
SEMI-SUSPENSION SEAT	
⇒D/B 02/2000	1-28
SHIFT LEVER	2-18
SIDE-SHIFT CARRIAGE	10-6
SIDE-SHIFT CYLINDER	10-10
STEER TIRE AND WHEEL	10-2
STEERING CONTACTOR	
⇒S/N A216A-03871W	2-74
STEERING CYLINDER	4-15
STEERING HYDRAULIC	4-12
STEERING MOTOR	
WITH BWI	
⇒D/B 04/1998	4-32
D/B 04/1998⇒S/N A216A-05241Y	4-34
S/N A216A05242Y⇒S/N A216A06134A	4-36
S/N A216A06134A⇒	4-38
WITHOUT BWI	
⇒D/B 04/1998	4-24

TABLE OF CONTENTS (Continued)

DESCRIPTION	PAGE
S (continued)	
D/B 04/1998⇔S/N A216A-05242Y	4-26
S/N A216A05242Y⇔S/N A216A06236A	4-28
S/N A216A06237A⇒.....	4-30
STEERING POD	
D/B 08/1998⇒	4-4
⇒D/B 08/1998	4-2
STROBE LIGHT	10-38
T	
THYRISTOR CONTROL PANEL	
CONTACTOR HYDRAULIC	
⇒S/N A216A-03971W	2-28
SILICON CONTROLLED RECTIFIER HYDRAULIC	
⇒S/N A216A-03971W	2-32
TILT CYLINDER	6-30
TRACTION MOTOR	
72 VOLT/80 VOLT	
S/N A216A-03972W⇒	3-16
⇒S/N A216A-1729	3-10
S/N A216A-1730⇔S/N A216A-2886	3-12
S/N A216A-2887⇔S/N A216A-03971W.....	3-14
TRACTION PANEL	
⇒S/N A216A-03971W	2-56
TRAIL AXLE	4-40
TRANSISTOR ASSEMBLY	
⇒S/N A216A-03971W	2-54
TRANSISTOR CONTROL PANEL	
CONTACTOR HYDRAULIC	
⇒S/N A216A-03971W	2-34
TRANSISTOR HYDRAULIC	
⇒S/N A216A-03971W	2-38
TRANSMISSION AND DIFFERENTIAL	3-6
W	
WIRE HARNESS	
DASH DISPLAY	
PREMIUM WITH TRANSISTOR CONTROLLER	
⇒D/B 11/1997	2-82
FORWARD/REVERSE LEVER	
COLUMN MOUNT.....	2-92
IGNITION SWITCH	
⇒S/N A216A-03971W	2-84
INSTRUMENT CLUSTER	
ECONOMY DISPLAY	
⇒S/N A216A-03971W.....	2-80
PREMIUM DISPLAY WITH CONTACTOR HYDRAULIC	
⇒S/N A216A-03971W.....	2-81
PREMIUM DISPLAY WITH SCR OR TRANSISTOR HYDRAULICS	
⇒S/N A216A-03971W.....	2-79

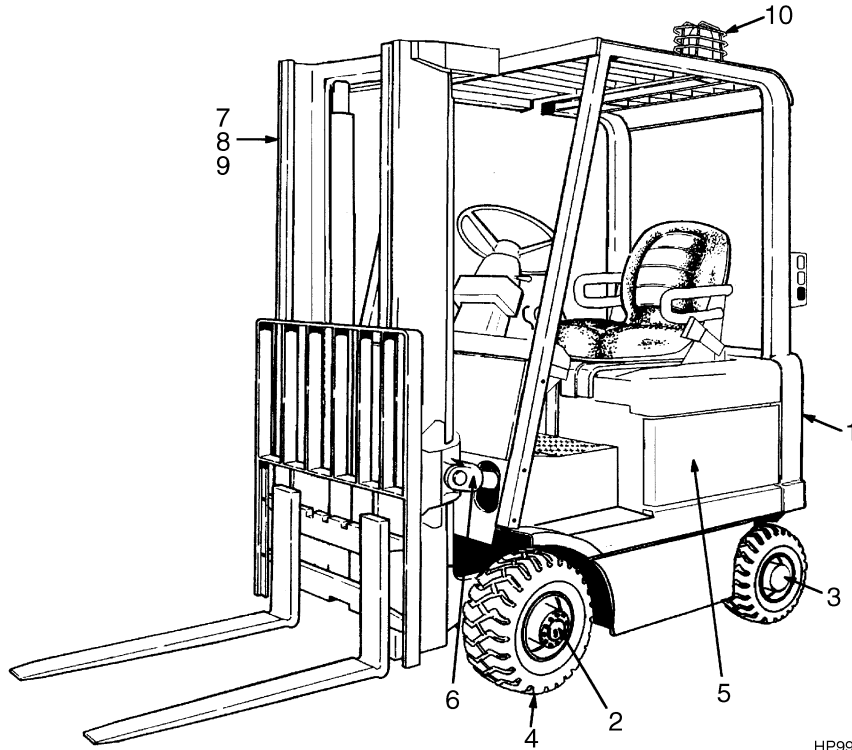
TABLE OF CONTENTS (Continued)

DESCRIPTION	PAGE
W (continued)	
LIGHT	
⇒S/N A216A-03971W	10-41
MAIN	
S/N A216A-03972W⇒	2-90
SCR CONTROL	
⇒S/N A216A-03971W	2-86
TRANSISTOR CONTROL PANEL	
⇒S/N A216A-03971W	2-88
ON-DEMAND STEERING	
⇒S/N A216A-03971W	2-78
WITH TRANSISTOR CONTROLS	
D/B 11/1997⇔S/N A216A-03971W	2-83

SECTION 1
FRAME

DESCRIPTION	PAGE
COUNTERWEIGHT	
D/B 08/1998⇒	1-18
⇒D/B 08/1998	1-16
COVERS	
⇒S/N A216A-03971	1-6
S/N A216A-03972⇒	1-10
FORK	
J2.00-2.50XM.....	1-36
J3.00-3.20.....	1-37
FRAME.....	1-4
FULL SUSPENSION SEAT	
FIRST SHEET	
D/B 02/2000⇒.....	1-30
SECOND SHEET	
D/B 02/2000⇒.....	1-32
GENERAL TRUCK.....	1-2
HOOD	
D/B 08/1998⇒	1-24
⇒D/B 08/1998	1-20
LABELS AND PAINT	1-34
LOAD BACKREST	1-38
NON-SUSPENSION SEAT.....	1-26
OVERHEAD GUARD	
⇒S/N A216A-2428	1-12
S/N A216A-2429⇒	1-14
SEMI-SUSPENSION SEAT	
⇒D/B 02/2000	1-28

GENERAL TRUCK (Figure 1-1)



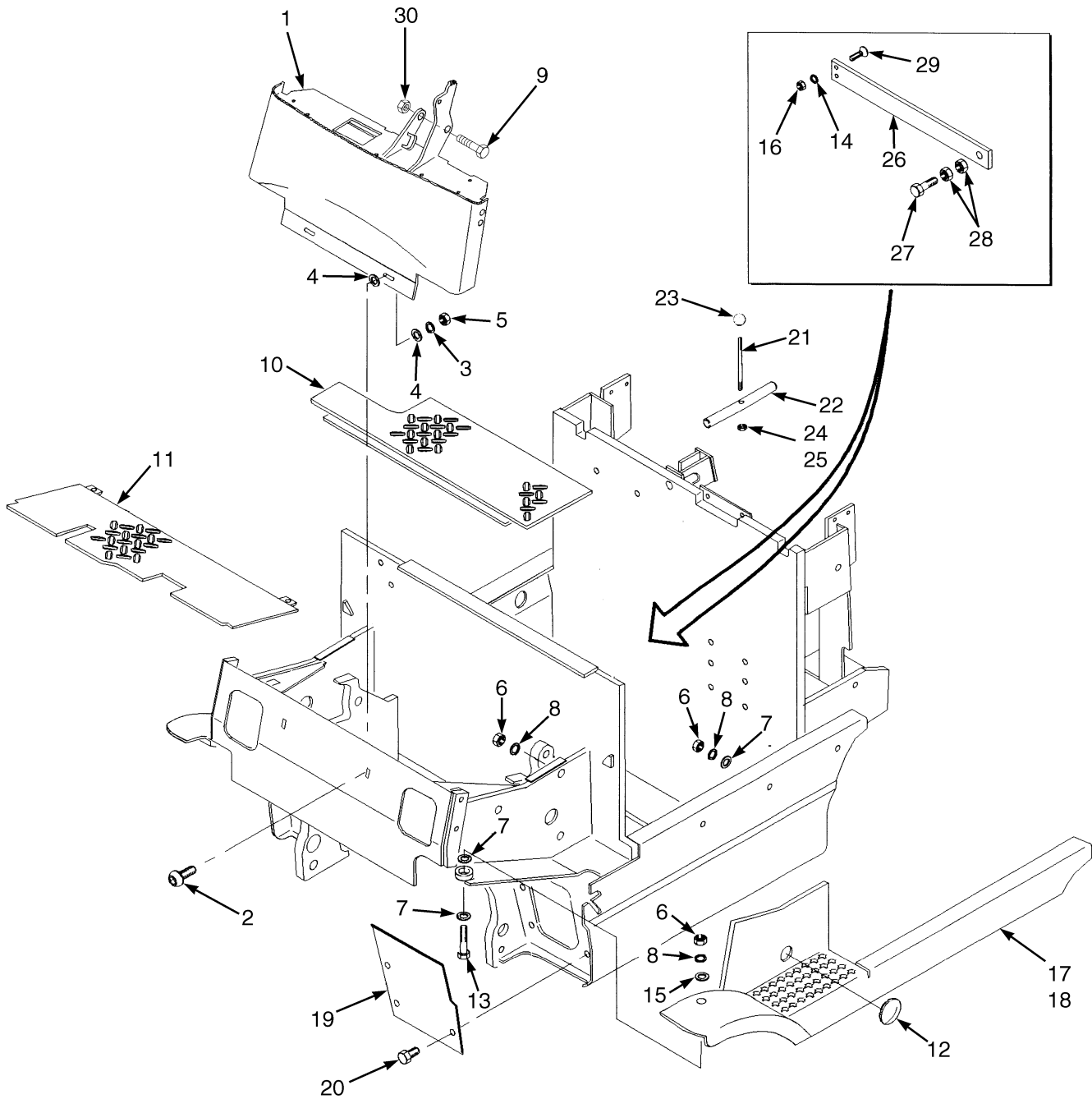
HP990130

ITEM	PART NO.	DESCRIPTION	QTY
1	Frame (☞ Figure 1-2)	1
2	Electrical System (☞ Figure 2-1)	1
3	Drive Unit (☞ Figure 3-1)	1
4	Steering System (☞ Figure 4-1)	1
5	Brake/Accelerator System (☞ Figure 5-1)	1
6	Hydraulic System (☞ Figure 6-1)	1
7	Mast-Two Stage Limited Free-Lift (☞ Figure 7-1)	1
8	Mast-Three Stage Full Free-Lift (☞ Figure 8-1)	1
9	Mast-Two Stage Full Free-Lift (☞ Figure 9-1)	1
10	Options (☞ Figure 10-1)	1

HYSTER

NOTES

FRAME (Figure 1-2)



HP120681

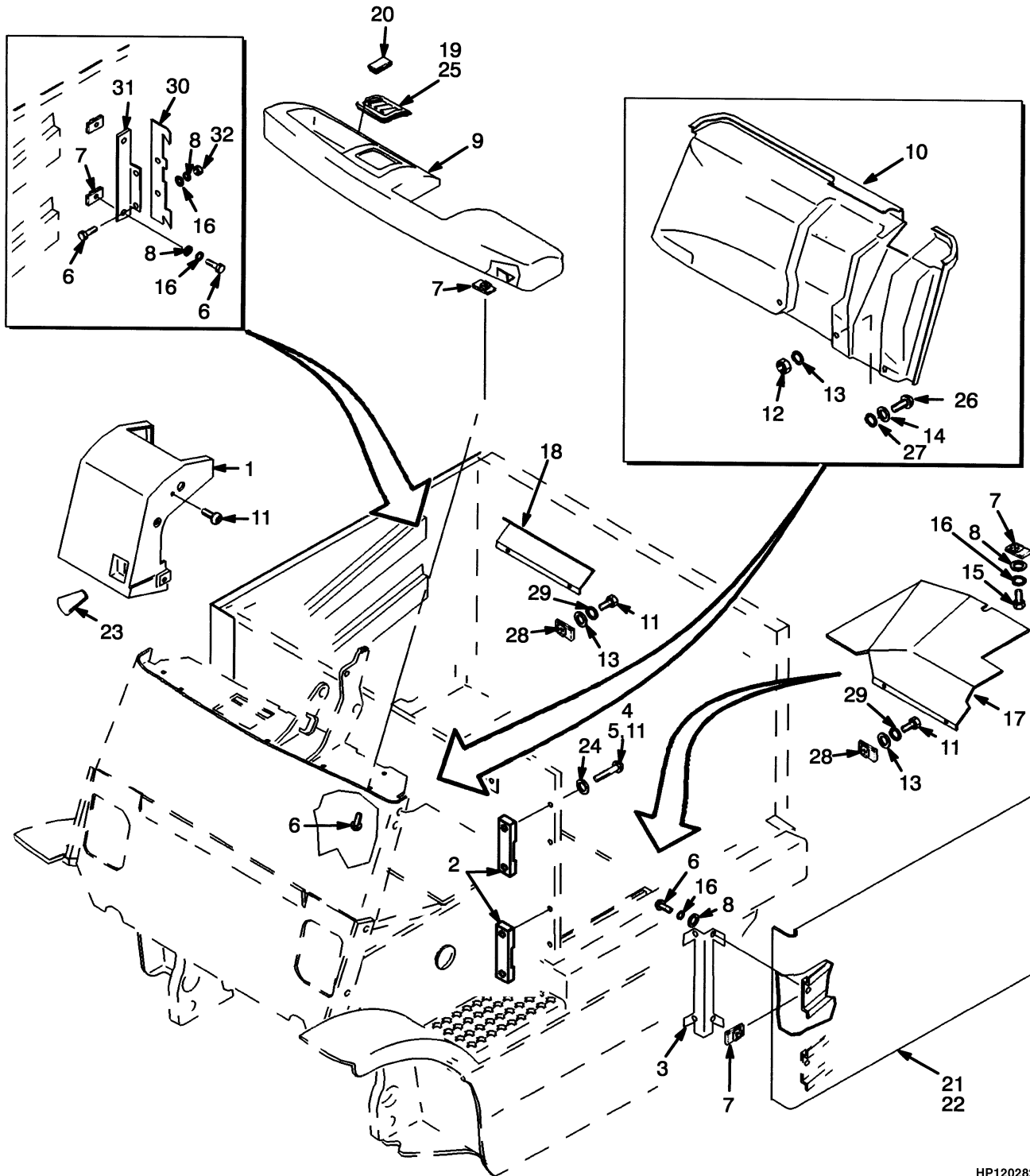
FRAME

ITEM	PART NO.	DESCRIPTION	QTY
1	h 1364710	Cowl.....	1
1	e 1390200	Cowl.....	1
1	d 1461197	Cowl.....	1
2	296167	Capscrew.....	2
3	292681	Lockwasher.....	2
4	320157	Washer.....	4
5	15056	Nut.....	2
6	136692	Nut.....	12
7	320160	Washer.....	14
8	292682	Lockwasher.....	12
9	18494	Capscrew.....	1
10	1385122	Floorplate.....	1
10	878220	Floormat.....	1
11	f 1364622	Floorplate.....	1
11	g 1380562	Floorplate.....	1
15	1350231	Plug.....	2
16	292519	Capscrew.....	2
17	a 1364498	Step (717 mm Battery Compartment) (LH).....	1
17	239503	Nut.....	2
17	292681	Lockwasher.....	2
17	296421	Washer.....	2
17	b 1364499	Step (861 mm Battery Compartment) (LH).....	1
17	ac 1364552	Step (717 mm Battery Compartment) (LH).....	1
17	bc 1364553	Step (861 mm Battery Compartment) (LH).....	1
18	a 1364555	Step (717 mm Battery Compartment) (RH).....	1
18	b 1364556	Step (861 mm Battery Compartment) (RH).....	1
18	ac 1364557	Step (717 mm Battery Compartment) (RH).....	1
18	bc 1364558	Step (861 mm Battery Compartment) (RH).....	1
19	1378906	Plate.....	2
20	316678	Screw.....	6
21	1377420	Rod.....	1
22	1377421	Pin.....	1
23	1380449	Knob.....	1
24	296128	Nut.....	1
25	264134	Sealant.....	AR
26	1379304	Plate.....	1
27	1379324	Capscrew.....	1
28	296136	Nut.....	2
29	296227	Capscrew.....	2
30	169874	Nut.....	1

FOOTNOTES:

- a** 1502 mm (Wheelbase)
- b** 1646 mm (Wheelbase)
- c** Wide Track
- d** S/N A216A-03972W ⇒
- e** D/B 12/1996⇔S/N A216A-03972W
- f** ⇒ S/N A216A-2213
- g** S/N A216A-2214 ⇒
- h** ⇒ D/B 12/1996

COVERS (Figure 1-3) (⇒S/N A216A-03971)



HP120282

COVERS
(⇒S/N A216A-03971)

ITEM	PART NO.	DESCRIPTION	QTY
1	c 1364648	Cover	1
1	d 1385798	Cover	1
2	g 1340218	Catch	4
2	h 878542	Plate	4
3	h 136749	Capscrew.....	4
3	g 1379491	Plate	4
4	g 251099	Adhesive.....	AR
4	h 313828	Nut	8
5	g 296165	Capscrew.....	8
6	h 296159	Capscrew.....	12
6	g 296159	Capscrew.....	20
7	h 325182	Nut	13
7	g 325182	Nut	21
8	h 292680	Lockwasher.....	1
8	g 292680	Lockwasher.....	13
9	i 1364719	Dash	1
9	j 1390203	Dash	1
10	e 1364725	Liner.....	1
10	f 1390321	Liner.....	1
11	h 296166	Capscrew.....	14
11	g 369242	Capscrew.....	10
12	239503	Nut	2
13	292681	Lockwasher.....	6
14	e 320157	Washer	2
14	f 320157	Washer	4
15	292501	Capscrew.....	1
16	h 197068	Washer	1
16	g 197068	Washer	9
17	1383170	Cover (LH)	1
18	1383173	Cover (RH).....	1
19	1382311	Mounting Panel.....	2
20	1382313	Cover	3
21	ag 1364635	Cover (LH)	1
21	bg 1364636	Cover (LH)	1
21	ah 878545	Cover (LH)	1
21	bh 878547	Cover (LH)	1
22	ag 1364637	Cover (RH).....	1
22	bg 1364638	Cover (RH).....	1
22	ah 878546	Cover (RH).....	1
22	bh 878548	Cover (RH).....	1
23	1377483	Knob (RH).....	1
24	296419	Washer	8
25	1382312	Mounting Panel.....	1
26	296167	Capscrew.....	2
27	e 1300117	Washer	2
28	1350282	Retainer	4
29	320158	Washer	4
30	g 1383758	Plate	2
31	g 1383759	Bracket (LH).....	1

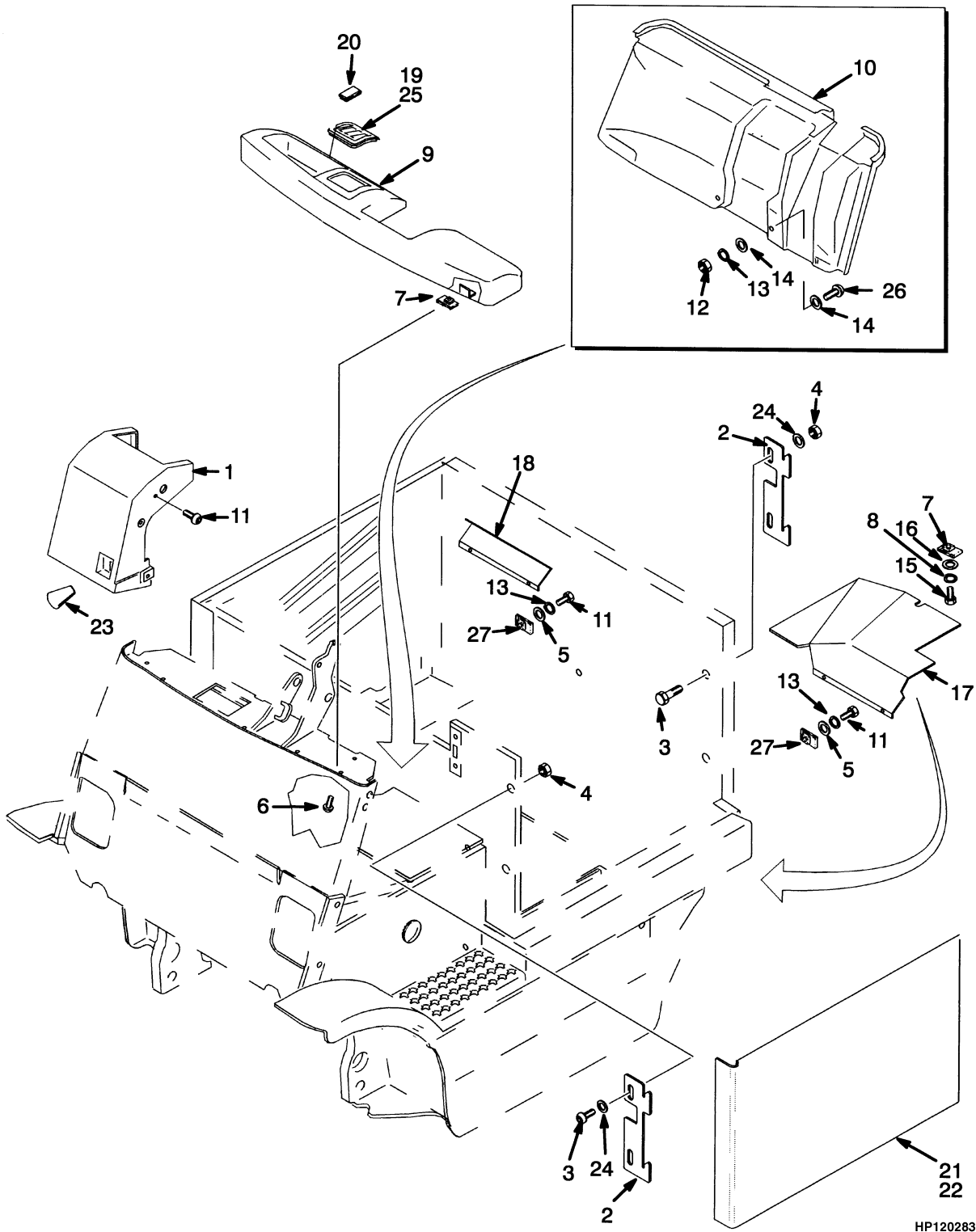
COVERS (⇒S/N A216A-03971)

ITEM	PART NO.	DESCRIPTION	QTY
31	g 1383760	Bracket (RH)	1
32	g 136687	Nut	4

FOOTNOTES:

- a** 717 mm Battery Compartment
- b** 861 mm Battery Compartment
- c** ⇒ S/N A216A-2392
- d** S/N A216A-2393 ⇒
- e** ⇒ S/N A216A-2428
- f** S/N A216A-2429 ⇒
- g** ⇒ D/B 06/1998
- h** D/B 06/1998 ⇒
- i** ⇒ D/B 12/1996
- j** D/B 12/1996 ⇒

COVERS (Figure 1-4) (S/N A216A-03972⇒)



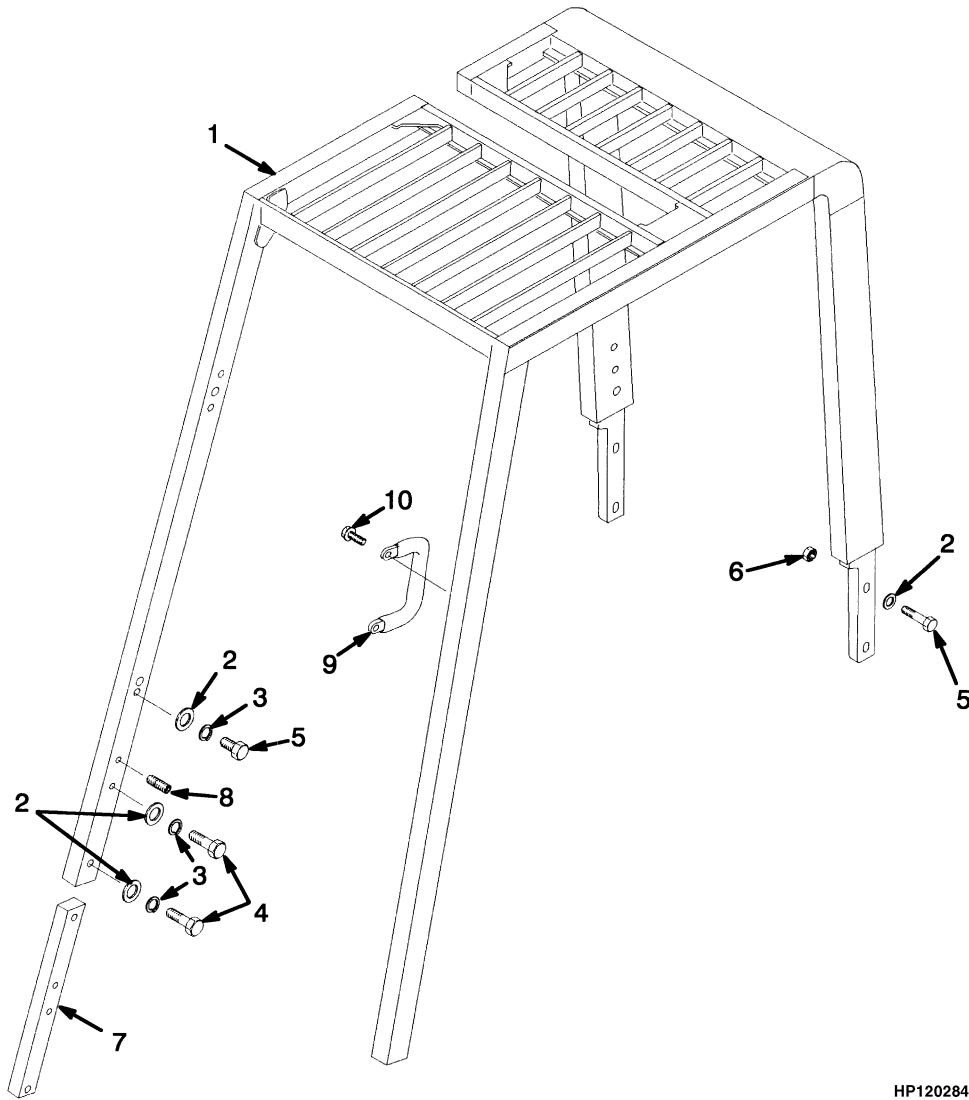
COVERS
(S/N A216A-03972⇒)

ITEM	PART NO.	DESCRIPTION	QTY
1	d 1385798	Cover	1
1	e 1478886	Cover	1
1	cf 1482306	Fastener (Panel)	6
1	cg 369242	Capscrew	4
2	878542	Plate	4
3	136749	Capscrew	4
4	313828	Nut	8
5	320158	Washer	4
6	296159	Capscrew	12
7	325182	Nut	13
8	292680	Lockwasher	1
9	1461070	Dash	1
10	1461198	Liner	1
11	296166	Capscrew	14
12	239503	Nut	2
13	292681	Lockwasher	6
14	320157	Washer	8
15	292501	Capscrew	1
16	197068	Washer	1
17	1383170	Cover (LH)	1
18	1383173	Cover (RH)	1
19	1382311	Mounting Panel	2
20	1382313	Cover	3
21	a 878545	Cover (LH)	1
21	b 878547	Cover (LH)	1
22	a 878546	Cover (RH)	1
22	b 878548	Cover (RH)	1
23	1377483	Knob (RH)	1
24	296419	Washer	8
25	1382312	Mounting Panel	1
26	296167	Capscrew	2
27	1350282	Retainer	4

FOOTNOTES:

- a** 717 mm Battery Compartment
- b** 861 mm Battery Compartment
- c** Not Illustrated
- d** ⇒ D/B 11/2000
- e** D/B 11/2000 ⇒
- f** D/B 11/2000⇔D/B 11/2002
- g** D/B 11/2002 ⇒

OVERHEAD GUARD (Figure 1-5) (⇒S/N A216A-2428)

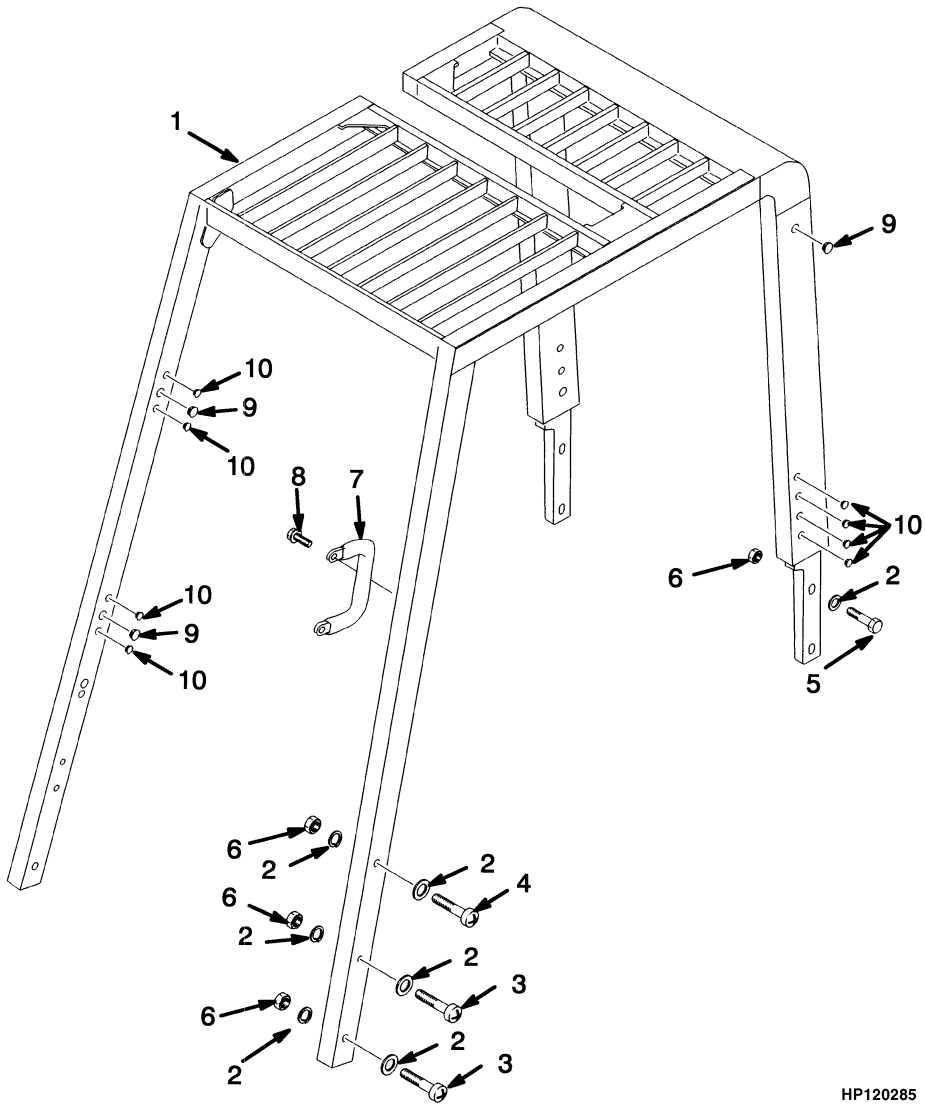


HP120284

OVERHEAD GUARD
(⇒S/N A216A-2428)**KEY:****A: 717 mm Battery Compartment****B: 861 mm Battery Compartment**

ITEM	PART NO.	DESCRIPTION	QTY	
			A	B
1	1364404	Overhead Guard	1	..
1	1364405	Overhead Guard	1
2	320161	Washer	10	10
3	292683	Lockwasher.....	6	6
4	293649	Capscrew.....	4	4
5	293647	Capscrew.....	6	6
6	300937	Locknut	4	4
7	1379469	Plate	2	2
8	302220	Screw.....	2	2
9	1343647	Handle	1	1
10	329067	Screw.....	2	2

OVERHEAD GUARD (Figure 1-6) (S/N A216A-2429⇒)

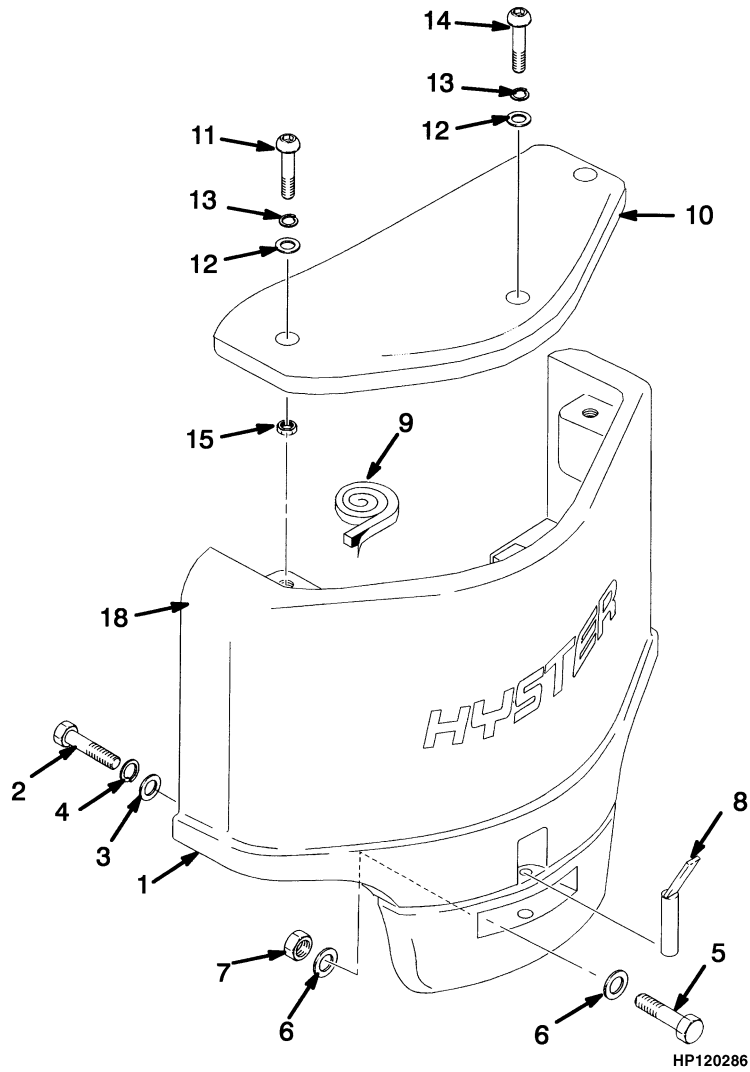


HP120285

OVERHEAD GUARD
(S/N A216A-2429⇒)**KEY:****A: 717 mm Battery Compartment****B: 861 mm Battery Compartment**

ITEM	PART NO.	DESCRIPTION	QTY	
			A	B
1	1386726	Overhead Guard	1	..
1	1386727	Overhead Guard	1
2	320161	Washer	16	16
3	1343990	Capscrew	2	2
4	1354923	Capscrew	4	4
5	293647	Capscrew	4	4
6	1390182	Nut	10	10
7	1343647	Handle	1	1
8	329067	Screw	2	2
9	1363917	Plug	5	5
10	1363916	Plug	14	14

COUNTERWEIGHT (Figure 1-7) (⇒D/B 08/1998)



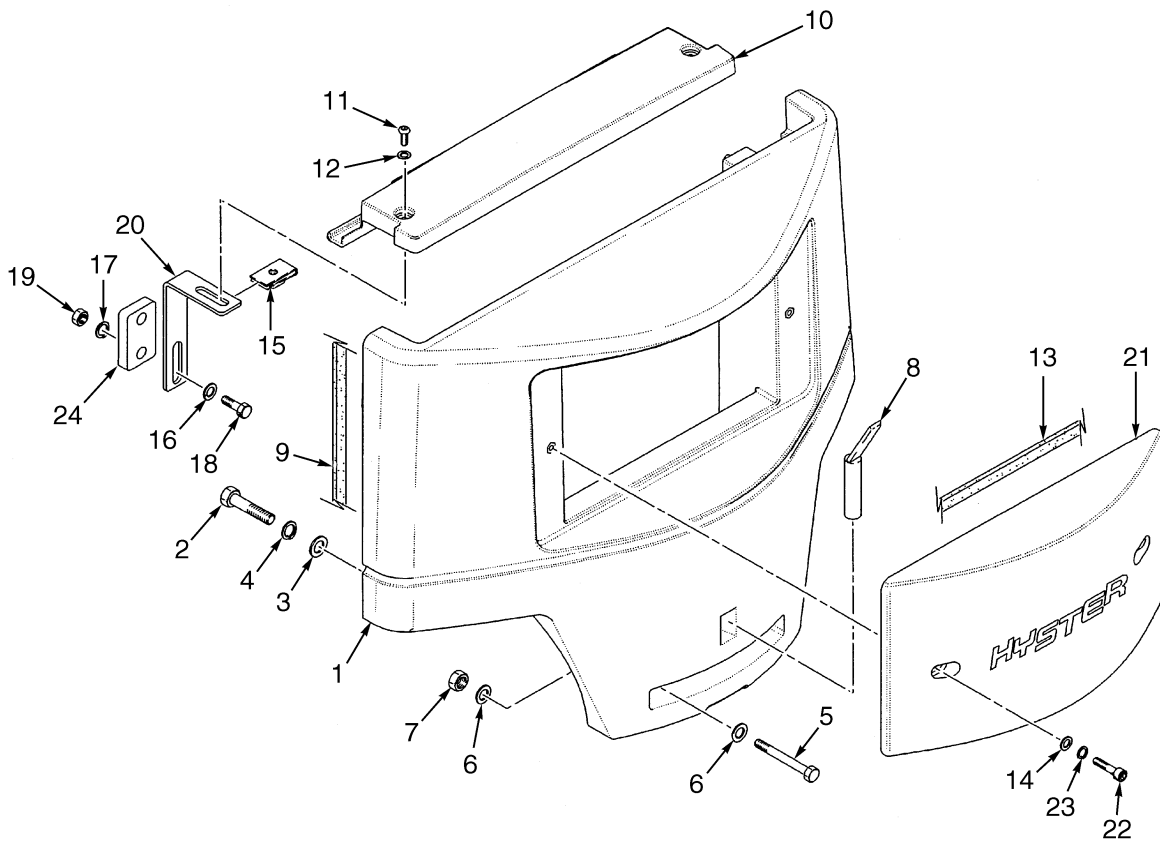
COUNTERWEIGHT
(⇒D/B 08/1998)

ITEM	PART NO.	DESCRIPTION	QTY
1	ab 1364151	Counterweight	1
1	c 1364152	Counterweight	1
2	292584	Capscrew	2
3	320169	Washer	2
4	292687	Lockwasher.....	2
5	292531	Capscrew.....	2
6	320162	Washer	4
7	300937	Locknut	2
8	326347	Tow Pin	1
9	283259	Foam Tape.....	AR
10	1364718	Cover	1
11	1364902	Capscrew.....	2
12	320160	Washer	3
13	292682	Lockwasher.....	3
14	1379470	Capscrew.....	1
15	296128	Nut	2

FOOTNOTES:

- a** J2.00XM-J2.50XM (717 mm Battery Compartment)
- b** J2.50XM-J3.00XM (861 mm Battery Compartment)
- c** J3.20XM (861 mm Battery Compartment)

COUNTERWEIGHT (Figure 1-8) (D/B 08/1998⇒)



HP120665

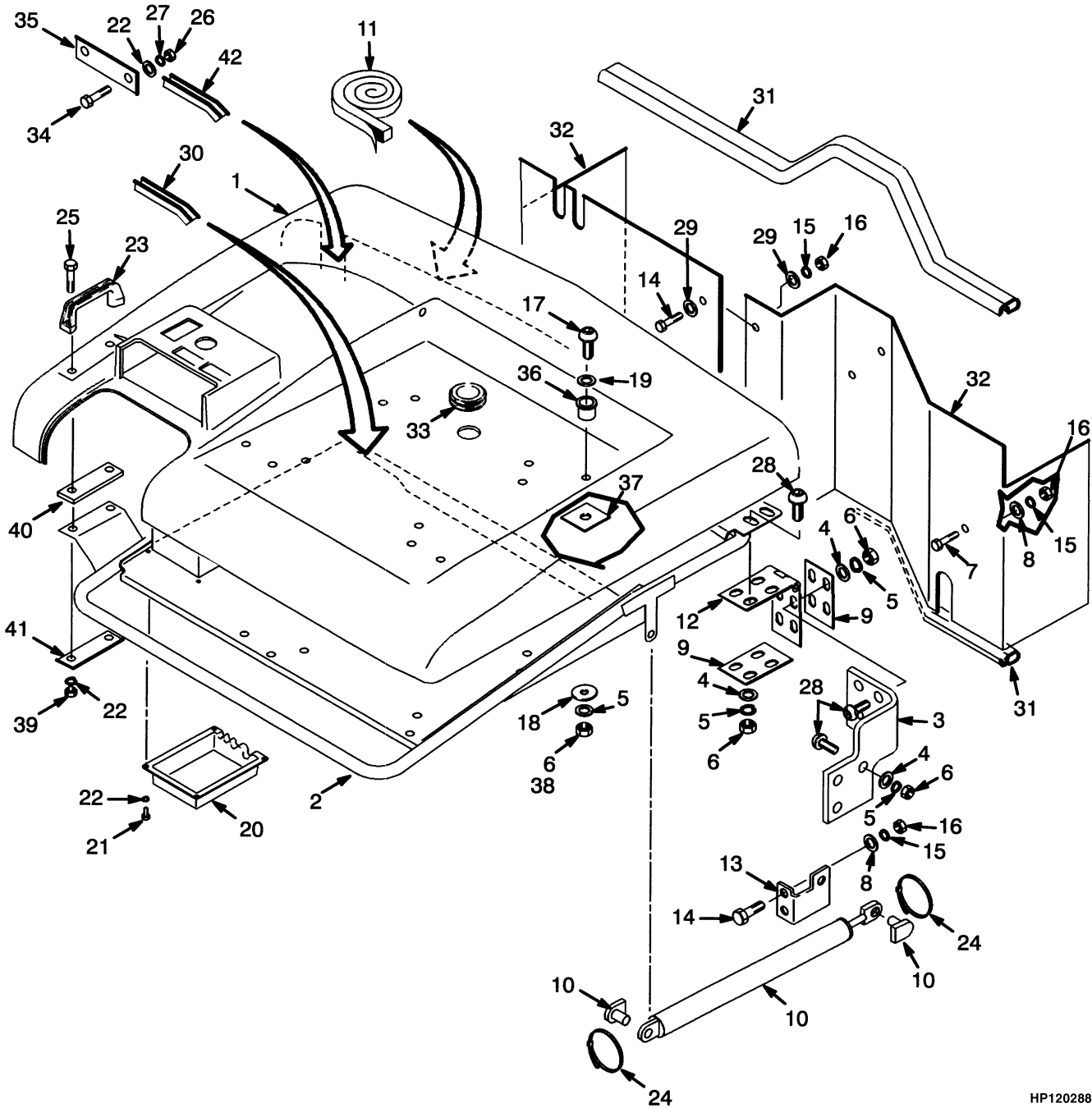
COUNTERWEIGHT
(D/B 08/1998⇒)

ITEM	PART NO.	DESCRIPTION	QTY
1	ab 1460391	Counterweight	1
1	c 1460392	Counterweight	1
2	292584	Capscrew	2
3	320169	Washer	2
4	292687	Lockwasher.....	2
5	292531	Capscrew.....	2
6	320162	Washer	4
7	300937	Locknut	2
8	326347	Tow Pin	1
9	261165	Tape	AR
10	1460535	Cover	1
11	18738	Capscrew.....	2
12	320160	Washer	2
13	326003	Tape	AR
14	15134	Washer	2
15	269200	Nut	2
16	320157	Washer	4
17	292681	Lockwasher.....	4
18	293617	Capscrew.....	4
19	239503	Nut	4
20	1461187	Bracket.....	2
21	1340460	Cover	1
22	46698	Capscrew.....	2
23	15156	Lockwasher.....	2
24	1466505	Spacer (LH)	1

FOOTNOTES:

- a** J2.00XM-J2.50XM (717 mm Battery Compartment)
- b** J2.50XM-J3.00XM (861 mm Battery Compartment)
- c** J3.20XM (861 mm Battery Compartment)

HOOD (Figure 1-9) (⇒D/B 08/1998)



HP120288

Thank you so much for reading.
Please click the “Buy Now!”
button below to download the
complete manual.



After you pay.

You can download the most
perfect and complete manual in
the world immediately.

Our support email:

ebooklibonline@outlook.com