

PARTS MANUAL

YARDMASTER

**HR45H, HR45-25, -31, -36L,
-40LS, -40S
(A227)**

CUSTOMER EDITION

HYSTER

SECTIONS

1	FRAME
2	L/LS FRAME
3	SINGLE FIXED CABIN
4	SINGLE SLIDING CABIN
5	DEMARAIS CABIN
6	DENIZET CABIN
7	ENGINE(S)
8	ELECTRICAL SYSTEM
9	TRANSMISSION
10	DRIVE AXLE
11	STEERING SYSTEM
12	BRAKE SYSTEM
13	HYDRAULIC SYSTEM
14	BOOM
15	L/LS/LSX BOOM
16	WINCH
17	CONTAINER HANDLER B665
18	CONTAINER HANDLER A672
19	STABILIZER

20	LOAD MOMENT LIMITER	
21	OPTIONS	
22	NUMERICAL INDEX	

TABLE OF CONTENTS

DESCRIPTION	PAGE
A	
ACCELERATOR CONTROL VALVE	
FIXED CABIN	
HR45-25, HR45-31, HR45-40S.....	7-19
SLIDING CAB	
HR45-36L, HR45-40LS	7-20
ACCUMULATOR	
HR45-25, HR45-31, HR45-40S	12-12
HR45-36L, HR45-40LS	12-14
AIR CONDITIONER	
WIDE CAB	
S/N A227J-1514⇒	6-16
AIR CONDITIONING	
SINGLE FIXED AND MOVING CAB	
D/B 09/2001⇒	3-14
AIR FILTER.....	7-2
ALARM ASSEMBLY	8-21
AMPLIFIER	
SLIDING CAB	4-28
ANTI ROCKING CONTROL VALVE	
5H 8 FT. 6 IN.	
HR45-36L, HR45-40LS	15-30
HR45-25, HR45-31, HR45-40S	14-38
ANTI TIPPING SWITCH.....	11-4
B	
BASE ELECTRO VALVE	13-49
BATTERY.....	8-19
BOOM	
5H 8 FT. 6 IN. JIB SECTION P1-P2	
HR45-36L, HR45-40LS	15-6
8 FT. 6 IN. JIB SECTION P1-P2-P3	
HR45-25, HR45-31, HR45-40S.....	14-6
9 FT. 6 IN. JIB SECTION P1-P2-P3.....	14-4
BOOM CIRCUIT	
H45-36L, HR45-40LS	13-18
HR45-25, HR45-31, HR45-40S	13-16
BOOM EXTEND AND RETRACT VALVE.....	13-64
BOOM HEAD	
5H 8 FT. 6 IN.	
HR45-36L, HR45-40LS	15-8
HR45-25, HR45-31, HR45-40S	14-8
BOOM HOIST VALVE	
SHEET 1 OF 2.....	13-60
SHEET 2 OF 2.....	13-62
BOOM PIVOT BEARING	
5H 8 FT. 6 IN.	
HR45-36L, HR45-40LS	15-9
HR45-25, HR45-31, HR45-40S	14-9
BRAKE	
S/N A227J-1547⇒	18-18
BRAKE CIRCUIT	

TABLE OF CONTENTS (Continued)

DESCRIPTION	PAGE
B (continued)	
HR45-25, HR45-31, HR45-40S	12-2
HR45-36L, HR45-40LS	12-3
BRAKE CONTROL CIRCUIT	
SLIDING CAB	4-12
HR45-36L, HR45-40LS	12-24
BRAKE OIL RESERVOIR.....	12-16
BUMPERS	
B665.....	17-8
C	
CAB CONNECTING CIRCUIT	
SLIDING CAB	4-22
CAB DOOR	
LEFT HAND	1-8
RIGHT HAND.....	1-10
SLIDING GLASS	
LEFT HAND	5-8
RIGHT HAND	5-6
CAB RAILS	
SLIDING CAB	4-2
HR45-36L, HR45-40LS	2-6
CAB SUPPORT.....	6-12
DEMARAIS CABIN	5-5
FIXED	3-2
CABIN GLASS.....	3-6
WIDE CAB	5-11
CABIN GLASS AND WIPERS	
WIDE CAB	
S/N A227J-1514⇒	6-14
CABLE AND DECALS	
HR45H	16-20
CABLE GUIDE	
HR45H	16-8
CABLE SUPPORT	
5H 8 FT. 6 IN.	
HR45-36L, HR45-40LS	15-10
BOOM 8 FT. 6 IN.	
HR45-25, HR45-31, HR45-40S.....	14-11
BOOM 9 FT. 6 IN.	
HR45-25, HR45-31, HR45-40S.....	14-10
CABLE WINDER	20-3
CHARGE PUMP AND REGULATOR	9-20
CHARGE PUMP FLANGE	
HR45-25, HR45-31, HR45-40S	9-27
CHASSIS BOX	
LEFT HAND	
HR45-25, HR45-31, HR45-40S.....	1-4
HR45-36L, HR45-40LS	2-4
CLUTCH	

TABLE OF CONTENTS (Continued)

DESCRIPTION	PAGE
C (continued)	
FORWARD.....	9-10
FOURTH SPEED.....	9-18
LOW SPEED.....	9-16
REVERSE AND 2ND SHAFT	9-14
THIRD SPEED.....	9-12
COLD CLIMATE KIT.....	21-36
CONSOLE.....	5-27 3-10
CONTROL BOX.....	18-47
CONTROL BOX MOUNTING	18-48
CONTROL CIRCUIT	
HR45H.....	16-2
CONTROL SWITCH	
HR45H.....	16-21
CONTROL SWITCHES.....	8-24
CONTROL VALVE ASSEMBLY	13-58
HR45H.....	16-18
CONTROL VALVE ATTACHING PARTS	
H45-36L, H45-40LS.....	13-40
HR45-25, HR45-31, HR45-40S	13-38
CONTROL VALVE RELIEF SECTION	13-68
CONTROLLER	
APC 100.....	8-18
CONVERTER HOUSING ASSEMBLY	9-2
COOLING CIRCUIT DRIVE AXLE	
H45-36L, HR45-40LS.....	10-20
HR45-25, HR45-31, HR45-40S	10-18
COUNTERWEIGHT	1-3
CYLINDER POWER PILE SLOPE	18-62
D	
DAMPENING	
5H 8 FT. 6 IN.	
HR45-36L, HR45-40LS	15-20
HR45-25, HR45-31, HR45-40S	14-22
DAMPING CYLINDER	
5H 8 FT. 6 IN.	
HR45-36L, HR45-40LS	15-21
HR45-25, HR45-31, HR45-40S	14-23
DERRICKING	
5H 8 FT. 6 IN.	
HR45-36L, HR45-40LS	15-18
HR45-25, HR45-31, HR45-40S	14-20
DERRICKING CYLINDER	
5H 8 FT. 6 IN.	
HR45-36L, HR45-40LS	15-22
HR45-25, HR45-31, HR45-40S	14-24
DERRICKING CYLINDER CONNECTIONS	
H45-36L, HR45-40LS	15-16
DIFFERENTIAL AND PARK BRAKE	

TABLE OF CONTENTS (Continued)

DESCRIPTION	PAGE
D (continued)	
S/N A227J-1501↔S/N A227J-1516	10-2
S/N A227J-1517⇒	10-6
DIRECTIONAL VALVE	
WITHOUT POWER PILE SLOPE	18-66
DISPLAY AND PRINTER	20-4
DOORS AND STORAGE COVERS	
WIDE CAB	
S/N A227J-1514⇒	6-10
DRIVE AXLE AND END DRIVE	
S/N A227J-1501↔S/N A227J-1516	10-10
S/N A227J-1517⇒	10-12
DRIVE AXLE CONNECTIONS	10-14
DRIVE AXLE U-JOINT	10-15
H45-36L, HR45-40LS	10-16
DRIVE TIRE AND WHEEL	
18 X 25 BRIDESTONE	
HR45-36L, HR45-40LS	21-13
18 X 25 GOODYEAR	
HR45-25, HR45-31, HR45-40S	21-5
18 X 25 MICHELIN	
HR45-25, HR45-31, HR45-40S	21-7
18 X 25 PLAIN	
HR45-25, HR45-31, HR45-40S	21-11
18 X 33 BRIDESTONE	
HR45-36L, HR45-40LS	21-6
18 X 33 GOODYEAR	
HR45-36L, HR45-40LS	
S/N A227J-1538⇒	21-9
18 X 33 MICHELIN	
HR45-36L, HR45-40LS	21-8
21 X 25 BRIDESTONE	21-4
21 X 25 GOOD YEAR	21-3
E	
ELECTRIC CONTROL VALVE	
ELECTRONIC INCHING	9-22
ELECTRICAL	
5H 8 FT. 6 IN.	
HR45-36L, HR45-40LS	15-28
HR45-25, HR45-31, HR45-40S	14-37
WIDE CAB	
S/N A227J-1514⇒	6-28
ELECTRICAL SYSTEM	
POWER PILE SLOPE	17-28
WITHOUT POWER PILE SLOPE	17-26
END BEAMS	18-30
ENGINE COMPONENTS	7-8
ENGINE CONNECTIONS	7-7
ENGINE COOLING SYSTEM	7-13

TABLE OF CONTENTS (Continued)

DESCRIPTION	PAGE
E (continued)	
ENGINE MOUNTING	7-4
EXHAUST	7-3
EXTENSION CABLE SUPPORT	18-40
EXTENSION CYLINDER ASSEMBLY	17-22
F	
FAN MOTOR	7-17
FILTER BRAKE RETURN	12-21
FILTER PUMP CIRCUIT HR45-36L, HR45-40LS	9-28
FILTER TRANSMISSION OIL HR45-25, HR45-31, HR45-40S	9-26
FIREWALL PLATE	5-26 3-22
FITTINGS	
BOOM AND ATTACHMENT	
B665	17-9
FLANGE	
INTERMEDIATE	
S/N A227J-1547⇒	18-16
FLANGE COUPLING	
S/N A227J-1547⇒	18-24
FLOOR PLATES AND COVERS	5-2
FIXED	3-4
SLIDING CAB	
WIDE	
S/N A227J--1514⇒	6-6
WIDE FIXED CAB	
S/N A227J-1514⇒	6-2
FRAME	
HR45-25, HR45-31, HR45-40S	1-2
HR45-36L, HR45-40LS	2-2
FUEL HEATER	
S/N A227J-1547⇒	21-38
FUSE BOX	7-10
FUSE PLATE	8-22
G	
GEAR HOUSING	
S/N A227J-1547⇒	18-14
GEAR SHAFT HOUSING	
S/N A227J-1547⇒	18-22
GENERAL RETURN CIRCUIT	
HR45-25, HR45-31, HR45-40S	13-23
SLIDING CAB	4-14
HR45-36L, HR45-40LS	13-24

TABLE OF CONTENTS (Continued)

DESCRIPTION	PAGE
H	
HOOD	
HR45-25, HR45-31, HR45-40S	1-6
HYDRAULIC CIRCUIT	
CEC	20-2
MAIN	18-50
ROTATOR.....	18-52
SIDE-SHIFT	18-58
TWISTLOCKS.....	18-56
HYDRAULIC CIRCUIT STABILIZER	
HR45-40LS	19-10
HR45-40S	19-11
HYDRAULIC CONTROL CIRCUIT	
HR45-40LS	19-2
HR45-40S	19-4
HYDRAULIC CONTROL VALVE	
HYDRAULIC INCHING	9-24
HYDRAULIC COOLING SYSTEM	
BRAKE OIL	13-53
HYDRAULIC OIL	13-52
SHEET 1 OF 2	
⇒S/N A227-1511	13-4
SHEET 2 OF 2	
S/N A227-1512⇒	13-6
HYDRAULIC FILTER.....	13-56
HYDRAULIC LIFTING JACK	21-34
HYDRAULIC MOTOR SUPPORT	
HR45-36L, HR45-40LS.....	2-12
HYDRAULIC PENDULAR CYLINDER	
WITH POWER PILE SLOPE	17-39
HYDRAULIC RADIATOR.....	13-8
HYDRAULIC STOP KIT	
B665	
OPTIONAL	17-4
HYDRAULIC SUPPLY CIRCUIT	
HR45-40LS	19-12
HR45-40S	19-13
HYDRAULIC SYSTEM	
PILE SLOPE	18-57
TELESCOPING	18-54
WITH POWER PILE SLOPE	17-32
WITHOUT POWER PILE SLOPE.....	17-30
HYDRAULIC TUBING	
5H 8 FT. 6 IN.	
HR45-36L, HR45-40LS	15-4
BOOM 8 FT. 6 IN.	
HR45-25, HR45-31, HR45-40S.....	14-34
BOOM 9 FT. 6 IN.	
HR45-25, HR45-31, HR45-40S.....	14-30
HYDRAULIC TUBING TELESCOPING	
BOOM 9 FT. 6 IN.	
HR45-25, HR45-31, HR45-40S.....	14-14

TABLE OF CONTENTS (Continued)

DESCRIPTION	PAGE
H (continued)	
HYDRAULIC VALVE	
5H 8 FT. 6 IN.	
HR45-36L, HR45-40LS	15-32
HR45-25, HR45-31, HR45-40S	14-40
I	
INSTRUMENT PANEL	8-14
WIDE CAB	
S/N A227J-1514⇒	6-24
J	
JUNCTION BLOCK	
BOOM AND ATTACHMENT	13-48
JOYSTICK	13-46
L	
LABELS	1-14
LEAK OIL CIRCUIT	
HR45-25, HR45-31, HR45-40S	13-26
HR45-36L, HR45-40LS	13-28
SLIDING CAB	4-16
LIGHTS	
5H 8 FT. 6 IN.	
HR45-36L, HR45-40LS	15-35
HR45-25, HR45-31, HR45-40S	14-42-10
HR45-36L, HR45-40LS	8-12
LIMIT SWITCH	
27 DEGREES	
HR45-31, HR45-40S	1-16
HR45-25, HR45-31, HR45-40S	1-12
HR45-36L, HR45-40LS	2-14
SLIDING CAB	4-26
LIMIT SWITCH MOUNTING	
HR45-40LS	19-14
HR45-40S	19-16
LOAD SENSING CIRCUIT	
HR45-25, HR45-31, HR45-40S	13-32
HR45-36L, HR45-40LS	13-33
SLIDING CAB	4-20
LOAD SENSING SWITCH	13-45
LOWER LIMIT SWITCH	
HR45H	16-16
M	
MAIN PUMP	13-71
MAIN PUMP ATTACHING PARTS	13-42
MAIN PUMP CIRCUIT	13-9
MAIN PUMP CONTROL VALVE	13-70
MAIN VALVE	

TABLE OF CONTENTS (Continued)

DESCRIPTION	PAGE
M (continued)	
SPREADER TYPE.....	17-16
MAINFRAME	
B665.....	17-2
O	
OIL COOLER SOLENOID VALVE.....	13-54
OIL RETURN MANIFOLD	13-14
P	
PARK BRAKE	
⇒S/N A227J-1526.....	12-8
S/N A227J-1527⇒.....	12-10
PARK BRAKE CIRCUIT	
SLIDING CAB	
HR45-36L, HR45-40LS	12-22
OPTION.....	4-11
PARK BRAKE CONTROL VALVE	
HR45-36L, HR45-40LS.....	12-20
SLIDING CAB	4-34
PARK BRAKE SOLENOID VALVE	12-17-30
PEDAL ARRANGEMENT	3-16
FIXED CAB	
HR45-25, HR45-31, HR45-40S.....	5-22
SLIDING CAB	
HR45-36L, HR45-40LS	5-24
WIDE	
S/N A227J-1514⇒.....	6-22
WIDE FIXED CAB	
S/N A227J-1514⇒	6-20
PILOT CIRCUIT	
HR45-25, HR45-31, HR45-40S	13-21
HR45-36L, HR45-40LS.....	13-22
SLIDING CAB	4-18
PILOT LINES	
SLIDING CAB	
HR45-36L, HR45-40LS	13-34
PRESSURE SWITCH	
H45-36L, HR45-40LS	13-20
PULLEY BLOCK	
HR45H	16-6
PUMP DRIVE AND SHAFT.....	9-6
PUMP DRIVE SHAFT	13-44
R	
RADIATOR	
S/N A227J-1501↔S/N A227J-1511	7-15
S/N A227J-1512⇒.....	7-16
RELAY	
IC 5	8-26

TABLE OF CONTENTS (Continued)

DESCRIPTION	PAGE
R (continued)	
RELAY AND PRINTED CIRCUIT	
IC 4, IC 2.....	8-27
RESERVOIRS	5-30 3-24
ROOF COWLING	8-16
ROTATION VALVE ASSEMBLY	
DUAL SPEED	17-14
ROTATOR ASSEMBLY	
⇒S/N A227J-1546	18-4
S/N A227J-1547⇒	18-6
WITH POWER PILE SLOPE	17-20
WITHOUT POWER PILE SLOPE	17-18
ROTATOR BRAKE RELEASE VALVE	18-61
ROTATOR FRAME.....	18-3
ROTATOR MOTOR AND TRANSMISSION ASSEMBLY	
B665.....	17-10
ROTATOR MOTOR TRANSMISSION	
⇒S/N A227J-1546	18-8
S/N A227J-1547⇒	18-12
ROTATOR VALVE	18-60
ROTATOR VALVE ASSEMBLY	
WITH POWER PILE SLOPE	17-40
S	
SEAT.....	6-13 3-18
DEMARAIS CABIN	5-10
SERVICE BRAKE	
OIL COOLED BRAKE	
⇒S/N A227J-1526	12-4
S/N A227J-1527⇒	12-6
SERVICE BRAKE CONTROL VALVE	
HR45-36L, HR45-40LS.....	12-19
SLIDING CAB	4-32
SIDE-SHIFT CABLE SUPPORT	
⇒S/N A227J-1546	18-41
S/N A227J-1547⇒	18-42
SIDE-SHIFT CYLINDER	18-59-12
SIDE-SHIFT CYLINDER VALVE	18-68
SLIDING BLOCKS	
5H 8 FT. 6 IN.	
HR45-36L, HR45-40LS	
⇒S/N A227J-1546	15-24
S/N A227J-1547⇒	15-26
HR45-25, HR45-31, HR45-40S	
⇒S/N A227J-1546	14-26
S/N A227J-1547⇒	14-28
SLIDING CAB CIRCUIT	
HR45-36L, HR45-40LS.....	13-36
SLIDING FRAME.....	4-4
HR45-36L, HR45-40LS.....	2-10

TABLE OF CONTENTS (Continued)

DESCRIPTION	PAGE
S (continued)	
SOLENOID VALVE	
SLIDING CAB	13-514-29
SOLENOID VALVE BANK	
HR45-40LS	19-6
HR45-40S	19-8
SOLENOID VALVE GROUP	
HR45H	16-17
SOUND REDUCTION	21-32
SPEED CONTROL	7-12
SPREADER CONTROL VALVE	18-64
SPREADER FRAME	
WITH POWER PILE SLOPE	18-28
WITHOUT POWER PILE SLOPE	18-29
SPREADER LIGHTS	18-46
SPREADER VALVE	13-66
STABILIZER CYLINDER	19-18
STABILIZER MOUNTING	19-17
STEER AXLE	
HR45-25	11-10
HR45-31, H45-36L, HR45-40LS, HR45-40S	11-12
STEER AXLE ASSEMBLY	
HR45-25	11-6
HR45-31, HR45-36L, HR45-40LS, HR45-40S	11-8
STEER TIRE AND WHEEL	
18 X 25 BRIDGESTONE	
HR45-25, HR45-31, HR45-40S	
S/N A227J-1538⇒	21-31
18 X 25 BRIDGESTONE	
HR45-25, HR45-31, HR45-40S	
⇒S/N A227J-1537	21-30
18 X 25 GOOD YEAR	
HR45-25, HR45-31, HR45-40S	
⇒S/N A227J-1537	21-18
S/N A227J-1538⇒	21-19
18 X 25 LISSE	
S/N A227J-1538⇒	21-28
18 X 25 MICHELIN	
HR45-24, HR45-31, HR45-40S	
S/N A227J-1538⇒	21-23
HR45-25, HR45-31, HR45-40S	
⇒S/N A227J-1537	21-22
18 X 25 PLAIN	
HR45-25, HR45-31, HR45-40S	21-27
18 X 33 BRIDGESTONE	
HR45-36L, HR45-40LS	
S/N A227J-1538⇒	21-21
18 X 33 BRIDGESTONE	
HR45-36L, HR45-40LS	
⇒S/N A227J-1537	21-20
18 X 33 GOODYEAR	

TABLE OF CONTENTS (Continued)

DESCRIPTION	PAGE
S (continued)	
HR45-36L, HR45-40LS S/N A227J-1538⇒	21-26
18 X 33 MICHELIN HR45-36L, HR45-40LS ⇒S/N A227J-1537	21-24
S/N A227J-1538⇒	21-25
21 X 25 BRIDGESTONE ⇒S/N A227J-1537	21-16
S/N A227J-1538⇒	21-17
21 X 25 GOOD YEAR ⇒S/N A227J-1537	21-14
S/N A227J-1538⇒	21-15
STEERING CIRCUIT H45-36L, HR45-40LS	13-12
HR45-25, HR45-31, HR45-40S	13-10
SLIDING CAB	4-24
STEERING COLUMN ⇒S/N A227J01513	11-2
STORAGE COVERS	5-4
D/B 09/2001⇒	3-20
⇒D/B 09/2001	3-19
SUPPORT SLIDING FRAME	4-6
HR45-36L, HR45-40LS	2-8
SUPPORT SLIDING MOTOR	4-8
T	
TELESCOPING 5H 8 FT. 6 IN. HR45-36L, HR45-40LS ⇒S/N A227J-1546	15-11
S/N A227J-1547⇒	15-12
BOOM 9 FT. 6 IN. HR45-25, HR45-31, HR45-40S ⇒S/N A227J-1546	14-12
S/N A227J-1547⇒	14-13
TELESCOPING CIRCUIT HR45-25, HR45-31, HR45-40S	13-30
HR45-36L, HR45-40LS	13-31
TELESCOPING TRANSMISSION DINAMIC OIL S/N A227J-1547⇒	18-20
MOTOR COMER S/N A227J-1547⇒	18-26
THROTTLE CONTROL VALVES	7-18
TOOL KIT	21-40
TORQUE CONVERTER AND DRIVE PLATE	9-8
TRANSMISSION CASE AND REAR COVER	9-4
TRANSMISSION TELESCOPING MOTOR	18-32
TUBING TELESCOPIC CYLINDER	

TABLE OF CONTENTS (Continued)

DESCRIPTION	PAGE
T (continued)	
5H 8 FT. 6 IN. HR45-36L, HR45-40LS	15-14
BOOM 8 FT. 6 IN. HR45-24, HR45-31, HR45-40S S/N A227J-1547⇒	14-17
HR45-25, HR45-31, HR45-40S	14-19
⇒S/N A227J-1546	14-16
TWIST LOCK ARRANGEMENT	17-34
TWIST LOCK ASSEMBLY	18-37-36
TWIST LOCK CYLINDER	17-38
TWIST LOCK INDICATOR LIGHTS 5H 8 FT. 6 IN. HR45-36L, HR45-40LS	15-34
HR45-25, HR45-31, HR45-40S	14-41
V	
VENTILATION SINGLE FIXED AND MOVING CAB ⇒D/B 09/2001	3-12
SLIDING CAB HR45-36L, HR45-40LS	5-20
WIDE FIXED CAB HR45-25, HR45-31, HR45-40S ⇒S/N A227J-1512	5-16
S/N A227J-1513⇒	5-18
W	
WEAR PADS B665	17-6
⇒S/N A227J-1546	18-34
S/N A227J-1547⇒	18-36
WINCH HR45H	16-12
WINCH ATTACHING PARTS HR45H ⇒S/N A227J-1546	16-9
S/N A227J-1547⇒	16-10
WINCH CIRCUIT HR45H	16-4
WINCH REDUCTION GEAR HR45H	16-14
WINDSHIELD WIPERS	3-8
FIXED CAB HR45-25, HR45-31, HR45-40S	5-12
SLIDING CAB HR45-36L, HR45-40LS	5-14
WIRE HARNESS CAB HR45-25, HR45-31, HR45-40S	8-4

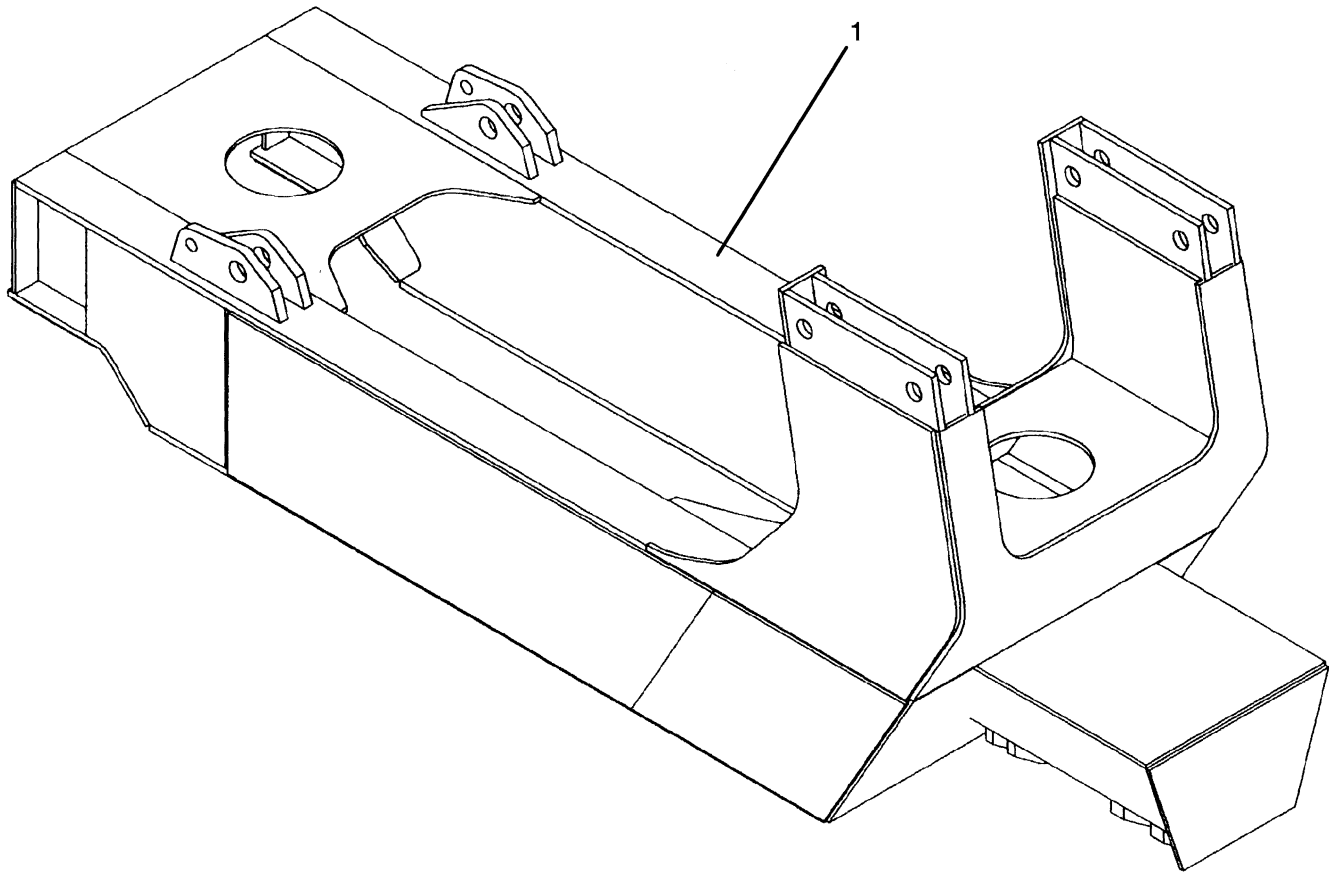
TABLE OF CONTENTS (Continued)

DESCRIPTION	PAGE
W (continued)	
ENGINE	8-6
MAIN	18-44
MAIN FRAME	
HR45-25, HR45-31, HR45-40S	8-2
HR45-36L, HR45-40LS	8-3
SENSORS	18-45
SLIDING CAB	4-10
TRANSMISSION.....	8-8

SECTION 1
FRAME

DESCRIPTION	PAGE
CAB DOOR	
LEFT HAND	1-8
RIGHT HAND.....	1-10
CHASSIS BOX	
LEFT HAND	
HR45-25, HR45-31, HR45-40S.....	1-4
COUNTERWEIGHT	1-3
FRAME	
HR45-25, HR45-31, HR45-40S	1-2
HOOD	
HR45-25, HR45-31, HR45-40S	1-6
LABELS.....	1-14
LIMIT SWITCH	
27 DEGREES	
HR45-31, HR45-40S	1-16
HR45-25, HR45-31, HR45-40S	1-12

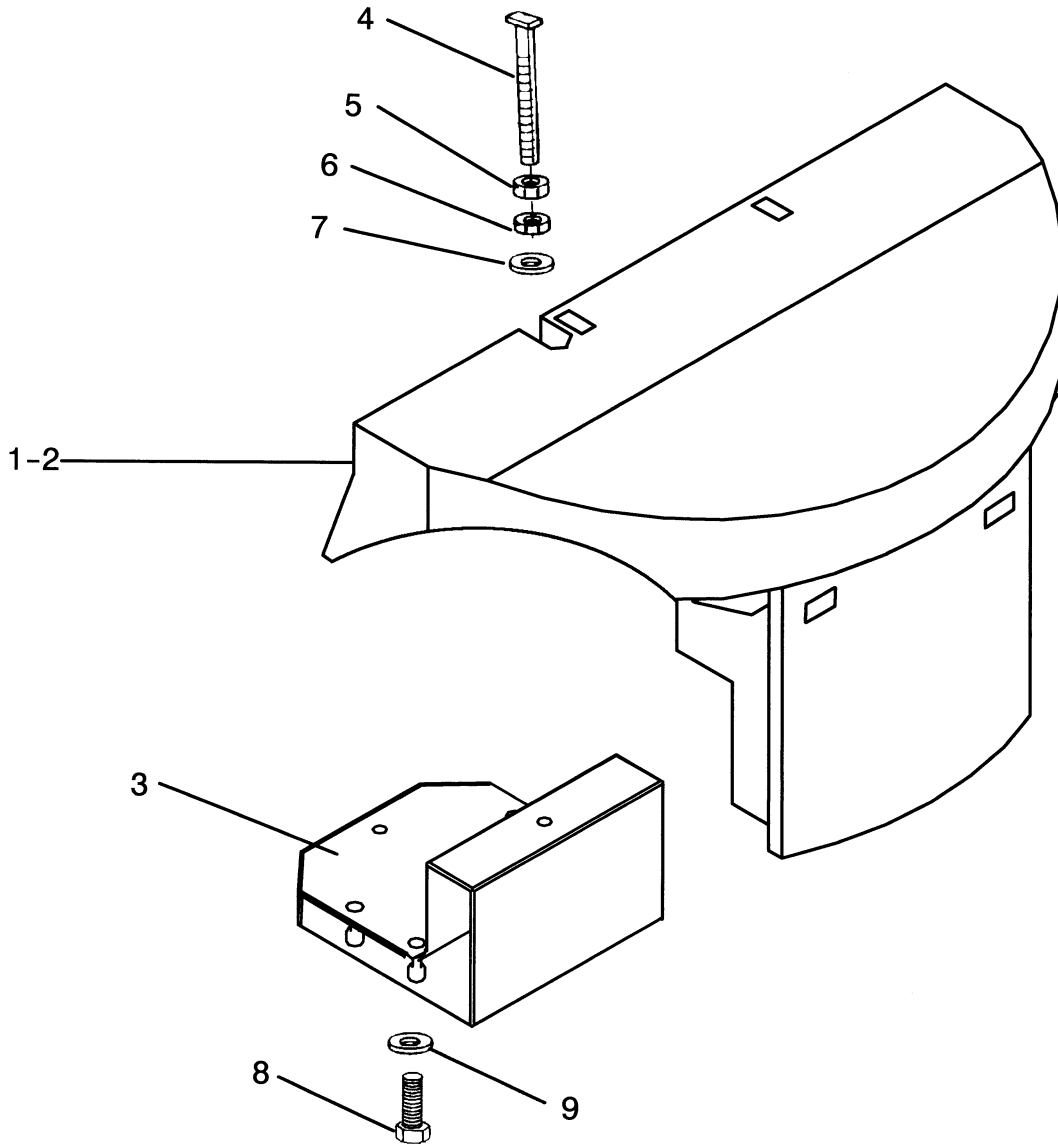
FRAME (Figure 1-1) HR45-25, HR45-31, HR45-40S



HP120599

ITEM	PART NO.	DESCRIPTION	QTY
1	1468878	Frame	1
1	1488109	Frame (RS)	1

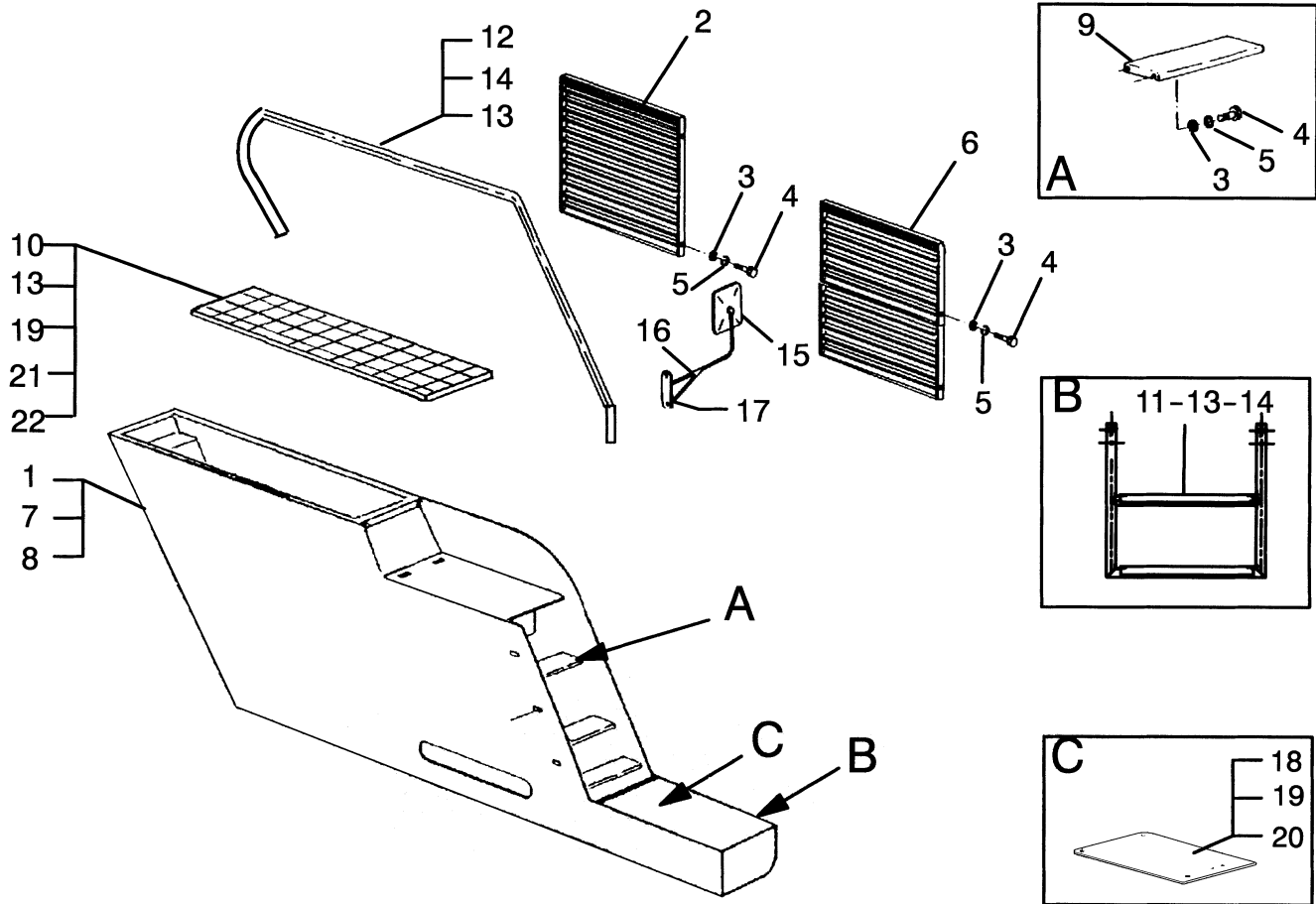
COUNTERWEIGHT (Figure 1-2)



HP120600

ITEM	PART NO.	DESCRIPTION	QTY
1	1468953	Counterweight (HR45-25).....	1
1	1471912	Counterweight (HR45-31, HR45-36L, HR45-40LS).....	1
2	1471913	Counterweight (HR45-40S)	1
3	1468954	Counterweight (HR45H)	1
4	1468955	Bolt	4
5	1468956	Nut	4
6	1468957	Nut	4
7	1468958	Washer	4
8	1468959	Capscrew.....	4
9	1468960	Washer	4

CHASSIS BOX (Figure 1-3) LEFT HAND HR45-25, HR45-31, HR45-40S

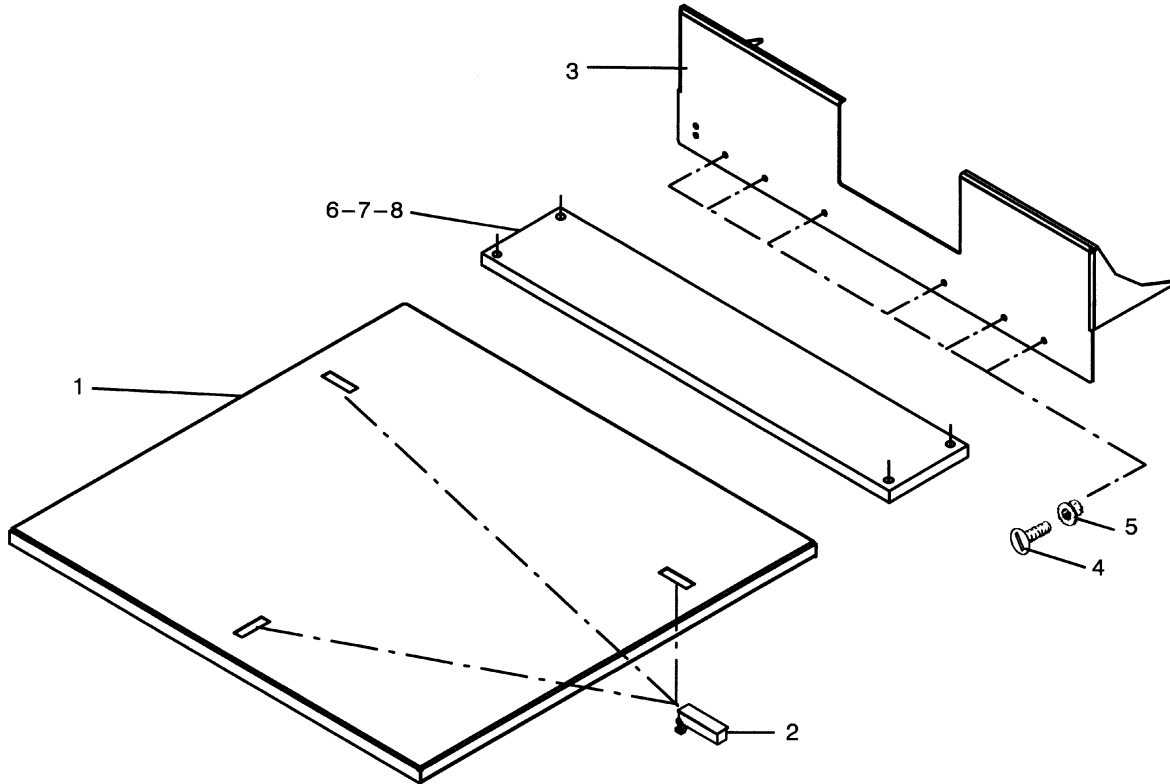


HP120601

**CHASSIS BOX
LEFT HAND
HR45-25, HR45-31, HR45-40S**

ITEM	PART NO.	DESCRIPTION	QTY
1	1468879	Housing	1
2	1468880	Grill	1
3	1468345	Washer	14
4	136681	Capscrew.....	14
5	1468114	Washer	14
6	1468884	Grill	1
7	1488545	Washer	10
8	1468886	Bolt	20
9	1468887	Step	2
10	1468888	Bolt	9
11	1475742	Step	1
12	1527450	Rail	1
13	1468893	Nut.....	18
14	1468894	Screw.....	18
15	1468895	Mirror.....	1
16	1468896	Bracket.....	1
17	1468897	Screw.....	2
18	1468898	Plate	1
19	1468899	Screw.....	4
20	1468900	Catch	4
21	1468901	Fitting.....	4
22	1468902	Grill	1

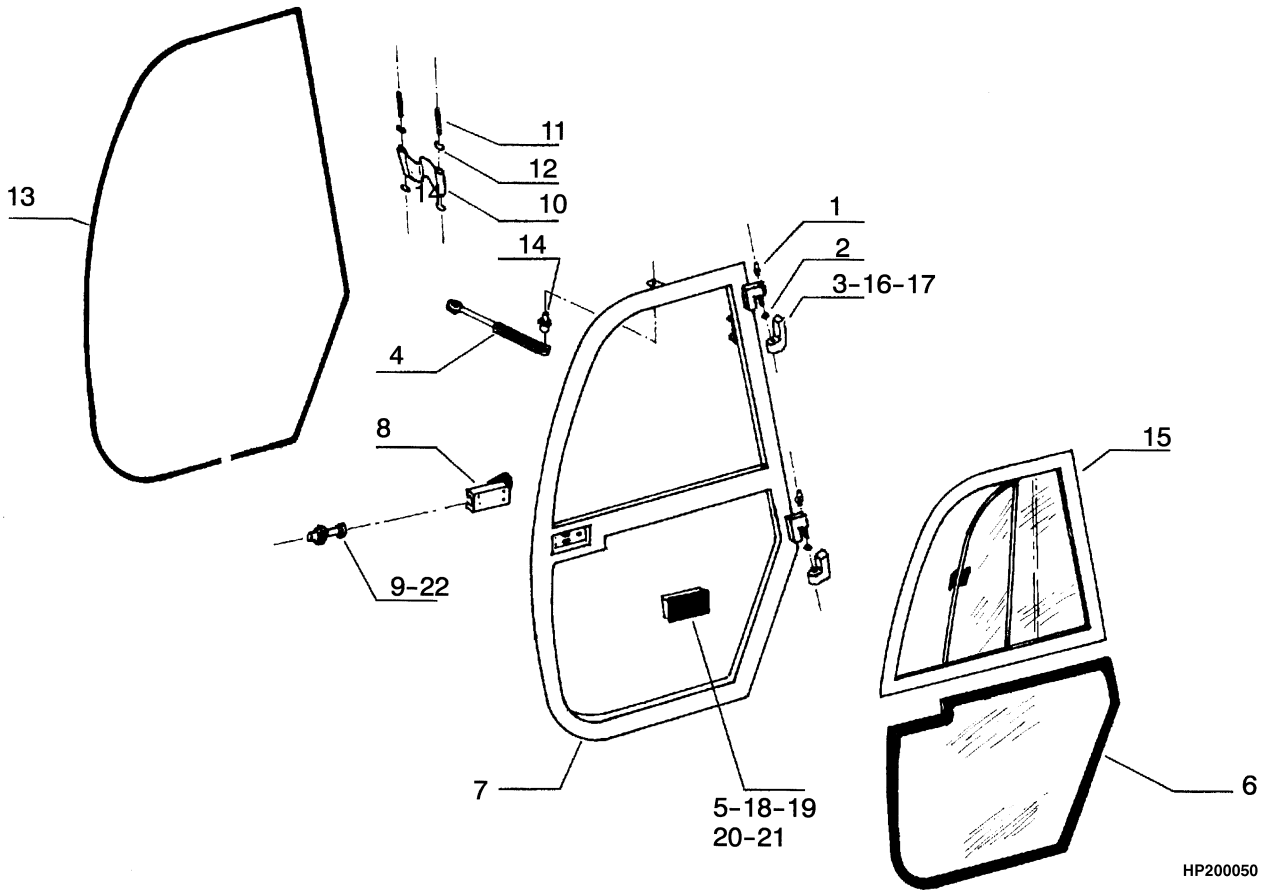
HOOD (Figure 1-4) HR45-25, HR45-31, HR45-40S



HP120602

ITEM	PART NO.	DESCRIPTION	QTY
1	1488548	Cover	1
2	1468934	Catch	3
3	1480298	Cover	1
4	1468224	Bolt	6
5	1468223	Nut	6
6	1488549	Plate	1
7	1488550	Bolt	4
8	1468115	Nut	4

CAB DOOR (Figure 1-5) LEFT HAND

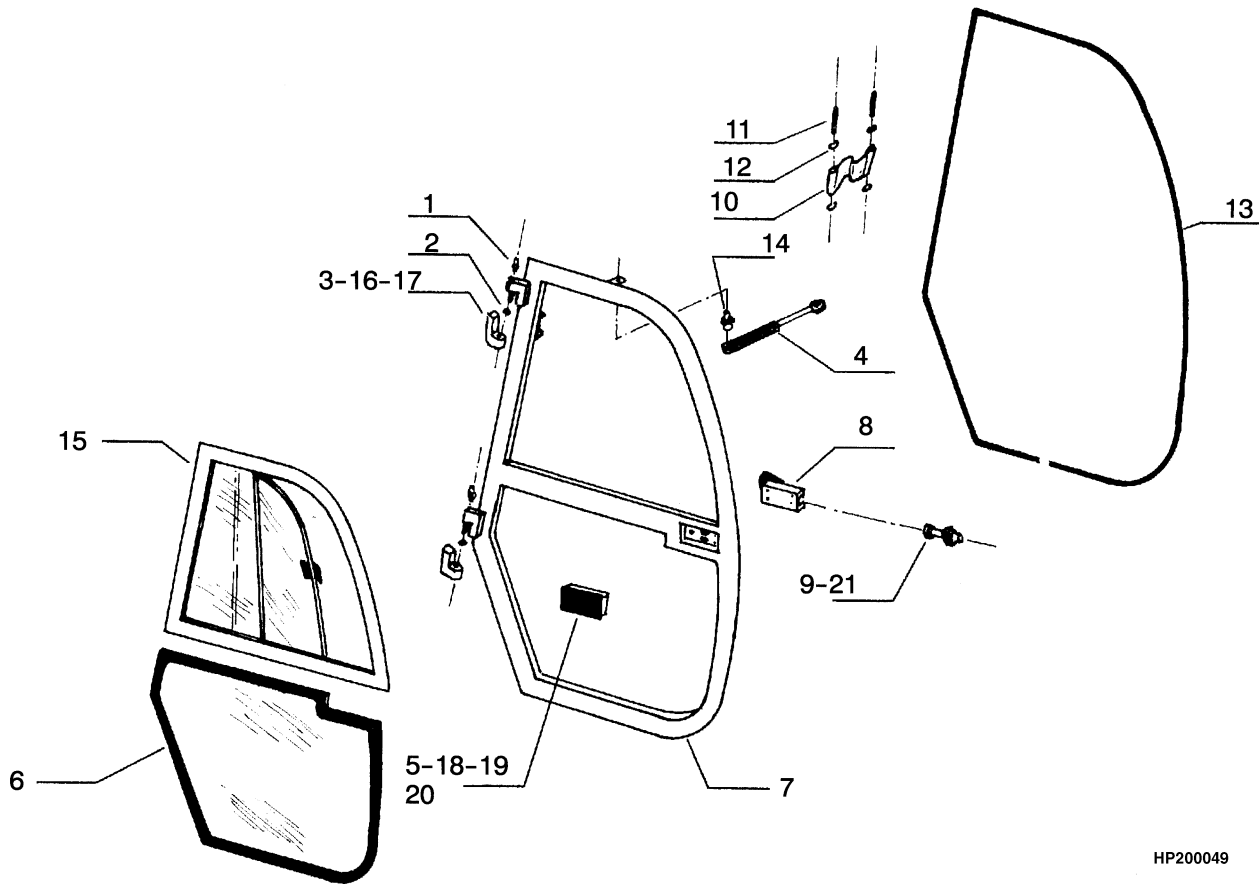


HP200050

**CAB DOOR
LEFT HAND**

ITEM	PART NO.	DESCRIPTION	QTY
	1475949	Door Assembly (LH)	1
1	1469058	Fitting.....	2
2	1469059	Washer	2
3	1469060	Hinge (LH)	2
4	1469061	Cylinder	1
5	1469062	Handle	1
6	1475946	Glass (LH)	1
7	1475947	Frame	1
8	1469065	Lock (LH)	1
9	1469066	Catch	1
10	1469067	Strap.....	1
11	1469068	Pin	1
12	1469069	Ring.....	4
13	1469070	Seal	1
14	1469071	Link.....	2
15	1475948	Glass	1
16	1469073	Bolt	4
17	1469074	Washer	4
18	1469075	Bolt	2
19	1469076	Bolt	2
20	1469077	Bolt	1
21	1469078	Washer	1
22	1469079	Washer	1

**CAB DOOR (Figure 1-6)
RIGHT HAND**

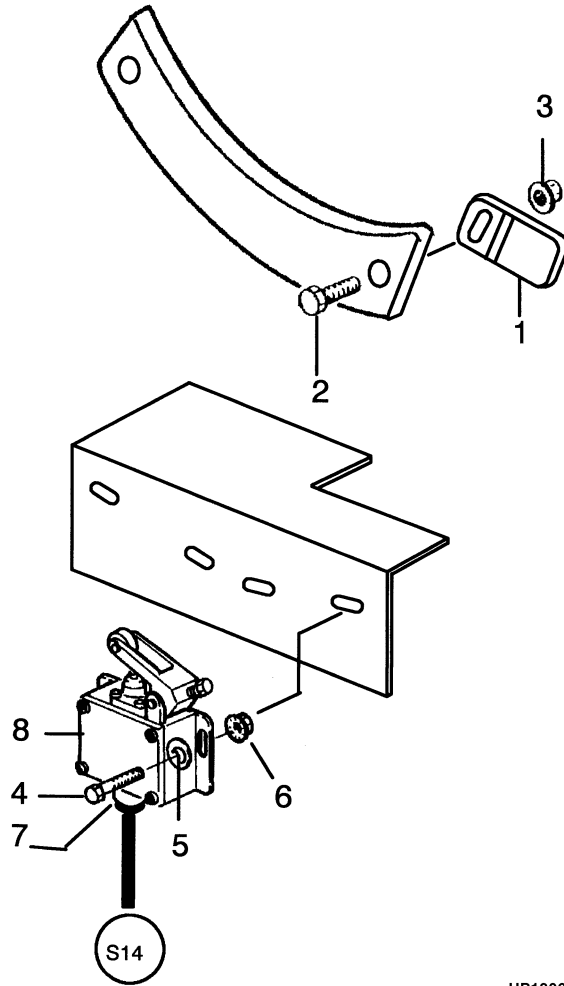


HP200049

**CAB DOOR
RIGHT HAND**

ITEM	PART NO.	DESCRIPTION	QTY
	1477173	Door Assembly (RH).....	1
1	1469058	Fitting.....	2
2	1469059	Washer.....	2
3	1469084	Hinge.....	2
4	1469061	Cylinder.....	1
5	1469062	Handle.....	1
6	1476395	Glass (RH).....	1
7	1476396	Frame.....	1
8	1476398	Lock.....	1
9	1469066	Catch.....	1
10	1469067	Strap.....	1
11	1469068	Pin.....	1
12	1469069	Ring.....	4
13	1469070	Seal.....	1
14	1469071	Link.....	2
15	1476400	Glass.....	1
16	1469073	Bolt.....	4
17	1469074	Washer.....	4
18	1469075	Bolt.....	2
19	1469076	Bolt.....	2
20	1469077	Bolt.....	1
21	1469079	Washer.....	1

LIMIT SWITCH (Figure 1-7) HR45-25, HR45-31, HR45-40S



HP120603

ITEM	PART NO.	DESCRIPTION	QTY
1	1480287	Cam	1
2	1471897	Bolt	1
3	1470942	Nut	1
4	292501	Capscrew	2
5	1468159	Washer	2
6	1468262	Nut	2
6	1470943	Switch	1
7	1470601	Gland	1

Thank you so much for reading.
Please click the “Buy Now!”
button below to download the
complete manual.



After you pay.

You can download the most
perfect and complete manual in
the world immediately.

Our support email:

ebooklibonline@outlook.com