

PARTS MANUAL

YARD MASTER

**HR45-48EC
(A228)**

CUSTOMER EDITION

HYSTER

SECTIONS

1	FRAME
2	SINGLE FIXED CABIN
3	ENGINE(S)
4	ELECTRICAL SYSTEM
5	TRANSMISSION
6	DRIVE AXLE
7	STEERING SYSTEM
8	BRAKE SYSTEM
9	HYDRAULIC SYSTEM
10	BOOM
11	ATTACHMENTS
12	OPTIONS
13	NUMERICAL INDEX

TABLE OF CONTENTS

DESCRIPTION	PAGE
A	
AIR CONDITIONER	12-4
AIR FILTER.....	3-8
ANTI-TIPPING SWITCH.....	7-18
B	
BATTERY.....	4-28
BOOM CABLE SUPPORT	
HR-48-EC	10-32
BOOM HEAD.....	10-28
BRAKE ACCUMULATOR	8-14
BRAKE CIRCUIT	
S/N A228-01501↔S/N A228-01504	8-2
S/N A228-1505⇒.....	8-4
BRAKE FILTER	8-13
BRAKE OIL TANK	8-15
BRAKE PRESSURE SENSOR	8-12
BRAKE VALVE	
S/N A228-01501↔S/N A228-01509	8-10
S/N A228-01510⇒.....	8-11
BUMPERS.....	11-6
C	
CABIN	
S/N A228-01501↔S/N A228-01509	2-8
S/N A228-01510⇒.....	2-12
CABIN DOOR	
S/N A228-01501↔S/N A228-01509	2-22
S/N A228-01510⇒.....	2-24
CABIN SUPPORT	
S/N A228-01501↔S/N A228-01509	2-2
S/N A228-01510⇒.....	2-4
CLUTCH	
FORWARD AND SECOND.....	5-16
REVERSE AND FIRST.....	5-12
THIRD.....	5-20
CONSOLE	
RIGHT HAND	
S/N A228-01501↔S/N A228-01509	4-16
S/N A228-01510⇒.....	4-18
CONTROL VALVE ATTACHING PARTS.....	9-16
COOLING	3-10
BRAKE OIL	9-4
HYDRAULIC OIL	9-2
COUNTERWEIGHT	1-8
COWLING	1-7
CYLINDER ATTACHING PARTS	
HR-45-EC	10-18
HR-48-EC	10-34

TABLE OF CONTENTS (Continued)

DESCRIPTION	PAGE
D	
DAMPENING CYLINDER.....	10-43
DAMPENING CYLINDER ATTACHING PARTS	10-38
DASHBOARD	
RIGHT HAND	
S/N A228-01501⇔S/N A228-01509	4-20
DASHBOARD CONTROL	
S/N A228-01501⇔S/N A228-01509	4-12
DASHBOARD FRAME	
S/N A228-01501⇔S/N A228-01509	2-18
S/N A228-01510⇒.....	2-20
DECALS	12-8
DERRICKING CYLINDER.....	10-42
DERRICKING CYLINDER ASSEMBLY	10-36
DERRICKING CYLINDER WITH BEAM	10-40
DIFFERENTIAL.....	6-4
DIPSTICK TUBE	5-39
DRIVE AXLE	6-2
E	
ELECTRICAL CIRCUIT	
HR-45-EC	10-12
HR-48-EC	10-20
ELECTRICAL CONTROL.....	5-44
ELECTRO VALVE ASSEMBLY.....	9-18
ELECTRO VALVE ATTACHING PARTS	9-20
ELECTRO VALVE PARK BRAKE	
S/N A228-01510⇒.....	9-24
END BOOM	
HR-45-EC	10-14
HR-48-EC	10-24
END BOOM CABLE SUPPORT	
HR-48-EC	
S/N A228-01501⇔S/N A228-01509	10-30
ENGINE AND ATTACHING PARTS	3-4
EXHAUST.....	3-7
EXTENSION CYLINDER AND ATTACHING PARTS.....	11-24
F	
FIRE EXTINGUISHER	12-3
FLOOR PLATES.....	2-6
FRAME.....	1-2
FUEL CIRCUIT.....	3-13
FUEL TANK.....	3-12
FUSE PLATE	
S/N A228-01501⇔S/N A228-01509	4-24
S/N A228-01510⇒.....	4-26

TABLE OF CONTENTS (Continued)

DESCRIPTION	PAGE
H	
HAND PUMP	7-6
S/N A228-01510⇒	7-8
HEATER	
S/N A228-01501↔S/N A228-01509	2-42
HOOD AND FENDERS	1-4
HORN	4-8
HYDRAULIC CIRCUIT	
HR-45-EC	10-6
HR-48-EC	10-2
HYDRAULIC CIRCUIT CONVERTER	5-2
HYDRAULIC FILTER	9-27
HYDRAULIC LIFTING BLOCK	9-26
HYDRAULIC LIFTING JACK	12-6
HYDRAULIC LINES	5-40
HYDRAULIC OIL TANK	9-30
HYDRAULIC SPREADER CONNECTION	
HR-45-EC	11-10
HR-48-EC	11-12
HYDRAULIC STEERING CIRCUIT	7-11
HYDRAULIC TANK CIRCUIT	9-28
HYDRAULIC TUBING	
HR-48-EC	10-10
I	
INCHING VALVE	5-34
INDICATOR LIGHT ASSEMBLY	11-35
INDUCTION TRANSMITTER	5-38
INPUT SHAFT	5-8
INSTRUMENT PANEL	
S/N A228-01510⇒	4-14
INTERMEDIATE BOOM	
HR-48-EC	10-22
J	
JOYSTICK	
S/N A228-01501↔S/N A228-01509	2-35
S/N A228-01510⇒	2-36
JOYSTICK ATTACHING PARTS	
S/N A228-01501↔S/N A228-01509	2-34
L	
LEAK OIL CIRCUIT	9-8
LIFTING CIRCUIT	9-10
LIGHTS	4-6
LINER	
INTERIOR COVERS	
S/N A228-01510⇒	2-16
S/N A228-01501↔S/N A228-01509	2-15

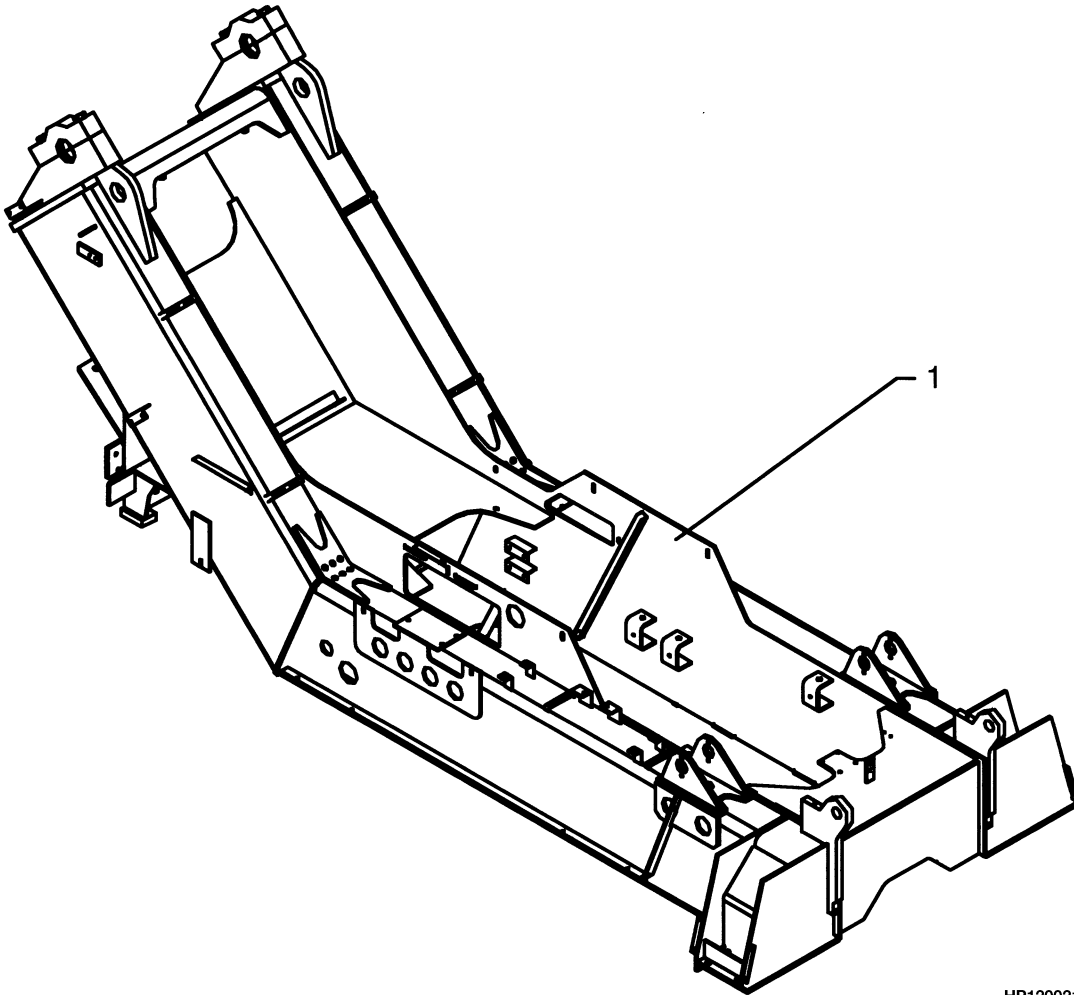
TABLE OF CONTENTS (Continued)

DESCRIPTION	PAGE
M	
MAIN BOOM.....	10-26
MAIN BOOM CABLE SUPPORT	
HR-45-EC	10-16
MAIN FRAME	11-2
MAIN VALVE.....	11-20
O	
OUTPUT SHAFT	5-23
P	
PARK BRAKE	5-42
PARK BRAKE CIRCUIT	8-18
PARK BRAKE CYLINDER.....	8-8
PARK BRAKE LEVER	8-21
PARK BRAKE PRESSURE VALVE	8-22
PEDALS	
S/N A228-01501↔S/N A228-01509	2-38
S/N A228-01510⇒.....	2-40
PENDULAR TWIST LOCK	
S/N A228-01501↔S/N A228-01509	11-26
S/N A228-01510⇒.....	11-28
PLANETARY DRIVE.....	6-6
POWER TAKE-OFF.....	5-24
POWER TAKE-OFF COVER	5-25
PRESSURE REGULATOR.....	5-31
PRESSURE SWITCH.....	9-6
R	
RELAY PLATE	
S/N A228-01501↔S/N A228-01509	4-21
S/N A228-01510⇒.....	4-22
RETURN CIRCUIT	9-14
ROTATOR ASSEMBLY	11-22
ROTATOR MOTOR	11-14
ROTATOR VALVE	11-18
S	
SEAT	
S/N A228-01510⇒.....	2-32
SEAT ASSEMBLY	
S/N A228-01501↔S/N A228-01509	2-30
SERVICE BRAKE.....	8-6
SIDE-SHIFT CYLINDER	11-16
SPEED SENSOR	5-36
STEERING AXLE	7-14
STEERING AXLE ASSEMBLY	7-12
STEERING COLUMN.....	7-2
S/N A228-01510⇒.....	7-4
STEERING CYLINDER.....	7-10
STOP ASSEMBLY	11-8

TABLE OF CONTENTS (Continued)

DESCRIPTION	PAGE
T	
TIE ROD PIN	7-16
TIRE AND WHEEL	12-2
TRANSMISSION ATTACHING PARTS	5-11 5-4
TRANSMISSION FILTER	5-32
TRANSMISSION HOUSING	5-10
TRANSMISSION VALVE	5-28
TRANSMISSION VALVE ATTACHING PARTS	5-26
TWIST LOCK	
S/N A228-01501↔S/N A228-01509	11-30
S/N A228-01510⇒	11-32
TWIST LOCK CYLINDER	11-34
U	
UNIVERSAL SHAFT	6-8
V	
VENTILATION	
S/N A228-01510⇒	2-44
W	
WEAR PADS	11-4
WINDOW	
REAR	
S/N A228-01501↔S/N A228-01509	2-26
S/N A228-01510⇒	2-28
WIRE HARNESS	
ENGINE	3-2
MAIN	
S/N A228-01501↔S/N A228-01509	4-2
S/N A228-01510⇒	4-4
S/N A228-01510⇒	1-10
WIRING ROOF PLATE	
S/N A228-01501↔S/N A228-01509	4-9
S/N A228-01510⇒	4-10

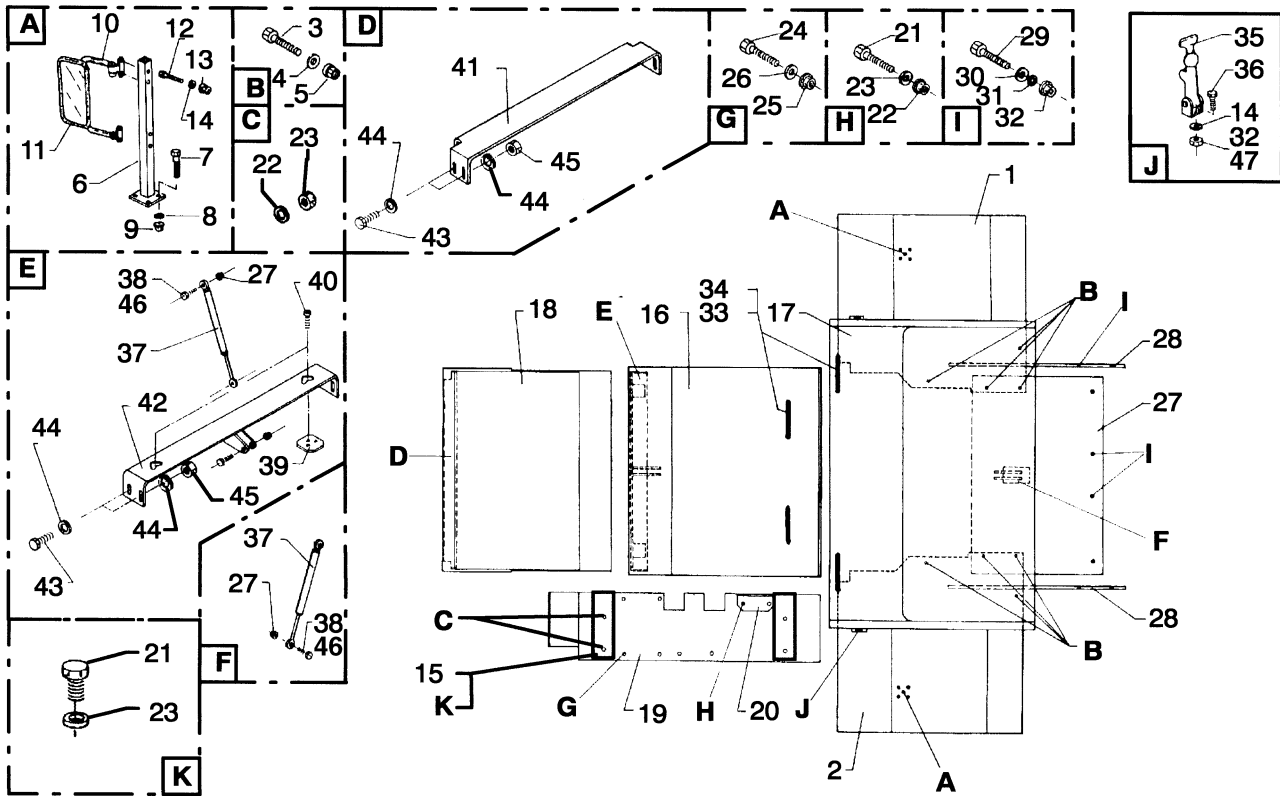
FRAME (Figure 1-1)



HP120021

ITEM	PART NO.	DESCRIPTION	QTY
1	1472154	Frame	1

HOOD AND FENDERS (Figure 1-2)



HP120022

HOOD AND FENDERS

ITEM	PART NO.	DESCRIPTION	QTY
1	1472155	Fender	1
2	1472157	Fender	1
3	1471127	Bolt	12
4	1472158	Washer	24
5	1468174	Nut	12
6	1472159	Support.....	2
7	1472165	Bolt	8
8	a 1468907	Washer	8
8	b 1469191	Washer	8
9	1470955	Nut	8
10	1472166	Support.....	2
11	1472167	Mirror	2
12	1472203	Bolt	8
13	1472204	Nut	8
14	a 1469191	Washer	10
15	1472205	Support.....	2
16	1472206	Cover	1
17	1472208	Cover	1
18	a 1472209	Cover	1
18	b 1519073	Cover	1
19	1472210	Cover	1
20	1472211	Plate	1
21	1468371	Nut	6
22	1468893	Nut	6
23	1469149	Washer	10
24	a 1468946	Bolt	4
24	b 1471127	Bolt	4
25	a 1470942	Nut	4
25	b 1468174	Nut	4
26	a 1469857	Washer	4
26	b 1472158	Washer	4
27	1468223	Nut	8
28	1472216	Baffle	2
29	287816	Capscrew.....	30
30	1468159	Washer	30
31	1472217	Washer	30
32	1468262	Nut	32
33	1472218	Handle	4
34	a 1469000	Bolt	8
34	b 1519074	Bolt	8
35	1472220	Lock	2
36	a 292501	Capscrew.....	2
36	b 1519075	Bolt	2
37	1472222	Gas Spring.....	2
38	a 1469692	Bolt	4
38	b 1519076	Axle.....	4
39	1472224	Plate	2
	a 1468138	Bolt (Includes Item).....	6
40	b 1473132	Bolt	6
41	a 1472225	Bracket.....	1

HOOD AND FENDERS

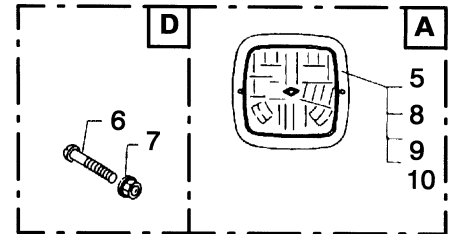
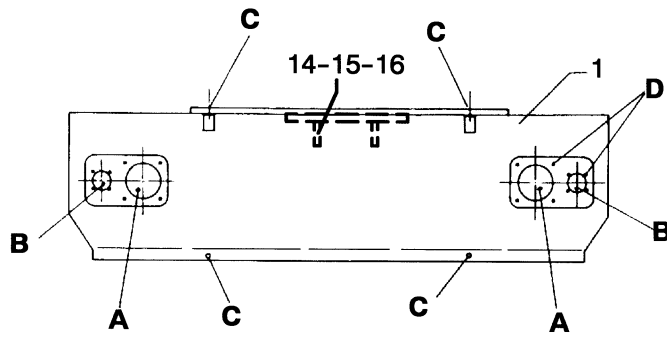
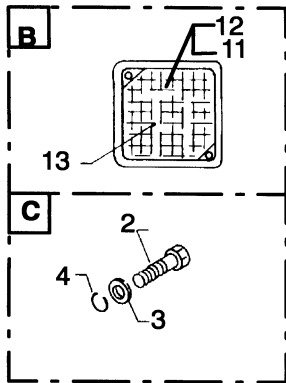
ITEM	PART NO.	DESCRIPTION	QTY
41	b 1519077	Cross Bar.....	1
42	1472226	Bracket.....	1
43	292545	Capscrew.....	8
44	1468952	Washer	16
45	1468941	Nut	8
46	b 1471900	Cotter Pin.....	8
47	b 1472285	Nut	8

FOOTNOTES:

a S/N A228-01501 ⇔ S/N A228-01509

b S/N A228-01510 ⇒

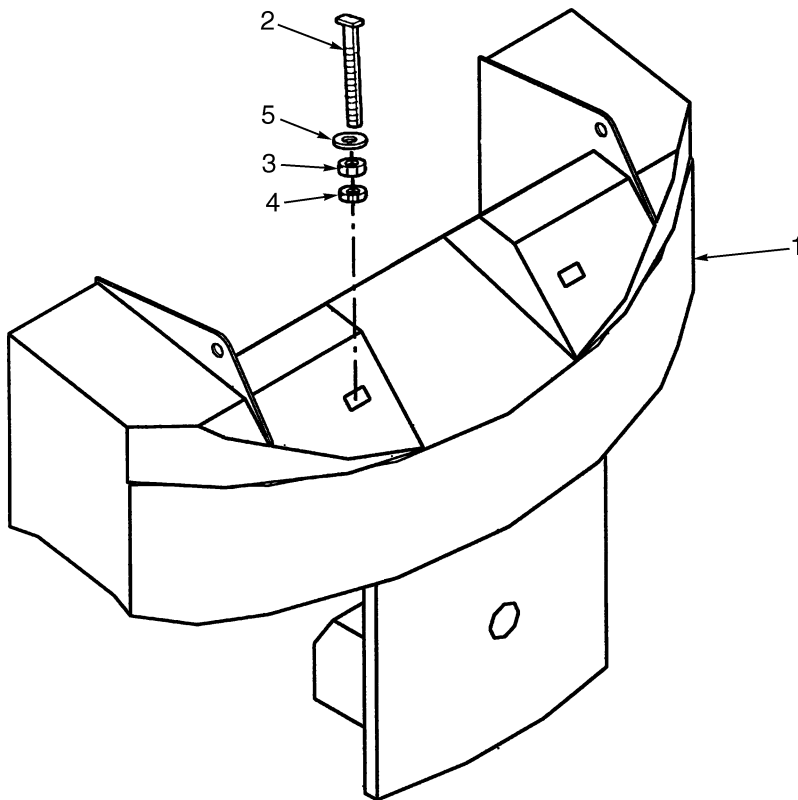
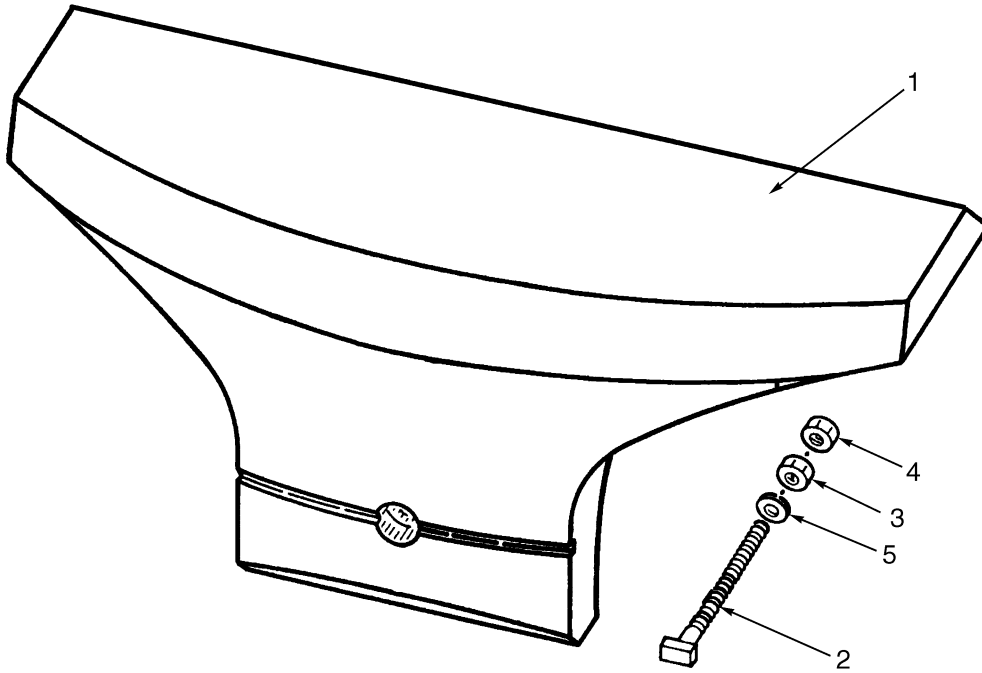
COWLING (Figure 1-3)



HP120023

ITEM	PART NO.	DESCRIPTION	QTY
1	1472231	Cowling	1
2	1472237	Bolt	4
3	1469857	Washer	4
4	1470358	Washer	4
5	1468911	Light.....	2
6	1468920	Bolt	12
7	1468921	Nut	12
8	1468912	Light.....	2
9	1468913	Lamp.....	2
10	1472258	Connector	2
11	1468915	Turn Signal.....	2
12	1472259	Light.....	2
13	1468916	Lamp.....	2
14	1472261	Fork.....	1
15	1469265	Bolt	4
16	1468223	Nut	4

COUNTERWEIGHT (Figure 1-4)



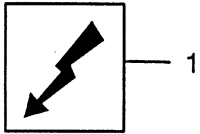
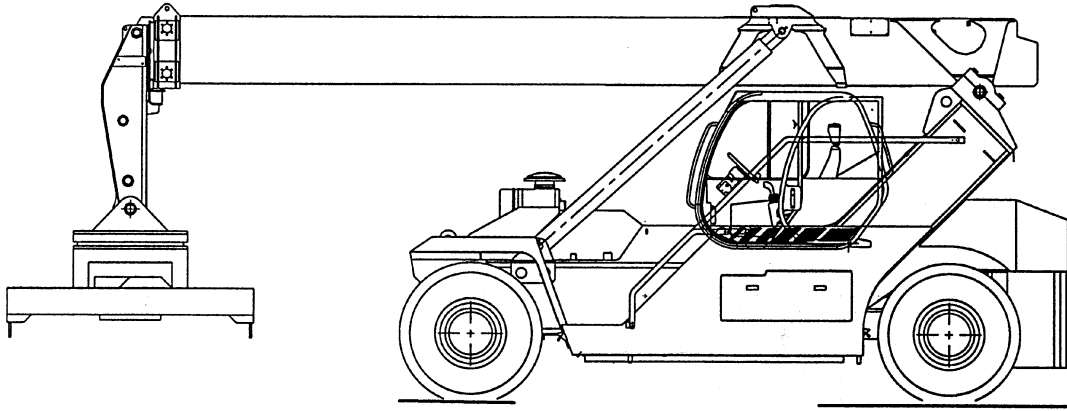
HP120024

COUNTERWEIGHT

ITEM	PART NO.	DESCRIPTION	QTY
1	a 1472271	Counterweight	1
1	b 1519084	Counterweight	1
2	1472270	Bolt	2
3	1468956	Nut	2
4	1468957	Nut	2
5	1468958	Washer	2

FOOTNOTES:**a** S/N A228-01501 ⇔ S/N A228-01509**b** S/N A228-01510 ⇒

WIRE HARNESS (Figure 1-5) (S/N A228-01510⇒)



HP120663

WIRE HARNESS
(S/N A228-01510⇒)

ITEM	PART NO.	DESCRIPTION	QTY
1	1519070	Wire Harness.....	1

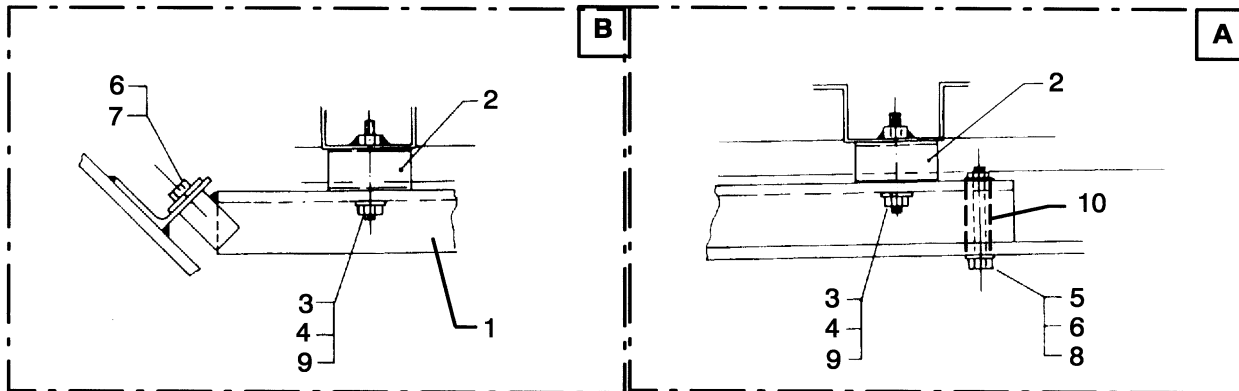
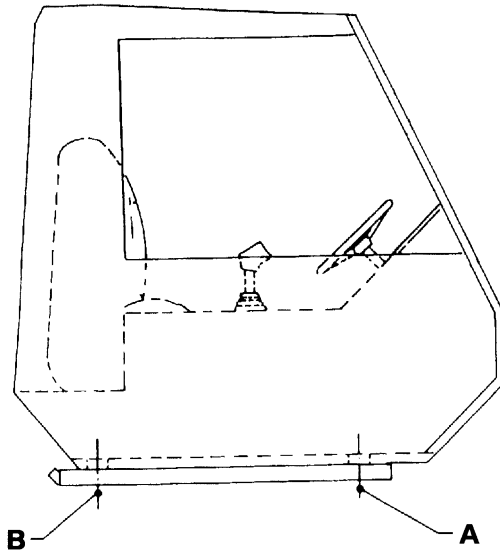
2

SINGLE FIXED CABIN

SECTION 2 SINGLE FIXED CABIN

DESCRIPTION	PAGE
CABIN	
S/N A228-01501↔S/N A228-01509	2-8
S/N A228-01510⇒	2-12
CABIN DOOR	
S/N A228-01501↔S/N A228-01509	2-22
S/N A228-01510⇒	2-24
CABIN SUPPORT	
S/N A228-01501↔S/N A228-01509	2-2
S/N A228-01510⇒	2-4
DASHBOARD FRAME	
S/N A228-01501↔S/N A228-01509	2-18
S/N A228-01510⇒	2-20
FLOOR PLATES	2-6
HEATER	
S/N A228-01501↔S/N A228-01509	2-42
JOYSTICK	
S/N A228-01501↔S/N A228-01509	2-35
S/N A228-01510⇒	2-36
JOYSTICK ATTACHING PARTS	
S/N A228-01501↔S/N A228-01509	2-34
LINER	
INTERIOR COVERS	
S/N A228-01510⇒	2-16
S/N A228-01501↔S/N A228-01509	2-15
PEDALS	
S/N A228-01501↔S/N A228-01509	2-38
S/N A228-01510⇒	2-40
SEAT	
S/N A228-01510⇒	2-32
SEAT ASSEMBLY	
S/N A228-01501↔S/N A228-01509	2-30
VENTILATION	
S/N A228-01510⇒	2-44
WINDOW	
REAR	
S/N A228-01501↔S/N A228-01509	2-26
S/N A228-01510⇒	2-28

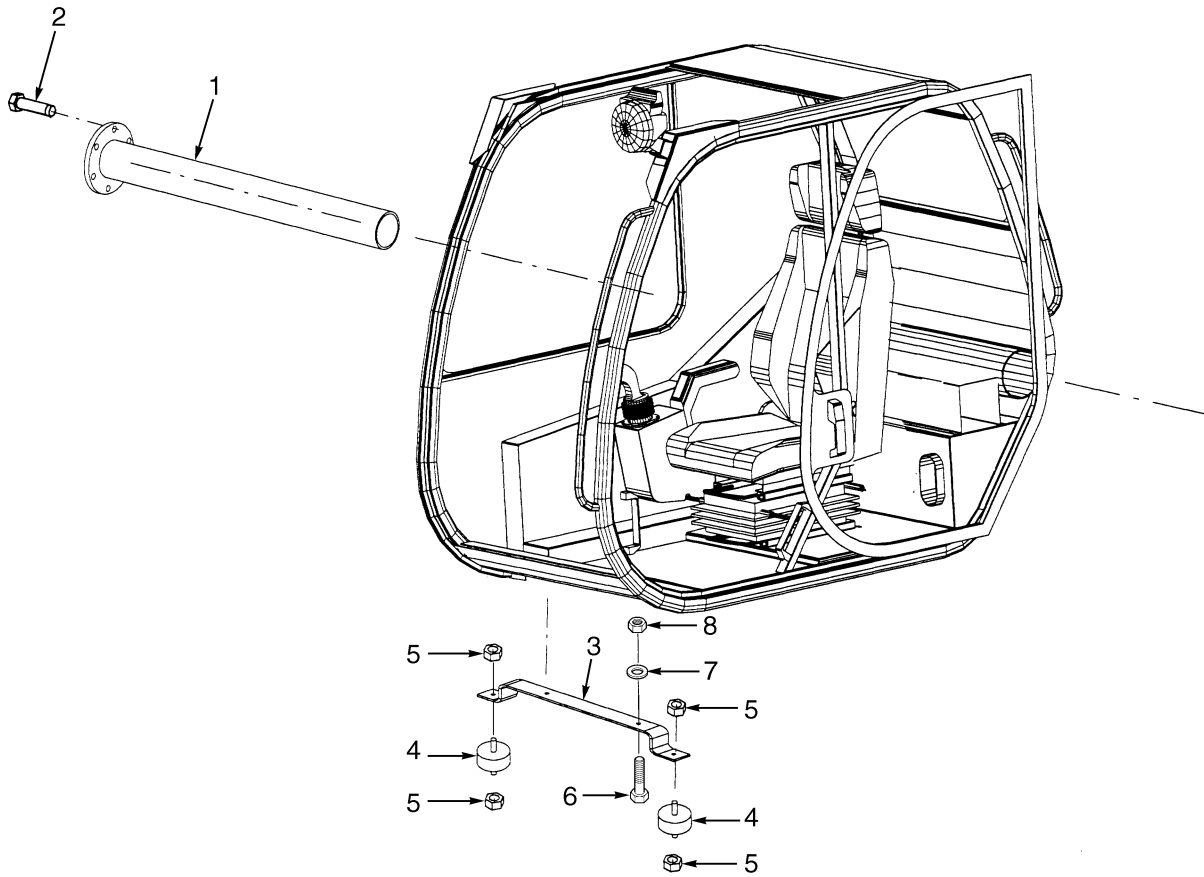
CABIN SUPPORT (Figure 2-1) (S/N A228-01501↔S/N A228-01509)



HP200000

ITEM	PART NO.	DESCRIPTION	QTY
1	1472290	Support.....	2
2	1472291	Support.....	4
3	1471101	Nut	4
4	1468952	Washer	4
5	1472292	Bolt	2
6	1472293	Washer	4
7	1468371	Nut	2
8	1470955	Nut	2
9	1471112	Washer	4
10	1472294	Tube.....	2

CABIN SUPPORT (Figure 2-2) (S/N A228-01510⇒)

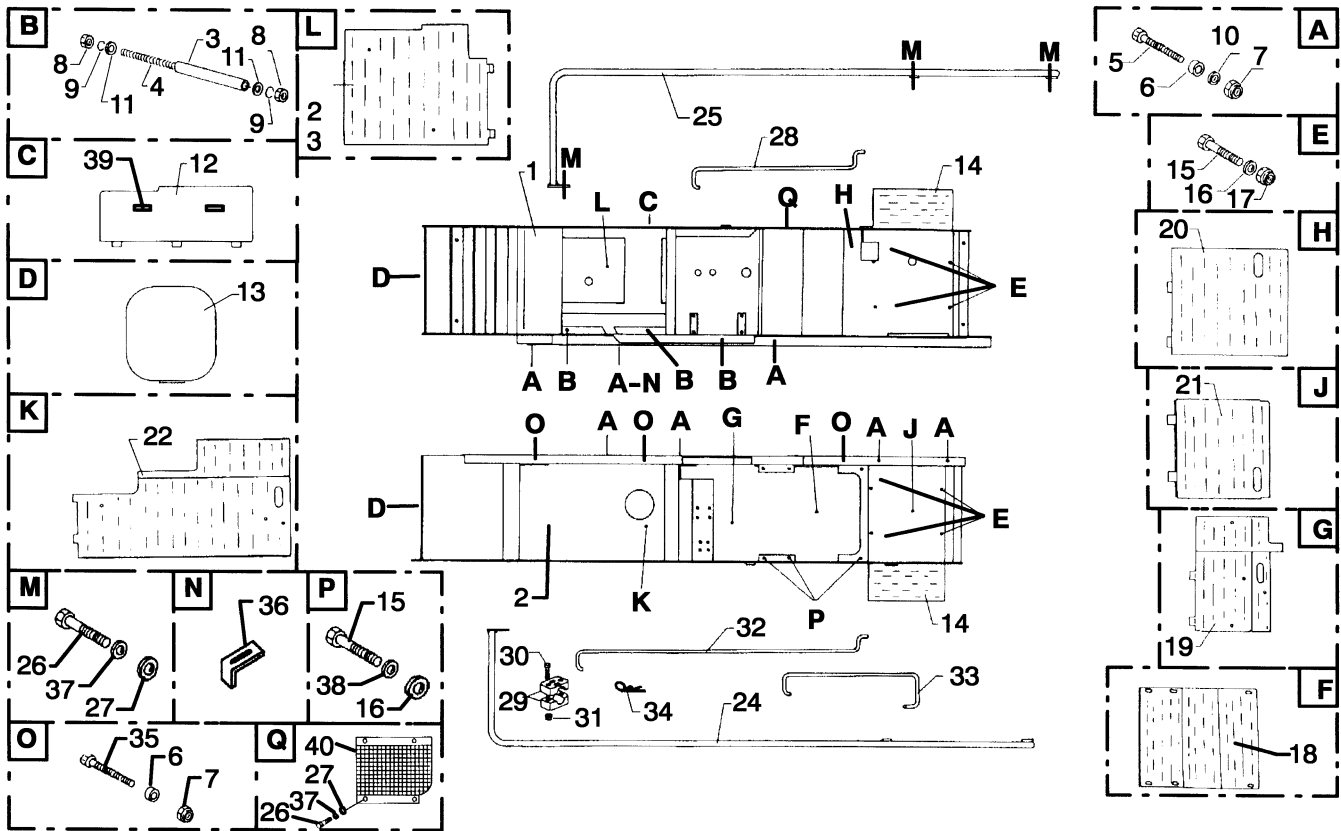


HP200076

CABIN SUPPORT
(S/N A228-01510⇒)

ITEM	PART NO.	DESCRIPTION	QTY
1	1519892	Support.....	1
2	1468212	Bolt	6
3	1519922	Support.....	1
4	1469803	Isolator.....	2
5	1470955	Nut	4
6	136985	Capscrew.....	2
7	1469074	Washer	2
8	1468893	Nut	2

FLOOR PLATES (Figure 2-3)



HP200001

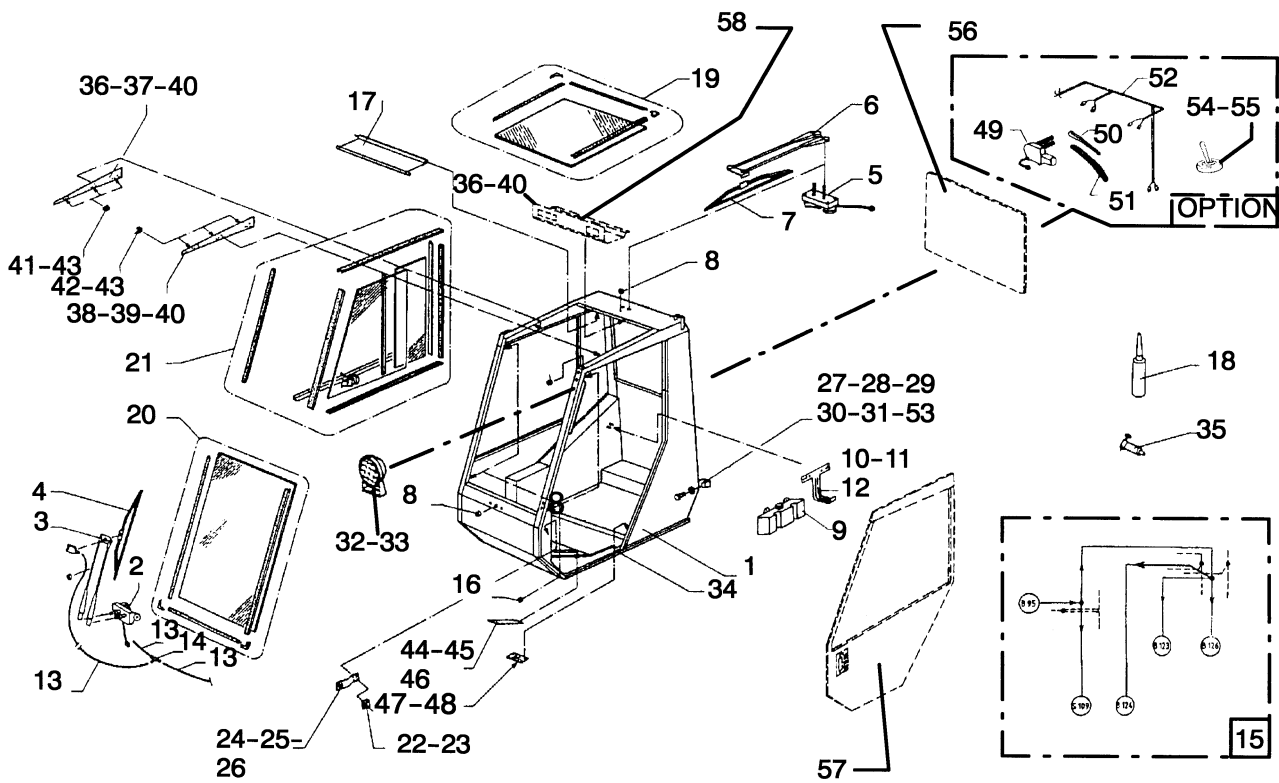
FLOOR PLATES

ITEM	PART NO.	DESCRIPTION	QTY
1	1472227	Box.....	1
2	1472228	Box.....	1
3	1472229	Spacer	3
4	1472230	Stud	3
5	1471897	Bolt	7
6	1472232	Washer	13
7	1468174	Nut	10
8	1471101	Nut	6
9	1471112	Washer	6
10	1468635	Washer	7
11	1472233	Washer	6
12	1472234	Door.....	1
13	1472235	Door.....	2
14	1472236	Step	2
15	1471127	Bolt	16
16	1472158	Washer	28
17	1468174	Nut	4
18	1472238	Step	1
19	1472239	Running Board.....	1
20	1472240	Running Board.....	1
21	1472242	Running Board.....	1
22	1472243	Plate	1
23	1472245	Plate	1
24	1472246	Plate	1
25	1472248	Plate	1
26	1468371	Nut	16
27	1469149	Washer	16
28	1472249	Plate	1
29	1468137	Bracket.....	3
30	1468130	Bolt	6
31	1468262	Nut	6
32	a 1472250	Plate	1
33	a 1472251	Plate	1
34	1472252	Cotter Pin.....	3
35	1472253	Bolt	3
36	1472254	Support.....	1
37	1468373	Washer	28
38	1470358	Washer	4
39	1472255	Plug	2
40	1472256	Grill	1

FOOTNOTES:

a S/N A228-01501⇔S/N A228-01509

CABIN (Figure 2-4) (S/N A228-01501↔S/N A228-01509)



HP200002

CABIN
(S/N A228-01501↔S/N A228-01509)

ITEM	PART NO.	DESCRIPTION	QTY
1	1472296	Cab	1
2	1472297	Motor	1
3	1472298	Wiper Arm.....	1
4	1472299	Wiper Blade	1
5	1472300	Wiper Motor	1
6	1472301	Wiper Arm.....	1
7	1472302	Wiper Blade	1
8	1472303	Guide	3
9	1472304	Windshield Washer.....	1
10	1472305	Support.....	1
11	1472306	Nut	1
12	1469218	Washer	2
13	1472308	Hose	1
14	1472309	Fitting.....	1
15	1472310	Wire Harness.....	1
16	1472311	Guide	3
17	1472312	Cover	1
18	1472313	Seal	1
19	1472314	Glass	1
20	1472315	Glass	1
21	1472316	Window.....	1
22	1472317	Catch	1
23	1472318	Bolt	4
24	1472319	Bracket.....	1
25	1472320	Bolt	2
26	1472321	Washer	2
27	1472322	Lock	1
28	1472323	Bolt	1
29	1469218	Washer	1
30	1472306	Nut	1
31	1472326	Cover	1
32	1468374	Light.....	1
33	1468375	Bulb	1
34	1472327	Seal	1
35	1472328	Seal	1
36	1472329	Bolt	18
37	1472330	Plate	1
38	1472331	Plate	1
39	1469274	Bolt	2
40	1469078	Washer	15
41	1472332	Support.....	3
42	1472333	Support.....	3
43	1472334	Bolt	12
44	1472335	Plate	1
45	1472386	Nut	4
46	1472337	Bolt	4
47	1472338	Plate	1
48	1472339	Rivet.....	4
49	1472340	Wiper Motor	1
50	1472341	Wiper Arm.....	1
51	1472342	Wiper Blade	1

CABIN (S/N A228-01501↔S/N A228-01509)

ITEM	PART NO.	DESCRIPTION	QTY
52	1472343	Wire Harness	1
53	1472344	Spacer	1
54	1472345	Switch	1
55	1472346	Plate	1
56	Glass (Rear) (☞ Figure 2-12)	1
57	Cabin Door (☞ Figure 2-10)	1
58	Wiring Roof Plate (☞ Figure 4-5)	1

Thank you so much for reading.
Please click the “Buy Now!”
button below to download the
complete manual.



After you pay.

You can download the most
perfect and complete manual in
the world immediately.

Our support email:

ebooklibonline@outlook.com