

PARTS MANUAL

SPACESAVER

**S135-S155XL2 [S6.00-7.00XL]
(B024)**

CUSTOMER EDITION

HYSTER

SECTIONS

1	FRAME
2	ENGINE(S)
3	FUEL SYSTEM
4	ELECTRICAL SYSTEM
5	TRANSMISSION
6	STEERING SYSTEM
7	BRAKE SYSTEM
8	HYDRAULIC SYSTEM
9	MAST-TWO STAGE LIMITED FREE-LIFT
10	MAST-THREE STAGE FULL FREE-LIFT
11	OPTIONS
12	NUMERICAL INDEX

TABLE OF CONTENTS

DESCRIPTION	PAGE
A	
AIR FILTER	
⇒S/N B024D-2267 EXC. 2263	3-62
S/N B024D-2268⇒ INC. 2263	3-64
ALTERNATOR	
DELCO BRAND	
⇒S/N B024D-4752.....	4-66
GASOLINE, LPG AND DIESEL	
S/N B024D-4753⇒.....	4-70
PRESTOLITE BRAND	4-72
ALTERNATOR MOUNTING	
DIESEL 1004.42	
WITH LOW EMISSIONS	4-76
B	
BACK-UP ALARM	11-18
BATTERY DISCONNECT	
S/N B024D-4072⇒	4-48
BRAKE	
ASBESTOS	
⇒S/N B024D-2083.....	7-8
NON-ASBESTOS	
S/N B024D-2084⇒.....	7-10
BRAKE BOOSTER.....	7-14
BRAKE LINES.....	7-16
C	
CAMSHAFT AND OIL PAN	
GASOLINE AND LPG	
2000 SERIES ENGINE	2-112
4LM 1994 SERIES ENGINE	2-104
5LM 1995 SERIES ENGINE	2-106
CAMSHAFT AND OIL SUMP	
GASOLINE AND LPG.....	2-108
CARBURETOR	
GASOLINE	
⇒S/N B024D-2267.....	3-40
LPG.....	3-34
S/N B024D-4059⇒ INC. 4039 EXC. 4084	3-36
CARRIAGE	
THREE STAGE FULL FREE-LIFT	10-22
TWO STAGE LIMITED FREE-LIFT.....	9-12
CLUTCH PACK	
POWERSHIFT	
DIRECTIONAL	
S/N B024D-07376Y⇒.....	5-34
INPUT	
S/N B024D-07376Y⇒.....	5-32
CLUTCH PACKS	
POWERSHIFT	
⇒S/N B024D-07375Y EXC. 7317, 7340, 7349-7350, 7358-7359, 7361-7362, 7374	5-30

TABLE OF CONTENTS (Continued)

DESCRIPTION	PAGE
C (continued)	
CLUTCH PEDAL	
OIL CLUTCH.....	5-20
CONTROL LINKAGE	
OIL CLUTCH.....	5-14
POWERSHIFT	5-44
CONTROL VALVE	
AUXILIARY	
FIFTH FUNCTION.....	8-70
FOUR AND FIVE FUNCTION	
⇒S/N B024D-6444.....	8-54
S/N B024D-6445⇒.....	8-58
POWERSHIFT	5-36
THREE FUNCTION	
⇒S/N B024D-6444.....	8-50
TWO AND THREE FUNCTION	
S/N B024D-6445⇒.....	8-56
TWO FUNCTION	
⇒S/N B024D-6444.....	8-46
CONTROL VALVE ATTACHING PARTS	
FOUR AND FIVE FUNCTION	
⇒S/N B024D-6444.....	8-52
THREE FUNCTION	
⇒S/N B024D-6444.....	8-48
TWO FUNCTION	
⇒S/N B024D-6444.....	8-44
CONTROL VALVE ATTACHING PARTS WITH FITTINGS	
FOUR AND FIVE FUNCTION	
S/N B024D-6445⇒.....	8-66
TWO AND THREE FUNCTION	
S/N B024D-6445⇒.....	8-60
CONTROL VALVE ATTACHING TUBES	
FOUR AND FIVE FUNCTION	
S/N B024D-6445⇒.....	8-68
TWO AND THREE FUNCTION	
S/N B024D-6445⇒.....	8-64
CONVERTER	
LPG	
⇒S/N B024D-2908.....	3-46
S/N B024D-2909↔S/N B24D-5105	3-48
S/N B024D-5106⇒.....	3-50
COOLANT PUMP	
DIESEL	
WITH LOW EMISSIONS	
S/N B024D-5288⇒ ⇒S/N U892125D	2-142
S/N U892126D⇒.....	2-144
WITHOUT LOW EMISSIONS	
⇒S/N B024D-5288	2-140
COOLING	
DIESEL	
WITH LOW EMISSIONS	

TABLE OF CONTENTS (Continued)

DESCRIPTION	PAGE
C (continued)	
S/N B024D-5288⇒	2-12
GASOLINE AND LPG	
S/N B024D-3207⇒.....	2-8
⇒S/N B024D3206	2-4
COUNTERWEIGHT	1-8
COWL AND FLOOR PLATES	1-10
CRANKSHAFT AND CAMSHAFT	
GASOLINE AND LPG	
2KM 1992 SERIES ENGINE	
S/N B024D-2263⇒ (LPG), S/N B024D-2268⇒ (GASOLINE).....	2-96
3KM 1993 SERIES ENGINE	2-100
⇒S/N B024D-2262 (LPG), ⇒S/N B024D-2267 (GASOLINE)	2-92
CRANKSHAFT AND PISTON	
DIESEL	
WITH LOW EMISSIONS	
S/N B024D-5288⇒	2-150
WITHOUT LOW EMISSIONS	
⇒S/N B024D-5288	2-120
CYLINDER BLOCK	
DIESEL	
WITH LOW EMISSIONS	
S/N B024D-5288⇒	2-146
WITHOUT LOW EMISSIONS	
⇒S/N B024D-5288	2-118
GASOLINE AND LPG	
1996 THRU 1999 SERIES ENGINE	2-48
2000 THRU 2003 SERIES ENGINE	2-52
2KM 1992 SERIES ENGINE	
S/N B024D-2263⇒ (LPG), S/N B024D-2268⇒ (GASOLINE).....	2-38
3KM 1993 SERIES ENGINE	2-42
4LM 1994 SERIES ENGINE	2-44
5LM 1995 SERIES ENGINE	2-46
⇒S/N B024D-2262 (LPG), ⇒S/N B024D-2267 (GASOLINE)	2-34
CYLINDER HEAD	
DIESEL	
WITH LOW EMISSIONS	
S/N B024D-5288⇒	2-148
WITHOUT LOW EMISSIONS	
⇒S/N B024D-5288	2-122
GASOLINE AND LPG.....	2-72
2000 SERIES ENGINE	2-74
2KM 1992 SERIES ENGINE	
S/N B024D-2263⇒ (LPG), S/N B024D-2268⇒ (GASOLINE).....	2-60
3KM 1993 SERIES ENGINE	2-64
4LM 1994 SERIES ENGINE	2-68
5LM 1995 SERIES ENGINE	2-70
⇒S/N B024D-2262 (LPG), ⇒S/N B024D-2267 (GASOLINE)	2-56

TABLE OF CONTENTS (Continued)

DESCRIPTION	PAGE
D	
DIFFERENTIAL	
OIL CLUTCH.....	5-10
DIFFERENTIAL AND CARRIER	
POWERSHIFT	5-40
DISTRIBUTOR	
2KM 1992, 3KM 1993, AND 5LM 1995 SERIES ENGINES	4-90
LM4 1994, LX6 1996, LX7 1997, LX8 1998, LX9 1999, AND 2000 SERIES ENGINES	4-92
⇒S/N B024D-2262 (LPG), ⇒S/N B024D-2267 (GASOLINE)	4-88
DRIVE AXLE	5-50
E	
ELECTRICAL	
DIESEL	4-44
GASOLINE	
S/N B024D-2268⇔S/N B024D-4058 INC. 4084 EXC. 4039	4-12
SHEET 1 OF 2	
S/N B024D-5563⇔S/N B024D-6153.....	4-24
S/N B024D-6154⇒	4-32
SHEET 2 OF 2	
S/N B024D-5563⇔S/N B024D-6153.....	4-28
S/N B024D-6154⇒	4-34
GASOLINE AND LPG	
⇒S/N B024D-2262 (LPG), ⇒S/N B024D-2267 (GASOLINE)	4-4
S/N B024D-2263⇒ (LPG), S/N B024D-2268⇔S/N B024D-4058 INC. 4084 EXC. 4039 (GASOLINE).....	4-8
S/N B024D-4059⇔S/N B024D-5562 INC. 4039 EXC. 4084	4-16
LPG	
S/N B024D-2263⇔S/N B024D-4058 INC. 4084 EXC. 4039	4-20
S/N B024D-4059⇔S/N B024D-5562 INC. 4039 EXC. 4084	4-22
SHEET 1 OF 2	
S/N B024B-5563⇒	4-38
SHEET 2 OF 2	
S/N B024B-5563⇒	4-42
ENGINE MOUNT.....	2-26
EXHAUST	
COUNTERWEIGHT	2-18
OVERHEAD	2-22
F	
FIRE EXTINGUISHER	11-16
FLYWHEEL HOUSING.....	2-30
FORK.....	1-38
FREE-LIFT	
THREE STAGE FULL FREE-LIFT	10-12
FREE-LIFT CYLINDER	
THREE STAGE FULL FREE-LIFT	10-20
FUEL INJECTION	
HIGH PRESSURE	
DIESEL WITHOUT LOW EMISSIONS	
⇒S/N B024D-5287	3-68
LOW PRESSURE	
DIESEL WITH LOW EMISSIONS	

TABLE OF CONTENTS (Continued)

DESCRIPTION	PAGE
F (continued)	
S/N B024D-5288⇒	3-78
FUEL INJECTION AND PUMP	
HIGH PRESSURE	
DIESEL WITH LOW EMISSIONS	
S/N B024D-5288⇒	3-72
FUEL LINES	
LOW PRESSURE	
DIESEL WITHOUT LOW EMISSIONS	
⇒S/N B024D-5287	3-74
FUEL SYSTEM	
GASOLINE	
⇒S/N B024D-2267	3-16
S/N B024D-2268⇒	3-20
LPG	
⇒S/N B024D-2262	3-4
S/N B024D-2263↔S/N B024D-4058 INC. 4084 EXC. 4039	3-8
S/N B024D-4059⇒ INC. 4039 EXC. 4084	3-12
FUEL TANK	
LPG	3-24
⇒S/N B024D-2267	3-28
S/N B024D-2268⇒	3-30
FUEL TANK BRACKET	
LPG EUROPE	3-26
FULL SUSPENSION SEAT	
EUROPEAN OPTION	
SHEET 1 OF 2	1-30
SHEET 2 OF 2	1-32
SHEET 1 OF 2	
S/N B024D-07019Y⇒	1-22
SHEET 2 OF 2	
S/N B024D-07019Y⇒	1-26
G	
GAUGE CLUSTER	
⇒S/N B024D02456N	4-62
S/N B024D02457N⇒	4-64
GOVERNOR	3-38
H	
HEADER HOSE	
THREE STAGE FULL FREE-LIFT	11-6
TWO STAGE LIMITED FREE-LIFT	11-2
HOOD	1-6
HYDRAULIC FILTER	8-32
HYDRAULIC LINES	
⇒S/N B024D-2456	8-4
S/N B024D-2457↔S/N B24D-6215	8-8
HYDRAULIC PUMP	8-20
ATTACHING PARTS	8-18

TABLE OF CONTENTS (Continued)

DESCRIPTION	PAGE
H (continued)	
HYDRAULIC SYSTEM	
S/N B024D-6215⇒	8-12
STEERING HYDRAULIC	
S/N B024D-6215⇒	8-14
HYDRAULIC TANK	
⇒S/N B024D-6215	8-30
I	
INNER MAST	
THREE STAGE FULL FREE-LIFT	10-6
TWO STAGE LIMITED FREE-LIFT	9-4
INSTRUMENT PANEL	
⇒S/N B024D-1751 INC. 1866	4-50
S/N B024D-2263⇒ (LPG), S/N B024D-2268⇒ (GASOLINE)	4-58
⇒S/N B024D-2267 EXC. 1866 (GASOLINE), S/N B024D-1752↔S/N B024D-2262 EXC. 1866 (LPG)	4-54
INTERMEDIATE MAST	
THREE STAGE FULL FREE-LIFT	10-4
L	
LABELS	1-3
LIFT	
TWO STAGE LIMITED FREE-LIFT	9-6
LIFT CYLINDER	
TWO STAGE LIMITED FREE-LIFT	9-10
LIFT PUMP	
DIESEL	
WITH LOW EMISSIONS	
S/N B024D-5288⇒	3-61
WITHOUT LOW EMISSIONS	
⇒S/N B024D-5287	3-60
LIGHTS	11-9
LOAD BACKREST EXTENSION	1-36
LOCK-OFF FILTER	
LPG	3-45
M	
MAIN LIFT	
THREE STAGE FULL FREE-LIFT	10-8
MAIN LIFT CYLINDER	
THREE STAGE FULL FREE-LIFT	10-16
MANIFOLD	
DIESEL	
WITH LOW EMISSIONS	
S/N B024D-5288⇒	2-138
WITHOUT LOW EMISSIONS	
⇒S/N B024D-5288	2-136
MONOTROL PEDAL	3-66

TABLE OF CONTENTS (Continued)

DESCRIPTION	PAGE
O	
OIL CLUTCH	5-16
OIL FILTER	
DIESEL	
WITH LOW EMISSIONS	
S/N B024D-5288⇒	2-134
WITHOUT LOW EMISSIONS	
⇒S/N B024D-5288	2-133
OIL PAN	
DIESEL	
WITHOUT LOW EMISSIONS	
⇒S/N B024D-5288	2-126
OIL PAN AND PUMP	
DIESEL	
WITH LOW EMISSIONS	
S/N B024D-5288⇒	2-154
OIL PUMP	
GASOLINE AND LPG	
4LM 1994, 5LM 1995, 6LX 1996-2001 SERIES ENGINE	2-116
LAST USED ON 3KM 1993 SERIES ENGINE	2-115
OUTER MAST	
THREE STAGE FULL FREE-LIFT	10-2
TWO STAGE LIMITED FREE-LIFT	9-2
OVERHEAD GUARD	1-34
P	
PARK BRAKE	7-12
PEDAL LINKAGE	
OIL CLUTCH	7-6
POWERSHIFT	7-2
PUMP ADAPTER	
DIESEL	8-28
S	
SEAT	
STANDARD WITH OPERATOR RESTRAINT	
GASOLINE AND DIESEL	1-18
LPG	1-14
SUSPENSION WITH OPERATOR RESTRAINT	
GASOLINE AND DIESEL	
⇒S/N B024D-07018Y	1-20
LPG	
⇒S/N B024D-07018Y	1-16
SEAT MOUNTING	
FULL SUSPENSION	
S/N B024D-07019Y⇒	1-28
SERPENTINE BELT DRIVE	
GASOLINE AND LPG	
S/N B024D-4059⇒ INC. 4039 EXC. 4084	2-14
STARTER	
DIESEL	4-84
OPTIONAL	4-86

TABLE OF CONTENTS (Continued)

DESCRIPTION	PAGE
S (continued)	
GASOLINE AND LPG	
S/N B024D-4059⇒ INC. 4039 EXC. 4084	4-82
⇒S/N B024D03002S	4-78
S/N D024D4058⇔S/N D024D3002S INC. 4084 EXC. 4039	4-80
STEERING AXLE	6-12
STEERING COLUMN	
⇒S/N B024D-1897	6-2
S/N B024D-1898⇔S/N B024D-2456	6-4
S/N B024D-2457⇒	6-6
STEERING CONTROL UNIT	6-10
STEERING CYLINDER	6-16
STEERING PUMP	
S/N B024D-6215⇒	8-26
⇒S/N B024D-6215	8-22
STROBE LIGHT	
HIGH INTENSITY	11-14
MEDIUM INTENSITY	11-12
T	
THROTTLE BODY INJECTOR	
S/N B024D-2268⇒ (GASOLINE)	3-42
THROTTLE LINKAGE	3-52
THROTTLE PEDAL	
OIL CLUTCH AND POWERSHIFT WITH FORWARD/REVERSE LEVER	3-56
POWERSHIFT WITH MONOTROL PEDAL	3-58
TILT CYLINDER	8-34
TIMING GEAR	
DIESEL	
WITH LOW EMISSIONS	
S/N B024D-5288⇒	2-152
WITHOUT LOW EMISSIONS	
⇒S/N B024D-5288	2-124
TORQUE CONVERTER	
POWERSHIFT	5-47
TRANSMISSION	
OIL CLUTCH	5-2
POWERSHIFT	5-22
TRANSMISSION GEARS	
OIL CLUTCH	5-6
POWERSHIFT	
⇒S/N B024D-07375Y EXC. 7317, 7340, 7349-7350, 7358-7359, 7361-7362, 7374	5-26
S/N B024D-07376Y⇒	5-28
TRANSMISSION HYDRAULIC	
OIL CLUTCH	8-36
POWERSHIFT	
⇒S/N B024D-5773	8-40
S/N B024D-5774⇒	8-42
TRANSMISSION PUMP	
OIL CLUTCH	8-38

TABLE OF CONTENTS (Continued)

DESCRIPTION	PAGE
U	
UNIVERSAL JOINT	
OIL CLUTCH.....	5-12
POWERSHIFT	5-48
V	
VALVE COVER	
DIESEL	
WITHOUT LOW EMISSIONS	
⇒S/N B024D-5288.....	2-130
VALVE COVER AND INLET MANIFOLD	
GASOLINE AND LPG.....	2-84
2000 SERIES ENGINE	2-88
4LM 1994 SERIES ENGINE	2-76
5LM 1995 SERIES ENGINE	2-80
VALVE COVER AND ROCKER ARM SHAFT	
DIESEL	
WITH LOW EMISSIONS	
S/N B024D-5288⇒.....	2-158
W	
WATER SEPARATOR AND FILTER	
DIESEL	3-81
WIRE HARNESS	
COWL	
DIESEL.....	4-98
GASOLINE AND LPG	
S/N B024D-2263⇒ (LPG), S/N B024D-2268⇒ (GASOLINE).....	4-96
DIESEL TIER II ENGINE	
S/N B024V-1575Y⇒	4-128
GASOLINE	
SHEET 1 OF 2	
S/N B024D-2268⇔S/N B024D-6153.....	4-112
SHEET 2 OF 2	
S/N B024D-2268⇔S/N B024D-6153.....	4-116
GASOLINE ENGINE	
SHEET 1 OF 2	
S/N B024D-6154⇔S/N B024V-1575Y	4-120
S/N B024V-1575Y⇒.....	4-124
SHEET 2 OF 2	
S/N B024D-6154⇔S/N B024V-1574Y	4-122
S/N B024V-1575Y⇒.....	4-126
GOVERNOR	
S/N B024D-2263⇔S/N B024D-2537 (LPG), S/N B024D-2268⇔S/N B024D-2537 (GASOLINE).....	4-94
S/N B024D-2538⇒.....	4-95
LPG ENGINE	
S/N B024D-06657⇔S/N B024D-01316	4-106
S/N B024D-07317⇒.....	4-108
S/N B024D-2263⇔S/N B024D-5048 INC. 4084 EXC. 4039.....	4-100
S/N B024D-4059⇔S/N B024D-05562W INC. 4039 EXC. 4084	4-104
S/N B024V-1575Y⇒	4-110
NEUTRAL START WITH FORWARD/REVERSE LEVER	

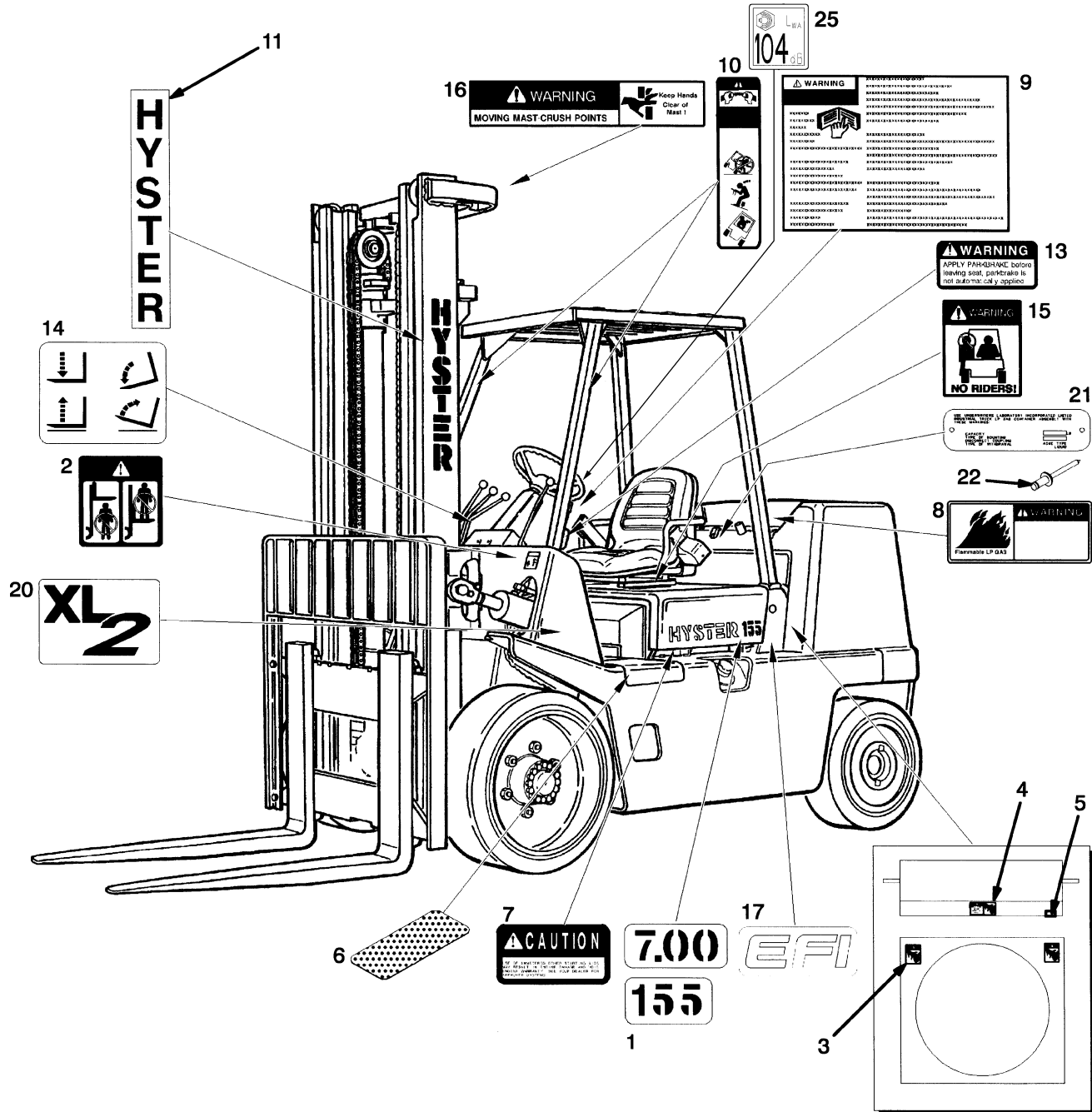
TABLE OF CONTENTS (Continued)

DESCRIPTION	PAGE
W (continued)	
S/N B024D-2263⇒ (LPG), S/N B024D-2268⇒ (GASOLINE)	4-131
NEUTRAL START WITH MONOTROL PEDAL	
S/N B024D-2263⇒ (LPG), S/N B024D-2268⇒ (GASOLINE)	4-130
OIL CLUTCH	
S/N B024D-2263⇒ (LPG), S/N B024D-2268⇒ (GASOLINE)	4-132

**SECTION 1
FRAME**

DESCRIPTION	PAGE
COUNTERWEIGHT	1-8
COWL AND FLOOR PLATES	1-10
FORK.....	1-38
FULL SUSPENSION SEAT	
EUROPEAN OPTION	
SHEET 1 OF 2	1-30
SHEET 2 OF 2	1-32
SHEET 1 OF 2	
S/N B024D-07019Y⇒	1-22
SHEET 2 OF 2	
S/N B024D-07019Y⇒	1-26
HOOD.....	1-6
LABELS.....	1-3
LOAD BACKREST EXTENSION.....	1-36
OVERHEAD GUARD.....	1-34
SEAT	
STANDARD WITH OPERATOR RESTRAINT	
GASOLINE AND DIESEL.....	1-18
LPG	1-14
SUSPENSION WITH OPERATOR RESTRAINT	
GASOLINE AND DIESEL	
⇒S/N B024D-07018Y	1-20
LPG	
⇒S/N B024D-07018Y	1-16
SEAT MOUNTING	
FULL SUSPENSION	
S/N B024D-07019Y⇒	1-28

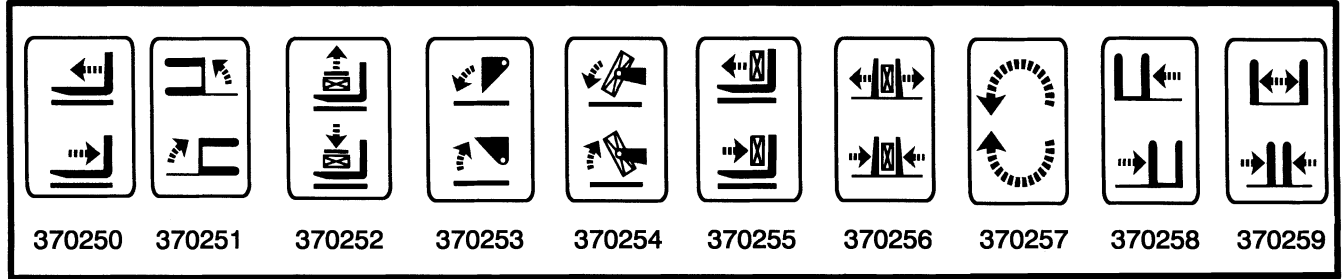
LABELS (Figure 1-1)



HP120048

LABELS

12



HP120049

ITEM	PART NO.	DESCRIPTION	QTY
1	380333	Label (Model 135).....	2
1	380334	Label (Model 155).....	2
1	380335	Label (Model 6.00).....	2
1	380336	Label (Model 7.00).....	2
2	1338178	Label (Mast Warning)	2
2	c 1339830	Label (Mast Warning)	2
3	c 1300094	Label (Fan Warning)	1
3	1345939	Label (Fan Warning)	2
4	1325271	Label (Fan Warning)	1
4	c 1345926	Label (Fan Warning)	1
5	1354165	Label (Anti-freeze)	1
6	1308608	Floormat	1
7	2034459	Label (Ether Warning).....	1
8	c 1316445	Label (Flammable LP Gasoline)	1
8	e 1320264	Label (Flammable LP Gasoline)	1
9	cg 1336592	Label (Operator Warning).....	1
9	ef 1336605	Label (Operator Warning).....	1
9	cf 1366725	Label (Operator Warning).....	1
10	ef 1330917	Label (Operator Restraint).....	2
10	cg 1335143	Label (Tip Over Warning)	2
10	cf 1359588	Label (Operator Restraint).....	2
11	1344132	Label (Hyster)	2
11	1345836	Label (Hyster) (Optional)	2
12	370250	Label (Auxiliary Function - Reach)	1
12	370251	Label (Auxiliary Function - Swing)	1
12	370252	Label (Auxiliary Function - Stabilizer)	1
12	370253	Label (Auxiliary Function - Dump/Scoop).....	1
12	370254	Label (Auxiliary Function - Upender)	1
12	370255	Label (Auxiliary Function - Push/Pull).....	1
12	370256	Label (Auxiliary Function - Clamp)	1
12	370257	Label (Auxiliary Function - Rotate)	1
12	370258	Label (Auxiliary Function - Side-Shift)	1
12	370259	Label (Auxiliary Function - Fork Spreader).....	1
13	1335146	Label (Park Brake Warning).....	1
13	c 1357001	Label (Park Brake Warning).....	1
14	369573	Label (Lift/Tilt).....	1
15	1330920	Label (No Riders)	2
15	c 1339828	Label (No Riders)	2

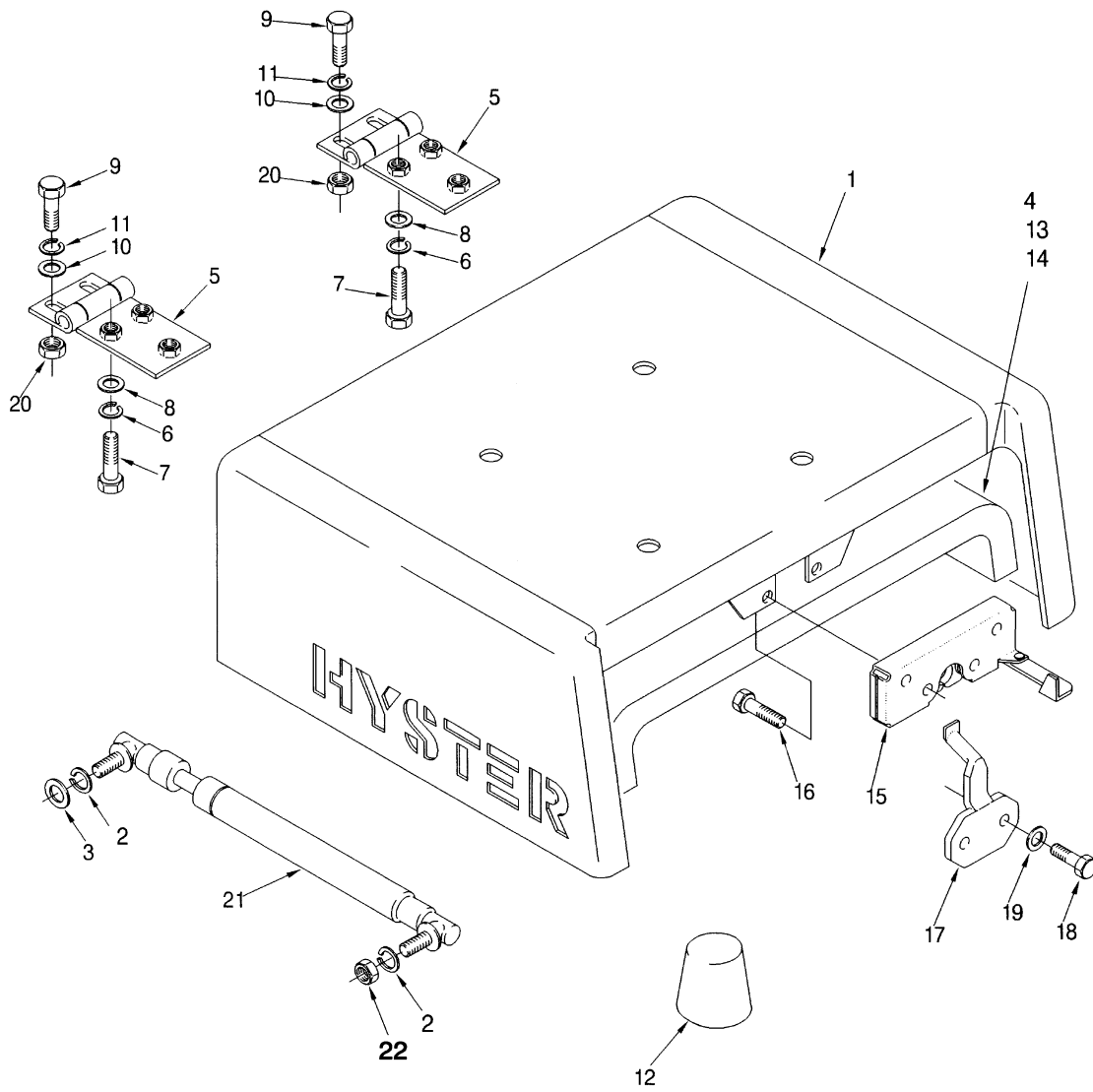
LABELS

ITEM	PART NO.	DESCRIPTION	QTY
16	1330919	Label (Mast Warning)	1
16	c 1343276	Label (Mast Warning)	1
17	h 1345998	Label (EFI)	2
18	389694	Cover (Nameplate)	1
19	170658	Rivet (Nameplate Cover)	4
20	1346853	Label (XL2)	2
21	1501259	Label (LPG Tank).....	1
22	170658	Rivet.....	2
22	340044	Gripnail (Optional)	2
23	i 1385099	Label (Hydraulic Oil Fill) (EEC).....	1
24	i 1385101	Label (Locking Hood Latch) (EEC)	1
25	acd 1503887	Label (Noise Level)	1
25	bcd 1503884	Label (Noise Level)	1
	996235	Label Kit (Includes Items 2-4, 6-10, 13-16)	1

FOOTNOTES:

- a** Diesel
- b** LP and Gasoline
- c** Non-U.S. (English)
- d** Not Illustrated
- e** U.S.
- f** With Operator Restraint
- g** Without Operator Restraint
- h** S/N B024D-2268 ⇒
- i** S/N B024D-4072 ⇒

HOOD (Figure 1-2)



HP120050

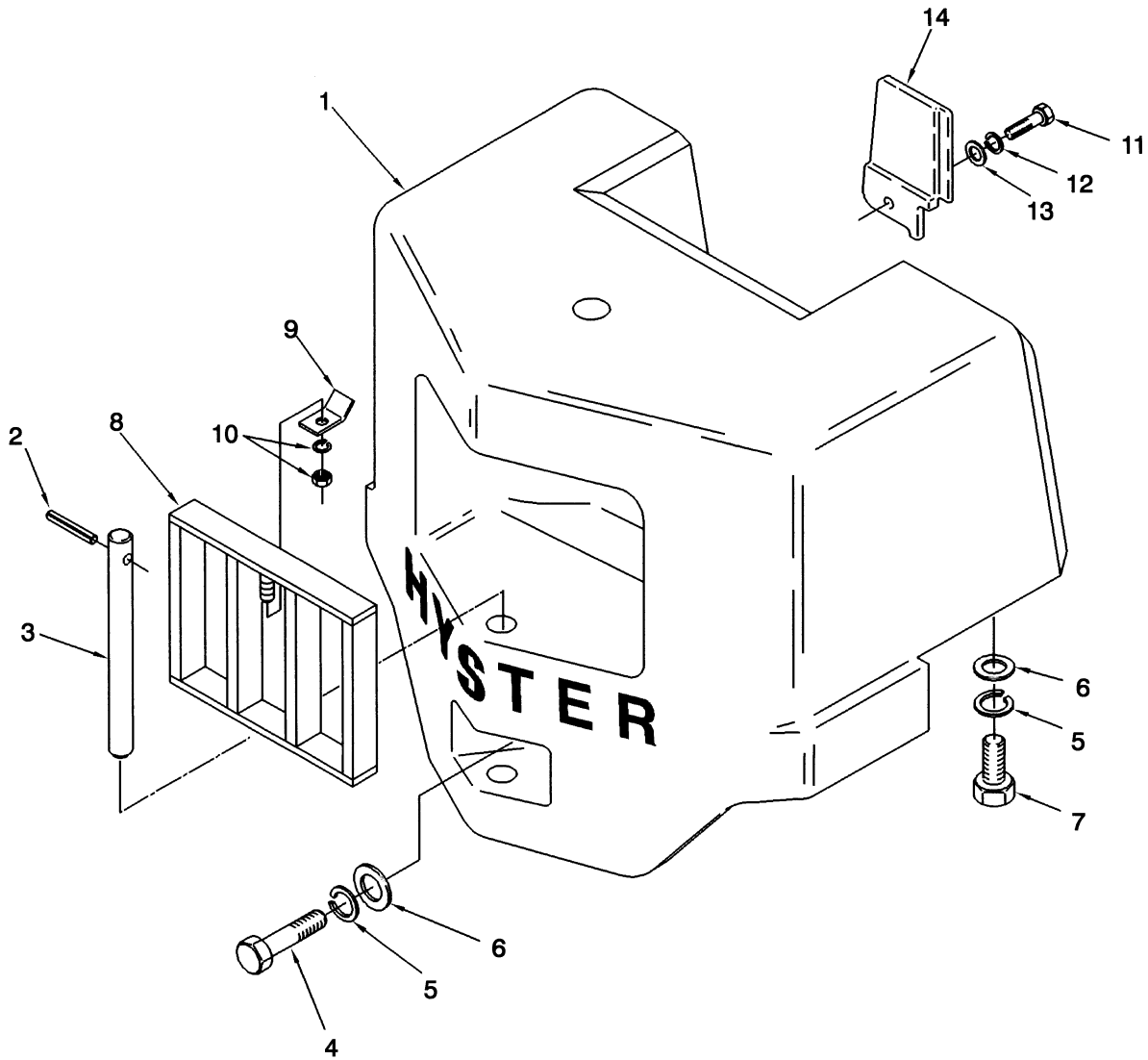
HOOD

ITEM	PART NO.	DESCRIPTION	QTY
1	a 1304973	Hood	1
1	b 1386222	Hood	1
2	292681	Lockwasher.....	2
3	320157	Washer	2
4	353191	Tape (54.9 m [180 ft.])	AR
5	1331039	Hinge	2
6	292681	Lockwasher.....	6
7	136681	Capscrew.....	6
8	1300117	Washer	6
9	c 136681	Capscrew.....	4
10	320157	Washer	4
11	c 292681	Lockwasher.....	4
12	1320610	Bumper	2
13	1456793	Hood Liner	1
14	1304971	Fastener.....	13
15	364857	Latch	1
16	199563	Capscrew.....	4
17	364861	Plate	1
18	302334	Capscrew.....	2
19	320160	Washer	2
20	239503	Nut	4
21	353021	Gas Spring.....	1
22	303117	Nut	1

FOOTNOTES:

- a ⇒ S/N B024D-4071
b S/N B024D-4072 ⇒
c ⇒ S/N PENDING PER ECN 63408

COUNTERWEIGHT (Figure 1-3)

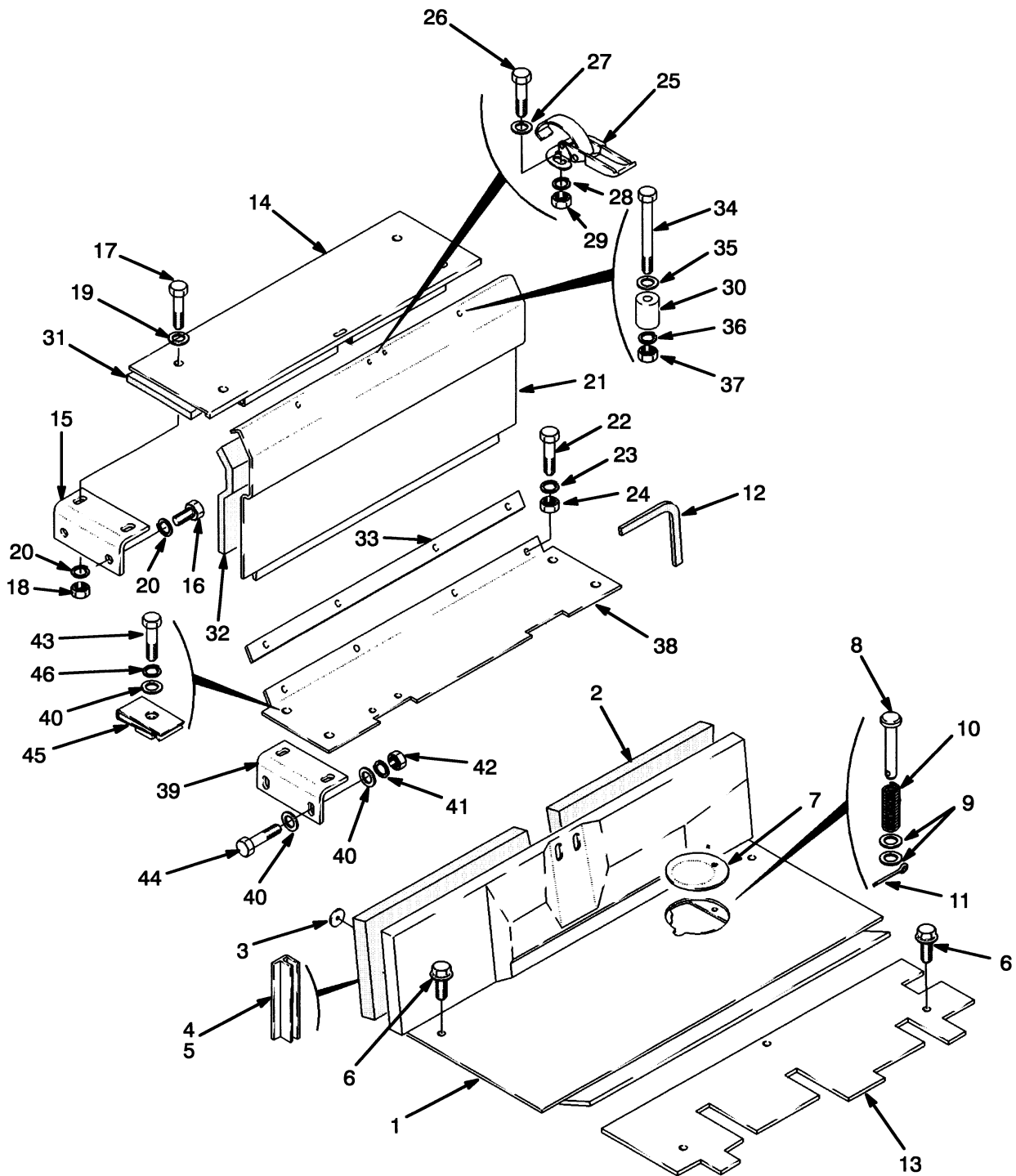


HP120051

COUNTERWEIGHT**KEY:****A: S135XL (S6.00XL)****B: S155XL (S7.00XL)**

ITEM	PART NO.	DESCRIPTION	QTY	
			A	B
1	360138	Counterweight	1	..
1	360139	Counterweight	1
2	302492	Pin	1	1
3	387473	Tow Pin	1	1
4	17395	Capscrew.....	1	1
5	15168	Lockwasher.....	3	3
6	149531	Washer	3	3
7	221100	Capscrew.....	2	2
8	1320109	Grill	1	1
9	270405	Bracket.....	1	1
10	264144	Nut	1	1
10	320182	Washer	1	1
11	287860	Capscrew.....	1	1
12	292682	Lockwasher.....	1	1
13	320160	Washer	1	1
14	385166	Cover	1	1

COWL AND FLOOR PLATES (Figure 1-4)



HP120052

COWL AND FLOOR PLATES

ITEM	PART NO.	DESCRIPTION	QTY
1	1303142	Floorplate.....	1
2	364926	Liner.....	1
3	246788	Washer	6
4	353204	Trim	AR
5	288394	Sealant	AR
6	1315402	Screw.....	5
7	313815	Plate	1
7	352939	Cover	1
8	177590	Rod End Pin	1
9	320157	Washer	2
10	137122	Spring	1
11	15212	Cotter Pin.....	1
12	288762	Tape.....	AR
13	bd 1303175	Floorplate.....	1
13	aef 1346730	Floorplate.....	1
13	bef 1346731	Floorplate.....	1
13	bc 1467733	Floorplate.....	1
13	ac 1467734	Floorplate.....	1
13	ad 388937	Floorplate.....	1
14	1303187	Cover	1
15	1308607	Bracket.....	2
16	292514	Capscrew.....	4
17	136985	Capscrew.....	4
18	136692	Nut	4
19	320160	Washer	AR
20	292682	Lockwasher.....	8
21	360174	Door	1
22	296161	Capscrew.....	4
23	292680	Lockwasher.....	4
24	136687	Nut	4
25	1303185	Latch	1
26	296152	Capscrew.....	2
27	320155	Washer	2
28	292679	Lockwasher.....	2
29	292668	Nut	2
30	1303149	Stop	2
31	1303189	Liner (Top)	1
32	1303190	Liner (Door)	1
33	1303184	Spacer	1
34	18126	Capscrew.....	2
35	15127	Washer	2
36	15154	Lockwasher.....	2
37	15054	Nut	2
38	360597	Plate	1
39	360596	Bracket.....	3
40	320160	Washer	12
41	292682	Lockwasher.....	4
42	136692	Nut	4
43	16805	Capscrew.....	4
44	292517	Capscrew.....	4

COWL AND FLOOR PLATES

ITEM	PART NO.	DESCRIPTION	QTY
45	269200	Nut	4
46	15156	Lockwasher.....	4

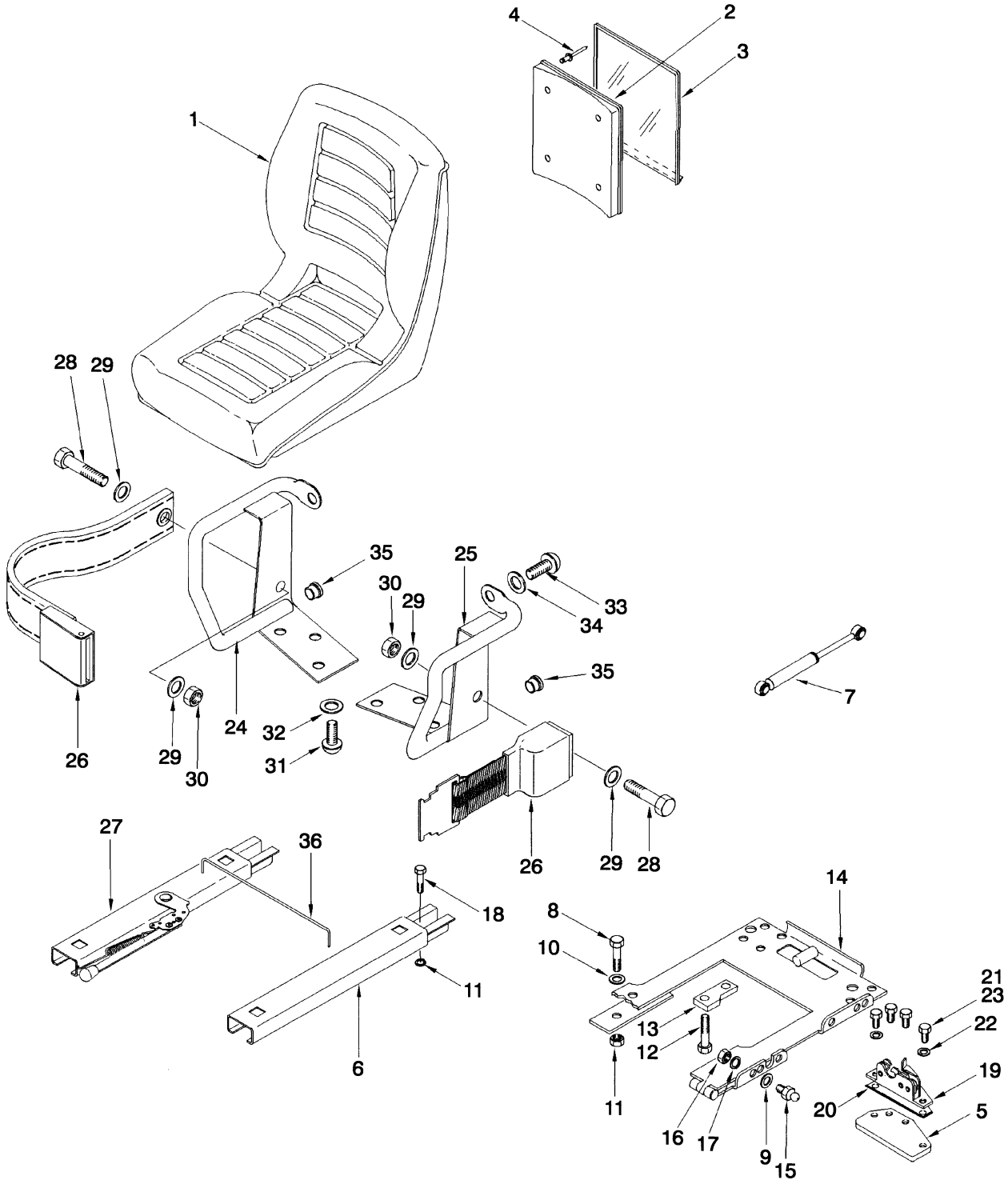
FOOTNOTES:

- a Oil Clutch
- b Powershift
- c S/N B024D-06444X ⇒
- d ⇒ S/N B024D-2456
- e S/N B024D-2457 ⇒
- f S/N B024D-2457 ⇔ S/N B024D-06443X

HYSTER

NOTES

SEAT (Figure 1-5) STANDARD WITH OPERATOR RESTRAINT LPG

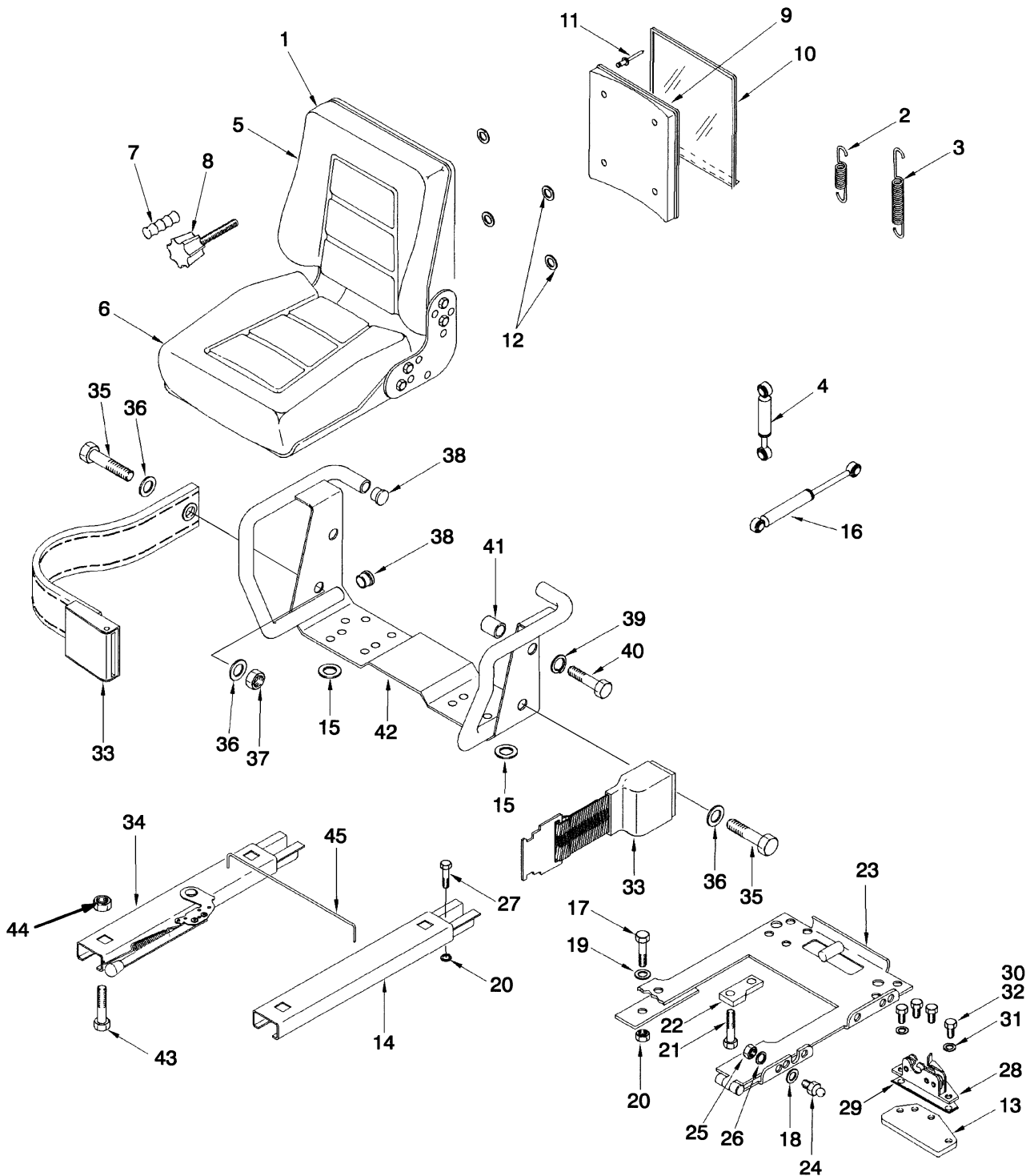


HP120429

**SEAT
STANDARD WITH OPERATOR RESTRAINT
LPG**

ITEM	PART NO.	DESCRIPTION	QTY
1	364911	Seat	1
2	335988	Base	1
3	335991	Cover (Information Case)	1
4	222029	Rivet.....	4
5	1346321	Plate	1
6	1300108	Seat Rail	1
7	1377992	Gas Spring.....	1
8	16374	Capscrew.....	4
9	320157	Washer	2
10	15175	Washer	4
11	145639	Nut.....	8
12	309637	Screw.....	4
13	306187	Bumper	2
14	1315420	Hinge	1
15	379190	Ball Stud	2
16	329069	Nut.....	2
17	292681	Lockwasher.....	2
18	16374	Capscrew.....	4
19	1304957	Latch.....	1
20	364940	Shim	3
21	221418	Capscrew.....	4
22	15127	Washer	2
23	251099	Adhesive.....	AR
24	364807	Hip Restraint (RH)	1
25	364808	Hip Restraint (LH).....	1
26	1374750	Seat Belt	1
27	383116	Seat Rail	1
28	379199	Capscrew.....	2
29	379697	Washer	4
30	379698	Nut.....	2
31	18727	Capscrew.....	4
32	18515	Washer	4
33	379197	Capscrew.....	2
34	379198	Washer	2
35	364854	Plug	2
36	1300107	Rod.....	1

SEAT (Figure 1-6) SUSPENSION WITH OPERATOR RESTRAINT LPG (⇒S/N B024D-07018Y)

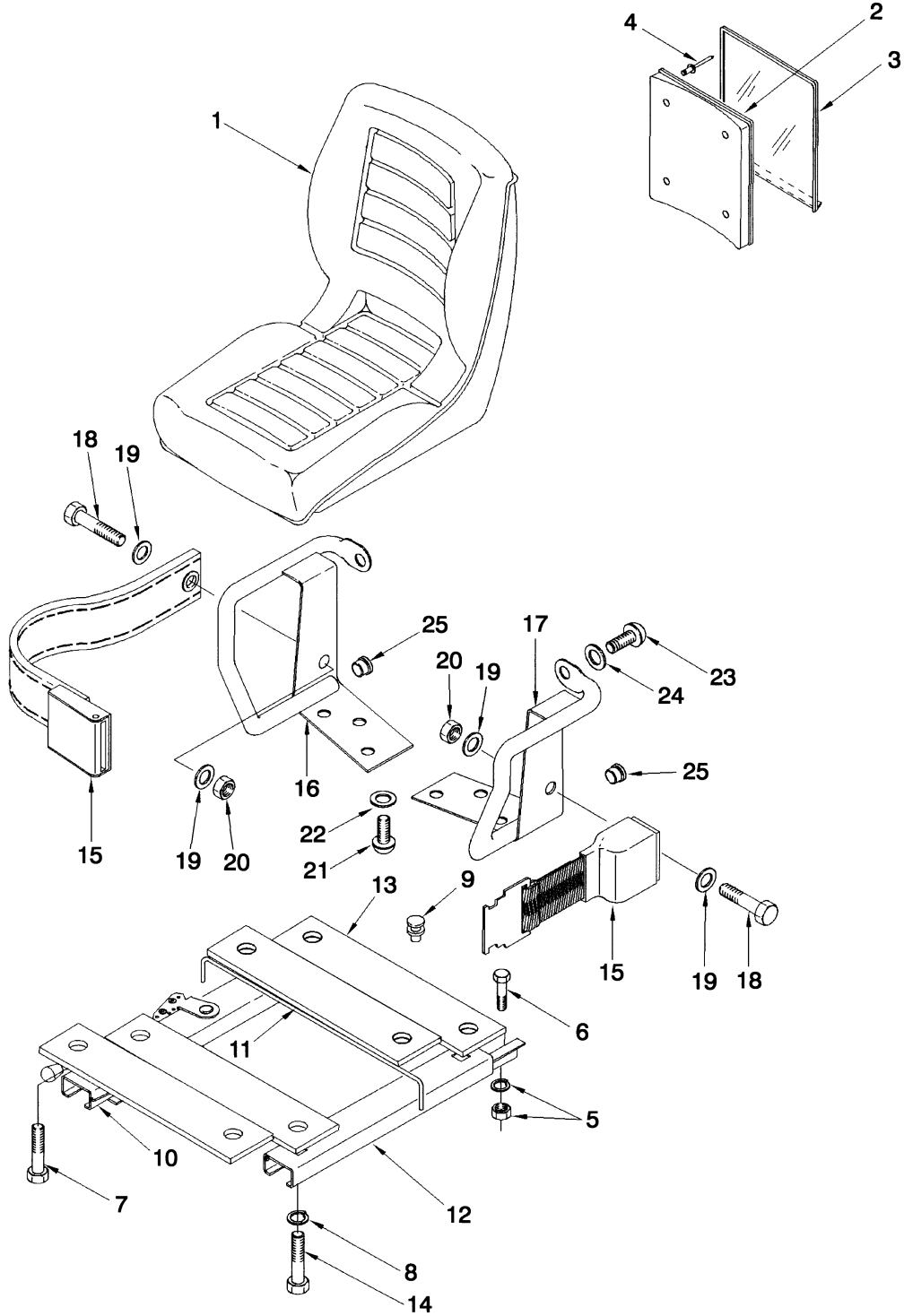


HP120053

SEAT
SUSPENSION WITH OPERATOR RESTRAINT
LPG
(⇒S/N B024D-07018Y)

ITEM	PART NO.	DESCRIPTION	QTY
1	1345826	Seat	1
2	326364	Spring	2
3	326363	Spring	1
4	326978	Shock Absorber	1
5	326361	Back Cushion (Vinyl) (Back)	1
6	326360	Seat Pan	1
7	326362	Knob	1
8	326365	Spindle (Adjuster)	1
9	335989	Tube (Information Case)	1
10	335991	Cover (Information Case)	1
11	222030	Rivet	4
12	1326337	Spacer	4
13	1346321	Plate	1
14	1300108	Seat Rail	1
15	1334790	Washer	4
16	380320	Gas Spring	1
17	16374	Capscrew	4
18	320157	Washer	4
19	15175	Washer	4
20	145639	Nut	4
21	309637	Screw	4
22	306187	Bumper	2
23	1315420	Hinge	1
24	379190	Ball Stud	2
25	329069	Nut	2
26	292681	Lockwasher	2
27	16374	Capscrew	4
28	1304957	Latch	1
29	364940	Shim	3
30	221418	Capscrew	4
31	15127	Washer	2
32	251099	Adhesive	AR
33	1374750	Seat Belt	1
34	383116	Seat Rail	1
35	379199	Capscrew	2
36	379697	Washer	4
37	379698	Nut	2
38	364854	Plug	4
39	379675	Washer	2
40	379674	Capscrew	2
41	364848	Spacer	2
42	364847	Restraint	1
43	18727	Capscrew	4
44	145639	Nut	4
45	1300107	Rod	1

SEAT (Figure 1-7) STANDARD WITH OPERATOR RESTRAINT GASOLINE AND DIESEL

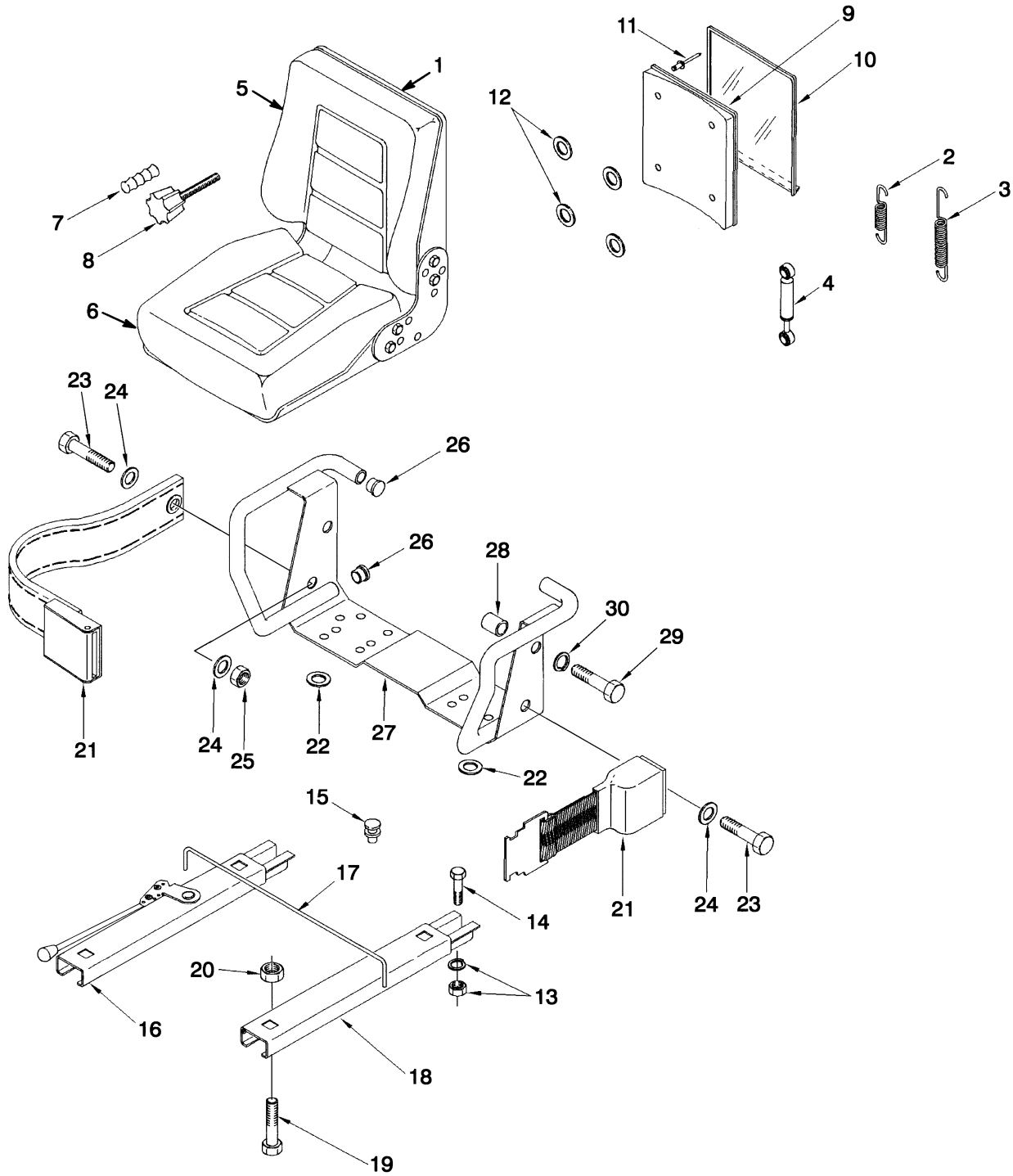


HP120054

**SEAT
STANDARD WITH OPERATOR RESTRAINT
GASOLINE AND DIESEL**

ITEM	PART NO.	DESCRIPTION	QTY
1	364911	Seat	1
2	335988	Base	1
3	335991	Cover (Information Case)	1
4	222029	Rivet.....	4
5	145639	Nut	4
5	15175	Washer	4
6	16374	Capscrew.....	4
7	178598	Capscrew.....	4
8	15155	Lockwasher.....	4
9	1307737	Fastener.....	4
10	1300108	Seat Rail	1
11	1300107	Rod	1
12	383116	Seat Rail	1
13	353731	Plate	2
14	186261	Capscrew.....	4
15	1374750	Seat Belt.....	1
16	364807	Hip Restraint (RH)	1
17	364808	Hip Restraint (LH).....	1
18	379199	Capscrew.....	2
19	379697	Washer	4
20	379698	Nut	2
21	18727	Capscrew.....	4
22	18515	Washer	4
23	379197	Capscrew.....	2
24	379198	Washer	2
25	364854	Plug	2

SEAT (Figure 1-8)
SUSPENSION WITH OPERATOR RESTRAINT
GASOLINE AND DIESEL
(⇒S/N B024D-07018Y)



Thank you so much for reading.
Please click the “Buy Now!”
button below to download the
complete manual.



After you pay.

You can download the most
perfect and complete manual in
the world immediately.

Our support email:

ebooklibonline@outlook.com