

PARTS MANUAL

**HR45-25, -27, -31, -36L, -40LS,
-40S, -45LSX, HR45H
(B227)**

CUSTOMER EDITION

HYSTER

SECTIONS

1	FRAME
2	DENIZET CABIN
3	ENGINE(S)
4	ELECTRICAL SYSTEM
5	TRANSMISSION
6	DRIVE AXLE
7	STEERING SYSTEM
8	BRAKE SYSTEM
9	HYDRAULIC SYSTEM
10	BOOM
11	L/LS/LSX BOOM
12	WINCH
13	CONTAINER HANDLER B665
14	CONTAINER HANDLER A672
15	STABILIZER
16	LOAD MOMENT LIMITER
17	OPTIONS
18	NUMERICAL INDEX

TABLE OF CONTENTS

DESCRIPTION	PAGE
A	
ACCUMULATOR	
HR45-25, HR45-31, HR45-40S	8-8
L/LS/LSX.....	8-10
AIR CONDITIONER	
SLIDING CAB	
PRESSURIZED	2-14
WIDE CAB	2-12
AIR FILTER.....	3-2
AMPLIFIER.....	9-72
ANTI TIPPING SWITCH.....	7-2
B	
BASE ELECTRO VALVE	9-69
BATTERY.....	4-32
BOOM	
4H 9"6"	
LSX.....	11-2
9 FT. 6 IN. JIB SECTION P1-P2-P3.....	10-2
BOOM CIRCUIT	
HR45-25, HR45-31, HR45-40S	9-24
L/LS/LSX.....	9-26
BOOM EXTEND AND RETRACT VALVE.....	9-56
BOOM HEAD.....	11-3
HR45-25, HR45-31, HR45-40S	10-4
BOOM HOIST VALVE	
SHEET 1 OF 2.....	9-50
SHEET 2 OF 2.....	9-52
BOOM PIVOT BEARING.....	11-4
HR45-25, HR45-31, HR45-40S	10-5
BRAKE	
DINAMIC GEAR.....	14-14
BRAKE CIRCUIT	
HR45-25, HR45-31, HR45-40S	8-2
L/LS/LSX.....	8-3
BRAKE CONTROL CIRCUIT	8-20
BRAKE OIL FILTRATION SYSTEM.....	9-19
BRAKE OIL RESERVOIR.....	8-12
BUMPERS	
B665.....	13-8
C	
CAB RAILS	
SLIDING CAB	
L/LS/LSX	1-20
CAB SUPPORT	
STANDARD AND R/RS.....	2-8
CABIN GLASS AND WIPERS	
WIDE CAB	2-10
CABIN PRESSURIZATION	
FIXED CABIN	2-30

TABLE OF CONTENTS (Continued)

DESCRIPTION	PAGE
C (continued)	
CABLE AND DECALS.....	12-21
CABLE GUIDE	12-8
CABLE SUPPORT	
BOOM 9 FT. 6 IN.	
HR45-25, HR45-31, HR45-40S.....	10-6
LSX.....	11-5
CABLE WINDER.....	16-3
CAMERA ASSEMBLY	17-34
CHARGE PUMP AND REGULATOR	5-20
CHARGE PUMP FLANGE	
HR45-25, HR45-31, HR45-40S	5-27
CHASSIS BOX	
L/LS/LSX.....	1-10
OPTIONAL COVERS AND HAND RAILS.....	1-8
STANDARD AND R/RS	
LEFT HAND	1-6
CIRCUIT BREAKERS	
WIDE FIXED CAB	
PRESSURIZED.....	2-28
CLUTCH	
FORWARD.....	5-10
FOURTH SPEED.....	5-18
LOW SPEED.....	5-16
REVERSE AND 2ND SHAFT	5-14
THIRD SPEED.....	5-12
COLD CLIMATE KIT.....	17-28
CONTROL BOX.....	14-41
CONTROL BOX MOUNTING	14-42
CONTROL CIRCUIT	12-2
CONTROL SWITCH.....	12-18
CONTROL VALVE AND ATTACHING PARTS	
L/LS/LSX.....	9-44
CONTROL VALVE ASSEMBLY	9-46
WINCH.....	12-16
CONTROL VALVE ATTACHING PARTS	
HR45-25, HR45-31, HR45-40S	9-42
CONTROL VALVE RELIEF SECTION	9-48
CONTROLLER	
APC 100.....	4-29
CONVERTER HOUSING ASSEMBLY	5-2
COOLING CIRCUIT DRIVE AXLE	
HR45-25, HR45-31, HR45-40S	6-12
L/LS/LSX.....	6-14
COUNTERWEIGHT	1-4
CYLINDER POWER PILE SLOPE	14-56

TABLE OF CONTENTS (Continued)

DESCRIPTION	PAGE
D	
DAMPENING	11-18
HR45-25, HR45-31, HR45-40S	10-12
DAMPENING VALVE	11-26
HR45-25, HR45-31, HR45-40S	10-24
DAMPING CYLINDER.....	11-19
HR45-25, HR45-31, HR45-40S	10-13
DERRICKING	11-16
HR45-25, HR45-31, HR45-40S	10-10
DERRICKING CYLINDER.....	11-20
HR45-25, HR45-31, HR45-40S	10-14
DERRICKING CYLINDER CONNECTIONS	
LSX	11-14
DIFFERENTIAL AND PARK BRAKE.....	6-2
DIRECTIONAL VALVE	
WITHOUT POWER PILE SLOPE.....	14-60
DISPLAY AND PRINTER	16-4
DOORS AND STORAGE COVERS	
WIDE CAB	2-6
DRIVE AXLE AND END DRIVE	6-6
DRIVE AXLE CONNECTIONS	6-8
DRIVE AXLE U-JOINT	6-9
L/LS/LSX.....	6-10
DRIVE TIRE AND WHEEL	
18 X 25 BRIDGESTONE	
HR45-36L, HR45-40LS	17-12
18 X 25 GOODYEAR	17-4
18 X 25 MICHELIN	
HR45-25, HR45-31, HR45-40S.....	17-6
18 X 25 PLAIN	17-10
18 X 33 BRIDGESTONE	17-5
18 X 33 GOODYEAR	
HR45-36L, HR45-40LS	17-8
18 X 33 MICHELIN	17-7
21 X 25 BRIDGESTONE	17-3
21 X 25 GOOD YEAR.....	17-2
E	
ELECTRIC CONTROL VALVE	
ELECTRONIC INCHING.....	5-22
ELECTRICAL	
HR45-25, HR45-31, HR45-40S	10-23
LSX	11-24
ELECTRICAL SYSTEM	
POWER PILE SLOPE.....	13-28
WITHOUT POWER PILE SLOPE.....	13-26
END BEAMS	14-26
ENGINE AND TRANSMISSION COOLING	3-22
ENGINE COMPONENTS.....	3-10
ENGINE COOLING SYSTEM	3-18
ENGINE INTAKE COOLING.....	3-20
ENGINE MOUNTING AND ACCESSORIES.....	3-6

TABLE OF CONTENTS (Continued)

DESCRIPTION	PAGE
E (continued)	
ENGINE WIRING AND FITTINGS	3-8
EXHAUST	3-4
EXTENSION CABLE SUPPORT	14-34
EXTENSION CYLINDER ASSEMBLY	13-22
F	
FAN PUMP	3-14
FILTER BRAKE RETURN	8-17
FILTER PUMP CIRCUIT L/LS/LSX.....	5-28
FILTER TRANSMISSION OIL HR45-25, HR45-31, HR45-40S	5-26
FITTINGS BOOM AND ATTACHMENT B665	13-9
FLANGE COUPLING DINAMIC GEAR.....	14-20
FLOOR PLATES AND COVERS	2-2
FRAME	1-2
L/LS/LSX.....	1-3
FUEL CIRCUIT AND FAN PUMP SUPPLY	3-12
FUEL HEATER	17-30
FUEL RESERVIOR	9-16
FUSE BOX.....	3-16
FUSES AND RELAYS SLIDING CAB PRESSURIZED.....	4-20
WIDE FIXED CAB STANDARD AND R/RS	4-18
G	
GENERAL RETURN CIRCUIT HR45-25, HR45-31, HR45-40S	9-30
L/LS/LSX.....	9-32
H	
HOOD.....	1-12
HYDRAULIC AND BRAKE COOLING.....	3-28
HYDRAULIC BYPASS FILTRATION SYSTEM	9-20
HYDRAULIC CIRCUIT CEC	16-2
MAIN	14-44
ROTATOR.....	14-46
SIDE-SHIFT	14-52
TWISTLOCKS.....	14-50
HYDRAULIC CIRCUIT STABILIZER HR45-40LS	15-10
HR45-40S	15-11
HYDRAULIC CONTROL CIRCUIT	

TABLE OF CONTENTS (Continued)

DESCRIPTION	PAGE
H (continued)	
HR45-40LS	15-2
HR45-40S	15-4
HYDRAULIC CONTROL VALVE	
HYDRAULIC INCHING	5-24
HYDRAULIC COOLING SYSTEM	9-6
BRAKE OIL	9-9
HYDRAULIC OIL	9-3
HYDRAULIC FILTERING CIRCUIT	3-34
HYDRAULIC LIFTING JACK	17-26
HYDRAULIC MOTOR SUPPORT	
SLIDING CAB	
L/LS/LSX	1-26
HYDRAULIC PENDULAR CYLINDER	
WITH POWER PILE SLOPE	13-39
HYDRAULIC RADIATOR	9-8
HYDRAULIC STOP KIT	
B665	
OPTIONAL	13-4
HYDRAULIC SUPPLY CIRCUIT	
HR45-40LS	15-12
HR45-40S	15-13
HYDRAULIC SYSTEM	
PILE SLOPE	14-51
TELESCOPING	14-48
WITH POWER PILE SLOPE	13-32
WITHOUT POWER PILE SLOPE	13-30
HYDRAULIC TUBING	
BOOM 9 FT. 6 IN.	
HR45-25, HR45-31, HR45-40S	10-20
LSX	11-6
HYDRAULIC TUBING TELESCOPING	
BOOM 9 FT. 6 IN.	
HR45-25, HR45-31, HR45-40S	10-8
HYDRAULIC VALVE	11-28
HR45-25, HR45-31, HR45-40S	10-26
I	
INSTRUMENT PANEL	
L/LS/LSX	
PRESSURIZED	2-24
WIDE CAB	
STANDARD AND R/RS	2-20
INTERIOR COWLING	
SLIDING CAB	
WIDE	4-26
WIDE FIXED CAB	4-22

TABLE OF CONTENTS (Continued)

DESCRIPTION	PAGE
J	
JUNCTION BLOCK	
BOOM AND ATTACHMENT.....	9-68
JOYSTICK.....	9-66
L	
LABELS.....	1-14
LEAK OIL CIRCUIT	
HR45-25, HR45-31, HR45-40S	9-34
L/LS/LSX.....	9-36
LIGHTS.....	11-31
HR45-25, HR45-31, HR45-40S	10-28
L/LS/LSX	
⇒S/N B2271510	4-12
S/N B2271511⇒	4-16
LIGHTS AND HAND RAIL	
STANDARD AND R/RS.....	4-10
LIMIT SWITCH	
27 DEGREES	1-16
L/LS/LSX.....	1-18
LIMIT SWITCH MOUNTING	
HR45-40LS	15-14
HR45-40S	15-16
LOAD LIMITER.....	4-30
LOAD SENSING CIRCUIT	
HR45-25, HR45-31, HR45-40S	9-38
L/LS/LSX.....	9-39
LOAD SENSING SWITCH	9-65
LOWER LIMIT SWITCH	12-19
M	
MAIN PUMP	9-62
MAIN PUMP ATTACHING PARTS	9-60
MAIN PUMP CIRCUIT.....	9-58
MAIN PUMP CONTROL VALVE.....	9-63
MAIN VALVE	
SPREADER TYPE.....	13-16
MAINFRAME	
B665.....	13-2
O	
OIL COOLER SOLENOID VALVE	9-21
OIL RESERVOIR.....	9-14
OIL RETURN MANIFOLD	9-18
P	
PARK BRAKE	8-6
PARK BRAKE CIRCUIT	
L/LS/LSX.....	8-18
PARK BRAKE CONTROL VALVE	
L/LS/LSX.....	8-16

TABLE OF CONTENTS (Continued)

DESCRIPTION	PAGE
P (continued)	
PARK BRAKE SOLENOID VALVE	8-13
PEDAL ARRANGEMENT	
SLIDING CAB	2-18
WIDE FIXED CAB.....	2-16
PILOT CIRCUIT	
HR45-25, HR45-31, HR45-40S	9-28
L/LS/LSX.....	9-29
PLANETARY GEAR	
INTERMEDIATE	
DINAMIC GEAR.....	14-12
PRESSURE SWITCH.....	9-40
PULLEY BLOCK.....	12-6
PUMP CONNECTIONS.....	3-32
PUMP DRIVE AND SHAFT	5-6
PUMP DRIVE SHAFT	9-64
R	
RADIATOR AND FITTINGS.....	3-24
RADIATOR FITTINGS	
HYDRAULICS AND BRAKE COOLING.....	3-30
REDUCING GEAR	
DINAMIC OIL.....	14-18
ROTATION VALVE ASSEMBLY	
DUAL SPEED	13-14
ROTATOR ASSEMBLY	14-4
WITH POWER PILE SLOPE	13-20
WITHOUT POWER PILE SLOPE.....	13-18
ROTATOR BRAKE RELEASE VALVE	14-55
ROTATOR FRAME.....	14-3
ROTATOR MOTOR	
COMER.....	14-8
ROTATOR MOTOR AND TRANSMISSION ASSEMBLY	
B665.....	13-10
ROTATOR MOTOR TRANSMISSION.....	14-6
ROTATOR VALVE	14-54
ROTATOR VALVE ASSEMBLY	
WITH POWER PILE SLOPE	13-40
S	
SEAT.....	2-9
SERVICE BRAKE	
OIL COOLED BRAKE.....	8-4
SERVICE BRAKE CONTROL VALVE	
L/LS/LSX.....	8-15
SIDE-SHIFT CABLE SUPPORT	14-36
SIDE-SHIFT CYLINDER	
A672.....	14-53
B665.....	13-12
SIDE-SHIFT CYLINDER VALVE	14-62

TABLE OF CONTENTS (Continued)

DESCRIPTION	PAGE
S (continued)	
SLIDING BLOCKS	
LSX.....	11-22
RS/LS.....	10-18
STANDARD.....	10-16
SLIDING FRAME	
L/LS/LSX.....	1-22
SOLENOID VALVE	
SLIDING CAB.....	9-71
SOLENOID VALVE BANK	
HR45-40LS.....	15-6
HR45-40S.....	15-8
SOLENOID VALVE GROUP.....	12-20
SOUND REDUCTION.....	17-24
SPEED REDUSER	
DINAMIC OIL.....	14-10
SPREADER CONTROL VALVE.....	14-58
SPREADER FRAME	
WITH POWER PILE SLOPE.....	14-24
WITHOUT POWER PILE SLOPE.....	14-25
SPREADER LIGHTS.....	14-40
SPREADER VALVE.....	9-54
STABILIZER CYLINDER.....	15-18
STABILIZER MOUNTING.....	15-17
STEER AXLE	
LIMITED STROKE.....	7-12
STANDARD AND R/RS	
L/LS/LSX.....	7-10
STEER AXLE MOUNTING	
LIMITED STROKE.....	7-8
R/L/LS/LSX.....	7-6
STANDARD.....	7-4
STEER TIRE AND WHEEL	
18 X 25 BRIDGESTONE.....	17-22
18 X 25 GOOD YEAR	
HR45-25, HR45-31, HR45-40S.....	17-15
18 X 25 MICHELIN	
HR45-24, HR45-31, HR45-40S.....	17-17
18 X 25 PLAIN.....	17-20
18 X 33 BRIDGESTONE	
HR45-36L, HR45-40LS.....	17-16
18 X 33 GOODYEAR.....	17-19
18 X 33 MICHELIN	
HR45-36L, HR45-40LS.....	17-18
21 X 25 BRIDGESTONE.....	17-14
21 X 25 GOOD YEAR.....	17-13
STEERING CIRCUIT	
HR45-25, HR45-31, HR45-40S.....	9-10
L/LS/LSX.....	9-12
SUPPORT SLIDING FRAME	
L/LS/LSX.....	1-24

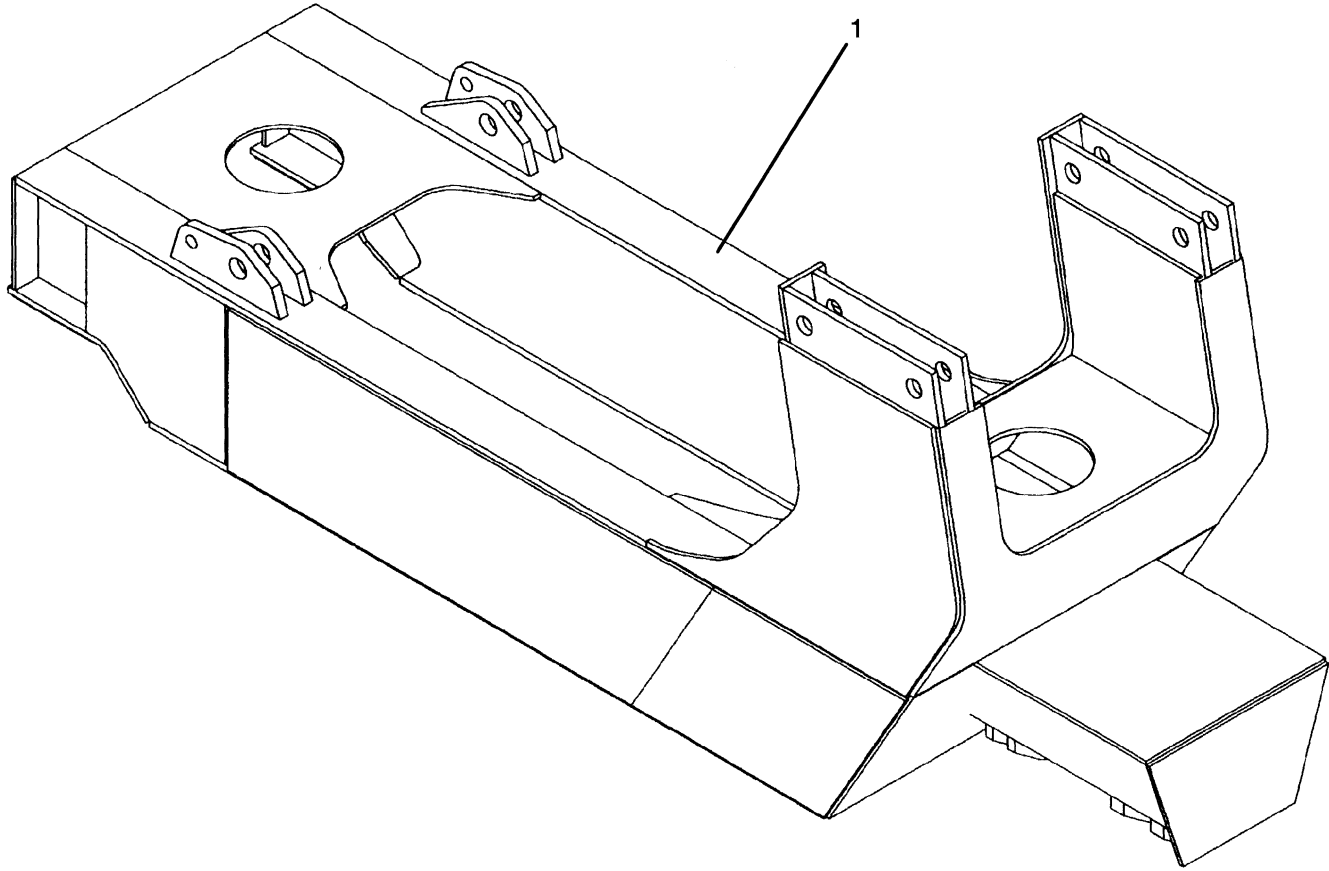
TABLE OF CONTENTS (Continued)

DESCRIPTION	PAGE
T	
TELESCOPING	
BOOM 9 FT. 6 IN.	
HR45-25, HR45-31, HR45-40S.....	10-7
LSX.....	11-10
TELESCOPING CIRCUIT	
LSX.....	11-9
TELESCOPING TRANSMISSION	
DINAMIC OIL.....	14-16
TELESCOPING TRANSMISSION MOTOR	
COMER.....	14-22
TOOL KIT.....	17-32
TORQUE CONVERTER AND DRIVE PLATE.....	5-8
TRANSMISSION CASE AND REAR COVER.....	5-4
TRANSMISSION COOLING LINES.....	3-26
TRANSMISSION TELESCOPING MOTOR.....	14-28
TUBING TELESCOPIC CYLINDER	
LSX.....	11-12
TWIST LOCK ARRANGEMENT.....	13-34
TWIST LOCK ASSEMBLY	
A672.....	14-32
B665.....	13-36
TWIST LOCK CYLINDER.....	13-38
TWIST LOCK INDICATOR LIGHTS.....	11-30
HR45-25, HR45-31, HR45-40S.....	10-27
W	
WEAR PADS.....	14-30
B665.....	13-6
WINCH.....	12-12
WINCH ATTACHING PARTS.....	12-10
WINCH CIRCUIT.....	12-4
WINCH REDUCTION GEAR.....	12-14
WIRE HARNESS	
CAB.....	4-4
ENGINE.....	4-6
MAIN.....	14-38
MAIN FRAME.....	4-2
L/LS/LSX.....	4-3
SENSORS.....	14-39
TRANSMISSION.....	4-8

SECTION 1
FRAME

DESCRIPTION	PAGE
CAB RAILS	
SLIDING CAB	
L/LS/LSX	1-20
CHASSIS BOX	
L/LS/LSX.....	1-10
OPTIONAL COVERS AND HAND RAILS.....	1-8
STANDARD AND R/RS	
LEFT HAND	1-6
COUNTERWEIGHT	1-4
FRAME.....	1-2
L/LS/LSX.....	1-3
HOOD.....	1-12
HYDRAULIC MOTOR SUPPORT	
SLIDING CAB	
L/LS/LSX	1-26
LABELS.....	1-14
LIMIT SWITCH	
27 DEGREES	1-16
L/LS/LSX.....	1-18
SLIDING FRAME	
L/LS/LSX.....	1-22
SUPPORT SLIDING FRAME	
L/LS/LSX.....	1-24

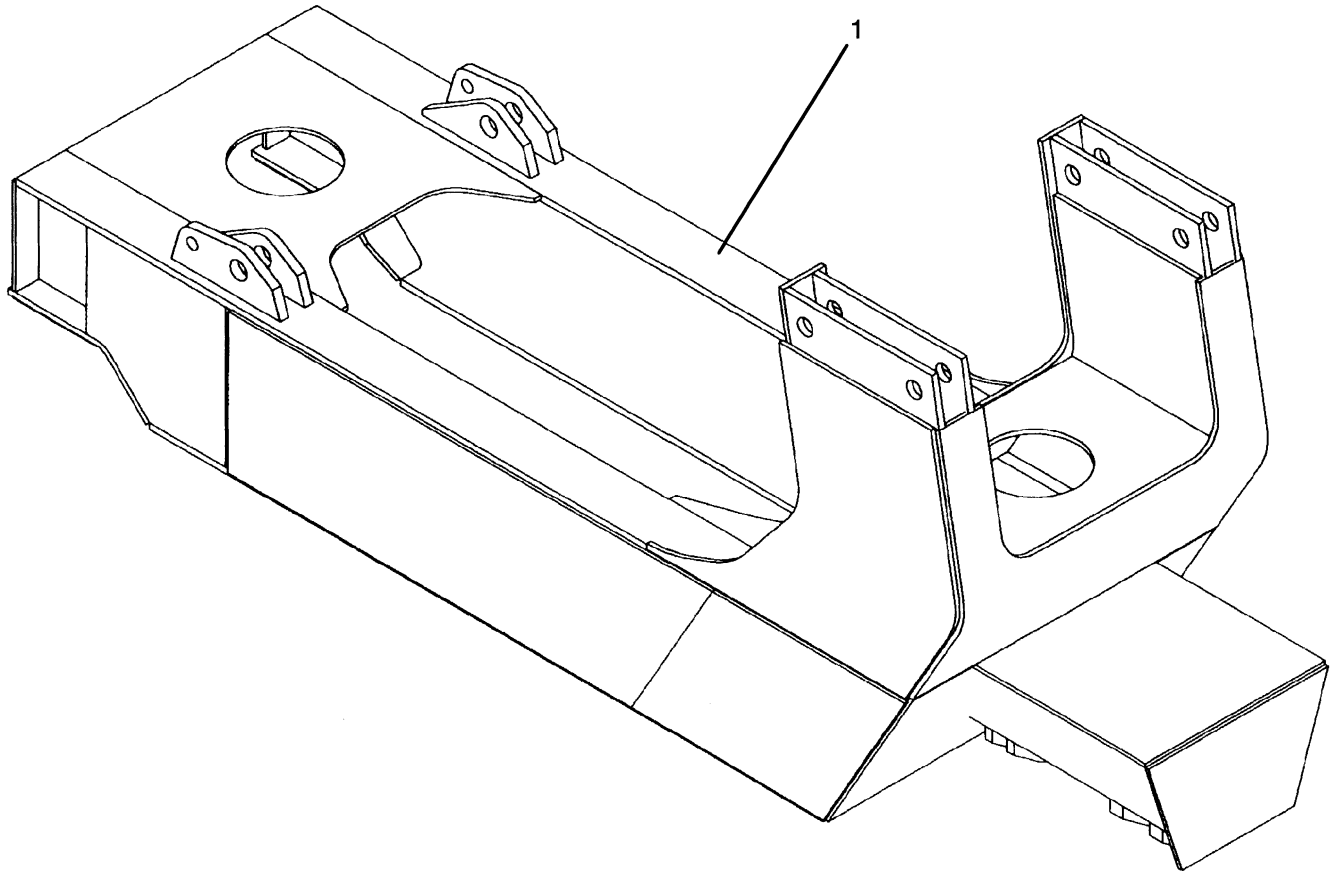
FRAME (Figure 1-1)



HP120599

ITEM	PART NO.	DESCRIPTION	QTY
1	1468878	Frame	1
1	1488109	Frame (RS)	1

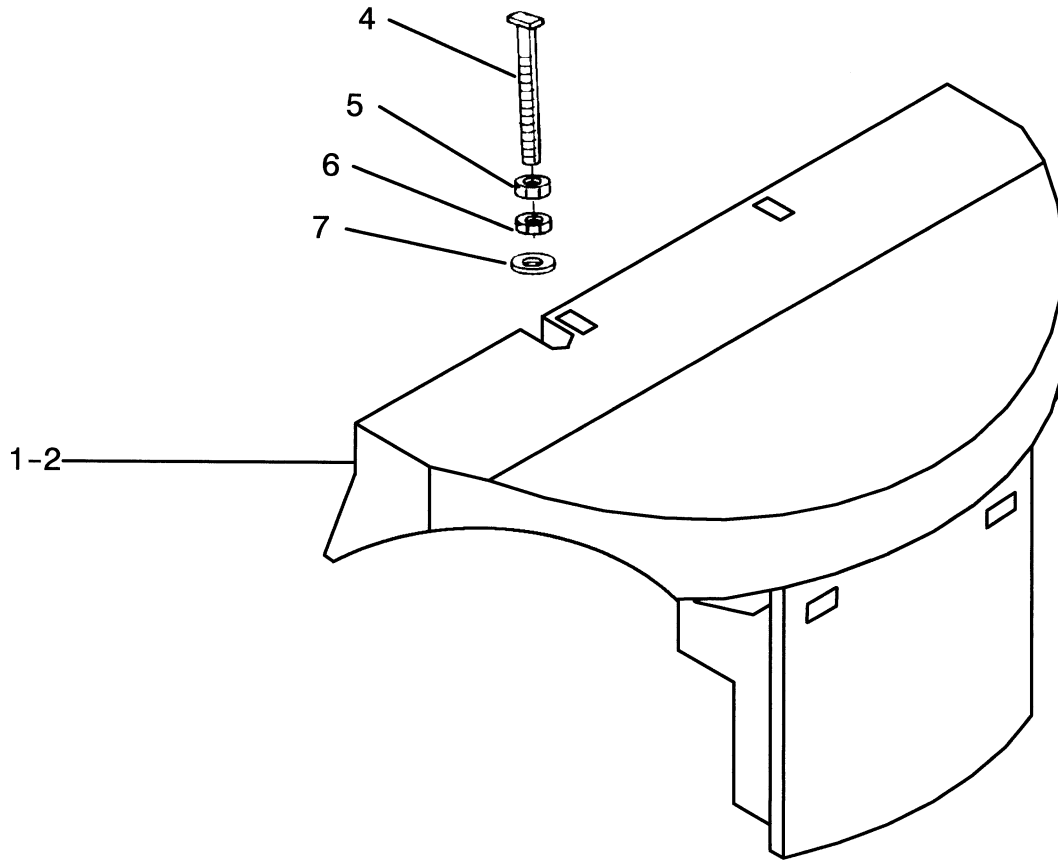
**FRAME (Figure 1-2)
L/LS/LSX**



HP120605

ITEM	PART NO.	DESCRIPTION	QTY
1	1558243	Frame (LSX)	1
1	1585925	Frame (L/LS).....	1

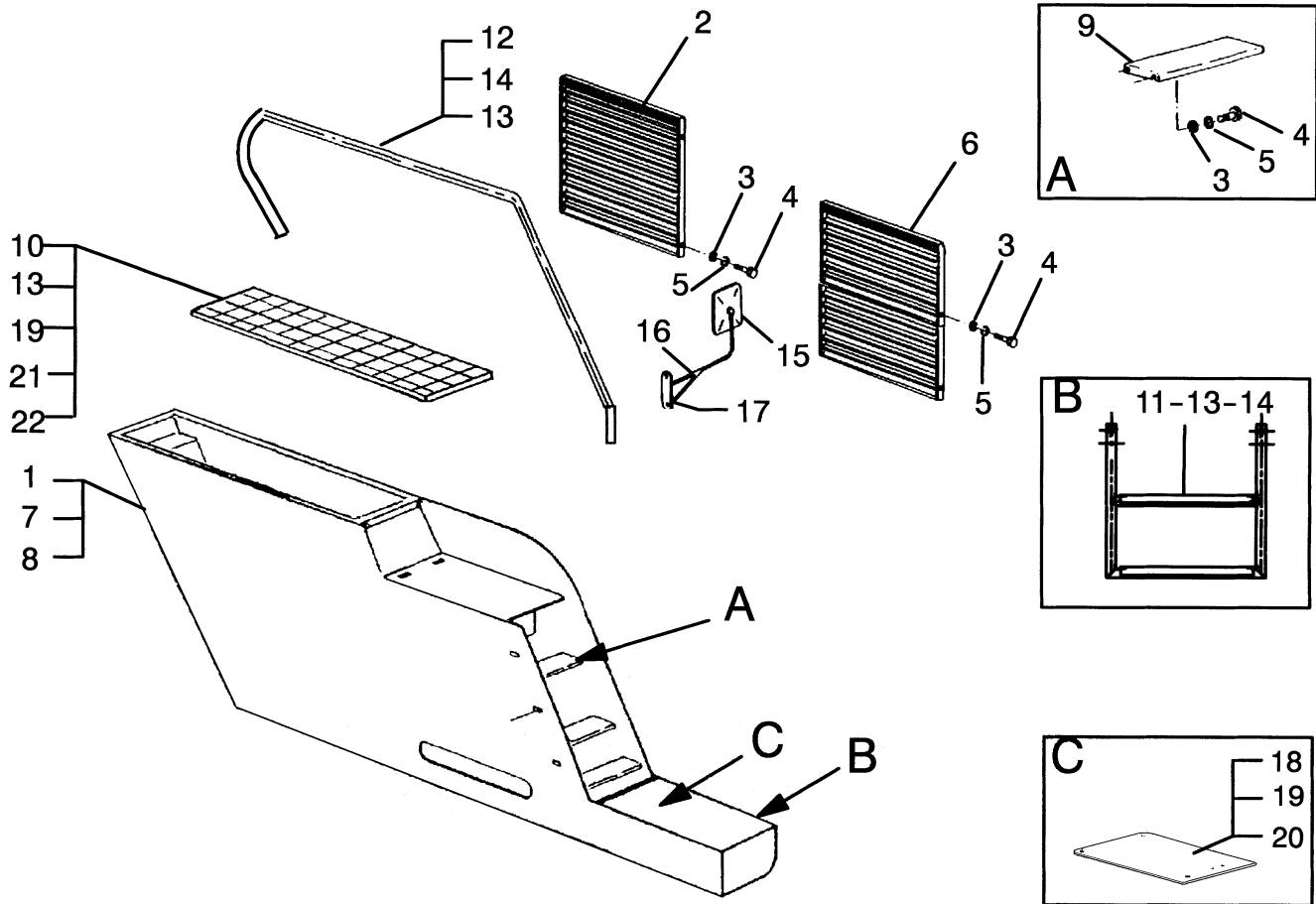
COUNTERWEIGHT (Figure 1-3)



HP120708

ITEM	PART NO.	DESCRIPTION	QTY
1	1550780	Counterweight (HR45-25).....	1
1	1550782	Counterweight (HR45-31, HR45-36L, HR45-40LS).....	1
2	1550783	Counterweight (HR45-40S)	1
2	1558261	Counterweight (LSX)	1
4	1468955	Bolt	4
5	1468956	Nut	4
6	1468957	Nut	4
7	1468958	Washer	4

CHASSIS BOX (Figure 1-4) STANDARD AND R/RS LEFT HAND

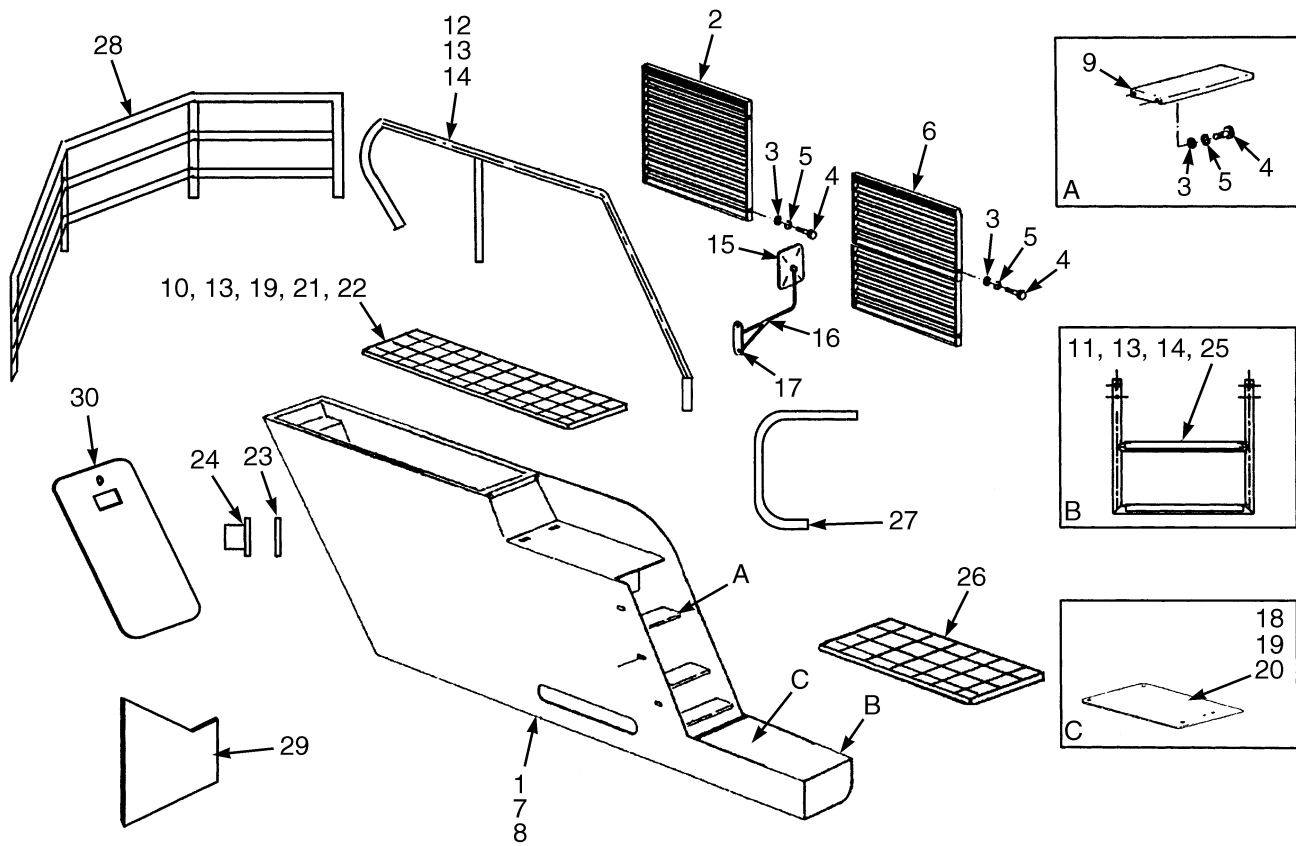


HP120601

**CHASSIS BOX
STANDARD AND R/RS
LEFT HAND**

ITEM	PART NO.	DESCRIPTION	QTY
1	1468879	Housing	1
1	1549300	Frame Box (LH QSM)	1
2	1468880	Grill	1
3	1468345	Washer	14
4	136681	Capscrew.....	14
5	1468114	Washer	14
6	1468884	Grill	1
7	1488545	Washer	10
8	1468886	Bolt	20
9	1468887	Step	2
10	1468888	Bolt	9
11	1475742	Step	1
12	1527450	Rail	1
13	1468893	Nut.....	18
14	1468894	Screw.....	18
15	1468895	Mirror.....	1
16	1468896	Bracket.....	1
17	1468897	Screw.....	2
18	1468898	Plate	1
19	1468899	Screw.....	4
20	1468900	Catch	4
21	1468901	Fitting.....	4
22	1468902	Grill	1

CHASSIS BOX (Figure 1-5) OPTIONAL COVERS AND HAND RAILS

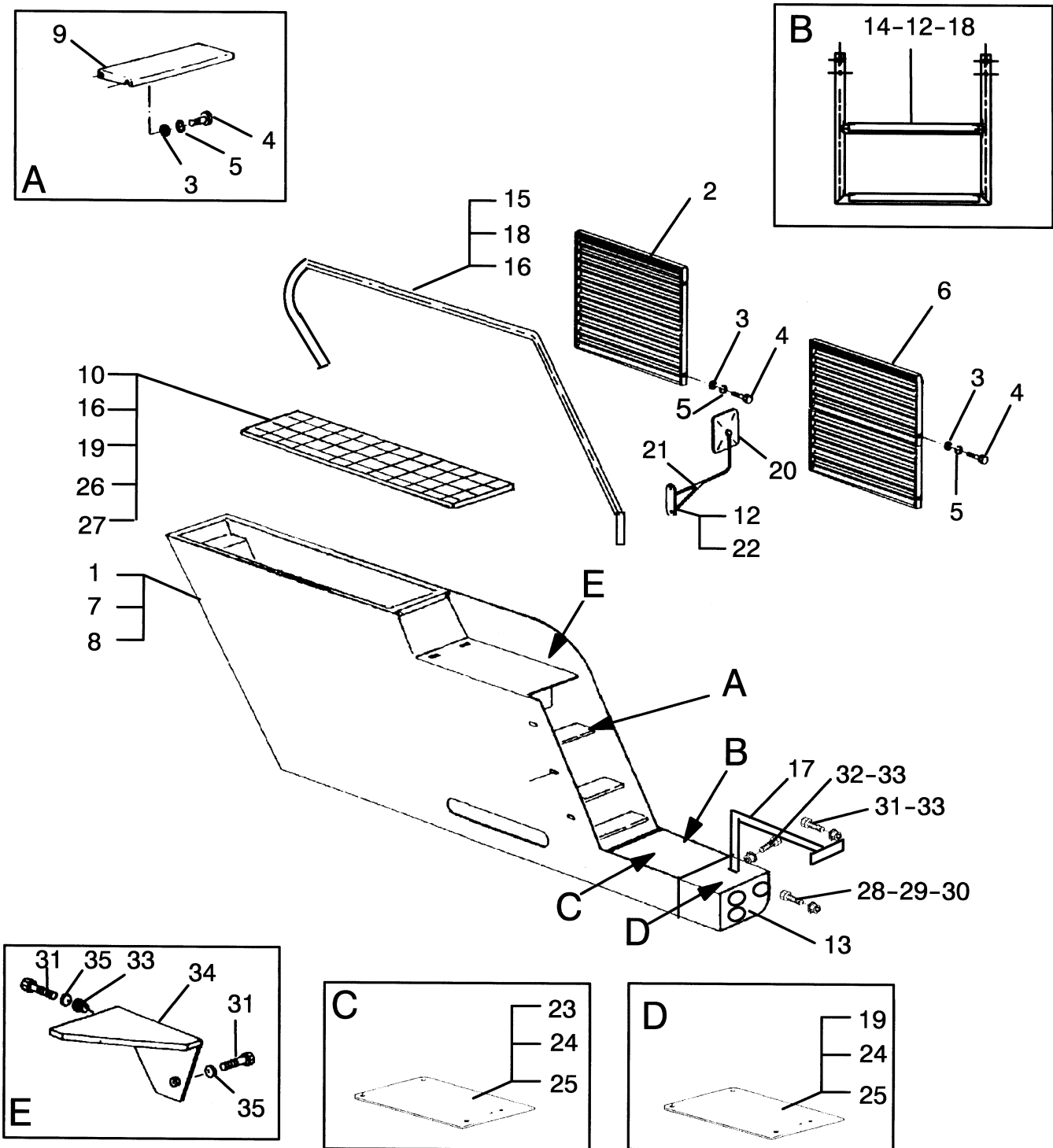


HP120738

CHASSIS BOX OPTIONAL COVERS AND HAND RAILS

ITEM	PART NO.	DESCRIPTION	QTY
1	1468879	Housing	1
1	1549300	Frame Box (LH QSM)	1
2	1559801	Grill (Large).....	1
3	1468345	Washer	14
4	136681	Capscrew.....	14
5	1468114	Washer	14
6	1559802	Grill (Small).....	1
7	1488545	Washer	10
8	1468886	Bolt	20
9	1468887	Step	2
10	1468888	Bolt	9
11	1549304	Gril Step.....	4
12	1549306	Hand Rail.....	1
13	1468893	Nut	18
14	1468894	Screw.....	18
15	1468895	Mirror	1
16	1468896	Bracket.....	1
17	1468897	Screw.....	2
18	1468898	Plate	1
19	1468899	Screw.....	4
20	1468900	Catch	4
21	1468901	Fitting.....	4
22	1468902	Grill	1
23	1549302	Bushing.....	1
24	1549303	Plug	1
25	1549307	Step (Grid)	6
26	1549308	Step	2
27	1549309	Hand Rail.....	2
28	1549310	Guard Rail	1
29	1549311	Mad Flap Kit	2
30	1549312	Inspection Door	1

CHASSIS BOX (Figure 1-6) L/LS/LSX

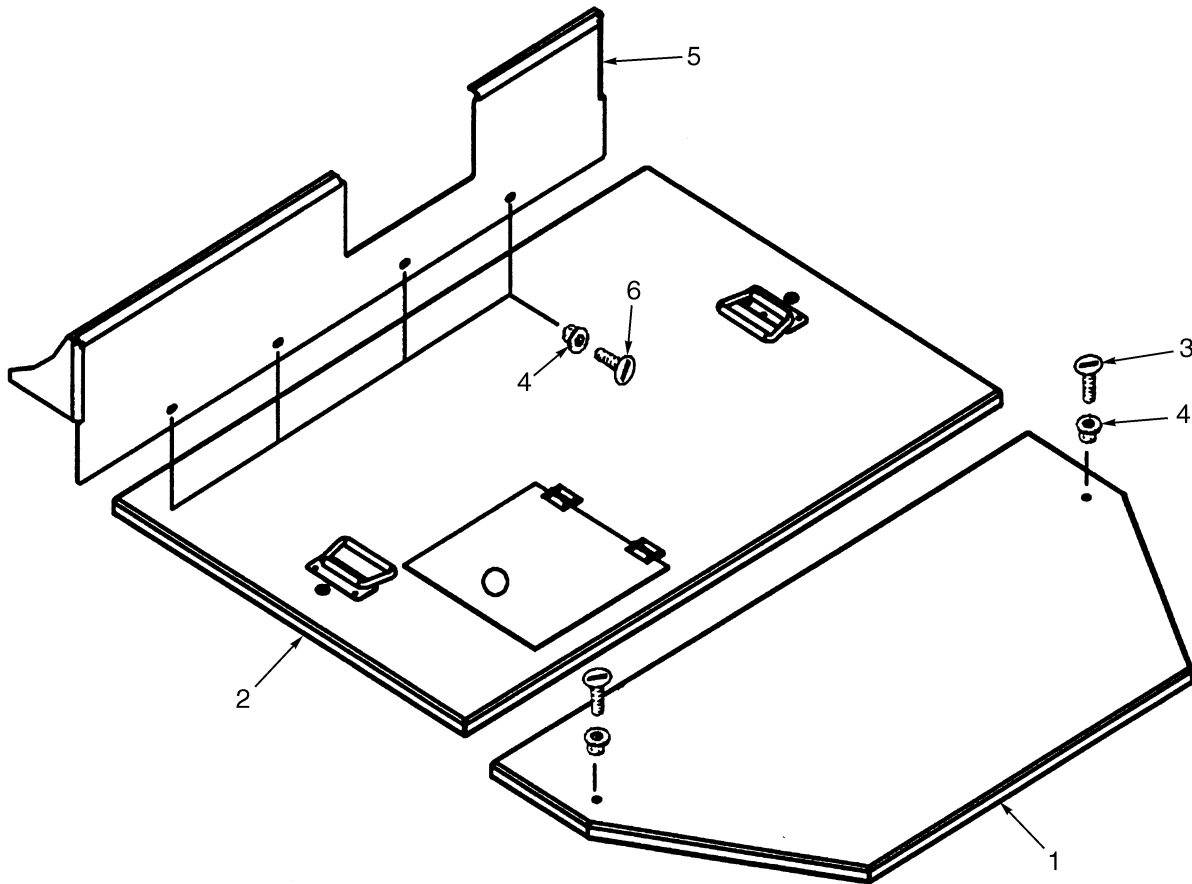


HP120606

**CHASSIS BOX
L/LS/LSX**

ITEM	PART NO.	DESCRIPTION	QTY
1	1468879	Housing	1
1	1549300	Frame Box (LH QSM)	1
2	1559801	Grill (Large).....	1
3	1468345	Washer	14
4	136681	Capscrew.....	14
5	1468114	Washer	14
6	1559802	Grill (Small).....	1
7	1488545	Washer	10
8	1468886	Bolt	20
9	1468887	Step	2
10	1468888	Bolt	9
11	1468224	Bolt	4
12	1468223	Nut	4
13	1475741	Box (Left)	1
14	1475742	Step	1
15	1527450	Rail	1
16	1468893	Nut	8
17	1475743	Ramp	1
18	1468894	Screw.....	9
19	1475744	Platform	1
20	1468895	Mirror	1
21	1468896	Bracket.....	1
22	1468897	Screw.....	2
23	1468898	Plate	1
24	1468899	Screw.....	8
25	1468900	Catch	4
26	1468901	Fitting.....	4
27	1468902	Grill	1
28	1470558	Bolt	6
29	1469857	Washer	6
30	1470942	Nut	6
31	136985	Capscrew.....	4
32	1472097	Bolt	1
33	1468893	Nut	5
34	1475747	Step	1
35	1468907	Washer	2

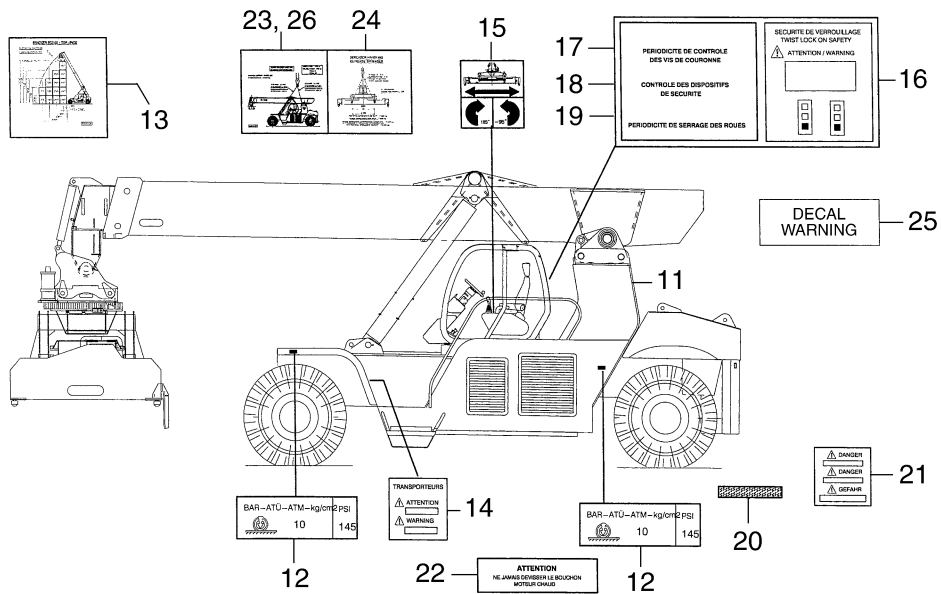
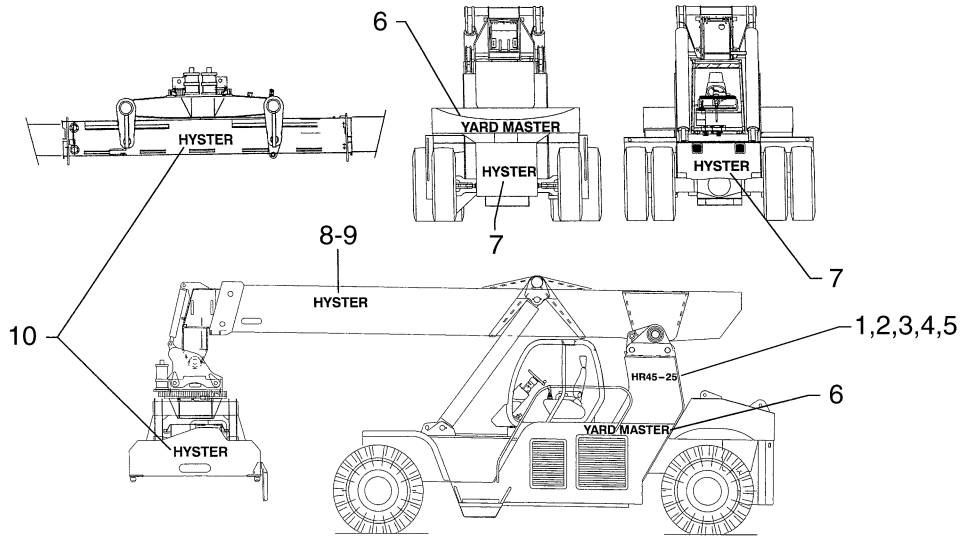
HOOD (Figure 1-7)



HP120709

ITEM	PART NO.	DESCRIPTION	QTY
1	1549316	Engine Cover	1
2	1480298	Cover	1
3	1471196	Bolt	2
4	1468223	Nut	6
5	1549315	Cover (Front Insolation)	1
6	1468224	Bolt	4

LABELS (Figure 1-8)



HP000755

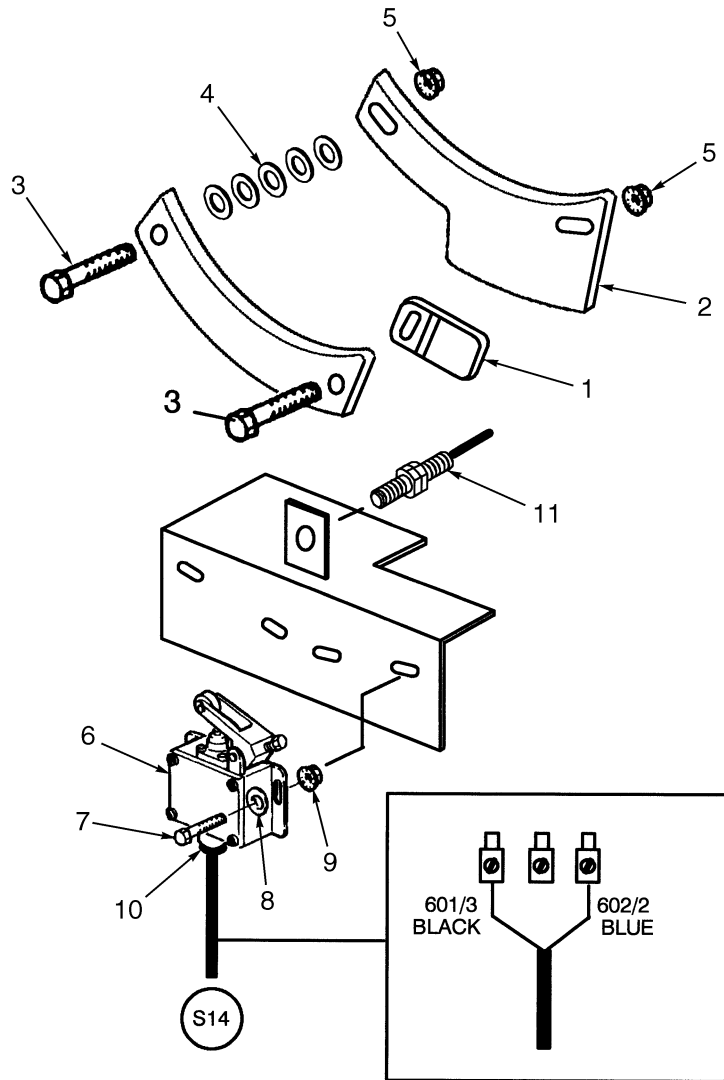
LABELS

ITEM	PART NO.	DESCRIPTION	QTY
1	1507007	Label (HR40-25)	2
2	1507008	Label (HR45-31)	2
3	1507009	Label (HR45-40S).....	2
4	1507010	Label (HR45-36L)	2
5	1507011	Label (HR45-40LS).....	2
6	1507012	Label (Yardmaster)	3
7	1507013	Label (Hyster) (Black)	2
8	1507039	Label (Hyster) (Black)	1
9	1507014	Label (Hyster) (Black)	1
10	1507015	Label (Hyster) (White)	3
11	1507017	Label (25KM/U)	1
12	1507018	Label (Tire Pressure).....	4
12	a 1510378	Label (Tire Pressure).....	4
13	b	Label (Capacity Chart).....	1
14	1507023	Label (Tire Pressure).....	2
15	1507024	Label (Rotation/Extension)	1
16	1507025	Label (Twistlock On)	1
17	1507026	Label (Check Rotator Bolts).....	1
18	1507027	Label (Check Security)	1
19	1507028	Label (Wheel Nut Torque).....	1
20	1491187	Safety Tread.....	5
21	1507030	Label (Accumulator).....	1
22	1507031	Label (Radiator Cap)	1
23	1507033	Label (Lifting Point).....	1
24	1507034	Label (Spreader Lift Point)	1
25	1507035	Label (Warning)	1
26	1507037	Label (Boom Lift Point)	1
26	1559621	Label (Lifting).....	1

FOOTNOTES:

- a** L, LS, LSX Models
- b** See Your Local Hyster Dealer

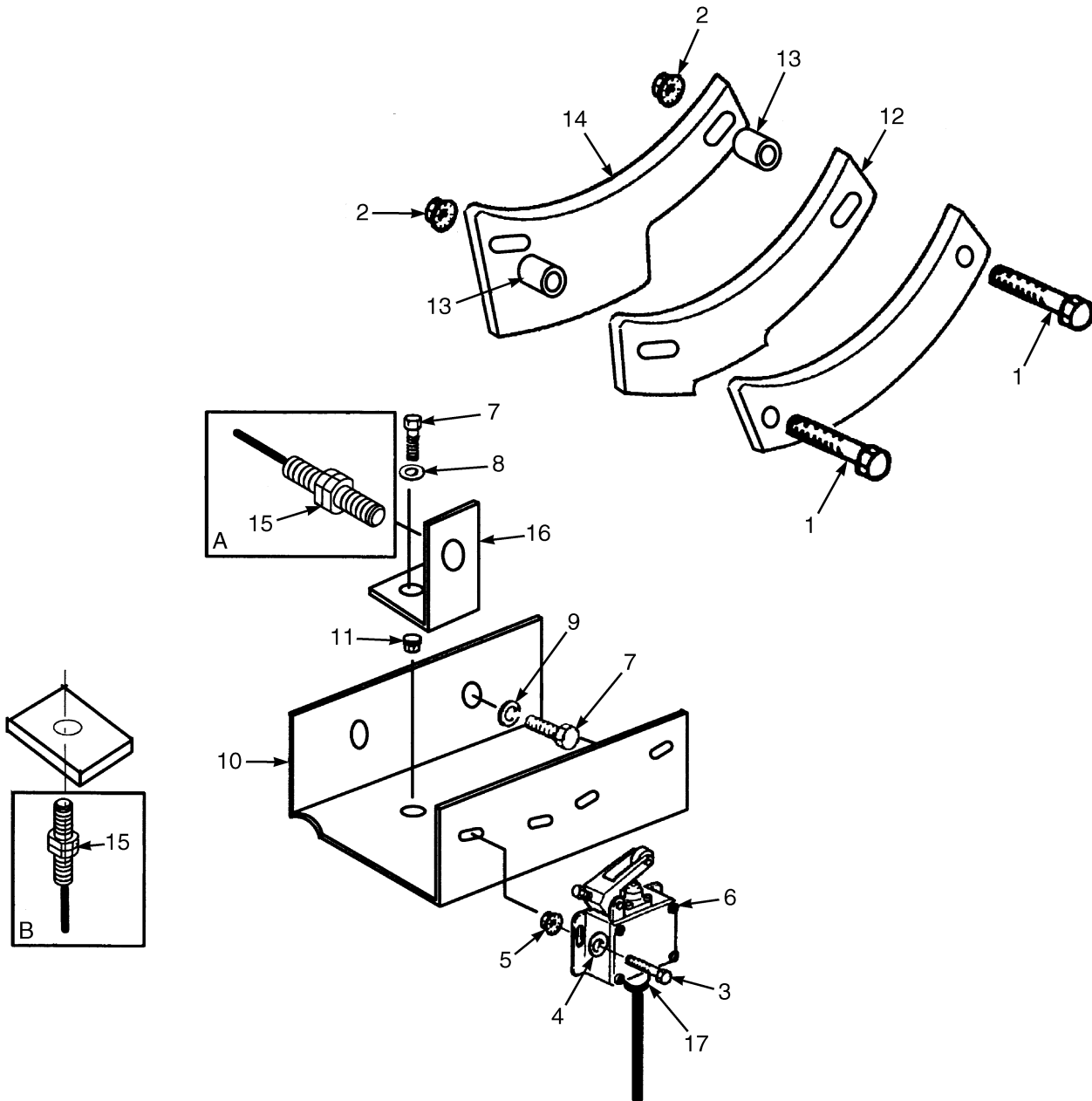
LIMIT SWITCH (Figure 1-9) 27 DEGREES



HP120604

ITEM	PART NO.	DESCRIPTION	QTY
1	1480287	Cam	1
2	1470946	Plate	1
3	1470356	Bolt	1
4	1469857	Washer	5
5	1470942	Nut	2
6	1470943	Switch	1
7	292501	Capscrew	2
8	1468159	Washer	2
9	1468262	Nut	2
10	1470601	Gland	1
11	1470947	Switch	2

LIMIT SWITCH (Figure 1-10) L/LS/LSX

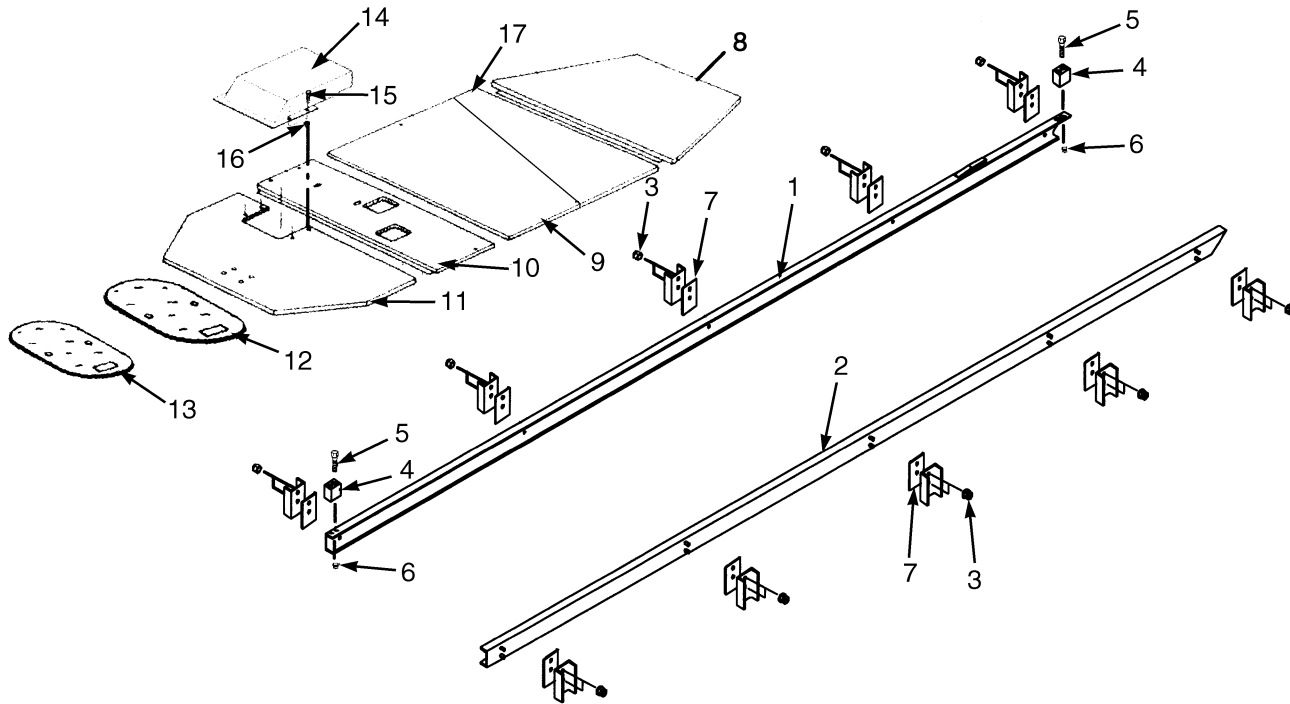


HP120740

**LIMIT SWITCH
L/LS/LSX**

ITEM	PART NO.	DESCRIPTION	QTY
1	1470940	Bolt	1
2	1470942	Nut	1
3	292501	Capscrew.....	2
4	1468159	Washer	2
5	1468262	Nut	2
6	1470943	Switch	1
7	1468371	Nut	3
8	1469149	Washer	2
9	1468373	Washer	1
10	1475737	Support.....	1
11	1468893	Nut	1
12	1470944	Cam	1
13	1470945	Spacer	2
14	1470946	Plate	1
15	1470947	Switch	1
16	1470949	Support.....	1
17	1470601	Gland.....	1

CAB RAILS (Figure 1-11) SLIDING CAB L/LS/LSX



HP120840

ITEM	PART NO.	DESCRIPTION	QTY
1	1475754	Rail	1
2	1475755	Rail	1
3	1468941	Nut	20
4	1470953	Stop	2
5	1470954	Bolt	4
6	1470955	Nut	4
7	1475756	Spacer	25
8	1470957	Plate	1
9	1558258	Cover (Center Front)	1
10	1470959	Plate	1
11	1470960	Plate	1
12	1470961	Plate	1
13	1475757	Plate	1
14	1470962	Cover	1
15	136681	Capscrew	4
16	1468223	Nut	4
17	1558259	Cover (Center Rear)	1

Thank you so much for reading.
Please click the “Buy Now!”
button below to download the
complete manual.



After you pay.

You can download the most
perfect and complete manual in
the world immediately.

Our support email:

ebooklibonline@outlook.com