

PARTS MANUAL

**S6.00-7.00XL
(C024)**

CUSTOMER EDITION

HYSTER

SECTIONS

1	FRAME
2	ENGINES
3	FUEL SYSTEM
4	ELECTRICAL SYSTEM
5	TRANSMISSION
6	STEERING SYSTEM
7	BRAKE SYSTEM
8	HYDRAULIC SYSTEM
9	MAST-TWO STAGE LIMITED FREE-LIFT
10	MAST-THREE STAGE FULL FREE-LIFT
11	OPTIONS
12	NUMERICAL INDEX

TABLE OF CONTENTS

DESCRIPTION	PAGE
A	
ACCELERATOR PEDAL AND BRACKET	
MONOTROL	3-26
WITH FORWARD AND REVERSE LEVER.....	3-24
AIR FILTER	
DIESEL	3-2
LPG	3-4
ALTERNATOR AND MOUNTING	
DIESEL TIER II.....	4-18
ASSEMBLED ENGINE	
LPG	2-24
B	
BRAKE	7-10
BRAKE BOOSTER.....	7-14
BRAKE LINES.....	7-12
C	
CAMSHAFT AND OIL PAN	
LPG	2-32
CARRIAGE	
THREE STAGE FULL FREE-LIFT	10-16
TWO STAGE LIMITED FREE-LIFT.....	9-10
CLUTCH PACK	
POWERSHIFT	
COUNTER, FORWARD, SHORT SHAFT	
D/B 10/2004⇒	5-20
⇒D/B 10/2004	5-18
INPUT, REVERSE, LONG SHAFT	
D/B 10/2004⇒	5-24
⇒D/B 10/2004	5-22
COIL ASSEMBLY	2-26
CONTROL VALVE	
FOUR FUNCTION	8-30
TWO AND THREE FUNCTION	8-22
CONTROL VALVE ATTACHING PARTS WITH FITTINGS	
FOUR FUNCTION	8-32
TWO AND THREE FUNCTION	8-24
CONTROL VALVE ATTACHING TUBES	
FOUR FUNCTION	8-34
TWO AND THREE FUNCTION	8-28
COOLING AND FAN DRIVE	
DIESEL TIER II.....	2-8
COUNTERWEIGHT	1-8
COWL AND FLOOR PLATES	1-10
CRANKSHAFT AND PISTONS	
DIESEL TIER II.....	2-50
CYLINDER BLOCK	
DIESEL TIER II.....	2-44
LPG	2-30
CYLINDER HEAD	

TABLE OF CONTENTS (Continued)

DESCRIPTION	PAGE
C (continued)	
LPG	2-40
CYLINDER HEAD AND INDUCTION MANIFOLD	
DIESEL TIER II	2-46
D	
DIFFERENTIAL AND CARRIER	
POWERSHIFT	5-30
DISTRIBUTOR ASSEMBLY	4-24
DRIVE ADAPTOR	
DIESEL TIER II	2-68
DRIVE AXLE	5-28
E	
ELECTRICAL	
ALTERNATOR AND BATTERY	
DIESEL TIER II	4-10
LPG	4-6
ELECTRICAL SYSTEM	
DIESEL TIER II	4-14
ENGINE FUEL SUPPLY	
LPG	3-16
ENGINE MOUNTING	
LPG AND DIESEL	2-22
EXHAUST DIESEL	
COUNTERWEIGHT	2-14
OVERHEAD	2-18
EXHAUST LPG	
COUNTERWEIGHT	2-12
OVERHEAD	2-16
EXHAUST MANIFOLD	
DIESEL TIER II	2-58
LPG	2-20
F	
FAN DRIVE AND ALTERNATOR MOUNTING	
LPG	2-6
FLYWHEEL AND HOUSING	
LPG AND DIESEL	2-28
FORK	1-28
FREE-LIFT	
THREE STAGE FULL FREE-LIFT	10-12
FREE-LIFT CYLINDER	
THREE STAGE FULL FREE-LIFT	10-14
FUEL FILTER	
TIER II	
DIESEL	3-12
FUEL INJECTION PUMP	
DIESEL TIER II	
⇒S/N C024V01751B	2-64

TABLE OF CONTENTS (Continued)

DESCRIPTION	PAGE
F (continued)	
WITH BLEED BACK SYSTEM	
S/N C024V01752B⇒	2-66
FUEL SUPPLY SYSTEM	
DIESEL TIER II	
SHEET 1 OF 2	3-6
SHEET 2 OF 2	3-8
LPG	3-14
FULL SUSPENSION SEAT	
PENDING PER ECN 74932⇒	1-22
SHEET 1 OF 2	
⇒PENDING PER ECN 74932	1-18
SHEET 2 OF 2	
⇒PENDING PER ECN 74932	1-20
G	
GAUGE CLUSTER	4-26
GENERAL TRUCK	1-2
H	
HEADER HOSE	
THREE STAGE FULL FREE-LIFT	11-4
TWO STAGE LIMITED FREE-LIFT	11-2
HOOD	1-6
HYDRAULIC FILTER	8-18
HYDRAULIC PUMP	
AND	
ATTACHING PARTS	
PENDING PER ECN 100183⇒	8-6
⇒Pending Per ECN 100183	8-4
HYDRAULIC SYSTEM	8-2
I	
INNER MAST	
THREE STAGE FULL FREE-LIFT	10-6
TWO STAGE LIMITED FREE-LIFT	9-4
INSTRUMENT PANEL	4-2
INTERMEDIATE MAST	
THREE STAGE FULL FREE-LIFT	10-4
L	
LABELS	1-5
LIFT	
TWO STAGE LIMITED FREE-LIFT	9-6
LIFT CYLINDER	
TWO STAGE LIMITED FREE-LIFT	9-8
LOAD BACKREST EXTENSION	1-26
LPG REGULATOR AND LOCK-OFF	3-20

TABLE OF CONTENTS (Continued)

DESCRIPTION	PAGE
M	
MAIN LIFT	
THREE STAGE FULL FREE-LIFT	10-8
MAIN LIFT CYLINDER	
THREE STAGE FULL FREE-LIFT	10-10
MONOTROL PEDAL	3-28
N	
NON-SUSPENSION SEAT	
PENDING PER ECN 74932⇒	1-16
O	
OIL COOLER	
DIESEL TIER II	2-62
OIL FILTER	
DIESEL TIER II	2-60
OIL PAN AND PUMP	
DIESEL TIER II	2-52
OIL PUMP	
LPG	2-42
OUTER MAST	
THREE STAGE FULL FREE-LIFT	10-2
TWO STAGE LIMITED FREE-LIFT	9-2
OVERHEAD GUARD	1-25
P	
PARK BRAKE	7-16
PEDAL LINKAGE	
POWERSHIFT	
PENDING PER ECN 74932⇒	7-6
⇒PENDING PER ECN 74932	7-2
PUMP ADAPTER	
DIESEL TIER II	8-14
R	
RADIATOR	
LPG	2-4
S	
SEAT	
STANDARD WITH OPERATOR RESTRAINT	
DIESEL TIER II	
⇒PENDING PER ECN 74932	1-14
LPG	
⇒PENDING PER ECN 74932	1-12
SEAT MOUNTING	
FULL SUSPENSION	
⇒PENDING PER ECN 74932	1-24
STARTER MOTOR	
DIESEL TIER II	4-22
LPG	4-20

TABLE OF CONTENTS (Continued)

DESCRIPTION	PAGE
S (continued)	
STEERING AXLE	6-6
STEERING COLUMN	6-2
STEERING CONTROL UNIT	6-14
STEERING CYLINDER	
PENDING PER ECN 10403002⇒	6-12
⇒PENDING PER ECN 10403002	6-10
STEERING HYDRAULICS	8-8
STEERING PUMP	8-12
T	
THROTTLE BODY AND LPG MIXER	3-18
THROTTLE LINKAGE	
LPG AND DIESEL	3-22
TILT CYLINDER	8-20
TIMING GEAR	
DIESEL TIER II	2-56
TORQUE CONVERTER	
POWERSHIFT	5-26
TRANSMISSION	
POWERSHIFT	5-2
TRANSMISSION CONTROL LINKAGE	
FORWARD AND REVERSE LEVER	
PENDING PER ECN 74932⇒	5-16
POWERSHIFT	5-12
TRANSMISSION CONTROL VALVE	
POWERSHIFT	5-8
TRANSMISSION GEARS	
POWERSHIFT	5-6
TRANSMISSION HYDRAULIC	
POWERSHIFT	8-16
U	
UNIVERSAL JOINT	
POWERSHIFT	5-27
V	
VALVE COVER AND INLET MANIFOLD	
LPG	2-36
VALVE COVER AND ROCKER ARM SHAFT	
DIESEL TIER II	2-48
W	
WATER PUMP AND OUTLET	
DIESEL TIER II	2-54
WATER SEPARATOR	
TIER II	
DIESEL	3-11
WIRE HARNESS	
COWL	

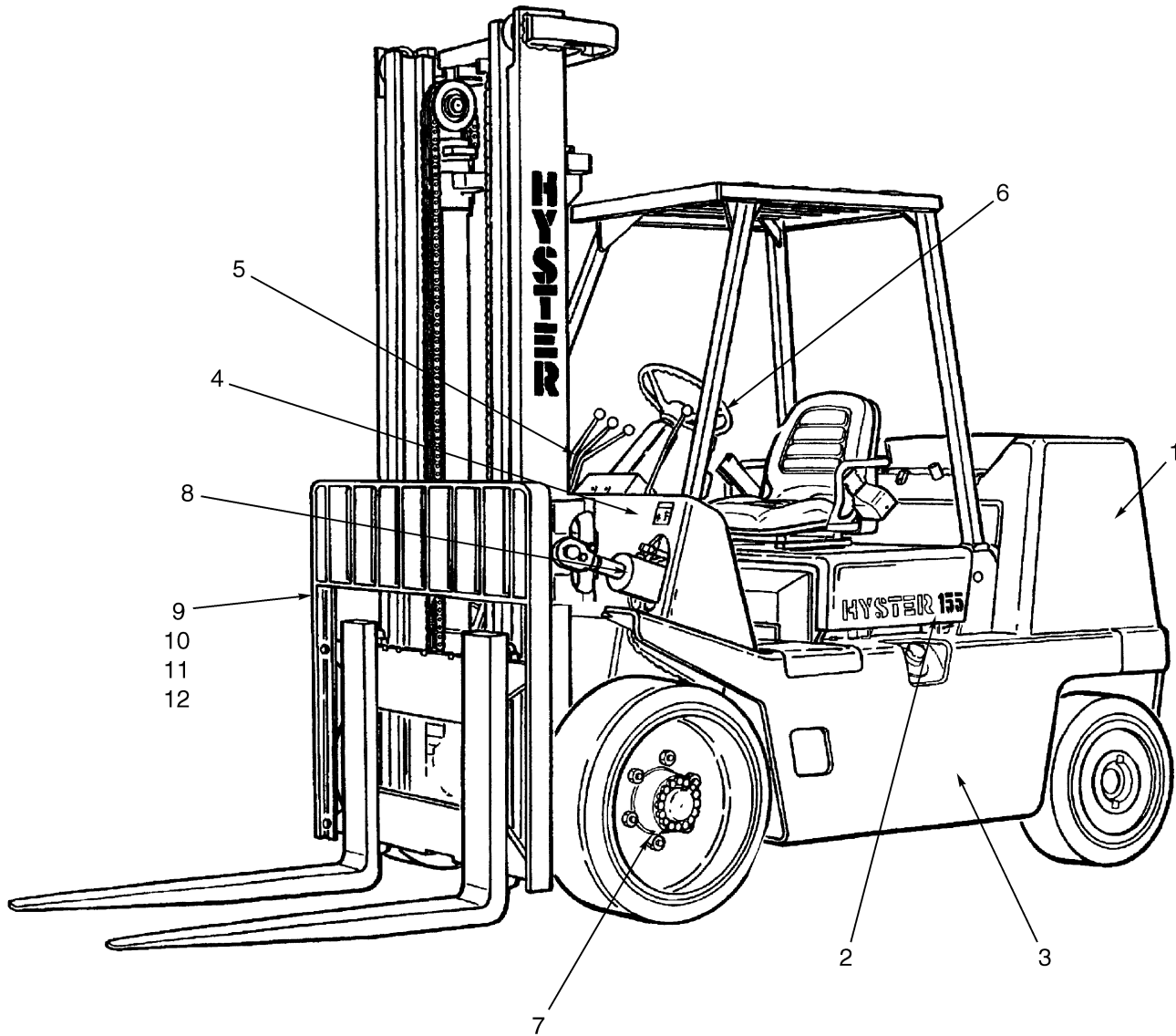
TABLE OF CONTENTS (Continued)

DESCRIPTION	PAGE
W (continued)	
DIESEL TIER II	4-36
LPG	4-34
ENGINE, LPG, GM 4.3L	
SHEET 1 OF 2	4-38
SHEET 2 OF 2	4-40
FORWARD AND REVERSE LEVER	
⇒PENDING PER ECN 74932	4-33
INTERFACE	4-30
LPG REGULATOR	
GM 4.3L.....	4-42
NEUTRAL START	4-32
OPERATOR PRESENCE SYSTEM	
PENDING PER ECN 74932⇒	4-44
WIRE HARNESS (ENGINE)	
DIESEL TIER II	4-28

**SECTION 1
FRAME**

DESCRIPTION	PAGE
COUNTERWEIGHT	1-8
COWL AND FLOOR PLATES	1-10
FORK.....	1-28
FULL SUSPENSION SEAT	
PENDING PER ECN 74932⇒	1-22
SHEET 1 OF 2	
⇒PENDING PER ECN 74932	1-18
SHEET 2 OF 2	
⇒PENDING PER ECN 74932	1-20
GENERAL TRUCK	1-2
HOOD.....	1-6
LABELS.....	1-5
LOAD BACKREST EXTENSION.....	1-26
NON-SUSPENSION SEAT	
PENDING PER ECN 74932⇒	1-16
OVERHEAD GUARD.....	1-25
SEAT	
STANDARD WITH OPERATOR RESTRAINT	
DIESEL TIER II	
⇒PENDING PER ECN 74932	1-14
LPG	
⇒PENDING PER ECN 74932	1-12
SEAT MOUNTING	
FULL SUSPENSION	
⇒PENDING PER ECN 74932	1-24

GENERAL TRUCK (Figure 1-1)

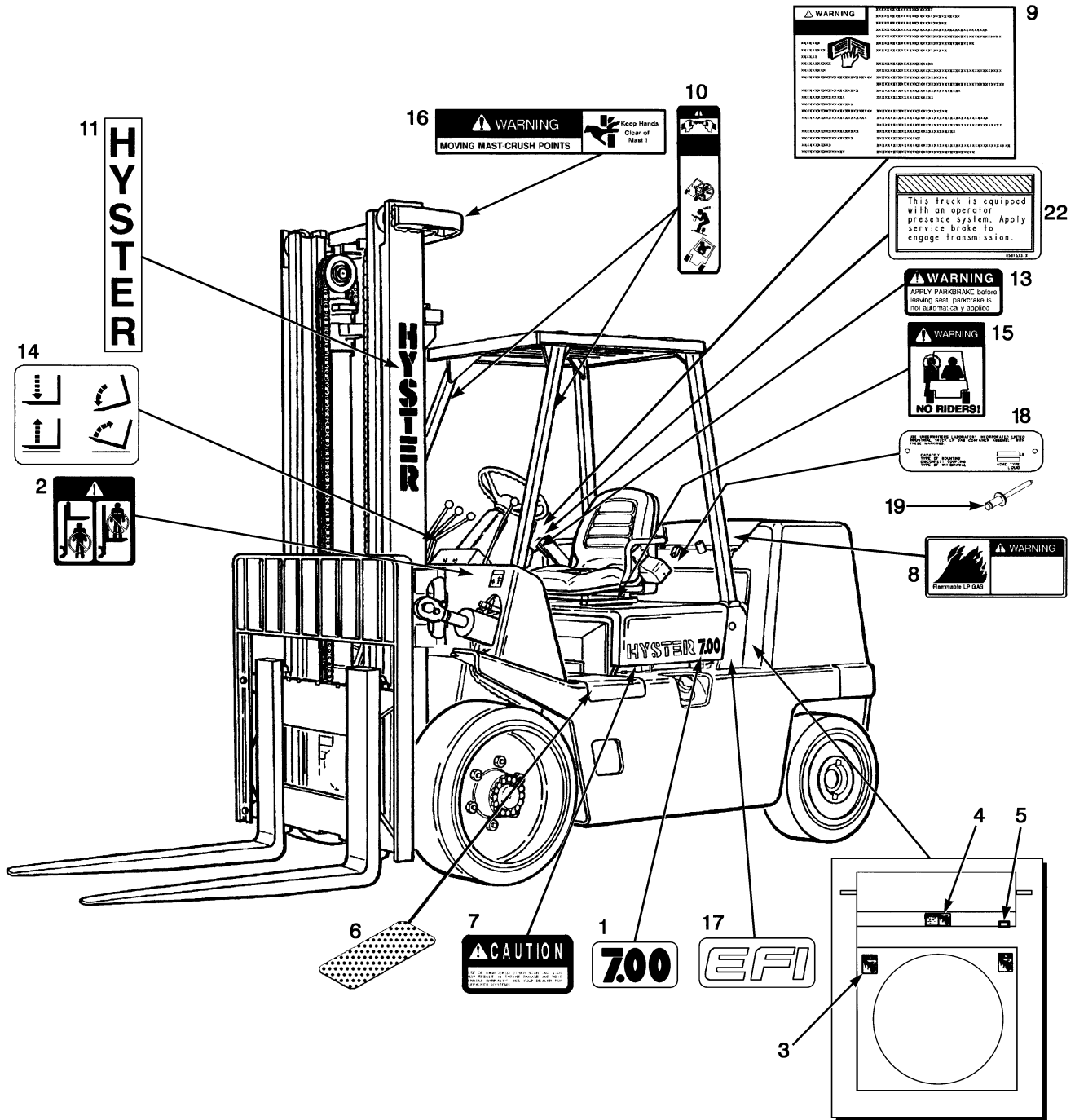


HP120704

GENERAL TRUCK

ITEM	PART NO.	DESCRIPTION	QTY
1	COUNTERWEIGHT (☞ Figure 1-4)	1
2	ENGINE(S) (☞ Figure 2-10, ☞ Figure 2-18)	1
3	FUEL SYSTEM (☞ Figure 3-7, ☞ Figure 3-3)	1
4	ELECTRICAL SYSTEM (☞ Figure 4-2, ☞ Figure 4-4)	1
5	TRANSMISSION (☞ Figure 5-1)	1
6	STEERING SYSTEM (☞ Figure 6-2)	1
7	BRAKE SYSTEM (☞ Figure 7-3)	1
8	HYDRAULIC SYSTEM (☞ Figure 8-1)	1
9	MAST-TWO STAGE LIMITED FREE-LIFT (☞ Figure 9-1)	1
10	MAST-THREE STAGE FULL FREE-LIFT (☞ Figure 10-1)	1
11	OPTIONS (☞ Figure 11-1)	1
12	CARRIAGE (☞ Figure 9-5, ☞ Figure 10-8)	1

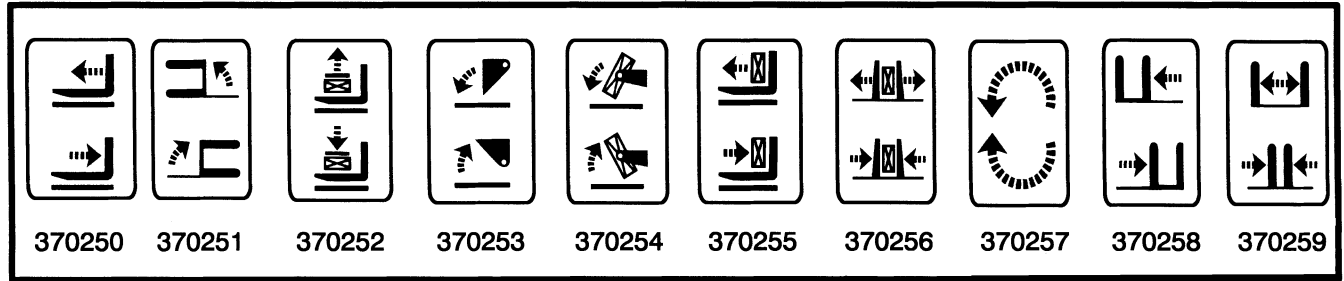
LABELS (Figure 1-2)



HP120724

LABELS

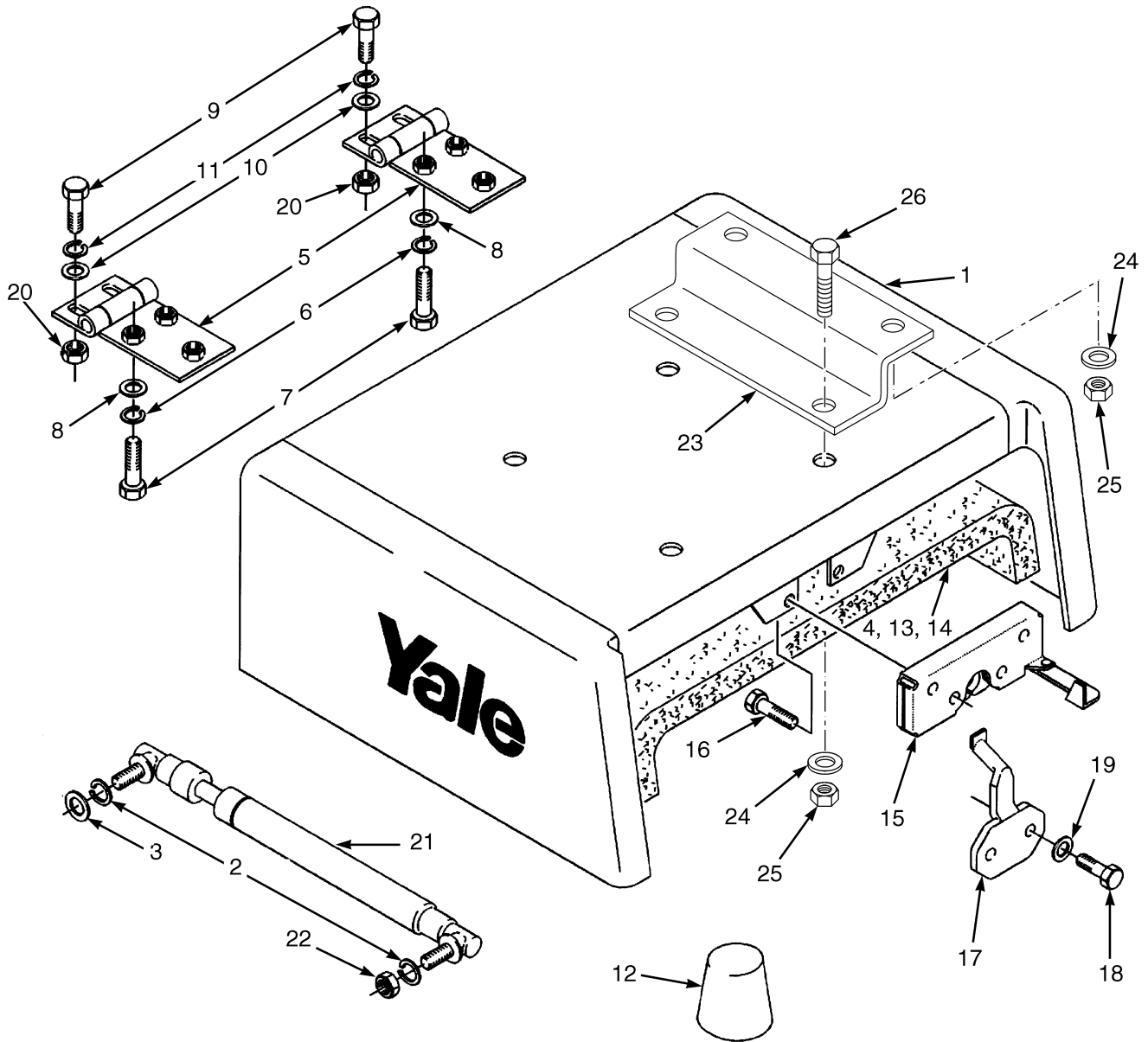
12



HP120049

ITEM	PART NO.	DESCRIPTION	QTY
1	380335	Label (Model 6.00).....	2
1	380336	Label (Model 7.00).....	2
2	1339830	Label (Mast Warning)	2
3	1300094	Label (Fan Warning)	2
4	1345926	Label (Fan Warning)	1
5	1354165	Label (Anti-freeze)	1
6	1308608	Floormat	1
7	2034459	Label (Ether Warning).....	1
8	1316445	Label (Flammable LP Gas).....	1
9	1366725	Label (Operator Warning).....	1
10	1359588	Label (Operator Restraint).....	2
11	1344132	Label (Hyster)	2
11	1345836	Label (Hyster)	2
12	370250	Label (Auxiliary Function - Reach)	1
12	370251	Label (Auxiliary Function - Swing)	1
12	370252	Label (Auxiliary Function - Stabilizer)	1
12	370253	Label (Auxiliary Function - Dump/Scoop)	1
12	370254	Label (Auxiliary Function - Upender)	1
12	370255	Label (Auxiliary Function - Push/Pull).....	1
12	370256	Label (Auxiliary Function - Clamp)	1
12	370257	Label (Auxiliary Function - Rotate)	1
12	370258	Label (Auxiliary Function - Side-Shift)	1
12	370259	Label (Auxiliary Function - Fork Spreader).....	1
13	1357001	Label (Park Brake Warning).....	1
14	369573	Label (Lift/Tilt).....	1
15	1339828	Label (No Riders)	2
16	1343276	Label (Mast Warning)	1
17	1345998	Label (EFI).....	2
18	1501259	Label (LPG Tank).....	1
19	170658	Rivet.....	2
19	340044	Gripnail (Optional)	2
20	2080140	Label Operator Presence System.....	1
	320037	Label (Patent Plate) (Not Illustrated)	1
	170658	Rivet (Not Illustrated)	4

HOOD (Figure 1-3)



HP120892

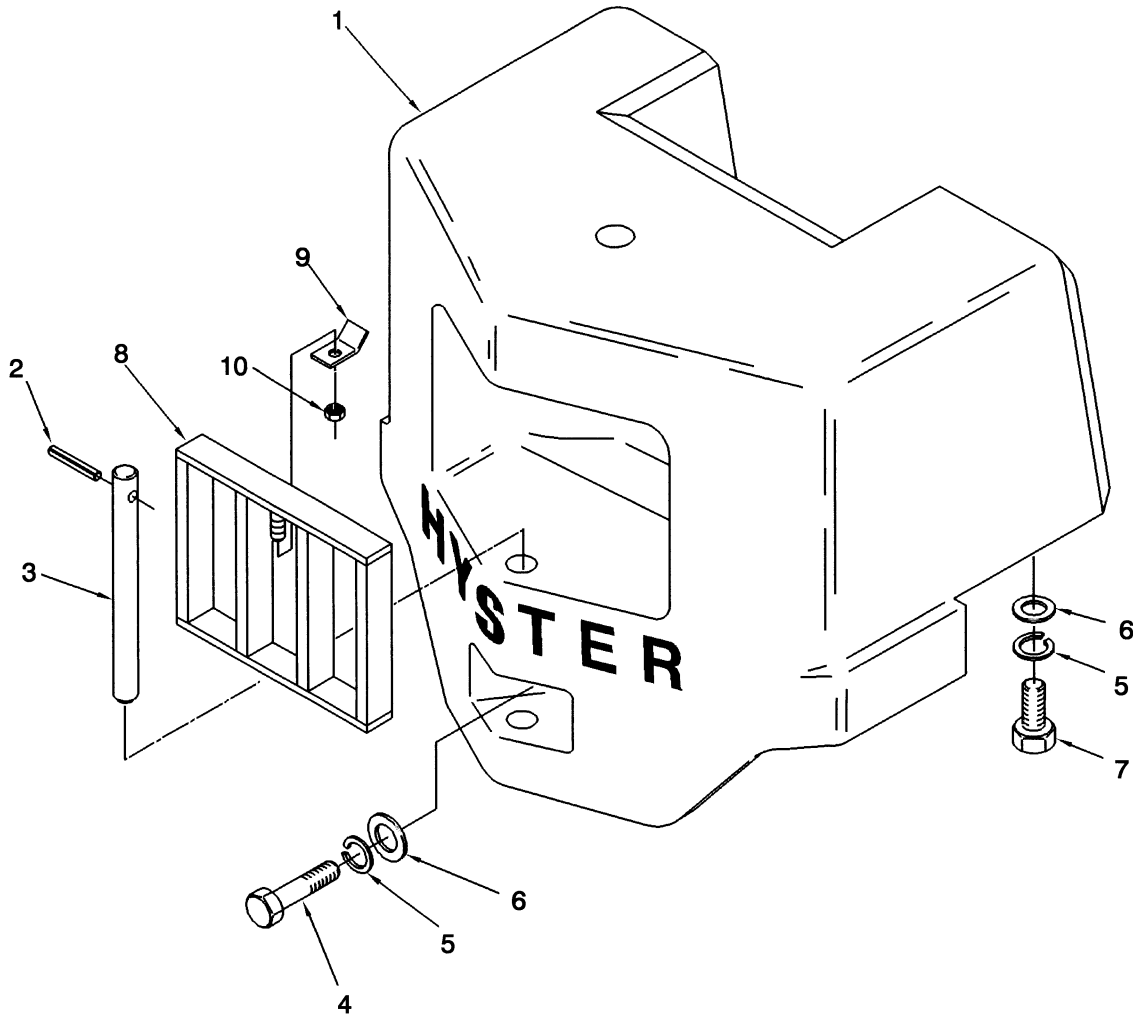
HOOD

ITEM	PART NO.	DESCRIPTION	QTY
1	c 1386222	Hood	1
1	d 1611189	Hood	1
1	c 1562344	Hood (Vented).....	1
1	d 1611190	Hood (Vented).....	1
2	292681	Lockwasher.....	12
3	320157	Washer	5
4	353191	Tape (54.9 m [180 ft.])	AR
5	1331039	Hinge	2
6	292681	Lockwasher.....	6
7	136681	Capscrew.....	10
8	1300117	Washer	6
9	136985	Capscrew.....	4
10	320157	Washer	4
11	292681	Lockwasher.....	4
12	1320610	Bumper	2
13	1456793	Hood Liner	1
14	1304971	Fastener (Not Illustrated)	13
15	364857	Latch	1
16	199563	Capscrew.....	4
17	364861	Plate (Striker).....	1
18	302334	Capscrew.....	2
19	320160	Washer	2
20	239503	Nut	4
21	a 353021	Gas Spring.....	1
22	303117	Nut	1
23	bd 1602917	Bracket.....	1
24	bd 15175	Washer	4
25	bd 145639	Nut	4
26	bd 16836	Capscrew.....	2

FOOTNOTES:

- a** Trucks with full suspension seats use two gas springs and hardware
b With Full Suspension Seat
c ⇒ PENDING PER ECN 74932
d PENDING PER ECN 74932 ⇒

COUNTERWEIGHT (Figure 1-4)



HP120697

COUNTERWEIGHT

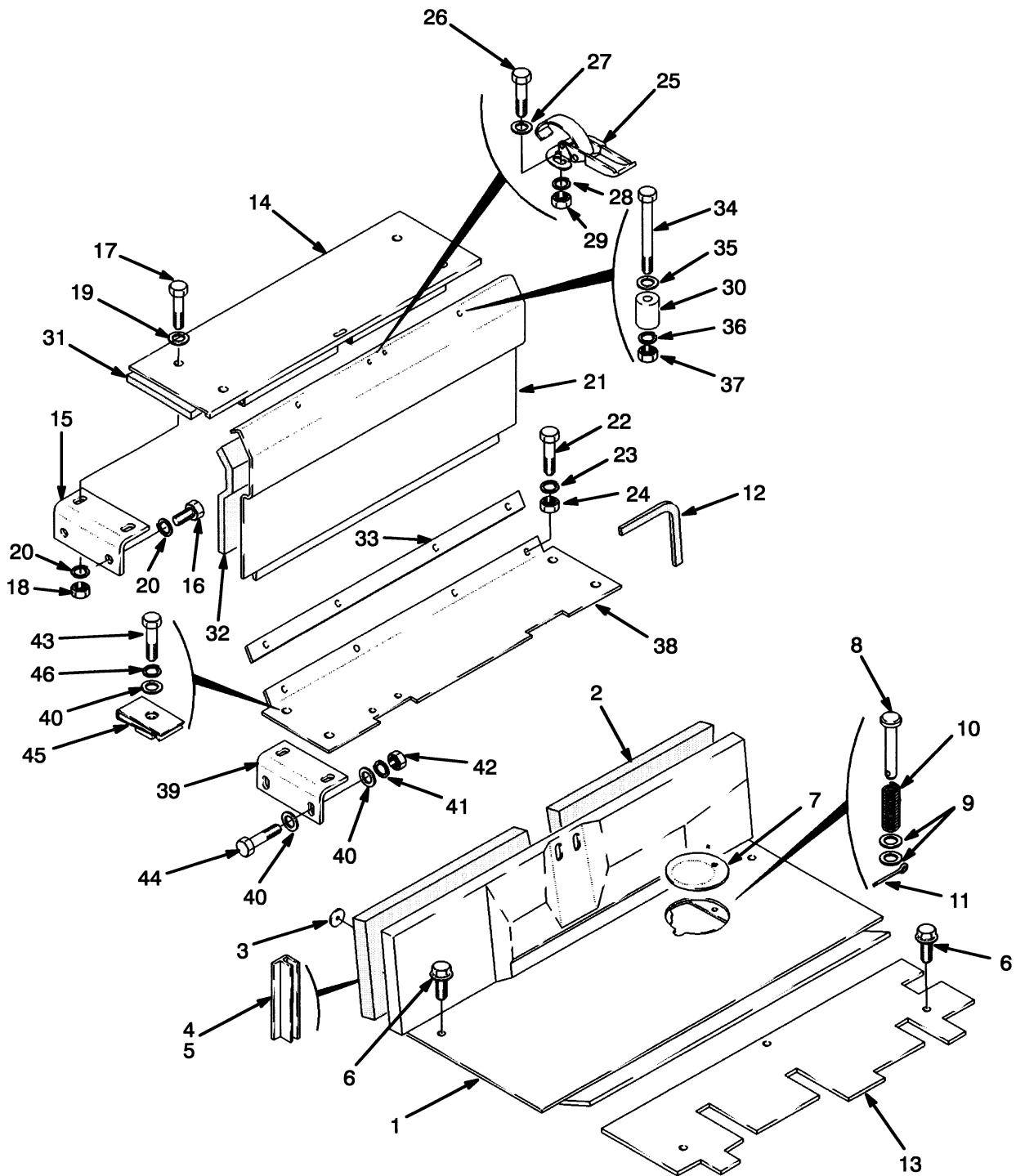
KEY:

A: S6.00XL

B: S7.00XL

ITEM	PART NO.	DESCRIPTION	QTY	
			A	B
1	360138	Counterweight	1	..
1	360139	Counterweight	1
2	302492	Pin	1	1
3	387473	Tow Pin	1	1
4	17395	Capscrew.....	1	1
5	15168	Lockwasher.....	3	3
6	149531	Washer	3	3
7	221100	Capscrew.....	2	2
8	1320109	Grill	1	1
9	270405	Bracket.....	1	1
10	264144	Nut	1	1

COWL AND FLOOR PLATES (Figure 1-5)

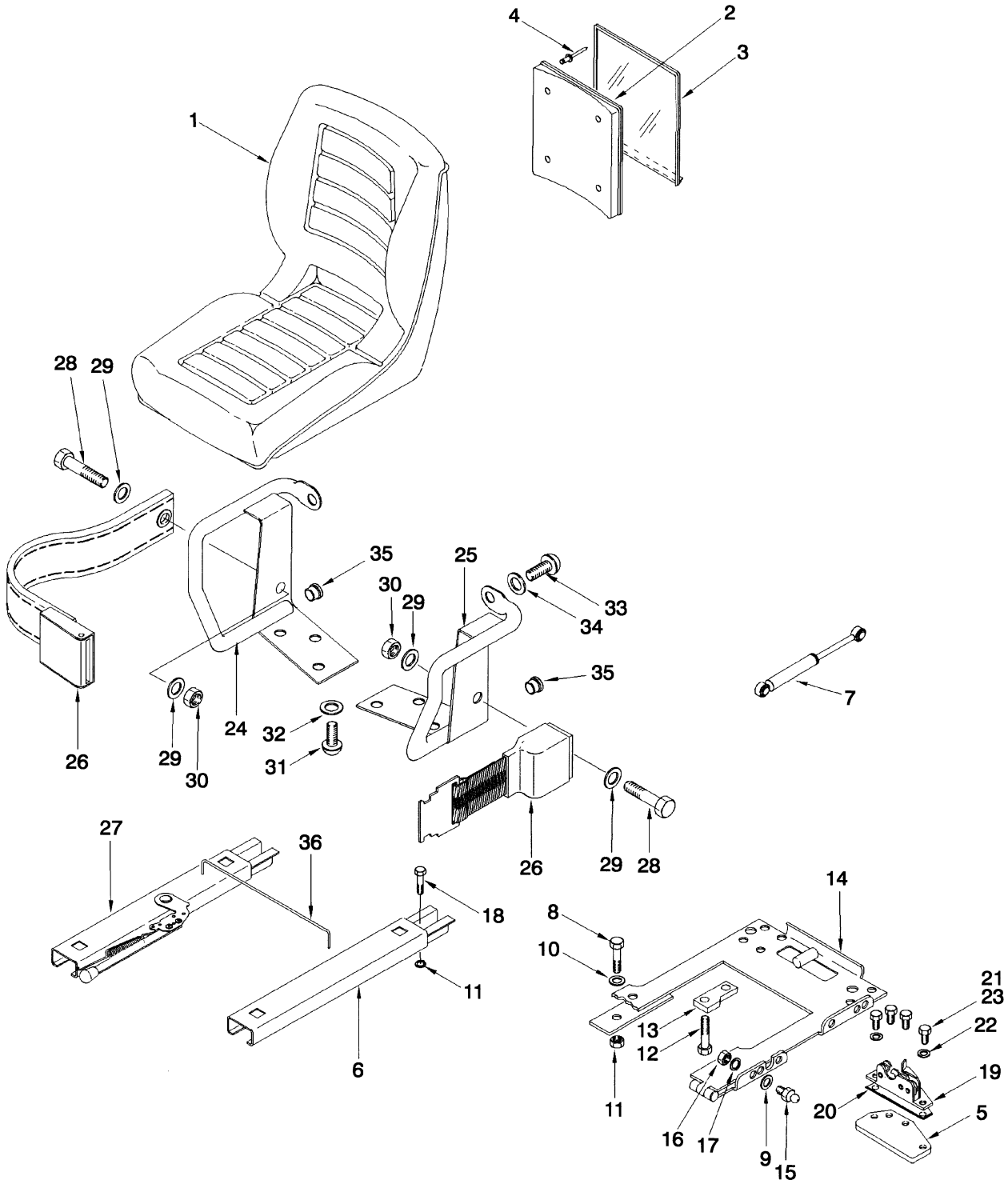


HP120052

COWL AND FLOOR PLATES

ITEM	PART NO.	DESCRIPTION	QTY
1	1303142	Floorplate.....	1
2	364926	Liner.....	1
3	246788	Washer	6
4	353204	Trim	AR
5	288394	Sealant	AR
6	1315402	Screw.....	5
7	313815	Plate	1
7	352939	Cover	1
8	177590	Rod End Pin	1
9	320157	Washer	2
10	137122	Spring	1
11	15212	Cotter Pin.....	1
12	288762	Tape	AR
13	1467733	Floorplate.....	1
14	1303187	Cover	1
15	1308607	Bracket.....	2
16	292514	Capscrew.....	4
17	136985	Capscrew.....	4
18	136692	Nut	4
19	320160	Washer	AR
20	292682	Lockwasher.....	8
21	360174	Door	1
22	296161	Capscrew.....	4
23	292680	Lockwasher.....	4
24	136687	Nut	4
25	1303185	Latch	1
26	296152	Capscrew.....	2
27	320155	Washer	2
28	292679	Lockwasher.....	2
29	292668	Nut	2
30	1303149	Stop	2
31	1303189	Liner (Top)	1
32	1303190	Liner (Door)	1
33	1303184	Spacer	1
34	18126	Capscrew.....	2
35	15127	Washer	2
36	15154	Lockwasher.....	2
37	15054	Nut	2
38	360597	Plate	1
39	360596	Bracket.....	3
40	320160	Washer	12
41	292682	Lockwasher.....	4
42	136692	Nut	4
43	16805	Capscrew.....	4
44	292517	Capscrew.....	4
45	269200	Nut	4
46	15156	Lockwasher.....	4

SEAT (Figure 1-6) STANDARD WITH OPERATOR RESTRAINT LPG (⇒PENDING PER ECN 74932)

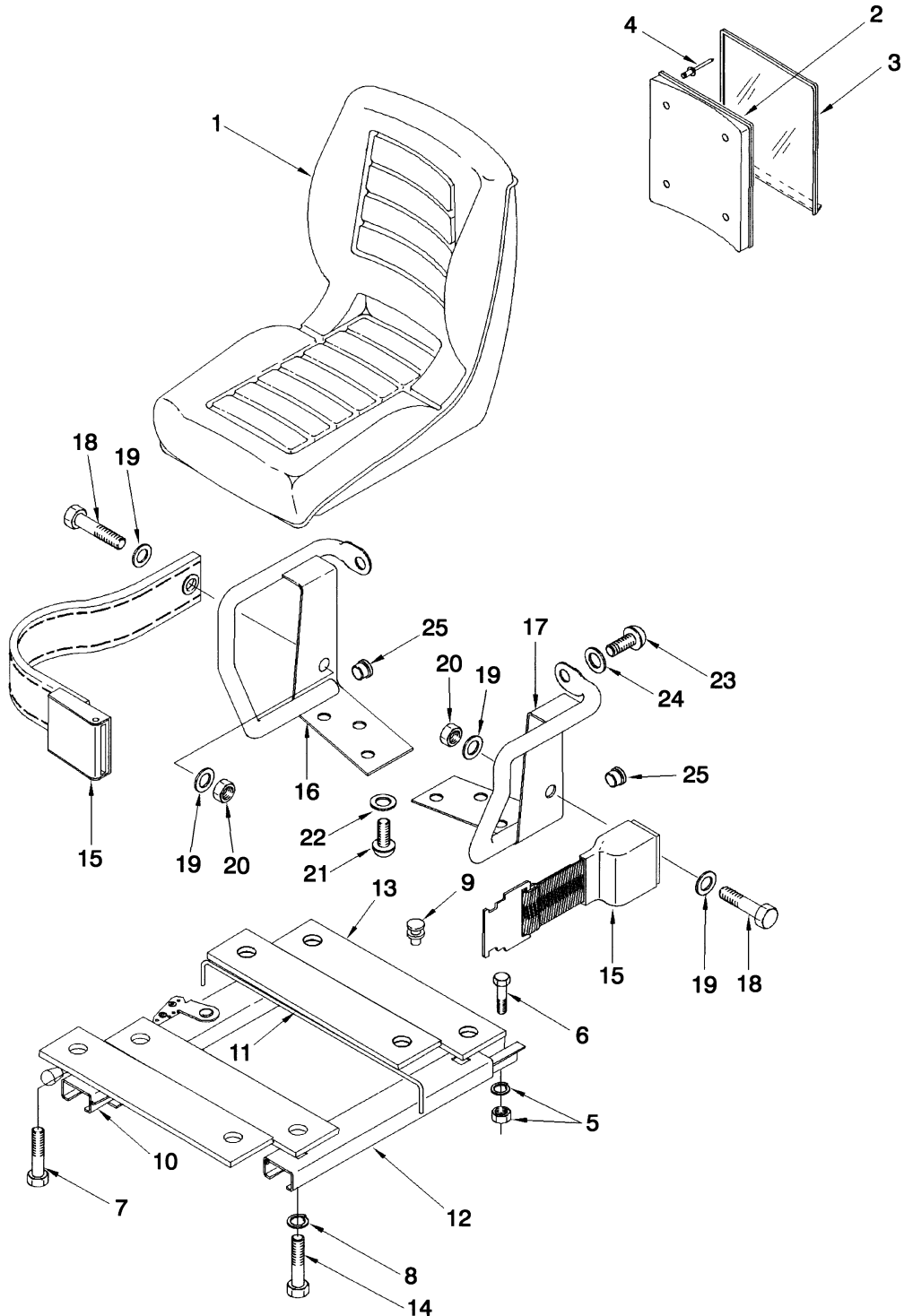


HP120429

SEAT
STANDARD WITH OPERATOR RESTRAINT
LPG
(⇒PENDING PER ECN 74932)

ITEM	PART NO.	DESCRIPTION	QTY
1	364911	Seat	1
2	335988	Base	1
3	335991	Cover	1
4	222029	Rivet.....	4
5	1346321	Plate	1
6	1300108	Seat Rail (LH).....	1
7	1377992	Gas Spring.....	1
8	16374	Capscrew.....	4
9	320157	Washer	2
10	15175	Washer	4
11	145639	Nut	8
12	309637	Screw.....	4
13	306187	Bumper	2
14	1483964	Hinge	1
15	379190	Ball Stud	2
16	329069	Nut	2
17	292681	Lockwasher.....	2
18	16374	Capscrew.....	4
19	1304957	Latch.....	1
20	364940	Shim	3
21	221418	Capscrew.....	4
22	15127	Washer	2
23	251099	Adhesive	AR
24	364807	Hip Restraint (RH)	1
25	364808	Hip Restraint (LH).....	1
26	1374750	Seat Belt	1
27	383116	Seat Rail (RH)	1
28	379199	Capscrew.....	2
29	379697	Washer	4
30	379698	Nut	2
31	18727	Capscrew.....	4
32	18515	Washer	4
33	379197	Capscrew.....	2
34	379198	Washer	2
35	364854	Plug	2
36	1300107	Rod	1

SEAT (Figure 1-7) STANDARD WITH OPERATOR RESTRAINT DIESEL TIER II (⇒PENDING PER ECN 74932)

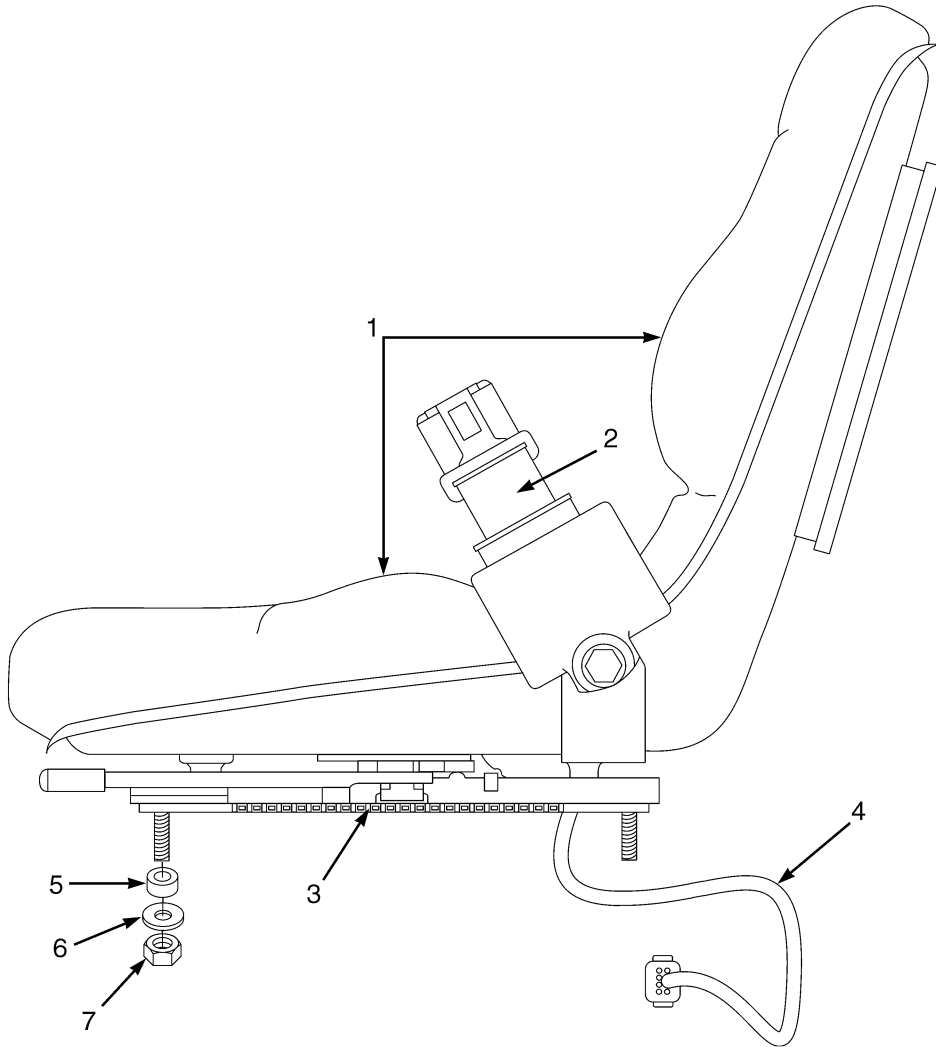


HP120054

SEAT
STANDARD WITH OPERATOR RESTRAINT
DIESEL TIER II
(⇒PENDING PER ECN 74932)

ITEM	PART NO.	DESCRIPTION	QTY
1	364911	Seat	1
2	335988	Base	1
3	335991	Cover	1
4	222029	Rivet.....	4
5	145639	Nut	4
5	15175	Washer	4
6	16374	Capscrew.....	4
7	178598	Capscrew.....	4
8	15155	Lockwasher.....	4
9	1307737	Fastener.....	4
10	1300108	Seat Rail (LH).....	1
11	1300107	Rod	1
12	383116	Seat Rail (RH)	1
13	353731	Plate	2
14	186261	Capscrew.....	4
15	1374750	Seat Belt.....	1
16	364807	Hip Restraint (RH)	1
17	364808	Hip Restraint (LH).....	1
18	379199	Capscrew.....	2
19	379697	Washer	4
20	379698	Nut	2
21	18727	Capscrew.....	4
22	18515	Washer	4
23	379197	Capscrew.....	2
24	379198	Washer	2
25	364854	Plug	2

NON-SUSPENSION SEAT (Figure 1-8) (PENDING PER ECN 74932⇒)



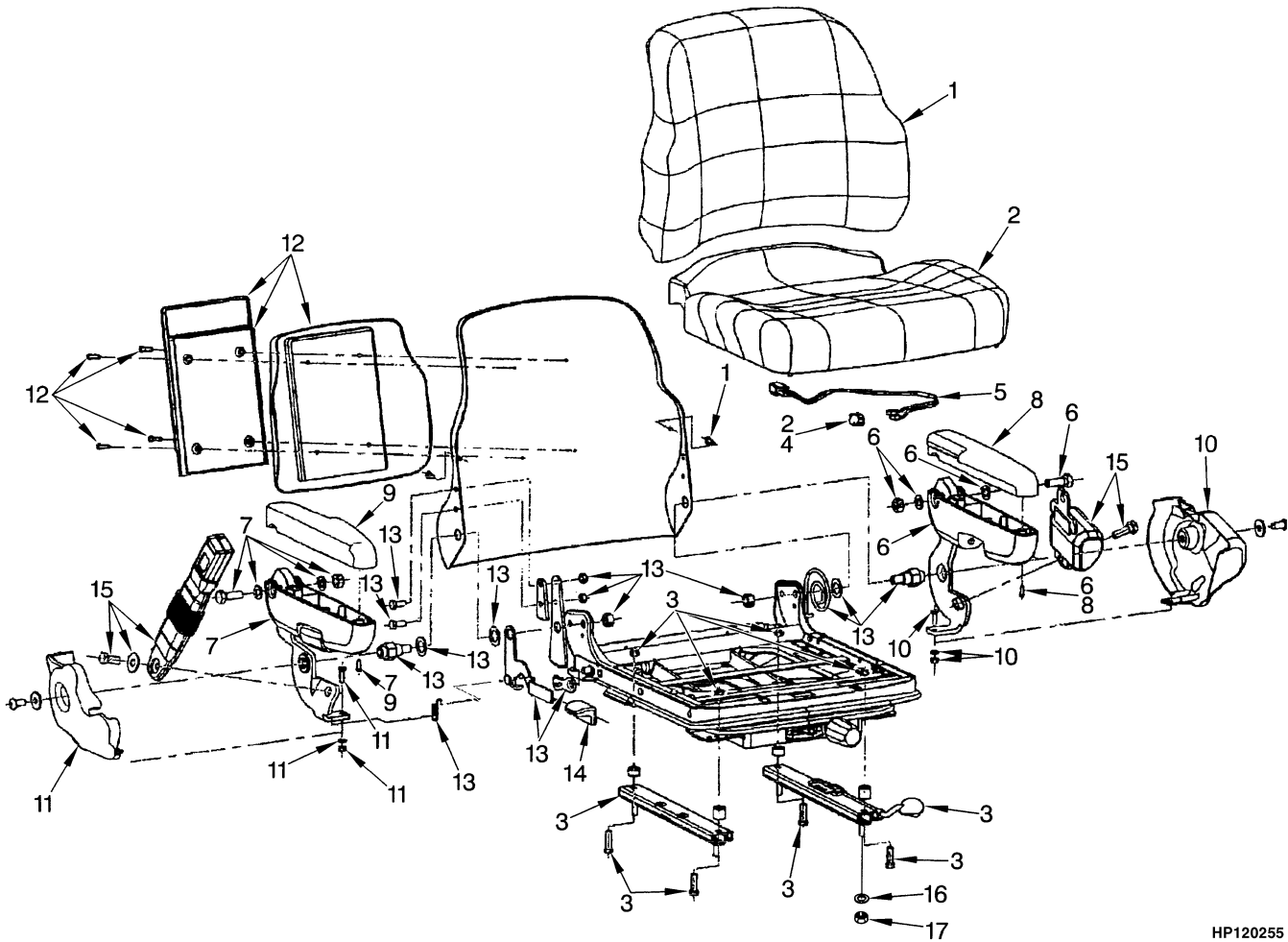
BP120183

**NON-SUSPENSION SEAT
(PENDING PER ECN 74932⇒)**

ITEM	PART NO.	DESCRIPTION	QTY
	1593409	Non-Suspension Seat (Vinyl).....	1
1	1563351	Cushions (Vinyl)	1
	a 1563215	Sensor (Operator Presence)	1
2	1598504	Seat Belt Kit.....	1
3	1459173	Slide Kit	1
4	2075429	Wire Harness	1
5	1484643	Spacer	4
6	15158	Lockwasher.....	4
7	1488609	Special Nut	4

FOOTNOTES:**a** Not Illustrated

FULL SUSPENSION SEAT (Figure 1-9) SHEET 1 OF 2 (⇒PENDING PER ECN 74932)



HP120255

Thank you so much for reading.
Please click the “Buy Now!”
button below to download the
complete manual.



After you pay.

You can download the most
perfect and complete manual in
the world immediately.

Our support email:

ebooklibonline@outlook.com