

PARTS MANUAL

**E3.50XL, E4.00XL,
E4.50XL/XLS, E5.50XL
(D098)**

CUSTOMER EDITION

HYSTER

SECTIONS

1	FRAME
2	ELECTRICAL SYSTEM
3	DRIVE UNIT
4	STEERING SYSTEM
5	BRAKE/ACCELERATOR SYSTEM
6	HYDRAULIC SYSTEM
7	MAST-TWO STAGE LIMITED FREE-LIFT
8	MAST-THREE STAGE FULL FREE-LIFT
9	MAST-TWO STAGE FULL FREE-LIFT
10	OPTIONS
11	NUMERICAL INDEX

TABLE OF CONTENTS

DESCRIPTION	PAGE
A	
ACCELERATOR ASSEMBLY	5-14
ACCUMULATOR	10-2
B	
BATTERY SPACER	1-4
BRAKE ASSEMBLY	5-6
BRAKE LINKAGE	5-4
BRAKE RELAY ASSEMBLY	5-12
C	
CARRIAGE	
THREE STAGE FULL FREE-LIFT	8-24
TWO STAGE FULL FREE-LIFT	9-18
TWO STAGE LIMITED FREE-LIFT	7-14
CONTACTOR	
POWER STEERING ON-DEMAND	2-12
CONTACTOR PANEL	2-10
CONTROL PANEL	
36/48 VOLT	2-6
72/80 VOLT	2-8
CONTROL VALVE	
FOUR FUNCTION	6-20
THREE FUNCTION	6-16
COUNTERWEIGHT	1-20
D	
DC-DC CONVERTER	
36/48 VOLT TO 12 VOLT	
70/80 VOLT TO 12 VOLT	10-10
DRIVE AXLE	3-4
DRIVE LIGHTS.....	10-4
DRIVE TIRE AND WHEEL	3-2
E	
ELECTRICAL SYSTEM.....	2-2
F	
FLOOR PLATES AND COVERS	1-2
FORKS	
CLASS III	1-24
OPTIONAL	1-25
CLASS IV.....	1-28
OPTIONAL	1-29
FREE-LIFT	
THREE STAGE FULL FREE-LIFT	8-12
FREE-LIFT CYLINDER	
TWO STAGE FULL FREE-LIFT	9-14
FREE-LIFT CYLINDERS	
THREE STAGE FULL FREE-LIFT	8-20
FULL SUSPENSION SEAT	

TABLE OF CONTENTS (Continued)

DESCRIPTION	PAGE
F (continued)	
SHEET 1 OF 2.....	1-14
SHEET 2 OF 2.....	1-16
G	
GEAR PUMP.....	4-12
H	
HAND LEVERS.....	6-14
HEADER HOSE	
TWO STAGE FULL FREE-LIFT.....	9-20
MAST HEIGHTS 2790 AND 3050 MM.....	9-22
TWO STAGE LIMITED FREE-LIFT.....	7-16
MAST HEIGHTS 2790MM AND 3050MM.....	7-20
HEADER HOSES	
THREE STAGE FULL FREE-LIFT	
HEIGHTS 4940 AND 5200 MM AND ABOVE.....	8-30
HEIGHTS LESS THAN 4940 AND 5200 MM.....	8-26
HOOD.....	1-6
HYDRAULIC	
SINGLE PUMP AND MOTOR.....	6-2
HYDRAULIC FILTER.....	6-12
HYDRAULIC MOTOR.....	6-10
HYDRAULIC PLUMBING	
CONTROL VALVE.....	6-6
HYDRAULIC PUMP	
29 CC.....	6-8
HYDRAULIC SUPPLY AND RETURN.....	6-4
I	
INNER MAST	
THREE STAGE FULL FREE-LIFT.....	8-6
TWO STAGE LIMITED FREE-LIFT.....	7-4
INNER MAST AND FREE-LIFT	
TWO STAGE FULL FREE-LIFT.....	9-6
INTEGRAL SIDE-SHIFT	
THREE STAGE FULL FREE-LIFT	
E3.50-4.00XL, E4.50XLS.....	10-20
E4.50-5.50XL.....	10-22
TWO STAGE FULL FREE-LIFT	
E3.50XL, E4.00XL, E4.50XLS.....	10-16
E4.50-5.50XL.....	10-18
TWO STAGE LIMITED FREE-LIFT	
E3.50XL, E4.00XL, E4.50XLS.....	10-12
E4.50-E5.50XL.....	10-14
INTEGRAL SIDE-SHIFT CARRIAGE	
THREE STAGE FULL FREE-LIFT	
1067 MM (42 IN.) CLASS III.....	10-36
1219 MM (48 IN.) CLASS III.....	10-38
1219 MM (48 IN.) CLASS IV.....	10-40

TABLE OF CONTENTS (Continued)

DESCRIPTION	PAGE
I (continued)	
TWO STAGE FULL FREE-LIFT	
1067 MM (42 IN.) CLASS III.....	10-30
1219 MM (48 IN.) CLASS III.....	10-32
1219 MM (48 IN.) CLASS IV	10-34
TWO STAGE LIMITED FREE-LIFT	
1067 MM (42 IN.) CLASS III.....	10-24
1219 MM (48 IN.) CLASS III.....	10-26
1219 MM (48 IN.) CLASS IV	10-28
INTERMEDIATE MAST	
THREE STAGE FULL FREE-LIFT	8-4
L	
LABELS.....	1-8
LED BACK-UP AND BRAKE LIGHTS.....	10-6
LINE CONTACTOR	2-14
LOAD BACKREST EXTENSIONS	1-22
M	
MAIN LIFT	
THREE STAGE FULL FREE-LIFT	8-8
TWO STAGE LIMITED FREE-LIFT.....	7-6
MAIN LIFT CYLINDER	
TWO STAGE FULL FREE-LIFT	9-10
TWO STAGE LIMITED FREE-LIFT	
E3.50-4.00XL, E4.50XLS	7-10
E4.50-5.50XL	7-12
MAIN LIFT CYLINDERS	
THREE STAGE FULL FREE-LIFT	8-16
MAST INSTALLATION.....	6-24
MASTER CYLINDER	5-10
MONOTROL PEDAL	5-16
N	
NON SUSPENSION SEAT	1-12
O	
OUTER MAST	
THREE STAGE FULL FREE-LIFT	8-2
TWO STAGE LIMITED FREE-LIFT.....	7-2
OUTER MAST AND MAIN LIFT	
TWO STAGE FULL FREE-LIFT	9-2
OVERHEAD GUARD	
WITH CURVED LEG.....	1-18
WITH STRAIGHT LEG	1-26

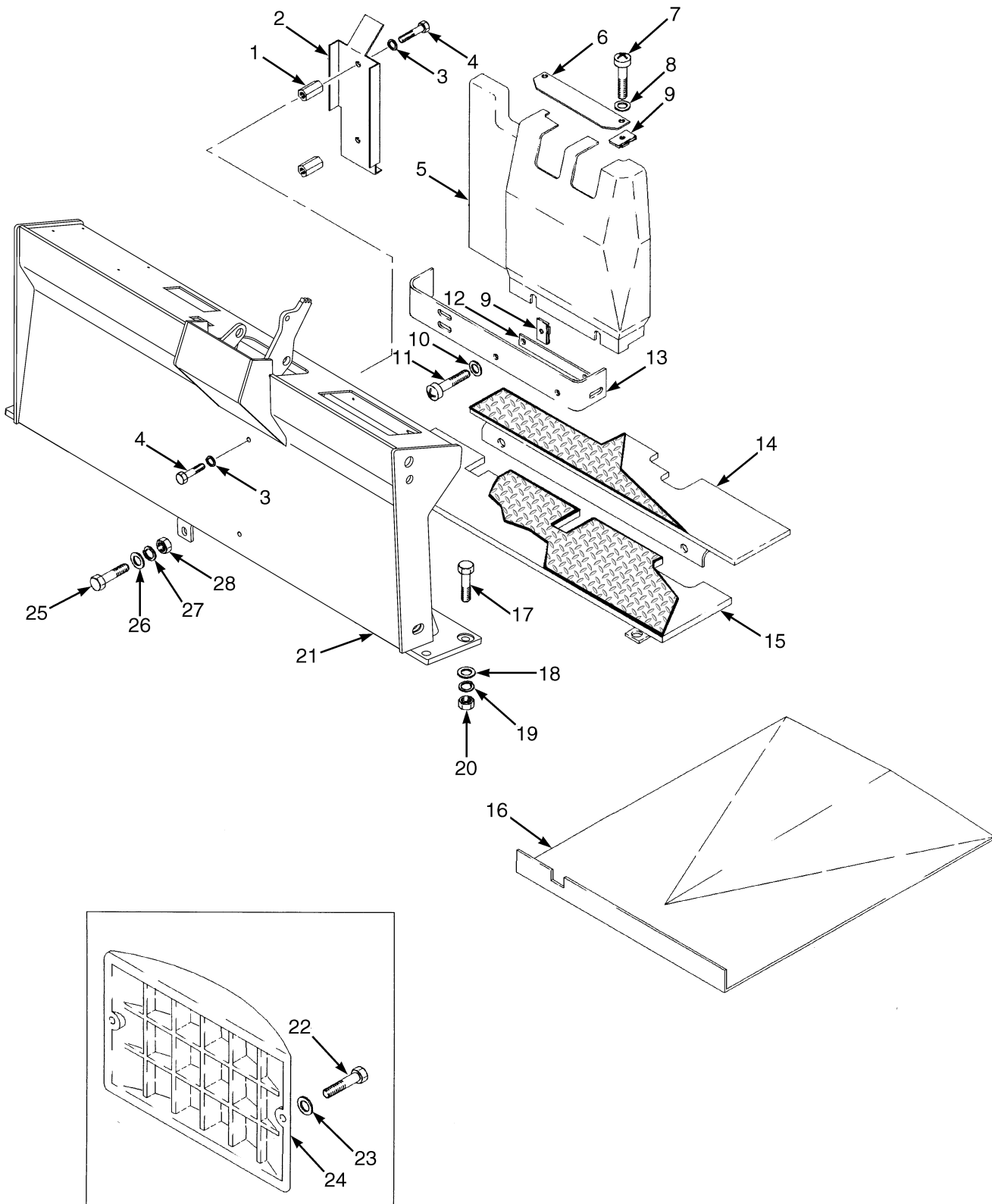
TABLE OF CONTENTS (Continued)

DESCRIPTION	PAGE
P	
PARK BRAKE LEVER ACTUATED	5-2
S	
SEMI SUSPENSION SEAT WITH ARM REST	1-10
SHIFT LEVER	4-16
STEER AXLE ASSEMBLY	4-2
STEER TIRE AND WHEEL	4-8
STEERING COLUMN.....	4-14
STEERING CYLINDER.....	4-6
STEERING MOTOR AND PUMP	4-10
STEERING PUMP	4-18
STROBE LIGHT	10-8
T	
TILT CYLINDER	6-26
TRACTION MOTOR	3-12
TRANSMISSION ASSEMBLY	3-8
W	
WIRE HARNESS	
BRAKE SWITCH.....	2-30
DASH DISPLAY	2-5
LIGHTS	2-28
MAIN CONTROL	
SHEET 1 OF 2	
S/N D098N01717C⇒	2-20
⇒S/N D098N01717C	2-16
SHEET 2 OF 2	
⇒S/N D098N01717C	2-18
S/N D098N01718C⇒	2-22
WIRE HARNESS (MAIN CONTROL)	
80 VOLT	
SHEET 1 OF 2	2-24
SHEET 2 OF 2	2-26

SECTION 1
FRAME

DESCRIPTION	PAGE
BATTERY SPACER	1-4
COUNTERWEIGHT	1-20
FLOOR PLATES AND COVERS	1-2
FORKS	
CLASS III	1-24
OPTIONAL	1-25
CLASS IV	1-28
OPTIONAL	1-29
FULL SUSPENSION SEAT	
SHEET 1 OF 2	1-14
SHEET 2 OF 2	1-16
HOOD	1-6
LABELS	1-8
LOAD BACKREST EXTENSIONS	1-22
NON SUSPENSION SEAT	1-12
OVERHEAD GUARD	
WITH CURVED LEG	1-18
WITH STRAIGHT LEG	1-26
SEMI SUSPENSION SEAT	
WITH ARM REST	1-10

FLOOR PLATES AND COVERS (Figure 1-1)



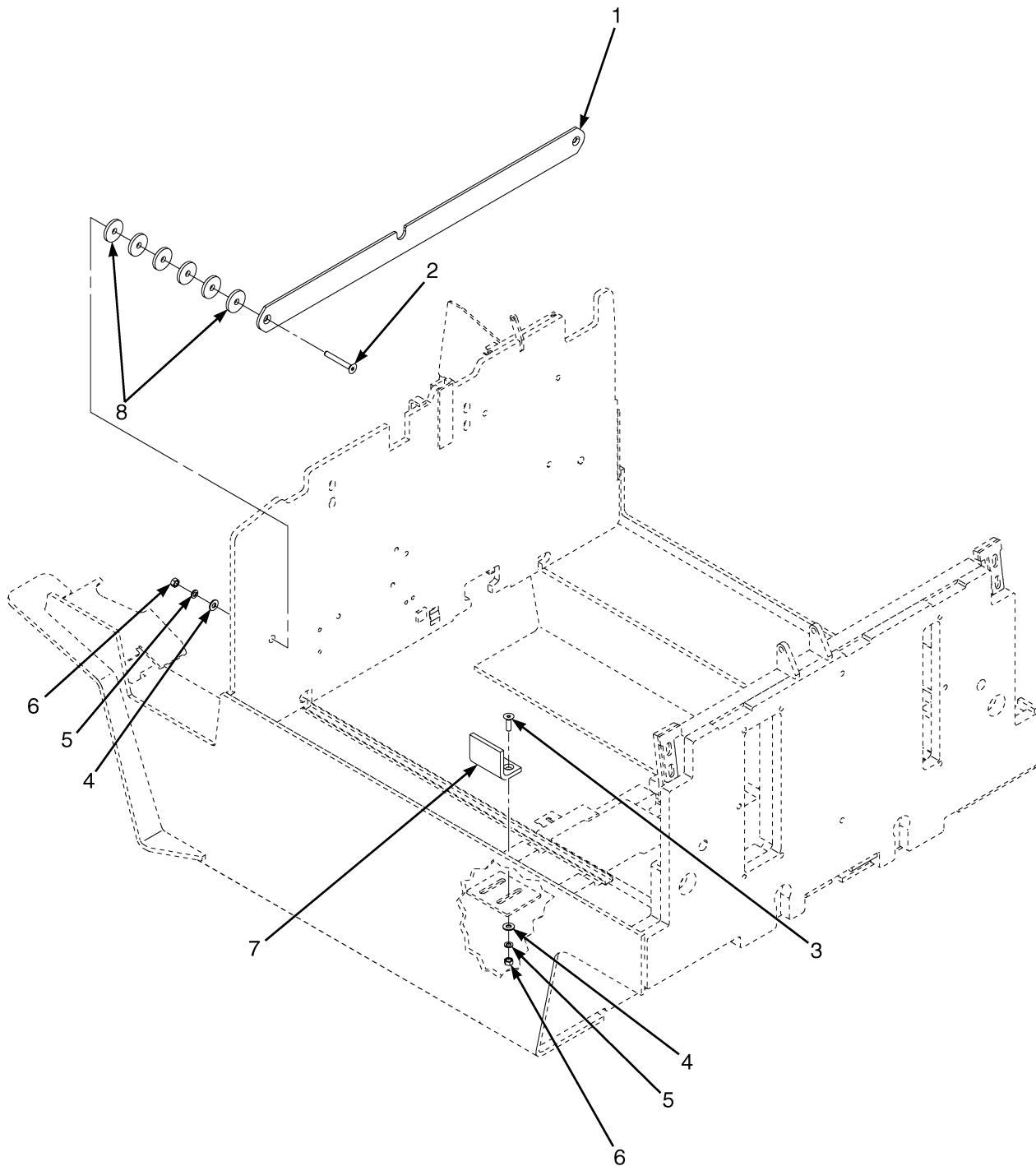
BP120094

FLOOR PLATES AND COVERS**KEY:****A: E3.50XL, E4.00XL, E4.50XLS****B: E4.50XL, E5.50XL**

ITEM	PART NO.	DESCRIPTION	QTY	
			A	B
1	1328480	Standoff	2	2
2	1569517	Cover	1	1
3	15154	Lockwasher.....	4	4
4	18718	Capscrew.....	4	4
5	375161	Cover (Two,Three, and Four Function Valves).....	1	1
5	375162	Cover (Five Function Valve).....	1	1
6	375160	Plate	1	1
7	302049	Screw.....	6	6
8	320156	Washer	6	6
9	1354323	Nut (Foldover).....	6	6
10	320156	Washer	6	6
11	302049	Screw.....	6	6
12	325096	Plate	1	1
13	375159	Plate	1	1
14	b 1462416	Floorplate (Rear)	1	1
15	b 1462420	Floorplate (Front).....	1	1
16	1462422	Cover	1	..
16	1462423	Cover	1
17	221570	Capscrew.....	8	8
18	221771	Washer	8	8
19	15158	Lockwasher.....	8	8
20	221712	Nut	8	8
21	1569515	Cowl.....	1	1
22	16828	Capscrew.....	2	2
23	221767	Washer	2	2
24	375184	Cover	1	1
25	136985	Capscrew.....	1	1
26	320159	Washer	2	2
27	292682	Lockwasher.....	1	1
28	136692	Nut	1	1
	a 374046	Plug	1	1

FOOTNOTES:**a** Not Illustrated**b** Textured

BATTERY SPACER (Figure 1-2)

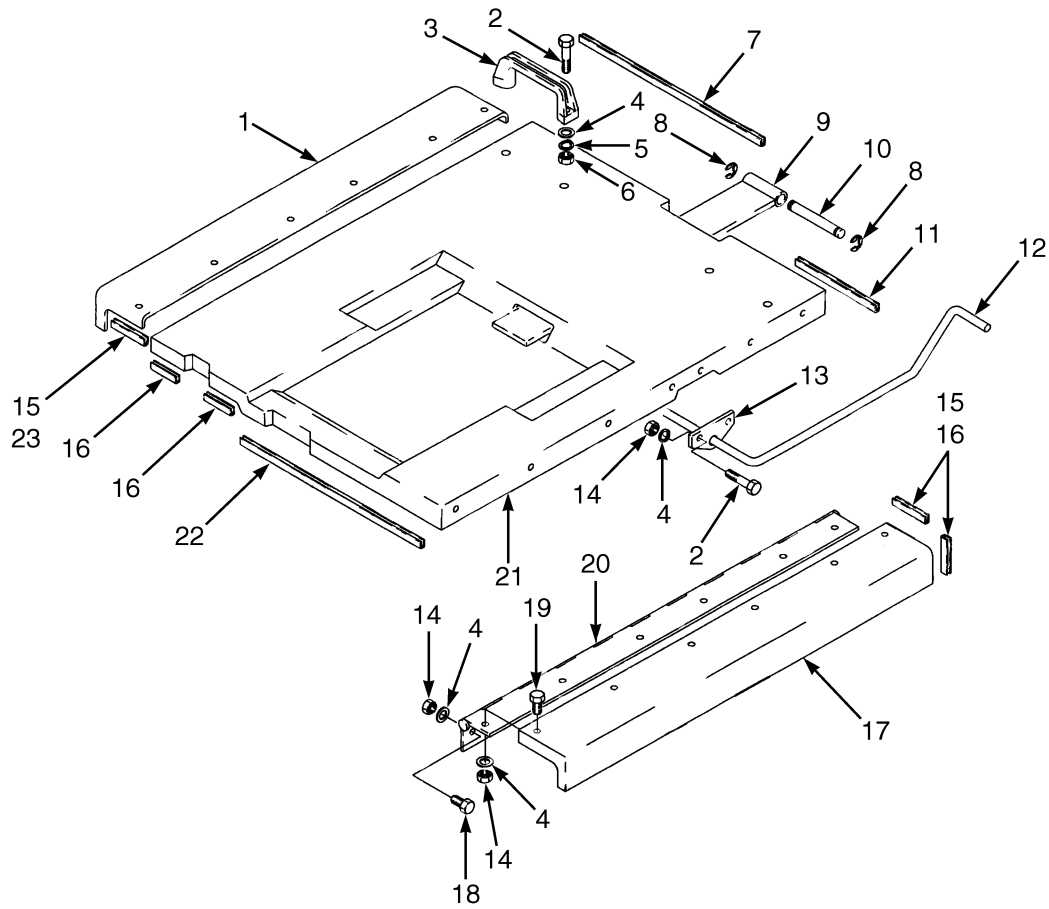


HP120828

BATTERY SPACER

ITEM	PART NO.	DESCRIPTION	QTY
1	375249	Plate	1
2	296248	Capscrew.....	2
3	296241	Capscrew.....	4
4	296421	Washer	6
5	292682	Lockwasher.....	6
6	136692	Nut	6
7	375226	Spacer	2
8	361973	Spacer	12

HOOD (Figure 1-3)

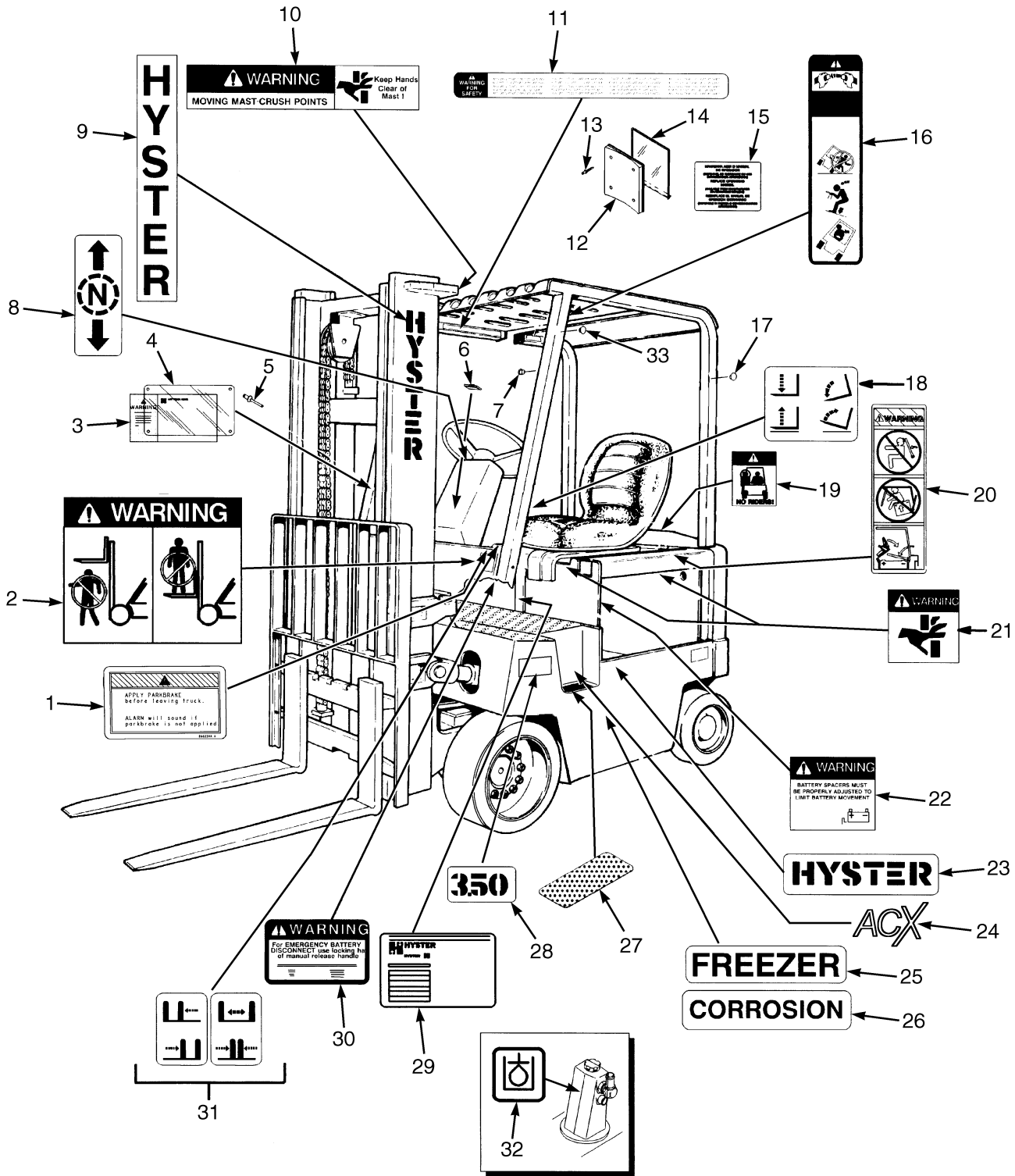


HP120820

HOOD**KEY:****A: E3.50XL, E4.00XL, E4.50XLS****B: E4.50XL, E5.50XL**

ITEM	PART NO.	DESCRIPTION	QTY	
			A	B
1	1462078	Hood (RH)	1	..
1	1462079	Hood (RH)	1
2	287816	Capscrew.....	8	8
3	362030	Handle	2	2
4	320156	Washer	30	30
5	292680	Lockwasher.....	4	4
6	136687	Nut	4	4
7	375296	Trim	1	1
8	182118	Retaining Ring	2	2
9	1302506	Plate	1	..
9	1302507	Plate	1
10	1302519	Pin	1	1
11	375295	Trim.....	1	1
12	1302505	Hinge	1	1
13	388768	Bracket.....	2	2
14	313805	Nut	26	26
15	362043	Adhesive	AR	AR
16	325980	Trim	4	4
17	1462074	Hood (LH).....	1	..
17	1462075	Hood (LH).....	..	1
18	292500	Capscrew.....	10	10
19	296215	Capscrew.....	12	12
20	1462088	Hinge	2	..
20	1462089	Hinge	2
21	1461930	Hood	1	..
21	1461931	Hood	1
22	362031	Trim	1	1
23	388752	Trim	2	2

LABELS (Figure 1-4)

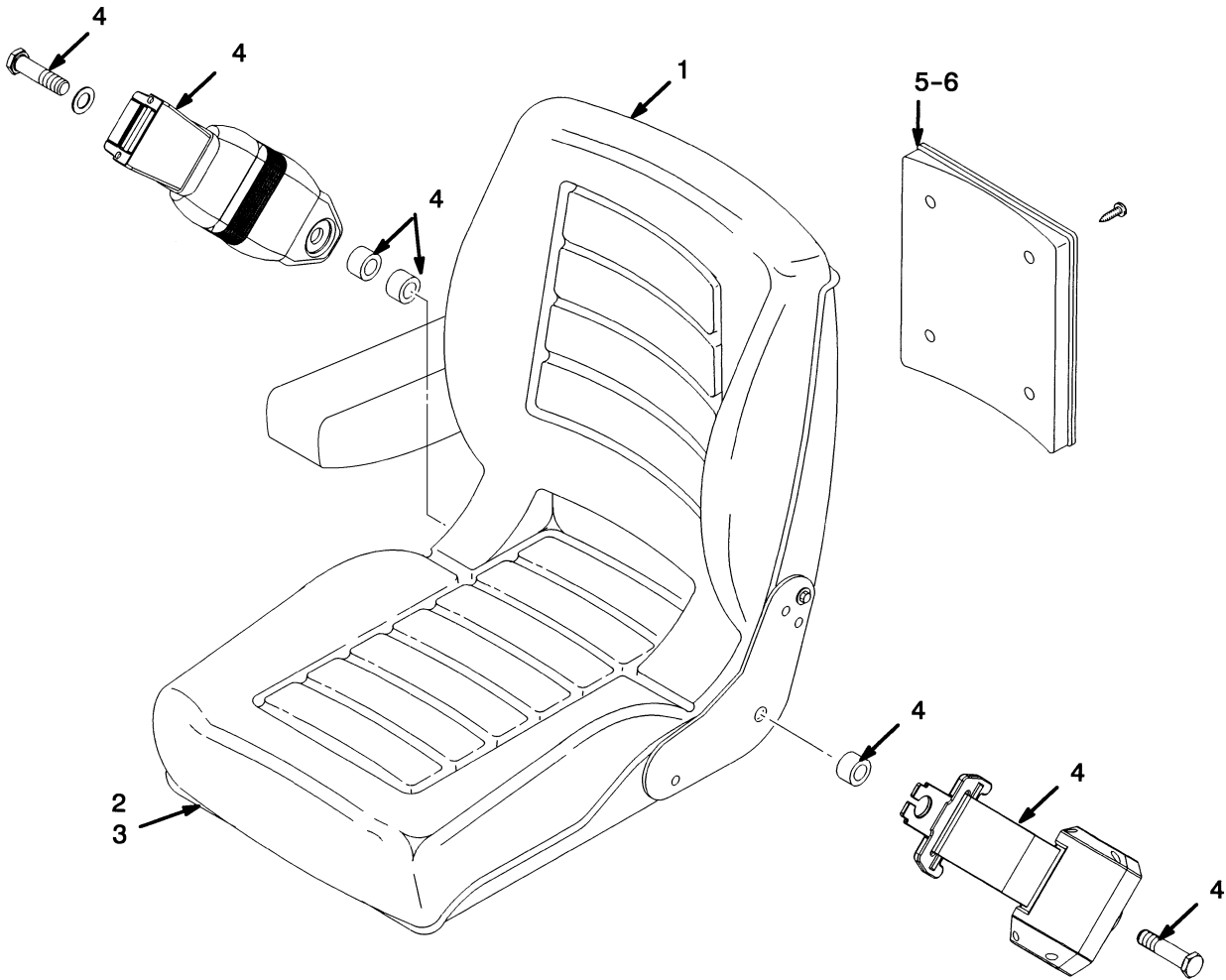


HP120838

LABELS

ITEM	PART NO.	DESCRIPTION	QTY
1	2310911	Label (Parking Brake Warning) (Without Seat Brake)	1
2	1339830	Label (Mast Warning)	2
3	1471618	Label (Nameplate) (EEC)	1
3	1495293	Nameplate (Non-EEC).....	1
4	389687	Nameplate Cover.....	1
5	1380584	Rivet.....	4
6	374046	Plug (Panel)	1
7	1363917	Plug	2
8	309684	Label (Forward/Reverse)	1
9	1344132	Label (Hyster) (Vertical).....	2
9	1345836	Label (Hyster) (Vertical) (With Hose Reel or Mast Headlights).....	2
10	1343276	Label (Mast Warning)	1
11	1373909	Label (Operator Warning) (With Operator Restraint).....	1
12	335988	Base	1
13	222030	Rivet.....	4
14	335991	Cover	1
15	1328205	Label (Operator Manual).....	1
16	1359588	Label (Operator Restraint)	2
17	1363916	Plug (Without Headlight).....	10
18	369573	Label (Lift/Tilt).....	1
19	1339828	Label (No Riders)	2
20	1343289	Label (Battery Restraint).....	1
21	1339832	Label (Pinch Point)	2
22	1342699	Label (Battery Spacer).....	1
23	1350577	Label (Hyster) (Horizontal)	2
24	1539387	Label (ACX)	1
25	1467511	Label (Freezer)	2
26	1467512	Label (Corrosion).....	2
27	1462415	Pad	1
28	1302483	Label (Model 5.50).....	2
28	369873	Label (Model 3.50).....	2
28	369874	Label (Model 4.00).....	2
28	370303	Label (Model 4.50).....	2
29	320037	Label (Patent Plate)	1
30	1342698	Label (Battery Disconnect)	1
31	370258	Label (Auxiliary Function - Side-Shift)	AR
31	370259	Label (Auxiliary Function - Fork Spreader)	AR
32	1385099	Label (Hydraulic Oil Fill) (EEC).....	1
35	1363918	Plug (Without Headlight).....	2

SEMI SUSPENSION SEAT (Figure 1-5) WITH ARM REST



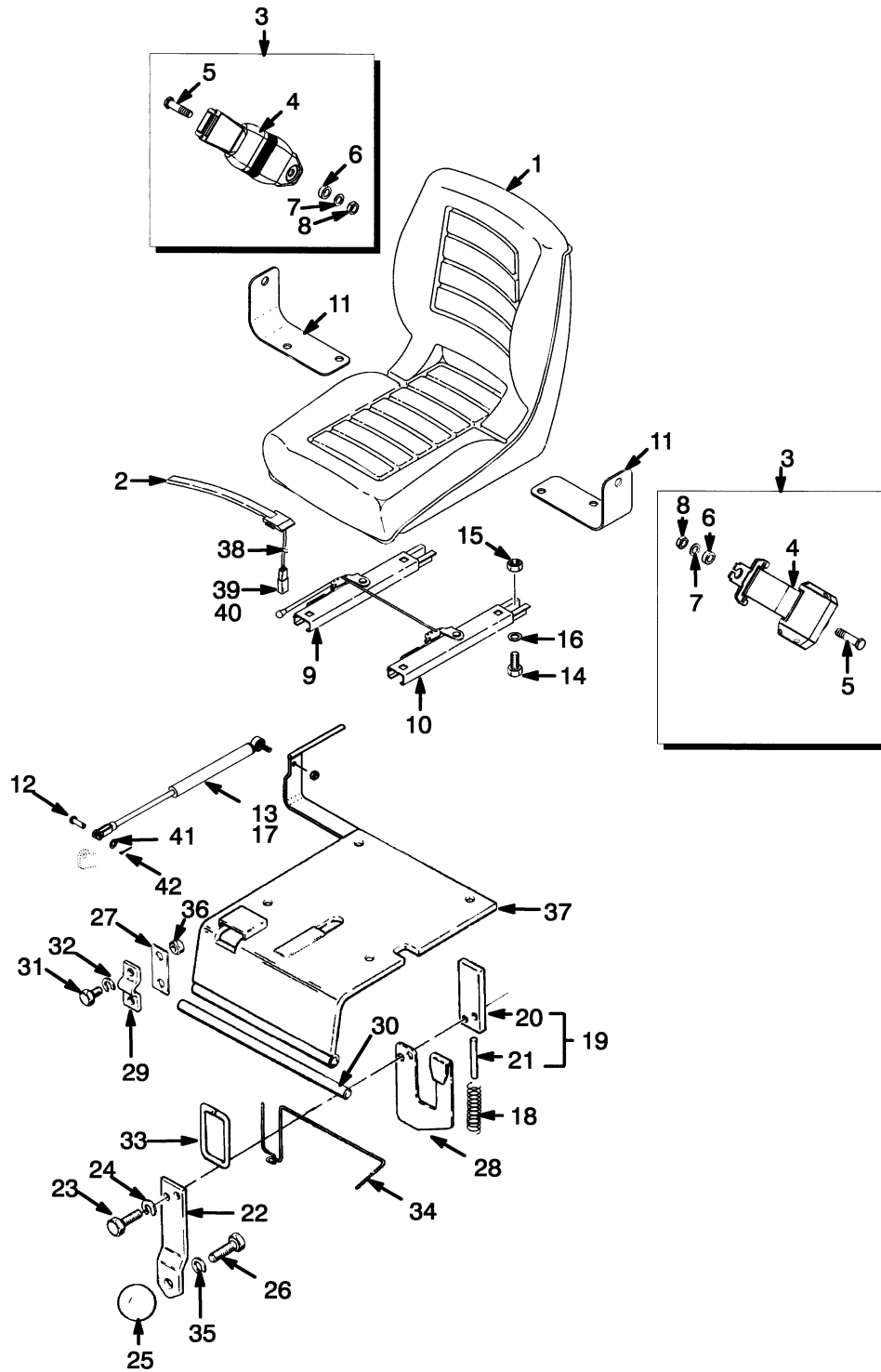
BP120031

**SEMI SUSPENSION SEAT
WITH ARM REST**

ITEM	PART NO.	DESCRIPTION	QTY
	2051298	Semi-Suspension Seat	1
1	1480403	Back Cushion	1
2	1480404	Seat Cushion (With Switch).....	1
3	a 1480405	Slider Kit	1
4	1461081	Seat Belt Kit.....	1
5	335989	Tube.....	1
6	335991	Cover	1
7	1492278	Armrest Kit	1
	a 893818	Ground Wire	1

FOOTNOTES:**a** Not Illustrated

NON SUSPENSION SEAT (Figure 1-6)

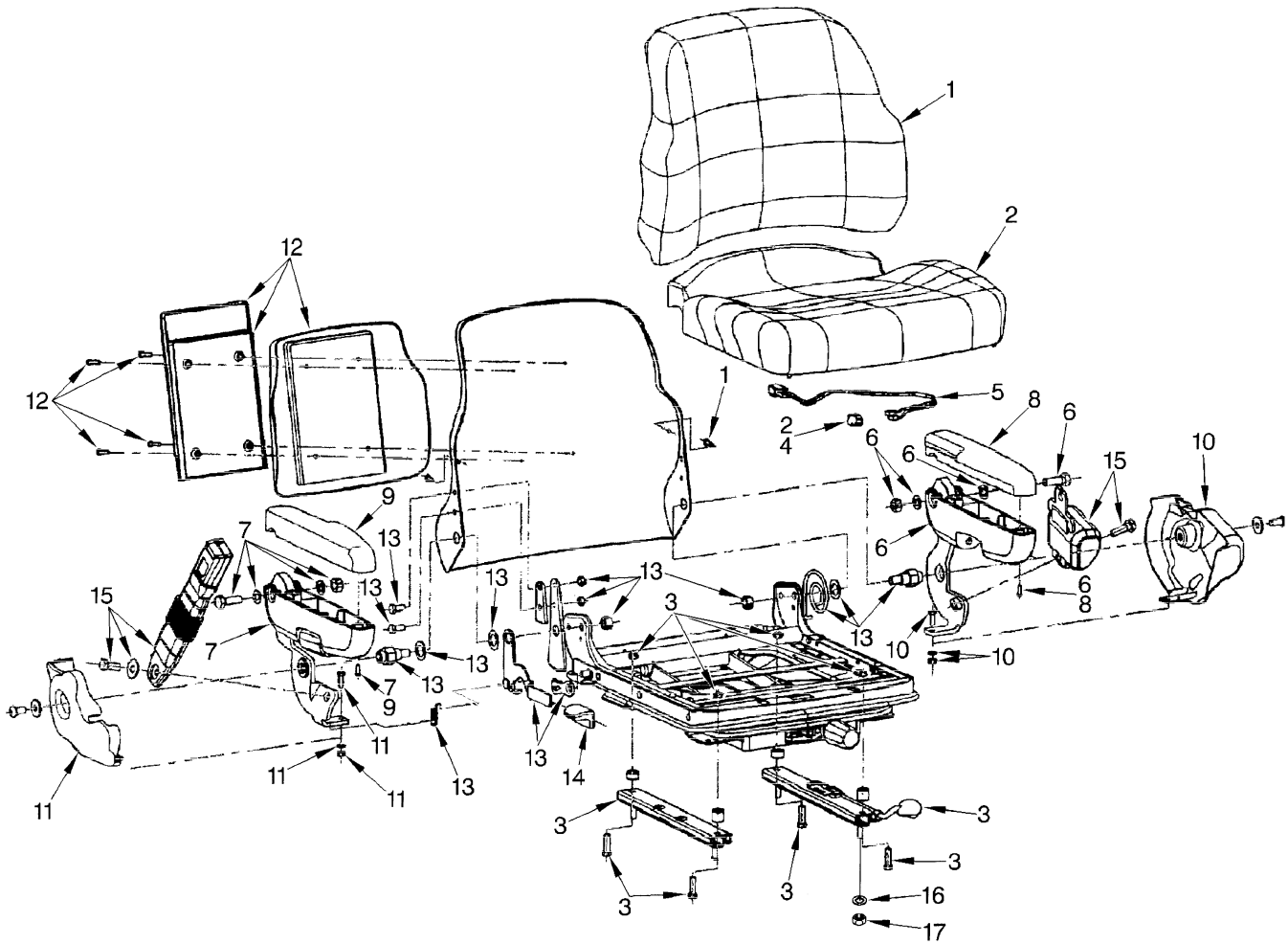


HP120187

NON SUSPENSION SEAT

ITEM	PART NO.	DESCRIPTION	QTY
	1460231	Non-Suspension Seat.....	1
1	364911	Seat.....	1
2	2037311	Switch Assembly	1
3	1461081	Seat Belt Kit.....	1
4	Seat Belt	1
5	Screw	2
6	Washer.....	2
7	Washer.....	2
8	Nut	2
9	1470176	Seat Rail (RH)	1
10	1470177	Seat Rail (LH).....	1
11	1470175	Bracket	1
12	139	Rod End Pin	1
13	251099	Adhesive	AR
14	18897	Capscrew.....	4
15	222665	Nut	4
16	18515	Washer	4
17	865371	Gas Spring.....	1
18	359849	Spring	1
19	1461896	Latch	1
20	1461888	Plate	1
21	302428	Pin	1
22	325592	Plate	1
23	287817	Capscrew.....	2
24	292680	Lockwasher.....	2
25	190481	Knob	1
26	16372	Capscrew.....	1
27	325616	Spacer	AR
28	362004	Spring Latch	1
29	355374	Clamp	2
30	360730	Bar	1
31	287860	Capscrew.....	4
32	292682	Lockwasher.....	4
33	362005	Rod (Formed)	1
34	355336	Spring	1
35	15156	Lockwasher.....	1
36	136692	Nut	4
37	1528835	Plate	1
38	2076863	Wire Harness.....	1
39	1330409	Connector.....	1
40	1330414	Secondary Lock.....	1
40	1330434	Terminal.....	2
40	1330437	Terminal (Pin)	2
41	18515	Washer	1
42	15212	Cotter Pin.....	1
	1461081	Seat Belt Kit (Includes Items 4-8)	1

FULL SUSPENSION SEAT (Figure 1-7) SHEET 1 OF 2

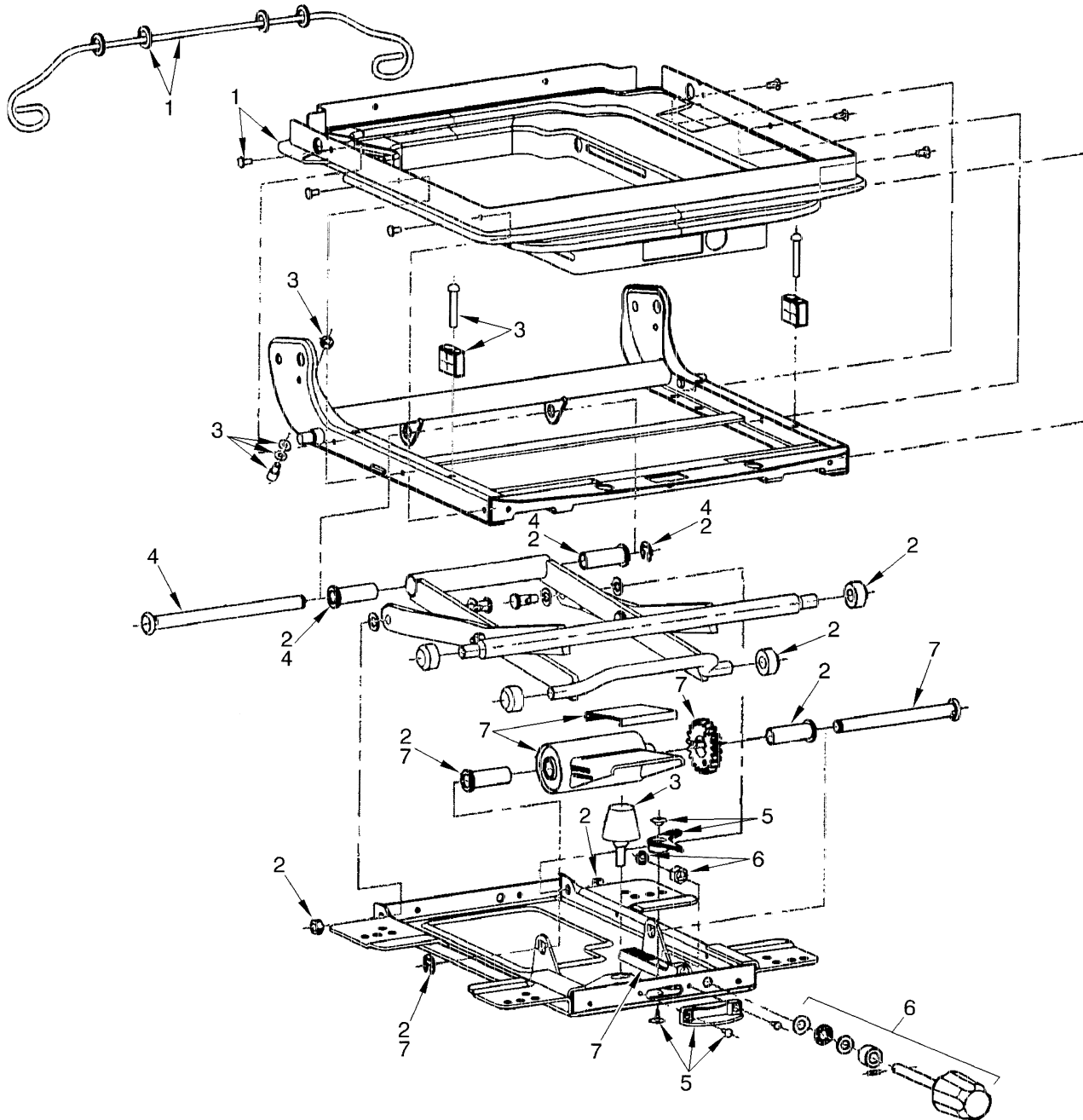


YP260317

**FULL SUSPENSION SEAT
SHEET 1 OF 2**

ITEM	PART NO.	DESCRIPTION	QTY
	1466006	Full Suspension Seat.....	1
1	1467533	Back Cushion (Vinyl).....	1
2	1494076	Seat Cushion (Vinyl).....	1
3	1467513	Slider Kit.....	1
4	1467514	Switch (Seat).....	1
5	1467515	Wire Harness.....	1
6	1467516	Armrest (LH) (LH).....	1
7	1467517	Armrest (RH) (RH).....	1
8	1467518	Cap (LH).....	1
9	1467519	Cap (RH).....	1
10	1467520	Cover (LH).....	1
11	1467521	Cover (RH).....	1
12	1467522	Holder Kit.....	1
13	1467530	Recliner Kit.....	1
14	1467531	Recliner Knob.....	1
15	1467532	Seat Belt Kit.....	1
16	15175	Washer.....	4
17	145639	Nut.....	4

FULL SUSPENSION SEAT (Figure 1-8) SHEET 2 OF 2

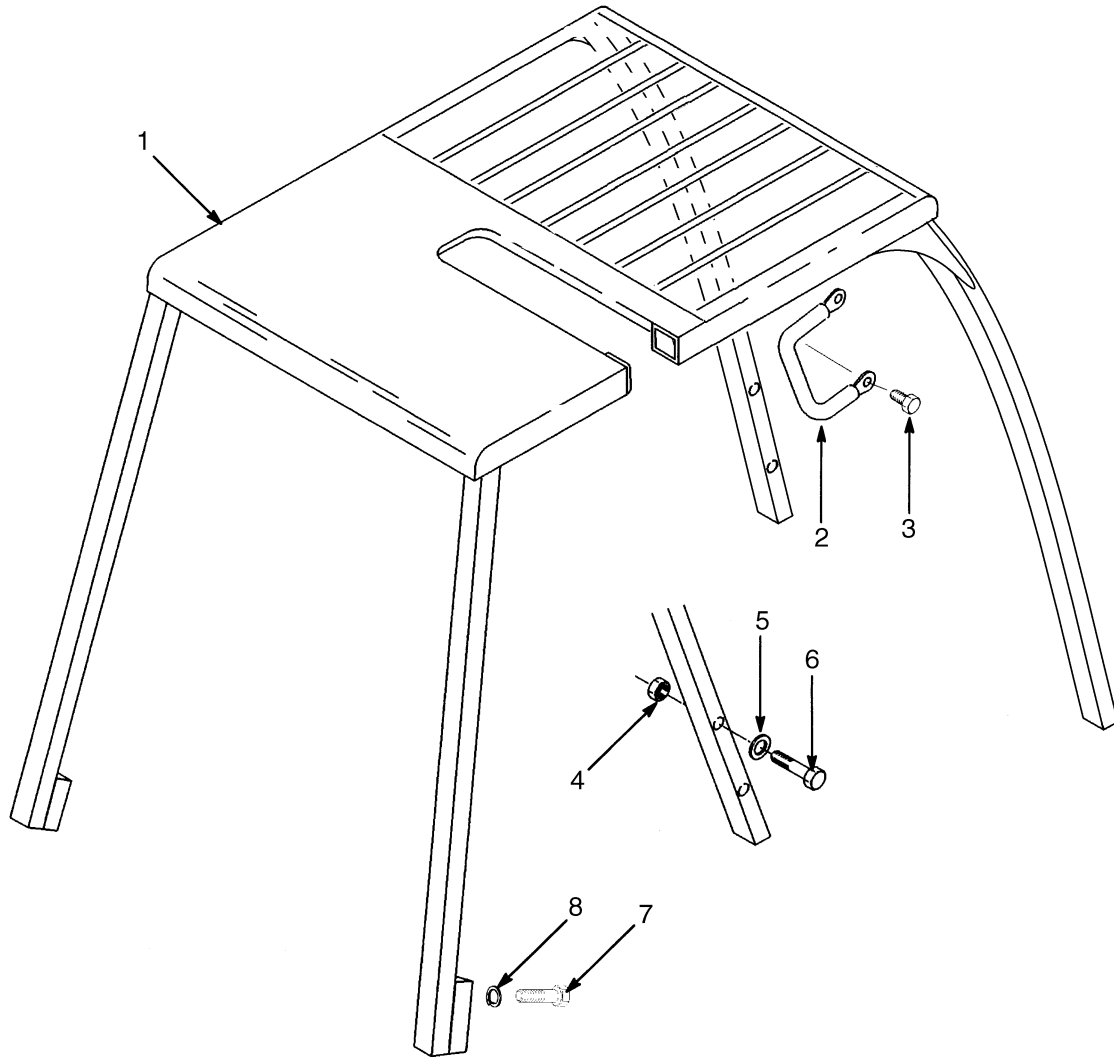


YP260318

**FULL SUSPENSION SEAT
SHEET 2 OF 2**

ITEM	PART NO.	DESCRIPTION	QTY
	1466006	Full Suspension Seat.....	1
1	1467523	Boot Kit.....	1
2	1467524	Roller and Bearing Kit	1
3	1467525	Bumper and Stop Kit	1
4	1467526	Bearing Shaft Kit	1
5	1467527	Weight Adjuster Indicator Kit	1
6	1467528	Knob Kit.....	1
7	1467529	Suspension Spring Kit.....	1

OVERHEAD GUARD (Figure 1-9) WITH CURVED LEG



BP120098

**OVERHEAD GUARD
WITH CURVED LEG**

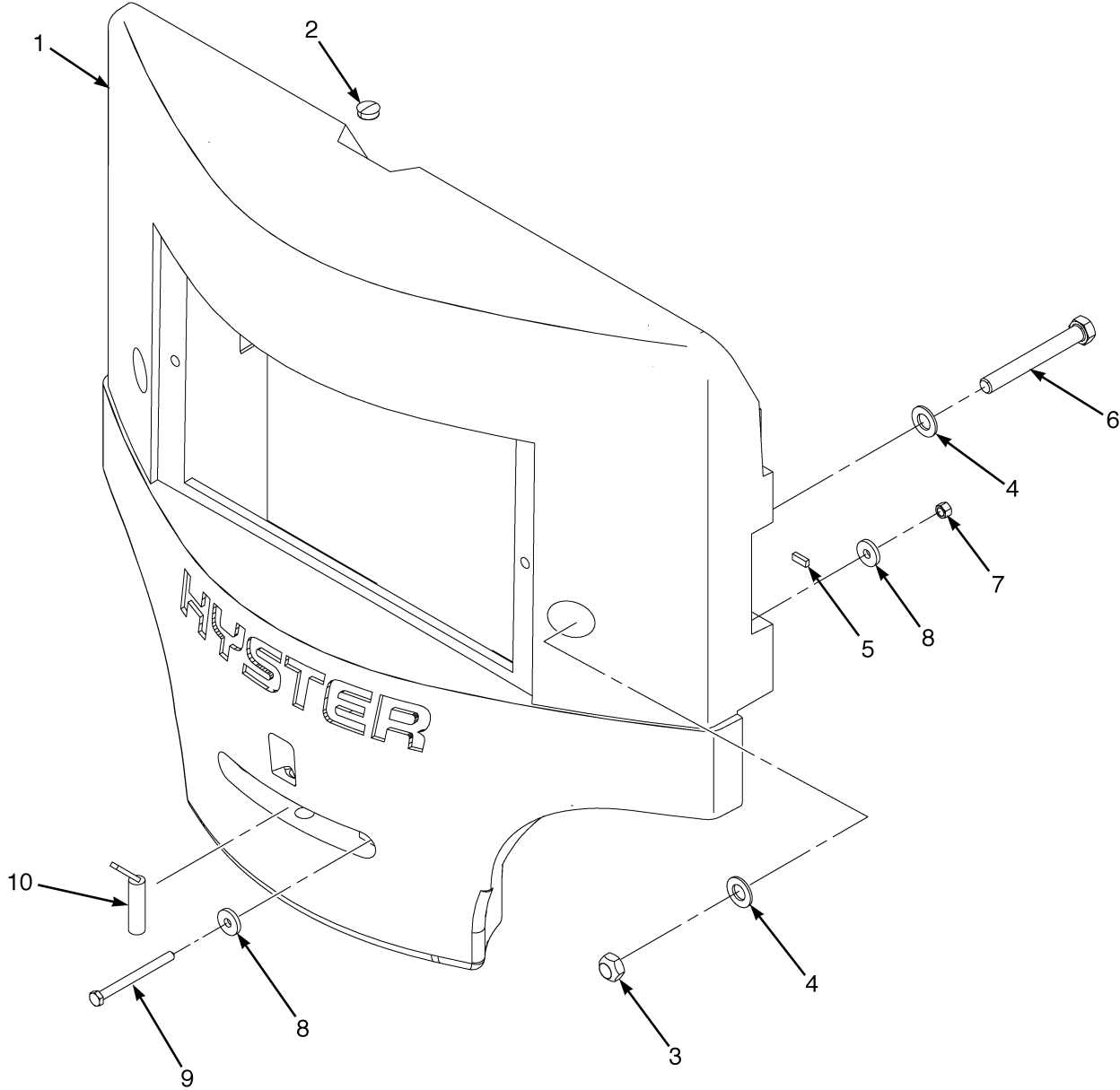
KEY:

A: E3.50-4.00XL, E4.50XLS

B: E4.50-5.50XL

ITEM	PART NO.	DESCRIPTION	QTY	
			A	B
1	1569574	Overhead Guard	1	..
1	1569575	Overhead Guard	1
2	1536813	Handle (Grab).....	1	1
3	329067	Screw.....	2	2
4	221355	Nut	4	4
5	15135	Washer	8	8
6	221585	Capscrew.....	4	4
7	293646	Capscrew.....	4	4
8	292683	Lockwasher.....	4	4

COUNTERWEIGHT (Figure 1-10)

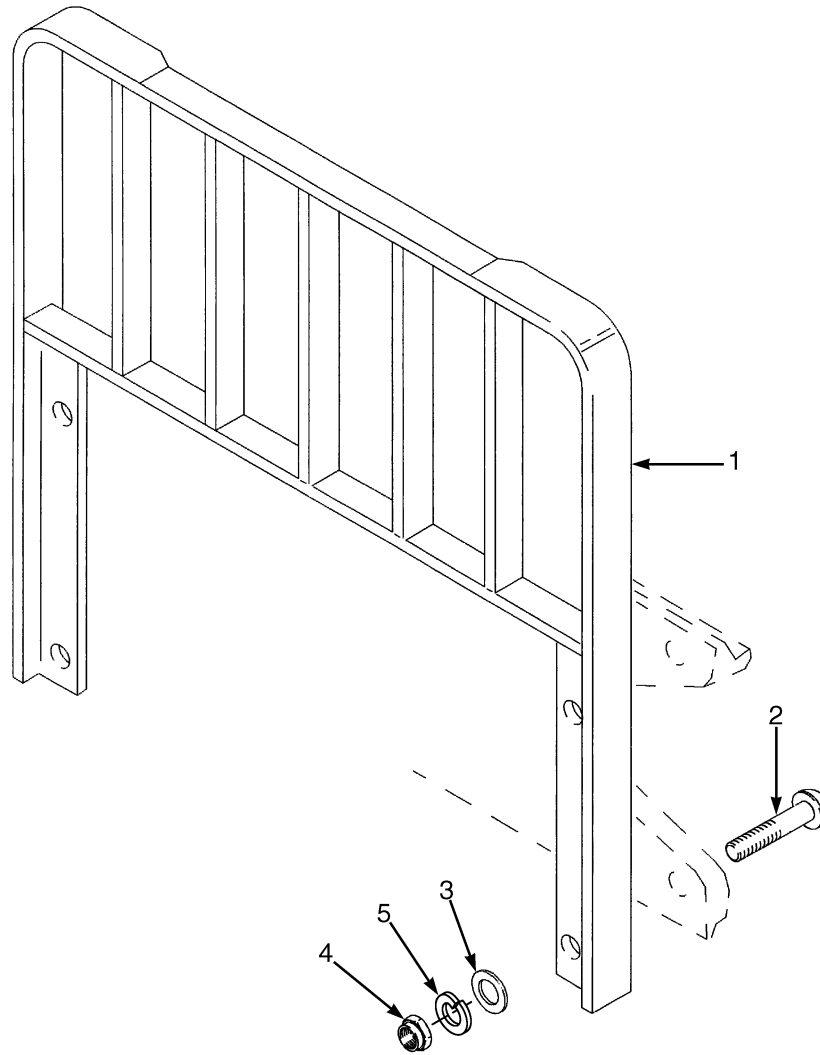


HP120822

COUNTERWEIGHT**KEY:****A: E3.50XL****B: E4.00XL, E4.50XLS****C: E4.50XL, E5.50XL**

ITEM	PART NO.	DESCRIPTION	QTY		
			A	B	C
1	1561127	Counterweight	1
1	1561128	Counterweight	1	..
1	1561129	Counterweight	1
2	375479	Plug	1	1	1
3	221359	Nut	2	2	2
4	221779	Washer	4	4	4
5	326003	Tape	AR	AR	AR
6	1388511	Capscrew	2	2	2
7	300937	Locknut	2	2	2
8	300932	Washer	4	4	4
9	287814	Capscrew	2	2	2
10	326347	Tow Pin	1	1	1

LOAD BACKREST EXTENSIONS (Figure 1-11)



BP290015

Thank you so much for reading.
Please click the “Buy Now!”
button below to download the
complete manual.



After you pay.

You can download the most
perfect and complete manual in
the world immediately.

Our support email:

ebooklibonline@outlook.com