

PARTS MANUAL

CHALLENGER

**H1.50-1.75XM, H2.00XMS
(E001)**

CUSTOMER EDITION

HYSTER

SECTIONS

1	FRAME
2	ENGINES
3	FUEL SYSTEM
4	ELECTRICAL SYSTEM
5	TRANSMISSION
6	STEERING SYSTEM
7	BRAKE SYSTEM
8	HYDRAULIC SYSTEM
9	MAST-TWO STAGE LIMITED FREE-LIFT
10	MAST-TWO STAGE FULL FREE-LIFT
11	MAST-THREE STAGE FULL FREE-LIFT
12	OPTIONS
13	NUMERICAL INDEX

TABLE OF CONTENTS

DESCRIPTION	PAGE
A	
AIR FILTER	
DIESEL	3-10
LPG	3-8
ALTERNATOR	
LPG AND DIESEL	4-34
AUXILIARY TUBES	
TWO AND THREE STAGE FULL FREE-LIFT	
FOUR FUNCTION GROUP	12-18
THREE FUNCTION GROUP	12-16
TWO STAGE LIMITED FREE-LIFT	
THREE FUNCTION GROUP	12-14
B	
BACK-UP ALARM	12-46
BATTERY	4-18
BRAKE ASSEMBLY	7-6
BRAKE LINES	7-4
BRAKE LINKAGE	7-2
BRAKE MASTER CYLINDER	7-12
C	
CAMSHAFT AND VALVES	
DIESEL	2-34
LPG	2-10
CARBURETOR	
LPG	3-18
CARRIAGE	
THREE STAGE FULL FREE-LIFT	11-18
TWO STAGE FULL FREE-LIFT	10-20
TWO STAGE LIMITED FREE-LIFT	9-12
CHARGE PUMP	5-4
CONNECTING HOSES	8-26
CONTROL VALVE	5-16
FOUR FUNCTION	
SINGLE RELIEF	8-22
THREE FUNCTION	
SINGLE RELIEF	8-16
COOLING SYSTEM	
DIESEL	2-40
LPG	2-20
COUNTERWEIGHT	1-22
COUNTERWEIGHT EXHAUST	
LPG	2-48
CRANKSHAFT AND PISTON	
DIESEL	2-32
LPG	2-8
CYLINDER BLOCK	
DIESEL	2-28
LPG	2-4
CYLINDER HEAD	

TABLE OF CONTENTS (Continued)

DESCRIPTION	PAGE
C (continued)	
DIESEL	2-26
LPG.....	2-2
D	
DIFFERENTIAL.....	5-18
DISTRIBUTOR	
LPG.....	4-28
DRIVE AXLE	5-20
DRIVE TIRE AND WHEEL	
SIT-SOLID TYRE.....	12-22
WATTS BRAND	12-20
DRIVE WHEEL AND TIRE	
RADIAL	12-23
DRIVE, REAR LIGHTS, AND SPOTLIGHT	
⇒S/N E001B-04795A.....	12-30
S/N E001B-04796A⇒.....	12-32
E	
ELECTRICAL	
COWL	4-8
ELECTRICAL SYSTEM	
DIESEL	4-6
LPG.....	4-2
END PLATE	5-22
ENGINE COVER.....	1-8
ENGINE ELECTRICAL SYSTEM	
DIESEL	2-44
LPG.....	2-14
ENGINE MOUNT	
DIESEL	2-46
LPG.....	2-24
EXHAUST	
DIESEL	2-50
F	
FENDER.....	1-4
FORKS	
POLISHED WITH FULL BOTTOM TAPER	1-31
STANDARD.....	1-30
FRAME AND FLOORPLATE	1-2
FREE LIFT	
THREE STAGE FULL FREE-LIFT	11-10
TWO STAGE FULL FREE-LIFT	10-8
FREE-LIFT CYLINDER	
THREE STAGE FULL FREE-LIFT	11-16
TWO STAGE FULL FREE-LIFT	10-18
FUEL FILTER	
DIESEL	3-28
FUEL SYSTEM	

TABLE OF CONTENTS (Continued)

DESCRIPTION	PAGE
F (continued)	
DIESEL	3-24
LPG	3-14
LPG ENGINE	2-16
FUEL TANK AND LINES	
DIESEL	3-32
G	
GOVERNOR	
LPG	3-22
H	
HEADER HOSE	
FOUR FUNCTION	
TWO STAGE FULL FREE-LIFT	10-26
TWO STAGE LIMITED FREE-LIFT	9-16
THREE AND FOUR FUNCTION	
THREE STAGE FULL FREE-LIFT	11-20
THREE FUNCTION	
TWO STAGE FULL FREE-LIFT	10-22
TWO STAGE LIMITED FREE-LIFT	9-14
HYDRAULIC CLUTCH	5-14
HYDRAULIC PUMP	
LOW NOISE	
DIESEL	8-8
LPG AND DIESEL	8-6
HYDRAULICS GROUP	8-2
I	
INJECTION PUMP	
DIESEL	3-30
INNER MAST	
THREE STAGE FULL FREE-LIFT	11-6
TWO STAGE FULL FREE-LIFT	10-4
TWO STAGE LIMITED FREE-LIFT	9-4
INSTRUMENT CLUSTER	
⇒S/N E001B-05125A	4-12
S/N E001B-05126A⇒	4-14
INTAKE AND EXHAUST MANIFOLD	
DIESEL	2-36
LPG	2-12
INTEGRAL SIDE-SHIFT CARRIAGE	
TWO AND THREE STAGE FULL FREE-LIFT	12-8
TWO STAGE LIMITED FREE-LIFT	12-6
INTEGRAL SIDE-SHIFT CYLINDER	12-10
INTEGRAL SIDE-SHIFT HYDRAULIC HOSES	
TWO AND THREE STAGE FULL FREE-LIFT	12-12
TWO STAGE LIMITED FREE-LIFT	12-11
INTERMEDIATE MAST	
THREE STAGE FULL FREE-LIFT	11-4

TABLE OF CONTENTS (Continued)

DESCRIPTION	PAGE
L	
LABELS.....	1-19
LEVER	
FORWARD AND REVERSE.....	4-16
LIFT CYLINDER	
LEFT HAND	
TWO STAGE LIMITED FREE-LIFT.....	9-8
RIGHT HAND	
TWO STAGE LIMITED FREE-LIFT.....	9-10
LIGHTS BACK-UP AND BRAKE	
S/N E001B06076B⇒.....	12-40
LOAD BACKREST EXTENSION.....	1-28
M	
MAIN CYLINDER	
LEFT HAND	
THREE STAGE FULL FREE-LIFT.....	11-12
TWO STAGE FULL FREE-LIFT	
⇒S/N A558B03806.....	10-10
S/N A558B03807⇒.....	10-12
RIGHT HAND	
THREE STAGE FULL FREE-LIFT.....	11-14
TWO STAGE FULL FREE-LIFT	
⇒S/N A558B03806.....	10-14
S/N A558B03807⇒.....	10-16
MAIN LIFT	
THREE STAGE FULL FREE-LIFT.....	11-8
TWO STAGE FULL FREE-LIFT.....	10-6
TWO STAGE LIMITED FREE-LIFT.....	9-6
MAST INSTALLATION.....	8-28
MIRROR.....	12-47
MONOTROL PEDAL.....	3-4
N	
NOISE REDUCTION	
ENGINE COVER.....	1-26
FRAME.....	1-24
NOZZLE HOLDER	
DIESEL.....	3-26
O	
OIL PUMP AND FILTER	
DIESEL.....	2-38
LPG.....	2-18
OUTER MAST	
THREE STAGE FULL FREE-LIFT.....	11-2
TWO STAGE FULL FREE-LIFT.....	10-2
TWO STAGE LIMITED FREE-LIFT.....	9-2
OVERHEAD GUARD.....	1-6

TABLE OF CONTENTS (Continued)

DESCRIPTION	PAGE
P	
PARK BRAKE LEVER	7-10
PUMP DRIVE	
LPG AND DIESEL	8-10
R	
RADIATOR AND HOSES	
DIESEL	2-42
LPG	2-22
REAR DRIVE LIGHT	
S/N E001B-04976A⇒	12-34
REGULATOR	
LPG	3-20
S	
SEAT	
NON-SUSPENSION	1-16
SUSPENSION	
SHEET 1 OF 2	1-12
SHEET 2 OF 2	1-14
SIDE-SHIFT CARRIAGE	12-2
SIDE-SHIFT CYLINDER	12-4
SIDELIGHT	
⇒S/N E001B-04795A	12-26
S/N E001B-04796A⇒	12-28
SOLENOID VALVE	
⇒S/N E001B04762A (Diesel), ⇒S/N E001B04891A (LPG)	5-5
STARTER MOTOR	
DIESEL	4-32
LPG	4-30
STEER TIRE AND WHEEL	12-24
STEERING COLUMN	6-2
STEERING CYLINDER	6-8
STEERING HAND PUMP	6-4
STROBE LIGHT	12-36
T	
TAIL LIGHT	
⇒S/N E001B-04795A	12-38
TANK	
LPG	3-12
THROTTLE ASSEMBLY	3-2
THROTTLE LINKAGE	
DIESEL	3-7
LPG	3-6
TILT CYLINDER	8-30
TIMING GEAR COVER AND OIL SUMP	
DIESEL	2-30
LPG	2-6
TORQUE CONVERTER	5-2
TRAIL AXLE	6-6

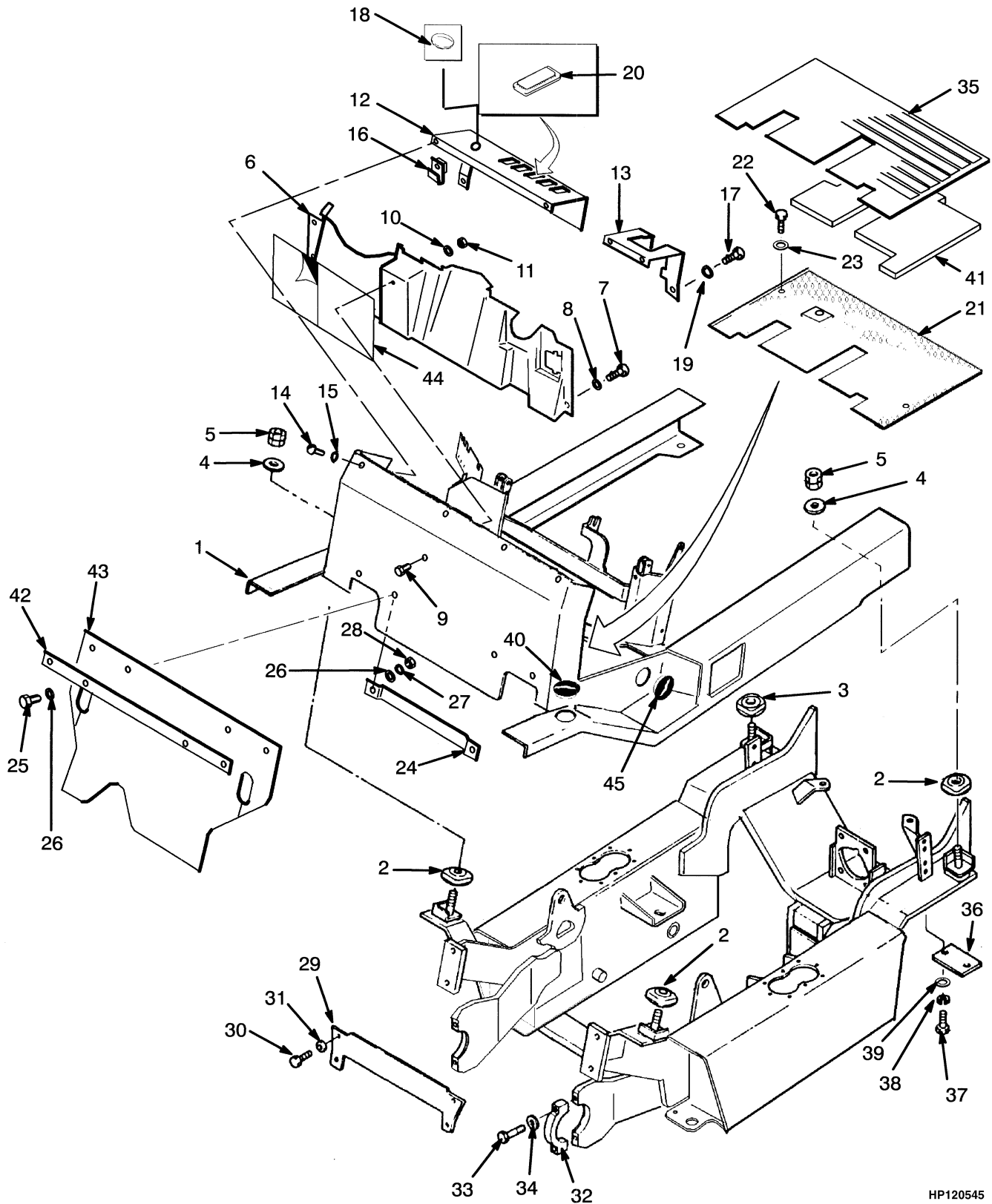
TABLE OF CONTENTS (Continued)

DESCRIPTION	PAGE
T (continued)	
TRANSMISSION GEARS.....	5-10
TRANSMISSION HOUSING	5-6
TRANSMISSION HYDRAULIC LINES	5-12
U	
UPSWEPT EXHAUST	
DIESEL	2-54
LPG.....	2-52
V	
VALVE ATTACHING PARTS	
FOUR FUNCTION	8-20
THREE FUNCTION	8-12
W	
WIRE HARNESS	
CHASSIS	
DIESEL.....	4-27
LPG	4-24
COWL	4-20
FORWARD AND REVERSE.....	4-22
LPG.....	4-25
MONOTROL PEDAL.....	4-23
REAR LIGHT	
S/N E001B06076B⇒.....	12-44
SEAT SWITCH.....	4-26
TAIL LIGHT	
⇒S/N E001B-04795A	12-42

SECTION 1
FRAME

DESCRIPTION	PAGE
COUNTERWEIGHT	1-22
ENGINE COVER	1-8
FENDER.....	1-4
FORKS	
POLISHED WITH FULL BOTTOM TAPER	1-31
STANDARD.....	1-30
FRAME AND FLOORPLATE	1-2
LABELS.....	1-19
LOAD BACKREST EXTENSION.....	1-28
NOISE REDUCTION	
ENGINE COVER	1-26
FRAME	1-24
OVERHEAD GUARD.....	1-6
SEAT	
NON-SUSPENSION	1-16
SUSPENSION	
SHEET 1 OF 2	1-12
SHEET 2 OF 2	1-14

FRAME AND FLOORPLATE (Figure 1-1)



HP120545

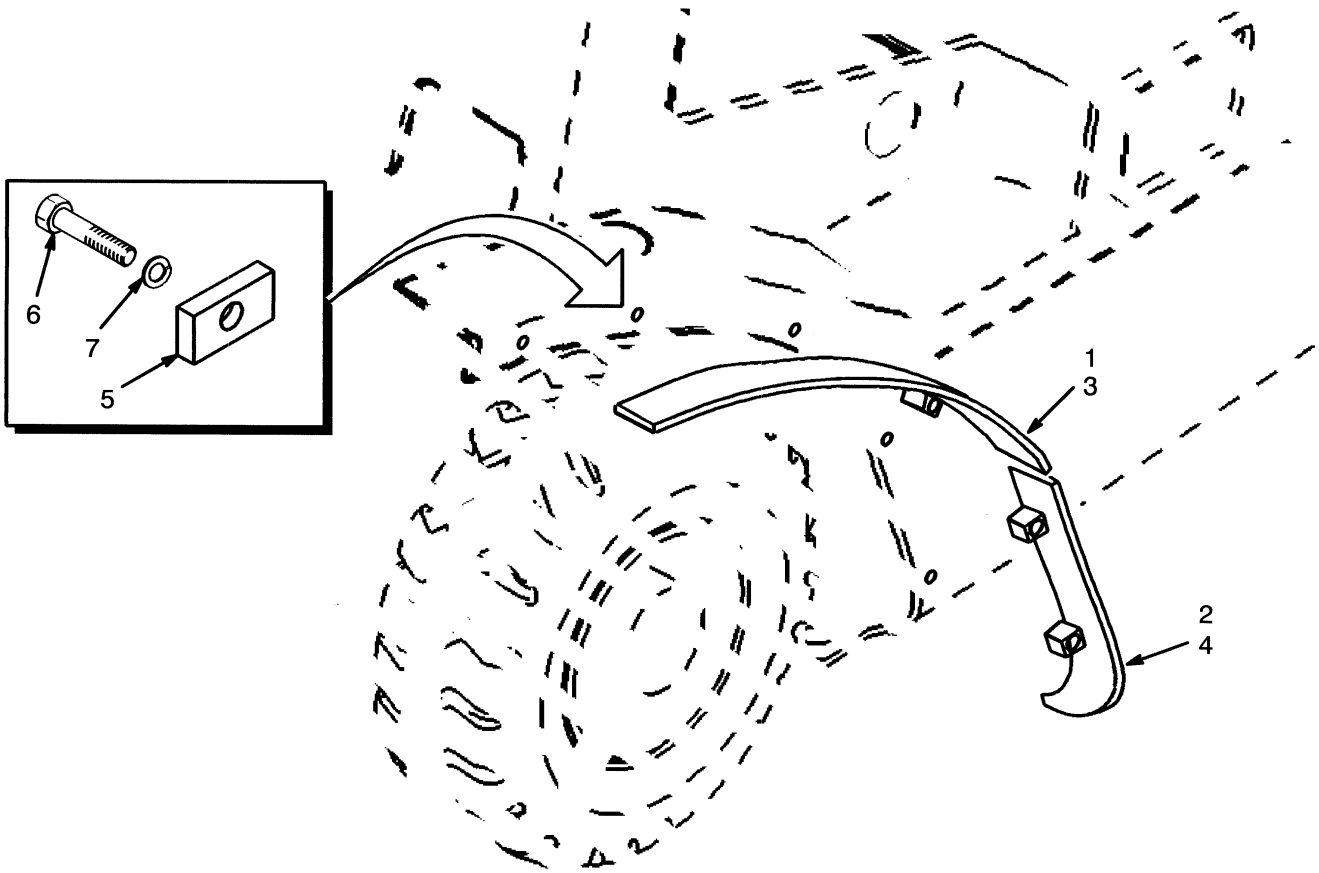
FRAME AND FLOORPLATE

ITEM	PART NO.	DESCRIPTION	QTY
1	1477470	Operator Module (LPG)	1
1	2041655	Operator Module (Diesel)	1
2	2021234	Insulator (Rubber).....	3
3	2021235	Insulator (Rubber).....	1
4	2021238	Washer	4
5	2021237	Nut	4
6	2021232	Cover	1
7	316678	Screw.....	4
8	320157	Washer	4
9	292501	Capscrew.....	1
10	320156	Washer	1
11	1359600	Nut	1
12	1385097	Panel (RH)	1
13	2021499	Panel (LH).....	1
14	369242	Capscrew.....	4
15	292681	Lockwasher.....	4
16	1350282	Retainer	4
17	316678	Screw.....	2
18	2022544	Cap (Choke Cable) (Diesel).....	1
19	292681	Lockwasher.....	2
20	376949	Cover	AR
21	2023789	Floorplate.....	1
22	136681	Capscrew.....	2
23	15175	Washer	2
24	2021231	Bracket.....	1
25	316678	Screw.....	2
26	320157	Washer	4
27	292681	Lockwasher.....	2
28	239503	Nut	2
29	2021665	Plate	1
30	2022636	Capscrew.....	4
31	296426	Washer (Hardened)	4
32	2021833	Cap	2
33	292533	Capscrew.....	4
34	2021834	Washer	4
35	2022821	Floormat	1
36	2021900	Cover	2
37	136985	Capscrew.....	4
38	292682	Lockwasher.....	4
39	320159	Washer	4
40	a 2021395	Cap	2
41	2022822	Barrier.....	1
41	a 2045369	Pad	1
42	a 2023813	Plate	1
43	a 2022029	Cover (Front).....	1
44	2022798	Label (Cowl Cover)	1
45	a 2022803	Cap (Tilt Pin).....	2

FOOTNOTES:

a Noise Reduction

FENDER (Figure 1-2)



HP120546

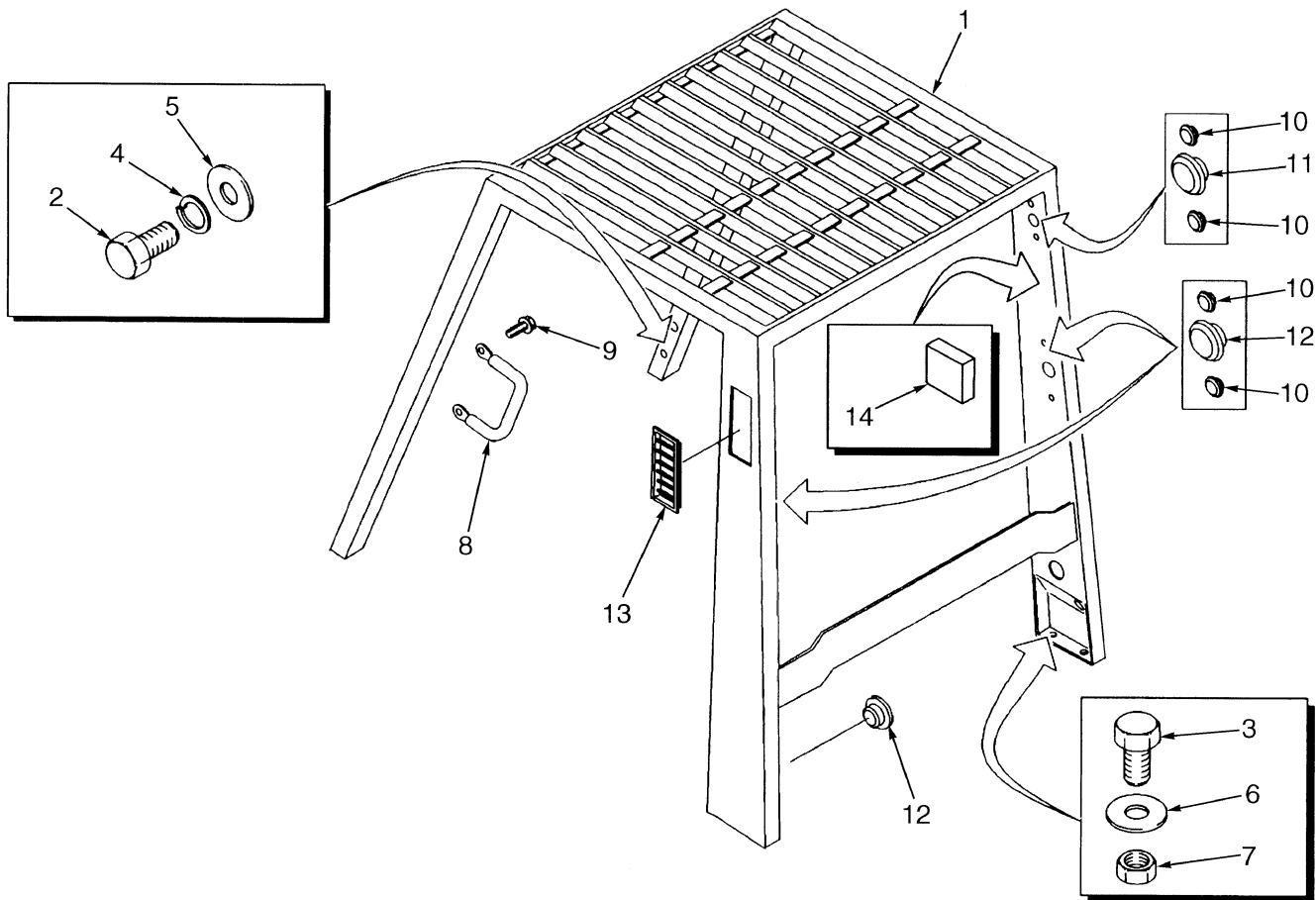
FENDER

ITEM	PART NO.	DESCRIPTION	QTY
1	a 2021869	Fender (Upper) (LH)	1
1	a 2021870	Fender (Upper) (RH).....	1
2	a 2021871	Fender (LH)	1
2	a 2021872	Fender (RH).....	1
3	b 2021873	Fender (LH)	1
3	b 2021874	Fender (RH).....	1
4	b 2021875	Fender (LH)	1
4	b 2021876	Fender (RH).....	1
5	1347144	Bar	5
6	136985	Capscrew.....	5
7	292682	Lockwasher.....	5

FOOTNOTES:

- a** Intermediate Track
- b** Wide Track

OVERHEAD GUARD (Figure 1-3)

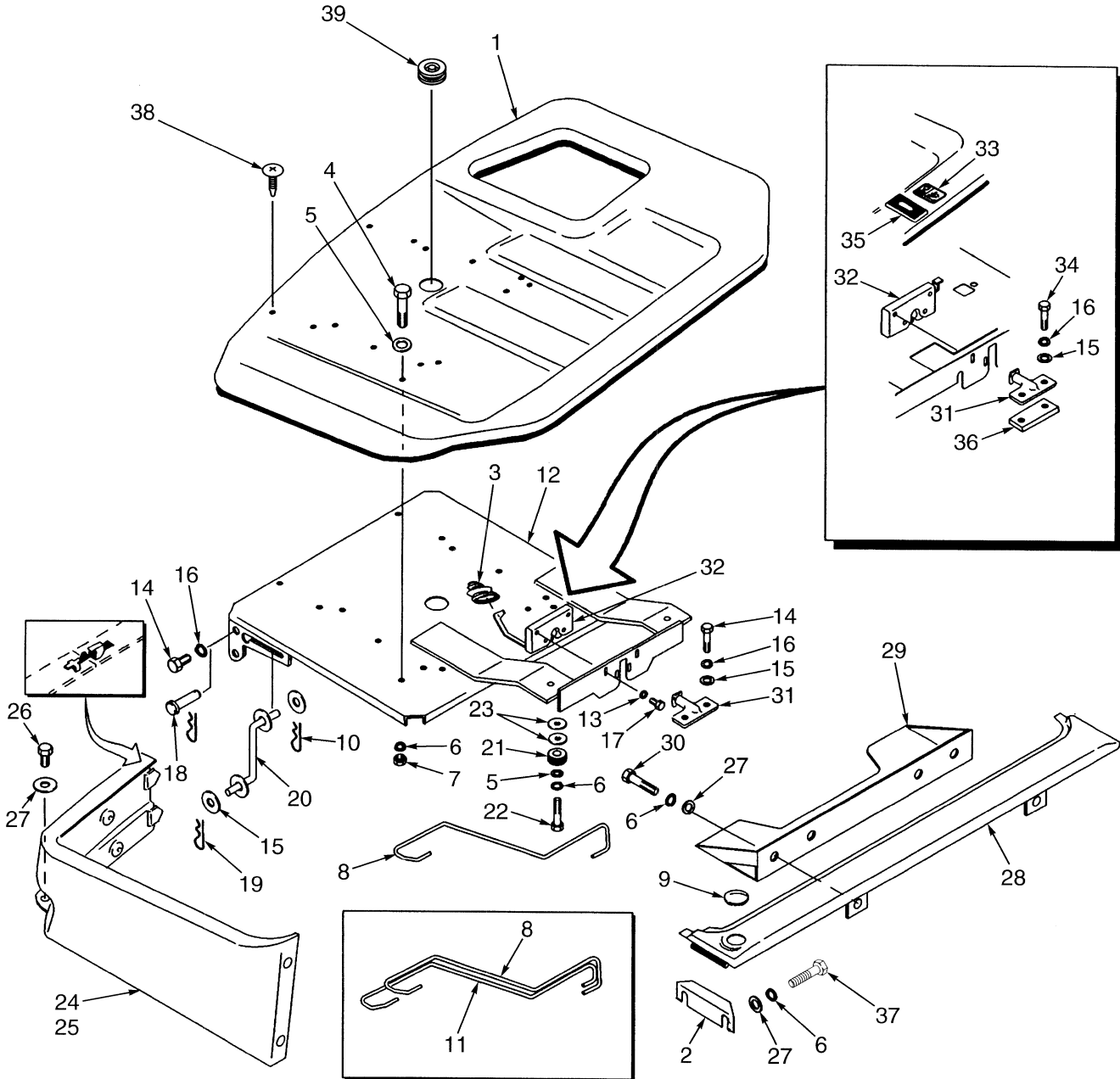


HP120547

OVERHEAD GUARD

ITEM	PART NO.	DESCRIPTION	QTY
1	2021662	Overhead Guard	1
2	132860	Capscrew	4
3	292528	Capscrew	4
4	292683	Lockwasher	4
5	15177	Washer	4
6	320161	Washer	4
7	300937	Locknut	4
8	1343647	Handle	1
9	329067	Screw	2
10	1363916	Plug	12
11	1363917	Plug	4
12	1363918	Plug	3
13	1339265	Grill	2
14	2022732	Pad (Noise Reduction).....	2

ENGINE COVER (Figure 1-4)



HP120548

ENGINE COVER**KEY:****A: Non-Suspension Seat****B: Suspension Seat**

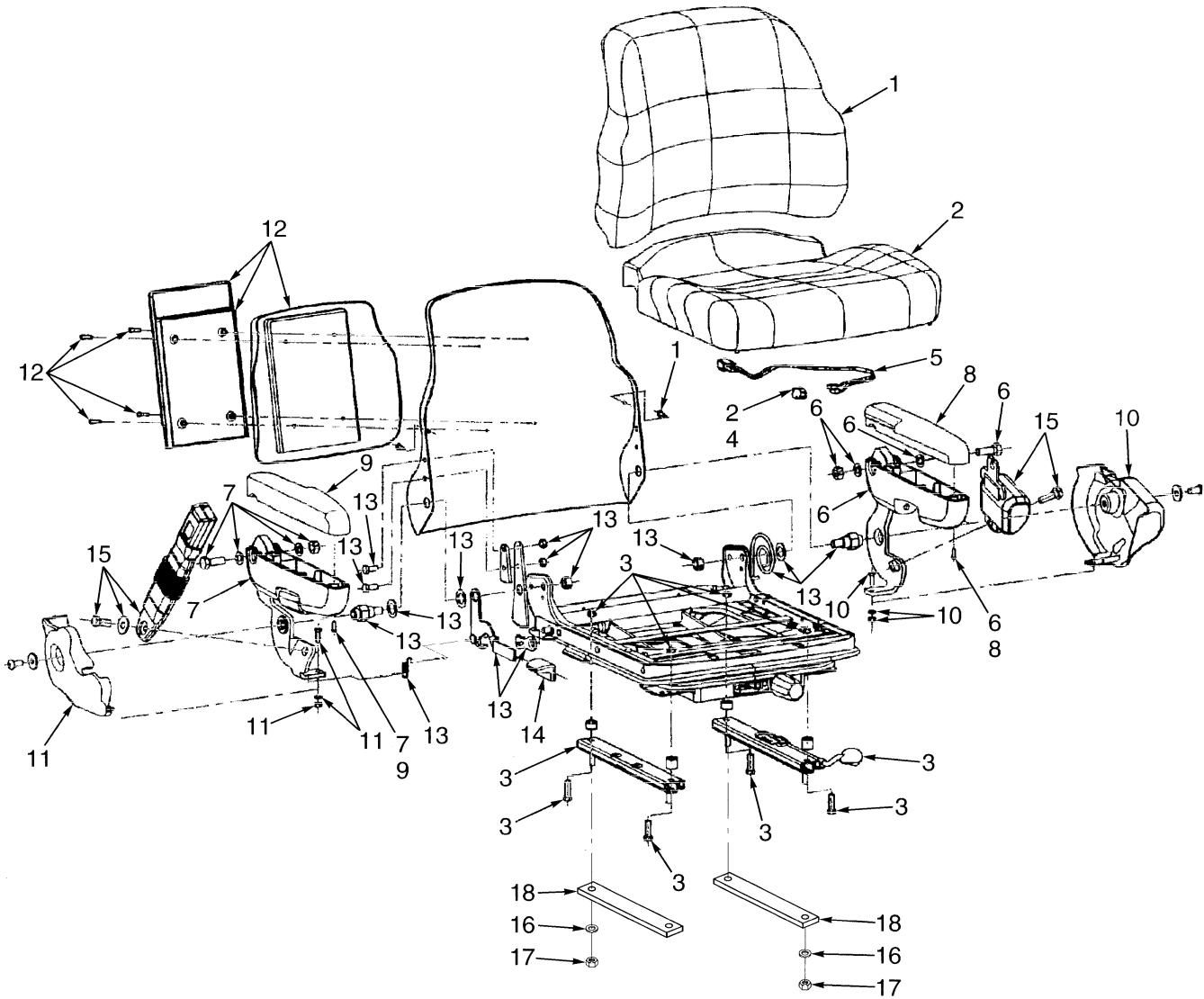
ITEM	PART NO.	DESCRIPTION	QTY	
			A	B
1	1385128	Cover	1	1
2	2021223	Bracket.....	2	2
3	1339786	Boot	1	1
4	176640	Capscrew.....	2	2
5	320157	Washer	6	6
6	292681	Lockwasher.....	12	12
7	239503	Nut	6	6
8	2026074	Spring	1	1
9	1363918	Plug	1	1
10	15222	Cotter Pin.....	1	1
11	2026073	Spring	1
12	ce 1389607	Seat Pan	1	1
12	bd 1498410	Seat Pan	1	1
13	320156	Washer	4	4
14	f 136985	Capscrew.....	2	2
14	g 287860	Capscrew.....	2	2
15	320159	Washer	6	6
16	292682	Lockwasher.....	2	2
17	199563	Capscrew.....	4	4
18	2021207	Pin	2	2
19	1362714	Cotter Pin.....	4	4
20	2021208	Support	1	1
21	2021213	Cushion (Rubber)	2	2
22	296167	Capscrew.....	2	2
23	15177	Washer	AR	AR
24	2023466	Panel (RH)	1	1
25	2021216	Panel (LH).....	1	1
26	136749	Capscrew.....	2	2
27	15175	Washer	10	10
28	2021218	Cover (Radiator)	1	1
29	2021219	Bracket.....	1	1
30	136749	Capscrew.....	4	4
31	1337148	Striker Plate	1	1
32	a 2021222	Latch	1	1
33	a 1386223	Nut	1	1
34	a 287860	Capscrew.....	2	2
35	a 1386224	Cover	1	1
36	a 1385129	Spacer	1	1
37	329067	Screw.....	4	4
38	1347045	Fastener.....	4	4
39	1359587	Grommet.....	1	1

FOOTNOTES:**a** Noise Reduction**b** ⇒ S/N E001B-02823Z LPG**c** S/N E001B-02824Z ⇒ LPG

ENGINE COVER

- d** ⇒ S/N E001B-02892Z Diesel
- e** S/N E001B-02893Z ⇒ Diesel
- f** ⇒ S/N E001B-03313Z
- g** S/N E001B-03314Z ⇒

SEAT (Figure 1-5) SUSPENSION SHEET 1 OF 2



HP120549

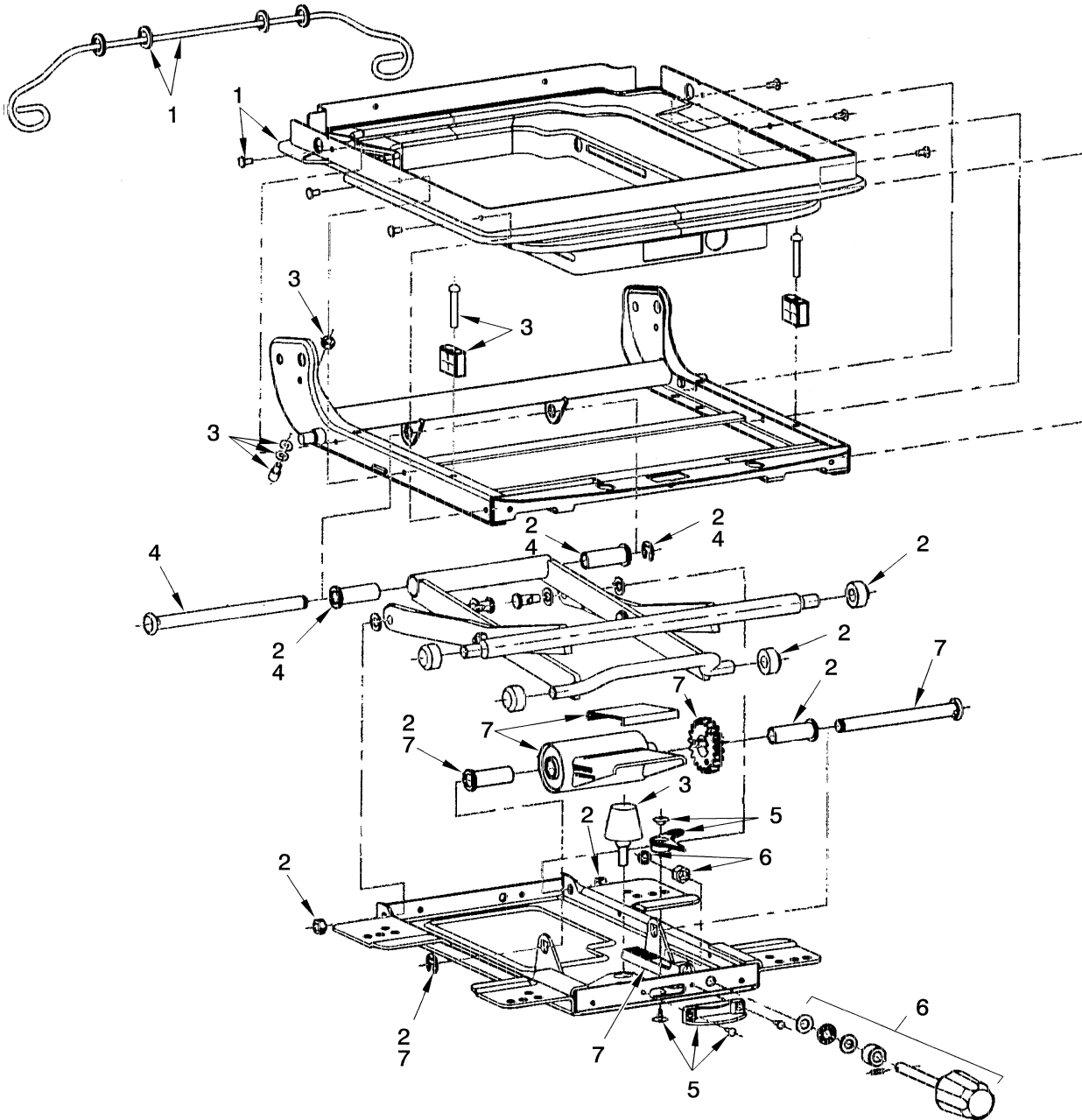
**SEAT
SUSPENSION
SHEET 1 OF 2**

ITEM	PART NO.	DESCRIPTION	QTY
	1466006	Full Suspension Seat (Vinyl).....	1
	1466007	Full Suspension Seat (Fabric)	1
1	1467533	Back Cushion (Vinyl)	1
1	1467535	Back Cushion (Fabric)	1
2	1467536	Seat Cushion (Fabric)	1
2	1494076	Seat Cushion (Vinyl).....	1
3	1467513	Slider Kit	1
4	1467514	Switch (Seat)	1
5	1467515	Wire Harness	1
6	1467516	Armrest (LH) (LH).....	1
7	1467517	Armrest (RH) (RH)	1
8	1467518	Cap (LH)	1
9	1467519	Cap (RH)	1
10	1467520	Cover (LH)	1
11	1467521	Cover (RH)	1
12	1467522	Holder Kit.....	1
13	1467530	Recliner Kit.....	1
14	1467531	Recliner Knob.....	1
15	1467532	Seat Belt Kit.....	1
16	15175	Washer	4
17	145639	Nut.....	4
18	b 2028186	Spacer	2
18	a 2039216	Spacer	1

FOOTNOTES:

- a** H1.50-1.75XM (LPG)
b H1.50-2.00XM And Diesel H2.00XMS

SEAT (Figure 1-6) SUSPENSION SHEET 2 OF 2

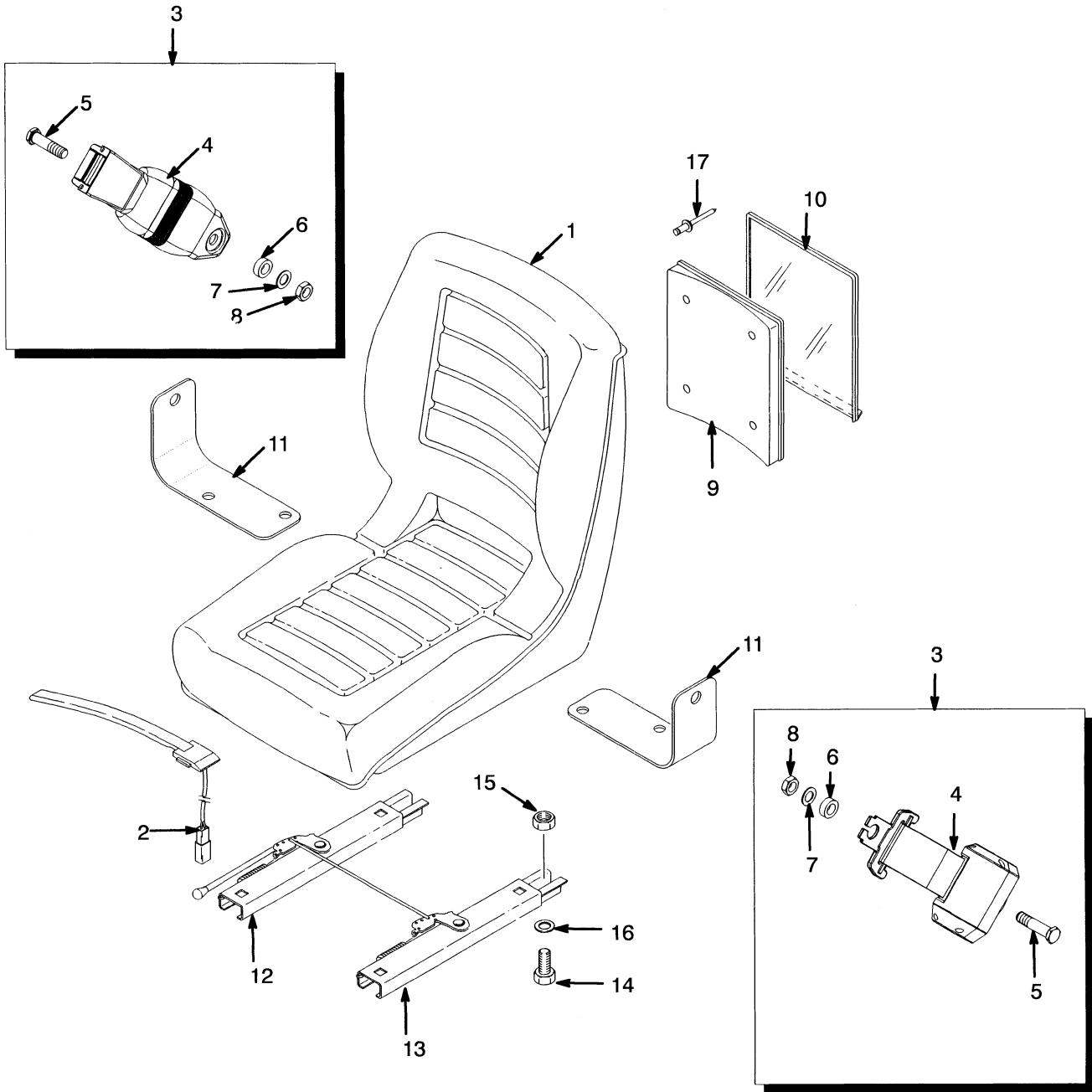


HP120550

**SEAT
SUSPENSION
SHEET 2 OF 2**

ITEM	PART NO.	DESCRIPTION	QTY
1	1467523	Boot Kit	1
2	1467524	Roller and Bearing Kit.....	1
3	1467525	Bumper and Stop Kit	1
4	1467526	Bearing Shaft Kit.....	1
5	1467527	Weight Adjuster Indicator Kit	1
6	1467528	Knob Kit	1
7	1467529	Suspension Spring Kit	1

SEAT (Figure 1-7) NON-SUSPENSION



HP120551

**SEAT
NON-SUSPENSION**

ITEM	PART NO.	DESCRIPTION	QTY
	1460231	Non-Suspension Seat.....	1
1	364911	Seat.....	1
3	1461081	Seat Belt Kit.....	1
4	Seat Belt.....	1
5	Screw.....	2
6	Washer.....	2
7	Washer.....	2
8	Nut.....	2
9	335955	Information Case.....	1
10	335991	Cover.....	1
11	1470175	Bracket.....	1
12	1470176	Seat Rail.....	1
13	1470177	Seat Rail.....	1
14	18498	Capscrew.....	4
15	145639	Nut.....	4
16	15175	Washer.....	4
17	Rivet.....	4

Thank you so much for reading.
Please click the “Buy Now!”
button below to download the
complete manual.



After you pay.

You can download the most
perfect and complete manual in
the world immediately.

Our support email:

ebooklibonline@outlook.com