

PARTS MANUAL

CHALLENGER

**H20.00-32.00F/FS
(E008)**

CUSTOMER EDITION

HYSTER

SECTIONS

1	FRAME
2	ENGINES
3	FUEL SYSTEM
4	ELECTRICAL SYSTEM
5	TRANSMISSION
6	DRIVE AXLE
7	STEERING SYSTEM
8	BRAKE SYSTEM
9	HYDRAULIC SYSTEM
10	MAST-TWO STAGE VISTA
11	ATTACHMENTS
12	OPTIONS
13	NUMERICAL INDEX

TABLE OF CONTENTS

DESCRIPTION	PAGE
A	
ACCESSORY DRIVE BELT AND TENSIONER	
TIER I ENGINE	4-172
TIER II ENGINE	4-174
ACCUMULATOR	9-32
PISTON TYPE	9-35
ACCUMULATOR CHARGE VALVE	
ATTACHING PARTS	
⇒S/N E008E01984B.....	9-114
⇒S/N E008E-01541	9-26
S/N E008E-01542⇔S/N E008E-01550	9-28
S/N E008E-01551⇒	9-30
AIR COMPRESSOR PLUGS	
TIER II ENGINE	
S/N E008E01985B⇒.....	2-152
AIR FUEL CONTROL PLUMBING	
TIER I ENGINE	3-36
AIR INLET	
TIER I ENGINE	3-38
TIER II ENGINE	3-40
AIR INTAKE CONNECTION	
TIER I ENGINE	2-78
TIER II ENGINE	2-80
AIR INTAKE HEATER	
TIER I ENGINE	2-88
AIR INTAKE HEATER CONNECTION	
TIER II ENGINE	
S/N E008E09185B⇒.....	2-146
AIR TRANSFER CONNECTION	
TIER II ENGINE	
S/N E008E01985B⇒.....	2-144
ALTERNATOR	
⇒S/N E008E-1678	4-166
S/N E008E01886Z⇒ S/N PENDING PER ECN 68204-25.....	4-170
S/N E008E1679⇔S/N E008E01885Z	4-168
ALTERNATOR MOUNT	
TIER I ENGINE	4-176
TIER II ENGINE	4-178
ANTI-SLIPPING DEVICE	
S/N E008E1789⇔S/N E008E01984B	9-144
ANTI-SLIPPING DEVICE AND LIFT INTERRUPT	
S/N E008E1811⇔S/N E008E01984B	9-146
ATTACHING PARTS	
SHUT-OFF COCK AND SHUTTLE VALVE	
S/N E008D1589⇔S/N E008E01984B, S/N E008E1657⇔S/N E008E01984B.....	9-136
ATTACHMENT	
LABELS	11-30
ATTACHMENT CONTROL VALVE	
⇒S/N E008D1602, ⇒S/N E008E1753	9-74
AUXILIARY COOLANT PUMP	
OPTIONAL.....	5-52
AXLE HOUSING AND ATTACHING PARTS	

TABLE OF CONTENTS (Continued)

DESCRIPTION	PAGE
A (continued)	
H20.00-25.00F (H440FS-H550FS, H550F) WET BRAKE S/N E008E01985B⇒	6-36
H28.00-32.00F (H620-700F/FS) WET BRAKE S/N E008E01985B⇒	6-38
B	
BLOCK VENT PLUMBING TIER I ENGINE	2-68
BRAKE FOUR PISTON H28.00-32.00F (H620-700F/FS) S/N E008E1533⇒	8-6
H20.00-25.00F (H440FS-550F/FS)	8-2
SIX PISTON H28.00-32.00F (H620-700F/FS) ⇒S/N E008E1532	8-4
BRAKE ASSEMBLY WET BRAKE H20.00-25.00F (H440FS-550F/FS) S/N E008E01985B⇒	6-46
H28.00-32.00F (H620-700F/FS) S/N E008E01985B⇒	6-48
BRAKE LINES DECLUTCH AND SERVICE BRAKE S/N E008E01866⇒	8-12
H20.00-32.00F (H440FS-700FS) S/N E008E01866⇒	8-18
TREADLE VALVE AND PARK BRAKE VALVE ⇒S/N E008E01865	8-8
WET BRAKE H28.00-32.00F S/N E008E02017B⇒	8-26
S/N E008E01984B⇔S/N E008E02016B	8-22
WITH SHUTTLE VALVE H20.00-32.00F (H440-700F/FS) S/N E008D1501⇔S/N E008D1526	8-34
H20.00-32.00F (H550-700F) S/N E008D1618⇔S/N E008D01865, S/N E008E01666⇔S/N E008E01865	8-38
WITHOUT SHUTTLE VALVE H20.00-32.00F AND 440FS-700FS S/N E008D1527⇒, S/N E008E1501⇔S/N E008E1514	8-14
H20.00-32.00FS (H440-700FS) S/N E008D01618⇔S/N E008D01865, S/N E008E1666⇔S/N E008E01865	8-30
BUMPERS EXTENDABLE ATTACHMENT S/N E008E1811⇒	11-72

TABLE OF CONTENTS (Continued)

DESCRIPTION	PAGE
C	
CABIN HEATER PLUMBING	
TIER II ENGINE	
S/N E008E01985B⇒.....	2-148
CAMSHAFT AND TIMING GEAR	
TIER II ENGINE	
S/N E008E01985B⇒.....	2-136
CARRIAGE	
TWO STAGE VISTA.....	10-26
CHARGE PUMP.....	5-26
CLUTCH	
FORWARD AND SECOND.....	5-18
LOW GEAR	
⇒S/N E008E01910Z.....	5-14
S/N E008E01911Z⇒.....	5-16
REVERSE AND THIRD.....	5-22
CONTAINER HANDLING ATTACHMENT INSTALLATION	
DEDICATED CARRIAGE.....	12-24
⇒S/N E008E1811.....	9-148
CONTROL	
LIFT AND TILT	
H28.00-32.00F	
S/N E008E01985B⇒.....	9-44
⇒S/N E008E01984B.....	9-40
CONTROL VALVE	
⇒S/N E008D1588, ⇒S/N E008E1656.....	9-54
S/N E008D1589⇒, S/N E008E1657⇒.....	9-58
S/N E008D1603↔S/N E008E01984B, S/N E008E1754↔S/N E008E01984B.....	9-78
⇒S/N E008E01910Z.....	5-32
S/N E008E01911Z⇒.....	5-34
CONTROL VALVE AND ATTACHING PARTS	
S/N E008E01985B⇒.....	9-50
CONTROL VALVE ATTACHING PARTS	
ATTACHMENT CONTROL VALVE AND PRESSURE SWITCH	
⇒S/N E008E1810.....	9-116
ONE FUNCTION	
⇒S/N E008D1588, ⇒S/N E008E1656.....	9-128
S/N E008D1589↔S/N E008E01984B, S/N E008E1657↔S/N E008E01984B.....	9-132
TWO FUNCTION	
⇒S/N E008D1588, ⇒S/N E008E1656.....	9-120
S/N E008D1589↔S/N E008D01984B, S/N E008E1657↔S/N E008E01984B.....	9-124
WITH ANTI-SLIPPING DEVICE AND LIFT INTERRUPT	
S/N E008E1811↔S/N E008E01984B.....	9-138
CONVERTER HOUSING.....	5-6
COOLANT HEATER STARTING AID PLUGS	
TIER II ENGINE	
S/N E008E01985B⇒.....	2-153
COOLING	
⇒S/N E008D1602, ⇒S/N E008E1697.....	2-100
TIER I ENGINE	
S/N E008E1603⇒, S/N E008E1698⇒.....	2-102
TIER II ENGINE.....	2-104

TABLE OF CONTENTS (Continued)

DESCRIPTION	PAGE
C (continued)	
CORROSION RESISTER	
TIER I ENGINE.....	2-82
TIER II ENGINE	
S/N E008E01985B⇒.....	2-86
CORROSION RESISTOR	
TIER II ENGINE	
⇒S/N E008E01984B.....	2-84
COUNTERWEIGHT	1-46
CRANKCASE BREATHER	
TIER I ENGINE.....	2-10
TIER II ENGINE.....	2-12
CRANKSHAFT	
TIER II ENGINE	
S/N E00E01985B⇒.....	2-128
CRANKSHAFT MAIN BEARINGS	
TIER II ENGINE	
S/N E008E01985B⇒.....	2-130
CYLINDER	
EXTENDABLE ATTACHMENT	
⇒S/N E008E1810.....	11-44
FIXED ATTACHMENT WITHOUT SLEWING	
⇒S/N E008E1810.....	11-42
TWIST LOCK	
⇒S/N A660E1530.....	11-48
S/N A660E1531↔S/N E008E1810.....	11-49
S/N E008E1811⇒.....	11-50
CYLINDER BLOCK	
TIER II ENGINE	
S/N E008E01985B⇒.....	2-6
CYLINDER BLOCK COVER	
TIER I ENGINE.....	2-8
CYLINDER HEAD	
TIER II ENGINE	
S/N E008E01985B⇒.....	2-134
D	
DEDICATED CARRIAGE	12-22
DIFFERENTIAL AND CARRIER	
WITH BRAKE ASSEMBLY (SHEET 1 OF 2)	
H28.00-32.00F (H620-700F/FS)	
⇒S/N E008E1837	6-24
WITH BRAKE ASSEMBLY (SHEET 1 OF 3)	
H20.00-25.00F (H440FS-550F/FS).....	6-12
WITH BRAKE ASSEMBLY (SHEET 2 OF 2)	
H28.00-32.00F (H620-700F/FS)	
⇒S/N E008E1837	6-28
WITH BRAKE ASSEMBLY (SHEET 2 OF 3)	
H20.00-25.00F (H440FS-550F/FS).....	6-16
WITH BRAKE ASSEMBLY (SHEET 3 OF 3)	

TABLE OF CONTENTS (Continued)

DESCRIPTION	PAGE
D (continued)	
H20.00-25.00F (H440FS-550F/FS).....	6-20
DIFFERENTIAL CARRIER	
H28.00 - H32.00F/FS (H620F-H700F/FS)	
S/N E008E1838⇒.....	6-32
DIRECTIONAL CONTROL VALVE	
ATTACHING PARTS	
S/N E008E1811↔S/N E008E01984B.....	9-118
S/N E008E1811↔S/N E008E01984B	9-76
DRIVE AXLE	
H20.00-25.00F (H440FS-550F/FS)	
⇒S/N E008E01984B.....	6-2
H28.00 - H32.00F/FS (H620F-700F/FS)	
S/N E008E01838Y⇒.....	6-10
H28.00-32.00F (H620F-700F/FS)	
⇒S/N E008E01837Y.....	6-6
DRIVE SHAFT.....	6-54
DRIVE TRAIN	
FRONT GEAR	
TIER I ENGINE	2-74
DUST SHIELD.....	2-90
E	
ELECTRICAL	
ATTACHMENT	
SHEET 1 OF 2	
⇒S/N E008E1810	11-24
SHEET 2 OF 2	
⇒S/N E008E1810	11-27
EXTENDABLE CONTAINER ATTACHMENT	
S/N E008E1811⇒.....	11-28
FRAME (TIER I ENGINE)	
SHEET 1 OF 2	4-6
SHEET 2 OF 2	4-10
FRAME (TIER II ENGINE)	
SHEET 1 OF 4	4-12
SHEET 2 OF 4	4-16
SHEET 3 OF 4	4-18
SHEET 4 OF 4	4-22
SIDE-SHIFT CARRIAGE	12-16
STANDARD CARRIAGE	
TWO STAGE VISTA	10-30
ELECTRONIC FOOT PEDAL MOUNT	
TIER II ENGINE.....	3-46
ENGINE ASSEMBLY.....	2-5
ENGINE CONTROL SYSTEM	
TIER II ENGINE	
S/N E008E01985B⇒.....	4-210
ENGINE MOUNT.....	2-108
EXHAUST.....	2-96

TABLE OF CONTENTS (Continued)

DESCRIPTION	PAGE
E (continued)	
EXHAUST CONNECTION	
TURBOCHARGER	
TIER I ENGINE	2-26
TIER II ENGINE	2-28
EXHAUST MANIFOLD	
TIER I ENGINE	2-30
TIER II ENGINE	2-32
EXTENDABLE ATTACHMENT	
⇒S/N E008E1810.....	11-8
WITH DEDICATED CARRIAGE.....	11-12
EXTENSION CYLINDER ASSEMBLY	
S/N E008E1811⇒.....	11-46
F	
FAN DRIVE	
TIER II ENGINE	2-58
FAN PULLEY	
TIER I ENGINE	2-56
FAN SPACER	2-60
FIRE EXTINGUISHER	12-34
FIXED ATTACHMENT	
DEDICATED CARRIAGE.....	11-6
⇒S/N E008E1810.....	11-4
FLOOR PLATES AND COVERS	
H20.00-32.00F, H550-700F	1-38
H20.00-32.00FS, H440-700FS	1-42
FLOW AMPLIFIER	7-16
ATTACHING PARTS	
⇒S/N E008E01984B.....	9-140
FLOW VALVE	
EXTENDABLE ATTACHMENT	
⇒S/N E008E1810	11-60
FLYWHEEL	
TIER I ENGINE	2-40
TIER II ENGINE	2-42
FLYWHEEL HOUSING	
TIER II ENGINE	
S/N E008E01985B⇒.....	2-150
FORK POSITIONER	
SIDE-SHIFT CARRIAGE	12-30
STANDARD CARRIAGE	
TWO STAGE VISTA	10-32
FORKS	12-33
FRONT ENGINE SUPPORT	
TIER I ENGINE	2-34
TIER II ENGINE	2-36
FRONT GEAR COVER	
TIER II ENGINE	
S/N E008E01985B⇒.....	2-142

TABLE OF CONTENTS (Continued)

DESCRIPTION	PAGE
F (continued)	
FRONT GEAR TRAIN ACCESSORY DRIVE	
TIER II ENGINE	
S/N E008E01985B⇒.....	2-124
FUEL DRAIN	
TIER I ENGINE.....	3-16
FUEL FILTER	
TIER II ENGINE	
⇒S/N E008E01984B.....	3-20
S/N E008E01985B⇒.....	3-22
FUEL FILTER ASSEMBLY	
TIER I ENGINE.....	3-18
FUEL FILTER PLUMBING	
TIER II ENGINE.....	3-24
FUEL INJECTOR AND INJECTOR PLUMBING	
TIER II ENGINE	
S/N E008E01985B⇒.....	3-30
FUEL INJECTOR PUMP MOUNTING	
TIER II ENGINE	
S/N E008E01985B⇒.....	3-34
FUEL INLET	
TIER I ENGINE.....	3-26
FUEL INLET TUBE	
TIER I ENGINE.....	3-28
FUEL PLUMBING	
TIER II ENGINE	
S/N E008E01985B⇒.....	3-32
FUEL SYSTEM	
⇒S/N E008D1602, ⇒S/N E008E1697.....	3-2
S/N E008D1603↔S/N E008E01984B, S/N E008E1698↔S/N E008E01984B.....	3-4
S/N E008E01985B⇒.....	3-8
FUEL TRANSFER PUMP	
TIER I ENGINE.....	3-12
TIER II ENGINE.....	3-14
FUSE PANEL AND RELAYS	
TIER II ENGINE	
S/N E008E01886Z↔S/N E008E01984B.....	4-80
S/N E008E01985B⇒ INC. 1979.....	4-84
G	
GEAR HOUSING	
TIER II ENGINE.....	2-38
GEAR TRAIN ACCESSORY PLUMBING	
FRONT	
TIER II ENGINE.....	2-76
GENERAL TRUCK.....	1-2

TABLE OF CONTENTS (Continued)

DESCRIPTION	PAGE
H	
HAND PUMP	
OPERATOR COMPARTMENT	
⇒S/N E008E1592	1-16
S/N E008E1593⇒	1-18
HEADER HOSE	12-8
HEATER	1-32
HEATER CONTROL	1-35
HOOD	
H20.00-32.00FS, H440-700FS	1-66
HOOD AND LINKAGE	
H20.00-32.00F, H550-700F	
TIER I ENGINE	1-58
HOOD LINKAGE	
H20.00-32.00F, H550-700F	
TIER II ENGINE	1-62
HUB	
EXTENDABLE ATTACHMENT	
⇒S/N E008E1810	11-55
HUB AND SHAFT ASSEMBLY	
WET BRAKE	
H20.00-25.00F (H440FS-550F/FS)	
S/N E008E01985B⇒	6-40
H28.00-32.00F (H620-700F/FS)	
S/N E008E01985B⇒	6-42
HYDRAULIC	
EXTENDABLE ATTACHMENT WITH DEDICATED CARRIAGE	
S/N E008E1811⇒	11-18
EXTENDABLE ATTACHMENT WITH SIDE-SHIFT CARRIAGE	
⇒S/N E008E1810	11-14
FIXED ATTACHMENT	
⇒S/N E008E1810	11-20
PRESSURE CHECK LINE	
⇒S/N E008E01984B	9-90
SIDE-SHIFT CARRIAGE	12-18
HYDRAULIC PUMP	
DUAL	
EMPTY CONTAINER HANDLER	
⇒S/N E008E-01906Z	9-82
FORKLIFT TRUCK	
⇒S/N E008E01984B	9-86
S/N E008E-1907Z⇒	9-84
HYDRAULIC STOP	
S/N E008E1811⇒	11-64
HYDRAULIC SUPPLY AND RETURN	
H28.00-32.00F	
SHEET 1 OF 2	
S/N E008E01985B⇒	9-12
H28.00-H32.00F	
SHEET 2 OF 2	
S/N E008E01985B⇒	9-14
SHEET 1 OF 2	

TABLE OF CONTENTS (Continued)

DESCRIPTION	PAGE
H (continued)	
⇒S/N E008E01984B.....	9-4
SHEET 2 OF 2	
⇒S/N E008E01985B.....	9-8
I	
INDICATOR	
TWIST LOCK	
⇒S/N E008E1810.....	11-52
INSTRUMENT PANEL	
SHEET 1 OF 2.....	4-56
SHEET 2 OF 2	
⇒S/N E008E1810.....	4-60
S/N E008E1811↔S/N E008E01865Y.....	4-64
TIER I ENGINE	
SHEET 2 OF 2	
S/N E008E01866↔S/N E008E01885Z.....	4-68
TIER II	
S/N E008E01886Z⇒.....	4-74
INTERLOCK VALVE	
⇒S/N E008E1810.....	11-54
J	
JUNCTION BLOCK	
⇒S/N E008D1523, ⇒S/N E008E1542, S/N E008E1543⇒.....	9-22
L	
LABELS.....	1-68
LATCH	
HYDRAULIC.....	1-14
LIFT	
TWO STAGE LIMITED FREE-LIFT.....	10-10
LIFT CYLINDER	
H20.00-25.00F (H440FS-550F/FS)	
TWO STAGE VISTA	
⇒S/N B531E1665.....	10-14
S/N B531E1666↔S/N E008E1546.....	10-16
H20.00-25.00FS (H440FS-550F/FS)	
TWO STAGE VISTA	
S/N E008E1547⇒.....	10-18
H28.00-32.00F (H620-700F/FS)	
TWO STAGE VISTA	
S/N B531E1666↔S/N E008E1546.....	10-22
H28.00-32.00F (H620FS-700F/FS)	
S/N E008E1547⇒.....	10-24
TWO STAGE VISTA	
⇒S/N B531E1665.....	10-20
LIFTING BRACKET	
TIER I ENGINE.....	2-70
TIER II ENGINE.....	2-72

TABLE OF CONTENTS (Continued)

DESCRIPTION	PAGE
L (continued)	
LIGHT BAR AND MOUNT	
TWIST LOCK.....	4-208
LIGHTS.....	4-184
M	
MAST	
H20.00-25.00F (H440FS-550F/FS)	
TWO STAGE VISTA	10-2
H28.00-32.00F (H620-700F/FS)	
TWO STAGE VISTA	10-6
MODULATOR VALVE	
⇒S/N E008E01910Z	5-30
O	
OIL COOLER AND ATTACHING PARTS	
S/N E008E01886Z⇔S/N E008E02041C.....	9-18
S/N E008E02042C⇒.....	9-20
OIL COOLER LUBE	
TIER I ENGINE	2-50
OIL FILLER	
TIER II ENGINE.....	2-54
OIL FILTER AND COOLER	
TIER II ENGINE.....	2-52
OIL LEVEL GAUGE	
TIER I ENGINE	
H20.00-32.00F	2-44
H20.00-32.00FS.....	2-46
TIER II ENGINE.....	2-48
OIL PAN	
TIER II ENGINE	
S/N E008E01985B⇒.....	2-138
OIL PUMP	
TIER II ENGINE	
S/N E008E01985B⇒.....	2-140
OPERATOR COMPARTMENT	
ELECTRICAL COMPONENTS	
TIER II ENGINE	
S/N E008E01886Z⇔S/N E008E01984B.....	4-86
S/N E008E01985B⇒ D/B 10/2003.....	4-142
S/N E008E01985B⇒ INC. 1979.....	4-90
SHEET 1 OF 3.....	1-20
SHEET 2 OF 3.....	1-24
SHEET 3 OF 3.....	1-28
OUTPUT SHAFT	
S/N E008E01911Z⇒.....	5-12
OUTPUT YOKE.....	5-11

TABLE OF CONTENTS (Continued)

DESCRIPTION	PAGE
P	
PARK BRAKE	
⇒S/N E008E01984B	6-50
WET BRAKE	
S/N E008E01985B⇒.....	6-52
PARK BRAKE SOLENOID VALVE	
ATTACHING PARTS.....	9-108
PARK BRAKE SWITCH	
S/N E008D1582⇒, S/N E008E1656⇒.....	4-188
PARK BRAKE VALVE	
⇒S/N E008D1581	8-46
PENDULAR TWIST LOCK	
S/N E008E1811⇒.....	11-38
PILOT VALVE	9-48
ATTACHING PARTS	
⇒S/N E008D1581, ⇒S/N E008E1655	9-106
PARK BRAKE	
⇒S/N E008D1581, ⇒S/N E008E1655	9-63
PISTON AND CONNECTING ROD	
TIER II ENGINE	
S/N E008E01985B⇒.....	2-122
PLATFORM	
OPERATOR COMPARTMENT.....	1-4
PRESSURE REDUCING VALVE	
ATTACHING PARTS	
⇒S/N E008E01723.....	9-100
S/N E008E1724↔S/N E008E01984B.....	9-104
PARK BRAKE	
⇒S/N E008E01984B.....	9-62
PILOT CIRCUIT	
⇒S/N E008E01984B.....	9-61
PRESSURE SWITCH	
⇒S/N E008D1581, ⇒S/N E008E1655	4-187
R	
RADIATOR AND FAN	2-98
RADIATOR PLUMBING	
TIER II ENGINE	2-92
RELIEF VALVE	
ATTACHING PARTS	
S/N E008D1518↔S/N E008D01984B, S/N E008E1544↔S/N E008E01984B.....	9-112
⇒S/N E008D1614, ⇒S/N E008E1664	9-110
EXTENDABLE ATTACHMENT	
⇒S/N E008E1810	11-56
S/N E008E01985B⇒.....	9-64
SLEWING CYLINDER	
⇒S/N E008E1810	11-58
TILT CYLINDER.....	9-72
TWIST LOCK AND EXTENDABLE ATTACHMENT CYLINDER	
⇒S/N E008E1810	11-57
RETURN MANIFOLD	
ATTACHING PARTS	

TABLE OF CONTENTS (Continued)

DESCRIPTION	PAGE
R (continued)	
SHEET 1 OF 2 ⇒S/N E008E01984B	9-92
SHEET 2 OF 2 ⇒S/N E008E01984B	9-96
ROCKER LEVERS TIER II ENGINE S/N E008E01985B⇒.....	2-132
S	
SEAT ASSEMBLY HIGH BACK KAB PENDING PER ECN 68229-14⇒.....	1-50
KAB ⇒PENDING PER ECN 68229-14	1-48
SERVICE BRAKE ⇒S/N E008E01984B	6-44
SHIFT LEVER ⇒S/N E008E01865Y	5-56
SHUTTLE VALVE	8-50
ATTACHING PARTS ⇒S/N E008E01984B.....	9-80
⇒S/N E008E01984B	9-73
SIDE-SHIFT CARRIAGE.....	12-12
SIDE-SHIFT CYLINDER	12-26
DEDICATED CARRIAGE.....	12-28
SLEWING CYLINDER EXTENDABLE ATTACHMENT S/N E008E1811⇒.....	11-43
SLEWING CYLINDER AND ATTACHING PARTS ⇒S/N E008E1810.....	11-40
SOLENOID VALVE	9-88
PARK BRAKE ⇒S/N E008D1582, ⇒S/N E008E1656	9-65
STARTER MOTOR TIER I AND TIER II ENGINES ⇒S/N E008E01984B.....	4-180
TIER II ENGINE S/N E008E01985B⇒.....	4-182
STEERING	7-8
STEERING AXLE	7-2
STEERING CONTROL VALVE.....	7-14
STEERING CYLINDER.....	7-12
STROBE LIGHT	12-36
SUSPENSION SEAT GRAMMER HIGH BACK SHEET 1 OF 2	1-52
SHEET 2 OF 2	1-56

TABLE OF CONTENTS (Continued)

DESCRIPTION	PAGE
T	
TANK AND FILTER.....	9-36
THERMOSTAT	
TIER I ENGINE.....	2-64
TIER II ENGINE.....	2-66
THERMOSTAT HOUSING	
TIER I ENGINE.....	2-62
THROTTLE LINKAGE	
TIER I ENGINE.....	3-42
THROTTLE PEDAL	
TIER I ENGINE.....	3-48
THROTTLE PEDAL ASSEMBLY	
ELECTRONIC	
TIER II ENGINE.....	3-50
TILT CYLINDER.....	9-70
CAB TILT	
⇒S/N E008D1594, ⇒S/N E008E1676.....	1-8
S/N E008D1595⇔S/N E008D1618, S/N E008E1677⇔S/N E008E1699.....	1-10
S/N E008D1618⇒, S/N E008E1699⇒.....	1-12
TILT HYDRAULIC	
⇒S/N E008E01984B.....	9-66
S/N E008E01985B⇒.....	9-68
TIRE AND WHEEL.....	12-3
H28.00-32.00F (H620-700F/FS).....	12-6
TORQUE CONVERTER.....	5-8
TORQUE CONVERTER AND OIL COOLER FITTINGS	
TIER II ENGINE.....	2-94
TRANSMISSION	
ATTACHING PARTS	
S/N E008D1680⇔S/N E008E01910Z, S/N E008E1781⇔S/N E008E01910Z.....	5-44
⇒S/N E008E01910Z.....	5-38
ATTACHING PARTS COOLING AND FILTER.....	5-40
TRANSMISSION ATTACHING PARTS	
TIER II ENGINE	
H20.00-32.00F (H550-700F)	
S/N E008E01911Z⇒.....	5-46
H25.00-32.00FS (H440FS-700FS)	
S/N E008E01985B⇒.....	5-48
TRANSMISSION CONTROL VALVE	
⇒S/N E008E01865Y.....	5-58
TRANSMISSION CONTROLLER	
TIER I ENGINE.....	4-77
TIER II ENGINE.....	4-78
TRANSMISSION COOLING	
OPTIONAL	
S/N E008D1680⇒, S/N E008E1781⇒.....	5-54
TRANSMISSION HOUSING.....	5-2
TREADLE VALVE	
⇒S/N E008E01984B.....	8-42
S/N E008E01985B⇒.....	8-44
TURBOCHARGER MOUNT	
TIER I ENGINE.....	2-18

TABLE OF CONTENTS (Continued)

DESCRIPTION	PAGE
T (continued)	
TIER II ENGINE	
S/N E008E01985B⇒.....	2-20
TURBOCHARGER PLUMBING	
TIER I ENGINE.....	2-22
TIER II ENGINE.....	2-24
TWIST LOCK	
EXTENDABLE ATTACHMENT	
S/N E008E1811⇒.....	11-36
FIXED ATTACHMENT WITHOUT SLEWING	
⇒S/N E008E1810.....	11-32
TWO-SPEED LIFT VALVE	
S/N E008D1524⇒.....	9-24
V	
VALVE	
EXTENDABLE ATTACHMENT	
S/N E008E1811⇒.....	11-62
RELAY.....	8-48
VALVE COVER	
TIER I ENGINE.....	2-14
TIER II ENGINE.....	2-16
VALVE INCHING	
⇒S/N E008D1588, ⇒S/N E008E1656.....	8-52
S/N E008D1589↔S/N E008E01865, S/N E008E01656↔S/N E008E01865.....	8-54
VALVE TAPPET	
TIER II ENGINE	
S/N E008E01985B⇒.....	2-126
VIBRATION DAMPER	
TIER II ENGINE	
S/N E008E01985B⇒.....	2-154
W	
WATER INLET CONNECTION	
TIER I ENGINE.....	2-110
TIER II ENGINE.....	2-112
WATER OULET CONNECTION	
TIER I ENGINE.....	2-114
WATER OUTLET CONNECTION	
TIER II ENGINE.....	2-116
WATER PUMP	
TIER I ENGINE.....	2-118
TIER II ENGINE.....	2-120
WEAR PLATE	
EXTENDABLE ATTACHMENT	
⇒S/N A660E1541.....	11-66
S/N A660E1542↔S/N E008E1810.....	11-68
S/N E008E1811⇒.....	11-70
WINDSCREEN WASHER.....	1-36
WIRE HARNESS	

TABLE OF CONTENTS (Continued)

DESCRIPTION	PAGE
W (continued)	
AUTOSHIFT ADAPTER	
S/N E008E01866Y⇒.....	4-158
AUTOSHIFT CONTROLLER	
⇒S/N E008E1865Y.....	4-156
AUTOSHIFT FUSE PANEL	
TIER 1 ENGINE	
S/N E008E01911Z↔S/N E008E01984B.....	4-162
TIER I ENGINE	
⇒S/N E008E01910Z.....	4-160
TIER II ENGINE	
S/N E008E01866Y⇒.....	4-164
BACK-UP ALARM.....	4-41
BRAKE INDICATOR.....	4-202
BRAKE TEMPERATURE SWITCH	
D/B 10/2003⇒.....	4-38
CONTAINER ATTACHMENT	
LIGHT SWITCH	
D/B 10/2003⇒.....	4-194
LIGHTS	
D/B 10/2003⇒.....	4-196
CONTROL VALVE	
D/B 10/2003⇒.....	4-36
DIAGNOSIS.....	4-197
ENGINE	
PENDING PER ECN 68204-25⇒.....	4-52
⇒S/N E008E01865.....	4-42
⇒S/N E008E01866Y, ⇒S/N E008E01912Z.....	4-44
TIER II	
S/N E008E01991B⇒.....	4-50
ENGINE COMPARTMENT	
CHASSIS (TIER II)	
S/N E008E01991B⇒.....	4-32
⇒S/N E008E01866Y, ⇒S/N E008E01984B.....	4-28
⇒S/N E008E1773.....	4-24
S/N E008E1774↔S/N E008E01865Y.....	4-26
TIER II	
S/N E008E01985B↔S/N E008E01990B.....	4-30
GAUGE	
TIER I AND TIER II ENGINE.....	4-134
TIER II.....	4-199
GEAR SHIFT	
S/N E008E1811↔S/N E008E01865Y.....	4-104
HYDRAULIC OIL COOLER.....	4-204
IDLE VALIDATION SWITCH.....	4-206
LIGHTING SWITCH.....	4-150
LOCKING AND LIFT CONTROL	
D/B 10/2003⇒.....	4-154
S/N E008E1811⇒ D/B 10/2003.....	4-152
LOWERING INTERRUPT.....	4-192
MAIN LIGHT.....	4-191

TABLE OF CONTENTS (Continued)

DESCRIPTION	PAGE
W (continued)	
MODULE	
WITH EC CAB	
⇒S/N E008E1810	4-110
S/N E008E1811⇒	4-111
WITH STANDARD CAB	
⇒S/N E008E1810	4-112
S/N E008E1811⇒	4-113
OPERATOR COMPARTMENT	
⇒S/N E008D1515, S/N E008E1522↔S/N E008E1810	4-122
TIER 1 ENGINE	
S/N E008E01781W↔S/N E008E01984B.....	4-126
TIER I AND TIER II ENGINE.....	4-124
TIER II ENGINES	
D/B 10/2003⇒ S/N E008E01990B	4-130
S/N E008E01985B⇒ D/B 10/2003	4-128
S/N E008E01991B⇒	4-132
PARK BRAKE	
⇒S/N E008E01865	4-94
S/N E008E01866⇒	4-96
POWER SUPPLY	4-195
PRESSURE SWITCH	
LIGHTS	4-151
RADIATOR COOLANT LEVEL SWITCH	4-203
REAR LIGHT	4-190
SENSOR	
⇒S/N E008E1865Y.....	4-54
SOLENOID VALVE	
⇒S/N E008E1810	4-34
S/N E008E1810⇒ D/B 10/2003	4-35
STEERING POD	
TIER I AND TIER II ENGINE.....	4-135
TIER II ENGINES	
S/N E008E01985B⇒	4-136
SWITCH	
EC CAB	
D/B 10/2003⇒	4-120
S/N E008E1811⇒ D/B 10/2003	4-118
WITH STANDARD CAB	
⇒S/N E008E01984B	4-114
SWITCH AND RELAY	4-200
SWITCHES	
WITH STANDARD CAB	
S/N E008E01985B⇒	4-116
TRANSMISSION	
⇒S/N E008E1865Y.....	4-40
TRANSMISSION AND ATTACHMENT	
⇒S/N E008E1810	4-102
TRANSMISSION CONTROL	
PENDING PER ECN 68229-14⇒	4-148
TIER I ENGINE	4-138

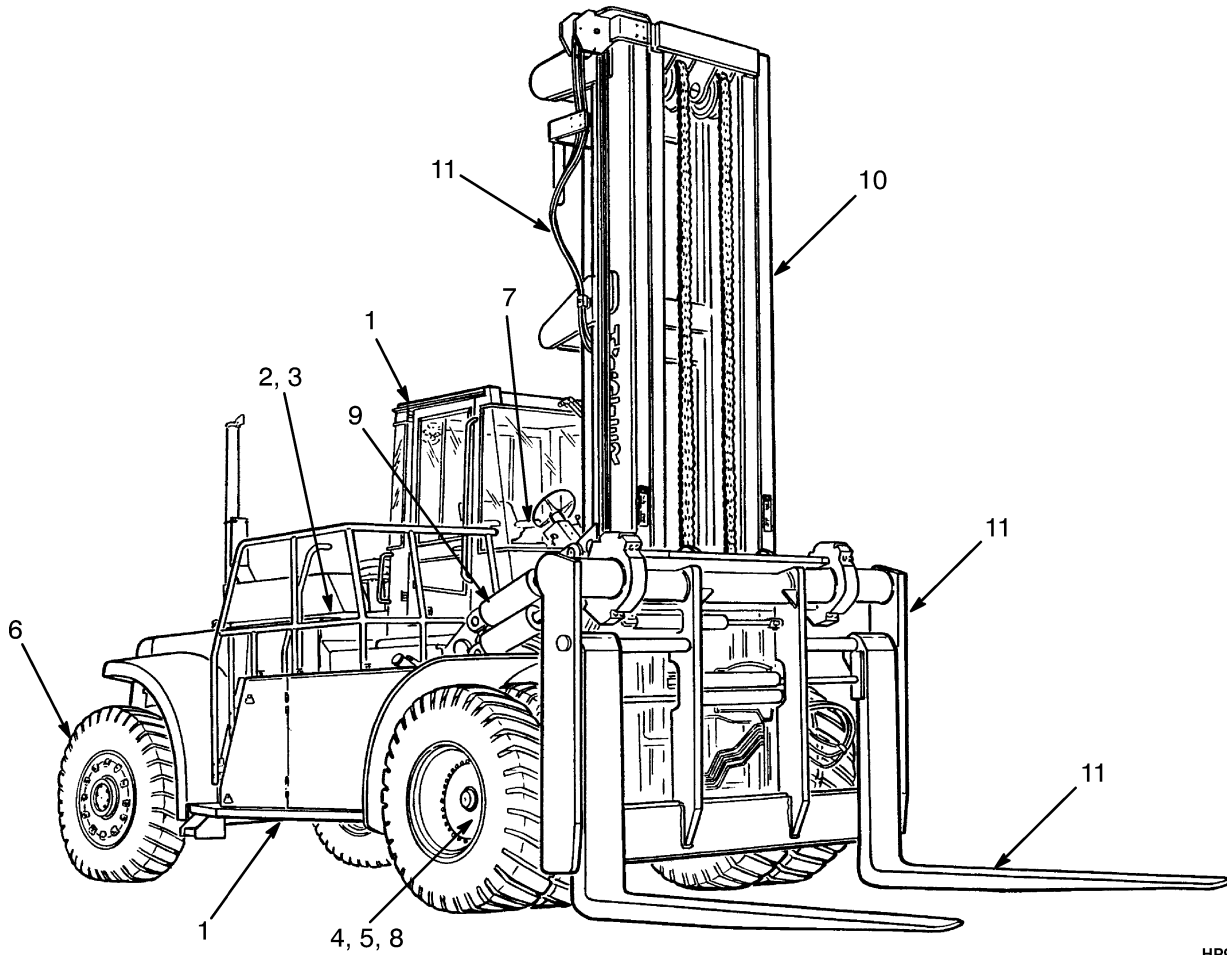
TABLE OF CONTENTS (Continued)

DESCRIPTION	PAGE
W (continued)	
TIER II ENGINE	
S/N E008E01911Z⇒	4-146
TIER II ENGINES	
S/N E008E01886Z↔S/N E008E01910Z	4-140
WASH PUMPS	4-193
WITH EC CAB	4-106
CONTAINER ATTACHMENT	
D/B 10/2003⇒	4-100
⇒S/N E008E1810	4-98
S/N E008E1811⇒ D/B 10/2003	4-99
WITH STANDARD CAB	4-108
WORK LIGHTS	4-189
WIRE HARNESS (ENGINE)	
TIER II	
S/N E008E01913Z↔S/N E008E01984B	4-46
S/N E008E01985B↔S/N E008E01990B	4-48
WIRING ACCESSORIES	
TIER II ENGINE	
S/N E008E01985B⇒	4-212

SECTION 1
FRAME

DESCRIPTION	PAGE
COUNTERWEIGHT	1-46
FLOOR PLATES AND COVERS	
H20.00-32.00F, H550-700F	1-38
H20.00-32.00FS, H440-700FS	1-42
GENERAL TRUCK	1-2
HAND PUMP	
OPERATOR COMPARTMENT	
⇒S/N E008E1592	1-16
S/N E008E1593⇒	1-18
HEATER	1-32
HEATER CONTROL	1-35
HOOD	
H20.00-32.00FS, H440-700FS	1-66
HOOD AND LINKAGE	
H20.00-32.00F, H550-700F	
TIER I ENGINE	1-58
HOOD LINKAGE	
H20.00-32.00F, H550-700F	
TIER II ENGINE	1-62
LABELS	1-68
LATCH	
HYDRAULIC	1-14
OPERATOR COMPARTMENT	
SHEET 1 OF 3	1-20
SHEET 2 OF 3	1-24
SHEET 3 OF 3	1-28
PLATFORM	
OPERATOR COMPARTMENT	1-4
SEAT ASSEMBLY	
HIGH BACK	
KAB	
PENDING PER ECN 68229-14⇒	1-50
KAB	
⇒PENDING PER ECN 68229-14	1-48
SUSPENSION SEAT	
GRAMMER HIGH BACK	
SHEET 1 OF 2	1-52
SHEET 2 OF 2	1-56
TILT CYLINDER	
CAB TILT	
⇒S/N E008D1594, ⇒S/N E008E1676	1-8
S/N E008D1595↔S/N E008D1618, S/N E008E1677↔S/N E008E1699	1-10
S/N E008D1618⇒, S/N E008E1699⇒	1-12
WINDSCREEN WASHER	1-36

GENERAL TRUCK (Figure 1-1)



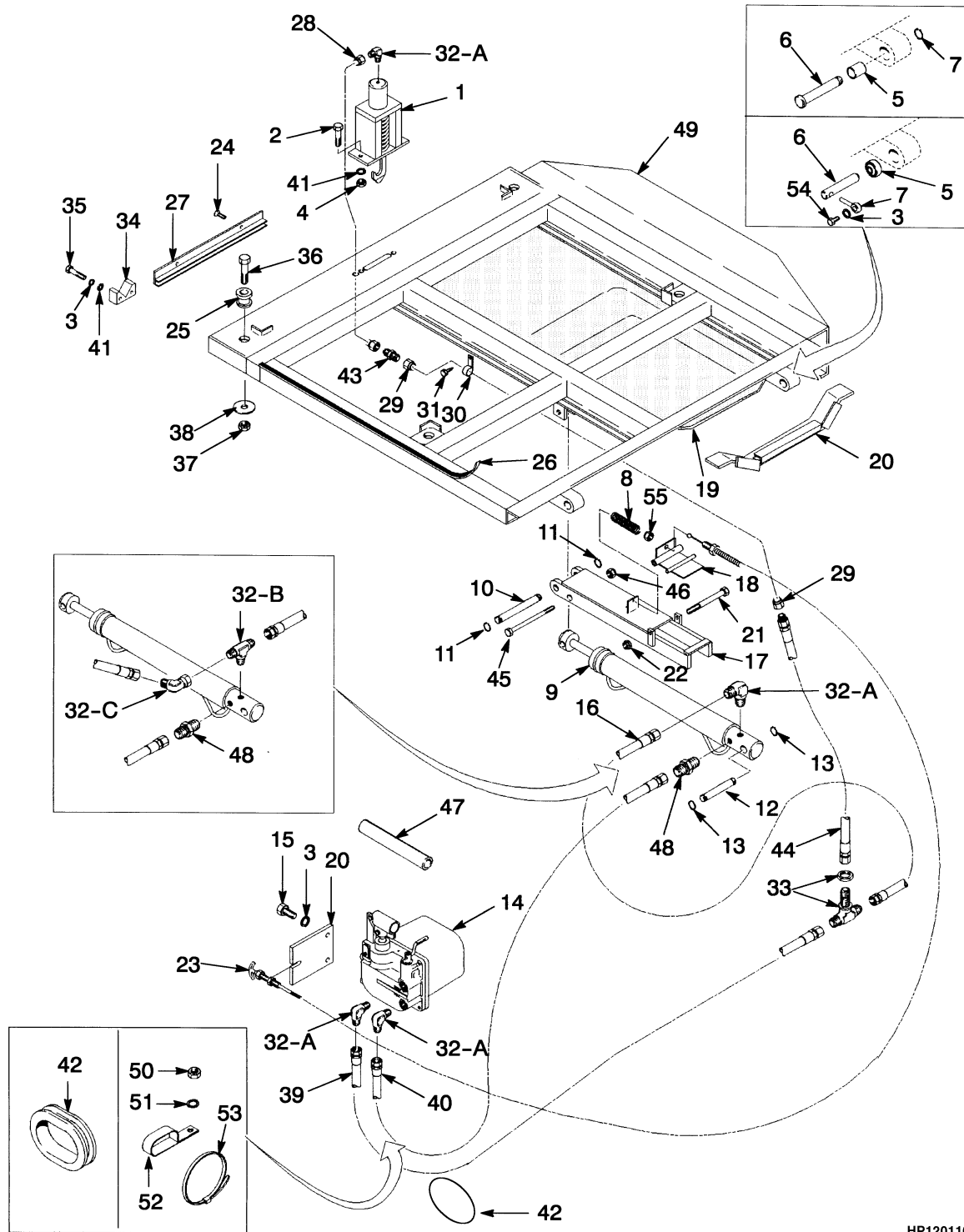
HP990025

ITEM	PART NO.	DESCRIPTION	QTY
1	FRAME (☞ Figure 1-2)	1
2	ENGINE	1
3	FUEL SYSTEM (☞ Figure 3-1)	1
4	ELECTRICAL SYSTEM (☞ Figure 4-1)	1
5	TRANSMISSION (☞ Figure 5-1)	1
6	DRIVE AXLE (☞ Figure 6-1)	1
7	STEERING SYSTEM (☞ Figure 7-1)	1
8	BRAKE SYSTEM (☞ Figure 8-1)	1
9	HYDRAULIC SYSTEM (☞ Figure 9-1)	1
10	MAST-TWO STAGE LIMITED FREE-LIFT (☞ Figure 10-1)	1
11	ATTACHMENTS (☞ Figure 11-1)	1
12	OPTIONS (☞ Figure 10-1)	1
13	NUMERICAL INDEX	1

HYSTER

NOTES

PLATFORM (Figure 1-2) OPERATOR COMPARTMENT



HP120110

**PLATFORM
OPERATOR COMPARTMENT****KEY:****A: Center Compartment (H20.00-32.00F, H550-700F)****B: Left Compartment (H20.00-32.00F, H550-700F)****C: Center Compartment (H440-700FS)****D: Left Compartment (H440-700FS)**

ITEM	PART NO.	DESCRIPTION	QTY			
			A	B	C	D
1	1335659	Latch (Hydraulic) (☞ Figure 1-6)	1	1	1	1
2	16815	Capscrew.....	2	2	2	2
3	gq 15156	Lockwasher.....	12	12	12	12
3	hr 15156	Lockwasher.....	8	8	8	8
4	156133	Nut.....	2	2	2	2
5	eo 1333065	Bushing.....	2	2	2	2
5	fp 192970	Bushing.....	2	2	2	2
6	eo 1335661	Pin	2	2	2	2
6	fp 1354548	Pin	2	2	2	2
7	eo 131358	Snap Ring.....	2	2	2	2
7	fp 195566	Anchor	2	2	2	2
8	1359434	Spring	1	1	1	1
9	iu 1335658	Tilt Cylinder (☞ Figure 1-3)	1	1	1	1
9	jv 1367339	Tilt Cylinder (☞ Figure 1-4)	1	1	1	1
9	kw 816345	Tilt Cylinder (☞ Figure 1-5)	1	1	1	1
10	1336921	Pin	1	1	1	1
11	1194630	Snap Ring.....	2	2	2	2
12	1336920	Pin	1	1	1	1
13	131357	Snap Ring.....	2	2	2	2
14	s 1335657	Hydraulic Pump (☞ Figure 1-7)	1	1	1	1
14	t 816344	Hydraulic Pump (☞ Figure 1-8)	1	1	1	1
15	16805	Capscrew.....	2	2	2	2
16	139721	Hose	1	1
17	1359435	Link	1	1	1	1
18	1344284	Latch.....	1	1	1	1
19	1336907	Sound Liner	2	2	2	2
20	hr 1359444	Support.....	2	2	2	2
21	18547	Capscrew.....	1	1	1	1
22	192077	Nut.....	1	1	1	1
23	1336910	Cable (Control)	1	1
23	1353946	Cable (Control)	1	1
24	18337	Capscrew.....	4	4	4	4
25	1325519	Mount (Cab).....	4	4	4	4
26	178901	Foam Tape.....	AR	AR	AR	AR
27	1331886	Bracket.....	2	2	2	2
28	1337259	Tube.....	1	1	1	1
29	1337260	Tube.....	1	1	1	1
30	124359	Clamp	4	4	4	4
31	277279	Screw.....	4	4	4	4
32	14500	Fitting (A)	1	1	3	3
32	14602	Fitting (B)	1	1
32	16556	Fitting (D).....	2	2	2	2
32	16997	Fitting (C).....	1	1
33	16472	Fitting.....	1	1
34	1336090	Support.....	2	2	2	2

PLATFORM OPERATOR COMPARTMENT

ITEM	PART NO.	DESCRIPTION	QTY			
			A	B	C	D
35	16816	Capscrew.....	4	4	4	4
36	a 292535	Capscrew.....	4	4	4	4
36	b 292538	Capscrew.....	4	4	4	4
37	300937	Locknut.....	4	4	4	4
38	a 300939	Washer.....	4	4	4	4
38	300939	Washer.....	4	4	4	4
38	b 816574	Spacer.....	4	4	4	4
39	1337300	Hose.....	1	1
39	146236	Hose.....	1	1
40	146236	Hose.....	1	1
40	265325	Hose.....	1	1
41	15176	Washer.....	6	6	6	6
42	1337281	Grommet.....	1	1	1	1
43	14689	Fitting.....	1	1	1	1
44	1339532	Hose.....	1	1	1	1
45	18486	Capscrew.....	1	1	1	1
46	169874	Nut.....	1	1	1	1
47	1360658	Handle (Pump).....	1	1
47	815996	Handle (Pump).....	1	1
47	816346	Grip.....	1	1
48	14668	Fitting.....	1	1	1	1
49	cl 1331920	Platform.....	1
49	dm 1466330	Platform.....	1
49	n 1507767	Platform.....	1
49	cl 1331921	Platform.....	..	1
49	n 1507768	Platform.....	..	1
49	cl 1349783	Platform.....	1	..
49	dm 1466327	Platform.....	1	..
49	n 1514838	Platform.....	1	..
49	x 1349784	Platform.....	1
49	n 1514839	Platform.....	1
49	1515579	Platform.....	1
50	15056	Nut.....	1	1
51	15134	Washer.....	1	1
52	128408	Clamp.....	2	2
53	114312	Strap Clamp.....	2	2
54	fp 16598	Capscrew.....	2	2	2	2
55	15026	Nut.....	1	1	1	1

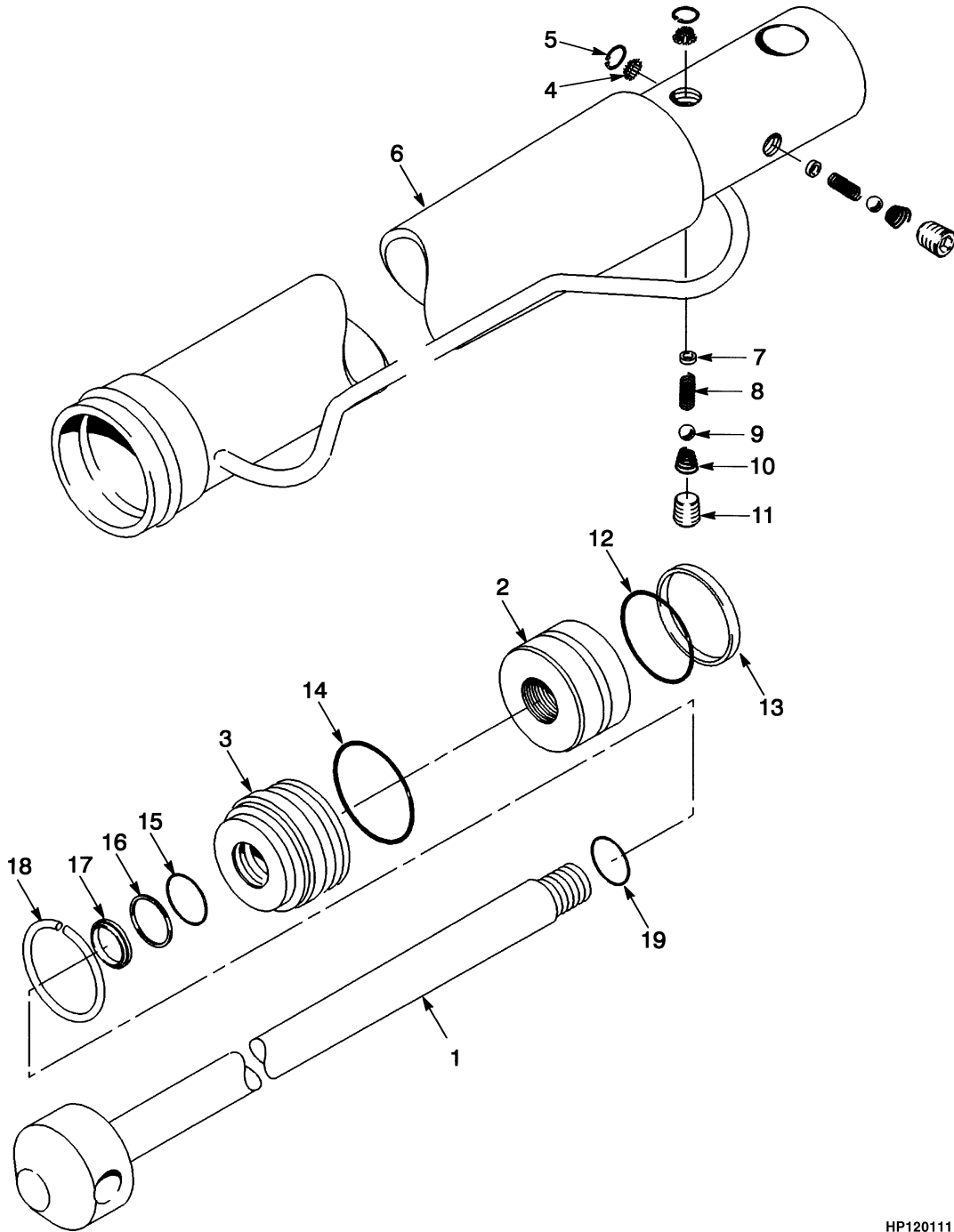
FOOTNOTES:

- a** With EC Cab
- b** With Standard Cab
- c** ⇒ S/N E008D-01701X
- d** S/N E008D-01701X⇔S/N E008E-01888Z
- e** ⇒ S/N E008D-1514
- f** S/N E008D-1515 ⇒
- g** ⇒ S/N E008D-1519
- h** S/N E008D-1520 ⇒
- i** ⇒ S/N E008D-1594
- j** S/N E008D-1595⇔S/N E008D-1618
- k** S/N E008D-1618 ⇒

**PLATFORM
OPERATOR COMPARTMENT**

l ⇒ S/N E008E-01749W
m S/N E008E-01749W⇔S/N E008E-01888Z
n S/N E008E-01889Z ⇒
o ⇒ S/N E008E-1537
p S/N E008E-1538 ⇒
q ⇒ S/N E008E-1542
r S/N E008E-1543 ⇒
s ⇒ S/N E008E-1592
t S/N E008E-1593 ⇒
u ⇒ S/N E008E-1676
v S/N E008E-1677⇔S/N E008E-1699
w S/N E008E-1699 ⇒
x ⇒ S/N E008E-1888Z

TILT CYLINDER (Figure 1-3) CAB TILT (⇒S/N E008D1594, ⇒S/N E008E1676)

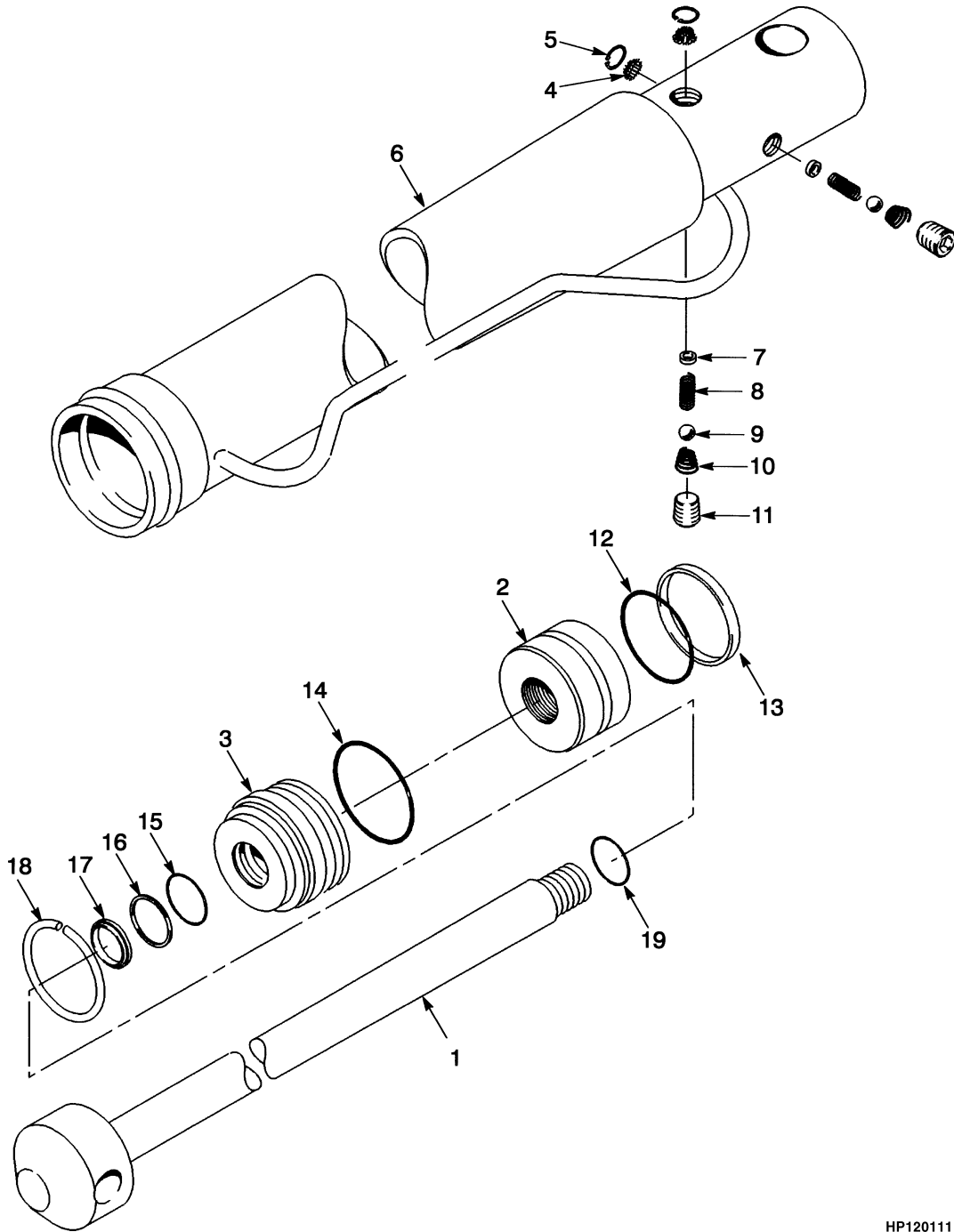


HP120111

**TILT CYLINDER
CAB TILT
(⇒S/N E008D1594, ⇒S/N E008E1676)**

ITEM	PART NO.	DESCRIPTION	QTY
	1335658	Tilt Cylinder.....	1
1	1338719	Rod.....	1
2	1338720	Piston	1
3	1338721	Gland.....	1
4	Screen.....	2
5	Retaining Ring.....	2
6	Shell	1
7	Screw (Lock)	2
8	Spring.....	2
9	Ball	2
10	Spring.....	2
11	Plug	2
12	O-Ring	1
13	Seal	1
14	O-Ring	1
15	O-Ring	1
16	Back-Up Ring	1
17	Wiper.....	1
18	Retaining Ring.....	1
19	O-Ring	1
	1338723	Seal Kit (Includes Items 4-5, 12-19)	1

TILT CYLINDER (Figure 1-4) CAB TILT (S/N E008D1595↔S/N E008D1618, S/N E008E1677↔S/N E008E1699)

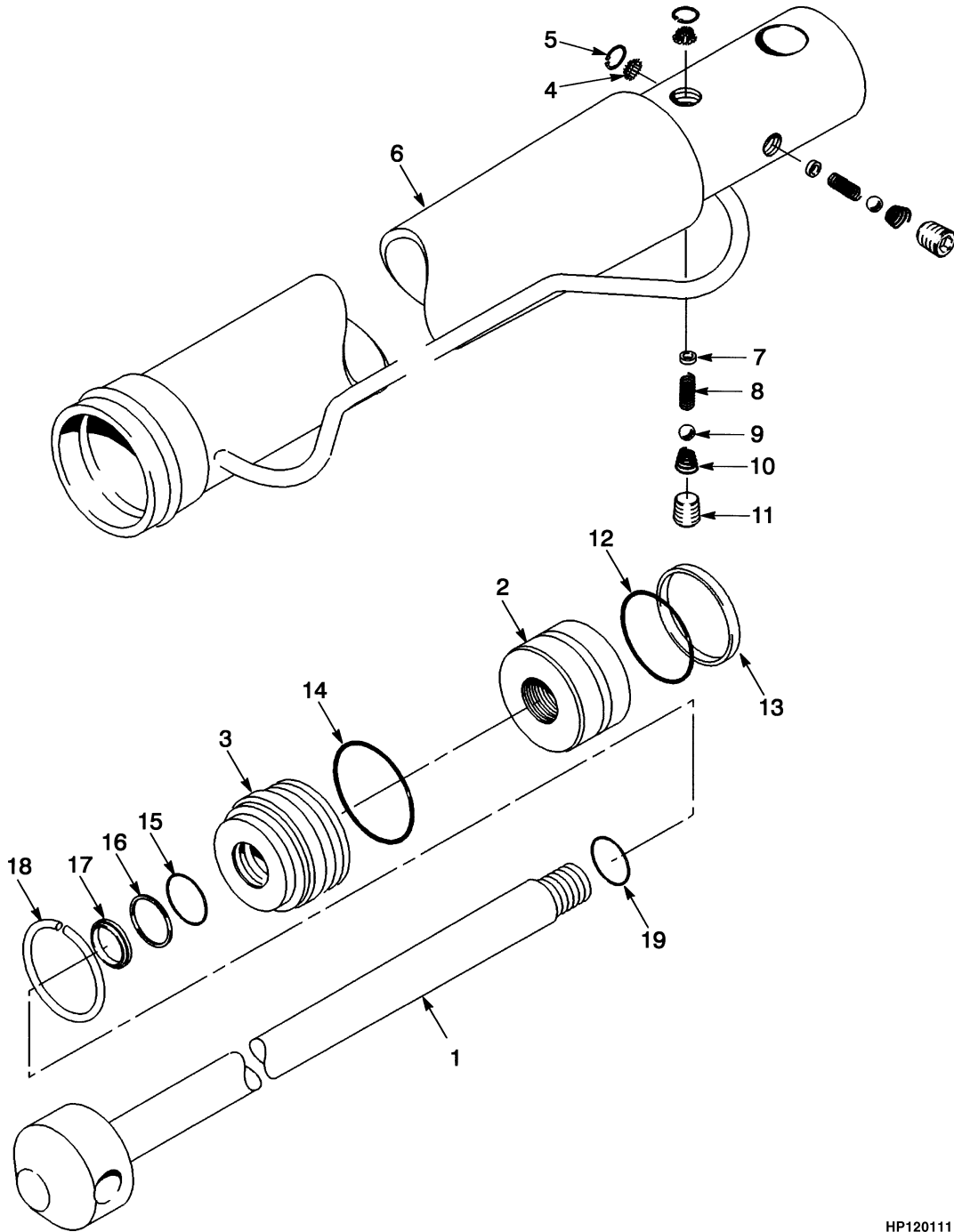


HP120111

**TILT CYLINDER
CAB TILT
(S/N E008D1595↔S/N E008D1618, S/N E008E1677↔S/N E008E1699)**

ITEM	PART NO.	DESCRIPTION	QTY
	1367339	Tilt Cylinder.....	1
1	Rod.....	1
2	Piston	1
3	Gland.....	1
4	Spring.....	2
5	Retaining Ring.....	2
6	Shell	1
7	Screw (Lock)	2
8	Spring.....	2
9	Ball	2
10	Spring.....	2
11	Plug	2
12	Seal	1
13	O-Ring	1
14	O-Ring	1
15	O-Ring	1
16	Back-Up Ring	1
17	Wiper.....	1
18	Ring.....	1
19	O-Ring.....	1
	1338723	Seal Kit (Includes Items 4-5, 12-19)	1

TILT CYLINDER (Figure 1-5) CAB TILT (S/N E008D1618⇒, S/N E008E1699⇒)

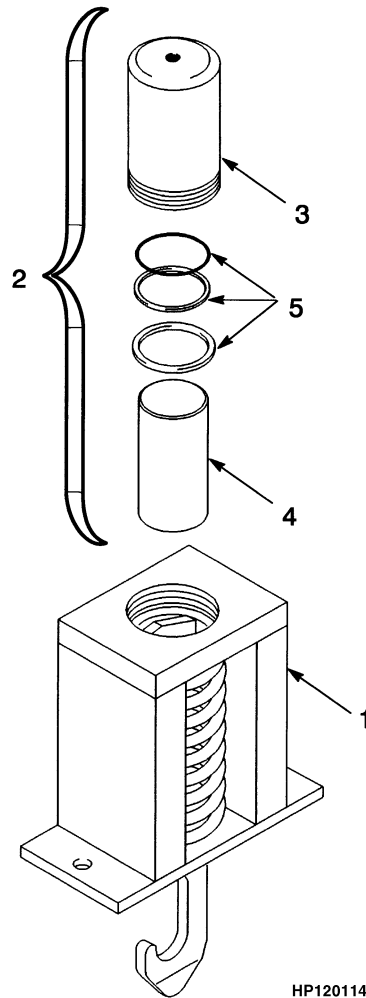


HP120111

**TILT CYLINDER
CAB TILT
(S/N E008D1618⇒, S/N E008E1699⇒)**

ITEM	PART NO.	DESCRIPTION	QTY
	816345	Tilt Cylinder.....	1
1	Rod.....	1
2	1338720	Piston	1
3	1452221	Gland.....	1
4	Screen.....	2
5	Retaining Ring.....	2
6	Shell	1
12	Seal.....	1
13	O-Ring.....	1
14	O-Ring.....	1
15	O-Ring.....	1
16	Back-Up Ring	1
17	Wiper.....	1
18	Ring.....	1
19	O-Ring.....	1
	1452222	Repair Kit (Includes Items 4-5, 12-19).....	1

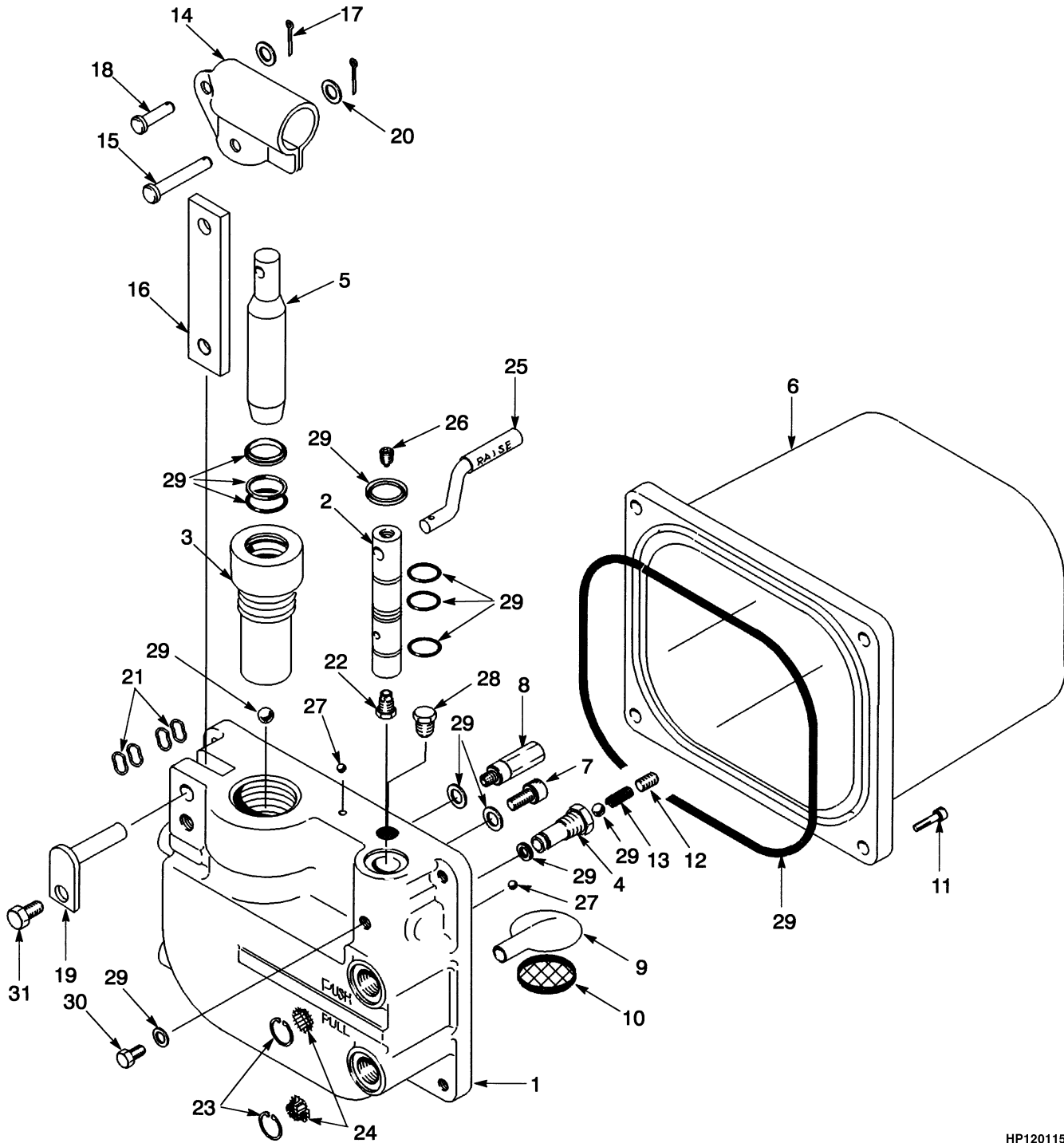
LATCH (Figure 1-6) HYDRAULIC



HP120114

ITEM	PART NO.	DESCRIPTION	QTY
	1335659	Latch (Hydraulic).....	1
1	1338724	Latch.....	1
2	1347905	Cylinder Assembly.....	1
3	1338875	Cylinder Assembly	1
4	Plunger.....	1
5	O-Ring.....	1
5	Back-Up Ring.....	1
5	Wiper.....	1
	1338877	Seal Kit (Includes Item 5)	1

HAND PUMP (Figure 1-7) OPERATOR COMPARTMENT (⇒S/N E008E1592)

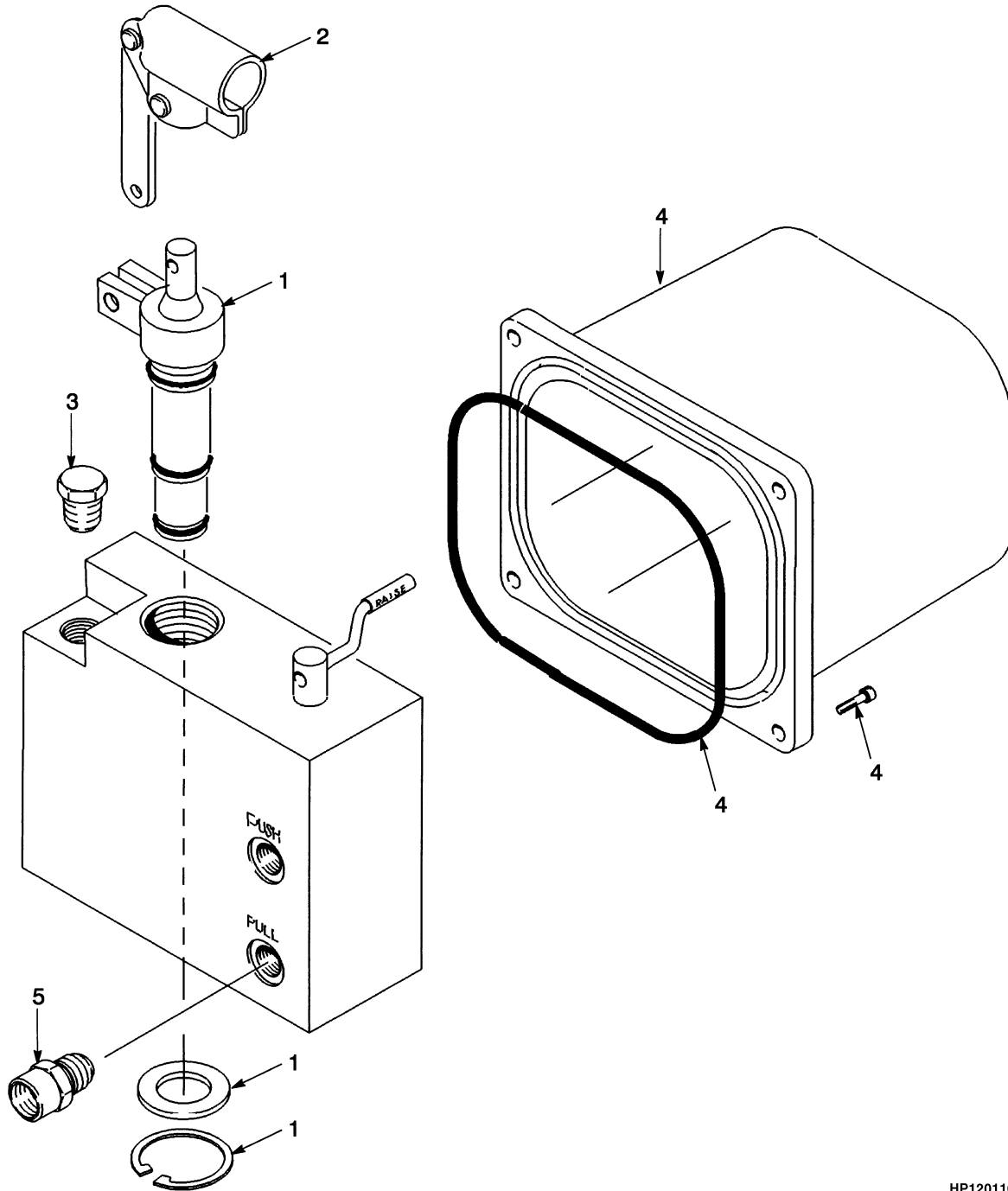


HP120115

**HAND PUMP
OPERATOR COMPARTMENT
(⇒S/N E008E1592)**

ITEM	PART NO.	DESCRIPTION	QTY
	1335657	Hydraulic Pump	1
1	Body	1
2	1338691	Spool	1
3	Cylinder	1
4	1338692	Seat	1
5	1338693	Plunger	1
6	1338694	Reservoir	1
7	1338695	Plug	1
8	1338696	Relief Valve	1
9	1338697	Adapter (Inlet).....	1
10	1338698	Screen	1
11	1338699	Capscrew	4
12	1338700	Plug	1
13	1338701	Spring.....	1
14	1338702	Beam	1
15	1338703	Pin	1
16	1338704	Link.....	1
17	1338705	Cotter Pin	2
18	1338706	Pin	1
19	1338707	Pin	1
20	1338708	Washer	2
21	1338709	Washer	4
22	1338710	Fitting.....	1
23	1338711	Retaining Ring.....	2
24	1338712	Screen	2
25	1338713	Handle	1
26	1338714	Screw	1
27	1338715	Ball	7
28	1338716	Plug	1
29	1338676	Seal Kit.....	AR
30	1338717	Capscrew	1
31	1338718	Screw	1

HAND PUMP (Figure 1-8) OPERATOR COMPARTMENT (S/N E008E1593⇒)

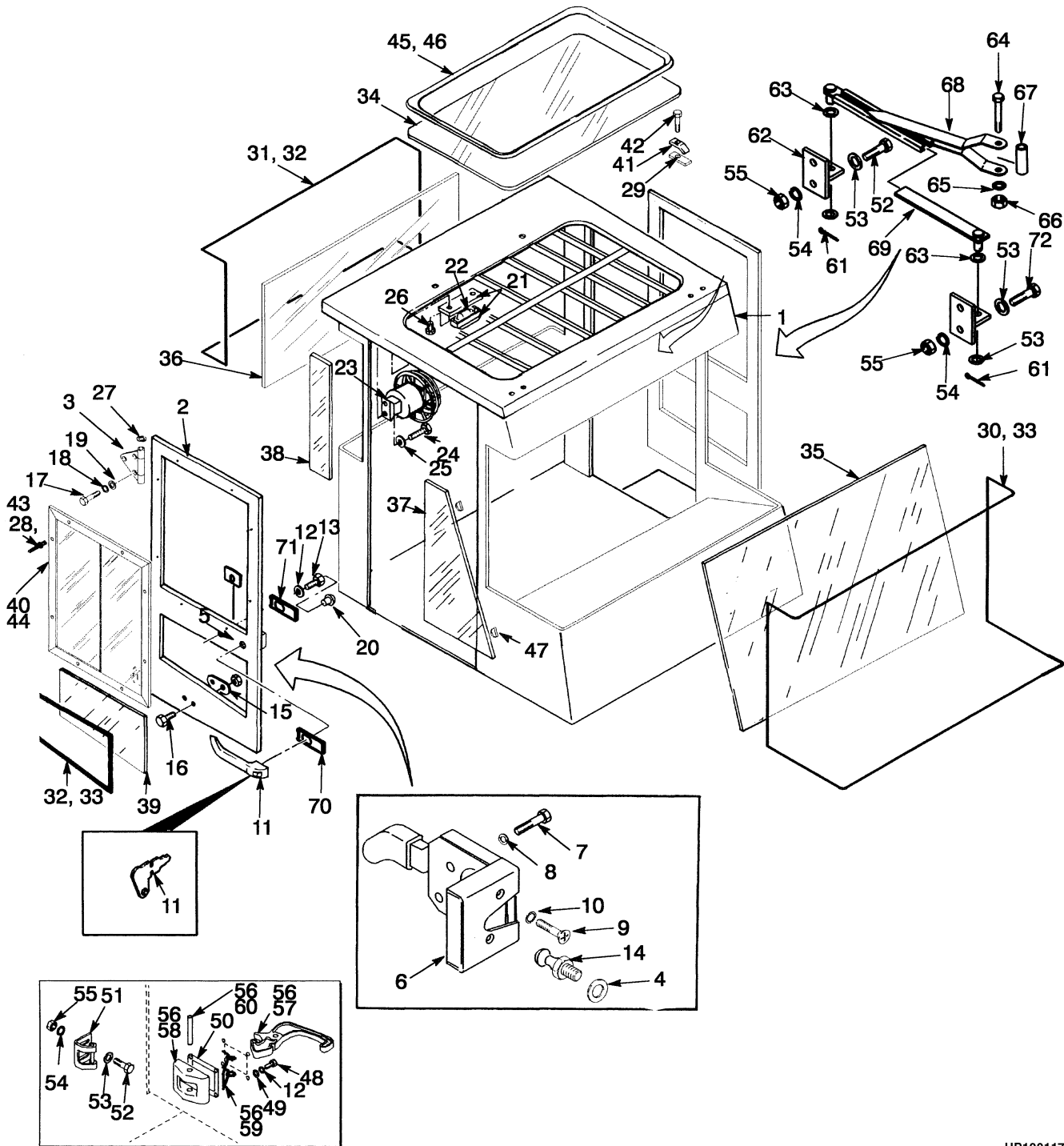


HP120116

**HAND PUMP
OPERATOR COMPARTMENT
(S/N E008E1593⇒)**

ITEM	PART NO.	DESCRIPTION	QTY
	816344	Hydraulic Pump	1
1	1452226	Cylinder Assembly (Insert)	1
2	1452227	Beam (Link Assembly)	1
3	1452228	Plug	1
4	1452229	Reservoir	1
5	1452230	Adapter	2

OPERATOR COMPARTMENT (Figure 1-9) SHEET 1 OF 3



HP120117

**OPERATOR COMPARTMENT
SHEET 1 OF 3****KEY:****A: Last Used on E8E-1750****B: First Used on E8E-1751**

ITEM	PART NO.	DESCRIPTION	QTY	
			A	B
1	1346460	Operator Compartment.....	1	..
1	1375947	Operator Compartment (With EC Cab)	1
1	1463263	Operator Compartment (With Standard Cab).....	..	1
2	1300995	Door (LH).....	1	..
2	1300996	Door (RH)	1	..
2	1377726	Door (LH).....	..	1
2	1377727	Door (RH)	1
3	1300978	Hinge (LH)	2	..
3	1300979	Hinge (RH).....	2	..
4	296423	Washer	2	2
5	302399	Nut	4	..
6	1309824	Door Handle (LH)	1	1
6	1312450	Door Handle (RH).....	1	1
7	302248	Screw.....	4	4
8	292679	Lockwasher.....	4	4
9	296464	Screw.....	4	4
10	296396	Washer	4	4
11	1319177	Door Handle	2	2
11	1360777	Key	1	1
12	292680	Lockwasher.....	2	6
13	302256	Screw.....	2	2
14	365344	Bolt	2	2
15	3047418	Plate	2	..
16	353144	Capscrew.....	4	..
17	1301705	Capscrew.....	12	..
18	1301707	Washer	12	..
19	1301706	Lockwasher.....	12	..
20	309666	Plug	2	2
21	1301254	Dome Light	1	1
22	1301256	Bulb	2
22	1307051	Bulb	2	..
23	1307755	Fan.....	1	1
23	134810	Terminal.....	1	1
23	181045	Connector.....	1	1
24	16750	Screw.....	4	4
25	15152	Lockwasher.....	4	4
26	302236	Screw.....	2	2
27	1301700	Bushing (Brass)	4	4
28	280472	Sealant	AR	AR
29	1342660	Strip	3	4
30	1346426	Seal (Front Window)	1	1
31	376064	Seal (Rear Window).....	1	1
32	376867	Seal (LH Window).....	1	1
32	376868	Seal (RH Window)	1	1
33	376922	Lock Strip.....	AR	AR
34	1346422	Window (With EC Cab).....	1	1

OPERATOR COMPARTMENT SHEET 1 OF 3

ITEM	PART NO.	DESCRIPTION	QTY	
			A	B
34	1463773	Window (With Standard Cab)	1
35	1346424	Glass (Front)	1	1
36	1301372	Glass (Rear)	1	1
37	1346425	Glass	2	2
38	1301374	Glass	2	2
39	1301375	Glass	2	2
40	ce 1311302	Window (RH)	1	..
40	ce 1324084	Latch	1	..
40	df 1375984	Window (RH)	1	1
40	df 1377704	Glass (Stationary)	1
40	df 1377703	Glass (Sliding)	1
40	df 1377702	Latch	1	1
40	df 1377271	Screw	4	4
40	ce 1311303	Window (LH)	1	..
40	ce 1324084	Latch	1	..
40	df 1375985	Window (LH)	1	1
40	df 1377704	Glass (Stationary)	1
40	df 1377703	Glass (Sliding)	1
40	df 1377702	Latch	1	1
40	df 1377271	Screw	4	4
41	1301184	Plate	4	4
42	302244	Screw	4	4
43	265817	Rivet	16	16
44	Glue (Silicone)	AR	AR
45	365337	Primer	AR	AR
46	318352	Seal	AR	AR
47	376840	Spacer	2	AR
48	292500	Capscrew	8
49	320156	Washer	8
50	1369496	Seal	2
51	b 1393748	Striker Plate (Center Mount)	2
51	1393748	Striker Plate (LH Mount)	1
52	b 292513	Capscrew (Center Mount)	4
52	a 292513	Capscrew (Center Mount)	2
52	136985	Capscrew (LH Mount)	4
53	b 320159	Washer (Center Mount)	4
53	a 320159	Washer (Center Mount)	12
53	320159	Washer (LH Mount)	6
54	b 292682	Lockwasher (Center Mount)	4
54	a 292682	Lockwasher (Center Mount)	8
54	292682	Lockwasher (LH Mount)	6
55	b 136692	Nut (Center Mount)	4
55	a 136692	Nut (Center Mount)	8
55	136692	Nut (LH Mount)	6
56	1374428	Latch Assembly	2
57	1356943	Latch	1
58	1356948	Bracket	1
59	1358734	Spring	1
60	226774	Pin	1
61	a 18839	Pin (Center Mount)	4
61	18839	Pin (LH Mount)	2

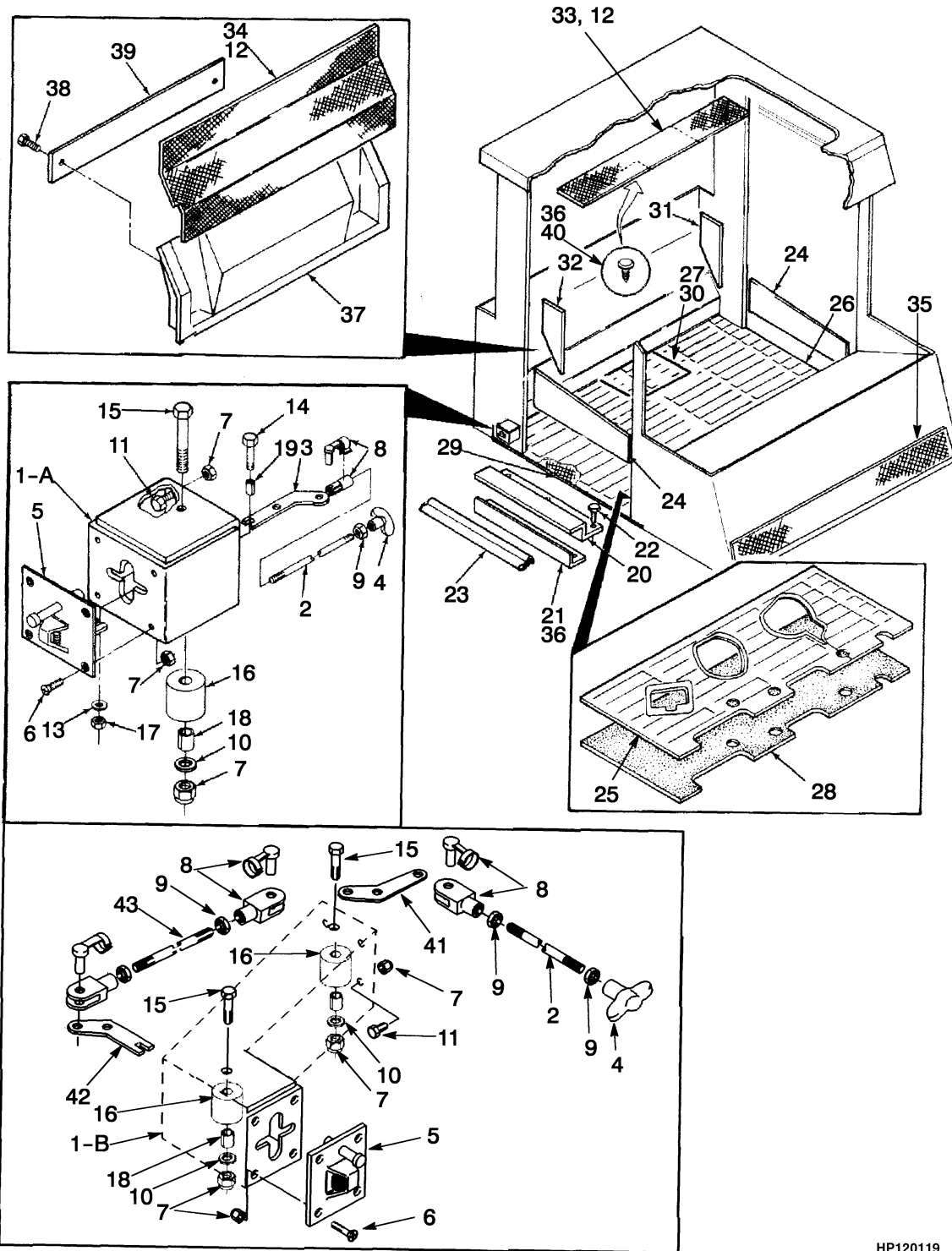
**OPERATOR COMPARTMENT
SHEET 1 OF 3**

ITEM	PART NO.	DESCRIPTION	QTY	
			A	B
62	a 1378439	Plate (Center Mount)	4
62	1378439	Plate (LH Mount)	2
63	a 334340	Washer (Center Mount)	4
63	334340	Washer (LH Mount)	2
64	a 18518	Capscrew (Center Mount).....	..	2
64	18518	Capscrew (LH Mount).....	..	1
65	a 18515	Washer (Center Mount)	4
65	18515	Washer (LH Mount)	2
66	a 15114	Nut (Center Mount).....	..	2
66	15114	Nut (LH Mount)	1
67	a 1378429	Roller (Center Mount)	2
67	1378429	Roller (LH Mount)	1
68	a 1458111	Channel (RH) (Center Mount)	1
68	a 1458115	Channel (LH) (Center Mount)	1
68	1378430	Channel (LH Mount)	1
69	a 1378436	Slider (Center Mount)	2
69	1378436	Slider (LH Mount)	1
70	816377	Seal	2	..
71	816378	Seal	2	..
72	287854	Capscrew (LH Mount).....	..	2

FOOTNOTES:

- a** H20.00-25.00FS
- b** H20.00-32.00F, H28-00-32.00FS
- c** ⇒ S/N E008D-1581
- d** S/N E008D-1582 ⇒
- e** ⇒ S/N E008E-1654
- f** S/N E008E-1655 ⇒

OPERATOR COMPARTMENT (Figure 1-10) SHEET 2 OF 3



HP120119

Thank you so much for reading.
Please click the “Buy Now!”
button below to download the
complete manual.



After you pay.

You can download the most
perfect and complete manual in
the world immediately.

Our support email:

ebooklibonline@outlook.com