

PARTS MANUAL

**E1.50XM, E1.75XM, E2.00XM,
E2.00XMS
(E114)**

CUSTOMER EDITION

HYSTER

SECTIONS

1	FRAME
2	ELECTRICAL SYSTEM
3	DRIVE UNIT
4	STEERING SYSTEM
5	BRAKE/ACCELERATOR SYSTEM
6	HYDRAULIC SYSTEM
7	MAST-TWO STAGE LIMITED FREE-LIFT
8	MAST-THREE STAGE FULL FREE-LIFT
9	MAST-TWO STAGE FULL FREE-LIFT
10	OPTIONS
11	NUMERICAL INDEX

TABLE OF CONTENTS

DESCRIPTION	PAGE
A	
ACCELERATOR ASSEMBLY	5-14
ACCELERATOR PEDAL.....	5-16
B	
BRAKE AND BACK-UP LIGHTS	
WITH AUDIBLE ALARM	2-26
BRAKE ASSEMBLY	5-4
BRAKE PEDAL ASSEMBLY	5-2
C	
CARRIAGE	
THREE STAGE FULL FREE LIFT	
C555 SERIES.....	8-42
THREE STAGE FULL FREE-LIFT	
A555 SERIES.....	8-18
TWO STAGE FULL FREE-LIFT	
A559 SERIES.....	9-16
C559 SERIES.....	9-36
TWO STAGE LIMITED FREE-LIFT	
A551 SERIES.....	7-12
CONNECTING HOSES	
THREE STAGE FULL FREE-LIFT	
C555 SERIES.....	8-48
CONTACTOR	
LINE.....	2-14
POWER STEERING	2-16
CONTACTOR PANEL ASSEMBLY	
CONTACTOR HYDRAULIC	2-18
LINE AND POWER STEERING	2-12
CONTROL PANEL	
CONTACTOR HYDRAULIC	2-10
TRACTION AND PUMP CONTROLLER	2-8
CONTROL VALVE	
FOUR FUNCTION	6-30
THREE FUNCTION	6-26
CONTROL VALVE ATTACHING PARTS.....	6-22
COUNTERWEIGHT	1-14
COVERS	1-10
COWL AND FLOOR PLATES	1-6
D	
DASH DISPLAY	2-6
DIFFERENTIAL.....	3-6
DRIVE AXLE	3-8
E	
ELECTRICAL SYSTEM.....	2-2

TABLE OF CONTENTS (Continued)

DESCRIPTION	PAGE
F	
FORKS	1-2
FREE LIFT	
THREE STAGE FULL FREE-LIFT	
C555 SERIES.....	8-38
FREE-LIFT	
THREE STAGE FULL FREE-LIFT	
A555 SERIES.....	8-10
TWO STAGE FULL FREE-LIFT	
A559 SERIES.....	9-8
C559 SERIES.....	9-32
FREE-LIFT CYLINDER	
THREE STAGE FULL FREE-LIFT	
A555 SERIES.....	8-16
C555 SERIES.....	8-40
TWO STAGE FULL FREE-LIFT	
A559 SERIES.....	9-14
C559 SERIES.....	9-34
FRONT LIGHT.....	2-20
FULL SUSPENSION SEAT	
SHEET 1 OF 2.....	1-24
SHEET 2 OF 2.....	1-26
G	
GEAR PUMP.....	4-10
H	
HAND LEVERS	6-20
HEADER HOSE	
THREE STAGE FULL FREE-LIFT	
A555 SERIES.....	8-20
TWO STAGE FULL FREE-LIFT	9-18
TWO STAGE LIMITED FREE-LIFT	
A551 SERIES.....	7-14
HEADER HOSES	
THREE STAGE FULL FREE-LIFT	
C555 SERIES.....	8-44
TWO STAGE FULL FREE-LIFT	
C559 SERIES.....	9-38
TWO STAGE LIMITED FREE-LIFT	
C551 SERIES.....	7-26
HOOD.....	1-16
HYDRAULIC MOTOR	
AC HYDRAULICS.....	6-8
DC HYDRAULICS.....	6-10
HYDRAULIC MOTOR MOUNT.....	6-6
HYDRAULIC PUMP	
19 CC DOUBLE GEAR PUMP LOW NOISE	6-12
DC HYDRAULICS	
12 CC	6-14
HYDRAULIC SUPPLY AND RETURN.....	6-2
HYDRAULIC TANK.....	6-4

TABLE OF CONTENTS (Continued)

DESCRIPTION	PAGE
I	
INNER MAST	
THREE STAGE FULL FREE-LIFT	
A555 SERIES.....	8-6
C555 SERIES.....	8-28
TWO STAGE FULL FREE-LIFT	
A559 SERIES.....	9-4
TWO STAGE LIMITED FREE-LIFT	
A551 SERIES.....	7-4
C551 SERIES.....	7-18
C559 SERIES.....	9-24
INTEGRAL SIDE-SHIFT CARRIAGE	
TWO AND THREE STAGE FULL FREE-LIFT	
A555 AND A559 SERIES.....	10-4
C555 AND C559 SERIES.....	10-6
TWO STAGE LIMITED FREE-LIFT.....	10-2
INTEGRAL SIDE-SHIFT CYLINDER.....	
	10-8
INTEGRAL SIDE-SHIFT HYDRAULIC HOSES	
TWO AND THREE STAGE FULL FREE-LIFT	
A555 AND A559 SERIES.....	10-11
C555 AND C559 SERIES.....	10-12
TWO STAGE LIMITED FREE-LIFT.....	10-10
INTERMEDIATE MAST	
THREE STAGE FULL FREE-LIFT	
A555 SERIES.....	8-4
C555 SERIES.....	8-26
L	
LABEL AND PLATE LOCATION.....	1-20
LOAD BACKREST EXTENSION.....	1-4
M	
MAIN CYLINDER	
THREE STAGE FULL FREE-LIFT	
LEFT HAND, A555 SERIES.....	8-12
RIGHT HAND, A555 SERIES.....	8-14
TWO STAGE FULL FREE-LIFT	
LEFT HAND, A559 SERIES.....	9-10
RIGHT HAND, A559 SERIES.....	9-12
TWO STAGE LIMITED FREE-LIFT	
LEFT HAND, A551 SERIES.....	7-8
RIGHT HAND, A551 SERIES.....	7-10
MAIN LIFT	
THREE STAGE FULL FREE-LIFT	
A555 SERIES.....	8-8
C555 SERIES.....	8-30
TWO STAGE FULL FREE-LIFT	
A559 SERIES.....	9-6
C559 SERIES.....	9-26
TWO STAGE LIMITED FREE-LIFT	
A551 SERIES.....	7-6
C551 SERIES.....	7-20

TABLE OF CONTENTS (Continued)

DESCRIPTION	PAGE
M (continued)	
MAIN LIFT CYLINDER	
THREE STAGE FULL FREE-LIFT	
LEFT HAND, C555 SERIES.....	8-34
RIGHT HAND, C555 SERIES.....	8-36
TWO STAGE FULL FREE-LIFT	
LEFT HAND, C559 SERIES.....	9-30
RIGHT HAND, C559 SERIES.....	9-28
TWO STAGE LIMITED FREE-LIFT	
LEFT HAND, C551 SERIES.....	7-24
RIGHT HAND, C551 SERIES.....	7-22
MAST INSTALLATION.....	6-16
MASTER CYLINDER.....	5-8
O	
OUTER MAST	
THREE STAGE FULL FREE-LIFT	
A555 SERIES.....	8-2
C555 SERIES.....	8-24
TWO STAGE FULL FREE-LIFT	
A559 SERIES.....	9-2
C559 SERIES.....	9-22
TWO STAGE LIMITED FREE-LIFT	
A551 SERIES.....	7-2
C551 SERIES.....	7-16
OVERHEAD GUARD.....	1-12
P	
PARK BRAKE LEVER.....	5-10
S	
SEMI-SUSPENSION SEAT.....	1-22
SHIFT LEVER.....	4-4
STEERING AXLE.....	4-12
STEERING CYLINDER.....	4-14
STEERING HYDRAULICS.....	4-8
STEERING POD.....	4-2
STEERING PUMP.....	4-6
T	
TAIL LIGHT ASSEMBLY.....	2-28
TILT CYLINDER.....	6-18
TIRE AND WHEEL	
DRIVE WHEEL	
CUSHION.....	3-14
SOLID SNAP ON TIRE.....	3-16
STEERING.....	4-15
TRACTION MOTOR	
SHEET 1 OF 2.....	3-10
SHEET 2 OF 2.....	3-12

TABLE OF CONTENTS (Continued)

DESCRIPTION	PAGE
T (continued)	
TRANSMISSION	3-2
W	
WIRE HARNESS	
LIGHTS	2-30
MAIN	2-4
WORK LIGHT	2-24
WITH AMBER STROBE	2-22

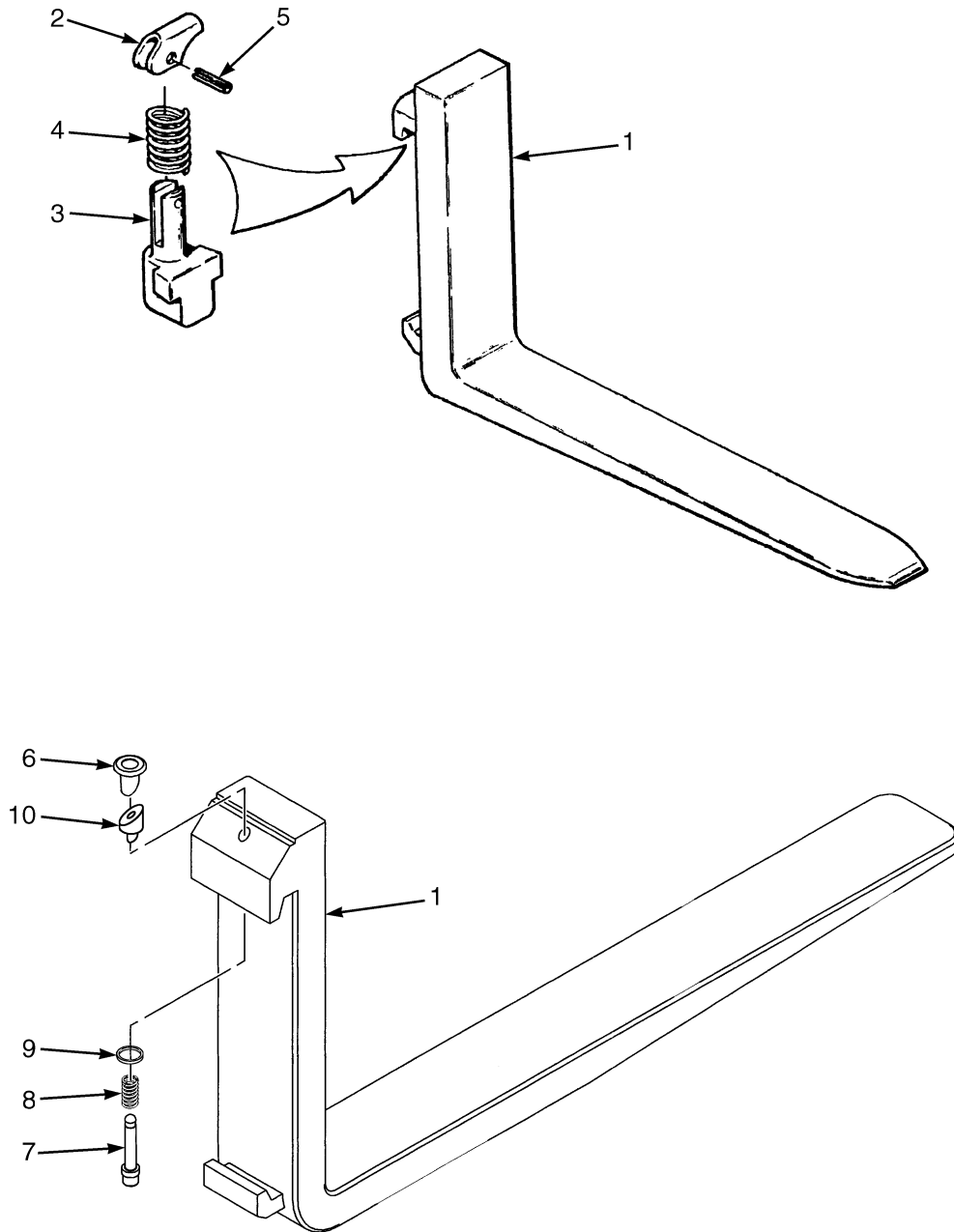
1

FRAME

**SECTION 1
FRAME**

DESCRIPTION	PAGE
COUNTERWEIGHT	1-14
COVERS	1-10
COWL AND FLOOR PLATES	1-6
FORKS	1-2
FULL SUSPENSION SEAT	
SHEET 1 OF 2	1-24
SHEET 2 OF 2	1-26
HOOD	1-16
LABEL AND PLATE LOCATION	1-20
LOAD BACKREST EXTENSION	1-4
OVERHEAD GUARD	1-12
SEMI-SUSPENSION SEAT	1-22

FORKS (Figure 1-1)



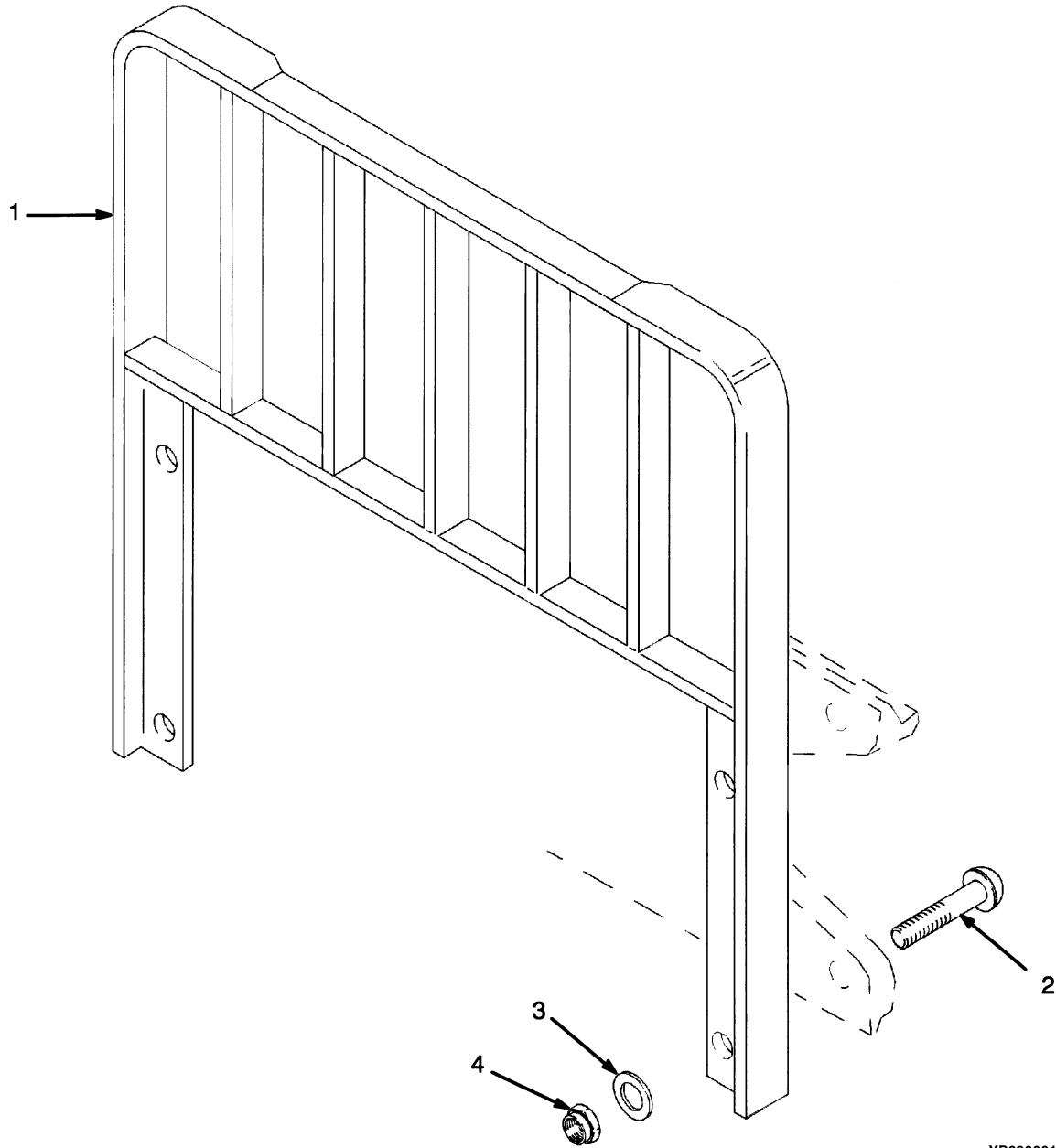
HP120759

FORKS**KEY:****A: Standard Taper****B: Full Bottom Taper**

ITEM	PART NO.	DESCRIPTION	QTY	
			A	B
1	b 1327021	Fork (991 mm)	2	..
1	b 1327022	Fork (1092 mm)	2	..
1	b 1327023	Fork (1194 mm)	2	..
1	a 1333043	Fork (1000 mm)	2	..
1	a 1333044	Fork (1100 mm)	2	..
1	b 1378776	Fork (991 mm)	2
1	b 1378777	Fork (1092 mm)	2
1	b 1378779	Fork (1194 mm)	2
1	a 1378793	Fork (991 mm)	2
1	a 1378794	Fork (1092 mm)	2
2	1378763	Latch.....	..	1
3	1378760	Pin	1
4	1378762	Spring.....	..	1
5	302450	Pin	1
6	1523732	Knob	1	..
7	1523733	Pin	1	..
8	1500782	Spring.....	1	..
9	c 1477166	Washer	1	..
10	c 1477167	Wedge	1	..
	1523735	Latch Kit (Class II) (Includes Items 6-10)	2	..
	1378765	Latch Kit (Class II) (Includes Items 2-5)	2

FOOTNOTES:**a** (100 mm x 40 mm)**b** (80 mm x 40 mm)**c** Refer to Latch Kit Installation Instruction

LOAD BACKREST EXTENSION (Figure 1-2)

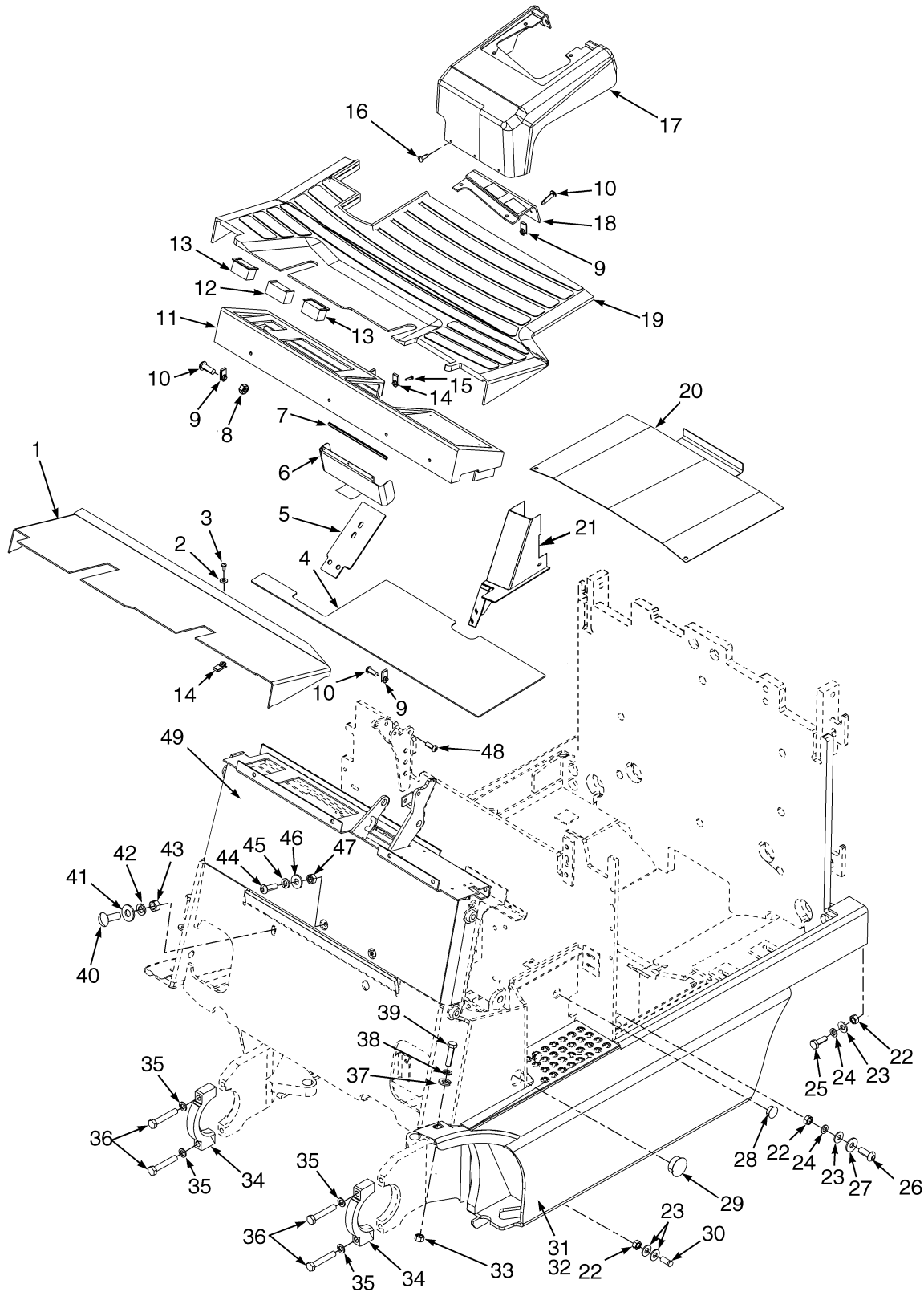


YP290001

LOAD BACKREST EXTENSION

ITEM	PART NO.	DESCRIPTION	QTY
1	1349440	Load Backrest Extension (906,8 mm).....	1
2	1343990	Capscrew (With Side-Shift Carriage).....	4
2	1353533	Capscrew.....	4
3	221771	Washer	4
3	296423	Washer (Optional).....	4
4	300937	Locknut	4

COWL AND FLOOR PLATES (Figure 1-3)



BP120107

COWL AND FLOOR PLATES**KEY:****A: 878 mm Battery Compartment****B: 909 mm Battery Compartment**

ITEM	PART NO.	DESCRIPTION	QTY	
			A	B
1	2072295	Floorplate.....	1	1
2	15127	Washer	3	3
3	296161	Capscrew.....	3	3
4	2026813	Floorplate.....	1	1
5	2065835	Liner.....	1	1
6	1364395	Cover	1	1
7	1376812	Trim.....	1	1
8	169874	Nut	4	4
9	1381918	Nut (Foldover).....	2	2
10	1381919	Screw.....	2	2
11	2065834	Dash	1	1
12	1382312	Mounting Panel.....	1	1
13	1382311	Mounting Panel.....	2	2
13	g 1382313	Mounting Panel.....	3	3
14	1354323	Nut (Foldover).....	14	14
15	353144	Capscrew.....	8	8
16	1364399	Screw.....	3	3
17	2065839	Cover	1	1
18	1381910	Cover	1	1
19	2026804	Floor Mat	1	1
20	2023947	Cover	1	1
21	f 2026823	Cover (Weldment).....	1	1
21	e 2026824	Cover (Weldment).....	1	1
22	136692	Nut	9	9
23	1356113	Washer	11	11
24	292682	Lockwasher.....	9	9
25	136985	Capscrew.....	4	4
26	2069458	Capscrew.....	1	1
27	1324577	Washer	1	1
28	1389590	Plug	3	3
29	1356377	Plug	2	2
30	287860	Capscrew.....	2	2
31	c 1551538	Fender (LH)	1	..
31	c 1553908	Fender (LH)	1
31	d 1550700	Fender (LH)	1	..
31	d 1553909	Fender (LH)	1
31	a 1550701	Fender (LH)	1	..
31	a 1553910	Fender (LH)	1
32	c 1553737	Fender (RH).....	1	..
32	c 1550702	Fender (RH).....	..	1
32	d 1553738	Fender (RH).....	1	..
32	d 1550703	Fender (RH).....	..	1
32	a 1553739	Fender (RH).....	1	..
32	a 1553672	Fender (RH).....	..	1
33	216877	Nut	2	2
34	2029860	Trunnion Cap	2	2

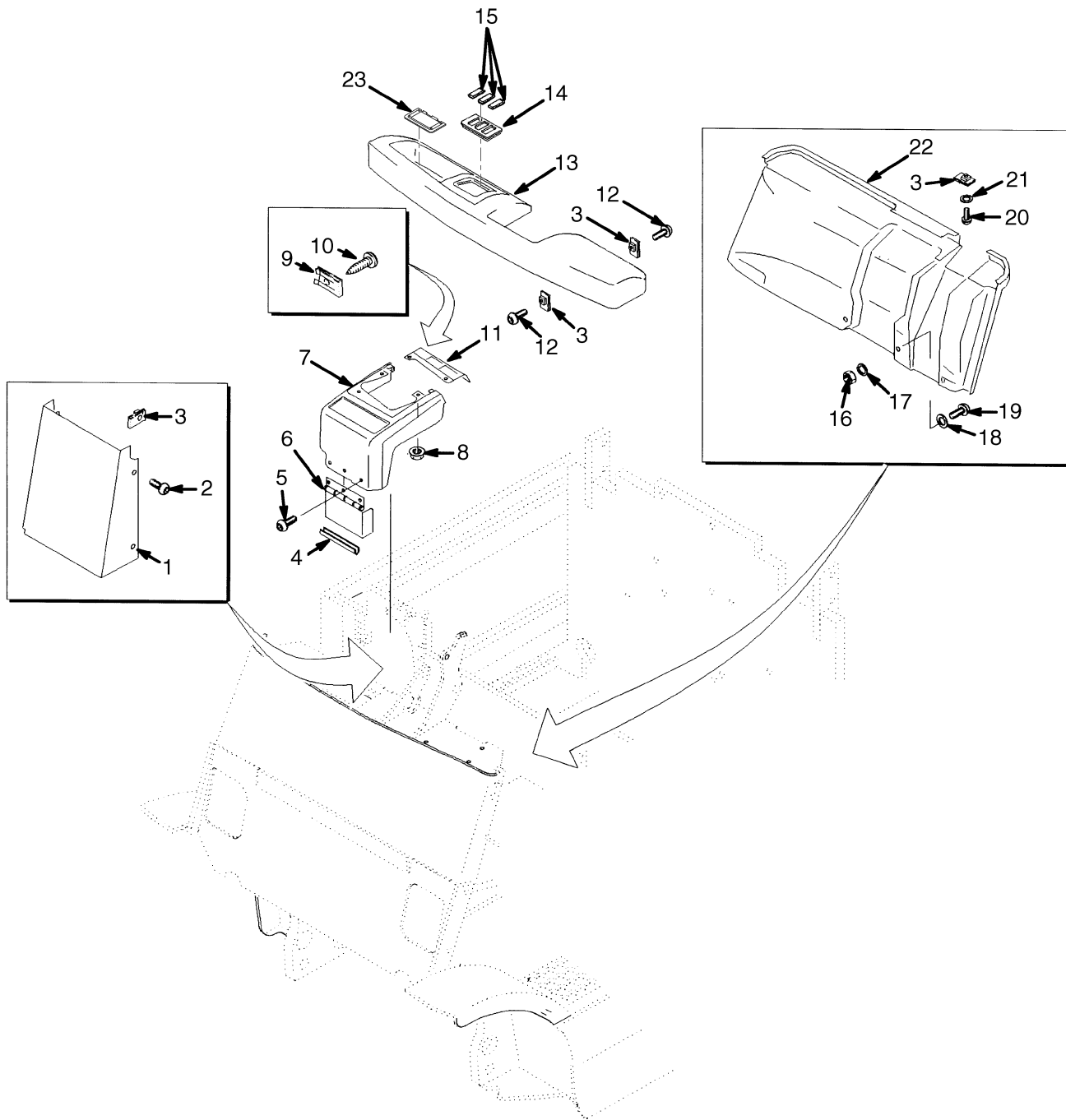
COWL AND FLOOR PLATES

ITEM	PART NO.	DESCRIPTION	QTY	
			A	B
35	2021834	Washer	4	4
36	292533	Capscrew	4	4
37	320162	Washer	4	4
38	292683	Lockwasher.....	2	2
39	292529	Capscrew	2	2
40	17105	Bolt	2	2
41	15156	Lockwasher.....	2	2
42	15176	Washer	8	8
43	15056	Nut	2	2
44	296167	Capscrew	2	2
45	292681	Lockwasher.....	2	2
46	320158	Washer	2	2
47	239503	Nut	2	2
48	18494	Capscrew	1	1
49	1551686	Cowl.....	1	1
50	b 296159	Capscrew	3	3
51	b 1326939	Cap	1	1

FOOTNOTES:

- a** Extra Wide Tread
- b** Not Illustrated
- c** Standard Tread
- d** Wide Tread
- e** With High Hood
- f** With Low Hood
- g** Without Lights

COVERS (Figure 1-4)



HP120625

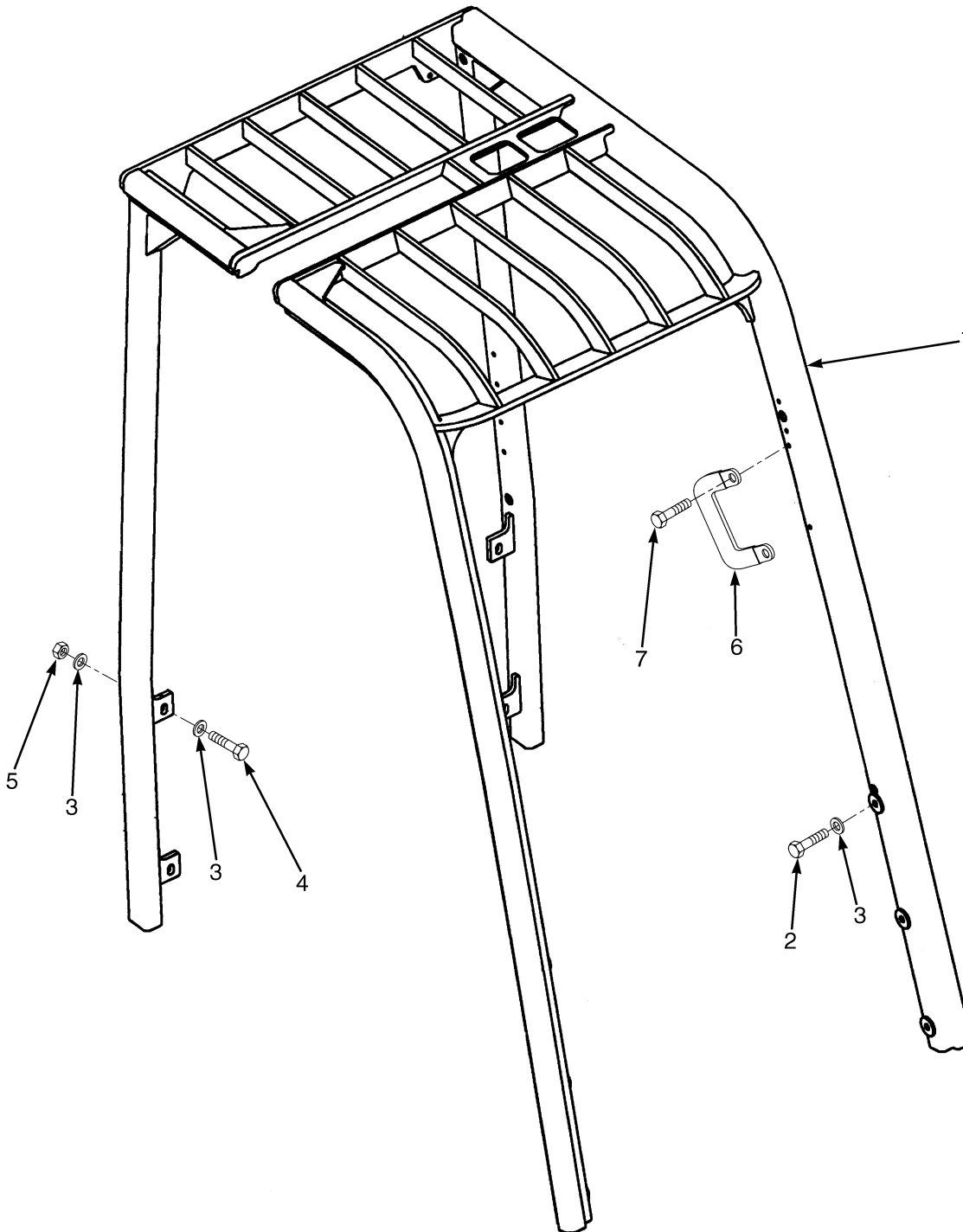
COVERS

ITEM	PART NO.	DESCRIPTION	QTY
1	b 2026824	Cover (Weldment).....	1
1	c 2026823	Cover (Weldment).....	1
2	296159	Capscrew.....	3
3	1354323	Nut (Foldover).....	14
4	1376812	Trim.....	1
5	1364399	Screw.....	3
6	1364395	Cover.....	1
7	2065839	Cover.....	1
8	169874	Nut.....	4
9	1381918	Nut (Foldover).....	2
10	1381919	Screw.....	2
11	1381910	Cover.....	1
11	a 2066939	Cover.....	1
12	353144	Capscrew.....	7
13	2065834	Dash.....	1
14	1382312	Mounting Panel.....	1
15	1382313	Mounting Panel.....	3
16	239503	Nut.....	2
17	292681	Lockwasher.....	2
18	320158	Washer.....	2
19	296167	Capscrew.....	2
20	296161	Capscrew.....	3
21	15127	Washer.....	3
22	2065835	Liner.....	1
23	1382311	Mounting Panel.....	2

FOOTNOTES:

- a** Optional
- b** With Raised Battery
- c** Without Raised Battery

OVERHEAD GUARD (Figure 1-5)



HP120764

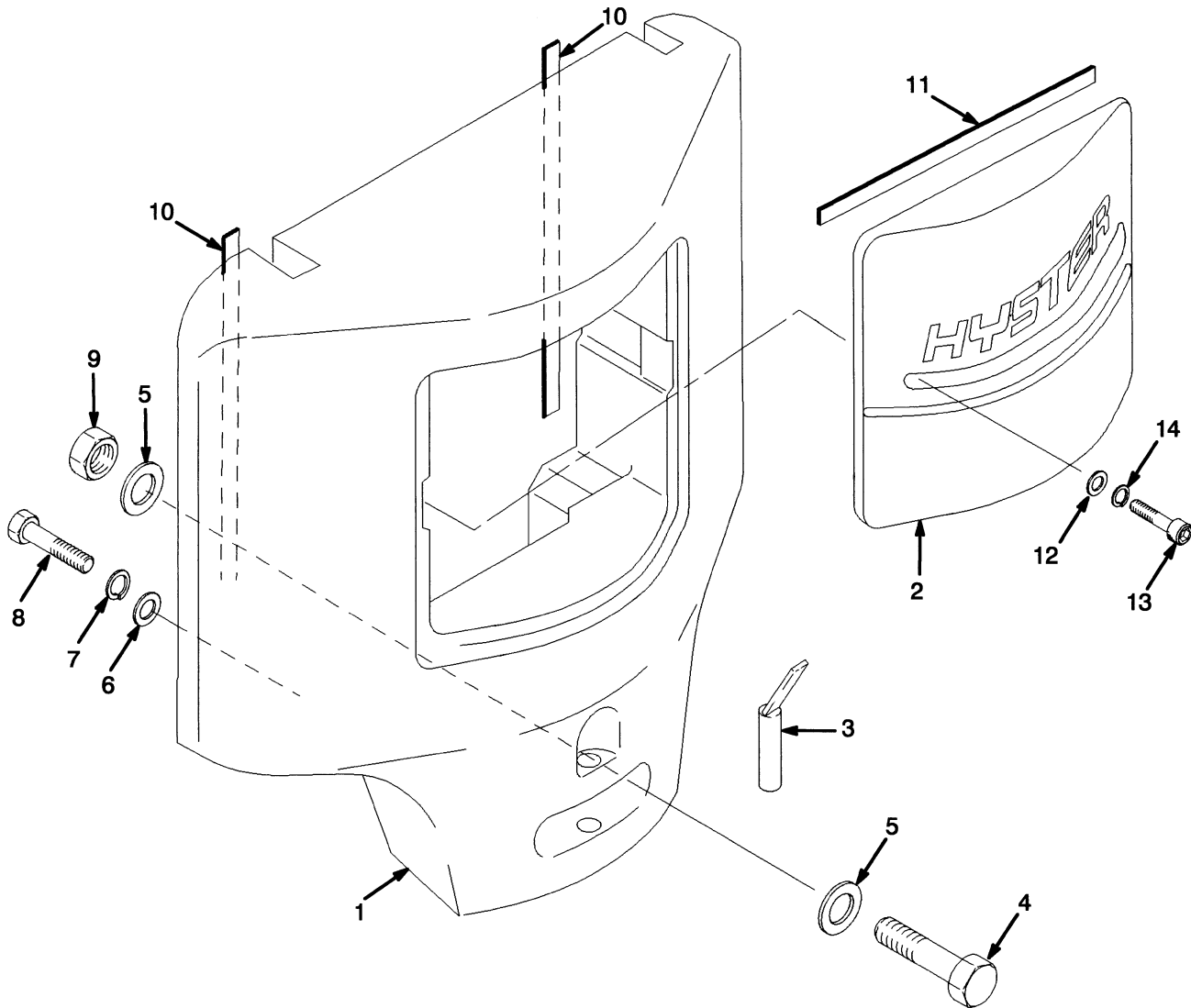
OVERHEAD GUARD

ITEM	PART NO.	DESCRIPTION	QTY
1	1551787	Overhead Guard (Standard Height).....	1
1	1551788	Overhead Guard (Raised Height).....	1
2	293649	Capscrew.....	6
3	320161	Washer.....	14
4	293647	Capscrew.....	4
5	1390182	Nut.....	4
6	1536813	Handle (Grab).....	1
7	329067	Screw.....	2
	a 1363917	Plug.....	4
	a 1363916	Plug.....	16

FOOTNOTES:

a Not Illustrated

COUNTERWEIGHT (Figure 1-6)

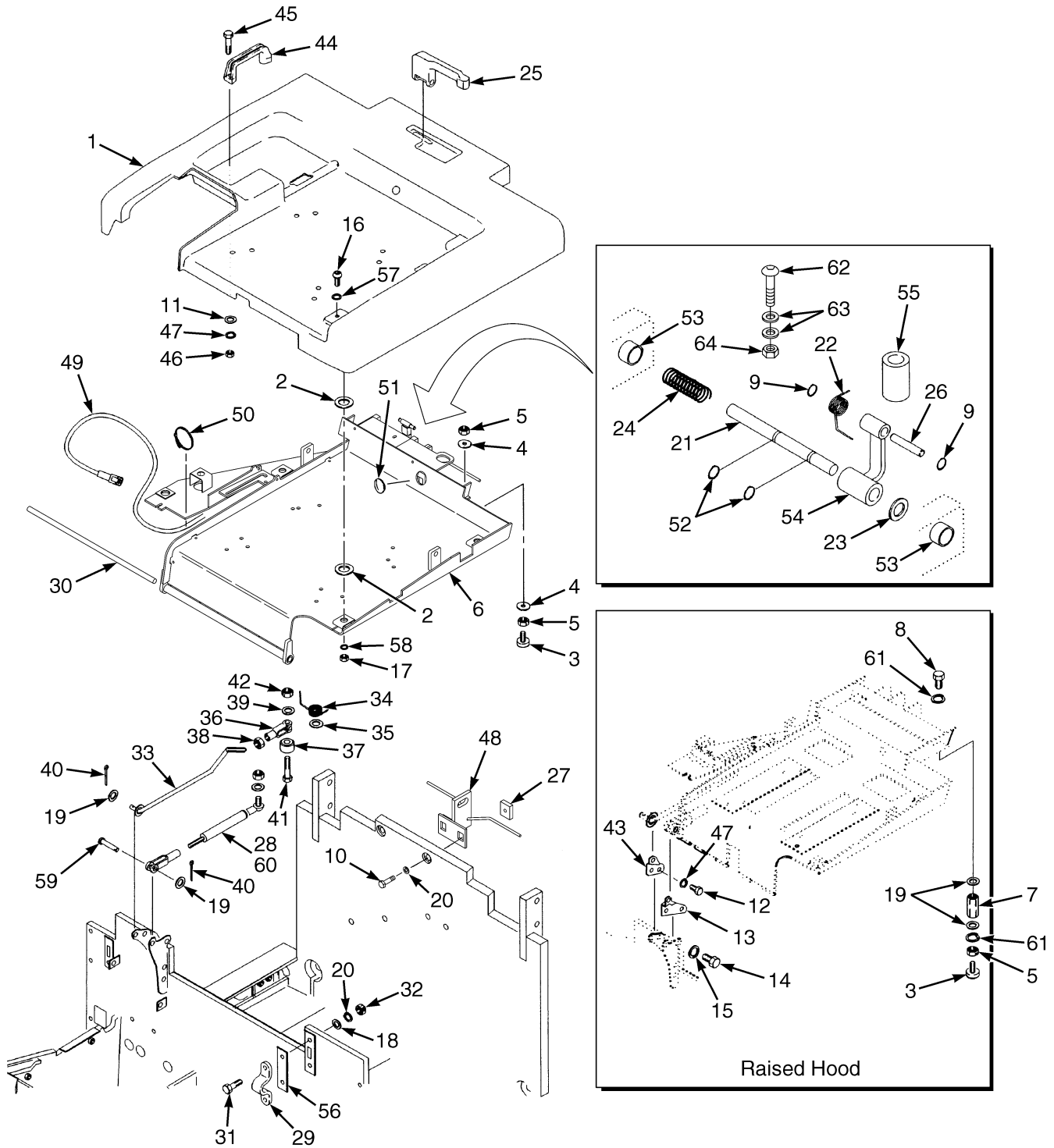


HP120746

COUNTERWEIGHT

ITEM	PART NO.	DESCRIPTION	QTY
1	1566680	Counterweight (1.50-1.75 XM).....	1
1	1566681	Counterweight (2.0 XM).....	1
2	1550699	Cover	1
3	326347	Tow Pin	1
4	292537	Capscrew.....	2
5	296423	Washer	4
6	221777	Washer	2
7	15162	Lockwasher.....	2
8	168054	Capscrew.....	2
9	300937	Locknut	2
10	326003	Tape.....	AR
11	1546460	Tape.....	AR
12	15134	Washer	2
13	46698	Capscrew.....	2
14	15156	Lockwasher.....	2

HOOD (Figure 1-7)



HP120757

HOOD**KEY:****A: 878 mm Battery Compartment****B: 909 mm Battery Compartment**

ITEM	PART NO.	DESCRIPTION	QTY	
			A	B
1	1553810	Hood	1	..
1	1553821	Hood	1
2	1383680	Spacer	4	4
3	a 1347088	Stop Screw	2	2
3	b 367251	Stop Screw	2	2
4	15155	Lockwasher	4	4
5	15055	Nut	2	2
6	1562281	Frame	1	1
7	a 1364729	Spacer	2	2
8	a 16394	Capscrew	2	2
9	12892	Snap Ring	2	2
10	292515	Capscrew	2	2
11	2034906	Washer	2	2
12	a 293601	Capscrew	2	2
13	a 1377378	Bracket	1	1
14	a 293613	Capscrew	2	2
15	a 292681	Lockwasher	2	2
16	296173	Capscrew	5	5
17	316826	Nut	5	5
18	320159	Washer	2	2
19	18515	Washer	6	6
20	292682	Lockwasher	4	4
21	1546307	Shaft	1	1
22	1377670	Spring	1	1
23	15125	Washer	1	1
24	1364538	Spring	1	1
25	1544196	Handle	1	1
26	1378975	Pin	1	1
27	1364537	Plate	2	2
28	1385758	Gas Spring	1	1
29	355374	Clamp	1	1
30	1468405	Bar	1	1
31	287854	Capscrew	2	2
31	136985	Capscrew	2	2
32	136692	Nut	2	2
33	1385761	Rod	1	1
34	1340866	Spring	1	1
35	1340867	Spacer	1	1
36	1364096	Clevis	1	1
37	1364243	Knob	1	1
38	15025	Nut	1	1
39	296419	Washer	2	2
40	15212	Cotter Pin	2	2
41	293799	Capscrew	1	1
42	313805	Nut	1	1
43	a 1340743	Bracket	1	1

HOOD

ITEM	PART NO.	DESCRIPTION	QTY	
			A	B
44	362030	Handle	1	1
45	287816	Capscrew	2	2
46	136687	Nut	2	2
47	292680	Lockwasher.....	4	4
48	b 1556488	Latch.....	1	1
48	a 1556669	Latch.....	1	1
49	c 1340531	Wire Harness.....	1	1
50	c 114312	Strap Clamp.....	5	5
51	c 1359587	Grommet.....	1	1
52	353569	Retaining Ring	2	2
53	368618	Bushing.....	2	2
54	1378900	Link	1	1
55	1378902	Collar	1	1
56	325616	Spacer	AR	AR
57	320160	Washer	5	5
58	15177	Washer	5	5
59	139	Rod End Pin	1	1
60	251099	Adhesive	2	2
61	15155	Lockwasher.....	4	4
62	296161	Capscrew	1	1
63	320156	Washer	2	2
64	313805	Nut	1	1

FOOTNOTES:

- a** With Raised Hood
- b** Without Raised Hood
- c** Without Seat Brake

Thank you so much for reading.
Please click the “Buy Now!”
button below to download the
complete manual.



After you pay.

You can download the most
perfect and complete manual in
the world immediately.

Our support email:

ebooklibonline@outlook.com