

PARTS MANUAL

CHALLENGER

**H40.00XM-H48.00XM-16CH,
H50.00XM-H52.00XM-16CH
(E117)**

CUSTOMER EDITION

HYSTER

SECTIONS

| | |
|-----------|--|
| 1 | FRAME |
| 2 | ENGINES |
| 3 | FUEL SYSTEM |
| 4 | ELECTRICAL SYSTEM |
| 5 | TRANSMISSION |
| 6 | DRIVE AXLE |
| 7 | STEERING SYSTEM |
| 8 | BRAKE SYSTEM |
| 9 | HYDRAULIC SYSTEM |
| 10 | MAST WITH EMPTY CONTAINER HANDLER |
| 11 | CONTAINER HANDLER ATTACHMENT |
| 12 | ATTACHMENTS |
| 13 | OPTIONS |
| 14 | NUMERICAL INDEX |

TABLE OF CONTENTS

| DESCRIPTION | PAGE |
|---------------------------------------|-------|
| A | |
| ACCUMULATOR | |
| PISTON TYPE | 9-24 |
| AIR CONDITIONING SYSTEM | 1-42 |
| AIR FILTER SYSTEM | 2-10 |
| AIR INLET CONNECTION | 2-67 |
| AIR OUTLET CONNECTION | 2-68 |
| AIR TRANSFER CONNECTION | 2-70 |
| ALARM | 13-10 |
| ALTERNATOR AND MOUNTING | 4-26 |
| ARMREST ASSEMBLY | |
| SEAT | 1-40 |
| ARMREST SWITCHES | 4-21 |
| AXLE HOUSING | |
| WET BRAKE | 6-6 |
| B | |
| BRAKE AND INCHING PEDAL LINKAGE | 8-6 |
| BRAKE ASSEMBLY | |
| DISC | |
| WET BRAKE | 8-8 |
| WET BRAKE | 8-10 |
| BRAKE SYSTEM | 8-2 |
| BRAKE VALVE ASSEMBLY | 8-12 |
| BREATHER PLUMBING | 2-50 |
| C | |
| CAB ATTACHING PARTS | 1-16 |
| CAB FLOORMATS | 1-24 |
| CAB MOUNT | 1-14 |
| CAB PANELS | 1-30 |
| CAB SOUND REDUCTION | 1-26 |
| CAM FOLLOWER LEVER | 2-18 |
| CAMSHAFT | 2-20 |
| CLUTCH | |
| FORWARD | |
| C290, 36000 SERIES | 5-12 |
| FOURTH SPEED | |
| C290, 36000 SERIES | 5-18 |
| LOW SPEED | |
| C290, 36000 SERIES | 5-14 |
| REVERSE AND 2ND SHAFT | |
| C290, 36000 SERIES | 5-10 |
| THIRD SPEED | |
| C290, 36000 SERIES | 5-16 |
| CONDENSER | 1-46 |
| CONTROL PANEL | 4-12 |
| AIR CONDITIONER | 4-16 |
| HEATER | 4-14 |
| CONTROL VALVE | |
| ELECTRONIC INCHING | |

TABLE OF CONTENTS (Continued)

| DESCRIPTION | PAGE |
|--|-------|
| C (continued) | |
| C290, 36000 SERIES..... | 5-26 |
| HYDRAULIC INCHING | |
| C290, 36000 SERIES..... | 5-30 |
| CONTROL VALVE ASSEMBLY | |
| AUXILIARY | 9-12 |
| CAP AND SUPPORT KIT | 9-18 |
| LIFT..... | 9-14 |
| LIFT AND TILT | 9-16 |
| CONVERTER HOUSING ATTACHMENT | |
| THREE SPEED | |
| C290, 36000 SERIES..... | 5-22 |
| COOLANT HEATER STARTING AID | 2-52 |
| COOLING | 2-12 |
| CORROSION RESISTOR | 2-100 |
| COUNTERWEIGHT | 1-10 |
| FABRICATED..... | 1-12 |
| COVERS | 1-2 |
| CRANKSHAFT | 2-29 |
| CRANKSHAFT MAIN BEARINGS..... | 2-30 |
| CYLINDER BLOCK | 2-14 |
| CYLINDER BLOCK PLUMBING | 2-25 |
| CYLINDER HEAD | 2-16 |
| CYLINDER LINER..... | 2-24 |
| D | |
| DC-DC CONVERTER AND ATTACHING PARTS..... | 4-18 |
| DEDICATED CARRIAGE | 12-10 |
| DIFFERENTIAL CARRIER | |
| WET BRAKE..... | 6-2 |
| DOOR ATTACHING PARTS | 1-18 |
| DRIVE PULLEY | |
| AIR COMPRESSOR..... | 2-48 |
| WATER PUMP | 2-82 |
| DRIVE TIRE AND WHEEL | |
| 18.00 X 25..... | 13-12 |
| DRIVE TRAIN | |
| FRONT..... | 2-56 |
| E | |
| ELECTRICAL ACCESSORIES | 2-106 |
| ELECTRICAL SYSTEM..... | 4-4 |
| SERIES 813 AND 818 | 11-30 |
| SERIES 818..... | 11-32 |
| ENGINE ASSEMBLY..... | 2-3 |
| ENGINE CONTROL SYSTEM | 2-38 |
| ENGINE MOUNT..... | 2-6 |
| EXHAUST..... | 2-8 |
| EXHAUST MANIFOLD | 2-92 |
| EXTENSION CYLINDER AND ATTACHING PARTS | |

TABLE OF CONTENTS (Continued)

| DESCRIPTION | PAGE |
|---|-------|
| E (continued) | |
| SERIES 813 AND 818 | 11-20 |
| F | |
| FAN..... | 2-88 |
| FAN DRIVE..... | 2-62 |
| FLOORPLATES, STEPS, AND RAILS | 1-4 |
| FLOW AMPLIFIER | 9-26 |
| FLYWHEEL..... | 2-64 |
| FLYWHEEL HOUSING | 2-46 |
| FRONT ENGINE SUPPORT | 2-58 |
| FRONT GEAR COVER | 2-44 |
| FRONT, BRAKE/BACK-UP AND REAR WORK LIGHTS | 13-2 |
| FUEL FILTER PLUMBING..... | 3-18 |
| FUEL PUMP ASSEMBLY | 3-6 |
| FUEL PUMP COUPLING | 3-11 |
| FUEL PUMP DRIVE | 3-12 |
| FUEL PUMP PLUMBING | 3-9 |
| FUEL SYSTEM..... | 3-2 |
| FUSE BOX | |
| SEALED..... | 4-39 |
| FUSES AND RELAYS | 4-28 |
| G | |
| GANTRY CARRIAGE | |
| WITH MECHANICAL PILE SLOPE | 12-12 |
| WITH POWER PILE SLOPE | 12-14 |
| GEAR HOUSING..... | 2-34 |
| H | |
| HANDLEVER INSTALLATION..... | 9-42 |
| HANGER ASSEMBLY | |
| SERIES 818..... | 11-2 |
| HEADER HOSE | |
| ⇒S/N E117E01520C | 12-2 |
| S/N E117E01521C⇒ | 12-6 |
| HEATER AND AIR CONDITIONER ASSEMBLY..... | 1-50 |
| HEATER AND AIR CONDITIONER MOUNT | 1-48 |
| HEATER ASSEMBLY | 1-52 |
| HEATER HOSE ARRANGEMENT | 1-44 |
| HORN AND ATTACHING PARTS | 4-24 |
| HUB AND SHAFT | |
| WET BRAKE..... | 6-8 |
| HYDRAULIC PUMP | |
| MAIN..... | 9-28 |
| STEERING | |
| DUAL..... | 9-30 |
| HYDRAULIC STOP ASSEMBLY | |
| SERIES 813 AND 818 | 11-6 |
| HYDRAULIC SUPPLY AND RETURN | |

TABLE OF CONTENTS (Continued)

| DESCRIPTION | PAGE |
|---|-------|
| H (continued) | |
| SHEET 1 OF 2..... | 9-2 |
| SHEET 2 OF 2..... | 9-6 |
| HYDRAULIC SYSTEM | |
| SERIES 813..... | 11-34 |
| SERIES 818..... | 11-36 |
| HYDRAULIC TANK AND ATTACHING PARTS..... | 9-20 |
| HYDRAULIC VALVE AND ATTACHING PARTS..... | 9-8 |
| I | |
| IDLER GEAR..... | 2-36 |
| INDICATOR DISPLAY ASSEMBLY..... | 4-10 |
| INJECTOR..... | 3-4 |
| INLET CONNECTOR | |
| AIR COMPRESSOR..... | 2-66 |
| INTAKE MANIFOLD..... | 2-90 |
| J | |
| JOYSTICK INSTALLATION..... | 9-38 |
| L | |
| LABELS..... | 1-60 |
| LIFT ACCUMULATOR AND ATTACHING PARTS..... | 9-22 |
| LIFT CYLINDER..... | 10-10 |
| 12650 MM (498.0 IN.) LIFT HEIGHT..... | 10-12 |
| LIFTING BRACKET..... | 2-72 |
| LIGHT BAR AND MOUNT | |
| CAB..... | 4-22 |
| M | |
| MAIN FRAME | |
| SERIES 813 AND 818..... | 11-8 |
| MANIFOLD | |
| CAB..... | 9-32 |
| LIFT AND TILT..... | 9-34 |
| MAIN..... | 9-36 |
| MAST ASSEMBLY | |
| ⇒S/N E117E01520C..... | 10-2 |
| S/N E117E01521C⇒..... | 10-6 |
| MAST INSTALLATION..... | 9-48 |
| MIRRORS | |
| FRONT FENDER..... | 1-8 |
| N | |
| NOISE PANEL..... | 2-4 |

TABLE OF CONTENTS (Continued)

| DESCRIPTION | PAGE |
|---|-------|
| O | |
| OIL COOLER WATER PLUMBING | 2-102 |
| OIL FILLER ARRANGEMENT..... | 2-78 |
| OIL FILTER..... | 2-76 |
| OIL FILTER AND COOLER HEAD | 2-74 |
| OIL LEVEL GAUGE..... | 2-32 |
| OIL PAN..... | 2-42 |
| OIL PUMP AND ATTACHING PARTS | 2-40 |
| P | |
| PENDULAR TWIST LOCK | |
| SERIES 813 AND 818 | 11-12 |
| PILOT VALVE ASSEMBLY | |
| JOYSTICK..... | 9-40 |
| PISTON AND CONNECTING ROD..... | 2-26 |
| PISTON COOLING NOZZLE | 2-28 |
| PIVOT ARM ASSEMBLY | 1-38 |
| PUMP DRIVE AND SHAFT | |
| C290, 36000 SERIES | 5-20 |
| R | |
| RADIATOR PLUMBING..... | 2-84 |
| RADIO CONSOLE..... | 4-20 |
| REGULATING PRESSURE VALVE AND CHARGE PUMP | |
| C290, 36000 SERIES | 5-6 |
| ROCKER LEVERS | 2-22 |
| ROTATING BEACON | 13-6 |
| S | |
| SEAT ASSEMBLY | |
| AIR..... | 1-36 |
| MECHANICAL | 1-34 |
| SIDE-SHIFT CYLINDER | |
| SERIES 813 AND 818 | 11-15 |
| SLEWING CYLINDER | |
| SERIES 813 AND 818 | 11-17 |
| STAIR LIGHT | 13-8 |
| STARTER MOTOR | 2-85 |
| STEEL DOOR | |
| LEFT HAND | 1-22 |
| RIGHT HAND..... | 1-20 |
| STEER TIRE AND WHEEL | 13-16 |
| STEERING AXLE AND ATTACHING PARTS | 7-6 |
| STEERING AXLE ASSEMBLY | 7-8 |
| STEERING COLUMN AND ATTACHING PARTS..... | 7-2 |
| STEERING COLUMN ASSEMBLY | 7-4 |
| STEERING CONTROL VALVE..... | 7-12 |
| STEERING CYLINDER | 7-10 |
| STOP KIT ASSEMBLY | 11-4 |

TABLE OF CONTENTS (Continued)

| DESCRIPTION | PAGE |
|---|-------|
| T | |
| THERMOSTAT..... | 2-60 |
| THERMOSTAT HOUSING..... | 2-94 |
| THROTTLE PEDAL LINKAGE..... | 3-14 |
| TILT CYLINDER..... | 9-46 |
| TILT CYLINDER AND ATTACHING PARTS..... | 9-44 |
| TIRES AND WHEELS | |
| DRIVE AND STEER | |
| 18.00 X 33 X 36 PLY..... | 13-14 |
| TRAINING SEAT..... | 1-32 |
| TRANSMISSION | |
| C330, 40000 SERIES | |
| CASE AND REAR COVER..... | 5-32 |
| ELECTRIC CONTROL VALVE..... | 5-64 |
| FIRST SPEED CLUTCH..... | 5-54 |
| FIRST SPEED GEARS..... | 5-44 |
| FORWARD CLUTCH SHAFT..... | 5-46 |
| FORWARD, REVERSE, SECOND AND FOURTH CLUTCH SHAFT..... | 5-43 |
| FOURTH SPEED CLUTCH SHAFT..... | 5-56 |
| INPUT DRIVE GEARS..... | 5-42 |
| MODULATOR VALVE..... | 5-66 |
| OUTPUT FLANGE AND SHAFT..... | 5-60 |
| OUTPUT SHAFT GEARS..... | 5-58 |
| PUMP DRIVE..... | 5-38 |
| REGULATING VALVE AND CHARGE PUMP..... | 5-62 |
| SECOND AND REVERSE CLUTCH SHAFT..... | 5-52 |
| THIRD SPEED CLUTCH SHAFT..... | 5-48 |
| THIRD SPEED GEARS..... | 5-50 |
| TORQUE CONVERTER AND DRIVE PLATE..... | 5-34 |
| TORQUE CONVERTER HOUSING..... | 5-40 |
| TURBINE SHAFT, STATOR SUPPORT AND OIL BAFFLE..... | 5-36 |
| TRANSMISSION CASE AND REAR COVER | |
| C290, 36000 SERIES..... | 5-8 |
| TRANSMISSION CONTROLLER AND SHIFT LEVER..... | 4-8 |
| TRANSMISSION LINES AND ATTACHING PARTS..... | 5-2 |
| TURBOCHARGER..... | 2-80 |
| TURBOCHARGER PLUMBING..... | 2-96 |
| U | |
| UNDERFLOOR COVER MOUNT..... | 1-28 |
| UNIVERSAL SHAFT..... | 5-5 |
| V | |
| VALVE | |
| EXTENSION CYLINDER | |
| SERIES 813 AND 818..... | 11-23 |
| VALVE ASSEMBLY | |
| SERIES 813..... | 11-26 |
| SERIES 813 AND 818..... | 11-28 |
| VALVE COVER..... | 2-98 |
| VIBRATION DAMPER..... | 2-54 |

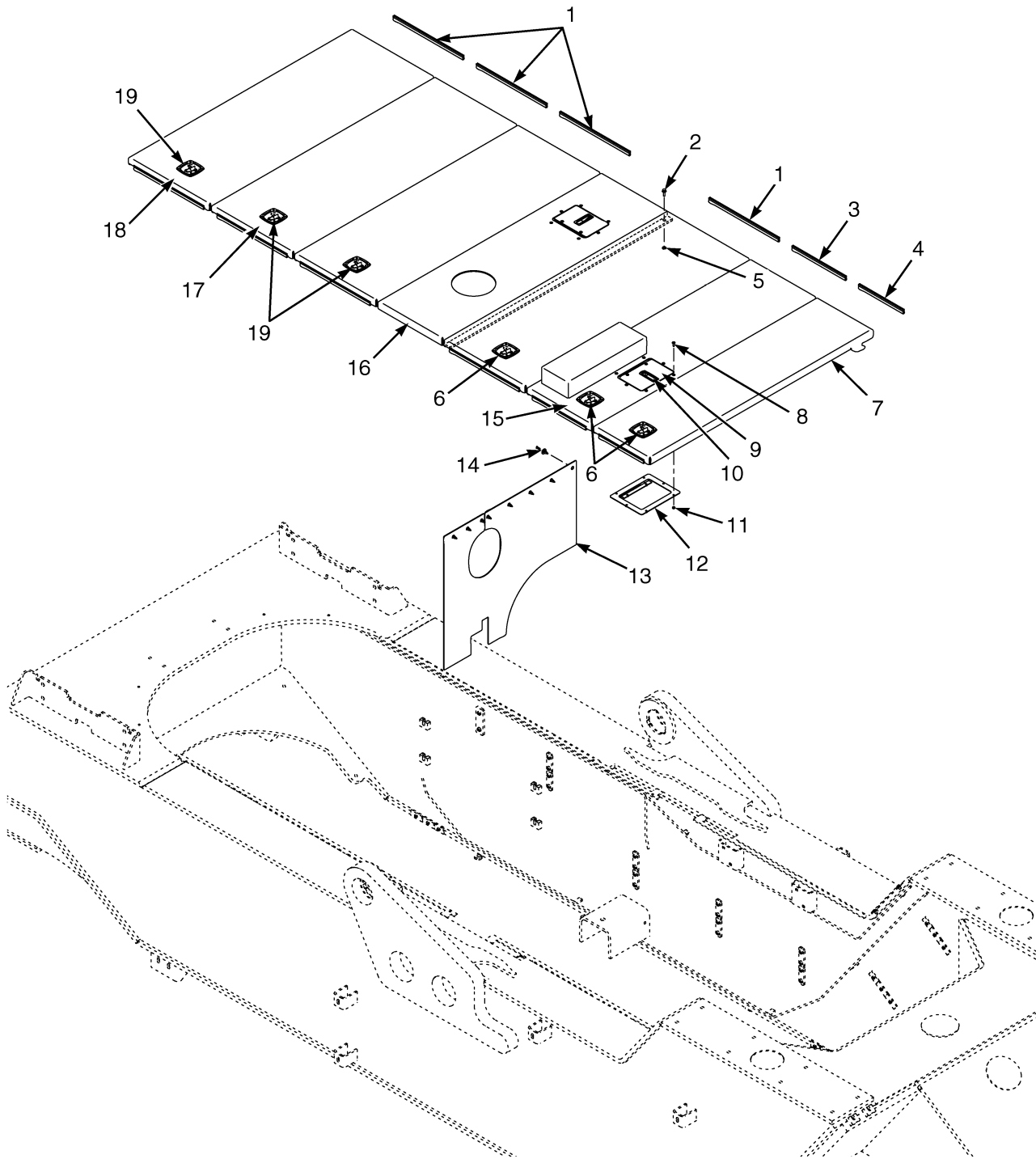
TABLE OF CONTENTS (Continued)

| DESCRIPTION | PAGE |
|---------------------------------|-------|
| W | |
| WATER PUMP..... | 2-104 |
| WATER SEPERATOR..... | 3-16 |
| WEAR PADS | |
| SERIES 813 AND 818 | 11-10 |
| WHEEL AND DRIVE PLATE | |
| C290, 36000 SERIES | 5-24 |
| WINDOW INSTALLATION | 1-54 |
| WINDOW WIPER SYSTEM | |
| SHEET 1 OF 2..... | 1-56 |
| SHEET 2 OF 2..... | 1-58 |
| WIRE HARNESS | |
| ARMREST | 4-64 |
| CAB LIGHT | 4-56 |
| CHASSIS | 4-32 |
| CLOSED CAB | |
| PENDING PER ECN 68161-65⇒ | 4-52 |
| ⇒PENDING PER ECN 68161-65 | 4-50 |
| FRONT LIGHTS..... | 4-68 |
| JOYSTICK | |
| ⇒PENDING PER ECN 68161-65 | 4-66 |
| JUMPER | 4-58 |
| LIGHT SWITCH | |
| SHEET 1 | 4-47 |
| SHEET 2 | 4-48 |
| LUBRICATION PUMP..... | 4-46 |
| POWER PILE SLOPE | |
| MAST | 4-40 |
| SOLENOID VALVE..... | 4-41 |
| REAR..... | 4-37 |
| REAR WIPER | 4-54 |
| ROTATING BEACON | 4-44 |
| SIDE CONSOLE | |
| SHEET 1 OF 2 | |
| ⇒PENDING PER ECN 68161-65..... | 4-70 |
| SHEET 2 OF 2 | |
| ⇒PENDING PER ECN 68161-65..... | 4-74 |
| STAIR LIGHT | 4-45 |
| STEERING COLUMN..... | 4-59 |
| SWITCHES..... | 4-42 |
| TRANSMISSION | |
| T36000 SERIES | 4-35 |
| T40000 SERIES..... | 4-36 |
| UNDER FLOOR | |
| ⇒PENDING PER ECN 68161-65 | 4-62 |
| WASH PUMPS | 4-38 |
| WIRING ACCESSORIES | |
| ELECTRONIC CONTROL MODULE..... | 2-108 |

SECTION 1
FRAME

| DESCRIPTION | PAGE |
|---|-------------|
| AIR CONDITIONING SYSTEM | 1-42 |
| ARMREST ASSEMBLY | |
| SEAT | 1-40 |
| CAB ATTACHING PARTS | 1-16 |
| CAB FLOORMATS | 1-24 |
| CAB MOUNT | 1-14 |
| CAB PANELS | 1-30 |
| CAB SOUND REDUCTION | 1-26 |
| CONDENSER..... | 1-46 |
| COUNTERWEIGHT | 1-10 |
| FABRICATED..... | 1-12 |
| COVERS | 1-2 |
| DOOR ATTACHING PARTS | 1-18 |
| FLOORPLATES, STEPS, AND RAILS | 1-4 |
| HEATER AND AIR CONDITIONER ASSEMBLY | 1-50 |
| HEATER AND AIR CONDITIONER MOUNT | 1-48 |
| HEATER ASSEMBLY | 1-52 |
| HEATER HOSE ARRANGEMENT | 1-44 |
| LABELS | 1-60 |
| MIRRORS | |
| FRONT FENDER..... | 1-8 |
| PIVOT ARM ASSEMBLY | 1-38 |
| SEAT ASSEMBLY | |
| AIR..... | 1-36 |
| MECHANICAL | 1-34 |
| STEEL DOOR | |
| LEFT HAND..... | 1-22 |
| RIGHT HAND..... | 1-20 |
| TRAINING SEAT | 1-32 |
| UNDERFLOOR COVER MOUNT..... | 1-28 |
| WINDOW INSTALLATION | 1-54 |
| WINDOW WIPER SYSTEM | |
| SHEET 1 OF 2..... | 1-56 |
| SHEET 2 OF 2..... | 1-58 |

COVERS (Figure 1-1)

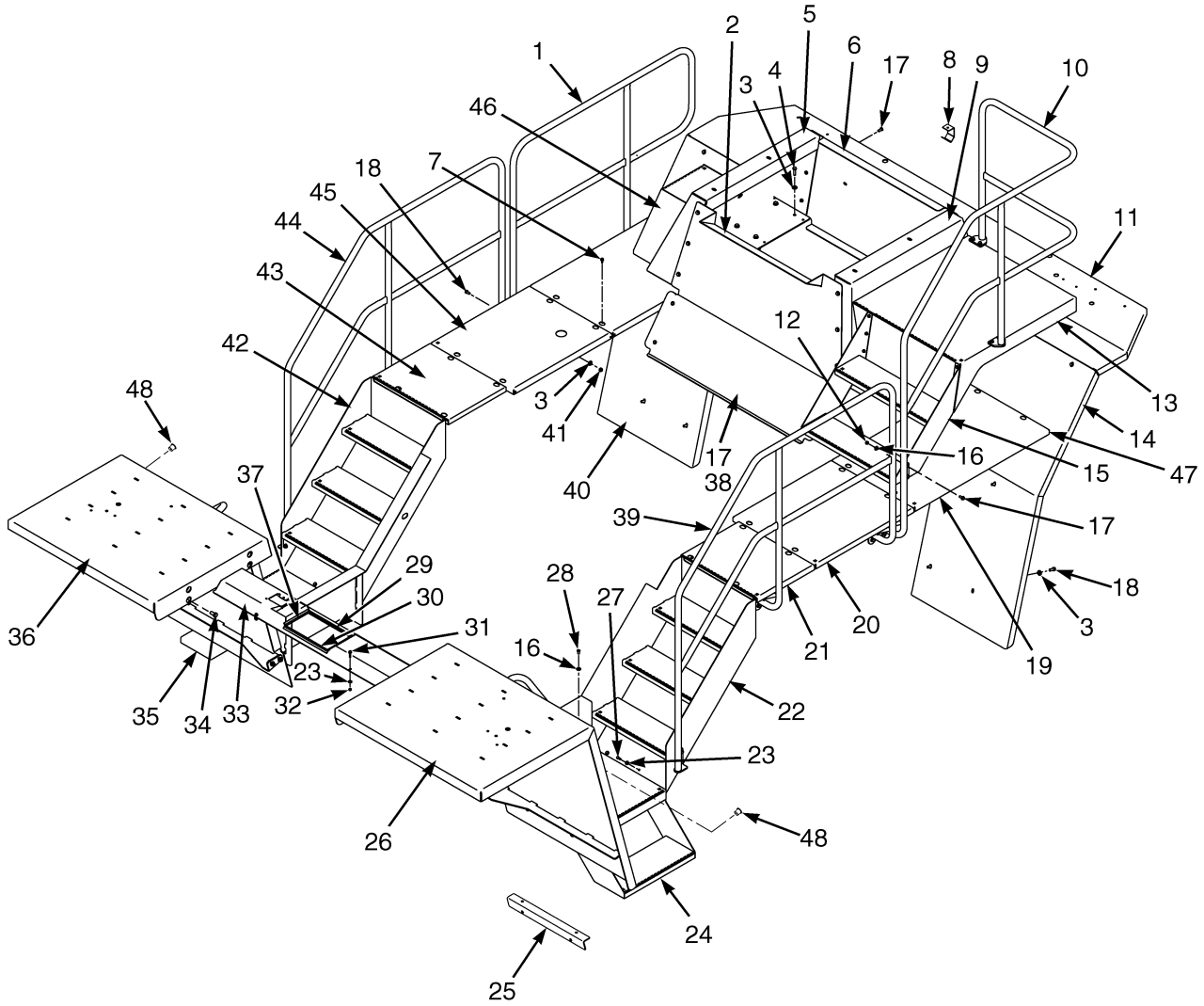


HP120747

COVERS

| ITEM | PART NO. | DESCRIPTION | QTY |
|------|----------|---|-----|
| 1 | 1553193 | Trim Seal..... | 8 |
| 2 | 132861 | Capscrew..... | 4 |
| 3 | 1553194 | Trim Seal..... | 2 |
| 4 | 1553195 | Trim Seal..... | 2 |
| 5 | 320158 | Washer | 4 |
| 6 | 1553504 | Latch (Locking) | 3 |
| 7 | 1552308 | Cover (Rear) | 1 |
| 8 | 296216 | Capscrew..... | 16 |
| 9 | 1539435 | Plate | 2 |
| 10 | 1530513 | Latch..... | 2 |
| 11 | 302399 | Nut | 16 |
| 12 | 1539438 | Bracket..... | 2 |
| 13 | 1560453 | Screen (Turbo Protection)..... | 1 |
| 14 | 1484308 | Rivet..... | 8 |
| 15 | 1552305 | Cover (Engine)..... | 1 |
| 16 | 1574132 | Cover (Pre-Cleaner) | 1 |
| 17 | 1552303 | Cover (Intermediate)..... | 3 |
| 18 | 1552500 | Cover (Front)..... | 1 |
| 19 | 1553505 | Latch (Non-Locking) | 3 |
| | 1608885 | Dust Cover (Under Engine) (Not Illusrated)..... | 3 |
| | 320158 | Washer (Not Illusrated) | 12 |
| | 176640 | Capscrew (Not Illusrated) | 12 |

FLOORPLATES, STEPS, AND RAILS (Figure 1-2)



HP120748

FLOORPLATES, STEPS, AND RAILS

| ITEM | PART NO. | DESCRIPTION | QTY |
|------|-----------|----------------------------------|-----|
| 1 | 1518664 | Railing (RH) (Rear)..... | 1 |
| 2 | 1548749 | Plate (Front)..... | 1 |
| 3 | 320162 | Washer | 72 |
| 4 | 292531 | Capscrew..... | 16 |
| 5 | 1579869 | Support (RH) (Cab) | 1 |
| 6 | 1518652 | Plate (Rear) | 1 |
| 7 | 136681 | Capscrew..... | 24 |
| 8 | 1545536 | Bracket (Rear Cover)..... | 2 |
| 9 | 1537156 | Support (LH) (Cab)..... | 1 |
| 10 | 1518634 | Railing (LH) (Rear) | 1 |
| 11 | 1545533 | Cover (Counterweight)..... | 1 |
| 12 | 302401 | Locknut | 22 |
| 13 | 1518619 | Platform | 1 |
| 14 | 1518660 | Fender (LH) (Rear) | 1 |
| 14 | a 1566268 | Fender (LH) (Rear) | 1 |
| 15 | 1518614 | Step (LH) (Upper Platform)..... | 1 |
| 16 | 320160 | Washer | 56 |
| 17 | 136985 | Capscrew..... | 34 |
| 18 | 246001 | Capscrew..... | 34 |
| 19 | 1536247 | Cover (LH Rear) | 2 |
| 20 | 1536246 | Cover (LH Intermediate)..... | 1 |
| 21 | 1553925 | Plate (LH) | 1 |
| 22 | 1543047 | Step (LH) | 1 |
| 23 | 320158 | Washer | 58 |
| 24 | 1546609 | Platform (LH) | 1 |
| 25 | 1546615 | Bracket (Front)..... | 2 |
| 26 | 1558232 | Fender (LH) (Front)..... | 1 |
| 27 | 176640 | Capscrew..... | 20 |
| 28 | 296172 | Capscrew..... | 4 |
| 29 | 1532378 | Trim | 1 |
| 30 | 1532236 | Trim | 1 |
| 31 | 1528482 | Capscrew..... | 4 |
| 32 | 302400 | Locknut | 10 |
| 33 | 1532235 | Cover (Manifold) | 1 |
| 34 | 292562 | Capscrew..... | 8 |
| 35 | 1546608 | Platform (RH)..... | 1 |
| 36 | 1558231 | Fender (RH) (Front) | 1 |
| 37 | 1532379 | Trim | 2 |
| 38 | 1552309 | Plate | 1 |
| 39 | 1525375 | Railing (LH) (Front) | 1 |
| 40 | 1518659 | Fender (RH) (Rear)..... | 1 |
| 40 | a 1566269 | Fender (RH) (Rear)..... | 1 |
| 41 | 302402 | Locknut | 22 |
| 42 | 1543048 | Step (RH)..... | 1 |
| 43 | 1525369 | Plate (RH)..... | 1 |
| 44 | 1518663 | Railing (RH) (Front) | 1 |
| 45 | 1547417 | Cover (RH Intermediate)..... | 1 |
| 46 | 1518607 | Step (RH) (Upper Platform) | 1 |

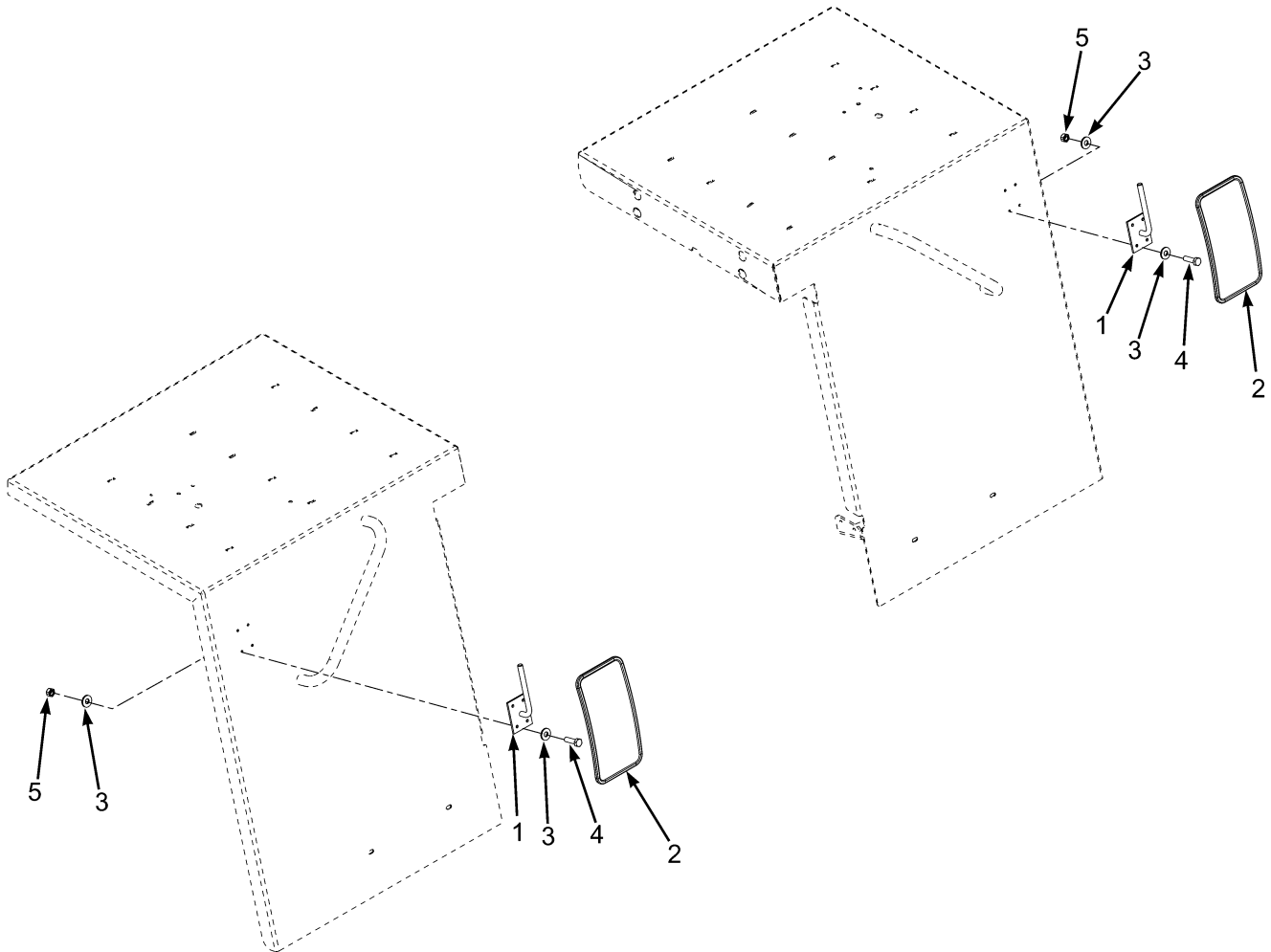
FLOORPLATES, STEPS, AND RAILS

| ITEM | PART NO. | DESCRIPTION | QTY |
|------|----------|-----------------------------|-----|
| 47 | 1570559 | Cover (Plate)..... | 1 |
| 48 | 1494868 | Plug (Without Mirrors)..... | 8 |

FOOTNOTES:

- a Fabricated Type

MIRRORS (Figure 1-3) FRONT FENDER

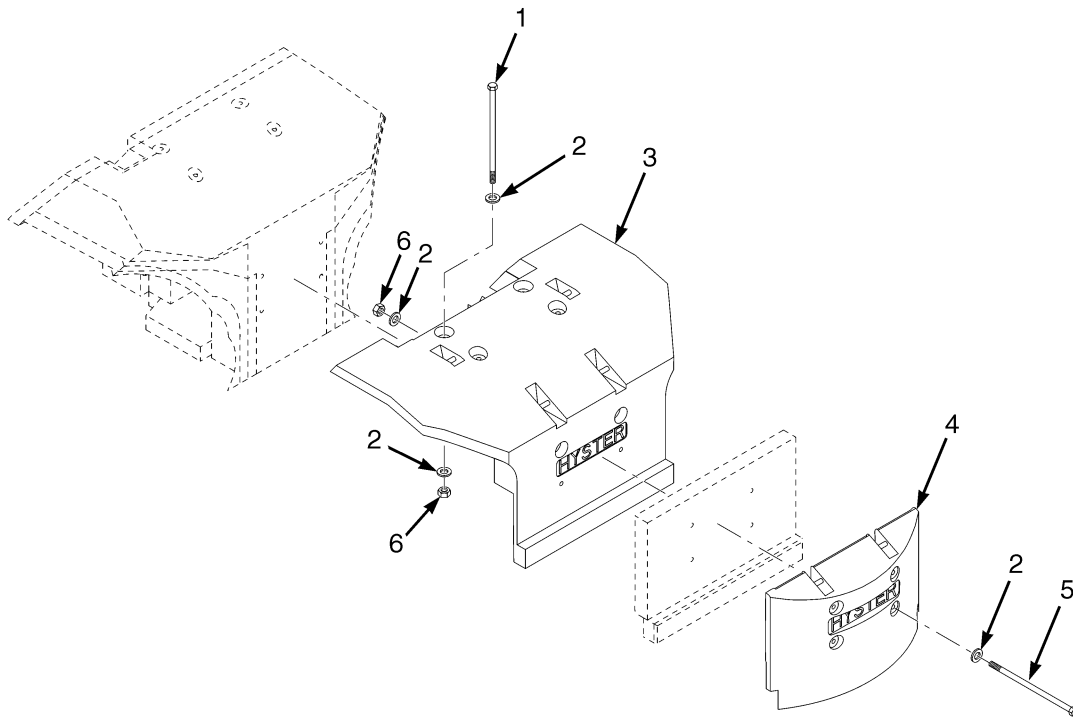


HP120847

**MIRRORS
FRONT FENDER**

| ITEM | PART NO. | DESCRIPTION | QTY |
|------|----------|---------------|-----|
| 1 | 1598029 | Bracket..... | 2 |
| 2 | 886835 | Mirror | 2 |
| 3 | 320158 | Washer | 16 |
| 4 | 176640 | Capscrew..... | 8 |
| 5 | 302400 | Locknut | 8 |

COUNTERWEIGHT (Figure 1-4)

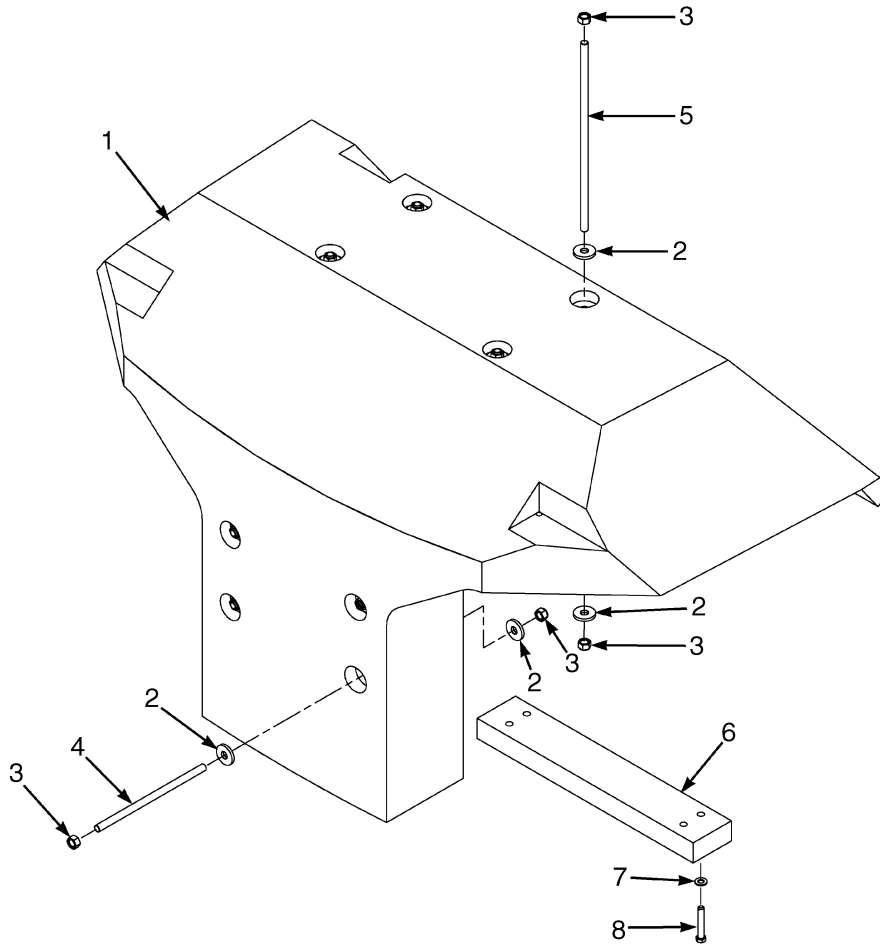


HP120749

- KEY:**
A: H40.00XM-16CH
B: H50.00XM-16CH
C: H52.00XM-16CH

| ITEM | PART NO. | DESCRIPTION | QTY | | |
|------|----------|---------------------|-----|----|----|
| | | | A | B | C |
| 1 | 885190 | Tie Rod | 4 | 4 | 4 |
| 2 | 885189 | Washer | 12 | 16 | 16 |
| 3 | 889034 | Counterweight | 1 | 1 | 1 |
| 4 | 885149 | Counterweight | .. | 1 | .. |
| 4 | 1542507 | Counterweight | .. | .. | 1 |
| 5 | 885191 | Tie Rod | 2 | .. | .. |
| 5 | 885194 | Tie Rod | .. | 4 | 4 |
| 6 | 302407 | Locknut | 6 | 8 | 8 |

COUNTERWEIGHT (Figure 1-5) FABRICATED

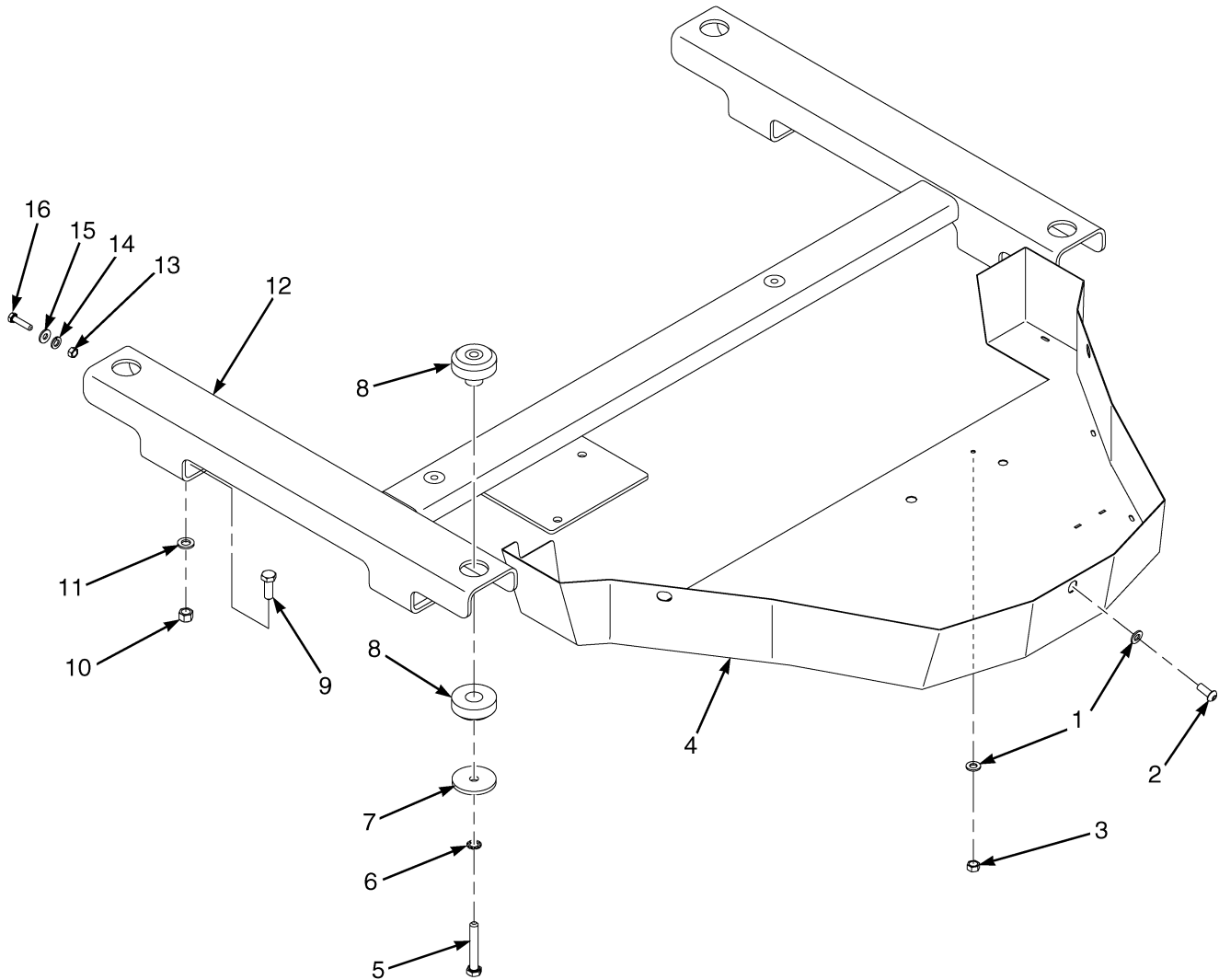


HP120751

**COUNTERWEIGHT
FABRICATED****KEY:****A: H40.00XM-16CH****B: H44.00XM-16CH****C: H48.00XM-16CH****D: H50,00XM-16CH**

| ITEM | PART NO. | DESCRIPTION | QTY | | | |
|------|----------|---------------------|-----|----|----|----|
| | | | A | B | C | D |
| 1 | 1564340 | Counterweight | .. | 1 | 1 | .. |
| 1 | 1571608 | Counterweight | 1 | .. | .. | .. |
| 1 | 1588372 | Counterweight | .. | .. | .. | 1 |
| 2 | 885189 | Washer | 16 | 16 | 16 | 16 |
| 3 | 292661 | Nut | 8 | 8 | 8 | 8 |
| 4 | 1566260 | Tie Rod | 4 | 4 | 4 | 4 |
| 5 | 1566262 | Tie Rod | 4 | 4 | 4 | 4 |
| 6 | 1564348 | Slab | .. | .. | 1 | 1 |
| 7 | 320174 | Washer | .. | .. | 4 | 4 |
| 8 | 292614 | Capscrew..... | .. | .. | 4 | 4 |
| 8 | 292617 | Capscrew..... | .. | .. | .. | 4 |

CAB MOUNT (Figure 1-6)

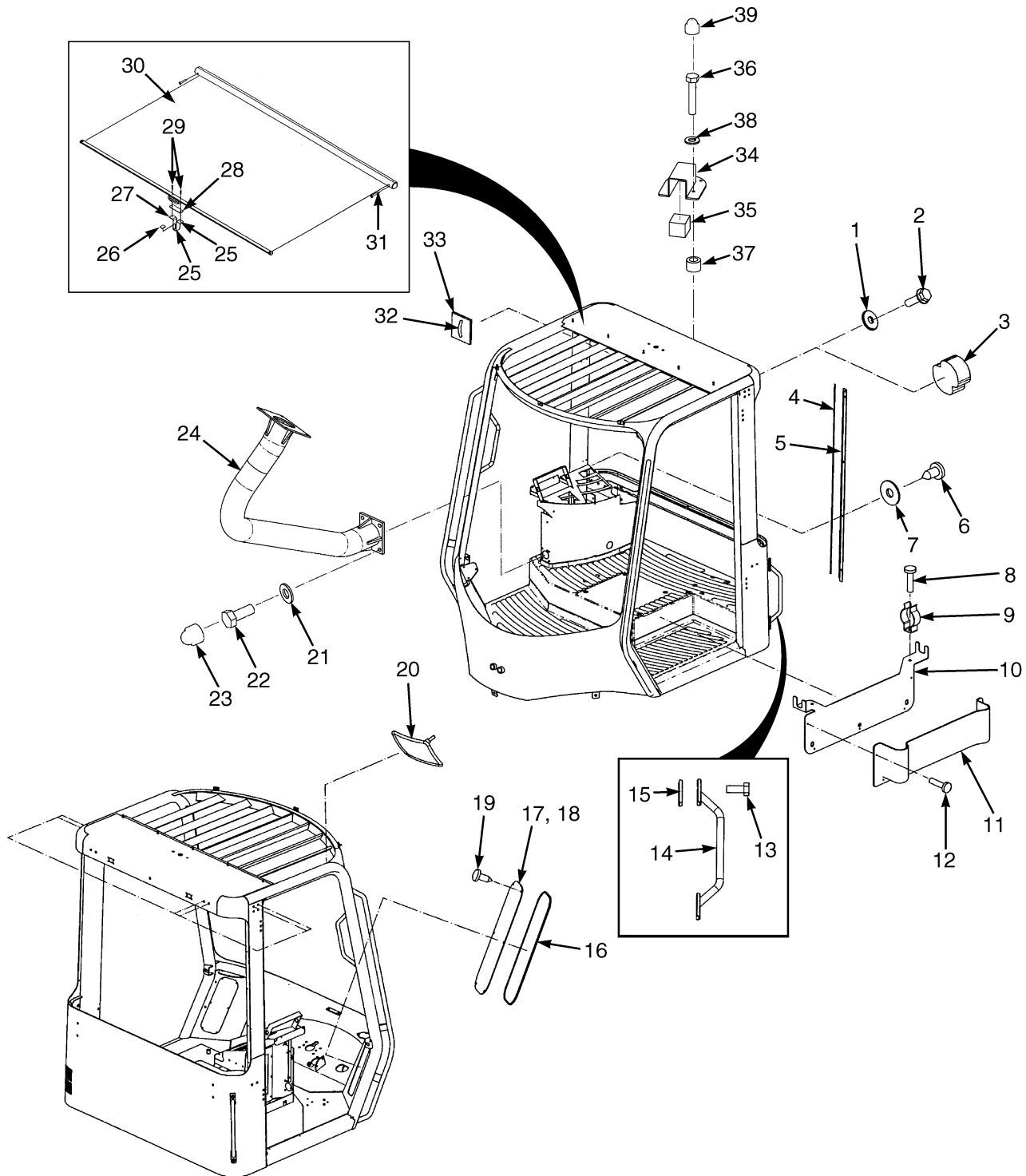


HP120766

CAB MOUNT

| ITEM | PART NO. | DESCRIPTION | QTY |
|------|----------|---------------------|-----|
| 1 | 320159 | Washer | 4 |
| 2 | 296173 | Capscrew..... | 3 |
| 3 | 136692 | Nut | 1 |
| 4 | 1527224 | Cover Assembly..... | 1 |
| 5 | 292535 | Capscrew..... | 4 |
| 6 | 296382 | Washer | 4 |
| 7 | 300939 | Washer | 4 |
| 8 | 1486540 | Mount..... | 4 |
| 9 | 292528 | Capscrew..... | 4 |
| 10 | 216877 | Nut | 4 |
| 11 | 320162 | Washer | 4 |
| 12 | 1527225 | Subframe | 1 |
| 13 | 302401 | Locknut | 1 |
| 14 | 320160 | Washer | 1 |
| 15 | 296408 | Lockwasher..... | 1 |
| 16 | 1510117 | Capscrew..... | 1 |

CAB ATTACHING PARTS (Figure 1-7)

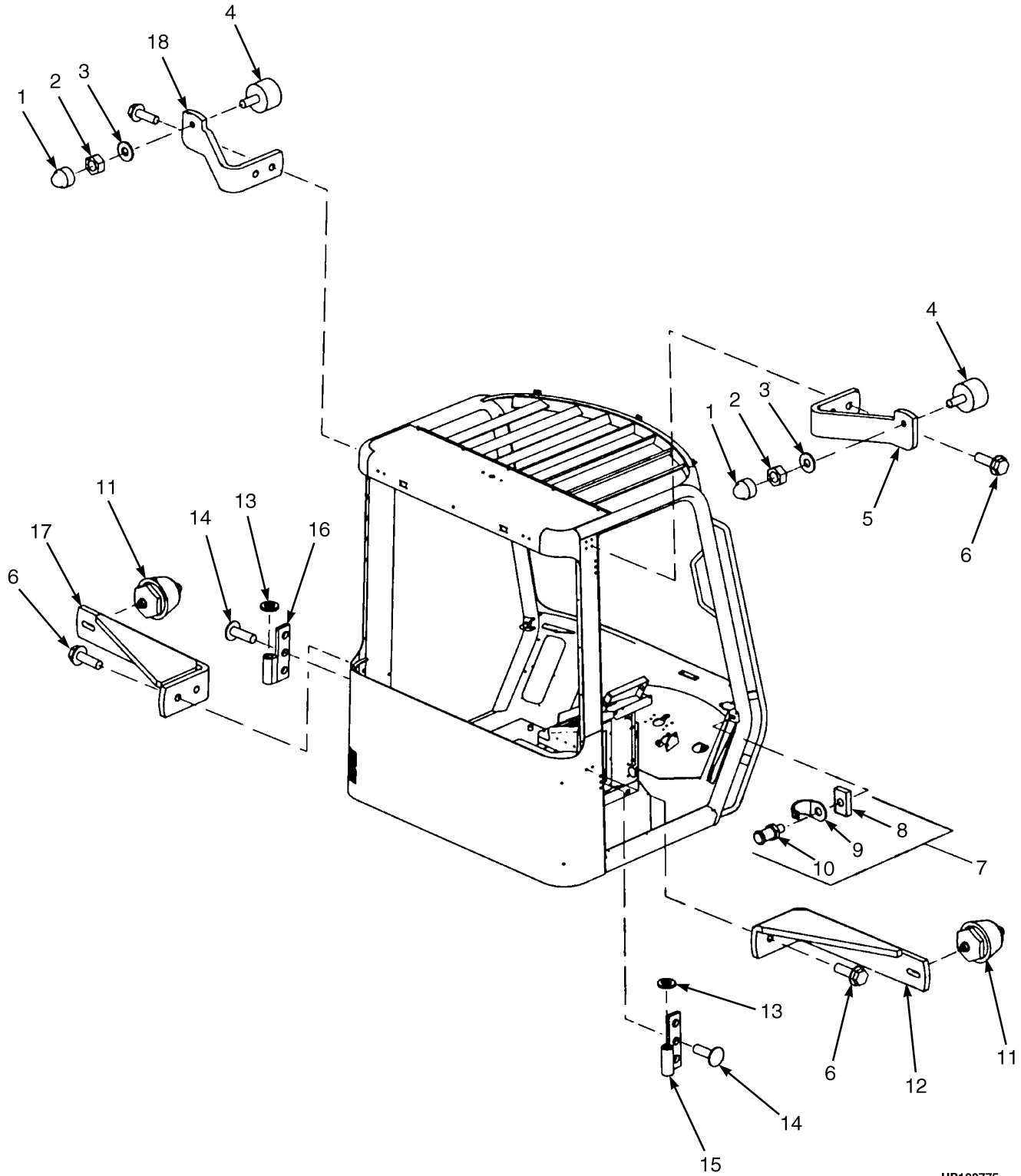


HP120785

CAB ATTACHING PARTS

| ITEM | PART NO. | DESCRIPTION | QTY |
|------|----------|--------------------------------|-----|
| 1 | 1504942 | Washer | 8 |
| 2 | 1566044 | Bolt | 8 |
| 3 | 1558037 | Seal | 2 |
| 4 | 1492167 | Cover | 1 |
| 5 | 1492166 | Cover | 1 |
| 6 | 1468306 | Screw..... | 5 |
| 7 | 1492140 | Washer | 5 |
| 8 | 1498357 | Screw..... | 2 |
| 9 | 1498356 | Clip | 2 |
| 10 | 1498355 | Bracket..... | 1 |
| 11 | 1492133 | Cup and Clip Board Holder..... | 1 |
| 12 | 1498354 | Rivet..... | 5 |
| 13 | 1566041 | Screw..... | 4 |
| 14 | 1498334 | Handle (Rear)..... | 2 |
| 14 | 136681 | Capscrew | 4 |
| 14 | 320158 | Washer | 4 |
| 14 | 1476584 | Cap..... | 4 |
| 15 | 1498335 | Pad | 4 |
| 16 | 1498362 | Seal | AR |
| 17 | 1492197 | Plate (LH) | 1 |
| 18 | 1492198 | Plate (RH)..... | 1 |
| 19 | 1498363 | Screw..... | 12 |
| 20 | 1493278 | Mirror (Interior)..... | 2 |
| 21 | 296419 | Washer | 4 |
| 22 | 136749 | Capscrew..... | 4 |
| 23 | 1476584 | Cap | 4 |
| 24 | 1571812 | Handle | 1 |
| 25 | 1493322 | Adhesive..... | AR |
| 26 | 1506748 | Pad (Rubber) | 1 |
| 27 | 1506750 | Clamp | 1 |
| 28 | 1506749 | Pad (Rubber) | 1 |
| 29 | 1498357 | Screw..... | 2 |
| 30 | 1506751 | Sunshade (Top) | 1 |
| 30 | 1570557 | Sunshade (Rear) | 1 |
| 31 | 1468318 | Screw..... | 2 |
| 32 | 1393499 | Clamp | 1 |
| 33 | 1558036 | Clip | 1 |
| 34 | 1571804 | Bracket..... | 1 |
| 35 | 1571803 | Foam..... | AR |
| 36 | 1571802 | Screw..... | 4 |
| 37 | 1571841 | Spacer | 4 |
| 38 | 320156 | Washer | 8 |
| 39 | 1493397 | Cover | 4 |

DOOR ATTACHING PARTS (Figure 1-8)

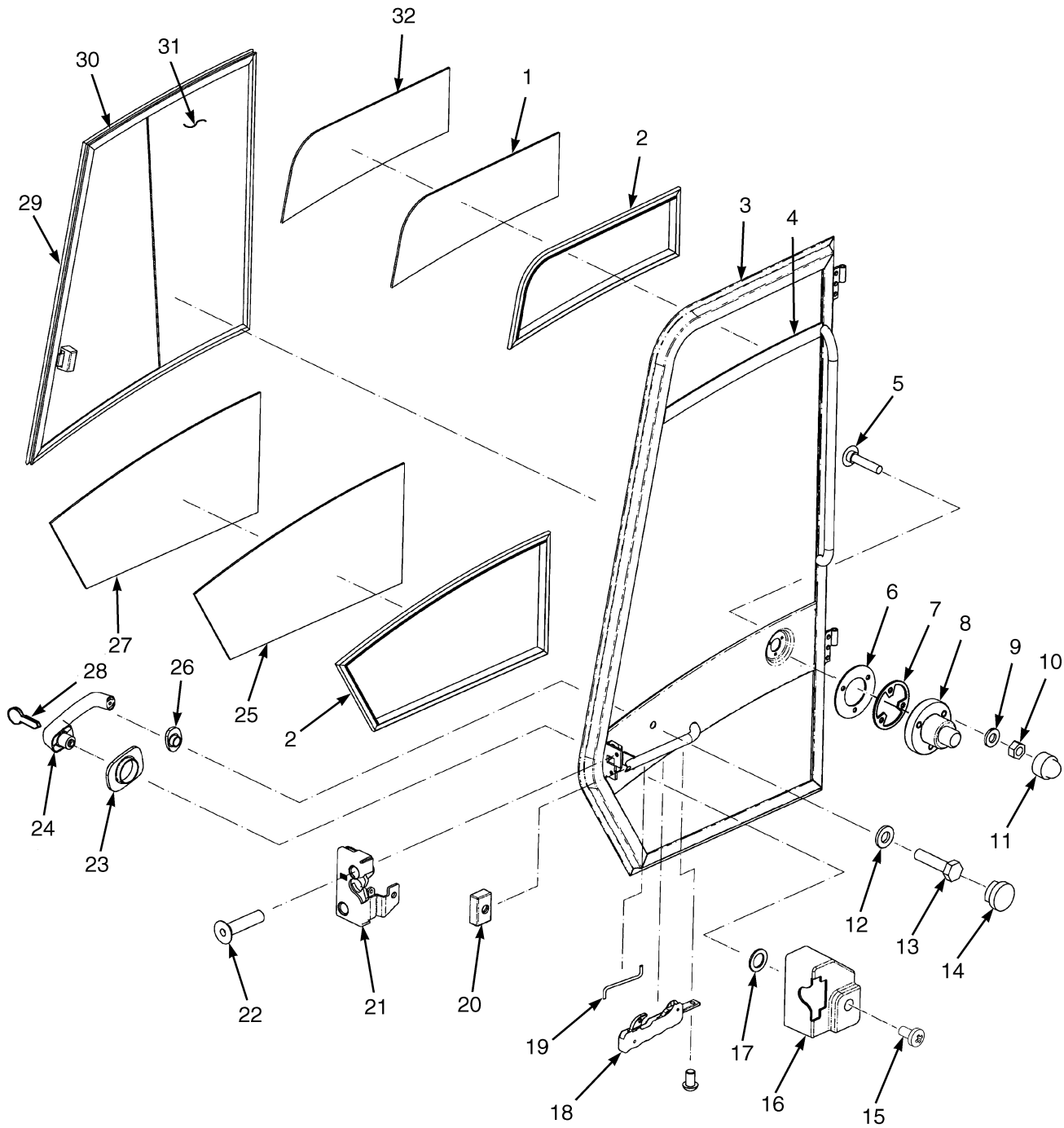


HP120775

DOOR ATTACHING PARTS

| ITEM | PART NO. | DESCRIPTION | QTY |
|------|----------|-------------------------------|-----|
| 1 | 1476584 | Cap | 2 |
| 2 | 316835 | Nut | 2 |
| 3 | 1571029 | Washer | 2 |
| 4 | 1493316 | Bumper | 2 |
| 5 | 1571616 | Bracket (RH) | 1 |
| 6 | 1566044 | Bolt | 8 |
| 7 | 1493318 | Bolt Assembly (Striker) | 2 |
| 8 | 1504953 | Block | 1 |
| 9 | 1504954 | Guard (Striker Bolt) | 1 |
| 10 | 1504955 | Bolt (Striker) | 1 |
| 11 | 1493313 | Bumper | 2 |
| 12 | 1571618 | Bracket (RH) | 1 |
| 13 | 1468312 | Washer | 4 |
| 14 | 1493308 | Bolt | 12 |
| 15 | 1393474 | Hinge (RH) | 2 |
| 16 | 1393473 | Hinge (LH) | 2 |
| 17 | 1571619 | Bracket (LH) | 1 |
| 18 | 1571617 | Bracket (LH) | 1 |

STEEL DOOR (Figure 1-9) RIGHT HAND



HP120796

Thank you so much for reading.
Please click the “Buy Now!”
button below to download the
complete manual.



After you pay.

You can download the most
perfect and complete manual in
the world immediately.

Our support email:

ebooklibonline@outlook.com