

PARTS MANUAL

HYSTER

**E2.00-3.20XM
(G108)**

CUSTOMER EDITION

HYSTER

SECTIONS

1	FRAME
2	ELECTRICAL SYSTEM
3	DRIVE UNIT
4	STEERING SYSTEM
5	BRAKE/ACCELERATOR SYSTEM
6	HYDRAULIC SYSTEM
7	MAST-TWO STAGE LIMITED FREE-LIFT
8	MAST-THREE STAGE FULL FREE-LIFT
9	MAST-TWO STAGE FULL FREE-LIFT
10	OPTIONS
11	NUMERICAL INDEX

TABLE OF CONTENTS

DESCRIPTION	PAGE
A	
ACCELERATOR	5-12
AUXILIARY TUBES	
TWO AND THREE STAGE FULL FREE-LIFT	
FOUR FUNCTION GROUP	10-14
B	
BACKUP ALARM	10-24
BRAKE	5-6
BRAKE AND BACKUP LIGHT	10-16
BRAKE PEDAL LINKAGE	5-2
C	
CARRIAGE	
SIX ROLLER	
THREE STAGE FULL FREE-LIFT	8-26
TWO STAGE FULL FREE-LIFT	9-18
TWO STAGE LIMITED FREE-LIFT	7-14
CONTACTOR	
LINE	2-12
POWER STEERING	2-14
CONTACTOR PANEL	
CONTACTOR (LINE AND POWER STEERING)	2-10
CONTACTOR HYDRAULIC	2-16
CONTROL PANEL	
CONTACTOR HYDRAULIC	2-8
TRACTION AND PUMP CONTROLLER	2-6
CONTROL VALVE	
FOUR FUNCTION	6-26
THREE FUNCTION	6-22
CONTROL VALVE AND ATTACHING PARTS	6-16
COUNTERWEIGHT	1-16
COVERS	1-8
COWL AND FLOOR PLATES	1-4
D	
DASH DISPLAY	2-5
DC CONVERTOR	
72/80 VOLT TO 12 VOLT	10-22
DRIVE AND REAR LIGHTS	10-18
DRIVE AXLE	3-2
E	
ELECTRICAL	2-2
F	
FORK	
E2.00-2.50XM	1-28
E3.00-3.20XM	1-30
FREE LIFT	
E2.00-3.00XM	

TABLE OF CONTENTS (Continued)

DESCRIPTION	PAGE
F (continued)	
TWO STAGE FULL FREE-LIFT	9-8
E3.20XM	
TWO STAGE FULL FREE-LIFT	9-10
FREE-LIFT	
THREE STAGE FULL FREE-LIFT	8-12
FREE-LIFT CYLINDER	
THREE STAGE FULL FREE-LIFT	8-22
TWO STAGE FULL FREE-LIFT	9-16
FULL SUSPENSION SEAT	
SHEET 1 OF 2	1-20
SHEET 2 OF 2	1-22
G	
GEAR PUMP	4-12
GENERAL TRUCK	1-2
H	
HAND LEVER.....	6-20
HEADER HOSE	
THREE STAGE FULL FREE-LIFT	8-28
TWO STAGE FULL FREE-LIFT	9-20
TWO STAGE LIMITED FREE-LIFT.....	7-16
HOOD.....	1-10
HYDRAULIC	6-2
HYDRAULIC HOSES	
THREE STAGE FULL FREE-LIFT	10-11
TWO STAGE FULL FREE-LIFT	10-12
TWO STAGE LIMITED FREE-LIFT.....	10-10
HYDRAULIC MOTOR MOUNT.....	6-10
HYDRAULIC PUMP	
19 CC.....	6-6
19 CC PUMP - LOW NOISE	
OPTIONAL	6-8
HYDRAULIC PUMP MOTOR	
72/80 VOLT A/C	6-12
72/80 VOLT D/C	6-14
HYDRAULIC TANK.....	6-30
I	
INNER MAST	
THREE STAGE FULL FREE-LIFT	8-6
TWO STAGE FULL FREE-LIFT	9-4
TWO STAGE LIMITED FREE-LIFT.....	7-4
INTEGRAL SIDE-SHIFT	
CARRIAGE	
THREE STAGE FULL FREE-LIFT	10-4
TWO STAGE FULL FREE-LIFT	10-6
TWO STAGE LIMITED FREE-LIFT.....	10-2
INTEGRAL SIDE-SHIFT CYLINDER	10-8

TABLE OF CONTENTS (Continued)

DESCRIPTION	PAGE
I (continued)	
INTERMEDIATE	
THREE STAGE FULL FREE-LIFT	8-4
L	
LABELS	1-24
LIFT	
TWO STAGE LIMITED FREE-LIFT	7-6
LIFT CYLINDER	
E2.00-2.50XM	
TWO STAGE LIMITED FREE-LIFT	7-9
E3.00-3.20XM	
TWO STAGE LIMITED FREE-LIFT	7-11
LOAD BACKREST	1-26
M	
MAIN CYLINDER	
THREE STAGE FULL FREE-LIFT	
LEFT HAND	8-18
RIGHT HAND	8-15
MAIN LIFT	
THREE STAGE FULL FREE-LIFT	8-8
TWO STAGE FULL FREE-LIFT	9-6
MAIN LIFT CYLINDER	
LEFT HAND	
TWO STAGE FULL FREE-LIFT	9-12
RIGHT HAND	
TWO STAGE FULL FREE-LIFT	9-14
MAST INSTALLATION	6-34
MASTER CYLINDER	5-4
MONOTROL PEDAL	5-14
O	
OUTER MAST	
THREE STAGE FULL FREE-LIFT	8-2
TWO STAGE FULL FREE-LIFT	9-2
TWO STAGE LIMITED FREE-LIFT	7-2
OVERHEAD GUARD	1-14
P	
PARK BRAKE LINKAGE	
LEVER ACTUATED	5-8
S	
SEMI-SUSPENSION SEAT	1-18
SHIFT LEVER	4-4
STEERING AXLE	4-16
STEERING CONTROL UNIT	4-6
STEERING CYLINDER	4-10
STEERING HYDRAULIC	4-8

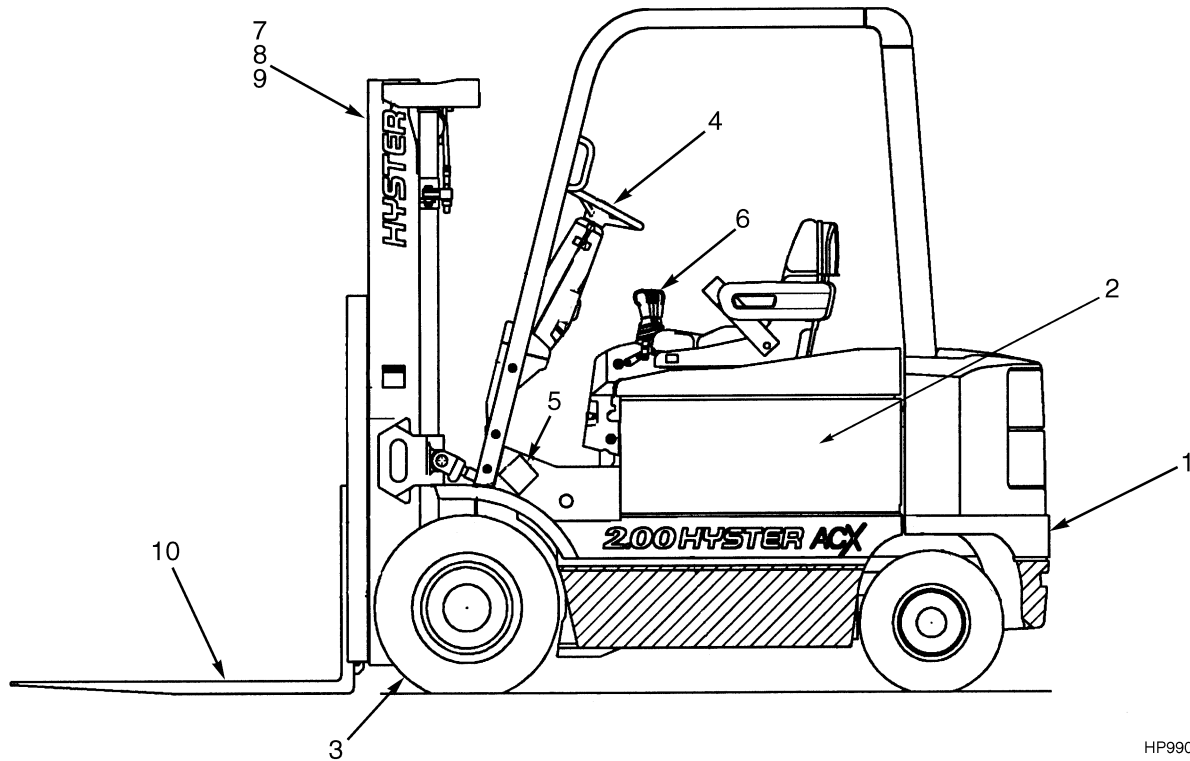
TABLE OF CONTENTS (Continued)

DESCRIPTION	PAGE
S (continued)	
STEERING MOTOR	4-14
STEERING POD	4-2
STROBE LIGHT	10-20
T	
TILT CYLINDER	6-32
TIRE AND WHEEL	
DRIVE WHEEL	3-10
STEER WHEEL	4-18
TRACTION MOTOR	
72/80 VOLT	3-8
TRANSMISSION AND DIFFERENTIAL	3-4
W	
WIRE HARNESS	
FRONT LIGHTS	10-28
LIGHT	2-20
LIGHTS	10-26
MAIN	2-18
REAR LIGHTS	10-29

**SECTION 1
FRAME**

DESCRIPTION	PAGE
COUNTERWEIGHT	1-16
COVERS	1-8
COWL AND FLOOR PLATES	1-4
FORK	
E2.00-2.50XM	1-28
E3.00-3.20XM	1-30
FULL SUSPENSION SEAT	
SHEET 1 OF 2	1-20
SHEET 2 OF 2	1-22
GENERAL TRUCK	1-2
HOOD	1-10
LABELS	1-24
LOAD BACKREST	1-26
OVERHEAD GUARD	1-14
SEMI-SUSPENSION SEAT	1-18

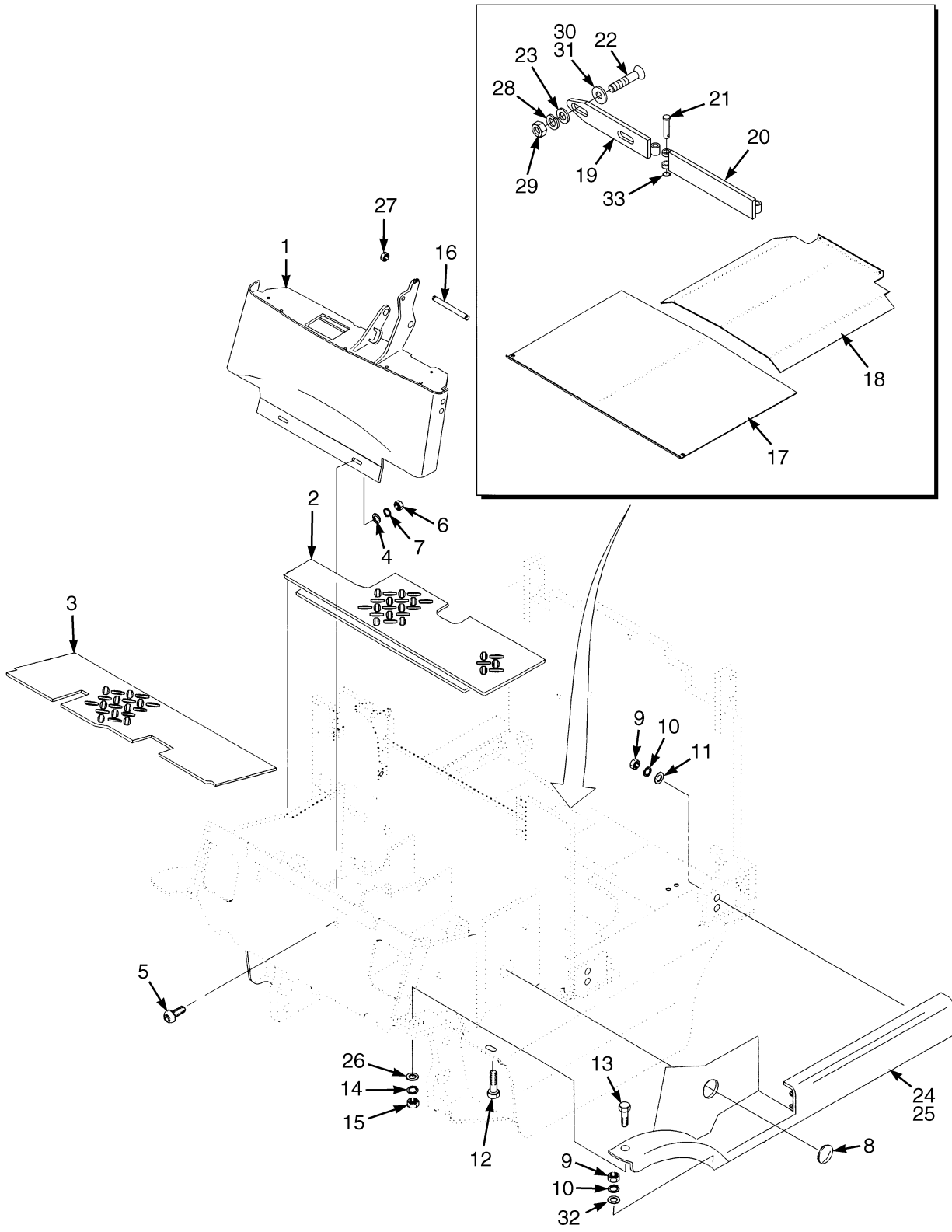
GENERAL TRUCK (Figure 1-1)



HP990018

ITEM	PART NO.	DESCRIPTION	QTY
1	Cowls and Floorplates (☞ Figure 1-2)
2	Electrical System (☞ Figure 2-1)
3	Drive Unit (☞ Figure 3-1)
4	Steering System (☞ Figure 4-1)
5	Brake and Accelerator (☞ Figure 5-1)
6	Hydraulic System (☞ Figure 6-1)
7	Mast-Two Stage Limited Free-Lift (☞ Figure 7-1)
8	Mast-Two Stage Full Free-Lift (☞ Figure 9-1)
9	Mast-Three Stage Full Free-Lift (☞ Figure 8-1)
10	Forks (☞ Figure 1-12, ☞ Figure 1-13)

COWL AND FLOOR PLATES (Figure 1-2)



HP120743

COWL AND FLOOR PLATES**KEY:****A: 700 mm Battery Compartment****B: 847 mm Battery Compartment****C: 1015 mm Battery Compartment**

ITEM	PART NO.	DESCRIPTION	QTY		
			A	B	C
1	1551686	Cowl.....	1	1	1
2	2065843	Floorplate.....	1	1	1
3	1551791	Floorplate.....	1	1	1
4	15176	Washer	4	4	4
5	17105	Bolt	2	2	2
6	15056	Nut	2	2	2
7	15156	Lockwasher.....	2	2	2
8	1350231	Plug	2	2	2
9	136692	Nut	6	6	6
10	292682	Lockwasher.....	6	6	6
11	86936	Washer	2	2	2
12	136985	Capscrew.....	2	2	2
13	292529	Capscrew.....	2	2	2
14	292683	Lockwasher.....	2	2	2
15	216877	Nut	2	2	2
16	18494	Capscrew.....	1	1	1
17	1340222	Cover	1	..
17	1340224	Cover	1
17	1340220	Cover	1
18	325521	Cover	1	1	1
19	1493955	Plate	1	1	1
20	1493957	Plate	1	1	1
21	1509942	Pin	2	2	2
22	296249	Capscrew.....	2	2	2
23	296421	Washer	2	2	2
24	1550790	Step (LH)	1
24	a 1550793	Step (LH)	1
24	1550791	Step (LH)	1	..
24	a 1550794	Step (LH)	1	..
24	1550792	Step (LH)	1
24	a 1550795	Step (LH)	1
25	1550797	Step (RH).....	1
25	a 1550800	Step (RH).....	1
25	1550798	Step (RH).....	..	1	..
25	a 1550801	Step (RH).....	..	1	..
25	1550799	Step (RH).....	1
25	a 1550802	Step (RH).....	1
26	320162	Washer	2	2	2
27	169874	Nut	1	1	1
28	292682	Lockwasher.....	2	2	2
29	136692	Nut	2	2	2
30	361973	Spacer	16	16	16
31	1483375	Spacer	2	2	2
32	320158	Washer	6	6	6

COWL AND FLOOR PLATES

ITEM	PART NO.	DESCRIPTION	QTY		
			A	B	C
33	58951	Snap Ring.....	2	2	2
34	1552106	Floormat	1	1	1

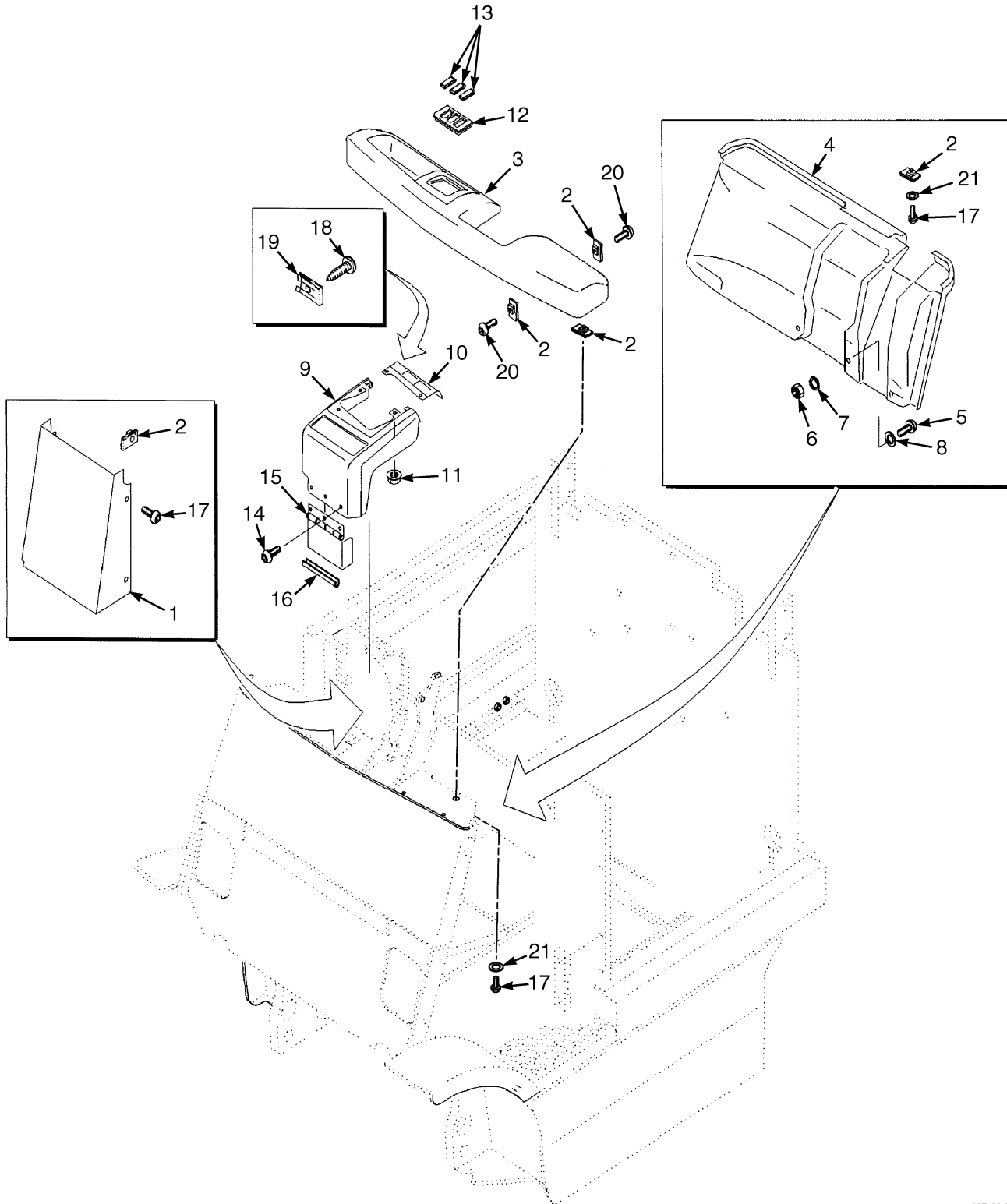
FOOTNOTES:

a Wide Tread

HYSTER

NOTES

COVERS (Figure 1-3)

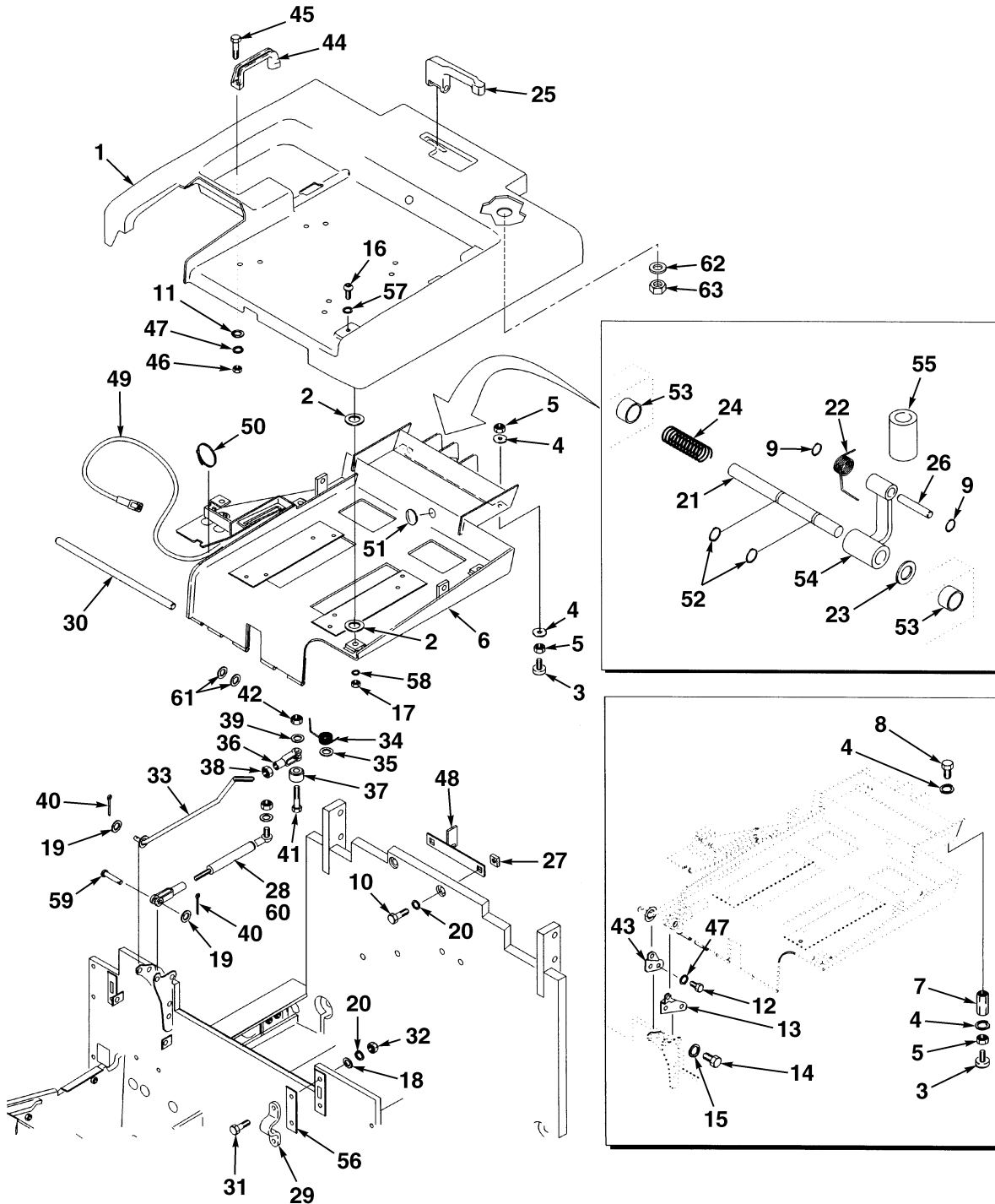


HP120744

COVERS**KEY:****A: 700 mm Battery Compartment****B: 847 mm Battery Compartment****C: 1015 mm Battery Compartment**

ITEM	PART NO.	DESCRIPTION	QTY		
			A	B	C
1	1388314	Cover (Without Raised Hood).....	1	1	1
1	1388315	Cover (With Raised Hood).....	1	1	1
2	325182	Nut (Retaining)	14	14	14
2	1354323	Nut (Foldover) (Optional)	14	14	14
3	2065834	Dash	1	1	1
4	2065835	Liner.....	1	1	1
5	296167	Capscrew.....	2	2	2
6	239503	Nut	2	2	2
7	292681	Lockwasher.....	2	2	2
8	320158	Washer	2	2	2
9	1381909	Cover	1	1	1
10	1381910	Cover	1	1	1
10	2066939	Cover (Optional)	1	1	1
11	169874	Nut	2	2	2
12	1382311	Panel (End).....	2	2	2
12	1382312	Panel (Center)	1	1	1
13	1382313	Cover (With Lights)	2	2	2
13	1382313	Cover (Without Lights).....	3	3	3
14	1364399	Screw.....	3	3	3
15	1364395	Cover	1	1	1
16	1376812	Trim	1	1	1
17	296159	Capscrew.....	6	6	6
18	1381919	Screw.....	2	2	2
19	1381918	Nut	2	2	2
20	353144	Capscrew.....	8	8	8
21	15127	Washer	3	3	3

HOOD (Figure 1-4)



HP120745

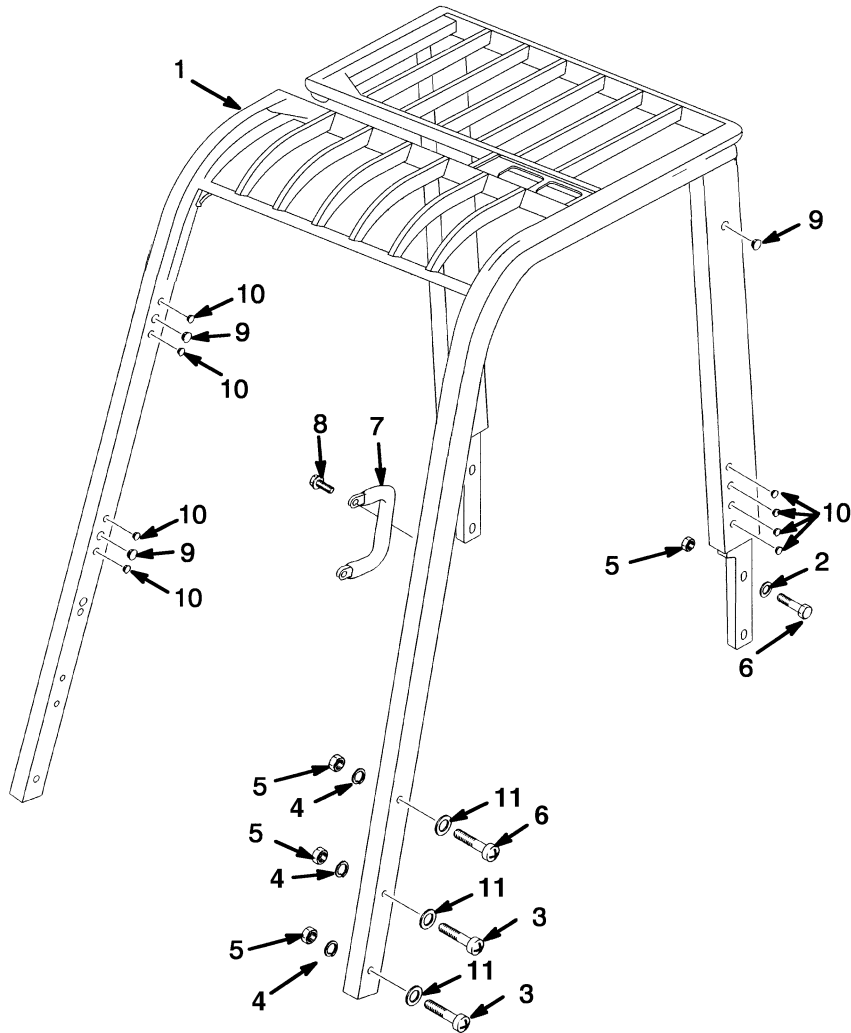
HOOD**KEY:****A: 700 mm Battery Compartment****B: 847 mm Battery Compartment****C: 1015 mm Battery Compartment**

ITEM	PART NO.	DESCRIPTION	QTY		
			A	B	C
1	1551275	Hood	1
1	1551276	Hood	1	..
1	1551277	Hood	1
2	1383680	Spacer	4	4	4
3	1347088	Stop Screw (With Raised Hood)	2	2	2
3	367251	Stop Screw (Without Raised Hood)	2	2	2
4	15155	Lockwasher	4	4	4
5	15055	Nut (With Raised Hood)	2	2	2
5	15055	Nut (Without Raised Hood)	4	4	4
6	1558063	Frame	1
6	1558065	Frame	1	..
6	1538409	Frame	1
7	1364729	Spacer (With Raised Hood)	2	2	2
8	16394	Capscrew (With Raised Hood)	2	2	2
9	12892	Snap Ring	2	2	2
10	292515	Capscrew	2	2	2
11	2034906	Washer	2	2	2
12	293601	Capscrew (With Raised Hood)	2	2	2
13	1377378	Bracket (With Raised Hood)	1	1	1
14	293613	Capscrew (With Raised Hood)	2	2	2
15	292681	Lockwasher (With Raised Hood)	2	2	2
16	296173	Capscrew	4	4	4
17	316826	Nut	4	4	4
18	320159	Washer	2	2	2
19	18515	Washer	2	2	2
20	292682	Lockwasher	4	4	4
21	1538963	Shaft	1	1	1
22	1377670	Spring	1	1	1
23	15125	Washer	1	1	1
24	1364538	Spring	1	1	1
25	1544196	Handle	1	1	1
26	1378975	Pin	1	1	1
27	1538971	Plate	2	2	2
28	1385758	Gas Spring	1
28	1385759	Gas Spring	1	1	..
29	355374	Clamp	1	1	1
30	1468405	Bar	1	1	1
31	287854	Capscrew (25 mm)	2	2	2
31	136985	Capscrew (30 mm) (Optional)	2	2	2
32	136692	Nut	2	2	2
33	1385761	Rod	1	1	1
34	1340866	Spring	1	1	1
35	1340867	Spacer	1	1	1
36	1364096	Clevis	1	1	1
37	1364243	Knob	1	1	1
38	15025	Nut	1	1	1

HOOD

ITEM	PART NO.	DESCRIPTION	QTY		
			A	B	C
39	296419	Washer	2	2	2
40	15212	Cotter Pin.....	2	2	2
41	293799	Capscrew.....	1	1	1
42	313805	Nut	1	1	1
43	1340743	Bracket (With Raised Hood)	1	1	1
44	362030	Handle	1	1	1
45	287816	Capscrew.....	2	2	2
46	136687	Nut	2	2	2
47	292680	Lockwasher (Without Raised Hood)	2	2	2
47	292680	Lockwasher (With Raised Hood)	4	4	4
48	1556488	Latch (Without Raised Hood)	1	1	1
48	1556669	Latch (With Raised Hood)	1	1	1
49	1340531	Wire Harness (Without Seat Brake)	1	1	1
50	114312	Strap Clamp (Without Seat Brake)	5	5	5
51	1359587	Grommet (Without Seat Brake)	1	1	1
52	353569	Retaining Ring	2	2	2
53	368618	Bushing.....	2	2	2
54	1378900	Link	1	1	1
55	1378902	Collar	1	1	1
56	325616	Spacer	AR	AR	AR
57	320160	Washer	4	4	4
58	15177	Washer	4	4	4
59	139	Rod End Pin	1	1	1
60	251099	Adhesive	2	2	2
61	15135	Washer	AR	AR	AR
62	1471535	Washer	1	3
63	316835	Nut	1	3

OVERHEAD GUARD (Figure 1-5)

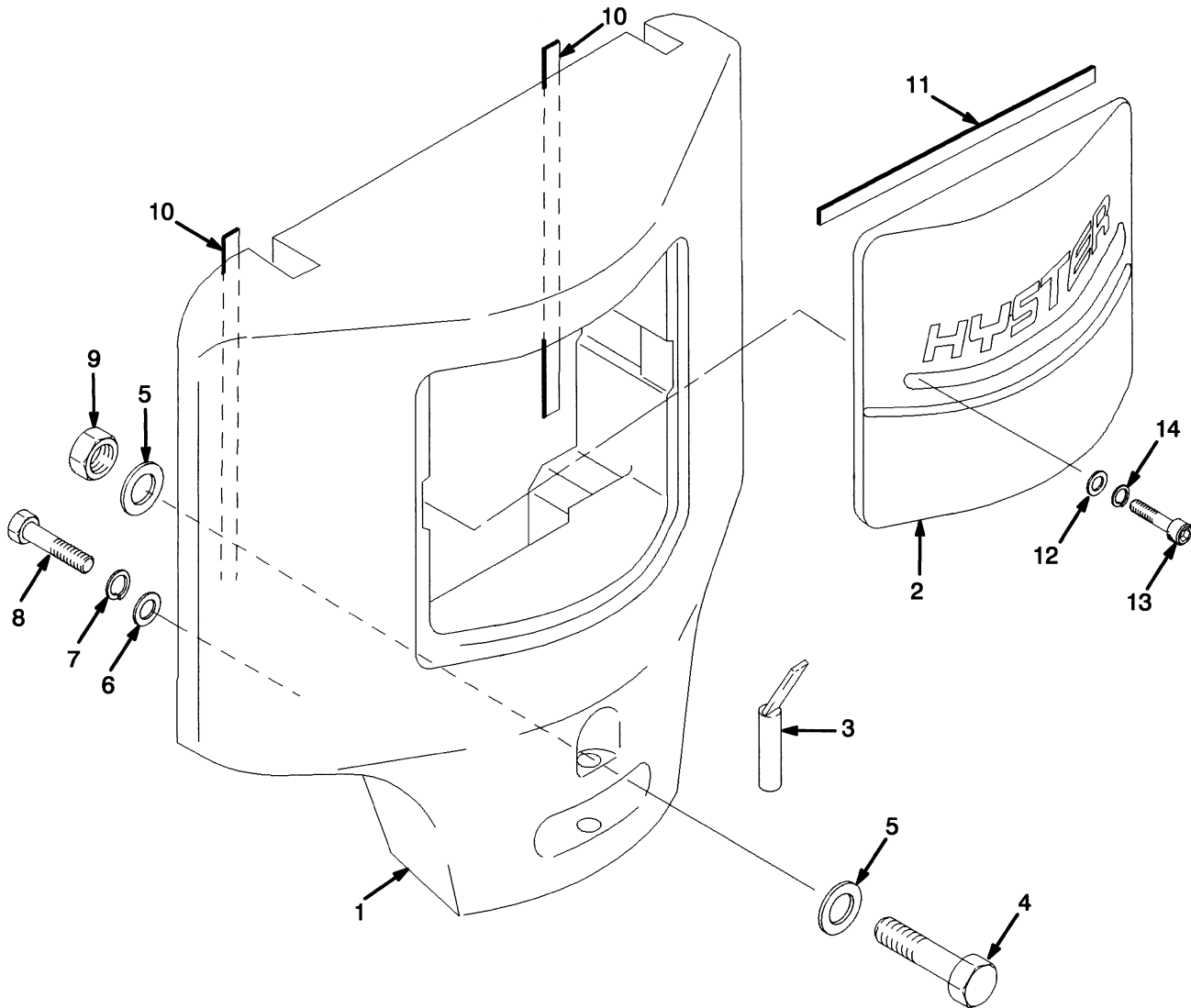


HP120678

OVERHEAD GUARD**KEY:****A: 700 mm Battery Compartment****B: 847 mm Battery Compartment****C: 1015 mm Battery Compartment**

ITEM	PART NO.	DESCRIPTION	QTY		
			A	B	C
1	1552744	Overhead Guard (Standard Height).....	1
1	1552747	Overhead Guard (Raised Height).....	1
1	1552745	Overhead Guard (Standard Height).....	..	1	..
1	1552748	Overhead Guard (Raised Height).....	..	1	..
1	1552746	Overhead Guard (Standard Height).....	1
1	1552749	Overhead Guard (Raised Height).....	1
2	320161	Washer	10	10	10
3	293649	Capscrew.....	4	4	4
4	292683	Lockwasher.....	6	6	6
5	1390182	Nut	10	10	10
6	293647	Capscrew.....	6	6	6
7	1343647	Handle	1	1	1
8	329067	Screw.....	2	2	2
9	1363917	Plug	5	5	5
10	1363916	Plug	12	12	12
11	296423	Washer	4	4	4

COUNTERWEIGHT (Figure 1-6)

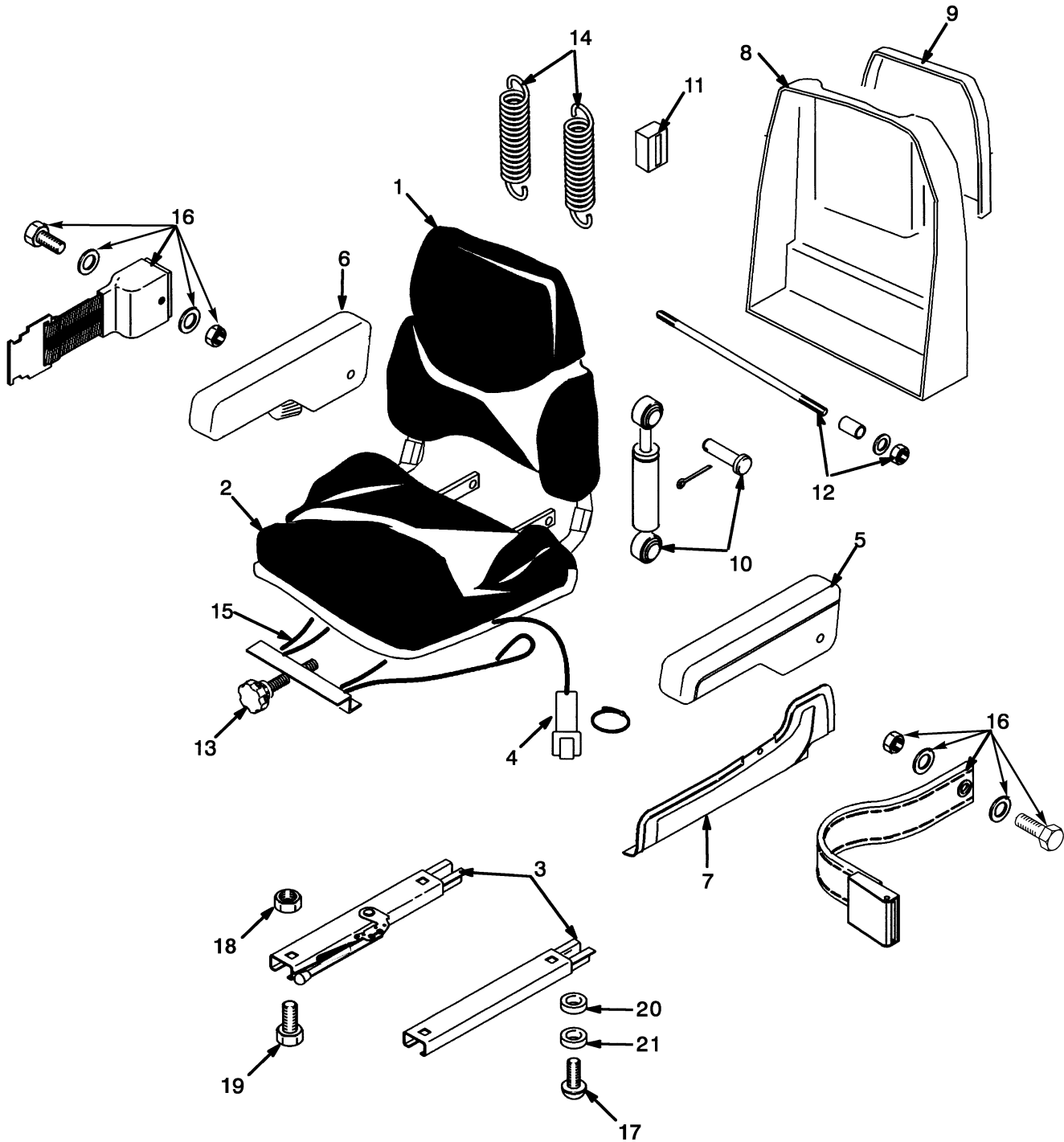


HP120746

COUNTERWEIGHT**KEY:****A: 700 mm Battery Compartment****B: 847 mm Battery Compartment****C: 1015 mm Battery Compartment**

ITEM	PART NO.	DESCRIPTION	QTY		
			A	B	C
1	1566683	Counterweight (2.0XM-3.0XM)	1	1	1
1	1566684	Counterweight (3.20XM).....	1
1	1566685	Counterweight (2.5XM-3.0XM)	1	1	..
2	1550699	Cover	1	1	1
3	326347	Tow Pin	1	1	1
4	292537	Capscrew.....	2	2	2
5	296423	Washer	4	4	4
6	221777	Washer	2	2	2
7	15162	Lockwasher.....	2	2	2
8	168054	Capscrew.....	2	2	2
9	300937	Nut	2	2	2
10	326003	Tape	AR	AR	AR
11	1546460	Tape	AR	AR	AR
12	15134	Washer	2	2	2
13	46698	Capscrew.....	2	2	2
14	15156	Lockwasher.....	2	2	2

SEMI-SUSPENSION SEAT (Figure 1-7)

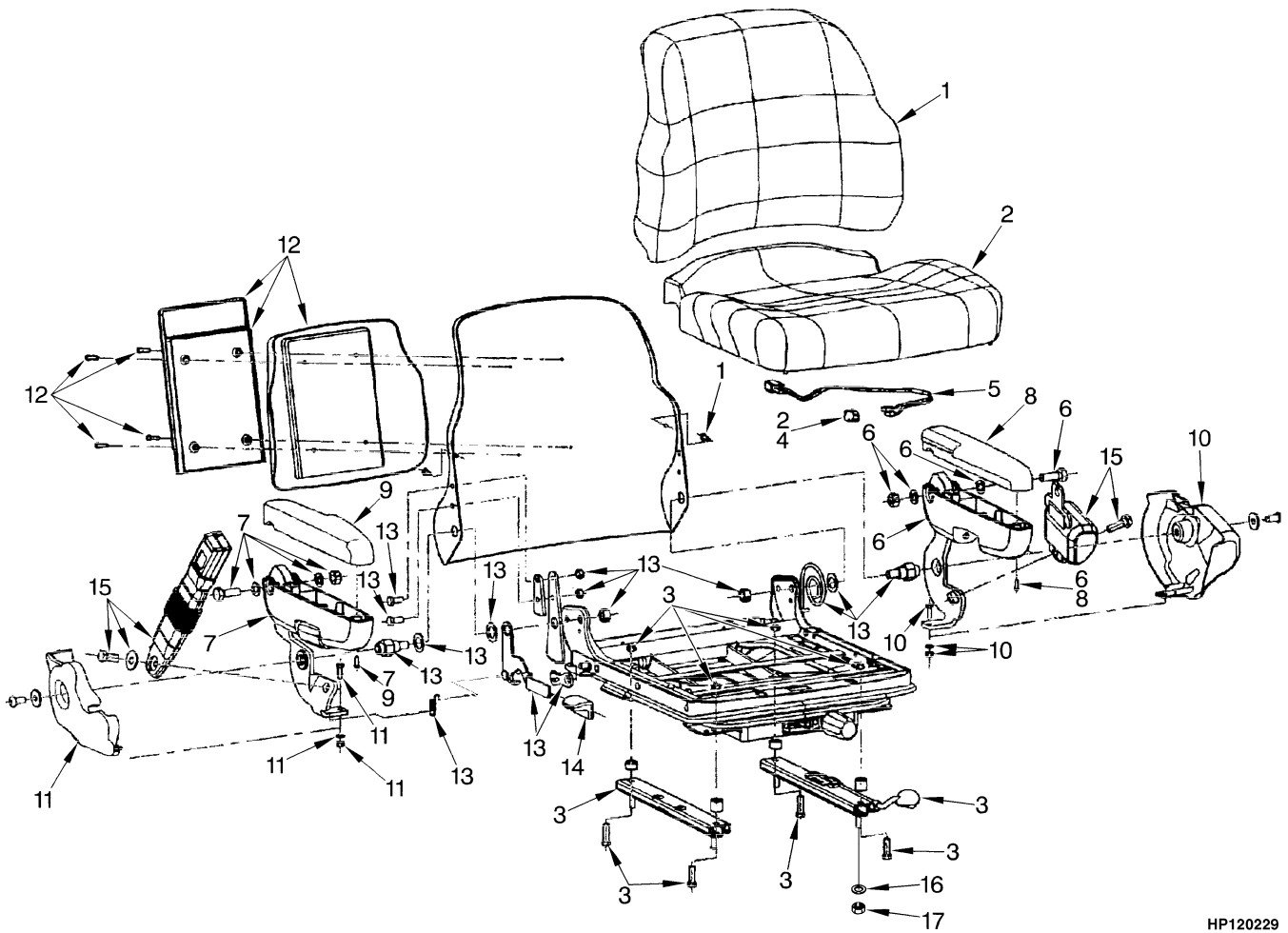


HP120750

SEMI-SUSPENSION SEAT

ITEM	PART NO.	DESCRIPTION	QTY
	1450209	Semi-Suspension Seat (Vinyl Cover)	1
1	1382111	Back Cushion	1
2	1382112	Seat Cushion.....	1
3	1459114	Seat Rail Kit.....	1
4	1354140	Switch Assembly	1
4	1330409	Connector	1
4	1330414	Secondary Lock	1
4	1330433	Pin.....	1
5	1453882	Armrest (LH).....	1
6	1453883	Armrest (RH)	1
7	1453884	Cover (LH)	1
7	1453885	Cover (RH)	1
8	1453886	Cover (Back).....	1
9	1453887	Holder.....	1
10	1362049	Shock Absorber Kit.....	1
11	1362052	Block.....	1
12	1362053	Shaft and Bearing Kit	1
13	1362061	Knob Kit.....	1
14	1367137	Suspension Spring Kit.....	1
15	1378307	Suspension Cable Kit	1
16	1461081	Seat Belt Kit.....	1
16	Capscrew	2
16	Nut	2
16	Washer.....	4
17	17178	Capscrew.....	4
18	Nut	4
19	Capscrew.....	4
20	1375848	Spacer	4
21	878236	Spacer	4

FULL SUSPENSION SEAT (Figure 1-8) SHEET 1 OF 2

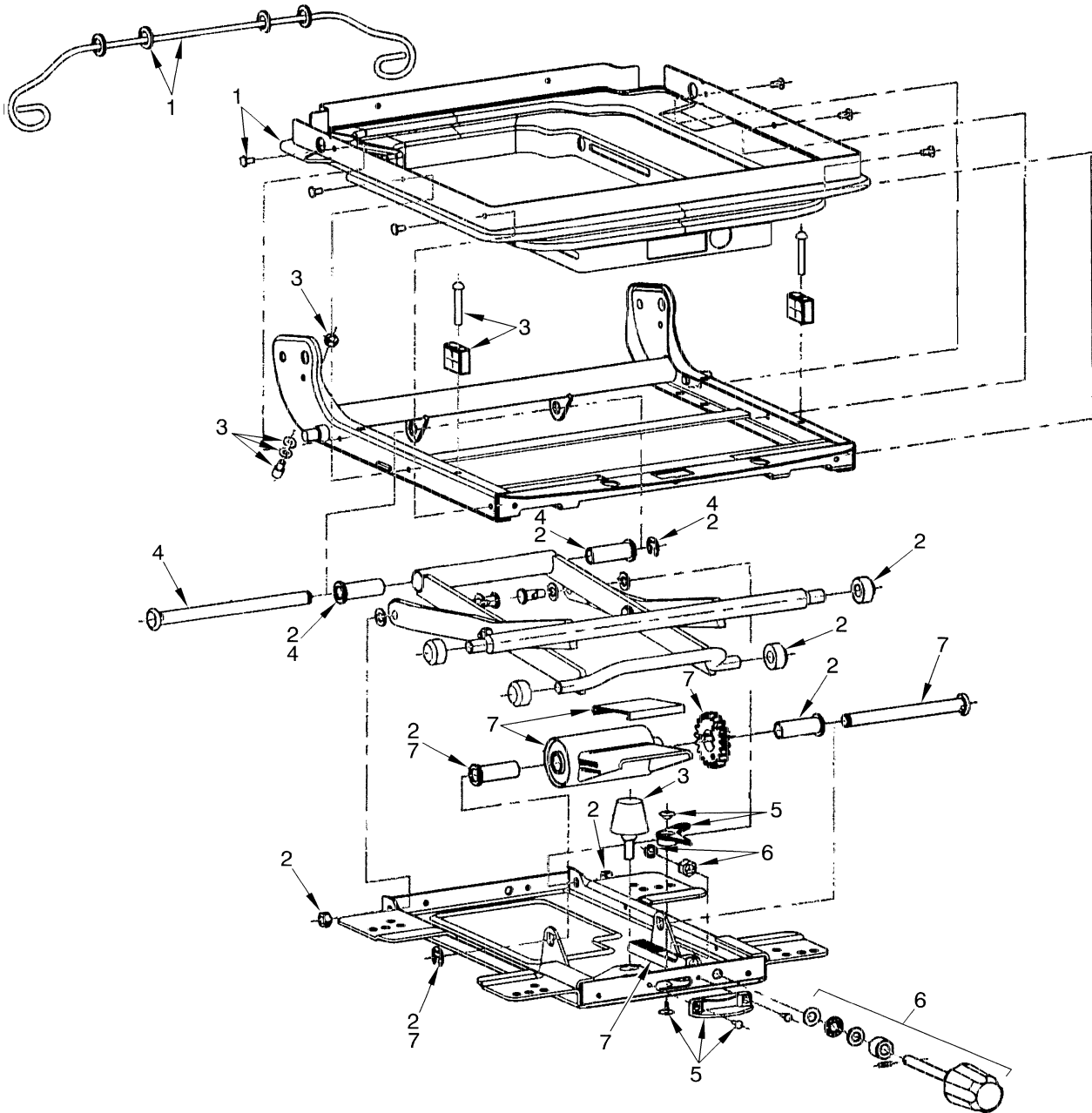


HP120229

**FULL SUSPENSION SEAT
SHEET 1 OF 2**

ITEM	PART NO.	DESCRIPTION	QTY
	1466006	Full Suspension Seat (Vinyl Cover)	1
	1466007	Full Suspension Seat (Fabric Cover)	1
1	1467533	Back Cushion (Vinyl)	1
1	1467535	Back Cushion (Fabric)	1
2	1494076	Seat Cushion (Vinyl)	1
2	1467536	Seat Cushion (Fabric)	1
3	1467513	Slider Kit	1
4	1467514	Switch	1
5	1467515	Wire Harness	1
6	1467516	Armrest (LH)	1
7	1467517	Armrest (RH)	1
8	1467518	Cap (LH)	1
9	1467519	Cap (RH)	1
10	1467520	Cover (LH)	1
11	1467521	Cover (RH)	1
12	1467522	Holder Kit	1
13	1467530	Recliner Kit	1
14	1467531	Recliner Knob	1
15	1467532	Seat Belt Kit	1
16	15175	Washer	4
17	145639	Nut	4

FULL SUSPENSION SEAT (Figure 1-9) SHEET 2 OF 2



HP120230

Thank you so much for reading.
Please click the “Buy Now!”
button below to download the
complete manual.



After you pay.

You can download the most
perfect and complete manual in
the world immediately.

Our support email:

ebooklibonline@outlook.com