

PARTS MANUAL

**J1.60XMT-2.00XMT
(J160)**

CUSTOMER EDITION

HYSTER

SECTIONS

1	FRAME
2	ELECTRICAL SYSTEM
3	DRIVE UNIT
4	STEERING SYSTEM
5	BRAKE/ACCELERATOR SYSTEM
6	HYDRAULIC SYSTEM
7	MAST-TWO STAGE LIMITED FREE-LIFT
8	MAST-THREE STAGE FULL FREE-LIFT
9	MAST-TWO STAGE FULL FREE-LIFT
10	MAST-FOUR STAGE FULL FREE-LIFT
11	OPTIONS
12	NUMERICAL INDEX

TABLE OF CONTENTS

DESCRIPTION	PAGE
A	
ACCELERATOR ASSEMBLY	5-2
ACCELERATOR PEDAL.....	5-4
B	
BACK-UP ALARM	11-2
BATTERY COMPARTMENT AND COVERS	1-2
BATTERY CONNECTOR	
DIN.....	2-2
NON-DIN.....	2-4
BATTERY SLIDER AND RETAINER	11-4
BATTERY SPACER	11-6
BRAKE ASSEMBLY	5-6
C	
CARRIAGE	
FOUR ROLLER	
FOUR STAGE FULL FREE-LIFT	10-24
SIX ROLLER	
FOUR STAGE FULL FREE-LIFT	10-26
THREE STAGE FULL FREE-LIFT	8-18
TWO STAGE FULL FREE-LIFT	9-16
TWO STAGE LIMITED FREE-LIFT.....	7-10
CONTACTOR	2-6
CONTACTOR PANEL	2-8
COUNTERWEIGHT	1-6
D	
DASH DISPLAY.....	2-10
DC CONVERTER	
36/48 VOLT TO 12 VOLT	11-8
DECAL AND PLATE LOCATION.....	1-8
DRIVE TIRE AND WHEEL ASSEMBLY	
SOLID PNEUMATIC	3-2
DRIVE UNIT	3-4
E	
ELECTRO-HYDRAULIC AUXILIARY ONE VALVE SECTION.....	6-36
ELECTRO-HYDRAULIC AUXILIARY TWO VALVE SECTION	6-38
ELECTRO-HYDRAULIC CONTROL	2-12
ELECTRO-HYDRAULIC CONTROL VALVE	6-30
ELECTRO-HYDRAULIC JOYSTICK	6-42
ELECTRO-HYDRAULIC LEVERS.....	6-40
ELECTRO-HYDRAULIC MAIN CONTROL VALVE SECTION	6-32
ELECTRO-HYDRAULIC TILT VALVE SECTION.....	6-34
EMERGENCY STOP.....	2-14

TABLE OF CONTENTS (Continued)

DESCRIPTION	PAGE
F	
FLOOR PLATES	
⇒S/N J160A01500B.....	1-10
S/N J160A01501B⇒.....	1-12
FORKS.....	1-14
FREE LIFT	
THREE STAGE FULL FREE-LIFT.....	8-14
TWO STAGE FULL FREE-LIFT.....	9-12
FREE LIFT CYLINDER	
FOUR STAGE FULL FREE-LIFT.....	10-14
THREE STAGE FULL FREE-LIFT.....	8-16
TWO STAGE FULL FREE-LIFT.....	9-14
FREE LIFT HOSE	
FOUR STAGE FULL FREE-LIFT.....	10-18
FRONT LIGHT.....	11-10
G	
GEAR PUMP.....	4-2
H	
HAND PUMP.....	4-4
HANDLEVER.....	6-26
HEADER HOSE	
THREE STAGE FULL FREE-LIFT.....	8-20
TWO STAGE FULL FREE-LIFT.....	9-18
TWO STAGE LIMITED FREE-LIFT.....	7-12
HOSE ATTACHING PARTS	
DOUBLE FUNCTION	
FOUR STAGE FULL FREE-LIFT.....	10-30
SINGLE FUNCTION	
FOUR STAGE FULL FREE-LIFT.....	10-28
HYDRAULIC GEAR PUMP.....	6-4
HYDRAULIC HOSE AND FITTINGS	
ELECTRO.....	6-44
MANUAL.....	6-2
HYDRAULIC PUMP MOTOR.....	6-6
HYDRAULIC TANK ASSEMBLY.....	6-46
HYDRAULIC VALVE AND ATTACHING PARTS	
MANUAL.....	6-24
I	
INNER INTERMEDIATE MAST	
FOUR STAGE FULL FREE-LIFT.....	10-6
INNER MAST	
FOUR STAGE FULL FREE-LIFT.....	10-8
THREE STAGE FULL FREE-LIFT.....	8-6
TWO STAGE FULL FREE-LIFT.....	9-4
TWO STAGE LIMITED FREE-LIFT.....	7-4
INTEGRAL SIDE-SHIFT	
HYDRAULIC HOSES.....	11-18
INTEGRAL SIDE-SHIFT CARRIAGE	

TABLE OF CONTENTS (Continued)

DESCRIPTION	PAGE
I (continued)	
THREE STAGE FULL FREE-LIFT	11-14
TWO STAGE FULL FREE-LIFT	11-16
TWO STAGE LIMITED FREE-LIFT	11-12
INTERMEDIATE MAST	
THREE STAGE FULL FREE-LIFT	8-4
L	
LIFT CHAINS	
FOUR STAGE FULL FREE-LIFT	10-16
LOAD BACKREST	
FOUR STAGE FULL FREE-LIFT	10-22
LOAD BACKREST EXTENSION	1-18
LOWERING CONTROL VALVE	
FOUR STAGE FULL FREE-LIFT	10-20
M	
MAIN LIFT ASSEMBLY	
THREE STAGE FULL FREE-LIFT	8-8
TWO STAGE FULL FREE-LIFT	9-6
TWO STAGE LIMITED FREE-LIFT	7-6
MAIN LIFT CYLINDER	
LEFT HAND	
FOUR STAGE FULL FREE-LIFT	10-12
TWO STAGE FULL FREE-LIFT	9-8
RIGHT HAND	
FOUR STAGE FULL FREE-LIFT	10-10
TWO STAGE FULL FREE-LIFT	9-10
THREE STAGE FULL FREE-LIFT	8-12
TWO STAGE LIMITED FREE-LIFT	7-8
MAIN WIRE HARNESS	2-16
MANUAL CONTROL VALVE	6-28
MASTER CYLINDER	5-8
O	
OUTER INTERMEDIATE MAST	
FOUR STAGE FULL FREE-LIFT	10-4
OUTER MAST	
FOUR STAGE FULL FREE-LIFT	10-2
THREE STAGE FULL FREE-LIFT	8-2
TWO STAGE FULL FREE-LIFT	9-2
TWO STAGE LIMITED FREE-LIFT	7-2
OVERHEAD GUARD	1-20
P	
PARKING BRAKE	5-10

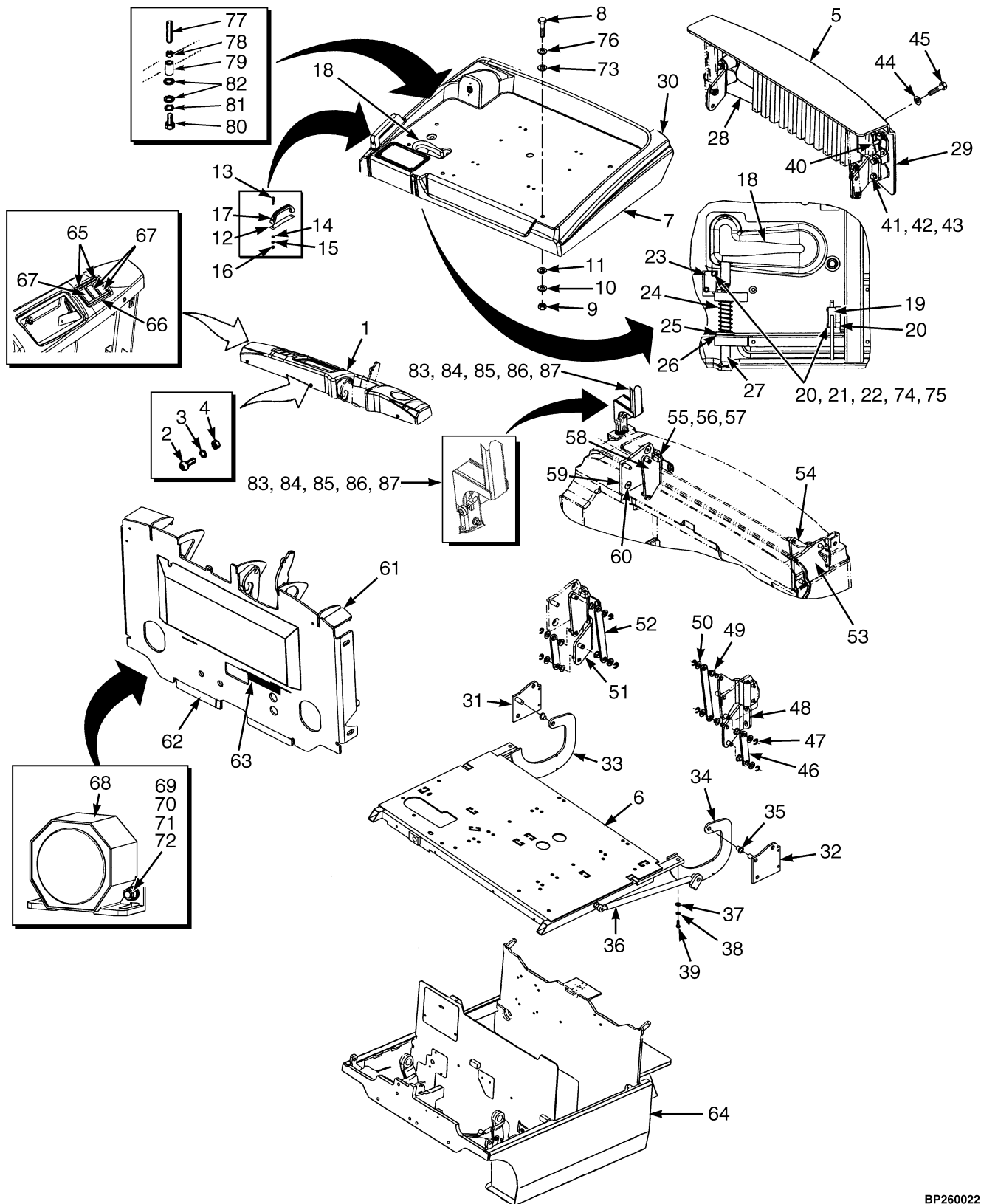
TABLE OF CONTENTS (Continued)

DESCRIPTION	PAGE
S	
SEAT	
FULL SUSPENSION.....	1-24
NON-SUSPENSION	1-22
SERVICE SOFTWARE AND INTERFACE CABLE	11-20
SHIFT LEVER	4-6
SIDE-SHIFT CYLINDER	11-19
STATIC STRAP.....	1-28
PENDING PER ECN 93456⇒.....	1-26
STEER AXLE	4-8
STEER COLUMN	4-12
STEER PUMP AND MOTOR	4-16
STEER TIRE AND WHEEL ASSEMBLY	
SOLID PNEUMATIC	4-18
T	
TAIL LIGHT.....	11-22
TILT CYLINDER	
FOUR STAGE FULL FREE-LIFT	6-20
THREE STAGE FULL FREE-LIFT	6-12
TWO STAGE FULL FREE-LIFT	6-16
TWO STAGE LIMITED FREE-LIFT.....	6-8
TILT CYLINDER ATTACHING PARTS	
FOUR STAGE FULL FREE-LIFT	6-22
THREE STAGE FULL FREE-LIFT	6-14
TWO STAGE FULL FREE-LIFT	6-18
TWO STAGE LIMITED FREE-LIFT.....	6-10
TRACTION CONTROLLER	
CONTACTOR HYDRAULIC	2-20
TRANSISTOR/PREMIUM.....	2-22
TRACTION MOTOR	3-6
TRANSMISSION	3-8
W	
WIRE HARNESS	
OPTIONAL LIGHTS AND DC CONVERTER	11-28
WORK LIGHT	11-24
WORK LIGHT/STROBE COMBINATION	11-26

SECTION 1
FRAME

DESCRIPTION	PAGE
BATTERY COMPARTMENT AND COVERS	1-2
COUNTERWEIGHT	1-6
DECAL AND PLATE LOCATION	1-8
FLOOR PLATES	
⇒S/N J160A01500B.....	1-10
S/N J160A01501B⇒.....	1-12
FORKS	1-14
LOAD BACKREST EXTENSION.....	1-18
OVERHEAD GUARD.....	1-20
SEAT	
FULL SUSPENSION.....	1-24
NON-SUSPENSION	1-22
STATIC STRAP.....	1-28
PENDING PER ECN 93456⇒.....	1-26

BATTERY COMPARTMENT AND COVERS (Figure 1-1)



BP260022

BATTERY COMPARTMENT AND COVERS

ITEM	PART NO.	DESCRIPTION	QTY
1	1528851	Cowl Cover	1
2	353144	Capscrew.....	5
3	320156	Washer	5
4	136687	Nut	5
5	1527262	Cover	1
6	f 1523615	Frame (1290 mm)	1
6	g 1593570	Frame (1290 mm)	1
6	f 1523614	Frame (1385 mm)	1
6	g 1593569	Frame (1385 mm)	1
6	f 1526650	Frame (1495 mm)	1
6	g 1593571	Frame (1495 mm)	1
7	1521321	Battery Cover (1290 mm)	1
7	1521405	Battery Cover (1385 mm)	1
7	1521406	Battery Cover (1495 mm)	1
8	369242	Capscrew.....	6
9	239503	Nut	6
10	292681	Lockwasher.....	6
11	320158	Washer	6
12	1523623	Backing Plate.....	1
13	292502	Capscrew.....	2
14	320156	Washer	2
15	292680	Lockwasher.....	2
16	136687	Nut	2
17	362030	Handle	1
18	1530955	Latch Handle	1
19	1533890	Microswitch	1
20	1536299	Standoff	4
21	302231	Screw.....	4
22	221852	Lockwasher.....	4
23	2037379	Switch	1
24	2307799	Spring	1
25	320161	Washer	1
26	182118	Retaining Ring	1
27	1528869	Pin	1
28	1541774	Seal Strip	1
29	1580419	Seal Strip	1
30	1573554	Seal Strip	1
31	1527299	Bracket Weldment (RH).....	1
32	1527304	Bracket Weldment (LH).....	1
33	f 1525750	Bracket (RH)	1
33	g 1588130	Bracket (RH)	1
34	f 1525751	Bracket (LH).....	1
34	g 1588131	Bracket (LH).....	1
35	2310972	Bearing	2
36	cd 1553456	Gas Spring.....	1
36	e 1587636	Gas Spring.....	2
36	g 1587634	Gas Spring.....	2
37	320158	Washer	4
38	292681	Lockwasher.....	4
39	287851	Capscrew.....	4
40	269200	Nut	2

BATTERY COMPARTMENT AND COVERS

ITEM	PART NO.	DESCRIPTION	QTY
41	320159	Washer	4
42	292682	Lockwasher.....	4
43	293629	Capscrew.....	4
44	15176	Washer	2
45	2311598	Screw.....	2
46	1527296	Short Arm	2
47	182118	Retaining Ring.....	8
48	1527327	Bracket Weldment (LH).....	1
49	2056115	Bearing	8
50	320161	Washer	8
51	1527326	Bracket Weldment (RH).....	1
52	1527297	Long Arm	2
53	1527304	Bracket Weldment (LH).....	1
54	1527330	Bracket Weldment (LH).....	1
55	320157	Washer	4
56	293613	Capscrew.....	4
57	292681	Lockwasher.....	4
58	1527329	Bracket Weldment (RH).....	1
59	1527299	Bracket Weldment (RH).....	1
60	296252	Bolt	4
61	h 1519095	Cowl.....	1
61	i 1585548	Cowl.....	1
62	1554624	Seal Strip	2
63	1554625	Seal Strip	1
64	1560099	Frame (1290 mm).....	1
64	1525348	Frame (1385 mm).....	1
64	1525349	Frame (1495 mm).....	1
64	a 1560101	Frame (Optional).....	1
64	b 1525351	Frame (Optional).....	1
65	1382311	Mounting Panel.....	2
66	1382312	Mounting Panel.....	1
67	1382313	Mounting Panel.....	3
68	1483422	Horn.....	1
69	320156	Washer	2
70	292680	Lockwasher.....	2
71	136687	Nut	2
72	2062875	Capscrew.....	2
73	375629	Washer	6
74	2311598	Screw.....	2
75	1566250	Nut Plate Assembly	1
76	1565674	Plug	1
77	2309936	Stud	1
78	15026	Nut	1
79	1519932	Standoff	1
80	16634	Capscrew.....	1
81	15156	Lockwasher.....	1
82	15176	Washer	2
83	2302746	Bumper	1
84	f 293617	Capscrew.....	1
84	g 132861	Capscrew.....	1
85	320158	Washer	1

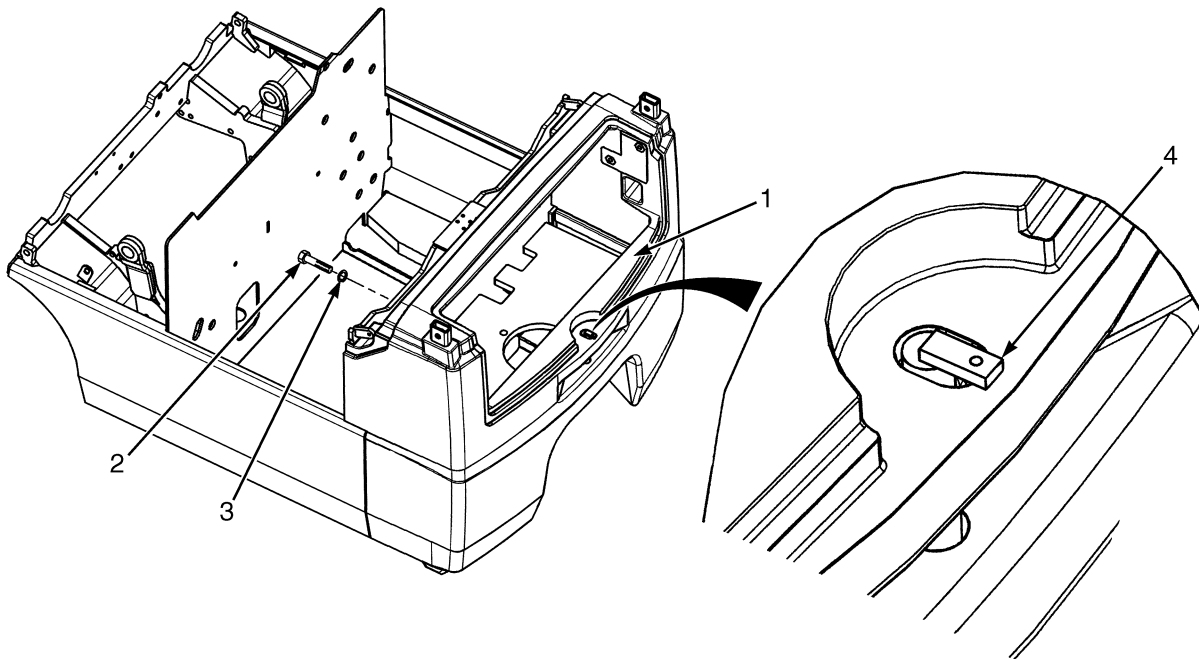
BATTERY COMPARTMENT AND COVERS

ITEM	PART NO.	DESCRIPTION	QTY
86	292681	Lockwasher.....	2
87	239503	Nut.....	2

FOOTNOTES:

- a** 1290 mm - Side Removal
- b** 1385 mm - Side Removal
- c** Quantity 2 for 1495 mm wheelbase.
- d** ⇒ S/N J160A02358C
- e** S/N J160A02359C ↔ S/N J160A02590C
- f** ⇒ S/N J160A02590C
- g** S/N J160A02591C ⇒
- h** ⇒ D/B 01/2005
- i** D/B 01/2005 ⇒

COUNTERWEIGHT (Figure 1-2)

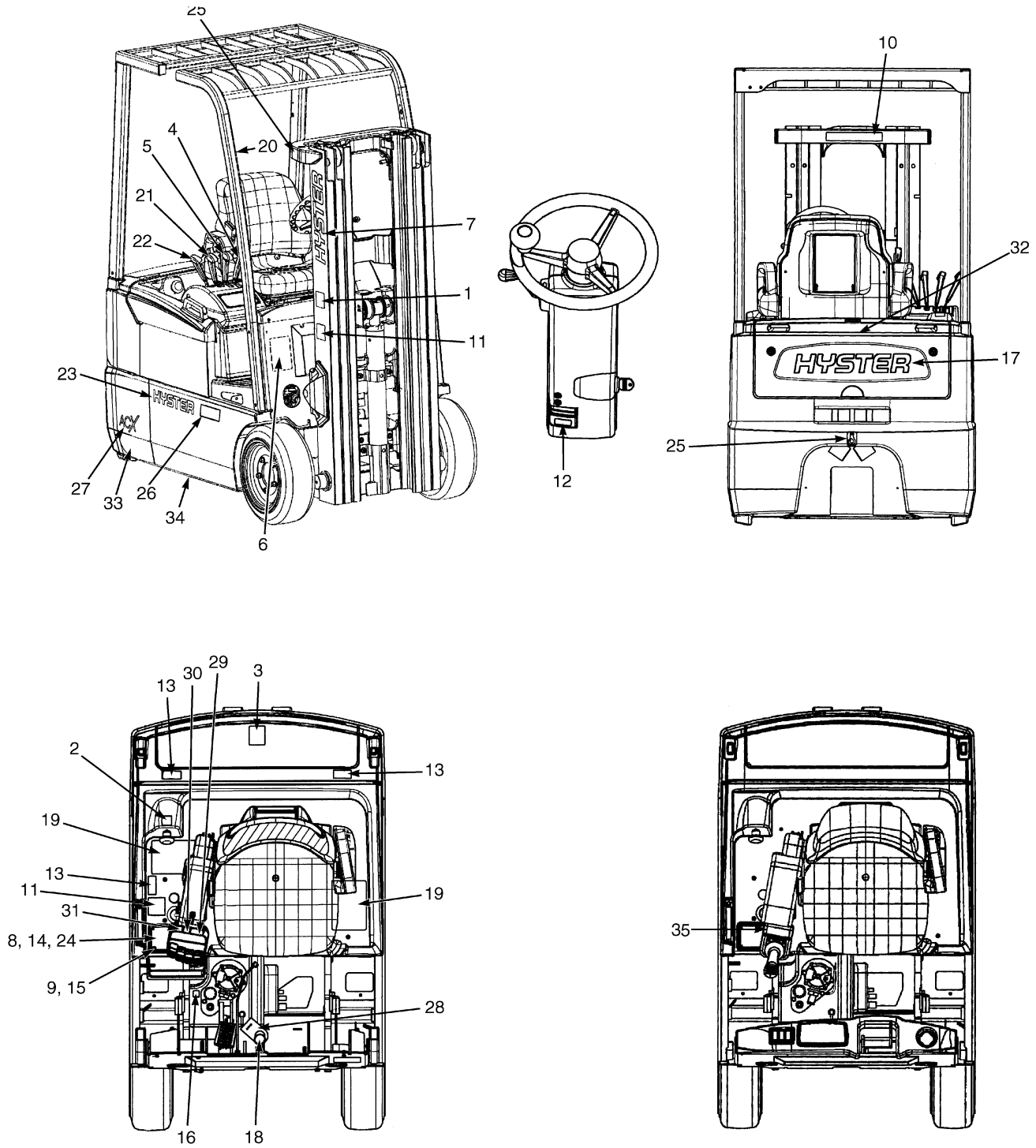


BP120055

COUNTERWEIGHT

ITEM	PART NO.	DESCRIPTION	QTY
1	1529150	Counterweight	1
2	293706	Capscrew	4
3	296431	Washer	4
4	1527974	Tow Pin	1

DECAL AND PLATE LOCATION (Figure 1-3)



BP120066

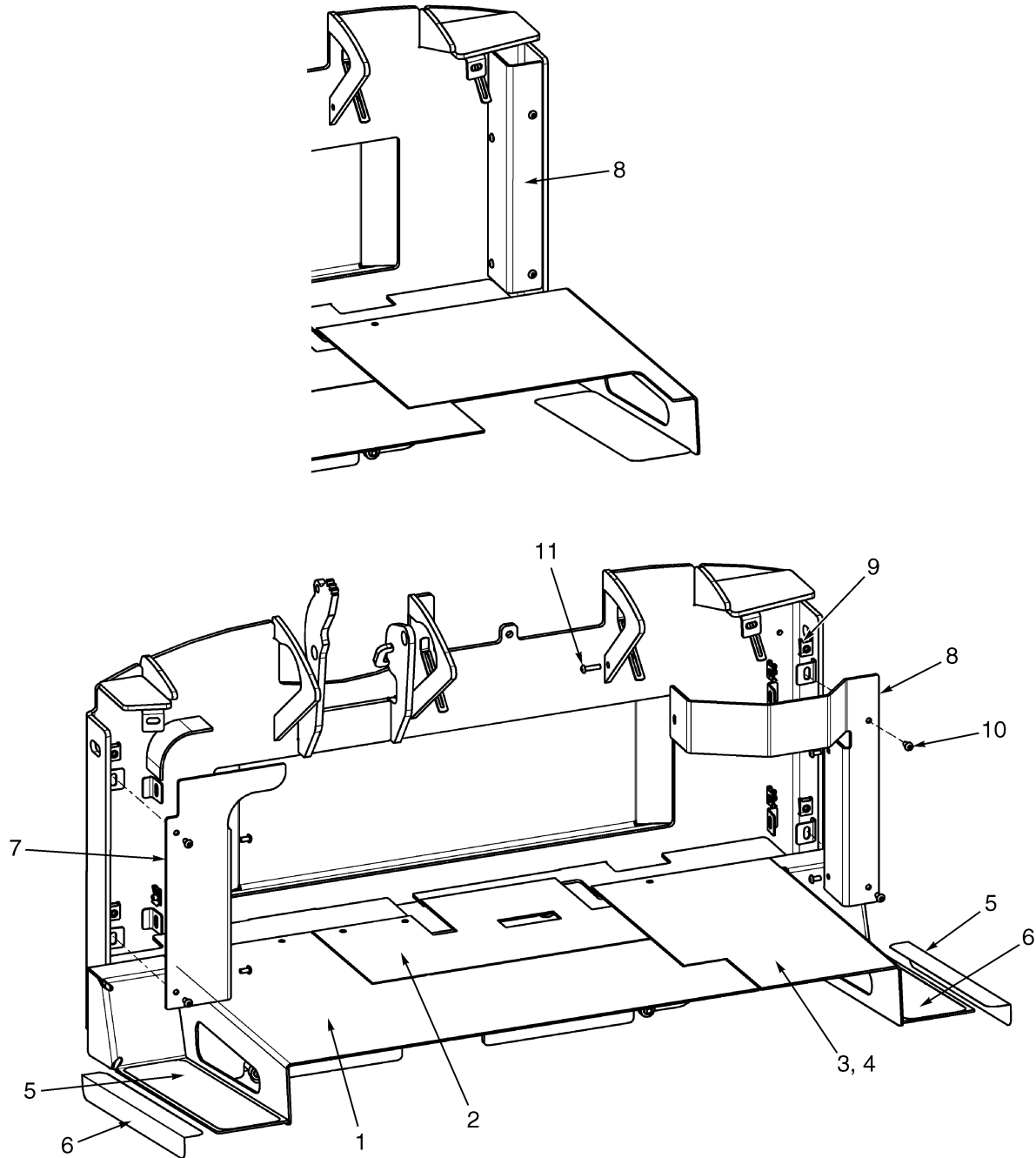
DECAL AND PLATE LOCATION

ITEM	PART NO.	DESCRIPTION	QTY
1	1339830	Label (Mast Warning)	2
2	2049939	Label (Battery Disconnect)	1
3	1339828	Label (No Riders)	1
4	1538033	Label (Lift).....	1
5	1538034	Label (Tilt).....	1
6	320037	Label (Patent Plate)	1
7	1339672	Label (Hyster)	2
8	1471618	Label (Nameplate)	1
8	a	Nameplate	1
8	238950	Label (Incomplete Truck)	1
9	170658	Rivet.....	4
10	1343276	Label (Mast Warning)	1
11	c 1339832	Label (Pinch Point)	2
12	2303178	Label (Tilt Column)	1
13	c 2304044	Label (Pinch Point)	2
14	389688	Cover	1
15	15140	Washer	4
16	1385099	Label (Hydraulic Oil Fill).....	1
17	1544266	Label (Hyster)	1
18	b	Label (Brake System Fluid) (Cold Storage)	1
18	b	Label (Brake System Fluid)	1
19	1366725	Label (Operator Warning)	1
20	1359588	Label (Operator Restraint)	2
21	1538036	Label (Sideshift).....	1
22	1538037	Label (Auxiliary Function - Fork Spread)	1
22	1538038	Label (Fork Rotate).....	1
23	1529042	Label (Hyster)	2
24	1560157	Label (Hyster)	1
25	316448	Label (Lifting Eye).....	3
26	2015059	Label (Model 1.60).....	2
26	2015060	Label (Model 1.80).....	2
26	1339667	Label (Model 2.00).....	2
27	1561212	Label (ACX)	2
28	2068404	Label (Brake System Fluid Tag).....	1
28	2068405	Label (Brake System Fluid Tag) (Cold Storage)	1
29	1356137	Label (Lift and Tilt)	1
30	370258	Label (Auxiliary Function - Side-Shift)	1
31	370259	Label (Auxiliary Function - Fork Spreader)	1
32	1561211	Label (Reflector)	1
33	1561208	Label (LH Rear)	2
33	1561207	Label (RH Rear)	2
34	1561210	Label (LH Front).....	1
34	1561209	Label (RH Front)	1
35	2070482	Label Set (Hoist and Tilt, Side-Shift)	1
35	2074989	Label Set (Hoist and Tilt, Fork Spread)	1

FOOTNOTES:

- a** Contact your dealer
- b** Not Serviced Separately
- c** Quantity 1 for Manual Hydraulics

FLOOR PLATES (Figure 1-4) (⇒S/N J160A01500B)



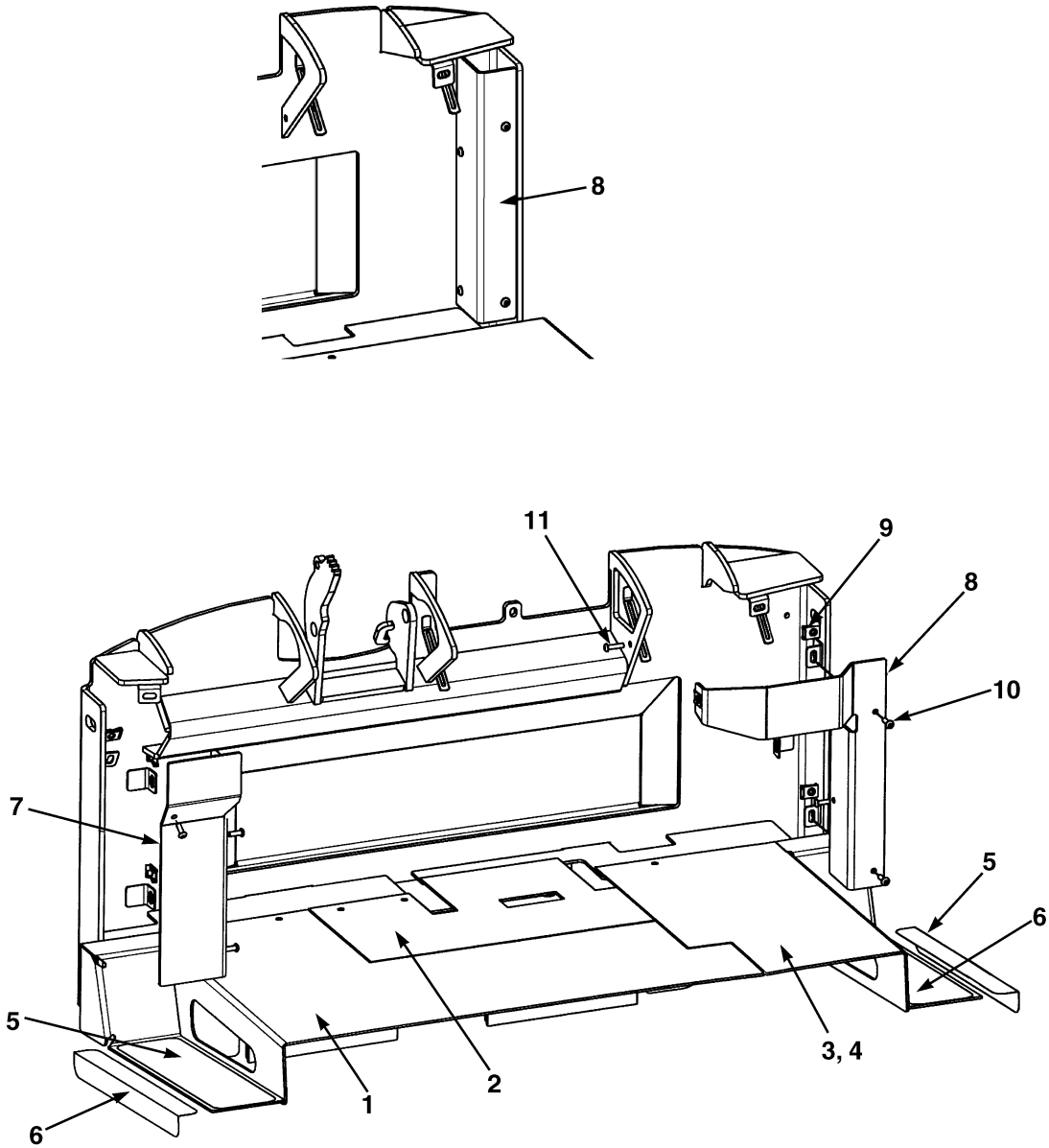
BP000191

FLOOR PLATES
(⇒S/N J160A01500B)**KEY:****A: Electric Valve****B: Manual Valve**

ITEM	PART NO.	DESCRIPTION	QTY	
			A	B
1	2062267	Floor Plate (LH)	1	1
2	2062264	Floor Plate (Center)	1	1
3	2062266	Floor Plate (RH).....	..	1
4	2062265	Floor Plate (RH) (With Step).....	1	..
5	2062560	Anti-Slip Pad	2	1
6	2309317	Anti-Slip Pad	2	1
7	1550531	Hose Cover	1	1
8	1528551	Harness Cover.....	1	..
8	1551236	Harness Cover.....	..	1
9	1364542	Clip Nut.....	9	9
10	2062718	Capscrew.....	8	8
11	2066709	Capscrew.....	1	..
	a 2059533	Floor Mat	1
	a 2059534	Floor Mat	1	..

FOOTNOTES:**a** Not Illustrated

FLOOR PLATES (Figure 1-5) (S/N J160A01501B⇒)



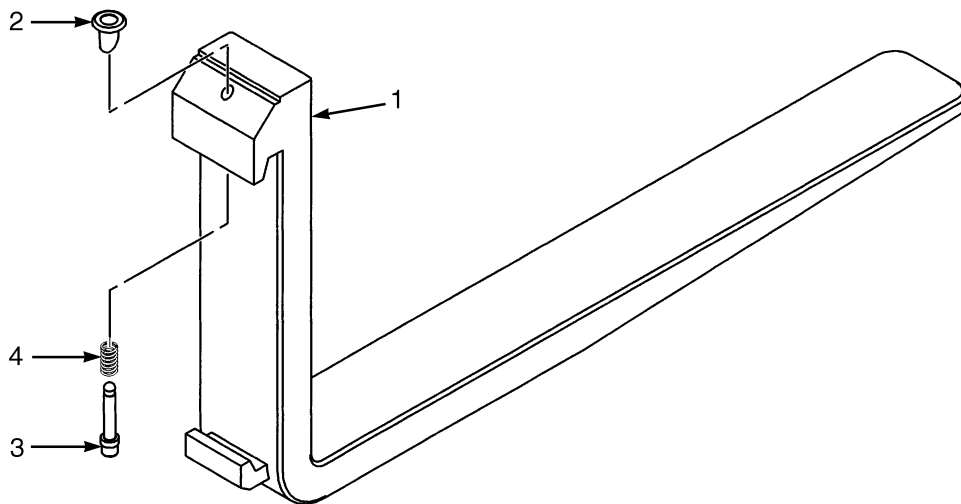
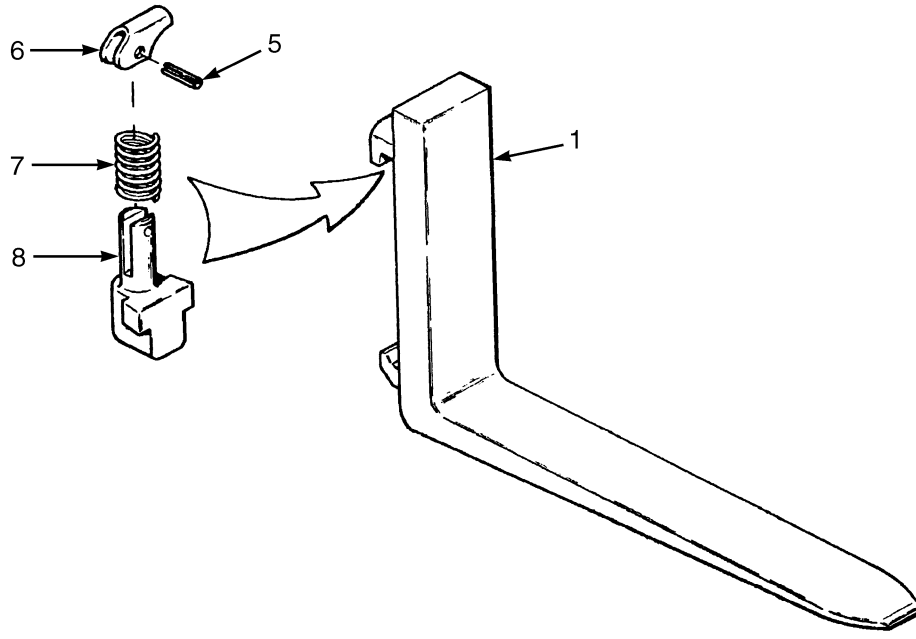
BP000227

FLOOR PLATES
(S/N J160A01501B⇒)**KEY:****A: Electric Valve****B: Manual Valve**

ITEM	PART NO.	DESCRIPTION	QTY	
			A	B
1	b 2062267	Floor Plate (LH)	1	1
1	c 1585515	Floor Plate (LH)	1	1
1	c 2311223	Pin	1	1
1	c 15181	Washer	4	4
2	1565784	Floor Plate (Center)	1	1
3	1565785	Floor Plate (RH)	1
4	b 2062265	Floor Plate (RH) (With Step)	1	..
4	c 1585519	Floor Plate (RH) (With Step)	1	..
5	2062560	Anti-Slip Pad	2	1
6	2309317	Anti-Slip Pad	2	1
7	1550531	Hose Cover	1	1
8	1528551	Harness Cover	1	..
8	1551236	Harness Cover	1
9	1364542	Clip Nut	7	6
10	1378550	Capscrew	6	6
11	2066709	Capscrew	1	..
	a 2059533	Floor Mat	1
	a 2059534	Floor Mat	1	..

FOOTNOTES:**a** Not Illustrated**b** ⇒ PENDING PER ECN 10203149**c** PENDING PER ECN 10203149 ⇒

FORKS (Figure 1-6)



BP290016

FORKS**KEY:****A: Standard****B: Optional**

ITEM	PART NO.	DESCRIPTION	QTY	
			A	B
1	1338129	Fork (889 mm) (80 x 40 x 900)	2	..
1	1327017	Fork (914 mm) (80 x 40 x 914)	2	..
1	1327021	Fork (991 mm) (80 x 40 x 1000)	2	..
1	1327018	Fork (1067 mm) (80 x 40 x 1067)	2	..
1	1327019	Fork (1219 mm) (80 x 40 x 1219)	2	..
1	1327020	Fork (1372 mm) (80 x 40 x 1372)	2	..
1	1327021	Fork (991 mm) (80 x 40 x 1000)	2	..
1	1327022	Fork (1092 mm) (80 x 40 x 1100)	2	..
1	1338131	Fork (1143 mm) (80 x 40 x 1150)	2	..
1	1327023	Fork (1194 mm) (80 x 40 x 1200)	2	..
1	384210	Fork (762 mm) (100 x 40 x 762)	2	..
1	1338133	Fork (889 mm) (100 x 40 x 900)	2	..
1	384211	Fork (914 mm) (100 x 40 x 914)	2	..
1	a 1338076	Fork (914 mm) (100 x 40 x 914)	2	..
1	c 1333043	Fork (1000 mm) (100 x 40 x 1000)	2	..
1	384213	Fork (1067 mm) (100 x 40 x 1067)	2	..
1	ac 1338077	Fork (1067 mm) (100 x 40 x 1067)	2	..
1	1333044	Fork (1100 mm) (100 x 40 x 1100)	2	..
1	1338135	Fork (1143 mm) (100 x 40 x 1150)	2	..
1	c 1333045	Fork (1200 mm) (100 x 40 x 1200)	2	..
1	384214	Fork (1219 mm) (100 x 40 x 1219)	2	..
1	ac 1338078	Fork (1219 mm) (100 x 40 x 1219)	2	..
1	384215	Fork (1372 mm) (100 x 40 x 1372)	2	..
1	384216	Fork (1524 mm) (100 x 40 x 1524)	2	..
2	1523732	Knob	1	..
3	1523733	Pin	1	..
4	1500782	Spring	1	..
5	1378775	Fork (889 mm) (80 x 40 x 900)	2
5	1378771	Fork (914 mm) (80 x 40 x 914)	2
5	1378776	Fork (991 mm) (80 x 40 x 1000)	2
5	1378772	Fork (1067 mm) (80 x 40 x 1067)	2
5	1378773	Fork (1219 mm) (80 x 40 x 1219)	2
5	1378774	Fork (1372 mm) (80 x 40 x 1372)	2
5	1378776	Fork (991 mm) (80 x 40 x 1000)	2
5	1378777	Fork (1092 mm) (80 x 40 x 1100)	2
5	1378778	Fork (1143 mm) (80 x 40 x 1150)	2
5	1378779	Fork (1194 mm) (80 x 40 x 1200)	2
5	1378785	Fork (762 mm) (100 x 40 x 762)	2
5	1378792	Fork (900 mm) (100 x 40 x 900)	2
5	1378786	Fork (914 mm) (100 x 40 x 914)	2
5	a 1378798	Fork (914 mm) (100 x 40 x 914)	2
5	c 1378793	Fork (991 mm) (100 x 40 x 1000)	2
5	1378788	Fork (1067 mm) (100 x 40 x 1067)	2
5	ac 1378799	Fork (1067 mm) (100 x 40 x 1067)	2
5	1378794	Fork (1092 mm) (100 x 40 x 1100)	2
5	1378795	Fork (1143 mm) (100 x 40 x 1150)	2

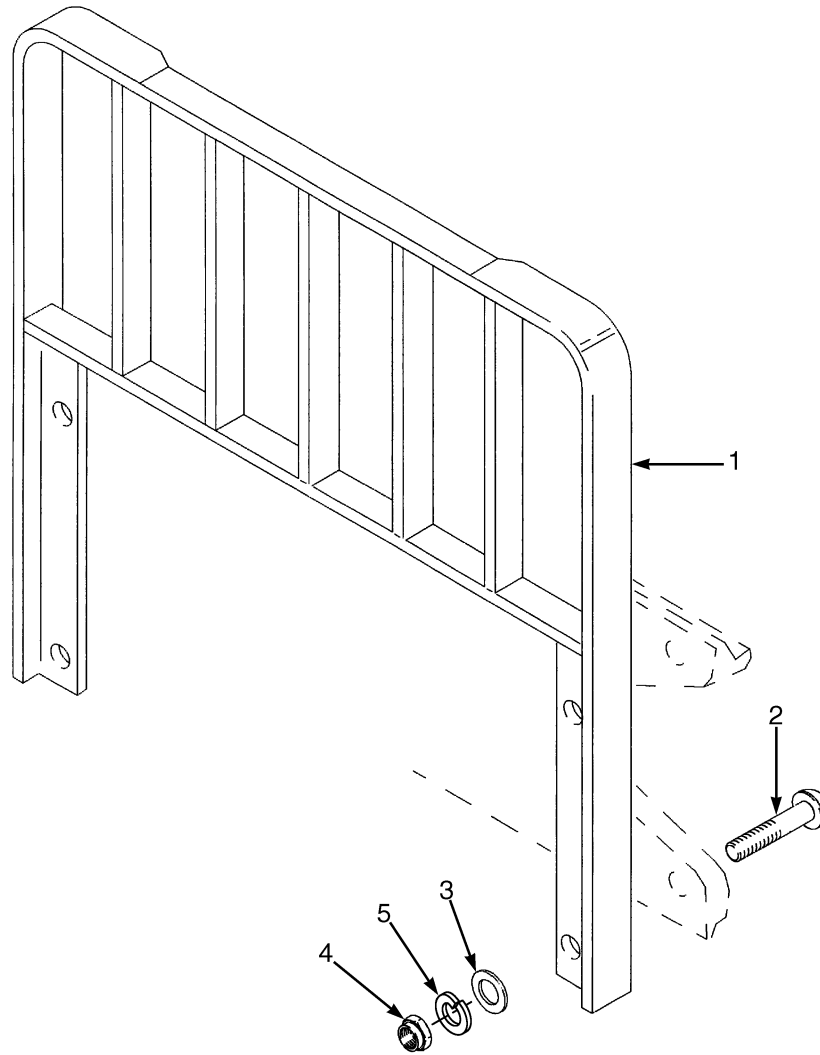
FORKS

ITEM	PART NO.	DESCRIPTION	QTY	
			A	B
5	c 1378796	Fork (1194 mm) (100 x 40 x 1200)	2
5	1378789	Fork (1219 mm) (100 x 40 x 1219)	2
5	ac 1378800	Fork (1219 mm) (100 x 40 x 1219)	2
5	1378790	Fork (1372 mm) (100 x 40 x 1372)	2
5	1378791	Fork (1524 mm) (100 x 40 x 1524)	2
6	302450	Pin	1
7	1378763	Latch	1
8	1378762	Spring	1
9	1378760	Pin	1
	1378765	Latch Kit (Class II) (Includes Items 6-9)	1
	b 1523734	Retainer Pin	1	..

FOOTNOTES:

- a** Full Bottom Taper
- b** Not Illustrated
- c** Not used on Four Stage Full-Free Lift

LOAD BACKREST EXTENSION (Figure 1-7)

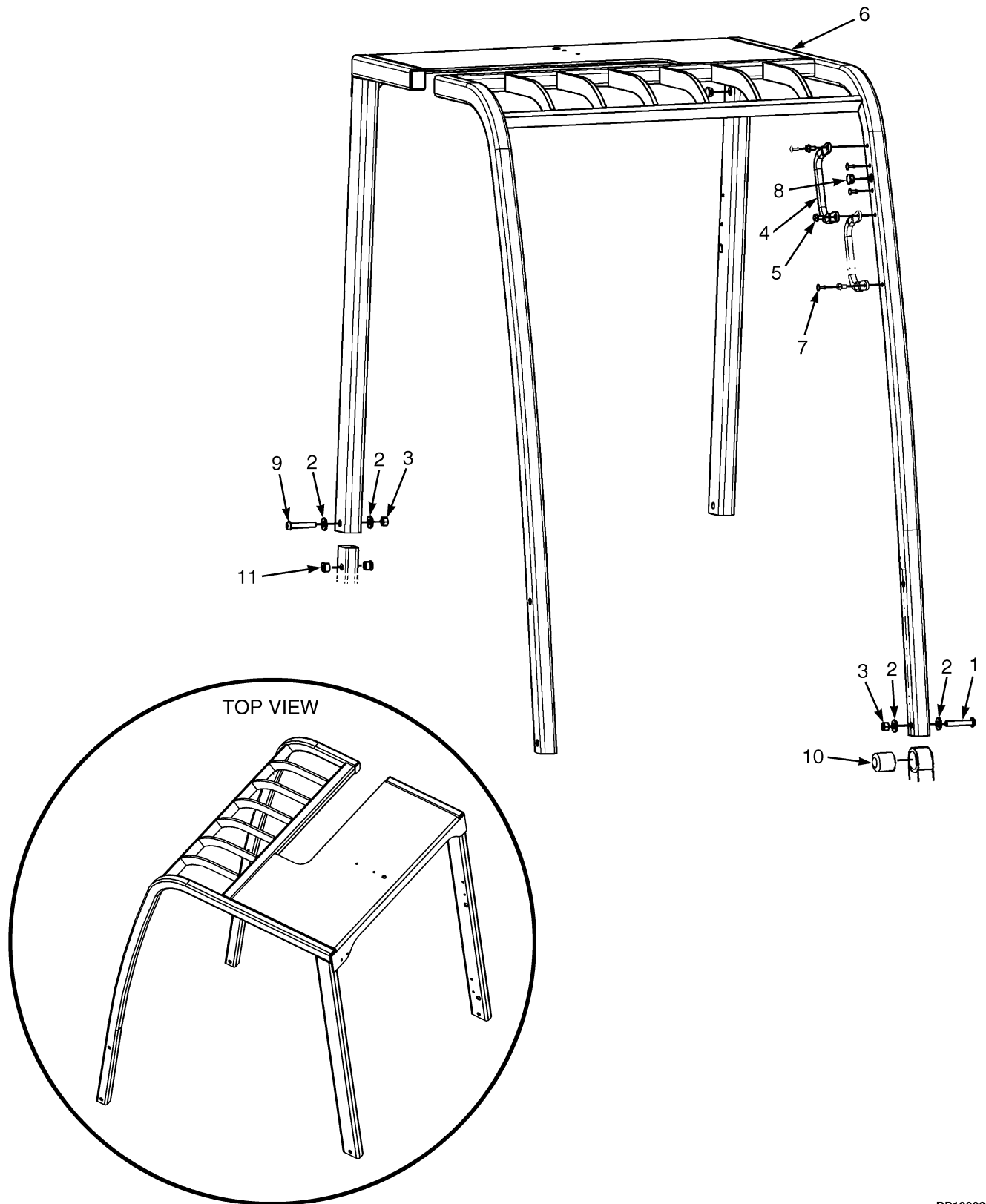


BP290015

LOAD BACKREST EXTENSION

ITEM	PART NO.	DESCRIPTION	QTY
1	1349446	Load Backrest Extension (977 mm).....	1
2	1353533	Capscrew.....	4
3	221771	Washer	4
3	296423	Washer (Optional).....	4
4	300937	Locknut	4

OVERHEAD GUARD (Figure 1-8)

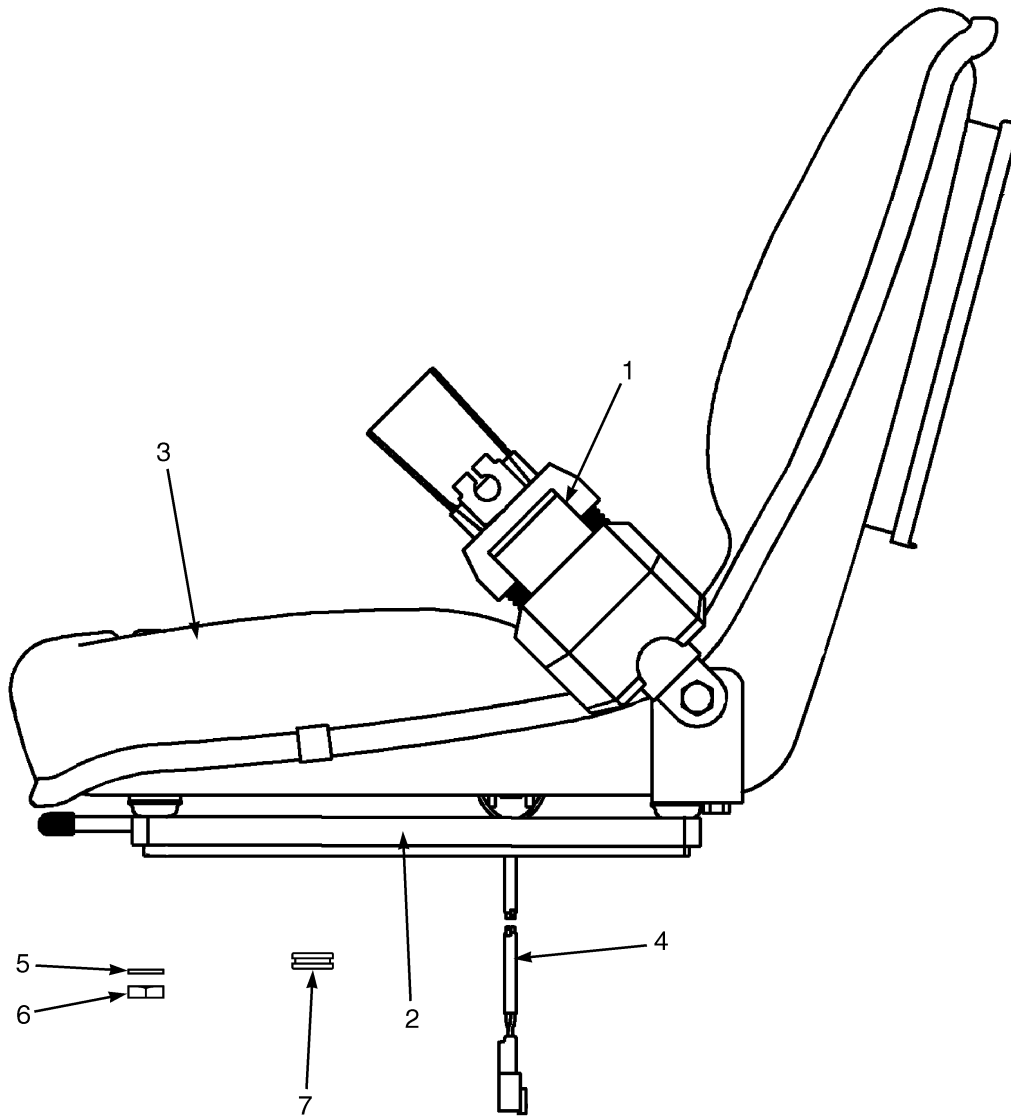


BP120039

OVERHEAD GUARD

ITEM	PART NO.	DESCRIPTION	QTY
1	2034347	Capscrew.....	4
2	320162	Washer	12
3	216877	Nut	6
4	1343647	Handle	1
5	316678	Screw.....	2
6	1534632	Overhead Guard (1290 mm).....	1
6	1534633	Overhead Guard (1385 mm).....	1
6	1534634	Overhead Guard (1495 mm).....	1
7	1363916	Plug	13
8	1363917	Plug	7
9	2034348	Capscrew.....	2
10	1553963	Bushing.....	2
11	1554932	Bushing.....	4

SEAT (Figure 1-9) NON-SUSPENSION



BP120078

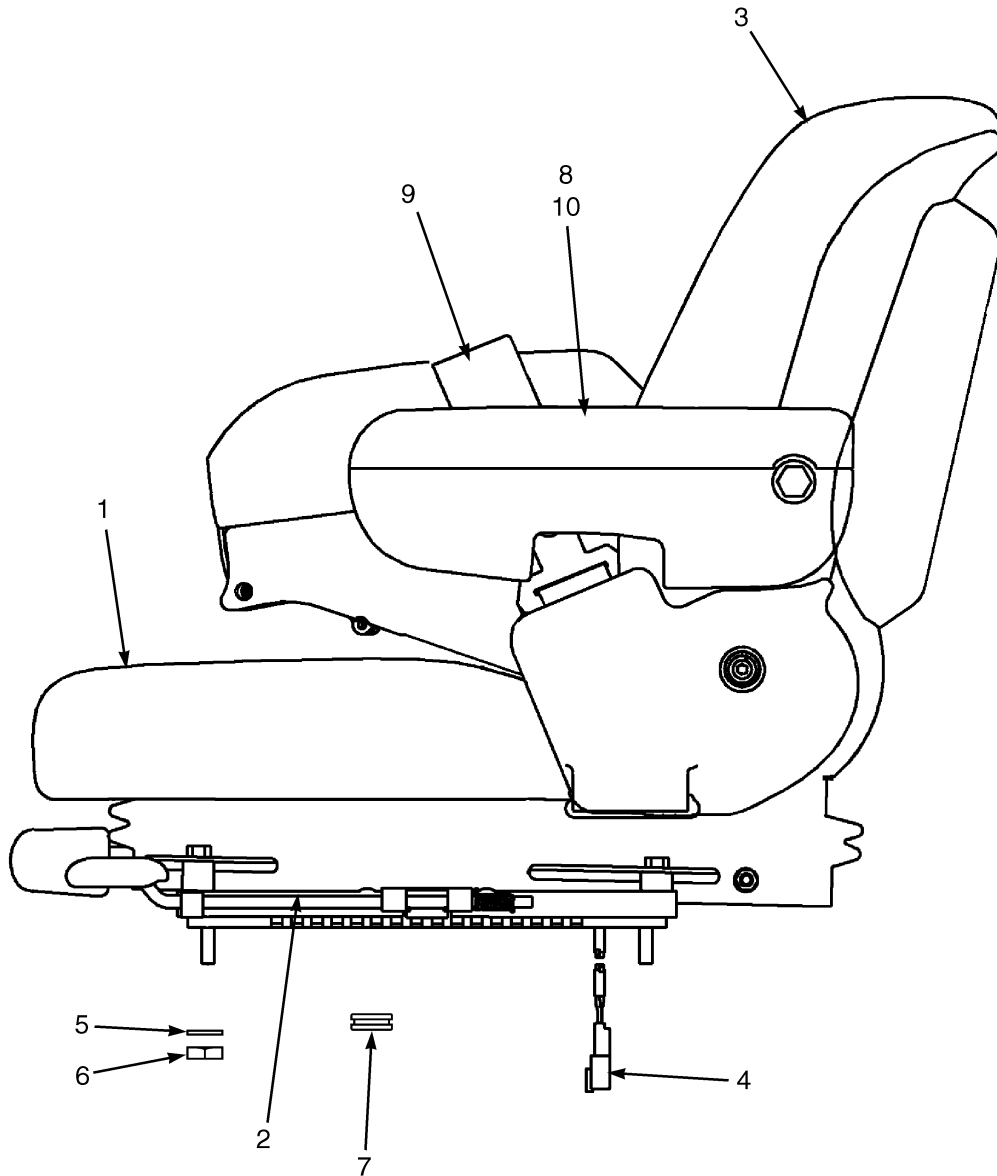
**SEAT
NON-SUSPENSION**

ITEM	PART NO.	DESCRIPTION	QTY
	1563192	Seat (Vinyl)	1
	1563193	Seat (Cloth)	1
1	1563212	Seat Belt.....	1
2	1563218	Slide	1
3	1563351	Cushions (Vinyl)	1
3	1563222	Cushions (Cloth).....	1
4	1553655	Harness.....	1
5	15175	Washer	4
6	15114	Nut	4
7	392238	Grommet.....	1
	a 1563215	Sensor (Operator Presence)	1
	a 2070392	Pigtail.....	1

FOOTNOTES:

a Not Illustrated

SEAT (Figure 1-10) FULL SUSPENSION



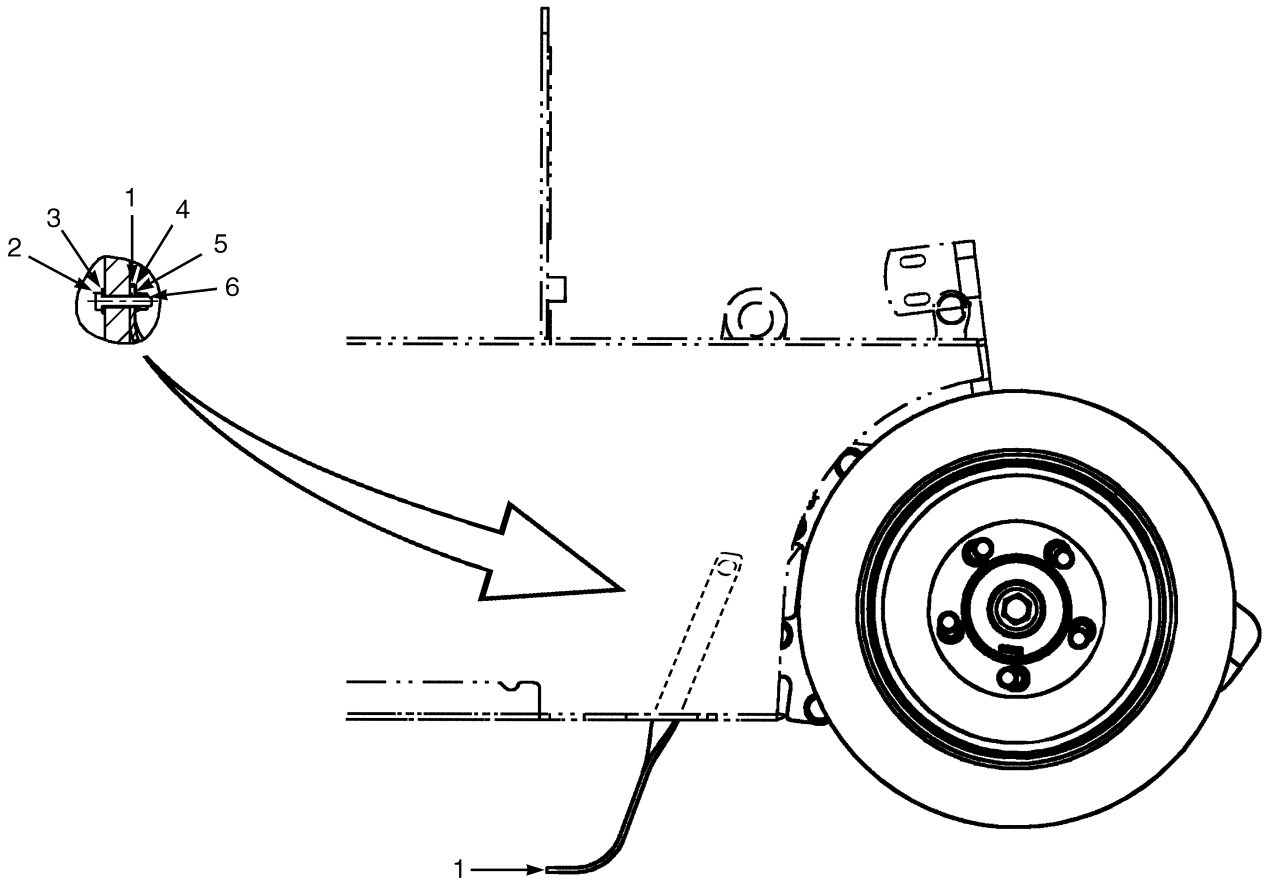
BP120077

**SEAT
FULL SUSPENSION****KEY:****A: Full Suspension (Vinyl)****B: Full Suspension (Cloth)****C: Full Suspension (Vinyl with Electronic Control Arm)****D: Full Suspension (Cloth with Electronic Control Arm)**

ITEM	PART NO.	DESCRIPTION	QTY			
			A	B	C	D
	1562665	Seat (Vinyl)	1
	1562666	Seat (Cloth)	1
	c 1540035	Seat (Vinyl)	1	..
	d 1591641	Seat (Vinyl)	1	..
	c 1540036	Seat (Cloth)	1
	d 1591642	Seat (Cloth)	1
1	1563207	Seat Cushion.....	1	..	1	..
1	1494077	Seat Cushion (Cloth).....	..	1	..	1
2	1563209	Slide	1	1	1	1
3	1470152	Back Cushion (Vinyl)	1	..	1	..
3	1470153	Back Cushion (Fabric).....	..	1	..	1
4	1553655	Harness.....	1	1
4	1553654	Harness.....	1	1
5	15175	Washer	4	4	4	4
6	15114	Nut	4	4	4	4
7	392238	Grommet.....	1	1	1	1
8	1563230	Arm Cushion.....	1	1	1	1
8	1563231	Arm Cushion.....	1	1
9	1563212	Seat Belt	1	1	1	1
10	1467516	Armrest (LH)	1	1	1	1
10	1467517	Armrest (RH)	1	1
	a 1483828	Shock Kit	1	1	1	1
	a 1467529	Suspension Spring Kit.....	1	1	1	1
	ab 1563210	Foam Cap (Electronic Control Arm)	1	1
	ab 1563211	Knobs (Electronic Control Arm).....	1	1
	a 1563208	Sensor	1	1	1	1
	a 2070392	Pigtail.....	1	1	1	1
	a 893818	Ground Wire	1	1	1	1

FOOTNOTES:**a** Not Illustrated**b** Used with Electronic Control Arm**c** ⇒ PENDING PER ECN 102360**d** PENDING PER ECN 102360 ⇒

STATIC STRAP (Figure 1-11) (PENDING PER ECN 93456⇒)

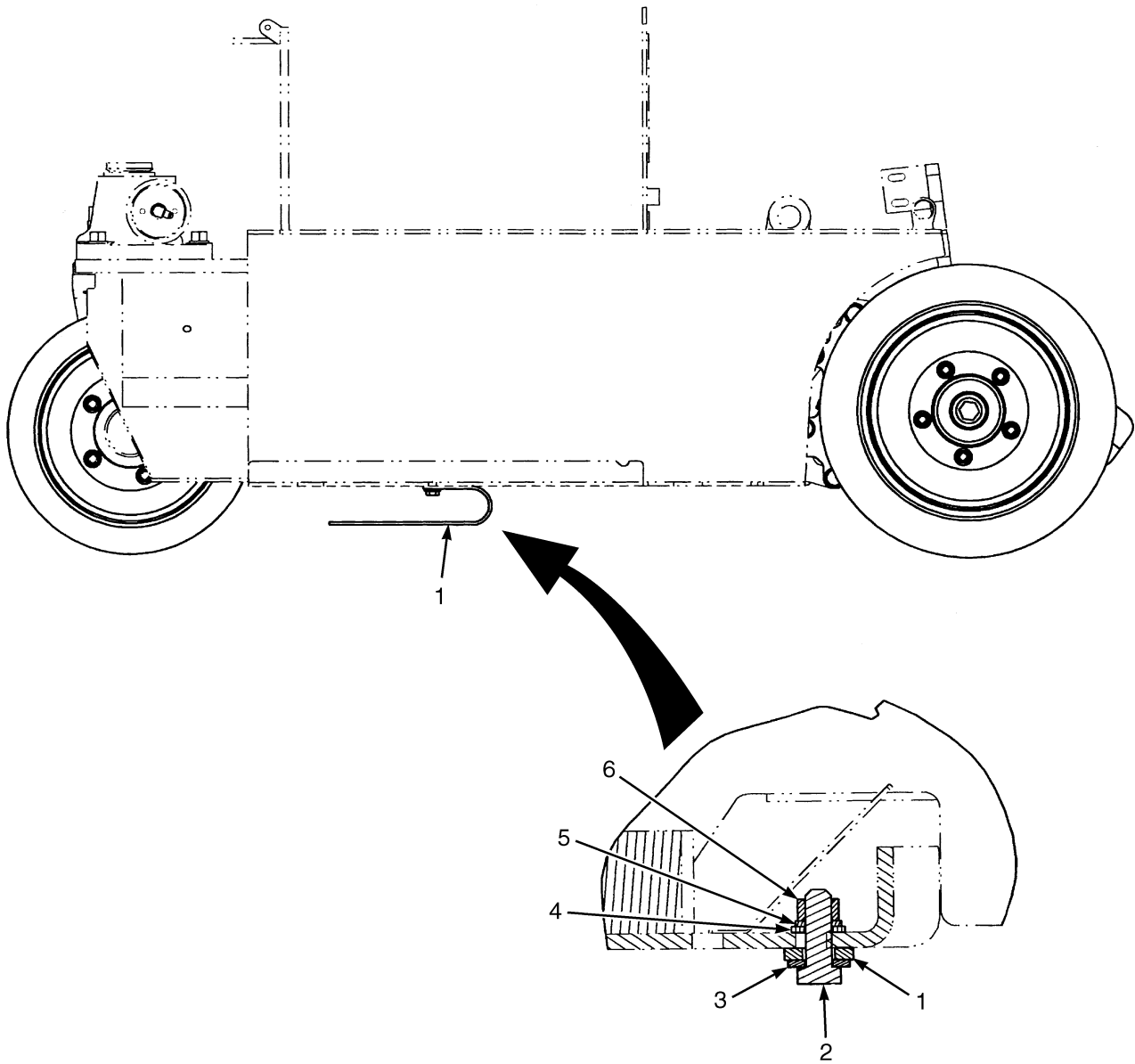


BP120164

STATIC STRAP
(PENDING PER ECN 93456⇒)

ITEM	PART NO.	DESCRIPTION	QTY
1	240074	Static Strap	1
2	292517	Capscrew.....	1
3	15176	Washer	1
4	320159	Washer	1
5	292682	Lockwasher.....	1
6	136692	Nut	1

STATIC STRAP (Figure 1-12)



BP120070

Thank you so much for reading.
Please click the “Buy Now!”
button below to download the
complete manual.



After you pay.

You can download the most
perfect and complete manual in
the world immediately.

Our support email:

ebooklibonline@outlook.com