

PARTS MANUAL

CHALLENGER

**H3.50-5.50XM H4.00XM-5, -6
H4.00XMS-6
(K005)**

CUSTOMER EDITION

HYSTER

SECTIONS

1	FRAME
2	ENGINES
3	FUEL SYSTEM
4	ELECTRICAL SYSTEM
5	TRANSMISSION
6	STEERING SYSTEM
7	BRAKE SYSTEM
8	HYDRAULIC SYSTEM
9	MAST-TWO STAGE LIMITED FREE-LIFT
10	MAST-TWO STAGE FULL FREE-LIFT
11	MAST-THREE STAGE FULL FREE-LIFT
12	OPTIONS
13	NUMERICAL INDEX

TABLE OF CONTENTS

DESCRIPTION	PAGE
A	
AIR FILTER.....	3-50
AIR SYSTEM.....	3-48
ALTERNATOR	
LPG AND DIESEL	4-28
ALTERNATOR MOUNTING	
DIESEL	
⇒S/N K005A-04694Y	2-16
S/N K005A-04695Y⇒	2-18
AUDIBLE ALARM.....	12-54
AUXILIARY TUBE EXTENSION KIT	
TWO AND THREE STAGE FULL FREE-LIFT	12-16
TWO STAGE LIMITED FREE-LIFT.....	12-14
B	
BAFFLE AND ATTACHING PARTS	2-8
BRAKE ASSEMBLY	
H3.50XM, H4.00XM-5, H4.00XMS-6	7-8
H4.00XM-6, H4.50XM, H5.00XM, H5.50XM.....	7-12
BRAKE RELAY ASSEMBLY	7-16
BRAKE SYSTEM	
HYDROSTATIC TRANSMISSION.....	7-6
POWERSHIFT	7-2
C	
CAB	
DOOR ASSEMBLY	12-66
ELECTRICAL.....	12-60
FRAME	12-58
WINDOWS AND WIPER MOTOR	12-64
CAB ATTACHING PARTS.....	12-30
CAMSHAFT AND OIL SUMP	
LPG.....	2-60
CARBURETOR	
LPG	
WITH LOW EMISSIONS	3-36
CARRIAGE	
THREE STAGE FULL FREE-LIFT	11-28
TWO STAGE FULL FREE-LIFT	10-18
TWO STAGE LIMITED FREE-LIFT.....	9-20
CONTROL VALVE	
TRANSMISSION.....	5-12
COOLANT PUMP	
DIESEL	
D/B 09/2001⇒.....	2-38
DIESEL 1004.4	
⇒D/B 09/2001	2-36
COOLING	2-4
COUNTERWEIGHT	1-22
CRANKSHAFT AND PISTON	
DIESEL	2-28

TABLE OF CONTENTS (Continued)

DESCRIPTION	PAGE
C (continued)	
CYLINDER BLOCK	
DIESEL	2-26
LPG.....	2-56
CYLINDER HEAD	
DIESEL	2-24
LPG.....	2-54
D	
DIFFERENTIAL ASSEMBLY	5-16
DISTRIBUTOR	4-32
DRIVE AXLE	
HYDROSTATIC TRANSMISSION.....	5-28
POWERSHIFT	5-24
E	
ELECTRICAL SYSTEM	
COWL	
HYDROSTATIC TRANSMISSION	4-8
POWERSHIFT TRANSMISSION	4-4
DIESEL	
⇒S/N K005A-02458.....	4-14
S/N K005A-02459⇒.....	4-18
LPG.....	4-22
LPG ALTERNATOR AND BATTERY	4-26
THROTTLE UP	
HYDROSTATIC TRANSMISSION	4-12
ENGINE AND ATTACHING PARTS	
DIESEL	2-20
LPG.....	2-48
ENGINE MOUNT	
DIESEL	2-14
LPG	
POWERSHIFT TRANSMISSION	2-52
EXHAUST	
DIESEL	2-44
LPG	
WITHOUT LOW EMISSIONS	
S/N K005A07051A⇒	2-74
LPG WITHOUT LOW EMISSIONS	
⇒S/N K005A07050A.....	2-72
THREE-WAY CATALYTIC CONVERTER	
LPG WITH LOW EMISSIONS	
⇒S/N K005A07050A	2-76
S/N K005A07051A⇒	2-78
EXHAUST MANIFOLD	
LPG	
⇒S/N K005A07050A.....	2-68
S/N K005A07051A⇒.....	2-70

TABLE OF CONTENTS (Continued)

DESCRIPTION	PAGE
F	
FAN DRIVE ASSEMBLY.....	2-10
FENDER EXTENSIONS.....	12-12
FILTER AND LOCK-OFF VALVE	
LPG	
⇒S/N K005A-03585Y	3-44
FILTER ASSEMBLY	
HYDROSTATIC TRANSMISSION.....	5-40
FLOOR PLATES AND COVERS	1-16
FORK	
ATTACHMENT CARRIAGE HOOK TYPE, STANDARD TAPER	
THREE STAGE FULL FREE-LIFT, H4.00XM-6 AND H4.50XM	11-40
TWO STAGE FULL FREE-LIFT, H4.00XM-6 AND H4.50XM	10-26
TWO STAGE LIMITED FREE-LIFT, H4.00XM-6 AND H4.50XM.....	9-25
FULL BOTTOM TAPER HOOK TYPE	
THREE STAGE FULL FREE-LIFT, H4.00XM-6, H4.50XM, H5.00XM, H5.50XM.....	11-39
TWO STAGE FULL FREE-LIFT, H4.00XM-6, H4.50XM, H5.00XM, H5.50XM.....	10-25
HOOK TYPE	
TWO STAGE LIMITED FREE-LIFT	9-24
STANDARD TAPER HOOK TYPE	
THREE STAGE FULL FREE-LIFT, H3.50XM, H4.00XM-5, H4.00XMS-6	11-38
TWO STAGE FULL FREE-LIFT, H3.50XM, H4.00XM-5, H4.00XMS-6	10-24
FREE-LIFT	
THREE STAGE FULL FREE-LIFT	11-16
FREE-LIFT CYLINDER	
THREE STAGE FULL FREE-LIFT	11-24
TWO STAGE FULL FREE-LIFT	10-14
FUEL FILTER	
LOW PRESSURE SYSTEM	
DIESEL.....	3-6
FUEL INJECTION	
DIESEL	3-8
FUEL SYSTEM	
DIESEL	3-10
LPG	
CLOSED LOOP	
D/B 12/2003⇒	3-32
⇒D/B 12/2003	3-28
LPG OPEN LOOP	
D/B 12/2003⇒.....	3-24
⇒S/N K005A-03585Y	3-16
S/N K005A-03586Y⇔D/B 12/2003	3-20
FULL SUSPENSION SEAT	
SHEET 1 OF 2.....	1-6
SHEET 2 OF 2.....	1-8
G	
GENERAL TRUCK	1-2
GOVERNOR	
LPG.....	3-47

TABLE OF CONTENTS (Continued)

DESCRIPTION	PAGE
H	
HEADER HOSE	
THREE STAGE FULL FREE-LIFT	11-32
TWO STAGE FULL FREE-LIFT	10-28
TWO STAGE LIMITED FREE-LIFT	
⇒S/N A749A-025231, ⇒S/N A750A-02672	9-14
S/N A749A-025232⇒, S/N A750A-02673⇒	9-16
HEADLIGHTS, REAR LIGHTS, AND SIDE LAMPS	
WITHOUT CAB	
⇒S/N K005A07626A.....	12-18
S/N K005A07627A⇒.....	12-20
HEATER	12-70
HEATER INSTALLATION	
DIESEL	12-76
GASOLINE.....	12-72
LPG.....	12-74
HOOD AND COVERS	1-10
HYDRAULIC CONTROL LINES	
FOUR FUNCTION	8-12
THREE FUNCTION	8-10
HYDRAULIC CONTROL VALVE	
THREE AND FOUR FUNCTION	
⇒S/N K005A-04553Y	8-20
SHEET 1 OF 2	
S/N K005A04554Y⇒	8-22
SHEET 2 OF 2	
S/N K005A04554Y⇒	8-26
HYDRAULIC CONTROL VALVE ATTACHING PARTS	
FOUR FUNCTION WITH DETENTED LEVERS	8-16
THREE FUNCTION	8-14
WITH HYDROSTATIC TRANSMISSION	8-18
HYDRAULIC FILTER HOUSING	8-28
HYDRAULIC PUMP.....	8-36
HYDRAULIC PUMP AND MOUNT	
HYDROSTATIC TRANSMISSION.....	5-32
HYDRAULIC SYSTEM	
WITH HYDROSTATIC TRANSMISSION	8-6
WITH POWERSHIFT TRANSMISSION	8-2
I	
INNER AND FREE LIFT MAST	
TWO STAGE FULL FREE-LIFT	10-6
INNER MAST	
THREE STAGE FULL FREE-LIFT	11-10
TWO STAGE LIMITED FREE-LIFT.....	9-4
INPUT AND DIRECTIONAL CLUTCH	5-10
INSTRUMENT PANEL.....	4-11
INTERMEDIATE MAST	
THREE STAGE FULL FREE-LIFT	11-6

TABLE OF CONTENTS (Continued)

DESCRIPTION	PAGE
L	
LABELS	1-29
LIFT PUMP	
DIESEL	3-14
LIFTING EYE.....	12-3
LOAD BACKREST EXTENSION	
THREE STAGE FULL FREE-LIFT	11-36
TWO STAGE FULL FREE-LIFT	10-22
TWO STAGE LIMITED FREE-LIFT.....	9-22
LOW PRESSURE SYSTEM	
DIESEL	
D/B 07/2001⇒.....	3-4
⇒D/B 07/2001.....	3-2
LPG CONVERTER	
OPEN LOOP	
⇒S/N K005A-03585Y	3-45
S/N K005A-03586Y⇔D/B 12/2003	3-46
LPG TANK AND BRACKET	
SWING OUT	3-40
LPG TANK BRACKET	
FIXED	3-38
SWING OUT/DROP DOWN.....	3-42
M	
MAIN CYLINDER	
THREE STAGE FULL FREE-LIFT	11-20
TWO STAGE LIMITED FREE-LIFT.....	9-10
MAIN LIFT	
THREE STAGE FULL FREE-LIFT	11-12
TWO STAGE LIMITED FREE-LIFT.....	9-6
MAIN LIFT CYLINDER	
TWO STAGE FULL FREE-LIFT	10-10
MANIFOLD VALVE	5-14
MANIFOLDS	
DIESEL	
D/B 07/2001⇒.....	2-42
⇒D/B 09/2001.....	2-40
MAST INSTALLATION	
⇒S/N K005A07376A	8-30
S/N K005A07377A⇒.....	8-32
MASTER CYLINDER AND BOOSTER ASSEMBLY	7-14
MIRROR	
WITHOUT CAB.....	12-28
MONOTROL PEDAL	3-68
N	
NON-SUSPENSION SEAT.....	1-4

TABLE OF CONTENTS (Continued)

DESCRIPTION	PAGE
O	
OIL FILTER	
DIESEL	2-33
OIL PUMP	
LPG.....	2-66
OIL SUMP AND PUMP	
DIESEL	2-30
OPERATOR COMPARTMENT	1-12
OUTER MAST	
THREE STAGE FULL FREE-LIFT	11-2
TWO STAGE LIMITED FREE-LIFT.....	9-2
OUTER MAST AND MAIN LIFT	
TWO STAGE FULL FREE-LIFT	10-2
OVERHEAD GUARD.....	1-14
P	
PARK BRAKE	7-18
PEDAL LINKAGE	3-66
R	
REAR DRIVE LIGHTS	
SINGLE	
WITHOUT CAB	
S/N K005A07627A⇒	12-22
ROTARY EXHAUSTER	
DIESEL	2-46
ROTATING BEACON	
WITHOUT CAB.....	12-26
S	
SCREEN	
REAR	
⇒S/N K005A-02078.....	1-24
S/N K005A-02079⇒.....	1-26
SHIFT LEVER	4-34
SIDE-SHIFT CARRIAGE	
TWO AND THREE STAGE FULL FREE-LIFT	
H3.50XM, H4.00XM-5, H4.00XMS-6.....	12-38
H4.00XM-6, H4.50XM, H5.00XM, H5.50XM	12-40
TWO STAGE LIMITED FREE-LIFT	
H3.50XM, H4.00XM-5, H4.00XMS-6.....	12-34
H4.00XM-6, H4.50XM, H5.00XM, H5.50XM	12-36
SIDE-SHIFT FRAME	
1219 MM, TWO AND THREE STAGE FULL FREE-LIFT	
H3.50XM, H4.00XM-5, H4.00XMS-6.....	12-48
1219 MM, TWO STAGE LIMITED FREE-LIFT	
H3.50XM, H4.00XM-5, H4.00XMS-6.....	12-42
1372 AND 1524 MM TWO AND THREE STAGE FULL FREE-LIFT	
H4.00XM-6, H4.50XM, H5.00XM, H5.50XM	12-52
1372 MM AND 1524 MM, TWO STAGE LIMITED FREE-LIFT	
H4.00XM-6, H4.50XM, H5.00XM, H5.50XM	12-46

TABLE OF CONTENTS (Continued)

DESCRIPTION	PAGE
S (continued)	
1524 MM, TWO AND THREE STAGE FULL FREE-LIFT H3.50XM, H4.00XM-5, H4.00XMS-6.....	12-50
1524 MM, TWO STAGE LIMITED FREE-LIFT H3.50XM, H4.00XM-5, H4.00XMS-6.....	12-44
SOUND REDUCTION	1-18
SPOT LIGHT	
WITHOUT CAB.....	12-24
STARTER MOTOR	
DIESEL	4-30
STEERING AXLE	6-8
STEERING COLUMN.....	6-4
STEERING CYLINDER	6-12
STEERING PUMP	6-6
STEERING SYSTEM	6-2
T	
THROTTLE LINKAGE	
WITH THROTTLE-UP	
DIESEL.....	3-60
WITHOUT THROTTLE UP	
DIESEL.....	3-56
LPG	3-52
THROTTLE UP ASSEMBLY	3-64
TILT CYLINDER	8-34
TIMING GEAR	
DIESEL	2-34
TIRE AND WHEEL	
DUAL DRIVE WHEEL.....	12-8
SINGLE DRIVE WHEEL.....	12-4
RADIAL	12-6
STEER WHEEL	12-10
TORQUE CONVERTER.....	5-22
TRANSMISSION	
POWERSHIFT	
SHEET 1 OF 2	5-2
SHEET 2 OF 2	5-6
TRANSMISSION LINES	
HYDROSTATIC TRANSMISSION.....	5-36
POWERSHIFT	5-18
TRANSMISSION MOUNT	5-20
TRANSMISSION PUMP	
HYDROSTATIC TRANSMISSION.....	5-34
U	
UNDERCARRIAGE PAN	1-20

TABLE OF CONTENTS (Continued)

DESCRIPTION	PAGE
V	
VALVE	
HIGH AND LOW	5-15
HYDROSTATIC TRANSMISSION.....	5-42
VALVE COVER	
DIESEL	2-22
VALVE COVER AND INLET MANIFOLD	
LPG.....	2-64
W	
WATER SEPARATOR.....	3-12
WIRE HARNESS	
AUXILIARY LIGHTS	
WORKLIGHTS	12-78
BRAKE PRESSURE SWITCH.....	4-107
CLOSED LOOP	
S/N K005A07051A⇒.....	4-63
DIAGNOSTIC.....	4-65
DIESEL ENGINE	
⇒S/N K005A-04694Y	4-36
S/N K005A-04695Y⇒	4-38
ENGINE, GM V6, 4.3L	
SHEET 1 OF 2	
⇒S/N K005A-03863Y	4-40
SHEET 2 OF 2	
⇒S/N K005A-03863Y	4-42
ENGINE, LPG, GM V6, 4.3L	
SHEET 1 OF 2	
S/N K005A-03864Y⇔S/N K005A-04695Y	4-80
S/N K005A-04695Y⇒.....	4-86
SHEET 2 OF 2	
S/N K005A-03864Y⇔S/N K005A-04695Y	4-82
S/N K005A-04695Y⇒.....	4-88
ESOS ADAPTER	
⇒D/B 09/2001.....	4-64
GASOLINE ENGINE	
⇒S/N K005A-03863Y	4-48
GASOLINE ENGINE, GM V6	
SHEET 1 OF 2	
S/N K005A-03864Y⇔S/N K005A-04695Y	4-66
SHEET 2 OF 2	
S/N K005A-03864Y⇔S/N K005A-04695Y	4-70
GASOLINE, GM V6	
SHEET 1 OF 2	4-74
SHEET 2 OF 2	4-76
HYDROSTATIC MODULE.....	4-46
LPG.....	4-50
LPG SWITCH.....	4-62
MODULE POWERSHIFT	
⇒S/N K005A03928Y.....	4-52
SHEET 1 OF 2	
S/N K005A04876Y⇒	4-92

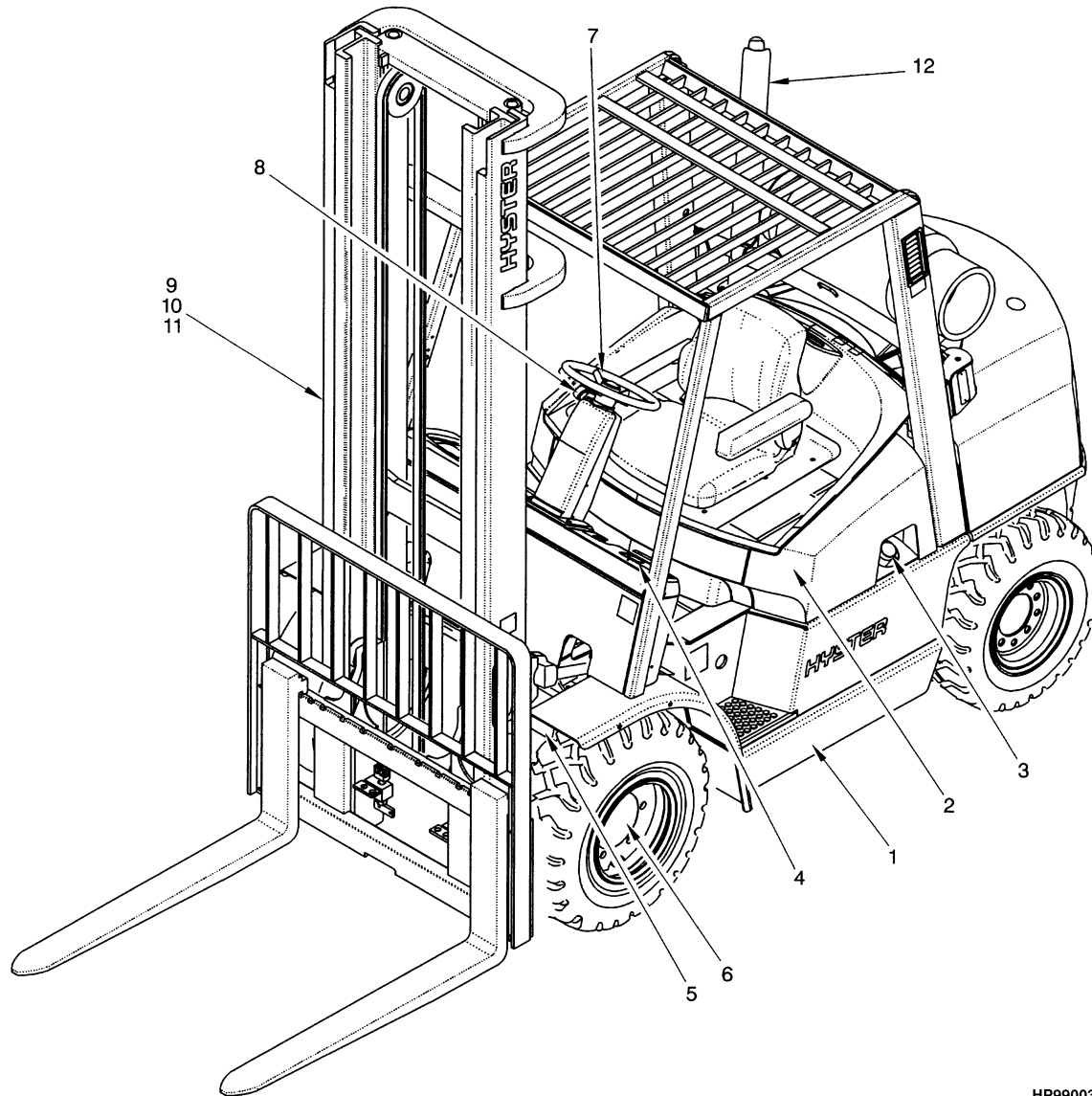
TABLE OF CONTENTS (Continued)

DESCRIPTION	PAGE
W (continued)	
SHEET 2 OF 2 S/N K005A04876Y⇒	4-96
MODULE, TYPE S POWERSHIFT	
SHEET 1 OF 2 S/N K005A-03929Y⇔S/N K005A-04876Y	4-100
SHEET 2 OF 2 S/N K005A-03929Y⇔S/N K005A-04876Y	4-104
PS TRANSMISSION CONTROL	4-54
REVERSE ALARM	12-56
THROTTLE UP	
⇒S/N K005A05764Z.....	4-56
S/N K005A05765Z⇒.....	4-60

SECTION 1
FRAME

DESCRIPTION	PAGE
COUNTERWEIGHT	1-22
FLOOR PLATES AND COVERS	1-16
FULL SUSPENSION SEAT	
SHEET 1 OF 2	1-6
SHEET 2 OF 2	1-8
GENERAL TRUCK	1-2
HOOD AND COVERS	1-10
LABELS	1-29
NON-SUSPENSION SEAT	1-4
OPERATOR COMPARTMENT	1-12
OVERHEAD GUARD	1-14
SCREEN	
REAR	
⇒S/N K005A-02078	1-24
S/N K005A-02079⇒	1-26
SOUND REDUCTION	1-18
UNDERCARRIAGE PAN	1-20

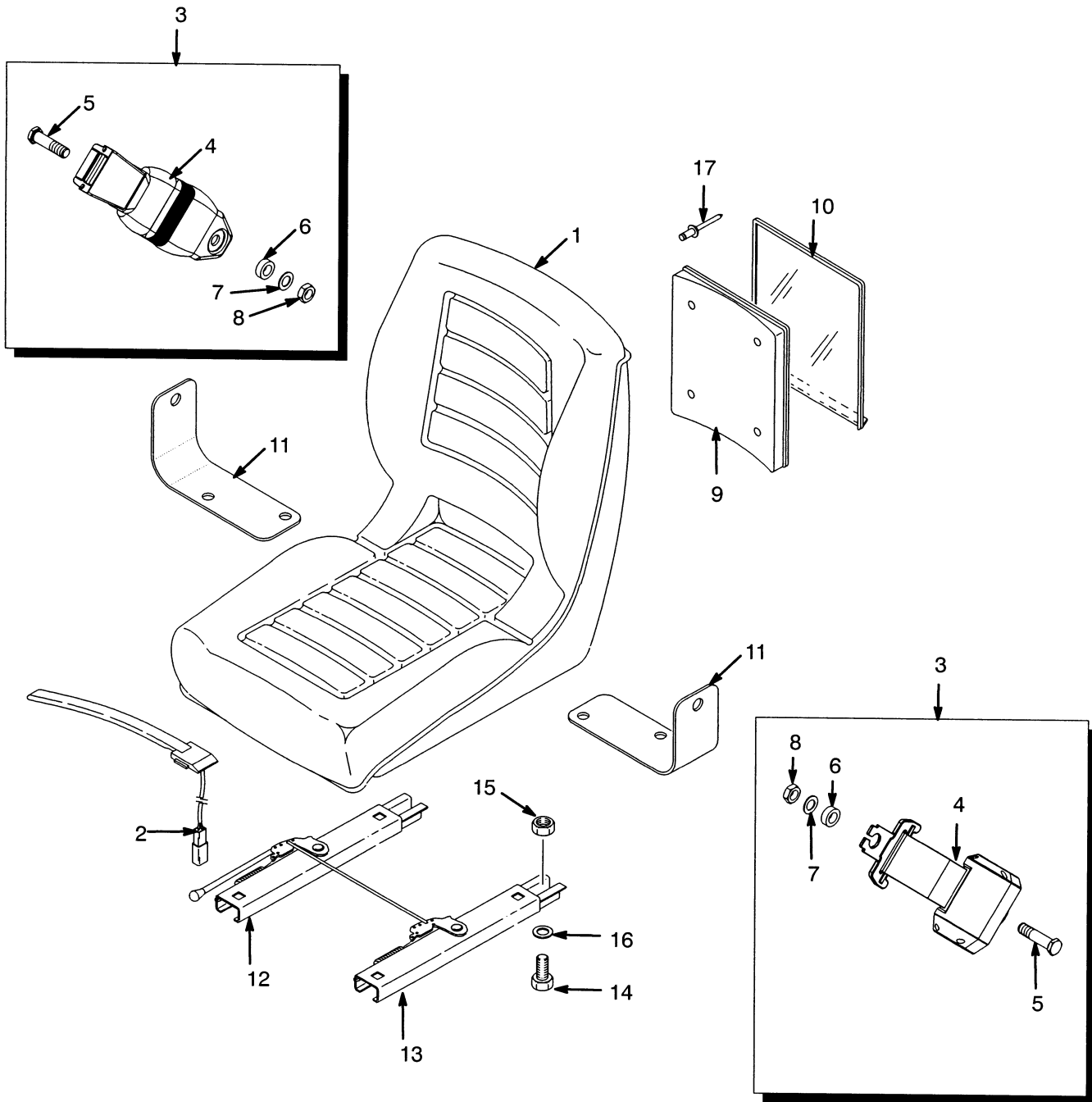
GENERAL TRUCK (Figure 1-1)



HP990030

ITEM	PART NO.	DESCRIPTION	QTY
1	Frame (☞ Figure 1-8)	1
2	Engine (☞ Figure 2-21)	1
3	Fuel System (☞ Figure 3-5)	1
4	Electrical System (☞ Figure 4-1)	1
5	Transmission (☞ Figure 5-1)	1
6	Brake System (☞ Figure 7-4)	1
7	Steering System (☞ Figure 6-1)	1
8	Hydraulic System (☞ Figure 8-1)	1
9	Mast-Two Stage Limited Free-Lift (☞ Figure 9-1)	1
10	Mast-Three Stage Full Free-Lift (☞ Figure 11-1)	1
11	Mast-Two Stage Full Free-Lift (☞ Figure 10-1)	1
12	Options (☞ Figure 12-28)	1

NON-SUSPENSION SEAT (Figure 1-2)

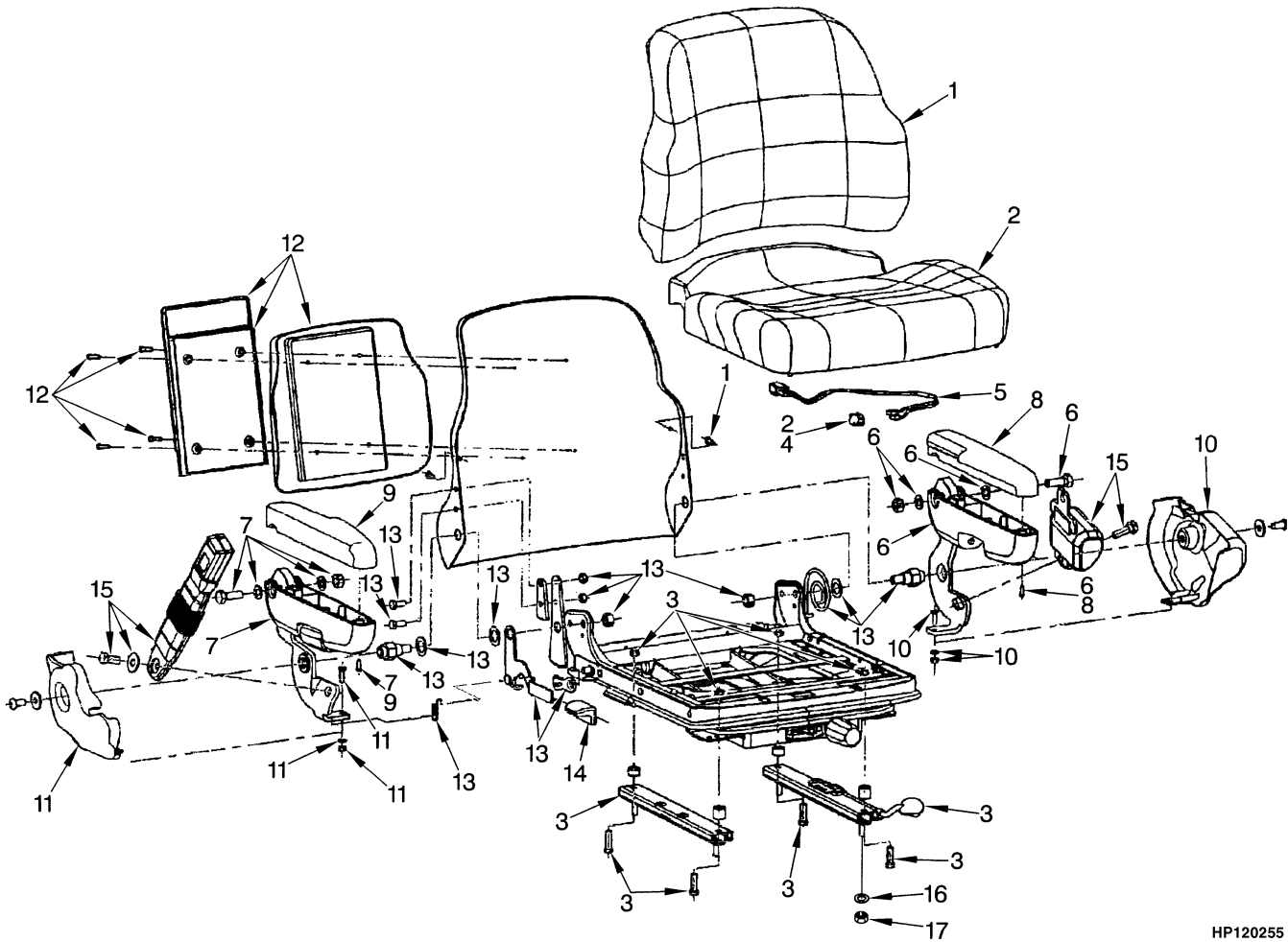


HP120254

NON-SUSPENSION SEAT

ITEM	PART NO.	DESCRIPTION	QTY
	1460231	Non-Suspension Seat.....	1
1	364911	Seat.....	1
2	2037311	Switch Assembly	1
3	1461081	Seat Belt Kit.....	1
4	Seat Belt	1
5	Screw	2
6	Washer.....	2
7	Washer.....	2
8	Nut	2
9	335988	Base (Information Case)	1
10	335991	Cover (Information Case).....	1
11	1470175	Bracket	1
12	1470176	Seat Rail.....	1
13	1470177	Seat Rail.....	1
14	18498	Capscrew.....	4
15	145639	Nut	4
16	15175	Washer	4
17	Rivet.....	4

FULL SUSPENSION SEAT (Figure 1-3) SHEET 1 OF 2

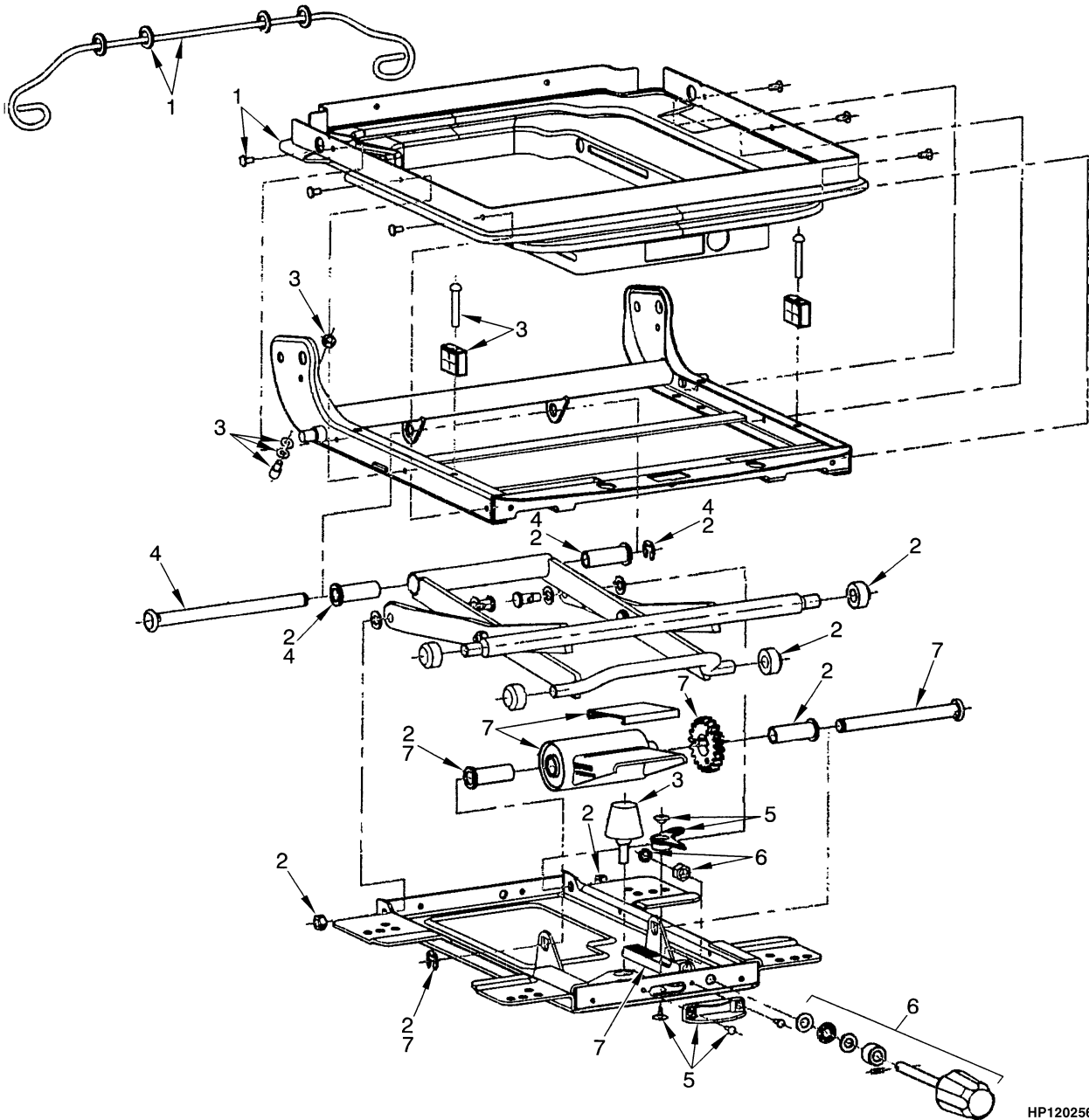


HP120255

**FULL SUSPENSION SEAT
SHEET 1 OF 2**

ITEM	PART NO.	DESCRIPTION	QTY
	1466006	Full Suspension Seat (Vinyl Cover)	1
	1466007	Full Suspension Seat (Fabric Cover)	1
1	1467533	Back Cushion (Vinyl)	1
1	1467535	Back Cushion (Fabric)	1
2	1494076	Seat Cushion (Vinyl).....	1
2	1467536	Seat Cushion (Fabric)	1
3	1467513	Slider Kit	1
4	1467514	Switch.....	1
5	1467515	Wire Harness	1
6	1467516	Armrest (LH) (LH).....	1
7	1467517	Armrest (RH) (RH)	1
8	1467518	Cap (LH).....	1
9	1467519	Cap (RH)	1
10	1467520	Cover (LH)	1
11	1467521	Cover (RH)	1
12	1467522	Holder Kit.....	1
13	1467530	Recliner Kit.....	1
14	1467531	Recliner Knob.....	1
15	1467532	Seat Belt Kit.....	1
16	15175	Washer	4
17	145639	Nut	4

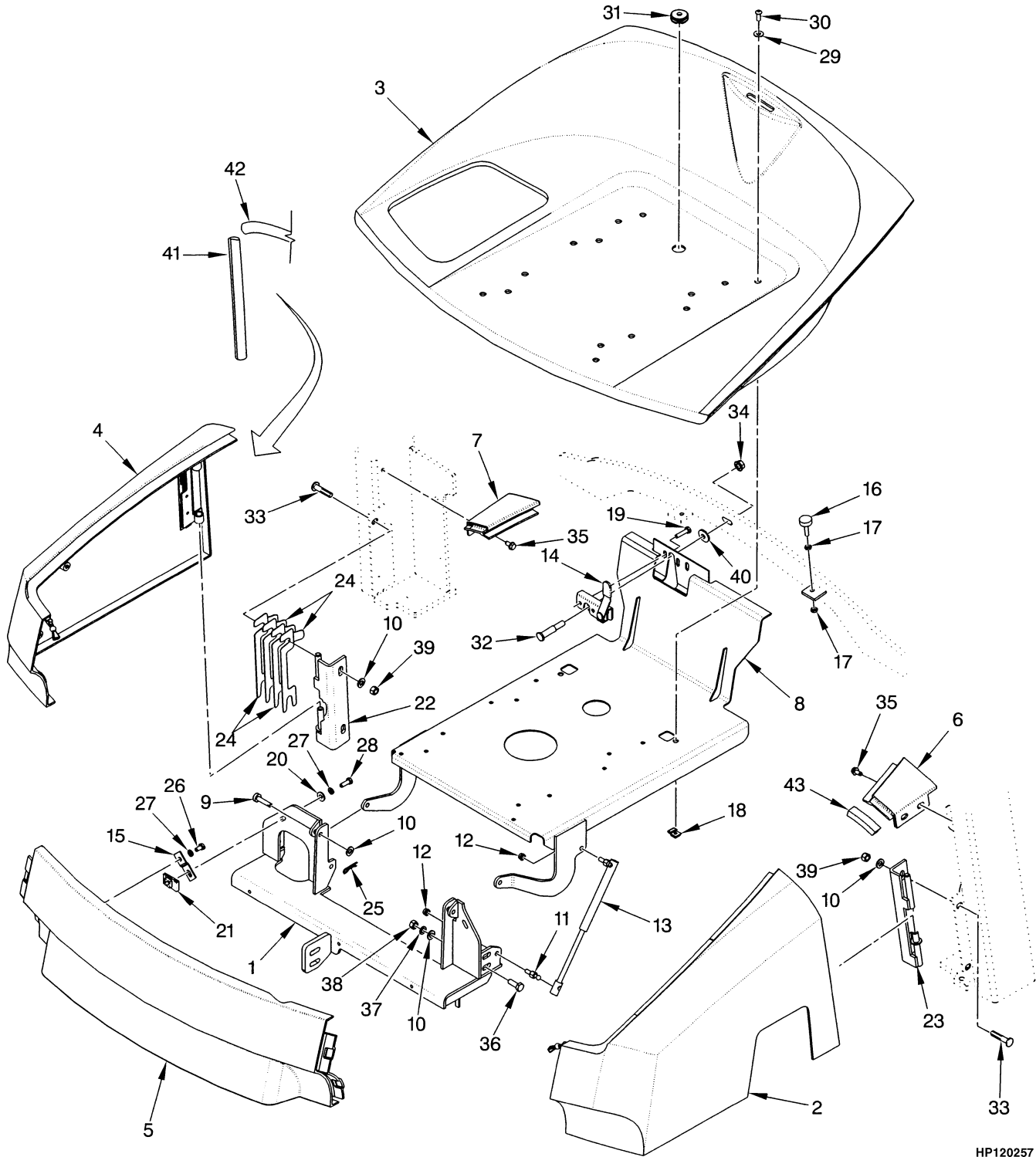
FULL SUSPENSION SEAT (Figure 1-4) SHEET 2 OF 2



**FULL SUSPENSION SEAT
SHEET 2 OF 2**

ITEM	PART NO.	DESCRIPTION	QTY
	1466006	Full Suspension Seat (Vinyl Cover)	1
	1466007	Full Suspension Seat (Fabric Cover)	1
1	1467523	Boot Kit.....	1
2	1467524	Roller and Bearing Kit	1
3	1467525	Bumper and Stop Kit	1
4	1467526	Bearing Shaft Kit	1
5	1467527	Weight Adjuster Indicator Kit	1
6	1467528	Knob Kit.....	1
7	1467529	Suspension Spring Kit.....	1

HOOD AND COVERS (Figure 1-5)

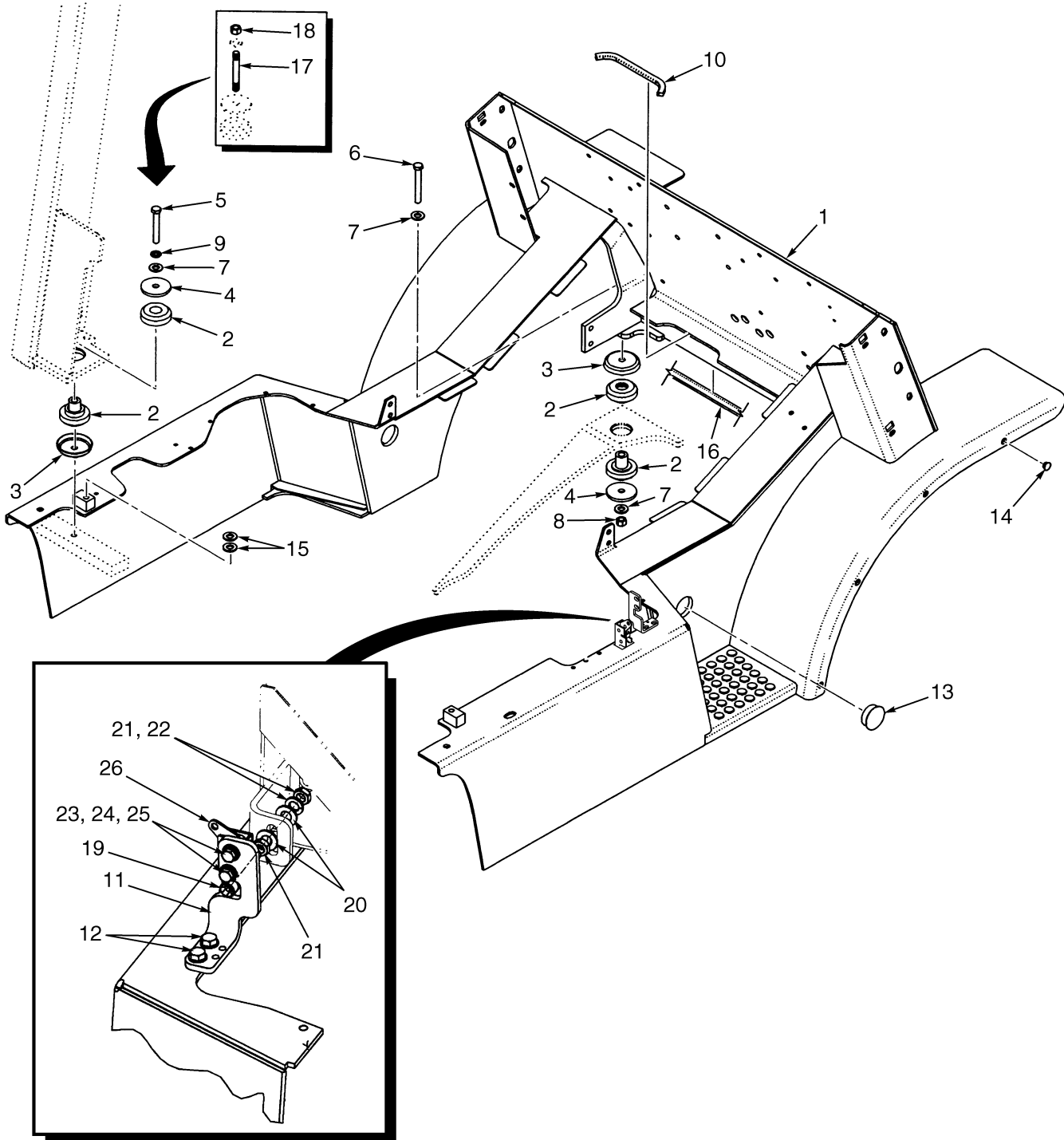


HP120257

HOOD AND COVERS

ITEM	PART NO.	DESCRIPTION	QTY
1	1491109	Crossmember	1
2	1397957	Panel (LH) (LPG)	1
2	1397958	Panel (LH) (Diesel)	1
3	1397960	Hood (Vented).....	1
4	1396626	Panel (RH)	1
5	1396625	Cover (Front).....	1
5	1392718	Latch (Over Center).....	2
6	1397964	Corner (LH) (Without Cab)	1
6	1485280	Corner (LH) (With Cab)	1
7	1397963	Corner (RH) (Without Cab).....	1
7	1485281	Corner (RH) (With Cab).....	1
8	1488684	Seat Pan	1
9	2021207	Pin	2
10	320159	Washer	10
11	1350285	Stud (Ball).....	1
12	316835	Nut	4
13	1518858	Gas Spring Assembly	2
13	1518888	Gas Spring	1
13	1513907	Ball Stud	2
14	2036143	Latch	1
15	2036866	Bracket.....	2
16	1347088	Stop Screw	2
17	15001	Nut	4
18	1385535	Nut	2
19	1529238	Capscrew.....	2
20	320158	Washer	4
21	1364259	Clip	2
22	1567198	Hinge (RH).....	1
23	1470009	Hinge (LH)	1
24	2036142	Shim (1,194 mm)	4
25	1362714	Cotter Pin.....	2
26	287851	Capscrew.....	2
27	292681	Lockwasher.....	6
28	136749	Capscrew.....	2
29	375629	Washer	2
30	370599	Capscrew.....	2
31	1359587	Grommet.....	1
32	1471866	Striker	1
33	220023	Bolt	4
34	264144	Nut	1
35	316678	Screw.....	4
36	136985	Capscrew.....	8
37	320157	Washer	2
38	316826	Nut	2
39	156133	Nut	8
40	2036863	Washer	1
41	1464909	Trim Seal.....	2
42	1396658	Seal	2
43	1466416	Seal	2

OPERATOR COMPARTMENT (Figure 1-6)

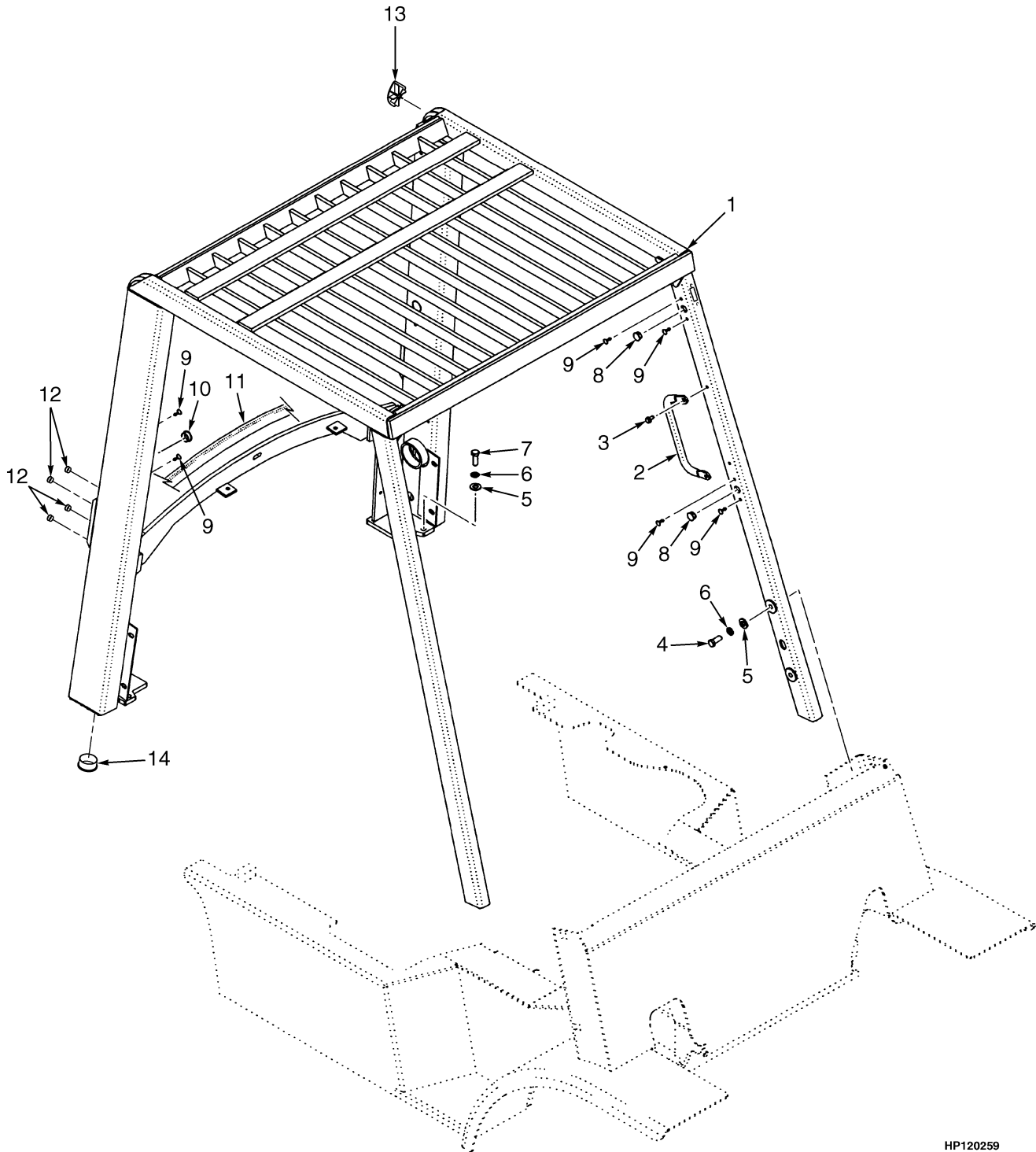


HP120258

OPERATOR COMPARTMENT**KEY:****A: H3.50XM, H4.00XM-5, H4.00XMS-6****B: H4.00XM-6, H4.50-5.50XM**

ITEM	PART NO.	DESCRIPTION	QTY	
			A	B
1	1493147	Operator Module (1830 mm Short Wheel Base)	1	..
1	1493148	Operator Module (2100 mm Long Wheel Base)	1
2	1378168	Mount.....	4	4
3	1378197	Cup	4	4
4	300939	Washer	4	4
5	293655	Capscrew.....	2	2
6	293657	Capscrew.....	2	2
7	296423	Washer	6	6
8	302402	Nut	2	2
9	292683	Lockwasher.....	2	2
10	1396024	Trim.....	1	1
11	1476761	Bracket.....	1	1
12	316678	Screw.....	2	2
13	1398009	Plug	2	2
14	1399760	Plug	8	8
15	296422	Washer	4	4
16	1396657	Seal	AR	AR
17	2037998	Stud (Optional)	2	2
17	264134	Sealant	AR	AR
18	300937	Locknut (Optional)	2	2
19	18762	Capscrew.....	1	1
20	15134	Washer	2	2
21	15086	Nut	2	2
22	15156	Lockwasher.....	1	1
23	18462	Capscrew.....	2	2
24	15154	Lockwasher.....	2	2
25	15127	Washer	2	2
26	1476422	Latch (Rotary).....	1	1

OVERHEAD GUARD (Figure 1-7)



HP120259

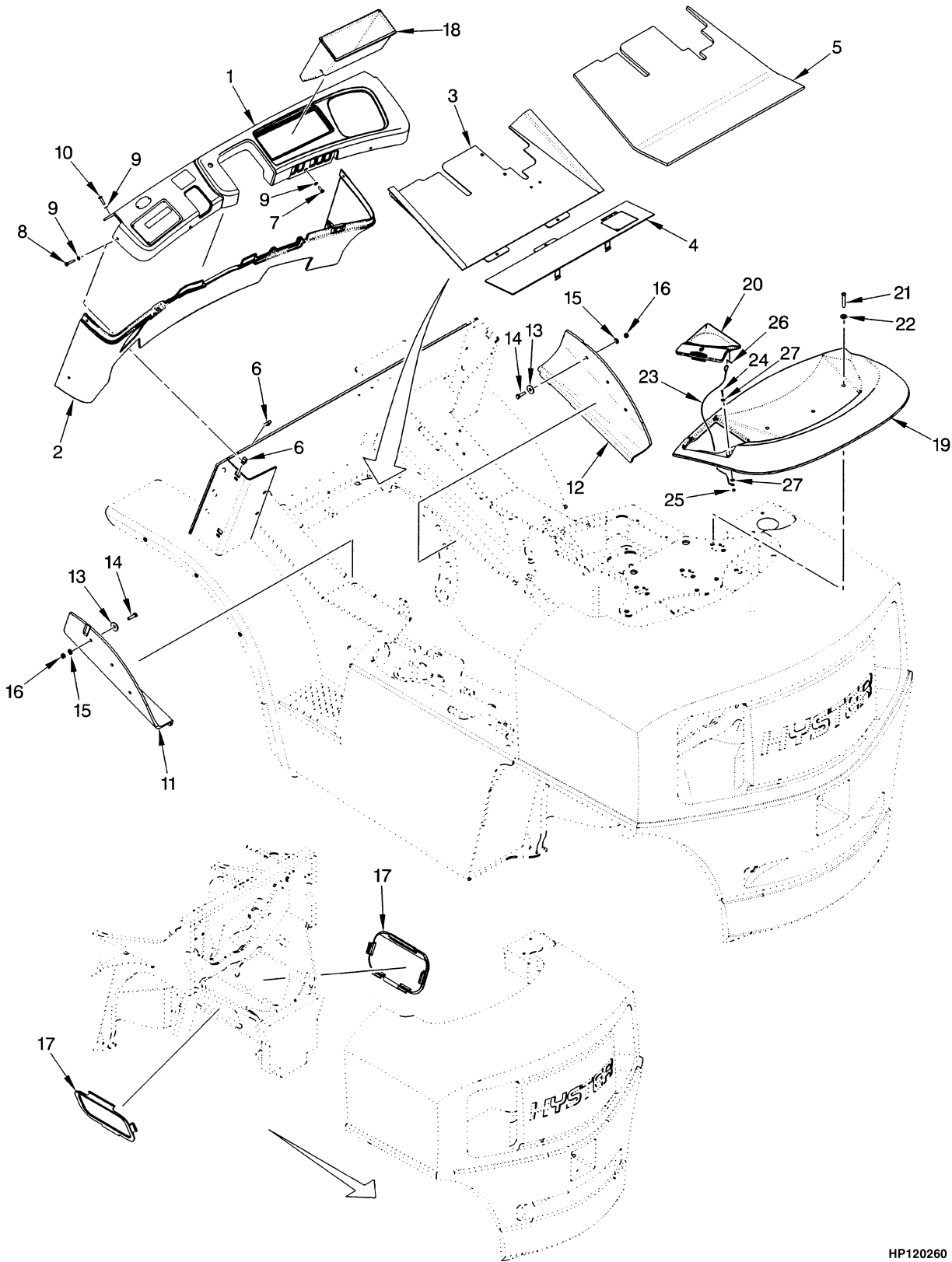
OVERHEAD GUARD

ITEM	PART NO.	DESCRIPTION	QTY
1	a 1397720	Overhead Guard (Standard Height).....	1
1	b 1483504	Overhead Guard (Standard Height).....	1
1	a 1396669	Overhead Guard (Raised Height).....	1
1	b 1479585	Overhead Guard (Raised Height).....	1
2	2035800	Handle	1
3	316678	Screw.....	2
4	293644	Capscrew.....	4
5	296423	Washer	6
6	292683	Lockwasher.....	6
7	293646	Capscrew.....	2
8	1363917	Plug	6
9	d 1363916	Plug	16
9	e 1363916	Plug	14
10	d 1363918	Plug	2
10	e 1363918	Plug	4
11	1465740	Seal	1
12	d 1509037	Plug	2
12	e 1494888	Plug	2
13	c 1479633	Plug (Top Rail End Cap)	2
13	e 1479633	Plug (Top Rail End Cap)	4
14	e 1356377	Plug	2

FOOTNOTES:

- a** ⇒ S/N K005A-03237
b S/N K005A-03238 ⇒
c S/N K005A-03238⇒S/N PENDING PER ECN 92500
d ⇒ D/B 08/2002
e D/B 08/2002 ⇒

FLOOR PLATES AND COVERS (Figure 1-8)

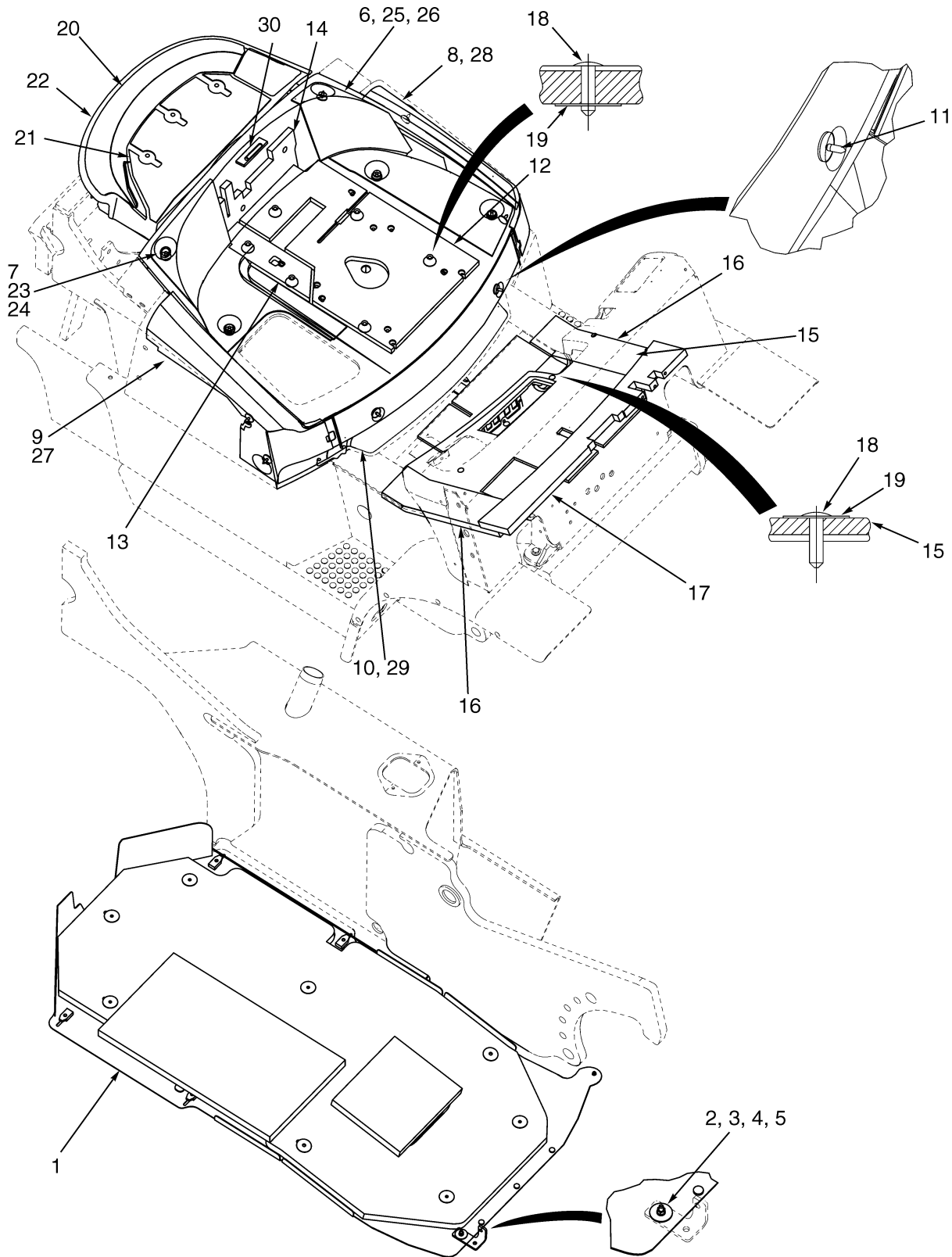


HP120260

FLOOR PLATES AND COVERS

ITEM	PART NO.	DESCRIPTION	QTY
1	1396147	Dash	1
2	1396148	Cowl Panel.....	1
3	2035798	Floorplate (Front)	1
4	2035980	Floorplate.....	1
5	1396641	Floormat	1
6	1350215	Nut (Foldover).....	6
7	1525246	Screw.....	3
8	1525248	Screw.....	4
9	1399399	Washer	9
10	1525247	Screw.....	2
11	1399337	Flap (RH Cylinder)	1
12	1399338	Flap (LH Cylinder)	1
13	1334790	Washer	6
14	176640	Capscrew.....	6
15	320157	Washer	6
16	302400	Locknut	6
17	2036875	Cover	2
18	1338286	Storage Compartment (For OHG Only).....	1
18	1400207	Cover (For Cabs Only).....	1
19	1385498	Cover (Radiator)	1
20	1396009	Radiator Cap Door (LPG)	1
20	1396012	Radiator Cap Door (Diesel)	1
21	1464899	Capscrew.....	3
22	375629	Washer	3
23	1400180	Lanyard.....	1
24	296510	Screw.....	1
25	302398	Nut	1
26	15212	Cotter Pin.....	1
27	320156	Washer	2

SOUND REDUCTION (Figure 1-9)

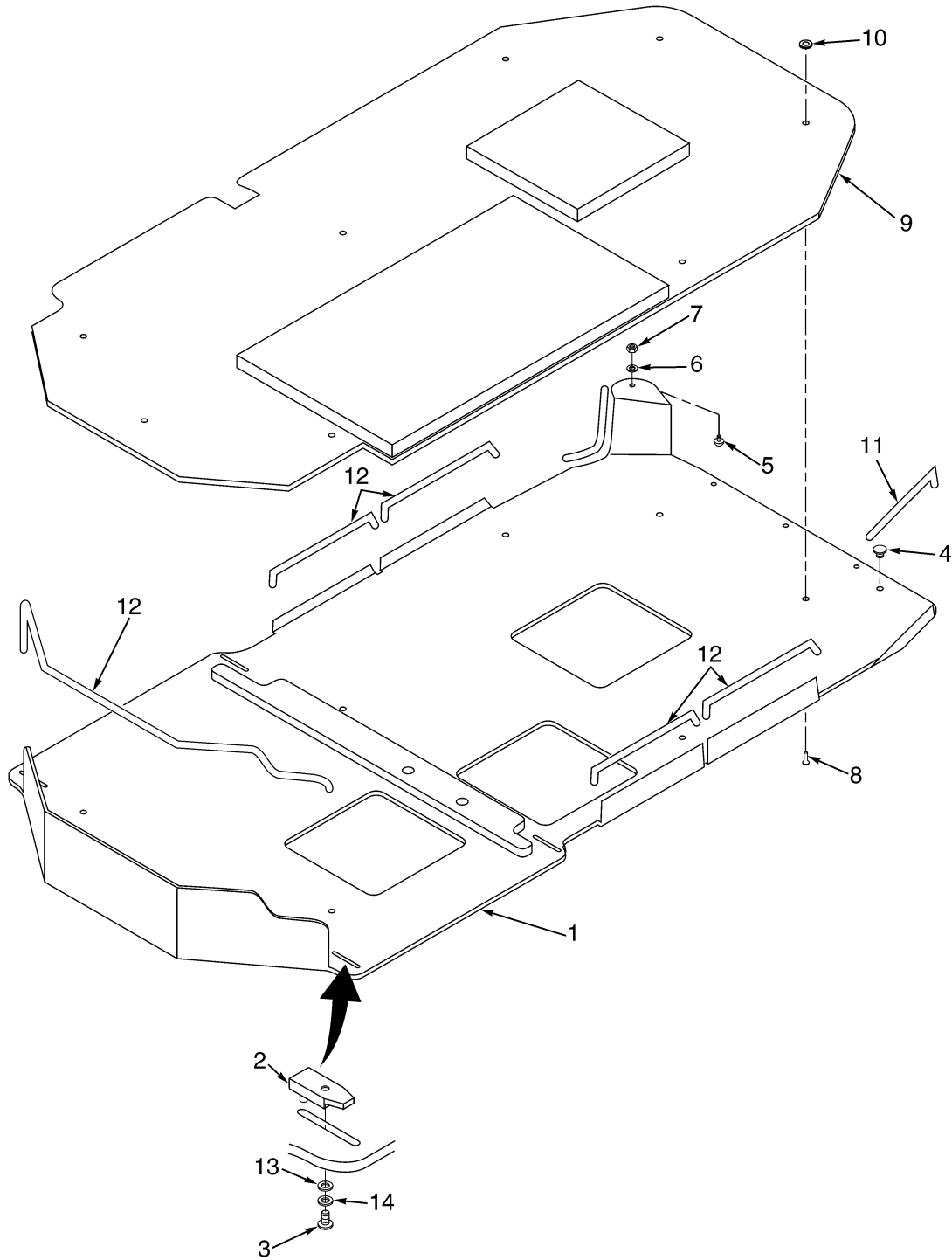


HP120637

SOUND REDUCTION**KEY:****A: 1830 mm Short Wheel Base****B: 2100 mm Long Wheel Base**

ITEM	PART NO.	DESCRIPTION	QTY	
			A	B
1	1399809	Undercarriage Pan (☞ Figure 1-10)	1	..
1	1399810	Undercarriage Pan (☞ Figure 1-10)	1
2	293603	Capscrew	1	1
3	2034906	Washer	2	2
4	292680	Lockwasher	1	1
5	136687	Nut.....	1	1
6	1400151	Liner (LH Hood).....	1	1
7	1400152	Liner (RH Hood).....	1	1
8	1400153	Liner (LH Door Panel)	1	1
9	1400154	Liner (RH Door Panel).....	1	1
10	1400155	Liner (Front Cover)	1	1
11	1304971	Fastener	11	11
12	1468020	Sound Liner (Seat)	1	1
13	1468021	Sound Liner (Seat)	1	1
14	1468022	Sound Liner (Seat)	1	1
15	1468023	Sound Liner (Floor Plate)	1	1
16	1468024	Sound Liner (Floor Plate)	2	2
17	1468025	Cowl Barrier.....	1	1
18	1399815	Rivet	15	15
19	1399784	Washer	15	15
20	1468032	Sound Liner (Radiator Cover)	1	1
21	1468033	Sound Liner (Radiator Barrier)	1	1
22	1382126	Seal	AR	AR
23	1467338	Barrier (RH Seat Panel)	1	1
24	1467340	Barrier (RH Seat Panel)	1	1
25	1467342	Barrier (LH Seat Panel)	1	1
26	1467343	Barrier (LH Seat Panel)	1	1
27	1467344	Barrier (RH Door Panel).....	1	1
28	1467345	Barrier (LH Door Panel).....	1	1
29	1467347	Barrier (Front Panel).....	1	1
30	1490766	Pad (Latch).....	1	1
	1468027	Barrier Kit (Includes Items 23-30).....	1	1

UNDERCARRIAGE PAN (Figure 1-10)



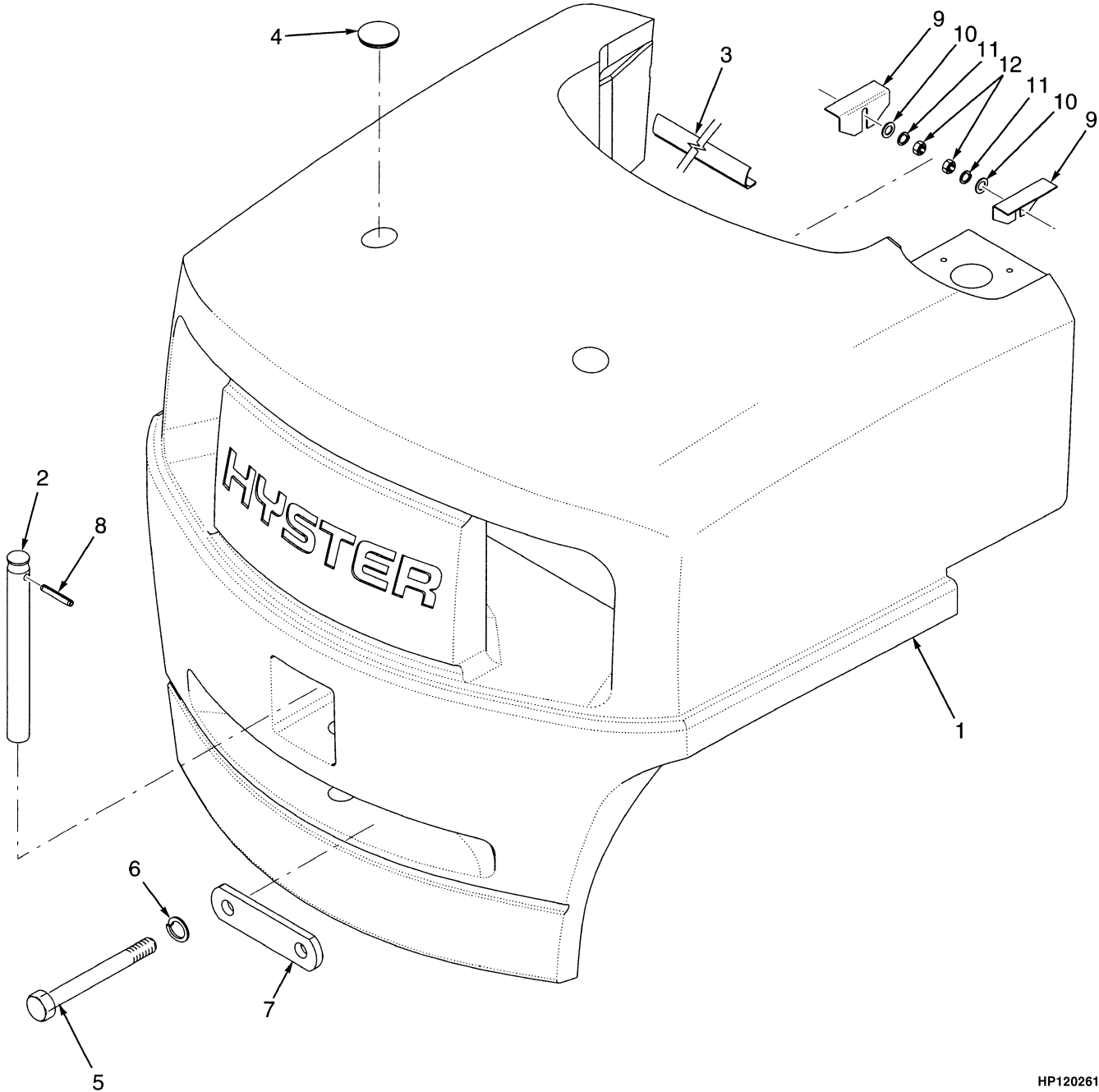
HP120636

UNDERCARRIAGE PAN**KEY:****A: 1830 mm Short Wheel Base****B: 2100 mm Long Wheel Base**

ITEM	PART NO.	DESCRIPTION	QTY	
			A	B
	a 1399809	Undercarriage Pan (Assembly).....	1	..
	b 1399810	Undercarriage Pan (Assembly).....	..	1
1	1397647	Pan	1	..
1	1397651	Pan	1
2	1399818	Nut.....	4	4
3	1399820	Capscrew	4	4
4	1399817	Bumper.....	3	3
5	1399816	Screw	1	1
6	320155	Washer	1	1
7	302398	Nut.....	1	1
8	1399815	Rivet	8	8
9	1399813	Liner	1	..
9	1399814	Liner	1
10	1399784	Washer	8	8
11	1399829	Edge Strip (250 mm)	2	2
12	1399830	Edge Strip (420 mm)	4	4
13	320156	Washer	4	6
14	292680	Lockwasher	4	6

FOOTNOTES:**a** H3.50XM-H4.00XMS-6**b** H4.00XMS-H5.50XM

COUNTERWEIGHT (Figure 1-11)



HP120261

Thank you so much for reading.
Please click the “Buy Now!”
button below to download the
complete manual.



After you pay.

You can download the most
perfect and complete manual in
the world immediately.

Our support email:

ebooklibonline@outlook.com