

5275 C from serial no. 553900001

5275 C PL from serial no. 554000013

6335 C from serial no. 564000001

6335 C PL from serial no. 564100007

**ORIGINAL
OPERATOR'S MANUAL**

FENDT

TABLE OF CONTENTS

- 1. General Information**
- 2. Operation**
- 3. Controls and Instruments**
- 4. Field Operations**
- 5. Lubrication and Maintenance**
- 6. Adjustments**
- 7. Systems**
- 8. Troubleshooting**
- 9. Off-Season Storage**
- 10. Optional Equipment**
- 11. Technical Specifications**
- 12. Alphabetical Index**

CONTENTS

	Section-page
1. GENERAL INFORMATION	
Customer information	1-1
Appropriate use	1-3
Combine identification	1-4
Ecology: information for the prevention of environmental pollution	1-9
Safety	1-10
Emergency exit	1-32
Safety devices	1-33
Towing the combine	1-41
Fire resistance inside the cab	1-41
Noise level in the cab	1-42
Ambient noise in motion Directive 2009/63/EC	1-42
Vibrations in the cab	1-42
Statutory regulations	1-43
Hydraulic systems: hoses	1-43
Scrapping and disposal	1-44
Electromagnetic emissions	1-44
Notes for road transport	1-45
Weight distribution	1-47
2. OPERATION	
Crop processing	2-1
3. CONTROLS AND INSTRUMENTS	
Steering column	3-1
Control Pedals	3-2
Multifunction lever	3-3
Gearshift lever and reversing lever	3-5
Control panel (5275 C e 6335 C models)	3-6
Control panel (5275 C PL and 6335 C PL models)	3-7
Computer	3-12
Cab	3-34
Access to combine components	3-44
Starting the engine	3-47
Stopping the engine	3-48
Operations to be carried out before road transport	3-49
Before using the combine	3-51
4. FIELD OPERATIONS	
General Information	4-1
Starting and Stopping the Combine	4-2
Cutting table	4-4
Main Crop Elevator	4-9
Cylinder Housing	4-13
Concave	4-14
Rear beater	4-19
Multi Crop Separator	4-20
Straw walkers	4-23
Main Grain Pan	4-24
Fanning mill	4-27
Top sieve	4-28
Bottom sieve	4-29
Returns	4-30
Grain tank	4-31

CONTENTS

	Section-page
5. LUBRICATION AND MAINTENANCE	
General information	5-1
Preliminary Service Inspection	5-2
Scheduled Service Inspection	5-3
Where and When to Carry Out Service Inspection	5-4
Periodical maintenance operations	5-37
Capacities and specifications 5275 C and 5275 C PL	5-40
Capacities and specifications 6335 C and 6335 C PL	5-41
Service Schedule	5-42
6. ADJUSTMENTS	
Belt and chain adjustment	6-1
Belts and chains (left-hand side)	6-2
Belts and chains (right-hand side)	6-11
Reverse drive system	6-17
Slip clutches	6-19
Unloading tube	6-20
Tyres	6-21
Brakes	6-25
Rear axle	6-26
Battery	6-30
7. SYSTEMS	
Engine supply system	7-2
Engine air intake and exhaust system	7-5
Engine cooling system	7-6
Engine lubrication system	7-8
SCR System	7-9
Hydraulics system	7-11
Hydrostatic transmission system	7-20
Electrical system	7-22
8. TROUBLESHOOTING	
Feeding	8-1
Threshing	8-1
Separation and cleaning	8-3
Hydrostatic Transmission	8-5
Engine	8-6
Hydraulics system	8-13
Levelling Hydraulics System	8-13
Electrical System	8-14
Air conditioning circuit	8-14
Straw Chopper	8-18
9. OFF-SEASON STORAGE	
10. OPTIONAL EQUIPMENT	
11. TECHNICAL SPECIFICATIONS	
Wheels and tyres	11-1
Combine dimensions	11-4
Clearance between unloading auger and table	11-10
Technical specifications - 5275 C and 6335 C	11-11
Technical specifications - 5275 C PL and 6335 C PL	11-18
12. ALPHABETICAL INDEX	

1. GENERAL INFORMATION

1.1 CUSTOMER INFORMATION

INTRODUCTION

Your new self-propelled combine is manufactured for harvesting seed and cereal crops, for threshing, separating, cleaning and conveying the grain into the tank and depositing the straw on the ground.

This Operator's Manual should be used as a practical reference guide: It contains all the necessary practical information for the operation, adjustment and maintenance of your new machine.

Your combine was designed and built to ensure optimum performance, comfort and ease-of-operation in a wide variety of crops and conditions.

The combine has been thoroughly inspected prior to delivery both at the factory and by your Dealer, to ensure you receive it in perfect condition.

To keep the combine in perfect condition and to ensure trouble-free performance, the periodical maintenance operations listed in this manual should be carried out at the recommended intervals.

Before operating and/or driving the combine, read this Operator's Manual carefully, paying particular attention to the section on safety rules.

Always keep this manual on hand for further reference.

The terms "left" and "right" are always used with reference to the machine travelling direction.

Should you require further information about the machine, please do not hesitate to contact your authorised Dealer.

Your Dealer provides specially trained personnel, genuine quality spare parts and the required tools to solve any problems that may arise.

NOTE:

- *This combine has been designed and built in compliance with the Machine Directive 2006/42/EC. An EC Declaration of Conformity is supplied with the machine (see facsimile on page 1-8). The manufacturer disclaims all liability to any claim resulting from unauthorised modification or alteration.*
- *This manual is published for worldwide distribution, and the availability of equipment shown as standard or optional varies according to the territory in which the combine is to be used. Specifications may differ from those contained in this Operator's Manual according to the customer's requirements.*
- *In order to provide a better view of features or adjustments, certain illustrations in this manual may show an assembly with standard guards, or the guards required by law in different countries, open or removed. **However, a machine should never be operated in this condition. For your own safety, always ensure all safety guards are closed and correctly fitted before operating the machine.***
- *This Operator's Manual, along with the Operator's Manuals for the table and PTO shaft, must always be kept in the pocket provided on the right-hand side of the operator seat for convenient reference.*

Modifications and improvements

In accordance with the Company's policy of continuous improvements to its products, the Company reserves the right to modify and improve its products whenever necessary and to the required extent, without any obligation to apply such modifications to previously sold products.

1.2 APPROPRIATE USE

C series combines are designed as self-propelled units with a diesel engine.

The machines are manufactured exclusively for usual agricultural purposes, i.e. for harvesting cereal, seed, rice, maize, soya, etc. by cutting or picking-up the crop, threshing and separating the grains from the ears, delivering the grains in the grain tank and unloading them into the grain wagon.

When operating the machine, make sure the cab doors are shut. The operator and instructor, if present, must remain seated in their respective seats with their seatbelts fastened (the operator should not drive the machine when standing).

The machines may be operated only by skilled personnel, who are thoroughly familiar with all machine functions and their operation.

Machine stability is ensured on the following inclinations, on condition that the ground is firm and the tyres offer sufficient grip:

- 30% (18 °) longitudinally (uphill and downhill).
- 30% (18 °) crosswise.

5275 C and 6335 C models

The above combine models are designed for working on level ground to ensure even distribution of the crop inside the machine. **These models HAVE NOT been developed for working on sloping ground.**

5275 C PL and 6335 C PL models

These models have been expressly designed for harvesting crops on hilly but firm ground. The front levelling system ensures that the machine body remains perfectly horizontal up to a gradient of 20%. The system that varies the front track width operates correctly only when the machine is in motion.

TABLE TYPES (please see the specific Operator's Manual)

The above-mentioned combines may use 4.80, 5.40, 6.00, 7.00 or 7.60 m cutting tables.

NOTE: In this manual, the term "table/s" signifies both the cutting table and the maize header when used generically. The term "cutting table" refers to the assembly consisting of reel, cutting bar, table auger, etc. used to harvest cereal, rice, soya, etc. The term "maize header" refers to the equipment formed by stalk grippers, stripping blades, conveyor chains, etc. used for maize harvesting.

1.3 COMBINE IDENTIFICATION

The combine and its main components are identified by serial numbers and/or production codes.

The position of the different identification data is described below.

NOTE: Always quote the combine serial number when contacting your Dealer for spare parts or assistance.

Combine approval and safety plates

Fig. 1 – Fig. 3

The manufacturer's type plate (1), statutory for all countries (or 2, for France only), is positioned on the outer right-hand side of the operator platform and shows the following information:

- Combine type.
- Approval number.
- Combine serial number.
- Weight (on both axes).
- Towing weight.

For further details, please refer to the type approval certificate.

The safety plate (3) is located next to the approval plate, and guarantees that the combine was built in compliance with Machinery Directive 2006/42/EC as well as Directive 2004/108/EC.

This plate shows the following information:

- Manufacturing year.
- Model.
- Combine serial number.
- Crop type.
- Total weight (normal configuration).
- Maximum towing weight.
- Maximum vertical load on the trailer hitch.

In certain countries (e.g. Russia) these two plates are positioned next to an additional decal/plate corresponding to the approval for that specific country.

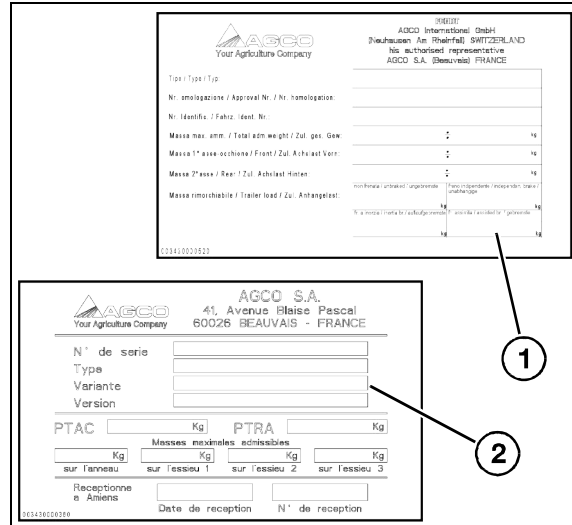


Fig. 1

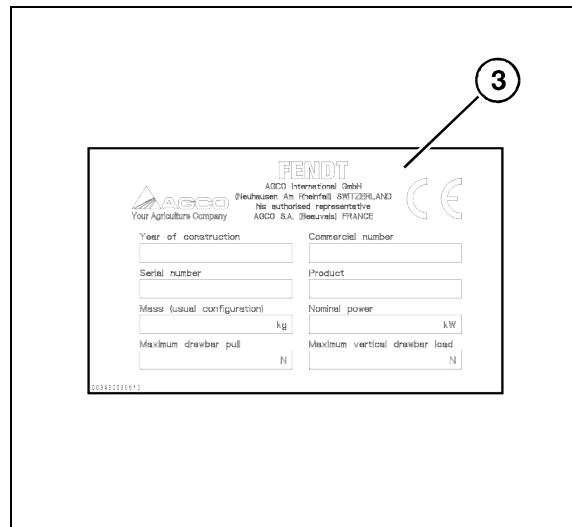


Fig. 2

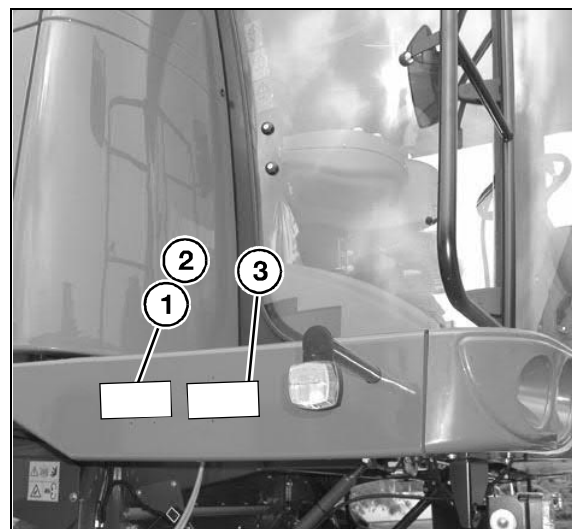


Fig. 3

Combine identification

Fig. 4

Combine type and serial number appear on the plate and are also punched into the rear right-hand side of the frame (1).

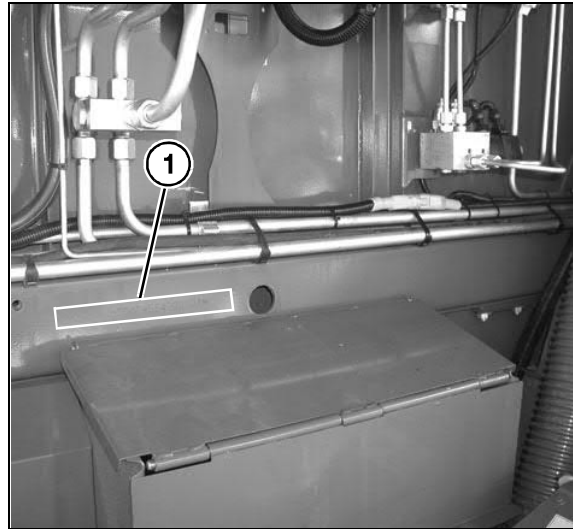


Fig. 4

Engine Identification

Fig. 5

The engine is identified by the type plate (1) in the middle of the cylinder block.

The following information appears on the plate (1):

- Engine manufacturer
- Engine type
- Engine power and rated speed
- Engine serial number
- Valve clearance
- Customer reference code
- Idling speed
- Compliance with Directive 97/68/EC
- Name of the engine assembler.

The engine serial number is always also stamped on the cylinder block.

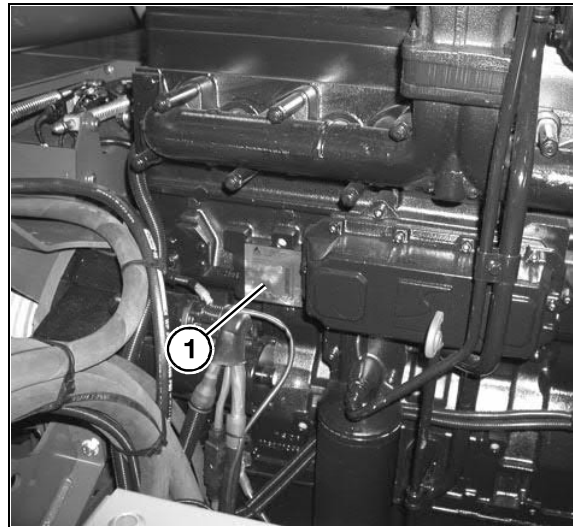


Fig. 5

Cutting table identification

Fig. 6

The cutting table is identified by a metal plate positioned on the left-hand side of the table body above the drive shaft, or on the left-hand side.

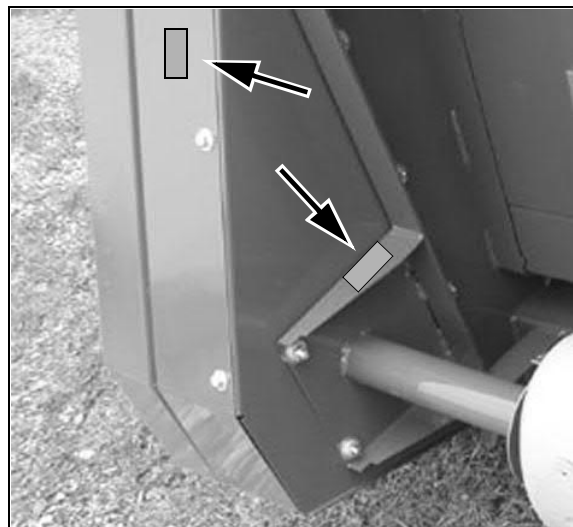


Fig. 6

GENERAL INFORMATION

Cab identification

Fig. 7

The type plate is located on the outside of the cab, in the bottom left-hand corner.

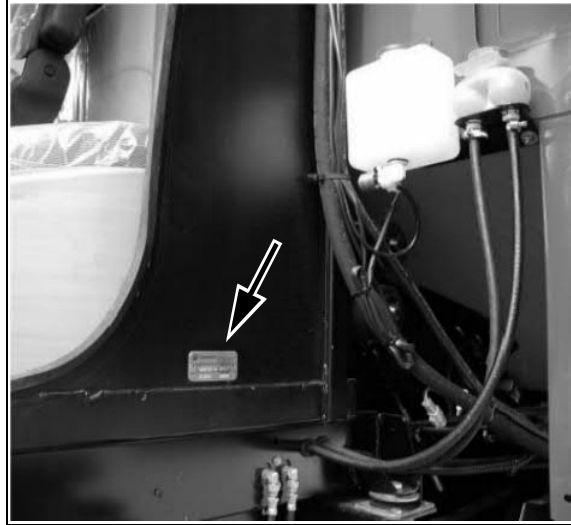


Fig. 7

Hydrostatic pump identification

Fig. 8

Identification of the hydrostatic pump is facilitated by means of a plate located on the pump body front part.

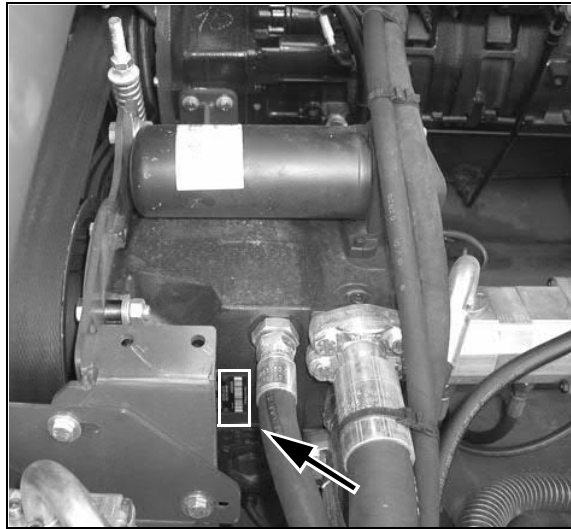


Fig. 8

Hydrostatic motor identification

Fig. 9

Identification of the hydrostatic motor is facilitated by means of a plate located on the motor body lower part.

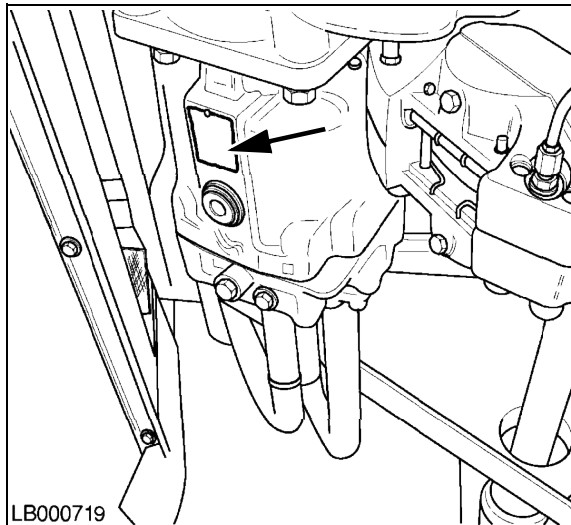


Fig. 9

Straw chopper identification (if fitted)

Fig. 10

The straw chopper type plate is located on the right-hand side next to the rotor support.

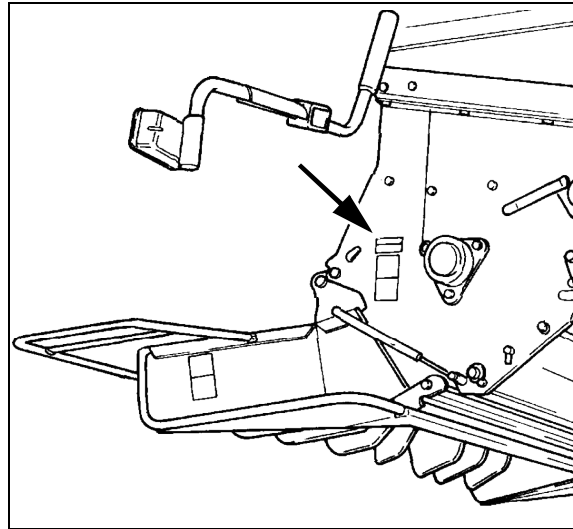


Fig. 10

Chaff spreader identification (if fitted)

Fig. 11

The type plate is located on the right-hand side next to the chaff spreader adjustment lever.

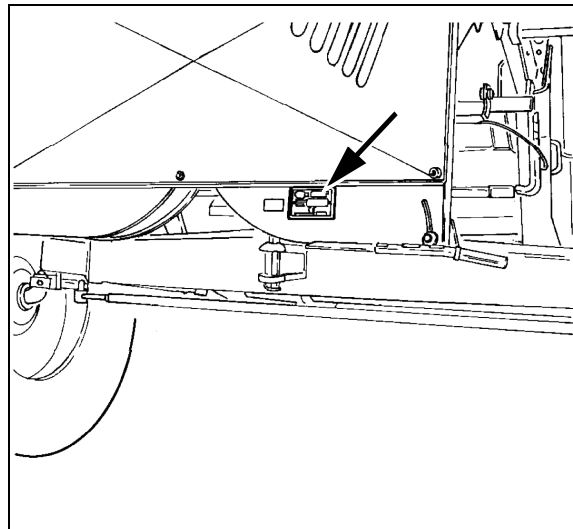


Fig. 11

Trailer hitch identification (if fitted)

Fig. 12

The plate is positioned on the right-hand side of the trailer hitch.

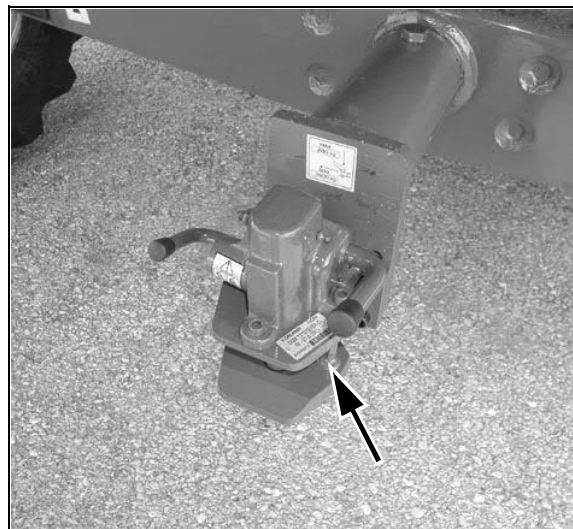


Fig. 12

GENERAL INFORMATION

Please enter the identification details of your combine for convenient reference:

Combine model
Combine serial number
Engine type and serial number
Cab serial number
Straw chopper serial number
Cutting table serial number
Date of initial startup
Dealer's telephone number

EC DECLARATION OF CONFORMITY

The EC Declaration of Conformity, the front and reverse sides of which are shown below, certifies that the combine was designed and built in compliance with the regulations currently applicable within the European Community.

The cutting table has its own EC Declaration of Conformity.


 AGCO International GmbH Victor von Bruns-Strasse 17 8212 Neuhausen am Rheinfall Switzerland AGCO S.A. 41, avenue Blaise Pascal 60026 Beauvais Cedex France	IT DICHIARAZIONE DI CONFORMITÀ CE IN MATERIA DI DIRETTIVE DUEMIGLIAIA/OTTO DUEMIGLIAIA/OTTO/OTTO	FR DECLARATION DE CONFORMITÉ CE EN MATIÈRE DE DIRECTIVES DUEMIGLIAIA/OTTO DUEMIGLIAIA/OTTO/OTTO	DA EY-OPBYRDEKLARATION EY-OPBYRDEKLARATION EY-OPBYRDEKLARATION	PT DECLARAÇÃO DE CONFORMIDADE EM MATÉRIA DE DIRETIVAS DUEMIGLIAIA/OTTO DUEMIGLIAIA/OTTO/OTTO	BG ДЪКЛАРАЦИЯ ЗА СЪОТВЕТНОСТ ПО ОТНОСИТЕЛНО ПОТРЕБИТЕЛСКИ ПРОДУКТИ	CS PROHLÁŠENÍ O SHODĚ S DVOU MĚŘÍTELI DVOU MĚŘÍTELI DVOU MĚŘÍTELI	SL IZJAVILA O SKLADNOSTI S PRAVILNOSTI S PRAVILNOSTI	NO ERKLÄRUNG ÜBER DIE ÜBEREINSTIMMUNG MIT DEN VERBODENEN MIT DEN VERBODENEN	
	DE ERKLÄRUNG ÜBER DIE ÜBEREINSTIMMUNG MIT DEN VERBODENEN MIT DEN VERBODENEN	EN DECLARATION OF CONFORMITY IN RELATION TO DIRECTIVES DUEMIGLIAIA/OTTO DUEMIGLIAIA/OTTO/OTTO	ES DECLARACION DE CONFORMIDAD EN MATERIA DE DIRECTIVAS DUEMIGLIAIA/OTTO DUEMIGLIAIA/OTTO/OTTO	HU A NYELVI NYILATÁS AZ EGYETLEN NYELVI NYILATÁS AZ EGYETLEN NYELVI NYILATÁS AZ EGYETLEN	IT DICHIAZIONE DI CONFORMITÀ IN MATERIA DI DIRETTIVE DUEMIGLIAIA/OTTO DUEMIGLIAIA/OTTO/OTTO	IV DOKUMENTASIAI DOKUMENTASIAI DOKUMENTASIAI	SV ERKLÄRNING ERKLÄRNING ERKLÄRNING	EL ΕΓΧΩΡΙΟ ΔΕΛΤΙΟ ΕΓΧΩΡΙΟ ΔΕΛΤΙΟ ΕΓΧΩΡΙΟ ΔΕΛΤΙΟ	
	3 DECLARATION OF CONFORMITY IN RELATION TO DIRECTIVES DUEMIGLIAIA/OTTO DUEMIGLIAIA/OTTO/OTTO	4 DECLARATION OF CONFORMITY IN RELATION TO DIRECTIVES DUEMIGLIAIA/OTTO DUEMIGLIAIA/OTTO/OTTO	5 DECLARATION OF CONFORMITY IN RELATION TO DIRECTIVES DUEMIGLIAIA/OTTO DUEMIGLIAIA/OTTO/OTTO	6 DECLARATION OF CONFORMITY IN RELATION TO DIRECTIVES DUEMIGLIAIA/OTTO DUEMIGLIAIA/OTTO/OTTO	7 DECLARATION OF CONFORMITY IN RELATION TO DIRECTIVES DUEMIGLIAIA/OTTO DUEMIGLIAIA/OTTO/OTTO	8 DECLARATION OF CONFORMITY IN RELATION TO DIRECTIVES DUEMIGLIAIA/OTTO DUEMIGLIAIA/OTTO/OTTO	9 DECLARATION OF CONFORMITY IN RELATION TO DIRECTIVES DUEMIGLIAIA/OTTO DUEMIGLIAIA/OTTO/OTTO	10 DECLARATION OF CONFORMITY IN RELATION TO DIRECTIVES DUEMIGLIAIA/OTTO DUEMIGLIAIA/OTTO/OTTO	11 DECLARATION OF CONFORMITY IN RELATION TO DIRECTIVES DUEMIGLIAIA/OTTO DUEMIGLIAIA/OTTO/OTTO
	12 DECLARATION OF CONFORMITY IN RELATION TO DIRECTIVES DUEMIGLIAIA/OTTO DUEMIGLIAIA/OTTO/OTTO	13 DECLARATION OF CONFORMITY IN RELATION TO DIRECTIVES DUEMIGLIAIA/OTTO DUEMIGLIAIA/OTTO/OTTO	14 DECLARATION OF CONFORMITY IN RELATION TO DIRECTIVES DUEMIGLIAIA/OTTO DUEMIGLIAIA/OTTO/OTTO	15 DECLARATION OF CONFORMITY IN RELATION TO DIRECTIVES DUEMIGLIAIA/OTTO DUEMIGLIAIA/OTTO/OTTO	16 DECLARATION OF CONFORMITY IN RELATION TO DIRECTIVES DUEMIGLIAIA/OTTO DUEMIGLIAIA/OTTO/OTTO	17 DECLARATION OF CONFORMITY IN RELATION TO DIRECTIVES DUEMIGLIAIA/OTTO DUEMIGLIAIA/OTTO/OTTO	18 DECLARATION OF CONFORMITY IN RELATION TO DIRECTIVES DUEMIGLIAIA/OTTO DUEMIGLIAIA/OTTO/OTTO	19 DECLARATION OF CONFORMITY IN RELATION TO DIRECTIVES DUEMIGLIAIA/OTTO DUEMIGLIAIA/OTTO/OTTO	20 DECLARATION OF CONFORMITY IN RELATION TO DIRECTIVES DUEMIGLIAIA/OTTO DUEMIGLIAIA/OTTO/OTTO

Fig. 13

Thank you so much for reading.
Please click the “Buy Now!”
button below to download the
complete manual.



After you pay.

You can download the most
perfect and complete manual in
the world immediately.

Our support email:

ebooklibonline@outlook.com