

***5275 C*** from serial no. 553900084

***5275 C PL*** from serial no. 554000162

***5275 C PLI*** from serial no. 554000162

***6335 C*** from serial no. 564000301

***6335 C PL*** from serial no. 564100215

**ORIGINAL  
OPERATOR'S  
MANUAL**

**FENDT**

# **TABLE OF CONTENTS**

- 1. General Information**
- 2. Operation**
- 3. Controls and Instruments**
- 4. Field Operations**
- 5. Lubrication and Maintenance**
- 6. Adjustments**
- 7. Systems**
- 8. Troubleshooting**
- 9. Off-Season Storage**
- 10. Optional Equipment**
- 11. Technical Specifications**
- 12. Alphabetical Index**

# CONTENTS

|                                                                              | Section-page |
|------------------------------------------------------------------------------|--------------|
| <b>1. GENERAL INFORMATION</b>                                                |              |
| Customer information . . . . .                                               | 1-1          |
| Appropriate use . . . . .                                                    | 1-3          |
| Combine identification . . . . .                                             | 1-4          |
| Ecology: information for the prevention of environmental pollution . . . . . | 1-9          |
| Safety . . . . .                                                             | 1-10         |
| Emergency exit . . . . .                                                     | 1-34         |
| Safety devices . . . . .                                                     | 1-35         |
| Machine lifting . . . . .                                                    | 1-45         |
| Towing the combine . . . . .                                                 | 1-46         |
| Fire resistance inside the cab . . . . .                                     | 1-46         |
| Noise level in the cab . . . . .                                             | 1-47         |
| Ambient noise in motion Directive 2009/63/EC . . . . .                       | 1-47         |
| Vibrations in the cab . . . . .                                              | 1-47         |
| Statutory regulations . . . . .                                              | 1-48         |
| Hydraulic systems: hoses . . . . .                                           | 1-48         |
| Scrapping and disposal . . . . .                                             | 1-49         |
| Electromagnetic emissions . . . . .                                          | 1-49         |
| Notes for road transport . . . . .                                           | 1-50         |
| Weight distribution . . . . .                                                | 1-52         |
| <b>2. OPERATION</b>                                                          |              |
| Crop processing . . . . .                                                    | 2-1          |
| <b>3. CONTROLS AND INSTRUMENTS</b>                                           |              |
| Steering column . . . . .                                                    | 3-1          |
| Service and parking brakes . . . . .                                         | 3-3          |
| Multifunction lever . . . . .                                                | 3-4          |
| Gearshift lever and reversing lever . . . . .                                | 3-6          |
| Control panel (models 5275 C and 6335 C) . . . . .                           | 3-7          |
| Control panel (models 5275 C PL and 6335 C PL) . . . . .                     | 3-8          |
| Control panel (5275 C PLI model) . . . . .                                   | 3-9          |
| Computer . . . . .                                                           | 3-14         |
| Cab . . . . .                                                                | 3-42         |
| Access to combine components . . . . .                                       | 3-53         |
| Starting the engine . . . . .                                                | 3-57         |
| Stopping the engine . . . . .                                                | 3-58         |
| Operations to be carried out before road transport . . . . .                 | 3-59         |
| Before using the combine . . . . .                                           | 3-61         |
| <b>4. FIELD OPERATIONS</b>                                                   |              |
| General Information . . . . .                                                | 4-1          |
| Starting and Stopping the Combine . . . . .                                  | 4-2          |
| Cutting table . . . . .                                                      | 4-4          |
| Main Crop Elevator . . . . .                                                 | 4-9          |
| Cylinder Housing . . . . .                                                   | 4-13         |
| Concave . . . . .                                                            | 4-14         |
| Rear beater . . . . .                                                        | 4-19         |
| Multi Crop Separator . . . . .                                               | 4-20         |
| Straw walkers . . . . .                                                      | 4-23         |
| Main Grain Pan . . . . .                                                     | 4-24         |
| Fanning mill . . . . .                                                       | 4-27         |
| Top sieve . . . . .                                                          | 4-28         |
| Bottom sieve . . . . .                                                       | 4-29         |
| Returns . . . . .                                                            | 4-30         |
| Grain tank . . . . .                                                         | 4-31         |

# CONTENTS

|                                                                          | Section-page |
|--------------------------------------------------------------------------|--------------|
| <b>5. LUBRICATION AND MAINTENANCE</b>                                    |              |
| General information . . . . .                                            | 5-1          |
| Preliminary Service Inspection . . . . .                                 | 5-2          |
| Scheduled Service Inspection . . . . .                                   | 5-3          |
| Where and When to Carry Out Service Inspection . . . . .                 | 5-4          |
| Periodical maintenance operations . . . . .                              | 5-39         |
| Capacities and specifications 5275 C, 5275 C PL AND 5275 C PLI . . . . . | 5-42         |
| Capacities and specifications 6335 C and 6335 C PL . . . . .             | 5-43         |
| <b>6. ADJUSTMENTS</b>                                                    |              |
| Belt and chain adjustment . . . . .                                      | 6-1          |
| Belts and chains (left-hand side) . . . . .                              | 6-2          |
| Belts and chains (right-hand side) . . . . .                             | 6-11         |
| Reverse drive system . . . . .                                           | 6-17         |
| Slip clutches . . . . .                                                  | 6-19         |
| Unloading tube . . . . .                                                 | 6-20         |
| Tyres . . . . .                                                          | 6-21         |
| Brakes . . . . .                                                         | 6-25         |
| Rear axle . . . . .                                                      | 6-27         |
| Battery . . . . .                                                        | 6-31         |
| <b>7. SYSTEMS</b>                                                        |              |
| Engine supply system . . . . .                                           | 7-2          |
| Engine air intake and exhaust system . . . . .                           | 7-5          |
| Engine cooling system . . . . .                                          | 7-6          |
| Engine lubrication system . . . . .                                      | 7-8          |
| SCR system . . . . .                                                     | 7-9          |
| Hydraulics system . . . . .                                              | 7-11         |
| Hydrostatic transmission system . . . . .                                | 7-21         |
| Electrical system . . . . .                                              | 7-23         |
| <b>8. TROUBLESHOOTING</b>                                                |              |
| Feeding . . . . .                                                        | 8-1          |
| Threshing . . . . .                                                      | 8-1          |
| Separation and cleaning . . . . .                                        | 8-3          |
| Hydrostatic Transmission . . . . .                                       | 8-5          |
| Engine . . . . .                                                         | 8-6          |
| Hydraulics system . . . . .                                              | 8-16         |
| Levelling Hydraulics System . . . . .                                    | 8-16         |
| Electrical System . . . . .                                              | 8-17         |
| Air conditioning circuit . . . . .                                       | 8-17         |
| Straw Chopper . . . . .                                                  | 8-19         |
| <b>9. OFF-SEASON</b>                                                     |              |
| <b>9. STORAGE</b>                                                        |              |
| <b>10. OPTIONAL EQUIPMENT</b>                                            |              |
| <b>11. TECHNICAL SPECIFICATIONS</b>                                      |              |
| Wheels and tyres . . . . .                                               | 11-1         |
| Combine dimensions . . . . .                                             | 11-4         |
| Clearance between unloading auger and table . . . . .                    | 11-11        |
| Technical specifications - 5275 C and 6335 C . . . . .                   | 11-12        |
| Technical specifications - 5275 C PL, 5275 C PLI and 6335 C PL . . . . . | 11-19        |
| <b>12. ALPHABETICAL INDEX</b>                                            |              |

# 1. GENERAL INFORMATION

## 1.1 CUSTOMER INFORMATION

### INTRODUCTION

Your new self-propelled combine is manufactured for harvesting seed and cereal crops, for threshing, separating, cleaning and conveying the grain into the tank and depositing the straw on the ground.

This Operator's Manual should be used as a practical reference guide: It contains all the necessary practical information for the operation, adjustment and maintenance of your new machine.

Your combine was designed and built to ensure optimum performance, comfort and ease-of-operation in a wide variety of crops and conditions.

The combine has been thoroughly inspected prior to delivery both at the factory and by your Dealer, to ensure you receive it in perfect condition.

To keep the combine in perfect condition and to ensure trouble-free performance, the periodical maintenance operations listed in this manual should be carried out at the recommended intervals.

**Before operating and/or driving the combine, read this Operator's Manual carefully, paying particular attention to the section on safety rules.**

**Always keep this manual on hand for further reference.**

The terms "left" and "right" are always used with reference to the machine travelling direction.

Should you require further information about the machine, please do not hesitate to contact your authorised Dealer.

Your Dealer provides specially trained personnel, genuine quality spare parts and the required tools to solve any problems that may arise.

### NOTE:

- *This combine has been designed and built in compliance with the Machine Directive 2006/42/EC. An EC Declaration of Conformity is supplied with the machine (see facsimile on page 1-8).*
- *This manual is published for worldwide distribution, and the availability of equipment shown as standard or optional varies according to the territory in which the combine is to be used. Specifications may differ from those contained in this Operator's Manual according to the customer's requirements.*
- *In order to provide a better view of features or adjustments, certain illustrations in this manual may show an assembly with standard guards, or the guards required by law in different countries, open or removed. **However, a machine should never be operated in this condition. For your own safety, always ensure all safety guards are closed and correctly fitted before operating the machine.***
- *This Operator's Manual, along with the the PTO shaft, must always be kept in the empty compartment under the passenger seat for storage and convenient reference.*

### Company policy

In accordance with the Company's policy of continuous improvements to its products, the Company reserves the right to modify and improve its products whenever necessary and to the required extent, without any obligation to apply such modifications to previously sold products. The information contained in this Manual refers to the current situation at the time it was written. All the data given may vary.

## **1.2 APPROPRIATE USE**

C series combines are designed as self-propelled units with a diesel engine.

The machines are manufactured exclusively for usual agricultural purposes, i.e. for harvesting cereal, seed, rice, maize, soya, etc. by cutting or picking-up the crop, threshing and separating the grains from the ears, delivering the grains in the grain tank and unloading them into the grain wagon.

Machine performance may be limited by various factors such as harvesting speed, weather conditions, ground characteristics and the type and degree of ripeness of the crop.

When operating the machine, make sure the cab doors are shut. The operator and instructor, if present, must remain seated in their respective seats with their seatbelts fastened (the operator should not drive the machine when standing).

The machines may be operated only by skilled personnel, who are thoroughly familiar with all the machine's functions and harvesting techniques.

Machine stability is ensured on the following inclinations, on condition that the ground is firm and the tyres offer sufficient grip:

- 30% (18 °) longitudinally (uphill and downhill).
- 30% (18 °) crosswise.

### **Forbidden uses**

Do not use the machine for tasks or purposes other than those specified in this Manual, on the safety decals or on other safety information provided with the machine. The following pages contain recommendations on correct and incorrect use of the machine when travelling on public roads, during field operations and maintenance.

Many machine functions related to safety are managed by the software.

Do not try to modify or replace the software. You risk damaging the settings and the operating logic of the machine.

Such tampering could lead to unpredictable and abnormal behaviour, making it unsafe for the operator(s) and the machine.

Only your Dealer is authorised to intervene on the machine software.

The machine's maximum speed on the road is limited and controlled by the software. Do not try to change it.

### **5275 C and 6335 C models**

The above combine models are designed for working on level ground to ensure even distribution of the crop inside the machine. **These models HAVE NOT been developed for working on sloping ground.**

### **5275 C PL and 6335 C PL models**

These models have been expressly designed for harvesting crops on hilly but firm ground.

The front levelling system ensures that the machine body remains perfectly horizontal up to a gradient of 20%.

The system that varies the front track width operates correctly only when the machine is in motion.

### **5275 C PLI model**

This model, in comparison to the LC models, features the longitudinal levelling function (two hydraulic cylinders connected to the rear axle).

When being driven uphill, the machine body remains perfectly horizontal up to a gradient of 30%.

### **TABLE TYPES (please see the specific Operator's Manual)**

The above-mentioned combines may use 4.80, 5.40, 6.00, 7.00 or 7.60 m cutting tables.

**NOTE:** In this manual, the term "table/s" signifies both the cutting table and the maize header when used generically. The term "cutting table" refers to the assembly consisting of reel, cutting bar, table auger, etc. used to harvest cereal, rice, soya, etc. The term "maize header" refers to the equipment formed by stalk grippers, stripping blades, conveyor chains, etc. used for maize harvesting.

## 1.3 COMBINE IDENTIFICATION

The combine and its main components are identified by serial numbers and/or production codes.

The position of the different identification data is described below.

**NOTE:** Always quote the combine serial number when contacting your Dealer for spare parts or assistance.

### Combine approval and safety plates

Fig. 1 – Fig. 3

The manufacturer's type plate, statutory for all countries (1), or (2) for France only, is positioned on the outer right-hand side of the operator platform and shows the following information:

- Combine type.
- Approval number.
- Combine serial number.
- Total maximum permitted weight.
- Weight (on both axles).
- Towing weight.

For further details, please refer to the type approval certificate.

The safety plate (3) is located next to the approval plate, and guarantees that the combine was built in compliance with Machinery Directive 2006/42/EC as well as Directive 2004/108/EC.

This plate shows the following information:

- Manufacturing year.
- Year of use.
- Model.
- Combine serial number.
- Crop type.
- Total weight (normal configuration).
- Nominal engine power.
- Maximum towing weight.
- Maximum vertical load on the trailer hitch.

In certain countries (e.g. Russia) these two plates are positioned next to an additional decal/plate corresponding to the approval for that specific country.



Fig. 1

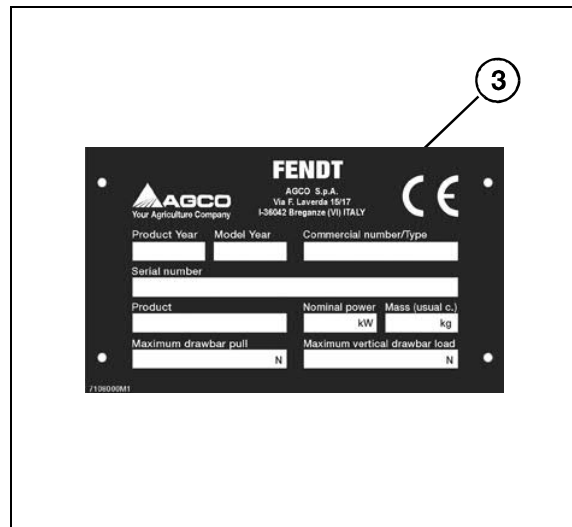


Fig. 2

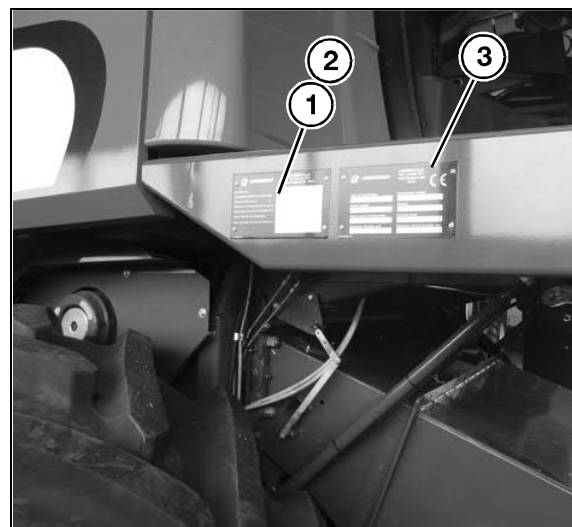


Fig. 3

**Combine identification**

Fig. 4

Combine type and serial number appear on the plate and are also punched into the rear right-hand side of the frame (1).

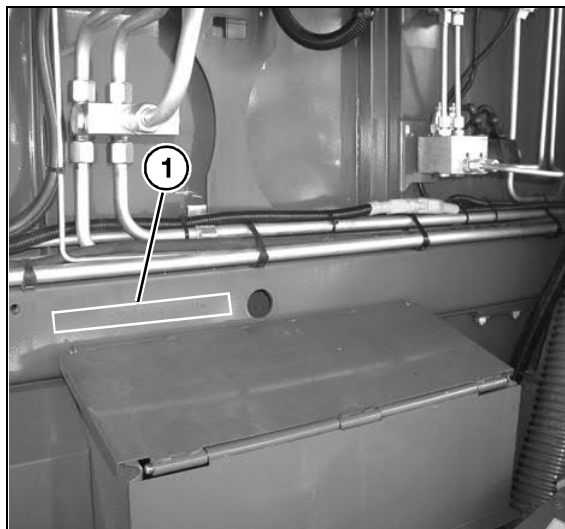


Fig. 4

**Engine Identification**

Fig. 5

The engine is identified by the type plate (1) in the middle of the cylinder block.

The following information appears on the plate (1):

- Engine manufacturer
- Engine type
- Engine power and rated speed
- Engine serial number
- Valve clearance
- Customer reference code
- Idling speed
- Compliance with Directive 97/68/EC
- Name of the engine assembler.

The engine serial number is always also stamped on the cylinder block.



Fig. 5

**Cutting table identification**

Fig. 6

The cutting table can be identified by a metal plate affixed on the left-hand side.

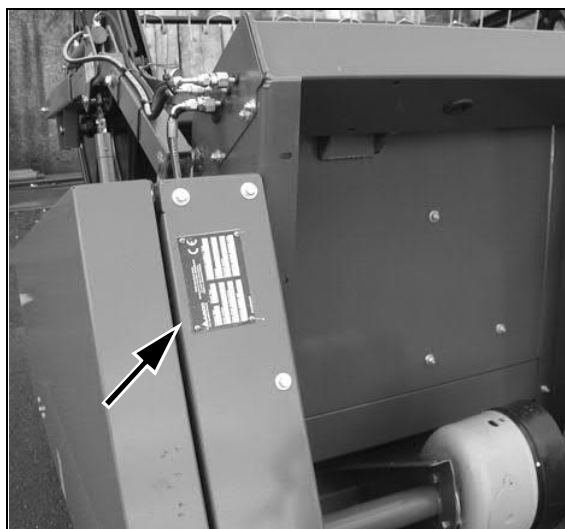


Fig. 6



## **GENERAL INFORMATION**

### **Operator seat identification**

Fig. 7

The identification plate is located on the seat support and can be reached by moving the seat fully forwards.



Fig. 7

### **Hydrostatic pump identification**

Fig. 8

Identification of the hydrostatic pump is facilitated by means of a plate located on the pump body front part.

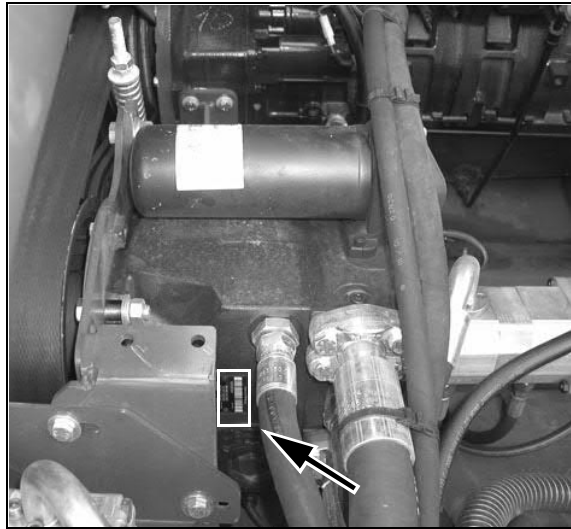
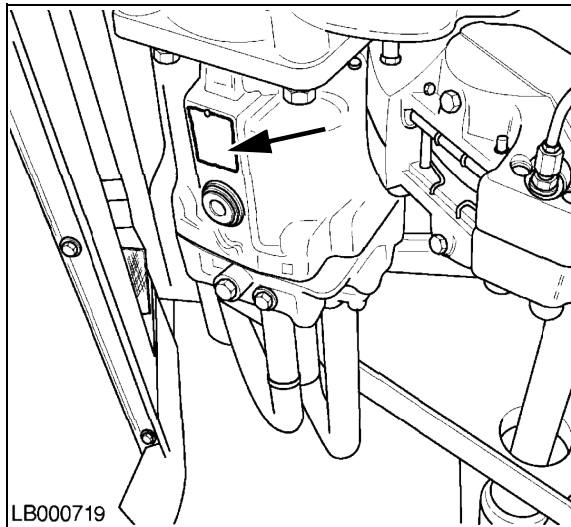


Fig. 8

### **Hydrostatic motor identification**

Fig. 9

Identification of the hydrostatic motor is facilitated by means of a plate located on the motor body lower part.



LB000719

Fig. 9

**Straw chopper identification (if fitted)**

Fig. 10

The straw chopper type plate is located on the right-hand side next to the rotor support.

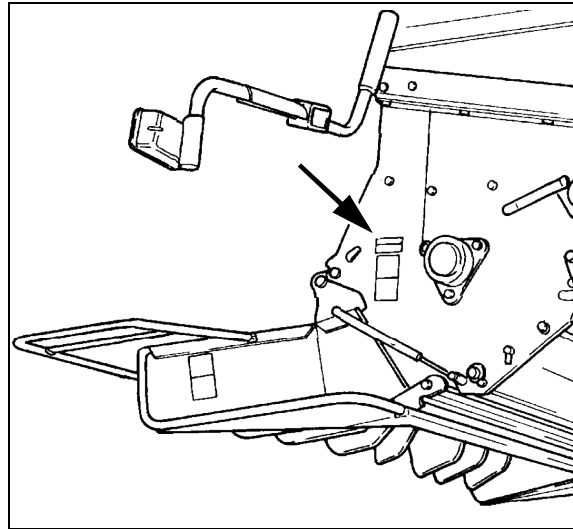


Fig. 10

**Chaff spreader identification (if fitted)**

Fig. 11

The type plate is located on the right-hand side next to the chaff spreader adjustment lever.

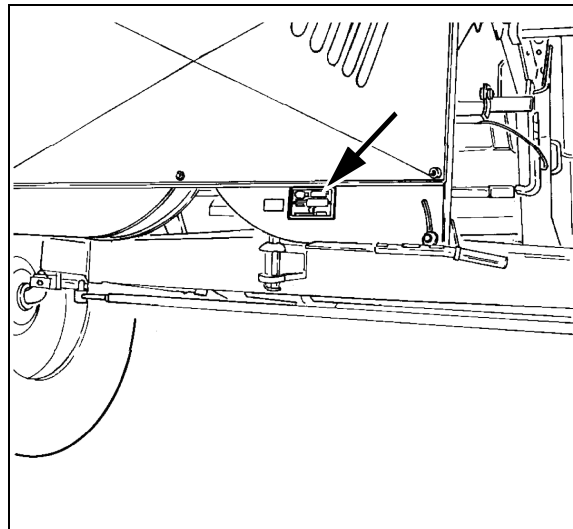


Fig. 11

**Trailer hitch identification (if fitted)**

Fig. 12

The plate is positioned on the right-hand side of the trailer hitch.

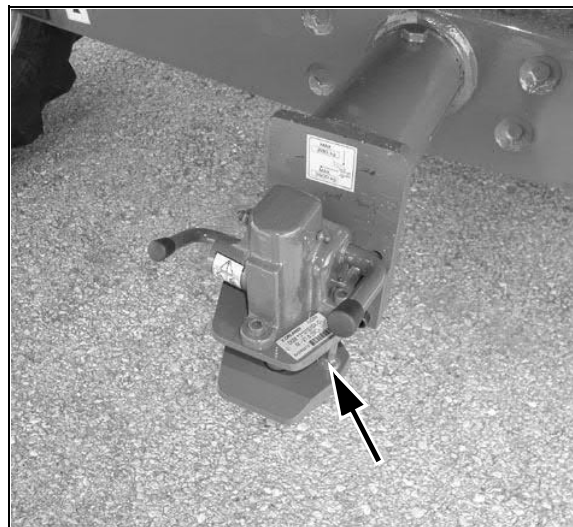


Fig. 12

# GENERAL INFORMATION

Please enter the identification details of your combine for convenient reference:

- Combine model .....
- Combine serial number .....
- Engine type and serial number .....
- Cab serial number .....
- Straw chopper serial number .....
- Cutting table serial number .....
- Date of initial start-up .....
- Dealer's telephone number .....

## EC DECLARATION OF CONFORMITY

The EC Declaration of Conformity, the front and reverse sides of which are shown below, certifies that **the combine was designed and built in compliance with the regulations currently applicable within the European Community.**

The cutting table has its own EC Declaration of Conformity.


|                                                                                                                                                                        |                                                                                                                                                                                                                                                                                                                                                                                                                                                                                                                                                                                                                                                                  |                                                                                                                                                                                                                                                                                                                                                                                                                                                                                                                                                                                                                                                                                |                                                                                                                                                                                                                                                                                                                                                                                                                                                                                                                                                                                                                                                                                                                       |
|------------------------------------------------------------------------------------------------------------------------------------------------------------------------|------------------------------------------------------------------------------------------------------------------------------------------------------------------------------------------------------------------------------------------------------------------------------------------------------------------------------------------------------------------------------------------------------------------------------------------------------------------------------------------------------------------------------------------------------------------------------------------------------------------------------------------------------------------|--------------------------------------------------------------------------------------------------------------------------------------------------------------------------------------------------------------------------------------------------------------------------------------------------------------------------------------------------------------------------------------------------------------------------------------------------------------------------------------------------------------------------------------------------------------------------------------------------------------------------------------------------------------------------------|-----------------------------------------------------------------------------------------------------------------------------------------------------------------------------------------------------------------------------------------------------------------------------------------------------------------------------------------------------------------------------------------------------------------------------------------------------------------------------------------------------------------------------------------------------------------------------------------------------------------------------------------------------------------------------------------------------------------------|
|  <p><b>AGCO S.p.A.</b><br/>Via F. Laverda 15/17<br/>36042 Breganze (VI)<br/>Italy</p> | <p><b>IT</b><br/>DICHIARAZIONE DI CONFORMITÀ CE<br/>IN CONFORMITÀ ALLE DIRETTIVE<br/>2006/42/CE E 2004/108/CE</p> <p>CATEGORIA: 1</p> <p>E IL SUO RAPPRESENTANTE AUTORIZZATO: 2</p> <p>DICHIARA SOTTO LA PROPRIA RESPONSABILITÀ CHE IL MEZZO<br/>AGRICOLA CON LA FUNZIONE DI:<br/>MOTOCOLLETTORIBAGNOLINO</p> <p>MODELLO: 3</p> <p>NUMERO COMMERCIALE: 4</p> <p>NUMERO DI SERIE: 5</p> <p>L'OGGETTO DELLA PRESENTE DICHIARAZIONE È CONFORME ALLE<br/>DISPOSIZIONI DELLA DIRETTIVA<br/>2006/42/CE, MODIFICATA IN: 6</p> <p>E DELLA DIRETTIVA 2004/108/CE<br/>MODIFICATA IN: 7</p> <p>NUMERO, RUOLO E FIRMA DELLA PERSONA AUTORIZZATA: 8</p> <p>SEDE E DATA: 9</p> | <p><b>FR</b><br/>DECLARATION DE CONFORMITE CE<br/>SELON LES DIRECTIVES 2006/42/CE<br/>E 2004/108/CE</p> <p>MODÈLE: 1</p> <p>ET MONRE MANDATAIRE: 2</p> <p>DECLARE SOUS MONRE SEULE RESPONSABILITE QUE LA<br/>MACHINE AGRICOLE AVEC POUR FONCTION:<br/>MOTOCYCLISTE-MOTEUR</p> <p>MODELE: 3</p> <p>NON COMMERCIAL: 4</p> <p>N° DE SERIE: 5</p> <p>OBJET DE LA DECLARATION EST CONFORME AUX<br/>DISPOSITIONS DE LA DIRECTIVE 2006/42/CE,<br/>AMENDEE PAR: 6</p> <p>AINSI QU'AVEZ PRESCRIPTIONS DE LA<br/>DIRECTIVE 2004/108/CE<br/>AMENDEE PAR: 7</p> <p>NON FONCTION ET SIGNATURE DE LA<br/>PERSONNE AUTORISEE: 8</p> <p>LIEU ET DATE: 9</p>                                    | <p><b>DA</b><br/>EF-ØVERENSSTEMMELSEERKLÆRING<br/>I OVERENSSTEMMELSE MED DIREKTIV<br/>2006/42/EF OG 2004/108/EF</p> <p>W: 1</p> <p>OG VORES AUTORSEREDE REPRÆSENTANT: 2</p> <p>ERKLÆRER UNDER EGET ANSVAR, AT LANDBRUGSMASKINEN<br/>MED FUNKTION AF:<br/>MOTOCYCLISTE</p> <p>MODEL: 3</p> <p>FIRMANAVN: 4</p> <p>SERIE-NUMMER: 5</p> <p>DEER ER OBJEKTET AF ERKLÆRINGEN, ER ERKLÆRET I<br/>ØVERENSSTEMMELSE MED BESTEMMELSENE I DIREKTIV<br/>2006/42/EF,<br/>ÅNDERET VED: 6</p> <p>SÅMÁT BESTEMMELSENE I DIREKTIV<br/>2004/108/EF ÅNDERET VED: 7</p> <p>UNDERSKRIFTSRETTIGHEDSDELS NAVN,<br/>TITEL OG UNDERSKRIFT: 8</p> <p>STED OG DATO: 9</p>                                                                       |
|                                                                                                                                                                        | <p><b>DE</b><br/>EG-KONFORMITÄTSERKLÄRUNG<br/>GEMÄSS DEN RIKTIGHETS<br/>2006/42/EG UND 2004/108/EG</p> <p>WER: 1</p> <p>UND UNSER BEVOLLMÄCHTIGTER: 2</p> <p>ERKLÄREN IN ALLENGER VERANTWORTUNG, DASS DAS<br/>LANDWIRTSCHAFTLICHE GERÄT MIT DER FUNKTION EINES:<br/>MOTOCYCLISTEN</p> <p>MODELL: 3</p> <p>HANDELSNAME: 4</p> <p>SERIENUMMER: 5</p> <p>DAS GEGENSTAND DIESER ERKLÄRUNG IST DEN BESTIMMUNGEN<br/>POLSKERER RIKTIGHETS GEMÄSS RICHTIGHEIT<br/>2006/42/EG, ERGÄNZT DURCH: 6</p> <p>SOWIE RICHTIGHEIT 2004/108/EG, ERGÄNZT DURCH: 7</p> <p>NAMN, FUNKTION UND UNTERSKRIFT DES<br/>BEVOLLMÄCHTIGTEN: 8</p> <p>ORT, DATUM: 9</p>                        | <p><b>EN</b><br/>EC DECLARATION OF CONFORMITY<br/>IN ACCORDANCE WITH DIRECTIVES<br/>2006/42/EC &amp; 2004/108/EC</p> <p>WE: 1</p> <p>AND OUR AUTHORISED REPRESENTATIVE: 2</p> <p>DECLARE UNDER OUR SOLE RESPONSIBILITY THAT THE<br/>AGRICULTURAL MACHINE WITH THE FUNCTION OF:<br/>COWHOLE HARVESTER</p> <p>MODEL: 3</p> <p>COMMERCIAL NAME: 4</p> <p>SERIAL NUMBER: 5</p> <p>THE SUBJECT OF THE DECLARATION IS IN<br/>CONFORMITY WITH THE PROVISIONS OF DIRECTIVE 2006/42/EC,<br/>AMENDED BY: 6</p> <p>AS WELL AS WITH THE PROVISIONS OF DIRECTIVE<br/>2004/108/EC, AMENDED BY: 7</p> <p>NAME, ROLE AND SIGNATURE OF THE AUTHORISED PERSON: 8</p> <p>LOCATION AND DATE: 9</p> | <p><b>ES</b><br/>DECLARACIÓN DE CONFORMIDAD CE<br/>DE ACUERDO CON LAS DIRECTIVAS<br/>2006/42/CE Y 2004/108/CE</p> <p>NUESTROS: 1</p> <p>Y NUESTRO REPRESENTANTE AUTORIZADO: 2</p> <p>DECLARAMOS BAJO NUESTRA ÚNICA RESPONSABILIDAD LA<br/>CONFORMIDAD DE LA MÁQUINA AGRÍCOLA CON LA FUNCIÓN DE:<br/>COWHOLE</p> <p>MODELO: 3</p> <p>NOMBRE COMERCIAL: 4</p> <p>NÚMERO DE SERIE: 5</p> <p>A LA QUE SE REFIERE ESTA DECLARACIÓN<br/>CON LAS DISPOSICIONES DE LA DIRECTIVA 2006/42/CE,<br/>MODIFICADA POR: 6</p> <p>ASÍ COMO LAS DISPOSICIONES DE LA DIRECTIVA 2004/108/CE,<br/>MODIFICADA POR: 7</p> <p>NOMBRE, CARGO Y FIRMA DE LA PERSONA AUTORIZADA: 8</p> <p>LUGAR Y FECHA: 9</p>                                   |
|                                                                                                                                                                        | <p><b>ET</b><br/>EÜ VASTAVISERLASKARATSIOON<br/>KÕRVALDAS DIREKTIVIDEGA<br/>2006/42/EÜ JA 2004/108/EÜ</p> <p>MEE: 1</p> <p>JA MEIE VOLIANDU EINDA: 2</p> <p>KÕRVALDAN ORAL TÄIEL VASTUVÕTSEL, ET JÄRGMINE<br/>PÕLLUPÕHJASIN:<br/>KOWHOLE</p> <p>MODEL: 3</p> <p>KÄIBANIME: 4</p> <p>SERIENUMBER: 5</p> <p>MIS ON KÄESOLEVA DEKLARATSIOONI OBJEKTIS, ON<br/>VASTAVUS DIREKTIVIGA 2006/42/EÜ, MIDA ON MUU-<br/>DETUD<br/>DIREKTIVIGA: 6</p> <p>NING DIREKTIVIGA 2004/108/EÜ, MIDA ON MUUDETUD<br/>DIREKTIVIGA: 7</p> <p>VOLIANDU ISIKU NIMEL, AMET JA ALLKIRI: 8</p> <p>ASUORIKT JA RÕÕPÄEV: 9</p>                                                                 | <p><b>FI</b><br/>EYÄ DIREKTIIVIN<br/>2006/42/EY JA 2004/108/EY<br/>VALMISTUSNIMENKÄSIVÖN VASTAVUUS</p> <p>ME: 1</p> <p>JA VALTUUTUTUJ EDUSTAJANMI: 2</p> <p>VAKUUTAMME TÄYSSÄ OMAALLA VASTUULLAMME, ETÄ<br/>MAATALOUSKONE, JOKA TOIMII<br/>LEIKKOPURKURINA</p> <p>MODEL: 3</p> <p>KÄIBÄNIMI: 4</p> <p>SARJANUMERO: 5</p> <p>JÄ JOKA MUODOSSA TÄNÄIN VAKUUTUKSEN KOHTEEN, ON<br/>DIREKTIIVIN 2006/42/EY JA SEN MUUTOSTEN: 6</p> <p>SEÄ DIREKTIIVIN 2004/108/EY JA SEN MUUTOSTEN: 7</p> <p>ENKÖLLEN NIMENKÄN<br/>VALTUUTETUN HENKÖN NIMI, TITELIÄ JA ALLEKIRJOITUS: 8</p> <p>PAIKKA JA PÄIVÄYS: 9</p>                                                                            | <p><b>NL</b><br/>EG-KONFORMITEITSVERKLARING<br/>OVEREENKOMSTIG DE RICHTLIJNEN<br/>2006/42/EG EN 2004/108/EG</p> <p>WIJ: 1</p> <p>EN ONZE BEVOEGDE VERTEGENWOORDEGER: 2</p> <p>VERKLAREN ONDER ONZE UITSPREKING VERANTWOORDELIJKHEID<br/>DAT DE LANDBRUGSMACHINE MET DE FUNCTIE VAN:<br/>MOTOCYCLISTE</p> <p>MODEL: 3</p> <p>HANDELSNAAM: 4</p> <p>SERIENUMMER: 5</p> <p>VALDOR DE VERKLARING AFGEGEVENDE HEFT DE<br/>OVEREENSTEMMING IS MET DE BEPALINGEN VAN DE RICHTLIJN<br/>2006/42/EG,<br/>ZONAS GEMODIGD DOOR: 6</p> <p>ALSAMDE MET DE BEPALINGEN VAN DE RICHTLIJN<br/>2004/108/EG, ZONAS GEMODIGD<br/>DOOR: 7</p> <p>NAAM, FUNCTIE EN HANDTEKENING VAN DE BEVOEGDE<br/>PERSOON: 8</p> <p>PLAATS EN DATUM: 9</p> |
|                                                                                                                                                                        | <p>Breganze, ..... 9</p>                                                                                                                                                                                                                                                                                                                                                                                                                                                                                                                                                                                                                                         | nr.....                                                                                                                                                                                                                                                                                                                                                                                                                                                                                                                                                                                                                                                                        | 635539007234                                                                                                                                                                                                                                                                                                                                                                                                                                                                                                                                                                                                                                                                                                          |

Fig. 13

Thank you so much for reading.  
Please click the “Buy Now!”  
button below to download the  
complete manual.



After you pay.

You can download the most  
perfect and complete manual in  
the world immediately.

Our support email:

[ebooklibonline@outlook.com](mailto:ebooklibonline@outlook.com)