

Product: EXCAVATOR

Model: 215B EXCAVATOR 2XC

Configuration: 215B EXCAVATOR 2XC00001-UP (MACHINE) POWERED BY 3204 ENGINE

Operation and Maintenance Manual 215B TRACK-TYPE EXCAVATOR

Media Number -SEBU5999-00

Publication Date -01/06/1984

Date Updated -11/10/2001

Foreword

SMCS - 7606

This publication is a reference for the new operator and a refresher for the experienced one. Read - study - and keep it handy.

Illustrations guide the operator through the correct procedures of checking, starting, operating and stopping the machine and attachments.

Operating techniques outlined in this publication are basic. Skill and techniques develop as the operator gains knowledge of the machine and its capabilities.

Your safety and the safety of others depends upon care and judgment in the operation of this machine. A careful operator is good insurance against an accident.

Some photographs in this publication may show details or attachments that may be different from your machine. Also, guards and covers may have been removed for illustrative purposes.

Continuing improvement and advancement of product design may have caused changes to your machine which may not be included in this publication.

Whenever a question arises regarding your machine, or this publication, please consult your Caterpillar dealer for the latest available information.

Product: EXCAVATOR

Model: 215B EXCAVATOR 2XC

Configuration: 215B EXCAVATOR 2XC00001-UP (MACHINE) POWERED BY 3204 ENGINE

Operation and Maintenance Manual 215B TRACK-TYPE EXCAVATOR

Media Number -SEBU5999-00

Publication Date -01/06/1984

Date Updated -11/10/2001

Safety

SMCS - 7606

Warning Signs and Labels

There are several specific safety signs on your machine. Their exact location and description of the hazard are reviewed in this section. Please take the time to familiarize yourself with these safety signs.

Make sure that you can read all safety signs. Clean or replace these if you cannot read the words or see the pictures. When cleaning the labels use a cloth, water and soap. Do not use solvent, gasoline, etc.

You must replace a label if it is damaged, missing or cannot be read. If a label is on a part that is replaced, make sure a new label is installed on the replaced part. See your Caterpillar dealer for new labels.



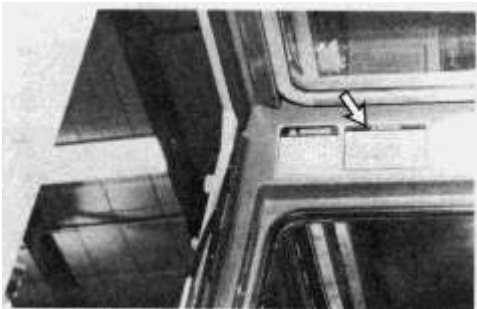
Do not operate this machine unless you have read and understand the instructions in the "Operation" Guide. Improper machine operation is dangerous and could result in injury or death. The "Operation" Guide is in holder located in operator's compartment or on seat back. Contact any Caterpillar dealer for a replacement guide. Proper operation is your responsibility.



Located in the cab.

 **WARNING**

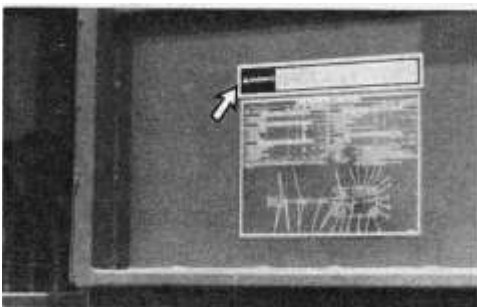
Know the maximum height and reach of your machine. Serious injury or death by electrocution can occur if machine or attachments are not kept a safe distance from electrical power lines. Keep distance at least 3 m (10 feet) plus additional 10 mm (0.4 inch) for each 1,000 volts over 50,000 volts.



Located in the cab.

 **WARNING**

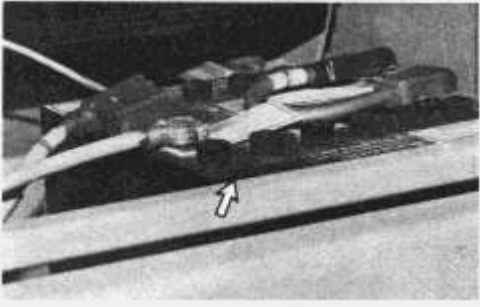
Lubrication, maintenance or repair of this machine can be dangerous unless performed properly. Each person must satisfy himself that he has the necessary skill and information, proper tools and equipment, and that his work method is safe and correct. Caterpillar dealers are available to provide service and information.



Located on the cab door.

 **WARNING**

To prevent possible injury refer to the "Operation" Guide before attempting to boost start this machine.



Located in the battery compartment.

POISON/DANGER CAUSES SEVERE BURNS

Contains sulfuric acid. Avoid contact with skin, eyes or clothing. Antidote: EXTERNAL - Flush with water. INTERNAL - Drink large quantities water or milk. Follow with milk of magnesia, beaten egg or vegetable oil. Call physician immediately. Eyes: Flush with water for 15 minutes and get prompt medical attention. Batteries produce explosive gases. Keep sparks, flame, cigarettes away. Ventilate when charging or using in enclosed space. Always shield eyes when working near batteries.

KEEP OUT OF REACH OF CHILDREN.



Swing lock must be engaged before shipping machine. If lock is not engaged, upper structure can swing, resulting in possible personal injury.



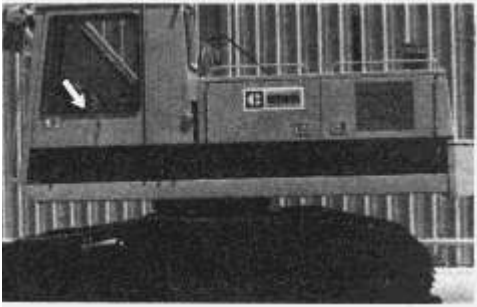
Located in the cab.



CLAMSHELL SWING

Personal injury may result if clamshell swings into the cab or a person in the work area.

Clamshell can swing in all directions.



Located in the cab.



HIGH PRESSURE CYLINDER

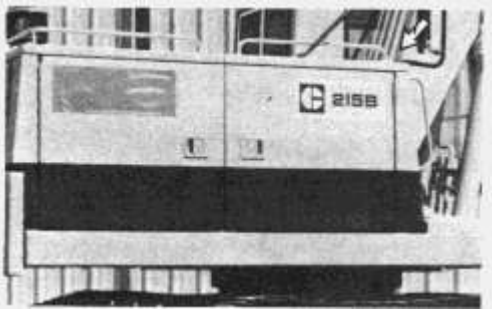
Apply lubricant through fitting only to tighten track. Track sag should be between 25 and 38 mm (1 and 1 1/2 inches). When track is too tight relieve pressure by opening relief valve 1 turn.



Located on the roller frame.



Covered external vent plugs may be under high pressure. Do not loosen or remove without consulting your CATERPILLAR DEALER for proper procedure.



Located on the boom.

 **WARNING**

With final drive disconnected machine has no brakes and will roll free on a slope or while towing.

When final drive is disconnected always block both tracks.



Located on the cab door.

 **WARNING**

Do not lift vehicle by counterweight eyes. See Operator's Guide for proper method for lifting vehicle.



Located above the counterweight.

General



Attach a "DO NOT OPERATE" or similar warning tag to start switch or controls before servicing or repairing the machine. These tags, Form SEHS7332, are available from your Caterpillar dealer.

Perform all maintenance unless otherwise specified as follows:

The swing lock pin locked.

The travel pedals released.

The hydraulic and directional lever engaged.

The engine stopped.

The start switch key off and the key removed.

The disconnect switch off and the key removed.

Wear a hard hat, protective glasses and other protective equipment as required by job conditions.

Do not wear loose clothing or jewelry that can catch on controls or other parts of the machine.

Make certain all protective guards and covers are secured in place on the machine.

Keep the machine, especially the deck, walkways and steps, free of foreign material, such as debris, oil, tools and other items which are not part of the machine.

Secure all loose items such as lunch boxes, tools and other items which are not part of the machine.

Know the hand signals and who gives them. Accept signals from one person only.

Never put maintenance fluids into glass containers.

Report all needed repairs.

Do not allow unauthorized personnel on the machine.

Pressure air can cause personal injury. When using pressure air for cleaning, wear a protective face shield and protective clothing.

Crushing or Cutting Prevention

Never attempt adjustments while the machine is moving or the engine is running unless otherwise specified.

Support equipment and implements properly when working beneath them. Do not depend on hydraulic cylinders to hold it up. Any implement can fall if a control is moved, or a hydraulic line breaks.

Where there are implement linkages, the clearance in the linkage area will increase or decrease with movement of the implement.

Stay clear of all rotating and moving parts.

Keep objects away from moving fan blades. They will throw or cut any object or tool that falls or is pushed into them.

Do not use a kinked or frayed wire rope cable. Wear gloves when handling the wire rope cable.

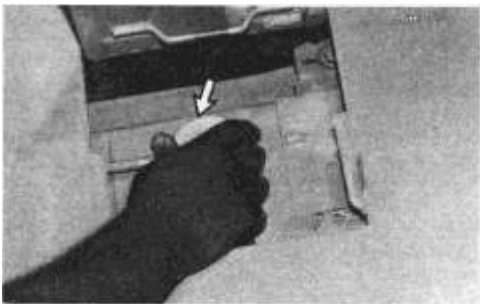
Retainer pins, when struck with force, can fly out and injure nearby persons.

Wear protective glasses when striking a retainer pin to avoid injury to your eyes.

Chips or other debris can fly off objects when struck. Make sure no one can be injured by flying debris before striking any object.

Burn Prevention

At operating temperature, the engine coolant is hot and under pressure. The radiator and all lines to heaters or the engine contain hot water or steam. Any contact can cause severe burns.



Check the coolant level only after the engine has been stopped and the filler cap is cool enough to remove with your bare hand.

Remove the cooling system filler cap slowly to relieve pressure.

Cooling system conditioner contains alkali. Avoid contact with the skin and eyes and do not drink, to prevent personal injury.

Allow cooling system components to cool before draining.

Hot oil and components can cause personal injury. Do not allow hot oil or components to contact the skin.

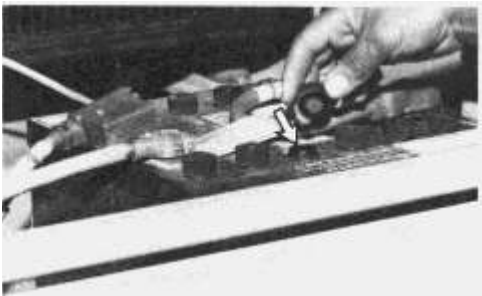
At operating temperature, the hydraulic tank is hot and can be under pressure.



Remove the hydraulic tank filler cap only after the engine has been stopped and the filler cap is cool enough to remove with your bare hand.

Remove the hydraulic tank filler cap slowly to relieve pressure.

Relieve all pressure in air, oil, fuel or cooling systems before any lines, fittings or related items are disconnected or removed.



Battery electrolyte contains acid and can cause injury. Avoid contact with the skin and eyes.

Fire or Explosion Prevention

All fuels, most lubricants and some coolant mixtures are flammable.

Do not smoke while refueling or in a refueling area.

Do not smoke in areas where batteries are charged, or where flammable materials are stored.

When starting from an external source, always connect the positive (+) boost cable to the positive (+) terminal of the battery of the engine to be started.

Attach the negative (-) boost ground cable last, away from the battery. See the "Starting the Engine" section for specific instructions.

Clean and tighten all electrical connections. Check daily for loose or frayed electrical wires. Have all loose or frayed electrical wires tightened, repaired or replaced before operating the machine.

Keep all fuels and lubricants stored in properly marked containers and away from all unauthorized persons.

Store all oily rags or other flammable material in a protective container, in a safe place.

Do not weld or flame cut on pipes or tubes that contain flammable fluids. Clean them thoroughly with nonflammable solvent before welding or flame cutting on them.

Remove all flammable materials such as fuel, oil and other debris before they accumulate on the machine.

Do not expose the machine to flames, burning brush, etc., if at all possible.

Do not bend or strike high pressure lines. Do not install bent or damaged lines, tubes or hoses.

Repair any loose or damaged fuel and oil lines, tubes and hoses. Leaks can cause fires.

Inspect all lines, tubes and hoses carefully. Do not use your bare hand to check for leaks. Tighten all connections to the recommended torque.

Make sure that all clamps, guards and heat shields, are installed correctly to prevent vibration, rubbing against other parts and excessive heat during operation.

Shields, which protect hot exhaust components from oil or fuel spray in the event of a line, tube or seal failure, must be installed correctly.

Ether is flammable. Do not smoke while changing ether cylinders.

Do not store replacement ether cylinders in living areas or in the operator's compartment.

Use ether only in well ventilated areas.

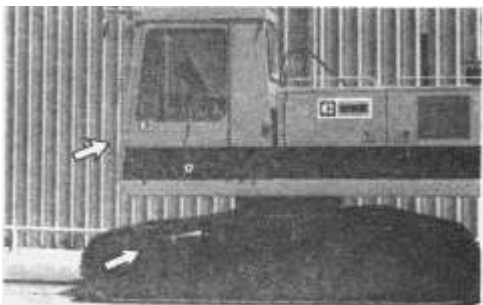
Keep ether cylinders out of the reach of unauthorized persons.

Do not store ether cylinders in direct sunlight. Discard cylinders in a safe place. Do not puncture or burn cylinders.

Fire Extinguisher

Always have a fire extinguisher on the machine and know how to use it. Inspect and have it serviced as recommended on its instruction plate.

Mounting and Dismounting



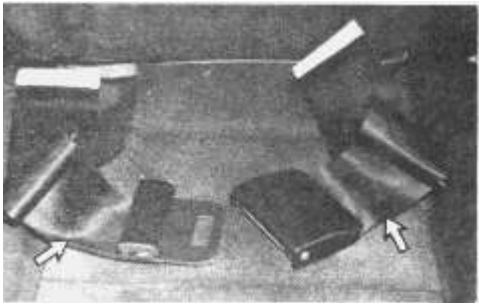
Mount and dismount the machine only where steps and/or handholds are provided.

Use both hands and face the machine, when mounting and dismounting.

Never get on or off a moving machine. Never jump off the machine.

Do not try to climb on or off the machine when carrying tools or supplies. Use a hand line to pull equipment up onto the platform.

Preparing to Start the Engine



Inspect the condition of the seat belt and mounting hardware. Replace any damaged or worn parts. Replace the seat belt regardless of appearance, after three years of use.

Adjust the seat so that full pedal travel can be obtained with the operator's back against the seat back.

Make sure the machine is equipped with a lighting system as required by conditions.

Make sure all lights are working properly.

Make sure no one is working on, underneath or close to the machine before starting the engine or beginning to move the machine. Make sure the area is free of personnel.

Starting the Engine



Do not start the engine or move any of the controls if there is a "DO NOT OPERATE" or similar warning tag attached to the start switch or controls.

Move all implement controls to the HOLD position before starting the engine.

Engage the hydraulic and directional control. Engage the swing brake control.

Start and operate the engine in a well ventilated area only. In an enclosed area, vent the exhaust to the outside.

Preparing to Operate the Machine

Clear all personnel from the machine and the area.

Clear all obstacles from the path of the machine. Beware of hazards such as wires, ditches, etc.

Be sure all windows are clean. Secure the doors and windows in either the open or shut position.

For best vision, especially close to the machine, adjust the rear view mirrors.

Make sure the machine horn, the backup alarm and all other warning devices are working properly.

Fasten the seat belt securely.

Check for proper operation of all controls and protective devices while moving slowly in an open area.

Operating the Machine

The operator must satisfy himself that no one will be endangered before moving the machine.

Operate the machine only while seated.

Operate the controls only with the engine running.

Do not allow riders on the machine unless additional seat, seat belt and Falling Object Protective Structure (FOPS) are provided.

Report any needed repairs noted during operation.

Carry implements close to the ground, approximately 40 cm (15 inches) above ground level.

Stay a safe distance from the edge of cliffs, overhangs and slide areas.

If the machine begins to sideslip on a grade, immediately dispose of the load and turn the machine downhill.

Be careful to avoid the condition which could lead to tipping when working on hills, banks or slopes, and when crossing ditches, ridges or other obstructions.

Work up and down slopes, rather than sideways, whenever possible.

Keep the machine under control and do not work it over its capacity.

Be sure hitch points and the towing device are adequate.

Connect trailing equipment to a drawbar or hitch only.

Never straddle a wire rope cable or similar device, nor allow others to do so.

Personnel should not be between the machine and trailing equipment when maneuvering to connect them. Block the tongue or hitch of trailing equipment to align it with the drawbar or hitch.

Parking the Machine

Park on a level surface. If necessary to park on a grade, block the machine.

Release the directional pedals to stop the machine.

Engage the hydraulic and directional control

Engage the swing brake control.

Lower all implements to the ground and apply slight down pressure.

Stop the engine.

Turn the start switch key to the OFF position.

Remove the start switch key and the disconnect switch key.

Product: EXCAVATOR

Model: 215B EXCAVATOR 2XC

Configuration: 215B EXCAVATOR 2XC00001-UP (MACHINE) POWERED BY 3204 ENGINE

Operation and Maintenance Manual 215B TRACK-TYPE EXCAVATOR

Media Number -SEBU5999-00

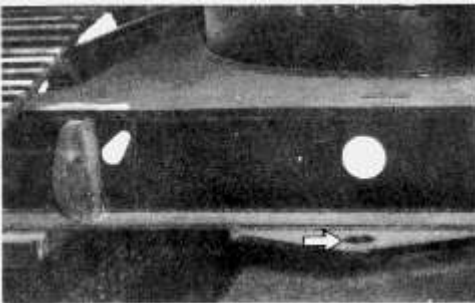
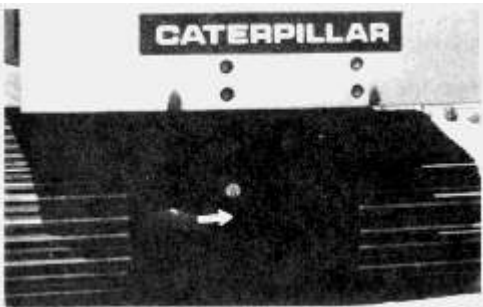
Publication Date -01/06/1984

Date Updated -11/10/2001

Towing

SMCS - 7606

These towing instructions are for emergencies only. Haul the machine if a long distance must be traveled.



WARNING

Personal injury or death could result when towing a disabled machine incorrectly.

Attach the tow line only to the tow hooks on the frame. Do not tow faster than 8 kph (5 mph).

Be sure the tow line is strong enough and is in good condition.

Shielding must be provided on the towing machine to protect the operator if the tow line breaks.

Do not have tension on the tow line when inspecting it. Do not jerk the tow line; it may break.

Use a tow bar if the machine is to be moved more than a few feet. If a tow bar is not available, attach a machine of equal size to the rear of the towed machine to provide braking when going downhill.

Do not allow riders on a machine that is being towed.

Always block both tracks before disengaging the final drives. When the final drives are disengaged, the brakes are also disengaged. The machine can move.

Use precautions to maintain control of the machine when using another machine to tow it.

Follow the recommendations below, to properly perform the towing procedure.

This machine is equipped with spring applied, hydraulic pressure released brakes. If the engine or power train hydraulics are inoperable, the brakes are applied and the machine can not be moved.

Before towing, make sure the tow line or bar is in good condition and has enough strength for the towing situation involved. Use a towing line or bar with a strength of at least 1.5 times the gross weight of the towing machine, for a disabled machine stuck in mud or when towing on a grade.

Keep the tow line angle to a minimum. Do not exceed a 30° angle from the straight ahead position.

Quick machine movement could overload the tow line or bar and cause it to break. Gradual and smooth machine movement will work better.

Normally, the towing machine should be as large as the disabled machine. Satisfy yourself that the towing machine has enough brake capacity, weight and power, to control both machines for the grade and distance involved.

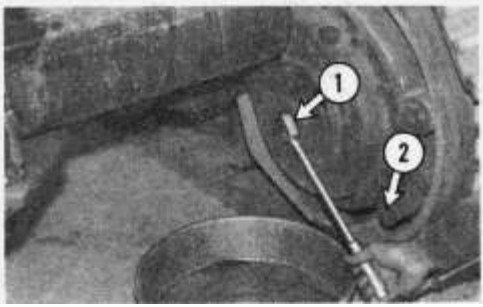
To provide sufficient control and braking when moving a disabled machine downhill, a larger towing machine or additional machines connected to the rear could be required. This will prevent it from rolling uncontrolled.

The different situation requirements cannot be given, as minimal towing machine capacity is required on smooth level surfaces to maximum on inclines or poor surface conditions.

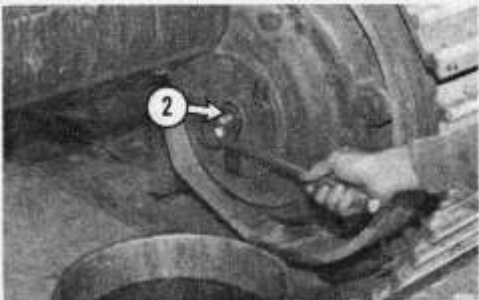
NOTICE

Do not operate the track motors with the final drives disengaged. Damage could result.

To tow the machine, both final drives must be disengaged to prevent machine damage.



1. To disengage a final drive, block the tracks. Remove the thrust plug (1) from the center of the final drive case. Remove the puller bolt and washer (2) from the storage hole on the final drive case.



2. Install and tighten the puller bolt until the sun gear is pulled out of engagement with the planet gears.

NOTE: Torque lockup may require forcing a partial revolution of the sprocket to allow disengagement of the sun gear. Move the machine slightly with the tow line.

Product: EXCAVATOR

Model: 215B EXCAVATOR 2XC

Configuration: 215B EXCAVATOR 2XC00001-UP (MACHINE) POWERED BY 3204 ENGINE

Operation and Maintenance Manual 215B TRACK-TYPE EXCAVATOR

Media Number -SEBU5999-00

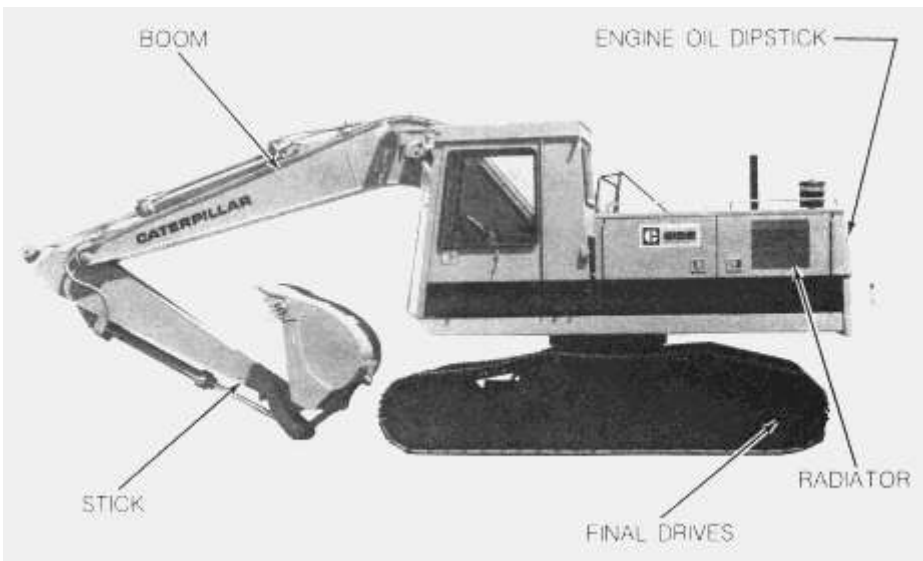
Publication Date -01/06/1984

Date Updated -11/10/2001

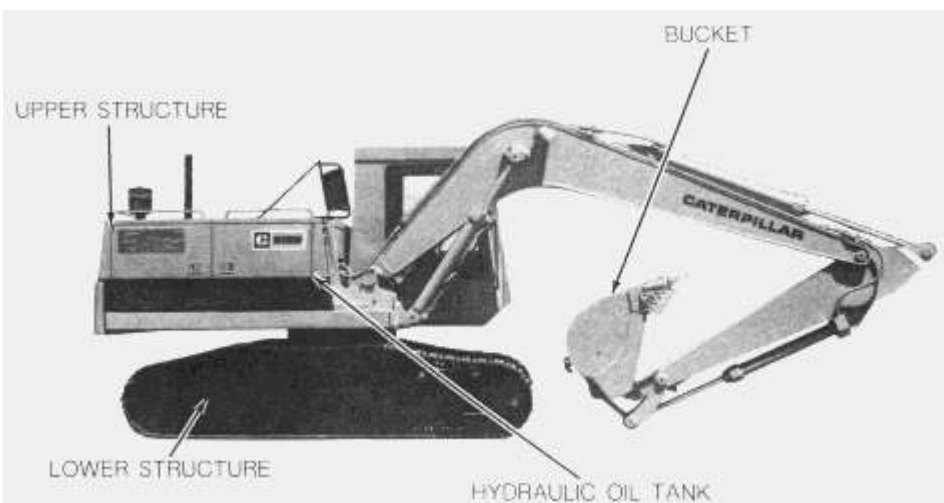
Model Views

SMCS - 7606

Left Side



Right Side



Thank you so much for reading.
Please click the “Buy Now!”
button below to download the
complete manual.



After you pay.

You can download the most
perfect and complete manual in
the world immediately.

Our support email:

ebooklibonline@outlook.com