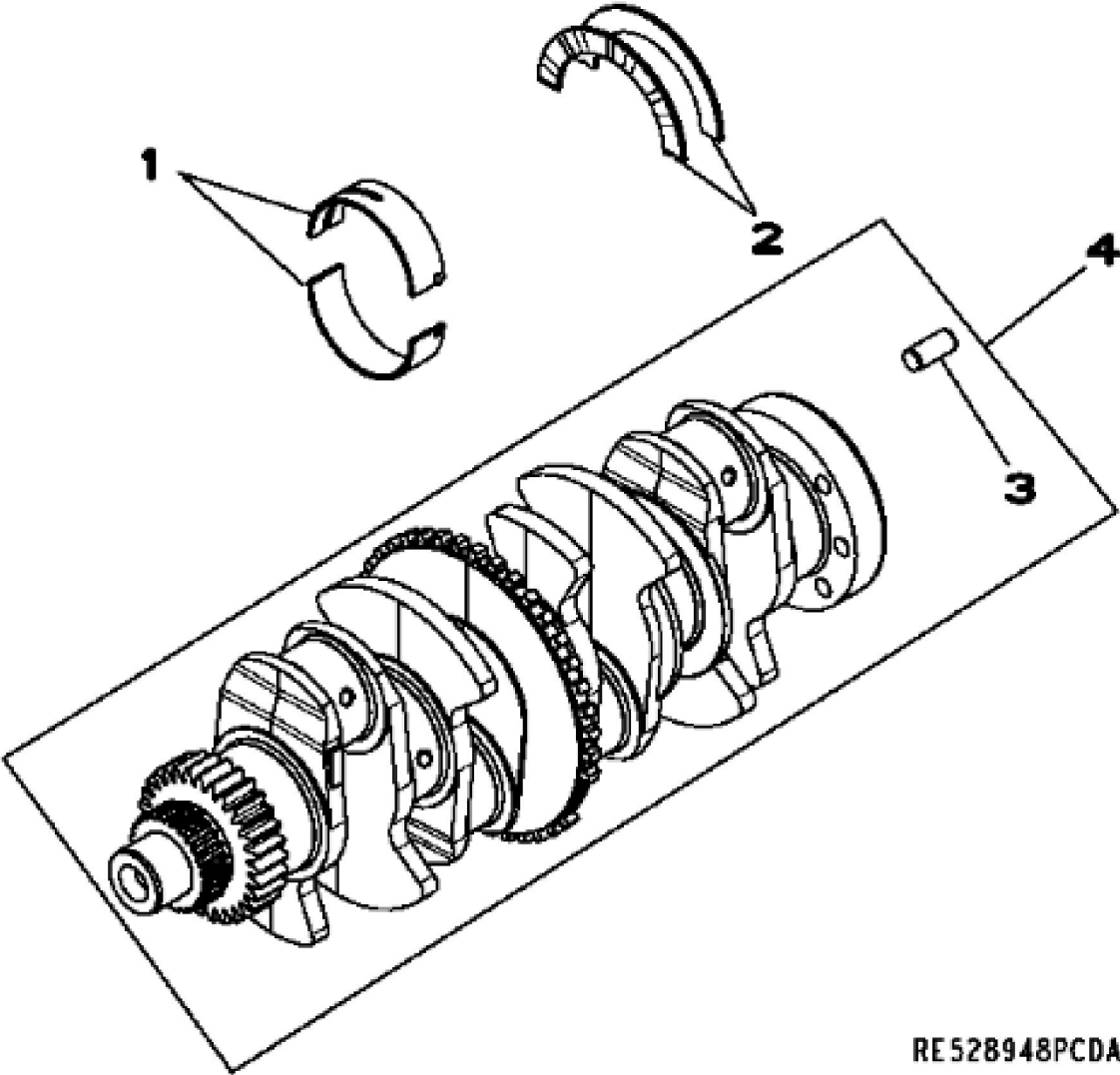


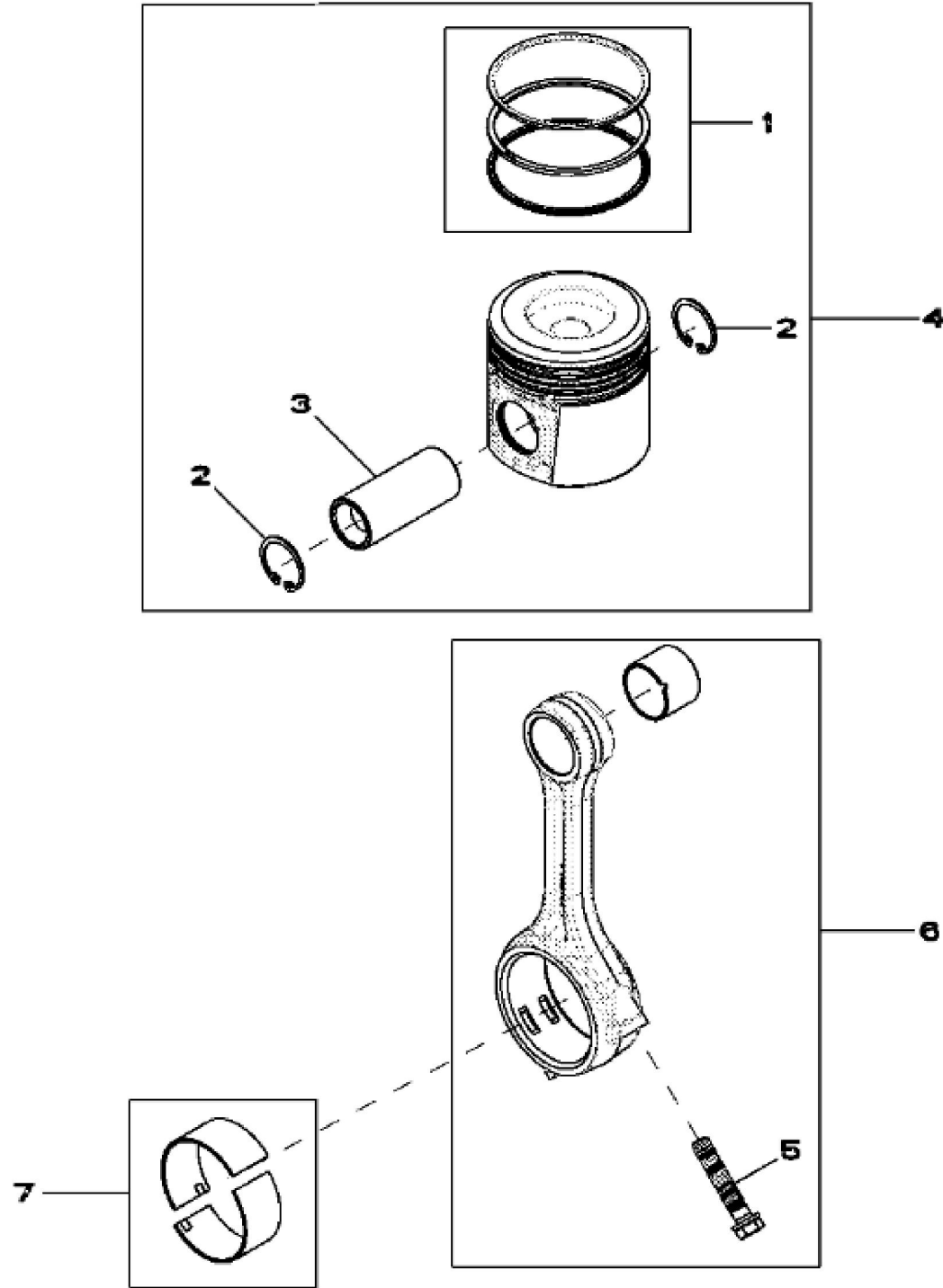
KEY	PART NO.	PART NAME	QTY	REMARKS	
1	CYLINDER BLOCK	NA	(NOT AVAILABLE SEPARATELY) (MARKED R522220)NSEP	
2	R528188	PIN	4		
3	R502725	PLUG	1	(DIPSTICK TUBE)	
4	34M7247	SPRING PIN	2	11 X 16 mm	
5	RE71255	PIPE PLUG	24	1/8''-27NPT	
6	R504965	PLUG	1		
7	R48685	DOWEL PIN	2	(SUB FOR A120R)	
8	15H685	PIPE PLUG	1	1/4", 1/4''-18NPT	
9	R116466	PLUG	6		
10	R515003	SCREW	8		
11	R515004	SCREW	2		
12	R505135	ORIFICE	4		
13	R503315	BUSHING	4		
14	T18891	PLUG	1	OD 16MM	
15	R504808	BUSHING	4		
16	L157372	SCREW	2		
17	CAMSHAFT	1	(MARKED R528191) (ORDER RE533933)(9901)	
17	RE533933	CAM KIT	1		
17	SE502116	CAMSHAFT REMAN	1	(REMAN FOR RE533933)	
18	R515112	SHIM	1	(Friction Washer)	
19	RE518215	BALL BEARING	1		
20	R523409	SPUR GEAR	1		
21	R522976	WHEEL	1		
22	19M7923	CAP SCREW	4	M6 X 12	
23	R516770	WASHER	1		
24	R517240	SCREW	1		
..	COMPLETE BLOCK ASSEMBLY	1	(9901)	



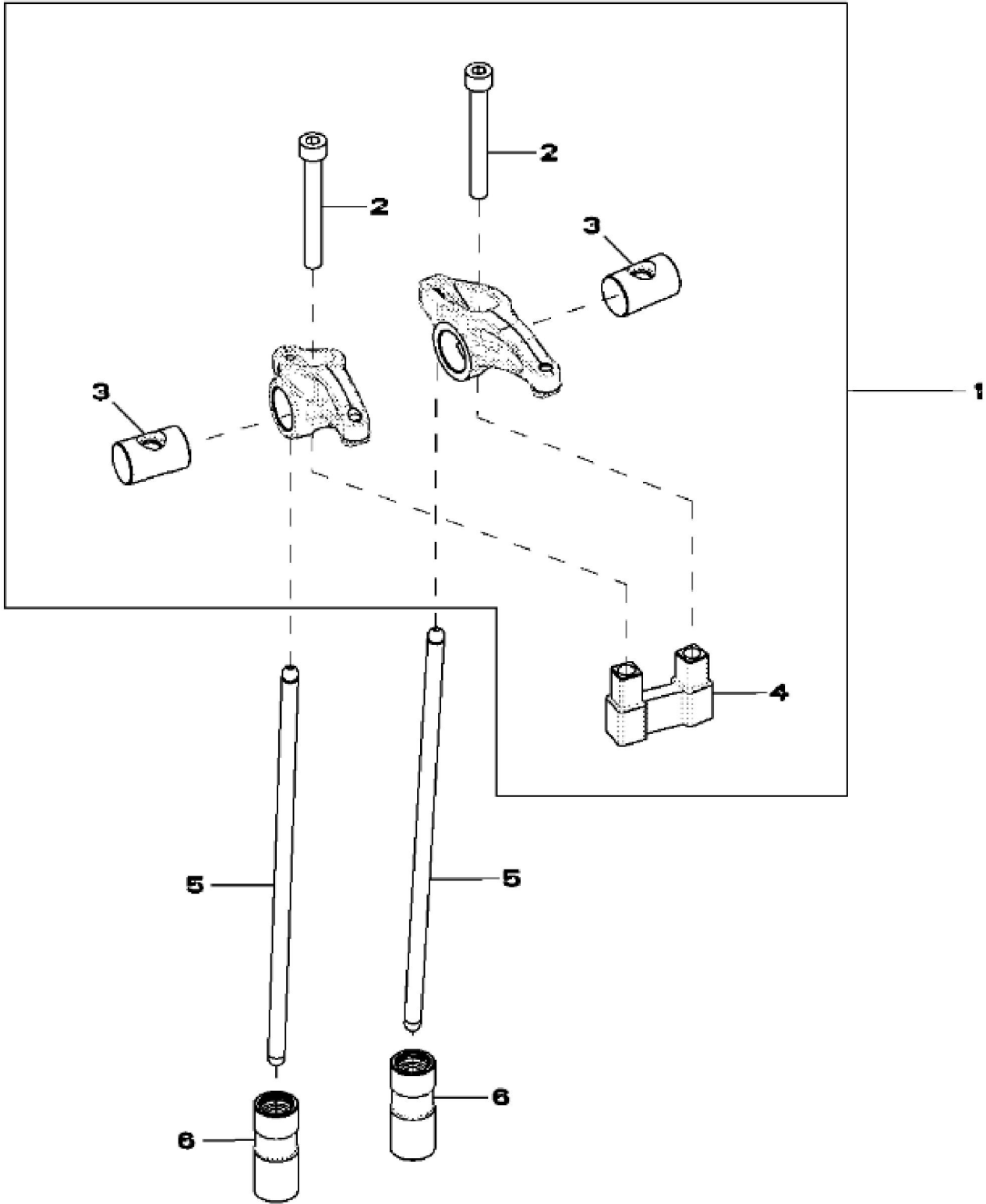
RE528948PCDA01

John Deere > Turf And Utility>LOADER, SKID-STEER >4024HT015 - LOADER, SKID-STEER >323D Compact Track Loader >20A ENGINE 4024HT011-RE528665 >ST553 - 4703 (CRANKSHAFT AND BEARINGS)

KEY	PART NO.	PART NAME	QTY	REMARKS	
1	RE520626	BEARING KIT	5	STD	
2	RE520627	BEARING KIT	2		
3	R48685	DOWEL PIN	1		
4	RE527590	CRANKSHAFT	1		



KEY	PART NO.	PART NAME	QTY	REMARKS	
1	RE533955	PISTON RING KIT	4	STD	
2	40M1855	SNAP RING	8		
3	R503480	PISTON PIN	4	OD 30MM	
4	RE536353	PISTON REPLACEMENT KIT	4	(MARKED RE527622)STD	
5	R502503	SCREW	8	M10 X 49	
6	RE504544	CONNECTING ROD	4		
6	SE501898	CONNECTING ROD REMAN	1	(REMAN FOR RE504544)	
7	RE520937	BEARING KIT	4	STD	



Thank you so much for reading.
Please click the “Buy Now!”
button below to download the
complete manual.



After you pay.

You can download the most
perfect and complete manual in
the world immediately.

Our support email:

ebooklibonline@outlook.com