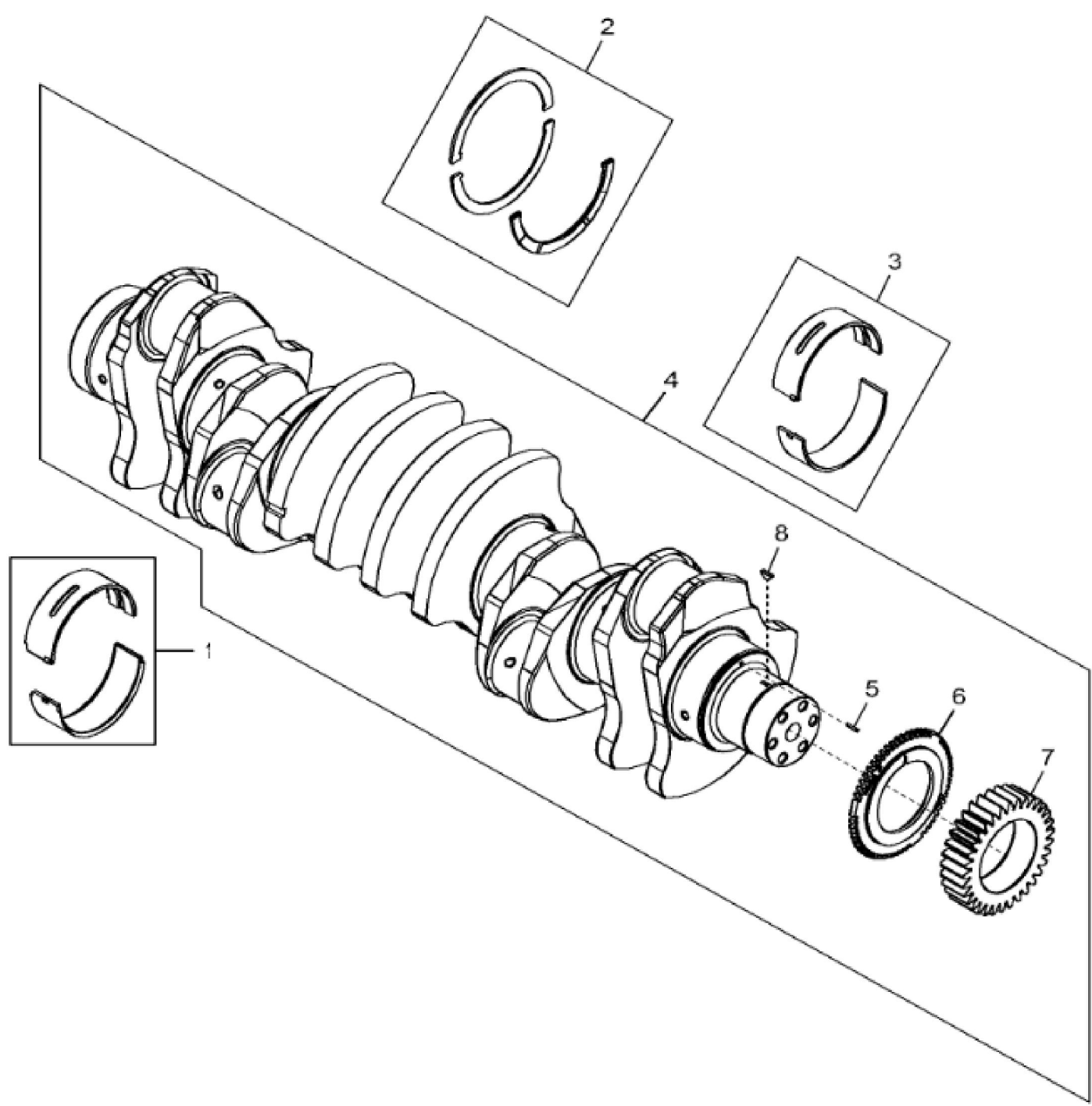
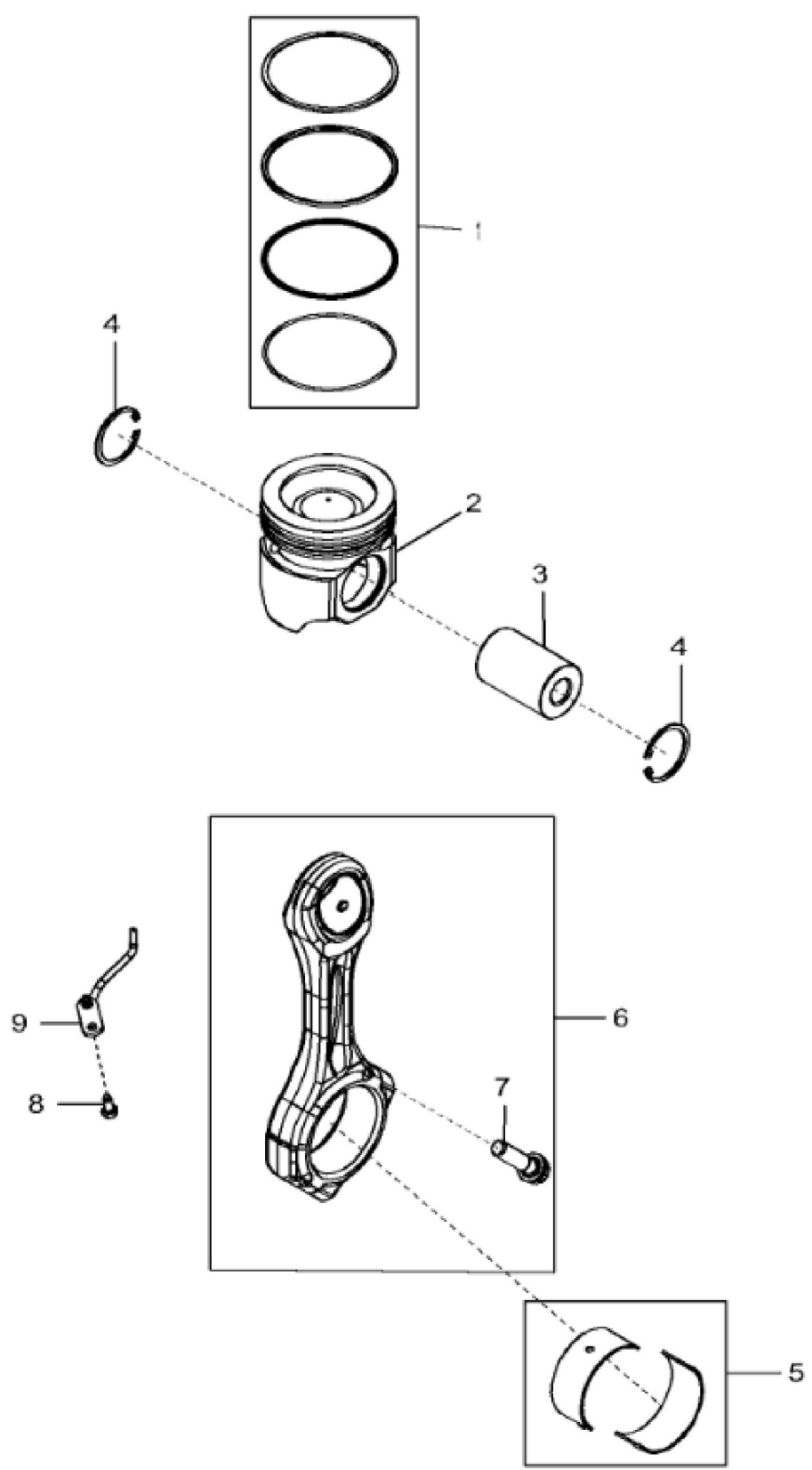


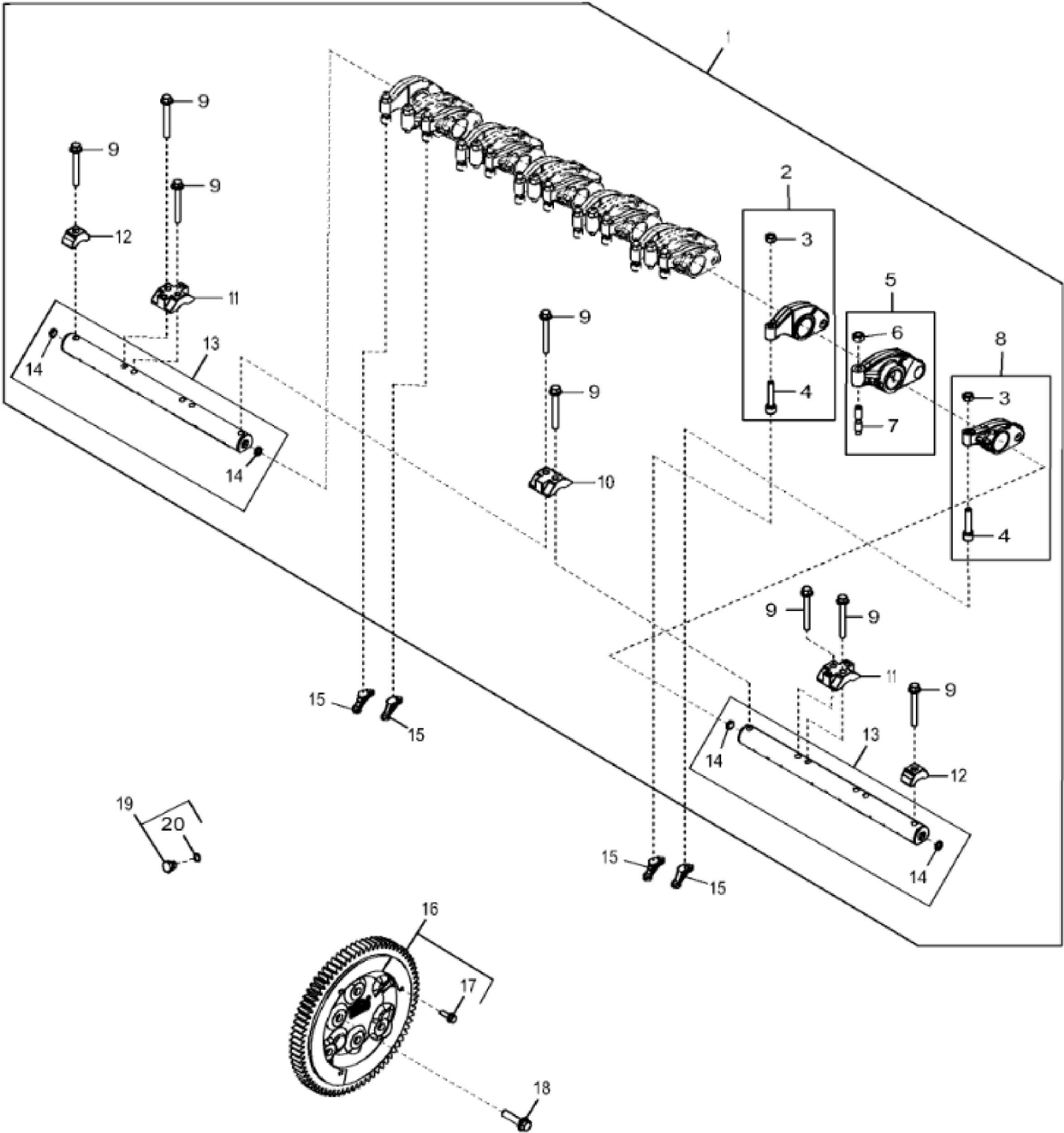
KEY	PART NO.	PART NAME	QTY	REMARKS	
1	.....	CYLINDER LINER	6	MARKED R534711; ORDER RE559263	
1	RE559263	PISTON-LINER KIT	1		
2	R116466	PLUG	1		
3	RE547712	O-RING KIT	6		
4	.....	CYLINDER BLOCK	1	MARKED R528160; ORDER RE560917	
4	RE560917	SHORT BLOCK ASSEMBLY	1		
5	R518573	BEARING CAP	1		
6	R529786	CAP SCREW	14		
7	R518501	BEARING CAP	6		
8	R524857	PLUG	2		
9	T21937	PLUG	2		
10	R539554	PLUG	1	SUB FOR R529706	
11	AT107509	PLUG	1		
12	RE46684	FITTING PLUG	2		
13	51M7041	O-RING	1	11.300 X 2.200 mm	
14	R502753	PLUG	1		
15	15H686	PIPE PLUG	1	1", USE WITH RE560917	
16	RE539116	FITTING	1		
17	51M7047	O-RING	1	23.600 X 2.900 mm	
18	R535114	SHIM	6		



KEY	PART NO.	PART NAME	QTY	REMARKS	
1	RE530786	BEARING KIT	1	KIT; R517069 AND R517070; SUB FOR RE63905	
2	RE530885	WASHER KIT	1		
3	RE530785	BEARING KIT	6	KIT; R517065 AND R517068; SUB FOR RE63903	
4	RE539339	CRANKSHAFT	1	MARKED R519559	
4	SE502681	CRANKSHAFT REMAN	1	(With Bearings) REMAN FOR RE539339	
5	34M7129	SPRING PIN	1	3 X 16 mm	
6	R528501	WHEEL	1		
7	R529684	GEAR	1	Z = 33	
8	26M4224	SHAFT KEY	1	4 X 16 mm, SUB FOR R73866	



KEY	PART NO.	PART NAME	QTY	REMARKS	
1	RE548110	PISTON RING KIT	6		
2	.....	PISTON	6	MARKED RE544914; ORDER RE559263	
2	RE559263	PISTON-LINER KIT	6	(Not Illustrated)	
3	DZ101960	PISTON PIN	6		
4	40M7201	SNAP RING	12		
5	RE562584	BEARING KIT	6	SUB FOR RE530787	
6	RE549596	CONNECTING ROD	6	SUB FOR APPL RE535966	
6	RM100065	CONNECTING ROD REMAN	1	REMAN FOR RE549596	
7	R501380	CAP SCREW	2		
8	RE530324	SELF-LOCKING SCREW	6		
9	RE529378	NOZZLE	6		



Thank you so much for reading.  
Please click the “Buy Now!”  
button below to download the  
complete manual.



After you pay.

You can download the most  
perfect and complete manual in  
the world immediately.

Our support email:

[ebooklibonline@outlook.com](mailto:ebooklibonline@outlook.com)