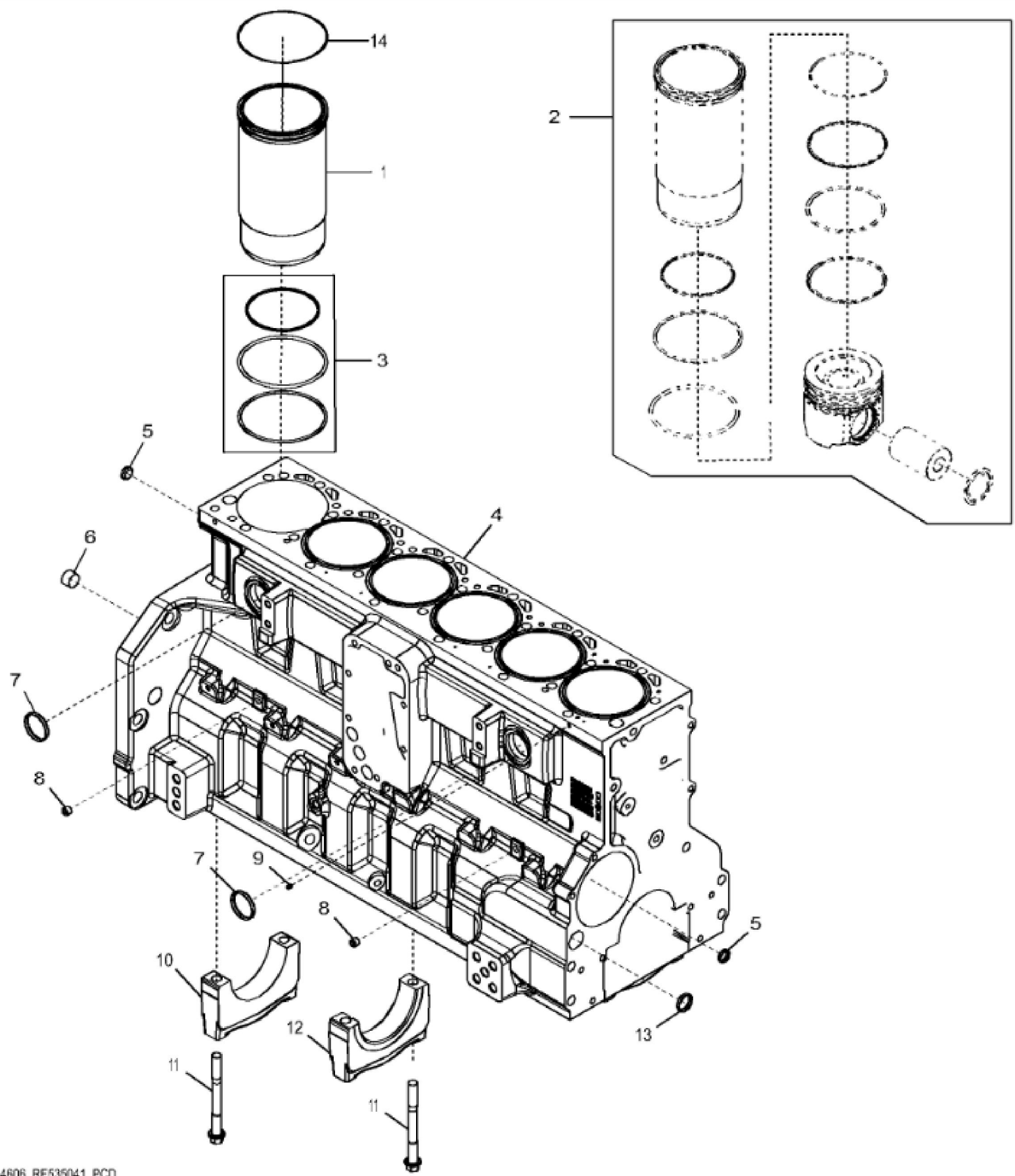
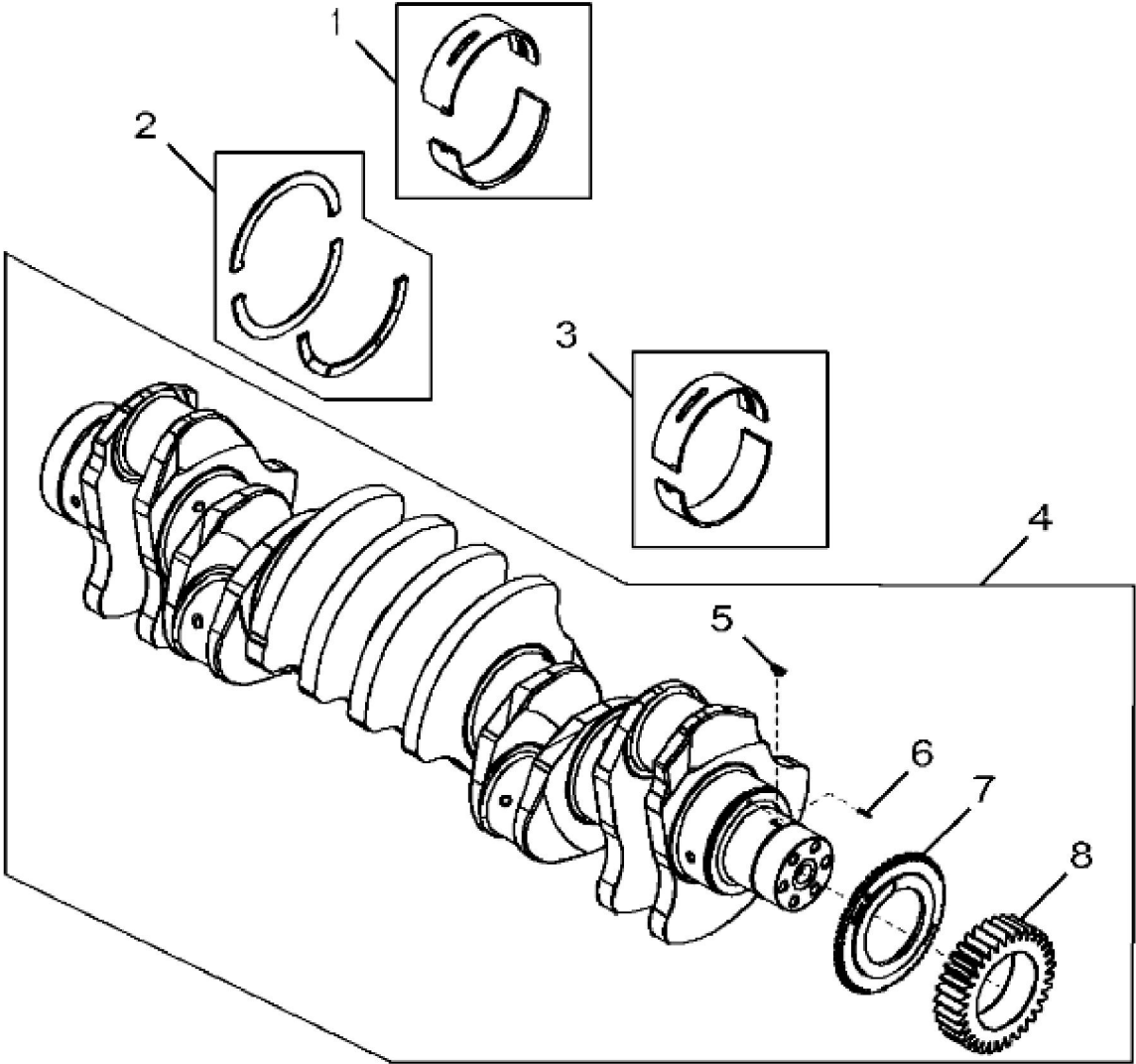


KEY	PART NO.	PART NAME	QTY	REMARKS	
1	CYLINDER BLOCK	1	MARKED R522823; ORDER RE536259	
2	T21937	PLUG	2		
3	R116466	PLUG	1		
4	R518501	BEARING CAP	6	(Main)	
5	R518579	CAP SCREW	14		
6	R518573	BEARING CAP	1	(Thrust)	
7	AT107509	PLUG	1		
8	15H685	PIPE PLUG	2	1/4"	
9	R502753	PLUG	2		
10	15H690	PIPE PLUG	1	3/4"	
11	RE547712	O-RING KIT	6		
12	CYLINDER LINER	6	ORDER RE559262	
13	R1612R	DOWEL PIN	1	(Not Illustrated)	

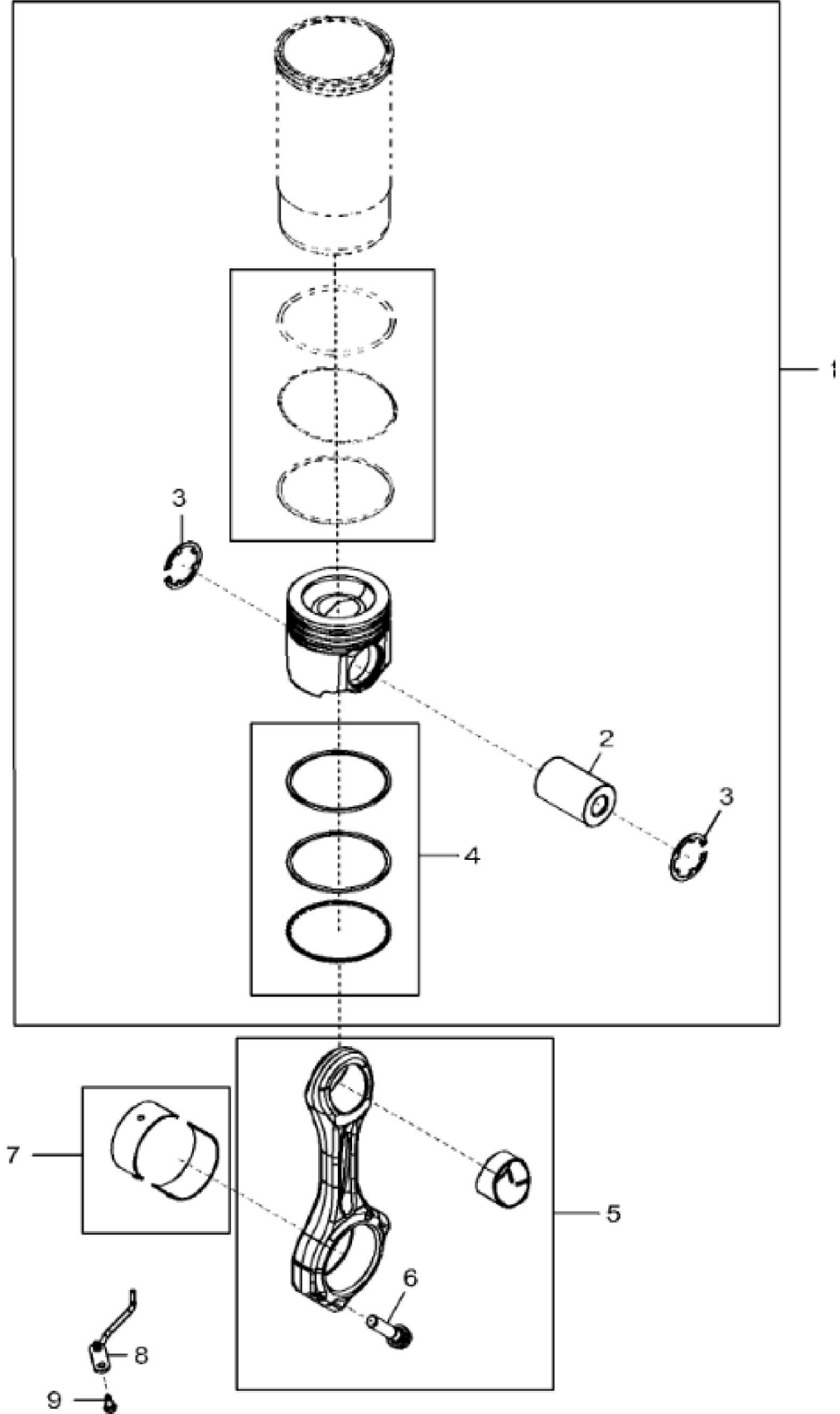


KEY	PART NO.	PART NAME	QTY	REMARKS	
1	CYLINDER LINER	1	ORDER RE530808	
2	RE559262	PISTON-LINER KIT	1	SUB FOR RE530808	
3	RE547712	O-RING KIT	6		
4	CYLINDER BLOCK	1	ORDER RE536259; MARKED R524714; USE WITH RE530817 200 mm	
4	CYLINDER BLOCK	1	ORDER RE536259; MARKED R524714; USE WITH RE541424 225 mm	
5	T21937	PLUG	2		
6	15H690	PIPE PLUG	1	3/4", SUB FOR RE501736	
7	R502753	PLUG	2		
8	15H685	PIPE PLUG	2	1/4"	
9	AT107509	PLUG	1		
10	R518501	BEARING CAP	6	(Main)	
11	R518579	CAP SCREW	14		
12	R518573	BEARING CAP	1	(Thrust)	
13	R116466	PLUG	1		
14	R535114	SHIM	6		



4702_RE524029_PCD

KEY	PART NO.	PART NAME	QTY	REMARKS	
1	RE530786	BEARING KIT	1	MARKED R517069 AND R517070	
2	RE530885	WASHER KIT	1	MARKED R520586	
3	RE530785	BEARING KIT	6	MARKED R517068 AND R517065	
4	RE522871	CRANKSHAFT	1		
4	SE501664	CRANKSHAFT REMAN	1	REMAN FOR RE522871	
5	26M4224	SHAFT KEY	1	4 X 16 mm	
6	34M7129	SPRING PIN	1	3 X 16 mm	
7	R122377	WHEEL SPEED SENSOR	1		
8	R529684	GEAR	1		



Thank you so much for reading.
Please click the “Buy Now!”
button below to download the
complete manual.



After you pay.

You can download the most
perfect and complete manual in
the world immediately.

Our support email:

ebooklibonline@outlook.com