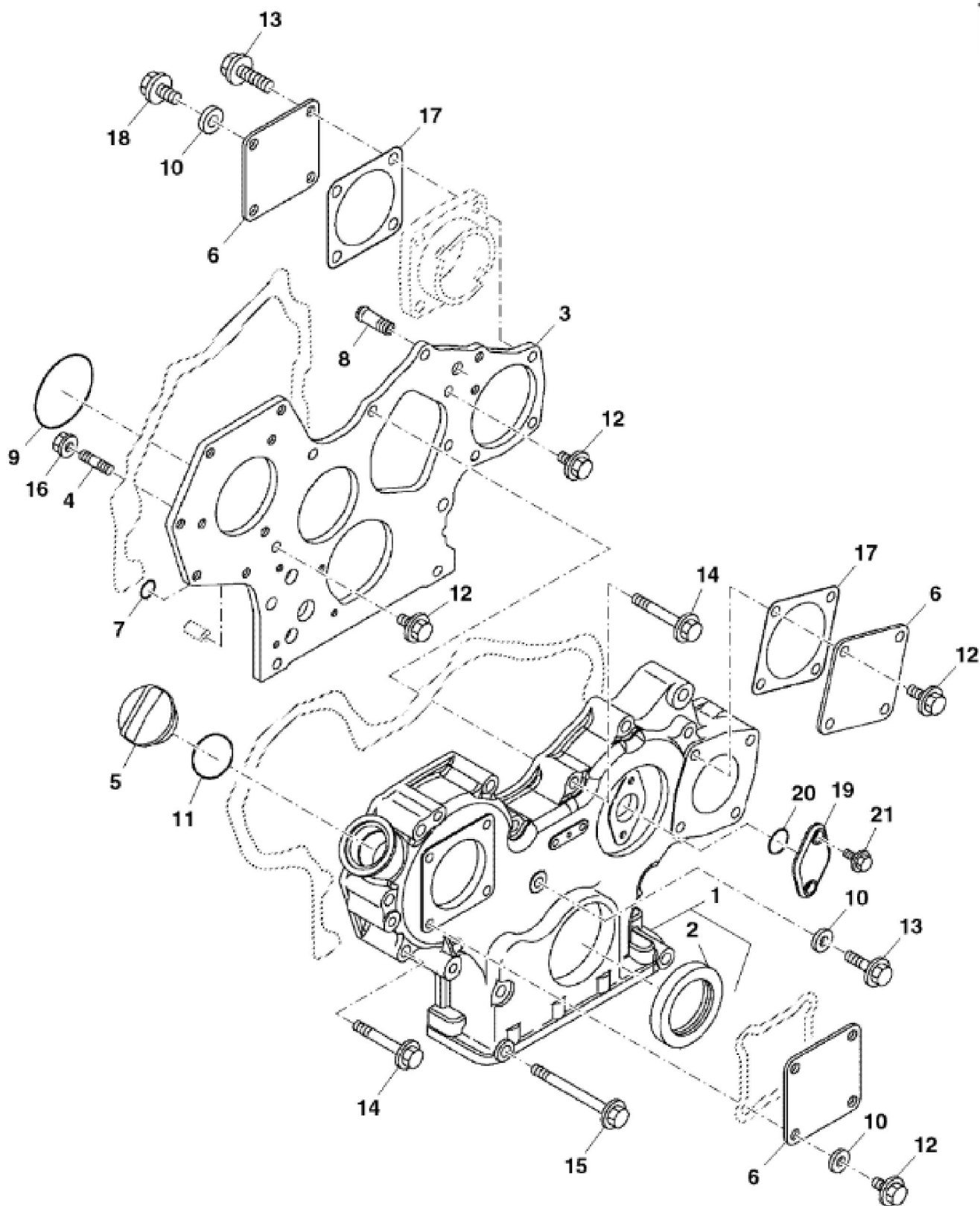
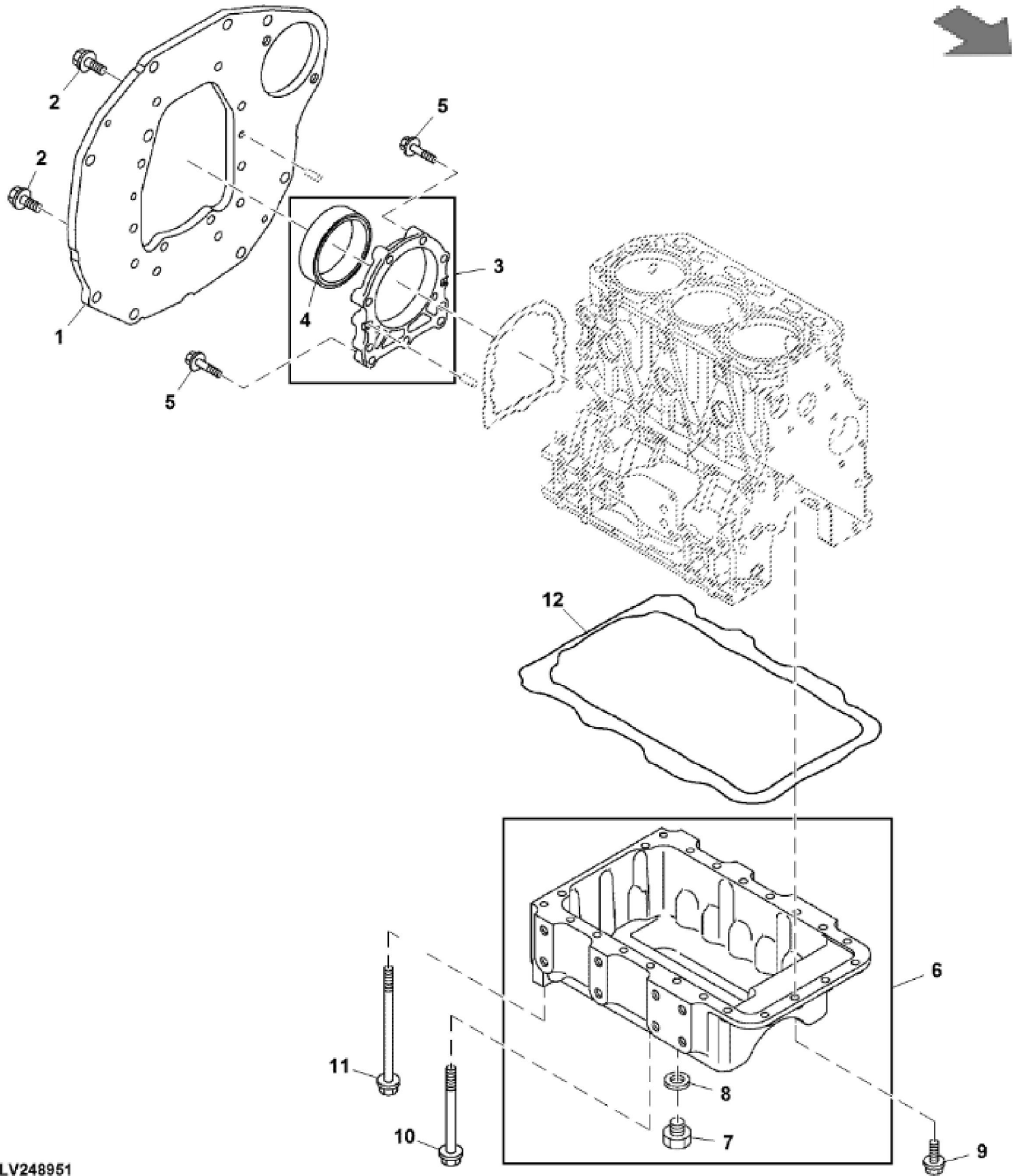


KEY	PART NO.	PART NAME	QTY	REMARKS	
1	MIA880914	CYLINDER BLOCK	1		
2	CH10314	PLUG	1		
3	M809565	DRAIN PLUG	1		
4	CH10335	PLUG	3		
5	MIA880554	BEARING	4		
5	MIA880550	BEARING	4	(Under Sized Part (U.S =0.25))	
6	15H562	PIPE PLUG	1	1"	
7	M801189	BOLT	8		
8	MIU800573	CAMSHAFT	1		
9	M87801	PLUG	2		
10	30M7023	PLUG	6		
11	M802255	PIN	4		
12	M806440	ENGINE CYLINDER HEAD GASKET	1		
13	M800974	PIPE	2		
14	MIA880555	BEARING	2		
14	MIA882809	BEARING KIT	1	(Over Sized Part (O.S = 0.25))	
15	MIU800797	SHAFT	1		
16	T110724	CHECK VALVE	3		
17	T110725	NOZZLE	3		
18	CH15575	PIN	3		
19	CH18079	SPRING PIN	2		
20	19M8317	SCREW	3	M8 X 40	
21	M801186	BOLT	14		
22	MIA13174	DIESEL ENGINE	1	MARKED 3TNV84T-BXJTE; SUB FOR MIA13024; Not Illustrated	

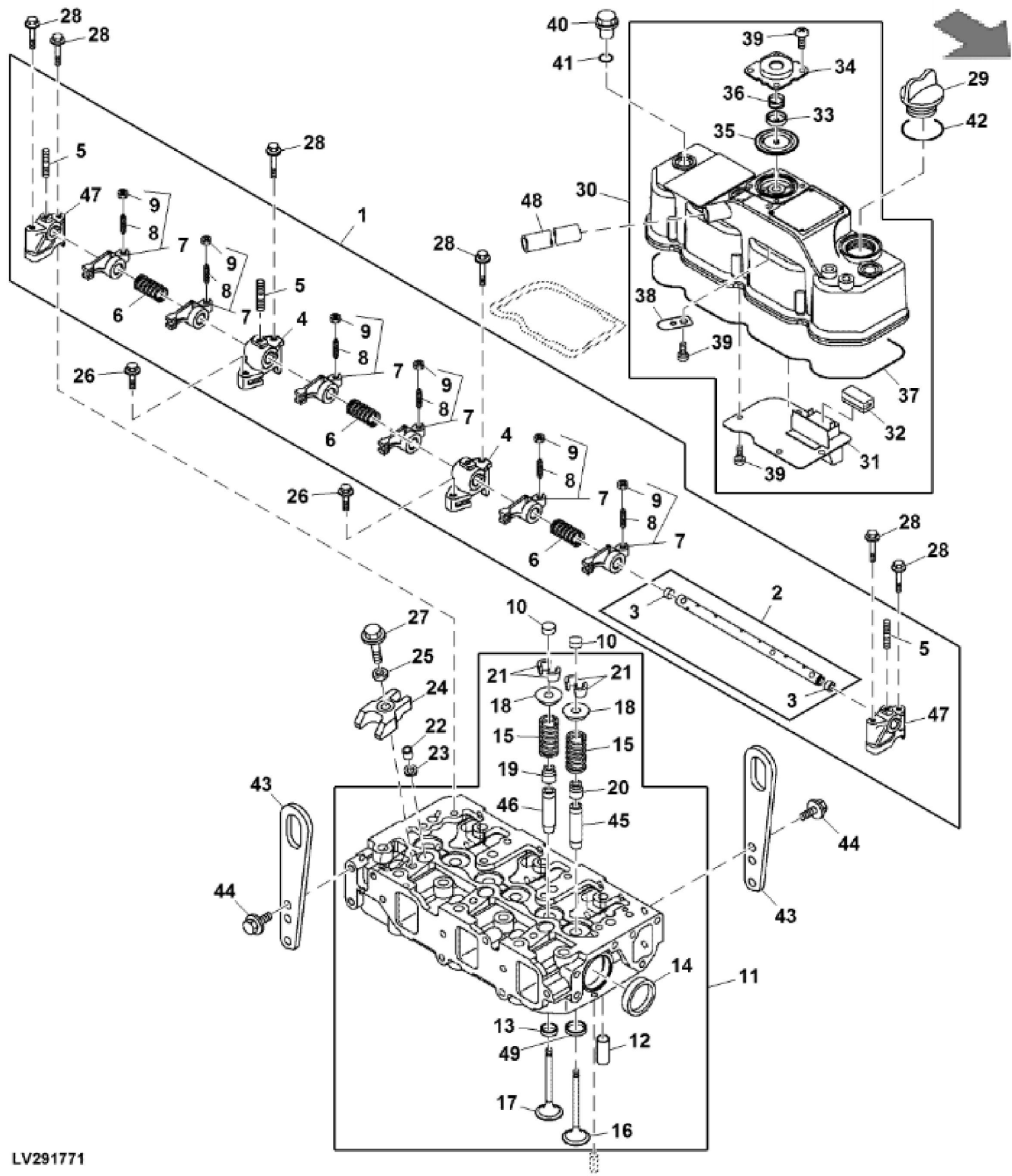


KEY	PART NO.	PART NAME	QTY	REMARKS	
1	MIA883012	HOUSING	1		
2	M811078	SEAL	1		
3	MIU800893	FLANGE	1		
4	MIU800440	STUD	3		
5	M805710	CAP	1		
6	CH18096	COVER	3		
7	M810185	O-RING	2		
8	T110730	UNIVERSAL JOINT	1		
9	CH16940	O-RING	1		
10	M803523	WASHER	6		
11	M805711	PACKING	1		
12	19M7865	SCREW	11	M8 X 16	
13	19M7868	SCREW	4	M8 X 30	
14	19M7979	SCREW	10	M8 X 55	
15	CH19136	BOLT	3		
16	14M7298	FLANGE NUT	3	M8, SUB FOR M810186	
17	MIU802578	GASKET	2		
18	19M7866	SCREW	1	M8 X 20	
19	MIU800476	COVER	1		
20	CH13526	PACKING	1		
21	19M7775	SCREW	2	M6 X 16	



LV248951

KEY	PART NO.	PART NAME	QTY	REMARKS	
1	M808634	FLANGE	1		
2	M800011	BOLT	8		
3	AM875375	CASE	1		
4	M805278	SEAL	1		
5	M808308	BOLT	9		
6	AM880870	OIL PAN	1		
7	T111565	PLUG	1		
8	M811568	WASHER	1		
9	CH19085	BOLT	6		
10	CH19136	BOLT	12		
11	T111562	BOLT	4		
12	M64850	SEALANT	1		



Thank you so much for reading.  
Please click the “Buy Now!”  
button below to download the  
complete manual.



After you pay.

You can download the most  
perfect and complete manual in  
the world immediately.

Our support email:

[ebooklibonline@outlook.com](mailto:ebooklibonline@outlook.com)