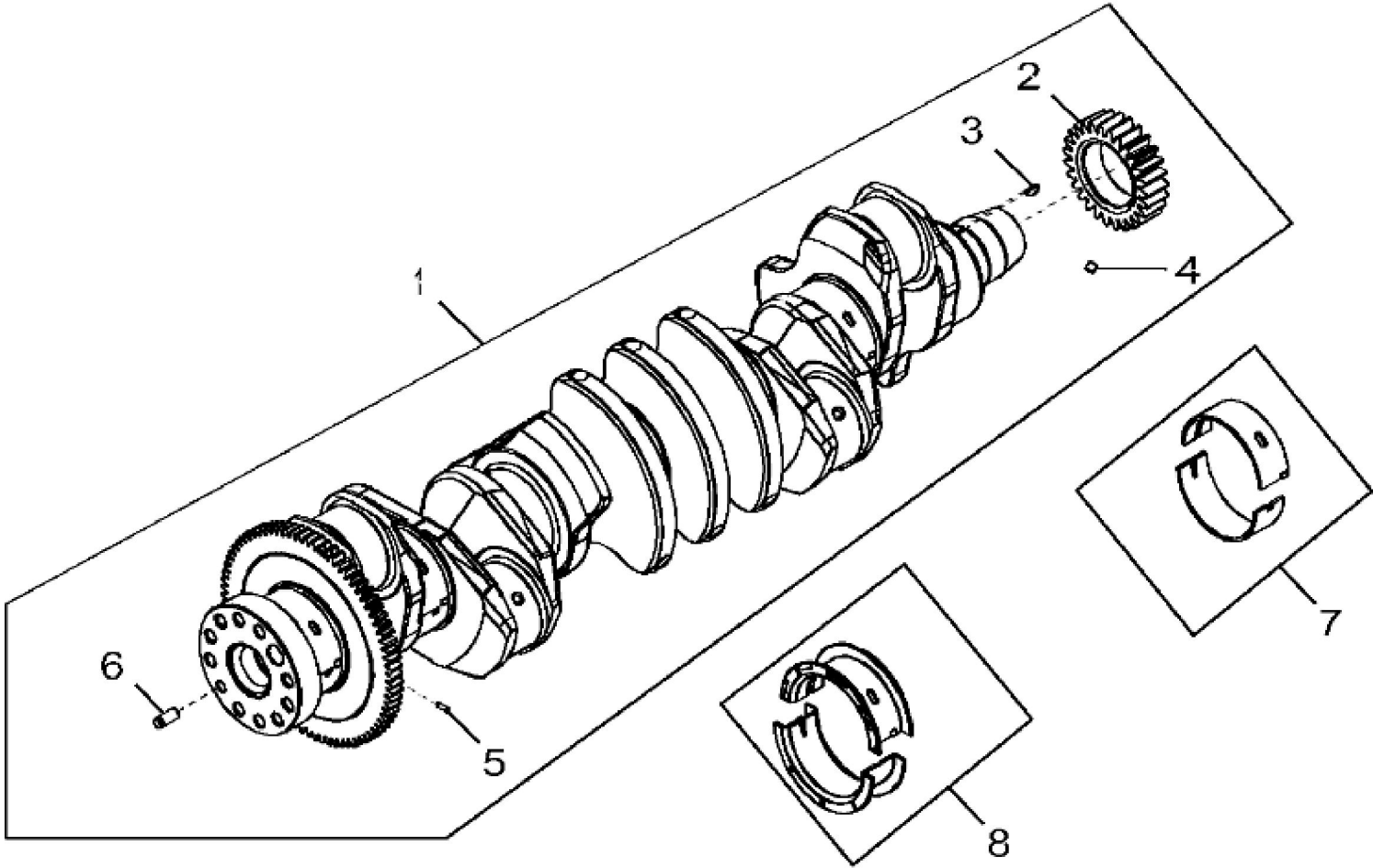
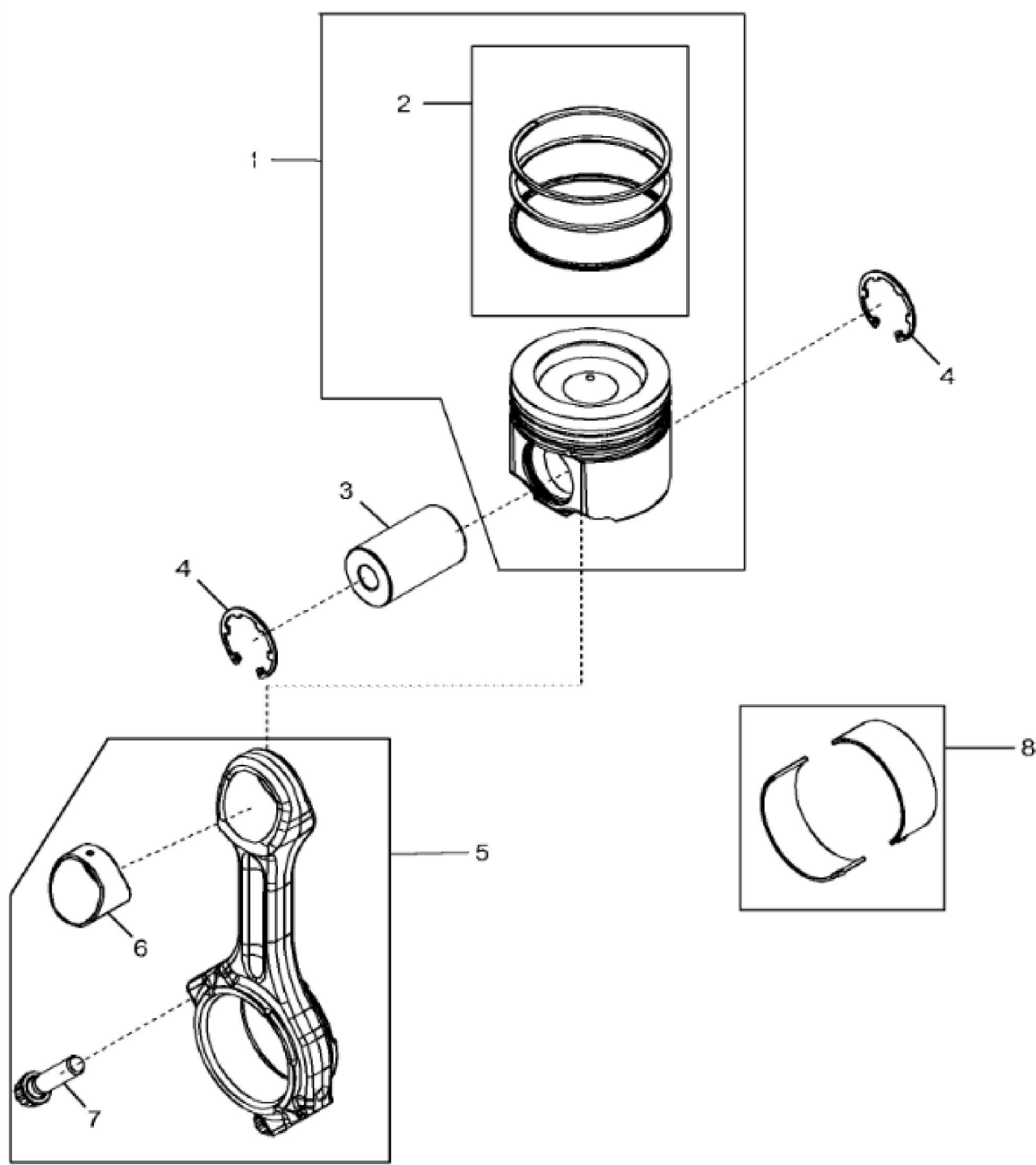


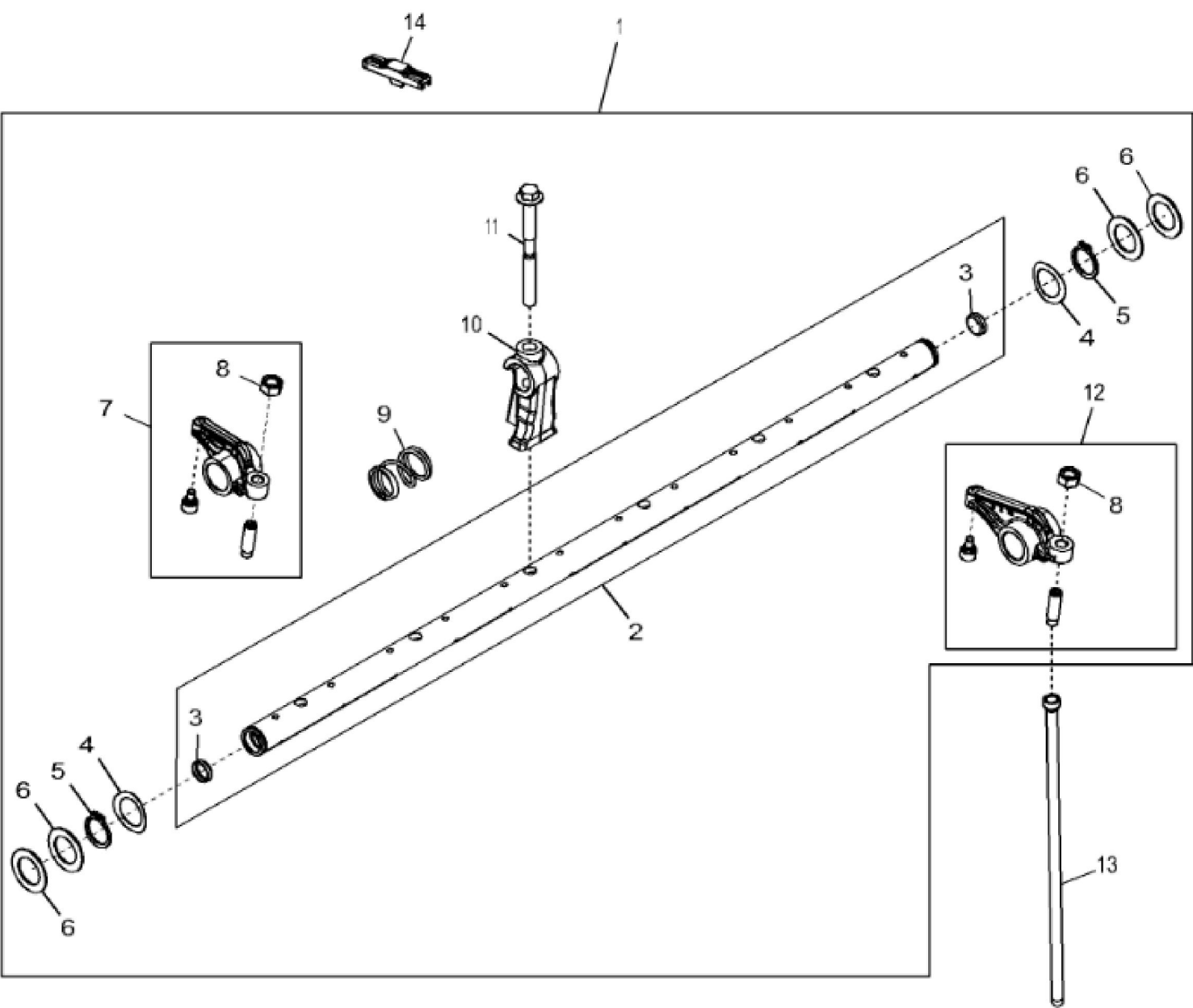
| KEY | PART NO. | PART NAME                | QTY | REMARKS                       |  |
|-----|----------|--------------------------|-----|-------------------------------|--|
| 1   | R504811  | WASHER                   | 1   |                               |  |
| 2   | R522884  | CAMSHAFT                 | 1   | SUB FOR R520366               |  |
| 2   | SE501775 | CAMSHAFT REMAN           | 1   | REMAN FOR R522884             |  |
| 3   | R542281  | GEAR                     | 1   | SUB FOR R518255               |  |
| 4   | R543260  | GEAR                     | 1   | SUB FOR R528098               |  |
| 5   | 26H91    | SHAFT KEY                | 1   | 3/16" X 1-1/4"                |  |
| 6   | .....    | CYLINDER BLOCK           | 1   | MARKED R534403; ORDER DZ10590 |  |
| 7   | R527877  | BUSHING                  | 6   |                               |  |
| 8   | R120954  | BEARING CAP              | 1   |                               |  |
| 9   | R120953  | BEARING CAP              | 6   |                               |  |
| 10  | R519287  | CAP SCREW                | 14  |                               |  |
| 11  | R82007   | PLUG                     | 1   |                               |  |
| 12  | RE57836  | PIPE PLUG                | 2   |                               |  |
| 13  | RE537640 | ENGINE OIL PRESS. SENSOR | 1   | (Engine Oil Pressure Sensor)  |  |
| 14  | RE537634 | SENSOR                   | 2   | (Magnetic Pick Up Sensor)     |  |
| 15  | RE555307 | CAM FOLLOWER ROLLER      | 12  | SUB FOR RE540586              |  |
| 16  | RE46686  | FITTING                  | 2   |                               |  |
| 17  | 51M7040  | O-RING                   | 2   | 9.300 X 2.200 mm              |  |
| 18  | RE546932 | FITTING                  | 2   |                               |  |
| 19  | RE71255  | PIPE PLUG                | 2   |                               |  |
| 20  | AT13740  | DRAIN VALVE              | 1   |                               |  |
| 21  | RE522991 | ORIFICE                  | 6   |                               |  |
| 22  | .....    | CYLINDER LINER           | 6   | (Order Piston liner Kit)      |  |
| 23  | RE541037 | O-RING KIT               | 6   |                               |  |
| 24  | R527468  | SHIM                     | 6   |                               |  |
| 25  | DZ10083  | PISTON RING              | 1   |                               |  |



| KEY | PART NO. | PART NAME        | QTY | REMARKS                                       |  |
|-----|----------|------------------|-----|---|--|
| 1   | RE565972 | CRANKSHAFT       | 1   | MARKED DZ100385; SUB FOR RE548603 OR RE533517 |  |
| 1   | SE502713 | CRANKSHAFT REMAN | 1   | (With Bearings) REMAN FOR RE565972            |  |
| 2   | R543259  | GEAR             | 1   |   |  |
| 3   | R120752  | KEY              | 1   |   |  |
| 4   | AT107510 | PLUG             | 6   |   |  |
| 5   | 34M7089  | DOWEL PIN        | 1   | 4 X 12 mm                                     |  |
| 6   | 44M7036  | DOWEL PIN        | 1   |   |  |
| 7   | RE529319 | BEARING          | 6   |   |  |
| 8   | RE529320 | THRUST BEARING   | 1   |   |  |



| KEY | PART NO. | PART NAME            | QTY | REMARKS                                  |  |
|-----|----------|----------------------|-----|--|--|
| 1   | DZ10207  | PISTON-LINER KIT     | 6   | PISTON MARKED RE555132; SUB FOR RE542629 |  |
| 2   | DZ10083  | PISTON RING          | 1   | SUB FOR RE539642                         |  |
| 3   | DZ101959 | PISTON PIN           | 6   | SUB FOR R517073                          |  |
| 4   | R519640  | SNAP RING            | 12  |  |  |
| 5   | RE565318 | CONNECTING ROD       | 6   | MARKED DZ100420; SUB FOR RE537877        |  |
| 5   | SE502544 | CONNECTING ROD REMAN | 6   | REMAN FOR RE537877 AND RE565318          |  |
| 6   | R74008   | BUSHING              | 1   |  |  |
| 7   | R542878  | CAP SCREW            | 2   | SUB FOR R501035                          |  |
| 8   | RE538581 | BEARING              | 6   |  |  |



Thank you so much for reading.  
Please click the “Buy Now!”  
button below to download the  
complete manual.



After you pay.

You can download the most  
perfect and complete manual in  
the world immediately.

Our support email:

[ebooklibonline@outlook.com](mailto:ebooklibonline@outlook.com)