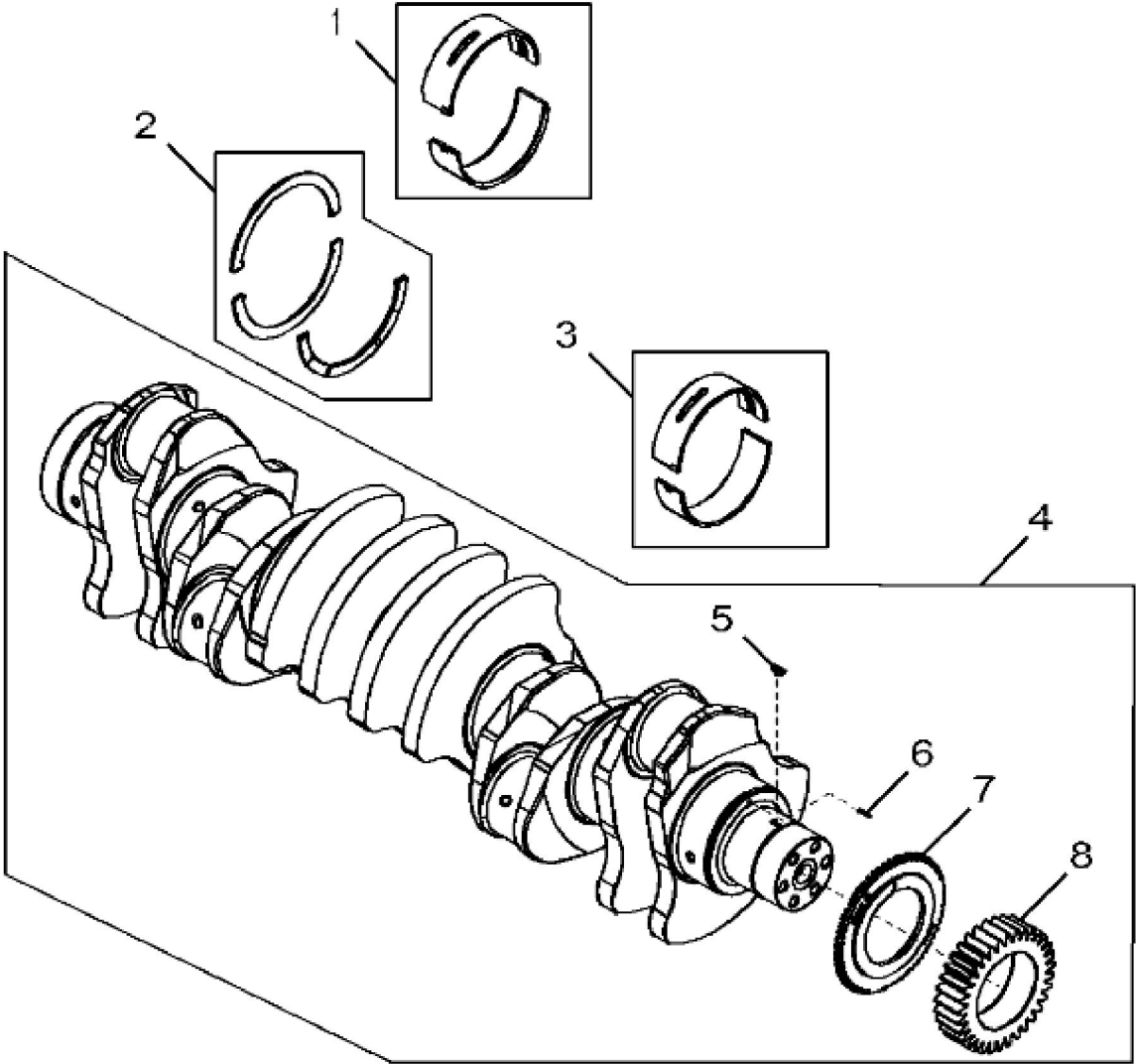
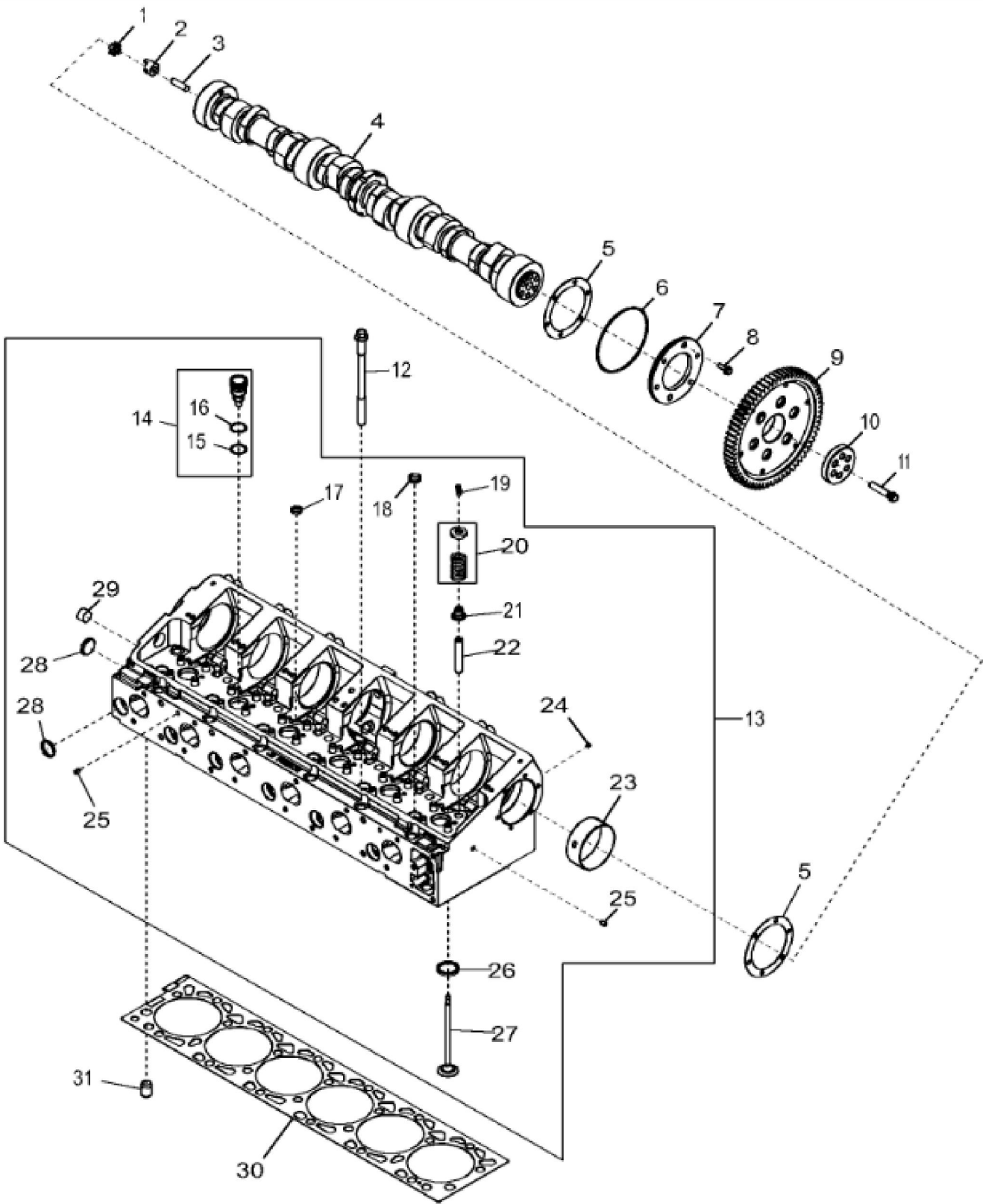


KEY	PART NO.	PART NAME	QTY	Engine Serial No.	REMARKS	
1	CYLINDER LINER	1		ORDER RE530808	
2	RE559262	PISTON-LINER KIT	1		SUB FOR RE530808	
3	RE547712	O-RING KIT	6			
4	CYLINDER BLOCK	1	____-025930	ORDER RE536259; MARKED R524714; USE WITH RE530817 200 mm	
4	CYLINDER BLOCK	1	025931-____	ORDER RE536259; MARKED R524714; USE WITH RE541424 225 mm	
5	T21937	PLUG	2			
6	15H690	PIPE PLUG	1		3/4", SUB FOR RE501736	
7	R502753	PLUG	2			
8	15H685	PIPE PLUG	2		1/4"	
9	AT107509	PLUG	1			
10	R518501	BEARING CAP	6		(Main)	
11	R518579	CAP SCREW	14			
12	R518573	BEARING CAP	1		(Thrust)	
13	R116466	PLUG	1			
14	R535114	SHIM	6			

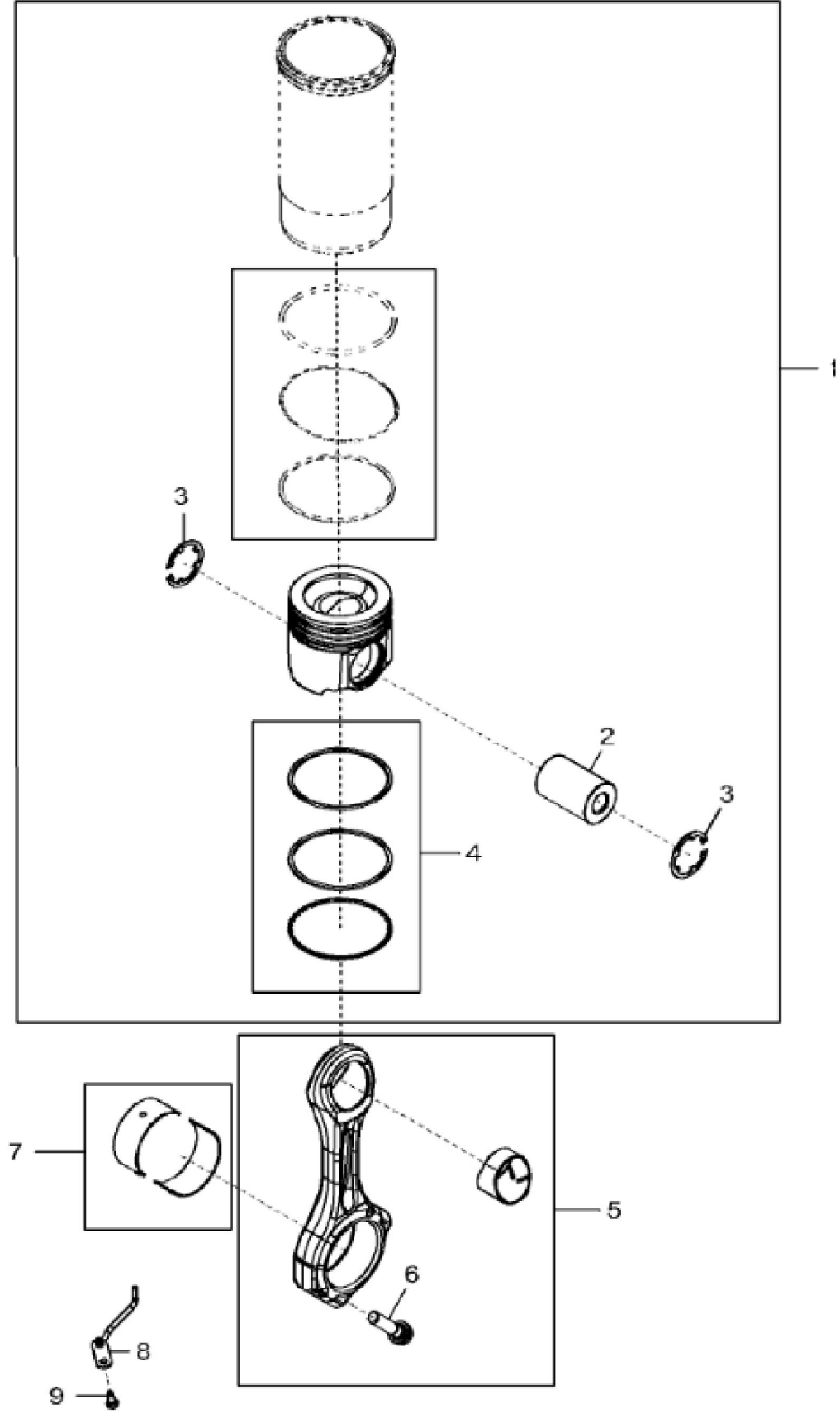


4702_RE524029_PCD

KEY	PART NO.	PART NAME	QTY	REMARKS	
1	RE530786	BEARING KIT	1	MARKED R517069 AND R517070	
2	RE530885	WASHER KIT	1	MARKED R520586	
3	RE530785	BEARING KIT	6	MARKED R517068 AND R517065	
4	RE522871	CRANKSHAFT	1		
4	SE501664	CRANKSHAFT REMAN	1	REMAN FOR RE522871	
5	26M4224	SHAFT KEY	1	4 X 16 mm	
6	34M7129	SPRING PIN	1	3 X 16 mm	
7	R122377	WHEEL SPEED SENSOR	1		
8	R529684	GEAR	1		



KEY	PART NO.	PART NAME	QTY	Engine Serial No.	REMARKS	
1	R545594	SPIDER	1		SUB FOR R502027	
2	R117021	COUPLING	1			
3	R117020	SHAFT	1			
4	R523162	CAMSHAFT	1			
4	SE502274	CAMSHAFT REMAN	1		REMAN FOR R523162	
5	R541154	GASKET	2		SUB FOR R500211	
6	R62976	O-RING	1			
7	R119158	RING	1			
8	19M7867	SCREW	6		M8 X 25	
9	R529655	GEAR	1		SUB FOR R116526	
10	R526517	SPACER	1			
11	R114083	SCREW	6			
12	RE530817	BOLT KIT	1	____-025930	LGTH = 200 mm	
12	RE541424	BOLT KIT	1	025931-____	LGTH = 225 mm	
13	RE542776	CYLINDER HEAD	1		MARKED R525711	
13	SE502698	CYLINDER HEAD REMAN	1		REMAN FOR RE542776	
14	RE531334	SLEEVE	1			
15	T122075	O-RING	1			
16	R516443	O-RING	1			
17	T21937	PLUG	6			
18	N102039	PLUG	6			
19	R520798	RETAINER	48			
20	RE505499	SPRING KIT	24			
21	RE523985	SEAL	24			
22	R517011	SLEEVE	24			
23	R532008	BUSHING	4		SUB FOR R522284	
24	AT107509	PLUG	1			
25	R524857	PLUG	3			
26	R518327	VALVE SEAT INSERT	24			
27	R518328	VALVE	24			
28	M1206T	PLUG	5			
29	15H690	PIPE PLUG	1		3/4"	
30	DZ107052	ENGINE CYLINDER HEAD GASKET	1		SUB FOR RE522278	
31	R116716	BUSHING	2			



Thank you so much for reading.
Please click the “Buy Now!”
button below to download the
complete manual.



After you pay.
You can download the most
perfect and complete manual in
the world immediately.

Our support email:
ebooklibonline@outlook.com