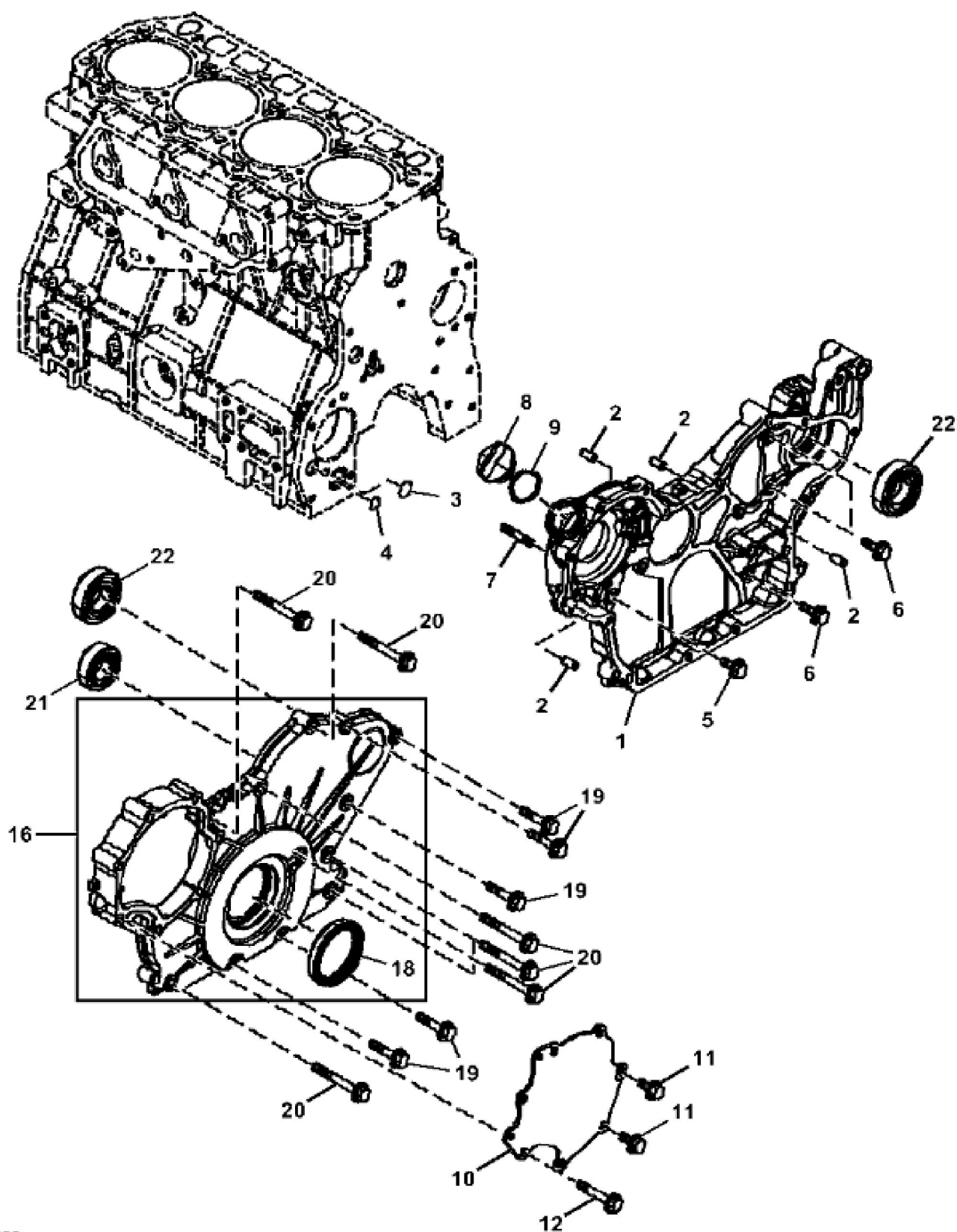


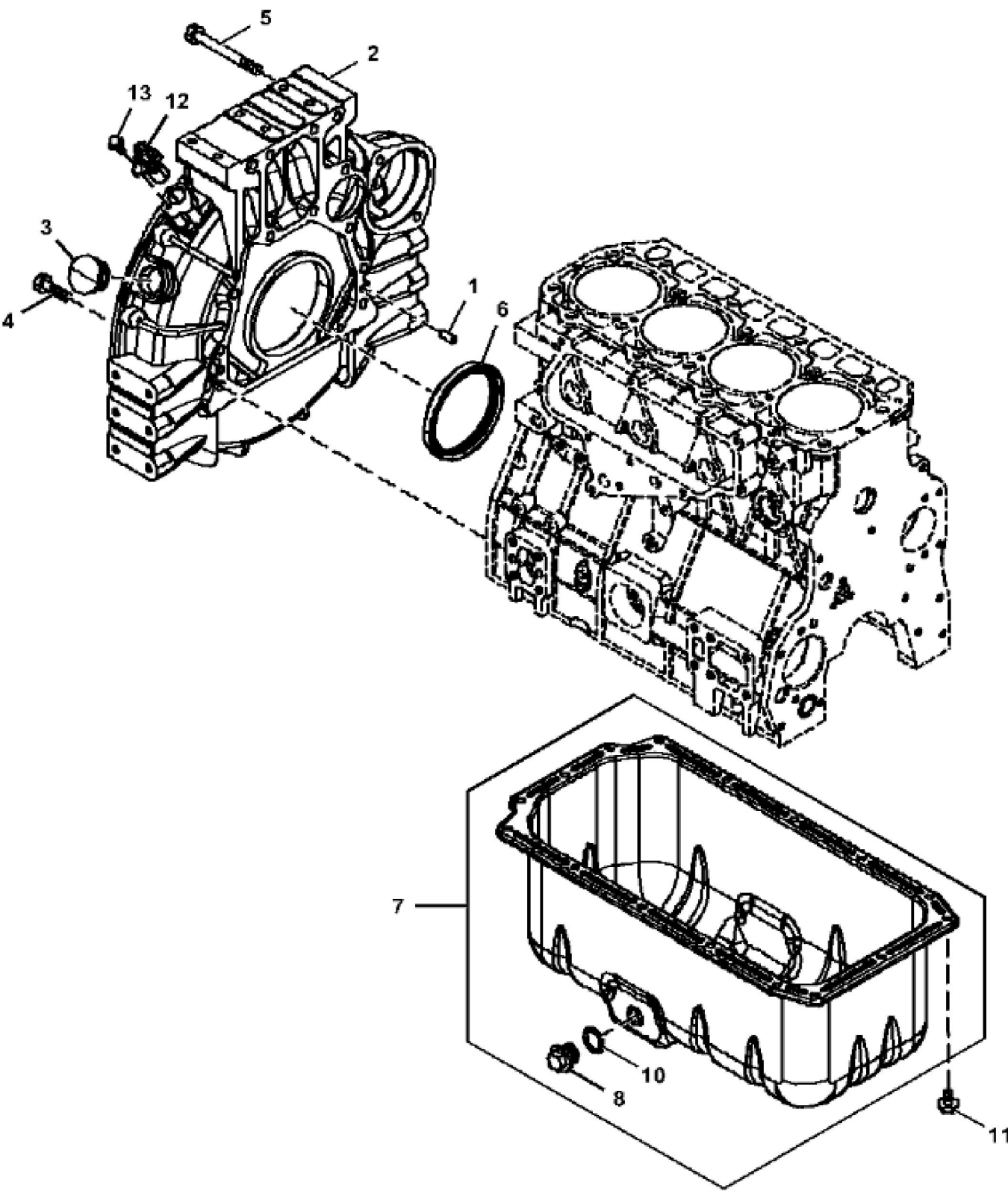
John Deere > Turf And Utility >LOADER, SKID-STEER >332G - LOADER, SKID-STEER >332G Skid Steer Loader (PIN: 1T0332G__F300253-) >04 ENGINE AT436698 >0432 FINISH ASSEMBLY, ENGINE >ST861973 - CYLINDER BLOCK (ENGINE 4TNV94FHT-ETN120177)

| KEY | PART NO. | PART NAME | QTY | REMARKS | |
|-----|-----------|-----------------------------|-----|-----------------|--|
| 1 | MIA884501 | CYLINDER BLOCK | 1 | | |
| 4 | M809594 | PLUG | 1 | | |
| 5 | CH18379 | PLUG | 1 | | |
| 6 | MIU802279 | BOLT | 10 | | |
| 9 | AT211656 | BUSHING | 1 | | |
| 11 | CH18079 | SPRING PIN | 2 | | |
| 12 | M806938 | PLUG | 1 | | |
| 13 | M806938 | PLUG | 1 | | |
| 14 | M806938 | PLUG | 1 | | |
| 18 | MIA880556 | BEARING | 2 | | |
| 18 | MIA880558 | BEARING | 2 | Oversized 0.25 | |
| 21 | MIU802270 | BOLT | 18 | | |
| 22 | MIU802271 | ENGINE CYLINDER HEAD GASKET | 1 | | |
| 23 | M806437 | WASHER | 1 | | |
| 24 | M803787 | BOLT | 1 | | |
| 25 | MIA880548 | BEARING | 5 | | |
| 25 | MIA880547 | BEARING | 5 | Undersized 0.25 | |



John Deere > Turf And Utility >LOADER, SKID-STEER >332G - LOADER, SKID-STEER >332G Skid Steer Loader (PIN: 1T0332G__F300253-) >04 ENGINE AT436698 >0432 FINISH ASSEMBLY, ENGINE >ST861752 - GEAR HOUSING (ENGINE 4TNV94FHT-ETN120177)

| KEY | PART NO. | PART NAME | QTY | REMARKS | |
|-----|-----------|--------------|-----|---------|--|
| 1 | MIU804343 | GEAR CASE | 1 | | |
| 2 | M802255 | PIN | 4 | | |
| 3 | AT211670 | O-RING | 1 | | |
| 4 | AT211671 | O-RING | 1 | | |
| 5 | 19M7865 | SCREW | 1 | M8 X 16 | |
| 6 | CH19139 | BOLT | 3 | | |
| 7 | LVU800577 | STUD | 2 | | |
| 8 | M805710 | CAP | 1 | | |
| 9 | M805711 | PACKING | 1 | | |
| 10 | MIU802278 | COVER | 1 | | |
| 11 | 19M7865 | SCREW | 2 | M8 X 16 | |
| 12 | 19M7800 | SCREW | 5 | M8 X 50 | |
| 16 | MIU802274 | COVER | 1 | | |
| 18 | MIU801096 | SEAL | 1 | | |
| 19 | M89128 | BOLT | 5 | | |
| 20 | CH19100 | BOLT | 7 | | |
| 21 | MIU803787 | BALL BEARING | 1 | | |
| 22 | AT211667 | BALL BEARING | 2 | | |



John Deere > Turf And Utility >LOADER, SKID-STEER >332G - LOADER, SKID-STEER >332G Skid Steer Loader (PIN: 1T0332G__F300253-) >04 ENGINE AT436698 >0432 FINISH ASSEMBLY, ENGINE >ST861698 - FLYWHEEL HOUSING AND OIL SUMP (ENGINE 4TNV94FHT-ETN120177)

| KEY | PART NO. | PART NAME | QTY | REMARKS | |
|-----|-----------|------------|-----|---------|--|
| 1 | M802255 | PIN | 2 | | |
| 2 | MIU802276 | HOUSING | 1 | | |
| 3 | M88659 | PLUG | 1 | | |
| 4 | AT211675 | CAP SCREW | 9 | | |
| 5 | MIU802452 | BOLT | 4 | | |
| 6 | MIU801095 | SEAL | 1 | | |
| 7 | MIA882146 | OIL PAN | 1 | | |
| 8 | M806544 | DRAIN PLUG | 1 | | |
| 10 | M806545 | WASHER | 1 | | |
| 11 | 19M7864 | SCREW | 16 | M8 X 12 | |
| 12 | MIU802254 | SENSOR | 1 | Crank | |
| 13 | CH19140 | BOLT | 1 | | |

Thank you so much for reading.
Please click the “Buy Now!”
button below to download the
complete manual.



After you pay.

You can download the most
perfect and complete manual in
the world immediately.

Our support email:

ebooklibonline@outlook.com