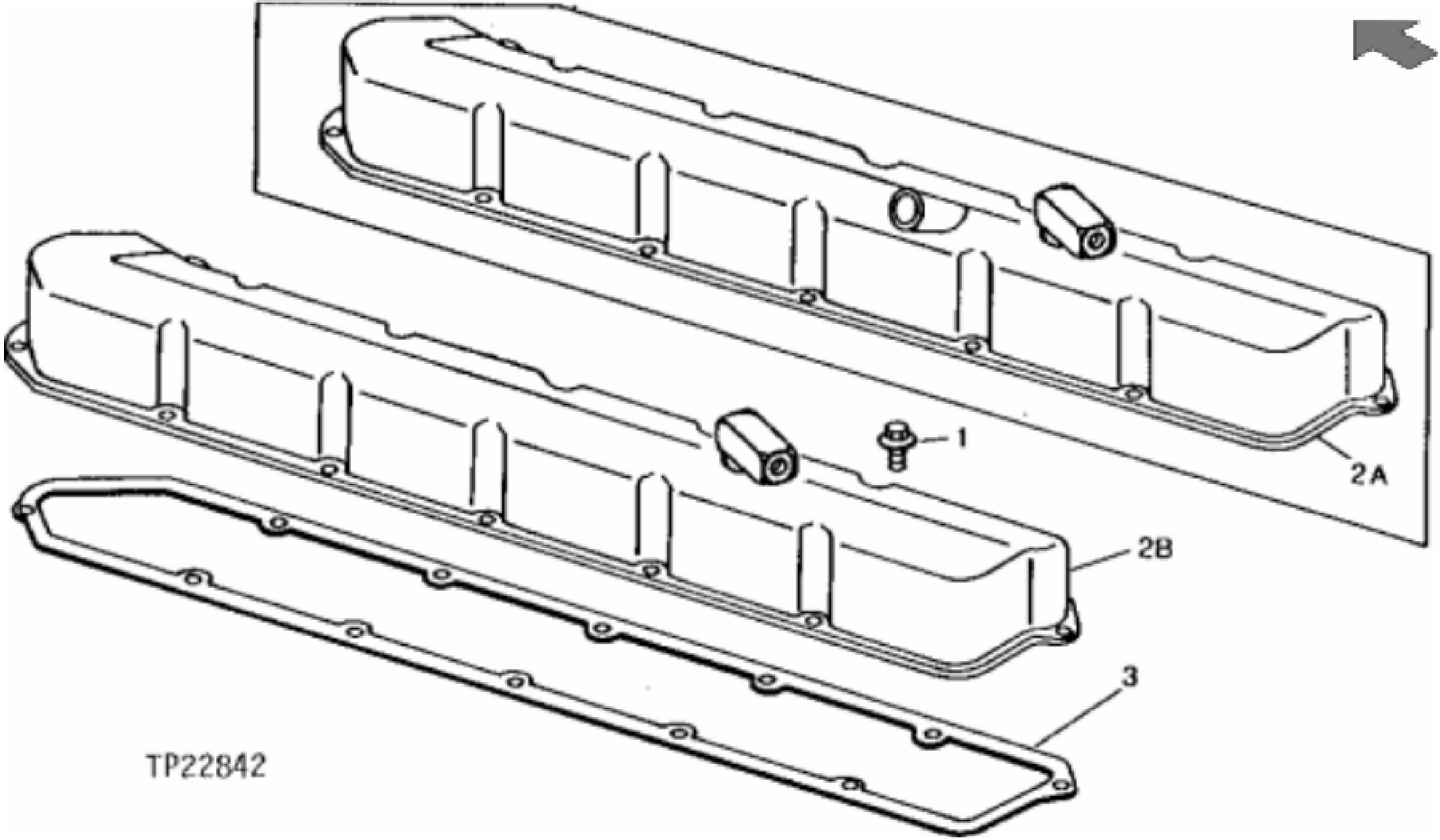
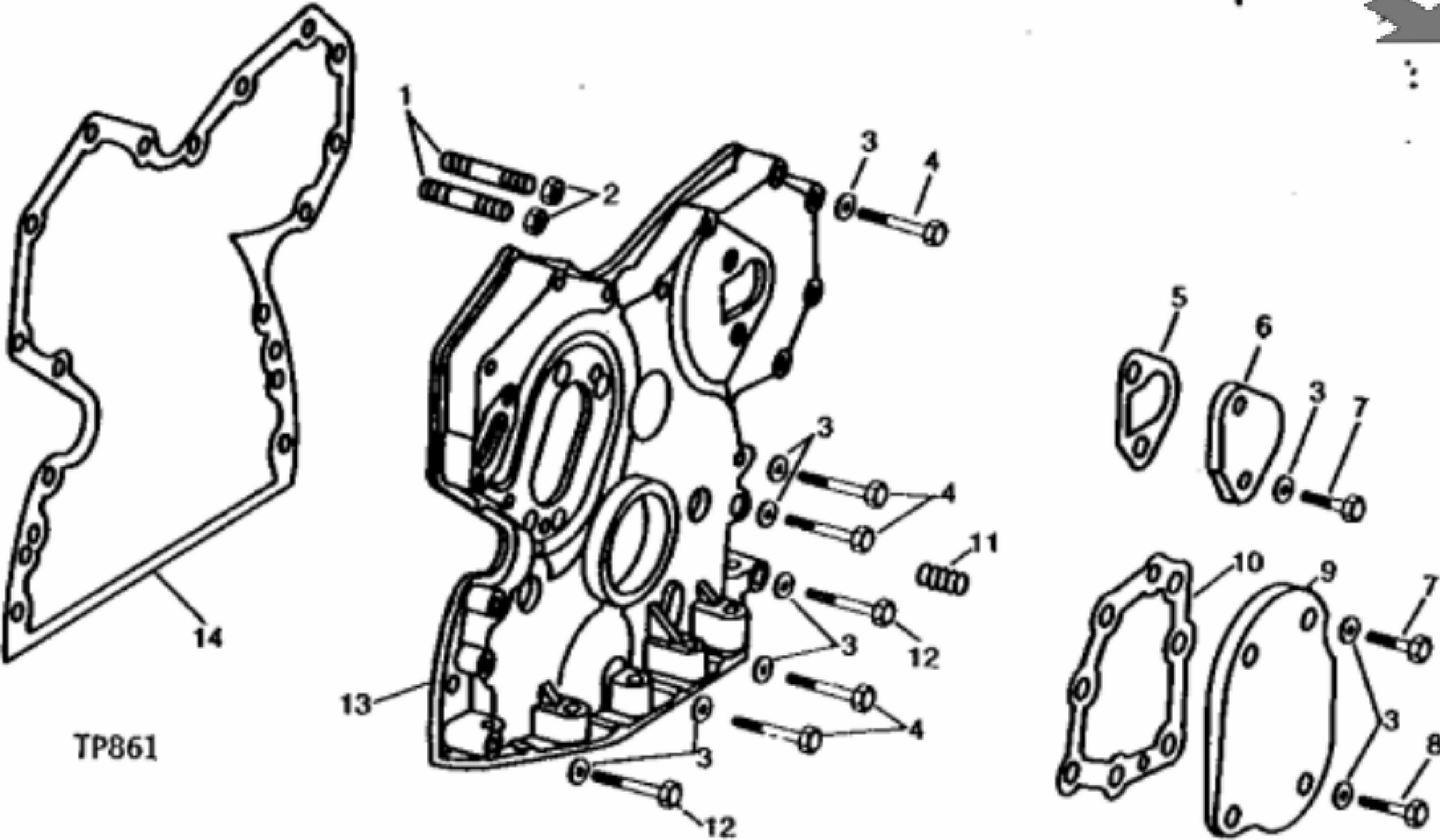


John Deere > Construction And Forestry > BACKHOE, LOADER > 710C - BACKHOE, LOADER > 710B and 710C Backhoe Loaders > 4 ENGINE 4 > CAMSHAFT AND VALVE ACTUATING MEANS 0402 > 0402-4 -
ROCKER ARM COVER (ENGINE SERIAL NO. 607130-621172) (MANUFACTURED 1983-1983) (710B WITH 6329 ENGINE) (ENGINE SERIAL NO. 100001-143929) (MANUFACTURED 1983-1986) (710B WITH
6329 ENGINE) (ENGINE SERIAL NO. 143930-299999) (MANUFACTURED 1986-1989) (710B AND [02B24]



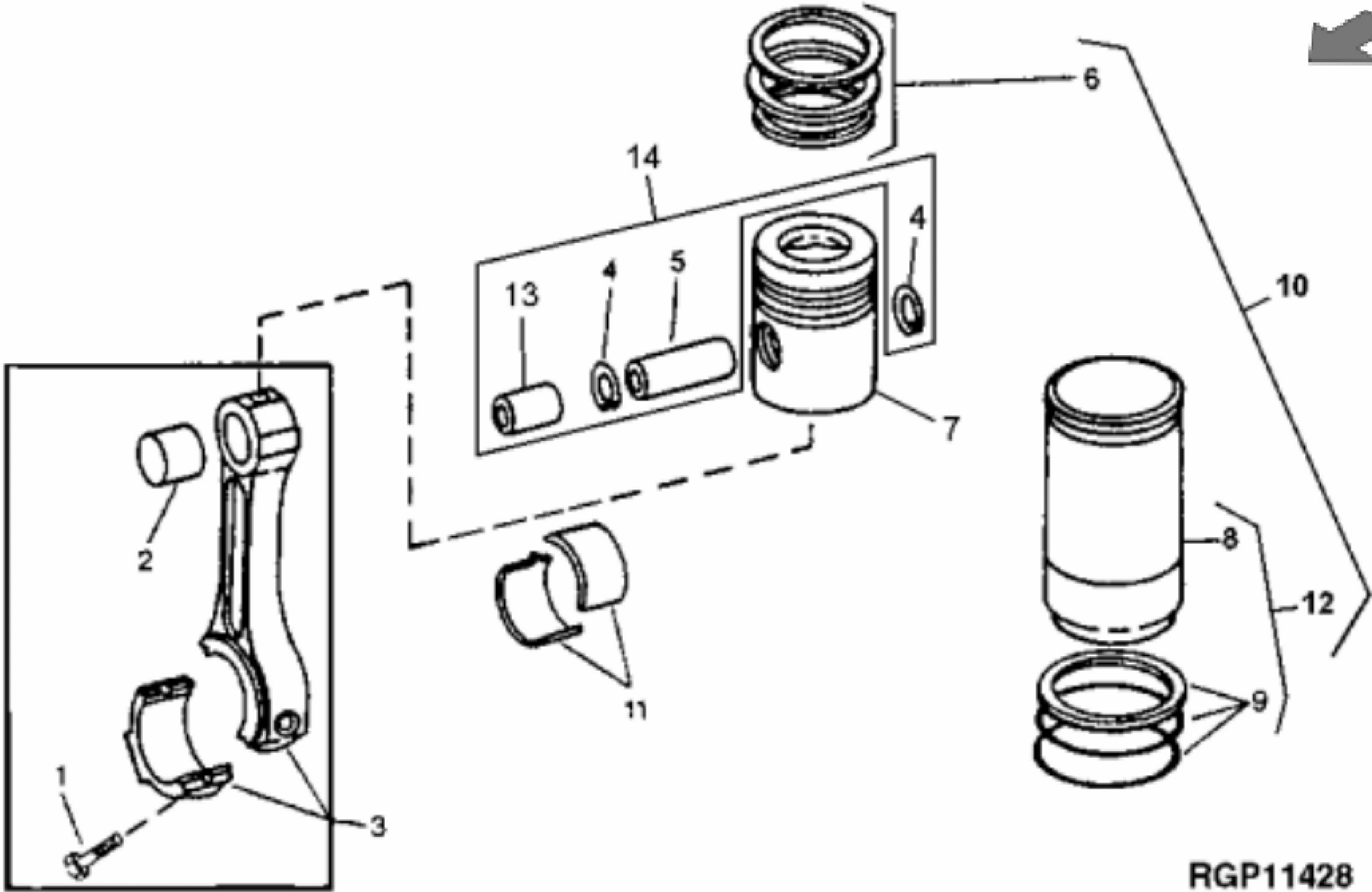
John Deere > Construction And Forestry >BACKHOE, LOADER >710C - BACKHOE, LOADER >710B and 710C Backhoe Loaders >4 ENGINE 4 >CAMSHAFT AND VALVE ACTUATING MEANS 0402 >0402-4 -
ROCKER ARM COVER (ENGINE SERIAL NO. 607130-621172) (MANUFACTURED 1983-1983) (710B WITH 6329 ENGINE) (ENGINE SERIAL NO. 100001-143929) (MANUFACTURED 1983-1986) (710B WITH
6329 ENGINE) (ENGINE SERIAL NO. 143930-299999) (MANUFACTURED 1986-1989) (710B AND [02B24]

KEY	PART NO.	PART NAME	QTY	Engine Serial No.	710B	710C	REMARKS	
1	AR103811	SCREW WITH WASHER	12		X	X	(SUB FOR AR100124)	
2A	AR76787	COVER	1	____-120442	X			
2B	AR71698	COVER	1	120443-____	X	X		
3	R75728	GASKET	1		X	X	(SUB FOR AR102260)	



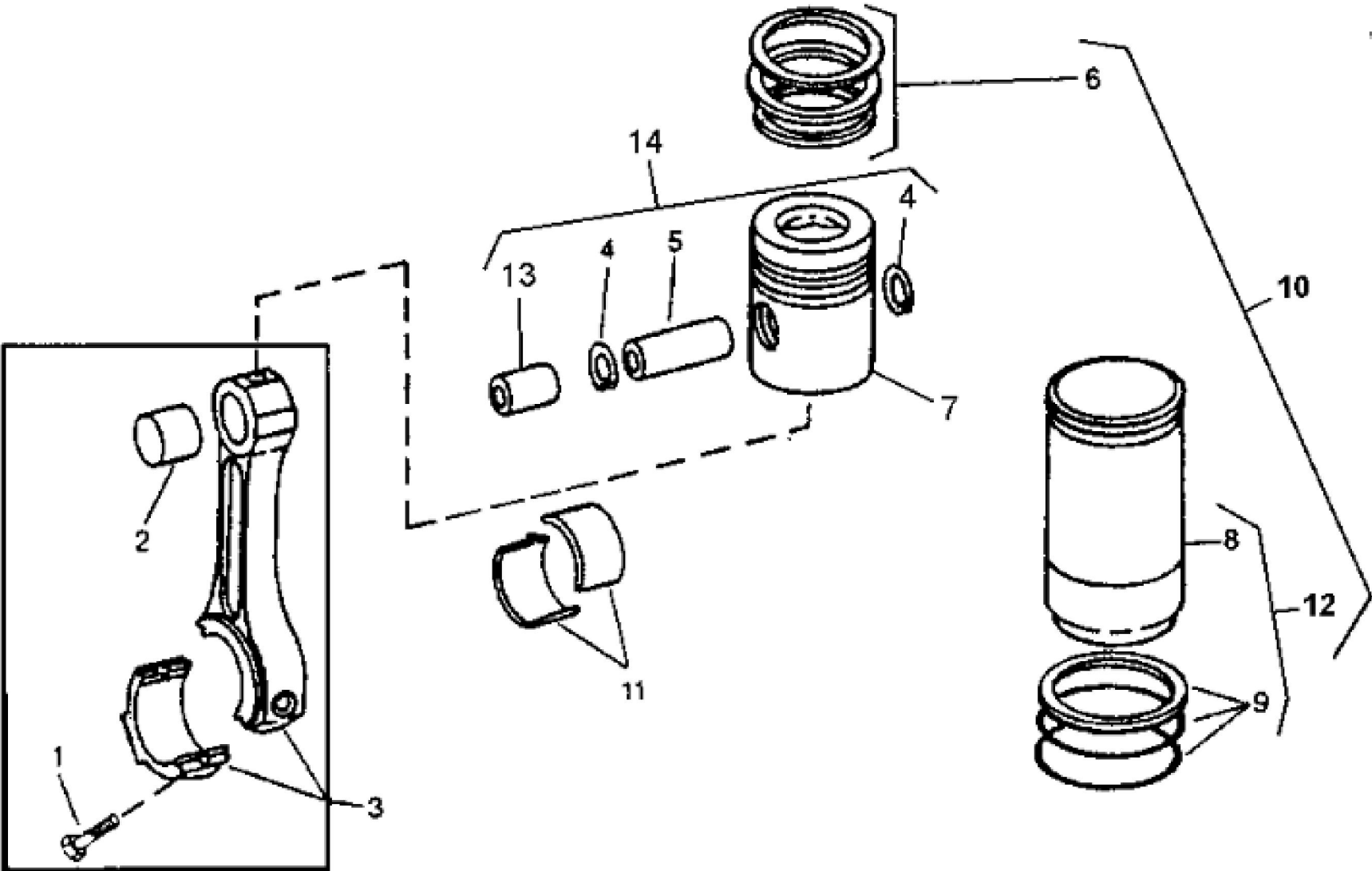
TP861

KEY	PART NO.	PART NAME	QTY	710B	REMARKS	
1	R122226	STUD	2	X	(SUB FOR R122226)	
2	12H304	LOCK WASHER	2	X	3/8"	
2	14H812	NUT	2	X	3/8"	
3	24H1304	WASHER	AR	X	13/32" X 23/32" X 0.120"	
4	19H2549	CAP SCREW	10	X	3/8" X 1-7/8"	
5	R78366	GASKET	1	X	(SUB FOR R69260)	
6	R126041	COVER	1	X	(SUB FOR T20362)	
7	19H2284	CAP SCREW	3	X	3/8" X 7/8"	
7	R124277	CAP SCREW	2	X	(USE WITH R126041) (SUB FOR R122618, THIS APPLICATION)	
8	19H1726	CAP SCREW	1	X	3/8" X 2-1/4"	
9	T20272	COVER	1	X		
10	T20273	GASKET	1	X		
11	15H275	PIPE PLUG	1	X	1/4"	
12	19H3031	CAP SCREW	2	X	3/8" X 2-1/2"	
13	AR58196	COVER	1	X	(MARKED R52880) (ALSO ORDER T20272, T20273, 15H275, 19H1726, (3) 19H2284 AND (4) 24H1304) (SUB RE39252)	
14	T20155	GASKET	1	X		



RGP11428

KEY	PART NO.	PART NAME	QTY	710B	REMARKS	
1	R74194	SCREW	12	X	(USE WITH AR55978)	
1	R80033	CAP SCREW	12	X	(USE WITH RE16495 OR RE21076)	
2	R55647	BUSHING	6	X		
3	SE500747	CONNECTING ROD	6	X	(SUB FOR AR55978, RE16495 OR RE21076) (REMANUFACTURED)	
4	M41029	SNAP RING	12	X		
5	R125754	PISTON PIN	6	X	(SUB FOR R51731)	
6	AR55759	PISTON RING KIT	6	X		
7	AR77762	PISTON	6	X		
8	T32343	CYLINDER LINER	6	X		
9	AR71618	KIT	6	X		
10	AR78041	PISTON-LINER KIT	6	X		
11	AT21138	BEARING	6	X	STANDARD (SET OF (2) T20011)	
11	BEARING	6	X	(AT21122 NO LONGER AVAILABLE) 0.05 MM (.002") UNDERSIZE (SET OF (2) T23566)	
11	AT21124	BEARING	6	X	0.25 MM (.010") UNDERSIZE (SET OF (2) T23568)	
11	AT21126	BEARING	6	X	0.51 MM (.020") UNDERSIZE (SET OF (2) T23570)	
11	AT21128	BEARING	6	X	0.76 MM (.030") UNDERSIZE (SET OF (2) T23572)	



Thank you so much for reading.
Please click the “Buy Now!”
button below to download the
complete manual.



After you pay.

You can download the most
perfect and complete manual in
the world immediately.

Our support email:

ebooklibonline@outlook.com