

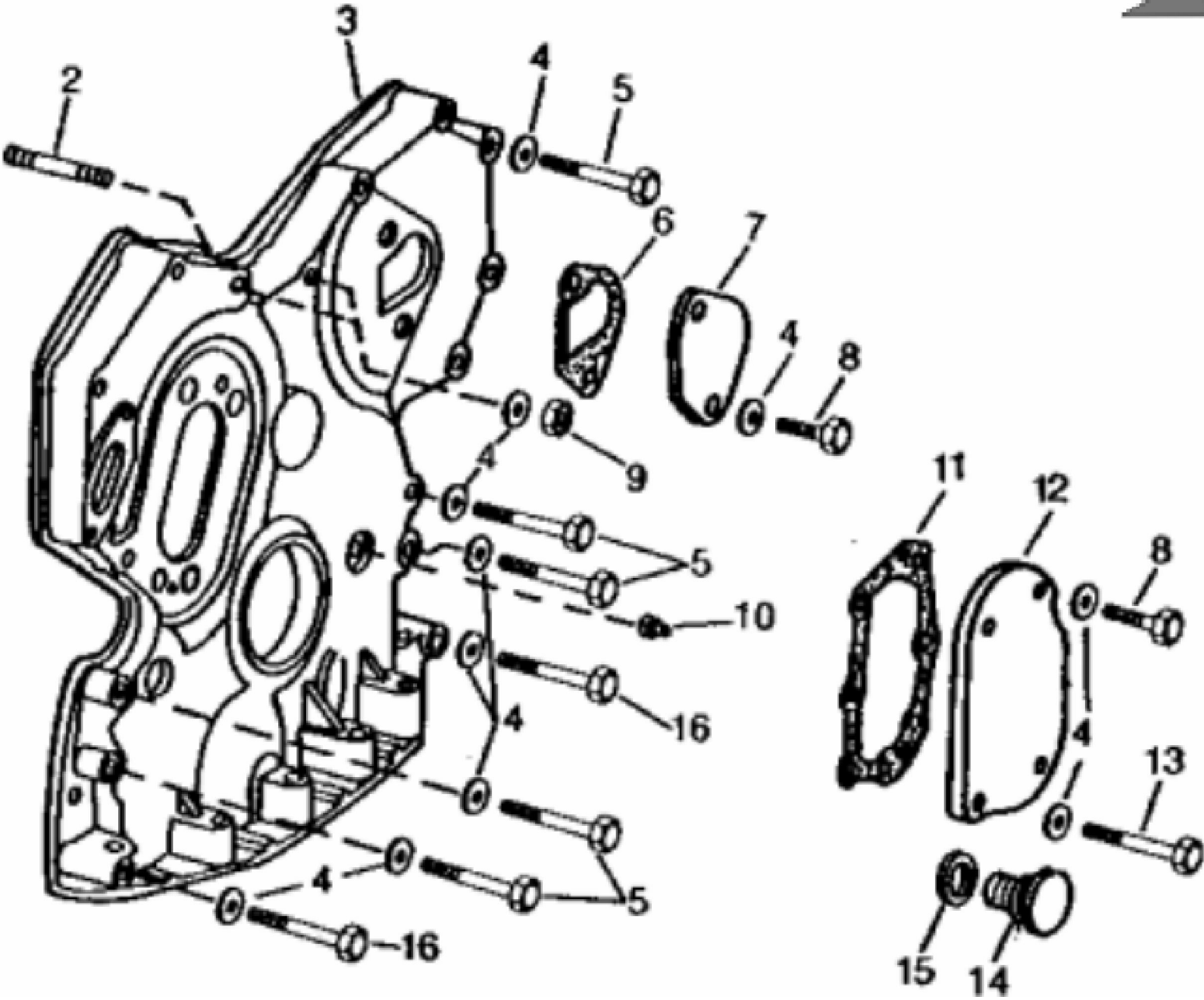
TP3697

John Deere > Construction And Forestry >BACKHOE, LOADER >610B - BACKHOE, LOADER >610B Backhoe Loader >4 ENGINE 4 >CAMSHAFT AND VALVE ACTUATING MEANS 0402 >0402-4 - ROCKER ARM COVER [01F09]

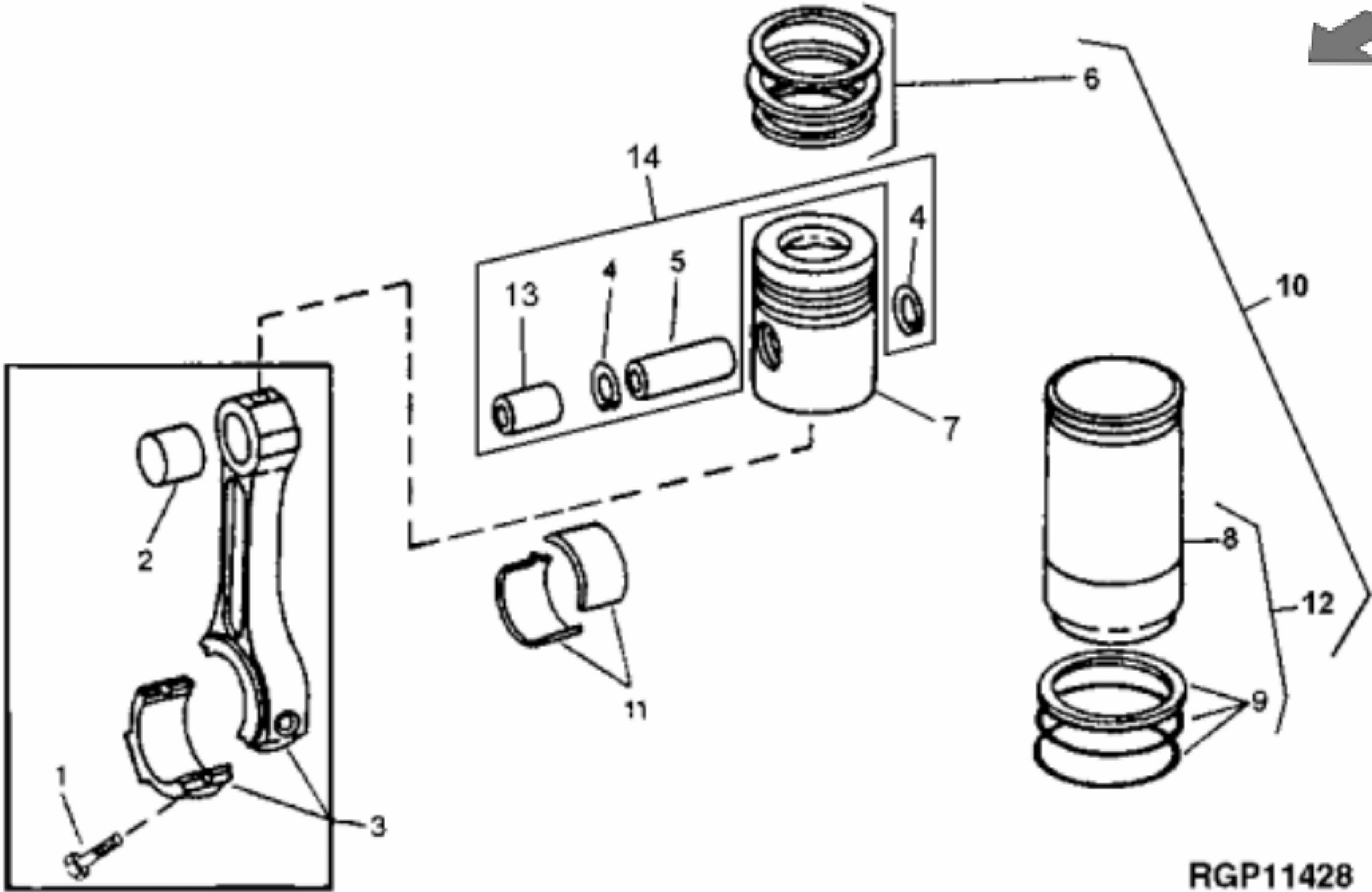
KEY	PART NO.	PART NAME	QTY	REMARKS	
1	AR103811	SCREW WITH WASHER	8	(SUB FOR AR100124)	
2	AR73604	COVER	1		
3	AR100596	GASKET	1		



TP1523

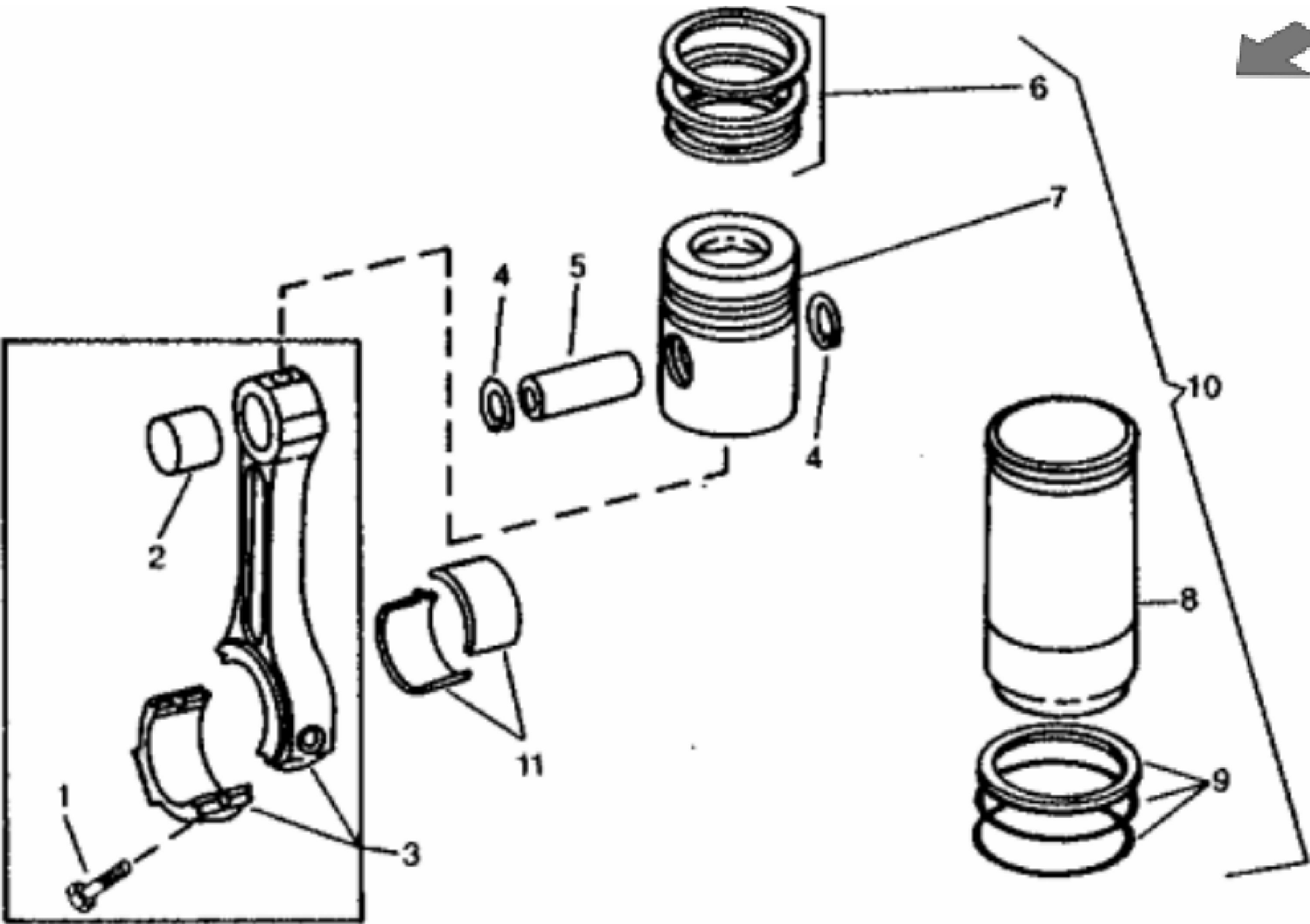


KEY	PART NO.	PART NAME	QTY	REMARKS	
1	T20155	GASKET	1		
2	R122226	STUD	2	(SUB FOR R122226)	
3	AR58196	COVER	1	(MARKED R52880) (ALSO ORDER T20272, T20273, 15H275, 19H1726, (3) 19H2284, (4) 24H1304)	
4	24H1304	WASHER	AR	13/32" X 23/32" X 0.120"	
5	19H2549	CAP SCREW	10	3/8" X 1-7/8"	
6	R78366	GASKET	1		
7	R126041	COVER	1	(SUB FOR T20362)	
8	R124277	CAP SCREW	3	(SUB FOR R122618, THIS APPLICATION)	
9	14H812	NUT	2	3/8"	
10	15H275	PIPE PLUG	1	1/4"	
11	T20273	GASKET	1		
12	T20272	COVER	1		
13	19H1726	CAP SCREW	1	3/8" X 2-1/4"	
14	T27657	FITTING PLUG	1		
15	A4827R	WASHER	1		
16	19H3031	CAP SCREW	2	3/8" X 2-1/2"	



RGP11428

KEY	PART NO.	PART NAME	QTY	REMARKS	
1	R74195	SCREW	8		
2	BUSHING	4	(R56186 NO LONGER AVAILABLE)	
3	SE500746	CONNECTING ROD	4	(SUB FOR AR66400 AND RE53716) (REMANUFACTURED)	
4	R54114	SNAP RING	8		
5	PIN	4	(R124230 NO LONGER AVAILABLE,FURNISH RE63913)	
6	RE66820	PISTON RING KIT	4	(SUB FOR RE15674 AND RE48818)	
7	PISTON	4	(FURNISH RE19833)	
8	R121867	CYLINDER LINER	4	(SUB FOR R54505 OR R80500) (SUB RE500024)	
9	AR65507	O-RING KIT	4		
9	R26121	O-RING	1	CYLINDER LINER	
9	R48767	PACKING	1	CYLINDER LINER, UPPER	
9	R55453	O-RING	1	CYLINDER LINER, LOWER	
10	RE19833	KIT	4	(SUB FOR AR71597, RE16615 AND RE19832)	
11	AR69098	BEARING	4	STANDARD (SET OF (2) R54801) (SUB AR97517)	
11	BEARING	4	(AR68413 NO LONGER AVAILABLE) 0.05 MM (.002") UNDERSIZE (SET OF (2) R57123)	
11	AR68414	BEARING	4	0.25 MM (.010") UNDERSIZE (SET OF (2) R57124) (SUB AR97653)	
11	AR68415	BEARING	4	0.51 MM (.020") UNDERSIZE (SET OF (2) R57125) (SUB AR97654)	
11	AR68416	BEARING	4	0.76 MM (.030") UNDERSIZE (SET OF (2) R57126) (SUB AR97655)	
12	RE500024	CYLINDER LINER	4		
13	BUSHING	4		
14	RE63913	KIT	4		



Thank you so much for reading.
Please click the “Buy Now!”
button below to download the
complete manual.



After you pay.

You can download the most
perfect and complete manual in
the world immediately.

Our support email:

ebooklibonline@outlook.com