

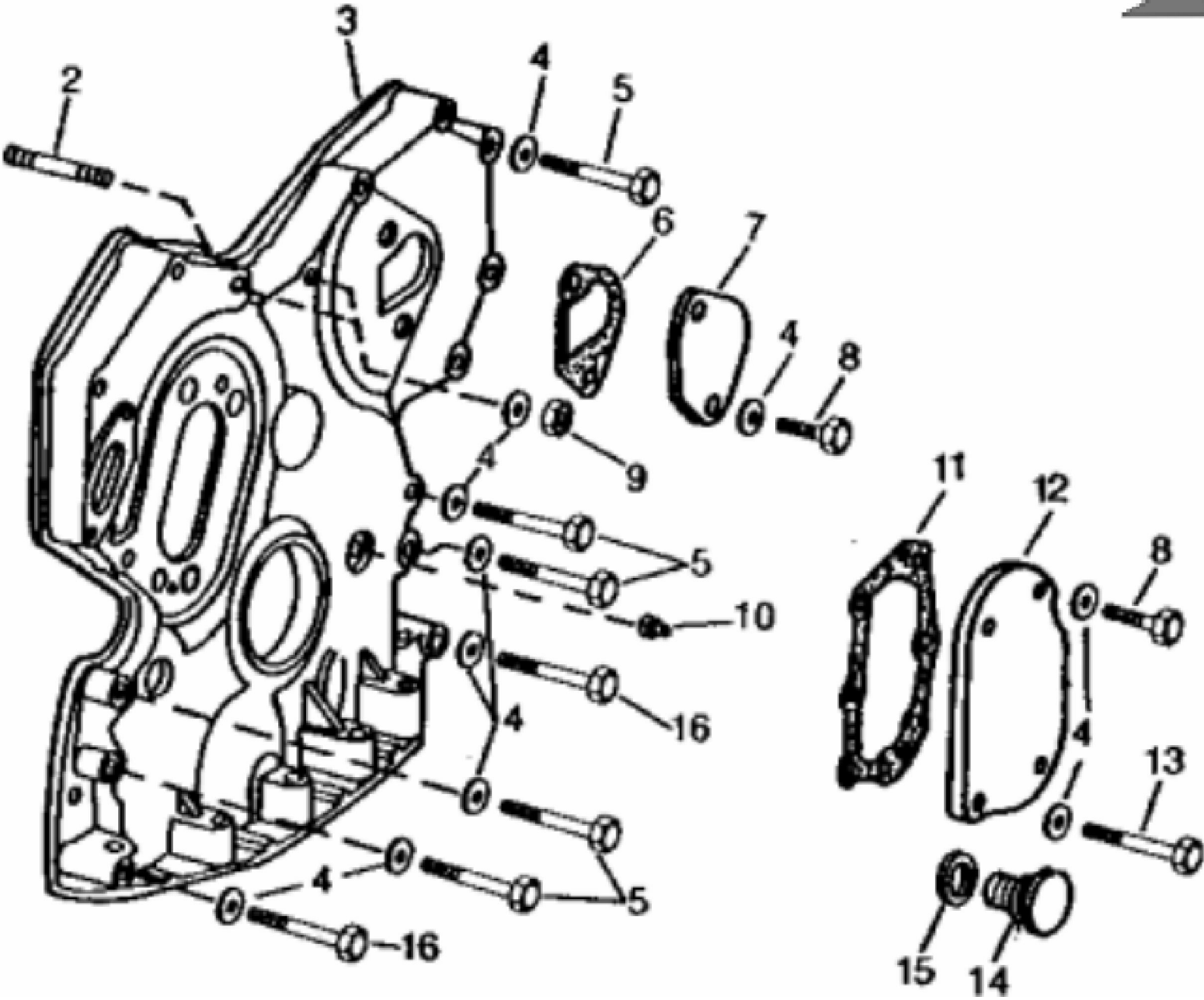
TP3697

John Deere > Construction And Forestry >BACKHOE, LOADER >610C - BACKHOE, LOADER >410C, 510C and 610C Backhoe Loaders >4 ENGINE 4 >CAMSHAFT AND VALVE ACTUATING MEANS 0402
>0402-4 - ROCKER ARM COVER [02B17]

KEY	PART NO.	PART NAME	QTY	410C	510C	610C	REMARKS	
1	AR103811	SCREW WITH WASHER	8	X	X	X	(SUB FOR AR100124)	
2	AR73604	COVER	1	X	X	X		
3	AR100596	GASKET	1	X	X	X		

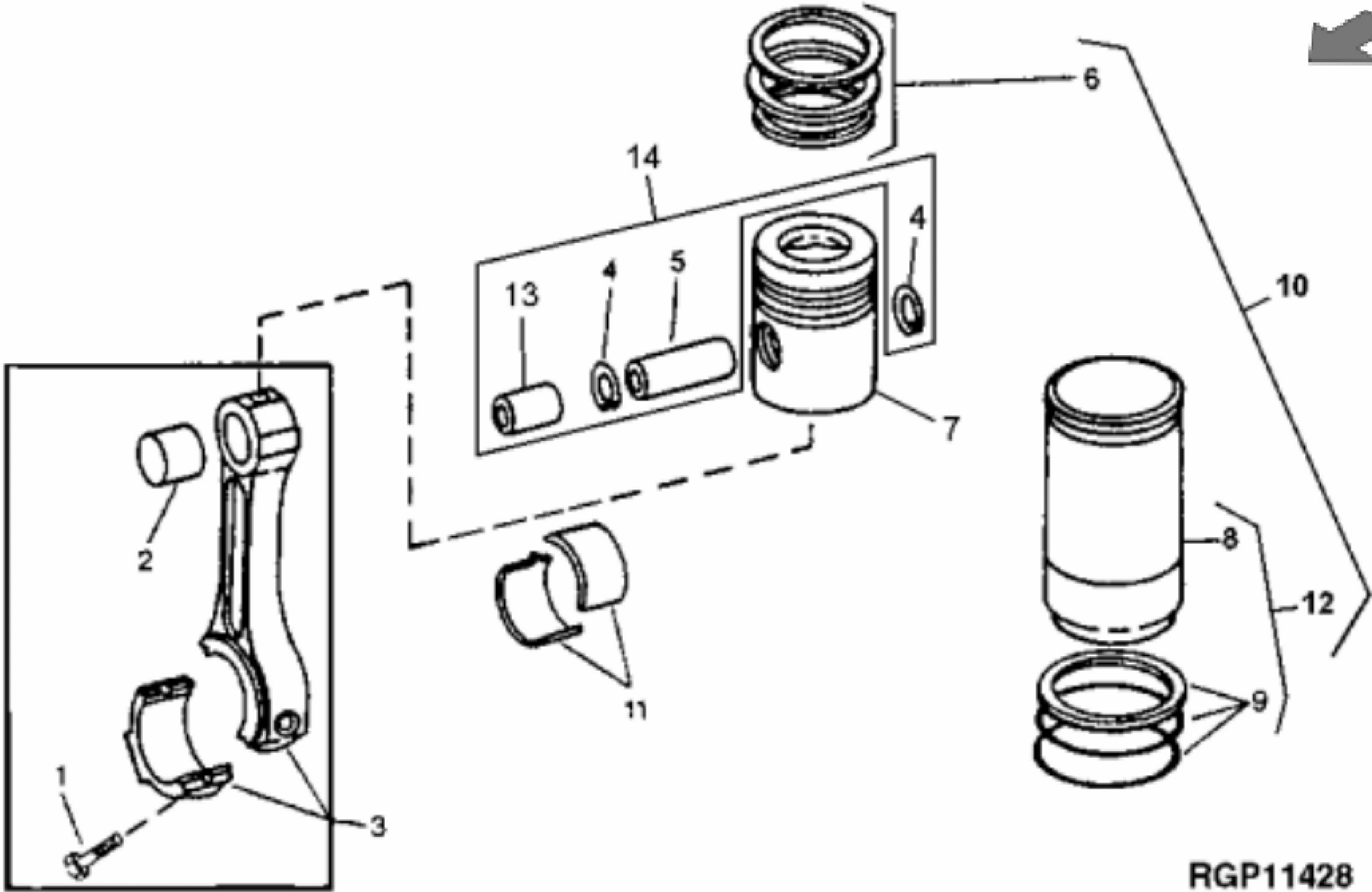


TP1523



John Deere > Construction And Forestry >BACKHOE, LOADER >610C - BACKHOE, LOADER >410C, 510C and 610C Backhoe Loaders >4 ENGINE 4 >CAMSHAFT AND VALVE ACTUATING MEANS 0402 >0402-5 - TIMING GEAR COVER [02B18]

KEY	PART NO.	PART NAME	QTY	410C	510C	610C	REMARKS	
1	T20155	GASKET	1	X	X	X		
2	R122226	STUD	2	X	X	X	(SUB FOR R122226)	
3	AR58196	COVER	1	X	X	X	(MARKED R52880) (ALSO ORDER T20272, T20273, 15H275, 19H1726, (3) 19H2284, (4) 24H1304)	
4	24H1304	WASHER	AR	X	X	X	13/32" X 23/32" X 0.120"	
5	19H3065	CAP SCREW	10	X	X	X	3/8" X 2"	
6	R78366	GASKET	1	X	X	X		
7	R126041	COVER	1	X	X	X	(SUB FOR T20362)	
8	19H2284	CAP SCREW	3	X	X	X	3/8" X 7/8"	
8	R124277	CAP SCREW	2	X	X	X	(USE WITH R126041) (SUB FOR R122618, THIS APPLICATION)	
9	12H304	LOCK WASHER	2	X	X	X	3/8"	
9	14H812	NUT	2	X	X	X	3/8"	
10	15H275	PIPE PLUG	1	X	X	X	1/4"	
11	T20273	GASKET	1	X	X	X		
12	T20272	COVER	1	X	X	X		
13	19H1726	CAP SCREW	1	X	X	X	3/8" X 2-1/4"	
14	T27657	FITTING PLUG	1	X	X	X		
15	A4827R	WASHER	1	X	X	X		
16	19H3031	CAP SCREW	2	X	X	X	3/8" X 2-1/2"	



RGP11428

KEY	PART NO.	PART NAME	QTY	Serial No.	410C	510C	610C	REMARKS	
1	R74195	SCREW	8		X	X	X		
2	BUSHING	4		X	X	X	(R56186 NO LONGER AVAILABLE)	
3	RE53716	CONNECTING ROD	4		X	X	X	(MARKED R116851) (SUB FOR AR66400) (MARKED R56187)	
4	R54114	SNAP RING	8		X	X	X		
5	PIN	4		X	X	X		
6	RE507852	PISTON RING KIT	4		X	X	X	(SUB FOR (4) RE15674, RE48818, RE66820)	
7	PISTON	4	____-177225		X	X	(CHECK PISTON RING HEIGHT WHEN REPLACING INDIVIDUAL PISTONS. MAY HAVE BEEN UPDATED BY PREVIOUS OVERHAUL) (FURNISH RE19833)	
7	PISTON	4	177226-____		X	X	(FURNISH RE53073)	
7	AR68188	PISTON	4	____-178961	X			(CHECK PISTON RING HEIGHT WHEN REPLACING INDIVIDUAL PISTONS. MAY HAVE BEEN UPDATED BY PREVIOUS OVERHAUL)	
7	PISTON	4	178962-____	X			(FURNISH RE28966)	
8	R121867	CYLINDER LINER	4		X	X	X	(SUB RE500024)	
9	AR65507	O-RING KIT	4		X	X	X		
10	RE19833	KIT	4	____-178961	X				
10	RE28966	KIT	4	178962-____	X				
10	RE19832	KIT	4	____-177225		X	X		
10	RE53073	PISTON-LINER KIT	4	177226-____		X	X	(SUB FOR RE28977)	
11	AR97517	BEARING	4		X	X	X	STANDARD (SET OF (2) R72745)	
11	BEARING	4		X	X	X	(AR97652 NO LONGER AVAILABLE) 0.05 MM (.002") UNDERSIZE (SET OF (2) R73595)	
11	AR97653	BEARING	4		X	X	X	0.25 MM (.010") UNDERSIZE (SET OF (2) R73596)	
11	AR97654	BEARING	4		X	X	X	0.51 MM (.020") UNDERSIZE (SET OF (2) R73597)	
11	AR97655	BEARING	4		X	X	X	0.76 MM (.030") UNDERSIZE (SET OF (2) R73598)	
12	RE500024	CYLINDER LINER	4		X	X	X		

Thank you so much for reading.
Please click the “Buy Now!”
button below to download the
complete manual.



After you pay.

You can download the most
perfect and complete manual in
the world immediately.

Our support email:

ebooklibonline@outlook.com