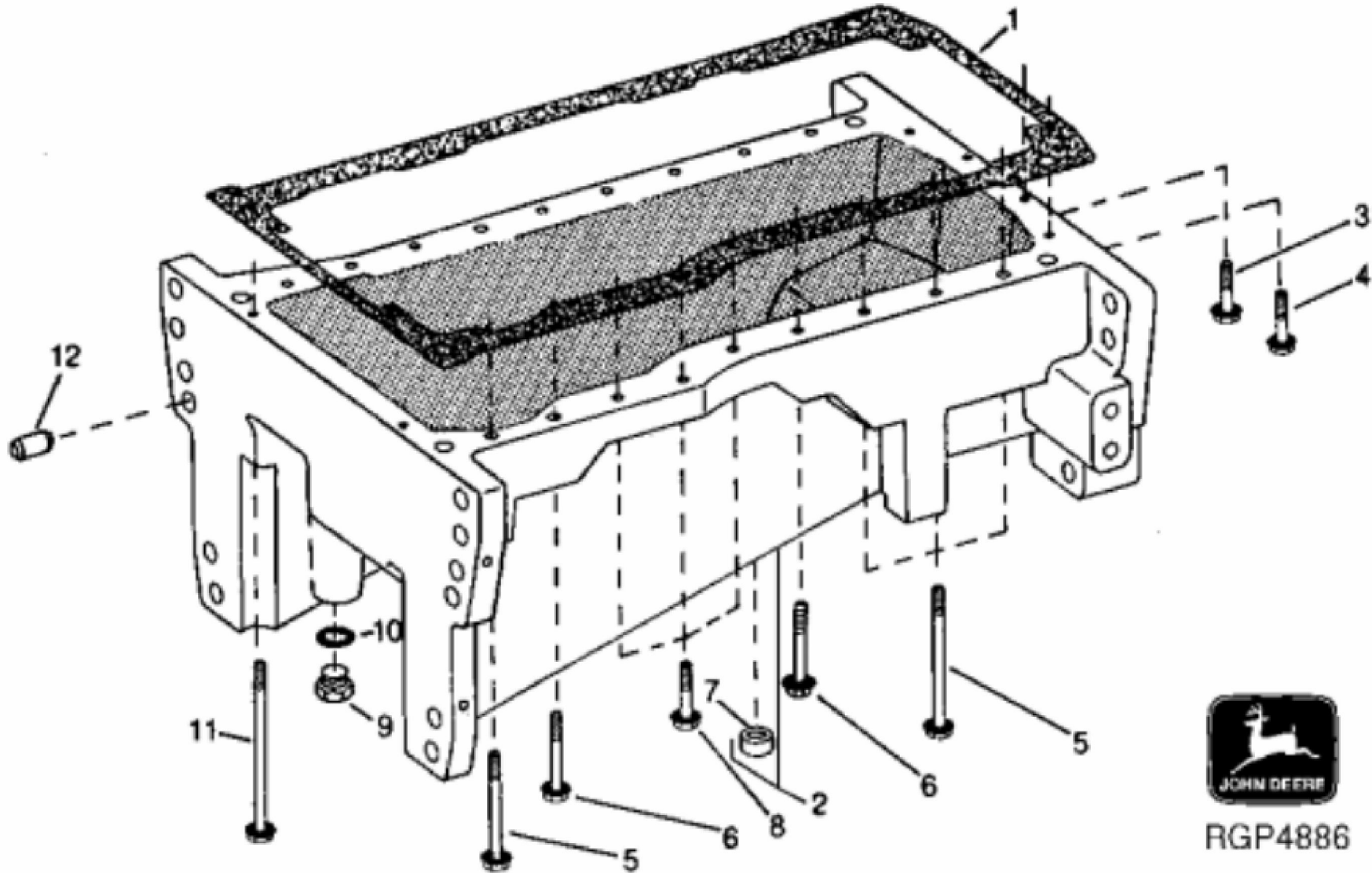
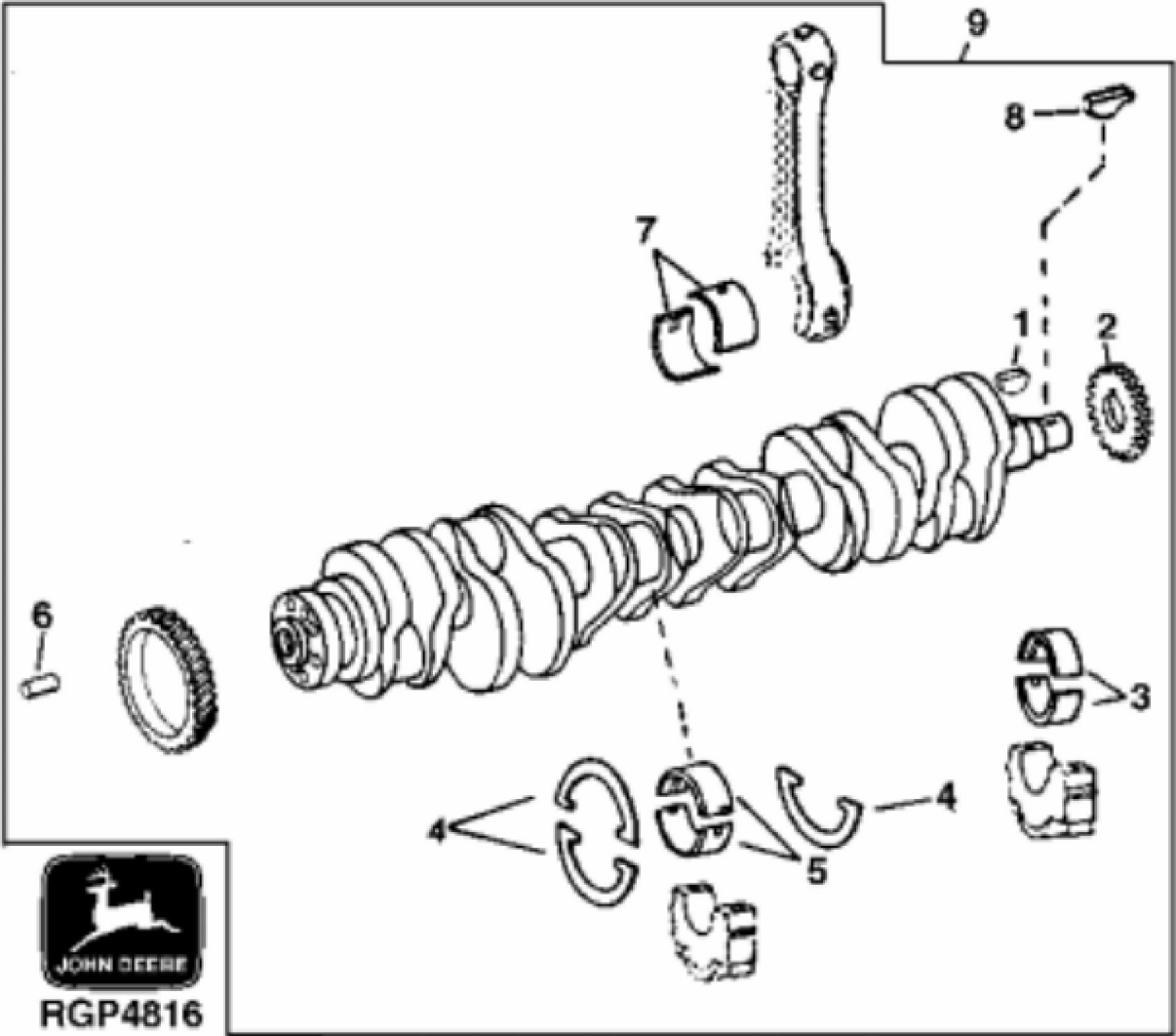


KEY	PART NO.	PART NAME	QTY	Engine Serial No.	REMARKS	
1	R43409	PLUG	2			
2	R515224	STUD	5		(FUEL INJECTION PUMP) (SUB FOR R114130)	
3	.....	DIPSTICK TUBE	1		141.5 MM (5.57")	
4	AT13740	DRAIN VALVE	1			
5	R36599	PLUG	3			
5	RE57836	PIPE PLUG	1		12.700 mm (1/2")	
6	R39741	DRAIN PLUG	1			
7	U13639	O-RING	1		37.465 X 2.997 mm (1.475" X 0.118")	
8	15H690	PIPE PLUG	1		3/4"	
8	RE71255	PIPE PLUG	1		3.175 mm (1/8"), (SUB FOR R104592, THIS APPLICATION)	
9	R42340	BUSHING	2			
10	R1612R	DOWEL PIN	2			
11	F1743R	DOWEL PIN	2			
12	RE71255	PIPE PLUG	6		3.175 mm (1/8")	
12	RE71255	PIPE PLUG	1		3.175 mm (1/8"), (SUB FOR R104592, THIS APPLICATION)	
13	R43621	ORIFICE	6		(AUXILIARY DRIVE IDLER HOLE)	
14	T35390	PLUG	1			
15	R500642	BUSHING	2		(SUB FOR R62930, THIS APPLICATION)	
16	A4365R	O-RING	1			
17	DZ104494	PLUG	1		SUB FOR AR61589	
18	R27149	O-RING	1			
19	AR61533	PLUG	1			
20	R122364	BOLT	14		(SUB R519287)	
21	R120953	BEARING CAP	6		(MAIN)	
21	R120954	BEARING CAP	1		(THRUST)	
22	R82007	PLUG	1			
23	R87561	BUSHING	4			
24	R61288	DOWEL PIN	1			
25	15H686	PIPE PLUG	1		1"	
26	R501255	PLUG	1	XXXXXX-____	(AUXILIARY DRIVE IDLER HOLE) (1.27"), (NOT AS SHOWN) (FROST PLUG)	
26	R128670	CAP SCREW	1	____-XXXXXX	(AUXILIARY DRIVE IDLER HOLE) (USE WITH B2762R)	

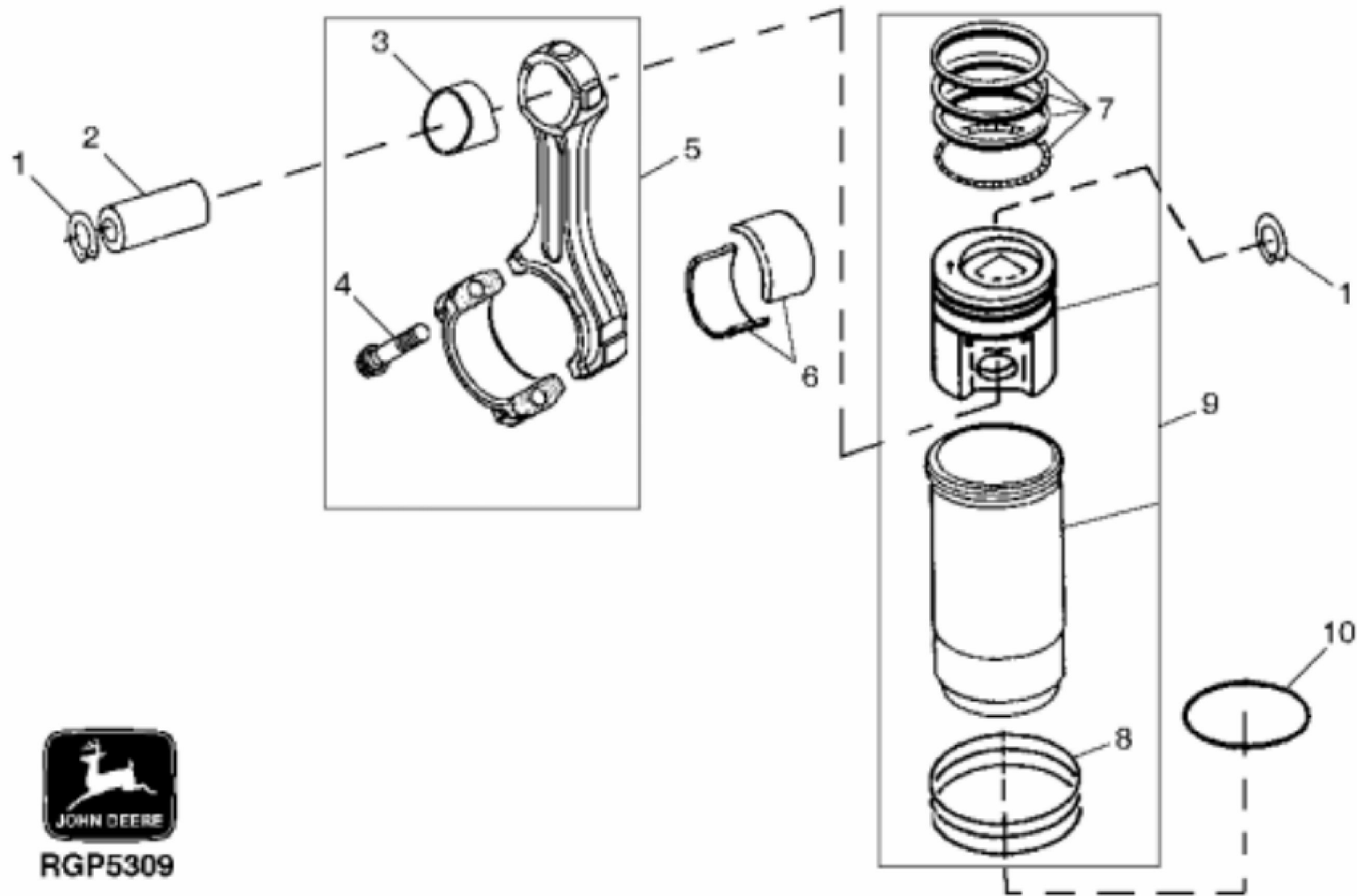
KEY	PART NO.	PART NAME	QTY	Engine Serial No.	REMARKS	
27	B2762R	O-RING	1	____-XXXXXX	(AUXILIARY DRIVE IDLER HOLE) 18.644 X 3.531 mm (47/64" X 0.139"), (USE WITH R128670)	
28	R126812	ELBOW FITTING	1		(SUB FOR R120187, THIS APPLICATION)	
..	.....	CYLINDER BLOCK	NA			
..	R71732	O-RING	1		(ENGINE OIL BYPASS)	



KEY	PART NO.	PART NAME	QTY	REMARKS	
1	R125855	GASKET	1		
2	RE161680	OIL PAN	1	(MARKED R159676)	
2	19M7963	CAP SCREW	2	M20 X 100	
3	R122474	SCREW	2	.375 X 2.25	
4	R121395	SCREW	2	.375 X 1.875	
5	R122477	SCREW	8	.500 X 6.000	
6	R122476	CAP SCREW	4	.500 X 4.000	
7	ET14521	BUSHING	4		
8	R122475	CAP SCREW	6	.500 X 2.500	
9	R27175	DRAIN PLUG	1		
10	F3171R	O-RING	1		
11	R126912	SCREW	2	.375 X 7.750	
12	R119654	DOWEL PIN	6		



KEY	PART NO.	PART NAME	QTY	REMARKS	
1	R120752	KEY	1	3.175 X 15.870 mm (1/8" X 5/8")	
2	R104587	GEAR	1		
3	RE504196	BEARING	6	.292 MM (.011") US, (PKG R502317 AND R502321), (SUB FOR RE57172)	
4	RE61851	THRUST WASHER	1	0.18MM (.007") OS FLANGE, (PKG R124842)	
5	RE504199	THRUST BEARING	1	.292 MM (.011") US, (PKG R502315 AND R502319), (SUB FOR RE57177)	
6	R41934	DOWEL PIN	1		
7	R116081	BEARING	12	PKG(2), STD	
8	R116311	KEY	1		
9	RE61268	CRANKSHAFT	1	(MARKED R122654 OR RE58781)	



**RGF5309**



Thank you so much for reading.  
Please click the “Buy Now!”  
button below to download the  
complete manual.



After you pay.  
You can download the most  
perfect and complete manual in  
the world immediately.

Our support email:  
[ebooklibonline@outlook.com](mailto:ebooklibonline@outlook.com)