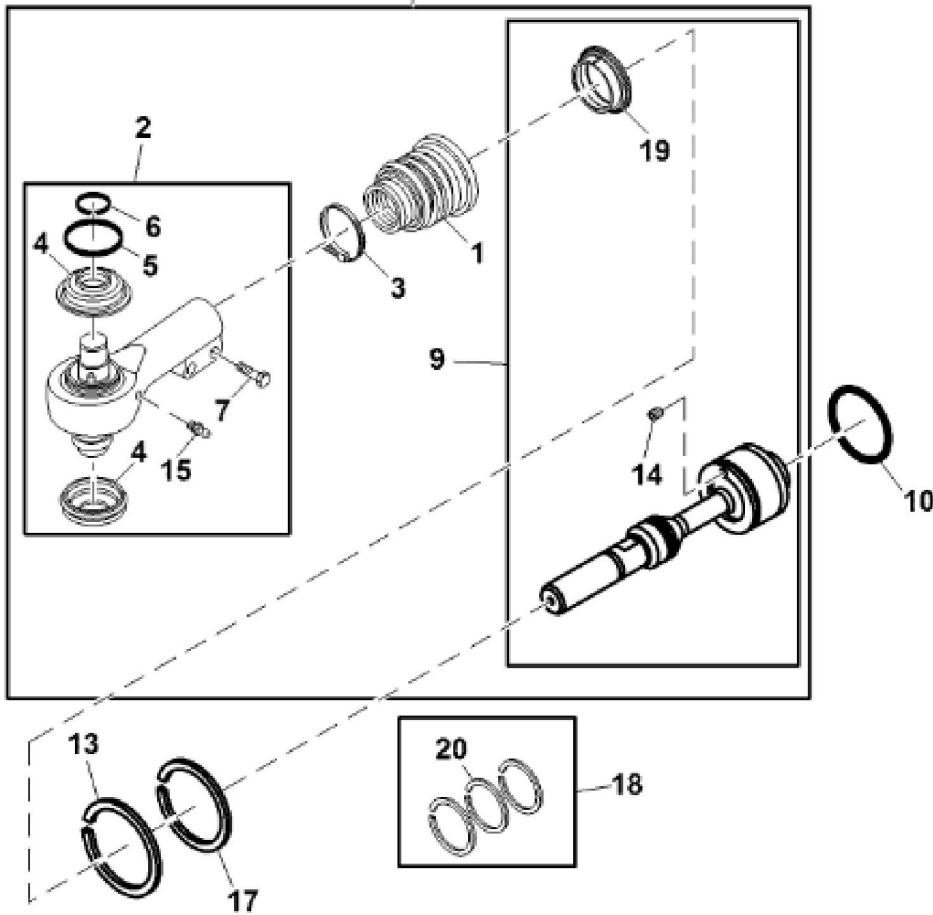
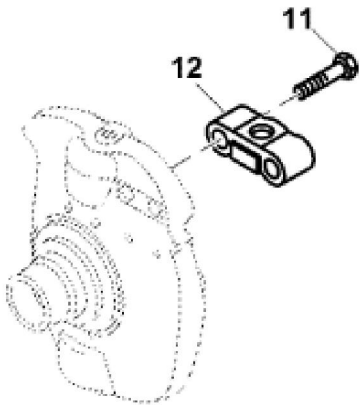
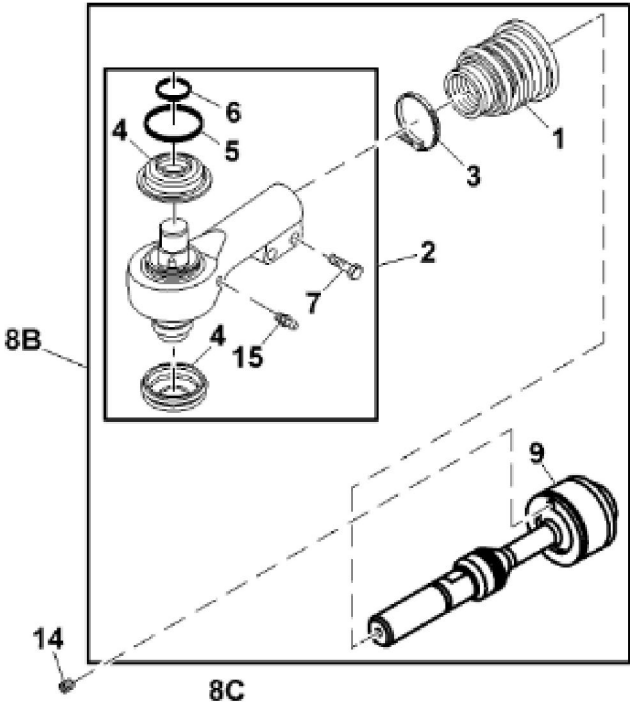
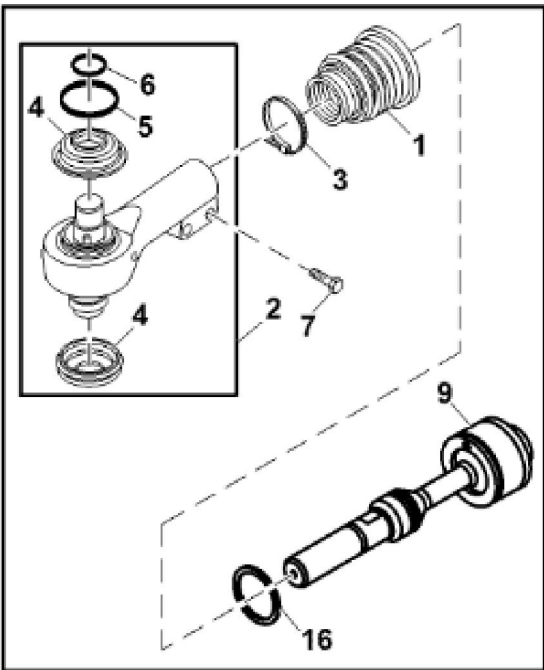
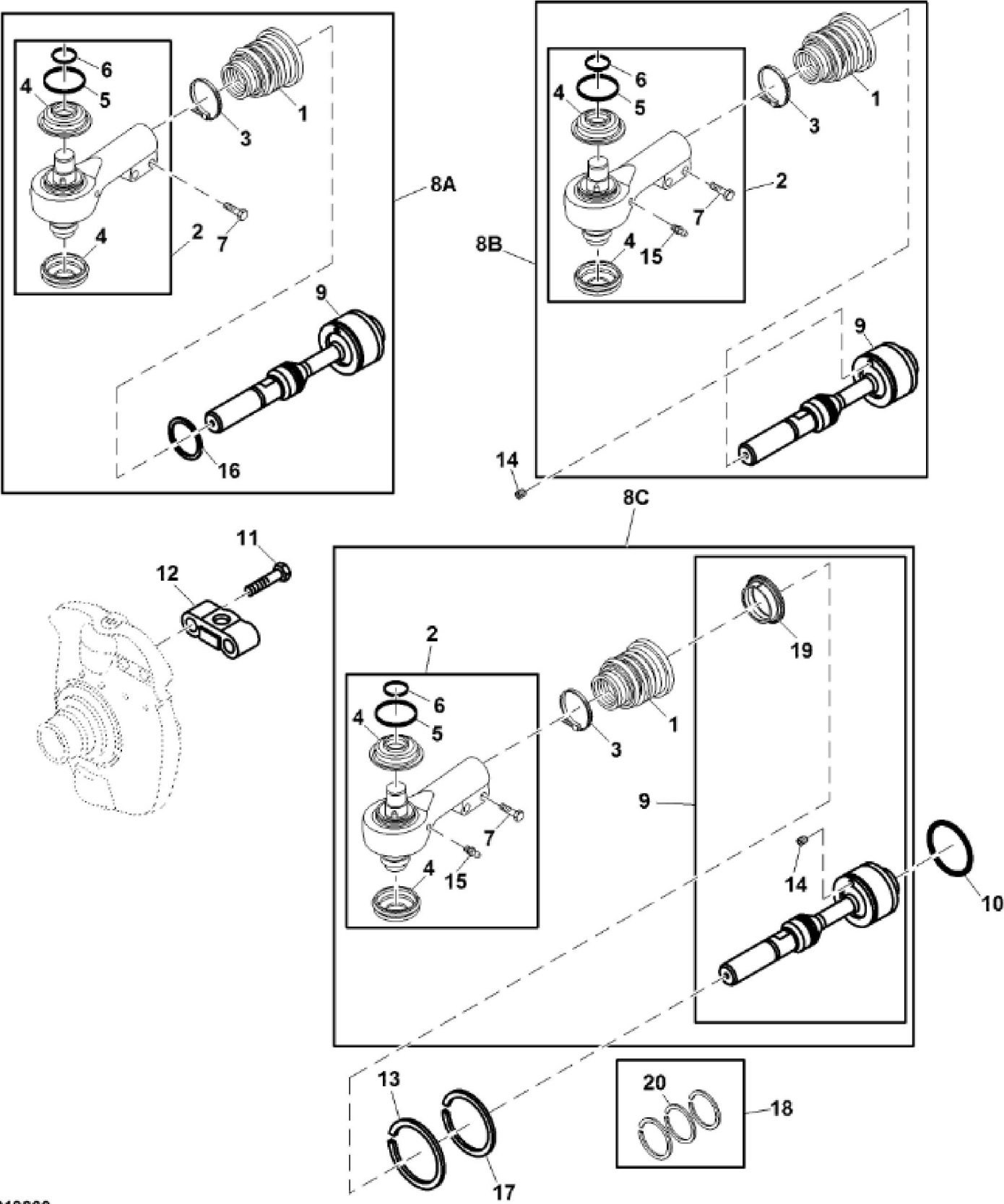


KEY	PART NO.	PART NAME	QTY	Tractor Serial No.	8420	8520	REMARKS	
1	R179858	SNAP RING	3		X	X		
2	RE173531	SEAL	1		X	X		
3	RE173530	BEARING	2		X	X		
4	RE179855	SEAL	1		X	X		
5	JD7781	LUBRICATION FITTING	3		X	X		
6	19M9143	CAP SCREW	1		X	X	M20 X 170	
7	24M7242	WASHER	1		X	X	21.400 X 42 X 5 mm	
8	R172166	SHAFT	1		X	X		
9	R172173	BEARING RACE	1		X	X		
10	R186969	CAP	1		X	X		
11	24M7242	WASHER	2		X	X	21.400 X 42 X 5 mm	
12	19M9135	CAP SCREW	2		X	X	M20 X 100	
13	R175453	SPRING	2	____-015440	X	X		
13	R216823	SPRING	2	015441-____	X	X		
14	R175452	SPRING	2	____-015440	X	X		
14	R216824	SPRING	2	015441-____	X	X		
15	R175450	BOOT	2	____-015440	X	X		
15	R216827	BOOT	2	015441-____	X	X		
16	RE216794	BALL JOINT	1		X	X	SUB FOR RE172154 OR RE200351	
16	RE580643	BALL JOINT	1		X	X	SUB FOR RE293267 OR RE216794	
17	40M7233	SNAP RING	1		X	X		
18	RE293274	ARM	1		X	X	LH; ORDER R537611, RE580643, 40M7233, R172170 AND R537928	
18	RE293273	ARM	1		X	X	RH; ORDER R537610 AND RE580643	
19	R172170	SNAP RING	1		X	X		
20	R179849	BEARING CUP	2		X	X		
21	R179850	WASHER	1		X	X		
22	RE179848	BEARING CONE	2		X	X		
23	RE193357	SEAL	2		X	X		
24	R173528	NUT	1		X	X		
25	19M9135	CAP SCREW	2		X	X	M20 X 100	
26	ET14521	BUSHING	2		X	X		
27	R172167	SHAFT	1		X	X		

KEY	PART NO.	PART NAME	QTY	Tractor Serial No.	8420	8520	REMARKS	
28	R175773	PIN FASTENER	1		X	X	ORDER R537928	
28	R537928	PIN FASTENER	1		X	X		
29	RE71255	PIPE PLUG	1		X	X		
30	R537610	ARM	1		X	X	RH, SUB FOR R200349	
30	R537611	ARM	1		X	X	LH, SUB FOR R200350	



KEY	PART NO.	PART NAME	QTY	8120	8220	8320	REMARKS	
1	RE182464	BOOT	1	X	X	X	USE WITH RE198903	
1	R216826	BOOT	1	X	X	X	USE WITH RE216819, RE292590 OR RE568090	
2	RE184942	TIE ROD END	1	X	X	X	ORDER RE216822; USE WITH RE198903	
2	RE216822	TIE ROD END	1	X	X	X	USE WITH RE216819, RE292590 OR RE568090	
3	R76477	TIE BAND	1	X	X	X	USE WITH RE198903	
3	R216825	SPRING	1	X	X	X	USE WITH RE216819, RE292590 OR RE568090	
4	R178948	BOOT	4	X	X	X	USE WITH RE184942	
4	R216827	BOOT	4	X	X	X	USE WITH RE216822	
5	R178950	SPRING	2	X	X	X	USE WITH RE184942	
5	R216824	SPRING	2	X	X	X	USE WITH RE216822	
6	R178949	SPRING	2	X	X	X	USE WITH RE184942	
6	R216823	SPRING	2	X	X	X	USE WITH RE216822	
7	19M7361	CAP SCREW	2	X	X	X	M12 X 50	
8A	RE198903	TIE ROD ASSEMBLY	2	X	X	X	ORDER RE568090; SUB FOR RE184940	
8B	RE216819	TIE ROD ASSEMBLY	2	X	X	X	ORDER RE568090	
8C	RE292590	TIE ROD ASSEMBLY	2	X	X	X	ORDER RE568090	
8C	RE568090	TIE ROD ASSEMBLY	2	X	X	X		
9	RE184941	TIE ROD END	1	X	X	X	ORDER RE565194; USE WITH RE198903	
9	RE216821	TIE ROD END	1	X	X	X	ORDER RE565194; USE WITH RE216819	
9	RE292591	TIE ROD END	1	X	X	X	ORDER RE565194; USE WITH RE292590	
9	RE565194	TIE ROD END	1	X	X	X	USE WITH RE568090	
10	E66413	O-RING	1	X	X	X		
11	19M9135	CAP SCREW	2	X	X	X	M20 X 100	
12	R549144	CAP	2	X	X	X	SUB FOR R186969	
13	R192696	SNAP RING	2	X	X	X		
14	RE71255	PIPE PLUG	2	X	X	X	3.175 mm (1/8"), USE WITH RE198903	
14	22H1009	SET SCREW	2	X	X	X	1/4" X 5/16", USE WITH RE216819, RE292590 OR RE568090	
15	JD7759	LUBRICATION FITTING	2	X	X	X		
16	R196679	RETAINER	2	X	X	X	USE WITH RE198903	
17	R196760	SNAP RING	2	X	X	X		
18	RE196832	HARDWARE KIT	1	X	X	X		
19	R292592	INSERT	1	X	X	X	USE WITH RE565194; Tie Rod Boot	
20	R172170	SNAP RING	1	X	X	X		



Thank you so much for reading.  
Please click the “Buy Now!”  
button below to download the  
complete manual.



After you pay.

You can download the most  
perfect and complete manual in  
the world immediately.

Our support email:

[ebooklibonline@outlook.com](mailto:ebooklibonline@outlook.com)