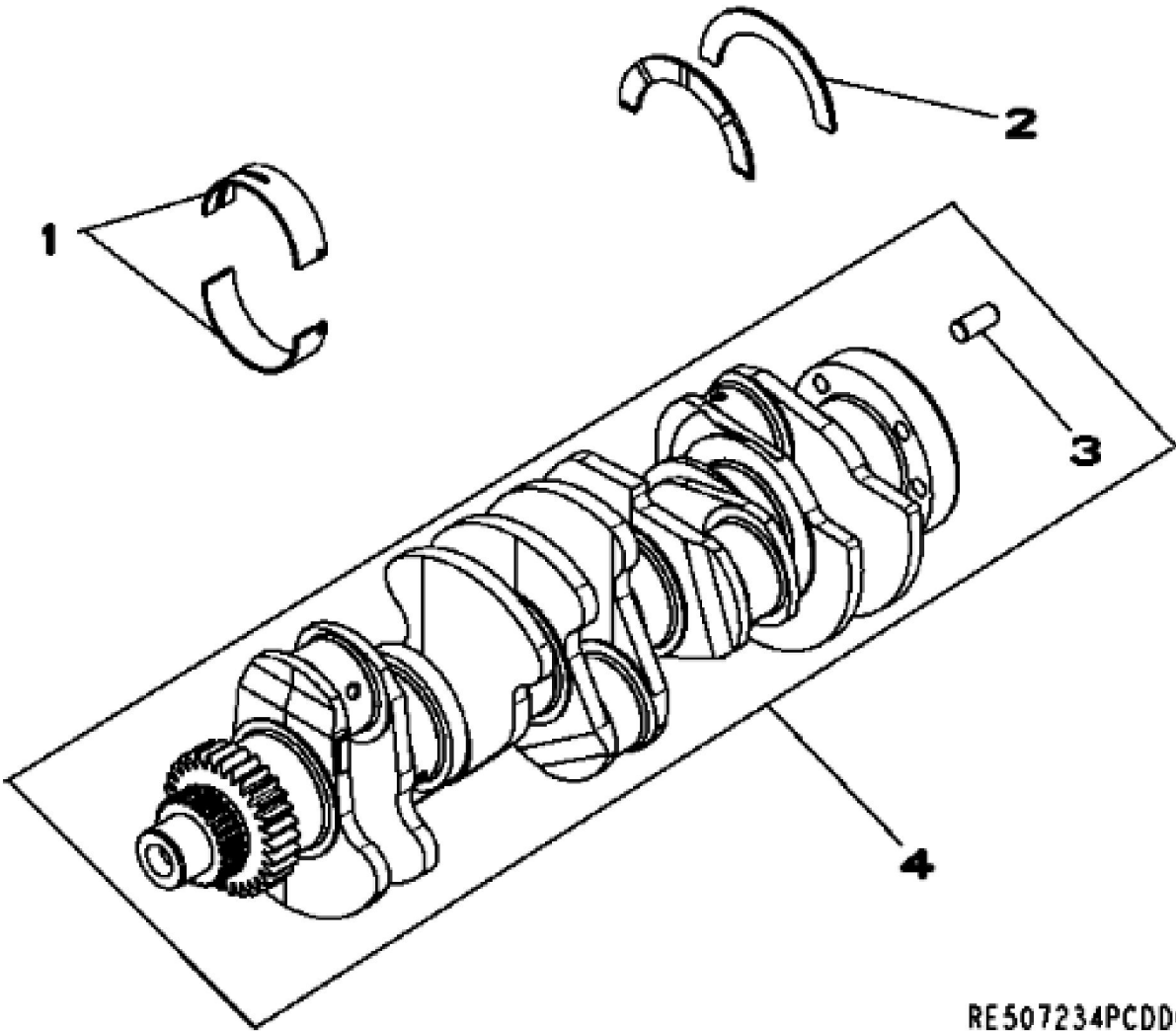
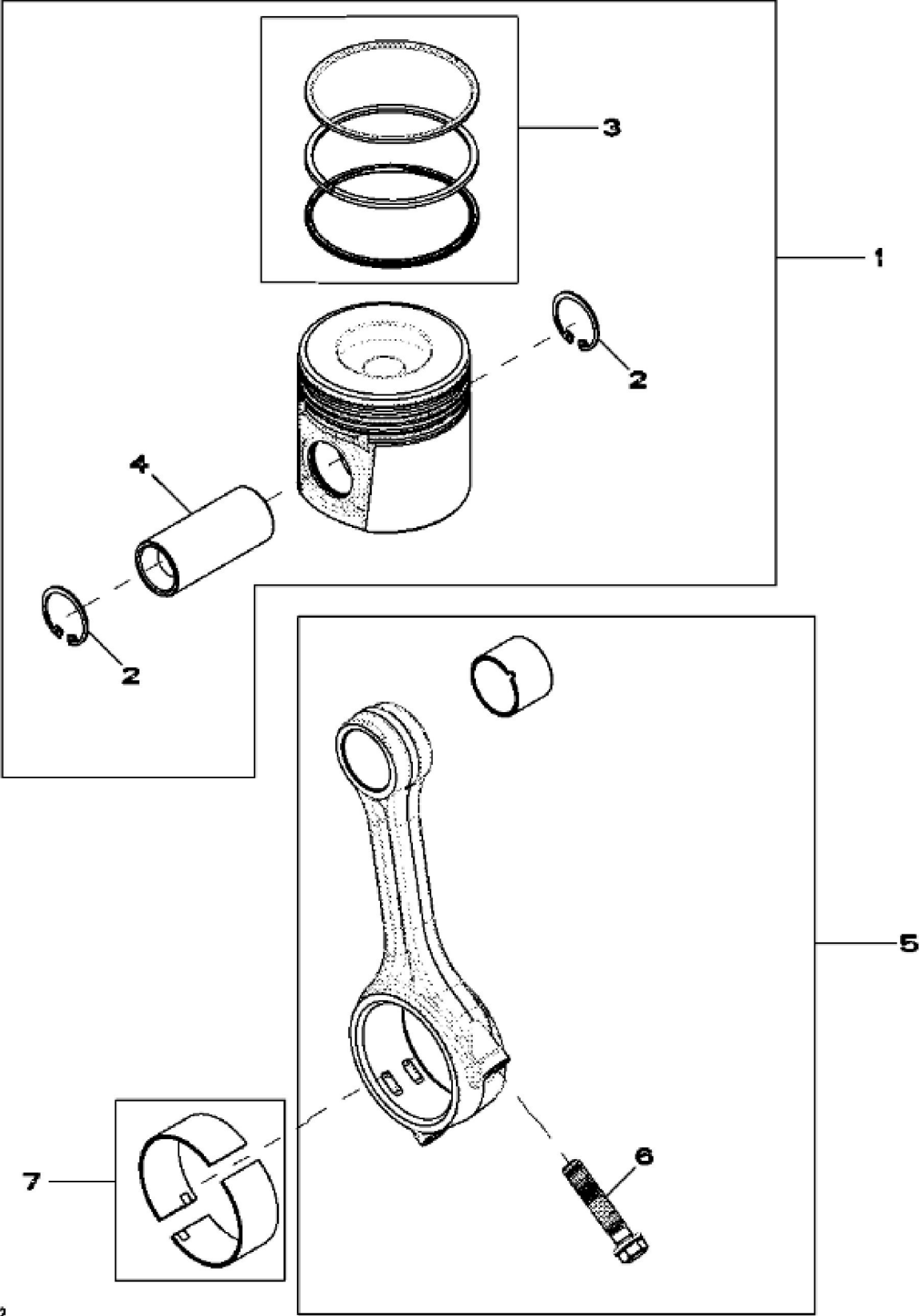


KEY	PART NO.	PART NAME	QTY	Engine Serial No.	REMARKS	
1	.....	CYLINDER BLOCK	NA	____-113663	(MARKED R504114) (USE WITHRE515351)	
1	.....	CYLINDER BLOCK	NA	113664-____	(MARKED R522413) (USE WITHRE529913)	
2	34M7094	SPRING PIN	1		4 X 16 mm	
3	R528188	PIN	5			
4	R502725	PLUG	1			
5	RE71255	PIPE PLUG	28		1/8"-27NPT	
6	34M7247	SPRING PIN	2		11 X 16 mm	
7	R504965	PLUG	1			
8	15H685	PIPE PLUG	1		1/4"	
9	R48685	DOWEL PIN	2		(SUB FOR A120R)	
10	R116466	PLUG	7			
11	R515003	SCREW	12			
12	R505135	ORIFICE	5			
13	T18891	PLUG	1		OD 16MM	
14	R504808	BUSHING	5			
15	L157372	SCREW	2			
16	.....	CAMSHAFT	1		(MARKEDR528141) (ORDER RE524772)(9901)	
16	RE524772	CAM KIT	1			
16	SE501619	CAMSHAFT REMAN	1		(REMAN FOR RE524772)	
17	RE518215	BALL BEARING	1			
..	.....	COMPLETE BLOCK ASSEMBLY	1		(9901)	
..	.....	OIL PUMP INTAKE	1	____-113663	(1900)	
..	.....	OIL PUMP INTAKE	1	113664-____	(1900)	

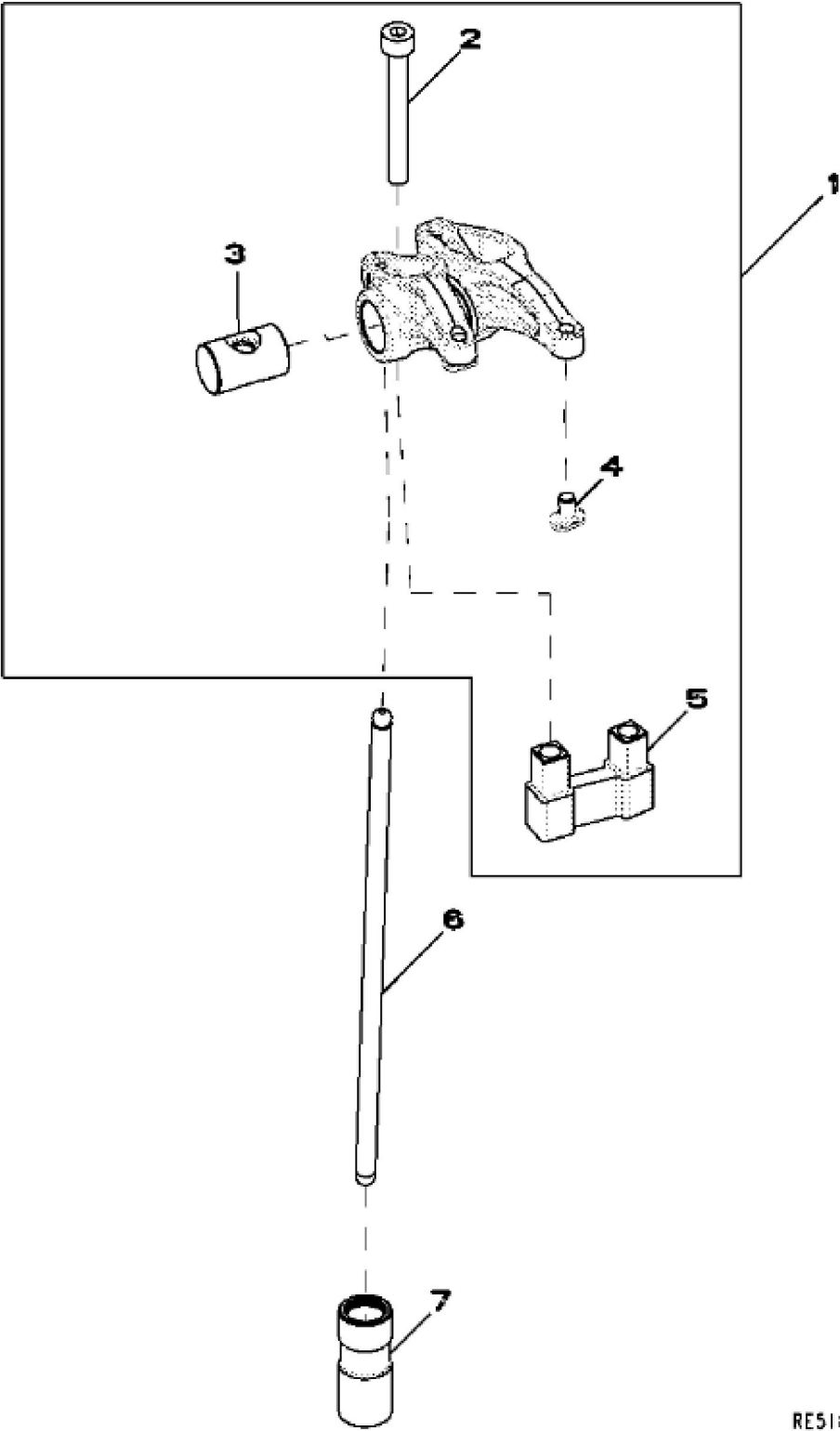


RE507234PCDD02

KEY	PART NO.	PART NAME	QTY	REMARKS	
1	RE520626	BEARING KIT	6	STD (9901)	
2	R502796	THRUST WASHER	2	(1 PC)	
2	RE520627	BEARING KIT	1	(2 PC), (9901)	
3	R48685	DOWEL PIN	1		
4	RE505340	CRANKSHAFT	1		
4	SE501643	CRANKSHAFT REMAN	1	(WITH BEARINGS) (REMAN FOR RE505340)	



KEY	PART NO.	PART NAME	QTY	REMARKS	
1	RE520936	PISTON REPLACEMENT KIT	5	STD, (MARKED RE516347)	
2	40M1855	SNAP RING	10		
3	RE520935	PISTON RING KIT	5	STD	
4	R503480	PISTON PIN	5	OD 30MM	
5	RE504544	CONNECTING ROD	5		
5	SE501898	CONNECTING ROD REMAN	5	(REMAN FOR RE504544)	
6	R502503	SCREW	10	M10 X 49	
7	RE520937	BEARING KIT	5	STD	



Thank you so much for reading.  
Please click the “Buy Now!”  
button below to download the  
complete manual.



After you pay.

You can download the most  
perfect and complete manual in  
the world immediately.

Our support email:

[ebooklibonline@outlook.com](mailto:ebooklibonline@outlook.com)