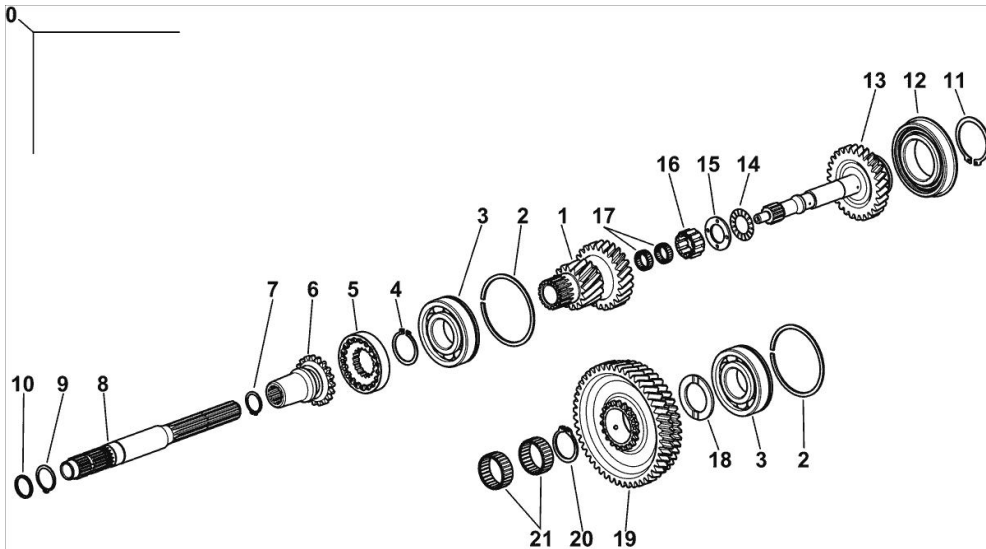


UPGRADE FROM 1/2 TO 4 SPEED - KIT - 9.AW746.90.0

Fig.	P/n	QTY	Name
------	-----	-----	------

Notes:

[5090 C -> ZKDY360100TD10001] [5090 C -> ZKDY360200TD10001]



0	9.AW736.90.0	1	aftermarket kit
1	0.020.8207.0	1	gear
2	2.1429.067.7	2	circlip Ø 90
3	2.2999.367.0	2	special bearing 40 x 90 x 23
4	0.009.6867.0	1	crown wheel
5	2.1410.016.7	1	circlip 40x1.75
6	0.009.6866.0	1	sleeve
7	2.1410.010.7	1	circlip 25
8	0.007.3479.3/10	1	power take-off shaft
9	2.1410.012.7	1	circlip
10	2.1530.062.0	1	oil seal 23.81 x 2.62
11	2.1410.022.7	1	circlip 55
12	2.2043.015.0	1	bearing 55 x 100 x 21
13	0.020.8210.0	1	gear
14	2.2999.229.0	1	roller cage 25x42x2
15	2.1579.958.0	1	spacer 25 x 44 x 3
16	2.2999.198.0	1	roller cage 25x37x20
17	2.2999.208.0	2	roller cage 20x26x8.8
18	0.255.3450.0	1	shoulder ring 40 x 60 x 3.5
19	0.020.8208.0	1	gear Z = 49 / Z = 46 / Z = 19
20	2.1412.015.7	1	circlip 40x2.5
21	2.2770.073.0	2	roller cage 40x47x18

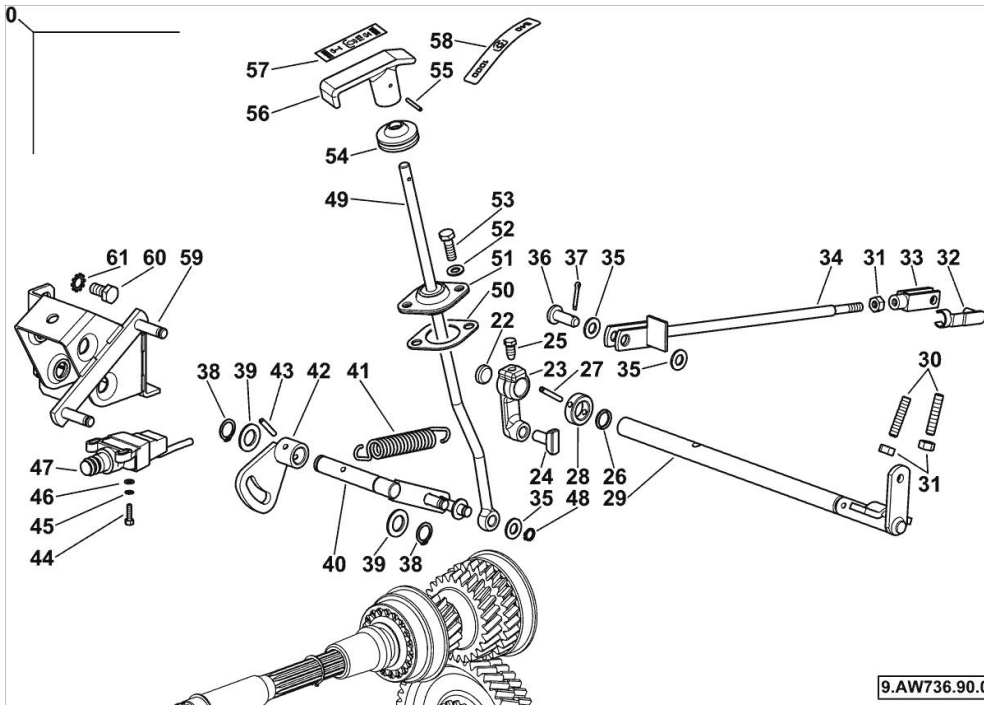
9.AW736.90.0

UPGRADE FROM 1/2 TO 4 SPEED - KIT - 9.AW746.90.0

Fig.	P/n	QTY	Name
------	-----	-----	------

Notes:

[5090 C -> ZKDY360100TD10001] [5090 C -> ZKDY360200TD10001]



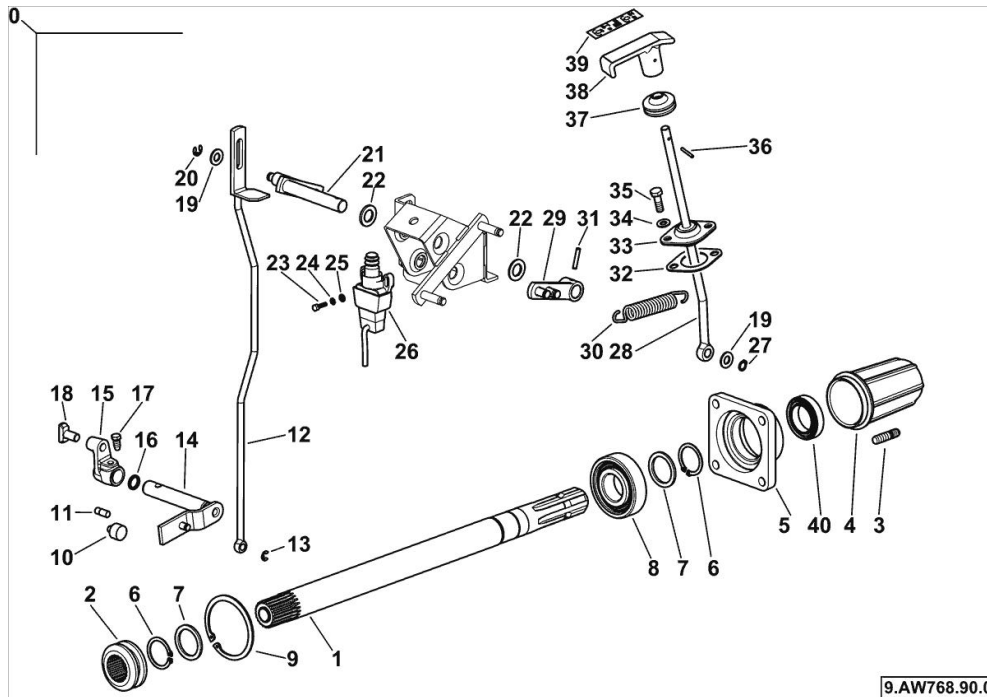
0	9.aw736.90.0	1	aftermarket kit
22	2.3171.007.4	1	plug Ø 18
23	0.007.3492.0	1	small lever
24	0.001.5945.0/10	1	shoe
25	2.0399.019.1	1	screw m 8 p.1 x 16
26	2.1530.033.0	1	oil seal 13.10x2.62
27	2.1631.415.2	1	pin 5x32
28	2.1549.152.2	1	spacer 18.2x30x10
29	0.008.5685.3/20	1	lever
30	2.0512.216.2	2	screw m 8 x 40
31	2.1011.105.2	3	nut m 8 p.1.25
32	2.1673.007.2	1	pin m 8x32
33	2.3510.014.2	1	fork m 8x32
34	0.008.9033.3/30	1	rod
35	2.1310.006.2	3	flat washer 10.5x21
36	2.1671.407.2	1	pin 10 x 28
37	2.1690.307.2	1	split pin 3.2x18
38	2.1410.004.2	2	circlip 16
39	2.1311.010.2	2	flat washer 16
40	0.008.9475.3	1	lever
41	2.4049.139.1/10	1	spring
42	0.008.3659.3	1	lever
43	2.1631.412.0	1	roll pin 5x26
44	2.0119.070.6	2	screw m 4 p.0.7 x 16
45	2.1470.052.2	2	lock washer 4
46	2.1310.028.2	2	flat washer
47	2.7659.202.0	1	switch
48	2.1410.001.1	1	circlip 10
49	0.020.7814.0	1	rod
50	0.009.0480.0	1	gasket
51	0.009.1618.3	1	support
52	2.1310.004.2	2	flat washer 8.4x17
53	2.0112.209.2	2	screw m 8 p 1.25 x 25
54	2.6569.069.0/10	1	rubber plug
55	2.1630.251.9	1	pin 3x26
56	0.020.7873.0	1	grip
57	2.9939.575.0	1	plate
58	2.9939.573.0	1	plate
59	0.008.9472.3/40	1	support
60	2.0112.307.2	2	screw m 10 p.1.5 x 20
61	2.1470.006.2	2	lock washer 10

PTO - GROUNDSPPEED PACKAGE - KIT - 9.AW768.90.0

Fig.	P/n	QTY	Name
------	-----	-----	------

Notes:

[5090 C -> ZKDY360100TD10001] [5090 C -> ZKDY360200TD10001]



1	0.255.3471.3/30	1	reduction unit shaft
2	0.255.3469.0	1	sleeve
3	0.154.3655.0/10	1	guard
4	2.0432.155.7	4	stud bolt m 10 p.1.5 / p. 1.25 x 25
5	0.255.3150.0/20	1	cover
6	2.1410.014.1	2	circlip 35
7	2.1599.874.0	2	washer 35 x 45 x 3.0
8	2.2060.011.0	1	ball bearing 35 x 80 x 21
9	2.1411.032.1	1	circlip 80
10	2.0239.003.2	1	screw
11	2.0439.002.1	1	stud bolt m 8 p.1.25 x 20
12	0.021.4340.2	1	rod
13	2.1439.003.0	1	circlip 6, d128
14	0.255.3468.2/20	1	lever
15	0.255.3470.0	1	lever
16	2.1530.033.0	1	oil seal 13.10x2.62
17	2.0399.019.1	1	screw m 8 p.1 x 16
18	0.001.5945.0/10	1	shoe
19	2.1310.006.2	2	flat washer 10.5x21
20	2.1430.008.7	1	circlip 7
21	0.008.9474.2/20	1	lever
22	2.1311.010.2	2	flat washer 16
23	2.0119.070.6	2	screw m 4 p.0.7 x 16
24	2.1470.052.2	2	lock washer 4
25	2.1310.028.2	2	flat washer
26	2.7659.096.0/10	1	switch
27	2.1410.001.1	1	circlip 10
28	0.020.7853.0	1	rod
29	0.008.3656.3	1	lever
30	2.4049.139.1/10	1	spring
31	2.1631.412.0	1	roll pin 5x26
32	0.009.0480.0	1	gasket
33	0.009.1618.3	1	support
34	2.1310.004.2	2	flat washer 8.4x17
35	2.0112.209.2	2	screw m 8 p 1.25 x 25
36	2.1630.251.9	1	pin 3x26
37	2.6569.069.0/10	1	rubber plug
38	0.020.7873.0	1	grip
39	2.9939.576.0	1	plate
40	2.1529.107.0	1	special oil seal 35x55x12.5
0	9.AW768.90.0	1	spare parts kit

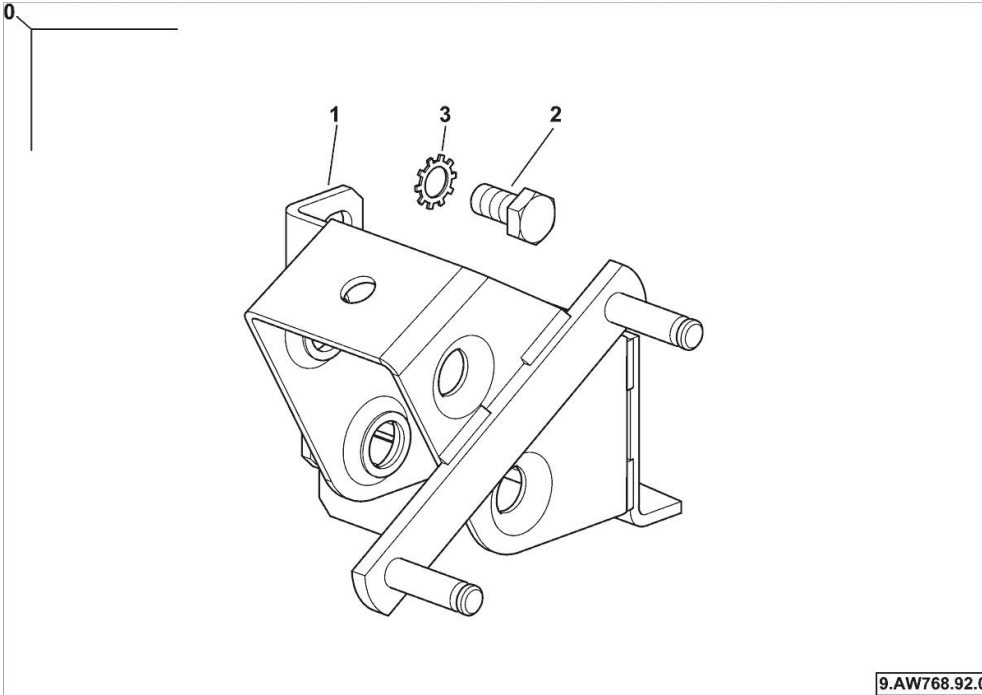
COMPLETION

Fig.	P/n	QTY	Name
------	-----	-----	------

Notes:

[5090 C -> ZKDY360100TD10001] [5090 C -> ZKDY360200TD10001]

0	9.AW768.92.0	1	spare parts kit
1	0.008.9472.3/40	1	support
2	2.0112.307.2	2	screw m 10 p.1.5 x 20
3	2.1470.006.2	2	lock washer 10



9.AW768.92.0

FRONT PTO KIT - KIT - 9.Y4059.90.0

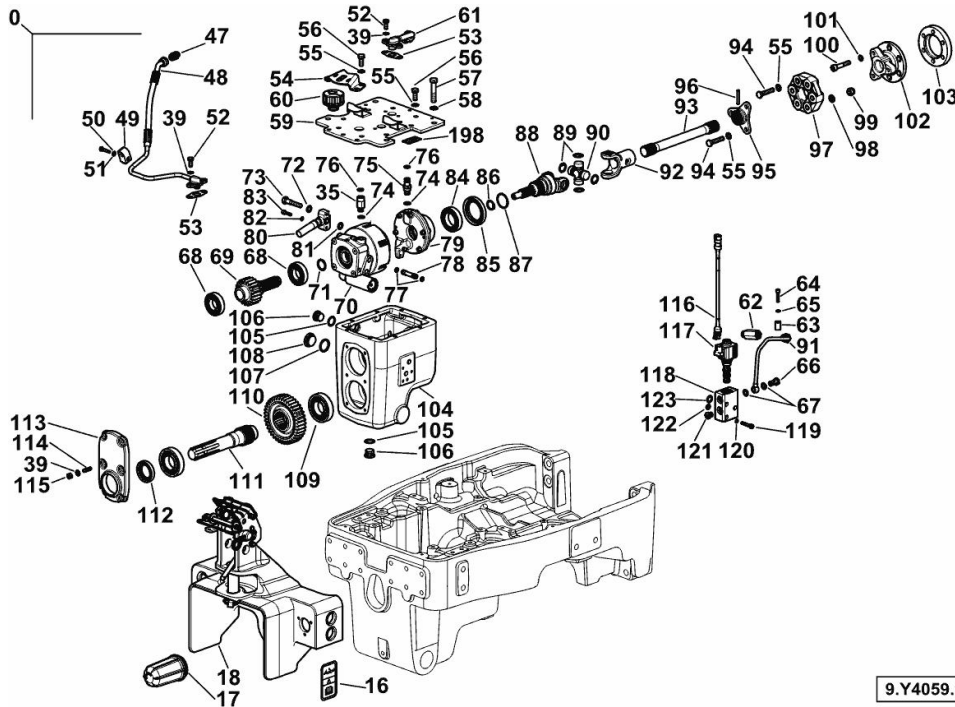


Fig.	P/n	QTY	Name
------	-----	-----	------

Notes:

[5090 C -> ZKDY360100TD10001] [5090 C -> ZKDY360200TD10001]

0	9.Y4059.90.0	1	aftermarket kit
16	2.9939.274.0	1	plate
17	0.154.3655.0/10	1	guard
18	0.019.4250.4	1	support ☞ 0.019.4250.4 ☞ 0.019.4250.4
35	2.3249.747.0	1	pipe fitting
39	2.1470.004.2	11	lock washer 8
47	2.3272.006.0	1	pipe fitting m 14 p.1.5
48	0.020.9592.3	1	tube
49	2.3320.103.0	1	collar Ø mm 10
50	2.1310.002.2	1	flat washer 6.4x12.5
51	2.0112.011.2	2	screw m 6 p.1x30
52	2.0112.207.2	5	screw m 8 p 1.25 x 20
53	0.052.1558.0/10	2	gasket
54	0.019.1504.0/10	1	support
55	2.1470.006.2	16	lock washer 10
56	2.0112.309.2	10	screw m 10 p.1.5 x 25
57	2.0112.421.2	4	screw m 12 p.1.75 x 60
58	2.1470.007.2	4	lock washer 12
59	0.019.0312.3/20	1	cover
60	2.3199.344.0	1	plug
61	0.019.9677.3	1	tube
62	0.019.9675.3	1	screw
63	01141549	1	terminal d=8
64	2.0312.110.2	1	screw
65	2.1470.002.2	7	lock washer 6
66	2.3339.765.2/10	1	pipe union m 12 p.1x23
67	2.1561.106.0	2	gasket Ø 12 -B-
68	2.2040.012.0	2	ball bearing iso 40 bc 02
69	0.018.0002.3	1	shaft Z = 20
70	0.017.6302.4/20	1	hydraulic PTO clutch
71	2.1530.062.0	1	oil seal 23.81 x 2.62
72	2.1560.008.0	2	gasket 12.2 x 18
73	2.0119.154.2	2	screw m 12 p.1.75x58
74	2.1560.009.0	2	gasket 14.2x18
75	2.3339.537.2	1	pipe fitting m 14 p.1.5
76	2.1530.024.0	2	oil seal 10.78 x 2.62
77	2.1530.019.0	4	oil seal 9.25x1.78
78	0.017.6860.0	2	tube
79	0.008.2669.4	1	pump

FRONT PTO KIT - KIT - 9.Y4059.90.0

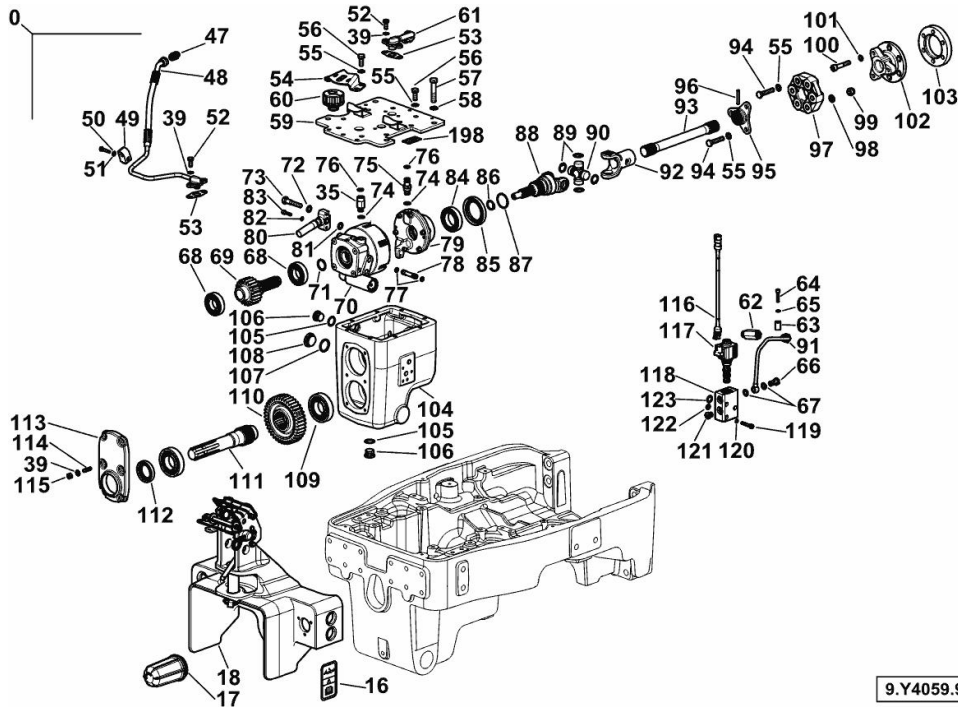
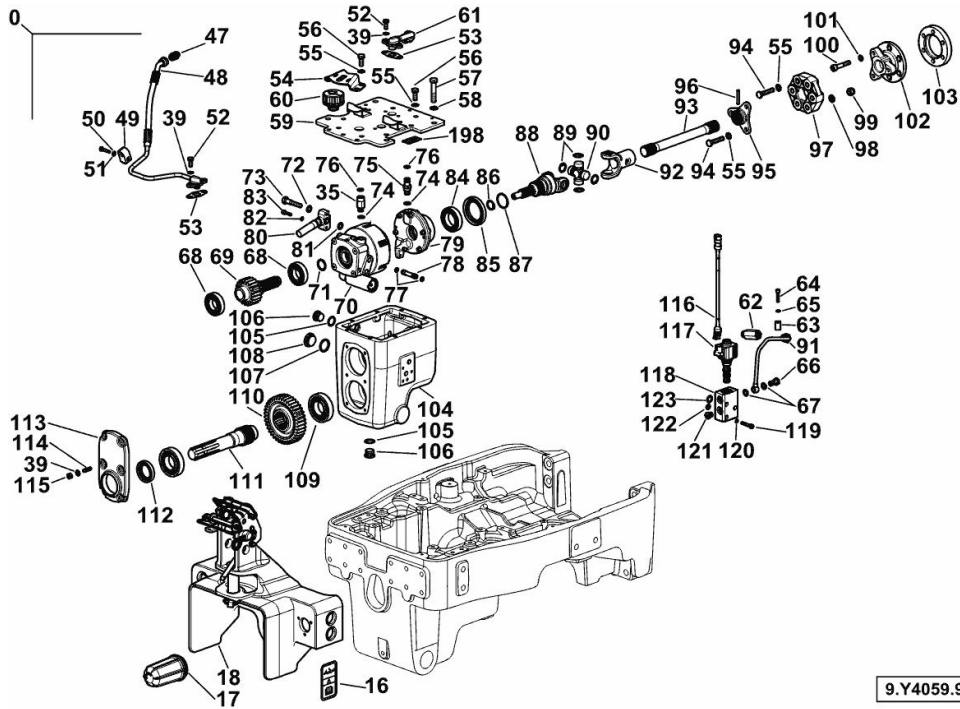


Fig.	P/n	QTY	Name
80	0.017.6867.3	1	tube
81	2.1532.035.0	1	oil seal 14x1.78
82	2.1480.012.2	2	washer 6, d128
83	2.0312.108.2	2	screw m 6 p.1 x 25
84	2.2030.009.0	1	ball bearing iso 40 bc 10
85	2.1520.229.0	1	oil seal
86	2.1410.009.1	1	circlip 24
87	2.1420.016.0	1	circlip a 40
88	0.008.8346.0/30	1	shaft
89	2.1499.012.1/10	4	circlip Ø 24
90	0.146.4632.4/10	1	universal joint
91	0.019.9674.3	1	tube
92	0.009.1757.0/10	1	sleeve
93	0.018.6495.0	1	power take-off shaft
94	2.0112.319.2	6	screw m 10 p.1.5 x 50
95	0.009.1758.0/40	1	flange
96	2.1630.615.0	1	roll pin 6x40
97	0.008.8341.0/10	1	flex coupling
98	2.1310.006.2	3	flat washer 10.5x21
99	2.1120.006.2	3	nut m 10 p.1.5
100	2.0312.317.2	6	screw m 10 x 55
101	2.1480.015.2	6	washer 10
102	0.019.2206.0	1	flange
103	0.019.2387.0	1	spacer
104	0.017.5992.0/10	1	box
105	2.1560.017.0	2	gasket 22.2 x 27
106	2.3120.002.4	2	plug m 22 x 1.5
107	2.1560.023.0	1	copper gasket 30.3 x 36
108	2.3110.425.2	1	plug m 30
109	2.2423.012.0	2	roller bearing 40 x 80 x 18
110	0.018.0001.0	1	gear Z = 39
111	0.007.5328.0/20	1	power take-off shaft
112	2.1520.220.0	1	oil seal 40x60x10
113	0.007.5325.0/10	1	cover
114	2.0432.001.7	6	stud bolt m 8 p.1.25 - 1.00 x 16
115	2.1011.405.2	6	nut m 8 p.1
116	0.012.2756.3	1	electric cable
117	2.3729.250.0/60	1	solenoid valve 13V - 20W ☞ 2.3729.250.0/60
118	0.017.6837.0	1	small block
119	2.0312.112.2	3	screw m 6 p.1 x 35
120	2.1560.001.0	3	gasket 6.2x10
121	2.3139.024.2	2	plug m 12 p.1.5
122	2.1532.038.0	2	oil seal

FRONT PTO KIT - KIT - 9.Y4059.90.0

Fig.	P/n	QTY	Name
123	2.1532.018.0	4	oil seal 9.19 x 2.62
198	2.9939.469.0	1	plate 2100

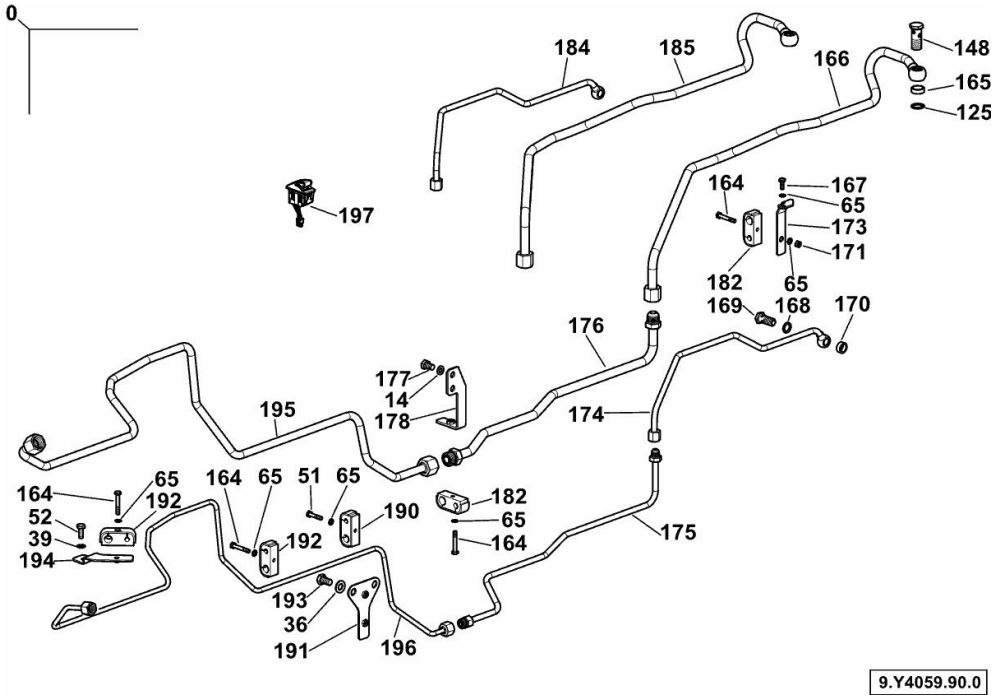


FRONT PTO KIT - KIT - 9.Y4059.90.0

Fig.	P/n	QTY	Name
------	-----	-----	------

Notes:

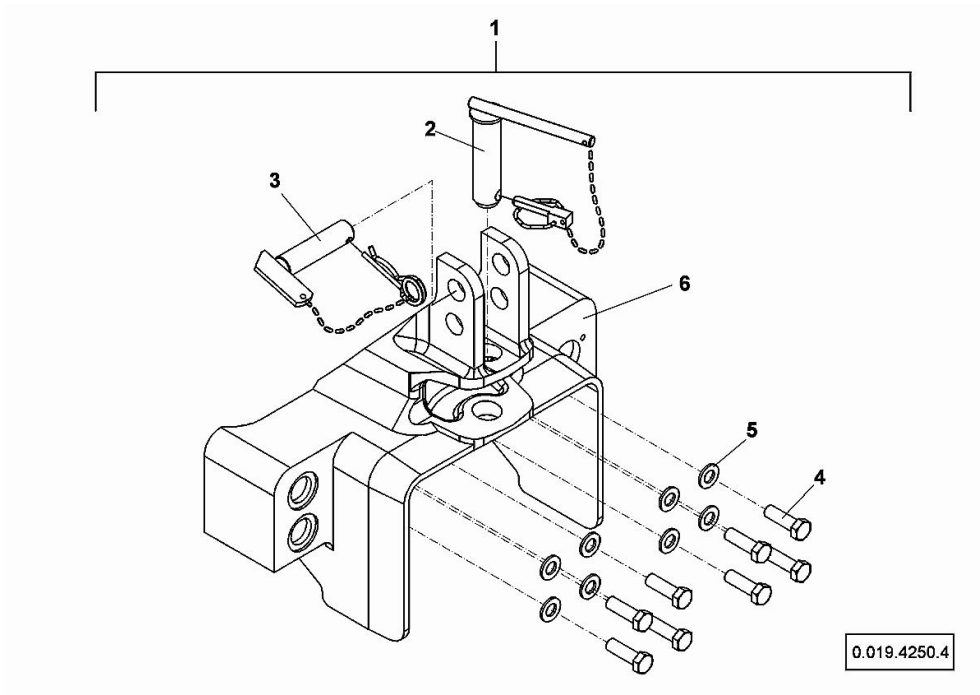
[5090 C -> ZKDY360100TD10001] [5090 C -> ZKDY360200TD10001]



0	9.Y4059.90.0	1	aftermarket kit
14	2.1310.004.2	2	flat washer 8.4x17
36	2.1310.007.2	2	flat washer 13 x 24
39	2.1470.004.2	11	lock washer 8
51	2.0112.011.2	2	screw m 6 p.1x30
52	2.0112.207.2	5	screw m 8 p 1.25 x 20
65	2.1470.002.2	7	lock washer 6
125	2.1560.014.0	1	washer 18.2 x 24
148	2.3335.055.2	1	pipe union m 18 p.1.5
164	2.0112.015.2	4	screw m 6 p.1x40
165	2.1569.158.0/10	1	gasket 18.2 x 24 x 6.5
166	0.021.0980.3	1	tube
167	2.0112.005.2	1	screw m 6 p.1 x 16
168	2.1560.010.0	1	gasket 14.2 x 20
169	2.3335.053.2	1	pipe union m 14 p.1.5x32
170	2.1569.190.0	1	gasket 14x20x8
171	2.1011.103.2	1	nut m 6 p.1
173	0.020.4932.0	1	bracket
174	0.021.0981.3	1	tube
175	0.020.9539.3	1	tube Ø 10
176	0.020.9540.3	1	tube Ø 16
177	2.0112.305.2	2	screw m 10 p.1.5 x 16
178	0.020.7580.3	1	tube
182	2.3320.308.0	2	clamp Ø 10/16
184	0.021.1263.3	1	tube
185	0.021.1253.3	1	tube
190	2.3320.205.0	1	terminal
191	0.019.2606.3	1	bracket
192	2.3320.305.0	2	terminal 14/8
193	2.0112.407.2	2	screw m 12 p.1.75 x 20
194	0.019.2609.3	1	bracket
195	0.019.9678.3	1	tube
196	0.019.9676.3	1	tube
197	0.019.5354.0/10	1	switch P.T.O.

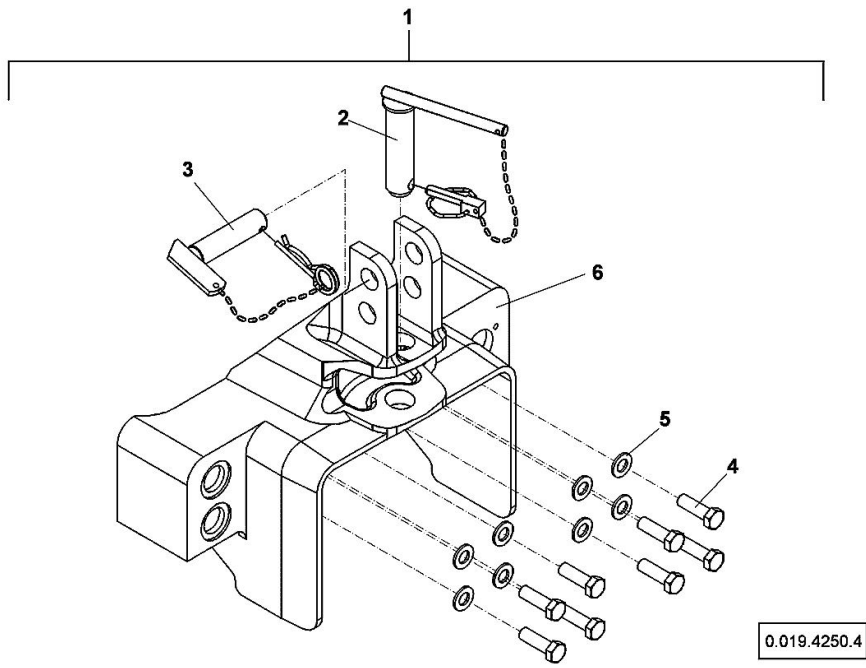
3 POINT HITCH

Fig.	P/n	QTY	Name
1	0.019.4250.4	1	support
2	0.900.1998.7	1	pin
3	0.900.1998.8	1	pin
4	0.900.1998.9	8	screw m 15x28x2.5
5	0.900.1201.9	8	washer
6	0.000.0000.1	1	cannot be supplied



3 POINT HITCH

Fig.	P/n	QTY	Name
1	0.019.4250.4	1	support
2	0.900.1998.7	1	pin
3	0.900.1998.8	1	pin
4	0.900.1998.9	8	screw m 15x28x2.5
5	0.900.1201.9	8	washer
6	0.000.0000.1	1	cannot be supplied



Buy Now



Our support email:

ebooklibonline@outlook.com