

STEERING COLUMN

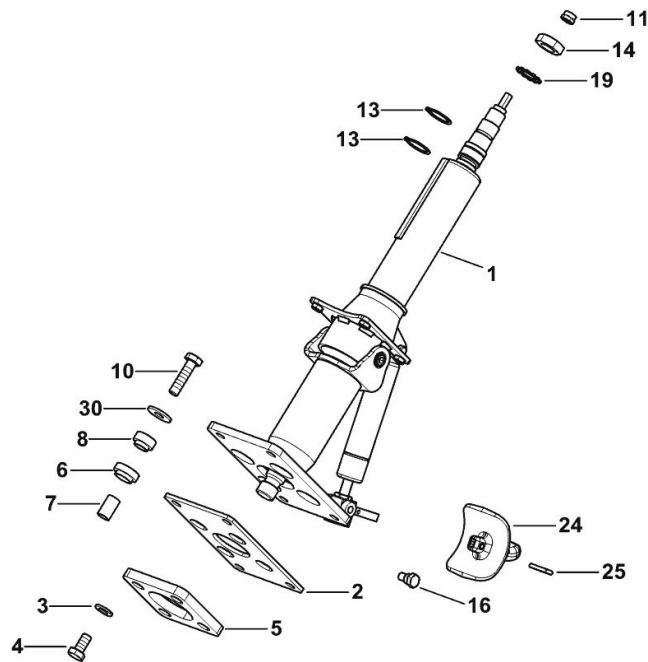
Fig.	P/n	QTY	Name
------	-----	-----	------

Notes:

[5110 C -> ZKDY520100TD10001] [5110 C -> ZKDY520200TD10001]

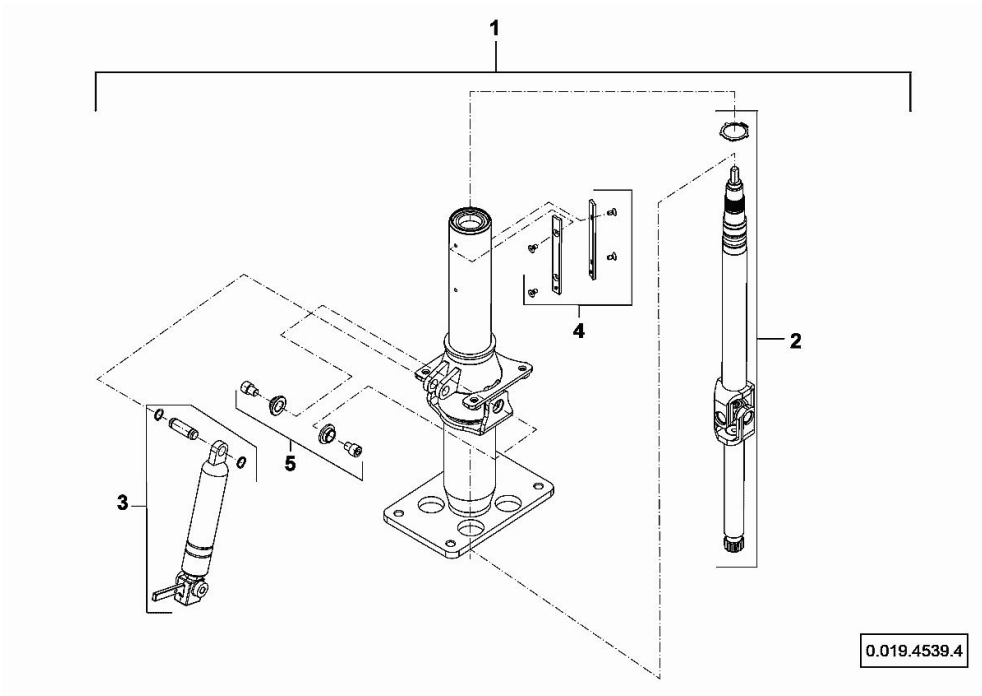
1	0.020.4539.4	1	steering column ☞ 0.020.4539.4
2	0.010.7445.0/10	1	plate
3	2.1310.006.2	4	flat washer 10.5x21
4	2.0312.306.2	4	screw m 10 p.1.5 x 20
5	04355546	1	plate
6	04355695	4	spacer
7	04386557	4	spacer
8	0.018.1722.0	4	spacer
10	2.0114.315.2	4	screw m 10 p.1.5 x 40
11	2.1120.105.2	1	self-locking nut m 8 p.1.25
13	2.1410.010.7	2	circlip 25
14	2.1011.510.2	1	nut m 18 p.1.5
16	2.0119.243.2/10	2	screw m 8 p1.25x16
19	2.1470.010.2	1	lock washer 18
24	0.013.2547.0/10	1	lever
25	2.1690.408.2	1	split pin 4 x 20
30	2.1399.039.2/10	4	washer 10 x 25 x 2,5

9_Y4063_00_0-A-001



STEERING COLUMN

Fig.	P/n	QTY	Name
1	0.020.4539.4	1	steering column
2	0.900.2139.6	1	shaft - KIT
3	0.900.0305.8	1	spring
4	0.010.3701.0	1	stick
5	0.900.0129.2	1	pin

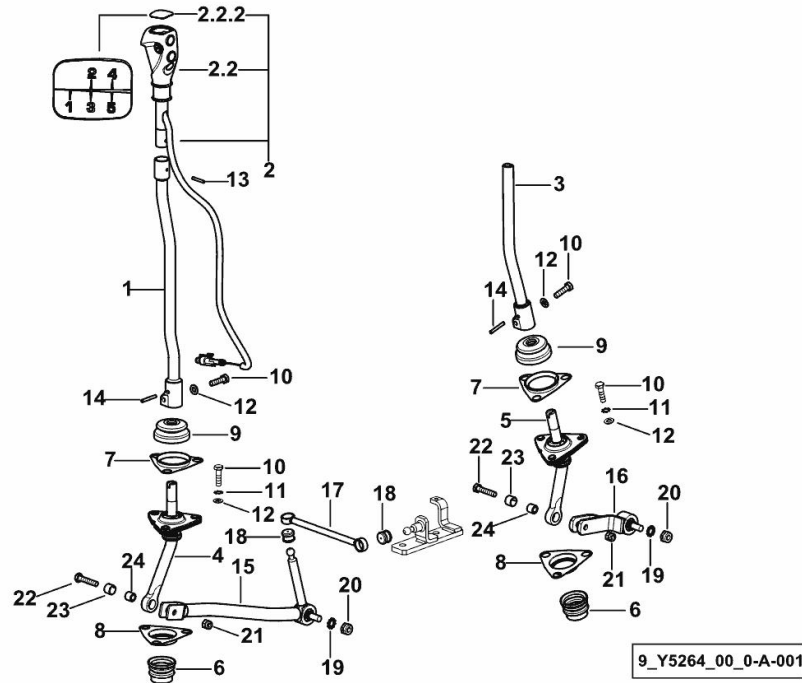


GEARBOX CONTROLS

Fig.	P/n	QTY	Name
------	-----	-----	------

Notes:

- FOR TYPES WITH HI - LO [5110 C -> ZKDY520100TD10001] - FOR TYPES WITH HI - LO [5110 C -> ZKDY520200TD10001] - FOR TYPES WITH H-M-L [5110 C -> ZKDY520100TD10001] - FOR TYPES WITH H-M-L [5110 C -> ZKDY520200TD10001]



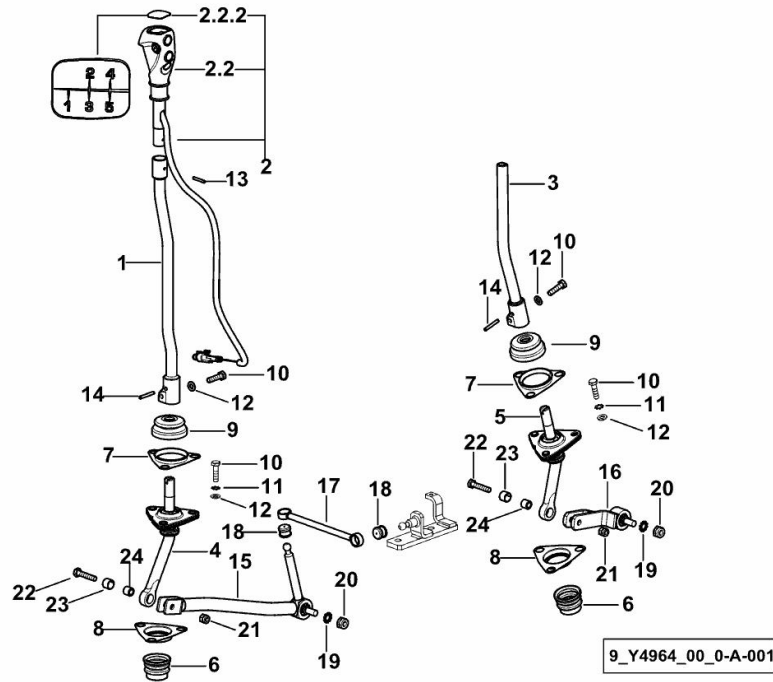
1	0.020.8063.3/10	1	gear lever
2	0.020.8076.4	1	lever
2.2	0.019.7635.3	1	knob
			- WITHOUT PUSHBUTTONS
2.2.2	0.019.8900.2	1	cap
3	0.020.7986.3	1	lever
4	0.014.8613.4	1	lever
5	0.014.8623.4	1	lever
6	0.007.7693.0/10	2	cap-washer
7	0.007.6981.0/10	2	cap-washer
8	0.007.7692.0/10	2	bellows
9	0.255.6451.0/10	2	bellows
10	2.0112.211.2	8	screw m 8 p.1.25 x 30
11	2.1470.004.2	6	lock washer 8
12	2.1310.004.2	8	flat washer 8.4x17
13	2.1630.451.2	1	pin 4 x 26
14	2.1631.415.2	2	pin 5x32
15	0.014.8487.3	1	rod
16	0.020.7584.3	1	lever
17	0.020.7582.2	1	rod
18	0.255.6454.0	2	pin seat
19	2.1470.006.2	2	lock washer 10
20	2.1120.106.2	2	self-locking nut m 10 p.1.25
21	2.1120.005.2	2	nut m 8 p.1.25
22	2.0112.215.2	2	screw m 8 p.1.25 x 40
23	2.1579.965.2	2	spacer 8.5x14x12.5
24	2.1555.107.0	2	bushing 14x16x12

GEARBOX CONTROLS

Fig.	P/n	QTY	Name
------	-----	-----	------

Notes:

[5110 C -> ZKDY520100TD10001] [5110 C -> ZKDY520200TD10001]



1	0.020.8063.3/20	1	gear lever
2	0.020.8167.4	1	gear lever
2.2	0.019.7635.3	1	knob - WITHOUT PUSHBUTTONS AND PLUGS
2.2.2	0.019.8900.2	1	cap
3	0.020.7986.3	1	lever
4	0.014.8613.4	1	lever
5	0.014.8623.4	1	lever
6	0.007.7693.0/10	2	cap-washer
7	0.007.6981.0/10	2	cap-washer
8	0.007.7692.0/10	2	bellows
9	0.255.6451.0/10	2	bellows
10	2.0112.211.2	8	screw m 8 p.1.25 x 30
11	2.1470.004.2	6	lock washer 8
12	2.1310.004.2	8	flat washer 8.4x17
13	2.1630.451.2	1	pin 4 x 26
14	2.1631.415.2	2	pin 5x32
15	0.014.8487.3	1	rod
16	0.020.7584.3	1	lever
17	0.020.7582.2	1	rod
18	0.255.6454.0	2	pin seat
19	2.1470.006.2	2	lock washer 10
20	2.1120.106.2	2	self-locking nut m 10 p.1.25
21	2.1120.005.2	2	nut m 8 p.1.25
22	2.0112.215.2	2	screw m 8 p.1.25 x 40
23	2.1579.965.2	2	spacer 8.5x14x12.5 (10001 <-)
23	2.1549.849.0	2	spacer 8x14x12.5
24	2.1555.107.0	2	bushing 14x16x12

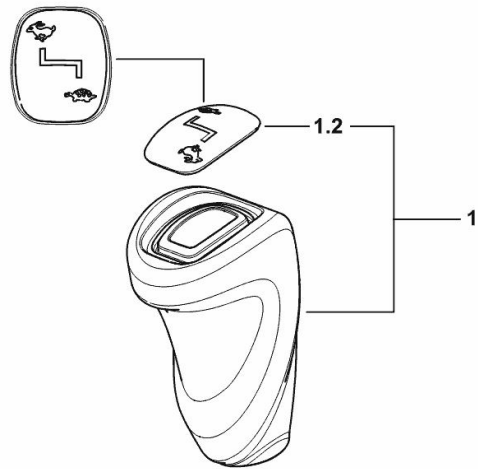
KNOB FOR 2-RANGE GEARBOX

Fig.	P/n	QTY	Name
------	-----	-----	------

Notes:

[5110 C -> ZKDY520100TD10001] [5110 C -> ZKDY520200TD10001]

1	0.020.7677.3	1	knob
1.2	0.020.7835.3	1	cap



9_Y4964_01_0-A-001

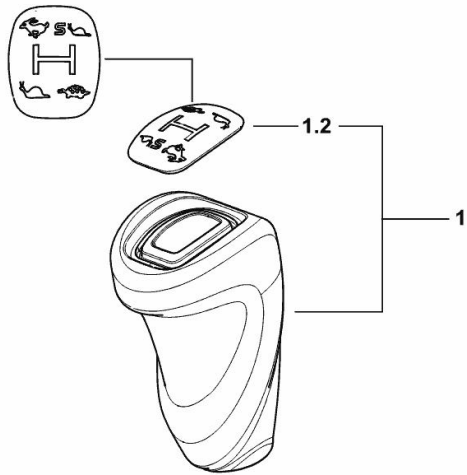
KNOB FOR 4-SPEED RANGE GEARBOX

Fig.	P/n	QTY	Name
------	-----	-----	------

Notes:

[5110 C -> ZKDY520100TD10001] [5110 C -> ZKDY520200TD10001]

1	0.020.7692.3	1	knob
1.2	0.011.0052.3/20	1	cap



9_Y4964_02_0-A-001

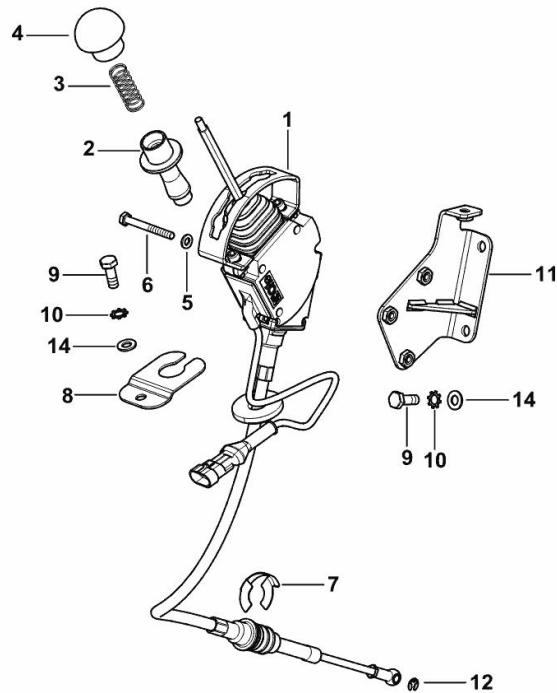
P.T.O. SHAFT DRIVE

Fig.	P/n	QTY	Name
------	-----	-----	------

Notes:

[5110 C -> ZKDY520100TD10001] [5110 C -> ZKDY520200TD10001]

1	0.020.7480.4	1	control ☞ 0.020.7480.4
2	0.018.9419.0	1	slider
3	2.4019.835.2	1	spring
4	0.018.9421.2	1	knob
5	2.1310.002.2	3	flat washer 6.4x12.5
6	2.0112.020.2	3	screw m 6 p.1 x 55
7	04418159	1	circlip
8	0.020.7477.0	1	bracket
9	2.0112.208.2	3	screw m 8 p.1.25 x 22
10	2.1470.004.2	3	lock washer 8
11	0.020.7478.3	1	bracket
12	2.1430.006.2	1	circlip 5
14	2.1310.004.2	3	flat washer 8.4x17



9_Y4968_15_0-A-001

P.T.O. - ECONOMICAL CONTROL

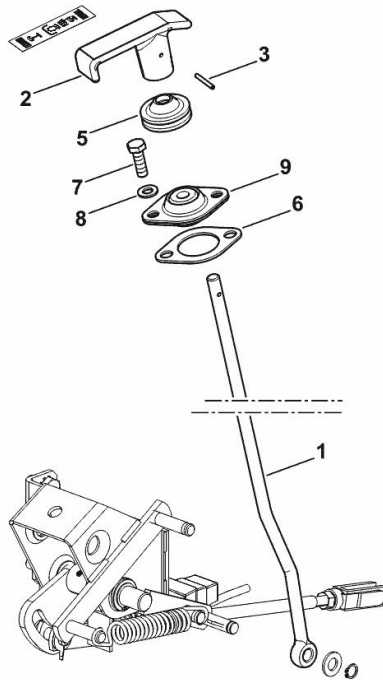
Fig.	P/n	QTY	Name
------	-----	-----	------

Notes:

[5110 C -> ZKDY520100TD10001] [5110 C -> ZKDY520200TD10001]

1	0.020.7814.0	1	rod
2	0.020.7873.0	1	grip
3	2.1630.251.9	1	pin 3x26
5	2.6569.069.0/10	1	rubber plug
6	0.009.0480.0	1	gasket
7	2.0112.209.2	2	screw m 8 p 1.25 x 25
8	2.1310.004.2	2	flat washer 8.4x17
9	0.009.1618.3	1	support

9_Y4968_10_0-A-001



P.T.O. - ECONOMICAL CONTROL

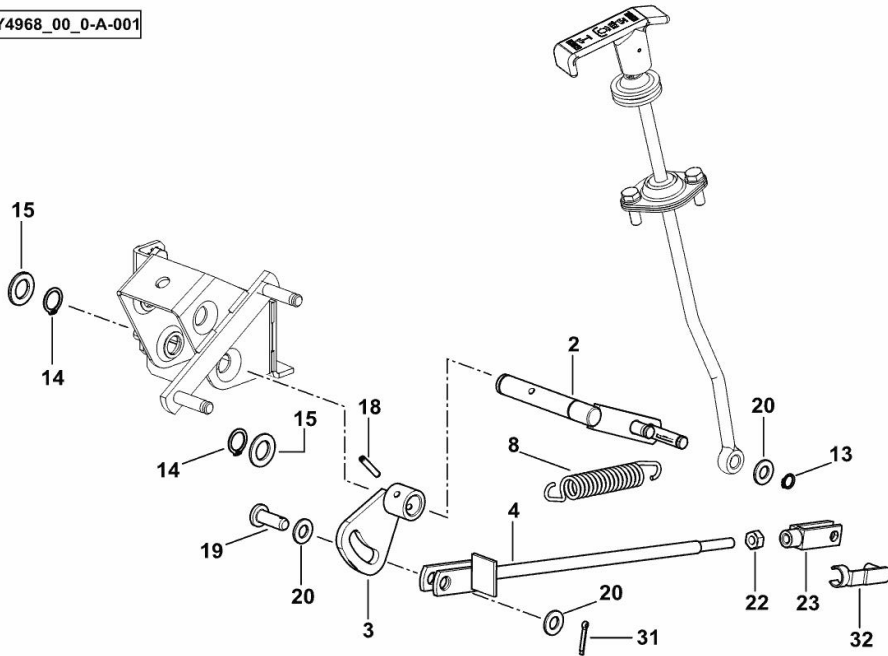
Fig.	P/n	QTY	Name
------	-----	-----	------

Notes:

[5110 C -> ZKDY520100TD10001] [5110 C -> ZKDY520200TD10001]

2	0.008.9475.3	1	lever
3	0.008.3659.3	1	lever
4	0.008.9033.3/30	1	rod
8	2.4049.139.1/10	1	spring
13	2.1410.001.1	1	circlip 10
14	2.1311.010.2	2	flat washer 16
15	2.1410.004.2	2	circlip 16
18	2.1631.412.0	1	roll pin 5x26
19	2.1671.407.2	1	pin 10 x 28
20	2.1310.006.2	3	flat washer 10.5x21
22	2.1011.105.2	1	nut m 8 p.1.25
23	2.3510.014.2	1	fork m 8x32
31	2.1690.307.2	1	split pin 3.2x18
32	2.1673.007.2	1	pin m 8x32

9_Y4968_00_0-A-001



P.T.O. - SYNCHRONIZED CONTROL

9_Y4968_11_0-A-001

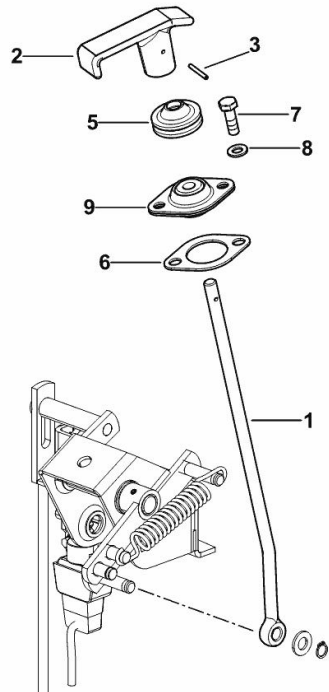


Fig.	P/n	QTY	Name
------	-----	-----	------

Notes:

[5110 C -> ZKDY520200TD10001]

1	0.020.7853.0	1	rod
2	0.020.7873.0	1	grip
3	2.1630.251.9	1	pin 3x26
5	2.6569.069.0/10	1	rubber plug
6	0.009.0480.0	1	gasket
7	2.0112.209.2	2	screw m 8 p 1.25 x 25
8	2.1310.004.2	2	flat washer 8.4x17
9	0.009.1618.3	1	support

Buy Now



Our support email:

ebooklibonline@outlook.com